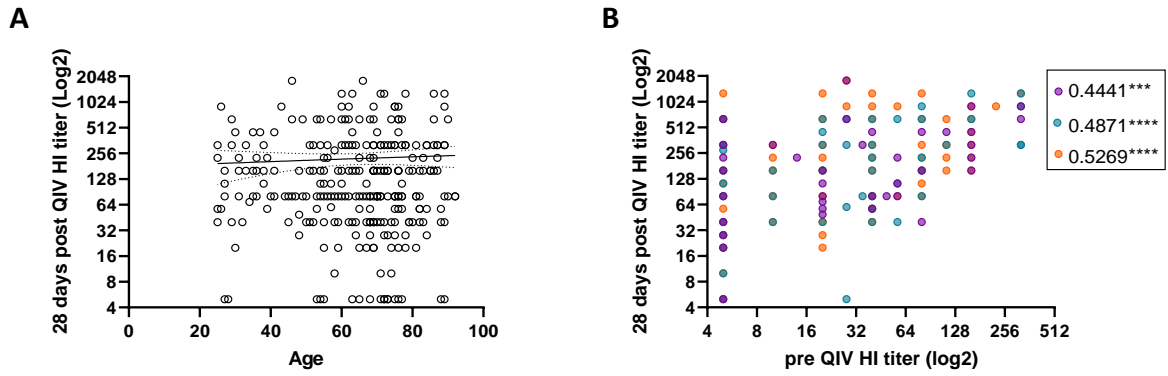


Supplementary material

Supplementary Table 1. Demographics characteristics of study population.

	Young adults	Middle-aged adults	Older adults
Number	59	95	161
Age - mean [min-max]	36 [25-49]	58 [50-64]	76 [65-98]
% male	34%	41%	53%
BMI - mean [min-max]	24 [18.7-35.5]	24.6 [18.7-37.0]	26.0 [17.4-40.6]
Number of seasonal influenza vaccinations since 2014 - median [min-max]	3 [1-5]	5 [1-5]	5 [1-5]
Frailty index – median [min – max]	0.07 [0.0 – 0.27]	0.10 [0.01 – 0.36]	0.18 [0.03 – 0.53]
EQ-5D-3L – median [min – max]	1 [0.18 – 1]	1 [-0.03 – 1]	1 [0.30 – 1]
Number of medications – median [min – max]	0 [0 – 7]	1 [0 – 7]	4 [0 – 12]
Cardiovascular disease - n(%)	0 (0%)	4 (4.2%)	42 (26.1%)
High blood pressure - n(%)	4 (6.8%)	28 (29.5%)	82 (50.9%)
Cancer - n(%)	0 (0%)	9 (9.5%)	41 (25.5%)
Diabetes - n(%)	0 (0%)	6 (6.3%)	20 (12.4%)
Lung diseases - n(%)	1 (1.7%)	7 (7.4%)	6 (3.7%)
Joint inflammation - n(%)	0 (0%)	3 (3.2%)	11 (6.8%)
Disease of Nervous system - n(%)	0 (0%)	0 (0%)	5 (3.1%)



Supplementary Figure 1. Additional analysis on H3N2 HI titers 28 days post QIV vaccination.

(A) Correlation between the 28 days post-QIV H3N2 HI titers and age. **(B)** The correlation between the pre-vaccination and 28 days post QIV vaccination HI titers per age group (young adults: purple, middle-aged adults: blue, and older adults: orange). The Spearman rho is provided. *** $p < 0.001$, **** $p < 0.0001$.

Supplementary Table 2. 28 days post PCV13 vaccination pneumococcal serotype specific geometric mean IgG concentrations.

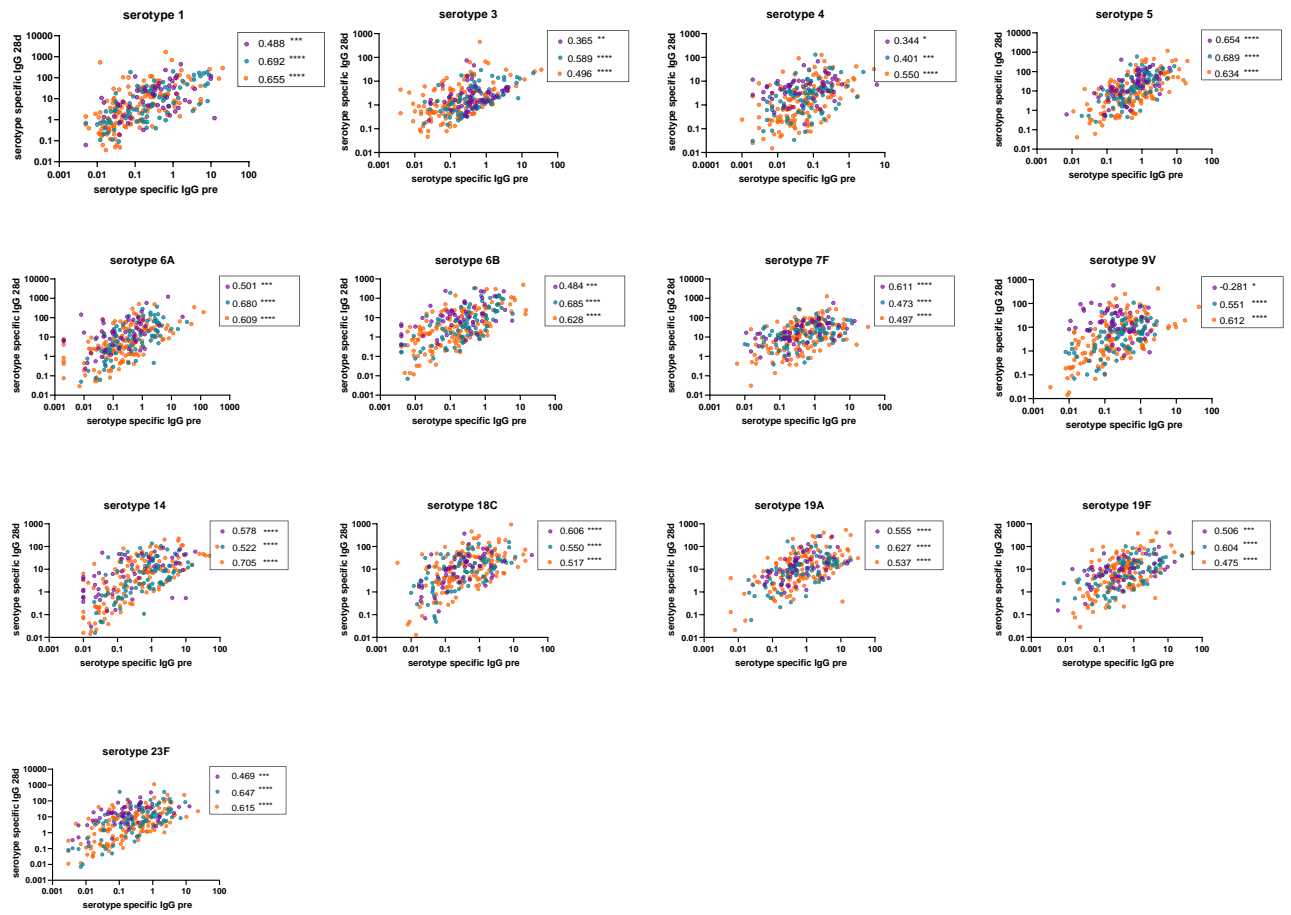
<i>Pneumococcal serotype</i>	<i>Young adults</i>	<i>Middle-aged adults</i>	<i>Older adults</i>
1	9.80 [5.78-16.61]	5.56 [3.60-8.59]	4.11 [2.84-5.93]* ^a
3	2.25 [1.64-3.08]	1.82 [1.39-2.38]	1.48 [1.14-1.93]
4	4.64 [3.32-6.48]	2.07 [1.46-2.95]** ^a	1.37 [1.00-1.88]**** ^a
5	17.67 [11.22-27.81]	14.53 [9.94-21.24]	9.18 [6.56-12.83]
6A	13.35 [8.03-22.20]	7.49 [4.79-11.71]	5.19 [3.66-7.36]* ^a
6B	9.99 [6.30-15.83]	4.46 [2.80-7.12]	2.77 [1.93-4.00]**** ^a
7F	16.16 [11.10-23.54]	13.59 [10.18-18.14]	11.62 [8.66-15.59]
9V	4.75 [3.41-6.62]	3.92 [2.81-5.48]	3.30 [2.36-4.62]
14	4.84 [2.79-8.40]	4.73 [3.12-7.18]	3.54 [2.41-5.21]
18C	8.14 [5.03-13.18]	8.05 [5.51-11.76]	10.10 [7.32-13.90]
19A	12.73 [8.71-18.61]	8.96 [6.43-12.49]	10.10 [7.55-13.43]
19F	8.47 [5.73-12.51]	6.25 [4.54-8.62]	6.00 [4.46-8.07]
23F	13.24 [8.52-20.60]	4.87 [2.96-8.00]* ^a	3.07 [2.13-4.44]**** ^a

Concentrations are in ug/mL [95% CI]. ^a: compared to the young adults. *p<0.05, **p<0.01, ***p<0.001, ****p<0.0001

Supplementary Table 3. Correlation between age and the 28 days post PCV13 vaccination pneumococcal serotype specific IgG concentrations.

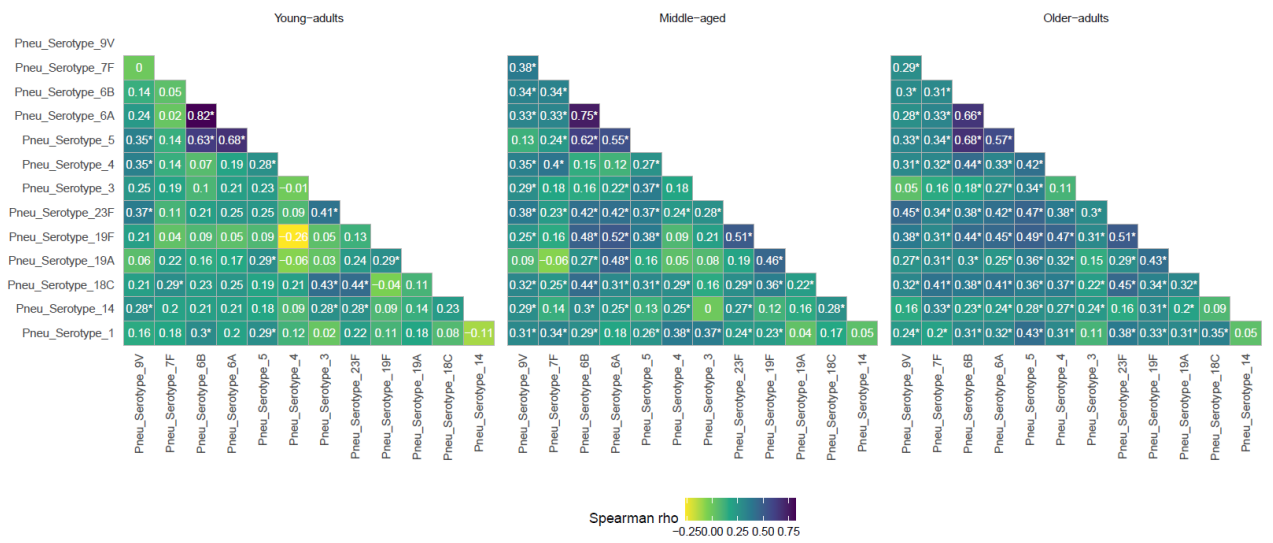
<i>Pneumococcal serotype</i>	<i>rho</i>	<i>p-value</i>
1	-0.156	0.009*
3	-0.107	0.076
4	-0.235	<0.0001*
5	-0.183	0.002*
6A	-0.146	0.015*
6B	-0.208	0.001*
7F	-0.044	0.467
9V	-0.074	0.219
14	-0.050	0.413
18C	0.064	0.293
19A	-0.025	0.680
19F	-0.075	0.216
23F	-0.251	<0.0001*

The Spearman rho is given. * indicates a significant correlation.

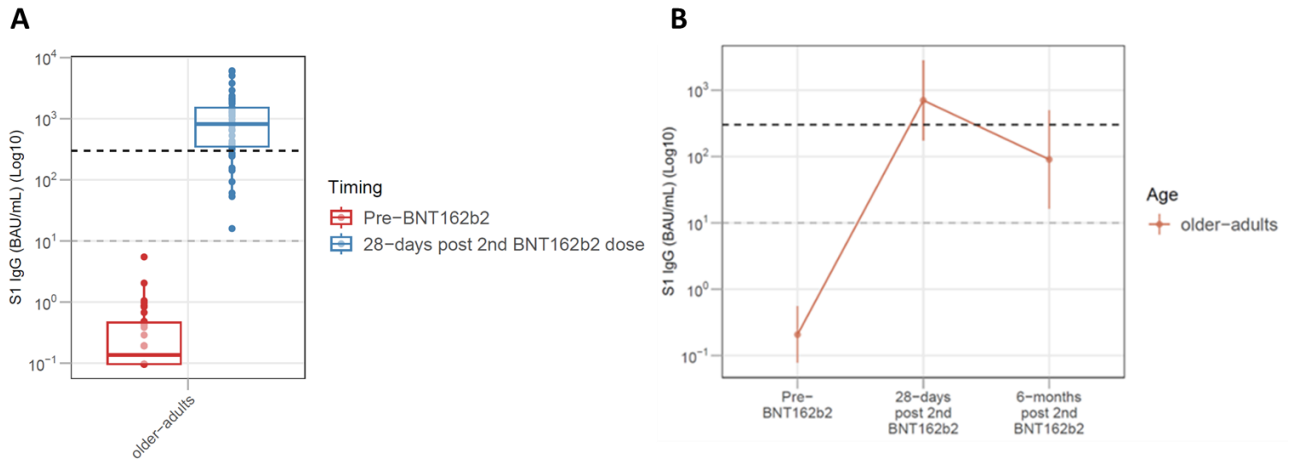


Supplementary Figure 2. Analysis of the correlation between pre and post PCV13 vaccination serotype specific IgG concentrations.

The correlation between the pre-vaccination and 28 days post PCV13 vaccination serotype specific IgG concentrations (ug/mL) (Log10 scale) separated for the 3 different age groups (young adults: purple, middle-aged adults: blue, older adults: orange). The Spearman's rho is indicated. * $p < 0.05$, ** $p < 0.01$, *** $p < 0.001$, **** $p < 0.0001$.

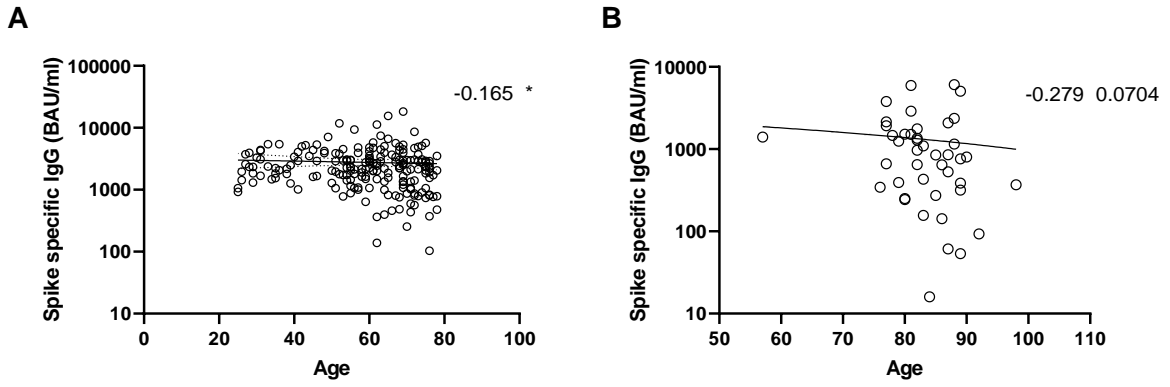


Supplementary Figure 3. Partial correlation matrix between the pneumococcal serotype-specific IgG concentrations 28 days post-PCV13 vaccination split by age group. The Spearman correlation coefficient is indicated and the * indicates a significant correlation.



Supplementary Figure 4. BNT162b2 induced S1 specific IgG responses in the older adults.

(A) The pre- and 28- days post 2nd BNT162b2 vaccination S1-specific IgG concentrations (BAU/mL) (presented on a log₁₀ scale) in the older adults (n=42) (mean age 84 (range 76-98)). The box plots indicate the median and interquartile range. **(B)** The longitudinal (pre-, 28 days, and 6 months post 2nd BNT162b2 vaccination) S1-specific IgG concentrations split in the older adults (n=39). The lines indicate the mean and standard error of the mean. No statistics are indicated in this graph. In both A and B, the grey dotted line (S1 specific IgG = 10 BAU/mL) indicates the cut-off for seropositivity. The black dotted line (S1 specific IgG = 300 BAU/mL) indicates the cut-off for an adequate response.



Supplementary Figure 5. Analysis of SARS-COV2 vaccine responses in relation to age.

The Spike specific S1 IgG concentrations (BAU/mL) following two vaccinations of mRNA-1273 **(A)** and BNT162b2 **(B)** in relation to age. The Spearman's rho is indicated. * $p < 0.05$

Supplementary Table 4. The division of the young, middle-aged and older adults over the different humoral response categories.

	Young adults (%)	Middle-aged adults (%)	Older adults (%)
Dual vaccine analysis			
<i>QIV</i>			
1	14.6	26.5	30.1*
2	29.2*	28.9	23.5
3	29.2*	21.7	20.6
4	27.1*	22.9	25.7
<i>PCV13</i>			
1	8.3	26.5	30.9*
2	18.8	20.5	27.9*
3	47.9*	30.1	11.8
4	25	22.9	29.4*
<i>Dual score</i>			
1	0	6	11*
2	27.1	32.5*	29.4
3	43.8*	43.4	41.9
4	29.2*	18.1	17.6
Triple vaccine analysis			
<i>QIV</i>			
1	12.2	22.9	34.2*
2	31.7*	30.0	21.5
3	34.1	37.1*	26.6
4	22.0*	10.0	17.7
<i>PCV13</i>			
1	12.2	27.1	31.6*
2	29.3	22.9	30.4*
3	24.4	25.7*	10.1
4	34.1*	24.3	27.8
<i>mRNA-1273</i>			
1	12.2	21.4	35.4*
2	31.7*	27.1	19.0
3	22.0	28.6*	22.8
4	34.1*	22.9	22.8
<i>Triple score</i>			
1	2.4	8.6	12.7*
2	31.7	42.9	49.4*
3	53.7*	42.9	31.6
4	12.2*	5.7	6.3

The division of participants of every age group over the 4 categories is calculated per vaccine or response score. The age group with the highest proportion in a response category is indicate with a *.