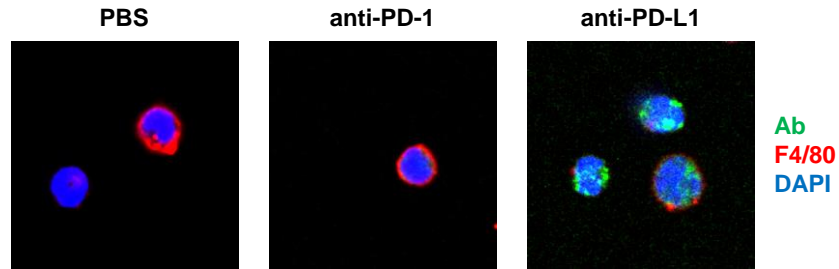


## Supplementary Figure 1



**Intracellular trafficking of anti-PD-L1 mAb in mouse bone marrow F4/80<sup>+</sup> macrophages.** Mice were intravenously injected with PBS, Alexa 488-labeled anti-PD-1 or anti-PD-L1 mAb (green). Bone marrow cells were isolated 24 h later and stained with anti-F4/80 mAb (red) and DAPI (blue).