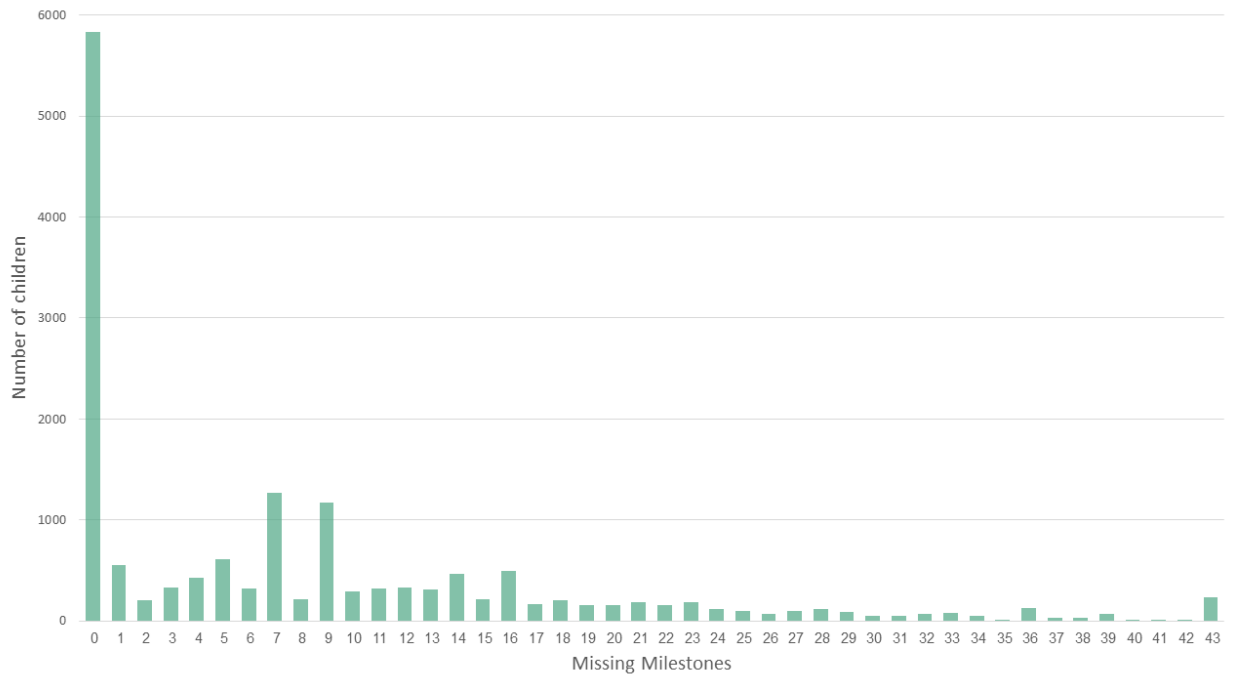


Supplemental materials

Figure S1. Distribution of the number of missing milestones among ASD children



Note. 5836 ASD children had 0 missing milestones.

Figure S2. The number of participants in each of 9 clusters.

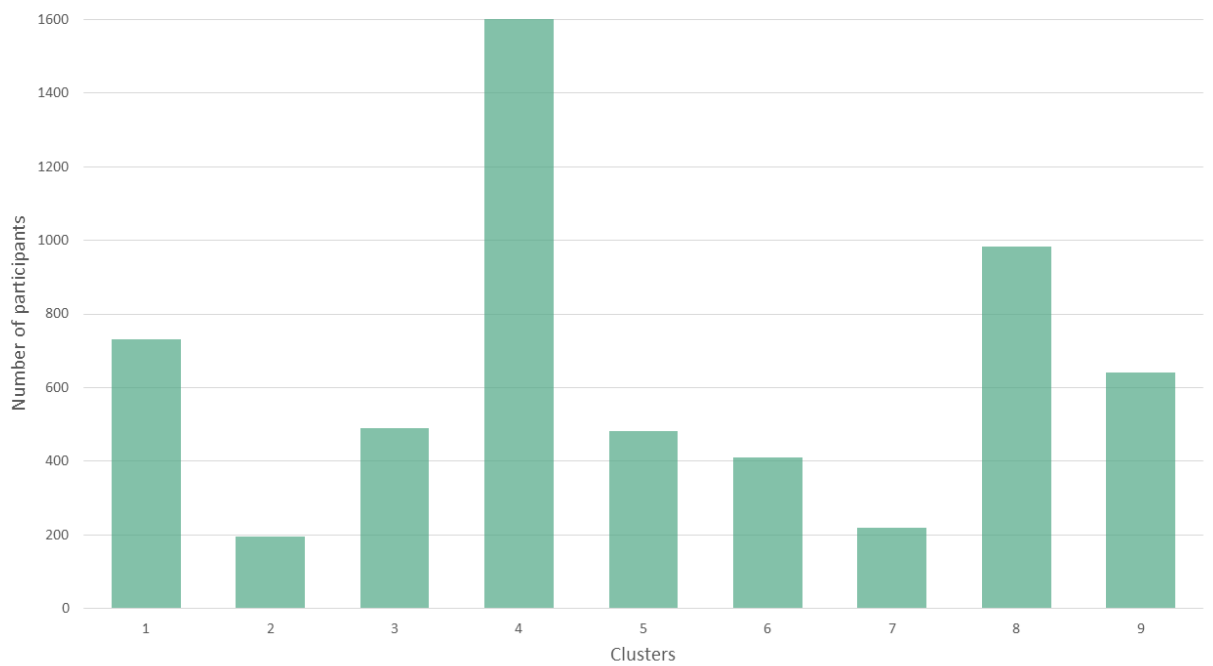
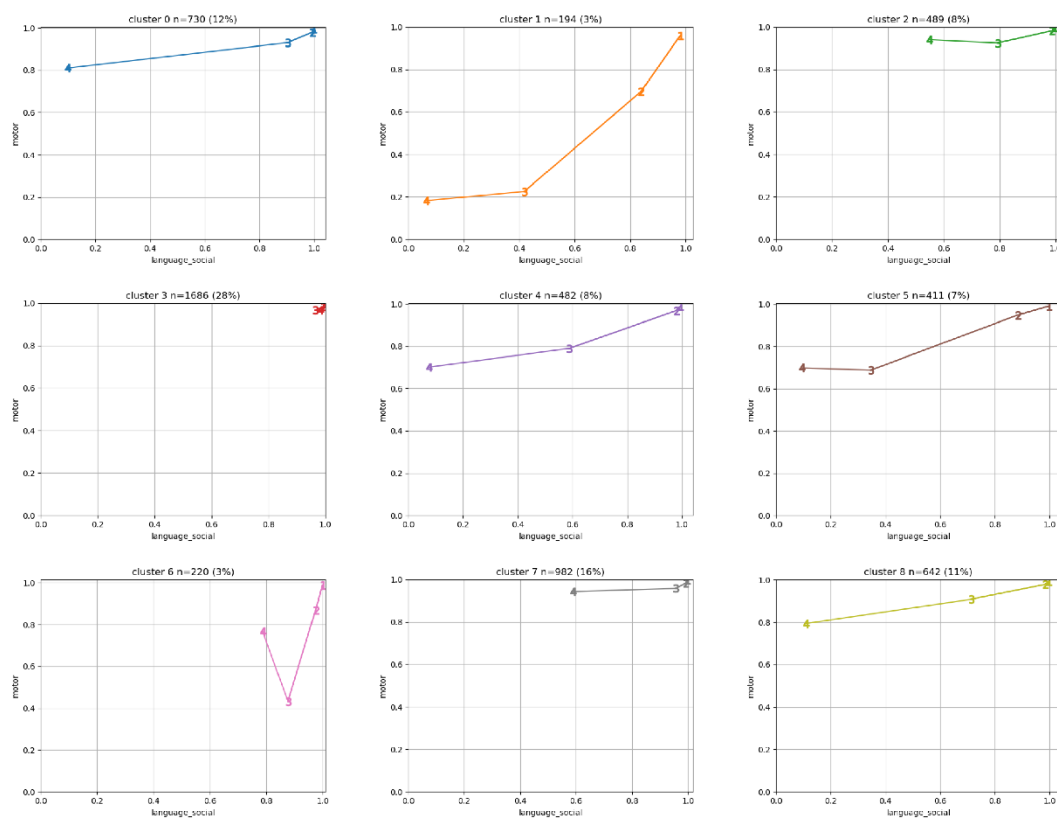


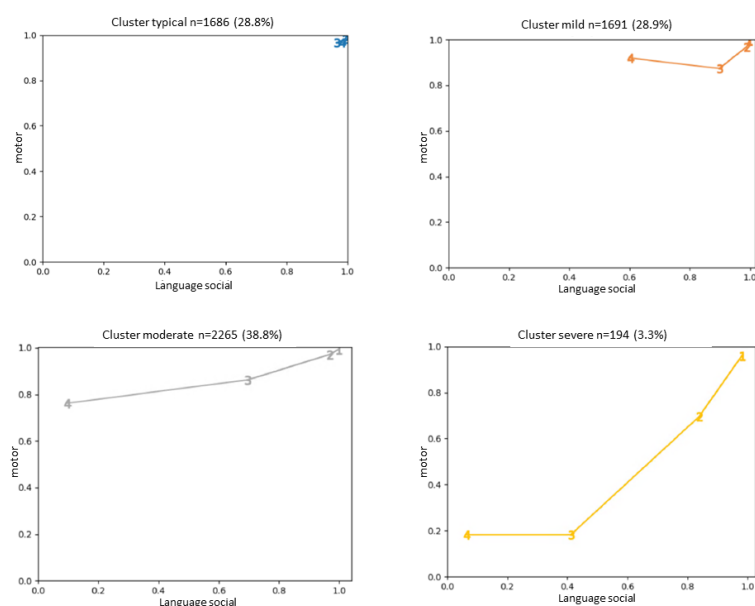
Figure S3 Development of clusters across time in language-social relative to motor domains.

3a. Development of initial 9 clusters across time.



Note. For descriptive purposes, mean passing rates in each domain were computed for 4 time points: time 1= up to 6 months, time 2= 6–12 months, time 3=12–24 months, time 4=24–36 months. For visualization we grouped fine and gross motor into the motor axis, and language and social milestones into a language-social axis. These nine clusters were grouped into four clusters based on their similarities as follows: Typical cluster= cluster 3 high across all points. Moderate cluster= clusters 0,4,5,8 with a mixed language-social and mild motor involvement. Mild cluster= clusters 2,6,7 language-social delay. Severe cluster=cluster 1 with low language-social scores as motor delay.

3b. Development of 4 clusters across time.



Note. Numbers on graph points represent times. Motor refers to gross and fine motor and language_social refers to language and social domains. Time 1= up to 6 months, time 2= 6-12 months, time 3=12-24 months, time 4=24-36 months.

Table S1. Summary of Common Features for EDM Clusters

	<i>Milestone Delay (months)</i>					
	<i>Language / Social</i>	<i>Fine Motor</i>	<i>Gross Motor</i>	<i>Birth Parameters</i>	<i>Demo-graphics</i>	<i>Parent concerns</i>
EDM Typical	No delay	No delay	No delay		High SES	Low
EDM Mild	24-36	No delay	No delay		Medium SES	Medium
EDM Moderate	12-18 greater magnitude from 18 months	18-36	No delay		Low SES	High
EDM Severe	9-12 greater magnitude from 12 months.	6-9	6-9	Low birth weight. Preterm Cesarean birth	Low SES	Highest