

1 **TITLE: Multimorbidity in Older Adults with Depression Study (MODS) (Behavioural**
2 **Activation to improve physical and mental functioning among older people with**
3 **multiple long-term conditions): Protocol for a fully powered randomised controlled trial**

4
5 **Authors**

6 Eloise Ryde^{1,2}, Kelly Hollingsworth², Elizabeth Littlewood², Lucy Atha², Della Bailey²,
7 Heather Baker^{1,2}, Katharine Bosanquet², Leanne Shearsmith³, Carolyn A. Chew-Graham⁴,
8 Dean McMillan^{2,5}, Kalpita Baird², Peter Coventry², Suzanne Crosland², Caroline Fairhurst²,
9 Han-I Wang², Lauren Burke², Janine Heeley², Catherine Hewitt², Andrew Clegg³, Tom
10 Gentry⁶, Andrew Hill³, Karina Lovell⁷, Sarah Dexter-Smith¹, Gemma Traviss-Turner³, Judith
11 Webster⁸, Elizabeth Agnew^{1,2}, Heidi Stevens², Katie Webb², Simon Gilbody^{2,5}, David
12 Ekers^{1,2*}

13

14 **Corresponding author, e-mail: david.ekers@nhs.net Telephone number: 01642 283501*

15 *Declared competing interests of authors: none*

16

- 17 1. Tees, Esk and Wear Valleys NHS FT, Research and Development, Flatts Lane Centre,
18 Middlesbrough, TS6 0SZ, UK
19 2. Department of Health Sciences, University of York, York, YO10 5DD, UK
20 3. Leeds Institute of Health Sciences, University of Leeds, Leeds, LS2 9NL, UK
21 4. School of Medicine, Keele University, Staffordshire, ST5 5BG, UK
22 5. Hull York Medical School, University of York, YO10 5DD, UK
23 6. Age UK, 68 Parkway, Camden, London, NW1 7AH.
24 7. Division of Nursing, Midwifery & Social Work, University of Manchester, Oxford Road,
25 Manchester, M13 9PL, UK
26 8. Patient and Public Representative, UK.

27

28

29

30

31

32

33

NOTE: This preprint reports new research that has not been certified by peer review and should not be used to guide clinical practice.

34 Eloise Ryde: eloise.ryde@nhs.net
35 Kelly Hollingsworth: kelly.hollingsworth@york.ac.uk
36 Elizabeth Littlewood: liz.littlewood@york.ac.uk
37 Lucy Atha: lucy.atha@york.ac.uk
38 Della Bailey: della.bailey@york.ac.uk
39 Heather Baker: heather.baker13@nhs.net
40 Katharine Bosanquet: kate.bosanquet@york.ac.uk
41 Leanne Shearsmith: l.shearsmith@leeds.ac.uk
42 Carolyn Chew-Graham: c.a.chew-graham@keele.ac.uk
43 Dean McMillan: dean.mcmillan@york.ac.uk
44 Kalpita Baird: kalpita.baird@york.ac.uk
45 Peter Coventry: peter.coventry@york.ac.uk
46 Suzanne Crosland: suzanne.crosland@york.ac.uk
47 Caroline Fairhurst: caroline.fairhurst@york.ac.uk
48 Han-I Wang: han-i.wang@york.ac.uk
49 Lauren Burke: lauren.burke-2@postgrad.manchester.ac.uk
50 Janine Heeley: janine.heeley@york.ac.uk
51 Catherine Hewitt: catherine.hewitt@york.ac.uk
52 Andrew Clegg: a.p.clegg@leeds.ac.uk
53 Tom Gentry: tom.gentry@ageuk.org.uk
54 Andrew Hill: a.j.hill@leeds.ac.uk
55 Karina Lovell: karina.lovell@manchester.ac.uk
56 Sarah Dexter Smith: sarah.dexter-smith@nhs.net
57 Gemma Traviss-Turner: g.traviss@leeds.ac.uk
58 Judith Webster: ja.webster@hotmail.co.uk
59 Elizabeth Agnew: elizabeth.agnew4@nhs.net
60 Heidi Stevens: heidi.stevens@york.ac.uk
61 Katie Webb: katie.webb@york.ac.uk
62 Simon Gilbody: simon.gilbody@york.ac.uk
63 Dave Ekers: david.ekers@nhs.net

64

65

66 **Funding**

67 David Ekers, Simon Gilbody, Elizabeth Littlewood, Dean McMillan, Carolyn Chew-Graham,
68 Catherine Hewitt, Gemma Traviss-Turner, Andrew Clegg, Tom Gentry, Andrew Hill, Karina
69 Lovell and Sarah Dexter-Smith were funded by National Institute for Health and Care
70 Research (NIHR) Programme Grants for Applied Research (PGfAR) RP-PG-0217-20006.
71 The funder had no role in study design, data collection and analysis, decision to publish, or
72 preparation of the manuscript.

73

74 **Competing Interests**

75 Based upon the journal's policy, the authors of this manuscript have the following competing
76 interests.

77 Simon Gilbody, Peter Coventry and Dean McMillan are supported by the NIHR Yorkshire
78 and Humberside Applied Research Collaboration (ARC), David Ekers is supported by the
79 North East and North Cumbria ARCs, and Carolyn Chew-Graham is supported by the NIHR
80 West Midlands ARC.

81

82 **Abstract**

83 **Introduction**

84 Older adults (65 years or over) and those with long-term health conditions (LTCs), represent
85 a 'high risk' group for depression, with a risk two-to-three times the general population. This
86 can lead to poorer quality of life and be costly to health and social care services. In the
87 Multimorbidity in Older Adults with Depression Study (MODS) we will test whether a brief
88 psychological intervention (Behavioural Activation), helps to improve physical/mental
89 functioning in this group compared to treatment as usual.

90 **Methods**

91 We will conduct a two-arm, parallel-group randomised controlled trial, to evaluate the
92 clinical and cost-effectiveness of the MODS intervention. Participants will be recruited via
93 general practices across England. To be included, participants must be aged 65 years or over,
94 with two or more LTCs and either sub-threshold depression or major depression.

95 Randomisation will be simple 1:1. Intervention participants will receive up to eight sessions
96 delivered by MODS support workers, supported by a self-help booklet. Control participants
97 will receive usual care.

98 A process evaluation will be undertaken to evaluate the processes and mechanisms
99 underpinning intervention delivery, and to inform the development of an implementation
100 framework. Semi-structured interviews will be conducted with intervention participants,
101 participant's caregivers/supportive others, and health and social care professionals. Focus
102 groups and semi-structured interviews will be conducted with MODS support workers.
103 Outcome data will be collected at four, eight, and twelve-months post-randomisation. The
104 primary outcome is self-reported quality of life and functioning at the four-month follow up.
105 Secondary outcomes include depression, anxiety, physical functioning, loneliness, social
106 isolation, chronic pain, health related quality of life, and health services use.

107 **Discussion**

108 This study builds on our previous work and will evaluate a brief psychological intervention to
109 improve physical and mental health functioning for older adults with multiple long-term
110 conditions.

111 **Trial Registration**

112 ClinicalTrials.Gov Identifier ISRCTN44184899, registered on 11th August 2022.

113

114 **Introduction**

115 With the UK population ageing, [1] and older adults representing a substantial and growing
116 proportion of the global population, there is increased urgency to understand and address
117 their unique physical health and mental health needs [2]. Older adults are a heterogenous
118 population; it is not age alone that may create vulnerability, but the risk factors associated
119 with ageing [3]. Along with the physical and social environments that may influence healthy
120 ageing, personal characteristics, including the presence of long-term conditions (LTCs), may
121 lead to a decline in physical and/or mental health functioning.

122 Having two or more LTCs is referred to by the National Institute for Health and Care
123 Excellence (NICE) as ‘multimorbidity’ [4] though we will use the patient-preferred term
124 ‘multiple long-term conditions’. Large-scale survey data (n=4,712) examining age-related
125 change found that health-related variables (number of LTCs, self-rated health) were strongly
126 associated with perceptions of physical functioning, which increased with age from 65 years
127 onwards [5]. Yet the challenges of managing multiple LTCs are not exclusively physical.
128 Depression is two-to-three times more likely to be present across the range of LTCs resulting
129 in poorer outcomes, lower quality of life and increased mortality [6]. Depression is defined as
130 an emotional disorder characterised by the persistent experience of negative feelings such as
131 sadness, emptiness, and joylessness, which is usually accompanied by lack of energy,
132 tiredness, exhaustion, and fatigue [7]. Among older adults with co-morbid LTCs, depression
133 is associated with the greatest decrements in quality of life, greater treatment costs and
134 contributes to health inequalities, compared to those without LTCs [8]. In a healthcare
135 context where the mental health needs of older adults are often unaddressed, and older adult
136 psychological services are inadequately integrated across care settings [9], a growing body of
137 research is exploring feasible and scalable psychological intervention development to address
138 this unmet need.

139 There is accumulating evidence of cognitive and behavioural approaches in the prevention or
140 mitigation of depression in older adults [10, 11]. Behavioural Activation (BA) is an evidence-
141 based psychological treatment that explores how physical inactivity, avoidance, and low
142 mood are linked, and result in a reduction of valued activity [12]. It aims to reinstate valued
143 activities and connect individuals with sources of positive reinforcement. Moreover, there is
144 evidence that BA is acceptable to older adults with LTCs [13]. Existing literature suggests
145 that engaging in a greater variety of daily activities is related to increased social
146 connectedness [14], which is protective against loneliness and mental ill-health. Additionally,
147 there is evidence that a greater range and number of daily activities is related to higher
148 psychological well-being among older adults, with increased diversity of activities over 10
149 years being linked to increased wellbeing [15]. Thus, brief psychological interventions aimed
150 at increasing and facilitating older adults' engagement in valued activities (such as BA) might
151 have the potential to mediate the link between decline in physical functioning and depressive
152 symptoms. A meta-analysis found that BA significantly reduced depressive symptoms in
153 older adults in the community, but recommended further high-quality trials of BA for older
154 adults with multiple LTCs are needed [11]. Whilst there is evidence demonstrating the
155 clinical benefit of brief psychological interventions (including BA) for depression in the short
156 term [16], the clinical and cost effectiveness of BA for older adults with multiple LTCs over
157 the short and longer-term needs to be evaluated in a fully powered, randomised controlled
158 trial (RCT), specifically evaluating both physical functioning and depression in older adults
159 with LTCs.

160 The primary objective of the MODS trial is to conduct a fully powered, RCT to evaluate the
161 clinical and cost effectiveness of a brief psychological intervention (BA), set within a
162 collaborative care framework, for older adults with multiple LTCs and depression. A

163 secondary aim is to inform post-trial implementation of the intervention across a range of
164 provider settings and staff.

165

166 **Materials and Methods**

167 **Research Aims**

168 The aim of the MODS trial is to assess the clinical and cost effectiveness of a brief
169 psychological intervention (BA delivered within a collaborative care framework), with
170 embedded process, and economic evaluations:

- 171 ● Establish the clinical and cost effectiveness of the MODS BA intervention compared
172 to usual care on physical and mental functioning in older people with multiple LTCs.
- 173 ● To conduct preliminary economic modelling of intervention effects.
- 174 ● Evaluate the processes and mechanisms that underpin intervention delivery and to
175 develop a post-trial implementation framework for use across provider settings and
176 staff.

177

178 **Design**

179 This is a two-arm parallel-group, multicentre, RCT with embedded qualitative process and
180 economic evaluations. The trial also involves a sub-study to explore therapeutic alliance in
181 brief psychological therapy. The process of participant enrolment, interventions and
182 assessment is outlined in figure 1.

183

184 **Setting**

185 Participants will be identified through primary care general practices across England. The
186 MODS BA intervention will be delivered across a range of health care settings (e.g., primary
187 care, secondary care, and voluntary/third sector services).

188

189 **Identification**

190 Potential participants will be identified through searches of general practice registers. Lists of
191 patients aged 65 years or over with two or more LTCs will be screened by a member of the
192 practice team to ensure patients meeting exclusion criteria (detailed below) are removed.

193 LTCs will be based on the Department of Health (DoH) definition [17] and will focus on
194 commonly reported LTCs for older people (such as asthma/chronic obstructive pulmonary
195 disease, diabetes, hypertension/coronary heart disease, and stroke) according to the primary
196 care Quality and Outcomes Framework (QOF) [18] but will also include long-term conditions
197 such as neurological conditions.

198

199 **Inclusion Criteria**

- 200 ● Older adults (65 years or over)
- 201 ● Two or more long-term physical health conditions
- 202 ● Sub-threshold or major depression as ascertained by the Structured Clinical Interview
203 for DSM-5 axis 1 disorder depression subscale (SICD-5) [19]. Participants will be
204 categorised with sub-threshold depression where 2-4 depression symptoms (where at
205 least one of these are low mood or loss of interest or pleasure) are present. Where 5 or
206 more depressive symptoms are present (where at least one of these are low mood or
207 loss of interest or pleasure) participants will be categorised as having major
208 depressive disorder.

209

210 **Exclusion Criteria**

- 211 ● Cognitive impairment
- 212 ● Bipolar disorder/psychosis/psychotic symptoms
- 213 ● Alcohol or drug dependence
- 214 ● In the palliative phase of illness
- 215 ● Have active suicidal ideation
- 216 ● Currently receiving psychological therapy
- 217 ● Unable to speak or understand English

218 Older adults will not be excluded based on living in residential/care homes.

219

220 **Recruitment**

221 Potentially eligible participants will receive a study information pack (containing a practice
222 letter-headed invitation letter, Participant Information Sheet (PIS), consent form, and a
223 freepost return envelope) via their GP practice. Participants can indicate their interest in the
224 study through completing and returning a written consent form using the freepost envelope,
225 completing and submitting an online consent form, or by contacting the study team directly
226 (study team contact details provided in the PIS). Where feasible, potential participants will be
227 contacted by telephone, by extended GP practice teams, to establish interest in the study and
228 gain ‘permission to contact’. Verbal permission to pass on contact details to the local MODS
229 team will be recorded for interested patients.

230 Interested patients will then be contacted by telephone (or videocall, using an appropriate
231 online platform) by a MODS researcher to discuss the study, answer questions, and assess
232 eligibility. Verbal consent for study participation will be sought from interested and eligible

233 participants where they have not fully completed a written/online consent form. This process
234 (approved by the Research Ethics Committee) will involve the MODS researcher reading out
235 each consent statement verbatim and asking the participant whether they agree or disagree
236 with each statement, and documenting their response on a physical copy of the informed
237 consent form. Once informed consent is confirmed/received, the baseline questionnaire will
238 be completed over the telephone with a study researcher (either immediately following
239 completion of the baseline questionnaire or at a later date, and preferably within one week of
240 confirming eligibility, and in line with participant preference). Where participants may find
241 completing the baseline questionnaire over the telephone difficult, the option to complete this
242 via post (returned with a freepost envelope) or online (participants will be provided with a
243 secure unique link to the questionnaire) will be considered..

244

245 **Randomisation and Blinding**

246 Once the baseline questionnaire has been completed, eligible and consenting simple
247 randomisation will be used to allocate participants 1:1 to either the BA intervention group or
248 usual care group. Randomisation will be completed via a secure online randomisation service
249 provided by York Trials Unit (YTU). A YTU statistician who is not involved in participant
250 recruitment will generate the allocation schedule. Participants will be informed by telephone
251 of their group allocation immediately after randomisation has taken place, and this will be
252 confirmed by letter. For those participants allocated to the intervention group, a copy of the
253 MODS intervention booklet will accompany their allocation letter. A letter will also be sent
254 to the participant's GP practice confirming inclusion in the study, group allocation and
255 information regarding their mood (with the participant's consent).

256 Researchers will be blind to a participant's group allocation when completing follow up
257 questionnaires (where these are completed over the telephone). Due to the nature of the
258 intervention, it is not possible for those staff delivering the intervention (MODS Support
259 Workers) or participants to remain blind to group allocation.

260

261 **The MODS Intervention**

262 The MODS intervention utilises BA set within a Collaborative Care (CC) Framework. BA
263 aims to maintain an individual's connection with the world by helping them to continue with
264 the activities they value. Where particular valued activities may no longer be possible, either
265 temporarily or in the long-term, BA prompts participants to think about alternative activities
266 which fulfil a similar function for them and help them to remain active. Remaining active and
267 staying connected with the world may benefit physical and mental wellbeing. This may be
268 particularly important as LTCs can restrict the activities a person is able to do and curtail
269 their engagement with the outside world. The MODS Support Worker (MSW) and the
270 participant work together using the MODS self-help booklet to develop an individualised
271 treatment plan.

272 The CC aspect of the intervention involves the MSW encouraging and supporting the
273 participant to take a proactive approach towards managing their mood and LTCs. The MSW
274 will liaise with the participant's GP or other professionals involved in their care, if
275 appropriate, and where the participant consents to this. They may also signpost or help
276 participants to access relevant support services or organisations, including those within the
277 voluntary/third sector, who provide services or run activities which may be of interest to the
278 participant.

279 Participants will be offered up to eight intervention sessions during which they will be
280 supported by a trained MSW to work their way through the self-help booklet at a pace they
281 feel comfortable with. The self-help booklet has been developed as part of the wider MODS
282 research programme, with input and feedback gathered from a range of stakeholders,
283 including older adults with LTCs and/or mental health conditions, and members of the
284 MODS Patient and Public Involvement Advisory Group (PPI AG). For the majority of
285 participants, sessions will be delivered remotely, either over the telephone or by video call,
286 where this is available and according to participant preference. Face-to-face sessions may be
287 offered on an individual basis where sessions over the telephone or via video call are not
288 feasible; for example, where significant hearing difficulties make contact in this way
289 difficult. The first session will last approximately one hour with subsequent sessions lasting
290 approximately 30 minutes.

291 Symptom monitoring at each intervention session will be undertaken using the depression
292 scale of the Depression Anxiety Stress Scale (DASS) [20]. The DASS is a widely used
293 monitoring tool which is validated in a UK community context and is simple to score with
294 clear and standard clinical cut off scores (non/mild/moderate/severe). DASS scores will be
295 used to guide decision making by MSWs in conjunction with their MODS clinical supervisor.
296 Where risk or significant clinical deterioration is indicated the MSW will support the
297 participant to access more formal healthcare interventions.

298

299 **MODS Support Workers (MSWs)**

300 MSWs will include a range of practitioners from across a variety of backgrounds, both
301 clinical and non-clinical, and be based within primary care, secondary care, or voluntary/third
302 sector settings. MSWs will be required to complete a remotely delivered bespoke intervention

303 training course (approximately 22 hours) facilitated by clinical members of the MODS study
304 team. Materials, including role-play demonstrations of sessions and a MSW treatment manual
305 will be provided to the MSWs. The training will cover the components of the BA intervention
306 set within the CC framework, intervention delivery including the MODS self-help booklet,
307 and study procedures including those relating to managing risk and adverse events. MSWs
308 will be required to pass a telephone-based bespoke competency assessment with a training
309 facilitator before they commence delivery of the intervention. Regular supervision/support
310 will be provided to the MSWs from a clinical member of the MODS study team.

311

312 **Comparator**

313 Participants randomised to the usual care group will receive usual care as provided by their
314 current NHS and/or third sector providers.

315

316 **Outcome Measures**

317 Data will be obtained at baseline and four, eight, and twelve-months post-randomisation.

318 Baseline data will be collected over the telephone with a researcher, while participants will
319 have the option to complete follow-up questionnaires via the telephone (with a researcher),
320 online (via a secure and unique link emailed to the participant), or via the post (with a free
321 post return envelope provided). A reminder process consisting of emails and letters will be
322 implemented, where appropriate.

323 The primary outcome will be self-reported quality of life and functioning measures (as
324 measured by the mental and physical component scores of the SF-12v2) [21] at four months
325 post randomisation.

326 Secondary outcomes will include quality of life and functioning (SF-12v2) at eight and 12

327 months; depression status according to DSM-5 criteria (SCID-5) [19]; depression severity
328 (PHQ9) [22]; anxiety (GAD) [23]; physical function (NEADL) [24], loneliness (De Jong
329 Gierveld Scale – 11 items, total score and the two subscales of Social and Emotional
330 loneliness) [25]; social isolation (Lubben Social Network Scale - 6 items), chronic pain (two
331 questions from the Graded chronic pain scale revised) [26], health related quality of life
332 (EQ5D-3L) [27], and a bespoke health resource use questionnaire, each at four, eight, and
333 twelve-months.

334 Demographic information, including age, LTC types/health condition(s), depression history,
335 socio-economic status, ethnicity, education, cohabitation status, and Covid-19 history, will be
336 obtained as part of the baseline questionnaire.

337

338 **Data Management Plans**

339 All trial data will be securely stored on University or NHS computers. Remote access to data
340 (for staff working remotely) will be via secure and approved organisational Virtual Private
341 Networks (VPN), or equivalent. Where data is stored by non-NHS organisations, the process
342 for data storage will be reviewed and approved by the trial Sponsor (Tees, Esk and Wear
343 Valleys NHS Foundation Trust). All data storage processes will be in line with General Data
344 Protection Regulation (GDPR) and Good Clinical Practice (GCP) guidance). Access to
345 participant data will be restricted according to MODS researcher role. Participant
346 confidentiality will be maintained throughout, unless significant risk to self or others is
347 identified.

348

349 **Therapeutic Alliance Sub-Study**

350 Research has shown the relationship between therapeutic alliance and therapy outcome in the
351 treatment of depression is often a central component for the success of psychological
352 therapies. However, much of the research supporting this claim examines the alliance-
353 outcome relationship within high-intensity psychological treatments (such as Cognitive
354 Behaviour Therapy), and currently little is known about therapeutic alliance within brief
355 psychological treatments such as BA.

356 A sub-study examining therapeutic alliance will be incorporated within the MODS study to
357 allow exploration of if, and how, therapeutic alliance may predict intervention outcomes
358 (such as depression score) in brief psychological treatments.

359 A measure of therapeutic alliance (the Agnew Relationship Measure 12 item (ARM-12),
360 [28]) which gathers information on the strength of therapeutic alliance between the MODS
361 support worker and participant, will be incorporated into the MODS intervention. Participants
362 randomised to the MODS BA intervention group will receive blank printed copies of the
363 ARM-12 measure (the participant version) alongside their allocation letter, associated
364 intervention materials, and a freepost return envelope. The allocation letter details how and
365 when to complete the ARM-12 measure. MODS Support Workers will have the option to
366 complete their version of the ARM-12 measure on hard copies or online via a secure link.

367 Both the participant and the MODS Support Worker will complete the ARM-12 measure
368 independently following each MODS BA session. A latent trajectory analysis will be
369 conducted where sufficient ARM-12 data is collected, as this will allow for change over time
370 assessment. If this analysis is not feasible, a multi-level regression may be conducted. This
371 therapeutic alliance sub-study will be reported separately to the statistical analysis detailed
372 later in this paper.

373

374 **Safety Considerations**

375 Participant risk (suicide and non-suicide) will be monitored by study researchers and MSWs
376 during all participant contacts. Standard operating procedures and risk assessment training
377 will be provided. Where risk is identified, clinical members of the MODS study team will
378 support the risk assessment and determine the level of risk and, where appropriate, will
379 provide information to GP practices or emergency services.

380 Serious adverse events and adverse events will also be monitored by study researchers and
381 MSWs. These events will be reported within the appropriate timeframe.

382

383 **Sample Size**

384 To detect a small to medium standardised effect size of 0.3, on either the mental or physical
385 component score of the SF-12v2, assuming an alpha level of 0.025 and 80% power, a total
386 sample size of 426 participants is required. An effect size of 0.3 corresponds to a difference
387 of 3.3 SF-12v2 score points, assuming a standard deviation of 11 [29, 30], which falls within
388 the range of estimated minimum clinically important differences for SF-12v2 from varying
389 populations [31]. Although this is an individually randomised trial, the sample size was
390 inflated to account for potential clustering effects within MSWs, based on an intracluster
391 correlation coefficient (ICC) of 0.01 (in line with empirical estimates of within-therapist
392 clustering obtained in the CASPER trial [30] and an average cluster size of 15 (design effect
393 = 1.14). Though there is only clustering by MSW in the BA intervention group, the
394 adjustment was made for both groups, which provides a more conservative sample size
395 target. Allowing for 15% attrition, 572 participants, approximately 286 in each arm, would
396 need to be recruited and randomised into the trial.

397

398 **Analyses**

399 ***Statistical Analyses***

400 A detailed statistical analysis plan (SAP) will be produced before data analysis commences.

401 This will be approved by the joint Programme Steering and Data Monitoring and Ethics

402 Committee. Analysis will be conducted on an intention to treat (ITT) basis, using two-sided

403 statistical tests at the 5% significance level, using Stata v17 or later. The statistician will not

404 be blinded to treatment allocation.

405 The flow of participants through the trial will be presented using a CONSORT diagram

406 [Figure 2]. This will include the number of individuals screened, eligible and randomised

407 with reasons for non-participation provided where available. Adherence to the intervention

408 will also be recorded and reported. Full withdrawal and intervention only withdrawal will be

409 summarised according to trial arm.

410 Baseline data will be summarised by trial arm for all participants as randomised and as

411 included in the primary analysis. Formal statistical comparisons will not be completed on

412 baseline data. Continuous measures will be reported as means and standard deviation (SD),

413 while categorical data will be reported as counts and percentages.

414 The primary outcomes (Physical and Mental Component Scores of the SF-12v2) will be

415 analysed separately using a linear mixed model, including assessments at all available follow-

416 up time points (four, eight and twelve months after randomisation). The model will adjust for

417 baseline value of the outcome measure, trial arm, time, and arm by time interaction as fixed

418 effects. Random effects will be participant, MSW, and site. The model will provide an overall

419 treatment effect over 12 months, as well as estimates at individual time points, which will be

420 reported as adjusted mean differences with associated 95% confidence interval (CI) and p-

421 value. The primary time point of interest is four months.

422 A complier average causal effect (CACE) analysis will be conducted for the primary outcome
423 to account for non-compliance with the intervention. Exploratory subgroup analyses for a
424 range of moderators of effect for the primary outcomes at four months (e.g. LTC type, age,
425 depression history, socioeconomic status) will be undertaken.

426 Secondary continuous outcomes (PHQ9, GAD7, NEADL, De Jong Gierveld Scale [Social
427 loneliness subscale, Emotional loneliness subscale and overall], Lubben Social Network
428 Scale, Graded chronic pain scale revised) will be analysed using the same methods as
429 described for the primary analyses. The categorical outcome of depression status as identified
430 by the SCID-5 will be analysed using logistic regression and presented using odds ratios,
431 95% CIs and p-values.

432

433 *Economic Analyses*

434 The primary analysis of the economic evaluation will evaluate the cost effectiveness of the
435 MODS BA intervention compared to usual care for older adults with multiple LTCs and
436 depression from a National Health Service (NHS) and Personal Social Services (PSS)
437 perspective. The cost of the intervention will be obtained via the MODS team; while costs of
438 health and social service use data will be obtained from participants via a self-completed,
439 brief, bespoke questionnaire administered at each follow up. Health outcomes will be
440 measured in terms of quality-adjusted life years (QALYs) using the EQ-5D-3L questionnaire
441 and calculated using standard area-under-the-curve method. The differences in costs and
442 QALYs between the intervention and usual care groups, adjusted for baseline characteristics,
443 will be used to calculate the incremental cost-effectiveness ratio (ICER) against the
444 willingness-to-pay threshold in the UK. Uncertainties around the estimated ICER will be
445 explored using non-parametric bootstrapping methods with 5,000 iterations. The results will

446 be presented graphically on the cost-effectiveness plane and cost-effectiveness acceptability
447 curve. Sensitivity analyses will be conducted to test the robustness of the cost-effectiveness
448 results under various scenarios.

449 To assess the long-term cost effectiveness of the intervention beyond-trial evaluation using
450 model-based approach will be explored and considered if the within-trial evaluation results
451 deem appropriate (e.g. the intervention is not dominant by usual care). For the projection, a
452 decision model will be created using evidence from the MODS trial and the wider published
453 literature to produce an estimate of the long-term health outcomes and health care costs.
454 Probabilistic sensitivity analyses will be conducted to assess the robustness of the model
455 results.

456

457 **Ethical Considerations and Declarations**

458 The MODS trial received ethical approval from the Yorkshire and The Humber – Leeds West
459 Research Ethics Committee on 27th May 2022 (REC Ref: 22/YH/0071). The sponsor for
460 MODS is Tees, Esk and Wear Valleys NHS Foundation Trust.

461 Although our study population could be considered to be vulnerable, we do not foresee any
462 major ethical issues. Protection of the human rights and dignity of participants will be in
463 place during the trial, in line with the 1996 Helsinki Declaration. The study has been
464 designed to minimise any risk for the participants when taking part in the study. Participants'
465 wishes will be respected at all times, including the right to withdraw from the study at any
466 time without giving a reason. The interests of the patient will be held above those of science
467 and society and provision will be made for indemnity by the investigator and sponsor. Care
468 that is currently available via the NHS will not be withheld from participants.

469 Protocol amendments will be managed via the Health Research Authority, Research Ethics
470 Committee, and sponsor approvals process throughout the duration of the study.

471

472 **Qualitative Process Evaluation**

473 The qualitative process evaluation will explore the impact of the intervention on the physical
474 and mental functioning of MODS intervention participants. It will also explore pathways to
475 implementation by seeking to identify possible barriers and enablers to the delivery of the
476 intervention in practice, beyond the confines of a research study.

477 Approximately 20-25 semi-structured interviews will be conducted with intervention
478 participants, to include those who declined the intervention or who started sessions but
479 disengaged ('non-completers'); and those who completed the intervention ('completers').
480 Consent to take part in an interview will be obtained as part of a set of optional consent
481 statements upon study entry.

482 We will also conduct approximately 10 semi-structured interviews with caregivers or the
483 supportive others of intervention participants. Participants and MSWs will identify potential
484 caregivers/supportive others and consent will be sought to provide the MODS team with
485 contact details for sending a caregivers/supportive other information pack (containing a study
486 invitation letter, PIS, consent form and freepost envelope). Interested caregivers/supportive
487 others will complete a written consent form or verbal consent will be taken prior to
488 conducting the interview.

489 Interviews with participants and caregivers/supportive others will be conducted over the
490 telephone or via a virtual platform and last up to approximately 45 minutes. All interviews
491 will be conducted after completion of the primary outcome.

492 MODS support workers will be purposively sampled to include a range of characteristics,
493 including service/organisation type, job role, site and years of service. Three or four online
494 focus groups will be held with approximately 20 MSWs. Each group will include four to six
495 MSWs, ideally from different recruiting sites. MSWs will also be given the option of taking
496 part in one-to-one telephone interviews where they are unable to join a focus group, or if this
497 is their preferred method of providing feedback. MSWs will be invited to indicate their
498 interest by contacting the study team, discussing the opportunity with their MODS clinical
499 supervisor or by completing an online consent form. The focus groups will last approximately
500 45-60 minutes and will be conducted via an online platform. Semi-structured interviews will
501 be conducted by telephone or video call and will last around 30-45 minutes.

502 We will also aim to interview a cross-section of approximately 10 health and social care
503 professionals (e.g. GPs, hospital practitioners, social care managers). MSWs will help
504 identify these professionals where they have had contact as part of the collaborative care
505 aspect of the intervention. Interested health and social care professionals will be sent a study
506 information pack (containing a study invite letter, a PIS and a consent form) and invited to
507 complete an online consent form to register their interest.

508 Interviews/focus groups with the four participant groups (intervention participants;
509 caregivers/supportive others; MSWs; health and social care professionals) will be conducted
510 in parallel so that data analysis in each dataset enables modification of topic guides as the
511 study progresses, as appropriate. Interview topic guides will be tailored to each participant
512 group. Final numbers of participants will be determined by achievement of data saturation in
513 each dataset [32].

514 All interviews/focus groups will be digitally recorded (with participant consent), anonymised
515 and transcribed using a professional transcription service, with the transcripts forming the

516 raw data for analysis. Initially, thematic analysis [33] will be conducted using a framework
517 approach [34]. A coding framework will be developed, where codes will be examined across
518 individual transcripts as well as across the entire data set and allocated to the framework.
519 Using aspects of the constant comparison method of analysis [35, 36], broader categories
520 using linking codes will be developed across the transcripts. Further analysis will be guided
521 by Normalisation Process Theory (NPT) [37] framework to structure participants',
522 caregivers/supportive others' and health and social care professionals' views about
523 acceptability and implementation of the intervention and how it might be implemented in
524 routine services.

525

526 **Patient and Public Involvement**

527 The MODS PPI AG was convened in 2018 at the start of the MODS programme of research.
528 The group currently consists of seven individuals with a range of lived experience (including
529 older adults with physical-mental comorbidities) and caregivers/supportive others, and
530 includes the MODS PPI Co-Investigator.

531

532 The role of the PPI AG is to support the MODS research programme. Members of the
533 research team and the PPI AG have met on numerous occasions both in person and virtually
534 to discuss study procedures and materials. The PPI AG provided feedback on many aspects
535 of the design and delivery of the MODS RCT; this included the use of postal consent forms
536 and the development of recruitment, intervention, and participant materials. Importantly, they
537 provided guidance and advice on how best to engage older adults with LTCs and their
538 caregivers (where identified). The PPI AG will also be involved with the dissemination

539 strategy, to ensure the findings are accessible to a range of audiences, including study
540 participants and the public.

541

542 Our PPI Co-Investigator (JW) is part of our wider research team, and attends Programme
543 Management Group meetings, contributes to ongoing discussions relating to the progression
544 of the research programme and liaises with our Age UK partner. Two members of the PPI
545 AG also attend Programme Management Group meetings; this is done on a one-year term so
546 that each member of the PPI AG has the opportunity to attend Programme Management
547 Group meetings should they wish. This format was discussed with and agreed by the PPI AG
548 members. In addition, an independent PPI representative sits on the joint Programme Steering
549 Committee and Data Monitoring & Ethics Committee to provide PPI input for the entirety of
550 the programme.

551

552 **Study Status and Timeline**

553 Recruitment opened on 13th July 2022 and was estimated to be completed by 29th February
554 2024. Due to ongoing recruitment challenges, and following an unsuccessful application to
555 the funder to extend the study to meet the required sample size, recruitment will now cease
556 earlier than planned, closing on 21st December 2023. Intervention delivery is expected to
557 finish by April 2024. Follow up data collection will end in May 2024. The process evaluation
558 will be completed in full. The current MODS protocol is version 3.0 dated 8th June 2023.

559

560 **Discussion**

561 Older adults with two or more LTCs are at an increased risk of developing depression. NICE
562 highlights the need for research to evaluate care packages that are tailored to an individual's

563 physical and/or mental health needs, and which optimises services for older people with
564 multiple LTCs. MODS has been designed to respond to this growing need to address the
565 impact of multiple LTCs in older adults by targeting both physical and psychological
566 conditions within the same intervention.

567 BA is an evidence-based brief intervention that has been shown to reduce symptoms of
568 depression in older adults [11]. We adapted BA for use with older adults with both physical
569 and mental health conditions as part of the wider MODS programme. The MODS
570 intervention has been designed to be delivered by staff from a range of backgrounds and to be
571 delivered remotely.

572 The study has the potential to generate an effective care package which can be scaled up for
573 delivery across a range of settings, leading to significant benefit to the NHS and community-
574 based settings. Despite this, recruitment to the study proved challenging, mostly likely related
575 in part to the current and ongoing pressures within the NHS, particularly within primary care.
576 To this end, the decision was taken (by the funder following an unsuccessful application to
577 extend the study duration) to cease recruitment short of our estimated required sample size.
578 The detailed process evaluation will be completed in full and will provide rich data on the
579 impact of the intervention on the physical and mental health of older adults; important data
580 will also be generated to inform pathways to implementation of brief interventions to support
581 future research in this area. The delivery of the MODS RCT and its associated recruitment
582 challenges has provided important learning opportunities which will inform future mental
583 health research, especially where this involves recruitment of participants via NHS settings.

584

585

586 **References**

- 587 1. Office for National Statistics. Living longer: how our population is changing and why
588 it matters. Overview of population ageing in the UK and some of the implications for
589 the economy, public services, society and the individual, 2018.
- 590 2. Carpenter, B. D., Gatz, M., & Smyer, M. A. (2022). Mental health and aging in the
591 2020s. *American Psychologist*, 77(4), 538.
- 592 3. Ayalon, L., Chasteen, A., Diehl, M., Levy, B. R., Neupert, S. D., Rothermund, K., ...
593 & Wahl, H. W. (2021). Aging in times of the COVID-19 pandemic: Avoiding ageism
594 and fostering intergenerational solidarity. *The Journals of Gerontology: Series B*,
595 76(2), e49-e52.
- 596 4. NIHR. Strategic Framework for Multiple Long-Term Conditions (Multimorbidity)
597 MLTC-M Research [cited 2021 23rd November 2021]. Available from:
598 [https://www.nihr.ac.uk/documents/nihr-strategic-framework-for-multiple-long-term-](https://www.nihr.ac.uk/documents/nihr-strategic-framework-for-multiple-long-term-conditions-multimorbidity-mltc-m-research/24639)
599 [conditions-multimorbidity-mltc-m-research/24639](https://www.nihr.ac.uk/documents/nihr-strategic-framework-for-multiple-long-term-conditions-multimorbidity-mltc-m-research/24639)
- 600 5. Diehl, M., Wettstein, M., Spuling, S. M., & Wurm, S. (2021). Age-related change in
601 self-perceptions of aging: Longitudinal trajectories and predictors of change.
602 *Psychology and Aging*, 36(3), 344–359.
- 603 6. Dickens C, Katon W, Blakemore A, Khara A, McGowan L, Tomenson B, et al. Does
604 depression predict the use of urgent and unscheduled care by people with long term
605 conditions? A systematic review with meta-analysis. 2012;73(5):334-42.
- 606 7. Diagnostic and statistical manual of mental disorders (DSM-5) (2013) (5th ed.),
607 American Psychiatric Association, Washington, DC
- 608 8. NHS England. Five year forward view. 2014.
- 609 9. Carpenter, B.D., Gatz, M., Smyer, M.A. (2022) Mental Health and aging in the 2020s.
610 *American Psychologist*. 77(4) 538-550.

- 611 10. Gilbody S , Brabyn S , Mitchell A , et al .(2022) Can we prevent depression in at-risk
612 older adults using self-help? the UK SHARD trial of behavioral activation. *Am J*
613 *Geriatr Psychiatry*;30:197–207
- 614 11. Orgeta, V., Brede, J., Livingston, G. (2017). Behavioural activation for depression in
615 older people: a systematic review and meta-analysis. *The British Journal of*
616 *Psychiatry*, 211 (5), 274-279.
- 617 12. Samad Z , Brealey S , Gilbody S (2011) The effectiveness of behavioural therapy for
618 the treatment of depression in older adults: a meta-analysis. *Int J Geriatr Psychiatry*
619 26:12 11–20
- 620 13. Shearsmith, L., Coventry, P. A., Sloan, C., Henry, A., Newbronner, L., Littlewood,
621 E., ... & Chew-Graham, C. (2023). Acceptability of a behavioural intervention to
622 mitigate the psychological impacts of COVID-19 restrictions in older people with
623 long-term conditions: a qualitative study. *BMJ open*, 13(3), e064694.
- 624 14. Fingerman, K. L., Huo, M., Charles, S. T., & Umberson, D. J. (2020). Variety is the
625 spice of late life: Social integration and daily activity. *The Journals of Gerontology,*
626 *Series B: Psychological Sciences and Social Sciences*, 75(2), 377–388
- 627 15. Lee, S., Koffer, R. E., Sprague, B. N., Charles, S. T., Ram, N., & Almeida, D. M.
628 (2018). Activity diversity and its associations with psychological well-being across
629 adulthood. *The Journals of Gerontology, Series B: Psychological Sciences and Social*
630 *Sciences*, 73(6), 985–995.
- 631 16. Littlewood, E., McMillan, D., Graham, C. C., Bailey, D., Gascoyne, S., et al. (2022).
632 Can we mitigate the psychological impacts of social isolation using behavioural
633 activation? Long-term results of the UK BASIL urgent public health COVID-19 pilot
634 randomised controlled trial and living systematic review. *BMJ Ment Health*, 25(e1),
635 e49-e57.

- 636 17. Department of Health. Long Term Conditions Compendium of Information: third
637 edition. 2012, London: Department of Health. 2012.
- 638 18. NHS Digital. The Quality and Outcomes Framework 2021 [cited 2023 20th December
639 2023]. Available from: [https://digital.nhs.uk/data-and-information/data-tools-and-](https://digital.nhs.uk/data-and-information/data-tools-and-services/data-services/general-practice-data-hub/quality-outcomes-framework-qof)
640 [services/data-services/general-practice-data-hub/quality-outcomes-framework-qof](https://digital.nhs.uk/data-and-information/data-tools-and-services/data-services/general-practice-data-hub/quality-outcomes-framework-qof)
- 641 19. First MB, Williams JB, Karg RS, RL S. Structured clinical interview for DSM-5—
642 Research version (SCID-5 for DSM-5, research version; SCID-5-RV). *Arlington, VA:*
643 *American Psychiatric Association* 2015:1-94.
- 644 20. Henry JD, Crawford JR. The short-form version of the Depression Anxiety Stress
645 Scales (DASS-21): Construct validity and normative data in a large non-clinical
646 sample. *British Journal of Clinical Psychology*. 2005;44(2):227-39.
- 647 21. Ware Jr JE, Kosinski M, Keller SD. A 12-Item Short-Form Health Survey:
648 construction of scales and preliminary tests of reliability and validity. *Medical care*.
649 1996;34(3):220-33.
- 650 22. Kroenke K, Spitzer RL. The PHQ-9: A new depression and diagnostic severity
651 measure. *Psychiatr Ann*. 2002;32:509-21.
- 652 23. Spitzer RL, Kroenke K, Williams JBW, Lowe B. A Brief Measure for Assessing
653 Generalized Anxiety Disorder: The GAD-7. *Arch Intern Med*. 2006;166(10):1092-7.
- 654 24. Nouri FM, NB L. An extended activities of daily living scale for stroke patients.
655 *Clinical rehabilitation*. 1987 Nov; 1:301-5.
- 656 25. De Jong-Gierveld J, Kamphuls F. The development of a Rasch-type loneliness scale.
657 *Applied Psychological Measurement*. 1985;9(3):289-99.
- 658 26. Lubben JE. Assessing social networks among elderly populations. *Family and*
659 *community health*. 1988 Nov 1;11(3):42-52.

- 660 27. EuroQual Group. EuroQol: A new Instrument for the measurement of Health Related
661 Quality of Life. 1990;16:199-208
- 662 28. Cahill J, Stiles EB, Barkham M, Hardy GE, Stone G, Agnew-Davis R, et al. Two
663 short forms of the Agnew Relationship Measure: The ARM-5 and ARM-12.
664 Psychotherapy Research 2012;22:241-55.
- 665 29. Gilbody S, Littlewood E, McMillan D, Chew-Graham CA, Bailey D, Gascoyne S, et
666 al. Behavioural activation to prevent depression and loneliness among socially
667 isolated older people with long-term conditions: The BASIL COVID-19 pilot
668 randomised controlled trial. PLoS medicine 2021;18:e1003779.
- 669 30. Gilbody S, Lewis H, Adamson J, Atherton K, Bailey D, Birtwistle J, et al. Effect of
670 collaborative care vs usual care on depressive symptoms in older adults with
671 subthreshold depression: the CASPER randomized clinical trial. 2017;317:728-37.
- 672 31. Busija L, Ackerman IN, Haas R, Wallis J, Nolte S, Bentley S, et al. Adult Measures
673 of General Health and Health-Related Quality of Life. Arthritis Care & Research
674 2020;72:522-64. <https://doi.org/https://doi.org/10.1002/acr.24216>
- 675 32. Saunders B, Sim J, Kingstone T, Baker S, Waterfield J, Bartlam B, et al. Saturation in
676 qualitative research: exploring its conceptualization and operationalization. Quality &
677 quantity 2018;52(4):1893-907.
- 678 33. Braun V, Clarke V. Using thematic analysis in psychology. Qualitative research in
679 psychology 2006;3(2):77-101.
- 680 34. Gale NK, Heath G, Cameron E, Rashid S, Redwood S. Using the framework method
681 for the analysis of qualitative data in multi-disciplinary health research. BMC medical
682 research methodology 2013;13(1):1-8.
- 683 35. Glaser BG. The constant comparative method of qualitative analysis. Social problems
684 1965;12(4):436-45.

- 685 36. Fram SM. The constant comparative analysis method outside of grounded theory.
686 Qualitative Report 2013;18:1.
- 687 37. May C, Finch T. Implementing, embedding, and integrating practices: an outline of
688 normalization process theory. Sociology 2009;43(3):535-54.

689

690 **Contributions of Authors**

691 **Conceptualization:** David Ekers, Simon Gilbody, Dean McMillan, Carolyn A. Chew

692 Graham, Peter Coventry, Catherine Hewitt, Gemma Traviss-Turner, Karina Lovell, Sarah

693 Dexter Smith, Andrew Clegg, Tom Gentry, Andrew J Hill, Elizabeth Littlewood, Della

694 Bailey, Judith Webster

695 **Data curation:** Caroline Fairhurst, Kalpita Baird, Catherine Hewitt, Katharine Bosanquet,

696 Elizabeth Littlewood, Lucy Atha, Lauren Burke, Leanne Shearsmith, Han-I Wang

697 **Formal analysis:** Caroline Fairhurst, Catherine Hewitt, Kalpita Baird, Carolyn A Chew-

698 Graham, Peter Coventry, Katharine Bosanquet, Han-I Wang

699 **Funding acquisition:** Simon Gilbody, David Ekers, Carolyn A. Chew-Graham, Dean

700 McMillan, Catherine Hewitt, Peter Coventry, Gemma Traviss-Turner, Karina Lovell, Sarah

701 Dexter Smith, Andrew Clegg, Tom Gentry, Andrew J Hill

702 **Investigation:** Eloise Ryde, Kelly Hollingsworth, Elizabeth Littlewood, Della Bailey, Lucy

703 Atha, Leanne Shearsmith, Katharine Bosanquet, Dean McMillan, Lauren Burke, Suzanne

704 Crosland, Heather Baker, Janine Heeley, Elizabeth Agnew, Heidi Stevens, Katie Webb

705 **Methodology:** Elizabeth Littlewood, David Ekers, Simon Gilbody, Carolyn A. Chew-

706 Graham, Dean McMillan, Peter Coventry, Caroline Fairhurst, Catherine Hewitt, Katharine

707 Bosanquet, Han-I Wang, Gemma Traviss-Turner, Andrew Clegg, Andrew J Hill, Karina

708 Lovell

709 **Project administration:** David Ekers, Simon Gilbody, Elizabeth Littlewood, Lucy Atha,
710 Dean McMillan, Lauren Burke, Della Bailey, Carolyn A Chew-Graham, Peter Coventry,
711 Katharine Bosanquet, Han-I Wang

712 **Resources:** Dean McMillan, Della Bailey, Carolyn A Chew-Graham, David Ekers, Caroline
713 Fairhurst, Kalpita Baird, Catherine Hewitt, Han-I Wang

714 **Software:** Caroline Fairhurst, Catherine Hewitt, Kalpita Baird, Han-I Wang

715 **Supervision:** Simon Gilbody, David Ekers, Dean McMillan, Carolyn A. Chew-Graham,
716 Peter Coventry, Elizabeth Littlewood, Della Bailey, Suzanne Crosland, Lucy Atha, Lauren
717 Burke

718 **Validation:** David Ekers, Simon Gilbody, Caroline Fairhurst, Kalpita Baird, Catherine
719 Hewitt, Carolyn A Chew-Graham, Peter Coventry, Katharine Bosanquet, Han-I Wang

720 **Visualization:** Eloise Ryde, Kelly Hollingsworth, Elizabeth Littlewood

721 **Writing – original draft:** Eloise Ryde, Kelly Hollingsworth, Elizabeth Littlewood, Leanne
722 Shearsmith, Della Bailey, Heather Baker, Lucy Atha, Katharine Bosanquet, Caroline
723 Fairhurst, Kalpita Baird, Han-I Wang

724 **Writing – review & editing:** Eloise Ryde, Kelly Hollingsworth, Elizabeth Littlewood, Della
725 Bailey, Heather Baker, Lucy Atha, Katharine Bosanquet, Leanne Shearsmith, Caroline
726 Fairhurst, Han-I Wang, David Ekers, Simon Gilbody, Carolyn A. Chew-Graham, Dean
727 McMillan, Peter Coventry, Andrew J Hill, Andrew Clegg, Suzanne Crosland, Judith
728 Webster, Catherine Hewitt, Gemma Traviss-Turner, Karina Lovell, Sarah Dexter Smith, Tom
729 Gentry, Lauren Burke, Katie Webb, Heidi Stevens.

730

731 **Acknowledgements**

732 We would like to thank: (1) all the participants for taking part in the trial, (2) general practice
733 and Local Clinical Research Network staff for identifying and facilitating recruitment of

734 participants, (3) research sites and intervention delivery staff for aiding with study delivery
735 and follow up activities, (4) the independent joint Programme Steering and Data Monitoring
736 and Ethics Committee members for overseeing the study, and (5) our PPI AG members for
737 their continued support, guidance and collaboration.

738

739 **Supporting Information**

740 S1 File. SPIRIT checklist. (DOC)

741 S2 File. MODS WS3-4 Trial Protocol v3.0 08.06.23. (PDF)

Fig 1 . SPIRIT schedule of enrollment, interventions, and assessments.

	Enrolment	Allocation	Post-allocation		
TIMEPOINT**	$-t_1$	0	4 months post randomisation	8 months post randomisation	12 months post randomisation
ENROLMENT:					
Eligibility screen	X				
Informed consent	X				
Baseline questionnaire and randomisation	X				
Allocation		X			
INTERVENTIONS:					
Behavioural Activation (BA) intervention		←————→			
Usual care		←————→			
ASSESSMENTS:					
Demographic information	X				
Health service use questionnaire	X		X	X	X
Primary outcome	X		X	X	X
Secondary outcomes	X		X	X	X

medRxiv preprint doi: <https://doi.org/10.1101/2024.01.10.24301134>; this version posted January 11, 2024. The copyright holder for this preprint (which was not certified by peer review) is the author/funder, who has granted medRxiv a license to display the preprint in perpetuity. It is made available under a [CC-BY 4.0 International license](https://creativecommons.org/licenses/by/4.0/).

Figure 1

Figure 2: MODS CONSORT flow diagram

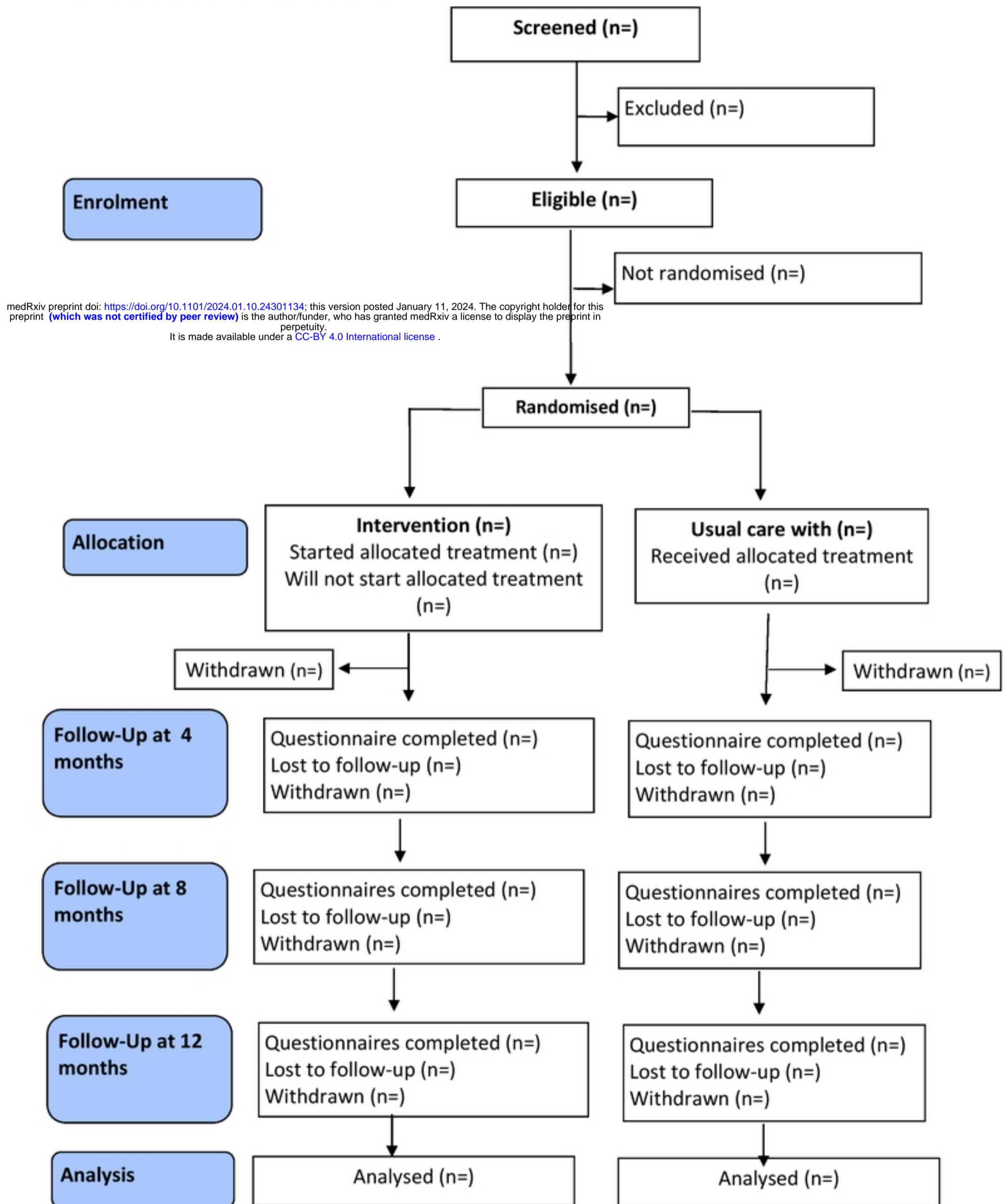


Figure 2