

	Isolate	VRC07-523LS	VRC01
IC ₅₀ (µg/mL)	H703_0646_051sN	0.98	7.38
	H703_1471_190s	0.03	0.17
	H703_1750_140Es	0.32	0.99
	H704_0726_080sN	0.91	4.7
	H704_1535_030sN	0.06	0.1
	H704_2544_140eN01	0.16	0.79
	PVO.4	0.17	0.54
IC ₈₀ (µg/mL)	H703_0646_051sN	2.75	20.45
	H703_1471_190s	0.09	0.41
	H703_1750_140Es	1.14	2.66
	H704_0726_080sN	2.76	15.5
	H704_1535_030sN	0.19	0.27
	H704_2544_140eN01	0.53	2.48
	PVO.4	0.51	1.32

Supplemental Table 1. In vitro IC₅₀ and IC₈₀ of the clinical lot of two bnAbs (VRC07-523LS and VRC01) against seven Env-pseudotyped viruses. The *env* sequences are derived from isolates sequenced from incident acquisition events from the AMP studies.

Supplemental Table 2A: Discomfort acceptability of IV, SC, and IM infusion

Question	Route	Visit	Visit description	No discomfort	Discomfort acceptable	Discomfort not acceptable
Level of discomfort from [IV infusion/SC injection(s)/IM injection(s)]	IV	Day 0	1st SPA	52/59 88.1%	6/59 10.2%	1/59 1.7%
		Month 4	2nd SPA	46/55 83.6%	9/55 16.4%	0/55 0.0%
		Month 8	3rd SPA	43/51 84.3%	8/51 15.7%	0/51 0.0%
		Month 12	4th SPA	41/49 83.7%	8/49 16.3%	0/49 0.0%
		Month 16	5th SPA	38/44 86.4%	6/44 13.6%	0/44 0.0%
	SC	Day 0	1st SPA	22/41 53.7%	18/41 43.9%	1/41 2.4%
		Month 4	2nd SPA	13/40 32.5%	26/40 65.0%	1/40 2.5%
		Month 8	3rd SPA	19/37 51.4%	18/37 48.6%	0/37 0.0%
		Month 12	4th SPA	14/33 42.4%	18/33 54.5%	1/33 3.0%
		Month 16	5th SPA	15/31 48.4%	15/31 48.4%	1/31 3.2%
	IM	Day 0	1st SPA	16/24 66.7%	8/24 33.3%	0/24 0.0%
		Month 4	2nd SPA	12/23 52.2%	11/23 47.8%	0/23 0.0%
		Month 8	3rd SPA	15/23 65.2%	8/23 34.8%	0/23 0.0%
		Month 12	4th SPA	14/20 70.0%	6/20 30.0%	0/20 0.0%
		Month 16	5th SPA	14/20 70.0%	6/20 30.0%	0/20 0.0%

Supplemental Table 2B: Pain acceptability of IV, SC, and IM infusion

Question	Route	Visit	Visit description	No pain	Pain acceptable	Pain not acceptable
Level of pain from [IV infusion/SC injection(s)/IM injection(s)]	IV	Day 0	1st SPA	54/59 91.5%	5/59 8.5%	0/59 0.0%
		Month 4	2nd SPA	50/55 90.9%	4/55 7.3%	1/55 1.8%
		Month 8	3rd SPA	46/51 90.2%	5/51 9.8%	0/51 0.0%
		Month 12	4th SPA	45/49 91.8%	4/49 8.2%	0/49 0.0%
		Month 16	5th SPA	40/44 90.9%	4/44 9.1%	0/44 0.0%
	SC	Day 0	1st SPA	20/41 48.8%	20/41 48.8%	1/41 2.4%
		Month 4	2nd SPA	21/40 52.5%	18/40 45.0%	1/40 2.5%
		Month 8	3rd SPA	20/37 54.1%	16/37 43.2%	1/37 2.7%
		Month 12	4th SPA	14/33 42.4%	17/33 51.5%	2/33 6.1%
		Month 16	5th SPA	17/31 54.8%	13/31 41.9%	1/31 3.2%
	IM	Day 0	1st SPA	12/24 50.0%	12/24 50.0%	0/24 0.0%
		Month 4	2nd SPA	12/23 52.2%	10/23 43.5%	1/23 4.3%
		Month 8	3rd SPA	12/23 52.2%	11/23 47.8%	0/23 0.0%
		Month 12	4th SPA	11/20 55.0%	9/20 45.0%	0/20 0.0%
		Month 16	5th SPA	14/20 70.0%	6/20 30.0%	0/20 0.0%

Supplemental Table 2C: Anxiety acceptability of IV, SC, and IM infusion

Question	Route	Visit	Visit description	No anxiety	Anxiety acceptable	Anxiety not acceptable
Level of anxiety from [IV infusion/SC injection(s)/IM injection(s)]	IV	Day 0	1st SPA	56/59 94.9%	3/59 5.1%	0/59 0.0%
		Month 4	2nd SPA	51/55 92.7%	4/55 7.3%	0/55 0.0%
		Month 8	3rd SPA	46/51 90.2%	5/51 9.8%	0/51 0.0%
		Month 12	4th SPA	45/49 91.8%	4/49 8.2%	0/49 0.0%
		Month 16	5th SPA	43/44 97.7%	1/44 2.3%	0/44 0.0%
	SC	Day 0	1st SPA	30/41 73.2%	11/41 26.8%	0/41 0.0%
		Month 4	2nd SPA	35/40 87.5%	5/40 12.5%	0/40 0.0%
		Month 8	3rd SPA	35/37 94.6%	2/37 5.4%	0/37 0.0%
		Month 12	4th SPA	29/33 87.9%	3/33 9.1%	1/33 3.0%
		Month 16	5th SPA	27/31 87.1%	4/31 12.9%	0/31 0.0%
	IM	Day 0	1st SPA	19/24 79.2%	5/24 20.8%	0/24 0.0%
		Month 4	2nd SPA	20/23 87.0%	3/23 13.0%	0/23 0.0%
		Month 8	3rd SPA	23/23 100.0%	0/23 0.0%	0/23 0.0%
		Month 12	4th SPA	18/20 90.0%	2/20 10.0%	0/20 0.0%
		Month 16	5th SPA	17/20 85.0%	3/20 15.0%	0/20 0.0%

Supplemental Table 2D: Amount of time acceptability of IV, SC, and IM infusion

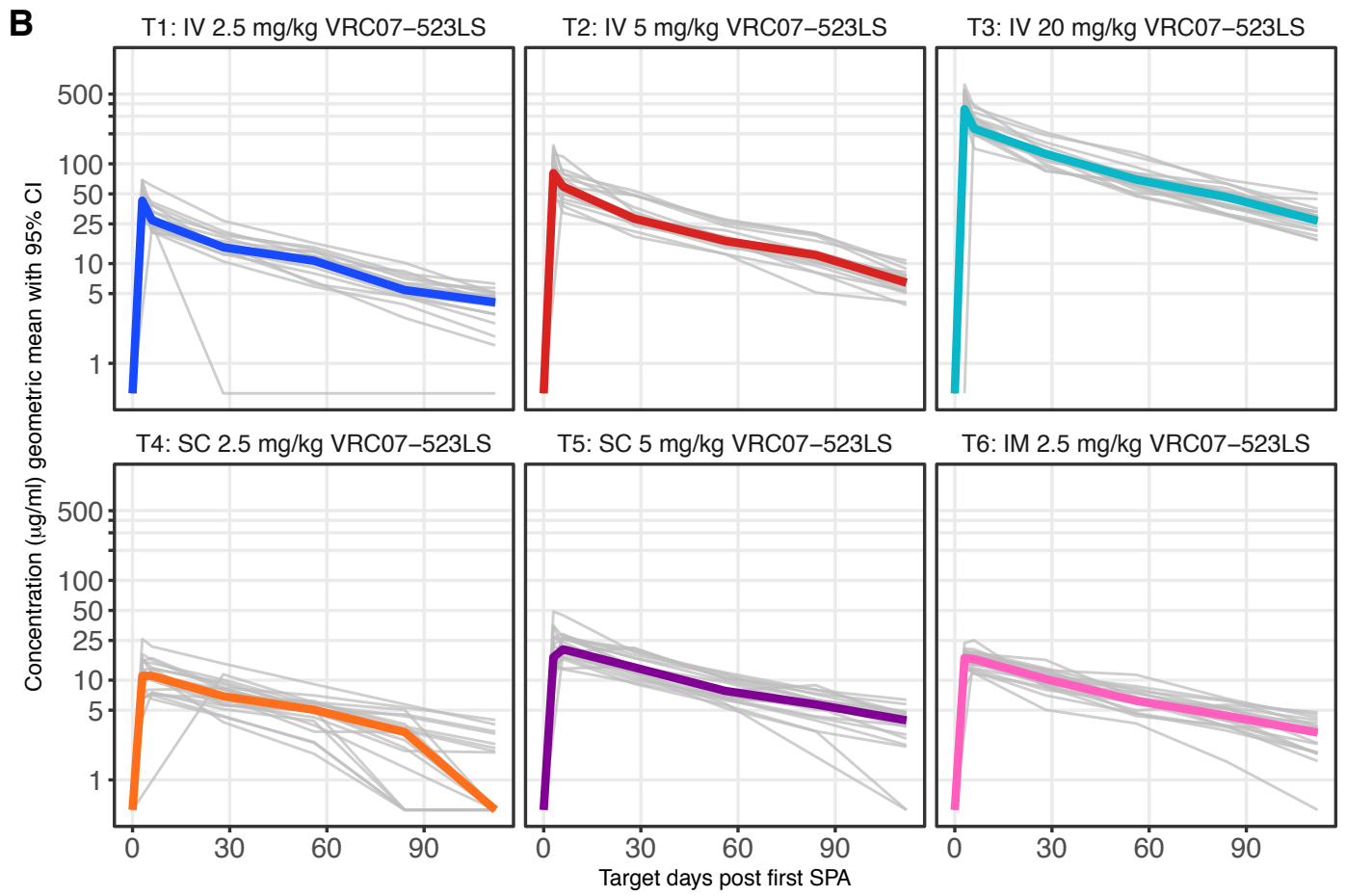
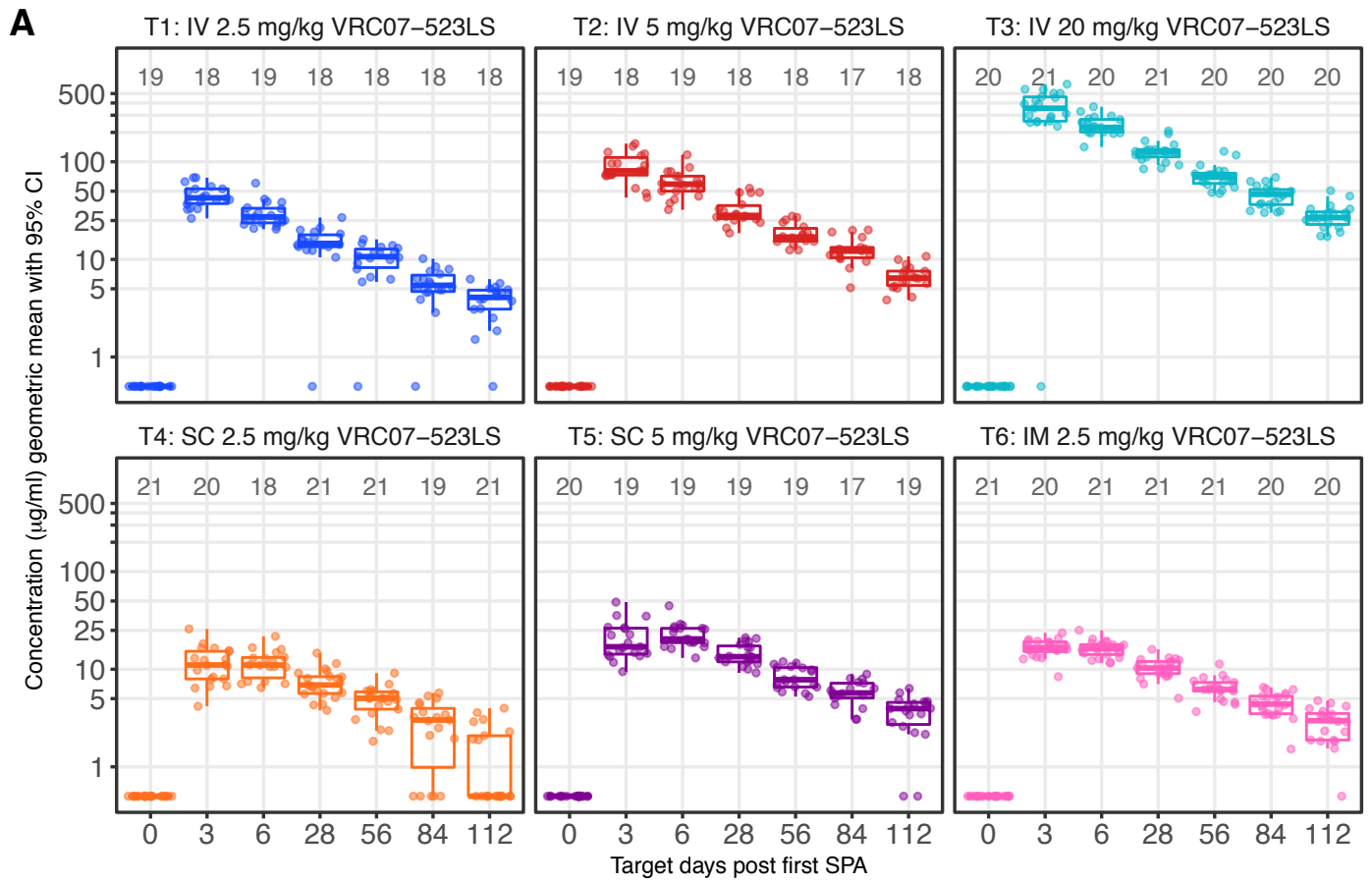
Question	Route	Visit	Visit description	Amount of time acceptable	Amount of time not acceptable
The amount of time required to spend in the clinic during the [IV infusion/SC injection(s)/IM injection(s)]	IV	Day 0	1st SPA	54/59 91.5%	5/59 8.5%
		Month 4	2nd SPA	54/55 98.2%	1/55 1.8%
		Month 8	3rd SPA	48/51 94.1%	3/51 5.9%
		Month 12	4th SPA	47/49 95.9%	2/49 4.1%
		Month 16	5th SPA	43/44 97.7%	1/44 2.3%
	SC	Day 0	1st SPA	41/41 100.0%	0/41 0.0%
		Month 4	2nd SPA	39/40 97.5%	1/40 2.5%
		Month 8	3rd SPA	35/37 94.6%	2/37 5.4%
		Month 12	4th SPA	29/33 87.9%	4/33 12.1%
		Month 16	5th SPA	27/31 87.1%	4/31 12.9%
	IM	Day 0	1st SPA	22/24 91.7%	2/24 8.3%
		Month 4	2nd SPA	23/23 100.0%	0/23 0.0%
		Month 8	3rd SPA	23/23 100.0%	0/23 0.0%
		Month 12	4th SPA	20/20 100.0%	0/20 0.0%
		Month 16	5th SPA	20/20 100.0%	0/20 0.0%

Supplemental Table 2E: Willingness to use of IV, SC, and IM infusion in general population

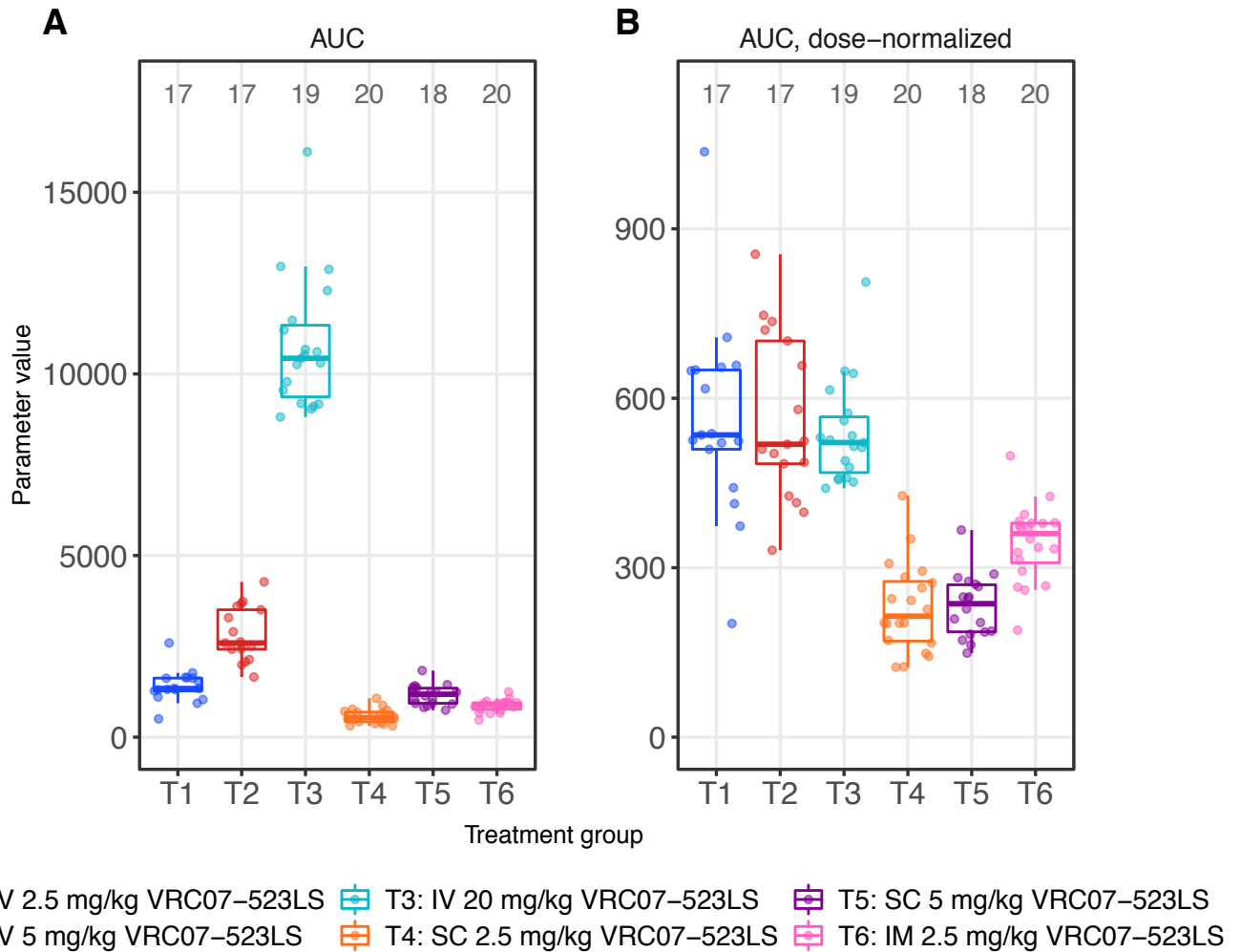
Question	Route	Visit	Visit description	Very willing	Somewhat willing	Not willing
How willing would you be to get [IV infusions/SC injections/IM injection(s)] to prevent you from getting a serious disease, such as HIV, if you were at risk for that disease?	IV	Day 0	1st SPA	47/59 79.7%	12/59 20.3%	0/59 0.0%
		Month 4	2nd SPA	46/55 83.6%	9/55 16.4%	0/55 0.0%
		Month 8	3rd SPA	41/51 80.4%	10/51 19.6%	0/51 0.0%
		Month 12	4th SPA	41/49 83.7%	8/49 16.3%	0/49 0.0%
		Month 16	5th SPA	37/44 84.1%	7/44 15.9%	0/44 0.0%
	SC	Day 0	1st SPA	35/41 85.4%	5/41 12.2%	1/41 2.4%
		Month 4	2nd SPA	32/40 80.0%	8/40 20.0%	0/40 0.0%
		Month 8	3rd SPA	32/37 86.5%	5/37 13.5%	0/37 0.0%
		Month 12	4th SPA	27/33 81.8%	6/33 18.2%	0/33 0.0%
		Month 16	5th SPA	24/31 77.4%	6/31 19.4%	1/31 3.2%
	IM	Day 0	1st SPA	22/24 91.7%	2/24 8.3%	0/24 0.0%
		Month 4	2nd SPA	22/23 95.7%	1/23 4.3%	0/23 0.0%
		Month 8	3rd SPA	22/23 95.7%	1/23 4.3%	0/23 0.0%
		Month 12	4th SPA	20/20 100.0%	0/20 0.0%	0/20 0.0%
		Month 16	5th SPA	20/20 100.0%	0/20 0.0%	0/20 0.0%

Supplemental Table 2F: Recommendations for use of IV, SC, and IM infusion in general population

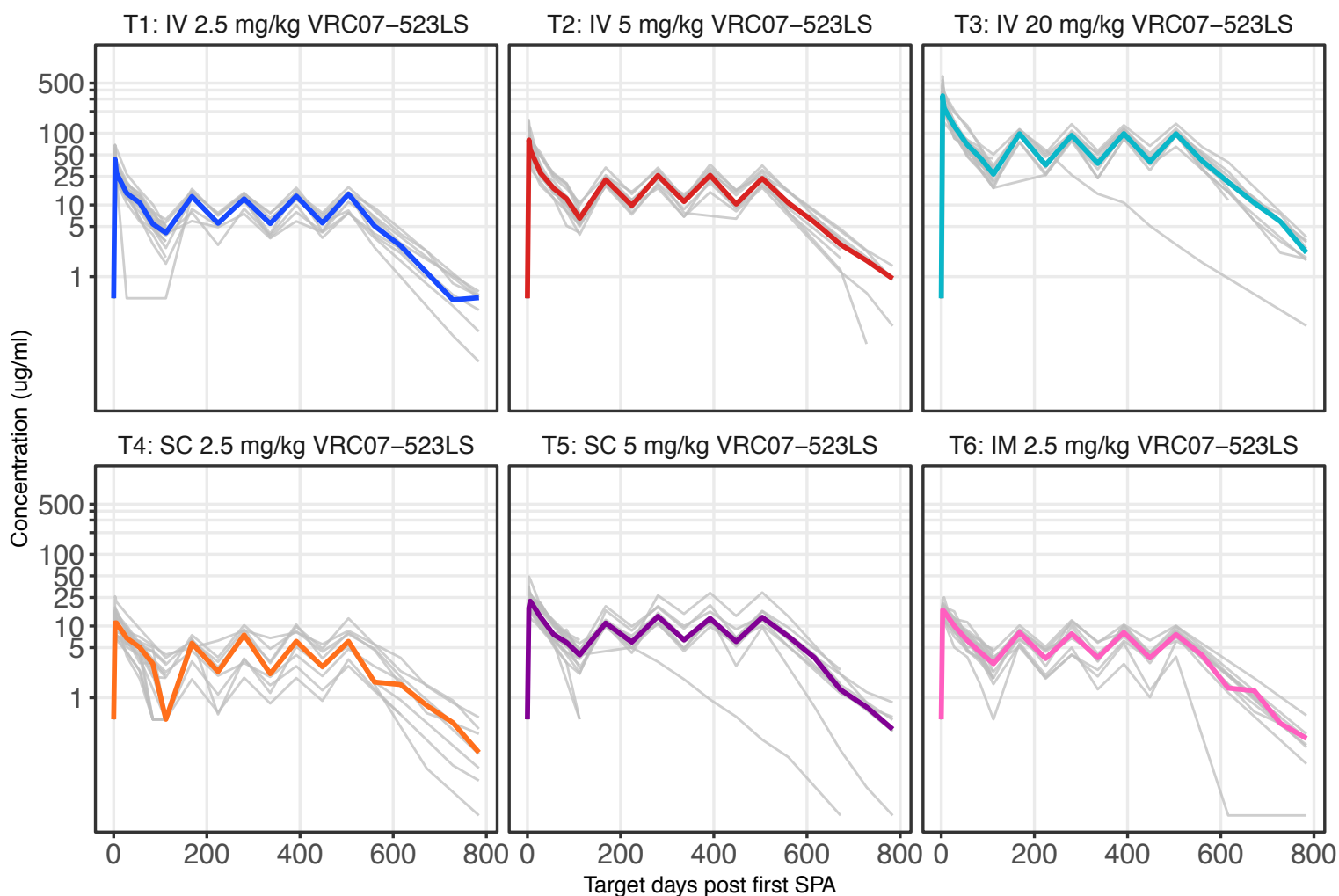
Question	Route	Visit	Visit description	Yes	No	Don't know
Would you recommend receiving the [IV infusion/SC injection(s)/IM injection(s)] to a friend who is at risk for HIV?	IV	Day 0	1st SPA	54/59 91.5%	1/59 1.7%	4/59 6.8%
		Month 4	2nd SPA	52/55 94.5%	0/55 0.0%	3/55 5.5%
		Month 8	3rd SPA	49/51 96.1%	0/51 0.0%	2/51 3.9%
		Month 12	4th SPA	47/49 95.9%	1/49 2.0%	1/49 2.0%
		Month 16	5th SPA	43/44 97.7%	0/44 0.0%	1/44 2.3%
	SC	Day 0	1st SPA	40/41 97.6%	1/41 2.4%	0/41 0.0%
		Month 4	2nd SPA	38/40 95.0%	1/40 2.5%	1/40 2.5%
		Month 8	3rd SPA	34/37 91.9%	0/37 0.0%	3/37 8.1%
		Month 12	4th SPA	30/33 90.9%	1/33 3.0%	2/33 6.1%
		Month 16	5th SPA	24/31 77.4%	3/31 9.7%	4/31 12.9%
	IM	Day 0	1st SPA	24/24 100.0%	0/24 0.0%	0/24 0.0%
		Month 4	2nd SPA	23/23 100.0%	0/23 0.0%	0/23 0.0%
		Month 8	3rd SPA	23/23 100.0%	0/23 0.0%	0/23 0.0%
		Month 12	4th SPA	20/20 100.0%	0/20 0.0%	0/20 0.0%
		Month 16	5th SPA	19/20 95.0%	0/20 0.0%	1/20 5.0%



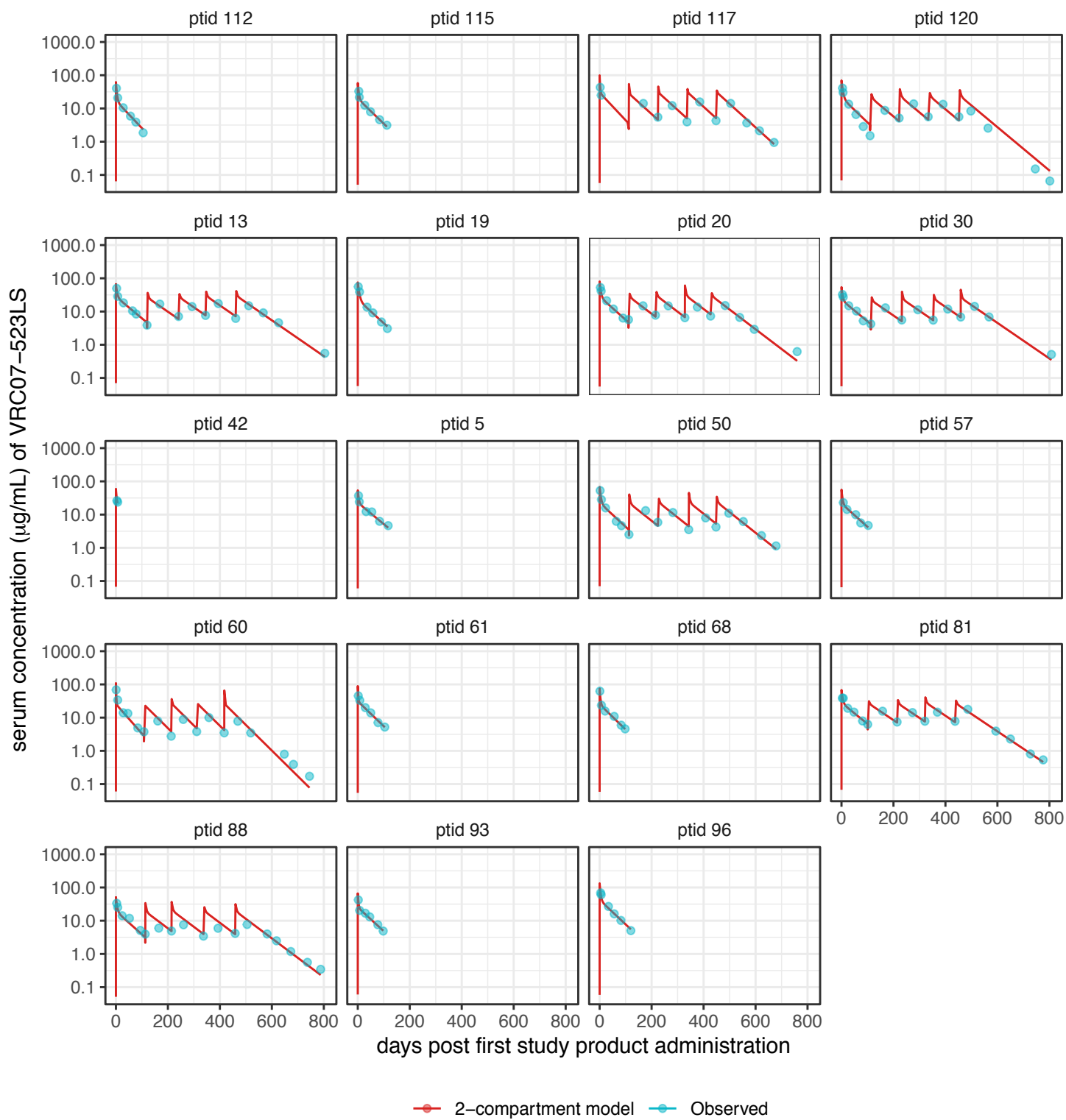
Supplemental Figure 1. VRC07-523LS levels following first study product administration (SPA). Individual measurements are shown in Panel A; note X-axis is not to scale. Longitudinal per-participant levels are shown in Panel B.



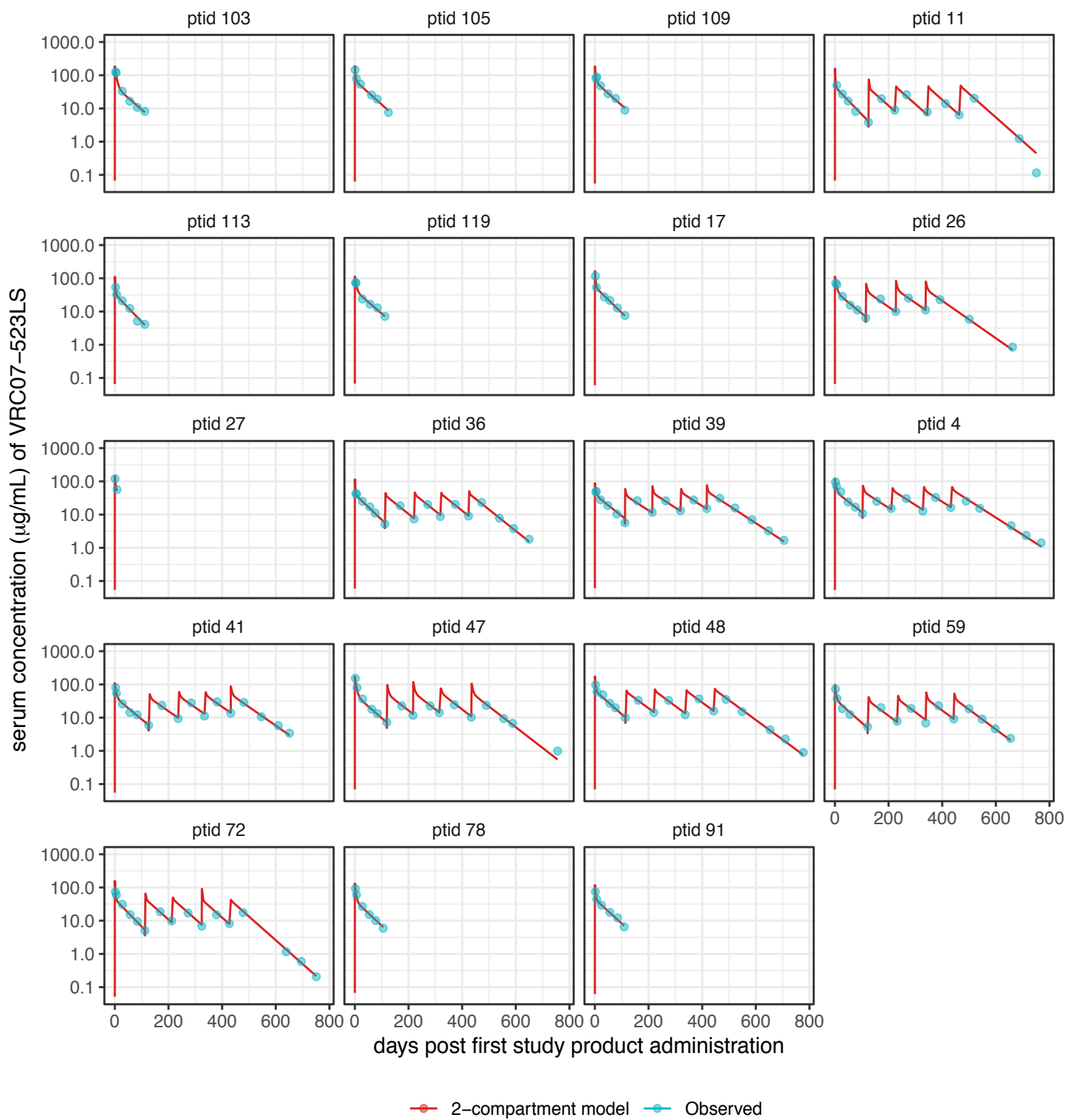
Supplemental Figure 2. VRC07-523LS serum concentrations were measured following the first study product administration and the area under the curve (AUC, panel **A**) and AUC corrected for dose (**B**) were computed to characterize the pharmacokinetics of VRC07-523LS.



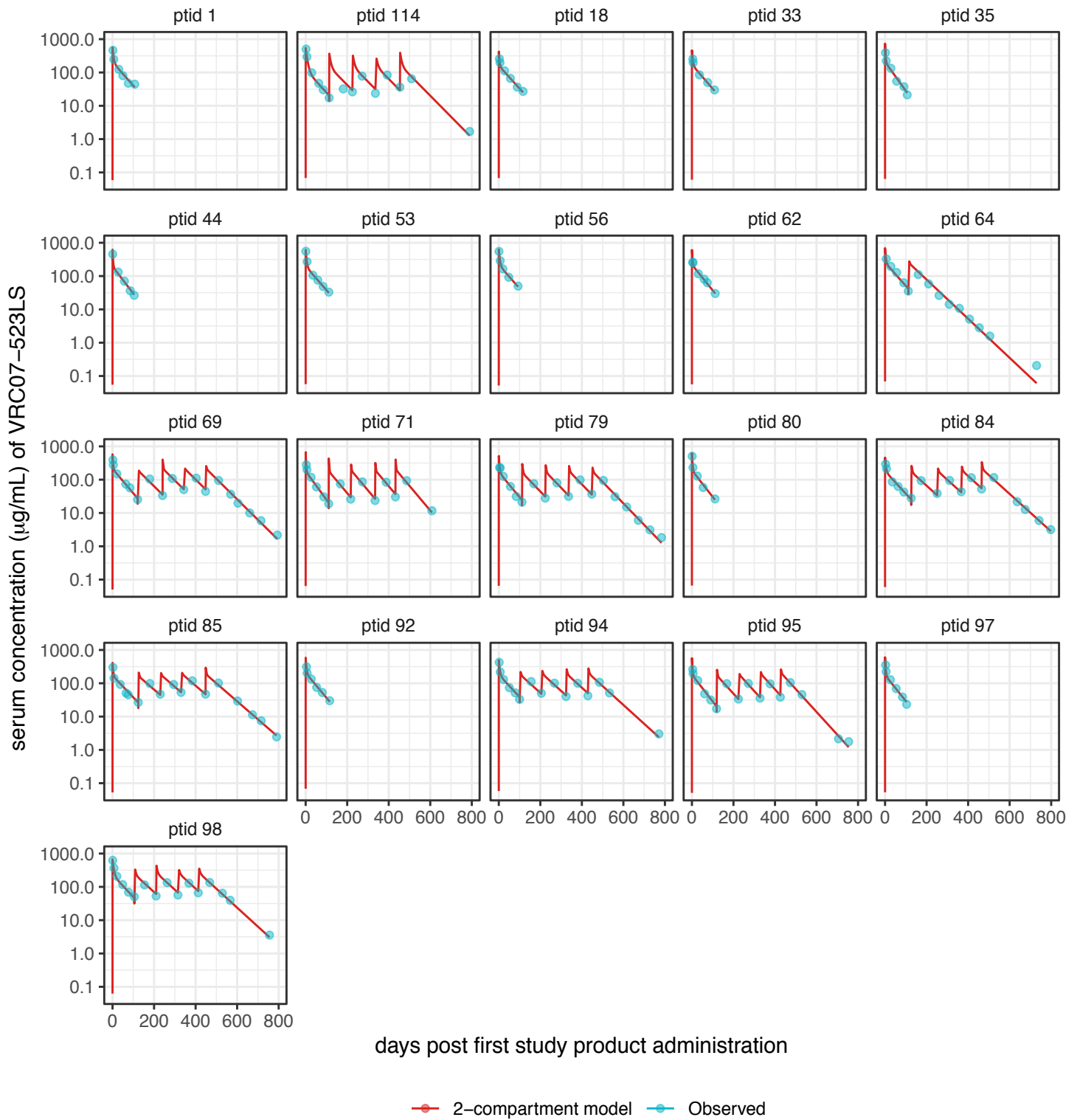
Supplemental Figure 3. VRC07-523LS concentrations measured after product administration every four months at specified doses and routes. Peak levels were only assessed after the first dose. Levels following the the second and subsequent doses were assessed by binding antigen multiplex assay (BAMA). Individual-level data are shown in grey and the group median is shown in colour.



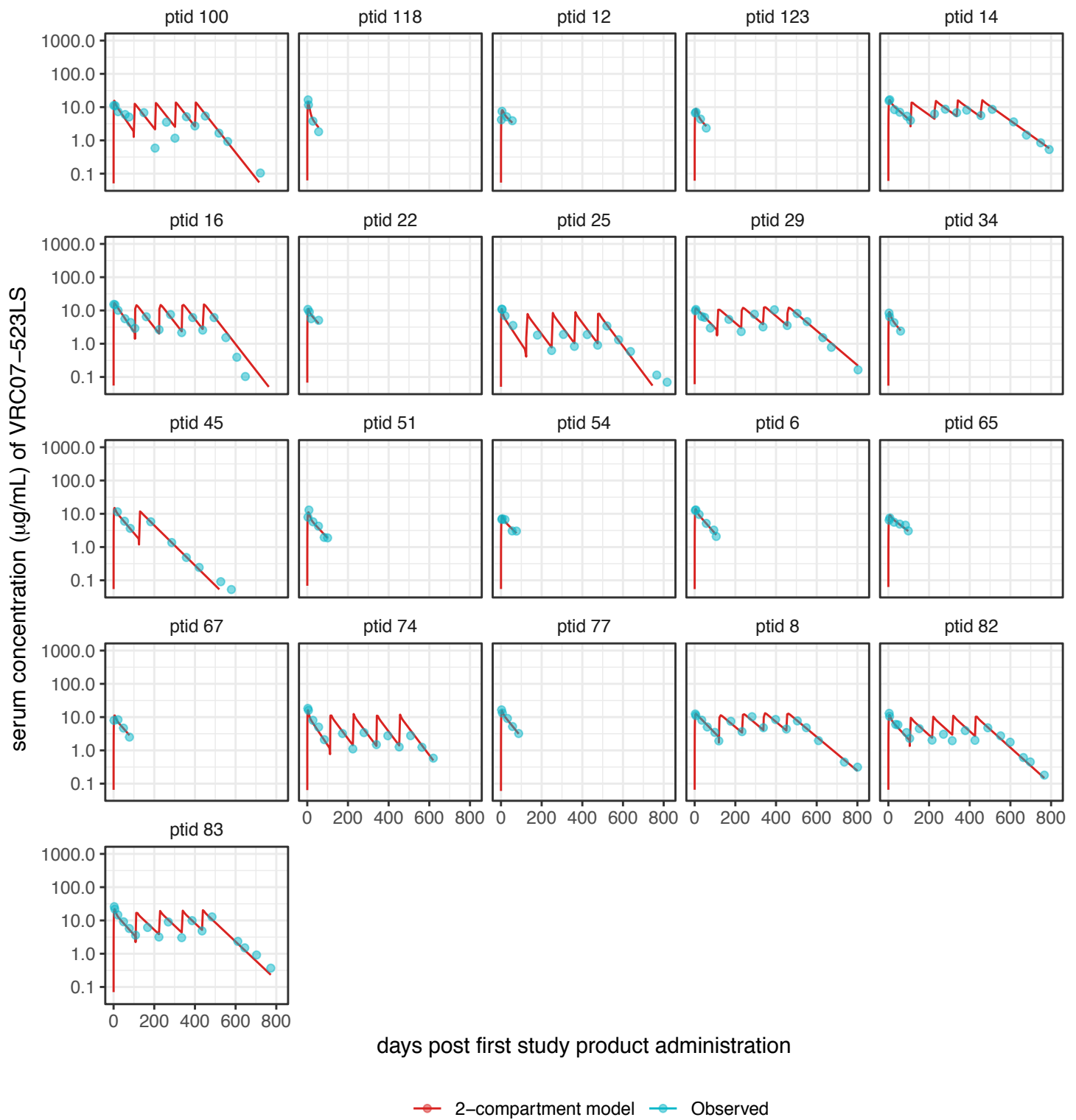
Supplemental Figure 4A. Observed (·) and predicted (—) serum concentrations of VRC07-523LS as a function of time in individual participants (one per plot); Group 1 (IV 2.5 mg/kg) is shown. The two-compartment population PK model with fully unstructured random effects variance-covariance matrix was fitted to VRC07-523LS concentrations.



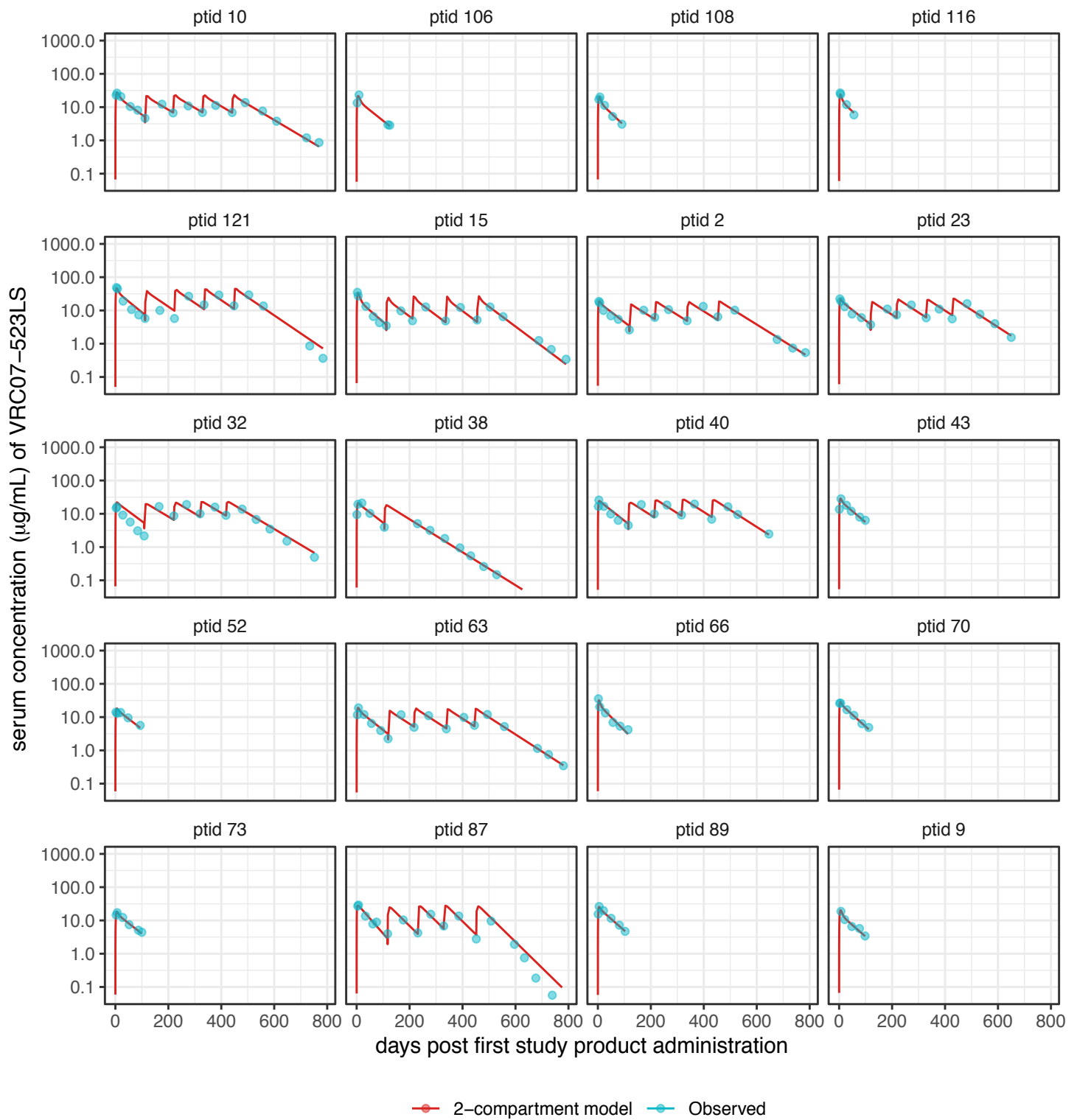
Supplemental Figure 4B. Observed (·) and predicted (–) serum concentrations of VRC07-523LS as a function of time in individual participants (one per plot); Group 2 (IV 5 mg/kg) is shown. The two-compartment population PK model with fully unstructured random effects variance-covariance matrix was fitted to VRC07-523LS concentrations.



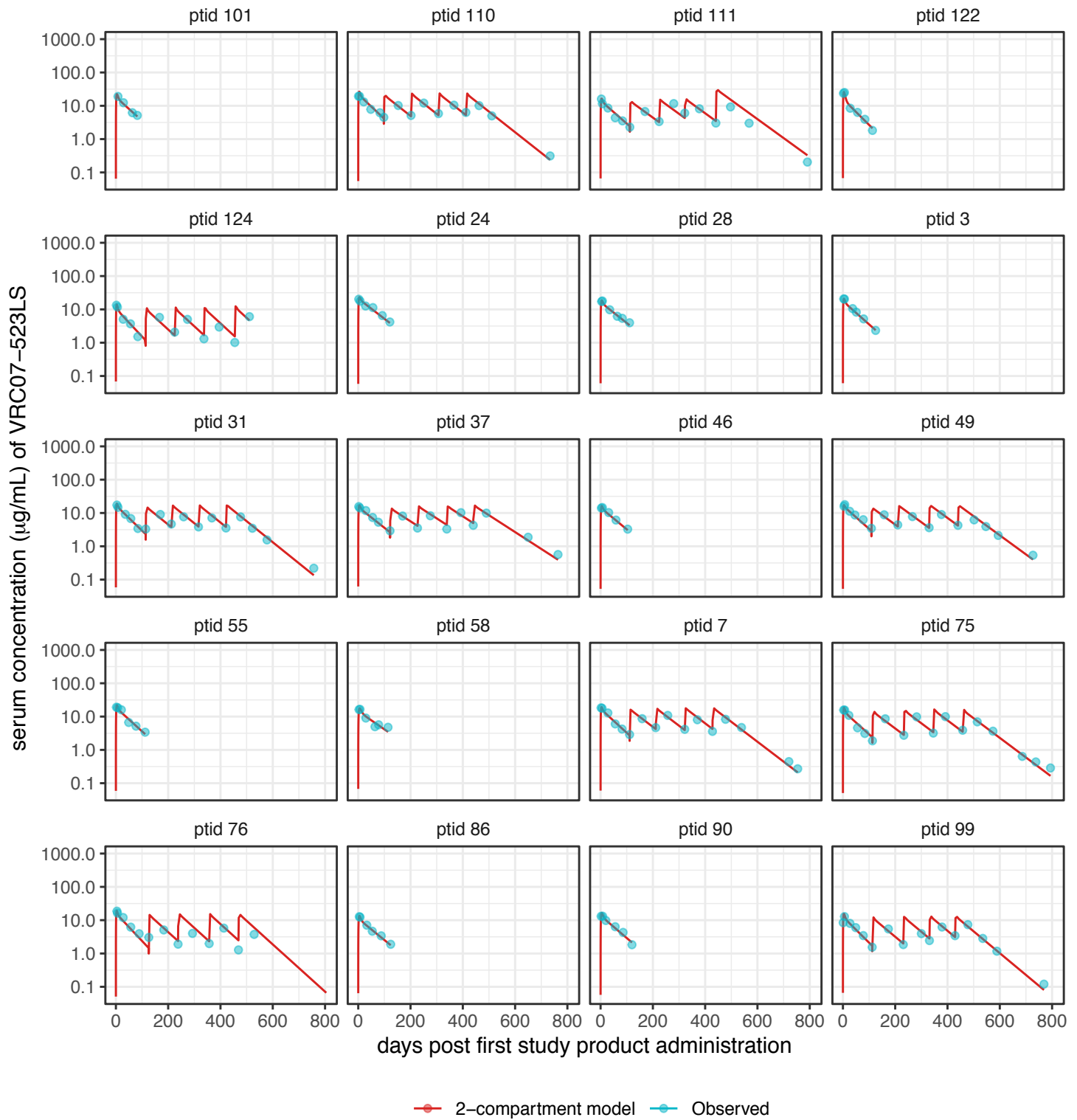
Supplemental Figure 4C. Observed (·) and predicted (–) serum concentrations of VRC07-523LS as a function of time in individual participants (one per plot); Group 3 (IV 20 mg/kg) is shown. The two-compartment population PK model with fully unstructured random effects variance-covariance matrix was fitted to VRC07-523LS concentrations.



Supplemental Figure 4D. Observed (·) and predicted (–) serum concentrations of VRC07-523LS as a function of time in individual participants (one per plot); Group 4 (SC 2.5 mg/kg) is shown. The two-compartment population PK model with fully unstructured random effects variance-covariance matrix was fitted to VRC07-523LS concentrations.



Supplemental Figure 4E. Observed (·) and predicted (—) serum concentrations of VRC07-523LS as a function of time in individual participants (one per plot); Group 5 (SC 5 mg/kg) is shown. The two-compartment population PK model with fully unstructured random effects variance-covariance matrix was fitted to VRC07-523LS concentrations.



Supplemental Figure 4F. Observed (·) and predicted (—) serum concentrations of VRC07-523LS as a function of time in individual participants (one per plot); Group 6 (IM 2.5 mg/kg) is shown. The two-compartment population PK model with fully unstructured random effects variance-covariance matrix was fitted to VRC07-523LS concentrations.

	Parameter	Units	Estimate	SE	%RSE
	Bioavailability for SC administration (F_{SC})	-	0.40	1.3e-03	0.32
	Bioavailability for IM administration (F_{IM})	-	0.57	0.03	4.67
	Absorption rate constant for SC administration (Ka_{SC})	1/day	0.30	0.01	4.92
	Absorption rate constant for IM administration (Ka_{IM})	1/day	0.39	0.02	4.04
	ELISA elimination clearance (CI)	L/day	0.11	3.1e-03	2.75
	Increase in elimination clearance from BAMA relative to ELISA (β_{CI})	L/day	0.04	1.2e-03	3.21
	ELISA central compartment volume (V1)	L	2.72	0.12	4.25
	Increase in central compartment volume from BAMA relative to ELISA (β_{V1})	L	0.46	0.03	6.04
	ELISA intercompartmental clearance (Q)	L/day	0.49	0.03	6.68
	Increase in intercompartmental clearance volume from BAMA relative to ELISA (β_Q)	L/day	0.69	0.04	6.08
	ELISA peripheral compartment volume (V2)	L	3.59	0.12	3.35
	Increase in peripheral compartment volume from BAMA relative to ELISA (β_{V2})	L	0.15	2.9e-03	1.93
	Standard deviation for random effect CI	-	0.28	0.02	6.83
	Standard deviation for random effect V1	-	0.33	0.03	9.72
	Standard deviation for random effect Q	-	0.54	0.05	9.95
	Standard deviation for random effect V2	-	0.23	0.03	11.08
	Correlation between Q and CI	-	0.15	0.12	82.95
	Correlation between V1 and CI	-	0.43	0.10	22.97
	Correlation between V2 and CI	-	1.00	0.02	1.84
	Correlation between V1 and Q	-	-0.33	0.13	38.27
	Correlation between V2 and Q	-	0.24	0.15	60.14
	Correlation between V2 and V1	-	0.39	0.14	36.54
	Error model (intercept)	-	0.19	0.02	9.65
	Error model (slope)	-	0.14	4.6e-03	3.21
	ELISA distribution half-life	day	1.17	0.13	10.72
	Increase in distribution half-life from BAMA relative to ELISA (β_{DHL})	day	3.44	0.03	0.92
	ELISA elimination half-life	day	42.43	0.75	1.77
	Increase in elimination half-life from BAMA relative to ELISA (β_{EHL})	day	0.24	2.2e-03	0.90

T1: IV 2.5 mg/kg VRC07-523LS

T2: IV 5 mg/kg VRC07-523LS

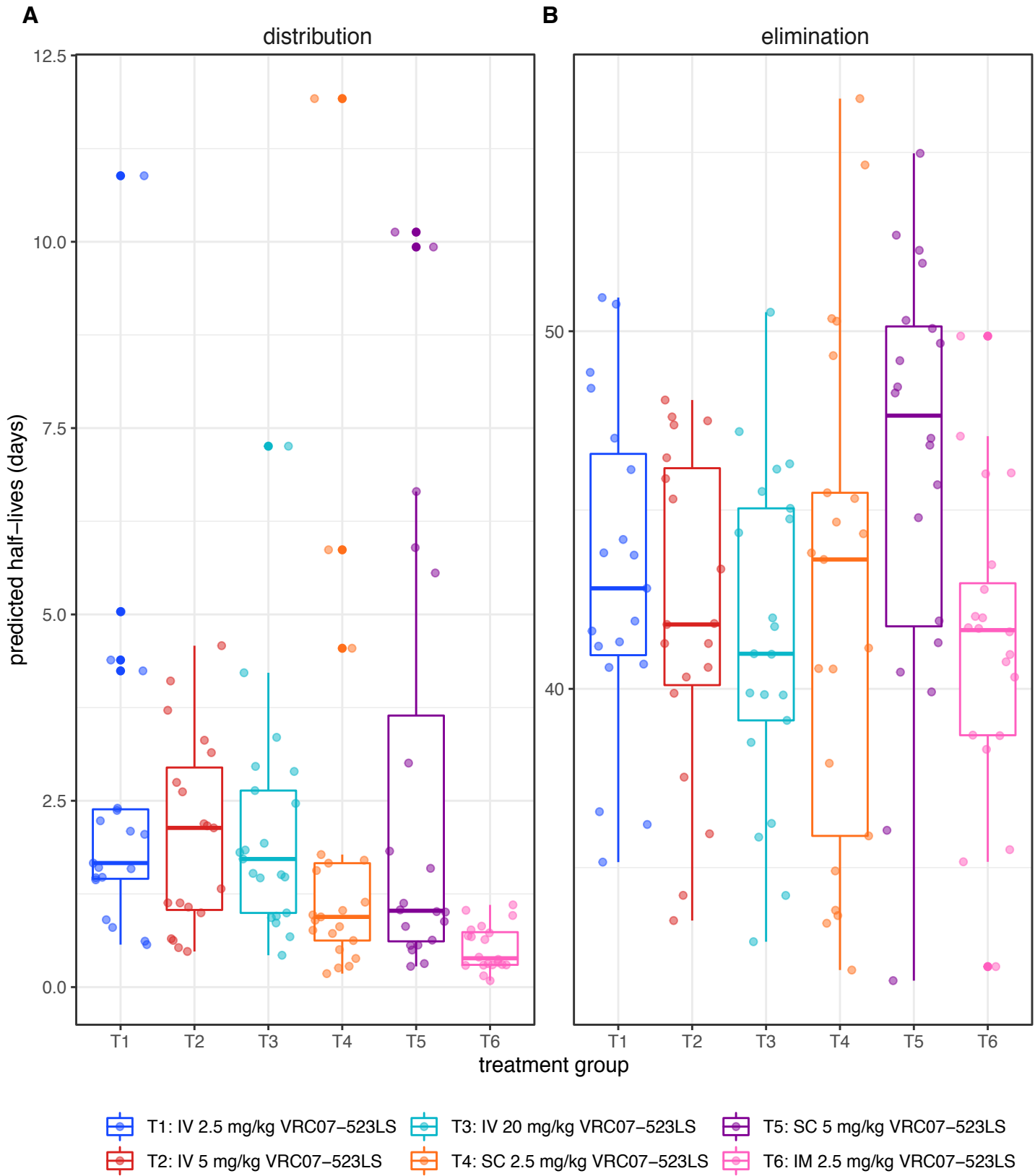
T3: IV 20 mg/kg VRC07-523LS

T4: SC 2.5 mg/kg VRC07-523LS

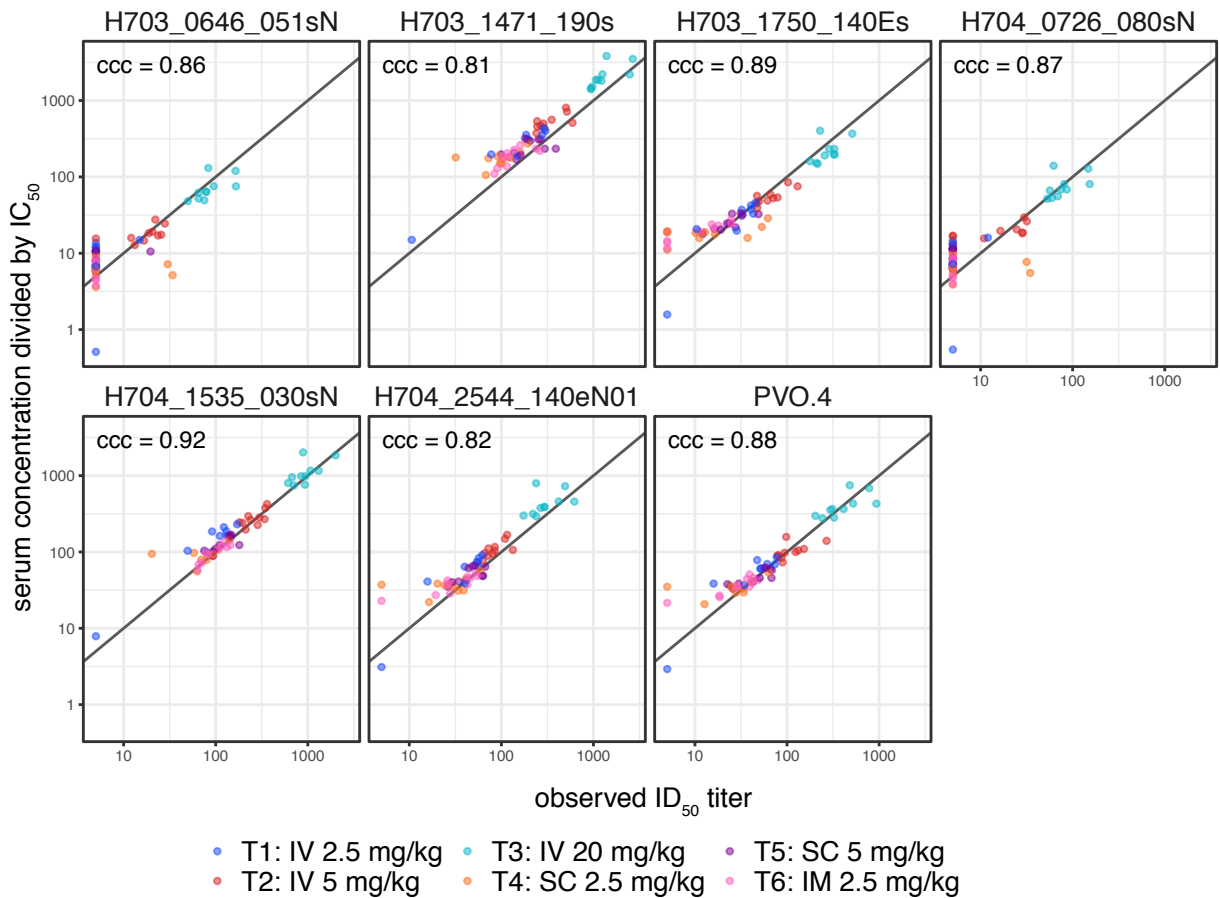
T5: SC 5 mg/kg VRC07-523LS

T6: IM 2.5 mg/kg VRC0-7523LS

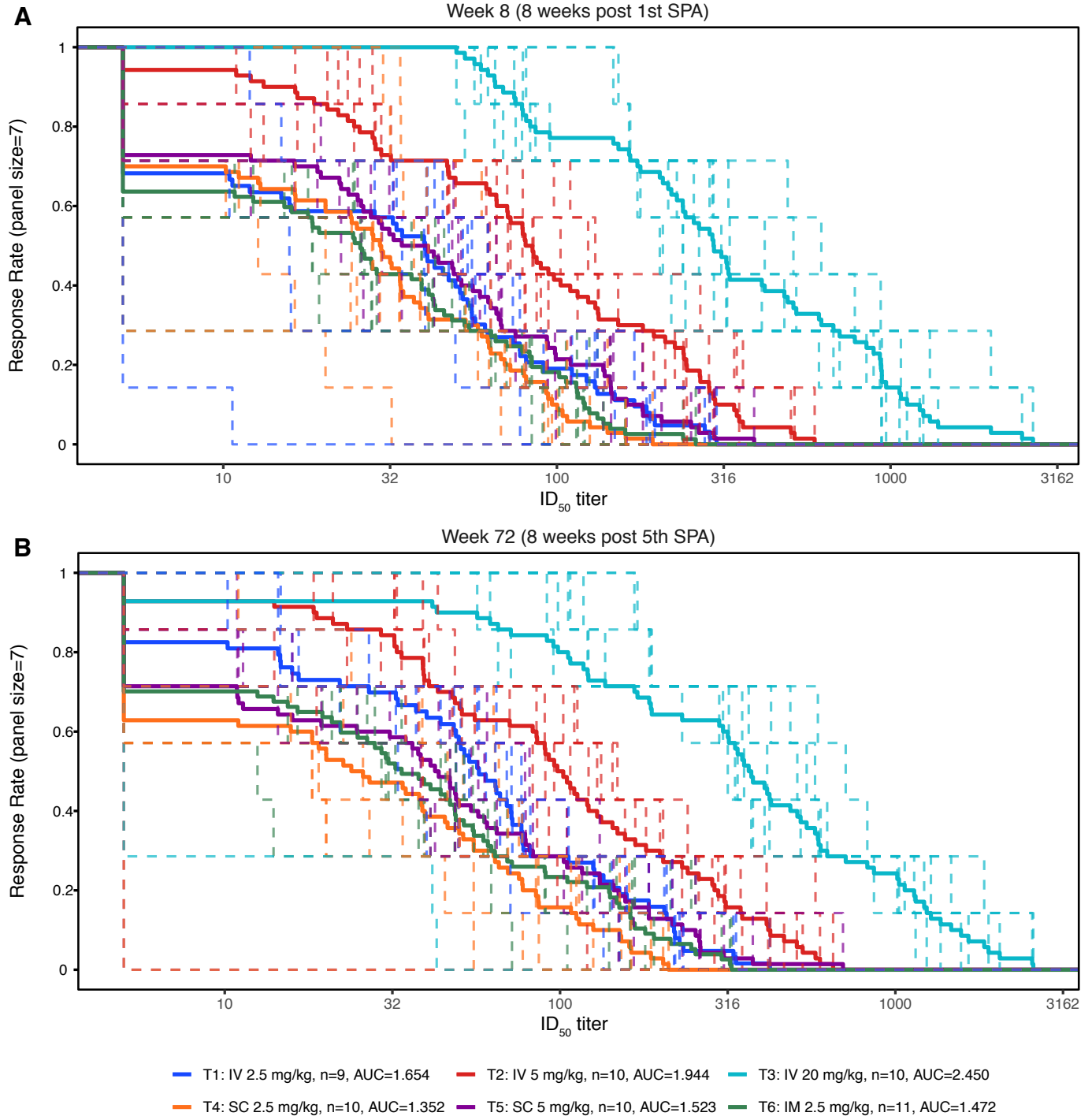
Supplemental Table 3: Parameter estimates based on the two-compartment population PK model fitted to VRC07-523LS serum concentrations in participants who received the study product via the IV (T1-T3), SC (T4, T5), or IM (T6) route. The model assumed a linearly combined error variance and a fully unstructured random effects variance-covariance matrix. SE: standard error; %RSE: relative SE, calculated as (SE/Estimate) × 100.



Supplemental Figure 5. Distribution (A) and elimination (B) half-life of VRC07-523LS. Values were predicted from the two-compartment model on a per-participant basis for each dose and route group. Box and whisker plots indicate the quartiles and X of the data set.



Supplemental Figure 6. Neutralization activity of participant serum 8 weeks following their first VRC07-523LS administration against seven HIV-1 isolates collected from incident HIV-1 acquisition events in placebo recipients in the AMP trials. ID_{50} titre is shown.



Supplemental Figure 7. Magnitude-breadth curves for participant serum following VRC07-523LS administration against a panel of HIV-1 isolates collected from incident HIV-1 acquisition events in placebo recipients in the AMP trials. ID_{50} titre is shown at Week 8 (**A**) and Week 72 (**B**) following first study product administration.