

1 Prevalence of Falciparum and non-Falciparum Malaria in the 2014-15 Rwanda Demographic Health  
2 Survey

3  
4  
5 Claudia Gaither<sup>1</sup>, Camille Morgan<sup>2</sup>, Rebecca Kirby<sup>3</sup>, Corine Karema<sup>4</sup>, Pierre Gashema<sup>5</sup>, Samuel J. White<sup>1</sup>,  
6 Hillary M. Topazian<sup>6</sup>, David Geibrecht<sup>3</sup>, Kyaw Thwai<sup>1</sup>, Koby Boyter<sup>1</sup>, Tharcisse Munyaneza<sup>7</sup>, Claude  
7 Mambo Muvunyi<sup>8</sup>, Jean De Dieu Butera<sup>7</sup>, Jeffrey A. Bailey<sup>3\*</sup>, Jean-Baptiste Mazarati<sup>4,5\*</sup>, Jonathan J.  
8 Juliano<sup>1,2,9,10\*#</sup>

9  
10 1: Institute for Global Health and Infectious Diseases, University of North Carolina, Chapel Hill, NC, USA

11 2: Department of Epidemiology, Gillings School of Global Public Health, University of North Carolina,  
12 Chapel Hill, NC, USA

13 3: Department of Pathology, Brown University, Providence, RI, USA

14 4: Quality Equity Health Care, Kigali, Rwanda

15 5: INES-Ruhengeri, Ruhengeri, Rwanda

16 6. MRC Centre for Global Infectious Disease Analysis, Imperial College London, London, UK

17 7: National Reference Laboratory, Rwanda Biomedical Center, Kigali, Rwanda

18 8: Rwanda Biomedical Centre, Kigali, Rwanda

19 9: Division of Infectious Diseases, School of Medicine, University of North Carolina, Chapel Hill, NC, USA

20 10: Curriculum in Genetics and Molecular Biology, School of Medicine, University of North Carolina,  
21 Chapel Hill, NC, USA

22  
23 \*: Co-senior authors

24 #: Corresponding author

25  
26 Key words: Plasmodium; falciparum; malaria; asymptomatic; non-falciparum; ovale; vivax; malariae

27  
28 Number of tables: 2

29  
30 Number of figures: 5

31  
32 Abstract: 200 words

33  
34 Manuscript: 3,451 words

35  
36 Short Title: Rwanda DHS

37 **Abstract**

38

39 **Background:** Malaria remains a major cause of morbidity in sub-Saharan Africa. Undetected  
40 asymptomatic falciparum malaria results in a large transmission reservoir and there is evidence of  
41 increasing non-falciparum malaria as malaria is controlled in Africa, both resulting in challenges for  
42 malaria control programs.

43

44 **Methods:** We performed quantitative real time PCR for 4 malaria species in 4,596 individuals from the  
45 2014-2015 Rwanda Demographic Health Survey. Bivariate models were used to determine species-  
46 specific associations with risk factors.

47

48 **Results:** Asymptomatic falciparum malaria, *P. ovale spp.*, and *P. malariae* infection had broad spatial  
49 distribution across Rwanda. *P. vivax* infection was rare. Overall infection prevalence was 23.6% (95%CI  
50 [21.7%, 26.0%]), with falciparum and non-falciparum at 17.6% [15.9%, 19.0%] and 8.3% [7.0%, 10.0%],  
51 respectively. Parasitemias tended to be low and mixed species infections were common, especially  
52 where malaria transmission was the highest. Falciparum infection was associated with socio-economic  
53 status, rural residence and low altitude. Few risk factors were associated with non-falciparum malaria.

54

55 **Conclusions:** Asymptomatic falciparum malaria and non-falciparum malaria are common and widely  
56 distributed across Rwanda. Continued molecular monitoring of *Plasmodium spp.* is needed to monitor  
57 these threats to malaria control in Africa.

58

## 59 Introduction

60 Malaria remains a major global health challenge, with 249 million malaria cases in 85 malaria endemic  
61 countries in 2022. This was an increase from 233 million in 2021, with most of this increase coming from  
62 countries in the WHO African Region.[1] Malaria infection is caused by five species in the *Plasmodium*  
63 genus, with most cases and morbidity attributed to *Plasmodium falciparum*. Diagnosis of malaria in  
64 Africa relies principally on rapid diagnostic tests (RDTs). RDTs primarily detect the antigen *P. falciparum*  
65 histidine rich protein 2 (HRP2), specific to falciparum malaria, often with a second less sensitive band for  
66 pan-species lactate dehydrogenase (LDH).[2] Unfortunately, these tests often miss low density  
67 falciparum infection and species other than falciparum malaria, leading to a reservoir of asymptomatic  
68 and non-falciparum malaria which contribute to continued transmission.

69  
70 Molecular detection, including real time PCR, can detect lower levels of parasitemia than RDTs, which  
71 increases the number of falciparum malaria infections detected, particularly among asymptomatic  
72 community surveys.[3] Characterization of asymptomatic infections is vitally important. These infections  
73 are major reservoir of infection, contributing to the persistence of malaria.[4] It has also been argued  
74 that these infections have significant associated morbidity.[5] Additionally, asymptomatic malaria often  
75 is often followed by symptomatic infection.[6] Thus, characterizing the distribution of asymptomatic  
76 malaria is important for malaria control and prevention.

77  
78 Molecular detection can also help us better understand the distribution of non-falciparum malaria, *P.*  
79 *malariae*, *P. ovale curtisii*, *P. ovale walkieri*, and *P. vivax*. Non-falciparum malaria species will complicate  
80 the challenge of malaria elimination in Africa. There is growing evidence that *P. ovale spp.* and *P.*  
81 *malariae* malaria become more common in Africa as *P. falciparum* is controlled and prevalence  
82 decreases.[7] In addition, *P. vivax* is being reported more frequently due to wider implementation of  
83 molecular diagnostics.[8–10] In contrast with falciparum infection, vivax and ovale contribute to malaria  
84 by causing relapse through the persistence of hypnozoites (dormant liver stage parasites).[11]  
85 Hypnozoites do not respond to blood-stage treatment, like artemisinin-combination therapies (ACTs),  
86 the primary treatment for severe malaria in most countries, and require radical cure. Thus, their  
87 presence may require national malaria control programs to alter therapeutic options in the country.

88  
89 Rwanda has historically had strong malaria control, leveraging effective antimalarials, insecticide treated  
90 bed nets, and indoor residual spraying.[12] However, malaria cases in Rwanda increased from 48 cases  
91 per 1,000 in 2012 to 403 per 1,000 in 2016, while mortality increased 41% over the same time.[13]  
92 Emerging insecticide resistance, an increase in irrigated agriculture, and insufficient insecticide-treated  
93 mosquito net coverage, among other factors, have been attributed to these increases.[13] Malaria  
94 transmission in Rwanda is a constant occurrence, with peaks from April to May and November to  
95 December.[12] Transmission also varies with the geography of the country; northern and western  
96 Rwanda are prone to epidemics, while the south and east are considered endemic areas of stable  
97 transmission.[14] Areas of lower transmission (endemic areas) may have more instances of  
98 asymptomatic infection, which may result in under-reporting and lower prevalence estimates in these  
99 areas.

100

101 While transmission is variable across the country, the entire population of Rwanda is considered at risk  
102 for malaria.[15] In order to have a better picture of national malaria trends, large population based  
103 surveys are needed. Demographic Health Survey (DHS) studies in multiple countries have been used to  
104 understand the distribution of both falciparum and non-falciparum malaria by using molecular testing of  
105 malaria from residual blood spots collected for HIV testing.[9,16–18] Given there is currently limited  
106 data on non-falciparum malaria in Rwanda, and a need for better understanding of falciparum infections  
107 among asymptomatic individuals, leveraging DHS samples would provide a more robust picture of  
108 malaria in the country.

109  
110 The 2014-15 Rwanda DHS occurred during the beginning of increased malaria rates in Rwanda and  
111 reported a 2% malaria prevalence among children age 6-59 months and 0.6% among women age 15-49,  
112 based primarily on microscopy.[19] Previous studies used this data to show that malaria was associated  
113 with lower socio-economic status, not using an insecticide treated bed net, and residing at lower  
114 altitude.[20,21] However, given the reliance on non-molecular diagnostics, these results likely do not  
115 reflect the full burden of malaria. For example, a study of school children in Huye District, that also  
116 occurred in 2014, showed a 22% prevalence of any malaria (19% *P. falciparum* prevalence) using a  
117 combined microscopy and PCR diagnostic.[22]

118  
119 Data concerning non-falciparum malaria in Rwanda is sparse. A recent household survey estimated that  
120 *P. falciparum* is responsible for 97% of malaria infections in Rwanda, with *P. malariae* and *P. ovale spp.*  
121 each responsible for 1%–2% of total infections [16]. Reports of vivax malaria in Rwanda are few; a single  
122 case of *P. vivax* infection (previously misclassified as falciparum infection) was reported in 2018. [23]  
123 More recently, a cluster of *P. vivax* was reported in the Huye District. [24] An accurate estimate of  
124 malaria prevalence in Rwanda requires the use of molecular diagnostics in a nationally representative  
125 survey.

126  
127 This paper presents data on the spatial distribution of asymptomatic falciparum and non-falciparum  
128 infection in Rwanda from the 2014-15 Rwanda DHS, determined by quantitative real time PCR. We also  
129 identified attributes associated with different species to inform targeted interventions. The results  
130 provide a broader understanding of the distribution of all malaria species at that time, illuminating the  
131 role of non-falciparum malaria in the country and providing a baseline for further comparisons in future  
132 surveys.

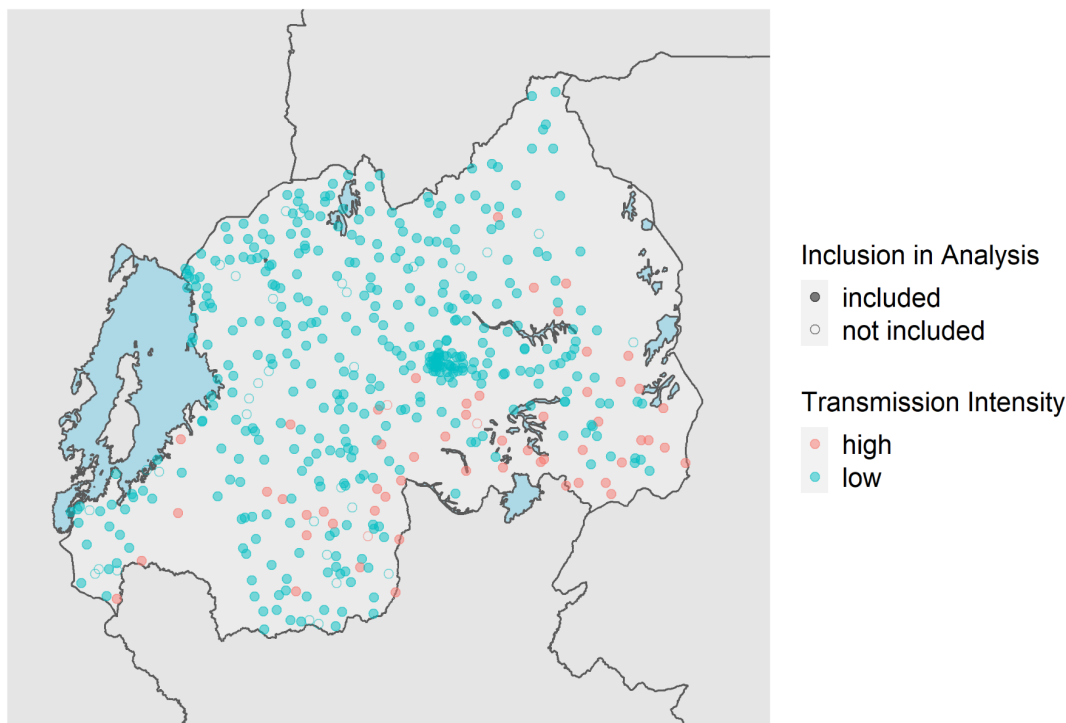
133

134 **Methods**

135 *Study design and population*

136 The 2014-2015 Rwanda DHS studied 12,699 households from 492 GPS-located clusters from all 30  
137 recognized districts. In 50% of households, dried blood spot (DBS) specimens were collected for HIV  
138 testing from men aged 15-59 years and women aged 15-49 years, and a subsample of children 0-14  
139 years; in the other 50% of households, rapid malaria diagnostic testing was completed on children aged  
140 6-59 months.[25] Previously, we used these data to estimate clusters that would represent high and low  
141 malaria transmission areas.[26] High prevalence clusters had a RDT or microscopy positivity rate of  
142 >15%. We included 1,434 samples from these 55 high prevalence clusters in 3 regions. In addition to  
143 samples from high prevalence areas, a random subset of 3,161 samples from 402 low prevalence  
144 clusters were selected. A total of 4,595 samples from 457 out of 492 DHS clusters were analyzed for four  
145 species of malaria infection by real time PCR. (**Figure 1**).

146



147 **Figure 1. Distribution of 2014-2015 Rwanda Demographic Health Survey Clusters.** Clusters are color coded based upon malaria  
148 transmission intensity based on DHS malaria testing results (high represents >15% positive by RDT or microscopy). Shape fill is  
149 based on the cluster's inclusion in this analysis.  
150

151

152

153 *Species-specific real time PCR*

154 DNA from each sample was extracted from three 6 mm DBS punches using Chelex and screened for four  
155 species of malaria infection using real-time PCR assays.[27] These assays (**Supplementary Table 1**)  
156 targeted the 18s genes for *P. malariae*, *P. ovale*, and *P. vivax*, and the varATS repeat in *P.*  
157 *falciparum*. [9,17,28,29] To allow for quantification of falciparum, mock DBS were created using whole  
158 blood and cultured 3d7 parasites (MRA-102, BEI Resources, Manassas, VA) and extracted with the same

159 assay used for samples. Controls for non-falciparum species used serial dilutions of plasmid DNA (MRA-  
160 180, MRA-179, MRA-178; BEI Resources, Manassas VA), with estimates for parasitemia based on an  
161 estimated six 18s rRNA gene copies per parasite.[30] All assays were run for 45 cycles to enable  
162 detection of lower density infections. The high cycle number approach has been previously evaluated  
163 for *P. ovale* and *P. vivax*, where assays were tested against 390 negative controls (human DNA) with no  
164 false positives.[16] We had no false positive results in our non-template controls for this study. All  
165 positive samples were confirmed by manually reviewing the amplification curves in the machine  
166 software. Standard curves had a minimum r-squared value of 0.95 across all runs. A positive result for  
167 each species was determined using a 45-cycle cutoff, unless otherwise stated.

168

#### 169 *Spatial & ecological variables*

170 Deidentified survey and geospatial data from the 2014-2015 Rwanda DHS were matched to PCR data  
171 using DBS sample barcodes. Clusters with individuals positive for any species of malaria infection were  
172 mapped using DHS geospatial coordinates. Individual level covariates assessed for association included  
173 sex, age group, wealth quintile, education level, livestock ownership, source of drinking water, bed net  
174 ownership, whether the household bed net has been treated with long-lasting insecticide (LLIN = long-  
175 lasting insecticide-treated net) and sleeping under a LLIN the night prior to the survey. Cluster level  
176 covariates included region, urban/rural status of place of residence, elevation, month of data collection,  
177 proportion of a given cluster living in a household with a bed net, proportion of the cluster that slept  
178 under an LLIN, land cover, average daily maximum temperature for the current month and precipitation  
179 for the prior month. Land cover estimates were taken from the Regional Center for Mapping Resources  
180 for Development and SERVIR-Eastern and Southern Africa and temperature and precipitation values  
181 were obtained from the Climate Hazards Center at the University of California, Santa Barbara.[31,32]  
182 Survey clusters were assigned GPS coordinate values within buffers as described previously in  
183 accordance with DHS specifications.[16,33]

184

#### 185 *Statistical analysis*

186 We estimated species-specific prevalence, non-falciparum prevalence, and overall *Plasmodium sp.*  
187 prevalence, applying HIV sampling weights, inverse propensity for selection weights, and weights to  
188 account for selection by cluster transmission intensity and the skewed selection of samples from low  
189 and high transmission clusters. [34,35] We estimated bivariate associations between each *Plasmodium*  
190 species and a variety of covariates available in the DHS and investigated in other contexts,[16,36] using  
191 the same combination of weights. We report prevalence differences and 95% confidence intervals to  
192 assess precision. We analyzed data using the *survey* (4.2.1), *srvyr* (v1.2.0), and *sf* (v1.0-8) packages using  
193 R 4.2.1 (R Foundation for Statistical Computing). Shapefiles of Rwanda district boundaries taken from  
194 the OCHA Regional Office for Southern and Eastern Africa database.[37]

195

196

197 **Results**

198 *Study population characteristics*

199 The study population was 40% female, 14% aged 15-24 years, 76% lived in rural areas, and 80% had a  
200 primary school education or no education (60% reported primary education, 20% reported  
201 preschool/none). Overall, most (83%) individuals reported a household bed net and 68% reported  
202 sleeping under a long-lasting insecticide treated net the night before the survey. However, 41% of the  
203 study population lived in a household that did not meet the World Health organization's criteria of at  
204 least 1 net per 1.8 household members.

205 **Table 1. Study Population Characteristics and Distribution of PCR Positives by Species.** Weighted counts and percentages for all individuals positive for each species of malaria.  
 206 Weights applied are DHS sampling weights, propensity score weights, and weights to correct for over-selection of high transmission intensity clusters (transmission intensity  
 207 weights). Characteristics of the included study population are also shown.

		Pf positive		Pm positive		Po positive		Pv positive		Included study population	
<i>Unweighted counts</i>		1231		168		246		7		4595	
<i>Weighted counts</i>		813		152		237		7.5		4616	
<b>Individual level covariates</b>											
		n	%	n	%	n	%	n	%	n	%
Sex of respondent	Male	453.4	56%	89.0	59%	128.1	54%	6.0	80%	2755.4	60%
	Female	359.5	44%	62.9	41%	108.8	46%	1.5	20%	1860.6	40%
Age group (years)	0-15	24.9	3%	1.5	1%	29.5	12%	0.0	0%	121.4	3%
	15-24	114.4	14%	14.2	9%	3.0	1%	0.8	11%	657.8	14%
	25-34	234.3	29%	43.2	28%	42.8	18%	2.8	37%	1450.1	31%
	35-44	167.3	21%	34.6	23%	72.8	31%	0.0	0%	929.9	20%
	45-54	150.3	16%	42.4	24%	50.3	20%	2.4	32%	842.5	18%
	55+	121.5	15%	16.1	11%	38.5	16%	1.5	20%	614.4	13%
Wealth Quintile	Poorest	200.3	25%	24.1	0.16	36.7	16%	2.4	33%	694.4	15%
	Poorer	163.4	20%	32.4	0.21	34.3	14%	0.3	4%	820.4	18%
	Middle	161.4	20%	29.5	0.19	34.8	15%	0.0	0%	828.3	18%
	Richer	166.7	21%	35.8	0.24	53.0	22%	4.7	63%	1027.5	22%
	Richest	121.0	15%	30.1	0.20	78.0	33%	0.0	0%	1245.5	27%
Education	None/preschool	190.0	23%	39.0	26%	40.1	17%	5.1	68%	907.2	20%
	Primary	520.7	64%	92.4	61%	140.4	59%	2.4	32%	2779.0	60%
	Secondary	72.5	9%	11.6	8%	45.2	19%	0.0	0%	723.7	16%
	Higher	29.5	4%	8.9	6%	11.2	5%	0.0	0%	205.1	4%
Owns livestock, herds, or farm animals	No	354.3	44%	71.7	47%	102.6	43%	4.8	64%	2067.7	45%
	Yes	458.6	56%	80.2	53%	134.3	57%	2.7	36%	2548.3	55%
Source of drinking water	Unpiped	756.6	93%	138.5	91%	193.1	82%	7.5	100%	3911.7	85%



	Piped	55.3	7%	13.4	9%	43.8	18%	0.0	0%	701.8	15%
Household bed net	No	134.6	17%	31.9	21%	36.5	15%	3.3	44%	797.7	17%
	Yes	678.3	83%	120.0	79%	200.4	85%	4.2	56%	3818.3	83%
Slept under LLIN last night	No	257.2	32%	59.1	39%	63.5	27%	3.3	44%	1457.8	32%
	Yes	555.6	68%	92.8	61%	173.4	73%	4.2	56%	3158.2	68%
Insecticide-treated household net	No	0.9	0%	0.0	0%	2.6	1%	0.0	0%	6.7	0%
	Yes	616.7	76%	115.8	76%	180.4	76%	4.2	56%	3527.0	76%
	Missing data	195.2	24%	36.1	24%	53.9	23%	3.3	44%	1082.3	23%
1 bed net per 1.8 household members	No	291.2	36%	61.0	41%	101.8	43%	3.3	44%	1905.0	41%
	Yes	520.9	64%	88.6	59%	135.1	57%	4.2	56%	2699.2	59%

**Cluster level covariates**

Region	Kigali City	70.5	9%	14.3	9%	33.2	14%	1.2	16%	699.4	15%
	South	332.8	41%	32.5	21%	75.5	32%	1.2	16%	1176.2	25%
	West	74.7	9%	37.9	25%	33.2	14%	3.0	40%	1026.3	22%
	North	42.3	5%	29.4	19%	19.1	8%	0.0	0%	776.0	17%
	East	292.6	36%	37.9	25%	75.9	32%	2.1	28%	938.1	20%
Place of residence	Urban	95.9	12%	29.3	19%	55.9	24%	1.2	16%	1096.0	24%
	Rural	717.0	88%	122.6	81%	181.0	76%	6.3	84%	3520.0	76%
Elevation (m)	500 - 1000	3.3	0%	0.8	1%	0.0	0%	0.0	0%	15.4	0%
2	1001 - 1500	352.2	43%	47.8	31%	77.3	33%	3.3	44%	1263.3	27%
3	1501 - 2000	412.8	51%	67.2	44%	121.0	51%	1.2	16%	2449.8	53%
4	2000 - 2500	41.2	5%	34.3	23%	38.6	16%	1.5	20%	821.5	18%
5	> 2500	3.3	0%	1.9	1%	0.0	0%	1.5	20%	66.0	1%
Month of data collection	Jan-15	164.0	20%	28.3	19%	42.8	18%	0.0	0%	1066.8	23%
	Feb-15	186.1	23%	26.3	17%	38.8	16%	2.0	27%	780.0	17%
	Mar-15	228.2	28%	39.5	26%	76.0	32%	2.7	37%	1100.1	24%
	Apr-15	5.5	1%	1.3	1%	1.5	1%	0.0	0%	32.3	1%
	Nov-14	95.7	9%	21.0	11%	16.9	6%	1.2	12%	456.8	8%
	Dec-14	133.4	16%	35.5	23%	60.9	26%	1.5	20%	1180.0	26%
Landcover	Moderate forest	5.8	0.01	6.4	4%	13.3	6%	0.0	0%	304.2	7%

Sparse forest	239.6	0.29	2.3	2%	0.3	0%	0.0	0%	27.7	1%
Woodland	508.5	0.63	33.9	22%	59.2	25%	1.3	17%	774.8	17%
Closed grassland	33.7	0.04	100.4	66%	149.2	63%	6.2	83%	3099.2	67%
(Perennial) cropland	25.1	0.03	8.9	6%	15.0	6%	0.0	0%	410.1	9%

**Cluster level averages**

	<b>Pf positive</b>		<b>Pm positive</b>		<b>Po positive</b>		<b>Pv positive</b>		<b>overall study</b>	
	<i>mean</i>	<i>SE</i>	<i>mean</i>	<i>SE</i>	<i>mean</i>	<i>SE</i>	<i>mean</i>	<i>SE</i>	<i>mean</i>	<i>SE</i>
Proportion of cluster with household bed nets	0.853	0.011	0.787	0.023	0.855	0.018	0.680	0.073	0.827	0.008
Proportion of cluster that slept under a net last night	0.697	0.014	0.631	0.027	0.741	0.024	0.560	0.064	0.684	0.010
Current month's average daily max temp (degrees C)	27.16	0.1	26.40	0.2	26.84	0.2	25.96	1.0	26.39	0.05
Prior month's precipitation (mm)	80.60	2.4	91.05	4.2	86.02	4.7	94.51	21.1	90.38	1.38

208

209 *Prevalence of falciparum and non-falciparum infection by real time PCR*

210 A total of 1,231 *P. falciparum*, 246 *P. ovale*, 168 *P. malariae* and 7 *P. vivax* infections were identified. The  
 211 overall weighted prevalence of any non-falciparum malaria infection was 8.3% (95% CI: [7.0%, 10.0%])  
 212 compared to 17.6% [15.9%, 19.0%] for falciparum and 23.6% [21.7%, 26.0%] overall malaria prevalence  
 213 with HIV sampling, inverse propensity of selection, and transmission intensity correction weights  
 214 applied. Species specific weighted prevalences were 3.3% [2.7%, 4.0%] and 5.1% [4.0%, 7.0%] for *P.*  
 215 *malariae* and *P. ovale spp.* Unweighted prevalence for *P. vivax* was 0.15%, with a manually calculated  
 216 95% CI [0.04%, 0.27%]. Using a more restrictive cut off of 40 cycles (requiring a higher parasitemia to be  
 217 positive at approximately 1 parasite per microliter of template DNA), resulted in weighted overall  
 218 prevalences of 4.3% [3.6%, 5.0%] for any non-falciparum malaria infection, compared to 14.3% [12.7%,  
 219 16.0%] for falciparum and 17.4% for [15.8%, 19.0%] overall malaria. Species specific weighted  
 220 prevalences at this cut off were 2.7% [2.2%, 3.0%] and 1.7% [1.2%, 2.0%], and for *P. malariae*, and *P.*  
 221 *ovale spp.* Unweighted prevalence for *P. vivax* was 0.09% [0.002%, 0.17%]. The largest difference in  
 222 estimated prevalence was for *P. ovale spp.* This is not surprising given the distribution of estimated  
 223 parasitemia values (**Figure 2**), showing a lower median parasitemia in the non-falciparum species  
 224 compared to falciparum malaria. District level weighted prevalences and their differences by PCR cut off  
 225 are shown in **Table 2** and **Supplemental Table 3**. Falciparum, ovale and malariae infections were  
 226 distributed across the country, while vivax infections were more localized (**Supplemental Figure 1**).  
 227 District level overall malaria prevalence is shown in **Figure 3**, while district level prevalences for each  
 228 species are illustrated in **Figure 4**. Among *P. ovale spp.*, *P. malariae*, and *P. vivax* infections, 45%, 45%  
 229 and 57% (unweighted counts) were infected with at least one other species of malaria (**Supplemental**  
 230 **Table 4**).

231

232 **Table 2. Differences in District Level Prevalence by PCR Cutoff.** The difference in prevalence for malaria for each district  
 233 between the 45 and 40 PCR cycle threshold is shown for overall malaria burden, as well as for each species. Darker shading  
 234 denotes larger differences in prevalence estimates, and districts are ordered by the difference in overall malaria prevalence  
 235 from highest to lowest difference in prevalence. Specific prevalence estimates are shown in **Supplemental Table 3**.

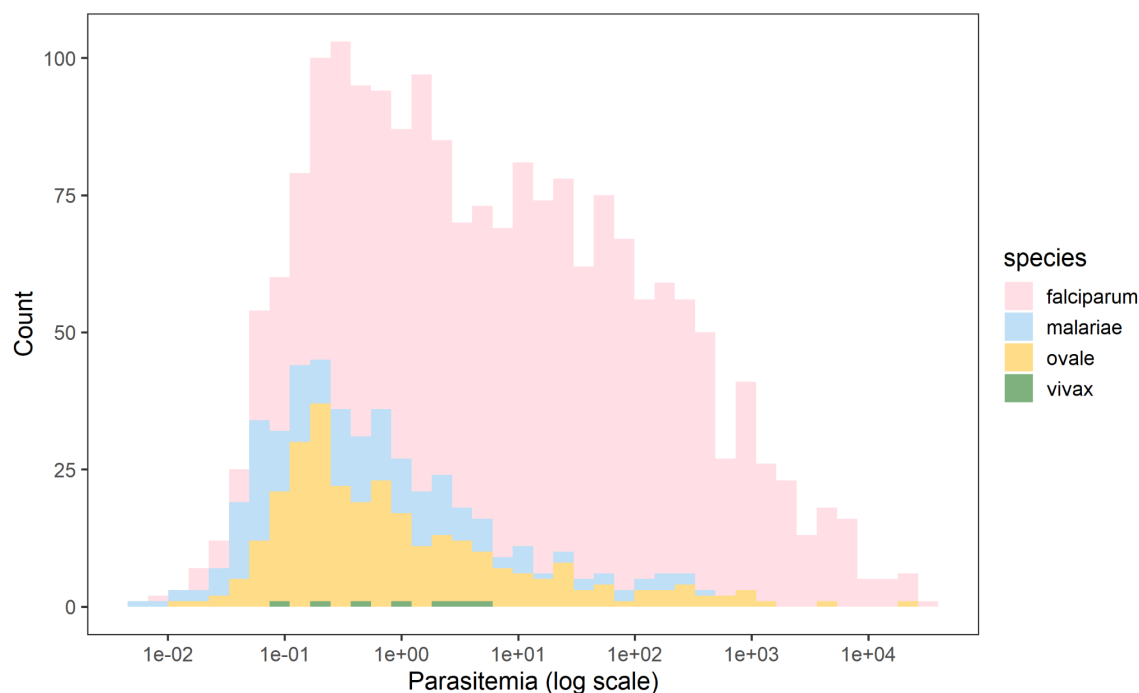
236

<i>District</i>	<i>Difference in overall malaria prevalence</i>	<i>Difference in Pf prevalence</i>	<i>Difference in Pm prevalence</i>	<i>Difference in Po prevalence</i>	<i>Difference in Pv prevalence</i>
Nyarugenge	0.128	0.039	0.027	0.063	0.000
Gatsibo	0.120	0.047	0.000	0.112	0.000
Ngoma	0.102	0.054	0.002	0.091	0.002
Burera	0.090	0.037	0.018	0.034	0.000
Huye	0.089	0.073	0.002	0.033	0.000
Rwamagana	0.088	0.052	0.015	0.071	0.000
Kirehe	0.084	0.052	0.003	0.046	0.000
Gasabo	0.080	0.037	0.000	0.043	0.000
Nyamagabe	0.074	0.053	0.000	0.036	0.000
Rubavu	0.068	0.029	0.000	0.040	0.000
Kamonyi	0.063	0.024	0.007	0.047	0.000

Nyaruguru	0.063	0.049	0.000	0.039	0.000
Kayonza	0.061	0.048	0.000	0.020	0.000
Karongi	0.061	0.002	0.000	0.061	0.000
Gakenke	0.061	0.027	0.034	0.000	0.000
Gicumbi	0.060	0.017	0.009	0.033	0.000
Ruhango	0.059	0.030	0.021	0.038	0.000
Gisagara	0.058	0.052	0.003	0.068	0.000
Nyabihu	0.057	0.022	0.007	0.018	0.010
Muhanga	0.046	0.023	0.000	0.023	0.000
Nyamasheke	0.043	0.043	0.000	0.000	0.000
Nyanza	0.043	0.041	0.006	0.020	0.000
Nyagatare	0.041	0.041	0.000	0.018	0.000
Kicukiro	0.040	0.026	0.000	0.021	0.000
Musanze	0.036	0.022	0.006	0.008	0.000
Rutsiro	0.035	0.045	0.000	0.000	0.015
Bugesera	0.034	0.014	0.002	0.025	0.008
Ngororero	0.021	0.010	0.010	0.010	0.000
Rusizi	0.018	0.010	0.008	0.000	0.000
Rulindo	0.015	0.008	0.000	0.007	0.000

237  
238  
239  
240  
241

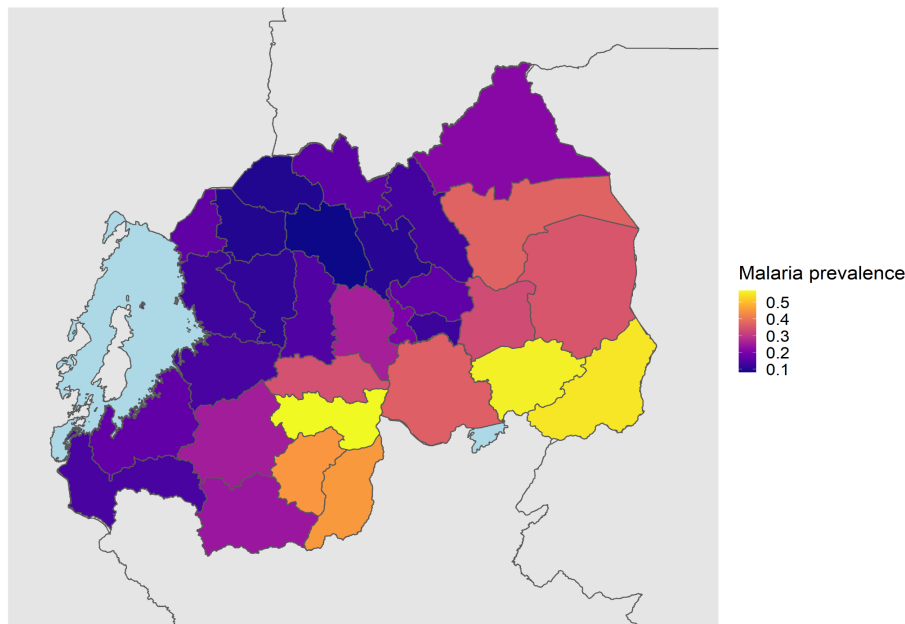
**Figure 2. Calculated Parasitemia Estimates for Falciparum and Non-falciparum Infections.** Overall, falciparum had a higher parasite density with a median of 10.90 (IQR 0.96-101.41). The median parasitemia level for *P. malariae*, *P. ovale spp.*, and *P. vivax malaria* were 0.35 (IQR: 0.07-1.83), 0.48 (IQR: 0.16-3.25) and 0.94 (IQR: 0.20-3.44), respectively.



242

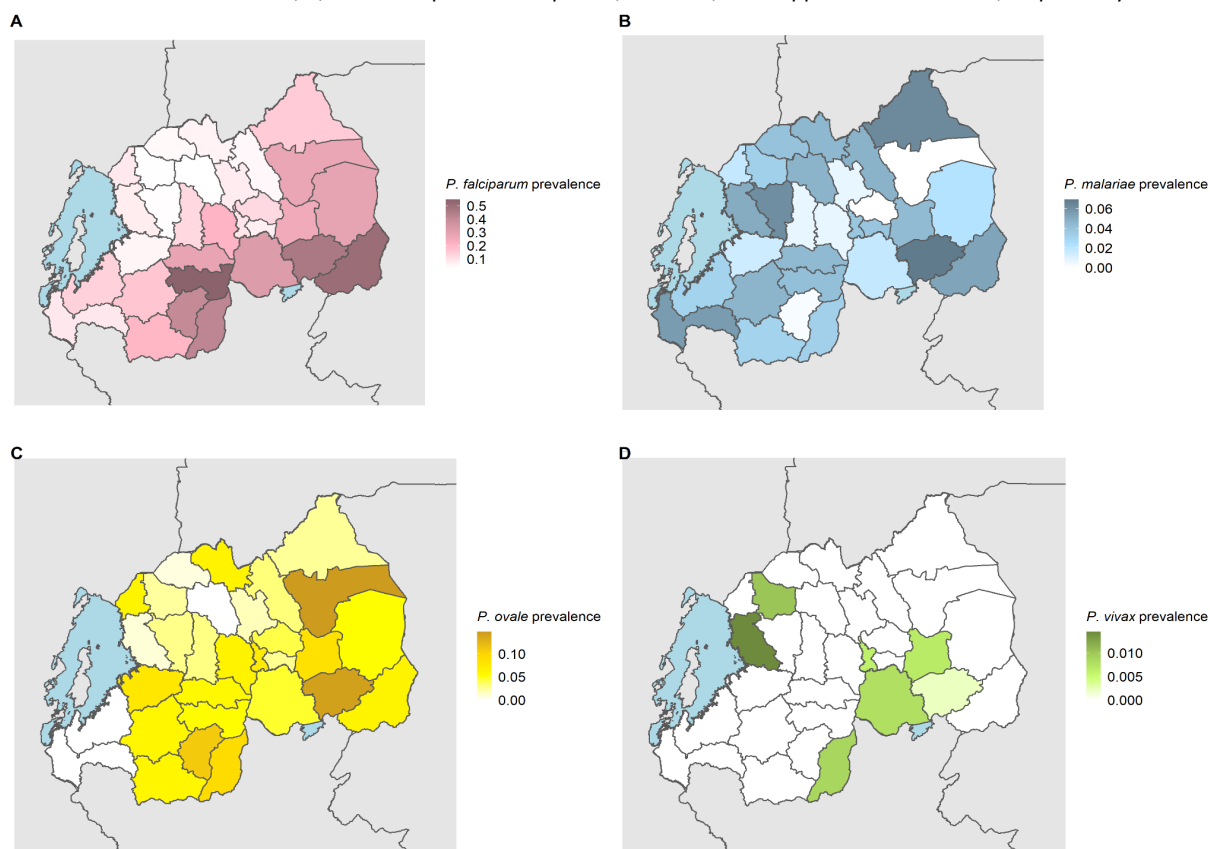
243  
244  
245

**Figure 3. District Level Weighted Overall Malaria Prevalence.** Weighted prevalence of any malaria infection, using HIV sampling, inverse propensity for selection and transmission intensity weights (described above).



246  
247  
248  
249

**Figure 4. District Level Weighted Prevalence Estimates for Malaria Species.** The weighted prevalence estimate for each species is shown. Panel A, B, C and D represent falciparum, malariae, ovale spp. and vivax malaria, respectively.

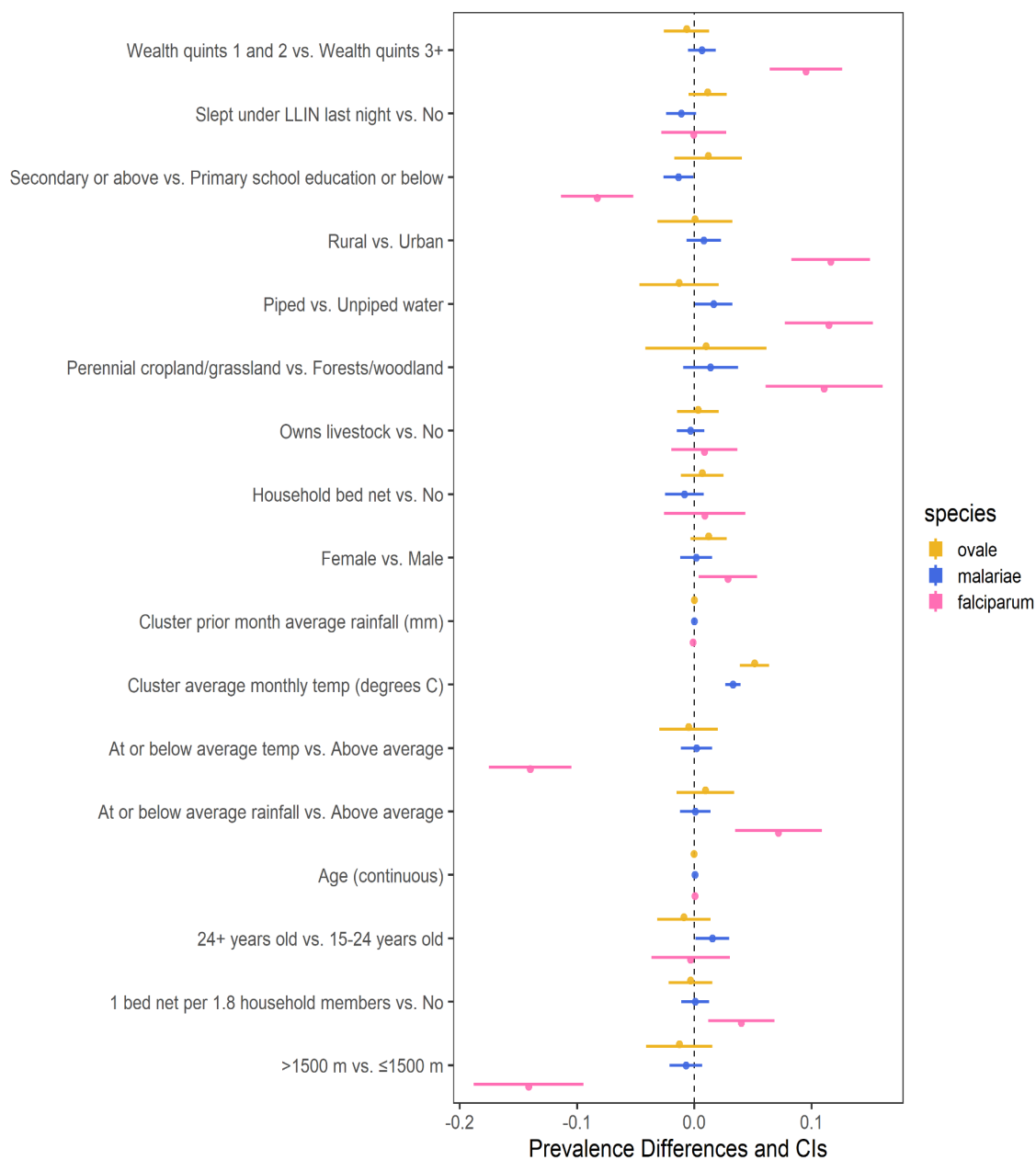


250

251  
252 *Bivariate associations for infection*  
253 Bivariate regression models using weighted (as previously described) survey data found multiple  
254 associations for infection with falciparum malaria, but few for non-falciparum malaria (**Figure 5**). Similar  
255 to previous work, a higher prevalence of falciparum malaria in our dataset was significantly (at a 0.05  
256 confidence level for all associations) associated with multiple study covariates related to socioeconomic  
257 status (e.g. lower wealth quintile, lower education status, and unpiped water). Secondary or higher  
258 education, access to piped drinking water, and higher altitude (>1,500m) were all associated with  
259 significantly lower prevalence of falciparum malaria. Clusters designated as perennial cropland, rural  
260 clusters compared to urban, lower wealth index (first and second quintiles compared to the upper  
261 three), and female participants were associated with higher falciparum prevalence. Few associations  
262 were found for non-falciparum malaria. Lower prevalence of *P. malariae* infection was significantly  
263 associated with piped water and secondary education, and both a 1-year increase in age and  
264 participants over 24 (compared to those 15-24 years old) were associated with higher *P. malariae*  
265 prevalence. No significant associations were found for *P. ovale* infection. Associations for *P. vivax*  
266 infection were not attempted due to the limited number of infections in the survey (n=7).  
267

268

269 **Figure 5. Bivariate associations and between demographic and environmental risk factors and *Plasmodium* spp. prevalence**  
270 **using weighted survey data.** Models incorporate 2014-15 Rwanda Demographic and Health Survey weights, inverse probability  
271 of selection weights, and cluster transmission intensity weights (described in **Table 1**). Point estimates of prevalence difference  
272 are surrounded by confidence intervals. The reference is the second variable listed.  
273



274

275

## 276 Discussion

277 Information on the prevalence and distribution of asymptomatic falciparum malaria and non-falciparum  
278 malaria in Rwanda is essentially absent in the literature. We report the largest survey for non-falciparum  
279 malaria and asymptomatic falciparum malaria infection using molecular methods to have been  
280 conducted in Rwanda by leveraging the 2014-15 DHS. Given the DHS represents individuals taking  
281 surveys at home, it primarily reflects asymptomatic infections with low parasite density (**Figure 2**).  
282 Overall, malaria was much more common than expected based on RDT and microscopy data in the DHS,  
283 reaching 23.6% nationally. As expected, overall malaria was higher in the South and East than the North  
284 and West (**Figure 3**). Asymptomatic falciparum prevalence was 17.6% nationally. The rates of malaria  
285 infection were highest in the South and East as expected, but asymptomatic infection remained  
286 common in other areas (**Figure 4**). Non-falciparum malaria was detected in 8.3% of individuals  
287 nationally, a prevalence not previously appreciated in the country. *P. ovale spp.* and *P. malariae* were  
288 both common in Rwanda (5.1% and 3.3% prevalence, respectively) and distributed in regions of both  
289 high and low transmission (**Figure 4**). *P. vivax* is present but remains relatively uncommon (0.15%  
290 unweighted prevalence) and sporadic (**Figure 4**). Asymptomatic falciparum malaria has been shown to  
291 increase risk of symptomatic disease in the future (at one month) and significant morbidity has been  
292 associated with malaria parasite carriage.[5,6] The impact of low density, asymptomatic, non-falciparum  
293 malaria infection on clinical disease and future symptomatic disease remains unclear and requires  
294 further study. In addition, the higher than expected prevalence of *P. ovale spp.* and occasional *P. vivax*  
295 infection raises control concerns around the use of radical cure for relapse to reach malaria elimination.  
296

297 Molecular diagnostics for malaria have higher sensitivity and detect lower density infections than RDTs  
298 or microscopy. However, there is increased concern about false positive detection with higher cycle cut  
299 offs in quantitative real time PCR. Our assays have been run extensively at 45 cycles with little to no  
300 evidence of false positives[16], but we also present prevalences with a lower cut off (40 cycles). Even  
301 with more conservative quantitative real time PCR cut-offs, national malaria prevalence is still high  
302 (17.4%). The largest change in prevalence occurred with *P. ovale spp.*, where estimated prevalence  
303 dropped from 5.1% to 1.7% at different cycle cut offs, reflecting the high number of low density  
304 infections detected (**Figure 2**). The relative decrease in prevalence for each species was not always  
305 consistent, with some regions having no decline in falciparum prevalence with large declines in ovale  
306 malaria (e.g. Karongi near Lake Kivu) or the opposite with no decline in non-falciparum but lower  
307 falciparum prevalence estimates (e.g. Rutsiro and Nyamasheke) (**Table 2**).  
308

309 Not surprisingly, mixed species infections were common and widely distributed, but occurred more  
310 commonly in clusters in the south and east where malaria transmission was the highest (**Supplemental**  
311 **Figure 1**). Among *P. ovale spp.*, *P. malariae*, and *P. vivax* infections, 44%, 45% and 57% (unweighted)  
312 were infected with at least one other species of malaria (**Supplemental Table 4**). Mixed infections are  
313 often underappreciated and may lead to severe disease complications. A recent meta-analysis suggested  
314 that patients with mixed infections have a higher proportion of pulmonary complications and multiple  
315 organ failure than patients with *P. falciparum* infection alone.[38] The impact of mixed species  
316 infections on clinical malaria outcomes in Rwanda is unknown and requires additional evaluation in  
317 symptomatic infections, which were not included in this study.



318

319 Bivariate associations found between survey covariates and falciparum prevalence matched previous  
320 reports for RDT and microscopy prevalence in the DHS.[20,21] Like similar studies, associations of  
321 covariates for non-falciparum malaria were few and traditional risk factors for falciparum malaria did  
322 not appear as important for non-falciparum malaria.[9,16,17,36] This raises concern for how the control  
323 program can target non-falciparum infections without better diagnostics in the community. The reasons  
324 for the relative lack of risk factors, especially for *P. ovale spp.*, remains unclear. Relapsing malaria,  
325 caused by ovale and vivax, may not be associated with typical covariates due to the inability to discern  
326 between incident or relapse infections in the study.

327

328 This is the first national survey in Rwanda to examine four species of human malaria infection using  
329 molecular methods. The use of existing samples and individual level data from a DHS is a highly  
330 informative method to gain insights into national malaria prevalence. However, these studies represent  
331 only a singular cross sectional time point. This analysis can be improved upon by the repeated use of  
332 multiple DHSs, with a new DHS completed in 2019-20, to assess trends in malaria as has been done in  
333 the DRC.[39] Additionally, the relative lack of data for children under 15 makes this survey  
334 nonrepresentative of the true age distribution in Rwanda. School aged children are a particularly  
335 vulnerable group and often have the highest rate of malaria infection in Africa.[40] Because this was a  
336 single cross sectional survey, we also could not determine if *P. ovale spp.* and *P. vivax* infections were  
337 newly acquired or the result of relapse from hypnozoites.

338

339 This study represents the first depiction of asymptomatic falciparum malaria and non-falciparum malaria  
340 infection nationally in Rwanda using molecular methods. The prevalence of asymptomatic falciparum  
341 malaria was significantly higher than estimates with RDT and microscopy.[41] *P. ovale spp.* and *P.*  
342 *malariae* were found across the country; however, few covariates were found to be significantly  
343 associated with non-falciparum infection. *P. vivax* was found, but infrequently. Most non-falciparum  
344 infections had low-density parasitemias and coinfection with *P. falciparum* was common, especially for  
345 *P. ovale spp.* and *P. vivax*. The high rate of *P. ovale* and *P. malariae* infection, with no discernable risk  
346 factors, indicates that the control program needs diagnostic plans for these species in communities  
347 where their prevalence is increasing. The data from this study is critical for national malaria control  
348 goals, given asymptomatic individuals comprise a large reservoir of falciparum infections and a high rate  
349 of relapsing malaria infection that requires radical cure. More up to date data, potentially from the  
350 2019-20 DHS is urgently needed to understand what these data mean for control. However, the utility of  
351 large, nationally representative, molecular surveys is clear, as they provide insights into malaria  
352 surveillance often missed by routine data collection.

353

354

355 **Funding:** This work was funded by the National Institutes for Health (R01AI156267 to JAB, JBM and JJJ  
356 and K24AI134990 to JJJ). The funding for the DHS was provided by the government of Rwanda, the  
357 United States Agency for International Development (USAID), the One United Nations (One UN), the  
358 Global Fund to Fight AIDS, Tuberculosis and Malaria (Global Fund), World Vision International, the Swiss  
359 Agency for Development and Cooperation (SDC), and the Partners in Health (PIH). ICF International  
360 provided technical assistance through The DHS Program, a USAID-funded project providing support and  
361 technical assistance in the implementation of population and health surveys in countries worldwide. The  
362 funders of the study had no role in study design, data collection, data analysis, data interpretation, or  
363 writing of the report.

364  
365 **Author Contributions:** CK, CM, JAB, JBM and JJJ conceived of the study. CG, CM, RK, SW, HMT, DG, KT,  
366 and KB were involved in data generation and analysis. All authors were involved in writing the  
367 manuscript.

368  
369 **Conflict of Interest/Ethics:** Authors do not declare conflicts of interest associated with this work. Dried  
370 Blood Spots (DBS) were provided by the Ministry of Health- Rwanda. Clinical and offset GPS data was  
371 downloaded from DHS-MEASURE. The University of North Carolina and Brown University IRBs deemed  
372 this non-human subjects research.

373 **Data Availability:** Clinical and spatial data are available through the DHS MEASURE website. PCR data is  
374 available upon request. Code used for analysis is available at: <https://github.com/claudiagaither>.

375  
376 **Acknowledgements:** The following reagent was obtained through BEI Resources, NIAID, NIH:  
377 *Plasmodium falciparum*, Strain 3D7, MRA-102, contributed by Daniel J. Carucci. The following reagent  
378 was obtained through BEI Resources, NIAID, NIH: Diagnostic Plasmid Containing the Small Subunit  
379 Ribosomal RNA Gene (18S) from *Plasmodium vivax*, MRA-178, contributed by Peter A. Zimmerman. The  
380 following reagent was obtained through BEI Resources, NIAID, NIH: Diagnostic Plasmid Containing the  
381 Small Subunit Ribosomal RNA Gene (18S) from *Plasmodium malariae*, MRA-179, contributed by Peter A.  
382 Zimmerman. The following reagent was obtained through BEI Resources, NIAID, NIH: Diagnostic Plasmid  
383 Containing the Small Subunit Ribosomal RNA Gene (18S) from *Plasmodium ovale*, MRA-180, contributed  
384 by Peter A. Zimmerman.

385

## 386 REFERENCES

- 387 1. World malaria report 2023 [Internet]. [cited 2023 Sep 15]. Available from:  
388 <https://www.who.int/teams/global-malaria-programme/reports/world-malaria-report-2023>
- 389 2. Boyce MR, O’Meara WP. Use of malaria RDTs in various health contexts across sub-Saharan Africa:  
390 a systematic review. *BMC Public Health*. **2017**; 17(1):470.
- 391 3. Wu L, Hoogen LL van den, Slater H, et al. Comparison of diagnostics for the detection of  
392 asymptomatic *Plasmodium falciparum* infections to inform control and elimination strategies.  
393 *Nature*. Nature Publishing Group; **2015**; 528(7580):S86–S93.
- 394 4. Lin JT, Saunders DL, Meshnick SR. The role of submicroscopic parasitemia in malaria transmission:  
395 what is the evidence? *Trends Parasitol*. Elsevier; **2014**; 30(4):183–190.
- 396 5. Chen I, Clarke SE, Gosling R, et al. “Asymptomatic” Malaria: A Chronic and Debilitating Infection  
397 That Should Be Treated. *PLoS Med* [Internet]. PLOS; **2016** [cited 2023 Sep 15]; 13(1). Available  
398 from: <https://www.ncbi.nlm.nih.gov/pmc/articles/PMC4718522/>
- 399 6. Sumner KM, Mangeni JN, Obala AA, et al. Impact of asymptomatic *Plasmodium falciparum* infection  
400 on the risk of subsequent symptomatic malaria in a longitudinal cohort in Kenya. *eLife Sciences*  
401 Publications Limited; **2021** [cited 2023 Sep 15]; . Available from:  
402 <https://elifesciences.org/articles/68812>
- 403 7. Yman V, Wandell G, Mutemi DD, et al. Persistent transmission of *Plasmodium malariae* and  
404 *Plasmodium ovale* species in an area of declining *Plasmodium falciparum* transmission in eastern  
405 Tanzania. *PLoS Negl Trop Dis*. Public Library of Science; **2019**; 13(5):e0007414.
- 406 8. Mapping the global endemicity and clinical burden of *Plasmodium vivax*, 2000–17: a spatial and  
407 temporal modelling study. *Lancet*. Elsevier; **2019**; 394(10195):332–343.
- 408 9. Brazeau NF, Mitchell CL, Morgan AP, et al. The epidemiology of *Plasmodium vivax* among adults in  
409 the Democratic Republic of the Congo. *Nat Commun*. **2021**; 12(1):4169.
- 410 10. Twohig KA, Pfeiffer DA, Baird JK, et al. Growing evidence of *Plasmodium vivax* across malaria-  
411 endemic Africa. *PLoS Negl Trop Dis*. **2019**; 13(1):e0007140.
- 412 11. Richter J, Franken G, Mehlhorn H, Labisch A, Häussinger D. What is the evidence for the existence  
413 of *Plasmodium ovale* hypnozoites? *Parasitol Res*. **2010**; 107(6):1285–1290.
- 414 12. Karema C, Wen S, Sidibe A, et al. History of malaria control in Rwanda: implications for future  
415 elimination in Rwanda and other malaria-endemic countries. *Malar J* [Internet]. BMC; **2020** [cited  
416 2023 Sep 15]; 19. Available from: <https://www.ncbi.nlm.nih.gov/pmc/articles/PMC7539391/>
- 417 13. [No title] [Internet]. [cited 2023 Nov 2]. Available from:  
418 <https://d1u4sg1s9ptc4z.cloudfront.net/uploads/2022/01/FY-2022-RDMA-MOP.pdf>
- 419 14. [No title] [Internet]. [cited 2023 Nov 2]. Available from:  
420 [https://d1u4sg1s9ptc4z.cloudfront.net/uploads/2021/03/fy-2017-rwanda-malaria-operational-](https://d1u4sg1s9ptc4z.cloudfront.net/uploads/2021/03/fy-2017-rwanda-malaria-operational-plan.pdf)  
421 [plan.pdf](https://d1u4sg1s9ptc4z.cloudfront.net/uploads/2021/03/fy-2017-rwanda-malaria-operational-plan.pdf)

- 422 15. [No title] [Internet]. [cited 2023 Nov 2]. Available from:  
423 <https://d1u4sg1s9ptc4z.cloudfront.net/uploads/2021/03/fy-2017-rwanda-malaria-operational->  
424 [plan.pdf](https://d1u4sg1s9ptc4z.cloudfront.net/uploads/2021/03/fy-2017-rwanda-malaria-operational-plan.pdf)
- 425 16. Gumbo A, Topazian HM, Mwanza A, et al. Occurrence and Distribution of Nonfalciparum Malaria  
426 Parasite Species Among Adolescents and Adults in Malawi. *J Infect Dis* [Internet]. *J Infect Dis*; **2022**  
427 [cited 2023 Sep 15]; 225(2). Available from: <https://pubmed.ncbi.nlm.nih.gov/34244739/>
- 428 17. Mitchell CL, Brazeau NF, Keeler C, et al. Under the Radar: Epidemiology of Plasmodium ovale in the  
429 Democratic Republic of the Congo. *J Infect Dis* [Internet]. *J Infect Dis*; **2021** [cited 2023 Sep 15];  
430 223(6). Available from: <https://pubmed.ncbi.nlm.nih.gov/32766832/>
- 431 18. Taylor SM, Messina JP, Hand CC, et al. Molecular malaria epidemiology: mapping and burden  
432 estimates for the Democratic Republic of the Congo, 2007. *PLoS One* [Internet]. *PLoS One*; **2011**  
433 [cited 2023 Sep 15]; 6(1). Available from: <https://pubmed.ncbi.nlm.nih.gov/21305011/>
- 434 19. [No title] [Internet]. [cited 2023 Sep 15]. Available from:  
435 <https://dhsprogram.com/pubs/pdf/FR316/FR316.pdf>
- 436 20. Kubana E, Munyaneza A, Sande S, et al. "A comparative analysis of risk factors of malaria" case  
437 study Gisagara and Bugesera District of Rwanda. RDHS 2014/2015. A retrospective study. *BMC*  
438 *Public Health*. *BioMed Central*; **2023**; 23(1):1–9.
- 439 21. Rudasingwa G, Cho S-I. Determinants of the persistence of malaria in Rwanda. *Malar J*. *BioMed*  
440 *Central*; **2020**; 19(1):1–9.
- 441 22. Sifft KC, Geus D, Mukampunga C, et al. Asymptomatic only at first sight: malaria infection among  
442 schoolchildren in highland Rwanda. *Malar J* [Internet]. *Malar J*; **2016** [cited 2023 Sep 15]; 15(1).  
443 Available from: <https://pubmed.ncbi.nlm.nih.gov/27842542/>
- 444 23. McCaffery JN, Munyaneza T, Uwimana A, et al. Symptomatic Infection in Rwanda. *Open Forum*  
445 *Infect Dis*. **2022**; 9(3):ofac025.
- 446 24. Loon W van, Oliveira R, Bergmann C, et al. Plasmodium vivax Malaria in Duffy-Positive Patients in  
447 Rwanda. *Am J Trop Med Hyg* [Internet]. *Am J Trop Med Hyg*; **2023** [cited 2023 Sep 15]; 109(3).  
448 Available from: <https://pubmed.ncbi.nlm.nih.gov/37549894/>
- 449 25. [No title] [Internet]. [cited 2023 Nov 17]. Available from:  
450 <https://dhsprogram.com/pubs/pdf/FR316/FR316.pdf>
- 451 26. Kirby R, Giesbrecht D, Karema C, et al. Examining the Early Distribution of the Artemisinin-Resistant  
452 R561H Mutation in Areas of Higher Transmission in Rwanda. *Open Forum Infect Dis*. **2023**;  
453 10(4):ofad149.
- 454 27. Walsh PS, Metzger DA, Higushi R. Chelex 100 as a medium for simple extraction of DNA for PCR-  
455 based typing from forensic material. *BioTechniques* 10(4): 506-13 (April 1991). *Biotechniques*.  
456 **2013**; 54(3):134–139.
- 457 28. Rougemont M, Van Saanen M, Sahli R, Hinrikson HP, Bille J, Jaton K. Detection of four Plasmodium  
458 species in blood from humans by 18S rRNA gene subunit-based and species-specific real-time PCR

- 459 assays. *J Clin Microbiol.* **2004**; 42(12):5636–5643.
- 460 29. Hofmann N, Mwingira F, Shekalaghe S, Robinson LJ, Mueller I, Felger I. Ultra-sensitive detection of  
461 *Plasmodium falciparum* by amplification of multi-copy subtelomeric targets. *PLoS Med.* **2015**;  
462 12(3):e1001788.
- 463 30. Mercereau-Puijalon O, Barale J-C, Bischoff E. Three multigene families in *Plasmodium* parasites:  
464 facts and questions. *Int J Parasitol.* **2002**; 32(11):1323–1344.
- 465 31. RCMRD Open Data Site [Internet]. [cited 2023 Sep 15]. Available from:  
466 <https://opendata.rcmrd.org/pages/servir-esa>
- 467 32. Funk C, Peterson P, Landsfeld M, et al. The climate hazards infrared precipitation with stations--a  
468 new environmental record for monitoring extremes. *Sci Data.* **2015**; 2:150066.
- 469 33. [No title] [Internet]. [cited 2023 Nov 2]. Available from:  
470 <https://spatialdata.dhsprogram.com/references/DHS%20Covariates%20Extract%20Data%20Description%202.pdf>  
471
- 472 34. Guide to DHS Statistics [Internet]. [cited 2023 Nov 2]. Available from:  
473 <https://dhsprogram.com/data/Guide-to-DHS-Statistics/index.cfm>
- 474 35. Rosenbaum PR, Rubin DB. The Central Role of the Propensity Score in Observational Studies for  
475 Causal Effects. 1982.
- 476 36. Mitchell CL, Topazian HM, Brazeau NF, et al. Household Prevalence of *Plasmodium falciparum*,  
477 *Plasmodium vivax*, and *Plasmodium ovale* in the Democratic Republic of the Congo, 2013–2014. *Clin*  
478 *Infect Dis.* **2021**; 73(11):e3966–e3969.
- 479 37. Rwanda - Subnational Administrative Boundaries [Internet]. [cited 2023 Sep 15]. Available from:  
480 <https://data.humdata.org/dataset/cod-ab-rwa?>
- 481 38. Kotepui M, Kotepui KU, De Jesus Milanez G, Masangkay FR. *Plasmodium* spp. mixed infection  
482 leading to severe malaria: a systematic review and meta-analysis. *Sci Rep.* **2020**; 10(1):11068.
- 483 39. Deutsch-Feldman M, Aydemir O, Carrel M, et al. The changing landscape of *Plasmodium falciparum*  
484 drug resistance in the Democratic Republic of Congo. *BMC Infect Dis.* **2019**; 19(1):872.
- 485 40. Sendor R, Mitchell CL, Chacky F, et al. Similar Prevalence of *Plasmodium falciparum* and Non-P.  
486 *falciparum* Malaria Infections among Schoolchildren, Tanzania. *Emerg Infect Dis.* **2023**; 29(6):1143–  
487 1153.
- 488 41. [No title] [Internet]. [cited 2023 Nov 11]. Available from:  
489 <https://dhsprogram.com/pubs/pdf/FR316/FR316.pdf>
- 490