

Supplementary Tables

Table S1: Patient characteristics of the high grade serous ovarian cancer (HGSOC) subset of the TCGA-OV cohort.

Parameter	Range / Number of patients (n=226) (%)
Age	34-87
FIGO Stage	
1 and 2	14 (6.2)
3	173 (76.5)
4	37 (16.4)
na	2 (0.9)
BRCAness	116 (51.3)
noBRCAness	110 (48.7)
HRD-scores	6-101
>63	89 (39.4)
≤63	137 (60.6)
Patients with HRR mutation	54 (23.9)
BRCA1 mutations (germline/somatic)	25/3 (11.1/1.3)
BRCA2 mutations (germline/somatic)	14/1 (6.2/0.4)
other HRR mutations	13 (5.8)
Tumor immune phenotype	
Infiltrated	79 (35.0)
Excluded	27 (11.9)
Deserted	97 (42.9)
Unclassified	26 (11.5)
Molecular subtype	
Immunoreactive	66 (29.2)
Differentiated	69 (30.5)
Proliferative	48 (21.2)
Mesenchymal	43 (19.0)

Table S2: Patient characteristics of the HGSOC cohort from the Medical University of Innsbruck (MUI).

Parameter	Range / Number of patients (n=60) (%)
Age	32-83
FIGO Stage	
3	48 (80.0)
4	12 (20.0)
BRCAness	41 (68.3)
noBRCAness	19 (31.7)
BRCA1 mutations	16 (26.7)
BRCA2 mutations	4 (6.7)
Tumor immune phenotype	
Infiltrated	36 (60.0)
Excluded	10 (16.7)
Deserted	14 (23.3)
Molecular subtype	
Immunoreactive	20 (33.3)
Differentiated	17 (28.3)
Proliferative	8 (13.3)
Mesenchymal	15 (25.0)

Table S3: Antibodies used for immunofluorescence staining of ovarian cancer cells from the UWB1.289 and OVCAR3 cell lines.

Antibody	catalogue number	manufacturer
ProLong® Gold Antifade Reagent with DAPI	#8961	Cell Signaling Technology
STING (E9X7F) Rabbit mAb	#90947	Cell Signaling Technology
Phospho-STING (Ser366) (E9A9K) Rabbit mAb	#50907	Cell Signaling Technology
cGAS (E5V3W) Rabbit mAb	#79978	Cell Signaling Technology
Phospho-Histone H2A.X (Ser139) (D7T2V) Mouse mAb	#80312	Cell Signaling Technology
Anti-rabbit IgG (H+L), F(ab') ₂ Fragment (Alexa Fluor® 488 Conjugate)	#4412	Cell Signaling Technology
Anti-mouse IgG (H+L), F(ab') ₂ Fragment (Alexa Fluor® 594 Conjugate)	#8890	Cell Signaling Technology
ds DNA Marker Antibody (HYB331-01)	sc-58749	Santa Cruz Biotechnology

Table S4: Antibodies used for immunohistochemistry staining of patient derived FFPE tissue slides from the MUI cohort.

Target	Antibody	Company
γH2AX (DNA-damage)	AF2288	R&D Systems
STING (cGAS_STING activation)	HPA038116	Sigma Aldrich
CD8 (CD8+ Tcells)	HPA037756	Sigma Aldrich
PD-1 (Exhaustion)	HPA035981	Sigma Aldrich
M2 macrophages CD163	HPA046404	Sigma Aldrich
CD4 (CD4+ T cells)	HPA004472	Sigma Aldrich
FOXP3 (regulatory T-cells)	98377	CellSignaling

Table S5: Immune related gene signatures.

Signature	Ref.	Genes
T-cell exclusion	(1)	<i>BZW2, CCT3, CDK4, GPATCH4, ISYNA1, MDH2, PPIA, RPL31, RPL37A, RPL41, RPS21, RPS27A, RUVBL2, SAE1, UBA52, AHCY, C19orf48, C1QBP, CCT6A, CHCHD2, CTPS1, EEF1G, EIF2S3, EIF3K, EIF4A1, FARSA, FBL, FKBP4, GAS5, GNB2L1, GPI, HNRNPA1, HNRNPC, IDH2, ILF2, NACA, NCL, NME1, NOLC1, PABPC1, PAICS, PFN1, POLD2, PPA1, PTMA, PUF60, RPL10A, RPL11, RPL12, RPL13, RPL13A, RPL13AP5, RPL17, RPL18, RPL18A, RPL21, RPL26, RPL27, RPL28, RPL29, RPL3, RPL36, RPL36A, RPL37, RPL4, RPL5, RPL6, RPL8, RPLP0, RPLP1, RPS10, RPS11, RPS13, RPS14, RPS15, RPS15A, RPS16, RPS17, RPS17L, RPS18, RPS19, RPS23, RPS24, RPS27, RPS28, RPS3, RPS4X, RPS5, RPS6, RPS7, RPS8, RPS9, RPSA, RRS1, SERPINF1, SET, SHMT2, SLC19A1, SLC25A13, SNHG6, SNRPE, SOX4, SSR2, TIMM50, TOP1MT, TUBB, UQCRFS1, UQCRH, VDAC2, APP, ATP5D, ATP5G3, BOP1, BTF3, C6orf48, CACYBP, CCT4, CCT7, CDCA7, DARS, DCTPP1, DDX21, EEF1B2, EEF1D, EEF2, EIF3E, EIF3F, EIF3G, EIF3M, ENO1, EXOSC5, FAM92A1, GGH, GNL3, HMGB1, HNRNPH1, HNRNPM, HSPD1, IFRD2, ILF3, IMPDH2, LDHB, LSM4, LSM7, LYPLA1, MAGEC1, MCM7, MKI67IP, MRPL15, MRPL37, MRPL4, MRPS12, NDUFA11, NME2, NOP16, NPM1, NREP, PLEKHJ, POLR1D, POLR2E, PRMT1, RPL10, RPL14, RPL15, RPL19, RPL22, RPL27A, RPL30, RPL32, RPL35, RPL39, RPL7, RPL7A, RPL9, RPLP2, RPS2, RPS20, RPS25, RPS3A, RQCD1, RSL1D1, SERBP1, SLC25A6, SMARCA4, SMIM15, SNHG15, SNRPB, SNRPC, SNRPD1, SNRPD2, SRM, SSB, TIMM13, TIMM44, TPI1, TRAP1, TRIM28, TYMS, UCK2, UHRF1, XIST, ZFAS1</i>
Inflamed	(2)	<i>IRF1, CD8A, CCL2, CCL3, CCL4, CXCL9, CXCL10, ICOS, GZMK, HLA-DMA, HLA-DMB, HLA-DOA, HLA-DOB</i>
Expand immune	(3)	<i>CXCR6, CD3D, CD2, ITGAL, TAGAP, CIITA, HLA-DRA, PTRPC, CXCL9, CCL5, NKG7, GZMA, PRF1, CCR5, CD3E, GZMK, IFNG, HLA-E, GZMB, PDCD1, SLAMF6, CXCL13, CXCL10, IDO1, LAG3, STAT1, CXCL11</i>
IFNG	(3)	<i>IFNG, STAT1, CCR5, CXCL9, CXCL10, CXCL11, IDO1, PRF1, GZMA, HLA-DRA</i>
CTL	(4)	<i>CD8A, CD8B, GZMA, GZMB, PRF1</i>
CD8	(4)	<i>CD8A, CD8B</i>
CYT	(5)	<i>GZMA, PRF1</i>
CD8 T-cell exhaustion	(6)	<i>PDCD1, LAYN, HAVCR2, LAG3, CD244, CTLA4, LILRB1, TIGIT, TOX, VSIR, BTLA, ENTPD1, CD160, LAIR1</i>
Core NFκB	MSigDB: M8804 (7)	<i>BCL3, CHUK, NFKBIA, NFKBIB, NFKBIE, IKBKB, IKBKE, IKBKG, NFKB1, NFKB2, REL, RELA, RELB</i>
IRF3 targets	MSigDB: M5133 (8)	<i>B4GALT5, IFIT3, ISG15, IFI44, ARG2, PMAIP1, GBP1, F13B, AHNAK, OAS2, NR3C1, IFIT1, PLCG2</i>
STING signaling	MSigDB: M7982 (9)	<i>ADAR, IFNA8, IFNA1, IFNB1, IRF1, IRF2, IRF6, IRF7, IRF9, CCL5</i>
Interferon α response	MSigDB: M5911 (10)	<i>PARP12, PARP14, PARP9, PLSCR1, PNPT1, PROCR, PSMA3, PSMB8, PSMB9, PSME1, PSME2, RIPK2, RNF31, RSAD2, RTP4, SAMD9, SAMD9L, SELL, SLC25A28, SP110, STAT2, TAP1, TDRD7, TENT5A, TMEM140, TRAFD1, TRIM14, TRIM21, TRIM25, TRIM26, TRIM5, TXNIP, UBA7, UBE2L6, USP18, WARS1</i>
Integrins	(11)	<i>ITGAD, ITGAE, ITGAL, ITGAM, ITGAV, ITGAX, ITGA1, ITGA2, ITGA2B, ITGA3, ITGA4, ITGA5, ITGA6, ITGA7, ITGA8, ITGA9, ITGA10, ITGA11, ITGBL1, ITGB1, ITGB2, ITGB3, ITGB4, ITGB5, ITGB6, ITGB7, ITGB8</i>
Chemokines	(12)	<i>CCL1, CCL2, CCL3, CCL3L1, CCL3L3, CCL4, CCL4L1, CCL4L2, CCL5, CCL7, CCL8, CCL11, CCL13, CCL14, CCL15, CCL16, CCL17, CCL18, CCL19, CCL20, CCL21, CCL22, CCL23, CCL24, CCL25, CCL26, CCL27, CCL28, CXCL1, CXCL2, CXCL3, CXCL5, CXCL6, CXCL8, CXCL9, CXCL10, CXCL11, CXCL12, CXCL13, CXCL14, CXCL16, CXCL17, CX3CL1, XCL1, XCL2</i>
Cytokines	(13)	<i>IL1A, IL1B, IL1F10, IL1RN, IL2, IL3, IL4, IL5, IL6, IL7, CXCL8, IL9, IL10, IL11, IL12A, IL12B, IL13, IL15, IL16, IL17A, IL17B, IL17C, IL17D, IL17F, IL18, IL19, IL20, IL21, IL22, IL23A, IL24, IL25, IL26, IL27, IL31, IL32, IL33, IL34, IL36A, IL36B, IL36G, IL36RN, IL37</i>
HLAs	(14)	<i>HLA-A, HLA-B, HLA-C, HLA-DMA, HLA-DMB, HLA-DOA, HLA-DOB, HLA-DPA1, HLA-DPB1, HLA-DQA1, HLA-DQA2, HLA-DQB1, HLA-DQB2, HLA-DQB3, HLA-DRA, HLA-DRB1, HLA-DRB3, HLA-DRB4, HLA-DRB5, HLA-E, HLA-F, HLA-G</i>

Table S6: Lists of selected genes associated with different immune related functions corresponding to Figure 4A.

Signature	Genes
Cytotoxic effector function	<i>CD8A, CD8B, EOMES, FASLG, GNLY, GZMA, GZMB, GZMK, IFNG, PRF1, TBX21, ZAP70</i>
Immune response	<i>IRF1, CD8A, CCL2, CCL3, CCL4, CXCL9, CXCL10, ICOS, GZMK, HLA-DMA, HLA-DMB, HLA-DOA, HLA-DOB</i>
Antigen processing and presentation	<i>B2M, CD1C, CD1D, CD74, CD83, CIITA, HLA-A, HLA-B, HLA-C, HLA-DMA, HLA-DMB, HLA-DOA, HLA-DOB, HLA-DPA1, HLA-DPB1, HLA-DQA1, HLA-DQA2, HLA-DQB1, HLA-DQB2, HLA-DRA, HLA-DRB1, HLA-E, HLA-F, HLA-G, MR1, PSMB7, PSMB8, PSMB9, TAP1, TAP2, TAPBP</i>
Immune checkpoints	<i>ADORA2A, BTLA, BTNL2, CD160, CD2, CD200, CD200R1, CD226, CD244, CD27, CD274, CD276, CD28, CD40, CD40LG, CD47, CD48, CD58, CD69, CD70, CD80, CD86, CD96, CEACAM1, CTLA4, ENTPD1, EOMES, HAVCR1, HAVCR2, HHLA2, ICOS, ICOSLG, IDO1, IDO2, KDR, KIR2DL4, KLRC1, KLRK1, LAG3, LAIR1, LGALS9, LTA, MICA, MICB, NCR3, NCR3LG1, NECTIN2, NECTIN3, NT5E, PDCD, PDCD1LG2, PVR, RAET1E, SIRPA, SIVA1, SLAMF1, SLAMF6, TDO2, TIGIT, TIMD4, TMEM173, TMIGD2, TNFRSF13B, TNFRSF13C, TNFRSF14, TNFRSF17, TNFRSF18, TNFRSF25, TNFRSF4, TNFRSF8, TNFRSF9, TNFSF13, TNFSF13B, TNFSF14, TNFSF15, TNFSF18, TNFSF4, TNFSF8, TNFSF9, TRAF1, TRAF2, TRAF3, ULBP1, VSIR, VTCN1</i>
INFG	<i>STAT1, CCR5, CXCL9, CXCL10, CXCL11, IDO1, PRF1, GZMA, HLA-DRA</i>
T-cell exhaustion	<i>HAVCR2, PDCD1, ENTPD1, TNFRSF9, SIRPG, CTLA4, CXCL13, TOX, MYO7A, VCAM1, TIGIT, LAG3, NDFIP2, ACP5, DUSP4, MIR155HG, PHLDA1, CCL3, IFNG, GZMB, PARK7, CXCR6, CD27, FKBP1A, BST2, CD63, CD27-AS1, ITGAE, HLA-DRA, IGFLR1, CTSD, CD38, ITM2A, SNAP47, LAYN, KRT86, TNFRSF18, RBPJ, CD82, RGS1</i>
TGFb/CAF marker	<i>RCN3, ZCCHC24, BMP4, TNFRSF8, TDO2, INHBA, NTM, FAP, ACTA2, ASPN, COL11A1, CSPG4, DES, FAP, FN1, FOXF1, ITGA11, ITGB1, MFAP5, MME, OGN, P4HA1, P4HB, PDGFRA, PDGFRB, PDPN, POSTN, S100A4, SLC16A4, SPARC, THY1, TNC, VIM, ZEB1</i>

Table S7: Results of multivariable survival analysis using Cox regression for BRCAness in the TCGA cohort.

	HR	95% confidence	p	
BRCAness	0.488	(1.40-2.99)	0.00023	***
Tumor residual disease	2.919	(1.55-5.48)	0.00086	***
Age	1.027	(1.01-1.05)	0.0024	**
FIGO Stage 2 vs.3	0.956	(0.30-3.08)	0.9401	
FIGO Stage 3 vs 4	1.426	(0.42-4.83)	0.5682	

Table S8: Results of multivariable survival analysis using Cox regression for the vulnerability score in the TCGA cohort.

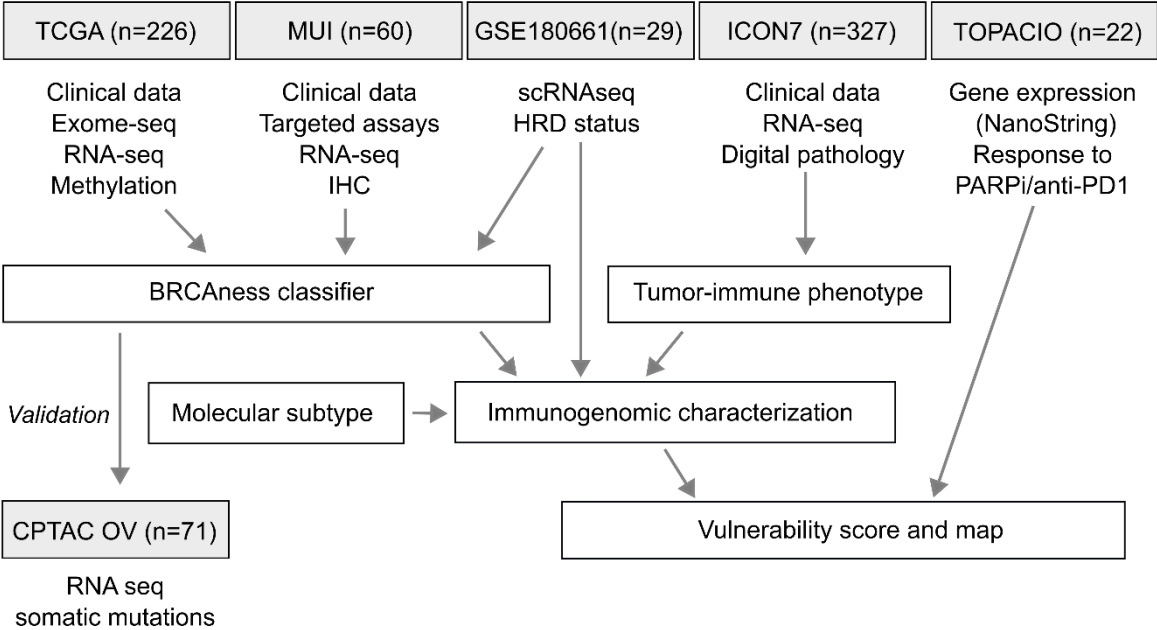
	HR	95% confidence	p	
Vulnerability score	0.754	(0.65-0.87)	0.00015	***
Tumor residual disease	2.963	(1.58-5.56)	0.00071	***
Age	1.027	(1.01-1.04)	0.0023	**
FIGO Stage 2 vs.3	0.964	(0.30-3.10)	0.9516	
FIGO Stage 3 vs 4	1.446	(0.43-4.90)	0.5529	

Table S9: Results of multivariable survival analysis using Cox regression for CD8 T-cell infiltration in the TCGA cohort.

	HR	95% confidence	p	
CD8+ T-cell infiltration	0.00043	(0.00-1.95E+06)	0.494	
Tumor residual disease	3.286	(1.75-6.16)	0.00021	***
Age	1.027	(1.01-1.05)	0.0022	**
FIGO Stage 2 vs.3	1.129	(0.35-3.60)	0.8379	
FIGO Stage 3 vs 4	1.515	(0.45-5.08)	0.5015	

Supplementary Figures

Data from patient cohorts



Cell line data



Figure S1: Workflow of analyses and ovarian cancer patient cohorts with corresponding data sets used for immunogenomic characterization of patient samples and ovarian cancer cell line data. IHC, immunohistochemistry; OV, ovarian cancer; HRD, homologous recombination repair deficiency; PARPi, PARP inhibitor; qPCR, quantitative reverse transcription polymerase chain reaction; scRNAseq, single cell RNA sequencing; CPATC, Clinical Proteomic Tumor Analysis Consortium; TCGA, The Cancer Genome Atlas; MUI, Medical University of Innsbruck; GSE, Gene Expression Omnibus Identifier.

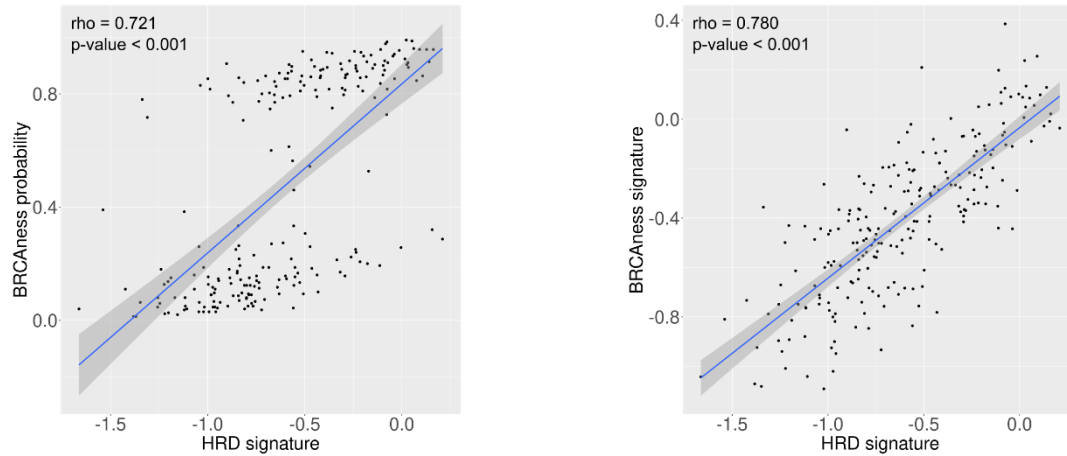


Figure S2: Correlation of different BRCAness and HRD-parameter in the TCGA cohort. BRCAness prediction probability and HRD signature (15) (left), BRCAness signature and HRD signature (15) (right).

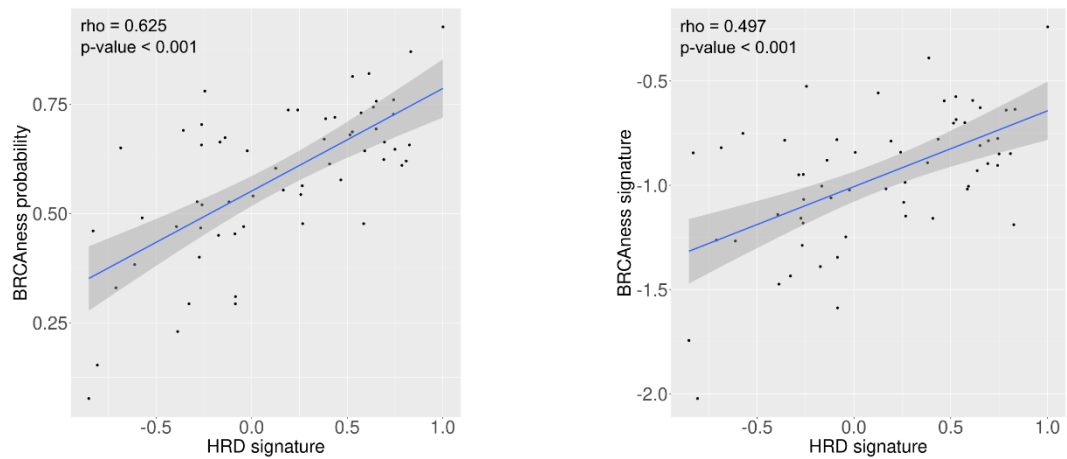


Figure S3: Correlation of different BRCAness and HRD-parameter in the MUI cohort. (left) BRCAness prediction probability and HRD signature (15), BRCAness signature and HRD signature (15).

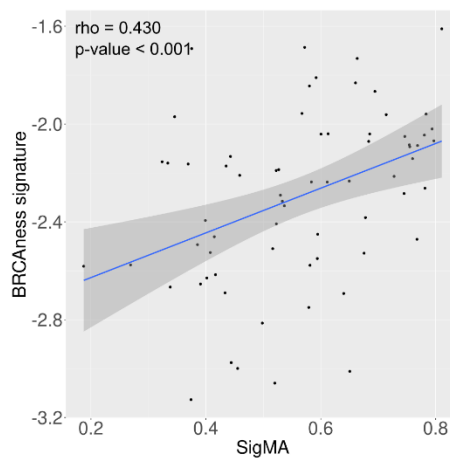


Figure S4: Correlation of the BRCAness signature and SigMA (Mutational signature 3) in the CPTAC-OV cohort.

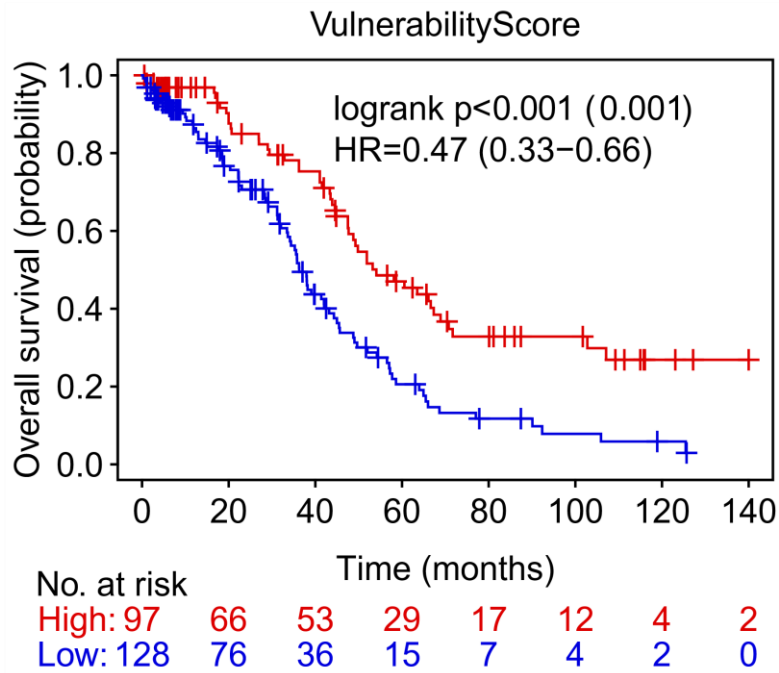


Figure S5: Kaplan Meier curve for the vulnerability score in the TCGA cohort. Patients were dichotomized using maximum logrank statistics/minimal p-value. Corrected p-values were calculated according to Altman et al. (16) and indicated in brackets. TCGA, The Cancer Genome Atlas.

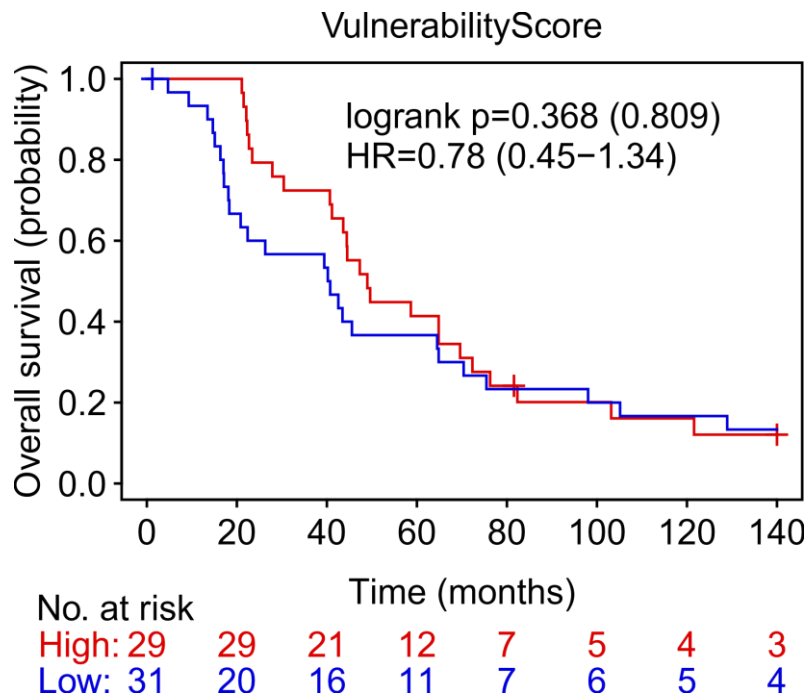


Figure S6: Kaplan Meier curve for the vulnerability score in the MUI cohort. Patients were dichotomized using maximum logrank statistics/minimal p. Corrected p-values were calculated according to Altman et al. (16) and indicated in brackets. MUI, Medical University of Innsbruck.

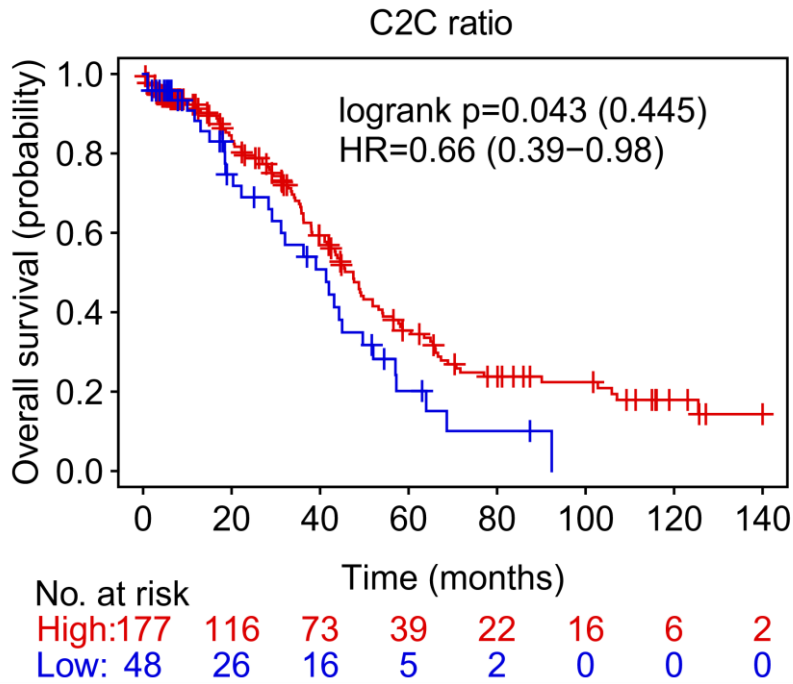


Figure S7: Kaplan Meier curve for the CYT to C1QA ratio (C2C) in the TCGA cohort. Patients were dichotomized using maximum logrank statistics / minimal p-value. Corrected p-values were calculated according to Altman et al. (16) and indicated in brackets. TCGA, The Cancer Genome Atlas.

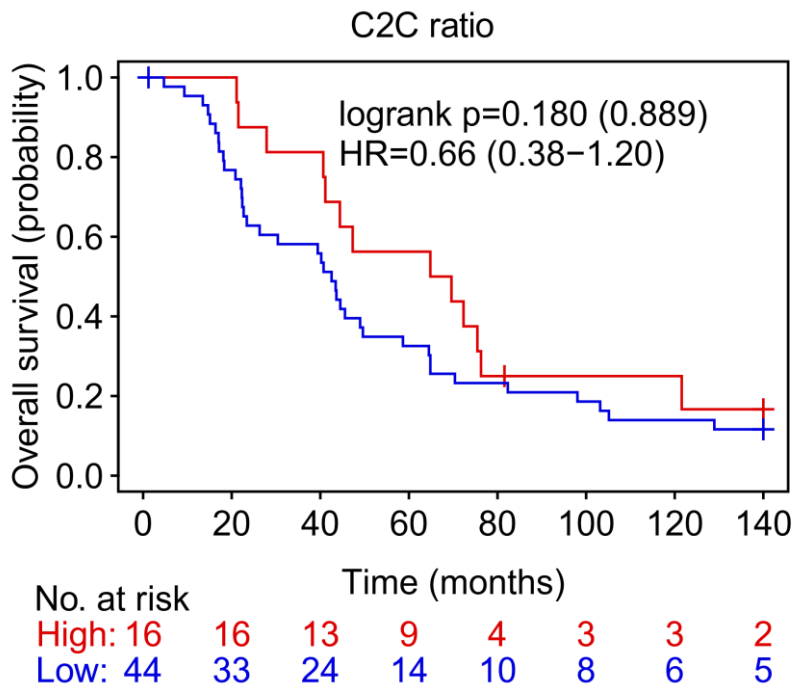


Figure S8: Kaplan Meier curve for the CYT to C1QA ratio (C2C) in the MUI cohort. Patients were dichotomized using maximum logrank statistics / minimal p-value. Corrected p-values were calculated according to Altman et al. (16) and indicated in brackets. MUI, Medical University of Innsbruck.

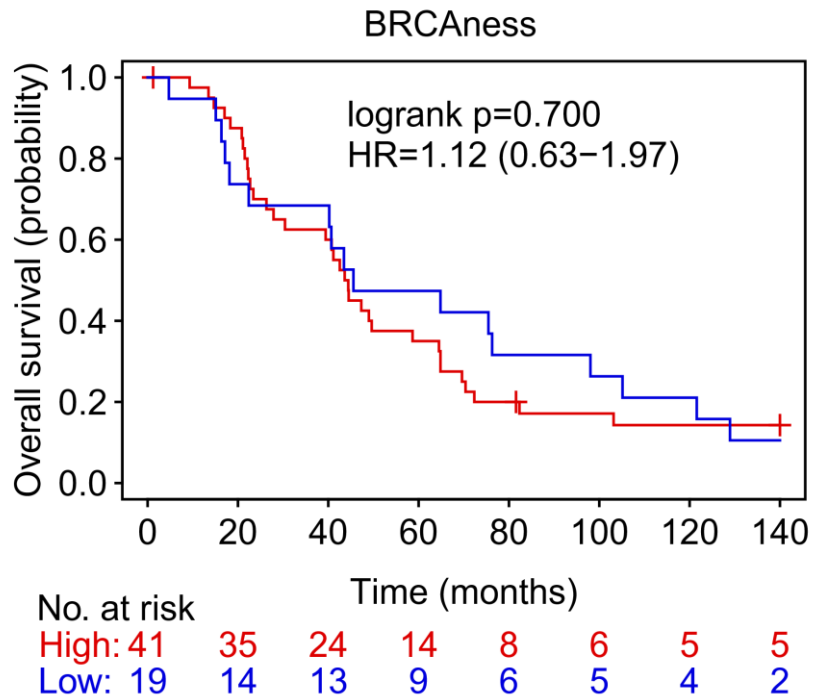


Figure S9: Kaplan Meier curve for BRCAness (red) versus noBRCAness (blue) in the MUI cohort. MUI, Medical University of Innsbruck.

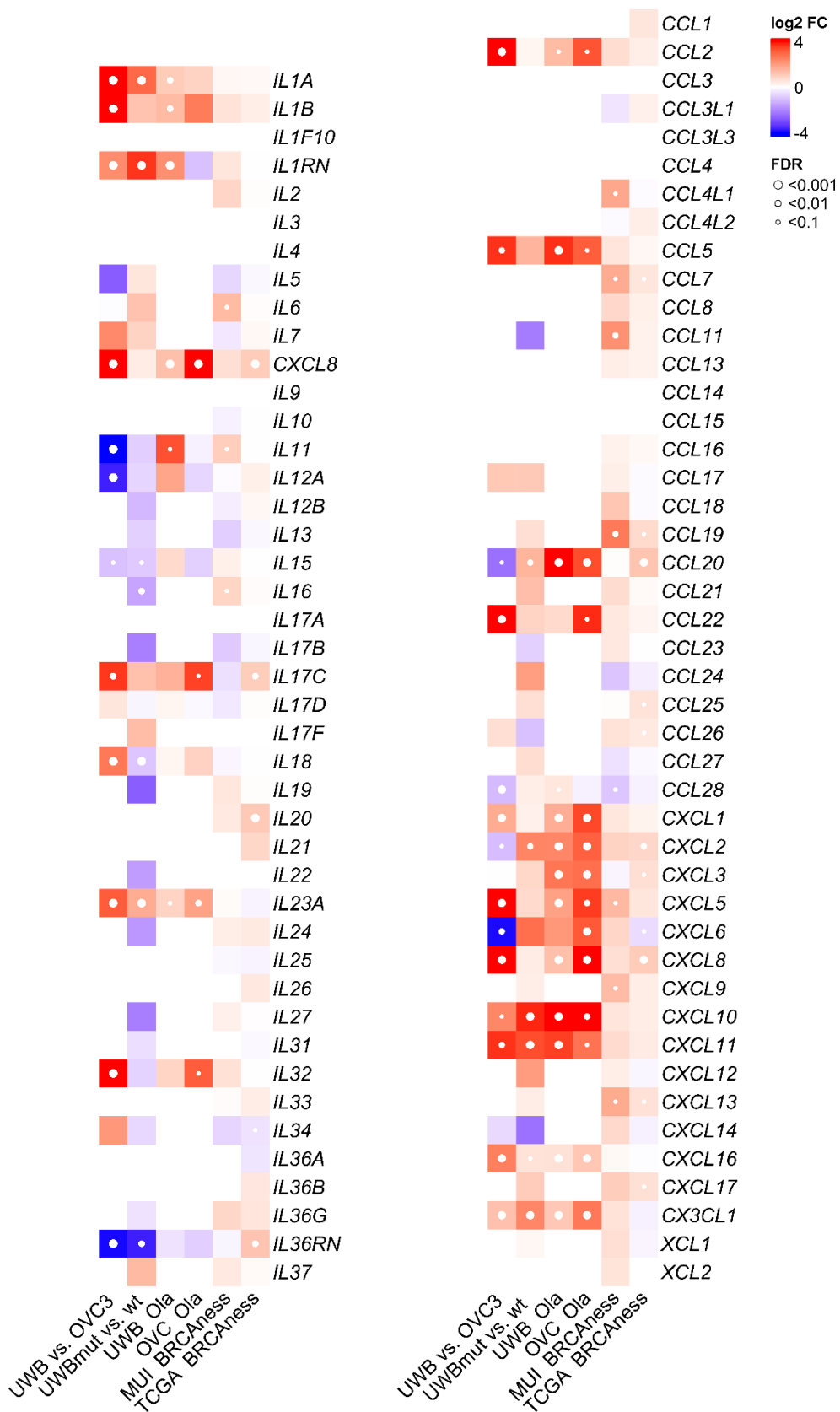


Figure S10: Differential expressed cytokines and chemokines between BRCAness noBRCAness patients as well as by olaparib treatment in cell lines. UWB, cell line UWB1.289; OVC, cell line OVCAR3; TCGA, The Cancer Genome Atlas; MUI, Medical University of Innsbruck; Ola, Olaparib treatment; wt, wilde type; mut, BRCA1 mutation.

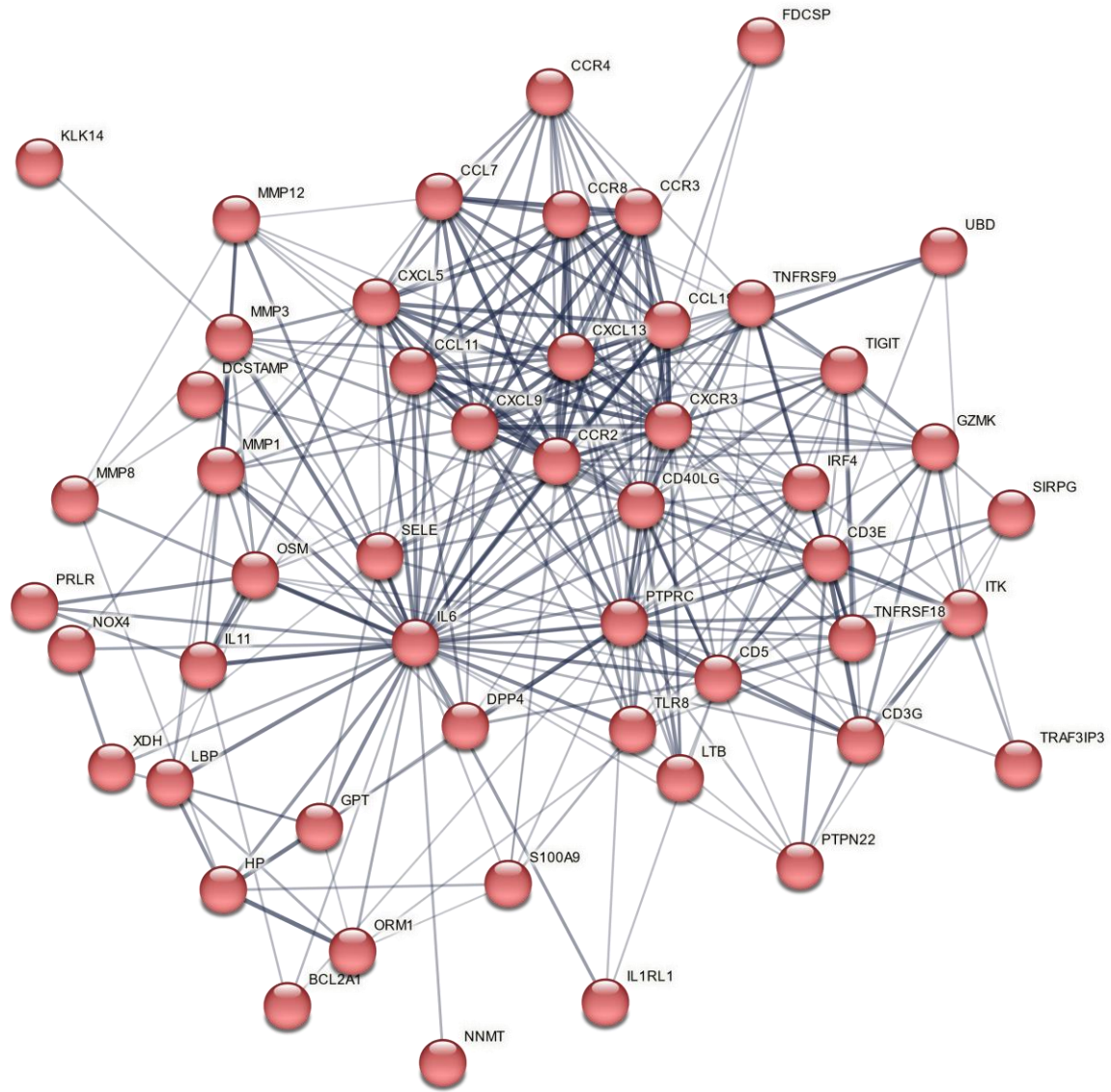


Figure S11: Network cluster of genes associated with immune signaling pathways which are upregulated in the BRCAness samples of the MUI Cohort. MUI, Medical University of Innsbruck.

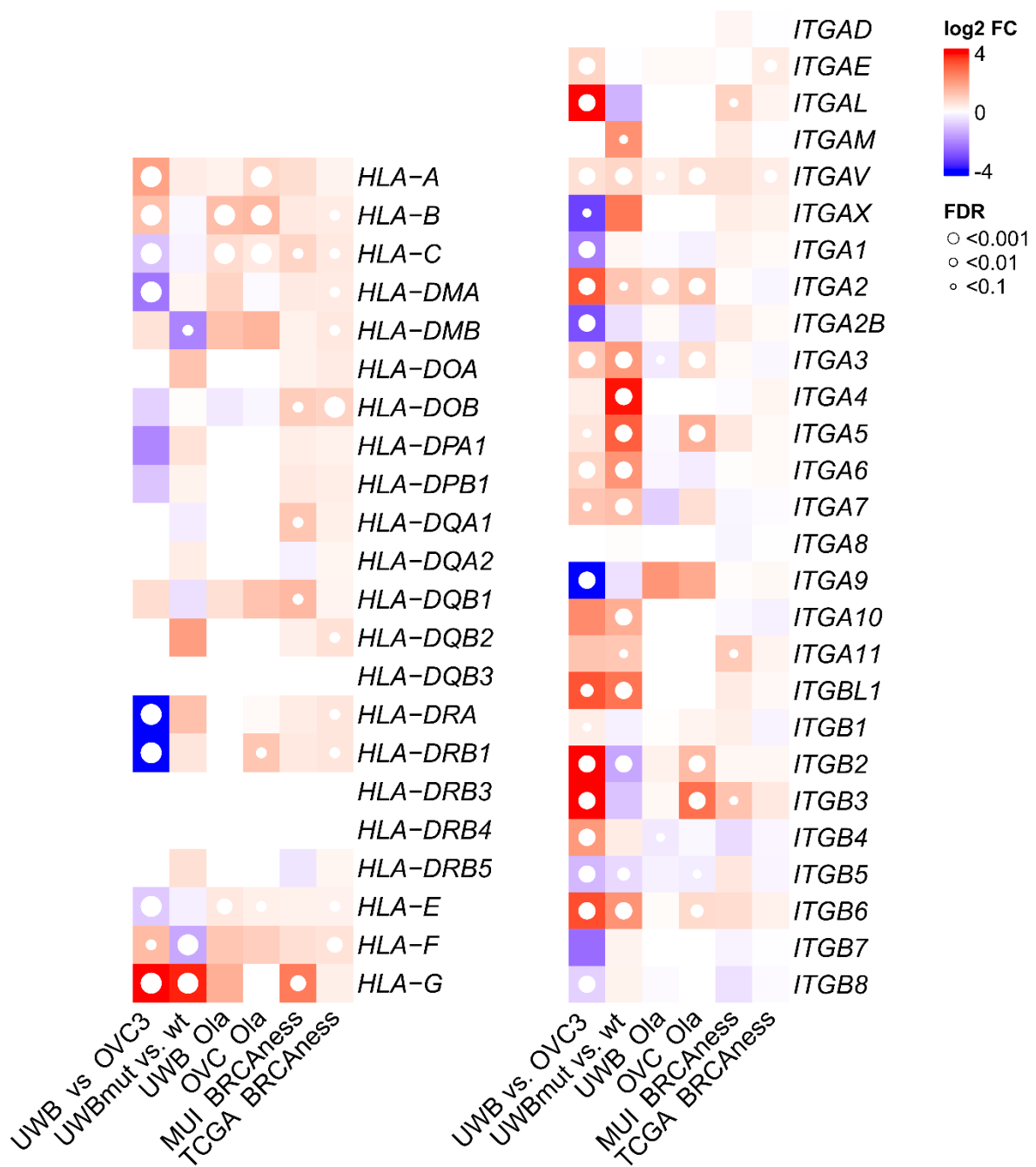


Figure S12: Differentially expressed HLA-genes and integrins between BRCAness noBRCAness patients as well as by olaparib treatment in cell lines. UWB, cell line UWB1.289; OVC, cell line OVCAR3; TCGA, The Cancer Genome Atlas; MUI, Medical University of Innsbruck; Ola, Olaparib treatment; wt, wilde type; mut, BRCA1 mutation.

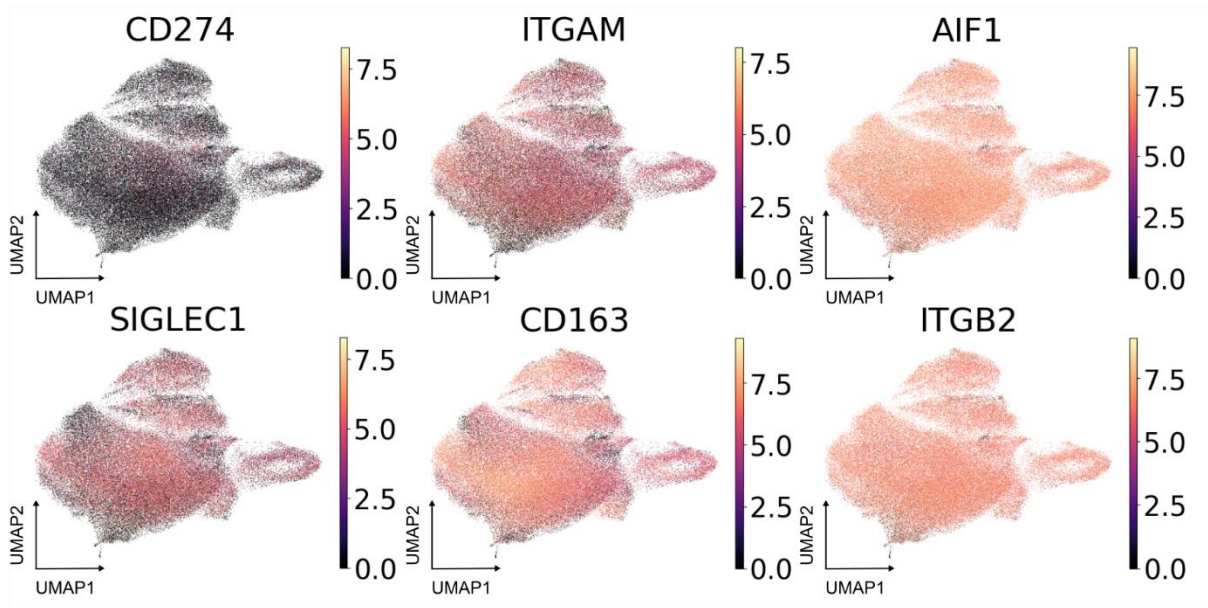


Figure S13: UMAP plots of selected macrophage associated genes in the myeloid cell compartment of single cell RNAseq analyses.

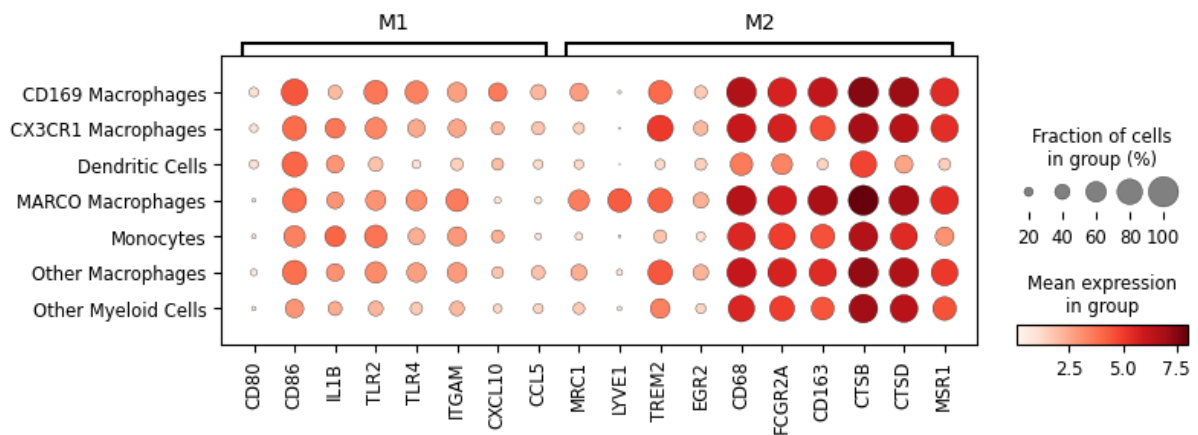


Figure S14: Expression of marker genes for macrophage polarization in the myeloid subgroups of the ovarian cancer microenvironment. Expression of M1 marker genes (left) and M2 marker genes right (M2) indicate a bias towards M2 macrophages, although discrimination is limited.

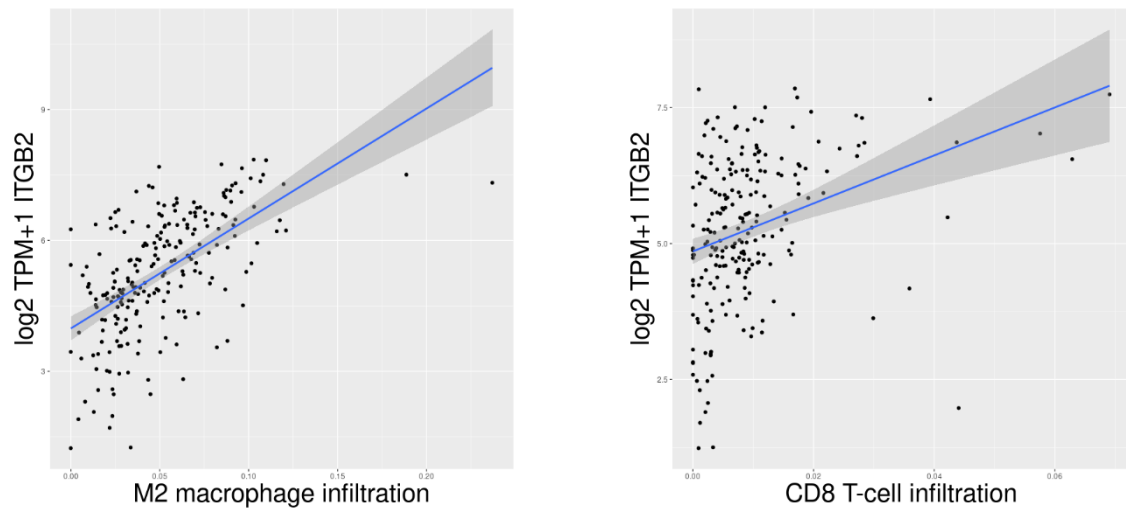


Figure S15: Correlation of M2 macrophage (left) and CD8 T-cell infiltration (right) and *ITGB2* expression in the TCGA cohort. TCGA, The Cancer Genome Atlas.



Figure S16: Expression of *CCL20* in myeloid cells and to a less extent in some tumor cells of BRCAness samples.

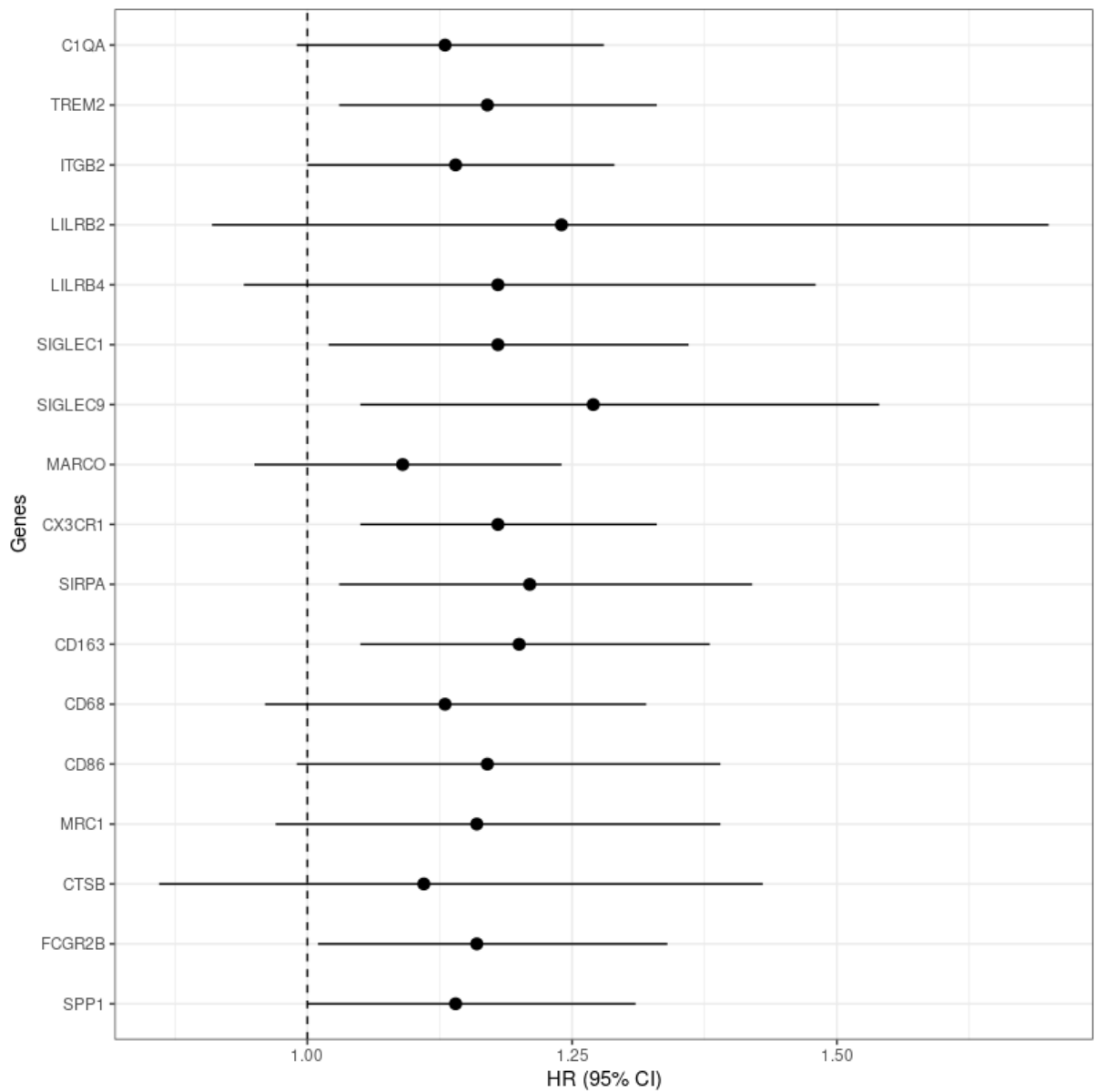


Figure S17: Forest plot showing the hazard ratio and the 95% CI for selected genes associated with tumor associated macrophages in the TCGA cohort using Cox regression and including BRCAness status as covariate. CI, confidence interval.

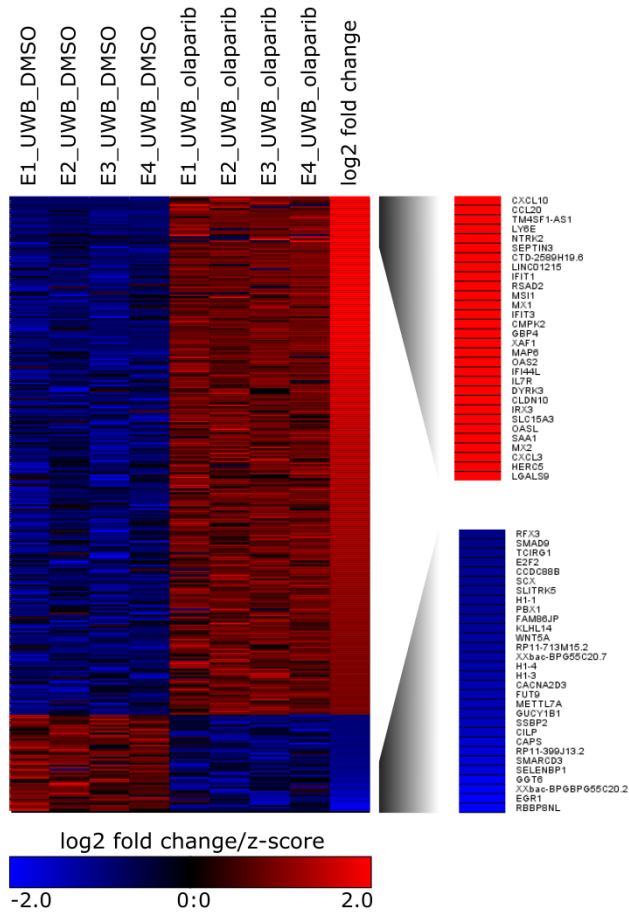


Figure S18: Z-scores of normalized counts and log2-fold changes of significant differential expressed genes between olaparib treated and control treated samples of the UWB1.289 cell line.

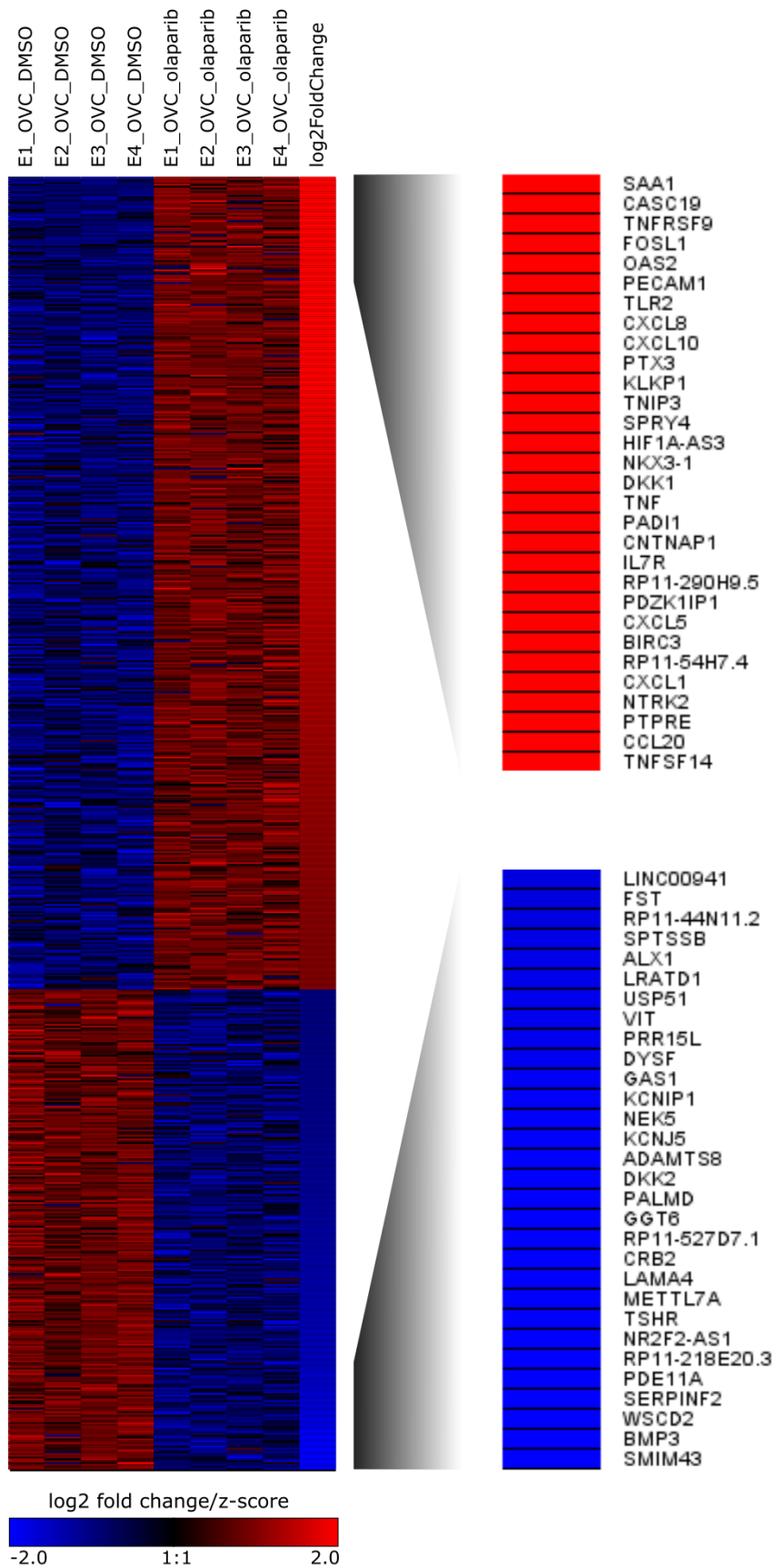


Figure S19: Heatmap of z-scores of normalized counts and log₂-fold changes of significant differential expressed genes between olaparib treated and control treated samples of the OVCAR3 cell line.

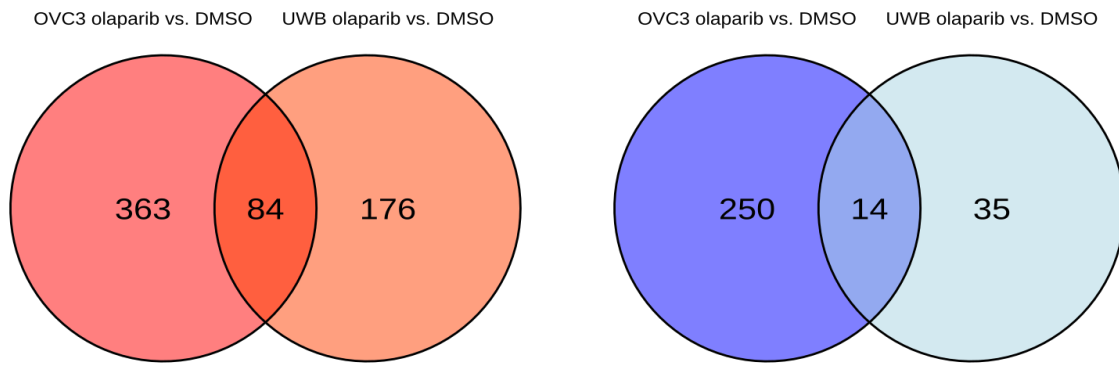


Figure S20: Number and overlap of significant up- and down regulated genes by olaparib treatment in the OVCAR3 and UWB1.289 ovarian cancer cell lines.

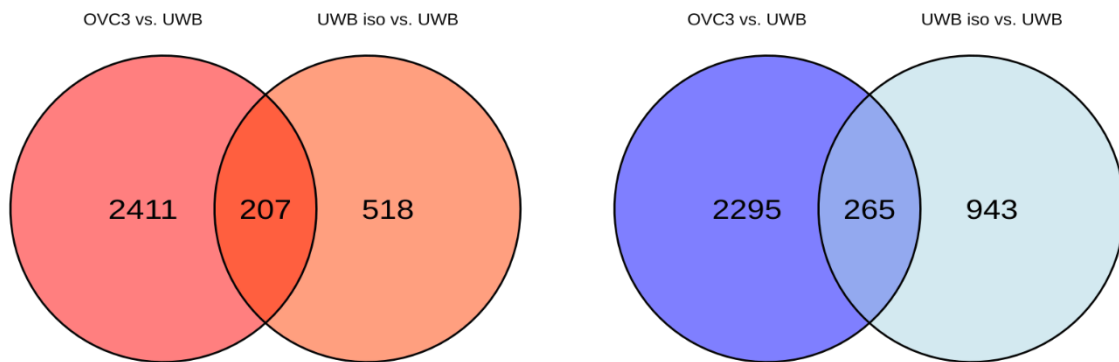


Figure S21: Number and overlap of significant differentially regulated genes between the UWB1.289 and OVCAR3 ovarian cancer cell lines respectively UWB1.289 and isogenic UWB with reintroduced wild type *BRCA1* gene.

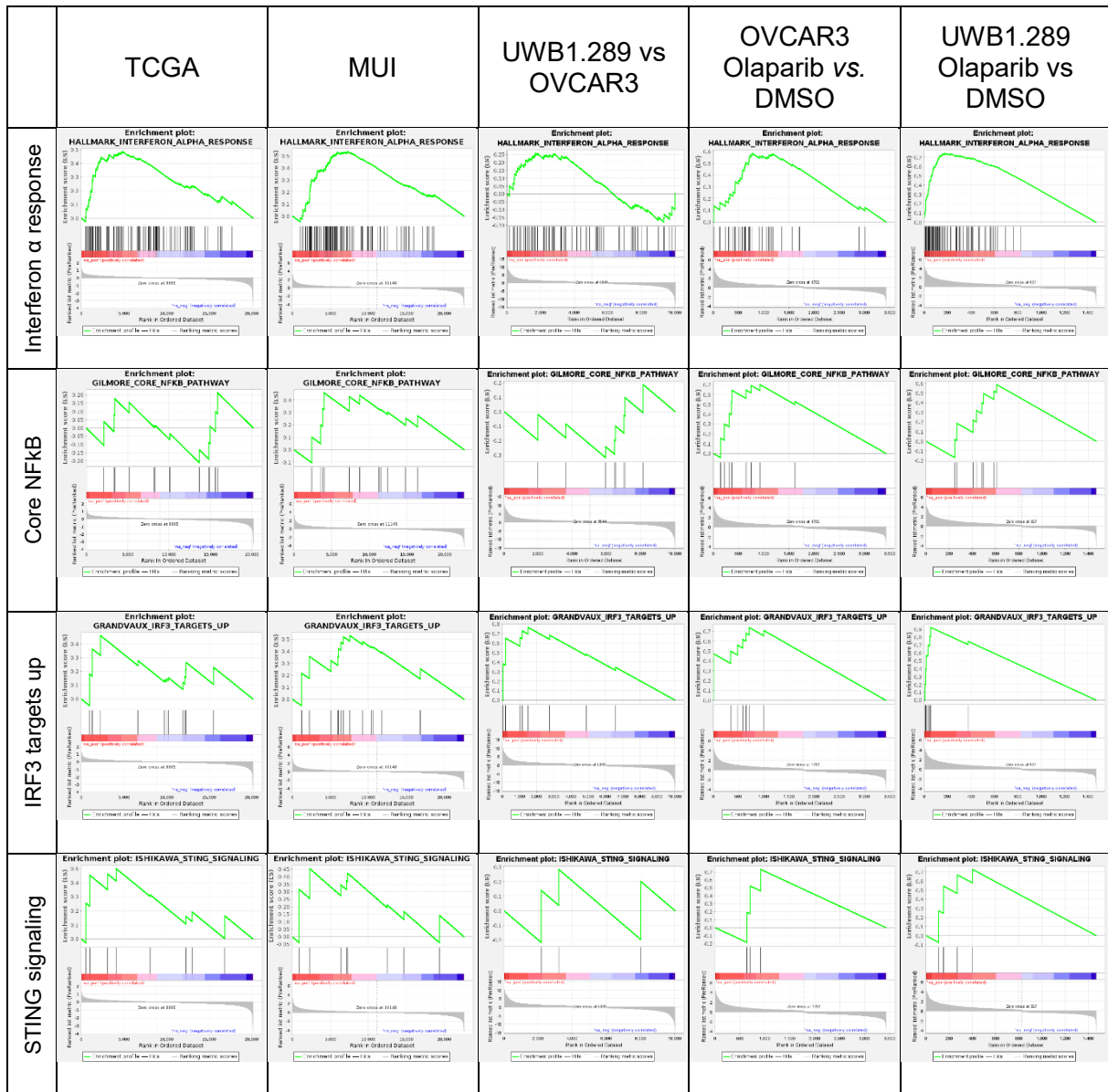
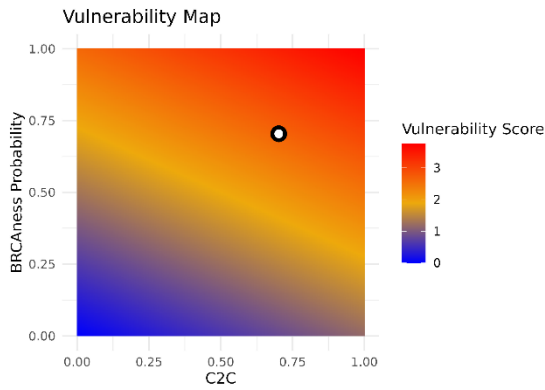


Figure S22: Enrichment plots for the pathways shown in Figure 3C, which are associated with the activation of the cGAS STING pathway.

OvRSeq Analysis Report for MUI40

2023-12-04

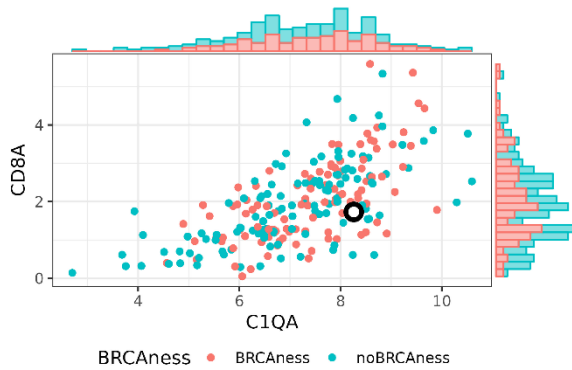
The vulnerability map indicate based on BRCAness probability and CYT to C1QA ratio (C2C) indications with a high vulnerability (score) for response to combination immunotherapy with PARPi and immune checkpoint inhibitors.



Patient values

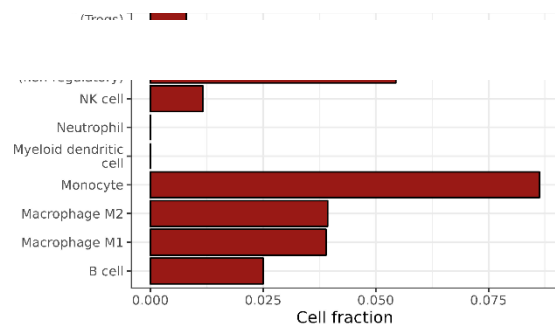
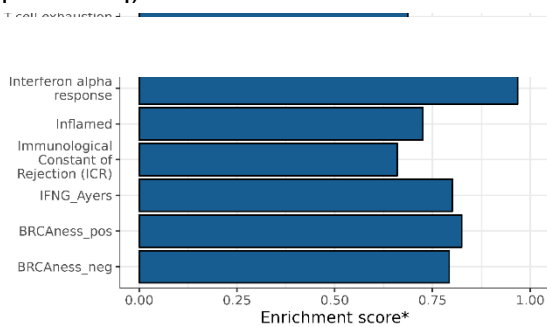
Feature	Value
BRCAness status	1 (0.70)
Tumor immune phenotype	Infiltrated
Molecular subtypes	IMR
BRCAness immunetype	BRIT
Vulnerability score	2.22
Immunophenoscore	5
CYT to C1QA ratio (C2C)	0.70
Angiogenesis Score	1

Marker gene expression and reference values from TCGA-OV [median (Q1-Q3)].



Feature	Patient Value	TCGA IQR
CD274	1.91	1.32 (0.87-1.86)
GZMB	3.30	2.55 (1.62-3.51)
PRF1	2.29	1.73 (1.15-2.50)
C1QA	8.26	7.35 (6.41-8.18)
CD8A	1.73	1.90 (1.17-2.65)
IDO1	4.52	4.16 (2.80-5.45)
FOXP3	1.59	1.94 (1.32-2.52)
TREM2	6.24	4.83 (3.76-5.64)
STAT1	7.24	7.01 (6.21-7.55)
HLA-DRA	7.13	7.26 (6.30-8.00)
CXCL10	6.92	6.38 (5.03-7.54)

Enrichment of gene signatures or pathways (ssGSEA) and estimated immune cell fraction (quantIseq)



*Enrichment score is standardized to min-max values from TCGA-OV reference.

Enrichment score*

Cell fraction

1

Figure S23: Report for comprehensive characterization including vulnerability map and score of one HGSOc patient sample from RNA sequencing data using the web application <https://ovrseq.icbi.at> or the R package OvRSeq (<https://github.com/icbi-lab/OvRSeq>).

References (supplement)

1. Jerby-Arnon L, Shah P, Cuoco MS, Rodman C, Su MJ, Melms JC, et al. A Cancer Cell Program Promotes T Cell Exclusion and Resistance to Checkpoint Blockade. *Cell*. 2018;175(4):984-997.e24.
2. Spranger S, Luke JJ, Bao R, Zha Y, Hernandez KM, Li Y, et al. Density of immunogenic antigens does not explain the presence or absence of the T-cell-inflamed tumor microenvironment in melanoma. *Proceedings of the National Academy of Sciences*. 2016;113(48):E7759-68.
3. Ayers M, Lunceford J, Nebozhyn M, Murphy E, Loboda A, Kaufman DR, et al. IFN- γ -related mRNA profile predicts clinical response to PD-1 blockade. *J Clin Invest*. 2017;127(8):2930-40.
4. Jiang P, Gu S, Pan D, Fu J, Sahu A, Hu X, et al. Signatures of T cell dysfunction and exclusion predict cancer immunotherapy response. *Nat Med*. 2018;24(10):1550-8.
5. Rooney MS, Shukla SA, Wu CJ, Getz G, Hacohen N. Molecular and Genetic Properties of Tumors Associated with Local Immune Cytolytic Activity. *Cell*. 2015;160(1):48-61.
6. Zheng L, Qin S, Si W, Wang A, Xing B, Gao R, Ren X, Wang L, Wu X, Zhang J, Wu N, Zhang N, Zheng H, Ouyang H, Chen K, Bu Z, Hu X, Ji J, Zhang Z. Pan-cancer single-cell landscape of tumor-infiltrating T cells. *Science*. 2021;374(6574):abe6474
7. Gilmore TD. Introduction to NF-kappaB: players, pathways, perspectives. *Oncogene*. 2006;25(51):6680-4.
8. Grandvaux N, Servant MJ, tenOever B, Sen GC, Balachandran S, Barber GN, et al. Transcriptional profiling of interferon regulatory factor 3 target genes: direct involvement in the regulation of interferon-stimulated genes. *J Virol*. 2002;76(11):5532-9.
9. Ishikawa H, Barber GN. STING is an endoplasmic reticulum adaptor that facilitates innate immune signalling. *Nature*. 2008;455(7213):674-8.
10. Liberzon A, Birger C, Thorvaldsdóttir H, Ghandi M, Mesirov JP, Tamayo P. The Molecular Signatures Database (MSigDB) hallmark gene set collection. *Cell Syst*. 2015;1(6):417-25.
11. Integrins | HUGO Gene Nomenclature Committee [Oct 02 2023]. <https://www.genenames.org/data/genegroup/#!/group/597>
12. Chemokine ligands | HUGO Gene Nomenclature Committee [Oct 02 2023] <https://www.genenames.org/data/genegroup/#!/group/483>
13. Interleukins | HUGO Gene Nomenclature Committee. [Oct 02 2023]. <https://www.genenames.org/data/genegroup/#!/group/601>
14. Histocompatibility complex | HUGO Gene Nomenclature Committee [Nov 22 2023]. <https://www.genenames.org/data/genegroup/#!/group/588>
15. Takamatsu S, Yoshihara K, Baba T, Shimada M, Yoshida H, Kajiyama H, et al. Prognostic relevance of HRDness gene expression signature in ovarian high-grade serous carcinoma; JGOG3025-TR2 study. *Br J Cancer*. 2023;128(6):1095-104.
16. Altman DG, Lausen B, Sauerbrei W, Schumacher M. Dangers of Using "Optimal" Cutpoints in the Evaluation of Prognostic Factors. *JNCI: Journal of the National Cancer Institute*. 1994;86(11):829-35.