

Supplementary Content

Supplemental Tables

STable 1. Scan Parameters for the 64 mT and 3T MRI scans obtained in this study

STable 2. Pearson correlations of regional measurements from standard versus SynthSR-processed axial 64mT scans with 3T scans

STable 3. Intra-class correlations of regional measurements from standard versus SynthSR-processed axial 64mT scans with 3T scans

STable 4. Pearson correlations of regional measurements from standard axial versus standard multi-orientation 64mT scans with 3T scans

STable 5. Intra-class correlations of regional measurements from standard versus SynthSR-processed axial 64mT scans with 3T scans

STable 6. Correlations of global measurements from SynthSR-processed axial 64mT scans versus SynthSR-processed repeated 64mT scans with 3T scans

STable 7. Correlations of individual-level differences between low- and high-field scans with motion during low-field scans (framewise displacement).

STable 8. Correlations of individual-level differences between low- and high-field scans with participant age.

Supplemental Figures

SFigure 1. Flow chart of participant inclusion and exclusion

SFigure 2. Bland-Altman plots of individual-level global measurements from standard 64mT axial and 3T scans

SFigure 3. Bland-Altman plots of individual-level global measurements from SynthSR-processed 64mT axial and 3T scans

SFigure 4. Comparison of individual-level global measurements across standard 64mT axial scans, standard 64mT repeated multi-orientation scans, and traditional 3T scans

SFigure 5. Comparison of individual-level global measurements across standard 64mT axial scans, SynthSR-processed 64mT repeated multi-orientation scans, and traditional 3T scans

SFigure 6. Comparison of super-resolution approaches in improving correspondence between low-field and high-field-acquired MR images

Supplemental Tables**STable 1.** Scan Parameters for the 64 mT and 3T MRI scans obtained in this study.

Scan Type	Scanner Manufacturer	Scanner Model	Repetition Time (s)	Echo Time (s)	Inversion Time (s)	Flip Angle (deg)	Percent Phase FOV	Slice Thickness (mm)	Slice Resolution (mm)	Total Acquisition Time (s)
T1 64mT Axial	Hyperfine	Swoop	1.5	0.00596	0.3	90	100.00	5.0	1.6 x 1.6	339
T1 64mT Coronal	Hyperfine	Swoop	1.5	0.00559	0.3	90	100.00	5.0	1.6 x 1.6	332
T1 64mT Sagittal	Hyperfine	Swoop	1.5	0.00588	0.3	90	100.00	5.0	1.6 x 1.6	339
T1 3T	Siemens	Prisma	2.5	0.00207	1	8	93.75	0.8	0.8 x 0.8	394
T2 64mT Axial	Hyperfine	Swoop	2.0	0.18240	•	90	100.00	5.0	1.6 x 1.6	173
T2 64mT Coronal	Hyperfine	Swoop	2.0	0.21760	•	90	65.00	5.0	1.6 x 1.6	141
T2 64mT Sagittal	Hyperfine	Swoop	2.0	0.23000	•	90	65.00	5.0	1.6 x 1.6	119
T2 3T	Siemens	Prisma	3.2	0.56400	•	120	93.75	0.8	0.8 x 0.8	357

Note: Four participants received slightly modified T1-weighted 64mT scans (repetition time = 0.88 s, inversion time = 0.354 s). Excluding these participants from the analyses did not significantly change the results.

STable 2. Pearson correlations of regional measurements from standard versus SynthSR-processed axial 64mT scans with 3T scans. Differences between correlation strengths were tested using Steiger's Z. A positive Z-value indicates that SynthSR-processed regions were more strongly correlated to 3T scans than standard regions. Analyses that are statistically significant after correction for multiple comparisons are in bold.

Measurement	Standard Axial 64mT Correlations with 3T			SynthSR-Processed Axial 64mT Correlations with 3T			Steiger		
	<i>r</i>	<i>p</i>	<i>q</i>	<i>r</i>	<i>p</i>	<i>q</i>	<i>z</i>	<i>p</i>	<i>q</i>
left banks of superior temporal sulcus thickness	-0.32	0.007	0.015	-0.07	0.589	0.675	1.81	0.070	0.113
left caudal anterior cingulate thickness	0.01	0.914	0.939	0.25	0.037	0.064	1.59	0.113	0.170
left caudal middle frontal thickness	0.20	0.090	0.140	0.35	0.003	0.007	1.08	0.278	0.367
left cuneus thickness	0.13	0.276	0.365	0.14	0.260	0.348	0.03	0.977	0.984
left entorhinal thickness	-0.02	0.896	0.926	5.0e-03	0.967	0.977	0.13	0.898	0.928
left fusiform thickness	-0.17	0.168	0.239	0.17	0.166	0.237	1.95	0.051	0.086
left inferior parietal thickness	-0.19	0.123	0.183	0.16	0.173	0.245	2.70	0.007	0.014
left inferior temporal thickness	0.09	0.481	0.574	0.18	0.133	0.195	0.56	0.578	0.666
left isthmus cingulate thickness	-0.03	0.829	0.878	0.08	0.536	0.628	0.55	0.580	0.667
left lateral occipital thickness	0.01	0.929	0.949	0.07	0.568	0.657	0.39	0.700	0.768
left lateral orbitofrontal thickness	-0.04	0.771	0.830	0.19	0.110	0.166	1.56	0.118	0.177
left lingual thickness	0.09	0.449	0.542	-0.06	0.614	0.695	-0.83	0.405	0.503
left medial orbitofrontal thickness	-0.34	0.004	0.009	0.18	0.130	0.192	2.85	0.004	0.010
left middle temporal thickness	-0.27	0.022	0.041	0.30	0.013	0.025	3.24	0.001	0.003
left parahippocampal thickness	0.03	0.776	0.836	0.36	0.002	0.005	2.12	0.034	0.060
left paracentral thickness	0.06	0.642	0.720	0.04	0.761	0.821	-0.12	0.903	0.930
left pars triangularis thickness	0.33	0.005	0.011	0.33	0.005	0.010	0.02	0.982	0.987
left pars opercularis thickness	-0.13	0.298	0.389	-0.02	0.844	0.888	0.74	0.460	0.554
left pars orbitalis thickness	-0.21	0.081	0.129	-2.9e-05	1.000	1.000	1.32	0.185	0.259
left pericalcarine thickness	0.09	0.447	0.542	-0.20	0.089	0.138	-1.90	0.058	0.095
left postcentral thickness	0.13	0.299	0.390	0.24	0.045	0.077	0.77	0.442	0.536
left posterior cingulate thickness	-0.18	0.133	0.196	0.24	0.045	0.077	2.46	0.014	0.027
left precentral thickness	0.09	0.484	0.577	0.19	0.121	0.180	0.71	0.479	0.572
left precuneus thickness	0.07	0.550	0.642	0.40	5.74e-04	0.001	2.30	0.022	0.040
left rostral anterior cingulate thickness	-0.30	0.010	0.021	-0.02	0.891	0.921	2.04	0.042	0.072
left rostral middle frontal thickness	-0.01	0.915	0.939	0.09	0.467	0.561	0.81	0.419	0.515
left superior frontal thickness	0.02	0.843	0.888	0.36	0.002	0.005	2.78	0.005	0.012
left superior parietal thickness	0.04	0.722	0.787	0.11	0.363	0.461	0.43	0.670	0.742
left superior temporal thickness	-0.24	0.049	0.082	0.31	0.009	0.019	3.10	0.002	0.005

left supramarginal thickness	0.02	0.859	0.898	0.41	4.39e-04	0.001	2.44	0.015	0.028
left frontal pole thickness	-0.23	0.058	0.095	-0.35	0.003	0.007	-0.75	0.453	0.547
left temporal pole thickness	-0.24	0.048	0.081	0.14	0.257	0.345	2.18	0.029	0.052
left transverse temporal thickness	-0.30	0.012	0.023	0.27	0.024	0.043	3.46	5.49e-04	0.001
left insula thickness	-0.07	0.539	0.631	-0.10	0.406	0.503	-0.18	0.861	0.899
right banks of superior temporal sulcus thickness	-0.13	0.290	0.381	0.10	0.392	0.491	1.71	0.087	0.136
right caudal anterior cingulate thickness	-0.16	0.174	0.247	0.01	0.931	0.949	0.97	0.333	0.427
right caudal middle frontal thickness	0.05	0.656	0.732	0.29	0.015	0.029	1.46	0.145	0.210
right cuneus thickness	0.10	0.428	0.523	0.14	0.231	0.315	0.28	0.780	0.839
right entorhinal thickness	-0.23	0.057	0.094	-0.05	0.661	0.736	1.01	0.313	0.405
right fusiform thickness	-0.21	0.088	0.137	-0.35	0.003	0.007	-0.93	0.350	0.447
right inferior parietal thickness	-0.21	0.077	0.123	0.06	0.649	0.725	2.02	0.043	0.074
right inferior temporal thickness	-0.14	0.256	0.344	-2.7e-03	0.982	0.987	0.88	0.376	0.475
right isthmus cingulate thickness	-0.02	0.871	0.907	0.06	0.608	0.690	0.49	0.626	0.706
right lateral occipital thickness	0.18	0.128	0.189	0.06	0.632	0.712	-1.02	0.309	0.400
right lateral orbitofrontal thickness	-0.05	0.710	0.776	0.09	0.474	0.568	0.77	0.441	0.536
right lingual thickness	-0.04	0.756	0.817	0.06	0.630	0.710	0.56	0.574	0.662
right medial orbitofrontal thickness	-0.35	0.003	0.006	-0.05	0.686	0.756	2.07	0.039	0.068
right middle temporal thickness	-0.37	0.002	0.004	0.17	0.164	0.234	3.37	7.46e-04	0.002
right parahippocampal thickness	0.21	0.077	0.122	0.40	6.56e-04	0.002	1.13	0.259	0.347
right paracentral thickness	0.17	0.171	0.243	0.09	0.459	0.553	-0.51	0.608	0.690
right pars triangularis thickness	0.21	0.087	0.136	0.20	0.105	0.159	-0.08	0.938	0.955
right pars opercularis thickness	-0.05	0.683	0.754	0.28	0.021	0.039	2.01	0.045	0.076
right pars orbitalis thickness	3.2e-03	0.979	0.986	0.25	0.036	0.063	1.83	0.067	0.108
right pericalcarine thickness	-0.03	0.808	0.861	-7.4e-03	0.951	0.965	0.15	0.883	0.916
right postcentral thickness	0.15	0.229	0.313	0.27	0.026	0.047	0.90	0.366	0.463
right posterior cingulate thickness	-0.11	0.362	0.460	0.24	0.043	0.074	2.39	0.017	0.032
right precentral thickness	0.16	0.187	0.261	-0.06	0.619	0.699	-1.71	0.087	0.136
right precuneus thickness	0.07	0.539	0.631	0.20	0.093	0.143	0.91	0.361	0.459
right rostral anterior cingulate thickness	-0.37	0.001	0.003	-0.13	0.278	0.367	1.60	0.111	0.167
right rostral middle frontal thickness	-0.19	0.113	0.170	0.03	0.825	0.874	1.46	0.145	0.211
right superior frontal thickness	0.16	0.193	0.268	0.11	0.374	0.473	-0.36	0.722	0.787
right superior parietal thickness	0.12	0.314	0.405	0.08	0.525	0.618	-0.34	0.735	0.800
right superior temporal thickness	-0.18	0.144	0.209	0.43	2.45e-04	6.69e-04	4.08	4.42e-05	1.35e-04
right supramarginal thickness	0.19	0.106	0.161	0.39	7.92e-04	0.002	1.58	0.114	0.172

right frontal pole thickness	-0.10	0.406	0.503	-0.14	0.263	0.351	-0.21	0.836	0.882
right temporal pole thickness	0.17	0.168	0.239	0.22	0.062	0.102	0.37	0.711	0.776
right transverse temporal thickness	-0.03	0.814	0.866	0.06	0.594	0.679	0.59	0.554	0.646
right insula thickness	-0.07	0.589	0.674	0.17	0.170	0.241	1.35	0.178	0.251
left banks of superior temporal sulcus area	0.34	0.003	0.008	0.73	7.58e-13	6.82e-12	3.95	7.77e-05	2.28e-04
left caudal anterior cingulate area	0.35	0.003	0.007	0.48	2.46e-05	7.81e-05	1.62	0.106	0.161
left caudal middle frontal area	0.31	0.009	0.018	0.73	5.25e-13	4.80e-12	4.12	3.78e-05	1.17e-04
left cuneus area	0.41	4.66e-04	0.001	0.64	1.98e-09	1.14e-08	1.96	0.050	0.084
left entorhinal area	-0.06	0.607	0.690	0.41	4.01e-04	0.001	2.69	0.007	0.015
left fusiform area	0.31	0.009	0.018	0.65	1.61e-09	9.45e-09	2.54	0.011	0.022
left inferior parietal area	0.59	1.04e-07	4.85e-07	0.84	1.27e-19	3.75e-18	3.63	2.79e-04	7.52e-04
left inferior temporal area	0.43	1.98e-04	5.47e-04	0.74	2.58e-13	2.48e-12	3.07	0.002	0.005
left isthmus cingulate area	0.34	0.004	0.009	0.51	5.65e-06	2.02e-05	1.28	0.202	0.279
left lateral occipital area	0.33	0.005	0.011	0.52	4.68e-06	1.70e-05	1.38	0.167	0.237
left lateral orbitofrontal area	0.51	6.58e-06	2.33e-05	0.67	1.51e-10	1.01e-09	1.82	0.068	0.111
left lingual area	0.24	0.046	0.078	0.59	9.68e-08	4.53e-07	2.52	0.012	0.023
left medial orbitofrontal area	0.49	1.68e-05	5.53e-05	0.51	6.85e-06	2.41e-05	0.19	0.853	0.895
left middle temporal area	0.46	6.52e-05	1.93e-04	0.75	1.03e-13	1.04e-12	3.09	0.002	0.005
left parahippocampal area	-0.23	0.060	0.098	0.24	0.048	0.081	2.59	0.009	0.019
left paracentral area	0.34	0.003	0.008	0.76	1.59e-14	1.77e-13	3.95	7.94e-05	2.32e-04
left pars triangularis area	0.40	6.91e-04	0.002	0.65	1.11e-09	6.68e-09	2.55	0.011	0.022
left pars opercularis area	0.45	8.10e-05	2.37e-04	0.49	1.66e-05	5.46e-05	0.31	0.760	0.820
left pars orbitalis area	0.60	4.50e-08	2.22e-07	0.63	4.27e-09	2.37e-08	0.38	0.704	0.771
left pericalcarine area	0.33	0.005	0.011	0.65	1.12e-09	6.73e-09	2.81	0.005	0.011
left postcentral area	0.21	0.088	0.137	0.70	1.57e-11	1.19e-10	4.25	2.12e-05	6.80e-05
left posterior cingulate area	0.30	0.011	0.022	0.57	2.02e-07	9.01e-07	2.45	0.014	0.027
left precentral area	0.36	0.002	0.006	0.83	3.20e-19	8.40e-18	5.70	1.22e-08	6.43e-08
left precuneus area	0.32	0.007	0.015	0.72	1.47e-12	1.29e-11	3.55	3.88e-04	0.001
left rostral anterior cingulate area	0.44	1.35e-04	3.84e-04	0.60	2.96e-08	1.48e-07	1.97	0.048	0.082
left rostral middle frontal area	0.61	2.61e-08	1.31e-07	0.73	5.50e-13	4.99e-12	2.09	0.037	0.064
left superior frontal area	0.53	1.85e-06	7.08e-06	0.77	3.45e-15	4.30e-14	3.46	5.38e-04	0.001
left superior parietal area	0.37	0.002	0.004	0.67	2.72e-10	1.77e-09	2.60	0.009	0.019
left superior temporal area	0.29	0.015	0.029	0.79	3.02e-16	4.64e-15	5.45	5.08e-08	2.47e-07
left supramarginal area	0.52	3.70e-06	1.36e-05	0.78	1.67e-15	2.27e-14	3.16	0.002	0.004

left frontal pole area	0.25	0.038	0.066	0.27	0.023	0.043	0.14	0.886	0.918
left temporal pole area	-0.10	0.428	0.523	0.14	0.253	0.341	1.34	0.179	0.252
left transverse temporal area	0.16	0.192	0.267	0.73	4.45e-13	4.13e-12	4.64	3.56e-06	1.31e-05
left insula area	0.28	0.018	0.033	0.77	8.40e-15	9.89e-14	4.57	4.94e-06	1.78e-05
right banks of superior temporal sulcus area	0.41	3.90e-04	0.001	0.69	5.38e-11	3.70e-10	2.60	0.009	0.019
right caudal anterior cingulate area	0.62	9.78e-09	5.24e-08	0.71	6.36e-12	5.04e-11	1.32	0.186	0.260
right caudal middle frontal area	0.44	1.14e-04	3.28e-04	0.60	4.47e-08	2.21e-07	1.59	0.112	0.169
right cuneus area	0.18	0.141	0.206	0.51	5.56e-06	1.99e-05	2.81	0.005	0.011
right entorhinal area	-0.16	0.183	0.257	0.15	0.210	0.288	1.98	0.048	0.081
right fusiform area	0.44	1.17e-04	3.36e-04	0.77	3.84e-15	4.76e-14	3.48	4.96e-04	0.001
right inferior parietal area	0.53	2.26e-06	8.58e-06	0.74	3.22e-13	3.06e-12	2.57	0.010	0.020
right inferior temporal area	0.55	8.35e-07	3.39e-06	0.77	5.89e-15	7.05e-14	2.76	0.006	0.012
right isthmus cingulate area	0.19	0.122	0.181	0.72	1.59e-12	1.38e-11	4.74	2.09e-06	7.97e-06
right lateral occipital area	0.54	1.44e-06	5.62e-06	0.65	1.26e-09	7.49e-09	1.13	0.257	0.344
right lateral orbitofrontal area	0.51	7.31e-06	2.56e-05	0.54	1.19e-06	4.72e-06	0.35	0.725	0.790
right lingual area	0.10	0.409	0.505	0.60	5.27e-08	2.56e-07	4.33	1.46e-05	4.86e-05
right medial orbitofrontal area	0.43	2.03e-04	5.58e-04	0.45	8.81e-05	2.57e-04	0.17	0.868	0.904
right middle temporal area	0.45	9.29e-05	2.69e-04	0.76	3.22e-14	3.45e-13	3.59	3.34e-04	8.93e-04
right parahippocampal area	0.03	0.814	0.866	0.28	0.018	0.035	1.53	0.126	0.187
right paracentral area	0.36	0.002	0.005	0.62	1.45e-08	7.60e-08	2.44	0.015	0.028
right pars triangularis area	0.42	3.09e-04	8.29e-04	0.75	6.47e-14	6.74e-13	3.97	7.26e-05	2.14e-04
right pars opercularis area	0.48	2.23e-05	7.13e-05	0.55	1.03e-06	4.11e-06	0.58	0.561	0.651
right pars orbitalis area	0.37	0.001	0.003	0.64	2.70e-09	1.52e-08	2.75	0.006	0.013
right pericalcarine area	0.44	1.53e-04	4.31e-04	0.68	8.42e-11	5.69e-10	2.63	0.009	0.017
right postcentral area	0.44	1.27e-04	3.64e-04	0.69	3.44e-11	2.43e-10	2.84	0.004	0.010
right posterior cingulate area	0.32	0.007	0.014	0.70	2.11e-11	1.57e-10	4.18	2.88e-05	9.02e-05
right precentral area	0.48	2.62e-05	8.27e-05	0.63	6.76e-09	3.69e-08	1.51	0.132	0.193
right precuneus area	0.43	1.77e-04	4.92e-04	0.70	1.61e-11	1.21e-10	2.58	0.010	0.020
right rostral anterior cingulate area	0.57	2.66e-07	1.17e-06	0.78	1.14e-15	1.57e-14	3.20	0.001	0.003
right rostral middle frontal area	0.49	1.97e-05	6.38e-05	0.64	1.86e-09	1.07e-08	1.78	0.075	0.120
right superior frontal area	0.56	4.54e-07	1.92e-06	0.69	3.90e-11	2.74e-10	1.82	0.069	0.111
right superior parietal area	0.22	0.062	0.102	0.61	1.72e-08	8.90e-08	3.21	0.001	0.003
right superior temporal area	0.50	8.61e-06	2.98e-05	0.79	2.42e-16	3.83e-15	3.72	1.99e-04	5.48e-04
right supramarginal area	0.28	0.021	0.039	0.66	5.42e-10	3.39e-09	3.66	2.49e-04	6.80e-04
right frontal pole area	0.26	0.027	0.049	0.14	0.252	0.340	-0.85	0.396	0.495

right temporal pole area	7.4e-03	0.951	0.965	0.07	0.578	0.666	0.36	0.717	0.783
right transverse temporal area	0.26	0.032	0.057	0.59	6.46e-08	3.08e-07	2.71	0.007	0.014
right insula area	0.22	0.066	0.107	0.67	2.15e-10	1.41e-09	3.55	3.84e-04	0.001
left banks of superior temporal sulcus volume	0.26	0.033	0.059	0.67	2.73e-10	1.77e-09	4.31	1.60e-05	5.28e-05
left caudal anterior cingulate volume	0.30	0.011	0.021	0.58	1.43e-07	6.51e-07	3.48	5.03e-04	0.001
left caudal middle frontal volume	0.40	6.72e-04	0.002	0.73	1.24e-12	1.08e-11	3.29	9.99e-04	0.002
left cuneus volume	0.31	0.010	0.020	0.66	6.62e-10	4.10e-09	2.90	0.004	0.008
left entorhinal volume	-0.10	0.405	0.503	0.39	9.33e-04	0.002	2.74	0.006	0.013
left fusiform volume	0.31	0.009	0.018	0.66	5.61e-10	3.50e-09	2.71	0.007	0.014
left inferior parietal volume	0.57	3.03e-07	1.31e-06	0.85	7.18e-21	2.95e-19	4.18	2.89e-05	9.05e-05
left inferior temporal volume	0.46	6.67e-05	1.97e-04	0.78	2.76e-15	3.49e-14	3.50	4.70e-04	0.001
left isthmus cingulate volume	0.31	0.010	0.020	0.52	4.48e-06	1.64e-05	1.52	0.130	0.191
left lateral occipital volume	0.39	7.49e-04	0.002	0.55	9.78e-07	3.94e-06	1.31	0.189	0.263
left lateral orbitofrontal volume	0.48	2.98e-05	9.31e-05	0.69	5.83e-11	3.96e-10	2.18	0.029	0.052
left lingual volume	0.12	0.312	0.403	0.65	8.48e-10	5.14e-09	4.19	2.84e-05	8.93e-05
left medial orbitofrontal volume	0.30	0.012	0.024	0.41	3.75e-04	9.91e-04	0.94	0.348	0.445
left middle temporal volume	0.31	0.010	0.020	0.71	6.56e-12	5.18e-11	3.73	1.92e-04	5.31e-04
left parahippocampal volume	-0.04	0.721	0.787	0.19	0.109	0.165	1.40	0.163	0.233
left paracentral volume	0.32	0.006	0.013	0.65	1.22e-09	7.26e-09	2.75	0.006	0.013
left pars triangularis volume	0.47	4.51e-05	1.37e-04	0.65	8.33e-10	5.07e-09	2.26	0.024	0.044
left pars opercularis volume	0.35	0.003	0.006	0.43	1.92e-04	5.31e-04	0.63	0.528	0.620
left pars orbitalis volume	0.54	1.27e-06	4.99e-06	0.58	1.13e-07	5.22e-07	0.42	0.673	0.744
left pericalcarine volume	0.32	0.007	0.014	0.56	3.72e-07	1.60e-06	2.04	0.041	0.071
left postcentral volume	0.23	0.053	0.088	0.68	7.81e-11	5.30e-10	3.79	1.50e-04	4.24e-04
left posterior cingulate volume	0.27	0.023	0.042	0.55	7.17e-07	2.94e-06	2.49	0.013	0.025
left precentral volume	0.36	0.002	0.006	0.79	3.11e-16	4.74e-15	5.42	6.11e-08	2.93e-07
left precuneus volume	0.29	0.015	0.029	0.75	6.46e-14	6.74e-13	4.29	1.76e-05	5.76e-05
left rostral anterior cingulate volume	0.39	8.49e-04	0.002	0.52	4.98e-06	1.79e-05	1.31	0.189	0.263
left rostral middle frontal volume	0.51	7.43e-06	2.59e-05	0.60	5.01e-08	2.45e-07	1.08	0.280	0.370
left superior frontal volume	0.38	0.001	0.003	0.70	1.22e-11	9.42e-11	4.15	3.36e-05	1.04e-04
left superior parietal volume	0.47	4.29e-05	1.31e-04	0.64	1.76e-09	1.03e-08	1.57	0.117	0.174
left superior temporal volume	0.21	0.087	0.136	0.80	1.05e-16	1.74e-15	6.18	6.46e-10	4.01e-09
left supramarginal volume	0.42	2.70e-04	7.31e-04	0.75	4.94e-14	5.22e-13	3.66	2.51e-04	6.85e-04
left frontal pole volume	-0.04	0.754	0.816	-0.11	0.371	0.469	-0.48	0.632	0.712

left temporal pole volume	-0.08	0.495	0.589	0.08	0.528	0.620	0.85	0.394	0.492
left transverse temporal volume	0.11	0.380	0.479	0.68	8.82e-11	5.95e-10	4.39	1.14e-05	3.89e-05
left insula volume	0.42	2.65e-04	7.20e-04	0.73	4.72e-13	4.35e-12	3.31	9.48e-04	0.002
right banks of superior temporal sulcus volume	0.43	1.89e-04	5.23e-04	0.61	1.84e-08	9.50e-08	1.64	0.101	0.155
right caudal anterior cingulate volume	0.64	2.45e-09	1.39e-08	0.74	4.18e-13	3.89e-12	1.39	0.166	0.237
right caudal middle frontal volume	0.47	4.19e-05	1.28e-04	0.58	1.40e-07	6.37e-07	1.11	0.268	0.356
right cuneus volume	0.16	0.179	0.252	0.51	7.31e-06	2.56e-05	2.80	0.005	0.011
right entorhinal volume	-0.24	0.042	0.072	0.22	0.067	0.108	2.88	0.004	0.009
right fusiform volume	0.32	0.007	0.014	0.72	1.56e-12	1.36e-11	3.63	2.88e-04	7.76e-04
right inferior parietal volume	0.48	2.84e-05	8.93e-05	0.73	8.85e-13	7.87e-12	3.20	0.001	0.003
right inferior temporal volume	0.53	2.75e-06	1.03e-05	0.76	1.43e-14	1.62e-13	2.86	0.004	0.009
right isthmus cingulate volume	0.19	0.112	0.169	0.69	3.15e-11	2.24e-10	4.42	9.72e-06	3.34e-05
right lateral occipital volume	0.57	3.13e-07	1.36e-06	0.62	1.03e-08	5.46e-08	0.61	0.542	0.634
right lateral orbitofrontal volume	0.49	1.86e-05	6.06e-05	0.60	4.26e-08	2.11e-07	1.13	0.257	0.344
right lingual volume	0.04	0.753	0.815	0.64	1.78e-09	1.04e-08	5.43	5.61e-08	2.70e-07
right medial orbitofrontal volume	0.28	0.020	0.038	0.32	0.008	0.016	0.29	0.774	0.834
right middle temporal volume	0.38	0.001	0.003	0.69	3.21e-11	2.28e-10	3.28	0.001	0.003
right parahippocampal volume	0.12	0.309	0.400	0.03	0.787	0.844	-0.55	0.583	0.670
right paracentral volume	0.49	1.46e-05	4.86e-05	0.55	8.02e-07	3.27e-06	0.58	0.564	0.654
right pars triangularis volume	0.44	1.41e-04	3.98e-04	0.64	2.07e-09	1.19e-08	2.29	0.022	0.041
right pars opercularis volume	0.48	3.10e-05	9.63e-05	0.55	7.12e-07	2.93e-06	0.74	0.457	0.551
right pars orbitalis volume	0.38	0.001	0.003	0.59	5.76e-08	2.77e-07	2.33	0.020	0.037
right pericalcarine volume	0.32	0.006	0.013	0.61	1.63e-08	8.45e-08	2.73	0.006	0.013
right postcentral volume	0.50	1.04e-05	3.53e-05	0.71	4.10e-12	3.34e-11	2.64	0.008	0.017
right posterior cingulate volume	0.37	0.002	0.004	0.67	2.15e-10	1.41e-09	3.31	9.38e-04	0.002
right precentral volume	0.50	1.12e-05	3.80e-05	0.61	1.49e-08	7.78e-08	1.34	0.180	0.252
right precuneus volume	0.31	0.008	0.017	0.70	2.44e-11	1.77e-10	3.60	3.18e-04	8.53e-04
right rostral anterior cingulate volume	0.53	2.12e-06	8.07e-06	0.71	5.60e-12	4.47e-11	2.11	0.035	0.061
right rostral middle frontal volume	0.31	0.008	0.016	0.54	1.69e-06	6.49e-06	2.54	0.011	0.022
right superior frontal volume	0.47	3.63e-05	1.12e-04	0.65	1.05e-09	6.34e-09	2.31	0.021	0.039
right superior parietal volume	0.28	0.020	0.037	0.59	8.63e-08	4.06e-07	2.71	0.007	0.014
right superior temporal volume	0.53	2.03e-06	7.76e-06	0.79	8.11e-16	1.13e-14	3.42	6.23e-04	0.002
right supramarginal volume	0.39	9.04e-04	0.002	0.76	1.37e-14	1.56e-13	4.62	3.78e-06	1.39e-05
right frontal pole volume	0.03	0.791	0.847	-0.05	0.658	0.734	-0.53	0.595	0.679
right temporal pole volume	0.11	0.365	0.463	0.08	0.511	0.604	-0.18	0.861	0.899

right transverse temporal volume	0.23	0.055	0.091	0.51	5.43e-06	1.95e-05	2.33	0.020	0.037
right insula volume	0.23	0.052	0.087	0.72	2.38e-12	2.00e-11	4.06	4.91e-05	1.49e-04
left lateral ventricle subcortical volume	0.96	9.47e-38	2.58e-35	0.98	9.25e-52	5.04e-49	4.43	9.34e-06	3.22e-05
left inf lat vent subcortical volume	0.61	1.48e-08	7.71e-08	0.57	2.08e-07	9.23e-07	-0.40	0.686	0.756
left cerebellum white matter subcortical volume	0.50	9.03e-06	3.12e-05	0.39	8.08e-04	0.002	-0.86	0.391	0.491
left cerebellum cortex subcortical volume	0.74	3.75e-13	3.53e-12	0.88	1.06e-23	7.41e-22	3.44	5.75e-04	0.001
left thalamus proper subcortical volume	0.41	5.04e-04	0.001	0.79	2.92e-16	4.50e-15	4.01	5.96e-05	1.77e-04
left caudate subcortical volume	0.49	1.43e-05	4.79e-05	0.71	5.75e-12	4.57e-11	2.91	0.004	0.008
left putamen subcortical volume	0.38	0.001	0.003	0.57	2.89e-07	1.26e-06	1.94	0.052	0.087
left pallidum subcortical volume	0.27	0.025	0.046	0.51	6.62e-06	2.34e-05	1.94	0.053	0.088
3rd ventricle subcortical volume	0.72	1.65e-12	1.43e-11	0.90	7.19e-26	6.80e-24	4.21	2.50e-05	7.92e-05
4th ventricle subcortical volume	0.62	7.64e-09	4.15e-08	0.85	1.33e-20	5.07e-19	3.79	1.53e-04	4.31e-04
brain stem subcortical volume	0.79	3.29e-16	4.97e-15	0.90	7.33e-27	7.60e-25	3.34	8.32e-04	0.002
left hippocampus subcortical volume	0.25	0.038	0.067	0.51	6.57e-06	2.33e-05	1.90	0.058	0.095
left amygdala subcortical volume	0.34	0.004	0.009	0.48	2.92e-05	9.12e-05	1.18	0.239	0.325
csf subcortical volume	0.59	7.99e-08	3.78e-07	0.77	5.44e-15	6.59e-14	3.48	4.98e-04	0.001
left accumbens area subcortical volume	0.01	0.932	0.950	0.24	0.044	0.075	1.39	0.165	0.236
left ventral diencephalon subcortical volume	0.49	1.68e-05	5.52e-05	0.69	5.19e-11	3.58e-10	2.17	0.030	0.053
left vessel subcortical volume	0.02	0.853	0.895	0.40	6.24e-04	0.002	2.19	0.028	0.051
left choroid plexus subcortical volume	0.52	3.10e-06	1.16e-05	0.74	3.07e-13	2.93e-12	3.43	5.96e-04	0.002
right lateral ventricle subcortical volume	0.92	3.67e-29	6.67e-27	0.98	3.13e-47	1.37e-44	5.15	2.64e-07	1.16e-06
right inf lat vent subcortical volume	0.57	3.16e-07	1.37e-06	0.56	3.57e-07	1.54e-06	-0.02	0.986	0.990
cerebellum white matter subcortical volume	0.67	1.51e-10	1.01e-09	0.52	3.30e-06	1.22e-05	-1.67	0.096	0.148
cerebellum cortex subcortical volume	0.69	4.46e-11	3.11e-10	0.86	8.15e-22	4.44e-20	3.37	7.64e-04	0.002
right thalamus proper subcortical volume	0.30	0.013	0.025	0.75	1.25e-13	1.24e-12	4.44	8.96e-06	3.10e-05
right caudate subcortical volume	0.25	0.040	0.070	0.48	2.28e-05	7.27e-05	2.47	0.013	0.026
right putamen subcortical volume	0.29	0.014	0.027	0.71	6.78e-12	5.33e-11	3.65	2.65e-04	7.21e-04
right pallidum subcortical volume	0.24	0.043	0.074	0.62	1.12e-08	5.94e-08	2.87	0.004	0.009
right hippocampus subcortical volume	0.18	0.128	0.189	0.56	4.18e-07	1.78e-06	3.00	0.003	0.006
right amygdala subcortical volume	0.24	0.048	0.081	0.61	2.04e-08	1.04e-07	3.26	0.001	0.003
right accumbens area subcortical volume	0.19	0.122	0.181	0.41	4.20e-04	0.001	1.44	0.149	0.215
right ventral diencephalon subcortical volume	0.59	1.05e-07	4.86e-07	0.77	1.16e-14	1.34e-13	2.47	0.013	0.026
right vessel subcortical volume	-0.05	0.666	0.740	0.11	0.359	0.456	0.98	0.328	0.422
right choroid plexus subcortical volume	0.50	1.01e-05	3.45e-05	0.49	2.02e-05	6.52e-05	-0.21	0.833	0.880

optic chiasm subcortical volume	0.02	0.891	0.921	0.24	0.048	0.081	1.31	0.190	0.264
corpus callosum posterior subcortical volume	0.44	1.58e-04	4.42e-04	0.77	9.33e-15	1.09e-13	4.28	1.86e-05	6.06e-05
corpus callosum mid posterior subcortical volume	0.17	0.152	0.219	0.55	7.23e-07	2.96e-06	3.87	1.10e-04	3.16e-04
corpus callosum central subcortical volume	0.31	0.009	0.018	0.52	4.90e-06	1.78e-05	1.97	0.049	0.082
corpus callosum mid anterior subcortical volume	0.34	0.004	0.010	0.56	4.51e-07	1.92e-06	2.63	0.008	0.017
corpus callosum anterior subcortical volume	0.47	4.15e-05	1.27e-04	0.84	4.46e-20	1.45e-18	5.15	2.66e-07	1.17e-06

STable 3. Intra-class correlations (ICCs) of regional measurements from standard versus SynthSR-processed axial 64mT scans with 3T scans. Differences between ICC strengths were tested using Steiger's Z. A positive Z-value indicates that SynthSR-processed regions were more strongly correlated to 3T scans than standard regions. Analyses that are statistically significant after correction for multiple comparisons are in bold.

Measurement	Standard Axial 64mT ICC with 3T			SynthSR-Processed Axial 64mT ICC with 3T			Steiger		
	ICC	p	q	ICC	p	q	z	p	q
left banks of superior temporal sulcus thickness	-0.20	0.952	0.977	-0.06	0.684	0.774	0.96	0.336	0.443
left caudal anterior cingulate thickness	0.01	0.462	0.572	0.23	0.028	0.051	1.44	0.149	0.224
left caudal middle frontal thickness	0.17	0.079	0.130	0.35	0.001	0.003	1.29	0.199	0.286
left cuneus thickness	0.09	0.239	0.336	0.14	0.129	0.200	0.32	0.748	0.827
left entorhinal thickness	-5.2e-03	0.517	0.621	4.4e-03	0.485	0.592	0.06	0.954	0.977
left fusiform thickness	-0.12	0.847	0.907	0.16	0.092	0.149	1.65	0.100	0.160
left inferior parietal thickness	-0.15	0.898	0.941	0.16	0.085	0.139	2.29	0.022	0.041
left inferior temporal thickness	0.07	0.293	0.396	0.16	0.091	0.147	0.55	0.584	0.683
left isthmus cingulate thickness	-0.02	0.577	0.678	0.08	0.267	0.368	0.54	0.589	0.687
left lateral occipital thickness	7.3e-03	0.476	0.584	0.06	0.300	0.402	0.36	0.718	0.803
left lateral orbitofrontal thickness	-0.03	0.609	0.705	0.19	0.056	0.095	1.53	0.126	0.196
left lingual thickness	0.07	0.274	0.376	-0.06	0.684	0.774	-0.71	0.477	0.585
left medial orbitofrontal thickness	-0.29	0.992	0.996	0.17	0.073	0.122	2.51	0.012	0.024
left middle temporal thickness	-0.19	0.940	0.972	0.29	0.006	0.013	2.76	0.006	0.012
left parahippocampal thickness	0.01	0.454	0.565	0.35	0.001	0.003	2.11	0.035	0.062
left paracentral thickness	0.05	0.346	0.454	0.04	0.380	0.491	-0.07	0.946	0.974
left pars triangularis thickness	0.29	0.007	0.016	0.33	0.002	0.005	0.32	0.748	0.827
left pars opercularis thickness	-0.12	0.842	0.903	-0.02	0.578	0.678	0.70	0.485	0.591
left pars orbitalis thickness	-0.19	0.943	0.973	-2.8e-05	0.500	0.604	1.19	0.235	0.332
left pericalcarine thickness	0.07	0.274	0.376	-0.20	0.953	0.977	-1.72	0.085	0.139
left postcentral thickness	0.12	0.151	0.226	0.22	0.034	0.061	0.62	0.538	0.639
left posterior cingulate thickness	-0.13	0.863	0.913	0.23	0.026	0.047	2.12	0.034	0.061
left precentral thickness	0.08	0.244	0.342	0.19	0.061	0.103	0.70	0.485	0.591
left precuneus thickness	0.06	0.305	0.408	0.40	2.87e-04	7.85e-04	2.28	0.023	0.042
left rostral anterior cingulate thickness	-0.24	0.978	0.991	-0.02	0.552	0.655	1.54	0.124	0.192
left rostral middle frontal thickness	-0.01	0.542	0.643	0.09	0.232	0.327	0.79	0.428	0.539
left superior frontal thickness	0.02	0.421	0.534	0.36	0.001	0.003	2.68	0.007	0.015
left superior parietal thickness	0.04	0.373	0.485	0.11	0.184	0.268	0.43	0.666	0.757
left superior temporal thickness	-0.20	0.952	0.977	0.31	0.004	0.010	2.90	0.004	0.008
left supramarginal thickness	0.02	0.438	0.550	0.41	2.07e-04	5.82e-04	2.44	0.015	0.029

left frontal pole thickness	-0.22	0.968	0.986	-0.33	0.998	0.998	-0.71	0.478	0.586
left temporal pole thickness	-0.10	0.799	0.869	0.13	0.136	0.208	1.35	0.177	0.259
left transverse temporal thickness	-0.25	0.980	0.993	0.27	0.012	0.024	3.08	0.002	0.005
left insula thickness	-0.06	0.699	0.785	-0.09	0.775	0.851	-0.19	0.852	0.908
right banks of superior temporal sulcus thickness	-0.10	0.789	0.862	0.10	0.196	0.282	1.39	0.163	0.242
right caudal anterior cingulate thickness	-0.13	0.859	0.912	8.8e-03	0.471	0.581	0.76	0.444	0.556
right caudal middle frontal thickness	0.05	0.344	0.452	0.29	0.007	0.015	1.49	0.137	0.209
right cuneus thickness	0.07	0.277	0.379	0.14	0.122	0.190	0.39	0.694	0.782
right entorhinal thickness	-0.10	0.803	0.872	-0.05	0.665	0.757	0.29	0.768	0.846
right fusiform thickness	-0.14	0.882	0.925	-0.32	0.997	0.997	-1.14	0.256	0.355
right inferior parietal thickness	-0.17	0.923	0.960	0.06	0.323	0.428	1.60	0.109	0.173
right inferior temporal thickness	-0.10	0.801	0.871	-2.7e-03	0.509	0.614	0.63	0.528	0.630
right isthmus cingulate thickness	-0.01	0.537	0.639	0.06	0.305	0.408	0.43	0.667	0.758
right lateral occipital thickness	0.13	0.139	0.212	0.06	0.323	0.428	-0.57	0.567	0.671
right lateral orbitofrontal thickness	-0.04	0.637	0.731	0.09	0.237	0.334	0.75	0.454	0.565
right lingual thickness	-0.03	0.610	0.705	0.06	0.324	0.428	0.52	0.603	0.700
right medial orbitofrontal thickness	-0.31	0.996	0.997	-0.05	0.651	0.745	1.78	0.075	0.124
right middle temporal thickness	-0.27	0.988	0.995	0.17	0.082	0.134	2.65	0.008	0.017
right parahippocampal thickness	0.08	0.252	0.350	0.38	5.29e-04	0.001	1.81	0.071	0.119
right paracentral thickness	0.14	0.125	0.194	0.09	0.232	0.327	-0.33	0.745	0.825
right pars triangularis thickness	0.19	0.059	0.100	0.20	0.051	0.089	0.06	0.954	0.977
right pars opercularis thickness	-0.04	0.638	0.732	0.27	0.011	0.022	1.94	0.053	0.091
right pars orbitalis thickness	2.8e-03	0.491	0.597	0.24	0.020	0.038	1.76	0.078	0.129
right pericalcarine thickness	-0.02	0.572	0.674	-7.4e-03	0.524	0.627	0.09	0.926	0.962
right postcentral thickness	0.15	0.113	0.177	0.24	0.020	0.039	0.71	0.475	0.584
right posterior cingulate thickness	-0.07	0.731	0.815	0.23	0.028	0.051	1.99	0.047	0.082
right precentral thickness	0.16	0.092	0.148	-0.05	0.673	0.763	-1.60	0.110	0.174
right precuneus thickness	0.06	0.299	0.402	0.20	0.047	0.082	0.93	0.354	0.463
right rostral anterior cingulate thickness	-0.30	0.994	0.997	-0.12	0.835	0.897	1.17	0.243	0.341
right rostral middle frontal thickness	-0.18	0.932	0.966	0.03	0.413	0.526	1.36	0.173	0.255
right superior frontal thickness	0.16	0.098	0.157	0.11	0.186	0.269	-0.34	0.734	0.817
right superior parietal thickness	0.10	0.200	0.288	0.08	0.265	0.366	-0.18	0.858	0.911
right superior temporal thickness	-0.17	0.922	0.959	0.43	1.10e-04	3.22e-04	4.02	5.82e-05	1.79e-04
right supramarginal thickness	0.18	0.062	0.105	0.39	3.63e-04	9.73e-04	1.63	0.104	0.165

right frontal pole thickness	-0.09	0.780	0.856	-0.12	0.848	0.907	-0.18	0.856	0.911
right temporal pole thickness	0.10	0.213	0.304	0.22	0.031	0.056	0.79	0.430	0.541
right transverse temporal thickness	-0.02	0.572	0.674	0.06	0.296	0.399	0.54	0.590	0.688
right insula thickness	-0.06	0.678	0.768	0.15	0.104	0.166	1.20	0.230	0.325
left banks of superior temporal sulcus area	0.34	0.002	0.004	0.73	3.00e-13	2.91e-12	3.94	8.19e-05	2.46e-04
left caudal anterior cingulate area	0.28	0.008	0.017	0.44	7.06e-05	2.14e-04	1.78	0.075	0.124
left caudal middle frontal area	0.29	0.007	0.015	0.73	1.89e-13	1.88e-12	4.19	2.76e-05	9.10e-05
left cuneus area	0.41	2.15e-04	6.02e-04	0.62	2.91e-09	1.69e-08	1.78	0.075	0.124
left entorhinal area	-0.06	0.692	0.781	0.30	0.006	0.013	2.00	0.046	0.081
left fusiform area	0.31	0.005	0.010	0.64	1.02e-09	6.21e-09	2.50	0.012	0.025
left inferior parietal area	0.57	1.03e-07	4.99e-07	0.84	3.69e-20	1.22e-18	3.75	1.79e-04	5.09e-04
left inferior temporal area	0.42	1.25e-04	3.64e-04	0.72	5.88e-13	5.57e-12	2.87	0.004	0.009
left isthmus cingulate area	0.33	0.002	0.005	0.50	3.76e-06	1.43e-05	1.24	0.214	0.306
left lateral occipital area	0.32	0.003	0.007	0.52	1.99e-06	7.90e-06	1.44	0.151	0.226
left lateral orbitofrontal area	0.51	2.90e-06	1.13e-05	0.67	9.41e-11	6.54e-10	1.74	0.082	0.134
left lingual area	0.24	0.023	0.042	0.58	4.25e-08	2.13e-07	2.51	0.012	0.024
left medial orbitofrontal area	0.48	1.09e-05	3.84e-05	0.50	3.73e-06	1.42e-05	0.22	0.824	0.889
left middle temporal area	0.45	4.19e-05	1.32e-04	0.72	8.58e-13	7.88e-12	2.70	0.007	0.015
left parahippocampal area	-0.16	0.906	0.947	0.21	0.039	0.069	2.06	0.039	0.070
left paracentral area	0.34	0.002	0.004	0.75	3.25e-14	3.61e-13	3.73	1.93e-04	5.47e-04
left pars triangularis area	0.40	3.23e-04	8.75e-04	0.65	4.52e-10	2.87e-09	2.54	0.011	0.022
left pars opercularis area	0.45	4.43e-05	1.39e-04	0.48	1.10e-05	3.87e-05	0.27	0.789	0.862
left pars orbitalis area	0.59	4.06e-08	2.04e-07	0.63	1.97e-09	1.18e-08	0.48	0.631	0.726
left pericalcarine area	0.33	0.002	0.006	0.65	5.25e-10	3.31e-09	2.78	0.005	0.012
left postcentral area	0.20	0.044	0.078	0.70	5.61e-12	4.67e-11	4.25	2.09e-05	7.02e-05
left posterior cingulate area	0.30	0.006	0.013	0.57	8.80e-08	4.26e-07	2.48	0.013	0.026
left precentral area	0.35	0.001	0.003	0.82	6.55e-19	1.68e-17	5.50	3.76e-08	1.90e-07
left precuneus area	0.31	0.004	0.010	0.72	6.43e-13	6.07e-12	3.58	3.48e-04	9.36e-04
left rostral anterior cingulate area	0.33	0.003	0.006	0.60	1.25e-08	6.71e-08	2.70	0.007	0.014
left rostral middle frontal area	0.56	2.02e-07	9.38e-07	0.73	1.92e-13	1.91e-12	2.52	0.012	0.024
left superior frontal area	0.52	1.89e-06	7.54e-06	0.76	5.76e-15	6.97e-14	3.22	0.001	0.003
left superior parietal area	0.37	7.83e-04	0.002	0.67	1.04e-10	7.15e-10	2.61	0.009	0.018
left superior temporal area	0.29	0.008	0.016	0.78	6.94e-16	1.00e-14	5.14	2.79e-07	1.26e-06
left supramarginal area	0.50	3.88e-06	1.47e-05	0.78	7.28e-16	1.04e-14	3.28	0.001	0.003
left frontal pole area	0.24	0.020	0.038	0.24	0.020	0.038	5.8e-03	0.995	0.997

left temporal pole area	-0.06	0.693	0.781	0.12	0.151	0.226	1.06	0.289	0.391
left transverse temporal area	0.13	0.145	0.219	0.72	9.76e-13	8.85e-12	4.52	6.20e-06	2.30e-05
left insula area	0.27	0.012	0.024	0.77	3.37e-15	4.37e-14	4.63	3.73e-06	1.42e-05
right banks of superior temporal sulcus area	0.39	3.81e-04	0.001	0.68	3.30e-11	2.38e-10	2.65	0.008	0.017
right caudal anterior cingulate area	0.49	8.19e-06	2.97e-05	0.71	2.68e-12	2.30e-11	2.51	0.012	0.024
right caudal middle frontal area	0.40	2.76e-04	7.58e-04	0.60	2.11e-08	1.11e-07	1.93	0.054	0.093
right cuneus area	0.17	0.073	0.122	0.51	2.92e-06	1.13e-05	2.79	0.005	0.011
right entorhinal area	-0.13	0.863	0.913	0.12	0.151	0.226	1.62	0.106	0.168
right fusiform area	0.43	1.03e-04	3.01e-04	0.76	6.27e-15	7.50e-14	3.38	7.38e-04	0.002
right inferior parietal area	0.49	6.16e-06	2.28e-05	0.74	1.08e-13	1.13e-12	2.88	0.004	0.009
right inferior temporal area	0.52	1.36e-06	5.57e-06	0.76	5.31e-15	6.49e-14	2.80	0.005	0.011
right isthmus cingulate area	0.17	0.072	0.121	0.72	5.67e-13	5.40e-12	4.78	1.80e-06	7.19e-06
right lateral occipital area	0.54	6.37e-07	2.77e-06	0.64	1.07e-09	6.51e-09	1.03	0.305	0.408
right lateral orbitofrontal area	0.51	3.26e-06	1.25e-05	0.54	5.13e-07	2.25e-06	0.35	0.724	0.809
right lingual area	0.10	0.209	0.299	0.60	2.15e-08	1.13e-07	4.30	1.73e-05	5.85e-05
right medial orbitofrontal area	0.43	1.05e-04	3.09e-04	0.44	5.48e-05	1.70e-04	0.13	0.897	0.940
right middle temporal area	0.45	4.27e-05	1.35e-04	0.74	5.16e-14	5.54e-13	3.38	7.28e-04	0.002
right parahippocampal area	0.02	0.433	0.545	0.28	0.009	0.018	1.57	0.117	0.184
right paracentral area	0.36	9.93e-04	0.002	0.61	6.80e-09	3.77e-08	2.41	0.016	0.031
right pars triangularis area	0.42	1.46e-04	4.19e-04	0.75	2.16e-14	2.48e-13	3.97	7.29e-05	2.21e-04
right pars opercularis area	0.48	1.10e-05	3.85e-05	0.54	7.38e-07	3.16e-06	0.51	0.610	0.705
right pars orbitalis area	0.35	0.001	0.003	0.64	1.09e-09	6.59e-09	2.85	0.004	0.010
right pericalcarine area	0.44	6.86e-05	2.09e-04	0.68	4.82e-11	3.43e-10	2.55	0.011	0.022
right postcentral area	0.43	7.50e-05	2.26e-04	0.68	3.47e-11	2.50e-10	2.76	0.006	0.013
right posterior cingulate area	0.32	0.003	0.007	0.69	8.85e-12	7.14e-11	4.14	3.50e-05	1.12e-04
right precentral area	0.48	1.16e-05	4.03e-05	0.63	2.70e-09	1.58e-08	1.51	0.132	0.203
right precuneus area	0.43	8.69e-05	2.58e-04	0.70	5.93e-12	4.91e-11	2.60	0.009	0.019
right rostral anterior cingulate area	0.41	1.91e-04	5.40e-04	0.78	4.33e-16	6.50e-15	4.32	1.56e-05	5.32e-05
right rostral middle frontal area	0.40	2.73e-04	7.50e-04	0.64	1.18e-09	7.13e-09	2.42	0.016	0.030
right superior frontal area	0.51	3.49e-06	1.34e-05	0.69	2.11e-11	1.58e-10	2.32	0.020	0.038
right superior parietal area	0.21	0.040	0.071	0.60	2.17e-08	1.13e-07	3.14	0.002	0.004
right superior temporal area	0.48	1.18e-05	4.10e-05	0.77	3.04e-15	3.96e-14	3.52	4.36e-04	0.001
right supramarginal area	0.27	0.011	0.023	0.66	2.02e-10	1.34e-09	3.68	2.33e-04	6.52e-04
right frontal pole area	0.26	0.014	0.028	0.13	0.139	0.212	-0.88	0.381	0.492

right temporal pole area	4.7e-03	0.485	0.591	0.06	0.314	0.417	0.32	0.747	0.826
right transverse temporal area	0.25	0.016	0.031	0.58	4.47e-08	2.23e-07	2.64	0.008	0.017
right insula area	0.16	0.087	0.142	0.66	1.30e-10	8.82e-10	3.80	1.42e-04	4.10e-04
left banks of superior temporal sulcus volume	0.25	0.017	0.033	0.67	1.01e-10	6.96e-10	4.31	1.61e-05	5.49e-05
left caudal anterior cingulate volume	0.29	0.008	0.016	0.54	6.53e-07	2.83e-06	3.09	0.002	0.005
left caudal middle frontal volume	0.34	0.002	0.004	0.69	1.83e-11	1.42e-10	3.25	0.001	0.003
left cuneus volume	0.30	0.005	0.011	0.65	3.69e-10	2.37e-09	2.86	0.004	0.009
left entorhinal volume	-0.10	0.798	0.868	0.31	0.004	0.009	2.31	0.021	0.039
left fusiform volume	0.31	0.005	0.010	0.66	2.41e-10	1.58e-09	2.70	0.007	0.014
left inferior parietal volume	0.53	1.21e-06	5.01e-06	0.82	9.68e-19	2.32e-17	3.92	8.98e-05	2.65e-04
left inferior temporal volume	0.45	4.57e-05	1.43e-04	0.78	9.63e-16	1.34e-14	3.55	3.86e-04	0.001
left isthmus cingulate volume	0.30	0.006	0.013	0.49	6.05e-06	2.25e-05	1.38	0.166	0.246
left lateral occipital volume	0.39	4.22e-04	0.001	0.55	4.08e-07	1.81e-06	1.36	0.175	0.257
left lateral orbitofrontal volume	0.47	2.19e-05	7.34e-05	0.69	2.11e-11	1.58e-10	2.28	0.023	0.043
left lingual volume	0.12	0.155	0.231	0.65	4.22e-10	2.69e-09	4.14	3.46e-05	1.11e-04
left medial orbitofrontal volume	0.28	0.009	0.018	0.41	1.72e-04	4.93e-04	1.05	0.296	0.399
left middle temporal volume	0.30	0.006	0.013	0.71	2.30e-12	1.99e-11	3.78	1.57e-04	4.52e-04
left parahippocampal volume	-0.03	0.603	0.700	0.16	0.087	0.141	1.15	0.252	0.350
left paracentral volume	0.31	0.004	0.009	0.65	4.69e-10	2.97e-09	2.82	0.005	0.011
left pars triangularis volume	0.46	3.10e-05	1.00e-04	0.62	4.56e-09	2.59e-08	1.89	0.058	0.100
left pars opercularis volume	0.35	0.001	0.003	0.43	8.63e-05	2.56e-04	0.64	0.520	0.623
left pars orbitalis volume	0.53	7.98e-07	3.40e-06	0.58	5.73e-08	2.82e-07	0.46	0.646	0.740
left pericalcarine volume	0.31	0.004	0.009	0.56	1.67e-07	7.79e-07	2.06	0.039	0.070
left postcentral volume	0.22	0.034	0.061	0.67	1.19e-10	8.14e-10	3.70	2.13e-04	5.99e-04
left posterior cingulate volume	0.27	0.011	0.022	0.54	4.56e-07	2.01e-06	2.41	0.016	0.031
left precentral volume	0.35	0.001	0.003	0.77	2.03e-15	2.72e-14	5.02	5.23e-07	2.29e-06
left precuneus volume	0.27	0.011	0.022	0.69	1.22e-11	9.68e-11	3.65	2.62e-04	7.27e-04
left rostral anterior cingulate volume	0.32	0.003	0.007	0.51	2.28e-06	8.97e-06	1.79	0.073	0.122
left rostral middle frontal volume	0.46	2.40e-05	8.00e-05	0.56	1.50e-07	7.07e-07	1.18	0.240	0.337
left superior frontal volume	0.36	0.001	0.003	0.69	1.90e-11	1.46e-10	4.11	3.93e-05	1.24e-04
left superior parietal volume	0.46	2.27e-05	7.58e-05	0.62	3.38e-09	1.95e-08	1.38	0.166	0.246
left superior temporal volume	0.19	0.055	0.094	0.80	5.70e-17	9.85e-16	6.15	7.76e-10	4.83e-09
left supramarginal volume	0.38	5.15e-04	0.001	0.69	2.04e-11	1.54e-10	3.10	0.002	0.005
left frontal pole volume	-0.04	0.624	0.718	-0.10	0.808	0.876	-0.45	0.652	0.745
left temporal pole volume	-0.07	0.707	0.792	0.07	0.282	0.384	0.72	0.469	0.579

left transverse temporal volume	0.08	0.243	0.340	0.68	3.37e-11	2.43e-10	4.44	9.08e-06	3.26e-05
left insula volume	0.41	1.80e-04	5.12e-04	0.73	3.20e-13	3.09e-12	3.31	9.27e-04	0.002
right banks of superior temporal sulcus volume	0.39	3.36e-04	9.07e-04	0.60	2.11e-08	1.11e-07	1.78	0.075	0.124
right caudal anterior cingulate volume	0.58	6.08e-08	2.99e-07	0.71	2.04e-12	1.77e-11	1.75	0.080	0.131
right caudal middle frontal volume	0.40	3.11e-04	8.47e-04	0.53	8.58e-07	3.65e-06	1.28	0.200	0.288
right cuneus volume	0.16	0.093	0.150	0.51	3.26e-06	1.25e-05	2.79	0.005	0.011
right entorhinal volume	-0.21	0.961	0.982	0.18	0.067	0.113	2.41	0.016	0.031
right fusiform volume	0.31	0.005	0.011	0.71	2.11e-12	1.83e-11	3.58	3.47e-04	9.35e-04
right inferior parietal volume	0.42	1.33e-04	3.85e-04	0.69	1.57e-11	1.23e-10	3.20	0.001	0.003
right inferior temporal volume	0.47	1.43e-05	4.92e-05	0.76	5.40e-15	6.57e-14	3.26	0.001	0.003
right isthmus cingulate volume	0.18	0.072	0.120	0.69	1.35e-11	1.06e-10	4.40	1.08e-05	3.80e-05
right lateral occipital volume	0.56	1.46e-07	6.91e-07	0.59	2.82e-08	1.46e-07	0.29	0.768	0.846
right lateral orbitofrontal volume	0.49	9.01e-06	3.24e-05	0.60	1.80e-08	9.56e-08	1.15	0.251	0.350
right lingual volume	0.04	0.381	0.492	0.64	8.36e-10	5.19e-09	5.25	1.49e-07	7.03e-07
right medial orbitofrontal volume	0.27	0.010	0.021	0.31	0.005	0.010	0.24	0.809	0.877
right middle temporal volume	0.38	5.09e-04	0.001	0.68	3.21e-11	2.34e-10	3.13	0.002	0.004
right parahippocampal volume	0.09	0.233	0.329	0.03	0.393	0.504	-0.33	0.741	0.822
right paracentral volume	0.45	3.43e-05	1.10e-04	0.54	6.99e-07	3.01e-06	0.80	0.423	0.535
right pars triangularis volume	0.43	8.39e-05	2.50e-04	0.61	1.12e-08	6.07e-08	1.89	0.059	0.100
right pars opercularis volume	0.48	1.40e-05	4.80e-05	0.55	3.09e-07	1.38e-06	0.74	0.459	0.569
right pars orbitalis volume	0.36	0.001	0.003	0.59	3.77e-08	1.90e-07	2.38	0.017	0.033
right pericalcarine volume	0.32	0.003	0.007	0.61	6.49e-09	3.61e-08	2.73	0.006	0.014
right postcentral volume	0.48	9.43e-06	3.37e-05	0.67	5.49e-11	3.89e-10	2.26	0.024	0.045
right posterior cingulate volume	0.37	8.09e-04	0.002	0.67	8.77e-11	6.14e-10	3.29	0.001	0.002
right precentral volume	0.48	1.06e-05	3.74e-05	0.57	7.96e-08	3.87e-07	1.04	0.299	0.402
right precuneus volume	0.31	0.004	0.010	0.66	2.65e-10	1.73e-09	3.16	0.002	0.004
right rostral anterior cingulate volume	0.40	2.69e-04	7.42e-04	0.69	1.10e-11	8.75e-11	3.00	0.003	0.006
right rostral middle frontal volume	0.26	0.015	0.030	0.50	5.66e-06	2.11e-05	2.58	0.010	0.020
right superior frontal volume	0.43	8.13e-05	2.44e-04	0.60	1.26e-08	6.74e-08	2.11	0.035	0.062
right superior parietal volume	0.25	0.017	0.033	0.53	8.90e-07	3.78e-06	2.36	0.018	0.035
right superior temporal volume	0.53	1.04e-06	4.37e-06	0.78	2.76e-16	4.29e-15	3.45	5.68e-04	0.001
right supramarginal volume	0.34	0.002	0.004	0.71	1.85e-12	1.62e-11	4.20	2.62e-05	8.66e-05
right frontal pole volume	0.03	0.396	0.506	-0.05	0.666	0.757	-0.52	0.606	0.701
right temporal pole volume	0.08	0.242	0.340	0.08	0.262	0.362	-0.04	0.965	0.985

right transverse temporal volume	0.23	0.027	0.050	0.51	2.65e-06	1.04e-05	2.31	0.021	0.039
right insula volume	0.20	0.049	0.085	0.71	2.38e-12	2.05e-11	4.14	3.47e-05	1.11e-04
left lateral ventricle subcortical volume	0.95	2.89e-36	7.86e-34	0.97	5.38e-43	3.90e-40	2.34	0.019	0.037
left inf lat vent subcortical volume	0.53	9.80e-07	4.14e-06	0.52	1.82e-06	7.26e-06	-0.11	0.915	0.953
left cerebellum white matter subcortical volume	0.44	6.51e-05	1.99e-04	0.39	4.40e-04	0.001	-0.39	0.699	0.785
left cerebellum cortex subcortical volume	0.73	2.57e-13	2.51e-12	0.86	3.24e-22	1.76e-20	2.95	0.003	0.007
left thalamus proper subcortical volume	0.39	4.05e-04	0.001	0.78	4.59e-16	6.84e-15	3.90	9.50e-05	2.80e-04
left caudate subcortical volume	0.47	1.52e-05	5.19e-05	0.70	8.54e-12	6.94e-11	2.90	0.004	0.008
left putamen subcortical volume	0.38	5.65e-04	0.001	0.56	1.82e-07	8.46e-07	1.88	0.060	0.102
left pallidum subcortical volume	0.26	0.016	0.030	0.51	2.91e-06	1.13e-05	1.99	0.047	0.081
3rd ventricle subcortical volume	0.69	2.00e-11	1.53e-10	0.90	1.59e-26	1.73e-24	4.64	3.51e-06	1.35e-05
4th ventricle subcortical volume	0.60	1.65e-08	8.77e-08	0.85	4.68e-21	2.00e-19	3.95	7.89e-05	2.37e-04
brain stem subcortical volume	0.78	2.74e-16	4.29e-15	0.88	5.19e-24	3.90e-22	2.49	0.013	0.026
left hippocampus subcortical volume	0.17	0.073	0.121	0.46	2.59e-05	8.59e-05	1.98	0.047	0.082
left amygdala subcortical volume	0.27	0.011	0.023	0.46	3.03e-05	9.89e-05	1.52	0.128	0.198
csf subcortical volume	0.24	0.020	0.038	0.65	4.88e-10	3.08e-09	4.17	3.04e-05	9.90e-05
left accumbens area subcortical volume	7.6e-03	0.475	0.584	0.24	0.022	0.041	1.39	0.165	0.245
left ventral diencephalon subcortical volume	0.48	1.26e-05	4.35e-05	0.68	2.66e-11	1.95e-10	2.20	0.028	0.051
left vessel subcortical volume	8.6e-03	0.472	0.581	0.20	0.046	0.081	1.08	0.279	0.381
left choroid plexus subcortical volume	0.39	3.28e-04	8.89e-04	0.60	1.95e-08	1.03e-07	2.78	0.005	0.012
right lateral ventricle subcortical volume	0.92	1.53e-29	2.79e-27	0.96	1.34e-38	5.83e-36	2.62	0.009	0.018
right inf lat vent subcortical volume	0.45	4.81e-05	1.50e-04	0.47	1.90e-05	6.42e-05	0.17	0.867	0.915
cerebellum white matter subcortical volume	0.62	4.73e-09	2.67e-08	0.52	1.54e-06	6.27e-06	-0.99	0.321	0.425
cerebellum cortex subcortical volume	0.68	2.26e-11	1.67e-10	0.84	6.18e-20	1.89e-18	2.72	0.006	0.014
right thalamus proper subcortical volume	0.29	0.006	0.014	0.71	1.35e-12	1.21e-11	3.93	8.39e-05	2.50e-04
right caudate subcortical volume	0.19	0.052	0.089	0.48	1.04e-05	3.69e-05	2.61	0.009	0.018
right putamen subcortical volume	0.29	0.007	0.014	0.70	5.13e-12	4.30e-11	3.55	3.90e-04	0.001
right pallidum subcortical volume	0.24	0.022	0.041	0.62	5.15e-09	2.88e-08	2.87	0.004	0.009
right hippocampus subcortical volume	0.14	0.117	0.184	0.55	2.79e-07	1.26e-06	3.12	0.002	0.004
right amygdala subcortical volume	0.19	0.052	0.089	0.58	4.45e-08	2.22e-07	3.27	0.001	0.003
right accumbens area subcortical volume	0.17	0.079	0.131	0.40	2.50e-04	6.95e-04	1.50	0.134	0.205
right ventral diencephalon subcortical volume	0.58	5.45e-08	2.70e-07	0.76	6.17e-15	7.42e-14	2.42	0.015	0.030
right vessel subcortical volume	-7.9e-03	0.526	0.628	0.02	0.432	0.544	0.17	0.865	0.915
right choroid plexus subcortical volume	0.41	1.61e-04	4.63e-04	0.48	9.72e-06	3.46e-05	0.72	0.470	0.579
optic chiasm subcortical volume	0.02	0.446	0.558	0.20	0.045	0.078	1.10	0.270	0.371

corpus callosum posterior subcortical volume	0.34	0.002	0.004	0.75	2.91e-14	3.26e-13	4.15	3.34e-05	1.07e-04
corpus callosum mid posterior subcortical volume	0.13	0.133	0.205	0.52	1.33e-06	5.48e-06	3.14	0.002	0.004
corpus callosum central subcortical volume	0.29	0.007	0.014	0.42	1.31e-04	3.80e-04	1.01	0.313	0.417
corpus callosum mid anterior subcortical volume	0.33	0.002	0.005	0.45	3.79e-05	1.20e-04	1.08	0.279	0.381
corpus callosum anterior subcortical volume	0.43	9.05e-05	2.67e-04	0.82	9.41e-19	2.30e-17	4.66	3.09e-06	1.19e-05

STable 4. Pearson correlations of regional measurements from standard axial versus standard multi-orientation 64mT scans with 3T scans. Differences between correlation strengths were tested using Steiger's Z. A positive Z-value indicates that multi-orientation regions were more strongly correlated to 3T scans than axial-only regions. Analyses that are statistically significant after correction for multiple comparisons are in bold.

Measurement	Standard Axial 64mT Correlations with 3T			Standard Multi-Orientation 64mT Correlations with 3T			Steiger		
	<i>r</i>	<i>p</i>	<i>q</i>	<i>r</i>	<i>p</i>	<i>q</i>	<i>z</i>	<i>p</i>	<i>q</i>
left banks of superior temporal sulcus thickness	-0.32	0.007	0.015	-0.25	0.037	0.066	0.55	0.581	0.668
left caudal anterior cingulate thickness	0.01	0.914	0.939	-0.10	0.404	0.503	-0.83	0.407	0.504
left caudal middle frontal thickness	0.20	0.090	0.140	-0.05	0.666	0.740	-1.78	0.075	0.119
left cuneus thickness	0.13	0.276	0.365	-0.02	0.878	0.913	-1.08	0.281	0.370
left entorhinal thickness	-0.02	0.896	0.926	-0.20	0.096	0.148	-1.09	0.276	0.365
left fusiform thickness	-0.17	0.168	0.239	-0.21	0.077	0.123	-0.38	0.706	0.772
left inferior parietal thickness	-0.19	0.123	0.183	-0.23	0.055	0.091	-0.39	0.694	0.763
left inferior temporal thickness	0.09	0.481	0.574	-0.18	0.137	0.201	-2.07	0.038	0.067
left isthmus cingulate thickness	-0.03	0.829	0.878	-0.21	0.079	0.125	-1.18	0.240	0.326
left lateral occipital thickness	0.01	0.929	0.949	-0.01	0.931	0.949	-0.19	0.851	0.893
left lateral orbitofrontal thickness	-0.04	0.771	0.830	0.02	0.879	0.913	0.43	0.670	0.742
left lingual thickness	0.09	0.449	0.542	-0.15	0.226	0.308	-1.58	0.115	0.172
left medial orbitofrontal thickness	-0.34	0.004	0.009	-0.26	0.027	0.049	0.64	0.525	0.618
left middle temporal thickness	-0.27	0.022	0.041	-0.40	6.11e-04	0.002	-1.16	0.248	0.335
left parahippocampal thickness	0.03	0.776	0.836	0.23	0.053	0.087	1.26	0.207	0.285
left paracentral thickness	0.06	0.642	0.720	0.14	0.251	0.339	0.51	0.607	0.690
left pars triangularis thickness	0.33	0.005	0.011	-0.03	0.785	0.843	-2.32	0.020	0.038
left pars opercularis thickness	-0.13	0.298	0.389	-0.10	0.427	0.522	0.23	0.821	0.872
left pars orbitalis thickness	-0.21	0.081	0.129	-0.28	0.021	0.039	-0.45	0.656	0.732
left pericalcarine thickness	0.09	0.447	0.542	0.03	0.824	0.873	-0.46	0.646	0.723
left postcentral thickness	0.13	0.299	0.390	0.14	0.241	0.328	0.09	0.926	0.948
left posterior cingulate thickness	-0.18	0.133	0.196	-0.20	0.102	0.155	-0.11	0.909	0.935
left precentral thickness	0.09	0.484	0.577	0.09	0.472	0.566	0.01	0.990	0.992
left precuneus thickness	0.07	0.550	0.642	-0.03	0.825	0.874	-0.79	0.431	0.525
left rostral anterior cingulate thickness	-0.30	0.010	0.021	-0.19	0.118	0.177	0.88	0.378	0.477
left rostral middle frontal thickness	-0.01	0.915	0.939	-0.29	0.014	0.027	-2.30	0.021	0.040
left superior frontal thickness	0.02	0.843	0.888	-0.07	0.571	0.659	-0.57	0.572	0.660
left superior parietal thickness	0.04	0.722	0.787	-0.03	0.808	0.861	-0.44	0.663	0.737
left superior temporal thickness	-0.24	0.049	0.082	-0.26	0.033	0.059	-0.15	0.881	0.914

left supramarginal thickness	0.02	0.859	0.898	-0.36	0.002	0.005	-2.69	0.007	0.015
left frontal pole thickness	-0.23	0.058	0.095	-0.10	0.434	0.528	0.92	0.356	0.454
left temporal pole thickness	-0.24	0.048	0.081	0.07	0.563	0.653	1.83	0.067	0.109
left transverse temporal thickness	-0.30	0.012	0.023	-0.32	0.008	0.016	-0.12	0.907	0.933
left insula thickness	-0.07	0.539	0.631	-0.09	0.448	0.542	-0.12	0.907	0.933
right banks of superior temporal sulcus thickness	-0.13	0.290	0.381	-0.21	0.087	0.137	-0.52	0.600	0.684
right caudal anterior cingulate thickness	-0.16	0.174	0.247	-0.32	0.007	0.014	-1.25	0.210	0.289
right caudal middle frontal thickness	0.05	0.656	0.732	-0.16	0.194	0.269	-1.40	0.163	0.233
right cuneus thickness	0.10	0.428	0.523	-0.03	0.802	0.856	-0.85	0.394	0.492
right entorhinal thickness	-0.23	0.057	0.094	-0.23	0.053	0.088	-0.02	0.981	0.986
right fusiform thickness	-0.21	0.088	0.137	-0.19	0.111	0.168	0.10	0.921	0.944
right inferior parietal thickness	-0.21	0.077	0.123	-0.16	0.188	0.262	0.58	0.561	0.651
right inferior temporal thickness	-0.14	0.256	0.344	-0.19	0.124	0.184	-0.35	0.727	0.792
right isthmus cingulate thickness	-0.02	0.871	0.907	-0.22	0.062	0.101	-1.36	0.175	0.247
right lateral occipital thickness	0.18	0.128	0.189	0.10	0.423	0.518	-0.79	0.429	0.523
right lateral orbitofrontal thickness	-0.05	0.710	0.776	-0.12	0.307	0.398	-0.62	0.534	0.626
right lingual thickness	-0.04	0.756	0.817	-0.28	0.019	0.036	-1.72	0.086	0.135
right medial orbitofrontal thickness	-0.35	0.003	0.006	-0.26	0.029	0.052	0.80	0.425	0.520
right middle temporal thickness	-0.37	0.002	0.004	-0.33	0.005	0.011	0.32	0.746	0.809
right parahippocampal thickness	0.21	0.077	0.122	0.17	0.163	0.233	-0.25	0.803	0.856
right paracentral thickness	0.17	0.171	0.243	0.14	0.256	0.344	-0.21	0.836	0.882
right pars triangularis thickness	0.21	0.087	0.136	-0.01	0.925	0.947	-1.29	0.196	0.271
right pars opercularis thickness	-0.05	0.683	0.754	0.05	0.658	0.734	0.84	0.402	0.501
right pars orbitalis thickness	3.2e-03	0.979	0.986	-0.14	0.263	0.351	-1.05	0.296	0.387
right pericalcarine thickness	-0.03	0.808	0.861	-0.09	0.443	0.537	-0.40	0.692	0.761
right postcentral thickness	0.15	0.229	0.313	-0.13	0.288	0.378	-1.71	0.087	0.136
right posterior cingulate thickness	-0.11	0.362	0.460	-0.34	0.004	0.008	-1.98	0.048	0.081
right precentral thickness	0.16	0.187	0.261	5.5e-03	0.964	0.975	-1.15	0.252	0.340
right precuneus thickness	0.07	0.539	0.631	-0.14	0.251	0.339	-1.71	0.087	0.136
right rostral anterior cingulate thickness	-0.37	0.001	0.003	-0.15	0.225	0.307	1.71	0.088	0.137
right rostral middle frontal thickness	-0.19	0.113	0.170	-0.21	0.079	0.125	-0.18	0.855	0.895
right superior frontal thickness	0.16	0.193	0.268	3.0e-03	0.980	0.986	-1.20	0.231	0.315
right superior parietal thickness	0.12	0.314	0.405	0.18	0.134	0.196	0.48	0.633	0.712
right superior temporal thickness	-0.18	0.144	0.209	-0.30	0.012	0.023	-0.91	0.364	0.463
right supramarginal thickness	0.19	0.106	0.161	-0.32	0.006	0.013	-3.57	3.63e-04	9.60e-04

right frontal pole thickness	-0.10	0.406	0.503	-0.13	0.300	0.390	-0.17	0.867	0.904
right temporal pole thickness	0.17	0.168	0.239	-0.15	0.226	0.308	-1.88	0.060	0.098
right transverse temporal thickness	-0.03	0.814	0.866	-0.26	0.031	0.056	-1.58	0.115	0.172
right insula thickness	-0.07	0.589	0.674	-0.06	0.595	0.679	6.9e-03	0.995	0.996
left banks of superior temporal sulcus area	0.34	0.003	0.008	0.59	6.05e-08	2.90e-07	2.25	0.025	0.045
left caudal anterior cingulate area	0.35	0.003	0.007	0.22	0.066	0.107	-1.61	0.108	0.163
left caudal middle frontal area	0.31	0.009	0.018	0.46	5.69e-05	1.70e-04	1.27	0.205	0.284
left cuneus area	0.41	4.66e-04	0.001	0.45	1.05e-04	3.05e-04	0.28	0.780	0.839
left entorhinal area	-0.06	0.607	0.690	0.06	0.641	0.718	0.72	0.470	0.565
left fusiform area	0.31	0.009	0.018	0.39	8.89e-04	0.002	0.60	0.550	0.641
left inferior parietal area	0.59	1.04e-07	4.85e-07	0.69	2.58e-11	1.86e-10	1.36	0.175	0.247
left inferior temporal area	0.43	1.98e-04	5.47e-04	0.59	1.04e-07	4.84e-07	1.56	0.119	0.177
left isthmus cingulate area	0.34	0.004	0.009	0.18	0.146	0.212	-1.10	0.270	0.359
left lateral occipital area	0.33	0.005	0.011	0.56	5.99e-07	2.47e-06	1.68	0.093	0.144
left lateral orbitofrontal area	0.51	6.58e-06	2.33e-05	0.65	8.07e-10	4.94e-09	1.75	0.080	0.128
left lingual area	0.24	0.046	0.078	0.40	5.38e-04	0.001	1.05	0.296	0.387
left medial orbitofrontal area	0.49	1.68e-05	5.53e-05	0.53	2.45e-06	9.23e-06	0.42	0.678	0.748
left middle temporal area	0.46	6.52e-05	1.93e-04	0.39	8.63e-04	0.002	-0.63	0.532	0.623
left parahippocampal area	-0.23	0.060	0.098	0.05	0.660	0.735	1.71	0.088	0.137
left paracentral area	0.34	0.003	0.008	0.71	5.36e-12	4.29e-11	3.52	4.26e-04	0.001
left pars triangularis area	0.40	6.91e-04	0.002	0.40	5.61e-04	0.001	0.06	0.954	0.967
left pars opercularis area	0.45	8.10e-05	2.37e-04	0.45	8.42e-05	2.46e-04	-7.7e-03	0.994	0.996
left pars orbitalis area	0.60	4.50e-08	2.22e-07	0.53	2.36e-06	8.91e-06	-0.70	0.484	0.578
left pericalcarine area	0.33	0.005	0.011	0.42	3.43e-04	9.12e-04	0.63	0.530	0.622
left postcentral area	0.21	0.088	0.137	0.23	0.053	0.088	0.19	0.848	0.892
left posterior cingulate area	0.30	0.011	0.022	0.38	0.001	0.003	0.86	0.390	0.489
left precentral area	0.36	0.002	0.006	0.46	5.30e-05	1.60e-04	0.94	0.349	0.446
left precuneus area	0.32	0.007	0.015	0.45	1.09e-04	3.16e-04	0.98	0.327	0.422
left rostral anterior cingulate area	0.44	1.35e-04	3.84e-04	0.41	4.25e-04	0.001	-0.32	0.753	0.815
left rostral middle frontal area	0.61	2.61e-08	1.31e-07	0.65	7.92e-10	4.88e-09	0.63	0.526	0.618
left superior frontal area	0.53	1.85e-06	7.08e-06	0.64	1.72e-09	1.01e-08	1.34	0.180	0.252
left superior parietal area	0.37	0.002	0.004	0.50	9.86e-06	3.38e-05	1.08	0.279	0.369
left superior temporal area	0.29	0.015	0.029	0.49	2.00e-05	6.47e-05	1.65	0.099	0.152
left supramarginal area	0.52	3.70e-06	1.36e-05	0.50	1.25e-05	4.21e-05	-0.26	0.797	0.851

left frontal pole area	0.25	0.038	0.066	0.12	0.304	0.394	-0.76	0.448	0.542
left temporal pole area	-0.10	0.428	0.523	0.10	0.397	0.495	1.11	0.267	0.356
left transverse temporal area	0.16	0.192	0.267	0.46	7.44e-05	2.19e-04	2.15	0.032	0.056
left insula area	0.28	0.018	0.033	0.27	0.022	0.041	-0.09	0.929	0.949
right banks of superior temporal sulcus area	0.41	3.90e-04	0.001	0.32	0.006	0.013	-0.79	0.427	0.522
right caudal anterior cingulate area	0.62	9.78e-09	5.24e-08	0.70	1.57e-11	1.19e-10	1.27	0.202	0.279
right caudal middle frontal area	0.44	1.14e-04	3.28e-04	0.51	6.09e-06	2.17e-05	0.64	0.519	0.613
right cuneus area	0.18	0.141	0.206	0.33	0.005	0.011	1.16	0.247	0.335
right entorhinal area	-0.16	0.183	0.257	0.14	0.265	0.353	2.07	0.039	0.068
right fusiform area	0.44	1.17e-04	3.36e-04	0.61	2.00e-08	1.02e-07	1.52	0.129	0.190
right inferior parietal area	0.53	2.26e-06	8.58e-06	0.58	1.33e-07	6.06e-07	0.58	0.564	0.654
right inferior temporal area	0.55	8.35e-07	3.39e-06	0.60	3.37e-08	1.68e-07	0.63	0.532	0.623
right isthmus cingulate area	0.19	0.122	0.181	0.31	0.008	0.017	1.10	0.272	0.361
right lateral occipital area	0.54	1.44e-06	5.62e-06	0.69	2.48e-11	1.80e-10	1.68	0.093	0.144
right lateral orbitofrontal area	0.51	7.31e-06	2.56e-05	0.55	8.48e-07	3.44e-06	0.40	0.690	0.760
right lingual area	0.10	0.409	0.505	0.49	1.96e-05	6.34e-05	2.99	0.003	0.006
right medial orbitofrontal area	0.43	2.03e-04	5.58e-04	0.42	3.06e-04	8.22e-04	-0.10	0.921	0.944
right middle temporal area	0.45	9.29e-05	2.69e-04	0.22	0.072	0.116	-2.26	0.024	0.044
right parahippocampal area	0.03	0.814	0.866	0.16	0.190	0.265	0.82	0.409	0.506
right paracentral area	0.36	0.002	0.005	0.49	2.08e-05	6.70e-05	1.17	0.244	0.331
right pars triangularis area	0.42	3.09e-04	8.29e-04	0.55	9.97e-07	4.00e-06	1.41	0.159	0.229
right pars opercularis area	0.48	2.23e-05	7.13e-05	0.39	9.43e-04	0.002	-0.83	0.406	0.503
right pars orbitalis area	0.37	0.001	0.003	0.52	3.86e-06	1.42e-05	1.42	0.156	0.225
right pericalcarine area	0.44	1.53e-04	4.31e-04	0.28	0.018	0.033	-1.45	0.146	0.212
right postcentral area	0.44	1.27e-04	3.64e-04	0.46	5.85e-05	1.74e-04	0.20	0.838	0.885
right posterior cingulate area	0.32	0.007	0.014	0.36	0.002	0.005	0.48	0.634	0.713
right precentral area	0.48	2.62e-05	8.27e-05	0.48	2.24e-05	7.17e-05	0.04	0.970	0.978
right precuneus area	0.43	1.77e-04	4.92e-04	0.44	1.33e-04	3.80e-04	0.06	0.951	0.965
right rostral anterior cingulate area	0.57	2.66e-07	1.17e-06	0.60	4.84e-08	2.37e-07	0.39	0.694	0.763
right rostral middle frontal area	0.49	1.97e-05	6.38e-05	0.57	2.56e-07	1.13e-06	0.92	0.356	0.454
right superior frontal area	0.56	4.54e-07	1.92e-06	0.69	5.19e-11	3.58e-10	1.74	0.083	0.131
right superior parietal area	0.22	0.062	0.102	0.25	0.038	0.067	0.18	0.855	0.895
right superior temporal area	0.50	8.61e-06	2.98e-05	0.36	0.002	0.005	-1.20	0.230	0.314
right supramarginal area	0.28	0.021	0.039	0.28	0.018	0.034	0.06	0.955	0.967
right frontal pole area	0.26	0.027	0.049	0.20	0.102	0.156	-0.52	0.602	0.686

right temporal pole area	7.4e-03	0.951	0.965	0.20	0.102	0.155	1.04	0.300	0.390
right transverse temporal area	0.26	0.032	0.057	0.48	2.36e-05	7.50e-05	1.75	0.080	0.127
right insula area	0.22	0.066	0.107	0.21	0.083	0.131	-0.12	0.901	0.929
left banks of superior temporal sulcus volume	0.26	0.033	0.059	0.54	1.26e-06	4.97e-06	2.65	0.008	0.016
left caudal anterior cingulate volume	0.30	0.011	0.021	0.13	0.301	0.392	-2.00	0.046	0.078
left caudal middle frontal volume	0.40	6.72e-04	0.002	0.52	3.15e-06	1.17e-05	1.06	0.289	0.380
left cuneus volume	0.31	0.010	0.020	0.45	8.19e-05	2.39e-04	1.05	0.292	0.382
left entorhinal volume	-0.10	0.405	0.503	0.04	0.756	0.817	0.83	0.407	0.504
left fusiform volume	0.31	0.009	0.018	0.42	2.65e-04	7.20e-04	0.99	0.325	0.419
left inferior parietal volume	0.57	3.03e-07	1.31e-06	0.64	2.13e-09	1.21e-08	0.83	0.406	0.503
left inferior temporal volume	0.46	6.67e-05	1.97e-04	0.59	8.32e-08	3.92e-07	1.31	0.191	0.266
left isthmus cingulate volume	0.31	0.010	0.020	0.16	0.179	0.252	-1.04	0.299	0.389
left lateral occipital volume	0.39	7.49e-04	0.002	0.49	1.88e-05	6.12e-05	0.72	0.471	0.565
left lateral orbitofrontal volume	0.48	2.98e-05	9.31e-05	0.56	4.92e-07	2.06e-06	0.80	0.423	0.518
left lingual volume	0.12	0.312	0.403	0.44	1.31e-04	3.72e-04	2.06	0.039	0.068
left medial orbitofrontal volume	0.30	0.012	0.024	0.21	0.088	0.138	-0.78	0.434	0.528
left middle temporal volume	0.31	0.010	0.020	0.38	0.001	0.003	0.62	0.536	0.627
left parahippocampal volume	-0.04	0.721	0.787	0.08	0.521	0.613	0.78	0.436	0.530
left paracentral volume	0.32	0.006	0.013	0.55	1.03e-06	4.10e-06	1.94	0.053	0.088
left pars triangularis volume	0.47	4.51e-05	1.37e-04	0.44	1.52e-04	4.30e-04	-0.34	0.733	0.798
left pars opercularis volume	0.35	0.003	0.006	0.46	7.18e-05	2.12e-04	0.85	0.396	0.495
left pars orbitalis volume	0.54	1.27e-06	4.99e-06	0.59	7.73e-08	3.66e-07	0.58	0.561	0.651
left pericalcarine volume	0.32	0.007	0.014	0.40	7.13e-04	0.002	0.51	0.610	0.692
left postcentral volume	0.23	0.053	0.088	0.49	1.74e-05	5.70e-05	2.04	0.042	0.072
left posterior cingulate volume	0.27	0.023	0.042	0.24	0.041	0.071	-0.27	0.787	0.844
left precentral volume	0.36	0.002	0.006	0.53	3.04e-06	1.14e-05	1.58	0.113	0.170
left precuneus volume	0.29	0.015	0.029	0.44	1.66e-04	4.63e-04	1.07	0.285	0.375
left rostral anterior cingulate volume	0.39	8.49e-04	0.002	0.26	0.028	0.050	-1.21	0.224	0.307
left rostral middle frontal volume	0.51	7.43e-06	2.59e-05	0.41	4.46e-04	0.001	-1.12	0.263	0.351
left superior frontal volume	0.38	0.001	0.003	0.39	9.43e-04	0.002	0.09	0.925	0.947
left superior parietal volume	0.47	4.29e-05	1.31e-04	0.65	1.50e-09	8.87e-09	1.87	0.061	0.100
left superior temporal volume	0.21	0.087	0.136	0.53	2.29e-06	8.68e-06	2.85	0.004	0.010
left supramarginal volume	0.42	2.70e-04	7.31e-04	0.58	1.10e-07	5.10e-07	1.88	0.059	0.098
left frontal pole volume	-0.04	0.754	0.816	-0.08	0.502	0.596	-0.26	0.794	0.849

left temporal pole volume	-0.08	0.495	0.589	0.10	0.397	0.495	1.04	0.299	0.389
left transverse temporal volume	0.11	0.380	0.479	0.35	0.003	0.006	1.85	0.064	0.105
left insula volume	0.42	2.65e-04	7.20e-04	0.55	7.20e-07	2.95e-06	1.31	0.192	0.266
right banks of superior temporal sulcus volume	0.43	1.89e-04	5.23e-04	0.43	2.20e-04	6.03e-04	-0.04	0.968	0.977
right caudal anterior cingulate volume	0.64	2.45e-09	1.39e-08	0.53	2.17e-06	8.26e-06	-1.51	0.131	0.192
right caudal middle frontal volume	0.47	4.19e-05	1.28e-04	0.47	3.35e-05	1.04e-04	0.05	0.962	0.974
right cuneus volume	0.16	0.179	0.252	0.28	0.018	0.035	0.81	0.417	0.512
right entorhinal volume	-0.24	0.042	0.072	0.06	0.610	0.692	2.19	0.028	0.051
right fusiform volume	0.32	0.007	0.014	0.46	5.43e-05	1.63e-04	1.12	0.263	0.351
right inferior parietal volume	0.48	2.84e-05	8.93e-05	0.58	1.78e-07	7.99e-07	1.11	0.266	0.355
right inferior temporal volume	0.53	2.75e-06	1.03e-05	0.58	1.65e-07	7.44e-07	0.51	0.613	0.694
right isthmus cingulate volume	0.19	0.112	0.169	0.22	0.072	0.116	0.21	0.831	0.879
right lateral occipital volume	0.57	3.13e-07	1.36e-06	0.65	1.14e-09	6.80e-09	0.93	0.350	0.447
right lateral orbitofrontal volume	0.49	1.86e-05	6.06e-05	0.30	0.013	0.024	-1.51	0.131	0.192
right lingual volume	0.04	0.753	0.815	0.39	8.34e-04	0.002	2.53	0.012	0.023
right medial orbitofrontal volume	0.28	0.020	0.038	0.25	0.036	0.063	-0.21	0.830	0.878
right middle temporal volume	0.38	0.001	0.003	0.17	0.168	0.239	-2.23	0.026	0.047
right parahippocampal volume	0.12	0.309	0.400	0.14	0.245	0.332	0.10	0.918	0.941
right paracentral volume	0.49	1.46e-05	4.86e-05	0.45	9.06e-05	2.63e-04	-0.43	0.667	0.740
right pars triangularis volume	0.44	1.41e-04	3.98e-04	0.60	4.16e-08	2.07e-07	1.94	0.052	0.087
right pars opercularis volume	0.48	3.10e-05	9.63e-05	0.32	0.007	0.014	-1.39	0.166	0.237
right pars orbitalis volume	0.38	0.001	0.003	0.42	3.32e-04	8.88e-04	0.39	0.694	0.763
right pericalcarine volume	0.32	0.006	0.013	0.36	0.002	0.005	0.28	0.781	0.839
right postcentral volume	0.50	1.04e-05	3.53e-05	0.50	9.54e-06	3.28e-05	0.02	0.984	0.989
right posterior cingulate volume	0.37	0.002	0.004	0.33	0.005	0.011	-0.43	0.664	0.739
right precentral volume	0.50	1.12e-05	3.80e-05	0.52	4.93e-06	1.78e-05	0.18	0.858	0.898
right precuneus volume	0.31	0.008	0.017	0.37	0.002	0.004	0.47	0.637	0.715
right rostral anterior cingulate volume	0.53	2.12e-06	8.07e-06	0.58	1.85e-07	8.26e-07	0.55	0.580	0.667
right rostral middle frontal volume	0.31	0.008	0.016	0.27	0.026	0.047	-0.47	0.636	0.715
right superior frontal volume	0.47	3.63e-05	1.12e-04	0.40	5.72e-04	0.001	-0.80	0.422	0.517
right superior parietal volume	0.28	0.020	0.037	0.34	0.004	0.009	0.55	0.583	0.670
right superior temporal volume	0.53	2.03e-06	7.76e-06	0.39	9.15e-04	0.002	-1.47	0.142	0.207
right supramarginal volume	0.39	9.04e-04	0.002	0.40	7.07e-04	0.002	0.07	0.942	0.957
right frontal pole volume	0.03	0.791	0.847	0.08	0.500	0.595	0.35	0.727	0.792
right temporal pole volume	0.11	0.365	0.463	0.12	0.333	0.427	0.04	0.967	0.977

right transverse temporal volume	0.23	0.055	0.091	0.56	4.74e-07	2.00e-06	2.65	0.008	0.016
right insula volume	0.23	0.052	0.087	0.32	0.006	0.013	0.88	0.378	0.477
left lateral ventricle subcortical volume	0.96	9.47e-38	2.58e-35	0.96	3.70e-38	1.15e-35	0.23	0.816	0.867
left inf lat vent subcortical volume	0.61	1.48e-08	7.71e-08	0.56	4.09e-07	1.75e-06	-0.53	0.594	0.679
left cerebellum white matter subcortical volume	0.50	9.03e-06	3.12e-05	0.47	3.52e-05	1.09e-04	-0.33	0.738	0.802
left cerebellum cortex subcortical volume	0.74	3.75e-13	3.53e-12	0.77	5.39e-15	6.56e-14	0.69	0.491	0.585
left thalamus proper subcortical volume	0.41	5.04e-04	0.001	0.55	8.70e-07	3.52e-06	1.57	0.115	0.173
left caudate subcortical volume	0.49	1.43e-05	4.79e-05	0.44	1.61e-04	4.52e-04	-0.67	0.505	0.598
left putamen subcortical volume	0.38	0.001	0.003	0.30	0.011	0.021	-0.71	0.476	0.570
left pallidum subcortical volume	0.27	0.025	0.046	0.33	0.005	0.011	0.47	0.638	0.716
3rd ventricle subcortical volume	0.72	1.65e-12	1.43e-11	0.70	1.44e-11	1.10e-10	-0.52	0.600	0.683
4th ventricle subcortical volume	0.62	7.64e-09	4.15e-08	0.74	1.52e-13	1.49e-12	1.98	0.048	0.081
brain stem subcortical volume	0.79	3.29e-16	4.97e-15	0.82	1.84e-18	4.26e-17	0.98	0.326	0.420
left hippocampus subcortical volume	0.25	0.038	0.067	0.56	5.50e-07	2.29e-06	2.68	0.007	0.015
left amygdala subcortical volume	0.34	0.004	0.009	0.28	0.018	0.033	-0.49	0.621	0.702
csf subcortical volume	0.59	7.99e-08	3.78e-07	0.62	8.13e-09	4.37e-08	0.82	0.415	0.511
left accumbens area subcortical volume	0.01	0.932	0.950	-0.02	0.856	0.896	-0.26	0.799	0.853
left ventral diencephalon subcortical volume	0.49	1.68e-05	5.52e-05	0.66	3.62e-10	2.30e-09	2.14	0.032	0.058
left vessel subcortical volume	0.02	0.853	0.895	0.02	0.839	0.885	0.01	0.989	0.992
left choroid plexus subcortical volume	0.52	3.10e-06	1.16e-05	0.51	6.21e-06	2.21e-05	-0.19	0.847	0.891
right lateral ventricle subcortical volume	0.92	3.67e-29	6.67e-27	0.95	1.34e-35	3.25e-33	3.35	7.95e-04	0.002
right inf lat vent subcortical volume	0.57	3.16e-07	1.37e-06	0.73	1.19e-12	1.05e-11	2.13	0.033	0.058
cerebellum white matter subcortical volume	0.67	1.51e-10	1.01e-09	0.57	2.57e-07	1.13e-06	-1.54	0.125	0.185
cerebellum cortex subcortical volume	0.69	4.46e-11	3.11e-10	0.81	2.86e-17	5.23e-16	2.84	0.005	0.010
right thalamus proper subcortical volume	0.30	0.013	0.025	0.44	1.38e-04	3.91e-04	1.49	0.136	0.199
right caudate subcortical volume	0.25	0.040	0.070	0.40	5.52e-04	0.001	1.49	0.136	0.199
right putamen subcortical volume	0.29	0.014	0.027	0.50	1.22e-05	4.13e-05	1.70	0.089	0.138
right pallidum subcortical volume	0.24	0.043	0.074	0.14	0.243	0.330	-0.64	0.520	0.613
right hippocampus subcortical volume	0.18	0.128	0.189	0.48	2.55e-05	8.06e-05	2.40	0.016	0.031
right amygdala subcortical volume	0.24	0.048	0.081	0.28	0.021	0.039	0.27	0.790	0.847
right accumbens area subcortical volume	0.19	0.122	0.181	0.12	0.336	0.430	-0.48	0.633	0.712
right ventral diencephalon subcortical volume	0.59	1.05e-07	4.86e-07	0.52	3.93e-06	1.44e-05	-0.87	0.383	0.482
right vessel subcortical volume	-0.05	0.666	0.740	0.81	2.35e-17	4.42e-16	6.44	1.17e-10	7.82e-10
right choroid plexus subcortical volume	0.50	1.01e-05	3.45e-05	0.54	1.12e-06	4.46e-06	0.51	0.607	0.690

optic chiasm subcortical volume	0.02	0.891	0.921	0.06	0.627	0.707	0.32	0.752	0.815
corpus callosum posterior subcortical volume	0.44	1.58e-04	4.42e-04	0.51	6.46e-06	2.30e-05	1.03	0.301	0.392
corpus callosum mid posterior subcortical volume	0.17	0.152	0.219	0.18	0.128	0.189	0.15	0.884	0.916
corpus callosum central subcortical volume	0.31	0.009	0.018	0.19	0.118	0.177	-1.59	0.112	0.169
corpus callosum mid anterior subcortical volume	0.34	0.004	0.010	0.21	0.087	0.136	-1.65	0.100	0.153
corpus callosum anterior subcortical volume	0.47	4.15e-05	1.27e-04	0.75	1.30e-13	1.29e-12	4.04	5.46e-05	1.63e-04

STable 5. Intra-class correlations (ICCs) of regional measurements from standard axial versus standard multi-orientation 64mT scans with 3T scans. Differences between ICC strengths were tested using Steiger's Z. A positive Z-value indicates that multi-orientation regions were more strongly correlated to 3T scans than axial-only regions. Analyses that are statistically significant after correction for multiple comparisons are in bold.

Measurement	Standard Axial 64mT ICC with 3T			Standard Multi-Orientation 64mT ICC with 3T			Steiger		
	ICC	p	q	ICC	p	q	z	p	q
left banks of superior temporal sulcus thickness	-0.20	0.952	0.977	-0.19	0.944	0.973	0.07	0.947	0.975
left caudal anterior cingulate thickness	0.01	0.462	0.572	-0.07	0.724	0.809	-0.59	0.554	0.656
left caudal middle frontal thickness	0.17	0.079	0.130	-0.04	0.638	0.732	-1.47	0.142	0.215
left cuneus thickness	0.09	0.239	0.336	-0.01	0.546	0.647	-0.71	0.480	0.587
left entorhinal thickness	-5.2e-03	0.517	0.621	-0.16	0.908	0.948	-0.90	0.366	0.476
left fusiform thickness	-0.12	0.847	0.907	-0.16	0.904	0.946	-0.27	0.788	0.862
left inferior parietal thickness	-0.15	0.898	0.941	-0.19	0.941	0.972	-0.30	0.763	0.842
left inferior temporal thickness	0.07	0.293	0.396	-0.11	0.812	0.879	-1.31	0.190	0.275
left isthmus cingulate thickness	-0.02	0.577	0.678	-0.18	0.931	0.966	-0.98	0.329	0.434
left lateral occipital thickness	7.3e-03	0.476	0.584	-7.0e-03	0.523	0.626	-0.13	0.900	0.943
left lateral orbitofrontal thickness	-0.03	0.609	0.705	0.02	0.444	0.556	0.40	0.690	0.780
left lingual thickness	0.07	0.274	0.376	-0.13	0.860	0.912	-1.33	0.183	0.266
left medial orbitofrontal thickness	-0.29	0.992	0.996	-0.19	0.948	0.975	0.76	0.447	0.559
left middle temporal thickness	-0.19	0.940	0.972	-0.27	0.989	0.995	-0.75	0.453	0.564
left parahippocampal thickness	0.01	0.454	0.565	0.20	0.051	0.087	1.12	0.261	0.361
left paracentral thickness	0.05	0.346	0.454	0.11	0.179	0.261	0.39	0.697	0.783
left pars triangularis thickness	0.29	0.007	0.016	-0.03	0.598	0.696	-2.01	0.044	0.078
left pars opercularis thickness	-0.12	0.842	0.903	-0.09	0.773	0.850	0.23	0.816	0.883
left pars orbitalis thickness	-0.19	0.943	0.973	-0.26	0.984	0.994	-0.45	0.654	0.746
left pericalcarine thickness	0.07	0.274	0.376	0.02	0.419	0.531	-0.33	0.738	0.820
left postcentral thickness	0.12	0.151	0.226	0.14	0.119	0.186	0.10	0.920	0.958
left posterior cingulate thickness	-0.13	0.863	0.913	-0.13	0.857	0.911	0.02	0.981	0.993
left precentral thickness	0.08	0.244	0.342	0.08	0.246	0.344	-4.3e-03	0.997	0.997
left precuneus thickness	0.06	0.305	0.408	-0.02	0.574	0.676	-0.67	0.506	0.611
left rostral anterior cingulate thickness	-0.24	0.978	0.991	-0.14	0.878	0.922	0.74	0.461	0.571
left rostral middle frontal thickness	-0.01	0.542	0.643	-0.25	0.982	0.993	-1.90	0.058	0.099
left superior frontal thickness	0.02	0.421	0.534	-0.06	0.695	0.782	-0.52	0.604	0.701
left superior parietal thickness	0.04	0.373	0.485	-0.03	0.586	0.684	-0.39	0.696	0.783
left superior temporal thickness	-0.20	0.952	0.977	-0.23	0.973	0.989	-0.25	0.804	0.873
left supramarginal thickness	0.02	0.438	0.550	-0.31	0.995	0.997	-2.27	0.023	0.043

left frontal pole thickness	-0.22	0.968	0.986	-0.09	0.784	0.859	0.87	0.384	0.495
left temporal pole thickness	-0.10	0.799	0.869	0.07	0.287	0.390	0.99	0.324	0.428
left transverse temporal thickness	-0.25	0.980	0.993	-0.27	0.990	0.995	-0.21	0.831	0.894
left insula thickness	-0.06	0.699	0.785	-0.06	0.692	0.781	0.02	0.986	0.995
right banks of superior temporal sulcus thickness	-0.10	0.789	0.862	-0.18	0.928	0.963	-0.53	0.599	0.697
right caudal anterior cingulate thickness	-0.13	0.859	0.912	-0.22	0.966	0.985	-0.68	0.495	0.601
right caudal middle frontal thickness	0.05	0.344	0.452	-0.14	0.878	0.922	-1.24	0.214	0.306
right cuneus thickness	0.07	0.277	0.379	-0.02	0.581	0.680	-0.65	0.518	0.622
right entorhinal thickness	-0.10	0.803	0.872	-0.21	0.962	0.982	-0.66	0.512	0.617
right fusiform thickness	-0.14	0.882	0.925	-0.13	0.868	0.916	0.06	0.954	0.977
right inferior parietal thickness	-0.17	0.923	0.960	-0.12	0.850	0.907	0.50	0.617	0.711
right inferior temporal thickness	-0.10	0.801	0.871	-0.13	0.854	0.910	-0.18	0.855	0.911
right isthmus cingulate thickness	-0.01	0.537	0.639	-0.11	0.824	0.889	-0.66	0.511	0.615
right lateral occipital thickness	0.13	0.139	0.212	0.07	0.285	0.387	-0.56	0.574	0.676
right lateral orbitofrontal thickness	-0.04	0.637	0.731	-0.10	0.794	0.866	-0.44	0.663	0.755
right lingual thickness	-0.03	0.610	0.705	-0.23	0.971	0.988	-1.35	0.178	0.259
right medial orbitofrontal thickness	-0.31	0.996	0.997	-0.21	0.961	0.982	0.87	0.386	0.496
right middle temporal thickness	-0.27	0.988	0.995	-0.27	0.987	0.995	0.02	0.981	0.993
right parahippocampal thickness	0.08	0.252	0.350	0.13	0.140	0.213	0.28	0.783	0.858
right paracentral thickness	0.14	0.125	0.194	0.13	0.146	0.220	-0.08	0.933	0.966
right pars triangularis thickness	0.19	0.059	0.100	-0.01	0.535	0.637	-1.17	0.240	0.337
right pars opercularis thickness	-0.04	0.638	0.732	0.04	0.359	0.469	0.70	0.486	0.592
right pars orbitalis thickness	2.8e-03	0.491	0.597	-0.10	0.795	0.867	-0.76	0.449	0.561
right pericalcarine thickness	-0.02	0.572	0.674	-0.08	0.736	0.818	-0.34	0.735	0.817
right postcentral thickness	0.15	0.113	0.177	-0.13	0.858	0.911	-1.71	0.087	0.141
right posterior cingulate thickness	-0.07	0.731	0.815	-0.19	0.942	0.973	-0.94	0.347	0.455
right precentral thickness	0.16	0.092	0.148	5.5e-03	0.482	0.589	-1.15	0.252	0.350
right precuneus thickness	0.06	0.299	0.402	-0.12	0.836	0.897	-1.45	0.147	0.221
right rostral anterior cingulate thickness	-0.30	0.994	0.997	-0.10	0.806	0.874	1.43	0.154	0.229
right rostral middle frontal thickness	-0.18	0.932	0.966	-0.17	0.926	0.962	0.04	0.964	0.984
right superior frontal thickness	0.16	0.098	0.157	2.6e-03	0.491	0.597	-1.16	0.247	0.345
right superior parietal thickness	0.10	0.200	0.288	0.15	0.103	0.164	0.41	0.685	0.775
right superior temporal thickness	-0.17	0.922	0.959	-0.28	0.991	0.996	-0.80	0.422	0.535
right supramarginal thickness	0.18	0.062	0.105	-0.29	0.993	0.996	-3.23	0.001	0.003

right frontal pole thickness	-0.09	0.780	0.856	-0.12	0.843	0.903	-0.19	0.852	0.908
right temporal pole thickness	0.10	0.213	0.304	-0.13	0.858	0.911	-1.34	0.180	0.263
right transverse temporal thickness	-0.02	0.572	0.674	-0.20	0.953	0.977	-1.22	0.222	0.315
right insula thickness	-0.06	0.678	0.768	-0.05	0.652	0.745	0.05	0.957	0.979
left banks of superior temporal sulcus area	0.34	0.002	0.004	0.59	3.30e-08	1.68e-07	2.24	0.025	0.047
left caudal anterior cingulate area	0.28	0.008	0.017	0.17	0.075	0.124	-1.35	0.177	0.259
left caudal middle frontal area	0.29	0.007	0.015	0.45	4.33e-05	1.37e-04	1.32	0.188	0.273
left cuneus area	0.41	2.15e-04	6.02e-04	0.44	5.45e-05	1.69e-04	0.25	0.799	0.869
left entorhinal area	-0.06	0.692	0.781	0.05	0.331	0.436	0.69	0.493	0.599
left fusiform area	0.31	0.005	0.010	0.38	5.97e-04	0.002	0.53	0.593	0.691
left inferior parietal area	0.57	1.03e-07	4.99e-07	0.68	3.24e-11	2.35e-10	1.34	0.181	0.263
left inferior temporal area	0.42	1.25e-04	3.64e-04	0.56	2.09e-07	9.67e-07	1.35	0.176	0.258
left isthmus cingulate area	0.33	0.002	0.005	0.17	0.078	0.129	-1.08	0.279	0.381
left lateral occipital area	0.32	0.003	0.007	0.53	1.25e-06	5.14e-06	1.47	0.141	0.214
left lateral orbitofrontal area	0.51	2.90e-06	1.13e-05	0.61	7.14e-09	3.95e-08	1.17	0.243	0.340
left lingual area	0.24	0.023	0.042	0.40	2.89e-04	7.88e-04	1.02	0.309	0.412
left medial orbitofrontal area	0.48	1.09e-05	3.84e-05	0.52	1.43e-06	5.84e-06	0.43	0.670	0.760
left middle temporal area	0.45	4.19e-05	1.32e-04	0.39	4.21e-04	0.001	-0.55	0.583	0.682
left parahippocampal area	-0.16	0.906	0.947	0.05	0.353	0.462	1.23	0.218	0.311
left paracentral area	0.34	0.002	0.004	0.68	2.52e-11	1.86e-10	3.16	0.002	0.004
left pars triangularis area	0.40	3.23e-04	8.75e-04	0.39	3.39e-04	9.16e-04	-0.01	0.989	0.995
left pars opercularis area	0.45	4.43e-05	1.39e-04	0.44	6.32e-05	1.93e-04	-0.07	0.944	0.973
left pars orbitalis area	0.59	4.06e-08	2.04e-07	0.51	3.00e-06	1.16e-05	-0.78	0.438	0.550
left pericalcarine area	0.33	0.002	0.006	0.38	5.62e-04	0.001	0.34	0.731	0.815
left postcentral area	0.20	0.044	0.078	0.23	0.026	0.047	0.20	0.839	0.900
left posterior cingulate area	0.30	0.006	0.013	0.37	8.03e-04	0.002	0.77	0.442	0.554
left precentral area	0.35	0.001	0.003	0.46	3.05e-05	9.90e-05	0.91	0.365	0.475
left precuneus area	0.31	0.004	0.010	0.42	1.21e-04	3.54e-04	0.86	0.392	0.503
left rostral anterior cingulate area	0.33	0.003	0.006	0.26	0.016	0.030	-0.68	0.498	0.604
left rostral middle frontal area	0.56	2.02e-07	9.38e-07	0.63	2.14e-09	1.27e-08	0.88	0.381	0.492
left superior frontal area	0.52	1.89e-06	7.54e-06	0.63	2.76e-09	1.61e-08	1.29	0.198	0.285
left superior parietal area	0.37	7.83e-04	0.002	0.48	1.03e-05	3.67e-05	0.93	0.350	0.459
left superior temporal area	0.29	0.008	0.016	0.49	8.71e-06	3.14e-05	1.66	0.097	0.155
left supramarginal area	0.50	3.88e-06	1.47e-05	0.48	1.12e-05	3.92e-05	-0.23	0.818	0.884
left frontal pole area	0.24	0.020	0.038	0.12	0.151	0.226	-0.73	0.467	0.577

left temporal pole area	-0.06	0.693	0.781	0.07	0.274	0.376	0.74	0.459	0.569
left transverse temporal area	0.13	0.145	0.219	0.44	7.45e-05	2.25e-04	2.17	0.030	0.054
left insula area	0.27	0.012	0.024	0.27	0.013	0.025	-0.02	0.981	0.993
right banks of superior temporal sulcus area	0.39	3.81e-04	0.001	0.32	0.003	0.007	-0.61	0.539	0.640
right caudal anterior cingulate area	0.49	8.19e-06	2.97e-05	0.53	1.04e-06	4.35e-06	0.57	0.567	0.671
right caudal middle frontal area	0.40	2.76e-04	7.58e-04	0.46	3.32e-05	1.07e-04	0.52	0.605	0.701
right cuneus area	0.17	0.073	0.122	0.33	0.003	0.006	1.11	0.266	0.366
right entorhinal area	-0.13	0.863	0.913	0.12	0.169	0.250	1.72	0.086	0.140
right fusiform area	0.43	1.03e-04	3.01e-04	0.58	6.15e-08	3.02e-07	1.35	0.177	0.259
right inferior parietal area	0.49	6.16e-06	2.28e-05	0.57	1.42e-07	6.76e-07	0.79	0.427	0.538
right inferior temporal area	0.52	1.36e-06	5.57e-06	0.59	3.37e-08	1.71e-07	0.74	0.459	0.569
right isthmus cingulate area	0.17	0.072	0.121	0.31	0.004	0.009	1.17	0.244	0.341
right lateral occipital area	0.54	6.37e-07	2.77e-06	0.67	9.85e-11	6.81e-10	1.35	0.175	0.258
right lateral orbitofrontal area	0.51	3.26e-06	1.25e-05	0.48	1.25e-05	4.34e-05	-0.26	0.797	0.868
right lingual area	0.10	0.209	0.299	0.49	9.01e-06	3.24e-05	2.96	0.003	0.007
right medial orbitofrontal area	0.43	1.05e-04	3.09e-04	0.41	2.07e-04	5.82e-04	-0.16	0.870	0.917
right middle temporal area	0.45	4.27e-05	1.35e-04	0.22	0.036	0.064	-2.25	0.024	0.045
right parahippocampal area	0.02	0.433	0.545	0.15	0.112	0.176	0.79	0.429	0.541
right paracentral area	0.36	9.93e-04	0.002	0.47	1.71e-05	5.82e-05	1.03	0.301	0.403
right pars triangularis area	0.42	1.46e-04	4.19e-04	0.54	7.53e-07	3.22e-06	1.26	0.208	0.298
right pars opercularis area	0.48	1.10e-05	3.85e-05	0.38	4.63e-04	0.001	-0.82	0.413	0.525
right pars orbitalis area	0.35	0.001	0.003	0.49	5.83e-06	2.17e-05	1.35	0.175	0.258
right pericalcarine area	0.44	6.86e-05	2.09e-04	0.28	0.009	0.019	-1.47	0.141	0.214
right postcentral area	0.43	7.50e-05	2.26e-04	0.45	3.66e-05	1.17e-04	0.19	0.850	0.907
right posterior cingulate area	0.32	0.003	0.007	0.35	0.001	0.003	0.37	0.714	0.799
right precentral area	0.48	1.16e-05	4.03e-05	0.48	1.06e-05	3.75e-05	0.02	0.984	0.994
right precuneus area	0.43	8.69e-05	2.58e-04	0.43	9.91e-05	2.92e-04	-0.03	0.977	0.991
right rostral anterior cingulate area	0.41	1.91e-04	5.40e-04	0.40	2.67e-04	7.38e-04	-0.12	0.907	0.948
right rostral middle frontal area	0.40	2.73e-04	7.50e-04	0.51	3.31e-06	1.27e-05	1.09	0.276	0.378
right superior frontal area	0.51	3.49e-06	1.34e-05	0.62	5.09e-09	2.86e-08	1.42	0.157	0.233
right superior parietal area	0.21	0.040	0.071	0.23	0.027	0.050	0.15	0.881	0.925
right superior temporal area	0.48	1.18e-05	4.10e-05	0.35	0.001	0.003	-1.07	0.286	0.388
right supramarginal area	0.27	0.011	0.023	0.28	0.009	0.019	0.07	0.948	0.975
right frontal pole area	0.26	0.014	0.028	0.20	0.050	0.086	-0.49	0.625	0.720

right temporal pole area	4.7e-03	0.485	0.591	0.14	0.129	0.199	0.71	0.475	0.584
right transverse temporal area	0.25	0.016	0.031	0.48	1.03e-05	3.67e-05	1.76	0.079	0.130
right insula area	0.16	0.087	0.142	0.19	0.060	0.101	0.23	0.818	0.884
left banks of superior temporal sulcus volume	0.25	0.017	0.033	0.53	9.84e-07	4.15e-06	2.55	0.011	0.022
left caudal anterior cingulate volume	0.29	0.008	0.016	0.12	0.160	0.238	-1.87	0.062	0.105
left caudal middle frontal volume	0.34	0.002	0.004	0.48	9.63e-06	3.43e-05	1.14	0.254	0.352
left cuneus volume	0.30	0.005	0.011	0.45	3.77e-05	1.20e-04	1.05	0.292	0.395
left entorhinal volume	-0.10	0.798	0.868	0.04	0.379	0.490	0.82	0.412	0.524
left fusiform volume	0.31	0.005	0.010	0.41	1.90e-04	5.39e-04	0.89	0.375	0.486
left inferior parietal volume	0.53	1.21e-06	5.01e-06	0.59	2.84e-08	1.46e-07	0.68	0.494	0.600
left inferior temporal volume	0.45	4.57e-05	1.43e-04	0.56	2.36e-07	1.08e-06	1.06	0.288	0.390
left isthmus cingulate volume	0.30	0.006	0.013	0.16	0.089	0.145	-0.96	0.337	0.444
left lateral occipital volume	0.39	4.22e-04	0.001	0.49	8.54e-06	3.09e-05	0.76	0.450	0.561
left lateral orbitofrontal volume	0.47	2.19e-05	7.34e-05	0.50	4.89e-06	1.84e-05	0.31	0.757	0.836
left lingual volume	0.12	0.155	0.231	0.44	5.97e-05	1.84e-04	2.06	0.039	0.070
left medial orbitofrontal volume	0.28	0.009	0.018	0.20	0.044	0.078	-0.65	0.513	0.617
left middle temporal volume	0.30	0.006	0.013	0.36	0.001	0.003	0.56	0.578	0.678
left parahippocampal volume	-0.03	0.603	0.700	0.07	0.286	0.388	0.64	0.524	0.627
left paracentral volume	0.31	0.004	0.009	0.52	2.09e-06	8.29e-06	1.74	0.082	0.135
left pars triangularis volume	0.46	3.10e-05	1.00e-04	0.37	6.37e-04	0.002	-0.86	0.388	0.499
left pars opercularis volume	0.35	0.001	0.003	0.45	3.75e-05	1.20e-04	0.83	0.408	0.521
left pars orbitalis volume	0.53	7.98e-07	3.40e-06	0.53	1.13e-06	4.70e-06	-0.07	0.940	0.972
left pericalcarine volume	0.31	0.004	0.009	0.39	3.43e-04	9.26e-04	0.54	0.586	0.684
left postcentral volume	0.22	0.034	0.061	0.46	2.29e-05	7.65e-05	1.93	0.054	0.093
left posterior cingulate volume	0.27	0.011	0.022	0.24	0.020	0.038	-0.27	0.789	0.862
left precentral volume	0.35	0.001	0.003	0.51	2.25e-06	8.87e-06	1.49	0.135	0.206
left precuneus volume	0.27	0.011	0.022	0.39	4.24e-04	0.001	0.82	0.412	0.525
left rostral anterior cingulate volume	0.32	0.003	0.007	0.21	0.041	0.072	-1.08	0.280	0.381
left rostral middle frontal volume	0.46	2.40e-05	8.00e-05	0.36	8.86e-04	0.002	-1.08	0.279	0.381
left superior frontal volume	0.36	0.001	0.003	0.35	0.001	0.003	-0.03	0.979	0.992
left superior parietal volume	0.46	2.27e-05	7.58e-05	0.58	7.06e-08	3.45e-07	1.10	0.270	0.372
left superior temporal volume	0.19	0.055	0.094	0.48	1.12e-05	3.91e-05	2.48	0.013	0.026
left supramarginal volume	0.38	5.15e-04	0.001	0.52	1.52e-06	6.18e-06	1.57	0.117	0.183
left frontal pole volume	-0.04	0.624	0.718	-0.08	0.744	0.825	-0.25	0.805	0.874
left temporal pole volume	-0.07	0.707	0.792	0.09	0.234	0.330	0.86	0.392	0.503

left transverse temporal volume	0.08	0.243	0.340	0.35	0.001	0.003	1.91	0.056	0.096
left insula volume	0.41	1.80e-04	5.12e-04	0.55	3.06e-07	1.37e-06	1.40	0.163	0.242
right banks of superior temporal sulcus volume	0.39	3.36e-04	9.07e-04	0.40	2.73e-04	7.50e-04	0.06	0.953	0.977
right caudal anterior cingulate volume	0.58	6.08e-08	2.99e-07	0.47	1.48e-05	5.06e-05	-1.38	0.168	0.248
right caudal middle frontal volume	0.40	3.11e-04	8.47e-04	0.38	6.01e-04	0.002	-0.17	0.866	0.915
right cuneus volume	0.16	0.093	0.150	0.28	0.009	0.018	0.83	0.408	0.521
right entorhinal volume	-0.21	0.961	0.982	0.06	0.314	0.417	1.91	0.056	0.095
right fusiform volume	0.31	0.005	0.011	0.42	1.31e-04	3.80e-04	0.89	0.373	0.485
right inferior parietal volume	0.42	1.33e-04	3.85e-04	0.52	1.96e-06	7.80e-06	1.04	0.297	0.400
right inferior temporal volume	0.47	1.43e-05	4.92e-05	0.55	2.89e-07	1.30e-06	0.75	0.455	0.565
right isthmus cingulate volume	0.18	0.072	0.120	0.21	0.037	0.066	0.33	0.745	0.825
right lateral occipital volume	0.56	1.46e-07	6.91e-07	0.64	1.09e-09	6.59e-09	0.81	0.416	0.528
right lateral orbitofrontal volume	0.49	9.01e-06	3.24e-05	0.28	0.010	0.020	-1.63	0.103	0.164
right lingual volume	0.04	0.381	0.492	0.39	4.26e-04	0.001	2.50	0.012	0.025
right medial orbitofrontal volume	0.27	0.010	0.021	0.25	0.017	0.033	-0.19	0.849	0.907
right middle temporal volume	0.38	5.09e-04	0.001	0.16	0.088	0.143	-2.24	0.025	0.047
right parahippocampal volume	0.09	0.233	0.329	0.13	0.132	0.203	0.28	0.783	0.858
right paracentral volume	0.45	3.43e-05	1.10e-04	0.41	1.77e-04	5.06e-04	-0.42	0.676	0.767
right pars triangularis volume	0.43	8.39e-05	2.50e-04	0.56	2.34e-07	1.07e-06	1.44	0.149	0.223
right pars opercularis volume	0.48	1.40e-05	4.80e-05	0.32	0.004	0.008	-1.41	0.159	0.236
right pars orbitalis volume	0.36	0.001	0.003	0.40	2.85e-04	7.82e-04	0.37	0.714	0.799
right pericalcarine volume	0.32	0.003	0.007	0.36	0.001	0.003	0.29	0.771	0.848
right postcentral volume	0.48	9.43e-06	3.37e-05	0.46	3.01e-05	9.82e-05	-0.29	0.773	0.850
right posterior cingulate volume	0.37	8.09e-04	0.002	0.33	0.003	0.006	-0.45	0.656	0.748
right precentral volume	0.48	1.06e-05	3.74e-05	0.45	3.67e-05	1.17e-04	-0.29	0.774	0.850
right precuneus volume	0.31	0.004	0.010	0.34	0.002	0.005	0.22	0.829	0.893
right rostral anterior cingulate volume	0.40	2.69e-04	7.42e-04	0.46	2.79e-05	9.17e-05	0.68	0.499	0.604
right rostral middle frontal volume	0.26	0.015	0.030	0.22	0.033	0.061	-0.36	0.717	0.803
right superior frontal volume	0.43	8.13e-05	2.44e-04	0.34	0.002	0.004	-1.01	0.311	0.414
right superior parietal volume	0.25	0.017	0.033	0.27	0.011	0.022	0.17	0.863	0.913
right superior temporal volume	0.53	1.04e-06	4.37e-06	0.38	5.61e-04	0.001	-1.51	0.132	0.203
right supramarginal volume	0.34	0.002	0.004	0.34	0.002	0.005	-0.07	0.943	0.973
right frontal pole volume	0.03	0.396	0.506	0.08	0.250	0.348	0.35	0.730	0.814
right temporal pole volume	0.08	0.242	0.340	0.10	0.207	0.296	0.08	0.939	0.972

right transverse temporal volume	0.23	0.027	0.050	0.56	2.02e-07	9.38e-07	2.64	0.008	0.017
right insula volume	0.20	0.049	0.085	0.31	0.004	0.009	1.06	0.288	0.391
left lateral ventricle subcortical volume	0.95	2.89e-36	7.86e-34	0.95	1.98e-36	6.16e-34	0.10	0.920	0.958
left inf lat vent subcortical volume	0.53	9.80e-07	4.14e-06	0.49	7.89e-06	2.87e-05	-0.39	0.697	0.784
left cerebellum white matter subcortical volume	0.44	6.51e-05	1.99e-04	0.38	4.94e-04	0.001	-0.59	0.558	0.660
left cerebellum cortex subcortical volume	0.73	2.57e-13	2.51e-12	0.76	1.16e-14	1.35e-13	0.51	0.612	0.707
left thalamus proper subcortical volume	0.39	4.05e-04	0.001	0.53	1.03e-06	4.32e-06	1.52	0.128	0.198
left caudate subcortical volume	0.47	1.52e-05	5.19e-05	0.43	8.53e-05	2.53e-04	-0.48	0.632	0.726
left putamen subcortical volume	0.38	5.65e-04	0.001	0.30	0.005	0.012	-0.71	0.476	0.584
left pallidum subcortical volume	0.26	0.016	0.030	0.33	0.003	0.006	0.52	0.601	0.698
3rd ventricle subcortical volume	0.69	2.00e-11	1.53e-10	0.67	7.56e-11	5.34e-10	-0.34	0.731	0.815
4th ventricle subcortical volume	0.60	1.65e-08	8.77e-08	0.69	1.67e-11	1.30e-10	1.36	0.175	0.258
brain stem subcortical volume	0.78	2.74e-16	4.29e-15	0.82	6.80e-19	1.70e-17	1.12	0.261	0.361
left hippocampus subcortical volume	0.17	0.073	0.121	0.40	2.66e-04	7.36e-04	1.82	0.068	0.115
left amygdala subcortical volume	0.27	0.011	0.023	0.22	0.031	0.056	-0.40	0.689	0.778
csf subcortical volume	0.24	0.020	0.038	0.24	0.023	0.042	-0.12	0.907	0.948
left accumbens area subcortical volume	7.6e-03	0.475	0.584	-0.02	0.572	0.674	-0.21	0.830	0.893
left ventral diencephalon subcortical volume	0.48	1.26e-05	4.35e-05	0.66	1.86e-10	1.25e-09	2.21	0.027	0.050
left vessel subcortical volume	8.6e-03	0.472	0.581	3.7e-03	0.488	0.594	-0.03	0.977	0.991
left choroid plexus subcortical volume	0.39	3.28e-04	8.89e-04	0.41	1.83e-04	5.18e-04	0.21	0.833	0.895
right lateral ventricle subcortical volume	0.92	1.53e-29	2.79e-27	0.93	9.24e-33	2.24e-30	1.57	0.116	0.182
right inf lat vent subcortical volume	0.45	4.81e-05	1.50e-04	0.59	2.75e-08	1.42e-07	1.66	0.096	0.154
cerebellum white matter subcortical volume	0.62	4.73e-09	2.67e-08	0.50	4.15e-06	1.57e-05	-1.58	0.114	0.178
cerebellum cortex subcortical volume	0.68	2.26e-11	1.67e-10	0.79	1.74e-16	2.85e-15	2.34	0.019	0.037
right thalamus proper subcortical volume	0.29	0.006	0.014	0.42	1.31e-04	3.79e-04	1.28	0.202	0.290
right caudate subcortical volume	0.19	0.052	0.089	0.38	6.35e-04	0.002	1.63	0.103	0.164
right putamen subcortical volume	0.29	0.007	0.014	0.50	5.55e-06	2.07e-05	1.69	0.091	0.147
right pallidum subcortical volume	0.24	0.022	0.041	0.14	0.124	0.193	-0.64	0.523	0.626
right hippocampus subcortical volume	0.14	0.117	0.184	0.42	1.59e-04	4.55e-04	2.14	0.033	0.059
right amygdala subcortical volume	0.19	0.052	0.089	0.21	0.038	0.067	0.12	0.902	0.944
right accumbens area subcortical volume	0.17	0.079	0.131	0.11	0.176	0.258	-0.39	0.699	0.785
right ventral diencephalon subcortical volume	0.58	5.45e-08	2.70e-07	0.52	1.72e-06	6.94e-06	-0.82	0.411	0.524
right vessel subcortical volume	-7.9e-03	0.526	0.628	0.63	1.51e-09	9.11e-09	4.24	2.24e-05	7.50e-05
right choroid plexus subcortical volume	0.41	1.61e-04	4.63e-04	0.50	5.25e-06	1.97e-05	0.91	0.364	0.474
optic chiasm subcortical volume	0.02	0.446	0.558	0.05	0.330	0.435	0.27	0.787	0.861

corpus callosum posterior subcortical volume	0.34	0.002	0.004	0.47	1.88e-05	6.37e-05	1.59	0.112	0.176
corpus callosum mid posterior subcortical volume	0.13	0.133	0.205	0.16	0.093	0.149	0.34	0.736	0.818
corpus callosum central subcortical volume	0.29	0.007	0.014	0.19	0.058	0.099	-1.20	0.230	0.325
corpus callosum mid anterior subcortical volume	0.33	0.002	0.005	0.20	0.045	0.079	-1.55	0.120	0.188
corpus callosum anterior subcortical volume	0.43	9.05e-05	2.67e-04	0.74	4.82e-14	5.23e-13	4.22	2.41e-05	8.00e-05

STable 6. Correlations of global measurements from SynthSR-processed axial 64mT scans versus SynthSR-processed multi-orientation 64mT scans with 3T scans. Differences between correlation strengths were tested using Steiger's Z. A positive Z-value indicates that the multi-orientation scans were more strongly correlated to 3T scans than the axial-only scans. Analyses that are statistically significant after correction for multiple comparisons are in bold.

Measurement	SynthSR-Processed Axial 64mT Correlations with 3T			SynthSR-Processed Multi-Orientation 64mT Correlations with 3T			Steiger		
	<i>ICC</i>	<i>p</i>	<i>q</i>	<i>ICC</i>	<i>p</i>	<i>q</i>	<i>z</i>	<i>p</i>	<i>q</i>
Total Surface Area	0.90	9.01e-26	5.16e-25	0.87	1.42e-22	6.38e-22	-2.16	0.031	0.042
Mean Cortical Thickness	0.14	0.241	0.286	0.12	0.317	0.363	-0.19	0.853	0.867
Estimated Intracranial Volume	0.85	1.74e-20	6.10e-20	0.84	1.52e-19	5.05e-19	-0.89	0.371	0.410
Subcortical Gray Matter Volume	0.88	4.89e-24	2.57e-23	0.87	3.47e-22	1.46e-21	-0.84	0.400	0.435
Cortical Volume	0.86	1.94e-21	7.17e-21	0.86	5.50e-22	2.17e-21	0.28	0.776	0.802
Cerebral White Matter Volume	0.92	1.23e-28	7.74e-28	0.92	1.20e-28	7.74e-28	5.4e-03	0.996	0.996
Total Brain Volume	0.97	1.15e-43	1.81e-42	0.96	3.64e-38	3.82e-37	-1.94	0.052	0.069

STable 7. Correlations of individual-level differences between low- and high-field scans with motion during low-field scans (framewise displacement). Steiger's Z-tests assessed whether correlations were significantly different between low-field acquisition approaches. Analyses that are statistically significant after correction for multiple comparisons are in bold.

Brain measure	Standard LF Axial-3T x Motion			SynthSR-3T x Motion			Steiger's Test: SynthSR-3T x Motion vs. Standard LF Axial-3T x Motion			Standard LF Multiple-3T x Motion			Steigers Test: Standard LF Multiple-3T x Motion vs. Standard LF Axial-3T x Motion			SynthSR Multiple-3T x Motion			Steiger's test: SynthSR multiple-3T x Motion vs. Standard LF Axial-3T x Motion		
	<i>r</i>	<i>p</i>	<i>q</i>	<i>r</i>	<i>p</i>	<i>q</i>	<i>Z</i>	<i>p</i>	<i>q</i>	<i>r</i>	<i>p</i>	<i>q</i>	<i>Z</i>	<i>p</i>	<i>q</i>	<i>r</i>	<i>p</i>	<i>q</i>	<i>Z</i>	<i>p</i>	<i>q</i>
Total Surface Area	0.03	0.804	0.975	0.05	0.697	0.899	0.12	0.906	0.979	1.7e-03	0.989	0.989	-0.28	0.778	0.975	0.05	0.696	0.899	0.11	0.909	0.979
Mean Cortical Thickness	-0.12	0.325	0.568	-0.14	0.242	0.475	-0.12	0.901	0.979	-0.13	0.297	0.560	-0.06	0.953	0.989	-3.1e-03	0.980	0.989	0.64	0.520	0.750
Estimated Intracranial Volume	0.19	0.113	0.284	-4.1e-03	0.973	0.989	-1.05	0.293	0.560	0.20	0.096	0.268	0.17	0.862	0.979	0.03	0.824	0.975	-0.80	0.423	0.691
Subcortical Gray Matter Volume	0.26	0.029	0.125	0.28	0.020	0.087	0.14	0.887	0.979	0.20	0.102	0.274	-0.72	0.473	0.705	0.25	0.036	0.140	-0.07	0.947	0.989
Cortical Volume	0.03	0.775	0.975	-0.18	0.127	0.296	-2.73	0.006	0.041	-0.08	0.486	0.710	-1.61	0.107	0.277	-0.12	0.305	0.563	-1.87	0.061	0.213
Cerebral White Matter Volume	0.02	0.860	0.979	-0.08	0.532	0.755	-0.84	0.400	0.665	-0.11	0.351	0.603	-2.12	0.034	0.140	0.02	0.891	0.979	-0.03	0.972	0.989
Total Brain Volume	0.20	0.103	0.274	-0.07	0.564	0.767	-1.83	0.067	0.219	0.09	0.435	0.699	-1.27	0.206	0.428	-0.09	0.475	0.705	-1.84	0.065	0.219

Stable 8. Correlations of individual-level differences between low- and high-field scans with participant age. Steiger's Z-tests assessed whether correlations were significantly different between low-field acquisition approaches.

Brain measure	Standard LF Axial-3T x Age			SynthSR-3T x Age			Steiger's Test: SynthSR-3T x Age vs. Standard LF Axial-3T x Age			Standard LF Multiple-3T x Age			Steigers Test: Standard LF Multiple-3T x Age vs. Standard LF Axial-3T x Age			SynthSR Multiple-3T x Age			Steiger's test: SynthSR multiple-3T x Age vs. Standard LF Axial-3T x Age		
	<i>r</i>	<i>p</i>	<i>q</i>	<i>r</i>	<i>p</i>	<i>q</i>	<i>Z</i>	<i>p</i>	<i>q</i>	<i>r</i>	<i>p</i>	<i>q</i>	<i>Z</i>	<i>p</i>	<i>q</i>	<i>r</i>	<i>p</i>	<i>q</i>	<i>Z</i>	<i>p</i>	<i>q</i>
Total Surface Area	-0.43	1.74e-04	0.002	-0.09	0.473	0.705	2.56	0.011	0.061	-0.29	0.015	0.080	1.55	0.121	0.290	-0.09	0.470	0.705	2.42	0.016	0.080
Mean Cortical Thickness	-0.09	0.465	0.705	-0.59	8.36e-08	2.73e-06	-3.17	0.002	0.014	-0.40	5.06e-04	0.006	-2.77	0.006	0.040	-0.38	0.001	0.013	-1.67	0.095	0.268
Estimated Intracranial Volume	-0.12	0.316	0.566	0.19	0.116	0.284	1.67	0.094	0.268	-0.05	0.678	0.898	1.26	0.209	0.428	0.28	0.017	0.082	2.00	0.045	0.171
Subcortical Gray Matter Volume	0.07	0.543	0.759	-4.2e-03	0.972	0.989	-0.60	0.550	0.759	-0.05	0.666	0.895	-1.38	0.167	0.365	-0.11	0.382	0.645	-1.26	0.207	0.428
Cortical Volume	-0.64	2.18e-09	2.14e-07	-0.58	1.44e-07	3.53e-06	1.00	0.318	0.566	-0.63	6.57e-09	3.22e-07	0.27	0.788	0.975	-0.53	2.34e-06	4.59e-05	1.67	0.095	0.268
Cerebral White Matter Volume	-0.31	0.010	0.061	-0.28	0.019	0.087	0.23	0.818	0.975	-0.39	8.45e-04	0.009	-1.41	0.158	0.352	-0.33	0.005	0.039	-0.21	0.831	0.975
Total Brain Volume	-0.03	0.835	0.975	-0.24	0.047	0.171	-1.47	0.141	0.321	-0.33	0.006	0.040	-3.81	1.36e-04	0.002	-0.21	0.085	0.268	-1.19	0.234	0.468

Supplemental Figures

SFigure 1. Flow chart of participant inclusion and exclusion

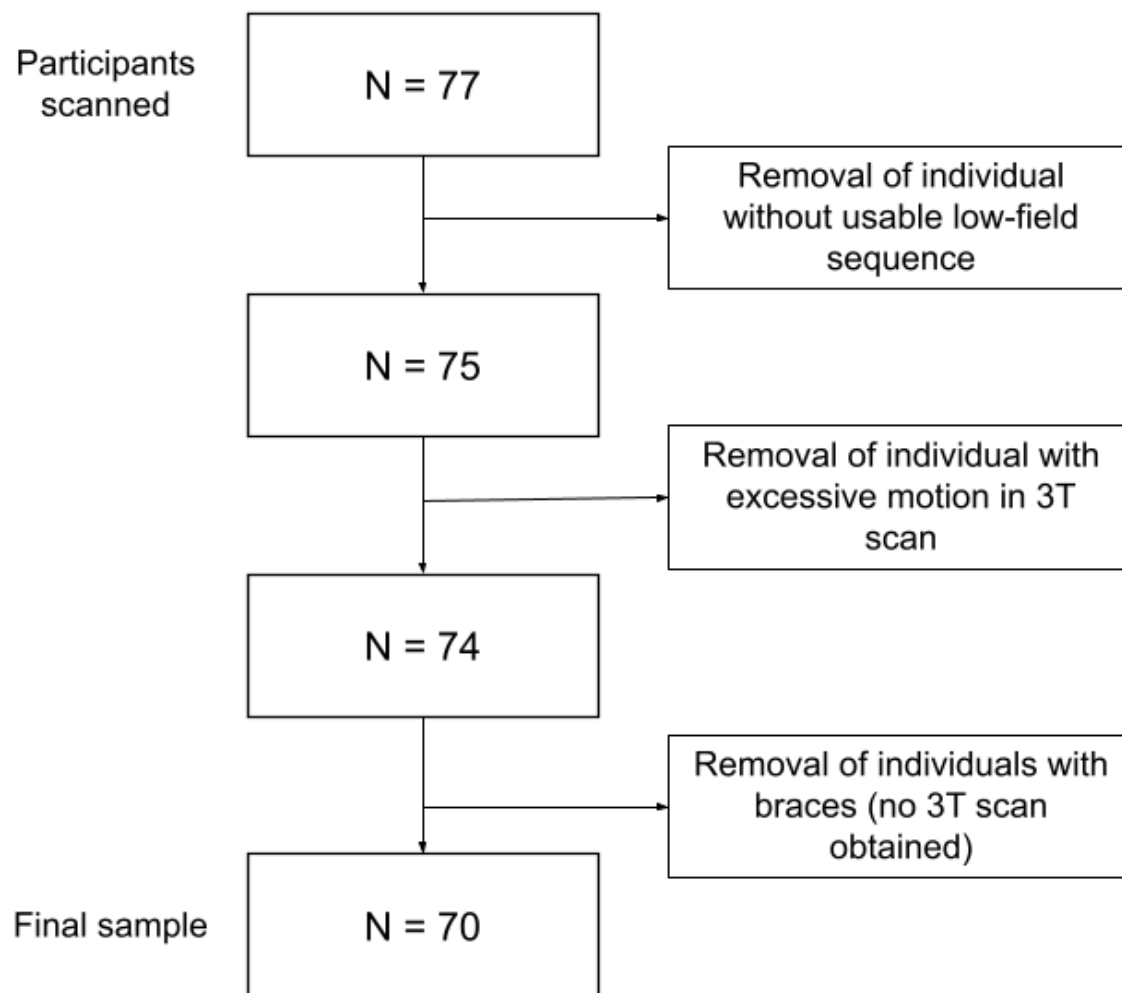


Figure 2. Bland-Altman plots of agreement between 3T and standard 64mT scans. Bland-Altman plots illustrate the agreement between 3T and standard 64mT scans. Bias indicated by blue dotted line, and 95% limits of agreement by the upper and lower red dotted lines. 95% confidence intervals indicated in shaded regions. Correlation between pairwise differences and means shown by line of best fit.

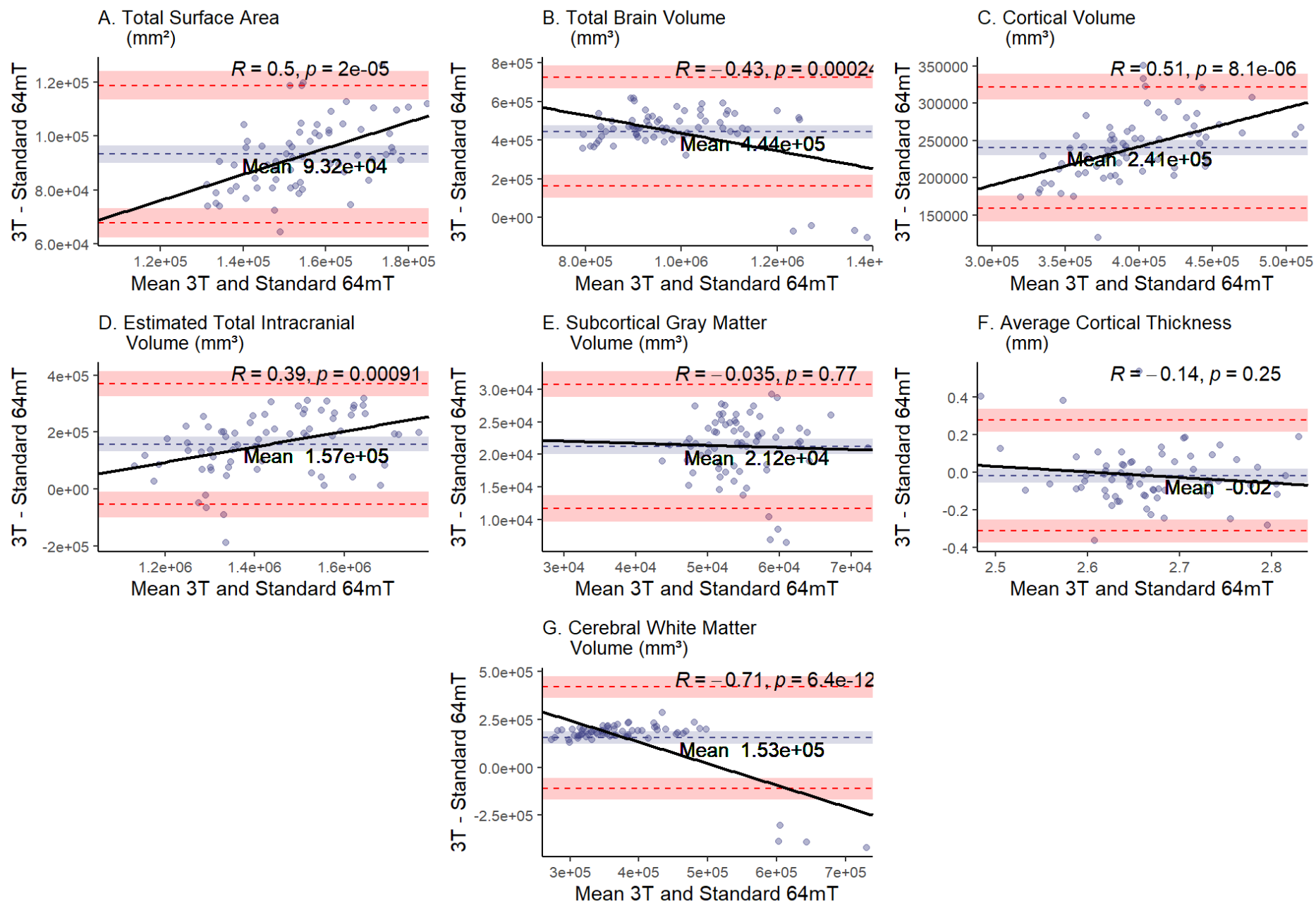
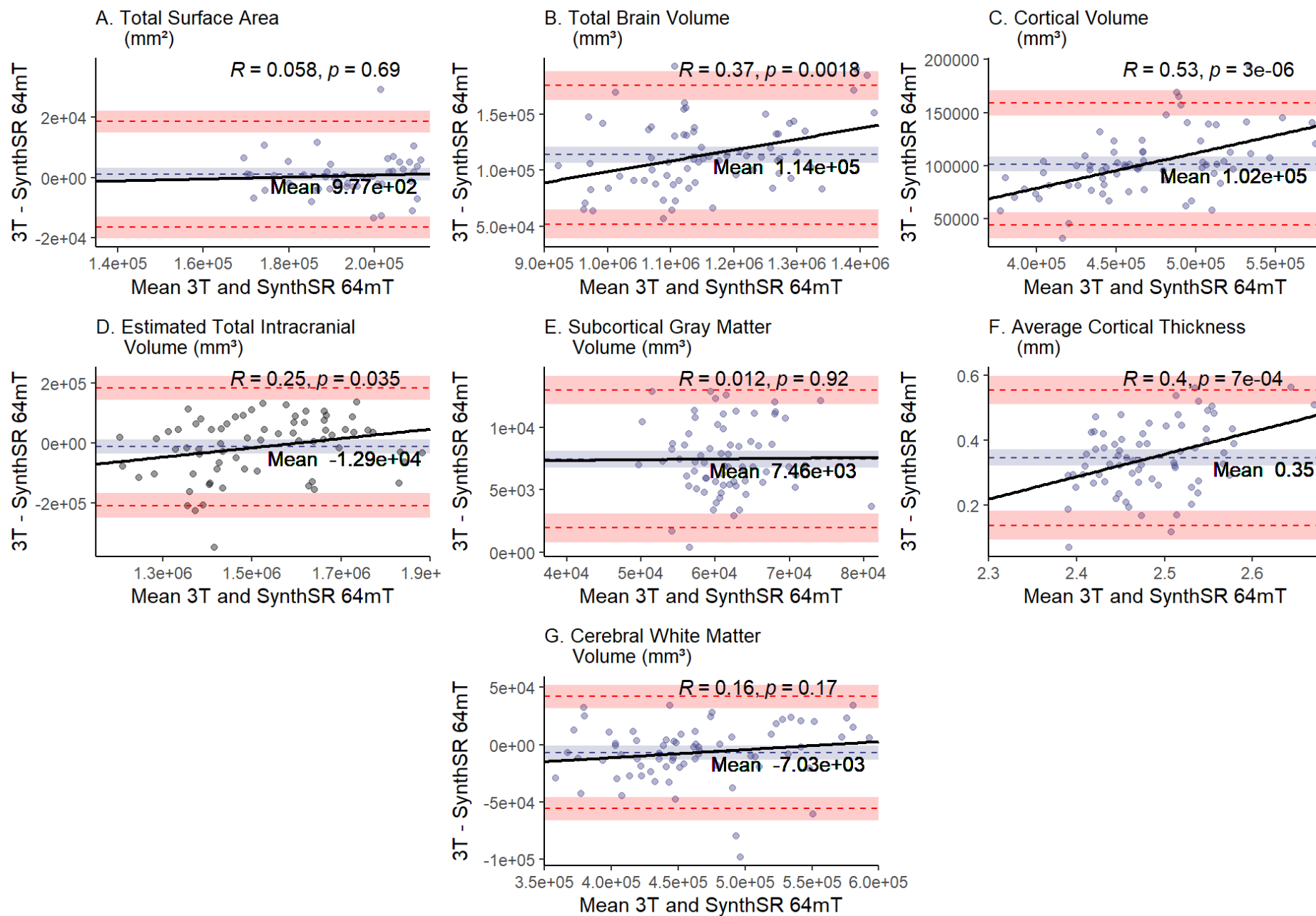


Figure 3. Bland-Altman plots illustrate the agreement between 3T and SynthSR-processed 64mT scans. Bias indicated by blue dotted line, and 95% limits of agreement by the upper and lower red dotted lines. 95% confidence intervals indicated in shaded regions. Correlation between pairwise differences and means shown by line of best fit.



SFigure 4. Comparison of individual-level global measurements across standard 64mT axial scans, standard 64mT multi-orientation scans, and traditional 3T scans

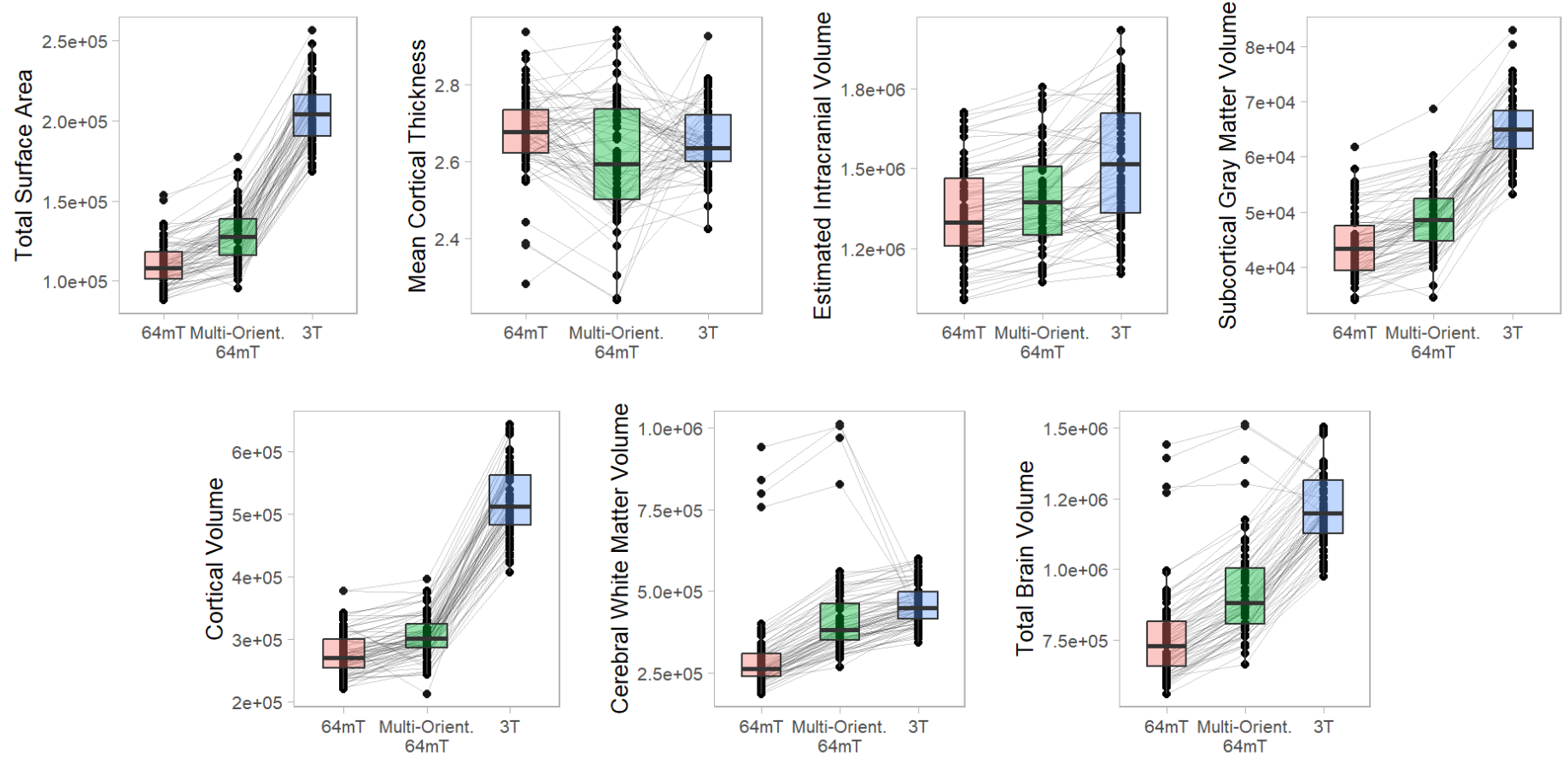
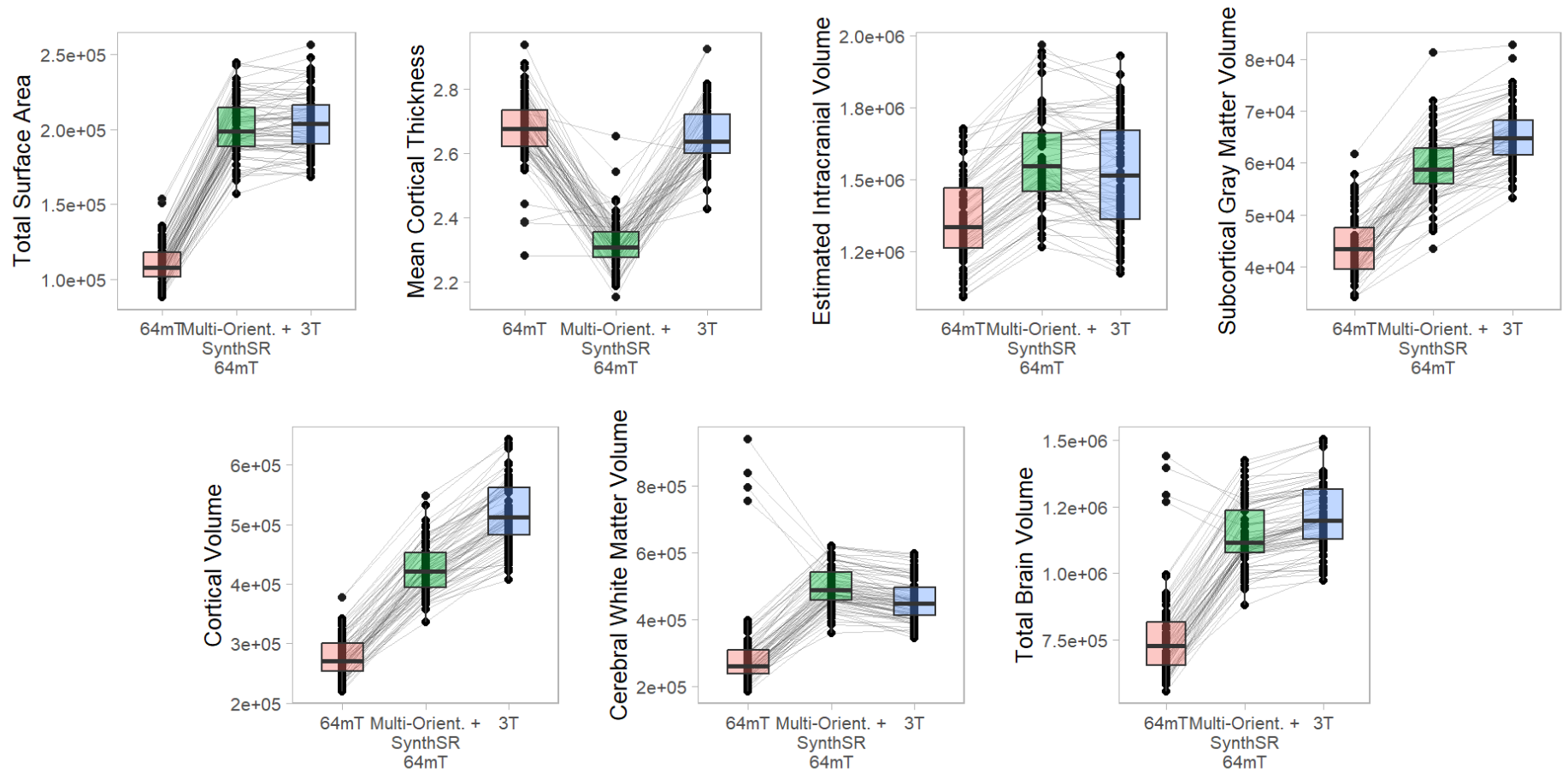


Figure 5. Comparison of individual-level global measurements across standard 64mT axial scans, SynthSR-processed 64mT multi-orientation scans, and traditional 3T scans



SFigure 6. Comparison of super-resolution approaches in improving correspondence between low-field and high-field-acquired MR images. A. Correlation of standard, single-orientation low-field images with high-field images for surface area, cortical volume, cortical thickness and subcortical volume. B. Correlation of SynthSR-processed, multi-orientation low-field images with high-field images. C. Steiger z-test values for change in correspondence between single-orientation, SynthSR-processed images and multi-orientation, SynthSR-processed images.

