

# Supplement

**Supplementary Table 1 Emergence periods for Growth advantage calculation**

<b>Dominant Variant</b>	<b>Incoming Variant</b>	<b>Start</b>	<b>End</b>
Delta	BA.1	Dec 15 2021	Dec 22 2021
BA.1	BA.2	March 6 2022	March 20 2022
BA.2	BA.4/5	June 18 2022	July 2 2022
BA.5	XBB	December 16 2022	December 30 2022

**Supplementary Table 2 Emergence periods for Ct value comparison**

<b>Dominant Variant</b>	<b>Incoming Variant</b>	<b>Start</b>	<b>Crossover</b>	<b>End</b>
BA.1	BA.2	February 27 2022	March 13 2022	March 27 2022
BA.2	BA.4/5	June 11 2022	June 25 2022	July 09 2022
BA.5	XBB	December 03 2022	December 17 2022	December 31 2022

**Supplementary Table 3 Emergence periods for vaccine breakthrough infections comparison**

<b>Dominant Variant</b>	<b>Incoming Variant</b>	<b>Start</b>	<b>End</b>
Delta	BA.1	November 30 2021	January 04 2022
BA.1	BA.2	February 23 2022	March 30 2022
BA.2	BA.4/5	June 09 2022	July 14 2022
BA.5	XBB	December 07 2022	January 11 2023

**Supplementary Table 4: Patient demographics by Vaccination Status (n = 14246)**

	<b>Unvaccinated (n=7234)</b>	<b>1 dose (n=972)</b>	<b>2+ doses ≥ 5 months (n=4688)</b>	<b>2+ doses &lt; 5 months (n=1352)</b>	<b>Overall (n=14246)</b>
<b>Age group</b>					
5-17	2051 (28.4%)	49 (5.0%)	222 (4.7%)	124 (9.2%)	2446 (17.2%)
18-39	2635 (36.4%)	327 (33.6%)	1197 (25.5%)	403 (29.8%)	4562 (32.0%)
40-64	1999 (27.6%)	453 (46.6%)	2045 (43.6%)	558 (41.3%)	5055 (35.5%)
65+	549 (7.6%)	143 (14.7%)	1224 (26.1%)	267 (19.7%)	2183 (15.3%)
<b>Sex</b>					
Female	3273 (45.2%)	464 (47.7%)	2346 (50.0%)	743 (55.0%)	6826 (47.9%)
Male	3157 (43.6%)	413 (42.5%)	1744 (37.2%)	538 (39.8%)	5852 (41.1%)
Other	21 (0.3%)	1 (0.1%)	12 (0.3%)	0 (0%)	34 (0.2%)
Unknown	783 (10.8%)	94 (9.7%)	586 (12.5%)	71 (5.3%)	1534 (10.8%)

**Supplementary Table 5: Delta Emergence Model**

<b>Covariates</b>	<b>Odds ratio (e<sup>β</sup>, 95% CI)</b>	<b>p-value</b>
<b>Vaccination status</b>		
Unvaccinated	Ref.	Ref.
One dose	NA	NA
2+ doses ≥ 5 months	0.302 (0.017, 5.481)	0.418
2+ doses < 5 months	2.533 (0.381, 16.818)	0.336
<b>Age category</b>		
18-39	Ref.	Ref.
5-17	0.573 (0.135, 2.444)	0.452
40-64	1.106 (0.296, 4.131)	0.881
65+	0.083 (0.008, 0.814)	0.033
<b>Sex</b>		
Male	Ref.	Ref.
Female	1.689 (0.562, 5.074)	0.350
<b>Time</b>	3.898 (2.023, 7.511)	<0.001

**Supplementary Table 6: BA.1 Emergence Model**

<b>Covariates</b>	<b>Odds ratio (e<sup>β</sup>, 95% CI)</b>	<b>p-value</b>
<b>Vaccination status</b>		
Unvaccinated	Ref.	Ref.
One dose	0.651 (0.262, 1.621)	0.357
2+ doses ≥ 5 months	1.917 (1.033, 3.558)	0.0393
2+ doses < 5 months	1.320 (0.507, 3.440)	0.570
<b>Age category</b>		
18-39	Ref.	Ref.
5-17	0.280 (0.131, 0.598)	0.001
40-64	0.471 (0.258, 0.861)	0.014
65+	0.365 (0.146, 0.912)	0.031
<b>Sex</b>		
Male	Ref.	Ref.
Female	0.956 (0.574, 1.592)	0.863
<b>Time</b>	50.430 (27.761, 91.611)	<0.001

**Supplementary Table 7: BA.2 Emergence Model**

<b>Covariates</b>	<b>Odds ratio (e<sup>β</sup>, 95% CI)</b>	<b>p-value</b>
<b>Vaccination status</b>		
Unvaccinated	Ref.	Ref.
One dose	1.558 (0.739, 3.285)	0.244
2+ doses ≥ 5 months	1.308 (0.830, 2.061)	0.247
2+ doses < 5 months	1.089 (0.677, 1.752)	0.724
<b>Age category</b>		
18-39	Ref.	Ref.
5-17	1.087 (0.614, 1.926)	0.775
40-64	1.003 (0.652, 1.542)	0.989
65+	1.251 (0.673, 2.327)	0.479
<b>Sex</b>		
Male	Ref.	Ref.
Female	1.066 (0.745, 1.526)	0.727
<b>Time</b>		<0.001

**Supplementary Table 8: BA.4/5 Emergence Model**

<b>Covariates</b>	<b>Odds ratio (e<sup>β</sup>, 95% CI)</b>	<b>p-value</b>
<b>Vaccination status</b>		
Unvaccinated	Ref.	Ref.
One dose	0.834 (0.380, 1.835)	0.653
2+ doses ≥ 5 months	1.214 (0.791, 1.863)	0.374
2+ doses < 5 months	2.441 (0.995, 5.988)	0.051
<b>Age category</b>		
18-39	Ref.	Ref.
5-17	0.782 (0.396, 1.546)	0.480
40-64	0.858 (0.551, 1.335)	0.497
65+	0.630 (0.373, 1.062)	0.083
<b>Time</b>	2.924 (2.363, 3.617)	<0.001

**Supplementary Table 9: XBB.1.5 Emergence Model**

<b>Covariates</b>	<b>Odds ratio (e<sup>β</sup>, 95% CI)</b>	<b>p-value</b>
<b>Vaccination status</b>		
Unvaccinated	Ref.	Ref.
One dose	0.677 (0.251, 1.830)	0.442
2+ doses ≥ 5 months	0.586 (0.339, 1.013)	0.056
2+ doses < 5 months	2.690 (0.405, 17.859)	0.306
<b>Age category</b>		
18-39	Ref.	Ref.
5-17	0.538 (0.218, 1.326)	0.178
40-64	0.575 (0.313, 1.056)	0.075
65+	0.539 (0.290, 0.999)	0.0497
<b>Sex</b>		
Male	Ref.	Ref.
Female	1.372 (0.865, 2.177)	0.179
<b>Time</b>	2.251 (1.765, 2.872)	<0.001

**Supplementary Table 10: Vaccination Strata by Emergence Period**

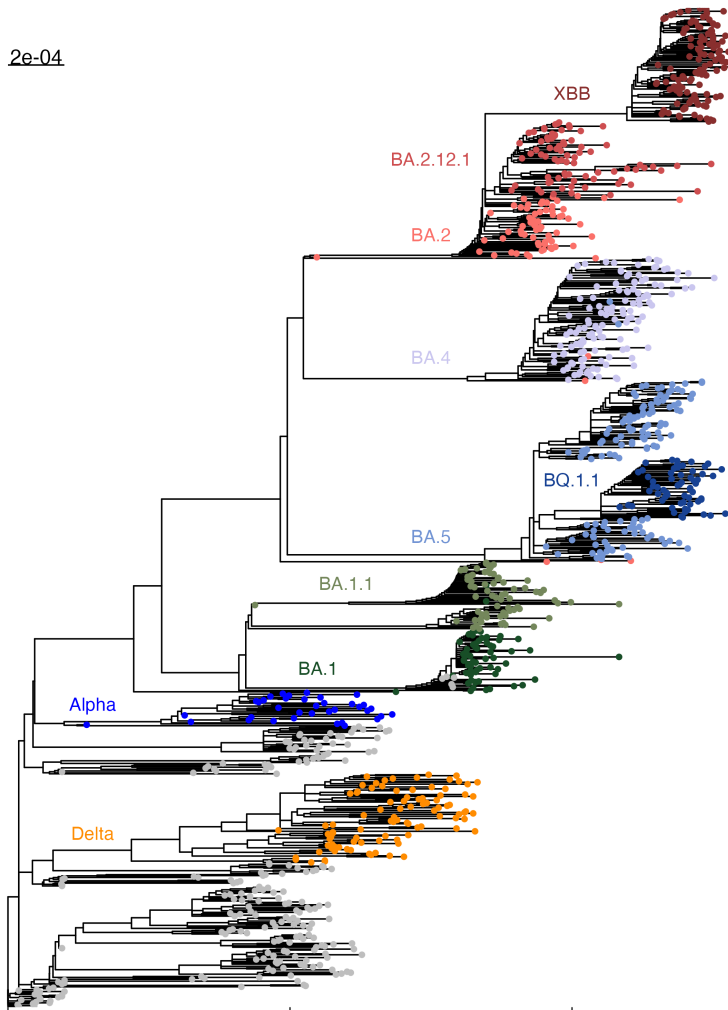
---

Emerging Variant	Delta	BA.1	BA.2	BA.4/5	XBB
<b>Vaccination Status</b>					
Unvaccinated	72	293	213	174	101
One dose	3	82	50	41	24
2+ doses $\geq$ 5 months	2	376	234	378	240
2+ doses < 5 months	9	78	181	36	6
Total	86	829	678	629	371

---

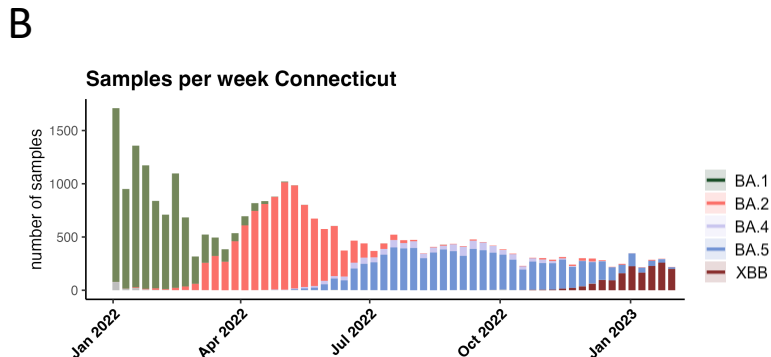
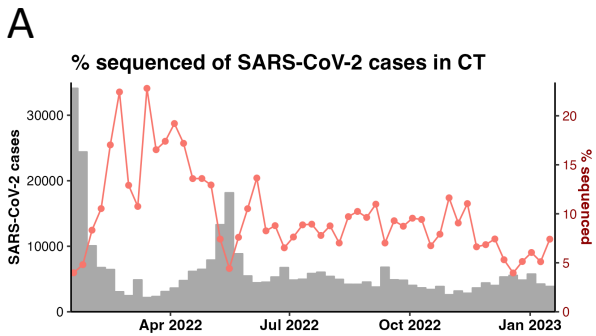


# Supplementary Figure 1



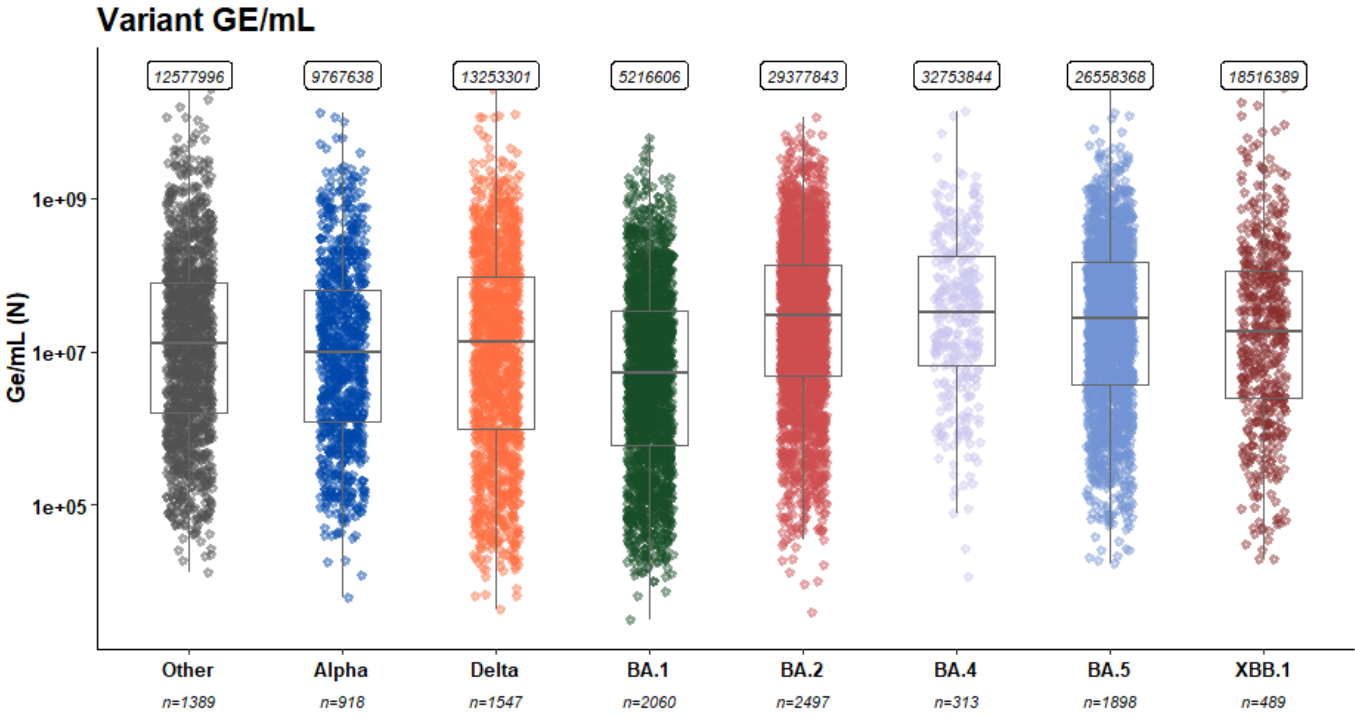
**Figure S1 Phylogenetic tree representing the genetic distance of different variants of concern as well as the Omicron lineages BA.1, BA.2, BA.4., BA.5 and XBB described in this study.** The tree is based on a sub-sampling of 1000 samples primarily subsampled from the Yale-SARS-CoV-2 genomic surveillance initiative including some international reference sequences. The tree is rooted in the Wuhan-Hu1 sample. Across the Omicron family, a remarkable degree of convergent intra-lineage evolution has led to the emergence of at least one major sub-lineage. This is most clearly exemplified in the independent acquisition of amino acid changes at the same positions in the Spike region (e.g. BA.1.1 (R346K), BA.4.6 (R346T) and BQ.1.1 (R346T)).

# Supplementary Figure 2



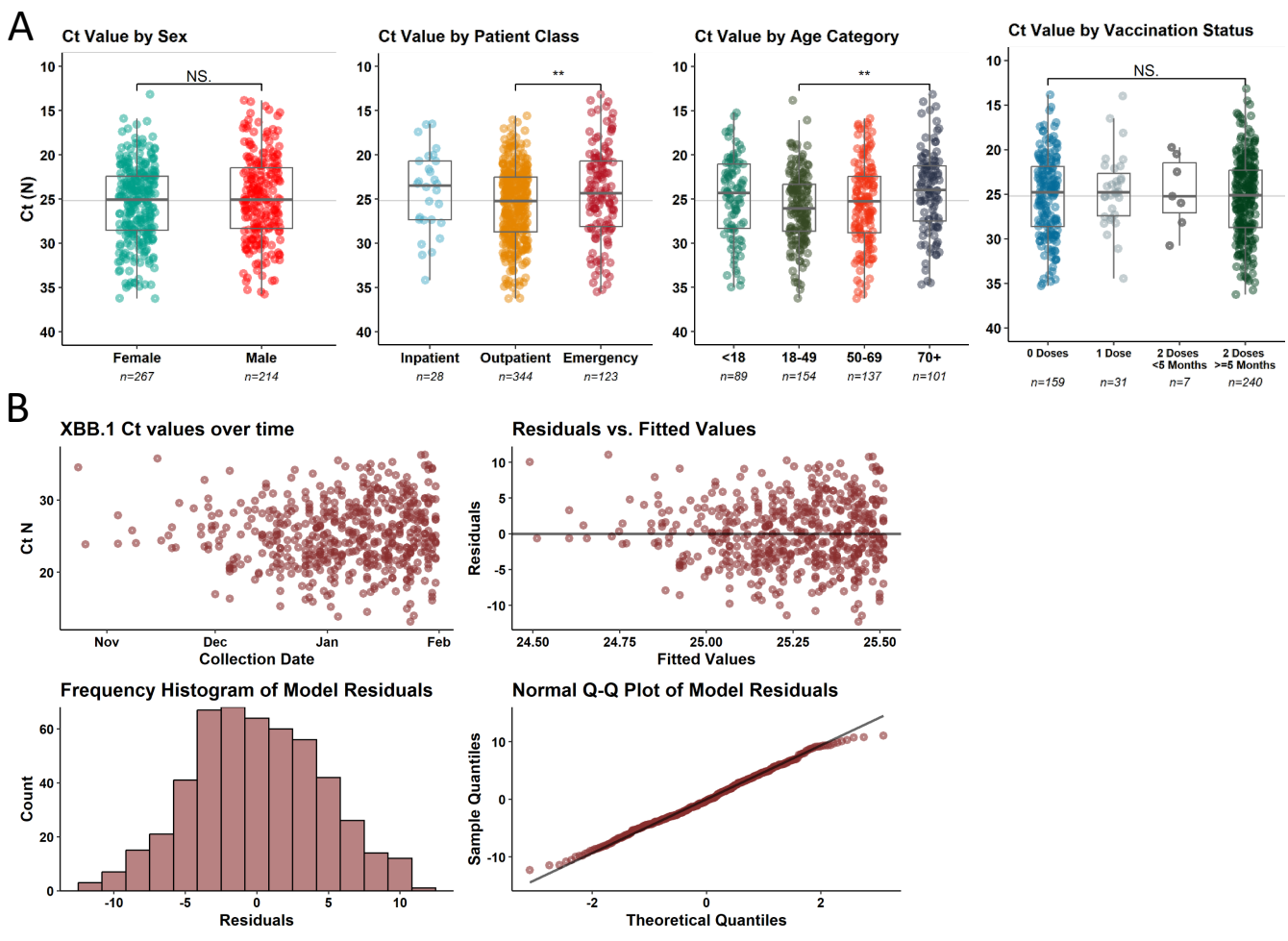
**Figure S2 Yale SARS-CoV-2 Genomic Surveillance Initiative in 2022 (A)** Frequency of % sequenced (red line) versus reported cases (grey bars) **(B)** Number and distribution of SARS-CoV-2 samples deposited on GISAID throughout 2022

# Supplementary Figure 3



**Figure S3 Genome equivalents retrieved from qPCR assay.** qPCR Ct values were fitted to a standard curve to retrieve genome equivalents per ml.

# Supplementary Figure 4



**Figure S4 Analysis of viral loads measured in early XBB samples (A) Samples stratified according to sex, patient class and vaccination status (B) Raw data and plotted trend from XBB samples**