

# **Hypertension mediated the effects of pericardial adipose tissue on cardiovascular diseases**

## **Authors:**

Feng Xie, MD<sup>1</sup>, Peng Cao, MD<sup>1</sup>, Hai-bo Tang, MD<sup>1</sup>, Zhi Luo, PhD<sup>2</sup>, Shai-hong Zhu, PhD<sup>1\*</sup>, Li-yong Zhu, PhD<sup>1\*</sup>

## **Author affiliations:**

1 Department of General Surgery, The Third Xiangya Hospital, Central South University, No.138, Tongzipo Road, Yuelu District, Hunan 410013 Changsha, China.

2 State Key Laboratory of High Performance Complex Manufacturing, College of Mechanical and Electrical Engineering, Central South University, 932 South Lushan Street, Hunan 410083 Changsha, China

## **\*Corresponding author:**

Shai-hong Zhu, E-mail: shaihongzhu@126.com, telephone and fax numbers: +8618975186193.

Li-yong Zhu, E-mail: zly8128@126.com, telephone and fax numbers: +8613975879453.

**word count:** 5093

## ABSTRACT

**Background:** Although previous studies have presented a relevance between pericardial adipose tissue (PAT) and cardiovascular diseases (CVDs), the precise role of PAT in CVDs remains uncertain.

**Methods:** In the Mendelian randomization (MR) research, we extracted instrumental variants significantly correlated with PAT to assess its effects on CVDs. Inverse-variance weighted model was elected as the leading MR analytical method. F-statistic was utilized to assess the intensity of instrumental variants and avert weak-tool bias. Numerous sensitivity analyses were adopted to confirm the credibility of outcomes. The mediated effect of hypertension between PAT and CVDs was estimated in 2-step MR analysis.

**Results:** The MR research demonstrated genetically determined PAT was remarkably correlated with greater risks of cardiovascular disease (OR 1.15; 95% CI 1.09--1.22,  $P=1.32 \times 10^{-6}$ ), heart failure (OR 2.62; 95% CI 1.28--5.34,  $P=0.008$ ), coronary heart disease (OR 3.53; 95% CI 1.55--8.06,  $P=0.003$ ), ischemic heart disease (OR 2.31; 95% CI 1.14--4.67,  $P=0.020$ ), ischemic stroke (OR 3.18; 95% CI 1.63--6.20,  $P=0.001$ ), and venous thromboembolism (OR 1.02; 95% CI 1.00--1.04,  $P=0.015$ ). And the correlation was partially mediated by hypertension. Results were verified by sensitivity analysis.

**Conclusions:** Genetic determined PAT was remarkably correlated with additional risks of diverse CVDs. Identified as a mediator, hypertension had a significant influence on the causal association. The correlation between PAT and CVDs deserves further exploration.

## Keywords

pericardial adipose tissue, cardiovascular diseases, Mendelian randomization

## **NOVELTY AND RELEVANCE**

### **What Is New?**

This was the first Mendelian randomization research to detect the potential causal relationship of genetically determined PTA on multiple CVDs risks and confirm the mediating effect of hypertension on the causal association.

### **What Is Relevant?**

The MR research not only estimated the causal effect of PAT on hypertension but also identified the mediating role of hypertension between PAT and CVDs.

### **Clinical/Pathophysiological Implications?**

This study revealed PAT promoted CVDs progression and hypertension played an intermediary role, which indicated that PAT might serve as a potential therapeutic target and antihypertensive drugs could be conjunctly used to provide cardiovascular benefits.

especially for people with obesity, because they had more PAT accumulation.

## **Nonstandard Abbreviations and Acronyms**

AA: aortic aneurysm; AF: atrial fibrillation; CA: cardiac arrhythmias; CAD: coronary artery disease; CES: cardioembolic stroke; CHD: coronary heart disease; CI: confidence interval; CVD: cardiovascular disease; CVDs: cardiovascular diseases; GWAS: genome-wide association study; HCM: hypertrophic cardiomyopathy; HF: heart failure; IHD: ischemic heart disease; IS: ischemic stroke; IVs: instrumental variables; IVW: inverse-variance weighting; LAS: large artery stroke; LD: linkage disequilibrium; MI: myocardial infarction; MR: mendelian randomization; OR: odds ratio; PAT: pericardial adipose tissue; SAH: subarachnoid hemorrhage; SNPs: single-nucleotide polymorphism; SVS: small vessel stroke; VTE: venous thromboembolism.

## **INTRODUCTION**

As a leading cause of death, cardiovascular diseases (CVDs) were accountable for almost 19 million fatalities in 2020.<sup>1,2</sup> CVDs consist of diverse diseases, such as cerebrovascular disease, coronary artery disease (CAD), and ischemic stroke (IS).<sup>1</sup> And IS can be primarily categorized into three subtypes, involving cardioembolic stroke (CES), large artery stroke (LAS), and small vessel stroke (SVS).<sup>3</sup> Lots of etiologic factors are responsible for the development of CVDs.<sup>4</sup> Diabetes mellitus,

hypertension, and hyperlipidemia all contribute to CVDs risk.<sup>5-7</sup> Furthermore, pericardial adipose tissue is also reported as a suspected risk factor for CVDs.<sup>8</sup>

Pericardial adipose tissue (PAT), as a special constituent of body fat, is a unique fat storage surrounding the outermost layer of pericardium.<sup>9</sup> PAT is divided into paracardial fat, epicardial fat, and perivascular fat from outside to inside.<sup>10</sup> Owing to its proximity to heart, PAT has been intuitively assumed to have a vital influence in the pathobiology of CVDs.<sup>11</sup> The lack of an anatomical barrier allows crosstalk between PAT and the contiguous myocardium. Although one of PAT's roles is mechanical protection and energetic support,<sup>12,13</sup> over-expanding PAT turns into a deleterious pro-inflammatory character from a beneficial anti-inflammatory role through paracrine and vasocrine.<sup>9,14</sup> Amounts of observational studies already demonstrated that PAT is positively correlated with higher risks of hypertension,<sup>15</sup> heart failure (HF),<sup>16</sup> atrial fibrillation (AF),<sup>17</sup> CAD,<sup>18</sup> and stroke.<sup>19</sup> However, some research revealed that there was inconsistent relationship between PAT and obstructive CAD, and coronary artery calcification extent had no obvious association with increased PAT volume even after adjusting for age and sex.<sup>20,21</sup>

Of note, most of the previous studies are cross-sectional research, which has a weak strength to explain the causal relationship, so recent research challenged the relationship and emphasized longitudinal studies.<sup>20,22</sup> Besides, traditional observational research is vulnerable to confounders and reverse causation bias. Therefore, causality in the associations of PAT with CVDs is worth further exploration.

Mendelian randomization (MR) is a nascent methodology for epidemiological studies. MR study adopts instrumental variables (IVs) derived from heritable variants that are dependably correlated with potential risk factors to assess the causal correlation between exposure for phenotype and outcome for disease based on a genome-wide association study (GWAS).<sup>23</sup> Because of the peculiar strength of IVs, MR research is less vulnerable to reverse causation and confounders compared with conventional observational studies.<sup>24</sup> Fortunately, a recent GWAS identified multiple heritable variants related to pericardial fat.<sup>25</sup> By utilizing those single-nucleotide polymorphisms (SNPs) as IVs, we here performed MR research to evaluate the genetical effect of PAT on CVDs, including cardiovascular disease (CVD), HF, cardiac arrhythmias (CA), AF, aortic aneurysm (AA), coronary heart disease (CHD), hypertrophic cardiomyopathy (HCM), ischemic heart disease (IHD), myocardial infarction (MI), IS, CES, SVS, LAS, subarachnoid hemorrhage (SAH) and venous thromboembolism (VTE), and to further inquire the mediating role of hypertension on

the causal association.

## METHODS

### Study Design

A summarization of the MR design was presented (Figure 1). The MR research was adopted to assess the causal correlation between PAT and CVDs risks by utilizing heritable variants as IVs. And IVs fulfill the following three principal assumptions: (1) directly related to exposure; (2) separate from confounders; and (3) act on the risk of outcomes only through exposure.<sup>26</sup>

The statistical data for exposure of PAT accumulation were derived from a largest and latest GWAS. PAT was measured by cardiac magnetic resonance images in 28,161 participants with white British heritage.<sup>25</sup> GWAS datasets for outcomes of all CVDs were retrieved from IEU OpenGWAS project. Statistical data from the MEGASTROKE was acquired for CES, SVS, LAS, and IS.<sup>27</sup> GWAS datasets for CVD, AF, HTN,<sup>28</sup> MI, SAH,<sup>29</sup> and VTE<sup>30</sup> were derived from UK Biobank. And we acquired most of the GWAS data from FinnGen, including CHD, IHD, HCM, AA, CA, and HF.<sup>31</sup> The details of data sources are described (Table S1). Ethical approval and informed consent of all contributors have been obtained.

### IVs Selection

IVs significantly correlated with PAT were extracted in SNPs from GWAS when the p-value was less than  $5 \times 10^{-8}$ . To identify the corresponding linkage disequilibrium (LD) of IVs, we further clumped marked SNPs with 10,000 kb and  $r^2 < 0.001$  from the 1000 Genomes linkage disequilibrium European samples.<sup>32</sup> Then we searched each single SNP in PhenoScanner V2 to avoid obvious pleiotropic effects, excluded SNPs corresponding to potential confounding factors and selected the remained SNPs for further analysis.<sup>33</sup> To estimate the intensity of IVs and control the weak-tool bias, we utilized  $R^2$  and F-statistic. The calculation method follows:  $F = (N-2) \times R^2 / (1-R^2)$ . The  $R^2$  suggests the percentage of exposure variance construed by IVs, which is computed by the following equation:  $R^2 = [2 \times \beta^2 \times EAF \times (1-EAF)] / [2 \times \beta^2 \times EAF \times (1-EAF) + 2 \times N \times SE^2 \times EAF \times (1-EAF)]$ .<sup>34</sup> Here,  $\beta$ , EAF, N, and SE separately refer to the assessed effect, effect allele frequency, sample size, and standard error. Usually, little probability of weak-tool bias is considered if  $F > 10$ .<sup>34</sup>

### MR Analysis

Inverse-variance weighting (IVW) model was elected as the leading MR analytical method. Although vulnerable to pleiotropy and bias, IVW method can provide the most precise estimated effects.<sup>35</sup> Thus, in order to infer the association between PAT

and CVD, several sensitivity analyses were employed, including MR-RAPS,<sup>36</sup> MR-Egger,<sup>37</sup> weighted median,<sup>38</sup> and MR-PRESSO.<sup>39</sup> Weighted median analysis gives a permission to estimate causality consistently even though up to 50% of IVs are of invalidity.<sup>38</sup> MR-Egger was implemented to measure and rectify the possible horizontal multiplicity.<sup>40</sup> The p-value of intercept greater than 0.05 indicates few remarkable bias of horizontal multiplicity is noted. MR-PRESSO can identify outlying SNPs automatically and exclude outliers to correct MR estimates.<sup>39</sup> In addition, Q statistics was employed to detect heterogeneity between individual SNP in IVW analysis, which could guide to an appropriate method.<sup>38</sup> When the p-value for Q statistic is smaller than 0.05, which indicates the possibility of heterogeneity, IVW method of random effect is considered; otherwise, IVW method of fixed effect will be selected to evaluate the causal effect. Furthermore, we used leave-one-out test to detect outliers and applied funnel and forest plots to examine the pleiotropy intuitively. Finally, a 2-step MR was carried out to estimate the mediated effect of hypertension between PAT and CVDs.<sup>41</sup> Coefficients analysis was utilized to evaluate indirect effect ( $\beta_1 \times \beta_2$ ).  $\beta_1$  and  $\beta_2$  represented the estimated causal effects of PAT on HTN, and HTN on CVDs respectively. Then, Delta method was applied to derive standard error and calculate the proportion of mediated effect in total effect.<sup>42</sup>

To display the estimated causal effect of PAT on CVDs, odds ratio (OR) as well as 95% confidence interval (CI) was employed. All p-values were doubled tailed and corrected by FDR method. Statistical analysis was mainly executed in R project (4.3.1 version) by applying MR-PRESSO and TwoSampleMR packages.

## RESULTS

### Traits of Selected SNPs

After screening P ( $P < 5 \times 10^{-8}$ ), eliminating LD ( $r^2 < 0.001$ , 10,000 kb), retrieving in PhenoScanner, and excluding palindromic SNPs, 11 significantly independent SNPs of PAT were extracted as IVs, which summarized 1.32% of the variability ( $R^2$ ). F-statistics greater than 10 indicated the strength of the IVs and reflected no weak-instrument bias acquiescently. More details were provided (Table S2 and S3).

### Genetic Effect of PAT on CVDs

The MR results especially for IVW model indicated biologically determined PAT was remarkably correlated with greater risks of CVD (OR 1.15; 95% CI 1.09--1.22,  $P=1.98 \times 10^{-5}$ ), HF (OR 2.62; 95% CI 1.28--5.34,  $P=0.024$ ), HTN (OR 1.11; 95% CI 1.05--1.17,  $P=8.53 \times 10^{-5}$ ), CHD (OR 3.53; 95% CI 1.55--8.06,  $P=0.014$ ), IHD (OR 2.31; 95% CI 1.14--4.67,  $P=0.043$ ), IS (OR 3.18; 95% CI 1.63--6.20,  $P=0.005$ ), and

VTE (OR 1.02; 95% CI 1.00--1.04, P=0.038). However, compared with the controls, no obvious relevance was discovered between genetically determined PAT and other CVDs, including CA (OR 1.44; 95% CI 0.72--2.82, P=0.374), AF (OR 0.99; 95% CI 0.98--1.01, P=0.320), AA (OR 1.15; 95% CI 0.19--6.91, P=0.878), HCM (OR 0.27; 95% CI 5.78\*10<sup>-3</sup>--12.61, P=0.577), MI (OR 1.39; 95% CI 0.76--2.55, P=0.374), CES (OR 1.50; 95% CI 0.41--5.39, P=0.577), SVS (OR 3.37; 95% CI 0.97--11.78, P=0.106), LAS (OR 4.05; 95% CI 0.77--21.39, P=0.165), and SAH (OR 0.17; 95% CI 2.67\*10<sup>-2</sup>--1.07, P=0.060). Results are presented (Figure 2).

### Sensitivity Analysis

The p-value for Q statistics greater than 0.05 instructed no heterogeneity between individual SNP and guided to the fixed-effect IVW model to estimate causal effects chiefly. MR-RAPS and weighted median analyses conducted to detect the causal effect of increased PAT on CVDs were fairly consistent with the IVW model. No significant horizontal multiplicity was discovered based on the intercept of MR-Egger analysis. Besides, no outlying SNPs were identified and excluded using MR-PRESSO analysis. Further, leave-one-out test, along with forest and funnel plots gave an intuitive presence of potential heterogeneity. All results of sensitivity analysis are available (Table S7 and S8).

### 2-step Mediation MR

To figure out what role HTN played between PAT and CVDs, we adopted 2-step MR analysis to assess the intermediary effect. After a bundle of sensitivity analyses, the salient results supported that associations of PAT with CVD, HF, CHD, IHD, and IS were mediated by HTN to some extent. The mediated proportions of HTN were for HF (13.23%; 95% CI 11.47%--15.00%), CHD (13.51%; 95% CI 11.48%--15.55%), IHD (19.18%; 95% CI 17.13%--21.24%), IS (14.51%; 95% CI 12.67%--16.35%). Results are shown (Figure 3 and 4).

## DISCUSSION

In the MR study, IVs containing 11 SNPs were designated to assess the causal effect. The result suggested that biologically determined PAT was significantly correlated with greater risks of CVD, HF, HTN, CHD, IHD, IS, and VTE after standard MR and sensitivity analyses. Hypertension was proved to play a strong mediating role in the linkage. But limited evidence supported a potential causal association between PAT and CA, AF, AA, HCM, MI, CES, SVS, LAS, SAH risks.

Classical anthropometric metrics including body mass index have limitations in evaluating the correlation between PAT and CVDs.<sup>43,44</sup> Nowadays, amounts of studies



have addressed the association. Satish et al. revealed that elevated PAT volume came with a greater risk of HF with preserved ejection fraction after adjusting for abdominal visceral adipose tissue.<sup>16</sup> Pugliese et al. demonstrated patients suffering from HF of reduced ejection fraction were observed with significantly decreased PAT thickness compared to controls.<sup>45</sup> But the lack of GWAS data prevented us estimating the effect of PAT on HF with different subtypes. A meta-analysis declared patients with AF were significantly associated with increased PAT volume.<sup>46</sup> Iacobellis G et al. highlighted PAT thickness quantified by echocardiography was related to the seriousness of CAD.<sup>47</sup> According to Bryan et al., the hazard of MI conferred with increased PAT thickness measured by computed tomography.<sup>48</sup> However, some reports presented contradictory results. Park J et al. demonstrated no remarkable relationship was observed between PAT and AF.<sup>49</sup> An observational study presented PAT was uncorrelated with CAD.<sup>50</sup> Also, research confirmed that an upper component in PAT promoted the recovery of cardiac function after MI.<sup>51</sup> Although traditional transect studies are vulnerable to inverse causation bias and confounders, these inconsistent observational outcomes still confuse us. Looking forward to more high-quality studies to give an affirmative answer. The association between PAT and CVDs worth exploring further.

In general, the MR research revealed that PAT was an expected predictor for increased risk of CVDs. PAT, as a specific type of visceral fat, is related to metabolic syndrome and hazard of CVDs.<sup>52</sup> And amounts of inflammatory and bioactive factors, including adipocytokines, Interleukin-6, and tumor necrosis factor- $\alpha$  could be secreted by PAT through paracrine and vasocrine functions, which promoted cardiovascular disease progression.<sup>53,54</sup> Unexpectedly, a strong connection was discovered between PAT and HTN. Known as a major hazard for CVDs,<sup>7</sup> it was reasonable to conjecture that HTN played an important intermediary role between PAT and CVDs. The mediating effect was confirmed by 2-step mediation MR analysis, which might point the way to understanding how PAT facilitated CVDs occurrence. Recent studies have declared glucagon-like peptide-1 analogue and sodium-dependent glucose transporters 2 inhibitors could diminish PAT accumulation.<sup>55,56</sup> These above paint such a picture of prospect that PAT might act as a potential drug target to provide cardiovascular benefits and antihypertensive drugs could be conjunctly used in CVDs progression. Nowadays, obesity and cardiovascular diseases are heavy burdens on global health. Specific and effective drugs targeting PAT would offer significant health consequences, especially for people with obesity who were more susceptible to developing CVDs because of greater PAT accumulation.



But as far as the causal effect of PAT on AF, our results are discrepant with most previous research. Several possible explanations can be made for this inconsistency. Firstly, whether PAT is an independent impact factor for atrial fibrillation is still critical.<sup>46,49</sup> Secondly, the occurrence of AF is genetically and environmentally driven, but we assessed the association between PAT and AF only genetically. Besides, MR research usually considers long-term impacts. Thirdly, confounding factors are unignorable in previous observational studies, such as hyperlipidemia, and drug utilization. And the poor reproducibility of PAT thickness measured by echocardiography may account for part of these differing discoveries.<sup>57</sup> In addition, cross-sectional and observational studies have their limitations and shortcomings. Here, we expect for more prospectively longitudinal and experimental research with greater persuasive power. Finally, no matter whether as a contributor or follower or a double-edged sword of both protection and destruction, the role played by PAT in CVDs remains to be further confirmed in humans.

Our research has several advantages. First of all, it is the first MR research to detect the prospective causal association between genetically determined PAT and multiple CVDs. Next, the latest and large-scale GWAS datasets used in the MR study provide a more persuasive way to assess causal relationship. Furthermore, diverse sensitivity analyses, MR methods, and IVs strength evaluation were conducted to validate the credibility of outcomes and avoid weak-tool bias as well as traditional confounding factors.

Of note, there are some limitations in the MR research. Firstly, due to the lack of original GWAS data of PAT, we could not further carry out multi-variable MR to evaluate the causal effects deeply and control potential confounders, such as BMI, visceral adipose tissue, triglyceride, and hypertension. Secondly, participants in the MR study are all European, which means these findings do not necessarily apply to another population. Thirdly, some degree of sample overlap appeared between PAT and CVDs, the maximum possible percentages of which were for CVD (5.81%), AF (6.08%), HTN (5.81%), MI (6.10%), SAH (5.95%), and VTE (7.80). But Pierce has revealed that 10% of IVs still retain 90% of analytical power.<sup>58</sup> And the corresponding F-statistics were large enough to compensate for its effect to some extent. Fourthly, in view of insufficient statistical efficacy, susceptibility to outlying SNPs, and larger standard deviation than other methods, the MR-Egger sometimes presented inconsistent results. Otherwise, although a series of sensitivity analyses were adopted, potential multiplicity and bias might still remain. Finally, the cases of AA (2825), HCM (556), LAS (4373), SAH (1693), and VTE (4620) were fairly small

when compared with other outcomes.

## **CONCLUSION**

MR research indicated biologically determined PAT was significantly correlated with greater risks of CVD, HF, HTN, CHD, IHD, IS, and VTE. The study demonstrates the potential that PAT serves as a drug target for several cardiovascular diseases. But the correlation between PAT and multiple CVDs deserves further exploration.

## **PERSPECTIVES**

Our study discovered the causal effect of PAT on CVDs and HTN played a vital intermediary role in it. PAT demonstrates significant potential as a therapeutic target for CVDs, and antihypertensive strategies might be taken into account. Usually, people with obesity get additional PAT cumulation and are more prone to CVDs. In terms of obesity and CVDs being heavy burdens on global health, drugs specifically targeting PAT will offer huge health benefits. However, the pathophysiologic mechanism between PAT and CDVs remains unclear, more scientifically-designed studies are required to clarify the relationship.

## **Acknowledgments**

Feng Xie and Shai-hong Zhu made a contribution to the conception. Feng Xie and Peng Cao drafted this paper. Hai-bo Tang, Zhi Luo and Li-yong Zhu gave a critical revision. Li-yong Zhu obtained funding. Sincere thanks to all contributors of utilized GWASs.

## **Sources of Funding**

This research was sponsored by the General Program of National Natural Science Foundation of China (grant NO.82370676) and Key Research and Development Program of Hunan province (grant NO. 2022SK2001).

## **Disclosure**

None.

## **Supplemental Material**

Table S1--S8

Figure S1--S12

## REFERENCES

1. Tsao CW, Aday AW, Almarzooq ZI, Alonso A, Beaton AZ, Bittencourt MS, Boehme AK, Buxton AE, Carson AP, Commodore-Mensah Y, et al. Heart Disease and Stroke Statistics-2022 Update: A Report From the American Heart Association. *Circulation*. 2022;145:e153-e639. doi: 10.1161/cir.0000000000001052
2. Roth GA, Mensah GA, Johnson CO, Addolorato G, Ammirati E, Baddour LM, Barengo NC, Beaton AZ, Benjamin EJ, Benziger CP, et al. Global Burden of Cardiovascular Diseases and Risk Factors, 1990-2019: Update From the GBD 2019 Study. *J Am Coll Cardiol*. 2020;76:2982-3021. doi: 10.1016/j.jacc.2020.11.010
3. Schneider AT, Kissela B, Woo D, Kleindorfer D, Alwell K, Miller R, Szaflarski J, Gebel J, Khoury J, Shukla R, et al. Ischemic stroke subtypes: a population-based study of incidence rates among blacks and whites. *Stroke*. 2004;35:1552-1556. doi: 10.1161/01.STR.0000129335.28301.f5
4. Flora GD, Nayak MK. A Brief Review of Cardiovascular Diseases, Associated Risk Factors and Current Treatment Regimes. *Curr Pharm Des*. 2019;25:4063-4084. doi: 10.2174/1381612825666190925163827
5. Eckel RH, Bornfeldt KE, Goldberg IJ. Cardiovascular disease in diabetes, beyond glucose. *Cell Metab*. 2021;33:1519-1545. doi: 10.1016/j.cmet.2021.07.001
6. Ference BA, Ginsberg HN, Graham I, Ray KK, Packard CJ, Bruckert E, Hegele RA, Krauss RM, Raal FJ, Schunkert H, et al. Low-density lipoproteins cause atherosclerotic cardiovascular disease. 1. Evidence from genetic, epidemiologic, and

- clinical studies. A consensus statement from the European Atherosclerosis Society Consensus Panel. *Eur Heart J*. 2017;38:2459-2472. doi: 10.1093/eurheartj/ehx144
7. Wu K, Zheng H, Wu W, Chen G, Cai Z, Cai Z, Lan Y, Wu D, Wu S, Chen Y. Temporal relationship between triglyceride-glucose index and blood pressure and their joint cumulative effect on cardiovascular disease risk: a longitudinal cohort study. *Cardiovasc Diabetol*. 2023;22:332. doi: 10.1186/s12933-023-02058-1
  8. Li M, Qi L, Li Y, Zhang S, Lin L, Zhou L, Han W, Qu X, Cai J, Ye M, et al. Association of Pericardiac Adipose Tissue With Coronary Artery Disease. *Front Endocrinol (Lausanne)*. 2021;12:724859. doi: 10.3389/fendo.2021.724859
  9. Iacobellis G. Epicardial and pericardial fat: close, but very different. *Obesity (Silver Spring)*. 2009;17:625; author reply 626-627. doi: 10.1038/oby.2008.575
  10. Iacobellis G. Local and systemic effects of the multifaceted epicardial adipose tissue depot. *Nat Rev Endocrinol*. 11:363-371. doi: 10.1038/nrendo.2015.58
  11. Kim TH, Yu SH, Choi SH, Yoon JW, Kang SM, Chun EJ, Choi SI, Shin H, Lee HK, Park KS, et al. Pericardial fat amount is an independent risk factor of coronary artery stenosis assessed by multidetector-row computed tomography: the Korean Atherosclerosis Study 2. *Obesity (Silver Spring)*. 2011;19:1028-1034. doi: 10.1038/oby.2010.246
  12. Iacobellis G, Corradi D, Sharma AM. Epicardial adipose tissue: anatomic, biomolecular and clinical relationships with the heart. *Nat Clin Pract Cardiovasc Med*. 2005;2:536-543. doi: 10.1038/ncpcardio0319
  13. Cheung L, Gertow J, Werngren O, Folkersen L, Petrovic N, Nedergaard J,

- Franco-Cereceda A, Eriksson P, Fisher RM. Human mediastinal adipose tissue displays certain characteristics of brown fat. *Nutr Diabetes*. 2013;3:e66. doi: 10.1038/nutd.2013.6
14. Yamada H, Sata M. Role of pericardial fat: The good, the bad and the ugly. *J Cardiol*. 2015;65:2-4. doi: 10.1016/j.jjcc.2014.07.004
15. Liu J, Fox CS, Hickson D, Sarpong D, Ekunwe L, May WD, Hundley GW, Carr JJ, Taylor HA. Pericardial adipose tissue, atherosclerosis, and cardiovascular disease risk factors: the Jackson heart study. *Diabetes Care*. 2010;33:1635-1639. doi: 10.2337/dc10-0245
16. Kenchaiah S, Ding J, Carr JJ, Allison MA, Budoff MJ, Tracy RP, Burke GL, McClelland RL, Arai AE, Bluemke DA. Pericardial Fat and the Risk of Heart Failure. *J Am Coll Cardiol*. 2021;77:2638-2652. doi: 10.1016/j.jacc.2021.04.003
17. Wong CX, Ganesan AN, Selvanayagam JB. Epicardial fat and atrial fibrillation: current evidence, potential mechanisms, clinical implications, and future directions. *Eur Heart J*. 2017;38:1294-1302. doi: 10.1093/eurheartj/ehw045
18. Greif M, Becker A, von Ziegler F, Lebherz C, Lehrke M, Broedl UC, Tittus J, Parhofer K, Becker C, Reiser M, et al. Pericardial adipose tissue determined by dual source CT is a risk factor for coronary atherosclerosis. *Arterioscler Thromb Vasc Biol*. 2009;29:781-786. doi: 10.1161/atvbaha.108.180653
19. Rosa MI, Grande AJ, Lima LD, Dondossola ER, Uggioni MLR, Hernandez AV, Tse G, Liu T, Pontes-Neto OM, Biondi-Zoccai G, et al. Association Between Epicardial Adipose Tissue and Stroke. *Front Cardiovasc Med*. 2021;8:658445. doi:

10.3389/fcvm.2021.658445

20. Tanami Y, Jinzaki M, Kishi S, Matheson M, Vavere AL, Rochitte CE, Dewey M, Chen MY, Clouse ME, Cox C, et al. Lack of association between epicardial fat volume and extent of coronary artery calcification, severity of coronary artery disease, or presence of myocardial perfusion abnormalities in a diverse, symptomatic patient population: results from the CORE320 multicenter study. *Circ Cardiovasc Imaging*. 2015;8:e002676. doi: 10.1161/circimaging.114.002676
21. Liu X, Post WS, McLenithan J, Terrin M, Magder L, Zeb I, Budoff M, Mitchell BD. Determinants of intrathoracic adipose tissue volume and associations with cardiovascular disease risk factors in Amish. *Nutr Metab Cardiovasc Dis*. 2014;24:286-293. doi: 10.1016/j.numecd.2013.09.015
22. Romijn MA, Danad I, Bakkum MJ, Stuijzand WJ, Tulevski, II, Somsen GA, Lammertsma AA, van Kuijk C, van de Ven PM, Min JK, et al. Incremental diagnostic value of epicardial adipose tissue for the detection of functionally relevant coronary artery disease. *Atherosclerosis*. 2015;242:161-166. doi: 10.1016/j.atherosclerosis.2015.07.005
23. Burgess S, Foley CN, Allara E, Staley JR, Howson JMM. A robust and efficient method for Mendelian randomization with hundreds of genetic variants. *Nat Commun*. 2020;11:376. doi: 10.1038/s41467-019-14156-4
24. Nattel S. Canadian Journal of Cardiology January 2013: genetics and more. *Can J Cardiol*.29:1-2. doi: 10.1016/j.cjca.2012.11.015
25. Salih A, Ardissino M, Wagen AZ, Bard A, Szabo L, Ryten M, Petersen SE, Altmann A,

- Raisi-Estabragh Z. Genome-Wide Association Study of Pericardial Fat Area in 28 161 UK Biobank Participants. *J Am Heart Assoc.* 2023;12:e030661. doi: 10.1161/jaha.123.030661
26. Burgess S, Butterworth A, Thompson SG. Mendelian randomization analysis with multiple genetic variants using summarized data. *Genet Epidemiol.* 2013;37:658-665. doi: 10.1002/gepi.21758
27. Malik R, Chauhan G, Traylor M, Sargurupremraj M, Okada Y, Mishra A, Rutten-Jacobs L, Giese AK, van der Laan SW, Gretarsdottir S, et al. Multiancestry genome-wide association study of 520,000 subjects identifies 32 loci associated with stroke and stroke subtypes. *Nat Genet.* 2018;50:524-537. doi: 10.1038/s41588-018-0058-3
28. Dönertaş HM, Fabian DK, Valenzuela MF, Partridge L, Thornton JM. Common genetic associations between age-related diseases. *Nat Aging.* 2021;1:400-412. doi: 10.1038/s43587-021-00051-5
29. Sakaue S, Kanai M, Tanigawa Y, Karjalainen J, Kurki M, Koshiha S, Narita A, Konuma T, Yamamoto K, Akiyama M, et al. A cross-population atlas of genetic associations for 220 human phenotypes. *Nat Genet.* 2021;53:1415-1424. doi: 10.1038/s41588-021-00931-x
30. Sudlow C, Gallacher J, Allen N, Beral V, Burton P, Danesh J, Downey P, Elliott P, Green J, Landray M, et al. UK biobank: an open access resource for identifying the causes of a wide range of complex diseases of middle and old age. *PLoS Med.* 2015;12:e1001779. doi: 10.1371/journal.pmed.1001779



31. Nikpay M, Goel A, Won HH, Hall LM, Willenborg C, Kanoni S, Saleheen D, Kyriakou T, Nelson CP, Hopewell JC, et al. A comprehensive 1,000 Genomes-based genome-wide association meta-analysis of coronary artery disease. *Nat Genet.* 2015;47:1121-1130. doi: 10.1038/ng.3396
32. Clarke L, Zheng-Bradley X, Smith R, Kulesha E, Xiao C, Toneva I, Vaughan B, Preuss D, Leinonen R, Shumway M, et al. The 1000 Genomes Project: data management and community access. *Nat Methods.* 2012;9:459-462. doi: 10.1038/nmeth.1974
33. Kamat MA, Blackshaw JA, Young R, Surendran P, Burgess S, Danesh J, Butterworth AS, Staley JR. PhenoScanner V2: an expanded tool for searching human genotype-phenotype associations. *Bioinformatics.* 2019;35:4851-4853. doi: 10.1093/bioinformatics/btz469
34. Palmer TM, Lawlor DA, Harbord RM, Sheehan NA, Tobias JH, Timpson NJ, Davey Smith G, Sterne JA. Using multiple genetic variants as instrumental variables for modifiable risk factors. *Stat Methods Med Res.* 2012;21:223-242. doi: 10.1177/0962280210394459
35. Burgess S, Bowden J, Fall T, Ingelsson E, Thompson SG. Sensitivity Analyses for Robust Causal Inference from Mendelian Randomization Analyses with Multiple Genetic Variants. *Epidemiology.* 2017;28:30-42. doi: 10.1097/ede.0000000000000559
36. Zhao Q, Wang J, Hemani G, Bowden J, Small DS. Statistical inference in two-sample summary-data Mendelian randomization using robust adjusted profile score. *The Annals of Statistics.* 2020;48:1742-1769, 1728.

37. Bowden J, Davey Smith G, Burgess S. Mendelian randomization with invalid instruments: effect estimation and bias detection through Egger regression. *Int J Epidemiol.* 2015;44:512-525. doi: 10.1093/ije/dyv080
38. Bowden J, Davey Smith G, Haycock PC, Burgess S. Consistent Estimation in Mendelian Randomization with Some Invalid Instruments Using a Weighted Median Estimator. *Genet Epidemiol.* 2016;40:304-314. doi: 10.1002/gepi.21965
39. Verbanck M, Chen CY, Neale B, Do R. Detection of widespread horizontal pleiotropy in causal relationships inferred from Mendelian randomization between complex traits and diseases. *Nat Genet.* 2018;50:693-698. doi: 10.1038/s41588-018-0099-7
40. Burgess S, Thompson SG. Interpreting findings from Mendelian randomization using the MR-Egger method. *Eur J Epidemiol.* 2017;32:377-389. doi: 10.1007/s10654-017-0255-x
41. Relton CL, Davey Smith G. Two-step epigenetic Mendelian randomization: a strategy for establishing the causal role of epigenetic processes in pathways to disease. *Int J Epidemiol.* 2012;41:161-176. doi: 10.1093/ije/dyr233
42. MacKinnon DP, Fairchild AJ, Fritz MS. Mediation analysis. *Annu Rev Psychol.* 2007;58:593-614. doi: 10.1146/annurev.psych.58.110405.085542
43. Romero-Corral A, Somers VK, Sierra-Johnson J, Thomas RJ, Collazo-Clavell ML, Korinek J, Allison TG, Batsis JA, Sert-Kuniyoshi FH, Lopez-Jimenez F. Accuracy of body mass index in diagnosing obesity in the adult general population. *Int J Obes (Lond).* 2008;32:959-966. doi: 10.1038/ijo.2008.11
44. Bosy-Westphal A, Booke C-A, Blöcker T, Kossel E, Goele K, Later W, Hitze B, Heller

- M, Glüer C-C, Müller MJ. Measurement site for waist circumference affects its accuracy as an index of visceral and abdominal subcutaneous fat in a Caucasian population. *J Nutr*.140:954-961. doi: 10.3945/jn.109.118737
45. Pugliese NR, Paneni F, Mazzola M, De Biase N, Del Punta L, Gargani L, Mengozzi A, Viridis A, Nesti L, Taddei S, et al. Impact of epicardial adipose tissue on cardiovascular haemodynamics, metabolic profile, and prognosis in heart failure. *Eur J Heart Fail*. 2021;23:1858-1871. doi: 10.1002/ejhf.2337
46. Zhu W, Zhang H, Guo L, Hong K. Relationship between epicardial adipose tissue volume and atrial fibrillation : A systematic review and meta-analysis. *Herz*. 2016;41:421-427. doi: 10.1007/s00059-015-4387-z
47. Iacobellis G, Lonn E, Lamy A, Singh N, Sharma AM. Epicardial fat thickness and coronary artery disease correlate independently of obesity. *Int J Cardiol*. 2011;146:452-454. doi: 10.1016/j.ijcard.2010.10.117
48. Chong B, Jayabaskaran J, Ruban J, Goh R, Chin YH, Kong G, Ng CH, Lin C, Loong S, Muthiah MD, et al. Epicardial Adipose Tissue Assessed by Computed Tomography and Echocardiography Are Associated With Adverse Cardiovascular Outcomes: A Systematic Review and Meta-Analysis. *Circ Cardiovasc Imaging*. 2023;16:e015159. doi: 10.1161/circimaging.122.015159
49. Park J, Park CH, Lee HJ, Wi J, Uhm JS, Pak HN, Lee M, Kim YJ, Joung B. Left atrial wall thickness rather than epicardial fat thickness is related to complex fractionated atrial electrogram. *Int J Cardiol*. 2014;172:e411-413. doi: 10.1016/j.ijcard.2013.12.255
50. Chaowalit N, Somers VK, Pellikka PA, Rihal CS, Lopez-Jimenez F. Subepicardial

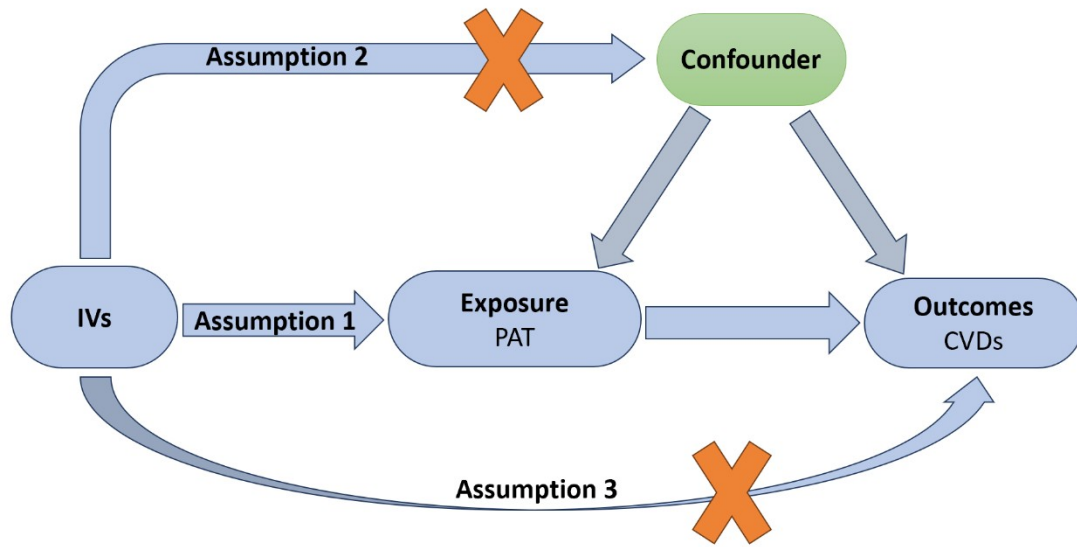
adipose tissue and the presence and severity of coronary artery disease.

*Atherosclerosis*. 2006;186:354-359. doi: 10.1016/j.atherosclerosis.2005.08.004

51. Yu X, Newland SA, Zhao TX, Lu Y, Sage AS, Sun Y, Sriranjana RS, Ma MKL, Lam BYH, Nus M, et al. Innate Lymphoid Cells Promote Recovery of Ventricular Function After Myocardial Infarction. *J Am Coll Cardiol*. 2021;78:1127-1142. doi: 10.1016/j.jacc.2021.07.018
52. Pierdomenico SD, Pierdomenico AM, Cuccurullo F, Iacobellis G. Meta-analysis of the relation of echocardiographic epicardial adipose tissue thickness and the metabolic syndrome. *Am J Cardiol*. 2013;111:73-78. doi: 10.1016/j.amjcard.2012.08.044
53. Baker AR, Silva NF, Quinn DW, Harte AL, Pagano D, Bonser RS, Kumar S, McTernan PG. Human epicardial adipose tissue expresses a pathogenic profile of adipocytokines in patients with cardiovascular disease. *Cardiovasc Diabetol*. 2006;5:1. doi: 10.1186/1475-2840-5-1
54. Villasante Fricke AC, Iacobellis G. Epicardial Adipose Tissue: Clinical Biomarker of Cardio-Metabolic Risk. *Int J Mol Sci*. 2019;20. doi: 10.3390/ijms20235989
55. Mullens W, Martens P. Empagliflozin-Induced Changes in Epicardial Fat: The Centerpiece for Myocardial Protection? *JACC Heart Fail*. 2021;9:590-593. doi: 10.1016/j.jchf.2021.05.006
56. van Eyk HJ, Paiman EHM, Bizino MB, de Heer P, Geelhoed-Duijvestijn PH, Kharagjitsingh AV, Smit JWA, Lamb HJ, Rensen PCN, Jazet IM. A double-blind, placebo-controlled, randomised trial to assess the effect of liraglutide on ectopic fat accumulation in South Asian type 2 diabetes patients. *Cardiovasc Diabetol*.

2019;18:87. doi: 10.1186/s12933-019-0890-5

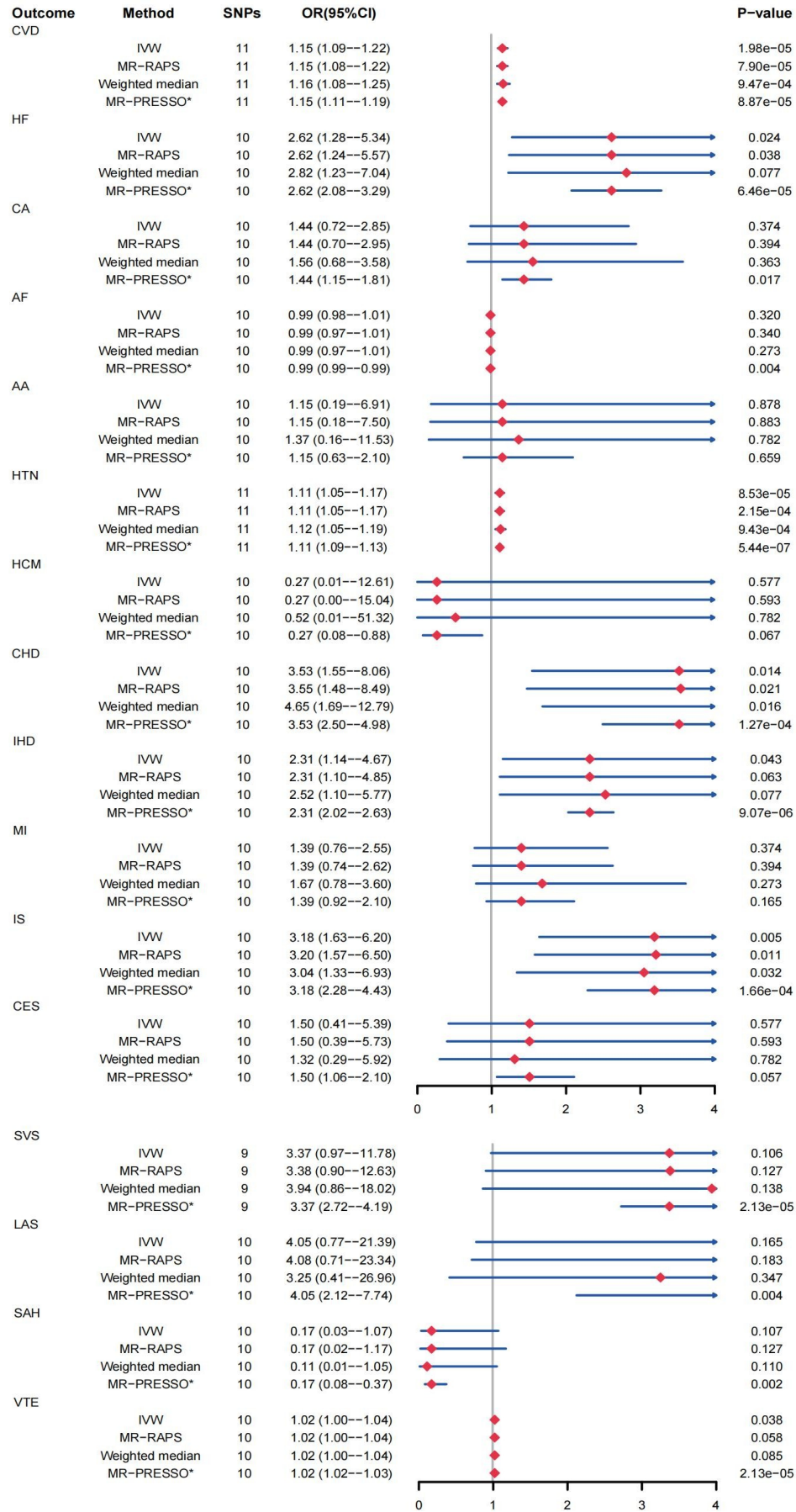
57. Saura D, Oliva MJ, Rodríguez D, Pascual-Figal DA, Hurtado JA, Pinar E, de la Morena G, Valdés M. Reproducibility of echocardiographic measurements of epicardial fat thickness. *Int J Cardiol.* 2010;141:311-313. doi: 10.1016/j.ijcard.2008.11.127
58. Pierce BL, Burgess S. Efficient design for Mendelian randomization studies: subsample and 2-sample instrumental variable estimators. *Am J Epidemiol.* 2013;178:1177-1184. doi: 10.1093/aje/kwt084



**Figure 1. Flowchart of the MR research.**

Instrumental variants (IVs) fulfill three principal assumptions: (1) directly related to exposure; (2) separate from confounders; and (3) act on outcomes just through exposure.

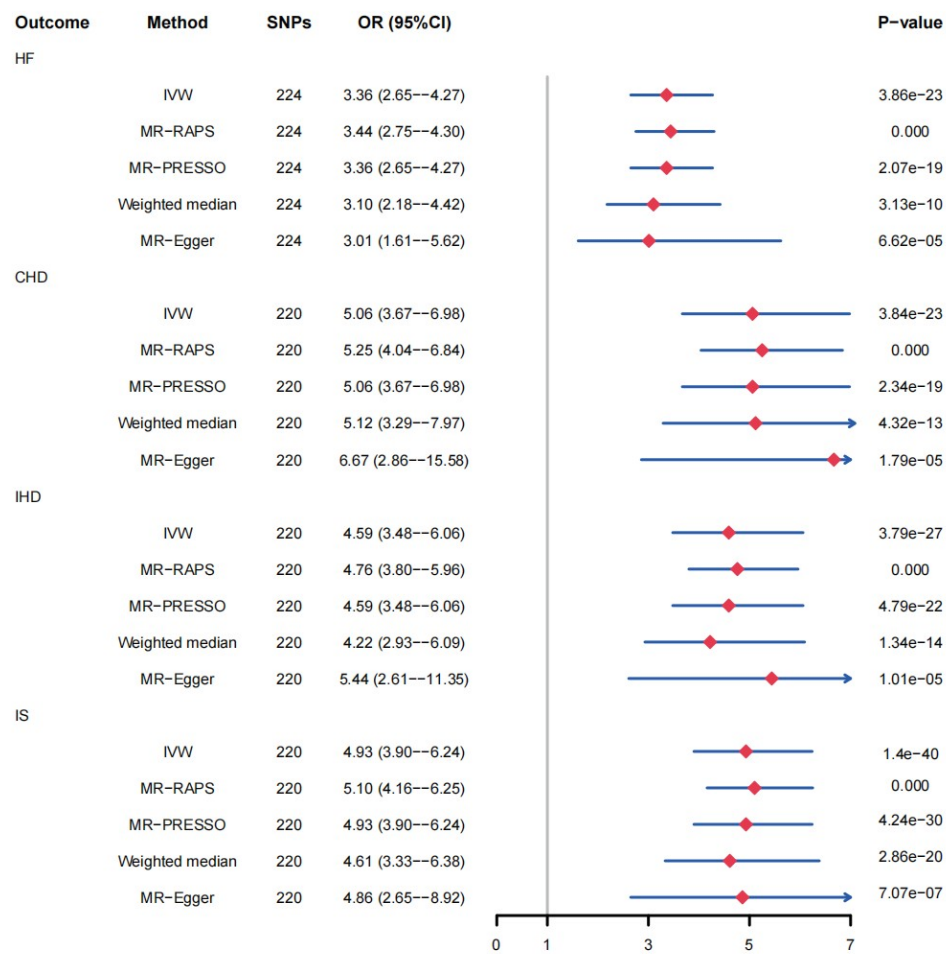
MR, mendelian randomization.





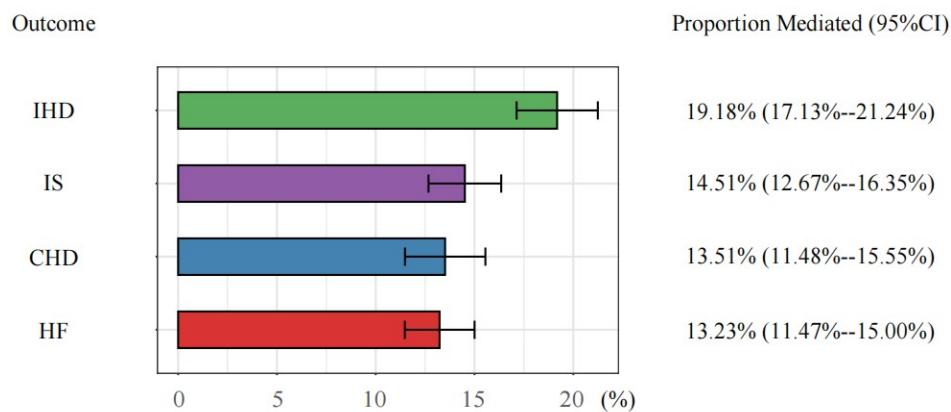
**Figure 2. MR estimates of PAT on CVDs.**

CI, confidence interval; IVW, inverse-variance weighted; MR, Mendelian randomization; MR-RAPS, MR-robust adjusted profile score; MR-PRESSO, MR-pleiotropy residual sum and outlier; OR, odds ratio; SNPs, single nucleotide polymorphisms; \*no outlier; AA, aortic aneurysm; AF, atrial fibrillation; CA, cardiac arrhythmias; CES, cardioembolic stroke; CHD, coronary heart disease; CVD, cardiovascular disease; CVDs, cardiovascular diseases; HCM, hypertrophic cardiomyopathy; HF, heart failure; HTN, hypertension; IHD, ischemic heart disease; IS, ischemic stroke; LAS, large artery stroke; MI, myocardial infarction; PAT, pericardial adipose tissue; SAH, subarachnoid hemorrhage; SVS, small vessel stroke; VTE, venous thromboembolism.



**Figure 3. MR estimates of HTN on CVDs.**

CI, confidence interval; IVW, inverse-variance weighted; MR, Mendelian randomization; MR-RAPS, MR-robust adjusted profile score; MR-PRESSO, MR-pleiotropy residual sum and outlier; OR, odds ratio; SNPs, single nucleotide polymorphisms; CHD, coronary heart disease; CVDs, cardiovascular diseases; HF, heart failure; HTN, hypertension; IHD, ischemic heart disease; IS, ischemic stroke.



**Figure 4. MR estimates of proportions mediated by HTN between PAT and CVDs.**

CI, confidence interval; MR, Mendelian randomization; CHD, coronary heart disease; CVDs, cardiovascular diseases; HF, heart failure; HTN, hypertension; IHD, ischemic heart disease; IS, ischemic stroke; PAT, pericardial adipose tissue.