

Table S1. Mild AD phenotype across genotype groups defined by *BCHE-K* allele frequency.

Variable			2 <i>BCHE-K</i> & 1 <i>BCHE-K</i> (n=16)	2 <i>BCHE-K</i> (n=3)	1 <i>BCHE-K</i> (n=13)	No <i>BCHE-K</i> (n=29)
Sex	Female		9 (56.3%)	2 (66.7%)	7 (53.8%)	13 (44.8%)
	Male		7 (43.8%)	1 (33.3%)	6 (46.2%)	16 (55.2%)
Onset of AD	Age-at-diagnosis (yrs)	Mean (SD, SEM)	61.63 (6.51, 1.63)	59.37 (5.44, 3.14)	62.16 (6.82, 1.89)	66.02 (5.30, 0.98)
		Median (P25, P75)	61.58 (56.64, 66.08)	57.92 (54.80, 65.39)	61.89 (56.69, 66.33)	66.48 (63.10, 70.23)
		(Min, Max)	(49.04, 74.13)	(54.80, 65.39)	(49.04, 74.13)	(47.99, 72.79)
	Age-at-baseline (yrs)	Mean (SD, SEM)	62.9 (6.2, 1.6)	60.0 (5.6, 3.2)	63.6 (6.4, 1.8)	67.4 (4.9, 0.9)
		Median (P25, P75)	63.0 (59.0, 67.5)	59.0 (55.0, 66.0)	63.0 (59.0, 68.0)	67.0 (66.0, 71.0)
		(Min, Max)	(50.0, 74.0)	(55.0, 66.0)	(50.0, 74.0)	(52.0, 74.0)
	Time since AD diagnosis at baseline (yrs)	Mean (SD, SEM)	1.30 (1.18, 0.29)	0.63 (0.44, 0.25)	1.46 (1.25, 0.35)	1.36 (1.38, 0.26)
		Median (P25, P75)	1.02 (0.59, 1.88)	0.61 (0.20, 1.08)	1.11 (0.67, 2.17)	1.36 (0.21, 2.37)
		(Min, Max)	(-0.13, 4.37)	(0.20, 1.08)	(-0.13, 4.37)	(-1.04, 4.01)
Neuroimaging	Hippocampal vol., % of ICV	Mean (SD, SEM)	0.27 (0.04, 0.01)	0.27 (0.02, 0.01)	0.27 (0.04, 0.01)	0.25 (0.04, 0.01)
		Median (P25, P75)	0.27 (0.26, 0.29)	0.27 (0.25, 0.29)	0.27 (0.27, 0.29)	0.24 (0.22, 0.27)
		(Min, Max)	(0.17, 0.33)	(0.25, 0.29)	(0.17, 0.33)	(0.19, 0.34)
	Ventricular vol., % of ICV	Mean (SD, SEM)	2.72 (1.38, 0.35)	1.84 (0.76, 0.44)	2.93 (1.43, 0.40)	2.82 (1.19, 0.22)
		Median (P25, P75)	2.38 (1.81, 3.58)	1.75 (1.12, 2.65)	2.80 (2.00, 3.86)	2.67 (1.94, 3.49)
		(Min, Max)	(1.07, 6.20)	(1.12, 2.65)	(1.07, 6.20)	(1.02, 5.11)
CSF markers	Aβ ₄₀ , pg/mL	Mean (SD, SEM)	17.44 (3.95, 0.99)	18.60 (4.28, 2.47)	17.18 (4.01, 1.11)	18.20 (4.46, 0.83)

Variable		2 BCHE-K & 1 BCHE-K (n=16)	2 BCHE-K (n=3)	1 BCHE-K (n=13)	No BCHE-K (n=29)
Aβ ₄₂ , pg/mL	Median (P25, P75)	16.76 (14.66, 20.76)	16.56 (15.73, 23.52)	16.96 (14.65, 20.52)	17.68 (16.31, 19.42)
	(Min, Max)	(9.95, 23.52)	(15.73, 23.52)	(9.95, 22.74)	(10.73, 28.40)
	Mean (SD, SEM)	676.1 (160.9, 40.2)	657.3 (220.2, 127.1)	680.5 (155.5, 43.1)	713.2 (198.1, 36.8)
Aβ ₄₂ to Aβ ₄₀ ratio	Median (P25, P75)	653.5 (570.1, 805.0)	675.8 (428.5, 867.7)	642.3 (572.0, 804.8)	687.1 (592.2, 864.6)
	(Min, Max)	(428.5, 1039.0)	(428.5, 867.7)	(491.4, 1039.0)	(340.4, 1126.0)
	Mean (SD, SEM)	0.0400 (0.0075, 0.0019)	0.0364 (0.0102, 0.0059)	0.0409 (0.0071, 0.0020)	0.0389 (0.0075, 0.0014)
Total-tau	Median (P25, P75)	0.0423 (0.0342, 0.0462)	0.0370 (0.0259, 0.0463)	0.0438 (0.0344, 0.0461)	0.0385 (0.0335, 0.0446)
	(Min, Max)	(0.0259, 0.0504)	(0.0259, 0.0463)	(0.0287, 0.0504)	(0.0255, 0.0517)
	Mean (SD, SEM)	398.16 (108.96, 27.24)	405.18 (139.05, 80.28)	396.53 (107.72, 29.88)	399.13 (141.17, 26.22)
p-tau ₁₈₁ , pg/mL	Median (P25, P75)	388.45 (304.88, 480.70)	330.95 (319.00, 565.60)	405.60 (290.75, 464.70)	345.10 (313.45, 454.90)
	(Min, Max)	(221.05, 565.60)	(319.00, 565.60)	(221.05, 556.10)	(212.00, 811.75)
	Mean (SD, SEM)	41.06 (12.91, 3.23)	41.95 (13.93, 8.05)	40.85 (13.25, 3.68)	39.11 (14.30, 2.65)
NfL, pg/mL	Median (P25, P75)	38.96 (31.52, 51.20)	36.07 (31.91, 57.86)	39.36 (31.12, 48.31)	35.57 (30.29, 44.83)
	(Min, Max)	(19.71, 63.98)	(31.91, 57.86)	(19.71, 63.98)	(20.55, 81.28)
	Mean (SD, SEM)	1368.151 (416.737, 104.184)	1250.411 (270.156, 155.974)	1395.322 (447.949, 124.239)	1279.087 (395.142, 73.376)
Ng, pg/mL	Median (P25, P75)	1270.970 (1139.410, 1538.598)	1213.900 (1000.368, 1536.965)	1296.260 (1167.610, 1540.230)	1325.795 (999.923, 1564.960)
	(Min, Max)	(630.833, 2391.810)	(1000.368, 1536.965)	(630.833, 2391.810)	(580.969, 2223.485)
	Mean (SD, SEM)	559.330 (199.224, 49.806)	560.000 (238.627, 137.771)	559.176 (200.305, 55.555)	508.231 (250.610, 46.537)
Ng, pg/mL	Median (P25, P75)	541.329 (392.145, 744.592)	538.994 (332.570, 808.435)	543.664 (422.006, 738.869)	470.174 (315.335, 562.083)
	(Min, Max)	(237.776, 905.365)	(332.570, 808.435)	(237.776, 905.365)	(194.618, 1306.915)

Variable		2 BCHE-K & 1 BCHE-K (n=16)	2 BCHE-K (n=3)	1 BCHE-K (n=13)	No BCHE-K (n=29)	
	YKL-40, pg/mL	Mean (SD, SEM)	279704.0 (152934.4, 38233.6)	226656.3 (75313.2, 43482.1)	291945.8 (165604.8, 45930.5)	258422.6 (109116.7, 20262.5)
		Median (P25, P75)	230043.5 (147203.5, 382781.8)	239378.0 (145792.5, 294798.5)	220709.0 (148614.5, 385381.5)	236943.0 (202933.5, 300130.5)
		(Min, Max)	(98750.8, 598333.5)	(145792.5, 294798.5)	(98750.8, 598333.5)	(112021.5, 662666.5)
Cognition	MMSE Total (0-30)	Mean (SD, SEM)	23.7 (2.4, 0.6)	22.3 (1.5, 0.9)	24.0 (2.5, 0.7)	23.6 (2.2, 0.4)
		Median (P25, P75)	24.5 (21.5, 26.0)	22.0 (21.0, 24.0)	25.0 (22.0, 26.0)	23.0 (22.0, 26.0)
		(Min, Max)	(20.0, 27.0)	(21.0, 24.0)	(20.0, 27.0)	(20.0, 27.0)
	MMSE Memory (0-6)	Mean (SD, SEM)	4.0 (1.1, 0.3)	3.3 (0.6, 0.3)	4.2 (1.1, 0.3)	4.3 (1.1, 0.2)
		Median (P25, P75)	4.0 (3.0, 4.5)	3.0 (3.0, 4.0)	4.0 (4.0, 5.0)	4.0 (3.0, 5.0)
		(Min, Max)	(2.0, 6.0)	(3.0, 4.0)	(2.0, 6.0)	(3.0, 6.0)
	MMSE Visual Construction (0-1)	Mean (SD, SEM)	0.8 (0.4, 0.1)	0.7 (0.6, 0.3)	0.8 (0.4, 0.1)	0.6 (0.5, 0.1)
		Median (P25, P75)	1.0 (0.5, 1.0)	1.0 (0.0, 1.0)	1.0 (1.0, 1.0)	1.0 (0.0, 1.0)
		(Min, Max)	(0.0, 1.0)	(0.0, 1.0)	(0.0, 1.0)	(0.0, 1.0)
	RBANS Total (40-160)	Mean (SD, SEM)	67.5 (11.5, 2.9)	63.3 (15.6, 9.0)	68.5 (10.9, 3.0)	67.1 (12.0, 2.2)
		Median (P25, P75)	71.5 (56.0, 77.0)	61.0 (49.0, 80.0)	72.0 (57.0, 77.0)	66.0 (59.0, 76.0)
		(Min, Max)	(49.0, 82.0)	(49.0, 80.0)	(51.0, 82.0)	(49.0, 90.0)
	RBANS Delayed Memory (40-154)	Mean (SD, SEM)	57.8 (19.2, 4.8)	58.7 (22.7, 13.1)	57.6 (19.4, 5.4)	51.8 (13.3, 2.5)
		Median (P25, P75)	50.0 (44.0, 66.0)	52.0 (40.0, 84.0)	48.0 (44.0, 64.0)	48.0 (44.0, 52.0)
		(Min, Max)	(40.0, 102.0)	(40.0, 84.0)	(40.0, 102.0)	(40.0, 94.0)
	RBANS Visuospatial/ Constructional (40-154)	Mean (SD, SEM)	86.9 (24.1, 6.0)	79.0 (36.4, 21.0)	88.8 (22.1, 6.1)	84.2 (20.5, 3.8)
		Median (P25, P75)	78.0	60.0	78.0	84.0

Onset of Alzheimer disease in apolipoprotein ε4 carriers is earlier in butyrylcholinesterase K variant carriers

Variable		2 BCHE-K & 1 BCHE-K (n=16)	2 BCHE-K (n=3)	1 BCHE-K (n=13)	No BCHE-K (n=29)
		(64.0, 105.0)	(56.0, 121.0)	(72.0, 105.0)	(64.0, 102.0)
	(Min, Max)	(56.0, 126.0)	(56.0, 121.0)	(62.0, 126.0)	(50.0, 121.0)
RBANS Immediate Memory (40-154)	Mean (SD, SEM)	62.6 (17.0, 4.2)	60.7 (18.0, 10.4)	63.1 (17.5, 4.9)	68.2 (15.3, 2.8)
	Median (P25, P75)	63.0 (49.0, 73.0)	69.0 (40.0, 73.0)	57.0 (49.0, 73.0)	61.0 (57.0, 78.0)
	(Min, Max)	(40.0, 100.0)	(40.0, 73.0)	(40.0, 100.0)	(44.0, 103.0)
RBANS Language (40-154)	Mean (SD, SEM)	88.2 (9.2, 2.3)	91.3 (6.4, 3.7)	87.5 (9.8, 2.7)	87.1 (14.0, 2.6)
	Median (P25, P75)	90.0 (82.0, 94.0)	94.0 (84.0, 96.0)	90.0 (82.0, 92.0)	92.0 (83.0, 96.0)
	(Min, Max)	(71.0, 108.0)	(84.0, 96.0)	(71.0, 108.0)	(51.0, 104.0)
RBANS Attention (40-154)	Mean (SD, SEM)	74.4 (14.4, 3.6)	58.0 (12.3, 7.1)	78.2 (12.3, 3.4)	77.7 (15.2, 2.8)
	Median (P25, P75)	73.5 (68.0, 85.0)	53.0 (49.0, 72.0)	75.0 (72.0, 85.0)	75.0 (64.0, 85.0)
	(Min, Max)	(49.0, 100.0)	(49.0, 72.0)	(53.0, 100.0)	(53.0, 118.0)

ICV, intracranial volume; MMSE, Mini-Mental Status Examination; RBANS, Repeatable Battery for the Assessment of Neuropsychological Status; SD, standard deviation; SEM, standard error of the mean.

Table S2. Mild AD phenotype across genotype groups defined by *APOE4* allele frequency and for *APOE4* homozygotes by the presence of *BCHE-K* alleles.

Variable			2 <i>APOE4</i> & <i>BCHE-K</i> (N = 4)	2 <i>APOE4</i> (N = 10)	1 <i>APOE4</i> (N = 23)	No <i>APOE4</i> (N = 12)	1 or 2 <i>APOE4</i> (N = 33)
Sex	Female		3 (75.0%)	6 (60.0%)	12 (52.2%)	4 (33.3%)	18 (54.5%)
	Male		1 (25.0%)	4 (40.0%)	11 (47.8%)	8 (66.7%)	15 (45.5%)
Onset of AD	Age-at-diagnosis (yrs)	Mean (SD, SEM)	60.77 (4.41, 2.20)	64.16 (5.38, 1.70)	65.21 (5.77, 1.20)	63.28 (7.36, 2.12)	64.89 (5.59, 0.97)
		Median (P25, P75)	61.45 (57.90, 63.64)	63.03 (61.00, 67.84)	66.31 (63.10, 69.08)	62.72 (58.54, 69.31)	65.83 (62.67, 68.44)
		(Min, Max)	(54.80, 65.39)	(54.80, 72.79)	(49.04, 72.44)	(47.99, 74.13)	(49.04, 72.79)
	Age-at-baseline (yrs)	Mean (SD, SEM)	62.0 (4.8, 2.4)	65.4 (5.4, 1.7)	66.6 (5.6, 1.2)	64.6 (6.5, 1.9)	66.2 (5.5, 1.0)
		Median (P25, P75)	63.5 (59.0, 65.0)	65.0 (63.0, 68.0)	67.0 (63.0, 71.0)	66.0 (59.5, 70.0)	67.0 (63.0, 70.0)
		(Min, Max)	(55.0, 66.0)	(55.0, 73.0)	(50.0, 74.0)	(52.0, 74.0)	(50.0, 74.0)
	Time since AD diagnosis at baseline (yrs)	Mean (SD, SEM)	1.23 (1.24, 0.62)	1.24 (1.23, 0.39)	1.40 (1.27, 0.26)	1.31 (1.49, 0.43)	1.35 (1.24, 0.22)
		Median (P25, P75)	0.86 (0.41, 2.05)	0.86 (0.21, 1.65)	1.36 (0.52, 2.37)	0.96 (0.21, 2.30)	1.15 (0.33, 2.37)
		(Min, Max)	(0.20, 3.00)	(0.16, 3.61)	(-1.04, 4.37)	(-0.63, 4.01)	(-1.04, 4.37)
Neuroimaging	Hippocampal vol., % of ICV	Mean (SD, SEM)	0.26 (0.05, 0.03)	0.24 (0.04, 0.01)	0.25 (0.04, 0.01)	0.28 (0.03, 0.01)	0.25 (0.04, 0.01)
		Median (P25, P75)	0.28 (0.23, 0.29)	0.24 (0.23, 0.27)	0.25 (0.21, 0.27)	0.29 (0.27, 0.30)	0.24 (0.22, 0.27)
		(Min, Max)	(0.18, 0.29)	(0.18, 0.29)	(0.17, 0.34)	(0.22, 0.32)	(0.17, 0.34)
	Ventricular vol., % of ICV	Mean (SD, SEM)	1.77 (0.73, 0.36)	1.84 (0.53, 0.17)	3.26 (1.32, 0.28)	2.66 (1.08, 0.31)	2.83 (1.31, 0.23)
		Median (P25, P75)	1.66 (1.18, 2.37)	1.81 (1.36, 2.23)	2.98 (2.07, 4.34)	2.49 (1.92, 3.29)	2.65 (1.94, 3.86)
		(Min, Max)	(1.12, 2.65)	(1.12, 2.65)	(1.02, 6.20)	(1.07, 5.11)	(1.02, 6.20)
CSF markers	Aβ ₄₀ , pg/mL	Mean (SD, SEM)	16.86	17.11	17.64	19.18	17.48

Onset of Alzheimer disease in apolipoprotein ε4 carriers is earlier in butyrylcholinesterase K variant carriers

Variable	2 APOE4 & BCHE-K (N = 4)	2 APOE4 (N = 10)	1 APOE4 (N = 23)	No APOE4 (N = 12)	1 or 2 APOE4 (N = 33)	
	(2.56, 1.28)	(1.61, 0.51)	(5.02, 1.05)	(4.19, 1.21)	(4.25, 0.74)	
	Median (P25, P75)	16.14 (15.19, 18.54)	16.76 (16.54, 18.11)	16.54 (14.67, 20.99)	19.43 (16.22, 22.30)	16.66 (15.73, 19.12)
	(Min, Max)	(14.65, 20.52)	(14.65, 20.52)	(9.95, 28.40)	(11.99, 25.34)	(9.95, 28.40)
Aβ ₄₂ , pg/mL	Mean (SD, SEM)	553.9 (110.6, 55.3)	580.7 (109.6, 34.7)	700.2 (188.0, 39.2)	799.2 (179.6, 51.9)	664.0 (175.4, 30.5)
	Median (P25, P75)	555.7 (464.5, 643.4)	587.5 (479.8, 661.5)	687.1 (582.7, 849.7)	823.3 (638.0, 900.1)	661.5 (563.9, 773.6)
	(Min, Max)	(428.5, 675.8)	(428.5, 767.3)	(340.4, 1059.5)	(568.3, 1126.0)	(340.4, 1059.5)
Aβ ₄₂ to Aβ ₄₀ ratio	Mean (SD, SEM)	0.0342 (0.0087, 0.0044)	0.0342 (0.0074, 0.0024)	0.0399 (0.0063, 0.0013)	0.0426 (0.0078, 0.0023)	0.0382 (0.0071, 0.0012)
	Median (P25, P75)	0.0322 (0.0281, 0.0402)	0.0338 (0.0259, 0.0400)	0.0409 (0.0347, 0.0446)	0.0458 (0.0357, 0.0492)	0.0385 (0.0335, 0.0438)
	(Min, Max)	(0.0259, 0.0463)	(0.0255, 0.0463)	(0.0267, 0.0504)	(0.0287, 0.0517)	(0.0255, 0.0504)
Total-tau	Mean (SD, SEM)	333.40 (99.21, 49.61)	353.51 (95.01, 30.04)	414.17 (144.58, 30.15)	407.03 (123.68, 35.70)	395.79 (133.09, 23.17)
	Median (P25, P75)	324.98 (270.03, 396.78)	327.60 (313.45, 345.10)	384.10 (290.20, 510.25)	395.68 (308.75, 486.88)	346.75 (313.45, 464.70)
	(Min, Max)	(221.05, 462.60)	(221.05, 566.80)	(212.00, 811.75)	(251.75, 659.30)	(212.00, 811.75)
p-tau ₁₈₁ , pg/mL	Mean (SD, SEM)	34.00 (11.80, 5.90)	35.18 (9.31, 2.94)	41.05 (15.24, 3.18)	41.27 (13.79, 3.98)	39.27 (13.84, 2.41)
	Median (P25, P75)	33.99 (25.81, 42.19)	32.96 (31.04, 36.07)	39.36 (28.28, 53.22)	38.45 (30.01, 51.29)	36.03 (31.04, 48.31)
	(Min, Max)	(19.71, 48.31)	(19.71, 52.59)	(20.55, 81.28)	(23.03, 69.12)	(19.71, 81.28)
NfL, pg/mL	Mean (SD, SEM)	1003.178 (264.632, 132.316)	1038.510 (319.069, 100.899)	1383.129 (438.081, 91.346)	1398.905 (296.255, 85.521)	1278.699 (431.788, 75.165)
	Median (P25, P75)	1083.989 (815.600, 1190.755)	1074.329 (737.715, 1167.610)	1395.075 (1091.940, 1572.575)	1358.548 (1178.445, 1615.488)	1192.395 (1000.368, 1540.230)
	(Min, Max)	(630.833, 1213.900)	(630.833, 1718.680)	(580.969, 2391.810)	(999.923, 1992.835)	(580.969, 2391.810)
Ng, pg/mL	Mean (SD, SEM)	493.087 (187.517, 93.759)	481.615 (119.604, 37.822)	546.251 (270.939, 56.495)	525.671 (235.097, 67.867)	526.664 (235.375, 40.973)
	Median (P25, P75)	450.454 (347.242, 638.931)	472.203 (369.620, 538.994)	479.523 (307.055, 684.491)	460.332 (338.809, 696.191)	474.233 (369.620, 582.299)

Variable		2 APOE4 & BCHE-K (N = 4)	2 APOE4 (N = 10)	1 APOE4 (N = 23)	No APOE4 (N = 12)	1 or 2 APOE4 (N = 33)	
		(Min, Max)	(332.570, 738.869)	(332.570, 738.869)	(194.618, 1306.915)	(237.776, 1013.229)	(194.618, 1306.915)
	YKL-40, pg/mL	Mean (SD, SEM)	190012.7 (86035.8, 43017.9)	201544.9 (63834.1, 20186.1)	267090.9 (114893.9, 23957.0)	317581.8 (161891.7, 46734.1)	247228.5 (105627.6, 18387.4)
		Median (P25, P75)	183250.8 (122271.6, 257753.8)	223078.0 (145792.5, 242007.5)	252314.0 (197204.5, 321401.5)	256480.3 (204270.8, 433662.3)	235441.5 (189715.0, 294798.5)
		(Min, Max)	(98750.8, 294798.5)	(98750.8, 294798.5)	(125213.5, 598333.5)	(131158.5, 662666.5)	(98750.8, 598333.5)
Cognition	MMSE Total (0-30)	Mean (SD, SEM)	24.3 (2.5, 1.3)	24.4 (2.1, 0.7)	23.3 (2.3, 0.5)	23.7 (2.2, 0.6)	23.6 (2.3, 0.4)
		Median (P25, P75)	24.5 (22.5, 26.0)	24.5 (23.0, 26.0)	23.0 (21.0, 25.0)	23.5 (21.5, 26.0)	24.0 (22.0, 26.0)
		(Min, Max)	(21.0, 27.0)	(21.0, 27.0)	(20.0, 27.0)	(21.0, 26.0)	(20.0, 27.0)
	MMSE Memory (0-6)	Mean (SD, SEM)	4.0 (1.4, 0.7)	4.1 (1.0, 0.3)	4.0 (1.1, 0.2)	4.6 (1.2, 0.4)	4.1 (1.1, 0.2)
		Median (P25, P75)	3.5 (3.0, 5.0)	4.0 (3.0, 5.0)	4.0 (3.0, 4.0)	4.5 (3.5, 6.0)	4.0 (3.0, 4.0)
		(Min, Max)	(3.0, 6.0)	(3.0, 6.0)	(2.0, 6.0)	(3.0, 6.0)	(2.0, 6.0)
	MMSE Visual Construction (0-1)	Mean (SD, SEM)	0.8 (0.5, 0.3)	0.8 (0.4, 0.1)	0.7 (0.5, 0.1)	0.5 (0.5, 0.2)	0.7 (0.5, 0.1)
		Median (P25, P75)	1.0 (0.5, 1.0)	1.0 (1.0, 1.0)	1.0 (0.0, 1.0)	0.5 (0.0, 1.0)	1.0 (0.0, 1.0)
		(Min, Max)	(0.0, 1.0)	(0.0, 1.0)	(0.0, 1.0)	(0.0, 1.0)	(0.0, 1.0)
	RBANS Total (40-160)	Mean (SD, SEM)	72.8 (8.3, 4.2)	73.4 (10.5, 3.3)	64.0 (11.2, 2.3)	68.5 (12.3, 3.5)	66.8 (11.7, 2.0)
		Median (P25, P75)	75.0 (67.0, 78.5)	78.0 (61.0, 80.0)	61.0 (54.0, 73.0)	67.5 (61.5, 78.5)	66.0 (57.0, 77.0)
		(Min, Max)	(61.0, 80.0)	(57.0, 85.0)	(49.0, 88.0)	(49.0, 90.0)	(49.0, 88.0)
	RBANS Delayed Memory (40-154)	Mean (SD, SEM)	56.0 (19.3, 9.7)	52.8 (12.5, 3.9)	48.0 (7.4, 1.6)	66.3 (22.5, 6.5)	49.5 (9.3, 1.6)
		Median (P25, P75)	50.0 (44.0, 68.0)	50.0 (44.0, 56.0)	48.0 (44.0, 48.0)	60.0 (48.0, 91.5)	48.0 (44.0, 52.0)
		(Min, Max)	(40.0, 84.0)	(40.0, 84.0)	(40.0, 68.0)	(40.0, 102.0)	(40.0, 84.0)
	RBANS Visuospatial/ Constructional	Mean (SD, SEM)	101.8 (28.8, 14.4)	100.8 (20.0, 6.3)	81.1 (19.8, 4.1)	79.9 (21.7, 6.3)	87.1 (21.6, 3.8)

Onset of Alzheimer disease in apolipoprotein ε4 carriers is earlier in butyrylcholinesterase K variant carriers

Variable		2 APOE4 & BCHE-K (N = 4)	2 APOE4 (N = 10)	1 APOE4 (N = 23)	No APOE4 (N = 12)	1 or 2 APOE4 (N = 33)
(40-154)	Median (P25, P75)	113.0 (82.5, 121.0)	102.5 (84.0, 121.0)	78.0 (64.0, 105.0)	79.5 (61.0, 99.0)	84.0 (69.0, 105.0)
	(Min, Max)	(60.0, 121.0)	(60.0, 121.0)	(50.0, 126.0)	(50.0, 116.0)	(50.0, 126.0)

ICV, intracranial volume; MMSE, Mini-Mental Status Examination; RBANS, Repeatable Battery for the Assessment of Neuropsychological Status; SD, standard deviation; SEM, standard error of the mean.

Table S3. Mild AD phenotype across genotype groups defined by *APOE4* and *BCHE-K* carrier status.

Variable			<i>APOE4</i> & <i>BCHE-K</i> (N = 11)	<i>APOE4</i> & No- <i>BCHE-K</i> (N = 22)	No- <i>APOE4</i> & <i>BCHE-K</i> (N = 5)	No- <i>APOE4</i> & No- <i>BCHE-K</i> (N = 7)
Sex	Female		7 (63.6%)	11 (50.0%)	2 (40.0%)	2 (28.6%)
	Male		4 (36.4%)	11 (50.0%)	3 (60.0%)	5 (71.4%)
Onset of AD	Age-at-diagnosis (yrs)	Mean (SD, SEM)	60.61 (6.08, 1.83)	67.03 (3.96, 0.84)	63.88 (7.58, 3.39)	62.84 (7.78, 2.94)
		Median (P25, P75)	61.89 (54.80, 65.83)	67.16 (64.04, 70.63)	61.28 (57.92, 69.41)	63.00 (59.16, 69.21)
		(Min, Max)	(49.04, 68.44)	(59.37, 72.79)	(56.69, 74.13)	(47.99, 71.45)
	Age-at-baseline (yrs)	Mean (SD, SEM)	62.1 (5.9, 1.8)	68.3 (4.0, 0.9)	64.8 (7.3, 3.2)	64.4 (6.6, 2.5)
		Median (P25, P75)	63.0 (59.0, 67.0)	68.0 (66.0, 72.0)	62.0 (59.0, 71.0)	66.0 (60.0, 69.0)
		(Min, Max)	(50.0, 69.0)	(62.0, 74.0)	(58.0, 74.0)	(52.0, 72.0)
	Time since AD diagnosis at baseline (yrs)	Mean (SD, SEM)	1.48 (1.34, 0.40)	1.28 (1.21, 0.26)	0.92 (0.67, 0.30)	1.59 (1.89, 0.72)
		Median (P25, P75)	0.96 (0.56, 2.40)	1.45 (0.21, 2.37)	1.08 (0.72, 1.31)	0.84 (-0.21, 3.55)
		(Min, Max)	(0.20, 4.37)	(-1.04, 3.61)	(-0.13, 1.59)	(-0.63, 4.01)
Neuroimaging	Hippocampal vol., % of ICV	Mean (SD, SEM)	0.26 (0.05, 0.01)	0.24 (0.03, 0.01)	0.28 (0.02, 0.01)	0.28 (0.03, 0.01)
		Median (P25, P75)	0.27 (0.24, 0.29)	0.24 (0.21, 0.25)	0.29 (0.27, 0.30)	0.28 (0.27, 0.30)
		(Min, Max)	(0.17, 0.33)	(0.19, 0.34)	(0.25, 0.31)	(0.22, 0.32)
	Ventricular vol., % of ICV	Mean (SD, SEM)	2.91 (1.54, 0.46)	2.79 (1.23, 0.26)	2.30 (0.97, 0.44)	2.91 (1.15, 0.44)
		Median (P25, P75)	2.65 (1.86, 3.86)	2.59 (1.94, 3.61)	2.12 (1.75, 3.26)	2.87 (1.93, 3.49)
		(Min, Max)	(1.12, 6.20)	(1.02, 5.02)	(1.07, 3.31)	(1.92, 5.11)
CSF markers	Aβ ₄₀ , pg/mL	Mean (SD, SEM)	16.32 (3.20, 0.96)	18.06 (4.65, 0.99)	19.91 (4.68, 2.09)	18.67 (4.11, 1.55)

Variable	<i>APOE4 & BCHE-K</i> (N = 11)	<i>APOE4 & No-BCHE-K</i> (N = 22)	No- <i>APOE4 & BCHE-K</i> (N = 5)	No- <i>APOE4 & No-BCHE-K</i> (N = 7)	
$A\beta_{42}$, pg/mL	Median (P25, P75)	16.00 (14.65, 19.54)	16.90 (16.31, 19.12)	21.87 (19.44, 22.74)	18.50 (14.76, 21.79)
	(Min, Max)	(9.95, 20.99)	(10.73, 28.40)	(11.99, 23.52)	(13.18, 25.34)
	Mean (SD, SEM)	640.5 (138.6, 41.8)	675.7 (193.2, 41.2)	754.5 (194.7, 87.1)	831.2 (176.1, 66.6)
$A\beta_{42}$ to $A\beta_{40}$ ratio	Median (P25, P75)	642.3 (500.4, 804.8)	661.5 (563.9, 773.6)	669.3 (628.3, 867.7)	845.8 (647.7, 917.2)
	(Min, Max)	(428.5, 849.7)	(340.4, 1059.5)	(568.3, 1039.0)	(598.1, 1126.0)
	Mean (SD, SEM)	0.0406 (0.0077, 0.0023)	0.0369 (0.0066, 0.0014)	0.0387 (0.0079, 0.0036)	0.0453 (0.0071, 0.0027)
Total-tau	Median (P25, P75)	0.0438 (0.0341, 0.0463)	0.0365 (0.0331, 0.0423)	0.0370 (0.0344, 0.0461)	0.0489 (0.0405, 0.0496)
	(Min, Max)	(0.0259, 0.0504)	(0.0255, 0.0501)	(0.0287, 0.0475)	(0.0316, 0.0517)
	Mean (SD, SEM)	389.88 (98.91, 29.82)	398.74 (149.34, 31.84)	416.37 (139.51, 62.39)	400.36 (122.24, 46.20)
p-tau ₁₈₁ , pg/mL	Median (P25, P75)	371.30 (319.00, 464.70)	344.03 (309.40, 510.25)	449.70 (290.75, 524.05)	392.35 (326.75, 405.05)
	(Min, Max)	(221.05, 556.10)	(212.00, 811.75)	(251.75, 565.60)	(290.20, 659.30)
	Mean (SD, SEM)	40.39 (12.21, 3.68)	38.71 (14.83, 3.16)	42.52 (15.76, 7.05)	40.37 (13.46, 5.09)
NfL, pg/mL	Median (P25, P75)	38.56 (31.91, 48.31)	33.06 (28.28, 50.94)	46.53 (29.15, 56.05)	36.99 (30.87, 41.36)
	(Min, Max)	(19.71, 63.98)	(20.55, 81.28)	(23.03, 57.86)	(28.79, 69.12)
	Mean (SD, SEM)	1391.727 (498.369, 150.264)	1222.185 (394.703, 84.151)	1316.283 (159.506, 71.333)	1457.920 (366.323, 138.457)
Ng, pg/mL	Median (P25, P75)	1213.900 (1036.835, 1850.245)	1177.855 (868.289, 1488.770)	1296.260 (1245.680, 1391.300)	1440.645 (1042.665, 1709.570)
	(Min, Max)	(630.833, 2391.810)	(580.969, 2223.485)	(1111.210, 1536.965)	(999.923, 1992.835)
	Mean (SD, SEM)	567.892 (188.029, 56.693)	506.050 (257.391, 54.876)	540.495 (244.553, 109.367)	515.083 (247.274, 93.461)
	Median (P25, P75)	538.994 (422.006, 738.869)	471.601 (307.055, 562.083)	543.664 (362.283, 750.315)	440.584 (315.335, 642.066)
	(Min, Max)	(332.570, 905.365)	(194.618, 1306.915)	(237.776, 808.435)	(302.237, 1013.229)

Variable		<i>APOE4 & BCHE-K</i> (N = 11)	<i>APOE4 & No-BCHE-K</i> (N = 22)	<i>No-APOE4 & BCHE-K</i> (N = 5)	<i>No-APOE4 & No-BCHE-K</i> (N = 7)	
YKL-40, pg/mL	Mean (SD, SEM)	247158.4 (143270.3, 43197.6)	247263.5 (85011.5, 18124.5)	351304.4 (164534.1, 73581.9)	293494.2 (168456.1, 63670.4)	
	Median (P25, P75)	206109.0 (145792.5, 294798.5)	239475.3 (197204.5, 300613.0)	380182.0 (239378.0, 487142.5)	235319.5 (202933.5, 300130.5)	
	(Min, Max)	(98750.8, 598333.5)	(112021.5, 487722.0)	(131158.5, 518661.0)	(174219.0, 662666.5)	
Cognition	MMSE Total (0-30)	Mean (SD, SEM)	23.8 (2.5, 0.7)	23.5 (2.3, 0.5)	23.4 (2.4, 1.1)	23.9 (2.3, 0.9)
		Median (P25, P75)	25.0 (21.0, 26.0)	23.0 (22.0, 26.0)	22.0 (22.0, 26.0)	24.0 (21.0, 26.0)
		(Min, Max)	(20.0, 27.0)	(20.0, 27.0)	(21.0, 26.0)	(21.0, 26.0)
	MMSE Memory (0-6)	Mean (SD, SEM)	3.9 (1.0, 0.3)	4.1 (1.1, 0.2)	4.2 (1.3, 0.6)	4.9 (1.2, 0.5)
		Median (P25, P75)	4.0 (3.0, 4.0)	4.0 (3.0, 5.0)	4.0 (3.0, 5.0)	5.0 (4.0, 6.0)
		(Min, Max)	(2.0, 6.0)	(3.0, 6.0)	(3.0, 6.0)	(3.0, 6.0)
	MMSE Visual Construction (0-1)	Mean (SD, SEM)	0.7 (0.5, 0.1)	0.7 (0.5, 0.1)	0.8 (0.4, 0.2)	0.3 (0.5, 0.2)
		Median (P25, P75)	1.0 (0.0, 1.0)	1.0 (0.0, 1.0)	1.0 (1.0, 1.0)	0.0 (0.0, 1.0)
		(Min, Max)	(0.0, 1.0)	(0.0, 1.0)	(0.0, 1.0)	(0.0, 1.0)
	RBANS Total (40-160)	Mean (SD, SEM)	65.5 (10.5, 3.2)	67.5 (12.4, 2.6)	72.0 (13.4, 6.0)	66.0 (11.8, 4.5)
		Median (P25, P75)	64.0 (55.0, 77.0)	68.5 (57.0, 79.0)	77.0 (72.0, 80.0)	62.0 (61.0, 68.0)
		(Min, Max)	(51.0, 80.0)	(49.0, 88.0)	(49.0, 82.0)	(52.0, 90.0)
	RBANS Delayed Memory (40-154)	Mean (SD, SEM)	52.7 (13.7, 4.1)	47.8 (5.9, 1.2)	69.0 (26.2, 11.7)	64.3 (21.5, 8.1)
		Median (P25, P75)	48.0 (44.0, 64.0)	48.0 (44.0, 52.0)	56.0 (56.0, 91.0)	64.0 (48.0, 92.0)
		(Min, Max)	(40.0, 84.0)	(40.0, 60.0)	(40.0, 102.0)	(40.0, 94.0)
	RBANS Visuospatial/ Constructional (40-154)	Mean (SD, SEM)	90.4 (25.6, 7.7)	85.4 (19.8, 4.2)	79.4 (21.1, 9.4)	80.3 (23.9, 9.0)
		Median (P25, P75)	78.0	84.0	78.0	81.0

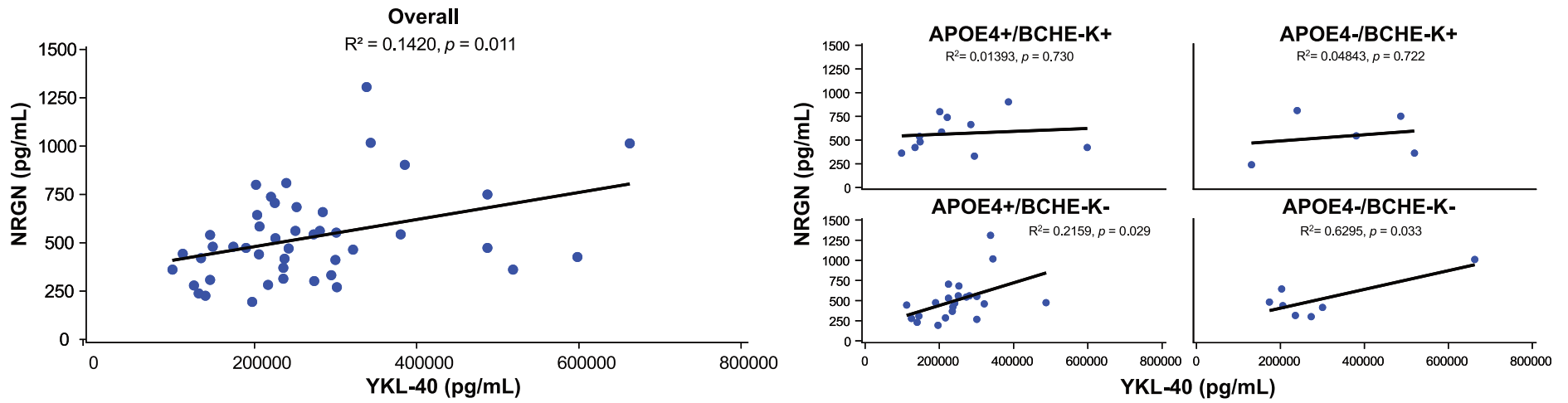
Onset of Alzheimer disease in apolipoprotein ε4 carriers is earlier in butyrylcholinesterase K variant carriers

Variable		<i>APOE4 & BCHE-K</i> (N = 11)	<i>APOE4 & No-BCHE-K</i> (N = 22)	<i>No-APOE4 & BCHE-K</i> (N = 5)	<i>No-APOE4 & No-BCHE-K</i> (N = 7)
	(Min, Max)	(64.0, 121.0)	(69.0, 105.0)	(62.0, 96.0)	(60.0, 102.0)
	(Min, Max)	(60.0, 126.0)	(50.0, 121.0)	(56.0, 105.0)	(50.0, 116.0)
RBANS Immediate Memory (40-154)	Mean (SD, SEM)	58.6 (12.3, 3.7)	69.5 (16.3, 3.5)	71.4 (23.8, 10.6)	64.0 (11.9, 4.5)
	Median (P25, P75)	57.0 (49.0, 69.0)	67.0 (57.0, 81.0)	73.0 (57.0, 87.0)	57.0 (53.0, 78.0)
	(Min, Max)	(40.0, 73.0)	(44.0, 103.0)	(40.0, 100.0)	(53.0, 81.0)
RBANS Language (40-154)	Mean (SD, SEM)	88.5 (10.6, 3.2)	88.1 (13.3, 2.8)	87.6 (6.0, 2.7)	84.0 (16.7, 6.3)
	Median (P25, P75)	90.0 (82.0, 94.0)	92.0 (83.0, 96.0)	85.0 (84.0, 90.0)	87.0 (64.0, 99.0)
	(Min, Max)	(71.0, 108.0)	(51.0, 104.0)	(82.0, 97.0)	(60.0, 104.0)
RBANS Attention (40-154)	Mean (SD, SEM)	72.6 (14.3, 4.3)	79.5 (16.6, 3.5)	78.4 (15.4, 6.9)	71.9 (8.1, 3.1)
	Median (P25, P75)	72.0 (68.0, 85.0)	79.0 (64.0, 91.0)	85.0 (75.0, 88.0)	72.0 (64.0, 75.0)
	(Min, Max)	(49.0, 100.0)	(53.0, 118.0)	(53.0, 91.0)	(60.0, 85.0)

ICV, intracranial volume; MMSE, Mini-Mental Status Examination; RBANS, Repeatable Battery for the Assessment of Neuropsychological Status; SD, standard deviation; SEM, standard error of the mean.

Onset of Alzheimer disease in apolipoprotein ε4 carriers is earlier in butyrylcholinesterase K variant carriers

Figure S1. Correlations in the overall population and in *APOE4* and *BCHE-K* subgroups of Ng versus YKL-40.



Onset of Alzheimer disease in apolipoprotein ε4 carriers is earlier in butyrylcholinesterase K variant carriers

Ethics committees approving clinical study

Principal Investigator	IRB/Ethic Committee	Reference number
Dr Albert Ludolph	Ethikkommission der Universität Ulm	412/16
Dr Siegfried Muhlack	Ethik-Kommission der Ruhr-Universität Bochum	16-5929
Dr Catherine Mummery	London-Central Research Ethics Committee Manchester HRA Centre	17/LO/0440
Dr Simon Ducharme	MUHC Neurosciences Research Ethics Board	2017-3206
Dr Juha Rinne	National Committee on Medical Research Ethics	73/06.00.01/2017
Dr Ralf Bodenschatz	Ethikkommission der Sächsischen Landesärztekammer	EK-AMG-MCB-155/16-1
Dr Peter Paul de Deyn	Central Committee on Research Involving Human Subjects	NL60032.000.16
Dr Anne Borjesson Hansen	Regionala etikprövningsnämnden i Stockholm Karolinska Institutet i Solna	2017/300-31
Dr Michael Jonsson	Regionala etikprövningsnämnden i Stockholm Karolinska Institutet i Solna	2017/300-31
Dr Daniel Blackburn	London-Central Research Ethics Committee Manchester HRA Centre	17/LO/0440
Dr Anja Schneider	Ethikkommission an der Medizinischen Fakultät der Rheinischen Friedrich-Wilhelms-Universität Bonn	035/18-AMG
Dr Phillipus Scheltens	Central Committee on Research Involving Human Subjects	NL60032.000.16