

Molecular insights of β -lactamics resistance in *Klebsiella pneumoniae* isolates with focus on multidrug resistance and virulence from colonization samples

Supplemented Material

Text S1: Identifiable sequences for each gene included in the study available on the CARD platform.

Gene *bla*SHV:

>gb|FJ668814|77-937|SHV-1 [Klebsiella pneumoniae]; >gb|AF148851|6-866|SHV-2 [Escherichia coli]; >gb|X98102|74-934|SHV-2A [Klebsiella pneumoniae]; >gb|KX092356.1|193-1053|SHV-3 [Klebsiella pneumoniae]; >gb|LT985229.1|36108-36968|SHV-4 [Escherichia coli]; >gb|X55640|112-972|SHV-5 [Klebsiella pneumoniae]; >gb|Y11069|1-780|SHV-6 [Klebsiella pneumoniae]; >gb|U20270|125-985|SHV-7 [Escherichia coli]; >gb|U92041|1-861|SHV-8 [Escherichia coli]; >gb|S82452|121-978|SHV-9 [Klebsiella pneumoniae]; >gb|X98101|74-934|SHV-11 [Klebsiella pneumoniae]; >gb|AJ920369|24-860|SHV-12 [Escherichia coli]; >gb|AF164577|1-861|SHV-13 [Klebsiella pneumoniae]; >gb|AF226622|55-915|SHV-14 [Klebsiella pneumoniae]; >gb|AJ011428|1-861|SHV-15 [Escherichia coli]; >gb|AF072684|118-993|SHV-16 [Klebsiella pneumoniae]; >gb|AF132290|88-948|SHV-18 [Klebsiella pneumoniae]; >gb|AF117743|1-780|SHV-19 [Klebsiella pneumoniae]; >gb|AF117744|1-780|SHV-20 [Klebsiella pneumoniae]; >gb|AF117745|1-780|SHV-21 [Klebsiella pneumoniae]; >gb|AF117746|1-780|SHV-22 [Klebsiella pneumoniae]; >gb|AF117747|1-780|SHV-23 [Klebsiella pneumoniae]; >gb|AB023477|1-861|SHV-24 [Escherichia coli]; >gb|AF208796|1-861|SHV-25 [Klebsiella pneumoniae]; >gb|AF227204|74-934|SHV-26 [Klebsiella pneumoniae]; >gb|AF293345|1-861|SHV-27 [Klebsiella pneumoniae]; >gb|AF299299|1-861|SHV-28 [Klebsiella pneumoniae]; >gb|AF301532|8-868|SHV-29 [Klebsiella pneumoniae]; >gb|AY661885|49-909|SHV-30 [Enterobacter cloacae]; >gb|AY277255|67-927|SHV-31 [Klebsiella pneumoniae]; >gb|AY037778|92-952|SHV-32 [Klebsiella pneumoniae]; >gb|JX268631|1-861|SHV-33 [Klebsiella pneumoniae]; >gb|AY036620|89-949|SHV-34 [Escherichia coli]; >gb|AY070258|1-861|SHV-35 [Klebsiella pneumoniae]; >gb|AF467947|1-861|SHV-36 [Klebsiella pneumoniae]; >gb|AF467948|1-861|SHV-37 [Klebsiella pneumoniae]; >gb|AY079099|149-1009|SHV-38 [Klebsiella pneumoniae]; >gb|AF535128|1-861|SHV-40 [Klebsiella pneumoniae]; >gb|AF535129|1-861|SHV-41 [Klebsiella pneumoniae]; >gb|AF535130|1-861|SHV-42 [Klebsiella pneumoniae]; >gb|AY065991|7-867|SHV-43 [Klebsiella pneumoniae]; >gb|AY259119|117-977|SHV-44 [Klebsiella pneumoniae]; >gb|AF547625|1-861|SHV-45 [Klebsiella pneumoniae]; >gb|AY210887|112-972|SHV-46 [Klebsiella oxytoca]; >gb|AY263404|1-861|SHV-48 [Klebsiella pneumoniae]; >gb|AY528718|414-1274|SHV-49 [Klebsiella pneumoniae]; >gb|AY288915|1-861|SHV-50 [Klebsiella pneumoniae]; >gb|AY289548|1-861|SHV-51 [Klebsiella pneumoniae]; >gb|HQ845196|1-861|SHV-52 [Klebsiella pneumoniae]; >gb|AY590467|1-729|SHV-53 [Klebsiella pneumoniae]; >gb|AJ863560|1-861|SHV-55 [Klebsiella pneumoniae]; >gb|EU586041|1-861|SHV-56 [Klebsiella pneumoniae]; >gb|AY223863|171-1031|SHV-57 [Escherichia coli]; >gb|AY790341|1-861|SHV-59 [Klebsiella pneumoniae]; >gb|AB302939|9-869|SHV-60 [Klebsiella pneumoniae]; >gb|AJ866284|1-861|SHV-61 [Klebsiella pneumoniae]; >gb|AJ866285|1-861|SHV-62 [Klebsiella pneumoniae]; >gb|EU342351|173-1033|SHV-63 [Klebsiella pneumoniae]; >gb|DQ174304|5-865|SHV-64 [Klebsiella pneumoniae]; >gb|DQ174305|5-865|SHV-65 [Klebsiella pneumoniae]; >gb|DQ174306|5-865|SHV-66 [Klebsiella pneumoniae]; >gb|DQ174307|5-865|SHV-67 [Klebsiella pneumoniae]; >gb|DQ174308|5-865|SHV-69 [Klebsiella pneumoniae]; >gb|DQ013287|1-861|SHV-70 [Enterobacter cloacae]; >gb|AM176546|1-861|SHV-71 [Klebsiella pneumoniae]; >gb|AM176547|31-891|SHV-72 [Klebsiella pneumoniae]; >gb|AM176548|17-874|SHV-73 [Klebsiella pneumoniae]; >gb|AM176549|31-891|SHV-74 [Klebsiella pneumoniae]; >gb|AM176550|31-891|SHV-75 [Klebsiella pneumoniae]; >gb|AM176551|31-891|SHV-76 [Klebsiella pneumoniae]; >gb|AM176552|31-891|SHV-77 [Klebsiella pneumoniae]; >gb|AM176553|31-891|SHV-78 [Klebsiella pneumoniae]; >gb|AM176554|31-891|SHV-79 [Klebsiella pneumoniae]; >gb|AM176555|1-861|SHV-80 [Klebsiella pneumoniae]; >gb|AM176556|26-886|SHV-81 [Klebsiella pneumoniae]; >gb|AM176557|1-861|SHV-82 [Klebsiella pneumoniae]; >gb|AM176558|1-861|SHV-83 [Klebsiella pneumoniae]; >gb|AM087453|26-856|SHV-84 [Escherichia coli]; >gb|DQ322460|16-876|SHV-85 [Klebsiella pneumoniae]; >gb|DQ328802|1-861|SHV-86 [Klebsiella pneumoniae]; >gb|DQ193536|1-861|SHV-89 [Klebsiella pneumoniae]; >gb|DQ836922|1-861|SHV-92 [Klebsiella pneumoniae]; >gb|EF373969|1-861|SHV-93 [Klebsiella pneumoniae]; >gb|EF373970|1-861|SHV-94 [Klebsiella pneumoniae]; >gb|EF373972|1-861|SHV-95 [Citrobacter freundii]; >gb|EF373971|1-861|SHV-96 [Acinetobacter baumannii]; >gb|EF373973|1-861|SHV-97 [Enterococcus faecalis]; >gb|EU155018|1-861|SHV-101 [Klebsiella pneumoniae]; >gb|EU024485|1-861|SHV-102 [Escherichia coli]; >gb|EU032604|1-861|SHV-103 [Klebsiella pneumoniae]; >gb|EU274581|1-861|SHV-104 [Klebsiella pneumoniae]; >gb|FJ194944|47-907|SHV-105 [Klebsiella pneumoniae]; >gb|AM941847|1-861|SHV-106 [Klebsiella pneumoniae]; >gb|AM941848|1-861|SHV-107 [Klebsiella pneumoniae];

>gb|HM751100|1-861|SHV-108 [Klebsiella pneumoniae]; >gb|EU418913|17-877|SHV-109 [Klebsiella pneumoniae]; >gb|HQ877615|1-861|SHV-110 [Klebsiella pneumoniae]; >gb|AB372881|9-869|SHV-111 [Klebsiella pneumoniae]; >gb|JF812965|1-861|SHV-120 [Escherichia coli]; >gb|HQ661362|72-932|SHV-121 [Klebsiella pneumoniae]; >gb|HM751103.1|1-864|SHV-122 [Klebsiella pneumoniae]; >gb|GQ390805|1-813|SHV-123 [Klebsiella pneumoniae]; >gb|GQ390806|1-813|SHV-124 [Klebsiella pneumoniae]; >gb|GQ390807|1-813|SHV-125 [Klebsiella pneumoniae]; >gb|GQ390808|1-813|SHV-126 [Escherichia coli]; >gb|GQ390809|1-813|SHV-127 [Klebsiella pneumoniae]; >gb|GU932590|1-861|SHV-128 [Enterobacter cloacae]; >gb|GU827715|1-861|SHV-129 [Escherichia coli]; >gb|AB551737|15-875|SHV-133 [Klebsiella pneumoniae]; >gb|HM559945|1-861|SHV-134 [Klebsiella pneumoniae]; >gb|HQ637576|1-861|SHV-135 [Escherichia coli]; >gb|HQ661363|72-932|SHV-137 [Klebsiella pneumoniae]; >gb|JN051143|1-861|SHV-140 [Klebsiella pneumoniae]; >gb|JQ388884|1-861|SHV-141 [Klebsiella pneumoniae]; >gb|JQ029959|29-889|SHV-142 [Klebsiella pneumoniae]; >gb|JX013655|1-861|SHV-145 [Klebsiella pneumoniae]; >gb|JX121114|1-858|SHV-147 [Klebsiella pneumoniae]; >gb|JX121115|1-858|SHV-148 [Klebsiella pneumoniae]; >gb|JX121116|1-858|SHV-149 [Klebsiella pneumoniae]; >gb|JX121117|1-858|SHV-150 [Klebsiella pneumoniae]; >gb|JX121118|1-858|SHV-151 [Klebsiella pneumoniae]; >gb|JX121119|1-858|SHV-152 [Klebsiella pneumoniae]; >gb|JX121120|1-858|SHV-153 [Klebsiella pneumoniae]; >gb|JX121121|1-858|SHV-154 [Klebsiella pneumoniae]; >gb|JX121122|1-858|SHV-155 [Klebsiella pneumoniae]; >gb|JX121123|1-861|SHV-156 [Klebsiella pneumoniae]; >gb|JX121124|1-861|SHV-157 [Klebsiella pneumoniae]; >gb|JX121125|1-858|SHV-158 [Klebsiella pneumoniae]; >gb|JX121126|1-858|SHV-159 [Klebsiella pneumoniae]; >gb|JX121127|1-861|SHV-160 [Klebsiella pneumoniae]; >gb|JX121128|1-861|SHV-161 [Klebsiella pneumoniae]; >gb|JX121129|1-858|SHV-162 [Klebsiella pneumoniae]; >gb|JX121130|1-858|SHV-163 [Klebsiella pneumoniae]; >gb|JX121131|1-858|SHV-165 [Klebsiella pneumoniae]; >gb|AB733453|4-849|SHV-167 [Klebsiella pneumoniae]; >gb|AM941844|1-861|SHV-98 [Klebsiella pneumoniae]; >gb|AM941845|1-861|SHV-99 [Klebsiella pneumoniae]; >gb|AM941846|1-900|SHV-100 [Klebsiella pneumoniae]; >gb|KJ776406|17-877|SHV-119 [Klebsiella pneumoniae]; >gb|JQ341060.1|882-1742|SHV-143 [Klebsiella pneumoniae]; >gb|JQ926986|1-861|SHV-144 [Klebsiella pneumoniae]; >gb|HE981194|1-861|SHV-164 [Klebsiella pneumoniae]; >gb|KP050487.1|1-861|SHV-180 [Klebsiella pneumoniae]; >gb|HG934764|1-864|SHV-183 [Enterobacter cloacae]; >gb|JX870080|1-861|SHV-168 [Klebsiella pneumoniae]; >gb|KF513177|1-861|SHV-172 [Klebsiella pneumoniae]; >gb|KF513178|1-861|SHV-173 [Klebsiella pneumoniae]; >gb|KF705209|1-861|SHV-178 [Klebsiella pneumoniae]; >gb|KF705208|1-861|SHV-179 [Klebsiella pneumoniae]; >gb|KP050489|1-861|SHV-182 [Klebsiella pneumoniae]; >gb|KM233164|1-861|SHV-185 [Klebsiella pneumoniae]; >gb|KM233165|1-861|SHV-186 [Klebsiella pneumoniae]; >gb|LN515533|1-867|SHV-187 [Klebsiella pneumoniae]; >gb|LN515534|1-873|SHV-188 [Klebsiella pneumoniae]; >gb|KP050494|1-861|SHV-189 [Klebsiella pneumoniae].

Gene *bla*TEM:

>gb|AL513383|161911-162771|TEM-1 [Salmonella enterica subsp. enterica serovar Typhi str. CT18]; >gb|X54606|215-1075|TEM-2 [Pseudomonas aeruginosa]; >gb|X64523.1|477-1337|TEM-3 [Klebsiella pneumoniae]; >gb|LK391770.1|19708-20568|TEM-4 [Klebsiella pneumoniae]; >gb|X57972|340-1200|TEM-6 [Escherichia coli]; >gb|AF527798.1|1-785|TEM-7 [Escherichia coli]; >gb|X65252|176-1036|TEM-8 [Klebsiella pneumoniae]; >gb|AF093512|198-1058|TEM-10 [Morganella morganii]; >gb|AY874537|178-1038|TEM-11 [Proteus mirabilis]; >gb|M88143|368-1228|TEM-12 [Klebsiella oxytoca]; >gb|AM849805|263-1123|TEM-15 [Haemophilus parainfluenzae]; >gb|X65254|176-1036|TEM-16 [Klebsiella pneumoniae]; >gb|Y14574|1-861|TEM-17 [Capnocytophaga ochracea]; >gb|JX042489|142-1002|TEM-19 [Acinetobacter baumannii]; >gb|Y17581|79-936|TEM-20 [Klebsiella pneumoniae]; >gb|Y17582|1-858|TEM-21 [Klebsiella pneumoniae]; >gb|Y17583|214-1071|TEM-22 [Klebsiella pneumoniae]; >gb|X65253|176-1036|TEM-24 [Klebsiella pneumoniae]; >gb|NG_050256.1|101-961|TEM-26 [Enterobacteriaceae]; >gb|U37195|76-936|TEM-28 [Escherichia coli]; >gb|Y17584|1-858|TEM-29 [Escherichia coli]; >gb|AJ437107|209-1069|TEM-30 [Escherichia coli]; >gb|GU371926|50305-51165|TEM-33 [Escherichia coli]; >gb|KC292503|4335-5195|TEM-34 [Haemophilus parainfluenzae]; >gb|FR717535|1-861|TEM-40 [Escherichia coli]; >gb|X98047|1-844|TEM-42 [Pseudomonas aeruginosa]; >gb|U95363|1-861|TEM-43 [Klebsiella pneumoniae]; >gb|X95401|209-1069|TEM-45 [Escherichia coli]; >gb|Y10279|1-861|TEM-47 [Klebsiella pneumoniae]; >gb|Y10280|1-861|TEM-48 [Klebsiella pneumoniae]; >gb|Y10281|1-861|TEM-49 [Escherichia coli]; >gb|Y13612|1-861|TEM-52 [Klebsiella pneumoniae]; >gb|AF104441|194-1054|TEM-53 [Klebsiella pneumoniae]; >gb|AF104442|194-1054|TEM-54 [Escherichia coli]; >gb|DQ286729|1-861|TEM-55 [Escherichia coli]; >gb|FJ405211|1-861|TEM-57 [Escherichia coli]; >gb|AF062386|31-862|TEM-59 [Klebsiella oxytoca]; >gb|AF047171|136-996|TEM-60 [Providencia stuartii]; >gb|AF332513|104-964|TEM-63 [Escherichia coli]; >gb|AF091113|451-1311|TEM-67 [Proteus mirabilis]; >gb|AJ239002|1-861|TEM-68 [Klebsiella pneumoniae]; >gb|AF188199|215-1075|TEM-70 [Escherichia coli]; >gb|AF203816|211-1071|TEM-71 [Klebsiella pneumoniae]; >gb|AF157553|148-1008|TEM-72 [Morganella morganii]; >gb|AJ012256|209-1069|TEM-73 [Proteus mirabilis]; >gb|AY130284|1-785|TEM-75 [Klebsiella

pneumoniae]; >gb|AF190694|209-1069|TEM-76 [Escherichia coli]; >gb|AF190693|209-1069|TEM-78 [Escherichia coli]; >gb|AF190692|209-1069|TEM-79 [Escherichia coli]; >gb|AF347054|209-1069|TEM-80 [Enterobacter cloacae]; >gb|AF427127|209-1069|TEM-81 [Escherichia coli]; >gb|AF427128|209-1069|TEM-82 [Escherichia coli]; >gb|AF427129|209-1069|TEM-83 [Escherichia coli]; >gb|AF427130|209-1069|TEM-84 [Escherichia coli]; >gb|AJ277414|1-861|TEM-85 [Klebsiella pneumoniae]; >gb|AJ277415|1-861|TEM-86 [Klebsiella pneumoniae]; >gb|AF250872|1-861|TEM-87 [Proteus mirabilis]; >gb|AY027590|113-973|TEM-88 [Klebsiella pneumoniae]; >gb|AY039040|189-1022|TEM-89 [Proteus mirabilis]; >gb|AF351241|90-950|TEM-90 [Escherichia coli]; >gb|AB049569|1-861|TEM-91 [Escherichia coli]; >gb|AF143804|1-861|TEM-92 [Proteus mirabilis]; >gb|AJ318093|1-861|TEM-93 [Escherichia coli]; >gb|AJ318094|1-861|TEM-94 [Escherichia coli]; >gb|AJ308558|182-1042|TEM-95 [Escherichia coli]; >gb|AY092401|1-861|TEM-96 [Escherichia coli]; >gb|AF495873|1-861|TEM-101 [Escherichia coli]; >gb|AY040093|69-929|TEM-102 [Plasmid pWW100]; >gb|AF516719|215-1075|TEM-104 [Klebsiella pneumoniae]; >gb|AF516720|215-1075|TEM-105 [Escherichia coli]; >gb|AY101578|215-1075|TEM-106 [Escherichia coli]; >gb|AY101764|207-1067|TEM-107 [Klebsiella pneumoniae]; >gb|AF506748|39-899|TEM-108 [Salmonella enterica subsp. enterica serovar Typhimurium]; >gb|AY628175|211-1071|TEM-109 [Escherichia coli]; >gb|AY072920|1-861|TEM-110 [Klebsiella pneumoniae]; >gb|AF468003|1-861|TEM-111 [Escherichia coli]; >gb|AY589493|167-1027|TEM-112 [Escherichia coli]; >gb|AY589494|194-1054|TEM-113 [Proteus mirabilis]; >gb|AY589495|182-1042|TEM-114 [Klebsiella aerogenes]; >gb|AF535127|209-1069|TEM-115 [Klebsiella pneumoniae]; >gb|U36911.1|1430-2290|TEM-116 [Staphylococcus aureus]; >gb|AY130282|1-764|TEM-117 [Escherichia coli]; >gb|AY130285|1-785|TEM-118 [Klebsiella oxytoca]; >gb|AY243512|209-1069|TEM-120 [Klebsiella oxytoca]; >gb|AY271267|1-861|TEM-121 [Escherichia coli]; >gb|AY307100|1-861|TEM-122 [Escherichia coli]; >gb|AY327539|1-858|TEM-123 [Proteus mirabilis]; >gb|AY327540|1-858|TEM-124 [Morganella morganii]; >gb|AY628176|76-936|TEM-125 [Escherichia coli]; >gb|AY628199|204-1064|TEM-126 [Escherichia coli]; >gb|AY368236|1-861|TEM-127 [Escherichia coli]; >gb|AY368237|1-861|TEM-128 [Escherichia coli]; >gb|AJ746225|1-861|TEM-129 [Klebsiella oxytoca]; >gb|AJ866988|1-861|TEM-130 [Klebsiella pneumoniae]; >gb|AY436361|132-992|TEM-131 [Salmonella enterica subsp. enterica serovar Typhimurium]; >gb|AY491682|1-861|TEM-132 [Klebsiella pneumoniae]; >gb|AY528425|1-861|TEM-133 [Klebsiella pneumoniae]; >gb|AY574271|1-861|TEM-134 [Citrobacter koseri]; >gb|AJ634602.1|7840-8700|TEM-135 [Salmonella enterica subsp. enterica serovar Typhimurium]; >gb|AY826417|1-861|TEM-136 [Klebsiella pneumoniae]; >gb|AM286274|1-861|TEM-137 [Shigella sonnei]; >gb|AY853593|215-1075|TEM-138 [Salmonella enterica]; >gb|DQ072853|1-861|TEM-139 [Klebsiella pneumoniae]; >gb|AY956335|39-899|TEM-141 [Enterobacter cloacae]; >gb|DQ388882|1-861|TEM-142 [Escherichia coli]; >gb|DQ075245|218-1078|TEM-143 [Escherichia coli]; >gb|AM049399|1-861|TEM-144 [Salmonella enterica subsp. enterica serovar Derby]; >gb|DQ105528|1-861|TEM-145 [Escherichia coli]; >gb|DQ105529|1-861|TEM-146 [Escherichia coli]; >gb|DQ279850|1-861|TEM-147 [Pseudomonas aeruginosa]; >gb|AM087454|209-1069|TEM-148 [Escherichia coli]; >gb|DQ369751|1-861|TEM-149 [Klebsiella aerogenes]; >gb|AM183304|209-1069|TEM-150 [Escherichia coli]; >gb|DQ834729|206-1066|TEM-151 [Escherichia coli]; >gb|DQ834728|206-1066|TEM-152 [Escherichia coli]; >gb|FJ807656|1-861|TEM-154 [Escherichia coli]; >gb|DQ679961|115-975|TEM-155 [Proteus mirabilis]; >gb|AM941159|209-1069|TEM-156 [Proteus mirabilis]; >gb|DQ909059|1-861|TEM-157 [Enterobacter cloacae]; >gb|EF534736|214-1074|TEM-158 [Escherichia coli]; >gb|EF136376|1-861|TEM-159 [Proteus mirabilis]; >gb|EF136377|1-861|TEM-160 [Proteus mirabilis]; >gb|EF468463|67-927|TEM-162 [Acinetobacter haemolyticus]; >gb|EU815939|1-861|TEM-163 [Escherichia coli]; >gb|EU274580|215-1075|TEM-164 [Klebsiella pneumoniae]; >gb|FJ197316|1-861|TEM-166 [Escherichia coli]; >gb|FJ360884|214-1074|TEM-167 [Escherichia coli]; >gb|FJ919776|209-1069|TEM-168 [Escherichia coli]; >gb|FJ873740|1-858|TEM-169 [Salmonella enterica subsp. enterica serovar Infantis]; >gb|GQ149347|5270-6130|TEM-171 [Escherichia coli]; >gb|GU550123|145-1005|TEM-176 [Escherichia coli]; >gb|FN652295|1-861|TEM-177 [Proteus mirabilis]; >gb|X97254|154-1011|TEM-178 [Serratia marcescens]; >gb|NG_050218.1|1-1061|TEM-181 [Bacteria]; >gb|HQ529916|111-971|TEM-183 [Klebsiella pneumoniae]; >gb|JN227084|309-1169|TEM-186 [Escherichia coli]; >gb|HM246246|212-1069|TEM-187 [Proteus mirabilis]; >gb|JN211012|214-1074|TEM-188 [Salmonella enterica]; >gb|JN254627|1-861|TEM-189 [Escherichia coli]; >gb|JN416112|1-861|TEM-190 [Escherichia coli]; >gb|KY432484.1|1-861|TEM-191 [Acinetobacter baumannii]; >gb|JF949915|1-754|TEM-192 [Klebsiella pneumoniae]; >gb|JN935135|1-861|TEM-193 [Acinetobacter baumannii]; >gb|JN935136|1-861|TEM-194 [Acinetobacter baumannii]; >gb|JN935137|1-861|TEM-195 [Acinetobacter baumannii]; >gb|HQ877606|1-861|TEM-197 [Klebsiella pneumoniae]; >gb|AB700703|162-1022|TEM-198 [Klebsiella pneumoniae]; >gb|JX050178|1-853|TEM-199 [Proteus mirabilis]; >gb|KC149518|1-861|TEM-153 [Escherichia coli]; >gb|HQ317449|1-861|TEM-182 [Haemophilus parainfluenzae]; >gb|JF795538|1-861|TEM-185 [Escherichia coli]; >gb|FR848831|1-861|TEM-184 [Escherichia coli]; >gb|JQ034306|1-861|TEM-196 [Shigella sonnei]; >gb|JX310327|1-861|TEM-201 [Escherichia coli]; >gb|KC900516|1-858|TEM-205 [Pseudomonas aeruginosa]; >gb|KC783461|1-861|TEM-206 [Escherichia coli]; >gb|KC818234|1-861|TEM-207 [Escherichia coli]; >gb|KC865667|184-1044|TEM-208 [Escherichia coli]; >gb|KF240808|1-861|TEM-209 [Klebsiella pneumoniae]; >gb|KF513179|1-861|TEM-211 [Proteus mirabilis];

>gb|KF663615|1-858|TEM-213 [*Pseudomonas aeruginosa*]; >gb|KP050491|1-861|TEM-214 [*Escherichia coli*]; >gb|KP050492|1-861|TEM-215 [*Escherichia coli*]; >gb|KF944358|1-861|TEM-216 [*Escherichia coli*]; >gb|HG934763|1-861|TEM-217 [*Enterobacter cloacae*]; >gb|KM114268|1-861|TEM-219 [*Escherichia coli*]; >gb|KM998962.1|1-861|TEM-220 [*Neisseria gonorrhoeae*].

Gene *bla*NDM:

>gb|FN396876|2407-3219|NDM-1 [*Klebsiella pneumoniae*]; >gb|JF703135|1-813|NDM-2 [*Acinetobacter baumannii*]; >gb|JN104597|115-927|NDM-5 [*Escherichia coli*]; >gb|JQ734687|1-813|NDM-3 [*Escherichia coli*]; >gb|JQ348841|1-813|NDM-4 [*Escherichia coli*]; >gb|JN967644|1-813|NDM-6 [*Escherichia coli*]; >gb|JX262694|1-813|NDM-7 [*Escherichia coli*]; >gb|AB744718|1-813|NDM-8 [*Escherichia coli*]; >gb|KC999080|380-1192|NDM-9 [*Klebsiella pneumoniae* subsp. *pneumoniae*]; >gb|KF361506|1-813|NDM-10 [*Klebsiella pneumoniae* subsp. *pneumoniae*]; >gb|KP265939.1|1-813|NDM-11 [*Escherichia coli*]; >gb|AB926431|511-1323|NDM-12 [*Escherichia coli*]; >gb|LC012596|3586-4398|NDM-13 [*Escherichia coli*]; >gb|KM210086.1|9068-9880|NDM-14 [*Acinetobacter lwoffii*]; >gb|KP735848.1|1-813|NDM-15 [*Escherichia coli*]; >gb|KP862821.1|1-813|NDM-16 [*Klebsiella pneumoniae*]; >gb|KX812714|1-813|NDM-17 [*Escherichia coli*]; >gb|KY503030.1|1-828|NDM-18 [*Escherichia coli*]; >gb|MF370080.1|1-813|NDM-19 [*Escherichia coli*]; >gb|KY654092.1|1-813|NDM-20 [*Escherichia coli*]; >gb|MG183694.1|1-813|NDM-21 [*Escherichia coli*]; >gb|MH243357.1|1-813|NDM-22 [*Enterobacter cloacae*]; >gb|MH450214.1|1-813|NDM-23 [*Klebsiella pneumoniae*]; >gb|MH450215.1|1-813|NDM-24 [*Providencia stuartii*]; >gb|MH986670.1|1-813|NDM-25 [*Klebsiella pneumoniae*]; >gb|MK105832.1|1-813|NDM-27 [*Escherichia coli*]; >gb|MK425035.1|1-813|NDM-28 [*Klebsiella pneumoniae*].

Gene *bla*KPC:

>gb|AY034847|6-887|KPC-1 [*Klebsiella pneumoniae*]; >gb|AF395881|1-882|KPC-3 [*Klebsiella pneumoniae*]; >gb|EU447304.1|15-896|KPC-4 [*Klebsiella pneumoniae*]; >gb|EU400222|2160-3041|KPC-5 [*Pseudomonas aeruginosa*]; >gb|EU555534|1-882|KPC-6 [*Klebsiella pneumoniae*]; >gb|EU729727|1-882|KPC-7 [*Klebsiella pneumoniae*]; >gb|FJ234412|1-882|KPC-8 [*Klebsiella pneumoniae*]; >gb|FJ624872|1-854|KPC-9 [*Escherichia coli*]; >gb|GQ140348|1-882|KPC-10 [*Acinetobacter baumannii*]; >gb|HM066995|1-882|KPC-11 [*Klebsiella pneumoniae*]; >gb|HQ641421|1-882|KPC-12 [*Klebsiella pneumoniae*]; >gb|HQ342889|1-882|KPC-13 [*Enterobacter cloacae*]; >gb|JX524191|396-1271|KPC-14 [*Klebsiella pneumoniae*]; >gb|KC433553|1-882|KPC-15 [*Klebsiella pneumoniae*]; >gb|KC465199|1-882|KPC-16 [*Klebsiella pneumoniae*]; >gb|KC465200|1-882|KPC-17 [*Klebsiella pneumoniae*]; >gb|KJ775801|1-882|KPC-19 [*Klebsiella pneumoniae* subsp. *pneumoniae*]; >gb|KM379100|1-882|KPC-22 [*Klebsiella pneumoniae*]; >gb|KR052099.1|5212-6093|KPC-24 [*Klebsiella pneumoniae*].

Gene *bla*GES:

>gb|AF156486|1332-2195|GES-1 [*Klebsiella pneumoniae*]; >gb|AF326355|1-864|GES-2 [*Pseudomonas aeruginosa*]; >gb|AB113580|1330-2193|GES-3 [*Klebsiella pneumoniae*]; >gb|AB116260|1330-2193|GES-4 [*Klebsiella pneumoniae*]; >gb|AY494717|1-864|GES-5 [*Escherichia coli*]; >gb|AY494718|1-864|GES-6 [*Klebsiella pneumoniae*]; >gb|AY260546|4478-5341|GES-7 [*Escherichia coli*]; >gb|AF329699|373-1236|GES-8 [*Pseudomonas aeruginosa*]; >gb|AY920928|2690-3553|GES-9 [*Pseudomonas aeruginosa*]; >gb|FJ820124|1124-1987|GES-10 [uncultured bacterium]; >gb|FJ854362|702-1565|GES-11 [*Acinetobacter baumannii*]; >gb|FN554543|1-864|GES-12 [*Acinetobacter baumannii*]; >gb|GU169702|609-1472|GES-13 [*Pseudomonas aeruginosa*]; >gb|GU207844|1-864|GES-14 [*Acinetobacter baumannii*]; >gb|GU208678|1-864|GES-15 [*Pseudomonas aeruginosa*]; >gb|HM173356|512-1375|GES-16 [*Serratia marcescens*]; >gb|HQ874631|1-864|GES-17 [*Escherichia coli*]; >gb|JQ028729|1-864|GES-18 [*Pseudomonas aeruginosa*]; >gb|JN596280|1919-2782|GES-19 [*Escherichia coli*]; >gb|JN596280|2848-3711|GES-20 [*Escherichia coli*]; >gb|JQ772478|141-1004|GES-21 [uncultured bacterium]; >gb|JX023441|38-901|GES-22 [*Acinetobacter baumannii*]; >gb|KF179354|1-861|GES-23 [*Pseudomonas aeruginosa*]; >gb|AB901141|1-864|GES-24 [*Acinetobacter baumannii*]; >gb|KP096411|1-864|GES-26 [*Pseudomonas aeruginosa*].

Gene *bla*CTX-M:

Subgroup CTX-M 1:

>gb|Y10278|1-876|CTX-M-3 [*Citrobacter freundii*]; >gb|AY044436|1436-2311|CTX-M-15 [*Escherichia coli*]; >gb|AY080894|4-879|CTX-M-22 [*Klebsiella pneumoniae*]; >gb|AY238472.1|13-888|CTX-M-33 [*Escherichia coli*]; >gb|DQ061159|347-1222|CTX-M-42 [*Escherichia coli*]; >gb|DQ303459|2175-3050|CTX-M-54 [*Klebsiella pneumoniae*]; >gb|DQ885477|1-876|CTX-M-55 [*Escherichia coli*]; >gb|EF576988|240-1115|CTX-M-66 [*Proteus mirabilis*]; >gb|FJ815436|196-1071|CTX-M-71 [*Klebsiella pneumoniae*]; >gb|AY847148|9-884|CTX-M-72 [*Klebsiella pneumoniae*]; >gb|DQ256091|99-974|CTX-M-82 [*Escherichia coli*]; >gb|NZ_SQNR01000043.1|1506-2381|CTX-M-88 [*Enterobacteriaceae*]; >gb|HQ398214|250-

1125|CTX-M-101 [Escherichia coli]; >gb|HG423149|40-915|CTX-M-103 [Escherichia coli]; >gb|GQ351346|1-876|CTX-M-114 [Providencia rettgeri]; >gb|JN227085|352-1227|CTX-M-117 [Escherichia coli]; >gb|KC107824|1-876|CTX-M-139 [Escherichia coli]; >gb|KF240809|1-876|CTX-M-142 [Escherichia coli]; >gb|KJ020573|275-1150|CTX-M-144 [Escherichia coli]; >gb|AJ704396|1-876|CTX-M-96 [Klebsiella pneumoniae]; >gb|EF219134|2126-3001|CTX-M-62 [Klebsiella pneumoniae]; >gb|KM211509|1-876|CTX-M-156 [Klebsiella pneumoniae]; >gb|KM211510|1-876|CTX-M-157 [Klebsiella pneumoniae]; >gb|KP681697.1|1-876|CTX-M-162 [Klebsiella oxytoca]; >gb|KP681698.1|1-876|CTX-M-163 [Escherichia coli]; >gb|KP727571.1|1-876|CTX-M-164 [Proteus mirabilis]; >gb|DQ223685|1-876|CTX-M-52 [Klebsiella pneumoniae]; >gb|EU202673|1-876|CTX-M-80 [Klebsiella pneumoniae]; >gb|KC351754|158-1033|CTX-M-136 [Proteus mirabilis]; >gb|KM211508|1-876|CTX-M-155 [Klebsiella pneumoniae]; >gb|JF966749|158-1033|CTX-M-116 [Proteus mirabilis]; >gb|AY005110|1-846|CTX-M-11 [Klebsiella pneumoniae]; >gb|AJ549244|1-876|CTX-M-28 [Escherichia coli]; >gb|JF274244.1|1-864|CTX-M-107 [Shigella sp. SH219]; >gb|JF274245|1-864|CTX-M-108 [Shigella sp. SH223]; >gb|JF274248.1|1-865|CTX-M-109 [Shigella sp. SH361]; >gb|EU402393|1-876|CTX-M-69 [Escherichia coli]; >gb|EF426798|1-876|CTX-M-79 [Escherichia coli]; >gb|AY267213|1-876|CTX-M-29 [Escherichia coli]; >gb|AY292654|1-876|CTX-M-30 [Citrobacter freundii]; >gb|AF305837|1-876|CTX-M-12 [Klebsiella pneumoniae]; >gb|AM411407|1-876|CTX-M-60 [Klebsiella pneumoniae].

Subgroup CTX-M 2:

>gb|X92506|1-876|CTX-M-1 [Escherichia coli]; >gb|AJ557142|1-876|CTX-M-32 [Escherichia coli]; >gb|AB177384|1-876|CTX-M-36 [Escherichia coli]; >gb|EF210159|1-876|CTX-M-58 [Escherichia coli]; >gb|EF219142|11-886|CTX-M-61 [Salmonella enterica subsp. enterica serovar Typhimurium]; >gb|KM211691|1-876|CTX-M-158 [Escherichia coli]; >gb|LN830266.1|1-876|CTX-M-166 [Escherichia coli]; >gb|AF488377|63-938|CTX-M-23 [Escherichia coli]; >gb|AY598759|1-876|CTX-M-10 [Klebsiella pneumoniae]; >gb|AY515297|1-876|CTX-M-34 [Escherichia coli]; >gb|DQ268764|5892-6767|CTX-M-53 [Salmonella enterica subsp. enterica serovar Westhampton]; >gb|AY649755|18-893|CTX-M-37 [Enterobacter cloacae]; >gb|EU177100|5-880|CTX-M-68 [Klebsiella sp. ARS06-441]; >gb|JN790864|239-1114|CTX-M-123 [Escherichia coli]; >gb|JX313020|1-876|CTX-M-132 [Escherichia coli]; >gb|AB284167|226-1101|CTX-M-64 [Shigella sonnei].

Subgroup CTX-M 3:

>gb|AF252622|1741-2616|CTX-M-14 [Escherichia coli]; >gb|AF325134|1-876|CTX-M-19 [Klebsiella pneumoniae]; >gb|AY143430|1-876|CTX-M-24 [Klebsiella pneumoniae]; >gb|AY156923|1-876|CTX-M-27 [Escherichia coli]; >gb|AY822595|23-898|CTX-M-38 [Klebsiella pneumoniae]; >gb|AY847143|83-958|CTX-M-47 [Escherichia coli]; >gb|AY847144|82-957|CTX-M-48 [Klebsiella pneumoniae]; >gb|AY847145|82-957|CTX-M-49 [Klebsiella pneumoniae]; >gb|AY847146|83-958|CTX-M-50 [Klebsiella pneumoniae]; >gb|EF418608|10-885|CTX-M-65 [Escherichia coli]; >gb|EF581888|1-876|CTX-M-67 [Escherichia coli]; >gb|FJ214366|1-876|CTX-M-83 [Salmonella enterica subsp. enterica serovar Derby]; >gb|FJ214367|1-876|CTX-M-84 [Salmonella enterica subsp. enterica serovar Derby]; >gb|FJ214369|1-876|CTX-M-86 [Salmonella enterica subsp. enterica serovar Agona]; >gb|HQ166709|1-876|CTX-M-93 [Escherichia coli]; >gb|HM755448|245-1120|CTX-M-98 [Escherichia coli]; >gb|HM803271|1-876|CTX-M-99 [Klebsiella pneumoniae]; >gb|HQ398215|245-1120|CTX-M-102 [Escherichia coli]; >gb|HQ833652|236-1111|CTX-M-104 [Escherichia coli]; >gb|HQ833651|245-1120|CTX-M-105 [Escherichia coli]; >gb|JF274243|1-876|CTX-M-111 [Shigella sp. SH202]; >gb|JF274246|1-876|CTX-M-112 [Shigella sp. SH257]; >gb|JF274247|1-876|CTX-M-113 [Shigella sp. SH284]; >gb|JN790862|245-1120|CTX-M-121 [Escherichia coli]; >gb|JN790863|233-1108|CTX-M-122 [Escherichia coli]; >gb|JQ724542|175-1050|CTX-M-125 [Enterobacter cloacae]; >gb|JX017364|239-1114|CTX-M-129 [Escherichia coli]; >gb|JX896165|1-876|CTX-M-134 [Escherichia coli]; >gb|KF513180|1-876|CTX-M-147 [Klebsiella pneumoniae]; >gb|KJ020574|245-1120|CTX-M-148 [Escherichia coli]; >gb|FJ214368|1-876|CTX-M-85 [Salmonella enterica subsp. enterica serovar Albany]; >gb|AB976602.1|136-1011|CTX-M-159 [Klebsiella pneumoniae]; >gb|EU545409|81-956|CTX-M-87 [Escherichia coli]; >gb|FJ907381|1-876|CTX-M-90 [Salmonella sp. YLD3]; >gb|AY847147|82-957|CTX-M-46 [Klebsiella pneumoniae]; >gb|AB703103|1-876|CTX-M-126 [Escherichia coli]; >gb|KP128034.1|1-876|CTX-M-161 [Escherichia coli]; >gb|HQ913565|1-870|CTX-M-106 [Escherichia coli]; >gb|AY033516|2836-3711|CTX-M-17 [Klebsiella pneumoniae]; >gb|JX017365|245-1120|CTX-M-130 [Escherichia coli]; >gb|JF274242|1-877|CTX-M-110 [Shigella sp. SH165]; >gb|AF252623|1-876|CTX-M-13 [Klebsiella pneumoniae]; >gb|EU136031|1-876|CTX-M-81 [Klebsiella pneumoniae]; >gb|AF174129|6336-7211|CTX-M-9 [Escherichia coli]; >gb|AY029068|1-876|CTX-M-16 [Escherichia coli]; >gb|DQ211987|1-876|CTX-M-51 [Escherichia coli]; >gb|AJ416346|557-1432|CTX-M-21 [Escherichia coli]; >gb|D89862|112-981|CTX-M-45 [Escherichia coli]; >gb|AB900900|1-876|CTX-M-137 [Escherichia coli].

Subgroup CTX-M 4:

>gb|AY157676|1-876|CTX-M-26 [Klebsiella pneumoniae]; >gb|AY954516|1-876|CTX-M-39 [Escherichia coli]; >gb|HM167760|1-876|CTX-M-94 [Escherichia coli]; >gb|FR682582|1-876|CTX-M-100 [Escherichia coli]; >gb|DQ023162|1-876|CTX-M-41 [Proteus mirabilis]; >gb|AF518567|2321-3196|CTX-M-25 [Escherichia coli]; >gb|FJ971899|31-906|CTX-M-89 [Proteus mirabilis]; >gb|KP050493.1|1-876|CTX-M-160 [Proteus mirabilis]; >gb|GQ870432|31-906|CTX-M-91 [Proteus mirabilis]; >gb|AM982522|1-876|CTX-M-78 [Kluyvera georgiana]; >gb|KJ461948|4-876|CTX-M-152 [Kluyvera sp. MRB7]; >gb|AY750914.2|207-1079|CTX-M-40 [Escherichia coli]; >gb|AB205197|4-876|CTX-M-63 [Klebsiella pneumoniae]; >gb|AF189721|274-1149|CTX-M-8 [Citrobacter amalonaticus].

Subgroup CTX-M 5:

>gb|DQ125241|1-876|CTX-M-2 [Escherichia coli]; >gb|AJ416344|304-1179|CTX-M-20 [Proteus mirabilis]; >gb|AJ567481|1-876|CTX-M-31 [Providencia sp. 4440]; >gb|AB176534|1-876|CTX-M-35 [Klebsiella oxytoca]; >gb|EF374097|1-876|CTX-M-56 [Escherichia coli]; >gb|DQ408762|1-876|CTX-M-59 [Klebsiella pneumoniae]; >gb|GU127598|1-876|CTX-M-92 [Escherichia coli]; >gb|JN969893.3|2531-3406|CTX-M-131 [Providencia rettgeri]; >gb|KC964871|1-876|CTX-M-141 [Klebsiella pneumoniae]; >gb|DQ102702|1-876|CTX-M-43 [Acinetobacter baumannii]; >gb|D37830|91-966|CTX-M-44 [Escherichia coli]; >gb|KP727572.1|1-876|CTX-M-165 [Klebsiella pneumoniae]; >gb|KJ911020|112-987|CTX-M-115 [Acinetobacter baumannii]; >gb|JQ429324|1-876|CTX-M-124 [Escherichia coli]; >gb|U95364|6-881|CTX-M-5 [Salmonella enterica subsp. enterica serovar Typhimurium]; >gb|AM982520|5549-6424|CTX-M-76 [Kluyvera ascorbata]; >gb|AM982521|1912-2787|CTX-M-77 [Kluyvera ascorbata]; >gb|FN813245|1912-2787|CTX-M-95 [Kluyvera ascorbata]; >gb|Y14156|1-876|CTX-M-4 [Salmonella enterica subsp. enterica serovar Typhimurium]; >gb|AJ005045|1-876|CTX-M-7 [Salmonella enterica subsp. enterica serovar Typhimurium]; >gb|AJ005044|1-876|CTX-M-6 [Salmonella enterica subsp. enterica serovar Typhimurium]; >gb|GQ149243|1-873|CTX-M-74 [Enterobacter cloacae]; >gb|GQ149244|1-873|CTX-M-75 [Providencia stuartii].

Gene blaOXA:

Subgroup OXA 23 like:

>gb|AY795964|1-822|OXA-23 [Acinetobacter baumannii]; >gb|AF201828.2|116-937|OXA-27 [Acinetobacter baumannii]; >gb|HM488986|1-822|OXA-165 [Acinetobacter baumannii]; >gb|HM488987|1-822|OXA-166 [Acinetobacter baumannii]; >gb|HM488988|1-822|OXA-167 [Acinetobacter baumannii]; >gb|HM488989|1-822|OXA-168 [Acinetobacter baumannii]; >gb|HM488990|1-822|OXA-169 [Acinetobacter baumannii]; >gb|HM488991|1-822|OXA-170 [Acinetobacter baumannii]; >gb|HM488992|1-822|OXA-171 [Acinetobacter baumannii]; >gb|JN638887|1-822|OXA-225 [Acinetobacter baumannii]; >gb|JQ837239|1-822|OXA-239 [Acinetobacter sp. enrichment culture clone 8407]; >gb|KP050485|1-822|OXA-366 [Acinetobacter baumannii]; >gb|KM087842|1-822|OXA-398 [Acinetobacter baumannii]; >gb|AY288523|1-825|OXA-49 [Acinetobacter baumannii]; >gb|EU571228|823-1644|OXA-133 [Acinetobacter radioresistens]; >gb|APQF0100001.1|291558-292379|OXA-103 [Acinetobacter radioresistens DSM 6976 = NBRC 102413 = CIP 103788]; >gb|FJ194494|172-996|OXA-146 [Acinetobacter baumannii]; >gb|AY762325|116-937|OXA-73 [Klebsiella pneumoniae]; >gb|KM433671|1-822|OXA-422 [Acinetobacter baumannii]; >gb|KM433672|1-822|OXA-423 [Acinetobacter baumannii]; >gb|KP144324|1-822|OXA-435 [Acinetobacter baumannii]; >gb|KP727574.1|1-822|OXA-440 [Acinetobacter baumannii]; >gb|KP264124.1|77-898|OXA-482 [Acinetobacter baumannii]; >gb|KP264125.1|84-905|OXA-483 [Acinetobacter baumannii].

Subgroup OXA 24/40 like:

>gb|AF509241|1-828|OXA-24 [Acinetobacter baumannii]; >gb|AF201826|22-849|OXA-25 [Acinetobacter baumannii]; >gb|AF201827|22-849|OXA-26 [Acinetobacter baumannii]; >gb|AM991978|1-828|OXA-139 [Acinetobacter baumannii]; >gb|JQ838185|1-828|OXA-207 [Acinetobacter pittii]; >gb|GU199038|1196-2023|OXA-160 [Acinetobacter baumannii]; >gb|GU199039.2|1206-2033|OXA-72 [Acinetobacter baumannii]; >gb|KP410856.1|1-828|OXA-437 [Acinetobacter baumannii].

Subgroup OXA 48 like:

>gb|KR401105.1|1-798|OXA-484 [Klebsiella pneumoniae]; >gb|JX423831|2677-3474|OXA-232 [Escherichia coli]; >gb|JN205800|4141-4938|OXA-181 [Klebsiella pneumoniae]; >gb|KP264119.1|1-798|OXA-416 [Shewanella xiamenensis]; >gb|KP410734.1|1-792|OXA-438 [Escherichia coli]; >gb|KP727573.1|1-786|OXA-439 [Escherichia coli]; >gb|HQ700343|1-786|OXA-163 [Enterobacter cloacae]; >gb|JX893517|1-786|OXA-247 [Klebsiella pneumoniae]; >gb|JQ809466|5375-6172|OXA-204 [Klebsiella pneumoniae]; >gb|CP022089.2|2724286-2725083|OXA-252 [Shewanella sp. FDAARGOS_354]; >gb|JN704570|4039-4836|OXA-199 [Shewanella xiamenensis]; >gb|JX438001|1-798|OXA-245 [Klebsiella pneumoniae]; >gb|AY236073|2188-2985|OXA-48 [Klebsiella pneumoniae]; >gb|HM015773|2127-

2924|OXA-162 [Klebsiella pneumoniae]; >gb|JX438000|1-798|OXA-244 [Klebsiella pneumoniae]; >gb|KF900153|1-798|OXA-370 [Enterobacter sp. 87F-2]; >NG_055490.1 Klebsiella pneumoniae 1210 pKp1210 blaOXA gene for OXA-48 family class D beta-lactamase OXA-519, complete CDS.

Subgroup OXA 51 like:

>gb|KF048915.1|1-825|OXA-342 [Acinetobacter baumannii]; >gb|HQ425493|1-822|OXA-195 [Acinetobacter nosocomialis]; >gb|EU670845|1595-2419|OXA-138 [Acinetobacter nosocomialis]; >gb|HQ425492|1-822|OXA-194 [Acinetobacter nosocomialis]; >gb|HQ425494|1-822|OXA-196 [Acinetobacter nosocomialis]; >gb|HQ425495|1-822|OXA-197 [Acinetobacter nosocomialis]; >gb|HM113561|1-825|OXA-175 [Acinetobacter baumannii]; >gb|HM113562|1-825|OXA-176 [Acinetobacter baumannii]; >gb|HM113563|1-825|OXA-177 [Acinetobacter baumannii]; >gb|EU019536|1-825|OXA-82 [Acinetobacter baumannii]; >gb|HQ734812|1-825|OXA-201 [Acinetobacter baumannii]; >gb|HM113564|1-825|OXA-178 [Acinetobacter baumannii]; >gb|EU029998|576-1400|OXA-115 [Acinetobacter baumannii]; >gb|EU019535|1-825|OXA-80 [Acinetobacter baumannii]; >gb|KF986256.1|41-865|OXA-375 [Acinetobacter baumannii]; >gb|DQ519089|9-833|OXA-95 [Acinetobacter baumannii]; >gb|NWUK01000007.1|12140-12964|OXA-343 [Acinetobacter baumannii]; >gb|HE963770|1-825|OXA-249 [Acinetobacter baumannii]; >gb|EF650034|1-825|OXA-108 [Acinetobacter baumannii]; >gb|EU255295.1|1-825|OXA-126 [Acinetobacter baumannii]; >gb|EU547445|1-825|OXA-130 [Acinetobacter baumannii]; >gb|AM231719|1-825|OXA-90 [Acinetobacter baumannii]; >gb|HQ734811|1-825|OXA-200 [Acinetobacter baumannii]; >gb|KF057032|1-825|OXA-315 [Acinetobacter baumannii]; >gb|KF057033|1-825|OXA-316 [Acinetobacter baumannii]; >gb|DQ519088|9-833|OXA-94 [Acinetobacter baumannii]; >gb|KF048918.1|1-825|OXA-345 [Acinetobacter baumannii]; >gb|DQ392963|9-833|OXA-88 [Acinetobacter baumannii]; >gb|AY750908|1-825|OXA-65 [Acinetobacter baumannii]; >gb|EU547446|1-825|OXA-131 [Acinetobacter baumannii]; >gb|KR872296.1|1-825|OXA-480 [Acinetobacter baumannii]; >gb|KM588353|1-825|OXA-425 [Acinetobacter baumannii]; >gb|APOR01000009.1|341737-342561|OXA-260 [Acinetobacter baumannii NIPH 1362]; >gb|AB781687|1-825|OXA-254 [Acinetobacter baumannii]; >gb|HQ734813|1-825|OXA-202 [Acinetobacter baumannii]; >gb|HM113558|1-825|OXA-172 [Acinetobacter baumannii]; >gb|HM113559|1-825|OXA-173 [Acinetobacter baumannii]; >gb|HM113560|1-825|OXA-174 [Acinetobacter baumannii]; >gb|EF650035|1-825|OXA-109 [Acinetobacter baumannii]; >gb|EU019534|1-825|OXA-79 [Acinetobacter baumannii]; >gb|DQ309277|1-825|OXA-83 [Acinetobacter baumannii]; >gb|DQ309276|1-825|OXA-84 [Acinetobacter baumannii]; >gb|AY949203|1-825|OXA-76 [Acinetobacter baumannii]; >gb|KF048907.1|1-825|OXA-336 [Acinetobacter baumannii]; >gb|NG_050607.1|101-925|OXA-234 [Acinetobacter baumannii]; >gb|AB634250|1-825|OXA-206 [Acinetobacter baumannii]; >gb|EU255296.1|1-825|OXA-127 [Acinetobacter baumannii]; >gb|EF016356.1|1-825|OXA-66 [Acinetobacter baumannii]; >gb|APQY01000006.1|416599-417423|OXA-263 [Acinetobacter baumannii NIPH 329]; >gb|KJ584914.1|1-825|OXA-414 [Acinetobacter baumannii]; >gb|KF057031|1-825|OXA-314 [Acinetobacter baumannii]; >gb|JX025021|1-825|OXA-241 [Acinetobacter baumannii]; >gb|KF057027|1-825|OXA-121 [Acinetobacter baumannii]; >gb|KF057029|1-825|OXA-312 [Acinetobacter baumannii]; >gb|KF057030|1-825|OXA-313 [Acinetobacter baumannii]; >gb|KF986255|17-841|OXA-374 [Acinetobacter baumannii]; >gb|AY750913|1-825|OXA-71 [Acinetobacter baumannii]; >gb|AM231720|1-825|OXA-100 [Acinetobacter baumannii]; >gb|PYSX01000023.1|160179-161003|OXA-337 [Acinetobacter baumannii]; >gb|KJ135342.1|49-873|OXA-390 [Acinetobacter baumannii]; >gb|KM979379.1|15-839|OXA-432 [Acinetobacter baumannii]; >gb|KJ135344|15-839|OXA-381 [Acinetobacter baumannii]; >gb|KJ135345|15-839|OXA-382 [Acinetobacter baumannii]; >gb|KF048911.1|1-825|OXA-339 [Acinetobacter baumannii]; >gb|NGCN01000023.1|65771-66595|OXA-340 [Acinetobacter baumannii]; >gb|EF650032|1-825|OXA-106 [Acinetobacter baumannii]; >gb|NG_049717.1|14-838|OXA-430 [Acinetobacter baumannii]; >gb|CU468230.2|1959578-1960402|OXA-75 [Acinetobacter baumannii SDF]; >gb|KF986263.1|91-915|OXA-384 [Acinetobacter baumannii]; >gb|KJ584917.1|1-825|OXA-408 [Acinetobacter baumannii]; >gb|JX025022|1-825|OXA-242 [Acinetobacter baumannii]; >gb|DQ445683|1-825|OXA-89 [Acinetobacter baumannii]; >gb|EU220744|1-786|OXA-116 [Acinetobacter baumannii]; >gb|GQ853680|1-825|OXA-149 [Acinetobacter baumannii]; >gb|KF057034|1-825|OXA-317 [Acinetobacter baumannii]; >gb|GQ853681|1-825|OXA-150 [Acinetobacter baumannii]; >gb|KP844571.1|1-825|OXA-442 [Acinetobacter baumannii]; >gb|KM588354|1-825|OXA-426 [Acinetobacter baumannii]; >gb|FJ872530|1-825|OXA-144 [Acinetobacter baumannii]; >gb|AY750910|1-825|OXA-68 [Acinetobacter baumannii]; >gb|EU375515|1-825|OXA-128 [Acinetobacter baumannii]; >gb|KF986254|35-859|OXA-386 [Acinetobacter baumannii]; >gb|GQ423625.1|1-825|OXA-117 [Acinetobacter baumannii]; >gb|JX865394.1|1-825|OXA-441 [Acinetobacter baumannii]; >gb|JN603240|1-825|OXA-217 [Acinetobacter baumannii]; >gb|AY862132|1-825|OXA-78 [Acinetobacter baumannii]; >gb|KM979378.1|15-839|OXA-431 [Acinetobacter baumannii]; >gb|DQ519086|1199-2023|OXA-91 [Acinetobacter baumannii]; >gb|AY949202|1-825|OXA-77 [Acinetobacter baumannii]; >gb|AM279652|1-825|OXA-98 [Acinetobacter baumannii]; >gb|KF986259.1|17-841|OXA-378 [Acinetobacter baumannii]; >gb|KJ135343|15-839|OXA-388 [Acinetobacter baumannii]; >gb|KF048913.1|1-825|OXA-341 [Acinetobacter baumannii]; >gb|KJ780078.1|1-825|OXA-400 [Acinetobacter baumannii];

>gb|KF986262.1|28-852|OXA-383 [Acinetobacter baumannii]; >gb|KJ584922.1|1-825|OXA-413 [Acinetobacter baumannii]; >gb|JN248564|1-825|OXA-223 [Acinetobacter baumannii]; >gb|KM979376.1|21-845|OXA-429 [Acinetobacter baumannii]; >gb|KM588352|1-825|OXA-424 [Acinetobacter baumannii]; >gb|DQ519087|39-863|OXA-93 [Acinetobacter baumannii]; >gb|KF986253|16-840|OXA-385 [Acinetobacter baumannii]; >gb|KJ780076.1|1-825|OXA-401 [Acinetobacter baumannii]; >gb|EF653400|435-1259|OXA-113 [Acinetobacter baumannii]; >gb|KF048909|1-825|OXA-338 [Acinetobacter baumannii]; >gb|HQ998857|1-825|OXA-203 [Acinetobacter baumannii]; >gb|KF048917.1|1-825|OXA-344 [Acinetobacter baumannii]; >gb|EF650037|1-825|OXA-111 [Acinetobacter baumannii]; >gb|KJ584916.1|1-825|OXA-407 [Acinetobacter baumannii]; >gb|HM570035|1-825|OXA-179 [Acinetobacter baumannii]; >gb|KF305666.1|1-825|OXA-259 [Acinetobacter baumannii]; >gb|HM570036|1-825|OXA-180 [Acinetobacter baumannii]; >gb|FR865168|1-825|OXA-216 [Acinetobacter baumannii]; >gb|AY750907|1-825|OXA-64 [Acinetobacter baumannii]; >gb|KF885217|1-825|OXA-365 [Acinetobacter baumannii]; >gb|KJ920338.1|1-825|OXA-404 [Acinetobacter baumannii]; >gb|APRA01000005.1|465154-465978|OXA-262 [Acinetobacter baumannii NIPH 67]; >gb|DQ888718|1-825|OXA-99 [Acinetobacter baumannii]; >gb|KJ584920.1|1-825|OXA-411 [Acinetobacter baumannii]; >gb|KF986257|21-845|OXA-376 [Acinetobacter baumannii]; >gb|KF986258|15-839|OXA-377 [Acinetobacter baumannii]; >gb|EU255291.1|1-825|OXA-122 [Acinetobacter baumannii]; >gb|JN215211|1-825|OXA-219 [Acinetobacter baumannii]; >gb|AJ309734|1-825|OXA-51 [Acinetobacter baumannii]; >gb|EU547447|1-825|OXA-132 [Acinetobacter baumannii]; >gb|KJ584918.1|1-828|OXA-409 [Acinetobacter baumannii]; >gb|KJ584915.1|1-825|OXA-406 [Acinetobacter baumannii]; >gb|KF986260|21-845|OXA-379 [Acinetobacter baumannii]; >gb|EU255292.1|1-825|OXA-123 [Acinetobacter baumannii]; >gb|KJ584921.1|1-825|OXA-412 [Acinetobacter baumannii]; >gb|KJ427797|1-825|OXA-391 [Acinetobacter baumannii]; >gb|GQ853679|1-825|OXA-148 [Acinetobacter baumannii]; >gb|AY750912|1-825|OXA-70 [Acinetobacter baumannii]; >gb|EU255294.1|1-825|OXA-125 [Acinetobacter baumannii]; >gb|KJ780077.1|1-825|OXA-402 [Acinetobacter baumannii]; >gb|KF048919.1|1-825|OXA-346 [Acinetobacter baumannii]; >gb|HE963771|1-825|OXA-250 [Acinetobacter baumannii]; >gb|HE963769|1-825|OXA-248 [Acinetobacter baumannii]; >gb|EF650038|1-825|OXA-112 [Acinetobacter baumannii]; >gb|EF650036|1-825|OXA-110 [Acinetobacter baumannii]; >gb|EF650033|1-825|OXA-107 [Acinetobacter baumannii A424]; >gb|DQ335566|1-825|OXA-92 [Acinetobacter baumannii]; >gb|KJ920337.1|1-825|OXA-403 [Acinetobacter baumannii]; >gb|AB871653|11871-12695|OXA-371 [Acinetobacter baumannii]; >gb|CU459141.1|2175317-2176141|OXA-69 [Acinetobacter baumannii AYE]; >gb|APQV01000009.1|266253-267077|OXA-261 [Acinetobacter baumannii NIPH 201]; >gb|KM979380.1|26-850|OXA-433 [Acinetobacter baumannii]; >gb|EU255293.1|1-825|OXA-124 [Acinetobacter baumannii]; >gb|FR853176|1-825|OXA-208 [Acinetobacter baumannii]; >gb|DQ491200|1-825|OXA-67 [Acinetobacter baumannii]; >gb|DQ149247|1-825|OXA-86 [Acinetobacter baumannii]; >gb|DQ348075|1-825|OXA-87 [Acinetobacter baumannii]; >gb|KF986261|45-869|OXA-380 [Acinetobacter baumannii]; >gb|HE963768|1-825|OXA-120 [Acinetobacter baumannii].

Text S2: Consensus sequences obtained for the gene groups analyzed.

Gene *blaSHV* consensus:

```

-----NNNNNNNNTNTTCGCCNGNNTATTATCTCCCTGTTAGCCACCCTGCCGCTGGCGGTA
CACGCCAGCCCGCAGCCGCTTGAGCAAATTAACNAAGCGAAAGCCAGC-----
--TGTCGGGCNGCGTAGGCATGATAGAAATGGATCTGGCCAGCGGCCGCACGCT
GACCGCCTGGCGCGCCGATGAACGCTTTCCCATGATGAGCACCTTTAAAGTAGTGCTCTGCGGCGCA
GTGCTGGCGCGGGTGGATGCCGGTGACGAA-----NNNNNNNNTNTTCGCCNGN
NTATTATCTCCCTGTTAGCCACCCTGCCGCTGGCGGTACACGCCAGCCCGCAGCCGCTTGAGCAAAT
TAAACNAAGCGAAAGCCAGC-----TGTCGGGCNGCGTA
GGCATGATAGAAATGGATCTGGCCAGCGCCGCACGCTGACCGCCTGGCGCGCCGATGAACGCTTT
CCCATGATGAGCACCTTTAAAGTAGTGCTCTGCGGCGCAGTGCTGGCGCGGGTGGATGCCGGTGAC
GAA-----NNNNNNNNTNTTCGCCNGNNTATTATCTCCCTGTTAGCCAC
CCTGCCGCTGGCGGTACACGCCAGCCCGCAGCCGCTTGAGCAAATTAACNAAGCGAAAGCCAGC---
-----TGTCGGGCNGCGTAGGCATGATAGAAATGGATCTG
GCCAGCGCCGCACGCTGACCGCTGGCGCGCCGATGAACGCTTTCCCATGATGAGCACCTTTAAA
GTAGTGCTCTGCGGCGCAGTGCTGGCGCGGGTGGATGCCGGTGACGAA-----N
NNNNNNNNTNTTCGCCNGNNTATTATCTCCCTGTTAGCCACCCTGCCGCTGGCGGTACACGCCAGCCC
GCAGCCGCTTGAGCAAATTAACNAAGCGAAAGCCAGC-----
TGTCGGGCNGCGTAGGCATGATAGAAATGGATCTGGCCAGCGGCCGCACGCTGACC
GCCTGGCGCGCCGATGAACGCTTTCCCATGATGAGCACCTTTAAAGTAGTGCTCTGCGGCGCAGTG
TGCGCGGGTGGATGCCGGTGACGAA

```


Gene *blaTEM* consensus:

ATGAGTATTNAACATTTNCGTGTGCGCCCTTATTCCCTTTTTGCGGCATTTTGCNTTCCTGTTTTGCTC
ACCCAGAAACGCTGGTAAAAGTAAAAGATGCTGAAGATNAGTTGGGTGCACGAGTGGGTTACATCGA
NCTGGATCTCAACAGCGGTAAGATCCTTGAGAGTTTTCGCCCCGAAGAACGTTTTCCAATGNTGAGCA
CTTTTAAAGTTCTGCTATGTGGNGCGGTATTATCCCGTGTGACGCGGGCAAGAGCAACTCGGTGCG
CCGCATACACTATTCTCAGAATGACTTG

Gene *blaNDM* consensus:

ATGGAATTGCCAATATTATGCACCCGGTGCGAAGCTGAGCACCGCATTAGCCGCTGCATTGATGC
TGAGCGGGTGCATGCCCGGTGAAATCCGCCCGACGATTGGCCAGCAAATGGAAACTGGCGACCAA---
-----CGGTTTGGCGATCTGGTTTTCCGCCAGCTGCACCGAATGTCTGGCAG
CACACTTCCTATCTCGACATGCCGNGTTTTCGGGGCAATCGCTTCCAACGGTTTGATCGTCAGGGATG
GCGGCCGCGTGCTGNTGGTGCATACCGCCTGGACCNAT

Gene *blaKPC* consensus:

NNNNNNNNNNNNNGCCNTCTAGTTCTGCTGTCTTGTCTCTCATGGCCGCTGGCTGGCTTTTTCTGCCA
CCGCGCTGACCAACCTCGTCGCGGAACCATTTCGCTAAACTCGAACAGGACTTTGGCGGCTCCATCGG
TGTGTACGCGATNGATACCGGNTCAGGCGCAACTGTAAGTTACCGCGCTGAGGAGCGCTTCCCAGT
TGCAGCTCATTCAAGGGCTTTCTTGTGCTGCCGCTGTGCTGGCTCGCAGCCAGCAGCAGGCCGCTTG
CTGGNCACACCCATCCGTTACGGCAAAAATGCGCTGGTTCNGNGGTCACCCATCTCGGAAAAATATC
TGACAACAGGCATGACGGTNNNGGAGCTGTCCGCGGCCGCGTGAATACAGTGATAACGCCGCGCG
CCAATTTGTTGCTGAAGGAGTTGGGCGGCCCGGCCNNNCTGACGGCCTTCATGCGCTCTATCGGCG
ATACCACGTTCCGTCTGGACCGCTGGGAGCTGGAGNTGAACTCCGCNATCCCAGGCGATGCGCGCG
ATACCTCATCGCCGCGCGCCGTGACGGAAAAGCTTACAAAACTGACACTGGGCTCTGCACTGGCTGC
GNCGCAGCGGCAGCAGNTTGTGATTGGCTAAAGGGAAACACGACCGGCAACCACCGCATCCGCGC
GGCGGTGCCGGCAGACTGGGCAGTCGGAGACAAAACCGGAACCTGCGGAGNGTATGNNNNNNCAA
ATGACTATGCCGTCTGCTGGCCACTGGGCGCGCACCTATTGTGTTGGCCGTCTACACCCGGGCGC
CTAACAAGGATGACAAGNACAGCGAGGCCGTATCGCCGCTGCGGCTAGACTGCGGCTCGAGGGAT
TGGCNNNNNNNNNNNNNNNN

Gene *blaGES* consensus:

ATGCGCTTCATTACGCNCTATTACTGGCAGNGATCGCTCACTCTGCATATGCNTCGGAAAAATTAAC
CTTCAAGACCGATCTTGAGAAGCTAGAGCGGAAAAAGCAGCTCAGATCGGTGTTGCGATCGTCGAT
CCCCAAGGAGAGATCGTCGCGGGCCACCGAANGGCGCAGCGNTTTGCAATGTGCTCAACGTTCAAG
TTTCCGCTAGCCGCGCTGGTCTTTGAAAGAATTGACTCAGGCACCGAGCGGGGGGATCGAAAACCTT
CATATGGGCCGGACATGATCGTCNAATGGTCTCCTGCCACGGAGCGGTTTCTAGCATCGGGACACAT
GACGGTTCTCGAGGCAGCGCAAGCNGCGGTGCAGCTTAGCGACAATGGGGCTACTAACCTCTTACT
GAGAGAAATTGGCGGACCTGCTGCAATGACGCAGTATTTTCGTAATAATTGGCGACTCTGTGAGTCGG
CTAGACCGGAAAGAGCCGGAGATGNNGCACAACACACTGGCGACCTCAGAGATACTAACCTACGCCT
ATTGCTATGGCACGTAAGTGGCNAAGTCTCTATGGCGGCGCACTGACGTCCACCTCGACCCACA
CCATTGAGAGGTGGCTGATCGGAAACCAAACGGGAGACGCGACNCTACGAGCGGGTTTTCTCTAAAG
ATTGGGTTGTTGGAGAGAAAACCTGGTACCTGCGCCAACGGGNCNCCGGAACGACATTGGTTTTTTAA
AGCCCAGGAGAGAGATTACGCTGTAGCGGTGTATACAACGGCCCCGAAACTATCGGCCGTAGAACGT
GACGAATTAGTTGCCTCTGTGCGTCAAGTTATTACACAACCTATCCTGAGCACGGACAAATAG

Gene *blaCTX-M*:

Subgroup CTX-M 1 consensus:

NNGGTTAAAAAATCACTGCGNCAGTTCACGCTGATGGCGACGGCANCCGTCACGCTGTTGTTAGGAA
GTGTGCCGCTGTATGCGCAAACGGCGGACGTACAGCAAAAACCTTGCCGAATTAGAGCGGCAGTCGG
GAGGCAGACTGGGNGTGGCATTGATTAACACAGCNGATAATTGCAAATACTTTATCGTGCTGATGAG
CGCTTNGCGATGTGCAGCACCAAGTAAAGTATGGCCGNGGCCGCGGTGCTGAAGAAAAGTAAAAGC
GAACCGANTCTGTTAAATCAGCGAGTTGAGATCAAAAATCTGACCTNGTTAACTATAATCCGATTGC
GGAAAAGCACGTCAATGGGACGATGTCACTGGCTGAGCTTAGCGCGGCCGCGCTACAGTACAGCGA
TAACGTGGCGATGAATAAGCTGATTGCTCACGTTGGCGGCCCGGCTAGCGTCACCGCGTTCCGCCG
ACAGCTGGGAGAGCAAACGTTCCGTCTCGACCGTACCGAGNCGACGTTAAACACCGCCATTCCGGG
CGATCCGCGTGATAACCACTTACCTCGGGCAATGGCGCAAACCTCTGCGGAATCTGACGCTGGGTAAA
GCATTGGGCGACAGCCAACGGGCGCAGCTGGTGACATGGATGAAAGGCAATACCACCGGTGCAGCG

AGCATTCAAGCNGGACTGCCTGCTTCTGGTTGTGGGGGATAAAACCGGCAGCGGTGNCTATGGC
ACCACCAACGATATCGCGGTGATNTGGCCAAAAGATCGTGCGCCGCTGATTCTGGTCACTTACTTCA
CCCAGCCTCAACCTAAGGCAGAAAGCCGTCGCGATNTATTAGCGTCGGCGGCTAAAATCGTCACCNA
NNNNNNNNNN

Subgroup CTX-M 2 consensus:

ATGGTTAAAAAATCACTGCGNCAGTTACGCTGATGGCGACGGCAACCGTCACGCTGTTNTTAGGAA
GTGTGCCGCTGNATGCGCAAACGGNGGACGTACAGCAAAAACCTTGCCGAATTAGAGCNGCAGTCGG
GAGNNGNCTGGGTGTGGCATTGATTAACACNCGNGATAATTGCAAATACTTTATCGTGCNGATGA
GCGNTTNCNATGTGCAGNACCAGTAAAGTATGGCNGNNGCNGCGGTGCTNAAGNANAGTAAAN
NNAANNNGNANCTGNTNAATCAGCNNGTNGAGATCAANNNNNCNGANNTNGTTAACTANAATCCGATT
GCNGAAAANCACGTCNANGGNACNATGNCNCTGGNNGANCTNAGCGNGGCCGCGNTNCAGTACAGC
GANAANNNGCNATGAANAANNTGATTNCCANNTNGGNGGCCCGGNNNGCGTNACNGCNTTNGCC
CGNNNGTNGGNGANGANACGTTNCGTCTNGANCGNACNGANNACGNTNAANACNGCCATTCCN
GGCGANCCGNGNANACCACNNCNCNCGGCNGATGGCGCANACNNTGCGNNANCTNACGCTGGG
TNANGCNNTGGGNGANANCCANCGGCGCAGNTGGTGACNTGGNTNAAAGGCAATACNACCGGNG
CNGCNAGNATTCNGGCGGNNNTNCCNNTCNTGNNNTGTGGGNGATAANACCGGCAGCNGTGNCT
ATGNACCACCAACGATATCGCGGTGATNTGGCCAAAAGATCGTGCGCCGCTGATTCTGGTCANTTA
CTTCACCCAGCCNCAACCTAAGGCAGAAAGCCGTCGCGATGTATTAGCGTCGGCGGCTAAAATCGTC
ACCNACGGTTTGTAN

Subgroup CTX-M 3 consensus:

ATGGTGACAAAGAGAGTGCAACGGATGATGTTTCGCGGCGGCGGCGTGCATTCCGCTGCTGCTGGGC
AGCGCGCCGCTTTATGCGCAGACGAGTGCGGTGCAGCAAAAGCTGGCGGCGCTGGAGAAAAGCAG
CGGAGGGCGGCTGGGCGTCNCGCTCATCGATAACCGCAGATAATACGCAGGTGCTTTATCGCGGTGA
TGAACGCTTTCCAATGTGCAGTACCAGTAAAGTTATGGCGGNCGCGGCGGTGCTTAAGCAGAGTGAA
ACGCAAAAACAGCTGCTTAATCAGCCTGTTCGAGATCAAGCCTGCCGATCTGGTTAACTACAATCCGAT
TGCCGAAAAACAGCTCAACGGCACAAATGACGCTGGCAGANCTGAGCGCGGCGCGTTCAGTACAG
CGACAATACCGCCATGAACAAATTGATTGCCAGCTCGGTGGCCCGGAGGCGTGACGGCTTTTGC
CCGCGGATCGGCGATGAGACGTTTCGTCTGGATCGCACTGAANCTACGCTGAATACCGCCATTCCC
GGCGACCCGAGAGACACCACCGCCGCGGCGATGGCNCAGACGTTGCGTCAGCTTACGCTGGG
TCATGCGCTGGGCGAAACCCAGCGGCGCAGTTGGTGACGTGGCTCAAAGGCAATACGACCGGCGC
AGCCAGCATTCCGGCCGGCTTACCGACGTCGTGGACTGNNGGTGATAAGACCGGCAGCGGCGNCTA
CGGCACCACCAATGATATTGCGGTGATCTGGCCGAGGGTCGTGCGCCGCTGGTTCTGGTGACCTA
TTTTACCCAGCCGCAACAGAACGCGAGAGNGCCGCCGCGATGTGCTGGCTTACGCGGCGAGAATCAT
CGCCGAAGGGNTGTNA

Subgroup CTX-M 4 consensus:

NNNATGAGANANNGCGTNANGCGGNNGATNNTAATGACNACNGCCTGTNTTTCGCTGNTGNTGGNNA
GTGNGCCGCTGTNTGNCNANGCGAACGANNTTANCANAAGCTNGCGGCGCTGGAGAAAAGCAGCG
GGGNGCGNNTGGGNGTGGCGNTGATTNACACCGCCGATAACNCCNAGACGCTCTACCGCGCCGAN
GAGCGNTTTCNATGTGCAGCACCAGTAANGTATGGCNGNNGCGGCGNGTGTNAAGCAAAGTGAA
ACGCAAAAANNNTNNTGAGTCAGNNGGTTGANATTAANNCTCNGACNTGNTTAACTACAANCCNAT
NNCNGAAAANCACGTCAANGGCACGATGACNNTNGNGANNTGANCGCNGCGGCGNTNCAGTACAG
CGANAATACNGCCATGAANAAGCTGATTGCCATCTNNGGGGGCCGNTAAAGTGACGGCNTTTC
NCGNNNGATTGGNGATNACACNTTCCGGCTCGATCGTACNGAGCCGACGCTCAACACCGCGATCCC
CGGCGACCCGCGGATACCACCACGCCNTTAGCGATGGCGCAGNCNCTNCGCNATCTNACNTTGGG
CANTGCCNTNGGTGANACTCAGCGTGCGCANCTGGTNANGTGGCTGAAAGGCAANACCACCGGNGC
TGCCAGCATTNNGGCGGGCTACCCACATCGTGGGTTGTCGGGGATAAAACCGGCAGCGGNGNTTA
TGGTACGACGAATGANATCGCNGTATNTGGCCGGAAGGNGCNGCGCCGCTNNTTCTGGTNACTTA
CTTCACCCANNNGAGCNGAAGGCAGANANNCGTGTCGTGACGTNCTCGCNGCTGCCGCNANAATNGT
CACCGACGGTTATTAN

Subgroup CTX-M 5 consensus:

ATGATGACNCAGAGCATTCCCGCNCNNATGNTNACNGTATGGCGACNCTNCCCCTGCTNTTTAGCA
GCGCNACNCTGCANGCGCAGNCGAACAGCGTGACANCAGCAGCTGGAAGCNCTGGANAAAAAGNNNN
GGNGGNGCNCTNGGCGTNGCGCTGATTAACACCGCNGATAANNNNCAGATTCTNTANNNGCNGAT
GANCGNTTTCGATGTGCAGNACCAGNAANGTATGGCGGCGGCGGCGGTGCTNAAACAGAGCGAN
AGCGATAANCANCTGCTNAANCAGCGCTNGAAATNANNNNNAGCGANCTGGTNAACTANAANCCNA
TTGCNGANAACANGTNAACGGCACNATGACNCTGGCNGANCTNGGCGCNGNNGCNGCTGCAGTATA

GCGANAANACNGCNATGAANAANCTGATTGCNCATCTGGNGNCCNGATAAAGTGACNGCGTTTGC
NCGCNNNTGGNGATGANACCTTNCNCTGGANNGNACCGANNCCACNCTNAANANCGCNATTCC
NGGCGANCCGCGNGATACCACCACNCCGCTNGCGATGGCGCAGACCCTGAAAAANCTGACNCTGGG
NAAAGCGCTGGCGAAACNCAGCGNCGNCAGNTGGTACNTGGCTNAANGCAANACNACCGGNA
GCGCGAGCATTNNGCGGGNCTGCCGAAANNNTGGNNGTGGGCGATAAAACCGGCAGCGGNGNT
TATGGCACCACCAACGATATNGCGNTNATNTGGCCGAAAACCANGCNCCTGCTGGTNTCTGGTACCT
ANTTTACCCANCCGGANCGAANGCGGAAAGNCGNCGNGATNTTCTGGCNGCGGCGGCGAAAATNG
TNACCCANGGNTTNNNN

Gene *blaOXA*:

Subgroup OXA 23 like consensus:

ATGAATAAATATTTTACTTGCTATGTGGTTGCTTCTCTTTTTCTTTCTGGTTGTACGGTTCAGCATAATT
TAATAAATGAAACCCNGAGTCAGATTGTTCAAGGACATAATCAGGTGATTCATCAATACTTTGATGAAA
AAAACACCTCAGGTGTGCTGGTTATTCAAACAGATAAAAAAATTAATCTATATGGTAATGCTCTAAGCC
GCGCAAATACAGAATATGTGCCAGCCTCTACATTTAAAAATGTTGAATGCCCTGATCGGATTGGAGAAC
CAGAAAACGGATATTAATGAAATATTTAAATGGAAGGGCGAGAAAAGGTCATTTACCGCTTGGAAAA
AGACATGACACTAGGAGAAGCCATGAAGCTTTCTGCAGTCCCAGTCTATCAGGAACCTGCNNGACGT
ATCGGTCTTGATCTCATGCAAAAAGAAGTANAACGTATTGNTTTCGGTAATGCTGAAATTGGACAGCA
GGTTGANAATTTCTGGTTGNTAGGNCCATTAAGGTNACGCCTATTCAAGAGGTAGAGTTTGTTCNC
AATTNGCACATACACAGCTTCCATTTAGTAAAAAGTGCAGGCTAATGTAATAAATATGCTNCTTNTAG
AAGAGAGTAATGGCTACAANATTTTTGGAAAGACTGGTTGG---GCAATGGATATAAAANCACA
AGTGGGCTGGTTGNCGGCTGGTTGAGCAGCCAGATGAAAAATTGTCGCTTTTGCATTAANATG
GAAATGCGGTGAGAAATGCCNGCATCTATACGTAATGAATTATTGATGAAATCATAAAACAGCTGAAT
ATTATTTAA

Subgroup OXA 24/40 like consensus:

ATGAAAAAATTTATACTTCTATATTCAGCATTCTATTCTAGTTTCTCTCAGTGCATGTTTCATCTATTAA
AACTAAATCTGAAGATAATTTTCATATTTCTTCTCAGCAACATGAAAAAGCTATTAAGCTATTTTGT
GAAGCTCAAACACAGGGTGAATTATTATTAAGAGGGTAAAAATCTTAGCACCTATGGTAATGCTCTT
GCACGAGCAAATAAAGAATATGTCCCTGCATCAACATTTAAGATGCTAANTGCTTTAATCGGGCTAGA
AAATCATAAAGCAACAACAAATGAGATTTTCAAATGGGATGGTAAAAAAGAAGTTATCCTATGTGGGA
GAAAGATGACTTTAGGTGAGGCAATGGCATTGTGCAGGTTCCAGTATATCAAGAGCTTGAAGAC
GGACTGGCCTAGAGCTAATGCAGAAAGAAGTAAAGCGGGTTAATTTTGGAAATACAAATATTGGAACA
CAGGTGCGATAATTTTTGGTTAGTTGGCCCCCTTAAATTAACACAGTACAAGAAGTTAATTTTGGCGAT
GACCTTGCACATAACCGATTACCTTTTAAATTAGAACTCAAGAAGAAGTTNAAAAAATGCTTCTAATTA
AAGAAGTAAATGGTAGTAAGATTTATGCAAAAAGTGGATGGGNAATGGNTGTTACTNCACAGGTAGGT
TGGTTGACTGGTTGGGTGGAGCAAGCTAATGGAAAAAATCNCCTTTTTCGCTCACTTAGAAATGAA
AGAAGGAATGNCTGGTTCTATTGTAATGAAATTAATAAGTNGCTAGAAAATCTTGAATCATTTA
A

Subgroup OXA 48 like consensus:

ATGCGTGTATTAGCCTTATCGGCTGTGTTTTGGTGGCATCGATTATCGGAATGCCNGCGGTAGCAAA
GGAATGGCAAGAAAACAAAAGTTGGAATGCTCACTTTACTGAANATAAATCACAGGGCGTAGTTGNGC
TCTGGAATGAGAATAAGCAGCAAGGATTTACCAATAATCTTAAACGGGCGAACCAAGCATTTTTACCC
GCATCTACCTTTAAAATTCCCAATAGCTTGATCGCCCTCGATTTGGGCGTGGTTAAGGATGAACACCA
AGTCTTTAAGTGGGATGGACANNGCGNGATATCGCCNCTTGAATCGNGANCATNANNTAATNACC
GCGATGAANTANTCNGTTNTGCCGTGTTNATCAANNTTGGCCGCCAAATTGGNGAGGCACGTATGA
GNAANATGCTNCANGCNTTCGATTATGGNAATGAGGANATNTCGGGCAATNTAGNNANTTTNTGGCTN
GANGGTGGNATTTCGNATTTTCGGCNACNAGCAAAATCNNNTTTTANGNAAGCTGTATCAANAAGNT
NCACGTNTCNGAGCGNAGNCAGCGNATNGTNAACAAGCCATGCTNACNGANGCNAATGNNGACTAT
ATTATTCGGGCTAAAACNGGNNNNNNNNNNNNNNNNCNANNCTAAGATTGGCTGGTGGGTNGGTTGG
GTTGANCTNGATGATAATGTGTGGTTTTTTCGATGAATATGGATATGCCACATCGGATGGTTTAGG
GCTGCGCCAAGCCATCACAAAAGAAGTGTCAAACAGGANAAAATTATCCCTAG

Subgroup OXA 51 like consensus:

ATGAACATTNAANCNCTCTTACTTATAACAAGCGCTATTTTTATTTACGCC---TGCTCACCTT
ATATAGTGNCTGCTAATCCAAATCACAGNGCTTCAAAATCTGATNNNAAAGCAGAGAAAATTTAAAT
TATTTAACGAAGNACACACTACGGGTGNTTATGTTATCCANCAAGGNCAAACCAACAAAGCTATGGT

AATGATCTTGCTCGTGCTTCGACCGAGTATGTACCTGCTTCGACCTTCAAAATGCTTAATGCTTTGATC
GGCCTTGAGCACCATAAGNCAACCACNACAGAAGTATTTAANTGGNANGGNAAAAAAGGNTNTTCC
CAGAAATGGGAAAAGNACATGACCCTAGGCGANGCNATGAAAGCTTCCGCTATTCNNGTTTATCAAGAT
TTAGCTCGTCGTATTGGACTTGANCTCATGTCTAANGAAGTGAAGCGTGTTGGTTATGGCAATGCAGA
TATCGGTACCCAAGTCGATAATTTTTGGNTNGTGGGTCCTNTAAAAATTACNCCTCAGCAAGAGGCAC
ANTTTGCTTACAAGCTAGCTAATAAAACGCTTCCATTTAGCCNAAAAGTCCAAGATGAAGTGCAATCCA
TGNTATTCATAGAAGAAAAGAATGGAAANAAAATATACGCAAAAAGTGGTTGGGGATGGGATGTANAC
CCACAAGTAGGCTGGTTAACTGGATGGGTTGTTTCAGCCTCAAGGNAATATTGTAGCNTTCTCCCTTAA
CTTAGAAATGAAAAAAGGAATACCTAGCTCTGTTTCGAAAAGAGATTACTTATAAAAAGNTTAGAACAATT
AGGTATTTTATAG

Figure S1

Primers specificity evaluation through Melting curve: (A) SHV, (B) KPC, (C) NDM, (D) TEM, (E) GES, (F) OXA-23, (G) OXA-24/40, (H) OXA-48, (I) OXA-51, (J) CTX-M 1, (K) CTX-M 2, (L) CTX-M 3, (M) CTX-M 4 e (N) CTX-M 5

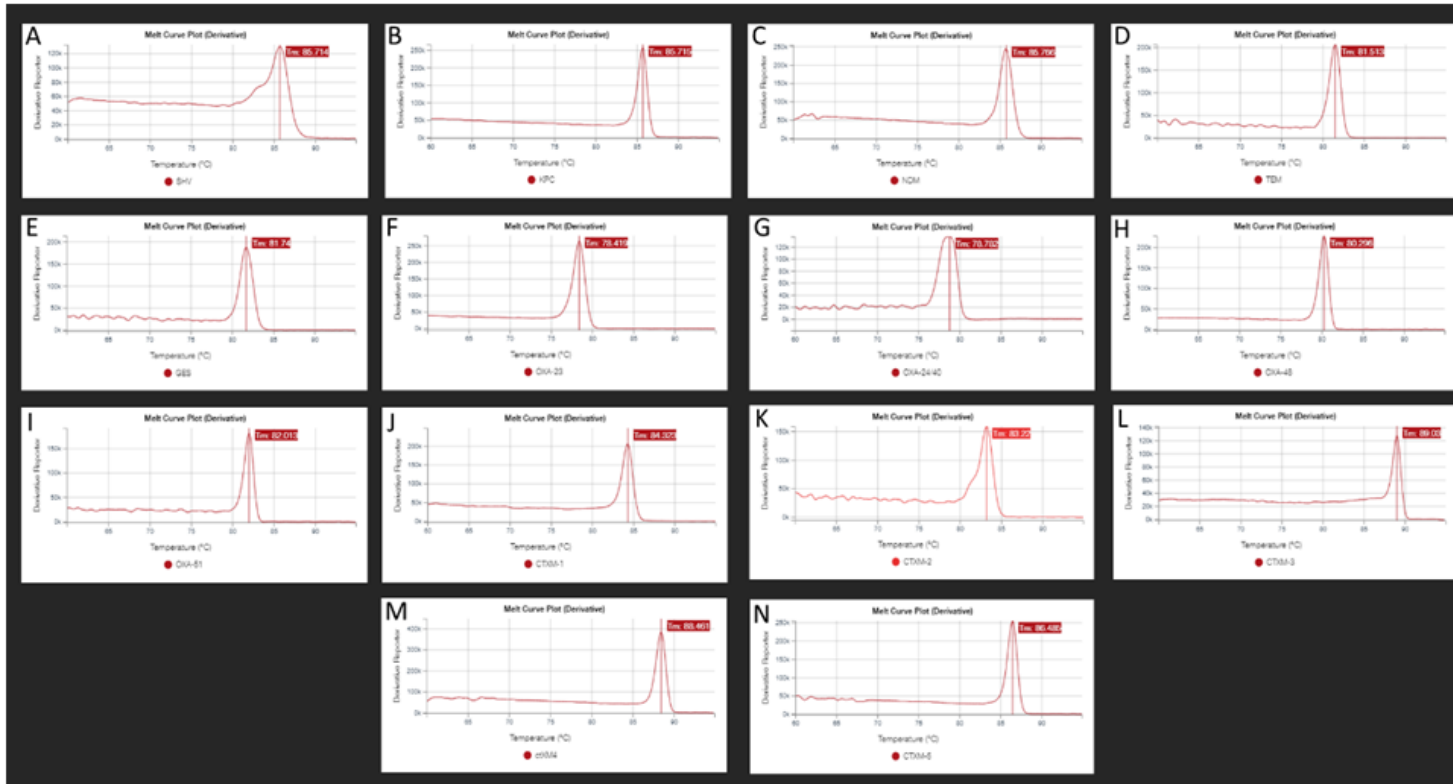


Figure S2

Plot analysis of the 25 main metabolites analyzed from the supernatant of susceptible *K. pneumoniae* in general without separation by up- or down-regulation of the analytes

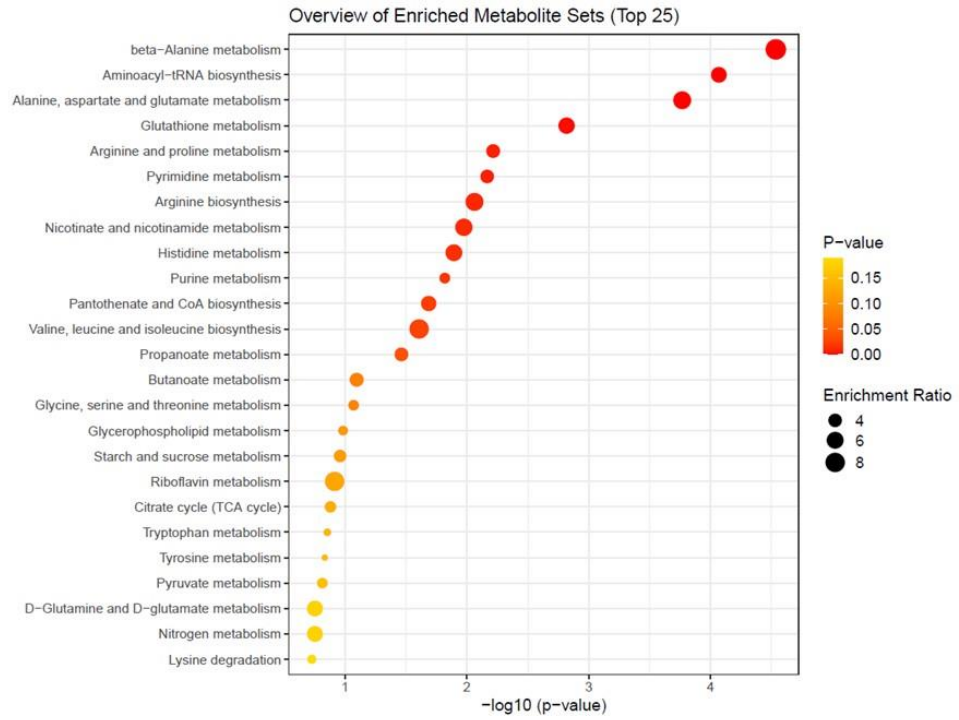


Figure S3

Plot of the analysis of the 25 main metabolites from the supernatant of susceptible *K. pneumoniae*, separated because they were up-regulated in relation to the control culture media

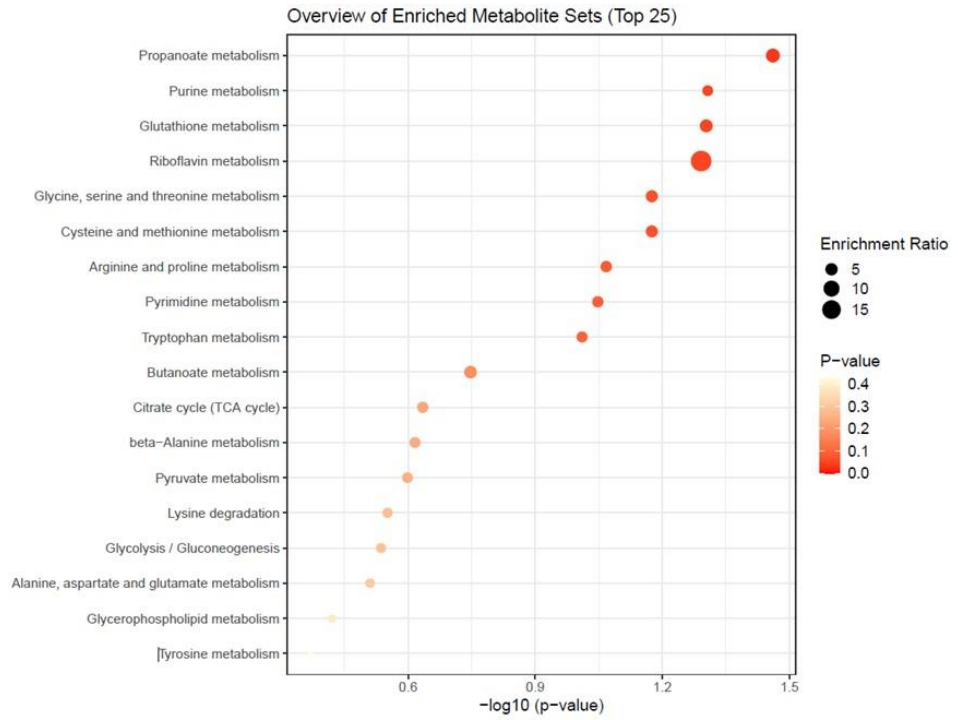


Figure S4

Plot of the analysis of the 25 main metabolites from the supernatant of susceptible K. pneumoniae, separated because they were down regulated in relation to the control culture media

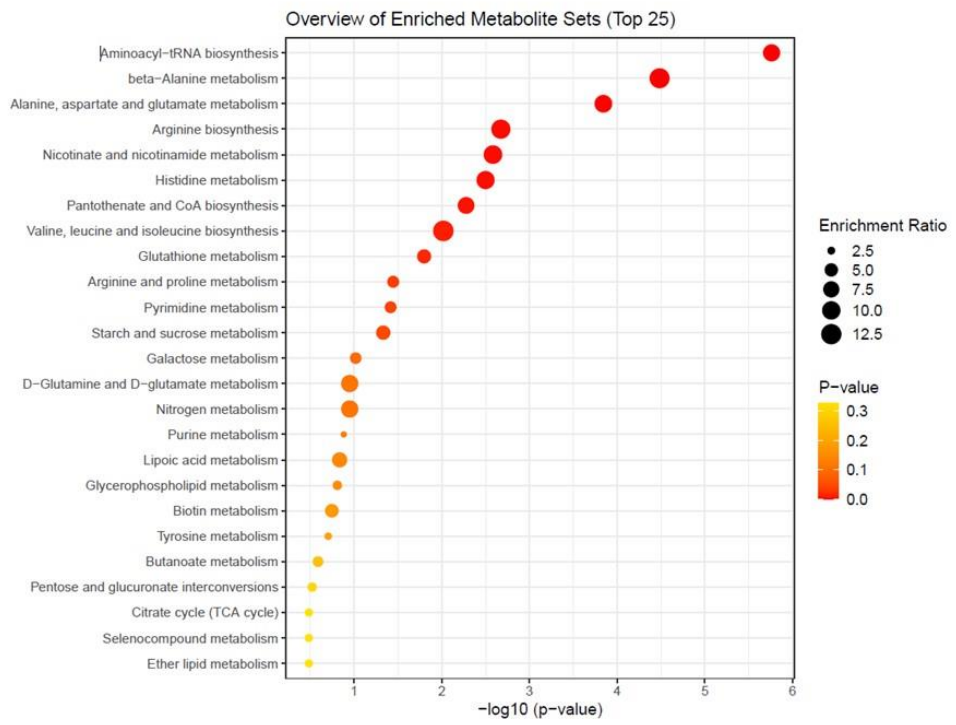


Figure S5

Plot of the analyzes of the 25 main metabolites from the supernatant of multidrug resistant (MDR) *K. pneumoniae* in general without separation by up- or down-regulation in the analytes

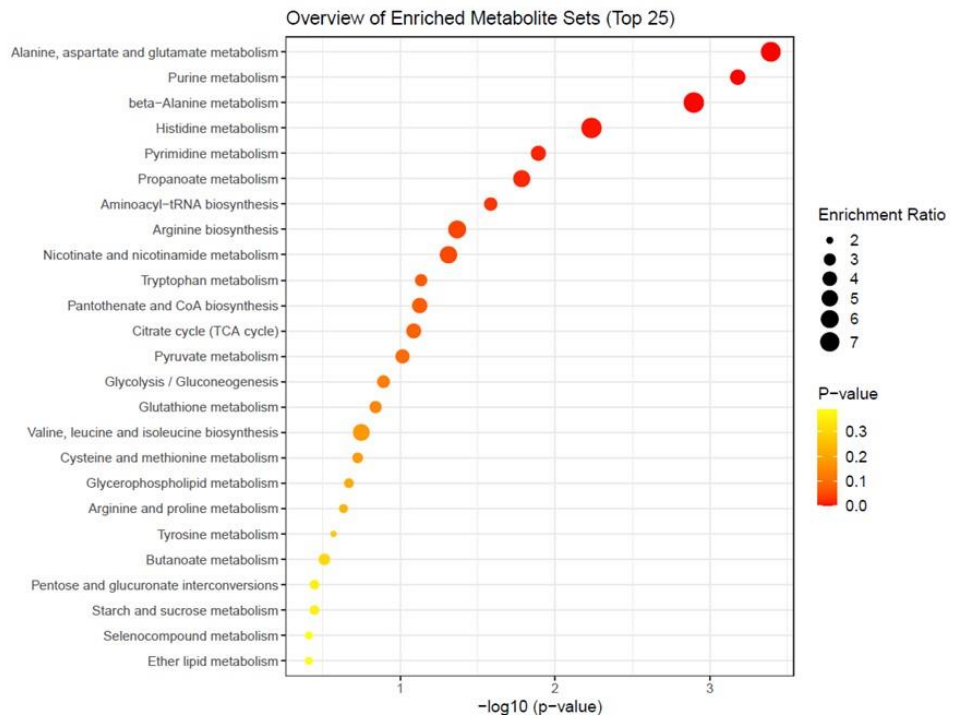


Figure S6

Plot of the analysis of the 25 main metabolites from the supernatant of *K. pneumoniae* MDR, separated by being up-regulated in relation to the control culture media

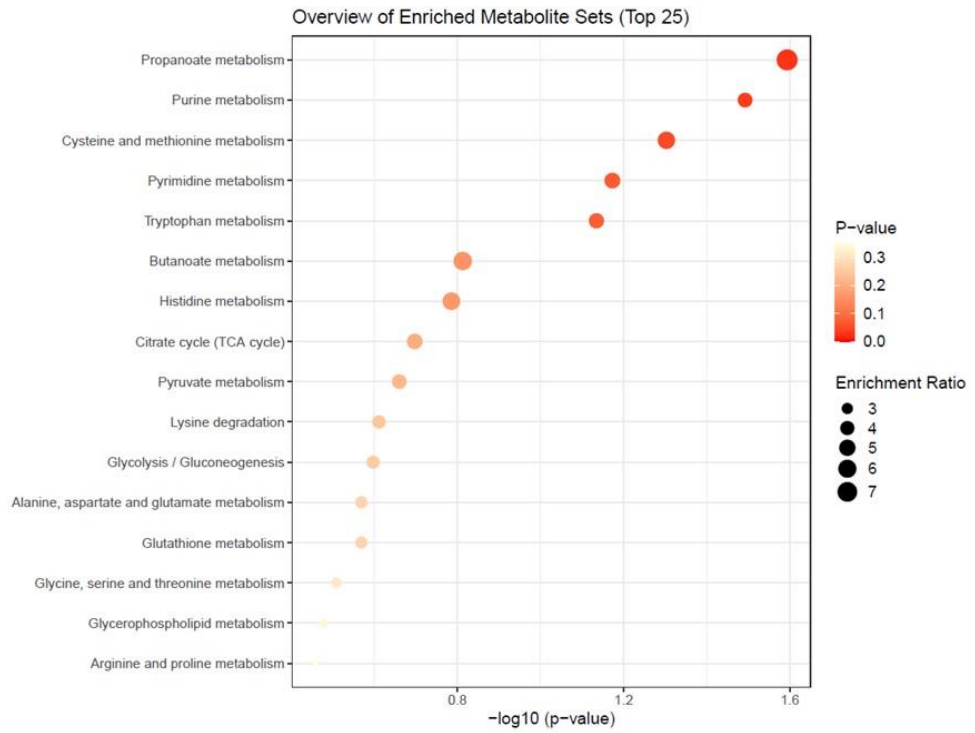


Figure S7

Plot d of the analysis of the 25 main metabolites from the supernatant of *K. pneumoniae* MDR, separated because they were down-regulated in relation to the control culture media

