

SUPPLEMENTAL INFORMATION

Figure S1.

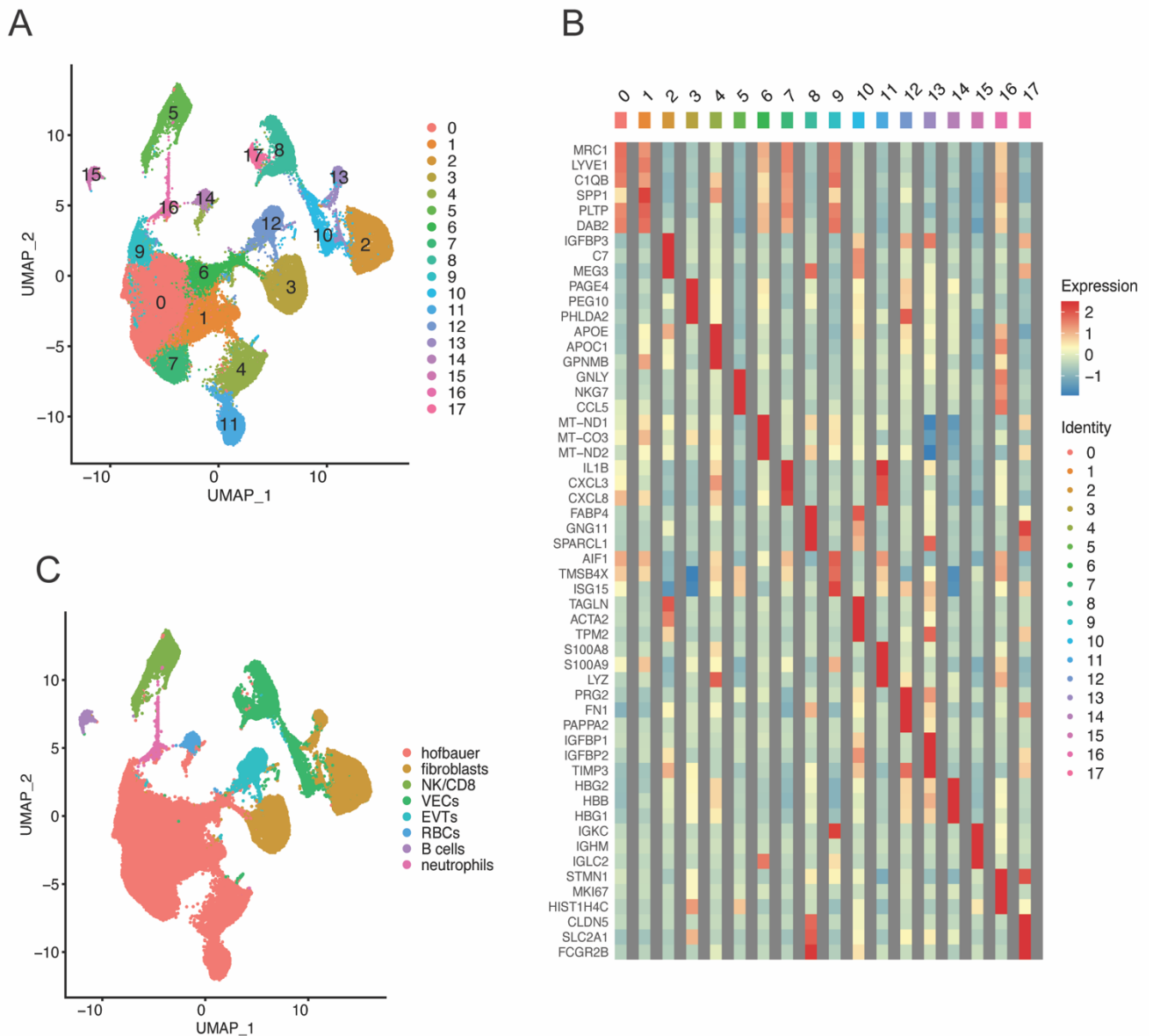
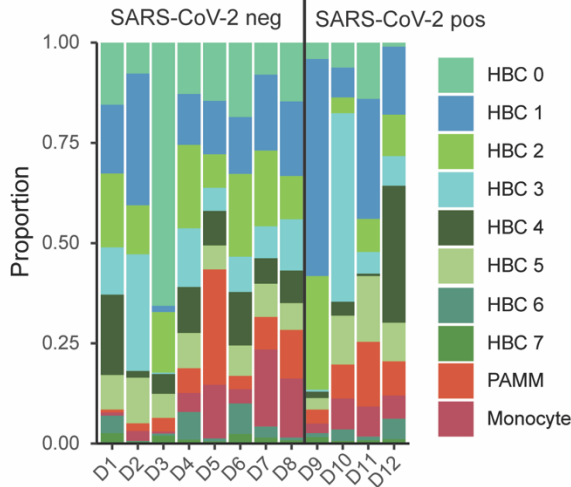


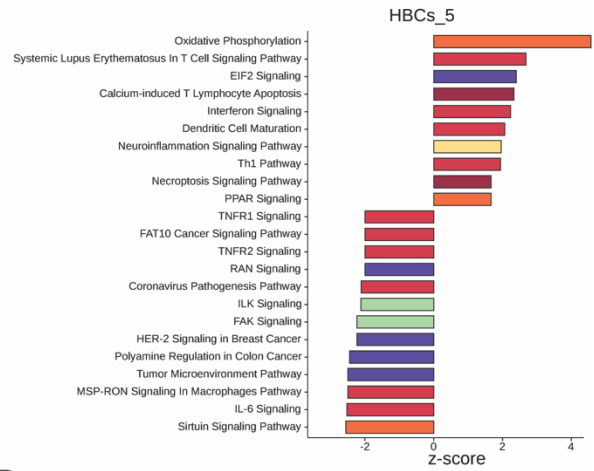
Figure S1. Initial graph-based clustering and cluster assignments. (A) Uniform Manifold Approximation and Projection (UMAP) visualization of 70,817 high-quality placental cells, enriched from placentas of pregnancies with (n=4) and without (n=8) SARS-CoV-2 infection, shows 18 clusters. (B) Heatmap displaying expression (log₂ fold change) of the top 3 marker genes per cluster. (C) UMAP visualization of cluster assignment by marker gene analysis demonstrating largest proportion of cells were macrophages/monocytes (labeled “hofbauer”) and subset for further quality control and reclustering. NK: natural killer cells. VECs: vascular endothelial cells. EVT: extravillous trophoblasts. RBCs: red blood cells.

Figure S2.

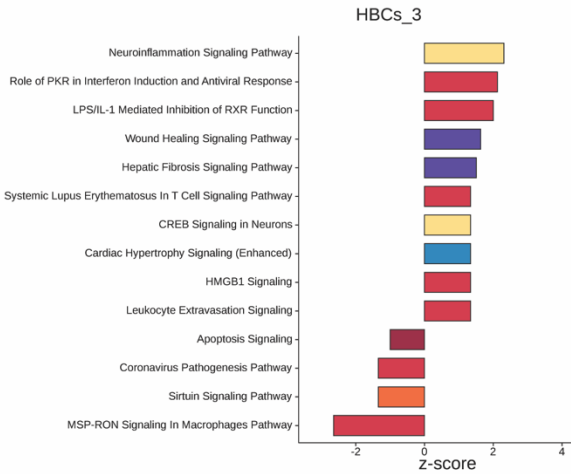
A



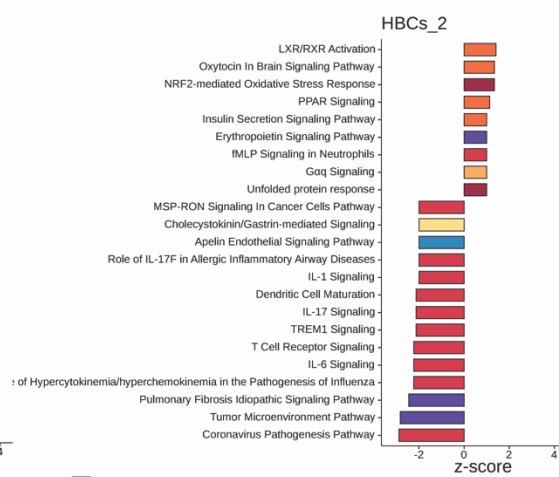
B



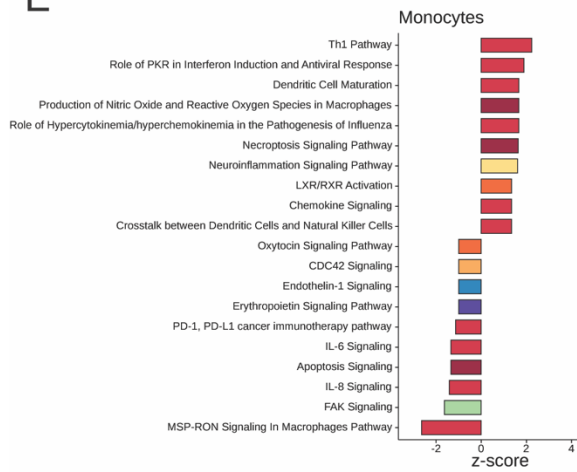
C



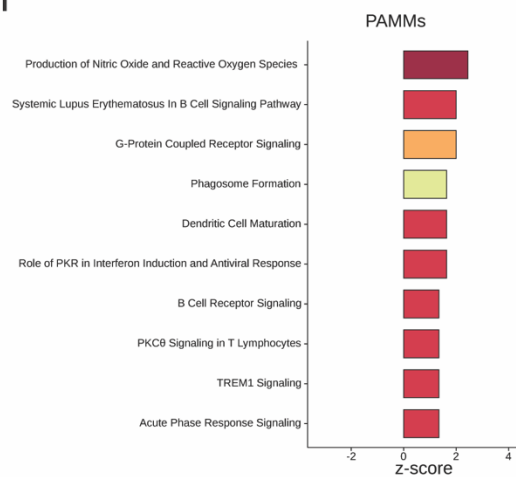
D



E



F

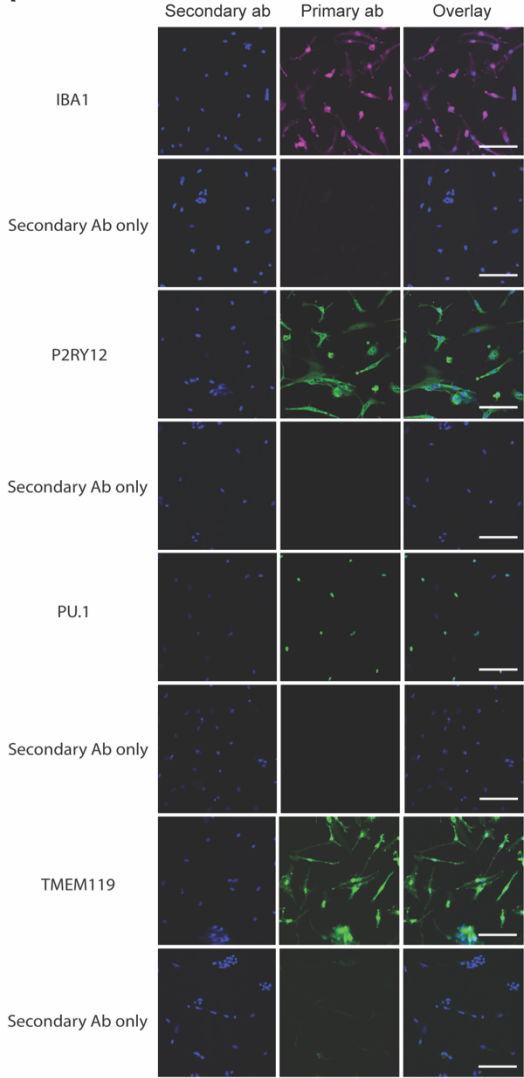


■ Apoptosis & stress response
■ Immune & pro-inflammatory responses
■ Endocrine & Metabolism
■ intracellular signaling/Rho GTPase signaling
■ Neurodevelopment/neuroinflammation/neurotransmitter
■ Phagocytosis
■ Cellular migration/chemotaxis
■ Transcriptional regulation & protein synthesis
■ Cardiovascular signaling, angiogenesis
■ Cellular growth, proliferation, development

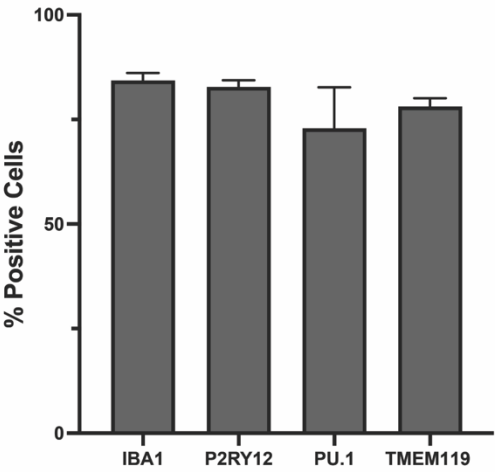
Figure S2. Impact of maternal SARS-CoV-2 infection on Hofbauer cell subclusters, PAMMs and monocytes. HBC: Hofbauer cell. PAMM: placenta-associated macrophage/monocyte. **(A)** Barplot demonstrating proportion of cells within each subcluster by participant. “SARS-CoV-2 neg” = no maternal SARS-CoV-2 infection during pregnancy. “SARS-CoV-2 pos” = positive maternal SARS-CoV-2 test during pregnancy. **(B-F)** Ingenuity Pathway Analysis (IPA) canonical pathways enrichment results of DEG by subcluster. IPA canonical pathways with absolute Z-score ≥ 1 and adjusted P-value < 0.05 are displayed.

Figure S3.

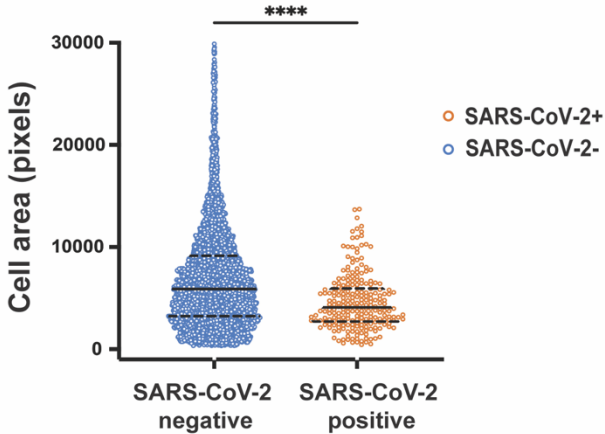
A



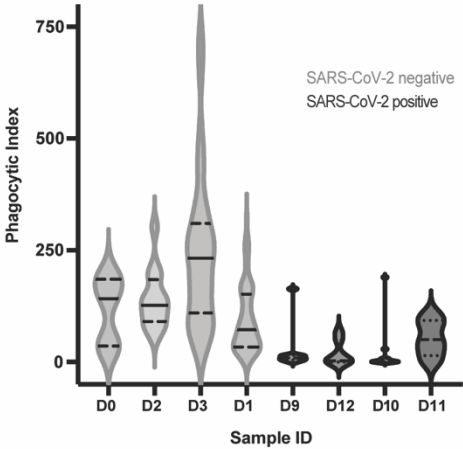
B



C



D



E

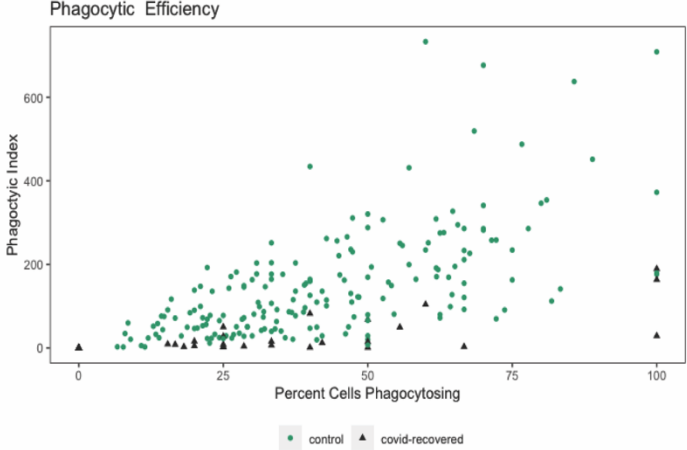


Figure S3. HBC-iMG phenotypic and functional characterization. HBC-iMGs: Hofbauer cells transdifferentiated toward microglia-like cells. Ab = antibody. **(A)** Confocal microscopy of immunostaining with primary antibody, secondary antibody (Hoechst nuclear stain) and overlay, showing lack of nonspecific staining. Scale bar = 100 μm . **(B)** Percentage of cells per sample with positive immunostaining. **(C)** Violin plots representing cell area (pixels) from cells in SARS-CoV-2 negative controls (blue, n=5257 cells) and positive cases (orange, n=232 cells). Solid lines represent median values and dashed lines interquartile range. Group differences assessed by Mann-Whitney U Test. ****P<0.0001. **(D)** Violin plot of phagocytic index per participant. Solid lines represent median values and dashed lines interquartile range. **(E)** Phagocytic Index by percent of cells engaged in any phagocytosis, by SARS-CoV-2 status. Green circles: SARS-CoV-2 negative controls (n=187 fields). Black triangles: SARS-CoV-2 positive cases (n=32 fields).

Figure S4.

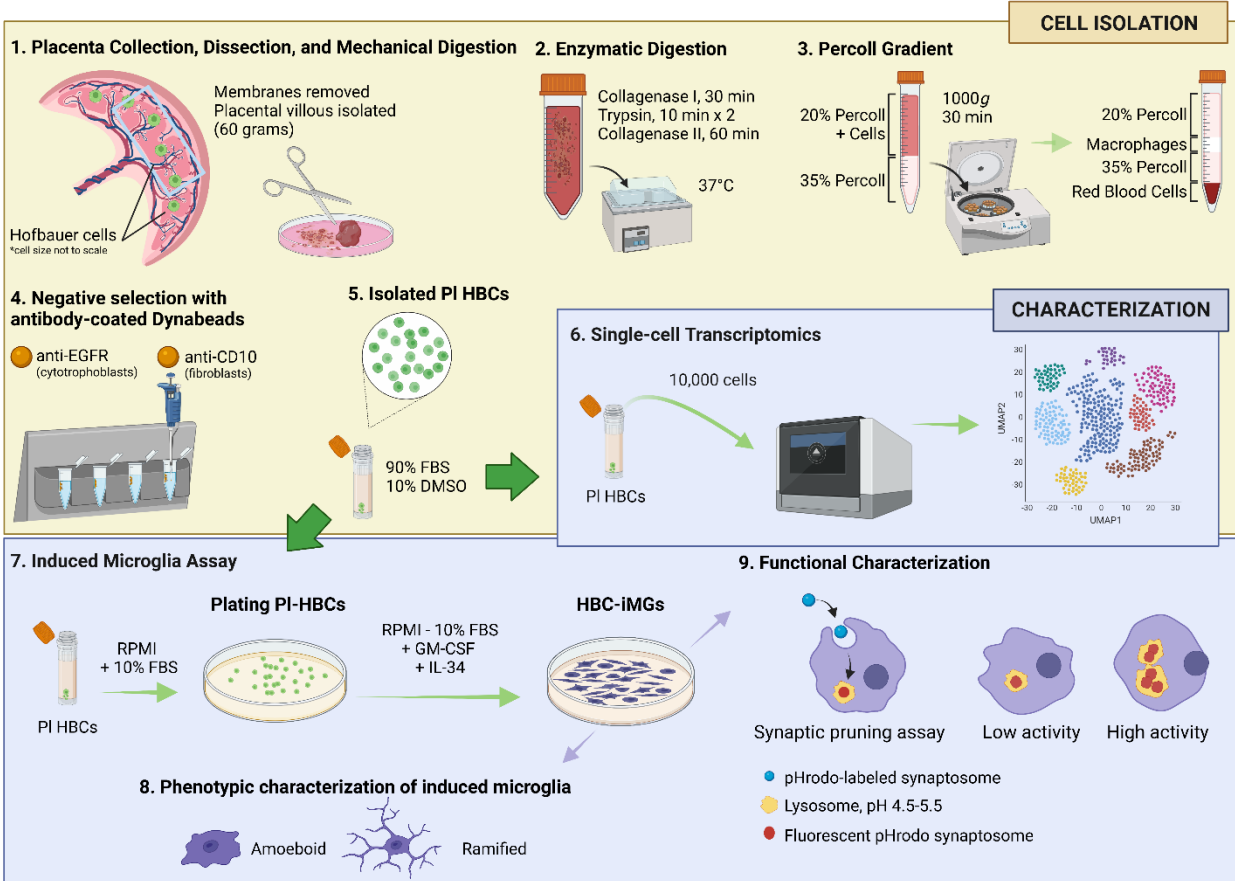


Figure S4. Schematic of Hofbauer cell isolation procedure workflow and downstream analyses. HBCs: Hofbauer cells. HBC-iMGs: Hofbauer cells transdifferentiated toward microglia-like cells. HBCs were isolated using collagenase and trypsin digestions, followed by centrifugation on Percoll gradients, and negative bead-based selection with antibody-coated anti-EGFR and anti-CD10 Dynabeads. HBCs were then characterized by single-cell RNA-Seq (10X Genomics) and cytokine induction to create HBC-iMGs. Image created in BioRender.

Table S1. List of reagents used in Hofbauer cell isolation procedure.

Reagents	Source	Cat#
Cytowash DMEM Medium Fetal Bovine Serum Pen/Strep (10,000 U/mL) Gentamicin	Thermo Fisher Scientific Cytiva Thermo Fisher Scientific Thermo Fisher Scientific	11965118 SH 30071.03 15140122 15750060
DPBS Wash 1X DPBS, Ca-/Mg-free Pen/Strep (10,000 U/mL)	Thermo Fisher Scientific Thermo Fisher Scientific	14190144 15140122
Collagenase Digestion 1 1X DPBS, Ca-/Mg-free Collagenase Type IA DNase I Hyaluronidase Bovine Serum Albumin CaCl (3M stock, 1000x)	Thermo Fisher Scientific Millipore Sigma Millipore Sigma Millipore Sigma Millipore Sigma Boston Bio Products	14190144 11088793001 DN25-1G H3506-1G A7906 MT-140-3M
Trypsin Digestion 1X DPBS, Ca-/Mg-free Trypsin DNase I CaCl (3M stock, 1000x)	Thermo Fisher Scientific Thermo Fisher Scientific Sigma Aldrich Boston Bio Products	14190144 Gibco 27250018 DN25-1G MT-140-3M
Collagenase Digestion 2 1X DPBS, Ca-/Mg-free Collagenase Type IA DNase I Hyaluronidase Bovine Serum Albumin CaCl (3M stock, 1000x) Dispase II	Thermo Fisher Scientific Millipore Sigma Millipore Sigma Millipore Sigma Millipore Sigma Boston Bio Products Thermo Fisher Scientific	14190144 11088793001 DN25-1G H3506-1G A7906 MT-140-3M 171105041
Gradient Solutions Percoll Hanks' Balanced Salt Solution 10X Hanks' Balanced Salt Solution 1X OptiPrep Density Gradient Medium	GE Healthcare Biosciences Thermo Fisher Scientific Thermo Fisher Scientific Millipore Sigma	17-0891-01 14185052 14175095 D1556-250mL
Dynabeads Goat anti-mouse IgG antibody conjugated Dynabeads Mouse anti-human EGFR Mouse anti-human CD10 antibody	Thermo Fisher Scientific Thermo Fisher Scientific Thermo Fisher Scientific	11033 MA5-16944 MA5-13070