

## Supplementary Material

### Effects of weather extremes on fecal contamination along pathogen transmission pathways in rural Bangladeshi households

Caitlin Niven<sup>1\*</sup>, Mahfuza Islam<sup>2</sup>, Anna Nguyen<sup>3</sup>, Andrew Mertens<sup>4</sup>, Amy J. Pickering<sup>5</sup>, Laura H. Kwong<sup>2</sup>, Mahfuja Alam<sup>6</sup>, Debashis Sen<sup>6</sup>, Sharmin Islam<sup>6</sup>, Mahbubur Rahman<sup>6</sup>, Leanne Unicomb<sup>6</sup>, Alan E. Hubbard<sup>4</sup>, Stephen P. Luby<sup>7</sup>, John M. Colford Jr.<sup>2</sup>, Benjamin F. Arnold<sup>8</sup>, Jade Benjamin-Chung<sup>3</sup>, Ayse Ercumen<sup>1</sup>

1. Department of Forestry and Environmental Resources, North Carolina State University, Raleigh, NC 27695
2. Division of Environmental Health Sciences, School of Public Health, University of California, Berkeley, CA 94720
3. Department of Epidemiology & Population Health, Stanford University School of Medicine, Stanford, CA 94305
4. Division of Epidemiology and Biostatistics, School of Public Health, University of California, Berkeley, CA 94720
5. Department of Civil and Environmental Engineering, University of California, Berkeley, CA 94720
6. Environmental Interventions Unit, Infectious Diseases Division, International Centre for Diarrhoeal Disease Research, Bangladesh, Dhaka, Bangladesh
7. Division of Infectious Diseases and Geographic Medicine, Stanford University School of Medicine, Stanford, CA 94305
8. Francis I. Proctor Foundation, University of California, San Francisco, CA 94143

\*Corresponding Author: Caitlin Niven, Jordan Hall Addition 2225, Raleigh, NC, 27606, +1 (415) 425 2910, [cgniven@ncsu.edu](mailto:cgniven@ncsu.edu)

Funding Sources: Bill & Melinda Gates Foundation, National Institutes of Health (NIH)

## Table of Contents

<b>Table S1:</b> <i>E. coli</i> reporting units and detection limits by sample type _____	<b>Page 2</b>
<b>Table S2:</b> Number of samples collected by sample type and study round _____	<b>Page 2</b>
<b>Table S3:</b> Percentages of study observations within each weather category across different antecedent timeframes _____	<b>Page 3</b>
<b>Table S4:</b> Number of study observations and geometric mean <i>E. coli</i> counts by sample type for each weather category across different antecedent timeframes _____	<b>Page 4</b>
<b>Table S5:</b> Adjusted <i>E. coli</i> count ratios by sample type associated with each weather category across different antecedent timeframes _____	<b>Page 5</b>
<b>Figure S1:</b> Daily precipitation and temperature, and monthly mean most probable number (MPN) of <i>E. coli</i> by sample type across the study period _____	<b>Page 6</b>
<b>Figure S2:</b> Adjusted <i>E. coli</i> count ratios by sample type associated with above-median and elevated temperature, compared to below-median temperature, during different antecedent periods _____	<b>Page 7</b>
<b>Figure S3:</b> Adjusted <i>E. coli</i> count ratios by sample type associated with heatwaves <sup>c</sup> within 7 and 14 days _____	<b>Page 8</b>

**Table S1. *E. coli* reporting units and detection limits by sample type**

	<b>Unit</b>	<b>Lower Limit (MPN)</b>	<b>Upper Limit (MPN)</b>
Stored water	100 mL	1	2419.6
Food	1 dry gram	1–2 <sup>a</sup>	2,494 – 48,392 <sup>a</sup>
Mother hands	2 hands	5	12,098
Child hands	2 hands	5	12,098
Source water	100 mL	1	2,419.6
Soil	1 dry gram	1,000–1887 <sup>b</sup>	2.42 x 10 <sup>6</sup> – 4.56 x 10 <sup>6</sup> <sup>b</sup>
Ponds	100 mL	100	241,960
Flies	1 fly	100	241,960

<sup>a</sup> Given a food moisture content range of 3-95%, a lower limit of 1 MPN and upper limit of 2,419.6 MPN per wet gram

<sup>b</sup> Given a soil moisture content range of 0-47%, a lower limit of 1,000 MPN and upper limit of 2,419,600 per wet gram

**Table S2. Number of samples collected by sample type and study round**

<b>Round</b>	<b>Round 1</b>	<b>Round 2</b>	<b>Round 3</b>	<b>Round 4</b>	<b>Round 5</b>	<b>Round 6</b>	<b>Round 7</b>	<b>Round 8</b>	<b>Round 9</b>	<b>Total</b>
Stored water	1623	641	592	571	599	581	582	574	587	6350
Food	1646	0	0	329	206	0	0	0	0	2181
Mother hands	0	720	705	684	682	668	662	643	633	5397
Child hands	1768	720	705	682	673	653	650	626	615	7092
Source water	1669	0	0	0	0	0	0	0	0	1669
Soil	1795	0	0	402	341	0	0	0	0	2538
Ponds	822	0	0	0	0	0	0	0	0	822
Flies	610	0	0	0	0	0	0	0	0	610
Total	9933	2081	2002	2668	2501	1902	1894	1843	1835	26659

**Table S3. Percentages of study observations within each weather category<sup>a</sup> across different antecedent timeframes. Study observation refers to unique combinations of household GPS coordinates and sample collection dates (total n=7253)**

	<b>0 Days</b>	<b>1 Day</b>	<b>2 Days</b>	<b>7 Days</b>	<b>14 Days</b>
No Rain	52.4% (3803)	45.1% (3274)	41.6% (3014)	31.3% (2270)	18.8% (1361)
Some Rain	38.2% (2773)	39.8% (2888)	38.3% (2776)	34.8% (2525)	34% (2468)
Heavy Rain	4.4% (319)	7.2% (521)	8.8% (641)	11.8% (858)	14.5% (1051)
Extreme Rain	4.9% (358)	7.9% (570)	11.3% (822)	22.1% (1600)	32.7% (2373)
Below Median Temp	52.6% (3812)	48.0% (3483)	46.1% (3344)	42.1% (3051)	38.4% (2785)
Above Median Temp	38.3% (2778)	40.0% (2903)	39.9% (2896)	37.9% (2748)	34.3% (2486)
Extreme Temp	9.1% (663)	12.0% (867)	14.0% (1013)	20.0% (1454)	27.3% (1982)
No Heatwave	--	--	--	90.2% (6543)	87.5% (6343)
Heatwave	--	--	--	9.8% (710)	12.5% (910)

<sup>a</sup> Weather classifications are as follows: No Rain (0 mm), Some Rain (<16.4 mm), Heavy Rain ( $\geq 16.4$  and < 28.2 mm), Extreme Rain ( $\geq 28.2$  mm), Below Median Temp (< 27.1°C), Above Median Temp ( $\geq 27.1$  and < 30.2°C), Extreme Temp ( $\geq 30.2$ °C), No Heatwave (<30.9°C), Heatwave ( $\geq 30.19$ °C for 3 consecutive days).



**Table S5. Adjusted<sup>a</sup> *E. coli* count ratios by sample type<sup>b</sup> associated with each weather category<sup>c</sup> across different antecedent timeframes**

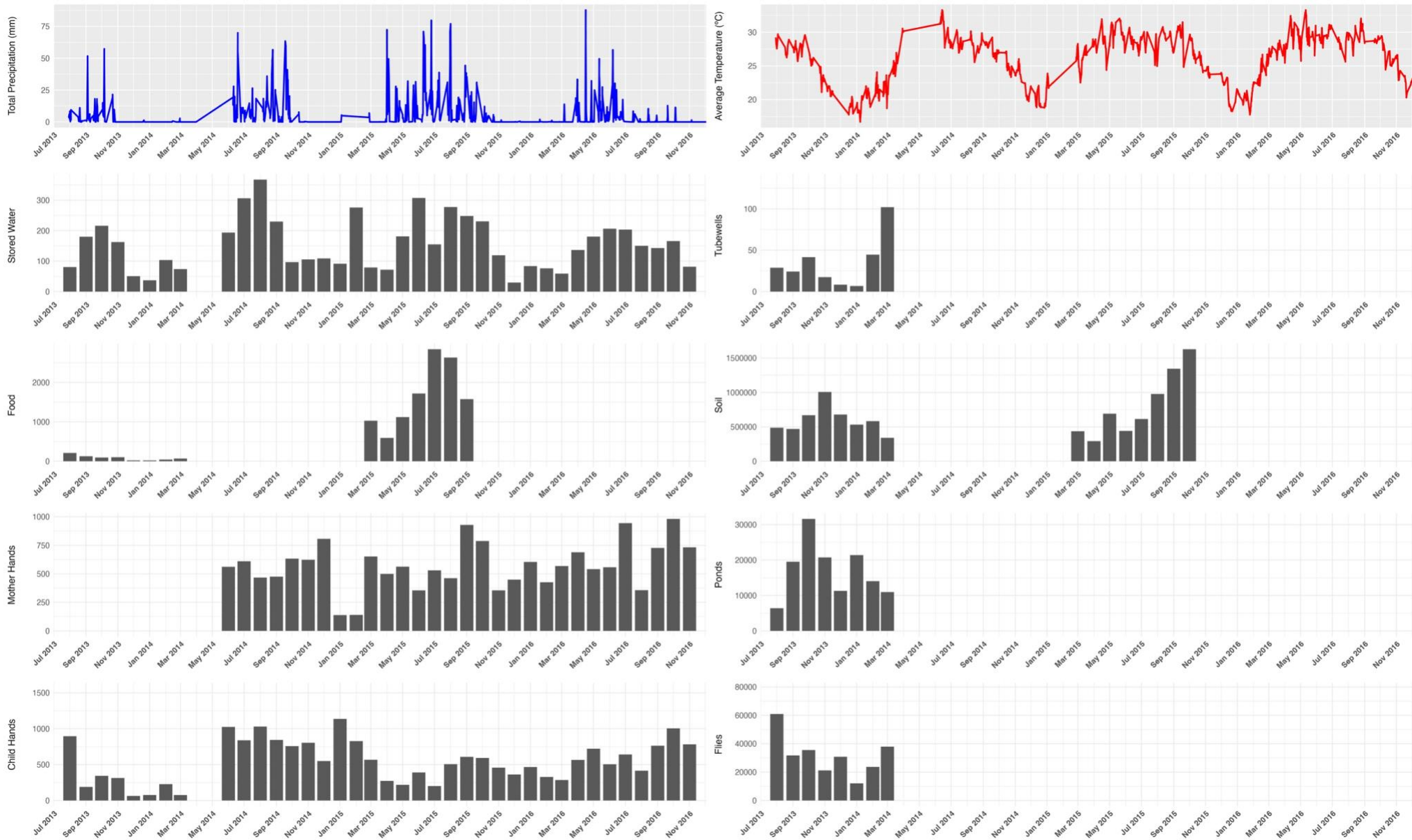
Adjusted	Stored Water (N=6350)		Food (N=2181)		Mother Hands (N = 5397)		Child Hands (N= 7092)		Source Water (N=1669)		Soil (N=2538)		Ponds (N=822)		Flies (N=610)	
	<i>E. coli</i> Ratio (95% CI)	p-value	<i>E. coli</i> Ratio (95% CI)	p-value	<i>E. coli</i> Ratio (95% CI)	p-value	<i>E. coli</i> Ratio (95% CI)	p-value	<i>E. coli</i> Ratio (95% CI)	p-value	<i>E. coli</i> Ratio (95% CI)	p-value	<i>E. coli</i> Ratio (95% CI)	p-value	<i>E. coli</i> Ratio (95% CI)	p-value
<b>Day of</b>																
No Rain	ref	--	ref	--	ref	--	ref	--	ref	--	ref	--	ref	--	ref	--
Some Rain	1.67 (1.29, 2.17)	< 0.0005	1.45 (0.89, 2.35)	0.357	0.96 (0.72, 1.28)	0.771	1.38 (1.09, 1.74)	0.008	0.36 (0.12, 1.07)	0.066	0.87 (0.73, 1.05)	0.140	1.52 (1.03, 2.25)	0.036	0.95 (0.27, 3.39)	0.941
Heavy Rain	1.674 (1.02, 2.64)	0.041	2.06 (1.22, 3.49)	0.007	1.62 (1.00, 2.60)	0.049	1.24 (0.68, 2.25)	0.478	1.93 (0.61, 6.13)	0.266	0.74 (0.52, 1.06)	0.101	4.46 (2.42, 8.20)	< 0.0005	0.94 (0.30, 2.99)	0.923
Extreme Rain	1.98 (1.36, 2.88)	0.041	3.13 (1.63, 5.99)	0.001	0.90 (0.57, 1.41)	0.632	0.92 (0.52, 1.60)	0.757	0.34 (0.07, 1.76)	0.198	0.36 (0.24, 0.53)	< 0.0005	3.46 (2.34, 5.11)	< 0.0005	0.03 (0.01, 0.19)	< 0.0005
Below Median Temp	ref	--	ref	--	ref	--	ref	--	ref	--	ref	--	ref	--	ref	--
Above Median Temp	1.71 (1.39, 2.11)	< 0.0005	5.31 (3.23, 8.73)	< 0.0005	0.90 (0.70, 1.15)	0.38	1.22 (0.97, 1.54)	0.095	°	°	0.79 (0.67, 0.93)	0.004	°	°	°	°
Extreme Temp	1.49 (1.05, 2.12)	0.025	5.60 (3.14, 10.00)	< 0.0005	1.02 (0.72, 1.43)	0.927	1.02 (0.65, 1.62)	0.919	°	°	1.15 (0.82, 1.60)	0.412	°	°	°	°
<b>1 Day</b>																
No Rain	ref	--	ref	--	ref	--	ref	--	ref	--	ref	--	ref	--	ref	--
Some Rain	1.77 (1.37, 2.29)	< 0.0005	1.19 (0.69, 2.07)	0.534	0.97 (0.73, 1.27)	0.798	1.03 (0.80, 1.34)	0.807	0.28 (0.12, 0.68)	0.005	0.95 (0.78, 1.17)	0.634	1.35 (0.93, 1.96)	0.111	0.91 (0.18, 4.75)	0.913
Heavy Rain	1.23 (0.81, 1.87)	0.324	1.49 (0.80, 2.78)	0.475	1.44 (0.94, 2.20)	0.093	0.80 (0.50, 1.28)	0.345	0.58 (0.09, 3.51)	0.42	0.89 (0.68, 1.16)	0.367	2.91 (1.24, 6.82)	0.014	0.64 (0.15, 2.71)	0.549
Extreme Rain	2.25 (1.57, 3.21)	< 0.0005	2.13 (1.19, 3.86)	0.011	1.18 (0.84, 1.66)	0.348	0.97 (0.63, 1.49)	0.877	0.10 (0.02, 0.62)	0.014	0.35 (0.25, 0.48)	< 0.0005	2.74 (1.51, 4.95)	0.001	0.28 (0.06, 1.39)	0.119
Below Median Temp	ref	--	ref	--	ref	--	ref	--	ref	--	ref	--	ref	--	ref	--
Above Median Temp	1.69 (1.35, 2.10)	< 0.0005	11.71 (7.21, 19.02)	< 0.0005	0.92 (0.70, 1.21)	0.554	1.25 (0.97, 1.61)	0.088	°	°	0.89 (0.75, 1.04)	0.145	°	°	°	°
Extreme Temp	1.62 (1.19, 2.22)	0.002	11.80 (6.48, 21.48)	< 0.0005	0.91 (0.66, 1.25)	0.565	0.93 (0.63, 1.37)	0.723	°	°	0.99 (0.73, 1.34)	0.959	°	°	°	°
<b>2 Days</b>																
No Rain	ref	--	ref	--	ref	--	ref	--	ref	--	ref	--	ref	--	ref	--
Some Rain	1.64 (1.27, 2.10)	< 0.0005	1.06 (0.62, 1.83)	0.822	0.85 (0.65, 1.11)	0.233	1.00 (0.76, 1.32)	0.991	0.20 (0.08, 0.50)	0.001	0.93 (0.74, 1.16)	0.506	1.80 (1.32, 2.45)	< 0.0005	5.34 (2.40, 11.89)	< 0.0005
Heavy Rain	1.21 (0.82, 1.81)	0.339	1.23 (0.68, 2.22)	0.49	1.24 (0.84, 1.83)	0.278	0.67 (0.43, 1.06)	0.087	0.21 (0.03, 1.62)	0.135	0.86 (0.66, 1.13)	0.280	3.36 (1.71, 6.57)	< 0.0005	3.99 (1.64, 9.68)	0.002
Extreme Rain	1.88 (1.34, 2.65)	< 0.0005	1.40 (0.81, 2.42)	0.226	0.94 (0.67, 1.32)	0.717	0.88 (0.62, 1.27)	0.503	0.34 (0.01, 1.13)	0.079	0.46 (0.34, 0.61)	< 0.0005	2.36 (1.22, 4.57)	0.011	4.10 (1.16, 14.48)	0.028
Below Median Temp	ref	--	ref	--	ref	--	ref	--	ref	--	ref	--	ref	--	ref	--
Above Median Temp	1.58 (1.24, 2.01)	< 0.0005	11.35 (6.79, 18.97)	< 0.0005	0.99 (0.76, 1.30)	0.964	1.33 (1.01, 1.75)	0.042	°	°	0.88 (0.74, 1.06)	0.183	°	°	°	°
Extreme Temp	1.63 (1.20, 2.23)	0.002	13.75 (7.56, 25.00)	< 0.0005	0.91 (0.67, 1.24)	0.555	0.98 (0.68, 1.41)	0.900	°	°	0.94 (0.72, 1.24)	0.662	°	°	°	°
<b>7 Days</b>																
No Rain	ref	--	ref	--	ref	--	ref	--	ref	--	ref	--	ref	--	ref	--
Some Rain	1.42 (1.06, 1.91)	0.019	0.59 (0.34, 1.02)	0.059	0.72 (0.53, 0.98)	0.039	0.88 (0.61, 1.28)	0.503	0.17 (0.07, 0.45)	< 0.0005	1.11 (0.83, 1.49)	0.494	1.14 (0.79, 66)	0.478	1.30 (0.51, 3.32)	0.582
Heavy Rain	1.47 (0.96, 2.23)	0.072	0.74 (0.36, 1.54)	0.426	0.96 (0.64, 1.44)	0.83	0.82 (0.53, 1.27)	0.372	0.07 (0.01, 0.47)	0.006	0.84 (0.61, 1.16)	0.283	2.34 (1.22, 4.49)	0.011	0.83 (0.26, 2.60)	0.744
Extreme Rain	1.77 (1.22, 2.57)	0.002	0.81 (0.49, 1.34)	0.418	0.67 (0.48, 0.94)	0.02	1.13 (0.76, 1.68)	0.548	0.13 (0.02, 0.63)	0.012	0.66 (0.49, 0.89)	0.007	1.52 (0.88, 2.63)	0.135	2.62 (0.98, 7.04)	0.056
Below Median Temp	ref	--	ref	--	ref	--	ref	--	ref	--	ref	--	ref	--	ref	--
Above Median Temp	1.61 (1.25, 2.07)	< 0.0005	13.09 (8.96, 19.12)	< 0.0005	1.10 (0.84, 1.46)	0.482	1.27 (0.92, 1.74)	0.150	°	°	0.93 (0.77, 1.14)	0.497	°	°	°	°
Extreme Temp	1.74 (1.33, 2.28)	< 0.0005	21.39 (14.46, 31.65)	< 0.0005	1.00 (0.76, 1.32)	0.979	0.90 (0.63, 1.27)	0.533	°	°	0.74 (0.56, 0.97)	0.029	°	°	°	°
No Heatwave	ref	--	ref	--	ref	--	ref	--	ref	--	ref	--	ref	--	ref	--
Heatwave	1.15 (0.85, 1.55)	0.378	0.81 (0.47, 1.40)	0.452	0.81 (0.59, 1.11)	0.189	0.79 (0.50, 1.27)	0.334	°	°	0.54 (0.38, 0.78)	0.001	°	°	°	°
<b>14 Days</b>																
No Rain	ref	--	ref	--	ref	--	ref	--	ref	--	ref	--	ref	--	ref	--
Some Rain	0.85 (0.60, 1.21)	0.371	0.80 (0.53, 1.21)	0.295	0.78 (0.54, 1.15)	0.210	1.05 (0.71, 1.54)	0.809	0.26 (0.09, 0.75)	0.013	1.16 (0.92, 1.45)	0.204	1.15 (0.86, 1.53)	0.336	0.70 (0.36, 1.35)	0.287
Heavy Rain	0.81 (0.55, 1.21)	0.312	0.64 (0.36, 1.14)	0.132	0.87 (0.51, 1.46)	0.591	1.18 (0.73, 1.90)	0.504	0.11 (0.02, 0.50)	0.004	0.82 (0.61, 1.10)	0.182	1.99 (1.29, 3.07)	0.002	0.66 (0.28, 1.58)	0.352
Extreme Rain	1.04 (0.67, 1.60)	0.869	0.65 (0.36, 1.15)	0.141	0.81 (0.49, 1.35)	0.422	1.27 (0.82, 1.97)	0.292	0.23 (0.05, 1.07)	0.062	0.78 (0.57, 1.05)	0.102	1.60 (0.99, 2.60)	0.057	1.91 (0.74, 4.90)	0.179
Below Median Temp	ref	--	ref	--	ref	--	ref	--	ref	--	ref	--	ref	--	ref	--
Above Median Temp	1.46 (1.12, 1.91)	0.005	11.37 (7.61, 16.98)	< 0.0005	1.23 (0.90, 1.69)	0.189	1.07 (0.76, 1.50)	0.691	°	°	0.94 (0.74, 1.18)	0.584	°	°	°	°
Extreme Temp	1.52 (1.17, 1.96)	0.001	20.74 (14.53, 29.61)	< 0.0005	1.01 (0.73, 1.39)	0.944	0.78 (0.55, 1.11)	0.162	°	°	0.80 (0.63, 1.03)	0.088	°	°	°	°
No Heatwave	ref	--	ref	--	ref	--	ref	--	ref	--	ref	--	ref	--	ref	--
Heatwave	1.14 (0.86, 1.51)	0.359	1.58 (0.94, 2.66)	0.086	0.79 (0.57, 1.09)	0.149	0.74 (0.51, 1.08)	0.116	°	°	0.50 (0.36, 0.70)	< 0.0005	°	°	°	°

<sup>a</sup> Models for rainfall adjusted for temperature and vice versa. All adjusted models also controlled for the following variables: Binary intervention variable (intervention or control), sex of index child, age of index child (in days), number of children under the age of 18 in the household, number of people in the compound, mother's age (in years), mother's educational status, food security category (using HFIAS scale), minutes to water source, household having improved walls, household having improved floors, household wealth quintile based on owned assets, number of cows, goats and chickens/ducks in the compound, source water origin from a tubewell. Food models included hours since stored food was prepared and stored drinking water models included covered storage container, narrow-mouth storage container, and hours water has been stored.

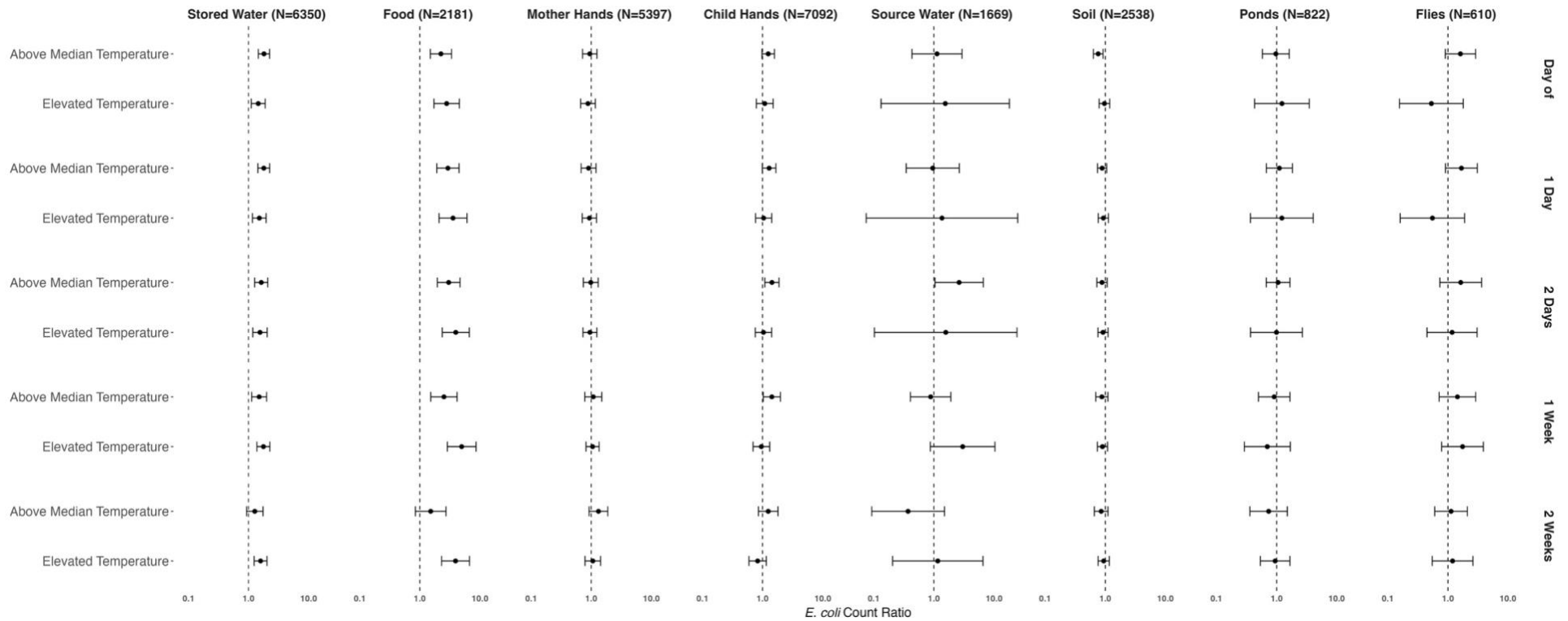
<sup>b</sup> We could not estimate effects of extreme temperature and heat waves on source water (tubewells), ponds and flies due to data sparsity.

<sup>c</sup> Weather classifications are as follows: No Rain (0 mm), Some Rain (<16.4 mm), Heavy Rain (≥16.4 and < 28.2 mm), Extreme Rain (≥ 28.2 mm), Below Median Temp (< 27.1°C), Above Median Temp (≥27.1 and < 30.2°C), Extreme Temp (≥ 30.2°C), No Heatwave (<30.9°C), Heatwave (≥ 30.19°C for 3 consecutive days).

**Figure S1: Daily precipitation and temperature, and monthly mean most probable number (MPN) of *E. coli* by sample type across the study period**



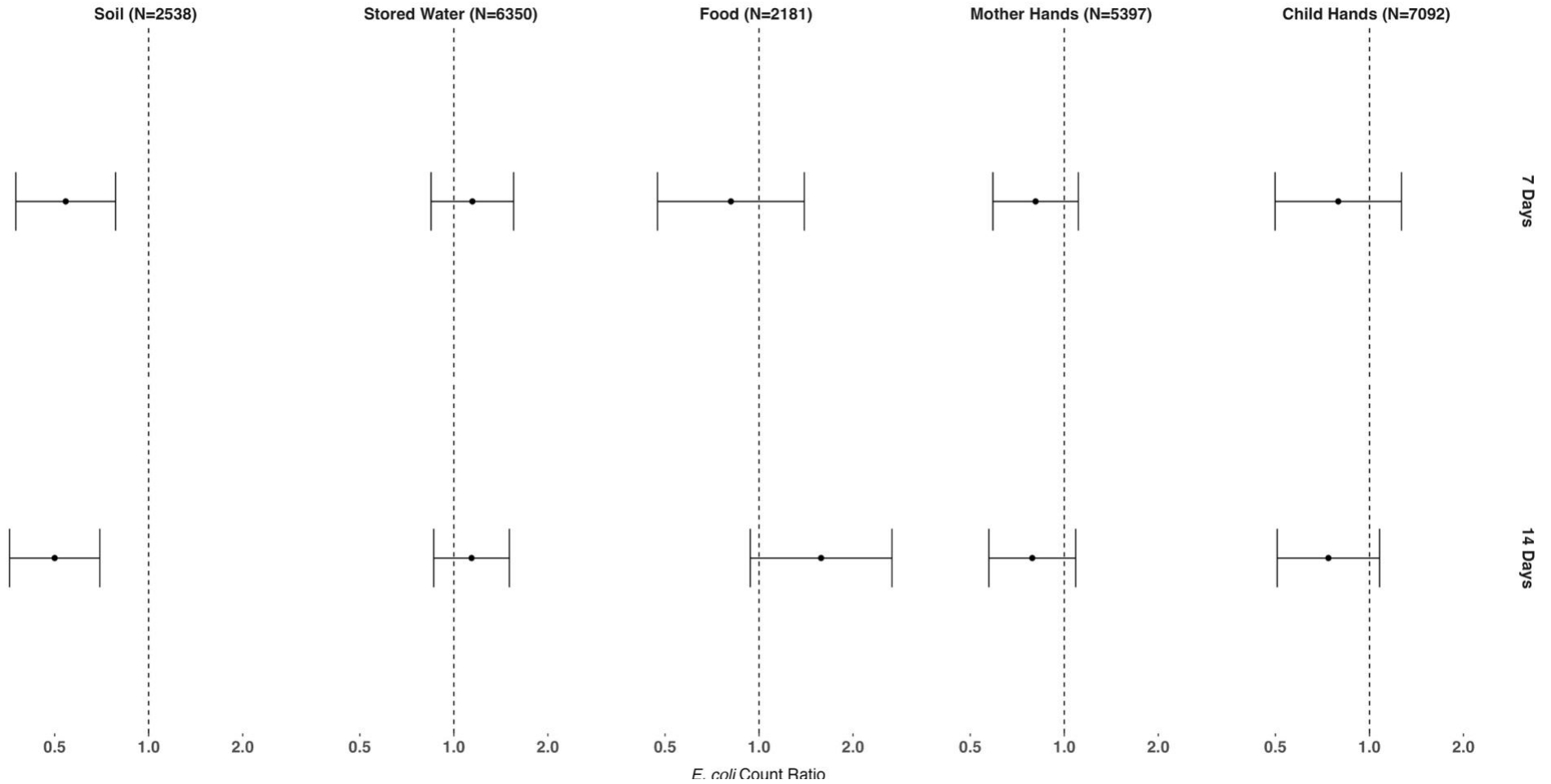
**Figure S2: Adjusted<sup>a</sup> *E. coli* count ratios by sample type associated with above-median and elevated temperature<sup>b</sup>, compared to below-median temperature, during different antecedent periods**



<sup>a</sup> All adjusted temperature models controlled for the following variables: Rolling mean rainfall for the same antecedent period, binary intervention variable (intervention or control), sex of index child, age of index child (in days), number of children under the age of 18 in the household, number of people in the compound, mother's age (in years), mother's educational status, food security category (using HFIAS scale), minutes to water source, household having improved walls, household having improved floors, household wealth quintile based on owned assets, number of cows, goats and chickens/ducks in the compound, source water origin from a tubewell. Food models included hours since stored food was prepared and stored drinking water models included covered storage container, narrow-mouth storage container, and hours water has been stored.

<sup>b</sup> Below Median Temperature ( $< 27.1^{\circ}\text{C}$ ), Above Median Temperature ( $\geq 27.1$  and  $< 30.2^{\circ}\text{C}$ ), Elevated Temperature ( $\geq 29.3^{\circ}\text{C}$ ).

Figure S3. Adjusted<sup>a</sup> *E. coli* count ratios by sample type<sup>b</sup> associated with heatwaves<sup>c</sup> within 7 and 14 days



<sup>a</sup> All adjusted temperature models controlled for the following variables: Rolling mean rainfall for the same antecedent period, binary intervention variable (intervention or control), sex of index child, age of index child (in days), number of children under the age of 18 in the household, number of people in the compound, mother’s age (in years), mother’s educational status, food security category (using HFIAS scale), minutes to water source, household having improved walls, household having improved floors, household wealth quintile based on owned assets, number of cows, goats and chickens/ducks in the compound, source water origin from a tubewell. Food models included hours since stored food was prepared and stored drinking water models included covered storage container, narrow-mouth storage container, and hours water has been stored.

<sup>b</sup> We could not estimate effects of heatwaves on source water (tubewells), ponds and flies due to data sparsity.

<sup>c</sup> Heatwave defined as daily maximum temperature values >95th percentile (30.9°C) for three consecutive days.