

1 **Dengue Virus Serotype 2 Cosmopolitan C Genotype Reemerges with a New Subclade in**
2 **Southwest Region of Bangladesh**

3
4 Md. Ali Ahasan Setu^{1,2}, Prosanto Kumar Das^{1,2}, Toukir Ahammed^{1,2}, Shuvo Saha^{2,3}, Adib
5 Hasan^{1,2}, Shishir Kumar P K^{1,2}, Samiran Das^{1,2}, Tanvir Ahamed^{2,4}, KM Amran Hossain⁵,
6 Hassan M. Al-Emran^{2,6}, M. Anwar Hossain² and Iqbal Kabir Jahid^{1,2}

7
8 ¹Department of Microbiology, Jashore University of Science and Technology

9 ²Genome Center, Jashore University of Science and Technology

10 ³Department of Genetic Engineering and Biotechnology, Jashore University of Science and
11 Technology

12 ⁴Department of Nutrition and Food Technology, Jashore University of Science and Technology

13 ⁵Department of Physiotherapy and Rehabilitation, Jashore University of Science and Technology

14 ⁶Department of Biomedical Engineering, Jashore University of Science and Technology

15

16

17 * Corresponding author: Iqbal Kabir Jahid, Department of Microbiology, Jashore University of
18 Science and Technology, Jashore-7408, Bangladesh.

19 E-mail: ikjahid_mb@just.edu.bd

20 Phone: +8801709818178

21

22

23

24

25

26

27

28

29

30

31

32 **Abstract**

33 In 2023, the Dengue virus (DENV) outbreak infected over 0.3 million cases and 1500 deaths in
34 Bangladesh. Although the the serotype and genotype data were unavailable. Our study conducted
35 serotyping and genomic surveillance in four districts of Southwest Bangladesh between
36 September and October 2023. The surveillance data from 2019 to 2023 extracted from the
37 Directorate General of Health Services in Bangladesh indicated a significant increase of Dengue
38 infections in 2023, particularly during September-November. The two-layered hypothesis
39 examination confirmed that, despite endemic months, 2023 dengue outbreak had a higher
40 morbidity rate compared to previous years (2019-2022) in Southwest of Bangladesh. Serotyping
41 and E gene sequence analysis of 25 randomly selected positive samples reveals that DENV-2
42 was the sole serotype circulating in this region during the study period. Genomic analysis
43 exposed a new subclade of DENV-2, classified under Cosmopolitan genotype within C clade,
44 distinct from previous years Bangladeshi variants until 2022. This subclade, possibly migrating
45 from India, might be emerged during COVID-19 pandemic years and exhibited higher morbidity
46 rates, thus challenging our existing mitigation strategies. This investigation provides valuable
47 insights for public health interventions and underscores the importance of continuous genomic
48 surveillance in managing Dengue outbreaks.

49

50 **Key words:** Dengue serotype 2, Bangladesh, New Subclade, Cosmopolitan C, Phylogenetic tree

51

52

53

54

55

56

57

58

59

60

61

62

63 **1. BACKGROUND**

64 Antigenically distinct Dengue virus serotypes (DENV-1 to 4) are further subdivided into
65 multiple genotypes based on the sequence variations in envelope (E) gene and named according
66 to their geographic region such as Asian I, Asian II, Asian/American, American, Cosmopolitan,
67 and sylvatic. However, some genotypes have spread all over the world and substantially
68 contributed to the global dengue burden and mortality. Cosmopolitan genotype of DENV-2 is the
69 most widespread and genetically heterogeneous of all (Yenamandra et al., 2021). In Bangladesh,
70 although sequence data is limited, DENV2 was prevalent in 2017 and 2018, whereas DENV3
71 was prevalent in 2019 until August 2022(Rahim et al. 2023). However, there was no report
72 published on circulating DENV serotypes/genotypes data about ongoing 2023 outbreak in
73 Bangladesh where more than 1500 died so far (MIS, 2023). Thus, monitoring of transmission
74 dynamics facing a challenge of implementation of effective DENV mitigation strategies. This
75 study endeavors to conduct genomic surveillance, providing valuable insights into the genotypes
76 in the southwest region of Bangladesh.

77

78 **2. METHODS AND MATERIALS**

79 The study conducted a cross-sectional survey of dengue positive cases between September and
80 October, 2023 in four districts of southwest Bangladesh, Jashore, Magura, Narail and Jhenadha.
81 The genome-sequencing were randomly selected positive samples (n=5) of each week during the
82 study period. Additionally, the study collected 30 months (2019-2023) surveillance data in those
83 districts retrieved from the Directorate general of health services (DGHS) to perform morbidity
84 trend analysis (https://dashboard.dghs.gov.bd/pages/heoc_dengue_v1.php).

85 The study was approved by the ethical review committee (ERC) of Jashore University of Science
86 and Technology (JUST), Bangladesh (ERC no: ERC/FBST/JUST/2021-62), and all experiments
87 were performed in the Genome Center, JUST according to the relevant guidelines and
88 regulations. During September - October 2023, 600 suspected dengue fever patients (both
89 hospitalized and outdoors) were selected as the study subjects. The participants were informed
90 about the study and interviewed through a questionnaire to obtain socio-demographic and health-
91 related data. After obtaining informed written consent from the subjects, left-over blood samples
92 were collected from the pathology lab of different government hospital and private diagnostic
93 centers. The blood samples were transported immediately to the Genome Center under stringent

94 cold-chain conditions. The sera were separated through centrifugation, and a portion of the sera
95 was stored at -40°C for further use. The other portion of the sera was used to perform Dengue
96 NS1 antigen test and viral RNA extraction. The NS1 antigen test was performed using the
97 Dengue NS1 Rapid Test Kit (Hangzhou Frenovo Biotech Co., Ltd., China). Viral RNA was
98 extracted using the QIAamp Viral RNA Mini Kit (Cat. No. 52906, Qiagen, Hilden, Germany).
99 After extraction, the DENV RNA serotyped using Molaccu Dengue Virus qPCR Detection Kit
100 (Cat. No. 01.09.21.16.32.02, Zybio Inc., China) in qTOWER³G RT-PCR instrument (Analytic
101 Jena, Germany) following manufacturer instructions. Afterward, cDNAs were prepared from the
102 DENV2 positive RNA using SuperScriptTM III First-Strand Synthesis kit (InvitrogenTM,
103 Thermo Fisher Scientific, USA). Two overlapping fragments of the DENV2 E gene was
104 amplified by using d2s1C- CC, DEN2 CC- 1R, DEN2 CC 1F, & d2a18-CC primers (Cruz et al.,
105 2016) and verified through electrophoresis. Sanger sequencing was performed in Applied
106 Biosystems SeqStudio genetic analyzer using BigDyeTM Terminator v3.1 as per the optimized
107 protocol (Islam et al., 2021). All forward and reverse ab1 files from a sequencing run were
108 simultaneously quality trimmed in Chromas and assembled in Unipro UGENE followed by
109 genotyping in GISAID DengueServer (<https://www.epicov.org/epi3/frontend#1754f5>).
110 Additional non-sylvatic DENV 2 genome sequences were retrieved from the publicly available
111 database (NCBI Virus) and aligned with the sequenced data of this study using MAFFT.
112 A total of 595 sequences of DENV-2 E gene (1485bp in length) were used for phylogenetic
113 analysis. We included 25 samples from the clinical study and 570 samples from NCBI virus
114 database (year 2000 to 2023). We took all five genotype (Asian-I; n= 4, Asian-II; n= 2, Asian-
115 American; n= 3, American; n= 1, Cosmopolitan; n= 585) for this analysis. Phylogenetic tree
116 were inferred from the multiple sequence alignment using maximum likelihood method
117 generated using IQ-TREE2. The best fit model TIN2+F+I+G4 was selected using ModelFinder
118 and an ultrafast bootstrap with 100000 replicates was calculated (Kato et al., 2002; Minh et al.,
119 2020). The phylogenetic tree was visualized using i-Tol (Letunic & Bork, 2021).
120 The cases were analyzed through Statistical package of social sciences (SPSS) version 20.
121 Normality test was performed by Kolmogorov–Smirnov test & Shapiro–Wilk test, and found a
122 non-normal distribution (P<.0001). Descriptive analysis was presented by median and
123 interquartile range (IQR). Our first hypothesis was the trend of seasonality of morbidity, we
124 performed Kruskal–Wallis H test; second hypothesis was increased morbidity at 2023 compared

125 to 2019-23, examined by Mann–Whitney U test (Faruk et al., 2022). The morbidity trend
126 analysis was presented through line graph and statistically tested by Mann-Kendall trend analysis
127 (Faruk et al., 2023). The alpha value of the study was $P < .05$.

128

129 **3. RESULTS**

130 The median morbidity cases of dengue between 2019 and 2022 were 34 (IQR 487), and in 2023
131 were 64 (IQR 2478). The highest median cases were observed in September (2129), October
132 (1134) and November (512). Figure 1(A) illustrates the overall cases between 2019 and 2023
133 according to the distribution of months. The seasonal increase of cases (September- November)
134 was found significant ($P < .05$) to be predicted as a factor. Further analysis found a significant
135 ($P < .05$) mean difference in yearly cases in 2023 compared to 2019-2022. Finally, a Mann-
136 Kendall trend analysis (Faruk et al., 2022) between monthly cases of 2019- 2022 versus 2023
137 and found a statistically significant ($P < .05$) trend (Figure 1B) of increased cases in 2023
138 compared to 2019-2022.

139 All 595 sequences used in this study were genotyped using GISAID Dengue server GISAID. All
140 of 25 sequences of this study clustered together in a sub-clade C of Cosmopolitan genotype as
141 showed in Figure 2. DENV-2 Bangladeshi variants from 2006 to 2017 ($n = 16$) were
142 Cosmopolitan within B clade, from 2017 to 2018 ($n = 55$) were Cosmopolitan C clade, whereas
143 in 2017 the variants were in both Clade B and Clade C (Figure 2). Previous study showed that
144 Bangladesh had no cosmopolitan sequences from 2020 to 2022 (Hossain et al., 2023). The
145 Bangladesh 2023 subclade, we found in this study were Cosmopolitan C clade. This Bangladeshi
146 2023 subclade of Cosmopolitan C are genetically distant from previous Bangladeshi variants.

147

148 **4. DISCUSSION**

149 Dengue causes a wide range of clinical manifestations, from asymptomatic or mild fever to
150 potentially fatal diseases, such as dengue hemorrhagic fever or dengue shock syndrome. In
151 response to dengue infection, cytokines such as IFN $\alpha\beta$, IL-6, IL-8, MIF, TNF α , IFN γ , IL 10,
152 and VEGF can regulate viral replication and direct immune cells to the infection site. If this
153 response fails, viremia develops and an amplified cytokine response leads to disease severity and
154 affects other organs (Srikiatkachorn et al., 2017). Secondary infection with a heterotypic

155 serotype or genotype may elicit a prompt immune response due to the antibody-dependent
156 enhancement (ADE) and increase disease severity (Al-Emran et al., 2023). Dengue outbreaks in
157 Bangladesh were caused by several serotypes and genotypes in recent years including during the
158 Covid-19 pandemic (Al-Emran et al.,
159 https://papers.ssrn.com/sol3/papers.cfm?abstract_id=4401701.; Rahim et al., 2023; Sarkar et al.,
160 2023). The two-layered hypothesis examination proved that, despite endemic months, 2023
161 dengue outbreak had a higher morbidity rate compared to previous years (2019-2022) in
162 Southwest of Bangladesh. In 2023, , more than 0.3 million cases were infected and 1500 people
163 died in all over Bangladesh (MIS, 2023). Our study that the dengue epidemic in 2023 was caused
164 by DENV-2 Cosmopolitan genotype that evolved as a new subclade among C clade. The
165 outbreaks of 2017 and 2018 in Bangladesh were also caused by DENV-2 Cosmopolitan
166 genotype within B and C clade (Hossain et al., 2023), although the 2023 subclade were not
167 resembled to any previous Bangladeshi C clade variants (2017, 2018 and 2019), suggesting a
168 shift of new subclade. This 2023 subclade was more similar with India (n = 12, 2018-2021),
169 China (n =1, 2022), Indonesia (n =1, 2020), Thailand (n =2, 2020), and USA (n = 3, 2023)
170 (Figure 2). The study area is connected with Petropole of India and Benaople the biggest land
171 port of Bangladesh. Therefore, we assumed that this sub clade might migrate from India which
172 had survival advantages over time. The possibility of cross-border transmission, as the isolates
173 identified in our study closely aligned with Indian isolates identified in 2022, showing a robust
174 bootstrap support of 99%. Our study area shares multiple borders with India, including the
175 Benapole Land Port, the largest land port in Bangladesh.

176 All those variants were emerged during COVID-19 pandemic. Another study of our research
177 group reported that the new variant might emerge from the coinfection cases with COVID-19
178 and causing more severity and mortality (Al-Emran et al., n.d.
179 https://papers.ssrn.com/sol3/papers.cfm?abstract_id=4401701). The emergence of new subclade
180 took place due to the high rate of viral replication and mutation, combined with selective
181 pressure from the host immune responses and coinfection with other viruses. The emergence of
182 new subclade and their potential impact on the ongoing outbreak further highlights the need for
183 the research on coinfection and their potential effects on viral evolution and pathogenicity, and
184 the dynamics of the cross-border spread.

185

186
187
188
189
190
191
192
193
194
195
196
197
198
199
200
201
202
203
204
205
206
207
208
209
210
211
212
213
214

AUTHOR CONTRIBUTIONS

Conceptualization: M.A.A.S., I.K.J.; *Experimental Methodology:* M.A.A.S., I.K.J., P.K.D., T.A., S.S.; *Investigation:* M.A.A.S., M.A.H., I.K.J.; *Resources:* M.A.H., I.K.J.; *Sample Collection:* P.K.D., T.A., S.S., A.H., S.K.P.K., S.D., Tanvir. A.; *Experimental Analysis and Interpretation:* M.A.A.S., P.K.D., T.A., S.S. A.H., S.K.P.K.; *Validation:* I.K.J., M.A.H.; *Statistical Analysis:* K.A.H.; *Writing, Original draft preparation:* M.A.A.S., P.K.D., I.K.J.; *Writing, Review and Editing:* I.K.J., H.A.E.; *Funding Acquisition:* I.K.J., M.A.H. All authors have read and agreed to the published version of the manuscript.

ACKNOWLEDGMENTS

This study was supported by the Jashore University of Science and Technology grant no: 23-*FoBST-06* though University Grant Commission, Bangladesh. Funding source has no role for design, collection the data, analysis and approval of manuscript.

CONFLICTS OF INTEREST

The authors declare no conflict of interest.

DATA AVAILABILITY STATEMENT

Dengue type 2 gene E that had been obtained from Sanger sequencing had been deposited in the GSAID (<https://gisaid.org/>). Other genetic data used in the study have been collected from NCBI (<https://www.ncbi.nlm.nih.gov/>). Accession number of all sequence data are available in supplementary table S1.

215

216 **REFERENCE**

217

- 218 1. Al-Emran, H. M., Rahman, F., Sarkar, L., Das, P. K., Mondol, P., Yesmin, S., Sultana, P.,
219 Ahammed, T., Parvez, R., & Hasan, M. S. (n.d.). *Emergence of SARS-CoV-2 Variants of*
220 *Concern Induced by Dengue Viral Coinfections.*
- 221 2. Al-Emran, H. M., Rahman, S., Hasan, M. S., Ul Alam, R., Islam, O. K., Anwar, A.,
222 Jahid, M. I. K., & Hossain, A. (2023). Microbiome analysis revealing microbial
223 interactions and secondary bacterial infections in COVID-19 patients comorbidly
224 affected by Type 2 diabetes. *Journal of Medical Virology*, 95(1), e28234.
- 225 3. Cruz, C. D., Torre, A., Troncos, G., Lambrechts, L., & Leguia, M. (2016). Targeted full-
226 genome amplification and sequencing of dengue virus types 1–4 from South America.
227 *Journal of Virological Methods*, 235, 158–167.
- 228 4. Faruk, M. O., Jannat, S. N., & Rahman, M. S. (2022). Impact of environmental factors on
229 the spread of dengue fever in Sri Lanka. *International Journal of Environmental Science*
230 *and Technology*, 19(11), 10637–10648.
- 231 5. Hossain, M.S., Noman, A.A., Mamun, S.A.A. *et al.* Twenty-two years of dengue outbreaks in
232 Bangladesh: epidemiology, clinical spectrum, serotypes, and future disease risks. *Trop Med*
233 *Health* 51, 37 (2023). <https://doi.org/10.1186/s41182-023-00528-6>
- 234 6. Islam, M. T., Alam, A. S. M. R. U., Sakib, N., Hasan, M. S., Chakrovarty, T., Tawyabur,
235 M., Islam, O. K., Al-Emran, H. M., Jahid, M. I. K., & Anwar Hossain, M. (2021). A
236 rapid and cost-effective multiplex ARMS-PCR method for the simultaneous
237 genotyping of the circulating SARS-CoV-2 phylogenetic clades. *Journal of Medical*
238 *Virology*, 93(5), 2962–2970.
- 239 7. Katoh, K., Misawa, K., Kuma, K., & Miyata, T. (2002). MAFFT: a novel method for
240 rapid multiple sequence alignment based on fast Fourier transform. *Nucleic Acids*
241 *Research*, 30(14), 3059–3066. <https://doi.org/10.1093/nar/gkf436>
- 242 8. Letunic, I., & Bork, P. (2021). Interactive Tree Of Life (iTOL) v5: an online tool for
243 phylogenetic tree display and annotation. *Nucleic Acids Research*, 49(W1), W293–W296.
244 <https://doi.org/10.1093/nar/gkab301>
- 245 9. Minh, B. Q., Schmidt, H. A., Chernomor, O., Schrempf, D., Woodhams, M. D., von

- 246 Haeseler, A., & Lanfear, R. (2020). IQ-TREE 2: New Models and Efficient Methods for
247 Phylogenetic Inference in the Genomic Era. *Molecular Biology and Evolution*, *37*(5),
248 1530–1534. <https://doi.org/10.1093/molbev/msaa015>
- 249 10. MIS, G. of the P. republic bangladesh M. I. S. (2023). *Health Emergency Operation*
250 *Center & Control Room Dengue Press Release - 23 November 2023* (Issue November).
251 <https://old.dghs.gov.bd/index.php/bd/home/5200-daily-dengue-status-report>
- 252 11. Rahim, R., Hasan, A., Phadungsombath, J., Hasan, N., Ara, N., Biswas, S. M., Nakayama,
253 E. E., Rahman, M., & Shioda, T. (2023). Genetic Analysis of Dengue Virus in Severe and
254 Non-Severe Cases in Dhaka, Bangladesh, in 2018–2022. *Viruses*, *15*(5), 1144.
- 255 12. Sarkar, M. M. H., Rahman, M. S., Islam, M. R., Rahman, A., Islam, M. S., Banu, T. A.,
256 Akter, S., Goswami, B., Jahan, I., & Habib, M. A. (2023). Comparative phylogenetic
257 analysis and transcriptomic profiling of Dengue (DENV-3 genotype I) outbreak in 2021
258 in Bangladesh. *Virology Journal*, *20*(1), 127.
- 259 13. Srikiatkachorn, A., Mathew, A., & Rothman, A. L. (2017). Immune-mediated cytokine
260 storm and its role in severe dengue. *Seminars in Immunopathology*, *39*(5), 563–574.
261 <https://doi.org/10.1007/s00281-017-0625-1>
- 262 14. Yenamandra, S. P., Koo, C., Chiang, S., Lim, H. S. J., Yeo, Z. Y., Ng, L. C., &
263 Hapuarachchi, H. C. (2021). Evolution, heterogeneity and global dispersal of
264 cosmopolitan genotype of Dengue virus type 2. *Scientific Reports*, *11*(1), 13496.

265

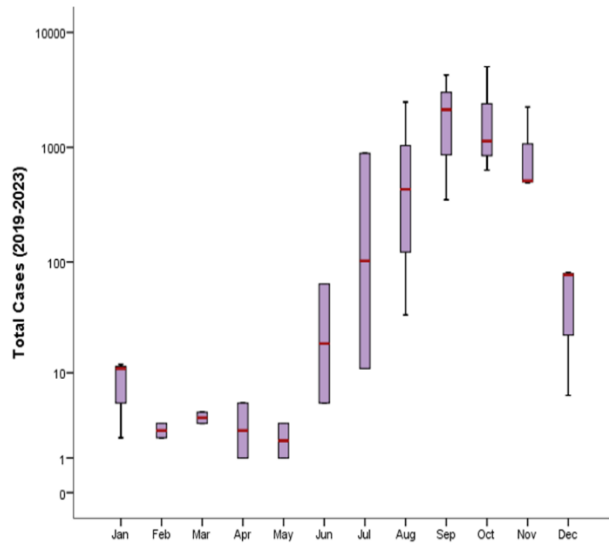
266

267 **Figure 1:** (A) Seasonal variation of Dengue cases of southern part of Bangladesh (2019-2023);
268 (B) Month-wise Mann-Kendall trend analysis (2019-2022 versus 2023) (Data source:
269 https://dashboard.dghs.gov.bd/pages/heoc_dengue_v1.php)

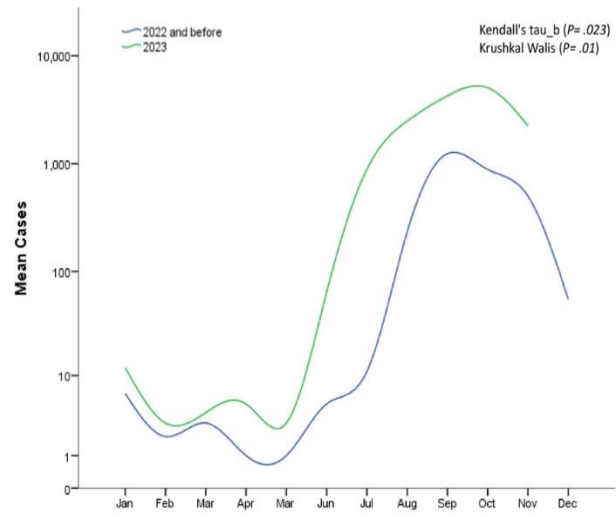
270 **Figure 2:** A maximum likelihood phylogenetic tree was constructed using the W-IQ-TREE
271 program in ModelFinder with ultrafast bootstrapping (UFBoot) and 100000 replicates.
272 TIN2+F+I+G4 was selected as the best-fit model. The dataset includes DENV-2 E-gene
273 sequences obtained in the current study, highlighted in green for the year 2023. Additionally,
274 DENV-2 sequences from Bangladesh spanning the years 2000 to 2022 are represented in pink.
275 The cosmopolitan clade (A, B, and C) is demarcated by arc and corresponding colors. Each
276 sample name comprises the accession number, country, and reported year of the sequence.

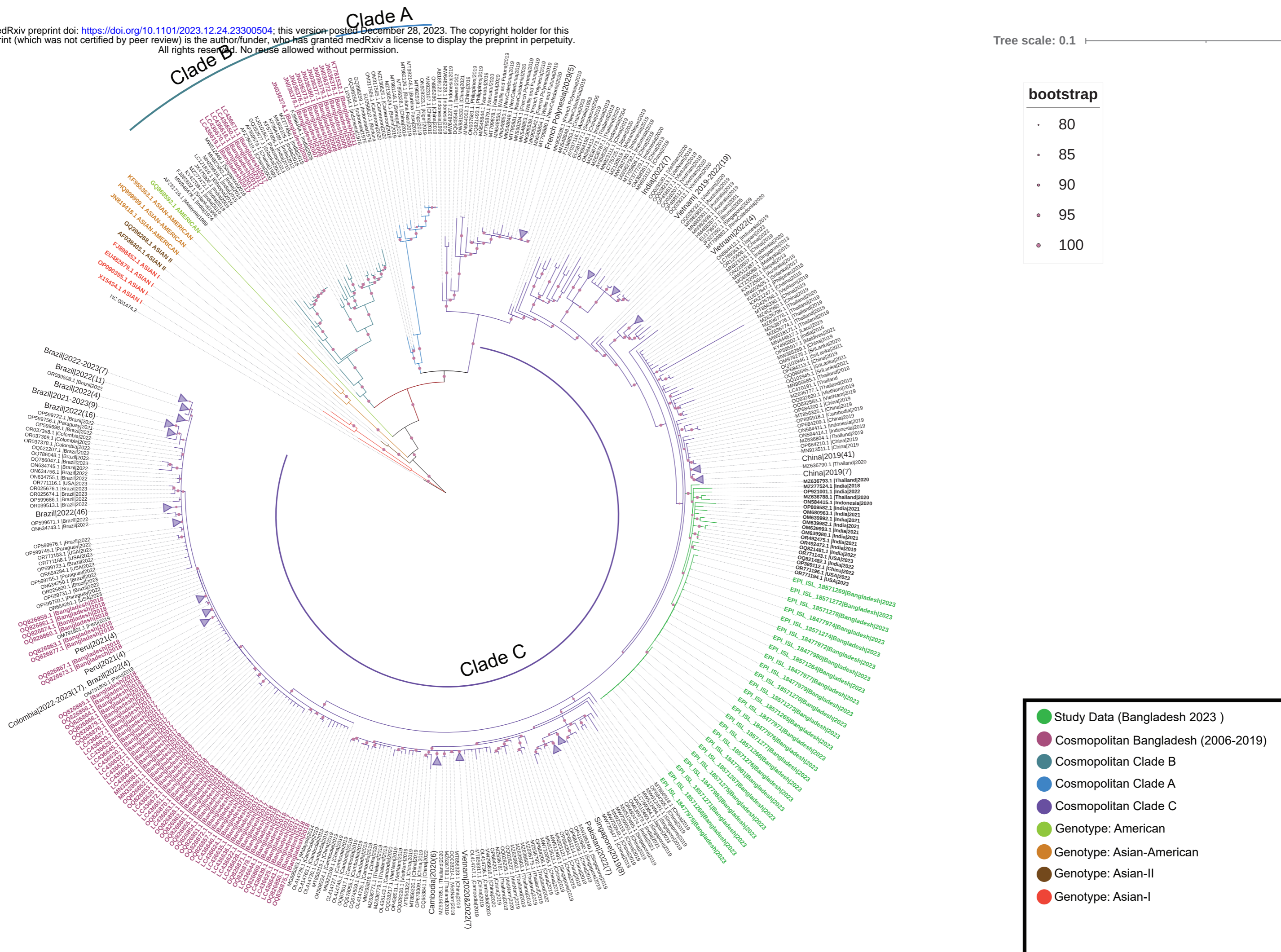
277 Branches on the phylogenetic tree are annotated with UFBoot support values, with values
278 exceeding 90% being highlighted.

A)



B)





bootstrap

- 80
- 85
- 90
- 95
- 100

- Study Data (Bangladesh 2023)
- Cosmopolitan Bangladesh (2006-2019)
- Cosmopolitan Clade B
- Cosmopolitan Clade A
- Cosmopolitan Clade C
- Genotype: American
- Genotype: Asian-American
- Genotype: Asian-II
- Genotype: Asian-I