

Supplementary Material

Antibodies to *Aedes aegypti* D7L salivary proteins as a new serological tool to estimate human exposure to *Aedes* mosquitoes.

Sophana Chea^{1†}, Laura Willen^{2†}, Sreynik Nhek¹, Piseth Ly¹, Kristina Tang², James Oristian², Roberto Salas-Carrillo², Aiyana Ponce², Paola Carolina Valenzuela Leon², Dara Kong¹, Sokna Ly², Ratanak Sath², Chanthap Lon^{1,2}, Rithea Leang^{3,4}, Rekol Huy³, Christina Yek^{1,2}, Jesus G. Valenzuela², Eric Calvo², Jessica E. Manning^{1,2}, Fabiano Oliveira^{1,2*}.

¹ International Center of Excellence in Research, National Institute of Allergy and Infectious Diseases, Phnom Penh, Cambodia

² Laboratory of Malaria and Vector Research, National Institute of Allergy and Infectious Diseases, National Institutes of Health, Bethesda, MD, USA

³ National Center for Parasitology, Entomology, and Malaria Control, Ministry of Health, Phnom Penh, Cambodia

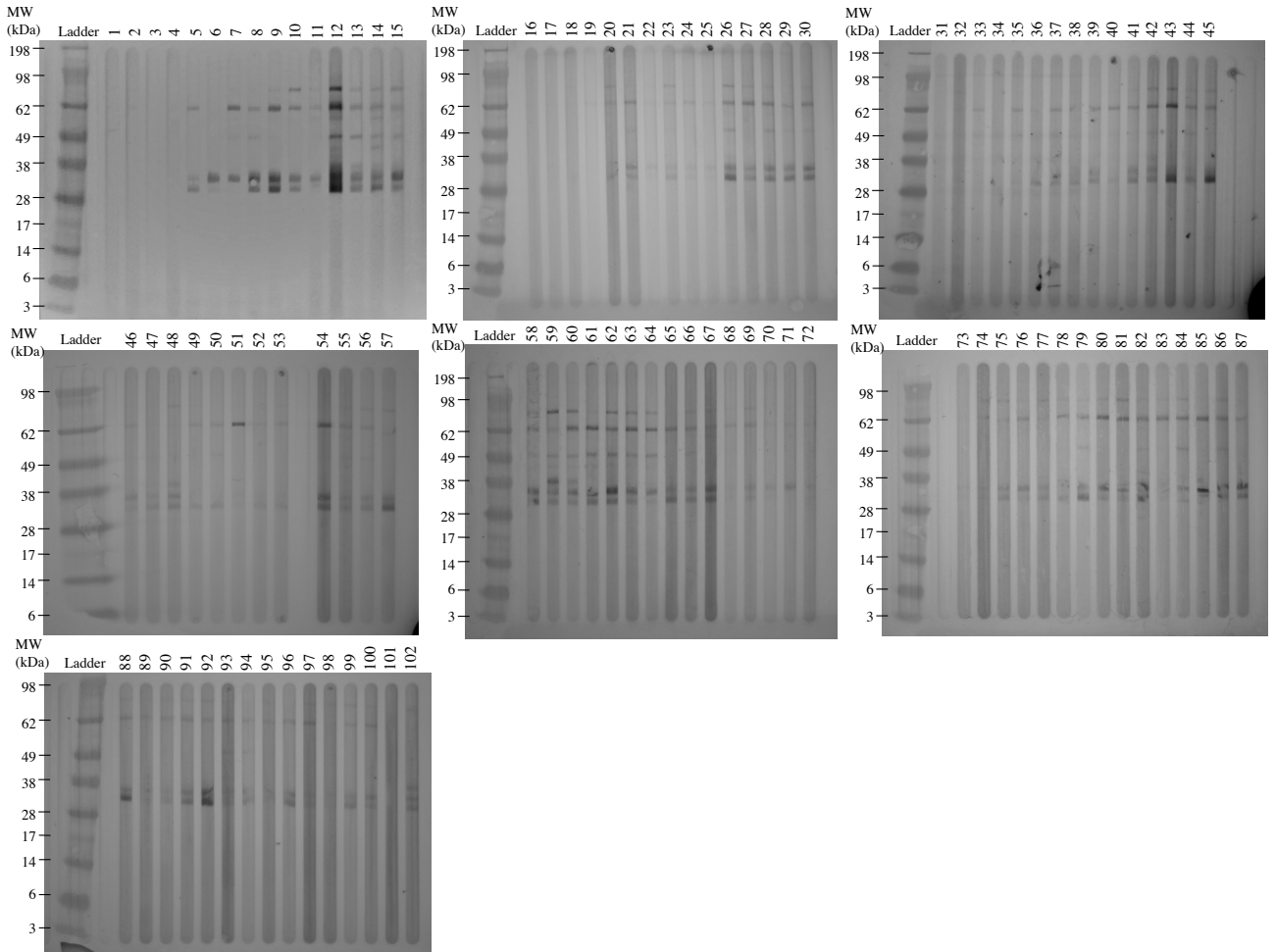
⁴ National Dengue Control Program, Ministry of Health, Phnom Penh, Cambodia

Sophana Chea^{1†} and Laura Willen^{2†}: These authors contributed equally to this work and share first authorship.

Correspondence: Fabiano Oliveira, loliveira@nih.gov

27 1. Supplementary Figures and Tables

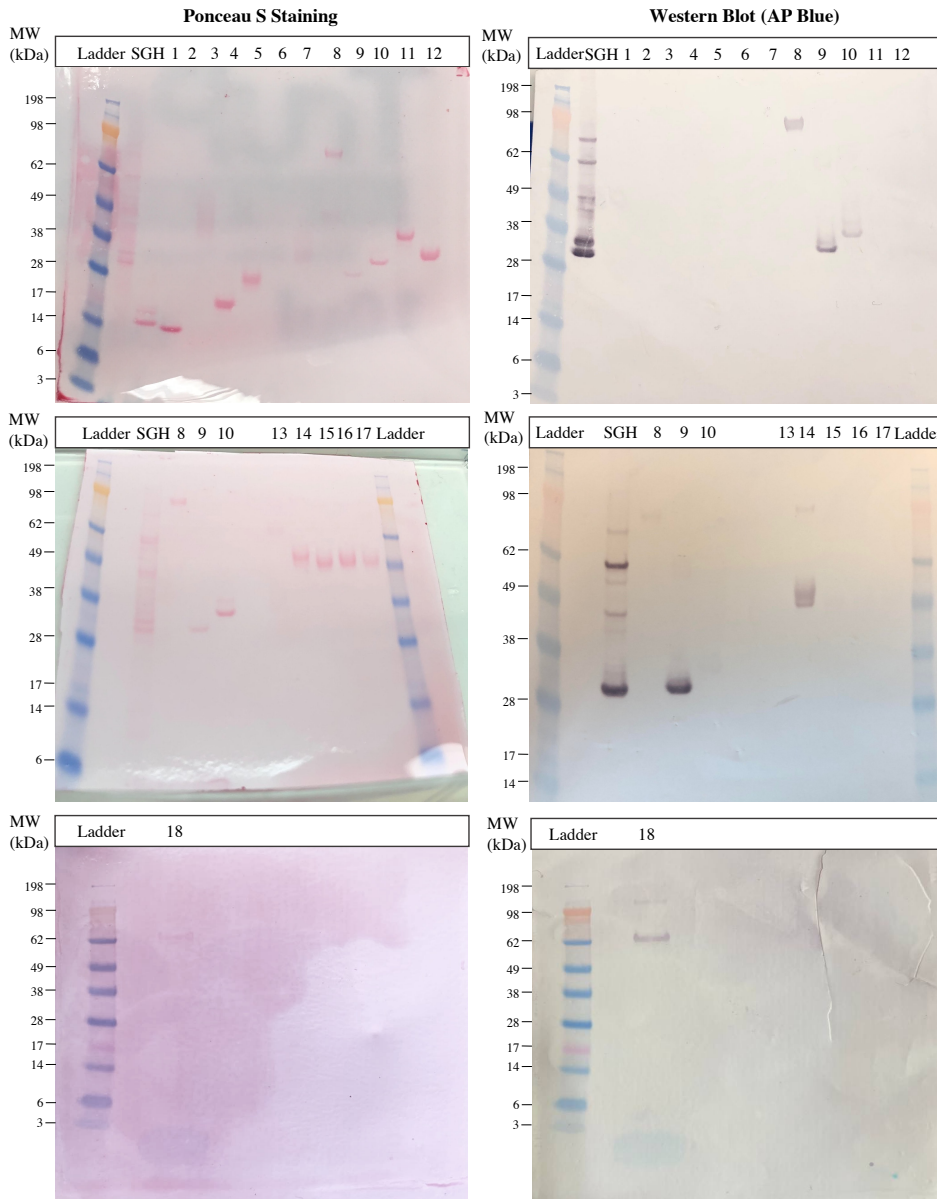
28 a. Supplementary Figures



29

30 **Supplementary Figure 1. Western blots for reactivity of Cambodian sera with whole salivary gland**
31 **homogenate of *Ae. aegypti*.** Each lane represents the serum reactivity of one Cambodian individual with
32 SGH. MW: Molecular Weight; SGH: Salivary Gland Homogenate.

33



Lane number	Protein Name	Estimated MW (kDa)
1	NIH435-36	20.05
2	NIH435-8	20.6
3	NIH435-4	21
4	NIH435-29	21.16
5	NIH435-35	21.25
6	Aegyptin	30
7	NIH435-32	36.4
8	NIH435-27	36.7
9	AeD7L1	37
10	AeD7L2	37
11	NIH435-31	38.721
12	NIH435-24	39.13
13	NIH435-16	20.05
14	NIH435-23	20.6
15	NIH435-19	21
16	NIH435-6	21.16
17	NIH435-21	21.25
18	AeApyrase	61.36

34

35

36

37

38

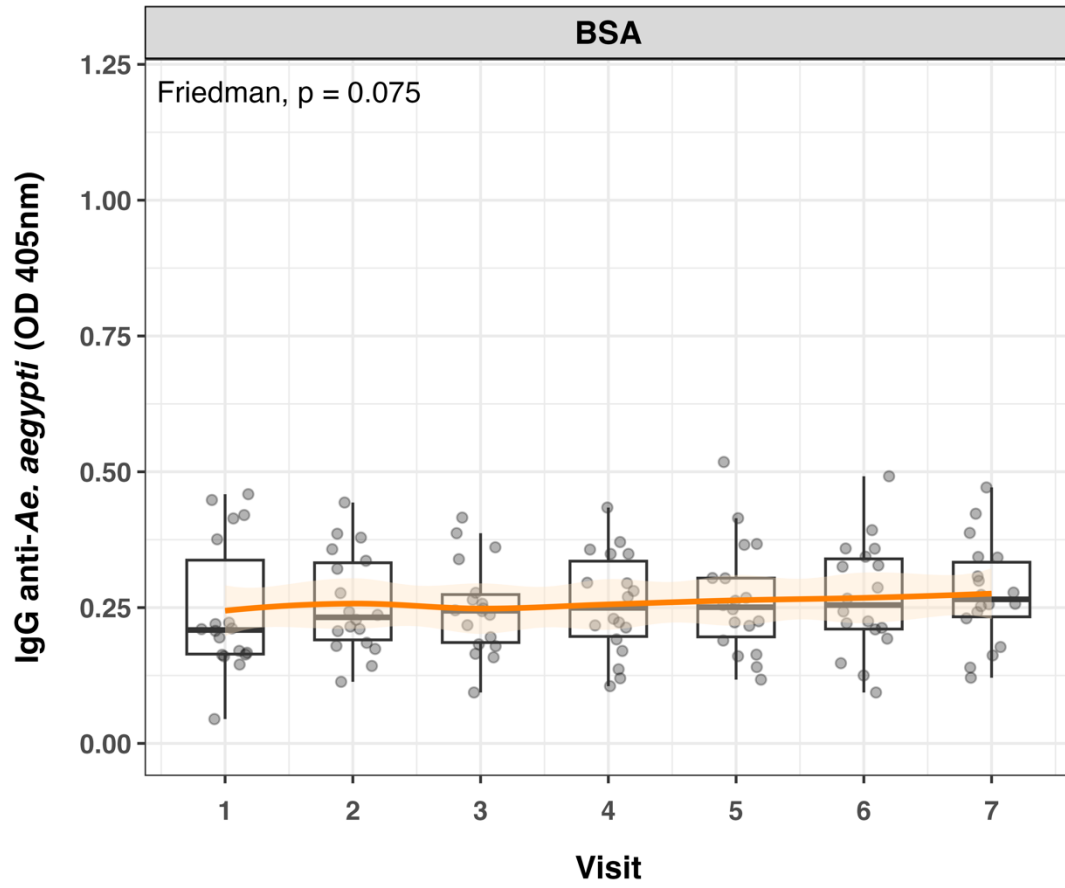
39

40

41

42

Supplementary Figure 2. Ponceau staining and Western Blot of 17 recombinantly expressed *Ae. aegypti* salivary proteins. Protein names and their estimated molecular weight are shown in the table. MW: Molecular Weight; SGH: Salivary Gland Homogenate.



44
45
46

Supplementary Figure 3. No significant differences were observed for the Ab responses against BSA during the wet and dry seasons.

47

48 2. Supplementary Tables

49 **Supplementary Table 1. Correlation coefficients, *p* values and confidence intervals for Pearson and Spearman correlation between SGH and all**
 50 **tested combinations of *Ae. aegypti* recombinant salivary proteins. BSA: Bovine Serum Albumin; CI: Confidence Interval.**

Recombinant protein	Pearson Correlation			Spearman Correlation		
	Coefficient (r)	<i>p</i> value	0.95 CI	Coefficient (r _s)	<i>p</i> value	0.95 CI
AeD7L1+2	0.91	4.26e-049	0.87 – 0.94	0.92	4.96e-52	0.89 – 0.94
AeD7L1	0.82	8.75e-32	0.75 – 0.87	0.84	1.00e-34	0.78 – 0.89
AeD7L2	0.76	5.93e-25	0.67 – 0.83	0.82	1.70e-31	0.75 – 0.87
AeApyrase + AeD7L1+2 + NIH-27 + NIH-23	0.81	8.24e-31	0.74 – 0.86	0.87	7.95e-41	0.83 – 0.91
AeApyrase + AeD7L1+2 + NIH-27	0.84	2.12e-34	0.78 – 0.88	0.90	8.98e-48	0.87 – 0.93
AeApyrase + AeD7L1+2 + NIH-23	0.79	1.46e-27	0.71 – 0.84	0.85	4.05e-37	0.80 – 0.90
AeApyrase + NIH-23 + NIH-27	0.72	1.68e-21	0.625 – 0.7957	0.78	2.03e-27	0.71 – 0.84
AeD7L1+2 + NIH-27 + NIH-23	0.90	1.20e-45	0.86 – 0.93	0.93	1.03e-56	0.91 – 0.95
AeD7L1+2 + NIH-27	0.90	3.73e-46	0.86 – 0.93	0.93	1.14e-56	0.91 – 0.95
BSA	0.17	0.051	-0.001 – 0.34	0.15	0.10	-0.03 – 0.31

Supplementary Table 2. Hazard ratios, confidence intervals and *p* values per risk factor tested for dengue seroconversion using Cox regression. *Aedes aegypti* exposure was estimated using anti-SGH antibody levels. SGH: Salivary Gland Homogenate; HR: Hazard Ratio; CI: Confidence interval.

Risk factor	HR [CI]	<i>p</i>
<i>Aedes aegypti</i> SGH salivary protein antibodies (ref: low)		
<i>High</i>	1.3 [0.94-1.79]	0.112
Sex (ref: female)		
<i>Male</i>	1.04 [0.78-1.41]	0.777
Age (per year)	1.08 [0.98-1.19]	0.132
Educational status (ref: in school)		
<i>Not in school</i>	0.83 [0.53-1.29]	0.402
Socioeconomic class (ref: Lower/ very poor)		
<i>Middle/upper</i>	0.99 [0.67-1.45]	0.950
No. of domestic water containers at home	0.10 [0.94-1.06]	0.927
No. of toilets in the home	1.18 [0.97-1.42]	0.094
Use of bednets (ref: rarely/never)		
<i>Regularly/ all of the time</i>	0.89 [0.57-1.39]	0.610
Use of insecticide spray (ref: does not use)		
<i>Uses insecticide spray</i>	0.69 [0.50-0.94]	0.020
Use of larvicide (ref: applies larvicide to water)		
<i>Does not apply larvicide to water</i>	1.22 [0.81-1.83]	0.349
How often mosquito coils burned (ref: daily/often)		
<i>Never</i>	1.28 [0.91-1.79]	0.154
<i>Sometimes/rarely (1-3 times/wk)</i>	0.75 [0.49-1.16]	0.195

Supplementary Table 3. Hazard ratios, confidence intervals and *p* values per risk factor tested for dengue seroconversion using Cox regression. *Aedes aegypti* exposure was estimated using anti-D7L1+2 antibody levels. HR: Hazard Ratio; CI: Confidence interval.

Risk factor	HR [CI]	<i>p</i>
<i>Aedes aegypti</i> D7L1+2 salivary protein antibodies (ref: low)		
<i>High</i>	1.2 [1.4-0.9]	0.341
Sex (ref: female)		
<i>Male</i>	1 [2.4-0.8]	0.872
Age (per year)	1.1 [1.2-1]	0.157
Educational status (ref: in school)		
<i>Not in school</i>	0.8 [1.5-0.5]	0.391
Socioeconomic class (ref: Lower/ very poor)		
<i>Middle/upper</i>	1 [2.5-0.7]	0.914
No. of domestic water containers at home	1 [2.6-0.9]	0.972
No. of toilets in the home	1.2 [1.1-1]	0.095
Use of bednets (ref: rarely/never)		
<i>Regularly/ all of the time</i>	0.9 [1.9-0.6]	0.617
Use of insecticide spray (ref: does not use)		
<i>Uses insecticide spray</i>	0.7 [1-0.5]	0.020
Use of larvicide (ref: applies larvicide to water)		
<i>Does not apply larvicide to water</i>	1.2 [1.4-0.8]	0.285
How often mosquito coils burned (ref: daily/often)		
<i>Never</i>	1.3 [1.2-0.9]	1.365
<i>Sometimes/rarely (1-3 times/wk)</i>	0.7 [1.2-0.5]	<0.0001