

1 **Title page**

2 **Immunogenicity and Safety of a 14-valent pneumococcal polysaccharide conjugate vaccine**
3 **(PNEUBEVAX 14™) administered to 6-8 weeks old healthy Indian Infants: A single blind,**
4 **randomized, active-controlled, Phase-III study**

5 Ramesh V Matur¹, Subhash Thuluva¹, Subbareddy Gunneri¹, Vijay Yerroju¹, Rammohan reddy
6 Mogulla¹, Kamal Thammireddy¹, Piyush Paliwal¹, Niranjana S Mahantshetty², Mandyam Dhati
7 Ravi³, S. Prashanth⁴, Savita Verma⁵, Jai Prakash Narayan⁶.

8 **Affiliations:** ¹Biological E Limited, 18/1&3, Azamabad, Hyderabad – 500 020, Telangana,
9 India; ²KLES Dr. Prabhakar Kore Hospital & Medical Research Centre, Department of
10 Pediatrics, Belgaum, Karnataka, India.; ³JSS Hospital, Department of Pediatrics, Mysore,
11 Karnataka India; ⁴Cheluvamba Hospital, Mysore Medical College & Research Institute, Dept. of
12 Paediatrics, Mysore, Karnataka, India; ⁵Pandit Bhagwat Dayal Sharma Post Graduate Institute of
13 Medical Sciences & Hospital, Department of Pharmacology, Rothak, Haryana, India; ⁶Jawahar
14 Lal Nehru Medical College, Kala Bagh, Rajasthan, India.

15 **Corresponding Author Name:** Ramesh V Matur, Biological E Limited, 18/1&3, Azamabad,
16 Hyderabad – 500 020, Telangana, India,

17 **E-mail:** Ramesh.Matur@biologicale.com

18

19 **Funding Support:** The study was funded by Biological E Limited, 18/1&3, Azamabad,
20 Hyderabad – 500020, Telangana, India

21

22 **ABSTRACT**

23 **Background:** Introduction of pneumococcal conjugate vaccines (PCV) reduced the cases of
24 pneumococcal disease at global level. However, there is an increase in clinical and economic
25 burden of PD from non-PCV serotypes, particularly in pediatric and elder population. In this
26 study, immunogenicity and safety of the BE's 14-valent PCV (PNEUBEVAX 14TM; BE-PCV-
27 14) containing two additional epidemiologically important serotypes (22F and 33F) in
28 comparison to PCV-13 was evaluated in infants.

29 **Methods:** This is a pivotal phase-3 single blind randomized active-controlled study conducted at
30 12 sites across India in 6-8 weeks old healthy infants in 6-10-14 weeks dosing schedule to assess
31 immunogenic non-inferiority and safety of a candidate BE-PCV-14. In total, 1290 infants were
32 equally randomized to receive either BE-PCV-14 or PCV-13. Solicited local reactions and
33 systemic events, adverse events (AEs), serious AEs (SAEs) and medically attended AEs
34 (MAAEs) were recorded. Immunogenicity was assessed by measuring anti-PnCPS IgG
35 concentration and functional antibody titers by opsonophagocytic activity (OPA), one month
36 after completing three dose schedule. Cross protection to serotype 6A offered by serotype 6B
37 was also assessed in this study.

38 **Findings:**

39 The safety profile of BE-PCV-14 was comparable to PCV-13 vaccine. Majority of reported AEs
40 were mild in nature and no severe or serious AEs were reported. Primary immunogenicity
41 objective was met for all 14 serotypes. For the twelve common serotypes non-inferiority to those
42 12 serotypes in PCV-13 was met. Additional serotypes in BE-PCV-14 (22F and 33F) also met NI
43 criteria as defined by WHO TRS-977. A significant seroconversion, about 69% for serotype 6A
44 was observed even though this antigen was not present in BE-PCV-14. This indicates that

45 serotype 6B of BE-PCV-14 cross protects serotype 6A. BE-PCV-14 also elicited comparable
46 serotype specific functional OPA immune responses to all the serotypes in PCV-13.

47 **Interpretations:** BE-PCV-14 was found to be safe and induced robust and functional serotype
48 specific immune responses to all 14 serotypes. All serotype-specific IgG responses were
49 comparable to those in PCV-13. These findings suggest that BE-PCV-14 can be safely
50 administered to infants and achieve protection against pneumococcal disease caused by serotypes
51 covered in the vaccine.

52 The study was prospectively registered with clinical trial registry of India-
53 CTRI/2020/02/023129

54 **KEY WORDS:** Infants, Pneumococcal disease, Conjugate vaccine, Serotype, Pneumococcal
55 capsular polysaccharide, Opsonophagocytic activity.

56

57

58

59

60

61

62

63

64

65

66

67 INTRODUCTION

68 *Streptococcus pneumoniae* is a gram positive bacterium, causing morbidity and mortality
69 globally in children under 5 years, adults above 50 years and in individuals with comorbidities. It
70 manifests a variety of invasive or noninvasive diseases such as pneumonia, otitis media,
71 nasosinusitis, bacteremia and meningitis ^{1,2}. Most of the deaths are caused by invasive
72 pneumococcal disease (IPD) with reported >300000 deaths worldwide in children under 5 years
73 every year due to pneumonia or meningitis ³. In developing countries, case fatality rates may be
74 as high as 50% for meningitis and up to 20% for septicemia. As per a global population-based
75 model in 2015 and as per WHO data, case fatality rates under 5 years' is the highest in India
76 followed by Pakistan, Bangladesh, Sri Lanka and Indonesia with reported incidences over
77 200/100,000 population ^{4,5}. Although there are more than 95 identified serotypes of *S*
78 *pneumoniae*, few serotypes are responsible for causing the disease ⁶. In addition, in more than
79 30% of cases, pneumococcal bacteria are resistant to one or more antibiotics ⁷.

80 A 23-valent, unconjugated pneumococcal polysaccharide vaccine (PPSV23; Pneumovax® 23,
81 Merck and Co., Inc., NJ) provides only transient protection as it elicits T-cell independent
82 immune responses⁸. Pneumococcal polysaccharide-protein conjugate vaccines (PCVs) 7- and 13-
83 valent (PCV-7; Prevenar 7®; PCV-13; Prevenar 13®; Pfizer, New York), were able to induce T-
84 cell dependent immune response against respective serotypes and generate robust functional
85 antibody responses providing long-term protection against IPD across different age groups ⁹⁻¹¹.
86 Introduction of PCVs substantially reduced the burden of IPD worldwide in all age groups ¹².
87 Despite these reductions, one-fourth to one-third of the *S. pneumoniae* serotypes causing IPD are
88 not covered by currently available PCVs and these serotypes bring about a significant unmet
89 medical need ¹³⁻¹⁵. A study by Balsells, et al. ¹⁶ reported that 42.2% of childhood IPD cases were

90 caused by non-vaccine serotypes. So, it is important to include additional serotypes to minimize
91 the burden of IPD. Biological E Limited developed a PCV covering 14 different serotypes
92 (PNEUBEVAX 14TM) including 2 serotypes (22F and 33F) that are not included in PCV-13.
93 These two serotypes were reported to be among top 11 predominant non-vaccine serotypes,
94 which accounted for 22% of invasive pneumococcal disease cases in India under-five years^{17,18}.
95 A recent study¹⁹, also reported that 22F and 33F as the most prevalent non-PCV13 serotypes
96 causing IPD²⁰. Moreover, these two serotypes are among the first to increase in replacement
97 disease after introduction of PCV-7 and PCV-13 vaccines^{19, 20}. Accessibility to PCVs with
98 additional serotypes can be increased when the vaccines are developed in a country such as India
99 that is among countries with the major disease burden.

100 Safety and immunogenicity of BE-PCV-14 was established in phase-1 and phase-2 studies in
101 healthy adults and toddlers respectively (CTRI/2017/06/008759 and CTRI/2017/11/010387).
102 Here we report the immunogenicity and safety of BE-PCV-14 in 6-8 weeks old healthy infants
103 (n=1290) in 6-10-14 weeks dosing schedule and PCV-13 was used as a comparator to
104 demonstrate the immunogenic non-inferiority.

105 **METHODS**

106 **Study Design and Participants**

107 The phase-3, two arm, single blind, randomized, active-controlled study was conducted between
108 February 2020 and March 2022 in India across 12 sites. Study was designed to evaluate the
109 immunogenic non-inferiority and safety of a BE-PCV-14 administered to 6-8 weeks old healthy
110 infants in 6-10-14 weeks dosing schedule. Participants were equally randomized (1:1) to receive
111 either BE-PCV-14 (test) or PCV-13 (Prevenar 13[®], comparator). In total, 1290 subjects were
112 enrolled into the study (n=645 in BE-PCV-14 arm and n=645 in PCV-13 arm). A dose of 0.5mL

113 of the study vaccine (BE-PCV-14 or PCV-13) was administered intramuscularly in a three dose
114 vaccination schedule (3+0) with a 4-weeks interval.

115 All enrolled subjects (N=1290) were healthy infants with ≥ 3300 grams weight at the time of
116 screening. None of the subjects received any licensed or investigational pneumococcal vaccine
117 prior to enrollment. Other permitted vaccines included single dose of BCG, hepatitis B, DTwP-
118 HepB-Hib (liquid pentavalent), polio and rotavirus vaccines. Informed consent was obtained
119 from subjects' parent(s) prior to performing any study specific procedure. Exclusion criteria used
120 were evidence of previous *S. pneumoniae* infection, use of any investigational or non-registered
121 product (drug or vaccine) -30 days prior to study vaccine administration, history of any
122 neurological disorders, meningitis, or seizures, family history of congenital or hereditary
123 immunodeficiency, history of allergic disease or history of a serious reaction to any prior
124 vaccination or known hypersensitivity likely to be exacerbated by any component of the study
125 vaccines. Complete list of eligibility criteria provided as supplementary information.

126 The study was conducted in accordance with the principles defined in the Declaration of
127 Helsinki, International Conference on Harmonization guidelines (Good Clinical Practices), and
128 the new drug and clinical trial rules, 2019 ²¹. The investigational review board or ethics
129 committee at each study site approved the protocol.

130 **Randomization and masking:**

131 Eligible subjects were randomized to receive either BE-PCV-14 or PCV-13 in 1:1 ratio and
132 randomization numbers were assigned using an interactive web-based randomization system
133 (IWRS). Randomization sequence was generated using SAS software (SAS Institute Inc, 100
134 SAS Campus Drive, Cary, NC 27513-2414, USA).

135 **Procedure**

136 Screening, enrolment, and first dose of primary vaccination was done when infants were 6-8
137 weeks old (visit-1; day 0). Second and third doses of primary vaccination (visit-2; day 28 and
138 visit-3; day 56) and a final follow up immunogenicity visit (visit-4, day 86) took place at four
139 weeks' interval.

140 An additional time window of +7 days for the second, third, and the fourth visit was permitted to
141 ensure subject's visit compliance.

142 Each 0.5mL of single human dose of BE-PCV-14 (PNEUBEVAX 14TM) contained 3µg of
143 serotype 1 and 2.2µg of each of serotypes 3, 4, 5, 7F, 9V, 14, 18C, 19A, 19F, 22F, 23F and 33F
144 and 4.4µg of serotype 6B polysaccharides conjugated to about 35 µg of non-toxic diphtheria
145 toxin cross-reacting material 197 (CRM₁₉₇) protein and adsorbed onto ≤0.75 mg of aluminium
146 phosphate (Al+++). The 13-valent Pneumococcal polysaccharide conjugate vaccine "PCV-13"
147 (control vaccine) contained 2.2µg of each of serotypes 1, 3, 4, 5, 6A, 7F, 9V, 14, 18C, 19A, 19F,
148 23F saccharides, and 4.4µg of 6B saccharide, 34µg CRM₁₉₇ carrier protein, and 125µg aluminum
149 as aluminum phosphate adjuvant. Both vaccines were administered in the anterolateral aspect of
150 thigh.

151 Approximately 5.0 mL of blood was collected at visit-1(day 0) and again at visit-4 (day 86).
152 Anti-PnCPS IgG antibody concentration estimation against each of the 14 vaccine serotypes was
153 performed as per the WHO reference ELISA assay ²² with a minor modification. Cell wall
154 polysaccharide (CWPS) multi was used instead of CWPS and 22F PnPS for pre-absorption to
155 neutralize non-specific antibodies and other common contaminants present in the PnPS coating
156 antigens. Functional antibody responses against all 14 serotypes were assessed by
157 opsonophagocytic activity (OPA) assay, which was performed at WHO pneumococcal serology

158 reference laboratory (UCL Great Ormond Street, Institute of Child Health, Immuno-biology
159 Section, United Kingdom).

160 Each vaccinated infant was observed for at least 60 minutes after vaccination to evaluate and
161 treat for any immediate adverse reactions. At each vaccination visit, a diary card was provided to
162 the subject's parent(s)/LAR[s] to record any solicited local/general AE occurring after
163 vaccination for 7 consecutive days (day 0 - day 6). List of solicited local and systemic AEs are
164 provided as supplementary information.

165 Unsolicited AEs, serious adverse events (SAEs), medically attended adverse events (MAAEs)
166 were recorded until the end of the study. Severity of all AEs was graded as per the common
167 terminology criteria for adverse events (CTCAE V5.0) or division of AIDS (DAIDS) table
168 version 2.0. Brighton collaboration scale was taken for severity grading of fever. All AEs were
169 assessed for relatedness to study vaccine by the investigator.

170 **Outcomes:**

171 Primary outcome of the study was to demonstrate serotype specific immunogenic non-inferiority
172 (NI) of BE-PCV-14 to licensed PCV-13 vaccine one month after the completion of primary
173 vaccination series against 12 common serotypes (1, 3, 4, 5, 6B, 7F, 9V, 14, 18C, 19A, 19F, and
174 23F) in terms of number of subjects seroconverted and the ratio of IgG geometric mean
175 concentrations (GMCs). Immunogenic NI for new serotypes 22F and 33F in BE-PCV-14 was
176 demonstrated by comparing immunoglobulin G (IgG) concentrations induced by serotypes 22F
177 and 33F of BE-PCV-14 with one of the PCV-13 serotypes that showed the lowest sero-response.
178 Sero-response or seroconversion rate was defined as proportion of vaccinated infants with
179 serotype specific IgG antibody concentrations of at least $\geq 0.35 \mu\text{g/ml}$ ²³.

180 One of the secondary objectives of the study was to assess the immune response in terms of
181 serotype specific opsonophagocytic activity (OPA) in a randomly chosen subset of subjects from
182 the BE-PCV-14 group compared with an equal number of subjects randomly chosen from PCV-
183 13 vaccinated group. Other secondary outcome was to evaluate the safety of BE-PCV-14 in
184 comparison with PCV-13 measured by the incidence rates of reactogenicity events (local
185 reactions and systemic events) and adverse events (AEs).

186 **Statistical Analyses**

187 **Sample size determination:**

188 Sample size estimation was based on the 2-sided 95% confidence interval (CI) for the difference
189 in proportion of subjects achieving a serotype-specific pneumococcal IgG concentration
190 $\geq 0.35\mu\text{g/mL}$ in each vaccine group. After study completion, a two-sided 95% confidence interval
191 for the true difference between the two proportions was constructed. The lower bound of the
192 confidence interval was to lie entirely on the positive side of the -10% points margin to
193 demonstrate non-inferiority.

194 Data from the phase-II safety and immunogenicity study in 12 to 23 months old children
195 conducted in India (CTRI/2017/11/010387) was used to support sample size estimation. The
196 power was computed for an anticipated test vaccine group proportion of 92.33% within the non-
197 inferiority margin set. The significance level of the test was targeted at 0.025. Accordingly,
198 sample sizes of 581 in each group was estimated to achieve 90% power and to detect a non-
199 inferiority margin difference between the group proportions of -0.10. An anticipated, not more
200 than 10% dropout rate was built-in to the sample size. Therefore, the overall sample size required
201 was 645 infants per group to obtain 581 evaluable infants per group at the end of the study.

202 ***Statistical analyses***

203 All demographic and baseline characteristics of both the groups were presented using intend-to
204 treat (ITT) population, defined as all subjects randomized into the study. The data was analyzed
205 by summary statistics. All subjects who received at least one dose of the study vaccine were
206 included in the safety analysis and the data was summarized descriptively. For continuous
207 variables *n*, *mean*, *standard deviation*, *median* and range (minimum, maximum) have been
208 presented. For categorical data, frequencies were computed. All reported adverse events during
209 the entire study period were summarized by calculating frequencies and listed per subject
210 including severity and relationship (causality).

211 The number and percentage of subjects with AEs were presented by system organ class and
212 preferred term. All medically attended AEs reported during the study were listed and analyzed
213 for expectedness and causality. Two-sided 95% exact confidence intervals were calculated for all
214 the occurrence rates of reported AEs and SAEs during the study. All AEs were coded using the
215 Medical Dictionary for Regulatory Activities (MedDRATM; version 25.1) coding dictionary and
216 concomitant medications have been coded using the World Health Organization (WHO) Drug
217 Dictionary, March 2022.

218 Immunogenicity assessment was based on the per-protocol population defined as the vaccinated
219 subjects whose blood samples were available for immunogenicity analysis at both baseline and
220 day 86 (visit-4). Non-inferiority of serotype specific immune responses induced by BV-PCV-14
221 against PCV-13 was assessed by one of the below two criteria as per the WHO defined criteria²³.

- 222 1. By measuring difference in proportion of subjects seroconverted to achieve serotype
223 specific anti-PnCPS IgG concentration ≥ 0.35 $\mu\text{g/ml}$ between BE-PCV-14 and PCV-13.
224 The lower limit of 95% CI for the difference in proportion subjects seroconverted
225 between BE-PCV-14 and PCV-13 should be above the minus 10% points.

226 2. By assessing the IgG GMC ratio (BE-PCV-14/PCV-13) along with its two sided 95%
227 confidence interval. Non- inferiority was considered achieved if the ratio of lower limit
228 of two sided 95% CI (test /control group) was above the pre-specified margin of 0.5.

229 For two new serotypes 22F and 33F which were not part of PCV-13, non-inferiority was
230 assessed by comparing with any serotype in the PCV-13 group that achieved the lowest
231 percentage of $\geq 0.35 \mu\text{g/ml}$ IgG GMC. For serotype 6A, which was not in BE-PCV-14 but present
232 in PCV-13, a ≥ 2 -fold increase in the 6A specific geometric mean concentrations (GMCs) above
233 pre-vaccination levels was assessed as an exploratory outcome. Proportion of subjects achieving
234 ≥ 4 -fold rise in anti-PnCPS IgG antibody concentrations from baseline and geometric mean fold
235 rise (GMFR) along with their 2-sided 95% CI against each of the vaccine serotype was
236 calculated.

237 As a secondary outcome, proportion of subjects achieving a serotype-specific OPA titre $\geq 1:8$ post
238 vaccination was assessed along with 2-sided 95% confidence. Serotype specific OPA geometric
239 mean titres (GMT) along with their ratios and GMFR against 12 common serotypes in both
240 vaccine groups was evaluated.

241 A reverse cumulative distribution (RCD) curve of anti-PnCPS antibody concentrations and OPA
242 GMT titers by serotype of BE-PCV-14 and PCV-13 were plotted for all common vaccine
243 serotypes in both groups.

244 **RESULTS**

245 A total of 1290 subjects were screened and randomly assigned to receive either BE-PCV-
246 14(n=645) or PCV-13 (n=645) study vaccine. Out of 1290 subjects, 1267 (98.2%) subjects (641
247 in BE-PCV-14 arm and 626 in PCV-13 arm) completed all the visit specific procedures and were
248 included in the immunogenicity (anti-PnCPS IgG antibody concentration) analysis. In total, 22

249 (1.7%) subjects were dropouts. Subject disposition with reason for dropout from the study was
250 presented in Figure 1. Safety analyses were performed in all enrolled subjects (n=1290) whereas
251 immunogenicity (per-protocol population) was completed in 1267 subjects. One subject was
252 excluded from per-protocol population due to insufficient serum sample and the rest (n=22) were
253 dropouts. Demographics of intention-to-treat population were presented in Table 1. Age of the
254 subjects and male to female ratio was comparable in both BE-PCV-14 and PCV-13 arms.
255 Summary of other eligible vaccinations received by study subjects was presented in
256 Supplementary Table 1.

257 The proportion of subjects with anti-PnCPS IgG antibody concentrations equal to or above the
258 protective threshold $\geq 0.35\mu\text{g/mL}$ (primary outcome) at day 86 in BE-PCV-14 (n=641) group was
259 in the range of 76.3% (serotype 6B) to 99.7% (serotype 14) and in the PCV-13 (n=626) group,
260 the response rate was in the range of 77% (serotype 3) to 100% (serotype 14) for 12 common
261 serotypes. The lower limit of 95% CI for the difference in proportion of subjects seroconverted
262 between BE-PCV-14 and PCV-13 was above the minus 10% points for all the 12 common
263 serotypes (serotype 1, 3, 4, 5, 6B, 7F, 9V, 14, 18C, 19A, 19F and 23F) and all of them met pre-
264 defined NI criteria. The distributions in serotype-specific IgG concentrations for 12 common
265 serotypes in both vaccine groups were similar, as shown by the reverse cumulative distribution
266 curves (Figure 3).

267 Seroreponse rates for serotype 22F (94.1%) and 33F (73.2%) that are present only in BE-PCV-
268 14 group were compared with the lowest performing serotype 3 (77.0%) in PCV-13 group.
269 Defined NI criteria was met for both serotypes 22F and 33F (Figure 2a).

270 For IgG geometric mean concentrations, NI criteria was achieved for all 12 common serotypes
271 and for additional 22F and 33F serotypes (Figure 2b). The lower bound of the 95% CI for GMC

272 ratio was in the range of 0.67 (serotype 1) to 1.10 (serotype 3) for 12 common serotypes present
273 in BE-PCV-14 and PCV-13. For serotype 3 and serotype 14, lower bound 95% CI was 1.10 and
274 1.01 respectively, indicating that BE-PCV-14 induces strong immune response compared to
275 PCV-13. Serotypes 22F and 33F, which are not present in PCV-13, the lower bound of the 95%
276 CI for GMC ratio was 5.26 and 1.82 respectively (Figure 2b), when compared to the lowest
277 performing serotype in PCV-13 (serotype 3).

278 The proportion of subjects achieving a serotype-specific OPA titer \geq LLOQ (\geq 1:8) at day 86 were
279 in the range of 63.64% (serotype-1) to 98.43% (serotype-22F) in BE-PCV-14 group and 64.43%
280 (serotype-1) to 98.46% (serotype-7F and serotype-23F) in PCV-13 group. Overall, the OPA
281 GMTs were comparable among all common serotypes in both vaccinated groups (Table 2).

282 The additional serotypes 22F and 33F in BE-PCV-14 vaccine had 15.16 and 16.91-fold rise in
283 OPA GMTs respectively at day 86 compared to pre-vaccination levels, signifying that both the
284 additional serotypes can induce high levels of protective functional antibodies in vaccinated
285 infants (Table 2). The proportion of subjects achieving \geq 4-fold increase in anti-PnCPS IgG
286 antibody concentrations at day 86 from baseline is presented in Table 3.

287 BE-PCV-14 vaccine has serotype 6B and no serotype 6A. In this study, we tested the cross
288 protection against serotype 6A, assessed by a \geq 2-fold increase in the 6A specific IgG antibody
289 concentrations and the OPA antibody titers above the pre-vaccination levels. There was 2.4-fold
290 (pre-vaccination GMC: 0.45 and post-vaccination GMC: 1.08) and 7.64-fold (OPA GMT were
291 16.59 and 134.50 for pre- and post-vaccination, respectively) increase in serotype 6A specific
292 IgG and OPA antibody titers respectively (Table 4). Our data on serotype 6A specific 69.7%
293 seroconversion and 2.4-fold rise in GMC in BE-PCV-14 vaccinated infants along with functional

294 antibody titers (OPA) GMFR of 7.64 fold strongly suggests that the serotype 6B confers
295 significant immunological cross protection against serotype 6A.

296 The current study demonstrated that BE's 14-valent pneumococcal polysaccharide conjugate
297 vaccine, administered in a 3-dose schedule (6-10-14 weeks), was safe, immunogenic and non-
298 inferior to PCV-13 for the 12 common serotypes.

299 Among all vaccinated infants (n=1290), 175/645 (27.1%) subjects and 178/645 (27.6%) subjects
300 reported at least one adverse event in BE-PCV-14 and PCV-13 groups respectively. All the
301 reported adverse events were generally mild and only very few cases were moderate in their
302 intensity. Majority of the reported adverse events were solicited in nature and related to the study
303 vaccine. Overview of the reported AEs including solicited and unsolicited AEs were presented in
304 Table 5. Summary of AEs by system organ class (SOC) and preferred term (PT) were shown in
305 Table 6. No severe or serious AEs were reported in either of the vaccine groups. Overview of
306 AEs by severity grade and causality to the study vaccine were presented in Table 7. Summary of
307 local, solicited systemic and unsolicited AEs by SOC and PT were presented in Supplementary
308 Table 2, 3 and 4. No clinically significant changes overtime were noted in the vital signs. The
309 AEs observed and physical examination results did not indicate any safety issues of concern.
310 Overall, the safety profile of BE-PCV-14 was comparable to the control vaccine PCV-13 in
311 terms of AE rates, related AE rates and medically attended AEs and found to be safe and well
312 tolerated.

313 **DISCUSSION**

314 In this phase-3 trial, immunogenic non-inferiority, safety, and reactogenicity of a candidate BE-
315 PCV-14 vaccine administered to 6-8 weeks old healthy infants in 6-10-14 weeks dosing schedule
316 was evaluated. Robust and functional immune responses were elicited by BE-PCV-14 one month

317 after the third vaccination dose. Primary basis for NI comparison and licensure decisions were
318 based on reaching IgG concentrations $\geq 0.35\mu\text{g/ml}$ for all vaccine specific serotypes in the new
319 vaccine and the licensed comparator. In accordance with WHO TRS 977 guidelines²³, all 12
320 common serotypes in BE-PCV-14 met the non-inferiority criteria with those serotypes in PCV-
321 13 in terms of both seroconversion rates (percentage of subjects with IgG $\geq 0.35\mu\text{g/ml}$) and GMC
322 ratios (≥ 0.5). Both BE-PCV-14 and PCV-13 generated comparable functional immune responses
323 (OPA titres), similar to IgG response.

324 In the current study, we evaluated the cross-protection offered by serotype 6B against serotype
325 6A in BE-PCV-14 vaccinated group. Serotype 6A and 6B have high structural similarity of
326 polysaccharide^{24,25}. Therefore, it was expected that the immune responses induced by serotype
327 6B would provide at least partial cross-protection against serotype 6A in humans. An earlier
328 study reported that PCV-13 elicits cross-functional opsonophagocytic killing responses in
329 humans to serotypes not directly covered by the vaccine²⁶. In this study, cross-protection was
330 assessed by a ≥ 2 -fold increase in the 6A specific IgG antibody concentrations and the OPA
331 antibody titers above the pre-vaccination levels. We found 2.4-fold and 7.64-fold increase in IgG
332 GMC and OPA titers respectively, against serotype 6A in BE-PCV-14 vaccinated subjects,
333 suggesting that BE-PCV-14 vaccine can offer protection against serotype 6A even though this
334 serotype antigen is not present in BE-PCV-14. The serotype 6A cross protective functional
335 immune response elicited by BE-PCV-14 is notably robust and strong when compared to another
336 10-valent PCV as described elsewhere²⁷. This clearly indicates that serotype 6B in BE-PCV-14
337 affords significant cross protection to serotype 6A. Our results are consistent with previous
338 studies, where it was shown that 23-valent polysaccharide vaccine lacking serotype 6A and
339 carrying serotype 6B elicited cross-functional immune responses against serotype 6A^{28,29}.

340 Vaccine effectiveness (VE) against IPD was established in pediatric population for PCV-13
341 specific serotypes and it was found to be around 55%³⁰. Breakthrough IPD was mainly caused
342 by serotype 3 and 19A in PCV-13 vaccinated children. Excluding serotype 3 and 19A, VE of
343 PCV-13 against rest of the vaccine serotypes was reported to be 89%³⁰. BE-PCV-14 was non-
344 inferior to PCV-13 for all shared serotypes and against 2 unique serotypes (22F and 33F) when
345 compared against lowest performing serotype 3 from PCV-13. Importantly, 83.5% of BE-PCV-
346 14 vaccinated children seroconverted against serotype 3 while 77% seroconverted to serotype 3
347 in PCV-13 group. Several studies worldwide have shown that substantial proportion of
348 pneumococcal disease is caused by non-vaccine serotypes, predominantly by serotype 22F
349 (13.4%) and 33F (21%)^{19,31,32}. Another 15 valent PCV carrying these two serotypes was shown
350 to induce serotype 22F and 33F immune response when compared to PCV-13³³. Similarly, the
351 present study also demonstrates that BE-PCV-14 elicited serotype specific (22F and 33F)
352 superior immune responses (Figure 2b).

353 BE-PCV-14 containing 12 common serotypes and 22F and 33F serotypes along with cross
354 protection to serotype 6A can protect the susceptible population against pneumococcal disease
355 and may also provide herd immunity.

356 One limitation of the current study is that it is conducted in only Indian infant population and
357 need to conduct similar studies in other regions. However, based on the VE and post marketing
358 experience with PCV-13 across different geographical regions, it is likely that BE-PCV-14 will
359 have similar effectiveness across regions.

360 In conclusion, BE-PCV-14 was safe, well tolerated and showed comparable safety profile to that
361 of PCV-13. BE-PCV-14 elicited immune responses non-inferior to PCV-13 in infants for all 12
362 common serotypes. Statistical NI was also met for two new serotypes 22F and 33F in BE-PCV-

363 14 vaccine. BE-PCV-14 also induced cross protective antibodies against serotype 6A. These data
364 support BE-PCV-14 protection against 14 pneumococcal serotypes and potential benefit against
365 serotype 6A.

366

367

368

369 **Acknowledgement**

370 We are thankful to all the study participants, the principal investigators, and the study staff at all
371 the clinical sites. We are thankful to all the study participants, the principal investigators, and the
372 study staff at all the clinical sites. The authors would like to thank Scientific Advisory Board
373 (SAB) and the Management of Biological E Limited for their support and valuable guidance. All
374 authors wish to express their appreciation and gratitude for all front-line healthcare workers.
375 Development of this vaccine would not have been possible without the efforts of R&D team,
376 manufacturing, quality control, quality assurance and regulatory teams at Biological E. We
377 would also like to thank the members of the DSMB for safety monitoring of the study data.
378 Authors would like to thank Dr. Pothakamuri Venkata Suneetha for her valuable support in
379 drafting, reviewing and finalizing the manuscript, and Mr. Kalyan Kumar P, Mr. Raju
380 Esanakarra & Mr. Naga Ganesh B for clinical site management and monitoring.

381 **Conflicts of Interest:**

382 RVM, ST, SG, VY, RM, KT and PP are employees of Biological E Limited and they do not have
383 any stock options or incentives. All the other participating authors declare no conflicts of
384 interest.

385 **Data Sharing Agreement**

386 Study data presented in the manuscript can be made available upon request and addressed to the
387 corresponding author Dr. Ramesh V Matur at his email: Ramesh.Matur@biologicale.com

388

389 **REFERENCES**

- 390 1. Publication WHO. Pneumococcal vaccines WHO position paper - 2012 -
391 recommendations. *Vaccine* 2012; **30**(32): 4717-8.
- 392 2. Drijkoningen JJ, Rohde GG. Pneumococcal infection in adults: burden of disease. *Clin*
393 *Microbiol Infect* 2014; **20 Suppl 5**: 45-51.
- 394 3. Wahl B, O'Brien KL, Greenbaum A, et al. Burden of Streptococcus pneumoniae and
395 Haemophilus influenzae type b disease in children in the era of conjugate vaccines: global,
396 regional, and national estimates for 2000-15. *Lancet Glob Health* 2018; **6**(7): e744-e57.
- 397 4. Kolhapure S, Yewale V, Agrawal A, Krishnappa P, Soumahoro L. Invasive
398 Pneumococcal Disease burden and PCV coverage in children under five in Southeast Asia:
399 implications for India. *J Infect Dev Ctries* 2021; **15**(6): 749-60.
- 400 5. Bravo LC, Asian Strategic Alliance for Pneumococcal Disease Prevention Working G.
401 Overview of the disease burden of invasive pneumococcal disease in Asia. *Vaccine* 2009;
402 **27**(52): 7282-91.
- 403 6. Geno KA, Gilbert GL, Song JY, et al. Pneumococcal Capsules and Their Types: Past,
404 Present, and Future. *Clin Microbiol Rev* 2015; **28**(3): 871-99.
- 405 7. ANTIBIOTIC RESISTANCE THREATS IN THE UNITED STATES. 2019.
406 www.cdc.gov/DrugResistance/Biggest-Threats.html.
- 407 8. Niederman MS, Folaranmi T, Buchwald UK, Musey L, Cripps AW, Johnson KD.
408 Efficacy and effectiveness of a 23-valent polysaccharide vaccine against invasive and
409 noninvasive pneumococcal disease and related outcomes: a review of available evidence. *Expert*
410 *Rev Vaccines* 2021; **20**(3): 243-56.
- 411 9. Clutterbuck EA, Lazarus R, Yu LM, et al. Pneumococcal conjugate and plain
412 polysaccharide vaccines have divergent effects on antigen-specific B cells. *J Infect Dis* 2012;
413 **205**(9): 1408-16.
- 414 10. Harboe ZB, Dalby T, Weinberger DM, et al. Impact of 13-valent pneumococcal
415 conjugate vaccination in invasive pneumococcal disease incidence and mortality. *Clin Infect Dis*
416 2014; **59**(8): 1066-73.
- 417 11. McLaughlin JM, Jiang Q, Isturiz RE, et al. Effectiveness of 13-Valent Pneumococcal
418 Conjugate Vaccine Against Hospitalization for Community-Acquired Pneumonia in Older US
419 Adults: A Test-Negative Design. *Clin Infect Dis* 2018; **67**(10): 1498-506.
- 420 12. Pilishvili T, Lexau C, Farley MM, et al. Sustained reductions in invasive pneumococcal
421 disease in the era of conjugate vaccine. *J Infect Dis* 2010; **201**(1): 32-41.
- 422 13. Tomczyk S, Lynfield R, Schaffner W, et al. Prevention of Antibiotic-Nonsusceptible
423 Invasive Pneumococcal Disease With the 13-Valent Pneumococcal Conjugate Vaccine. *Clin*
424 *Infect Dis* 2016; **62**(9): 1119-25.
- 425 14. Vadlamudi NK, Chen A, Marra F. Impact of the 13-Valent Pneumococcal Conjugate
426 Vaccine Among Adults: A Systematic Review and Meta-analysis. *Clin Infect Dis* 2019; **69**(1):
427 34-49.
- 428 15. Wantuch PL, Avci FY. Invasive pneumococcal disease in relation to vaccine type
429 serotypes. *Hum Vaccin Immunother* 2019; **15**(4): 874-5.
- 430 16. Balsells E, Guillot L, Nair H, Kyaw MH. Serotype distribution of Streptococcus
431 pneumoniae causing invasive disease in children in the post-PCV era: A systematic review and
432 meta-analysis. *PLoS One* 2017; **12**(5): e0177113.

- 433 17. Jaiswal N, Singh M, Das RR, et al. Distribution of serotypes, vaccine coverage, and
434 antimicrobial susceptibility pattern of *Streptococcus pneumoniae* in children living in SAARC
435 countries: a systematic review. *PLoS One* 2014; **9**(9): e108617.
- 436 18. Manoharan A, Manchanda V, Balasubramanian S, et al. Invasive pneumococcal disease
437 in children aged younger than 5 years in India: a surveillance study. *Lancet Infect Dis* 2017;
438 **17**(3): 305-12.
- 439 19. Amin-Chowdhury Z, Groves N, Sheppard CL, et al. Invasive pneumococcal disease due
440 to 22F and 33F in England: A tail of two serotypes. *Vaccine* 2021; **39**(14): 1997-2004.
- 441 20. Ladhani SN, Collins S, Djennad A, et al. Rapid increase in non-vaccine serotypes causing
442 invasive pneumococcal disease in England and Wales, 2000-17: a prospective national
443 observational cohort study. *Lancet Infect Dis* 2018; **18**(4): 441-51.
- 444 21. NewDrugs_CTRules_2019. 2019.
445 [https://cdsco.gov.in/opencms/export/sites/CDSKO_WEB/Pdf-](https://cdsco.gov.in/opencms/export/sites/CDSKO_WEB/Pdf-documents/NewDrugs_CTRules_2019.pdf)
446 [documents/NewDrugs_CTRules_2019.pdf](https://cdsco.gov.in/opencms/export/sites/CDSKO_WEB/Pdf-documents/NewDrugs_CTRules_2019.pdf).
- 447 22. Wernette CM, Frasch CE, Madore D, et al. Enzyme-linked immunosorbent assay for
448 quantitation of human antibodies to pneumococcal polysaccharides. *Clin Diagn Lab Immunol*
449 2003; **10**(4): 514-9.
- 450 23. Standardization WECob. Recommendations to assure the quality, safety and efficacy of
451 pneumococcal conjugate vaccines. 2013. [https://cdn.who.int/media/docs/default-](https://cdn.who.int/media/docs/default-source/biologicals/vaccine-standardization/pneumococcus/trs_977_annex_3.pdf?sfvrsn=344f81e_3&download=true)
452 [source/biologicals/vaccine-](https://cdn.who.int/media/docs/default-source/biologicals/vaccine-standardization/pneumococcus/trs_977_annex_3.pdf?sfvrsn=344f81e_3&download=true)
453 [standardization/pneumococcus/trs_977_annex_3.pdf?sfvrsn=344f81e_3&download=true](https://cdn.who.int/media/docs/default-source/biologicals/vaccine-standardization/pneumococcus/trs_977_annex_3.pdf?sfvrsn=344f81e_3&download=true).
- 454 24. Bratcher PE, Park IH, Hollingshead SK, Nahm MH. Production of a unique
455 pneumococcal capsule serotype belonging to serogroup 6. *Microbiology (Reading)* 2009; **155**(Pt
456 2): 576-83.
- 457 25. Park IH, Pritchard DG, Cartee R, Brandao A, Brandileone MC, Nahm MH. Discovery of
458 a new capsular serotype (6C) within serogroup 6 of *Streptococcus pneumoniae*. *J Clin Microbiol*
459 2007; **45**(4): 1225-33.
- 460 26. Cooper D, Yu X, Sidhu M, Nahm MH, Fernsten P, Jansen KU. The 13-valent
461 pneumococcal conjugate vaccine (PCV13) elicits cross-functional opsonophagocytic killing
462 responses in humans to *Streptococcus pneumoniae* serotypes 6C and 7A. *Vaccine* 2011; **29**(41):
463 7207-11.
- 464 27. Clarke E, Bashorun A, Adigweme I, et al. Immunogenicity and safety of a novel ten-
465 valent pneumococcal conjugate vaccine in healthy infants in The Gambia: a phase 3,
466 randomised, double-blind, non-inferiority trial. *Lancet Infect Dis* 2021; **21**(6): 834-46.
- 467 28. Yu X, Gray B, Chang S, Ward JI, Edwards KM, Nahm MH. Immunity to cross-reactive
468 serotypes induced by pneumococcal conjugate vaccines in infants. *J Infect Dis* 1999; **180**(5):
469 1569-76.
- 470 29. Kim HW, Lee S, Kim KH. Serotype 6B from a pneumococcal polysaccharide vaccine
471 induces cross-functional antibody responses in adults to serotypes 6A, 6C, and 6D. *Medicine*
472 *(Baltimore)* 2016; **95**(37): e4854.
- 473 30. Ricketson LJ, Bettinger JA, Sadarangani M, Halperin SA, Kellner JD, Canadian
474 Immunization Monitoring Program AI. Vaccine effectiveness of the 7-valent and 13-valent
475 pneumococcal conjugate vaccines in Canada: An IMPACT study. *Vaccine* 2022; **40**(19): 2733-
476 40.

477 31. Owusu-Edusei K, Deb A, Johnson KD. Estimates of the Health and Economic Burden of
478 Pneumococcal Infections Attributable to the 15-Valent Pneumococcal Conjugate Vaccine
479 Serotypes in the USA. *Infect Dis Ther* 2022; **11**(3): 987-99.

480 32. Demczuk WH, Martin I, Griffith A, et al. Serotype distribution of invasive *Streptococcus*
481 *pneumoniae* in Canada after the introduction of the 13-valent pneumococcal conjugate vaccine,
482 2010-2012. *Can J Microbiol* 2013; **59**(12): 778-88.

483 33. Bannietts N, Wysocki J, Szenborn L, et al. A phase III, multicenter, randomized, double-
484 blind, active comparator-controlled study to evaluate the safety, tolerability, and immunogenicity
485 of catch-up vaccination regimens of V114, a 15-valent pneumococcal conjugate vaccine, in
486 healthy infants, children, and adolescents (PNEU-PLAN). *Vaccine* 2022; **40**(44): 6315-25.

487
488
489
490
491
492
493
494
495
496
497
498
499
500
501
502
503
504
505
506
507
508
509
510
511
512
513
514
515
516
517
518
519
520
521
522

523
524
525

526 **Tables:**

527 **TABLE 1: Demographic characteristics of study participants**

Parameter/ Statistics/Category	BE-PCV-14 (N=645)	PCV-13 (N=645)	Overall (N=1290)
Age (Days)			
N1	645	645	1290
Mean	48.3	48.3	48.3
SD	3.75	3.69	3.72
Median	48.0	48.0	48.0
Range (Min: Max)	(42.0:56.0)	(42.0:56.0)	(42.0:56.0)
Gender, N1 (%)			
Male	342 (53.0%)	365 (56.6%)	707(54.8%)
Female	303 (47.0%)	280 (43.4%)	583(45.2%)
Height (Cms)			
N1	645	645	1290
Mean	52.0	52.0	52.0
SD	3.76	4.03	3.89
Median	51.4	51.2	51.3
Range (Min: Max)	(40.0:69.0)	(41.0:72.0)	(40.0:72.0)
Weight (Gms)			
N1	645	645	1290
Mean	4162.9	4165.7	4164.3
SD	526.85	526.44	526.44
Median	4100.0	4100.0	4100.0
Range (Min: Max)	(3300.0:6000.0)	(3300.0:6300.0)	(3300.0:6300.0)
Nationality, N1 (%)			
Indian	645 (100.0%)	645 (100.0%)	1290(100.0%)
BMI			
N1	645	645	1290
Mean	15.5	15.5	15.5
SD	2.19	2.31	2.25
Median	15.6	15.7	15.7
Range (Min: Max)	(8.0:25.0)	(8.0:26.5)	(8.0:26.5)

Note: Percentages were calculated using respective column header count as denominator.

N₁: Subject Count, N: Sample Size.

528

529

530 **Table 2: Summary of serotype-specific OPA titer \geq LLOQ (\geq 1:8) in terms of sero-**
 531 **conversion rates, GMTs and fold rise.**

Serotype	OPA sero-conversion rate		OPA GMTs		Percentage of subjects with at least 4 fold rise in OPA GMTs post vaccination		GMFR	
	BE-PCV-14	PCV-13	BE-PCV-14	PCV-13	BE-PCV-14	PCV-13	BE-PCV-14	PCV-13
Serotype 1	63.64	64.43	23.21	19.94	45.99	42.78	3.81	3.32
Serotype 3	71.81	79.58	59.6	63.01	62.77	61.26	9.97	9.86
Serotype 4	93.68	91.75	426.67	626.04	73.16	73.71	25.92	52.55
Serotype 5	80.73	84.1	66.47	78.17	60.94	66.67	8.95	11.61
Serotype 6B	88.48	88.21	990.66	918.24	70.68	68.72	26.32	27.9
Serotype 7F	97.4	98.46	1023.16	1156.95	71.35	76.92	14.56	19.97
Serotype 9V	97.92	97.94	856.81	746.44	78.65	72.16	24.18	27.22
Serotype 14	95.81	97.44	1951.14	1272.2	61.78	61.03	16.85	13.37
Serotype 18C	93.23	94.36	460.7	561.01	63.02	64.1	15.89	23.39
Serotype 19A	95.83	95.9	394.65	451.18	68.75	76.41	17.57	22.2
Serotype 19F	94.79	92.31	604.3	439.94	83.33	79.49	34.88	26.39
Serotype 23F	97.37	98.46	768.79	995.13	68.42	73.85	16.77	27.8
Serotype 22F	98.43	NA	691.6	NA	61.26	NA	15.16	NA
Serotype 33F	94.18	NA	1859.67	NA	60.85	NA	16.91	NA

532

533

534

535

536 **Table 3: Proportion of subjects achieving ≥ 4 -fold increase in anti-PnCPS IgG antibody**
 537 **concentrations**

Anti-PnCPS IgG against each of the vaccine serotype post vaccination (Day 86)	BE-PCV14 (N=641) N1 (%) [95% CI]	PCV-13 (N=626) N1 (%) [95% CI]
Serotype 1	394 (61.5%) [57.58:65.25]	441 (70.4%) [66.70:74.00]
Serotype 3	299 (46.6%) [42.73:50.59]	253 (40.4%) [36.54:44.38]
Serotype 4	241 (37.6%) [33.83:41.48]	294 (47.0%) [43.00:50.96]
Serotype 5	388 (60.5%) [56.63:64.34]	358 (57.2%) [53.21:61.10]
Serotype 6B	341 (53.2%) [49.25:57.12]	324 (51.8%) [47.76:55.74]
Serotype 7F	455 (71.0%) [67.30:74.47]	463 (74.0%) [70.34:77.36]
Serotype 9V	422 (65.8%) [62.02:69.50]	390 (62.3%) [58.37:66.11]
Serotype 14	172 (26.8%) [23.44:30.44]	157 (25.1%) [21.73:28.67]
Serotype 18C	230 (35.9%) [32.16:39.73]	243 (38.8%) [34.98:42.76]
Serotype 19A	212 (33.1%) [29.44:36.87]	230 (36.7%) [32.95:40.65]
Serotype 19F	410 (64.0%) [60.11:67.69]	419 (66.9%) [63.09:70.61]

Anti-PnCPS IgG against each of the vaccine serotype post vaccination (Day 86)	BE-PCV14 (N=641) N1 (%) [95% CI]	PCV-13 (N=626) N1 (%) [95% CI]
Serotype 23F	362 (56.5%) [52.54:60.35]	371 (59.3%) [55.30:63.14]

Note: Percentage was calculated using respective header count as denominator
95% CI for was calculated using Clopper Pearson Method .

538

539

540

541

542

543

544

545

546

547

548

549

550

551

552

553

554

555 **Table 4: Serotype-6A specific IgG and OPA immune responses:**

ST-6A IgG GMC (N=1290)	Pre-Vac	Post-Vac	GMFR	ST-6A OPA GMT (N=386)	Pre-Vac	Post-Vac	GMFR
BE-PCV- 14 (n=645)	0.448	1.075	2.4	BE- PCV14 (n=192)	16.59	134.50	7.64
PCV-13 (n=645)	0.446	1.906	4.27	PCV-13 (n=194)	19.20	690.63	37.35

556

557

558

559

560

561

562

563

564

565

566

567

568

569 **Table 5: Overview of AEs- solicited and unsolicited AEs**

Category N1 (%) [95% CI] n	BE-PCV-14 (N=645)	PCV-13 (N=645)
Overall AEs	175 (27.1%) [23.73:30.74] 355	178 (27.6%) [24.18:31.22] 353
Serious AEs	0 (0.0%) [NE] 0	0 (0.0%) [NE] 0
Severe AEs	0 (0.0%) [NE] 0	0 (0.0%) [NE] 0
Local AEs	137 (21.2%) [18.14:24.60] 235	144 (22.3%) [19.17:25.74] 251
Systemic AEs	70 (10.9%) [8.56:13.51] 118	63 (9.8%) [7.59:12.32] 101
Medically Attended AEs	0 (0.0%) [NE] 0	0 (0.0%) [NE] 0
AEs within 60 minutes postvac	4 (0.6%) [0.17:1.58] 6	4 (0.6%) [0.17:1.58] 5
AEs within 7 days postvac	174 (27.0%) [23.59:30.58] 354	178 (27.6%) [24.18:31.22] 352
AEs between Day 0 to Day 28	115 (17.8%) [14.95:21.01] 207	109 (16.9%) [14.09:20.02] 190
AEs between Day 28 to Day 56	61 (9.5%) [7.31:11.98] 93	73 (11.3%) [8.98:14.02] 110
AEs between Day 56 to Day 86	46 (7.1%) [5.27:9.40] 55	41 (6.4%) [4.60:8.52] 53
Any Solicited AEs	174 (27.0%) [23.59:30.58] 353	178 (27.6%) [24.18:31.22] 352
Any Unsolicited AEs	2 (0.3%) [0.04:1.12] 2	1(0.2%)[0.00:0.86]1

Note: Percentages were calculated using respective column header group count as denominator.

95% CI was calculated by Clopper-Pearson Method.

N₁: Subject Count, N: Subject Count, N: Sample Size, n: Event Count

General Note:

- All AE's were represented as: Subject count (Percentage of subjects) [95% CI] Event Count.
- Solicited Local and Systemic AEs were recored during 7 days (Day 0 – Day 6) after the vaccination.
- Unsolicited adverse event reported at any time, until 28 days after the vaccination.

570

571

572

573

574 **Table 6: Summary of AEs by SOC and PT**

SOC/PT, N1 (%) [95% CI] n	BE-PCV-14 (N=645)	PCV-13 (N=645)
Overall	175 (27.1%) [23.73:30.74] 355	178 (27.6%) [24.18:31.22] 353
Gastrointestinal disorders	9 (1.4%) [0.64:2.63] 12	5 (0.8%) [0.25:1.80] 8
Abdominal pain	1 (0.2%) [0.00:0.86] 1	0 (0.0%) [NE] 0
Diarrhoea	6 (0.9%) [0.34:2.01] 8	2 (0.3%) [0.04:1.12] 3
Vomiting	3 (0.5%) [0.10:1.35] 3	4 (0.6%) [0.17:1.58] 5
General disorders and administration site conditions	169 (26.2%) [22.85:29.78] 329	173 (26.8%) [23.44:30.42] 333
Injection site erythema	33 (5.1%) [3.55:7.11] 38	36 (5.6%) [3.94:7.64] 44
Injection site induration	9 (1.4%) [0.64:2.63] 13	13 (2.0%) [1.08:3.42] 18
Injection site pain	93 (14.4%) [11.80:17.37] 133	98 (15.2%) [12.51:18.20] 131
Injection site swelling	44 (6.8%) [5.00:9.05] 51	48 (7.4%) [5.54:9.75] 58
Irritability Postvaccinal	25 (3.9%) [2.52:5.67] 41	21 (3.3%) [2.03:4.93] 31
Pyrexia	42 (6.5%) [4.73:8.70] 53	40 (6.2%) [4.47:8.35] 51
Metabolism and nutrition disorders	8 (1.2%) [0.54:2.43] 9	6 (0.9%) [0.34:2.01] 10
Decreased appetite	8 (1.2%) [0.54:2.43] 9	6 (0.9%) [0.34:2.01] 10
Nervous system disorders	2 (0.3%) [0.04:1.12] 4	1 (0.2%) [0.00:0.86] 2
Somnolence	2 (0.3%) [0.04:1.12] 4	1 (0.2%) [0.00:0.86] 2
Respiratory, thoracic and mediastinal disorders	1 (0.2%) [0.00:0.86] 1	0 (0.0%) [NE] 0
Cough	1 (0.2%) [0.00:0.86] 1	0 (0.0%) [NE] 0

Note: Percentages were calculated using column header group count as denominator.

95% CI were calculated by Clopper -Pearson Method.

N1: Subject Count, N: Sample Size, n: Event Count

General Note:

• All AE's were represented as: Subject count (Percentage of subjects) [95% CI] Event Count.

575

576

577

578

579

580

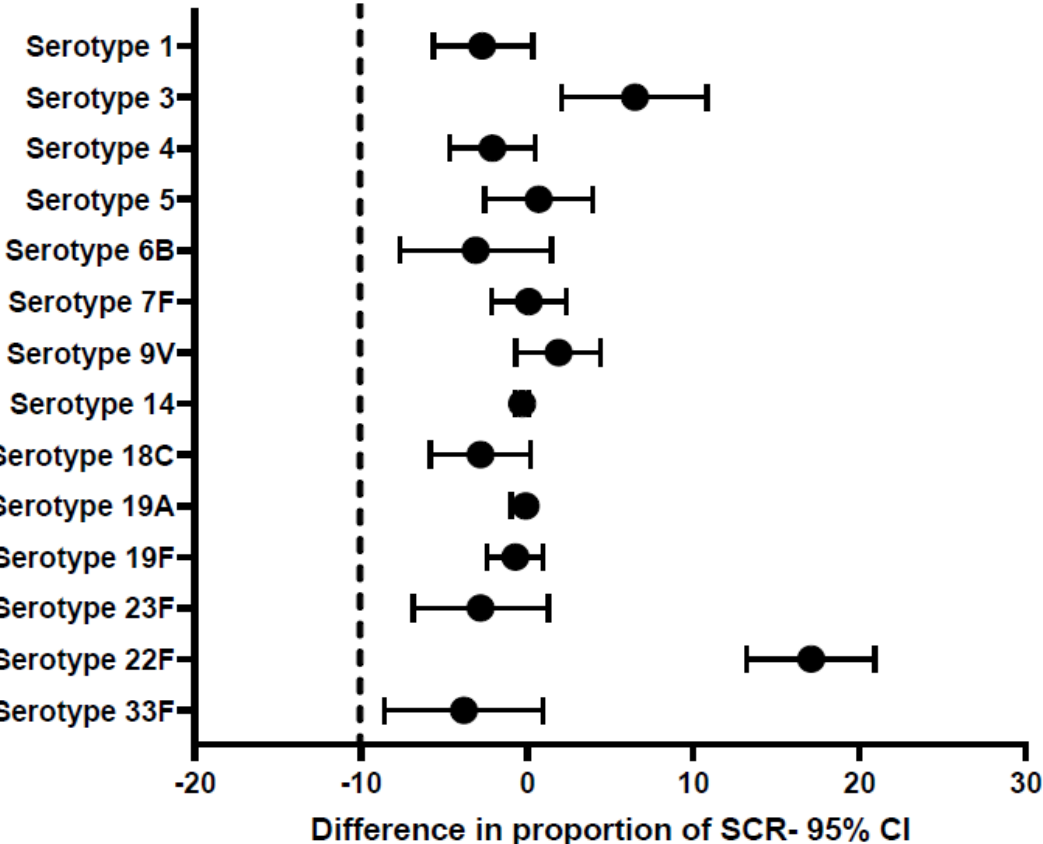
581 **Table 7: Overview AEs by Severity & Causality**

Category	BE-PCV-14 (N=645)	PCV-13 (N=645)
N1 (%) [95% CI] n		
Number of subjects with at least one AE	175 (27.1%) [23.73:30.74] 355	178 (27.6%) [24.18:31.22] 353
Number of subjects with at least one SAE	0 (0.0%) [NE] 0	0 (0.0%) [NE] 0
Number of subjects with at least one MAAE	0 (0.0%) [NE] 0	0 (0.0%) [NE] 0
Severity		
Mild	174 (27.0%) [23.59:30.58] 343	177 (27.4%) [24.03:31.06] 338
Moderate	6 (0.9%) [0.34:2.01] 12	10 (1.6%) [0.75:2.83] 15
Severe	0 (0.0%) [NE] 0	0 (0.0%) [NE] 0
Life-threatening	0 (0.0%) [NE] 0	0 (0.0%) [NE] 0
Causality		
Certain	61 (9.5%) [7.31:11.98] 79	65 (10.1%) [7.86:12.66] 79
Probable	73 (11.3%) [8.98:14.02] 84	68 (10.5%) [8.28:13.17] 77
Possible	48 (7.4%) [5.54:9.75] 185	53 (8.2%) [6.22:10.61] 194
Unlikely	5 (0.8%) [0.25:1.80] 6	3 (0.5%) [0.10:1.35] 3
Unrelated	1 (0.2%) [0.00:0.86] 1	0 (0.0%) [NE] 0
Unclassifiable	0 (0.0%) [NE] 0	0 (0.0%) [NE] 0
Related (Certain/Probable/Possible)	173 (26.8%) [23.44:30.42] 348	177 (27.4%) [24.03:31.06] 350
Unrelated (Unlikely/Unrelated/Unclassifiable)	5 (0.8%) [0.25:1.80] 7	3 (0.5%) [0.10:1.35] 3
Number of subjects discontinued due to AE	0 (0.0%) [NE] 0	0 (0.0%) [NE] 0

582

583

Figure 2a: Difference in proportion of seroconversion rates with 95% confidence intervals



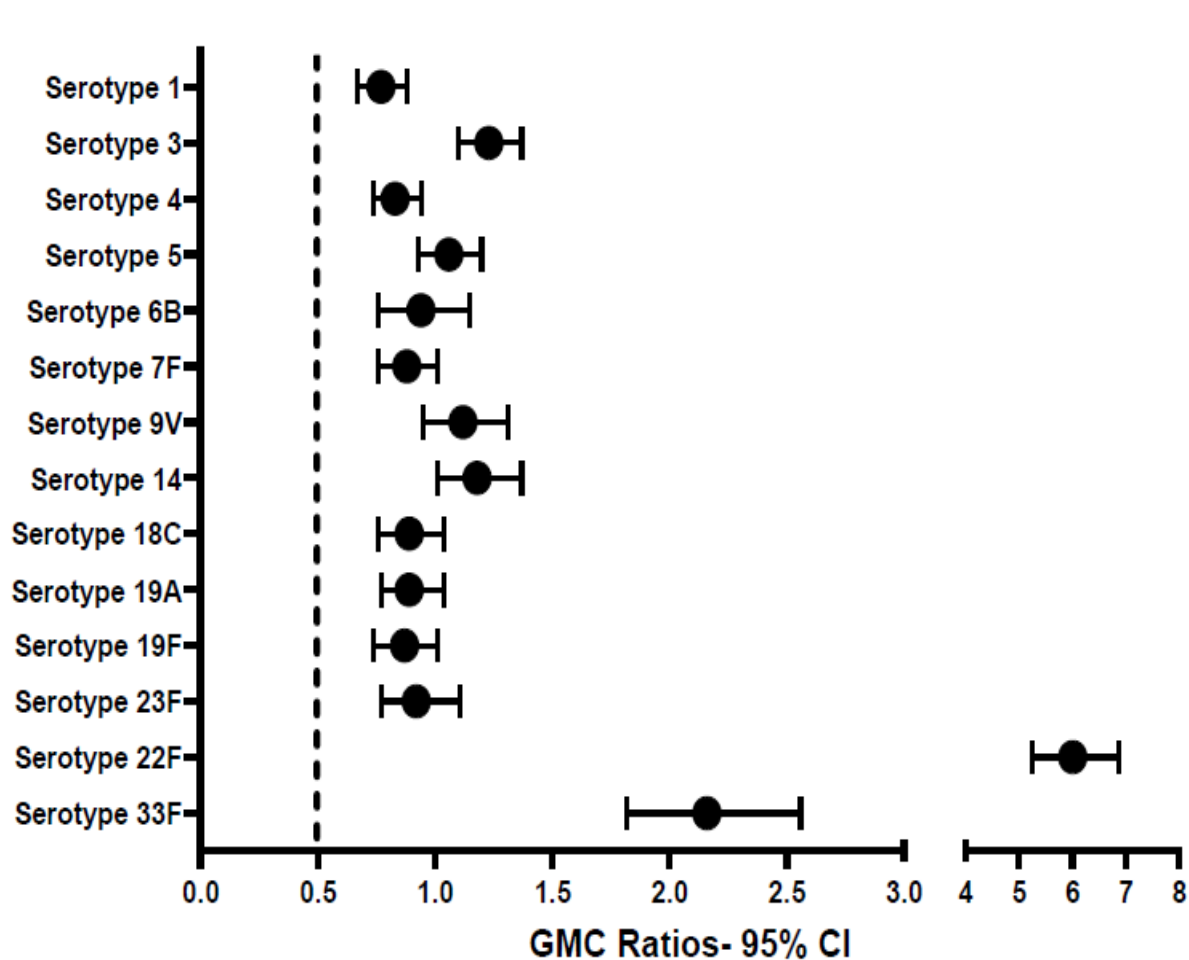
Serotypes	Percent seroresponse rate of BE-PCV-14 serotypes#	Percent seroresponse rate of PCV-13 serotypes#	Proportion of difference between groups (95% CI)
Serotype 1	90.60%	93.30%	-2.7 [-5.65 : 0.35]
Serotype 3	83.50%	77.00%	6.5 [2.08 : 10.85]
Serotype 4	93.10%	95.20%	-2.1 [-4.65 : 0.51]
Serotype 5	90.60%	89.90%	0.7 [-2.56 : 3.96]
Serotype 6B	76.30%	79.40%	-3.1 [-7.68 : 1.47]
Serotype 7F	95.80%	95.70%	0.1 [-2.12 : 2.33]
Serotype 9V	95.20%	93.30%	1.9 [-0.69 : 4.44]
Serotype 14	99.70%	100.00%	-0.3 [-0.75 : 0.13]
Serotype 18C	90.50%	93.30%	-2.8 [-5.82 : 0.20]
Serotype 19A	99.40%	99.50%	-0.1 [-0.96 : 0.67]
Serotype 19F	97.20%	97.90%	-0.7 [-2.43 : 0.97]
Serotype 23F	82.40%	85.10%	-2.8 [-6.84 : 1.29]
Serotype 22F*	94.10%	77% (serotype 3)	17.1 [13.21 : 20.94]
Serotype 33F*	73.20%	77% (serotype 3)	-3.8 [-8.60 : 0.94]

#Total number of study subjects included for analysing serotype specific seroresponsiveness in BE-PCV-14 group: n=641

#Total number of study subjects included for analysing serotype specific seroresponsiveness in BE-PCV-14 group: n=626

*For serotypes 22F and 33F (which are not present in PCV-13) seroresponse rates and GMC for the BE-PCV-14 group were compared with those for the serotype in the PCV-13 group with the lowest seroresponse rate (i.e. serotype 3).

Figure 2b: Geometric Mean Concentration ratios with 95% confidence intervals



Serotypes	BE-PCV-14: GMC	PCV-13: GMC	GMC ratio (95% CI)
Serotype 1	1.73	2.26	0.77 (0.67:0.88)
Serotype 3	0.85	0.7	1.23 (1.10:1.37)
Serotype 4	1.75	2.1	0.83 (0.74:0.94)
Serotype 5	1.48	1.4	1.06 (0.93:1.20)
Serotype 6B	1.69	1.8	0.94 (0.76:1.15)
Serotype 7F	2.89	3.3	0.88 (0.76:1.01)
Serotype 9V	3.03	2.72	1.12 (0.95:1.31)
Serotype 14	11.18	9.52	1.18 (1.01:1.37)
Serotype 18C	2.36	2.65	0.89 (0.76:1.04)
Serotype 19A	5.39	6.02	0.89 (0.77:1.04)
Serotype 19F	5.63	6.51	0.87 (0.74:1.01)
Serotype 23F	2.03	2.19	0.92 (0.77:1.11)
Serotype 22F*	4.18	0.7 (serotype 3)	6.01 (5.26:6.87)
Serotype 33F*	1.5	0.7 (serotype 3)	2.16 (1.82:2.56)

*For serotypes 22F and 33F (which are not included in PCV-13), GMC of the BE-PCV-14 group were compared with those for the serotype in the PCV-13 group with the lowest GMC (i.e. serotype 3).

Figure 3: Reverse cumulative distribution (RCD) curves of anti-PnCPS IgG antibody concentrations for 12 common serotypes between BE-PCV-14 and PCV-13.

