

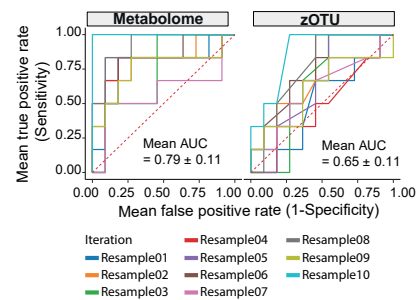
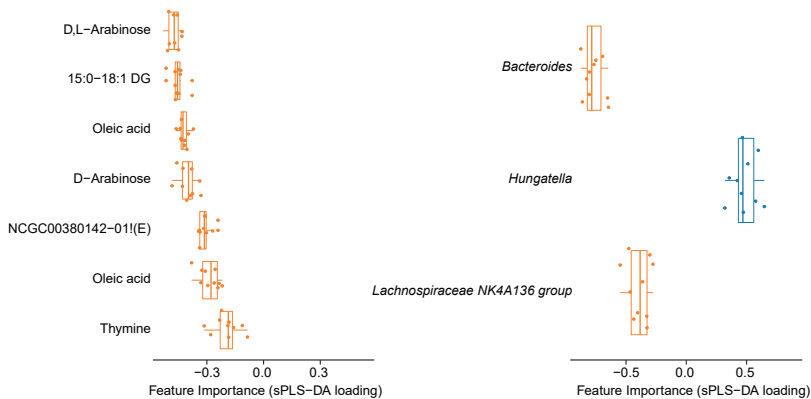
Extended Data Figure 1

890 **Extended Data Fig.1: Alpha-diversity in CD-EEN**

891 **A-C** Alpha-diversity plotted as Shannon effective number or Richness (number of zOTUs) for all samples from the
892 20 newly diagnosed pCD patients undergoing EEN therapy. **A** Shannon effective number plotted per patient over
893 time, patient colour code to be found in Fig 1. **B** Richness (number of zOTUs) in samples from patients in active or
894 inactive disease based on pga (physician global assessment, active = severe, moderate, mild, remission =
895 remission). **C** Richness (number of zOTUs) along EEN therapy in groups. pE = PreEEN, EE = EEN, PE = PostEEN.

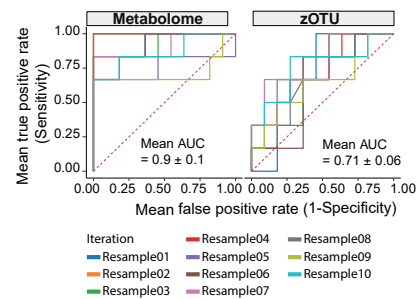
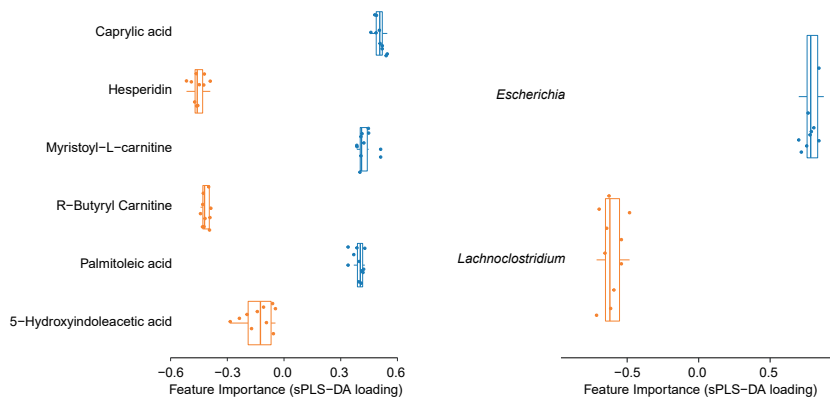
A Community 4

Associated to ■ EEN ■ PostEEN

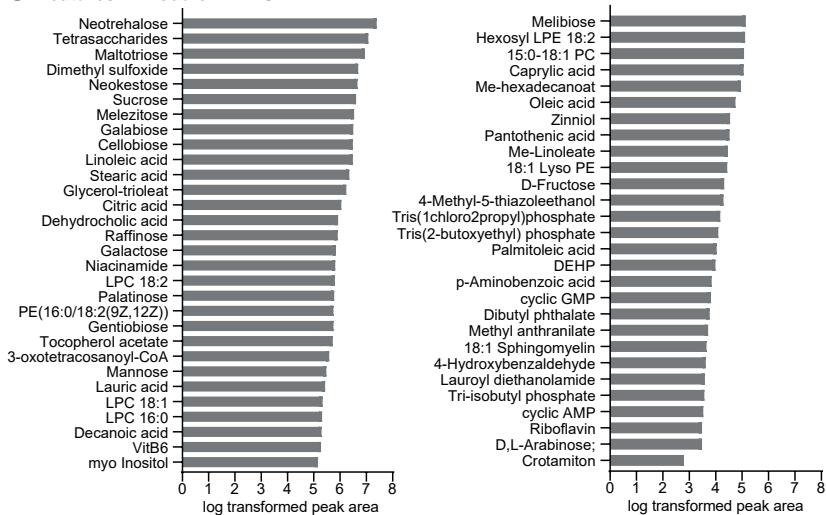


B Community 5

Associated to ■ EEN ■ PostEEN



C Features in Modulen IBD®



896 **Extended Data Fig.2: Data integration & identification of features of EEN:**

897 **A, B:** Community 4 and 5: Most important features (metabolites and zOTUs) for each community with feature
898 importance to PostEEN (<0, orange) and EEN (>0, blue). One dot represents the loading of the respective feature
899 for a single iteration of the cross-validation procedure (i.e. each iteration is trained on a (stratified) random subset
900 of all data points). ROC-curve calculation with 10 single iterations for metabolome and zOTU features, respectively.

901 **C** Identified features of Modulen IBD® from untargeted metabolomic analyses.

Extended Data Table 1

species_id	zotu	rank_product	corr	s_UHGG	EzbioCloud ID	Association in Network
102478	Zotu1		1	0.775323178 s__ <i>Bacteroides_B_dorei</i>	<i>Phocaeicola vulgatus</i> (99.52%)	
100032	Zotu10		1	0.977653818 s__ <i>Hungatella effluvii</i>	<i>Blautia luti</i> (100%)	EEN
100562	Zotu106		1	0.935416045 s__ <i>Lachnospira</i> sp000437735	<i>Lachnospira pectinoschiza</i> (100%)	
102478	Zotu11		2	0.631435539 s__ <i>Bacteroides_B_dorei</i>	<i>Phocaeicola vulgatus</i> (99.76%)	
101338	Zotu13		2	0.624156446 s__ <i>Blautia_A_wexlerae</i>	<i>Blautia luti</i> (100%)	PostEEN
101378	Zotu14		1	0.869232432 s__ <i>Bacteroides ovatus</i>	<i>Bacteroides ovatus</i> (100%)	
100032	Zotu15		2	0.65510351 s__ <i>Hungatella effluvii</i>	<i>Zhenhengia yiwuensis</i> (99.75%)	
101396	Zotu15		2	0.770024076 s__ <i>Absiella innocuum</i>	<i>Zhenhengia yiwuensis</i> (99.75%)	
102454	Zotu18		1	0.91747804 s__ <i>Akkermansia muciniphila</i>	<i>Akkermansia muciniphila</i> (100%)	
101302	Zotu19		2	0.392193391 s__ <i>Alistipes putredinis</i>	<i>Phocaeicola vulgatus</i> (99.29%)	
100196	Zotu2		1	0.852046159 s__ <i>Bacteroides thetaiotaomicron</i>	<i>Bacteroides thetaiotaomicron</i> (100%)	
101374	Zotu27		1	0.703733782 s__ <i>Faecalicatena torques</i>	<i>Ruminococcus torques</i> (100%)	EEN
102293	Zotu29		1	0.997297743 s__ <i>Prevotella copri</i>	<i>Prevotella copri</i> (99.29%)	
100179	Zotu31		1	0.779535274 s__	<i>Enterocloster aldensis</i> (99.5%)	EEN
102369	Zotu33		2	0.958081689 s__ <i>Clostridioides difficile</i>	<i>Clostridioides difficile</i> (99.75)	
101396	Zotu34		2	0.972906168 s__ <i>Absiella innocuum</i>	<i>Clostridium innocuum</i> (100%)	EEN
100014	Zotu36		1	0.933032786 s__ <i>Clostridium butyricum</i>	<i>Clostridium butyricum</i> (98.01%)	
102506	Zotu4		1	0.572645169 s__ <i>Escherichia coli_D</i>	<i>Escherichia</i> sp. (100%)	EEN
101400	Zotu46		1	0.931895179 s__ <i>Erysipelatoclostridium ramosum</i>	<i>Thomasclavelia ramosa</i> (99.77%)	EEN
101386	Zotu5		1	0.729073964 s__ <i>Clostridium_M_clostridioforme</i>	<i>Enterocloster bolteae</i> (100%)	EEN
101493	Zotu5		2	0.720217644 s__ <i>Clostridium_M bolteae</i>	<i>Enterocloster bolteae</i> (100%)	EEN
102293	Zotu52		2	0.997604941 s__ <i>Prevotella copri</i>	<i>Prevotella</i> sp. (99.05%)	
100074	Zotu55		2	0.983086476 s__ <i>Alistipes onderdonkii</i>	<i>Alistipes onderdonkii</i> (99.76%)	
101346	Zotu6		2	0.442113407 s__ <i>Bacteroides uniformis</i>	<i>Bacteroides uniformis</i> (99.76%)	
100243	Zotu67		2	0.548704475 s__ <i>Bacteroides_B massiliensis</i>	<i>Phocaeicola massiliensis</i> (99.53%)	
101380	Zotu7		1	0.863046936 s__ <i>Faecalicatena gnavus</i>	<i>Ruminococcus gnavus</i> (100%)	
101361	Zotu95		2	0.748568683 s__ <i>Sutterella wadsworthensis_B</i>	<i>Sutterella wadsworthensis</i> (100%)	

Extended Data Table 2

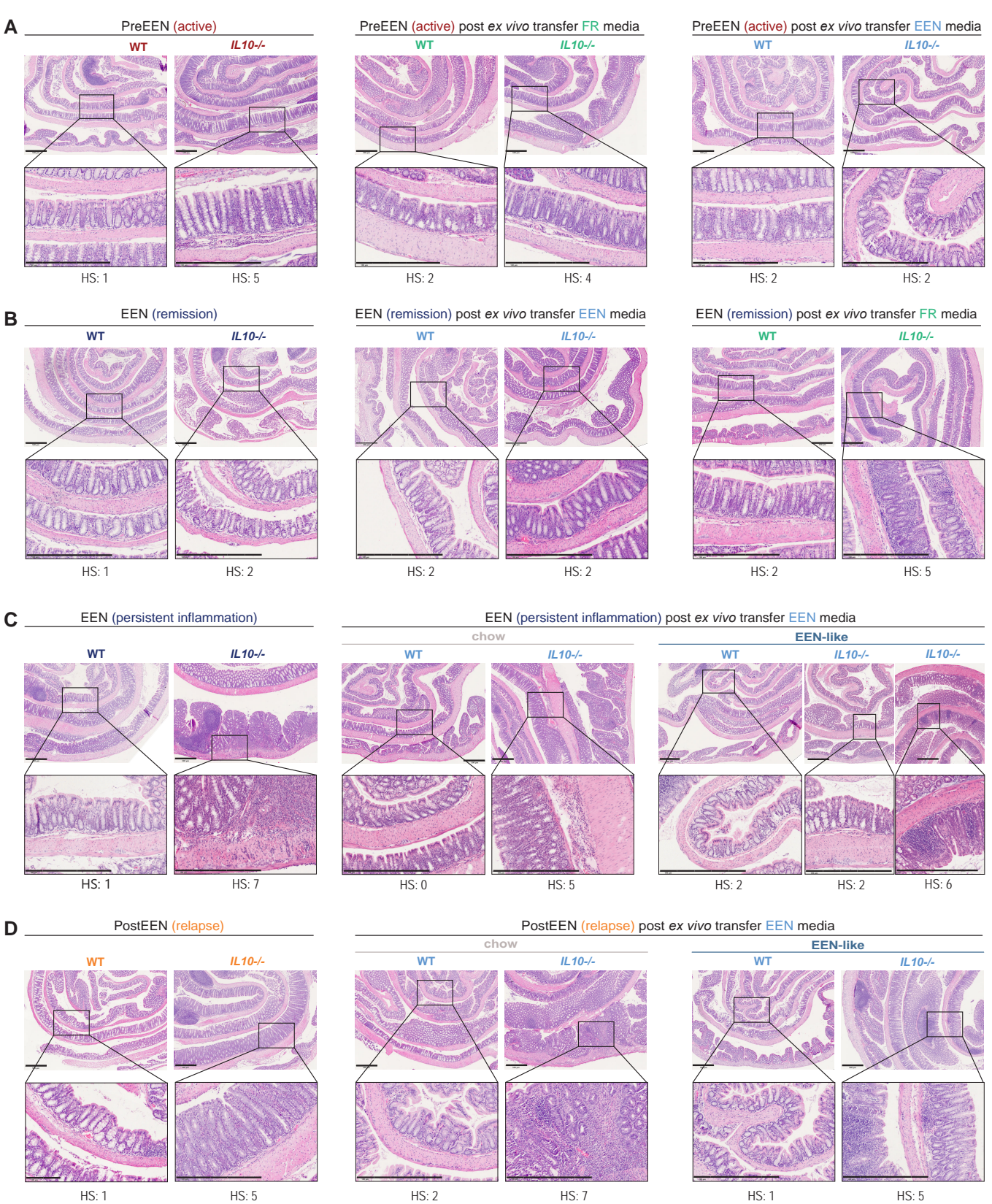
UHGG Species ID	ZOTU_match	indicator_score	species_log2_old_change	species_overall_mean_relative_abundance	num_intra-subject_sample_pairs	mean_pairwise_braycurtis_dissimilarity	UHGG Taxonomy	EzbioCloud ID	Association in Network
102478	Zotu1/ Zotu11	2.98	-0.63	0.11	149.00	0.30	s__ <i>Bacteroides_B_dorei</i>	<i>Phocaeicola vulgatus</i> (99.52%/ 99.76%)	
101338	Zotu13	2.41	2.43	0.02	146.00	0.40	s__ <i>Blautia_A_wexlerae</i>	<i>Blautia luti</i> (100%)	PostEEN
102528		2.24	3.35	0.01	123.00	0.43	s__ <i>Anaerostipes hadrus</i>		
101493	Zotu5	2.10	-1.51	0.02	187.00	0.49	s__ <i>Clostridium_M bolteae</i>	<i>Enterocloster bolteae</i> (100%)	EEN
101378	Zotu14	1.98	1.68	0.02	140.00	0.35	s__ <i>Bacteroides ovatus</i>	<i>Bacteroides ovatus</i> (100%)	
103682		1.91	-1.90	0.01	176.00	0.43	s__ <i>Ruthenibacterium lactatiformans</i>		
102545		1.77	2.17	0.02	111.00	0.39	s__ <i>Faecalibacterium prausnitzii_G</i>		
101396	Zotu34	1.72	-2.46	0.01	176.00	0.46	s__ <i>Absiella innocuum</i>	<i>Clostridium innocuum</i> (100%)	EEN
102506	Zotu4	1.43	-0.90	0.02	139.00	0.64	s__ <i>Escherichia coli_D</i>	<i>Escherichia</i> sp. (100%)	EEN
101346	Zotu6	0.99	1.25	0.05	158.00	0.11	s__ <i>Bacteroides uniformis</i>	<i>Bacteroides uniformis</i> (99.76%)	
101380	Zotu7	0.76	-0.39	0.02	201.00	0.44	s__ <i>Faecalicatena gnavus</i>	<i>Ruminococcus gnavus</i> (100%)	
100217		0.55	4.48	0.00	80.00	0.31	s__ <i>Acetatifactor</i> sp900066565		
100196	Zotu2	0.54	1.23	0.04	154.00	0.07	s__ <i>Bacteroides thetaiotaomicron</i>	<i>Bacteroides thetaiotaomicron</i> (100%)	
100133		0.43	4.61	0.01	69.00	0.21	s__ <i>Blautia_A</i> sp000433815		
100271		0.41	4.58	0.00	71.00	0.38	s__ <i>Roseburia inulinivorans</i>		
104158		0.39	8.11	0.01	35.00	0.23	s__ <i>Dialister invisus</i>		
102327		0.38	3.83	0.00	129.00	0.18	s__ <i>Oscillibacter</i> sp900066435		
102544		0.37	-1.37	0.00	192.00	0.40	s__ <i>Eggerthella lenta</i>		
100179	Zotu31	0.34	-0.92	0.01	160.00	0.29	g__ <i>Clostridium_M</i>	<i>Enterocloster aldensis</i> (99.5%)	EEN
101386	Zotu5	0.33	-0.66	0.01	123.00	0.36	s__ <i>Clostridium_M_clostridioforme</i>	<i>Enterocloster bolteae</i> (100%)	EEN

902 ***Extended Data Table 1: Matching of metagenomic and 16S results***

903 *Identified candidate matches where species (based on ubiquitous marker genes) and zOTU relative abundance*
904 *profiles were highly correlated across samples. 27 zOTUs were matched to one or more metagenomic species,*
905 *accounting for a median of 40% of relative abundance per sample.*

906 ***Extended Data Table 2: Identification of species with extensive strain turnover, large changes in relative***
907 ***abundance at the end of EEN, high mean relative abundance, and high prevalence***

908 *zOTUs were re-checked using the 16S-based ID tool of EzBioCloud⁶⁴ using the database update 2023.08.23,*
909 *reflecting all taxa published and accepted by IJSEM until April 2023. Indicator_score was calculated as =*
910 *|species_log2_fold_change|* species_overall_mean_relative_abundance* num_intrasubject_sample_pairs **
911 *mean_pairwise_braycurtis_dissimilarity*

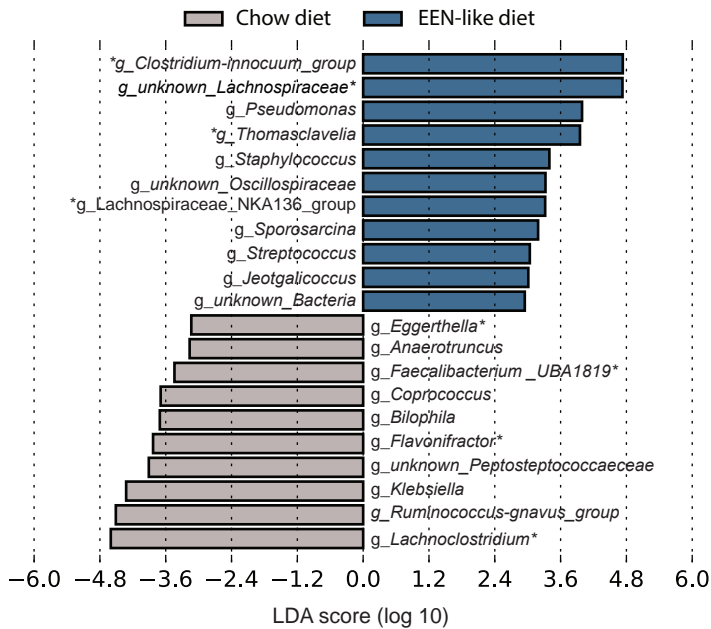


Extended Data Figure 3

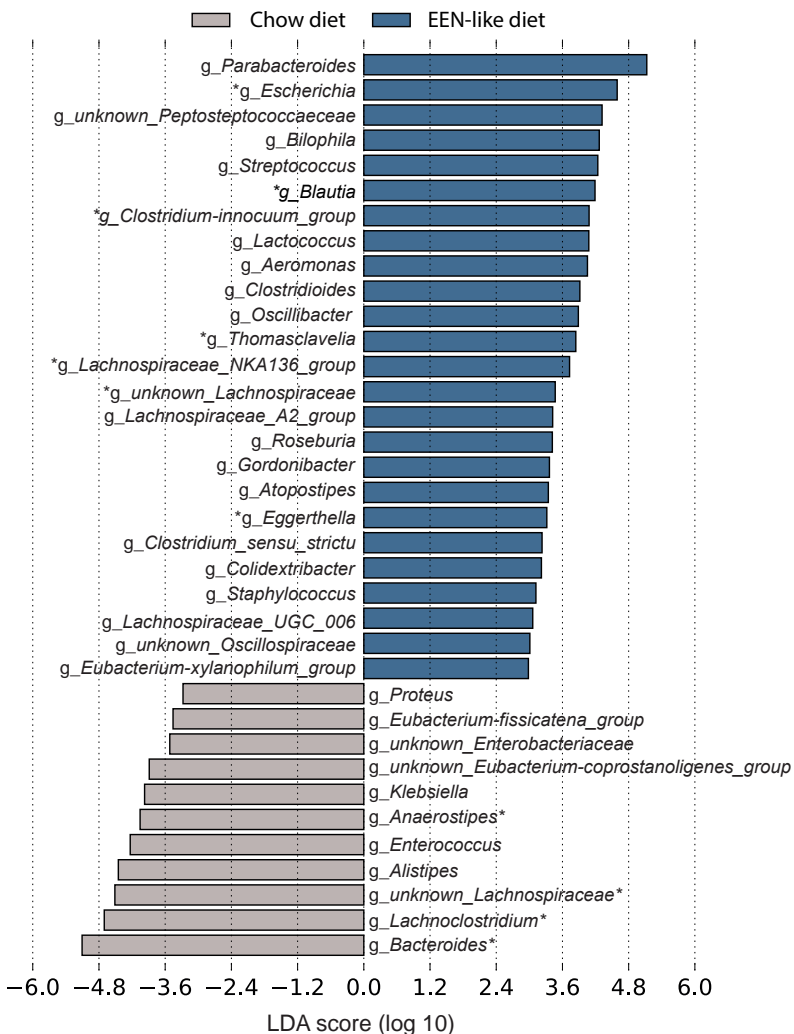
912 **Extended Data Fig.3: Histopathology of mouse transfers:**

913 **A-D:** Mouse transfer experiments: Representative (mean of group) H&E stained sections of colonic Swiss roles and
914 corresponding higher magnifications for IL10^{-/-} mice and respective controls (scale bars = 500 μM, HS =
915 histopathology score).

A Mouse colonization: EEN (persistent inflammation) post ex vivo EEN-like media



B Mouse colonization: PostEEN (relapse) post ex vivo EEN-like media



916 **Extended Data Fig.4: Differential abundant bacteria in EEN-like vs chow fed mice:**

917 **A** LEfSe (Linear discriminant analysis Effect Size) of differentially abundant bacteria at genus level in the post ex
918 vivo recipient mice of fermented EEN (persistent inflammation) fecal sample under EEN-like medium (mouse
919 colonization: Chow diet = mice received EEN (persistent inflammation) sample fermented under EEN medium on
920 chow diet; EEN-like diet = mice received EEN (persistent inflammation) and sample fermented under EEN medium
921 on EEN-like mouse diet. **B** LEfSe of differentially abundant bacteria at genus level in the post ex vivo recipient mice
922 of fermented PostEEN (relapse) and fecal sample under EEN-like medium (mouse colonization: Chow diet = mice
923 received PostEEN (relapse) sample fermented under EEN medium on chow diet; EEN-like diet = mice received
924 PostEEN (relapse) sample fermented under EEN medium on EEN-like mouse diet. * Indicates genera identified in
925 data integration network analyses (based on zOTUs).