

1 **SARS-CoV-2 serosurvey across multiple waves of the COVID-19 pandemic in New York City**  
2 **between 2020-2023**

3  
4

5 Juan Manuel Carreño<sup>1,2,\*</sup>, Abram L. Wagner<sup>3,\*</sup>, Brian Monahan<sup>1,2</sup>, Daniel Floda<sup>4</sup>, Ana S Gonzalez-  
6 Reiche<sup>4</sup>, Johnstone Tcheou<sup>1,2</sup>, Ariel Raskin<sup>1,2</sup>, Dominika Bielak<sup>1,2</sup>, Gagandeep Singh<sup>1,2</sup>, Sara  
7 Morris<sup>1,2</sup>, Miriam Fried<sup>1,2</sup>, Temima Yellin<sup>1,2</sup>, Leeba Sullivan<sup>1,2</sup>, PARIS study group<sup>#</sup>, Emilia Mia  
8 Sordillo<sup>5&</sup>, Aubree Gordon<sup>3,&</sup>, Harm van Bakel<sup>1,4,6&</sup>, Viviana Simon<sup>1,2,5,7,8,&</sup>, Florian Krammer<sup>1,2,5,&</sup>

9

10 <sup>1</sup>Department of Microbiology, Icahn School of Medicine at Mount Sinai, New York, NY, USA

11 <sup>2</sup>Center for Vaccine Research and Pandemic Preparedness (C-VaRPP), Icahn School of Medicine  
12 at Mount Sinai, New York, NY, USA

13 <sup>3</sup>Department of Epidemiology, School of Public Health, University of Michigan, 1415 Washington  
14 Heights, Ann Arbor, MI 48109, US

15 <sup>4</sup>Department of Genetics and Genomic Sciences, ISMMS, New York, NY, USA.

16 <sup>5</sup>Department of Pathology, Molecular and Cell Based Medicine, Icahn School of Medicine at  
17 Mount Sinai, New York, NY, USA

18 <sup>6</sup>Icahn Genomics Institute, ISMMS, New York, NY, USA.

19 <sup>7</sup>Division of Infectious Diseases, Department of Medicine, Icahn School of Medicine at Mount  
20 Sinai, New York, NY, USA

21 <sup>8</sup>The Global Health and Emerging Pathogens Institute, Icahn School of Medicine at Mount Sinai,  
22 New York, NY, USA

23

24

25

26 \*Contributed equally

27 &Corresponding authors: Emilia Mia Sordillo (Emilia.sordillo@mountsinai.org), Aubree Gordon  
28 (gordonal@umich.edu), Harm van Bakel (harm.vanbakel@mssm.edu), Viviana Simon  
29 (viviana.simon@mssm.edu), Florian Krammer (florian.krammer@mssm.edu)

30 #PARIS study group: Fatima Amanat, Guha Asthagiri Arunkumar, Christina Capuano, Jordan  
31 Ehrenhaus, Shelcie Fabre, Matthew M Hernandez, Kaijun Jiang, Brian Lerman, Meagan  
32 McMahan, Daniel Stadlbauer, Jessica Tan, Catherine Teo, Kathryn Twyman,

33

34

35

36 **ABSTRACT**

37 Sero-monitoring provides context to the epidemiology of severe acute respiratory syndrome  
38 coronavirus 2 (SARS-CoV-2) infections and changes in population immunity following vaccine  
39 introduction. Here, we describe results of a cross-sectional hospital-based study of anti-spike  
40 seroprevalence in New York City (NYC) from February 2020 to July 2022, and a follow-up period  
41 from August 2023 to October 2023. Samples from 55,092 individuals, spanning five  
42 epidemiological waves were analyzed. Prevalence ratios (PR) were obtained using Poisson  
43 regression. Anti-spike antibody levels increased gradually over the first two waves, with a sharp  
44 increase during the 3<sup>rd</sup> wave coinciding with SARS-CoV-2 vaccination in NYC resulting in  
45 seroprevalence levels >90% by July 2022. Our data provide insights into the dynamic changes in  
46 immunity occurring in a large and diverse metropolitan community faced with a new viral  
47 pathogen and reflects the patterns of antibody responses as the pandemic transitions into an  
48 endemic stage.

49

50

51 **Keywords: COVID-19, SARS-CoV-2, spike, serosurvey, seroprevalence, antibody titers**

## 52 **Introduction**

53  
54 Coronavirus disease 2019 (COVID-19) has severely impacted human health worldwide. Within  
55 the United States, New York City emerged as an early epicenter of infection and cases, with the  
56 first reported case on February 29, 2020<sup>1</sup>. However, public reporting of cases over time was  
57 inconsistent due to limited testing capacity early in the pandemic<sup>1</sup>. Moreover, testing was  
58 differentially available to groups depending on their socioeconomic status<sup>2</sup>, impacting  
59 understanding of the course of the epidemic in different populations.

60  
61 Severe acute respiratory syndrome coronavirus 2 (SARS-CoV-2), the causative agent of COVID-  
62 19, has rapidly evolved to increase its transmission potential and to evade immunity derived from  
63 prior infection and vaccination, contributing to several waves of infections<sup>3</sup>. The emergence of  
64 viral variants capable of overcoming pre-established immune responses is mainly attributed to  
65 mutations in the spike surface glycoprotein. During the first wave of infections, the wild type  
66 (WT) virus acquired the D614G mutation that increased virus infectivity and transmissibility<sup>4, 5</sup>.  
67 These strains prevailed for several months until the second wave of infections caused by the  
68 Alpha, Beta and Gamma variants occurred in different parts of the world. A 3<sup>rd</sup> wave of infections  
69 was caused by the Delta variant which showed higher transmissibility and enhanced severe  
70 disease. A significant reduction of viral neutralization by sera from convalescent or vaccinated  
71 individuals was detected<sup>6, 7</sup>. In December 2021, the emergence of the Omicron BA.1 strain, which  
72 carried over 30 spike protein mutations, resulted in a 4<sup>th</sup> wave of infections. Since then, distinct  
73 Omicron sub-lineages have circulated worldwide, including BA.2, BA.5, BQ.1, BQ.1.1, BF.7, and  
74 more recently XBB.1, XBB.1.5, BA.2.86, EG.5.1, JN.1, and derived variants.

75  
76 Throughout the pandemic, monitoring the level of immunity in the population has been crucial  
77 for public health. Sero-monitoring has guided safety measures and vaccination policies  
78 worldwide to reduce viral infection, transmission, and severe disease<sup>8</sup>. Laboratories can measure  
79 binding antibodies to the spike (S) protein, which indicates past infection or vaccination, or  
80 antibodies to the nucleoprotein (NP), which indicates a past infection. The level of anti-SARS-  
81 CoV-2 antibodies and T cell responses correlate with an individual's capacity to combat the virus

82 and with protection against infection and disease<sup>9, 10</sup>. Importantly, binding antibody levels  
83 correlate with the number of prior exposures, and with the level of neutralizing antibodies<sup>11, 12</sup>.  
84 Hence, sero-surveillance for SARS-CoV-2 provides an estimate of the level of immunity in the  
85 population and reflects the patterns of the pandemic. Moreover, existing case reporting systems  
86 for COVID-19 are limited by changing testing availability and behaviors over time.

87  
88 Here, we report the results of a prospective, hospital-based cross-sectional study of anti-S and  
89 anti-NP sero-monitoring from the beginning of February 2020 through July 2022, and follow-up  
90 measurements in August-October 2023. We describe the longitudinal seroprevalence in two  
91 different groups: a) an 'urgent care' group that was enriched for acute cases of COVID-19 early  
92 during the pandemic, and b) a 'routine care' group, resembling the general population, as  
93 previously described<sup>8</sup>. Stratification by zip code allowed us to study the geographical distribution  
94 of the seroprevalence and antibody titers in residents of NYC throughout the pandemic.

## 95 96 **Methods**

97 **Study participants and human samples.** Sample collection and testing started on February 9<sup>th</sup>,  
98 2020 and ended on July 18<sup>th</sup>, 2022. Follow up testing started on August 28<sup>st</sup> 2023 and ended on  
99 October 2<sup>nd</sup> 2023. Collection was performed on a weekly basis (n=608/week on average) and in a  
100 blinded manner. Plasma was collected from ethylenediaminetetraacetic acid (EDTA)-treated  
101 blood specimens that remained from standard-of-care testing at the Mount Sinai Hospital (MSH)  
102 Blood Bank. Samples were sorted to collection week, visit location and practice including:  
103 OB/GYN, labor and deliveries; oncology; surgery; cardiology; emergency department; and other  
104 related hospital admissions. Up to 152 specimens at each location in a defined collection week  
105 were randomly selected.

106  
107 During sample aliquoting, specimens were captured into a coded database with randomly  
108 assigned identifiers and verified patient categories. Additional specimens obtained from the same  
109 patient within the same week were not considered for analysis. Samples collected 7 days apart or  
110 more from the first specimen collected were considered as independent samples of the



111 population. Typically, 67-314 specimens were selected weekly from the ‘routine care’ group  
112 (OB/GYN, labor and deliveries, oncology, surgery, and cardiology) and 67 to 314 samples from  
113 the ‘urgent care’ group consisting of specimens from patient visits to the emergency department  
114 and urgent care. Some individuals had a PCR test to diagnose SARS-CoV-2 infection. The  
115 analyses of samples collected during the week ending on February 9<sup>th</sup> 2020 to July 5<sup>th</sup> 2020 were  
116 reported previously<sup>8</sup>. We incorporate all samples with additional demographics data in the  
117 current analysis in order to describe seroprevalence and antibody titers since the beginning of the  
118 pandemic. We stratify our analyses by ‘urgent care’ vs ‘routine care’ groups to capture the fact  
119 that access to non-urgent medical care was limited at the beginning of the pandemic<sup>13</sup>.

120

121 Specimen metadata included information on the individuals’ age, sex, race, insurance status, and  
122 whether they had received a COVID-19 vaccination prior to specimen collection. Due to the low  
123 number of children in our study, we limit our main analysis to adults, and divided them into 18-  
124 44 years, 45-64 years, and 65+ years age groups. Information on race was based on self-reported  
125 categories (e.g., Asian and Pacific Islander, African American, White, Other, and unknown).  
126 Information on ethnicity (e.g., Hispanic or non-Hispanic) was not consistently available and, thus,  
127 not included in our analysis. Medicaid and Medicare were collapsed into a public insurance  
128 category. All data used in this study was anonymized and recoded through the use of an honest  
129 broker following local regulations.

130

131 **Epidemiological waves.** We categorized samples by time into 5 epidemiological waves, that  
132 correspond to successive peaks in COVID-19 incidence in NYC: Wave 1 (February 9<sup>th</sup> to August  
133 30<sup>th</sup>, 2020; ancestral SARS-CoV-2 and D614G mutant circulating), Wave 2 (August 31<sup>st</sup>, 2020, to  
134 June 20<sup>th</sup>, 2021; Iota (B.1.529) and Alpha (B.1.1.7) circulating), Wave 3 (June 21<sup>st</sup> to October 31<sup>st</sup>,  
135 2021; Delta (B.1.617.2) circulating), Wave 4 (November 1<sup>st</sup>, 2021, to March 6<sup>th</sup>, 2022; Delta  
136 (B.1.617.2) and Omicron BA.1 (B.1.1.529.1) circulating), and Wave 5 (March 7<sup>th</sup> to July 18<sup>th</sup>, 2022;  
137 Omicron BA.2 (B.1.1.529.2) and Omicron BA.5 (B.1.1.529.5) circulating). Epidemiological waves  
138 and circulating variants are depicted in Figures 1A and 1B respectively. The follow up period  
139 (August 28<sup>st</sup> 2023 - October 2<sup>nd</sup> 2023), was not associated to a specific wave timeframe, and was

140 included to assess the maintenance of seroprevalence and durability of spike binding antibody  
141 titers.

142

143 **Geographical maps.** The neighborhood tabulation area (NTA) map created by the Department  
144 of City Planning and sourced from NYC OpenData was used as the base geometry for our data  
145 analyses. For each NTA, the average of the common logarithm of spike titer values was calculated  
146 and plotted as a shaded map using the ggplot2 and sf packages in R. For plots showing  
147 progression over time, slices were taken from each data range and plotted as separate facets.

148

149 **Statistical analysis.** We describe the distribution of results graphically and through proportions,  
150 stratified by 'urgent care' vs 'routine care' groups. Visualizations of antibody prevalence and  
151 titers were generated using Matplotlib (3.7.2), Seaborn (0.11.2), Pandas (1.5.3), Numpy (1.26.0),  
152 and Scipy (1.11.3) packages within python 3.11.5. Geographical charts, and live data explorer  
153 were generated using R version 4.3.2, with the packages sf (1.0.14), DT (0.31), zoo (1.8.12), Hmisc  
154 (5.1.1), shiny (1.8.0), scico (1.5.0), ggpubr (0.6.0), bsplus (0.1.4), forcats (1.0.0), ggplot2 (3.4.4),  
155 ggbreak (0.1.2), patchwork (1.1.3), lubridate (1.9.3), hrbrthemes (0.8.0), data.table (1.14.10),  
156 shinyWidgets (0.8.0), RColorBrewer (1.1.3), shinydashboard (0.7.2), and shinycssloaders (1.0.0).

157

158 Based on *a priori* considerations, we include age, sex, race, and insurance status in our  
159 multivariable models: age representing differential humoral response to infection and increased  
160 risk of severe disease<sup>14, 15</sup> and therefore a marker of potentially enhanced social distancing  
161 behaviors<sup>16</sup>, sex linked to health seeking behaviors<sup>17</sup> as well as gynecological appointments, and  
162 race and insurance status measures of poverty, health seeking behaviors, and exposure to SARS-  
163 CoV-2 through a variety of mechanisms<sup>18</sup>.

164

165 Differences in seropositivity by demographic group over time were assessed through  
166 multivariable, Poisson regression models that included robust variance estimates<sup>19</sup>. These models  
167 output prevalence ratios (PR) and 95% confidence intervals (CI), which were interpreted relative  
168 to a reference group. These models estimated the direct effect of age, sex, race, and insurance

169 status on seropositivity. These models are initially stratified by epidemiological wave. To  
170 estimate changes in seropositivity by demographic group across wave, we also specified a larger  
171 model, where an interaction term was placed between wave and every demographic variable.  
172 The p-value from this interaction term indicates if there has been a significant shift in differences  
173 across wave, for a given demographic variable.

174  
175 We conduct several sensitivity analyses. In a separate analysis, we also include vaccination, but  
176 limit the timing to data collected after January 11, 2021, when the vaccine started becoming  
177 available to certain age groups in the general population<sup>20</sup>. And in a third set of models, we  
178 exclude individuals 65+ based on their ability to access Medicare. The regression models were  
179 implanted in SAS version 9.4 (SAS Institute, Cary, NC, USA). We used an alpha level of 0.05 to  
180 assess significance.

181  
182 **Ethical approval.** The study protocol HS 20-00308 was reviewed by the Mount Sinai Health  
183 System Institutional Review Board, Icahn School of Medicine at Mount Sinai, and it was exempt  
184 from human research as defined by regulations of the Department of Health and Human Services  
185 (45 CFR 46. 104).

186  
187 **Data availability.** All data are available under ImmPort accession #xxx.

## 188 189 **Results**

190 Overall, there are 55,092 individuals sampled between February 9, 2020 and July 18, 2022: 21,075  
191 from urgent care group and 34,017 from the routine care group. Of these 882 were children <18,  
192 and 54,210 were adults. The demographic distribution among adults is shown in **Table 1**. In the  
193 routine care groups, a plurality of individuals were in the 18-44 year age group (16,499, 49%), a  
194 majority female (23,155, 69%), a plurality self-identified as White (14,971, 45%), and about half  
195 had private insurance (16,386, 49%). The distribution of these variables for children is shown in  
196 **Supplementary Table 1**. COVID-19 vaccination began in January 2021 in the general population  
197 and varied across a number of groups, including race. Uptake was faster in Asian and Pacific

198 Islanders and White New Yorkers compared to African Americans (e.g., at wave 3, uptake in  
199 these three groups was 63%, 55%, and 50%, respectively) (**Supplementary Table 5**).

200 We measured spike antibody prevalence and titers over five epidemiological waves based on  
201 average case counts (7-day) of SARS-CoV-2 infections in New York City, reported by the NYC  
202 Department of Health and Mental Hygiene (NYC DOHMH) (**Figure 1A**). Viral variant prevalence  
203 through this period continuously changed, from the initial circulating of ancestral variants to the  
204 appearance of variants of the Omicron lineage (**Figure 1B**). Overall, among adults in the routine  
205 care group, spike protein seropositivity increased from an average of 13% in wave 1, to 36%, 76%,  
206 88%, and 93% in the following four waves (**Figure 1, C-D; Supplementary Table 2**), consistent  
207 with seroprevalence estimates reported by the NYC Department of Health and Mental Hygiene  
208 (DOHMH)<sup>21</sup>. A sharp increase in antibody prevalence was detected during waves 2 and 3, starting  
209 on February 2021. This increase was corresponded temporally with expanded availability of  
210 SARS-CoV-2 vaccinations, the emergence of the Iota, Alpha, and Delta variants, and changes in  
211 public health measures. Importantly, antibody prevalence was maintained during the follow up  
212 period from August 28<sup>st</sup> 2023 to October 2<sup>nd</sup> 2023 (**Figure 1, C-D**). Vaccinated individuals showed  
213 significantly higher antibody prevalence than non-vaccinated as early as January 2021, with the  
214 largest differences just prior to and during wave 3 (**Figure 2, G-H**) owing to incomplete  
215 vaccination in the earlier periods and unvaccinated individuals experiencing high infection rates  
216 during wave 3. By wave 5, spike protein seropositivity was uniformly high ( $\geq 90\%$  in all  
217 categories). Similar trends were observed in populations stratified by gender and age, with no  
218 significant differences among intra-group strata (**Figure 2, A-D**). Differences by race were  
219 observed, for example, 14% of African Americans and 18% of those within the Other racial  
220 category were seropositive in wave 1, versus 7% of Asians and Pacific Islanders (**Figure 2, E-F**).

221  
222 The multivariable Poisson regression model of spike protein seropositivity reveals several trends  
223 within demographic group and across time (**Table 2**). At wave 1, seropositivity was higher in  
224 younger age groups compared to older (1.66 times higher in those 18-44 vs 65+, 95% CI: 1.41, 1.96).  
225 By wave 5, this had largely attenuated (interaction  $p$ -value  $< 0.0001$ ). Larger disparities by race  
226 were also observed at the beginning of the pandemic. Compared to White New Yorkers, Black

227 (prevalence ratios (PR): 1.24, 95% CI: 0.94, 1.63) and Other New Yorkers (PR: 1.64, 95% CI: 1.44,  
228 1.88) had higher seropositivity, and Asians and Pacific Islanders had relatively low seropositivity  
229 (PR: 0.67, 95% CI: 0.51, 0.87). During waves 3 and 4, some of these associations reversed, with  
230 lower seropositivity in Black and Other groups compared to White New Yorkers. Around a  
231 similar or earlier time (waves 2 and 3), vaccination coverage was relatively low among Black  
232 compared to White New Yorkers (Supplementary Table 5). An analysis of spike protein  
233 seropositivity across racial ethnic groups stratified by vaccination status reveals significant  
234 differences among the unvaccinated (Supplementary Table 6), with seropositivity relatively high  
235 in waves 1 through 2 and then relatively low in waves 3 and 4 in Black New Yorkers. However,  
236 among the vaccinated, seropositivity remained equivalent across racial groups. Indeed, in the  
237 models with vaccination status that cover periods once the vaccine had been rolled out  
238 (Supplementary Table 3), this factor emerges as a significant contributor to seropositivity, with  
239 a larger impact in wave 2, where seropositivity was 1.95 times higher among those vaccinated  
240 compared to unvaccinated (95% CI: 1.87, 2.03), while it was only 1.04 times higher in wave 5 (95%  
241 CI: 1.02, 1.07) (interaction  $p$ -value <0.0001).

242  
243 Anti-spike antibody titers in seropositive individuals were induced at moderate to high levels  
244 during the first waves of infections, with modest antibody decay over time (Figure 1, E-F;  
245 Supplementary Figure 1). Amid the second wave, titers increased gradually reaching the highest  
246 levels during wave 5. No significant differences were detected when titers were stratified by  
247 gender, age or race (Figure 3, A-F). As expected, the introduction of vaccination during wave 2  
248 resulted in increased antibody prevalence and titers at the time of sample collection, while  
249 individuals without a record of vaccination displayed significantly lower antibody prevalence  
250 through waves 2, 3 and 4 (Figures 2 and 3, G-H). These differences narrowed over time, likely  
251 due to multiple infections in unvaccinated individuals. Moreover, differences in antibody  
252 prevalence and titers in vaccinated vs non-vaccinated individuals were preserved when  
253 stratification was based on sex, age, and race (Supplementary Figures 2-7).

254

255 For select weeks (July 6<sup>th</sup>-July 14<sup>th</sup> 2020, February 15<sup>th</sup>-March 1<sup>st</sup> 2021, June 1<sup>st</sup> – June 14<sup>th</sup> 2021,  
256 August 16<sup>th</sup> – August 30<sup>th</sup> 2021, May 23<sup>rd</sup> – May 30<sup>th</sup> 2022, August 28<sup>th</sup> – Oct 2<sup>nd</sup> 2023) we also  
257 measured seropositivity and titers for nucleoprotein (NP). Although initially in 2020 NP  
258 seropositivity was similar to the spike seropositivity, this changed in 2021 as NP seropositivity  
259 fell behind spike positivity by a relatively large margin (**Figure 4**). This was influenced not only  
260 by vaccination (which only induces anti-spike antibodies) but also by waning of NP antibodies  
261 over time and the low induction of NP antibodies during breakthrough infections. Our estimates  
262 during mid 2021 (June 1<sup>st</sup> – June 14<sup>st</sup>, 57% (95% CI = 53.1–60.9) to late 2021 (August 16<sup>th</sup> – August  
263 30<sup>th</sup>, 54% (95% CI = 50.5–57.5)) are higher than the reported nationwide NP seroprevalence  
264 (December 2021 33.5% (95% CI = 33.1–34.0))<sup>22</sup>. These differences may be due to discrepancies in  
265 the time points of antibody measurements. Antibodies induced or boosted during the Delta wave  
266 may have waned over the subsequent months, due to the relatively fast decay rates of NP  
267 antibodies induced by infection<sup>11</sup>. Alternatively, differences in the sensitivity of the methods used  
268 or higher COVID-19 incidence in NYC compared to nationwide levels<sup>23</sup> could have played a role.

269  
270 To analyze the geographical distribution of antibody prevalence and titers through the five  
271 boroughs of NYC (Manhattan, Brooklyn, Queens, The Bronx, and Staten Island), we used  
272 neighborhood tabulation areas (NTAs) to build maps of the city divided into 216 NTAs (**Figure**  
273 **5**). We detected higher antibody prevalence in areas located outside Manhattan during all waves  
274 of infections, that were more evident during waves 1-3, when antibody prevalence was lower  
275 (**Figure 5, A-C**). Importantly, seroprevalence reached high levels (above 80%) almost  
276 homogenously throughout the five boroughs by wave 5 (**Figure 5, E**). Likewise, higher titers were  
277 detected in boroughs other than Manhattan (**Figure 6**), with areas reaching the highest titers  
278 located in Queens (**Figure 6, E**).

## 279 280 **Discussion**

281  
282 Serosurveillance systems provide means to describe population patterns in infection and  
283 vaccination over time. Overall, in a hospital-based study in New York City, we previously  
284 described a sharp increase in anti-spike antibody prevalence early during 2020 due to SARS-CoV-



285 2 infections<sup>8</sup>. By May 2021, seroprevalence reached levels above 70% due to both infections, and  
286 vaccination programs. Here we report on the continued sero-monitoring efforts to capture  
287 antibody prevalence and titers over the course of the pandemic. We show that antibody  
288 prevalence gradually increased over time, reaching levels above 90% by January 2022.  
289 Seroprevalence and titers were maintained over time, with similar trends observed during a  
290 follow up period in August-October, 2023, likely due to constant antigenic exposures by vaccine  
291 boosters and breakthrough infections. Moreover, we analyzed the geographical distribution of  
292 antibody prevalence and titers through the five boroughs of NYC. Finally, we analyzed NP titers  
293 – indicative of immunity derived by infection – at discreet timepoints during the pandemic.

294  
295 Our seroprevalence estimates for the most part overlap with estimates from the NYC DOHMH.  
296 However, there are differences during the early phase of the pandemic and later during waves 4  
297 and 5. Specifically, the NYC DOHMH reports a large proportion (>50%) of seropositive  
298 individuals in wave 1 who were tested for SARS-CoV\_2 by PCR. Individuals seeking testing were  
299 probably more likely to be infected and potentially already antibody positive given the long  
300 initial incubation time<sup>1</sup>. This is similar to what we observed in the urgent care group that was  
301 biased towards SARS-CoV-2 positives in the first wave. In more recent waves, seropositivity is  
302 lower according to the NYC DOHMH than in our serosurveillance study. This could reflect  
303 differences in the assays used or differences in the study populations.

304  
305 The COVID-19 pandemic intensified racial and economic disparities in health<sup>24</sup>. Our data  
306 collected in the early waves, indicate that seropositivity was relatively high in adults self-  
307 identifying as Black and Others, pointing to higher infection rates in essential workers lacking  
308 the possibility to socially distance or due socioeconomic constraints leading to more crowded  
309 living conditions<sup>25, 26</sup>. Our serosurveillance system revealed other sociodemographic trends by  
310 age. These reflect epidemiological risk patterns and vaccination policies. For example, early in the  
311 pandemic, seropositivity was greater in younger adults, in accordance with risk messaging  
312 directed towards older adults. As vaccination became available and was prioritized for older  
313 ages<sup>27</sup>, seropositivity became relatively higher in older age groups.

314

315 The spike antibody response induced towards the emerging Omicron sub-lineages is mostly  
316 cross-reactive with ancestral strains<sup>28</sup>, hence the seroprevalence estimates presented here are  
317 likely to be preserved towards the spike of Omicron sub-variants. Although the neutralization  
318 capacity of sera from individuals exposed to ancestral SARS-CoV-2 antigens through infection or  
319 vaccination is severely reduced against Omicron strains<sup>29</sup>, non-neutralizing antibodies may  
320 protect through alternative mechanisms mediated by Fc-dependent antibody effector functions<sup>30</sup>  
321 and the presence of antibodies likely also indicates the presence of T-cell responses which largely  
322 cross-react between different variants of concern <sup>31</sup>. Dissecting the contribution of non-  
323 neutralizing cross-reactive antibodies upon exposure to emerging variants of the Omicron lineage  
324 will be important to have a broader picture of an individual's immunity.

325

326 Our analysis has some limitations. Our catchment area was tied to individuals visiting the Mount  
327 Sinai Health System, and we may have limited scope in generalizing outside the NYC  
328 metropolitan area. Residual, de-identified samples are collected, which impedes following  
329 individuals longitudinally. Representation of samples by different zones was limited, which  
330 limited the geographical distribution analysis.

331

## 332 **Conclusions**

333 New York City was an early epicenter of the COVID-19 pandemic. Leveraging a hospital-based  
334 serosurveillance system, we detect several patterns in line with the epidemiology of SARS-CoV-  
335 2 and the roll-out of the COVID-19 vaccines. Notably, by early 2022, virtually the entire  
336 population had some evidence of COVID-19 seropositivity. Importantly our data clearly show  
337 increasing overall seropositivity in the general population as SARS-CoV-2 vaccines became  
338 available. The overall sustained high level of implied immunity in the total population also is  
339 noteworthy. Finally, we believe our data set provides a great resource for additional modelling  
340 studies and could help to predict immunity and seroprevalence scenarios during future  
341 pandemics.

342





344 **Acknowledgements**

345 This effort was supported by the Serological Sciences Network (SeroNet) in part with Federal  
346 funds from the National Cancer Institute, National Institutes of Health, under Contract No.  
347 75N91019D00024, Task Order No. 75N91021F00001. The content of this publication does not  
348 necessarily reflect the views or policies of the Department of Health and Human Services, nor  
349 does mention of trade names, commercial products or organizations imply endorsement by the  
350 U.S. Government. This work was also partially funded by the Centers of Excellence for Influenza  
351 Research and Surveillance (CEIRS, contract # HHSN272201400008C), the Centers of Excellence  
352 for Influenza Research and Response (CEIRR, contract # 75N93021C00014), by the Collaborative  
353 Influenza Vaccine Innovation Centers (CIVICs contract # 75N93019C00051) and by institutional  
354 funds.

355

356 **Conflict of interest**

357 The Icahn School of Medicine at Mount Sinai has filed patent applications relating to SARS-CoV-  
358 2 serological assays and NDV-based SARS-CoV-2 vaccines which list Florian Krammer as co-  
359 inventor. Dr. Simon is listed on the SARS-CoV-2 serological assays patent. Mount Sinai has spun  
360 out a company, Kantaro, to market serological tests for SARSCoV-2. Dr. Krammer has consulted  
361 for Merck, Seqirus, CureVac and Pfizer in the past, and is currently consulting for Pfizer, 3rd Rock  
362 Ventures, GSK and Avimex and he is a co-founder and scientific advisory board member of  
363 CastleVax. The Krammer laboratory has been collaborating with Pfizer on animal models for  
364 SARS-CoV-2.

365

366 **Author contributions**

367 F.K., V.S., H.v.B., A.G. and E.M.S. conceived and designed the study. H.v.B. wrote and  
368 maintained the Institutional Review Board protocol. J.T., A.R., D.B., G.S., S.M., M.F., T.Y., and L.S.  
369 performed the serological assays. J.M.C. and F.K. supervised serological assays. D.B., S.M, and  
370 B.M. collected, organized and aliquoted plasma samples. G.S. produced and purified  
371 recombinant proteins. J.M.C., J.T., B.M., and A.L.W. collected and analyzed the data. J.M.C., B.M.,  
372 and D.F. generated figures. J.M.C. and A.L.W. wrote original manuscript draft. All authors edited  
373 and approved the manuscript.

374 **References**

375

376 1. Thompson, C.N. *et al.* COVID-19 Outbreak - New York City, February 29-June 1, 2020.  
377 *MMWR Morb Mortal Wkly Rep* **69**, 1725-1729 (2020).

378

379 2. Dalva-Baird, N.P., Alobuia, W.M., Bendavid, E. & Bhattacharya, J. Racial and ethnic  
380 inequities in the early distribution of U.S. COVID-19 testing sites and mortality. *Eur J*  
381 *Clin Invest* **51**, e13669 (2021).

382

383 3. Carabelli, A.M. *et al.* SARS-CoV-2 variant biology: immune escape, transmission and  
384 fitness. *Nat Rev Microbiol* **21**, 162-177 (2023).

385

386 4. Hou, Y.J. *et al.* SARS-CoV-2 D614G variant exhibits efficient replication ex vivo and  
387 transmission in vivo. *Science* **370**, 1464-1468 (2020).

388

389 5. Korber, B. *et al.* Tracking Changes in SARS-CoV-2 Spike: Evidence that D614G Increases  
390 Infectivity of the COVID-19 Virus. *Cell* **182**, 812-827 e819 (2020).

391

392 6. Carreno, J.M. *et al.* Evidence for retained spike-binding and neutralizing activity against  
393 emerging SARS-CoV-2 variants in serum of COVID-19 mRNA vaccine recipients.  
394 *EBioMedicine* **73**, 103626 (2021).

395

396 7. Lucas, C. *et al.* Impact of circulating SARS-CoV-2 variants on mRNA vaccine-induced  
397 immunity. *Nature* **600**, 523-529 (2021).

398

399 8. Stadlbauer, D. *et al.* Repeated cross-sectional sero-monitoring of SARS-CoV-2 in New  
400 York City. *Nature* **590**, 146-150 (2021).

401

402 9. Houry, D.S. *et al.* Neutralizing antibody levels are highly predictive of immune  
403 protection from symptomatic SARS-CoV-2 infection. *Nat Med* **27**, 1205-1211 (2021).

404

405 10. Gilbert, P.B. *et al.* Immune correlates analysis of the mRNA-1273 COVID-19 vaccine  
406 efficacy clinical trial. *Science* **375**, 43-50 (2022).

407

408 11. Carreno, J.M. *et al.* Longitudinal analysis of severe acute respiratory syndrome  
409 coronavirus 2 seroprevalence using multiple serology platforms. *iScience* **24**, 102937  
410 (2021).

411

412 12. Singh, G. *et al.* Binding and avidity signatures of polyclonal sera from individuals with  
413 different exposure histories to SARS-CoV-2 infection, vaccination, and Omicron  
414 breakthrough infections. *J Infect Dis* (2023).

415

416 13. Schimmel, J., Vargas-Torres, C., Genes, N., Probst, M.A. & Manini, A.F. Changes in  
417 alcohol-related hospital visits during COVID-19 in New York City. *Addiction* **116**, 3525-  
418 3530 (2021).

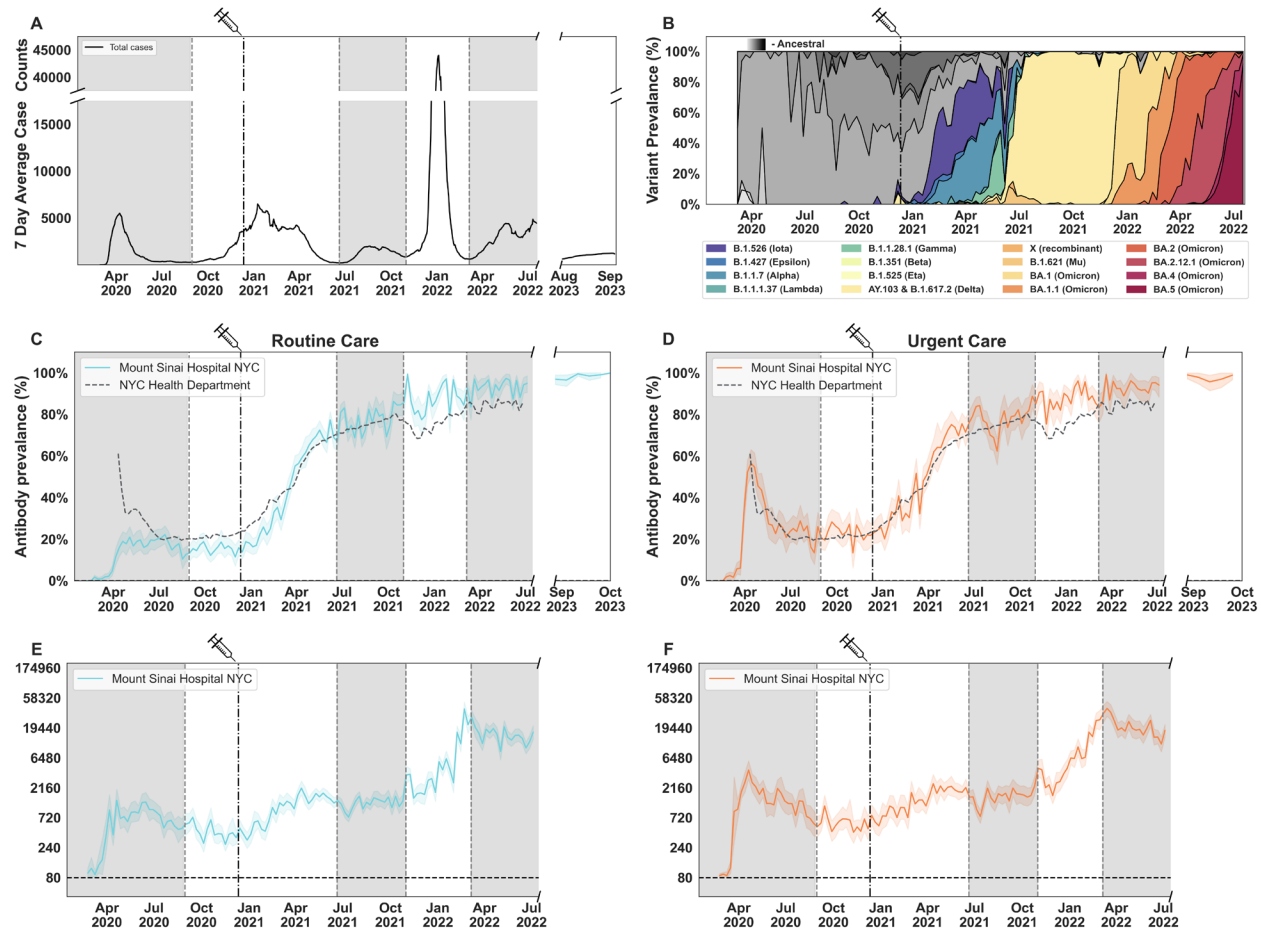
419

- 420 14. Zhang, J.J., Dong, X., Liu, G.H. & Gao, Y.D. Risk and Protective Factors for COVID-19  
421 Morbidity, Severity, and Mortality. *Clin Rev Allergy Immunol* **64**, 90-107 (2023).  
422
- 423 15. Aziz, H. *et al.* Antibody Response to SARS-CoV-2 in Relation to the Contributing Factors  
424 in COVID-19 Patients. *Viral Immunol* **35**, 142-149 (2022).  
425
- 426 16. Masters, N.B. *et al.* Social distancing in response to the novel coronavirus (COVID-19) in  
427 the United States. *PLoS One* **15**, e0239025 (2020).  
428
- 429 17. Currie, D. & Wiesenbergs, S. Promoting women's health-seeking behavior: research and  
430 the empowerment of women. *Health Care Women Int* **24**, 880-899 (2003).  
431
- 432 18. De, P.K. Beyond race: Impacts of non-racial perceived discrimination on health access  
433 and outcomes in New York City. *PLoS One* **15**, e0239482 (2020).  
434
- 435 19. Spiegelman, D. & Hertzmark, E. Easy SAS calculations for risk or prevalence ratios and  
436 differences. *Am J Epidemiol* **162**, 199-200 (2005).  
437
- 438 20. Warren, C.M. *et al.* Assessment of Allergic and Anaphylactic Reactions to mRNA  
439 COVID-19 Vaccines With Confirmatory Testing in a US Regional Health System. *JAMA*  
440 *Netw Open* **4**, e2125524 (2021).  
441
- 442 21. Department, N.Y.C.H. COVID-19: Data. 2023 [cited 2023 May 25th] Available from:  
443 <https://www.nyc.gov/site/doh/covid/covid-19-data.page>  
444
- 445 22. Clarke, K.E.N. *et al.* Seroprevalence of Infection-Induced SARS-CoV-2 Antibodies -  
446 United States, September 2021-February 2022. *MMWR Morb Mortal Wkly Rep* **71**, 606-608  
447 (2022).  
448
- 449 23. Do, D.P. & Frank, R. Unequal burdens: assessing the determinants of elevated COVID-  
450 19 case and death rates in New York City's racial/ethnic minority neighbourhoods. *J*  
451 *Epidemiol Community Health* (2020).  
452
- 453 24. Lopez, L., Hart, L.H. & Katz, M.H. Racial and Ethnic Health Disparities Related to  
454 COVID-19. *JAMA* **325**, 719-720 (2021).  
455
- 456 25. Honein, M.A. *et al.* Summary of Guidance for Public Health Strategies to Address High  
457 Levels of Community Transmission of SARS-CoV-2 and Related Deaths, December 2020.  
458 *MMWR Morb Mortal Wkly Rep* **69**, 1860-1867 (2020).  
459
- 460 26. Lieberman-Cribbin, W., Galanti, M. & Shaman, J. Socioeconomic Disparities in Severe  
461 Acute Respiratory Syndrome Coronavirus 2 Serological Testing and Positivity in New  
462 York City. *Open Forum Infect Dis* **8**, ofab534 (2021).  
463
- 464 27. A., C.D. Select New York state phase 1b groups are now eligible for COVID-19  
465 vaccination. 2021 [cited 2023 August 25th] Available from:

466  
467  
468  
469  
470  
471  
472  
473  
474  
475  
476  
477  
478  
479  
480

<https://www.nyc.gov/assets/doh/downloads/pdf/han/advisory/2021/covid-19-vaccine-1b-eligible-01112021.pdf>

28. Carreno, J.M., Singh, G., Simon, V., Krammer, F. & group, P.V.I.s. Bivalent COVID-19 booster vaccines and the absence of BA.5-specific antibodies. *Lancet Microbe* (2023).
29. Carreno, J.M. *et al.* Activity of convalescent and vaccine serum against SARS-CoV-2 Omicron. *Nature* **602**, 682-688 (2022).
30. Zhang, A. *et al.* Beyond neutralization: Fc-dependent antibody effector functions in SARS-CoV-2 infection. *Nat Rev Immunol*, 1-16 (2022).
31. Tarke, A. *et al.* SARS-CoV-2 vaccination induces immunological T cell memory able to cross-recognize variants from Alpha to Omicron. *Cell* **185**, 847-859.e811 (2022).



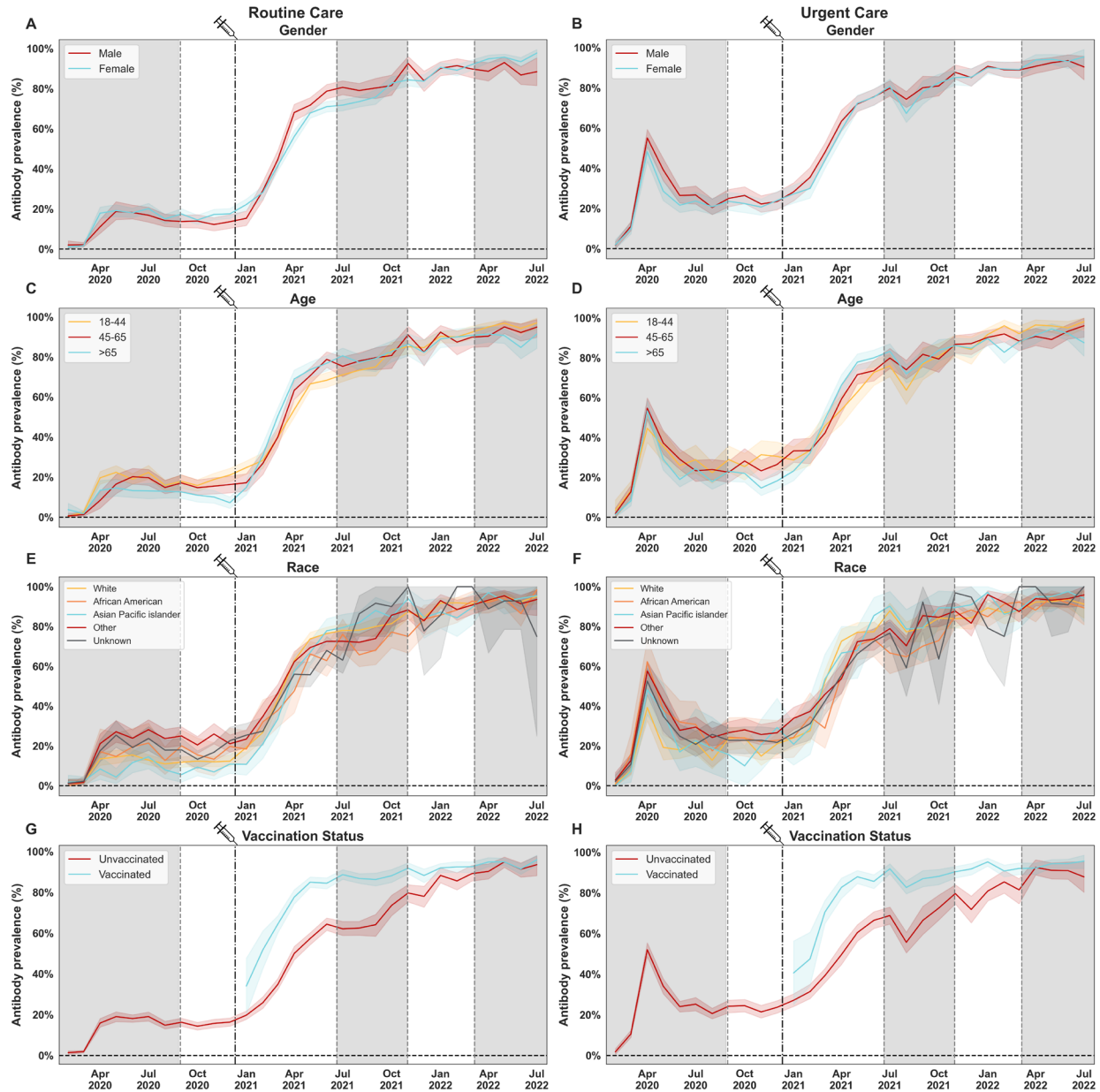
481  
482  
483  
484  
485  
486  
487  
488

**Figure 1.** SARS-CoV-2 spike binding antibody prevalence and titers in the Routine care and Urgent care groups at a Mount Sinai Hospital in New York City (NYC). Average case counts (7-day) of SARS-CoV-2 infections in New York City reported by the NYC Department of Health and Mental Hygiene (NYC DOHMH) (A). Main circulating SARS-CoV-2 lineages based on data from the Pathogen Surveillance Program at Mount Sinai (B). Antibody prevalence (C, D) and titers (E, F) in the Routine Care (left column, blue lines) and Urgent Care (right column, orange lines) groups, measured between February 9<sup>th</sup> 2020 to July 18<sup>th</sup> 2022, and seroprevalence measured between August 21<sup>st</sup> 2023 to

489 October 2<sup>nd</sup> 2023. Charts are fitted with a bootstrapped confidence interval based on random resampling of results to  
490 compute an estimate of the 95% confidence interval of the mean. In **(B)**, lineages before the emergence of variants of  
491 concern (VOCs) are shown in greyscale, while VOCs are shown in color. NYC DOHMH antibody prevalence data is  
492 shown in **C-D** for reference, denoted with a dashed line. The date on which the first FDA-authorized SARS-CoV-2  
493 vaccine became available in NYC is indicated by the vertical dotted line and syringe. Alternating shaded areas in **C-F**  
494 denote the five successive epidemiological waves of infection in NYC.

495  
496  
497  
498  
499  
500  
501  
502  
503

It is made available under a [CC-BY-NC-ND 4.0 International license](https://creativecommons.org/licenses/by-nc-nd/4.0/).

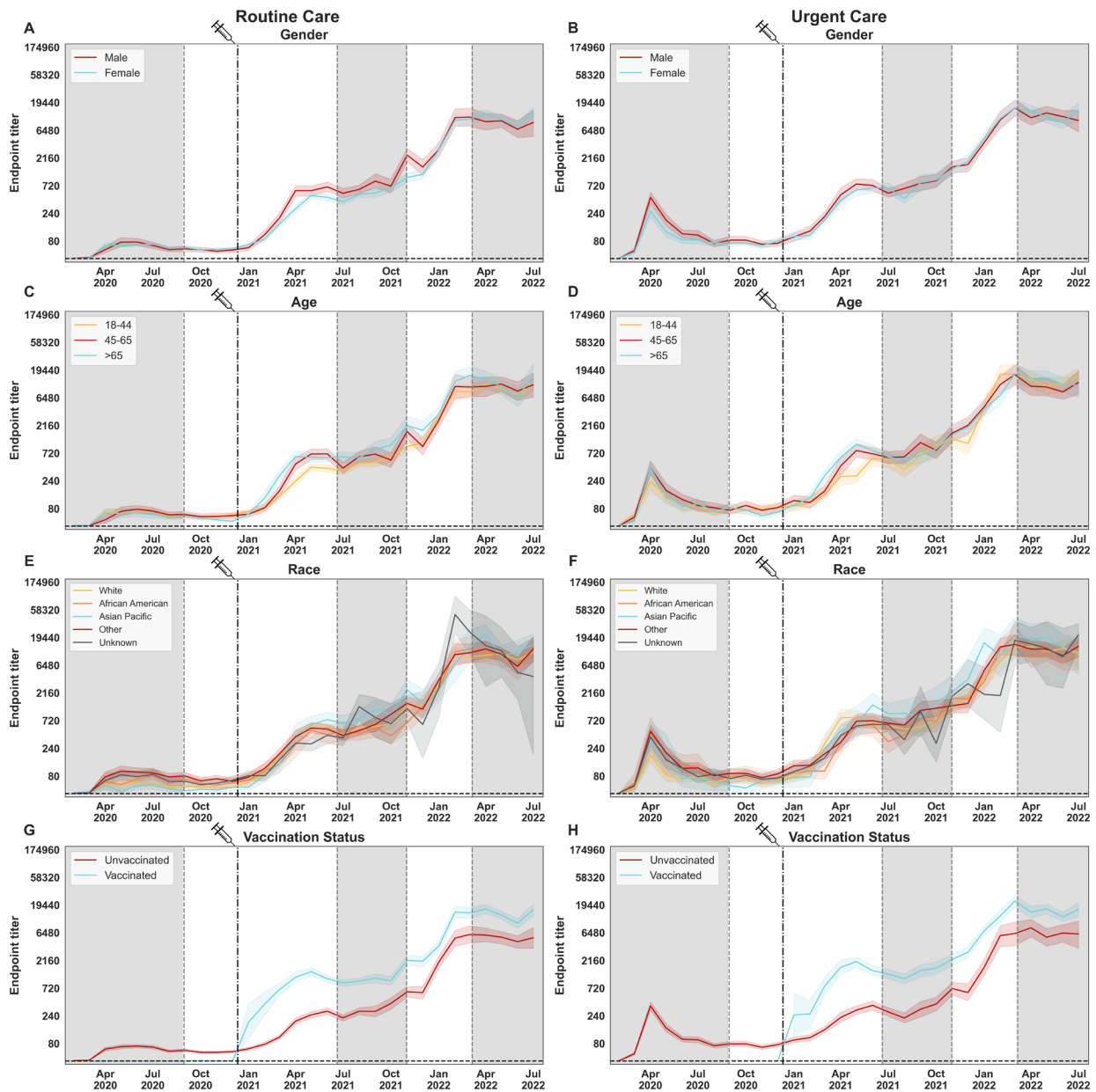


504  
505  
506  
507  
508  
509  
510  
511  
512  
513  
514  
515  
516  
517

**Figure 2.** SARS-CoV-2 spike antibody prevalence stratified by demographic groups and vaccination status. Antibody prevalence in the Routine Care (left column), and Urgent Care (right column) groups, measured between February 9<sup>th</sup> 2020 to July 18<sup>th</sup> 2022, and stratified by gender (A, B), age (C, D), race (E, F), and vaccination status at the time of sample collection (G, H) is shown. Charts are fitted with a bootstrapped confidence interval based on random resampling of results to compute an estimate of the 95% confidence interval of the mean. A, B. Gender stratification: males, females. C, D. Categorical age levels: 18-44, 45-65, >65. Individuals <17 are not shown in this analysis. E, F. Race stratification: White, African American, Asian and Pacific islander, Other, unknown. G, H. The date on which the first FDA-authorized SARS-CoV-2 vaccine became available in NYC is indicated by the vertical dotted line and syringe. Vaccination status was assessed at time of sample collection and does not reflect vaccination rates in NYC or within our patient population.



518  
519

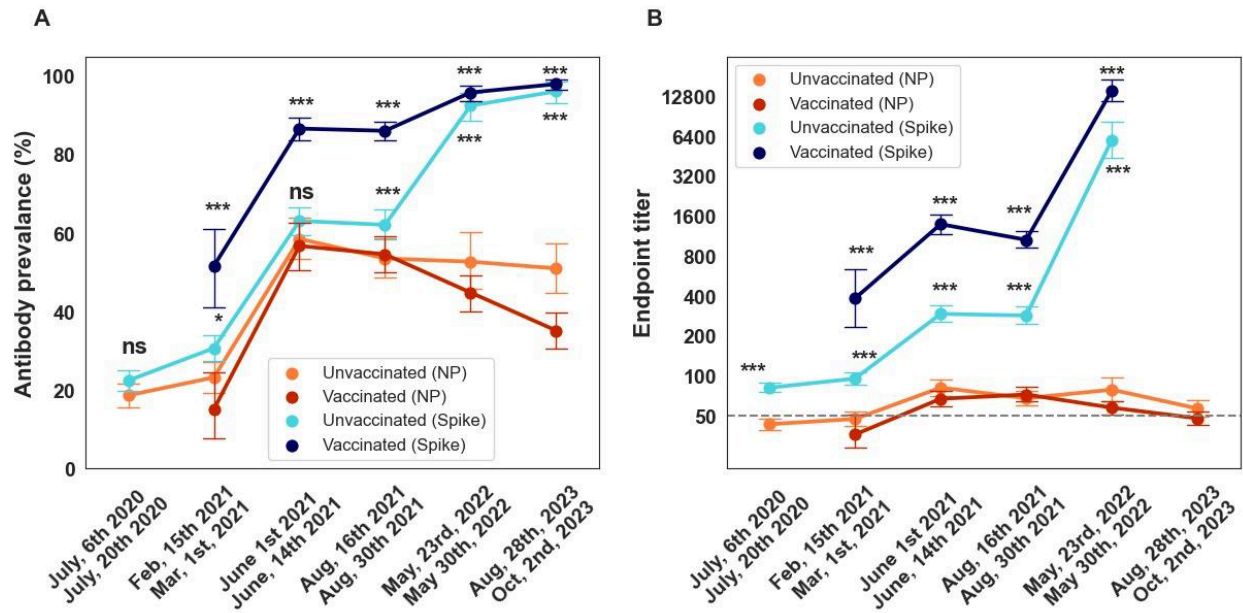


520  
521  
522  
523  
524  
525  
526  
527  
528  
529  
530  
531  
532

**Figure 3.** SARS-CoV-2 spike antibody titers by demographic groups and vaccination status. SARS-CoV-2 spike antibody prevalence in the Routine Care (left column), and Urgent care (right column) groups measured between February 9<sup>th</sup> 2020 to July 18<sup>th</sup> 2022 stratified by gender (A, B), age (C, D), race (E, F), and vaccination status at the time of sample collection (G, H). Charts are fitted with a bootstrapped confidence interval based on random resampling of results to compute an estimate of the 95% confidence interval of the mean. A, B. Gender stratification: males, females. C, D. Categorical age levels: 18-44, 45-65, >65. Individuals <17 not shown in this analysis. E, F. Race stratification: White, African American, Asian and Pacific islander, Other, unknown. G, H. The date on which the first FDA-authorized SARS-CoV-2 vaccine became available in NYC is indicated by the vertical dotted line and syringe. Vaccination status was assessed at time of sample collection and does not reflect vaccination rates in NYC or within our patient population.



533



534

535

536

537

538

539

540

541

542

543

544

545

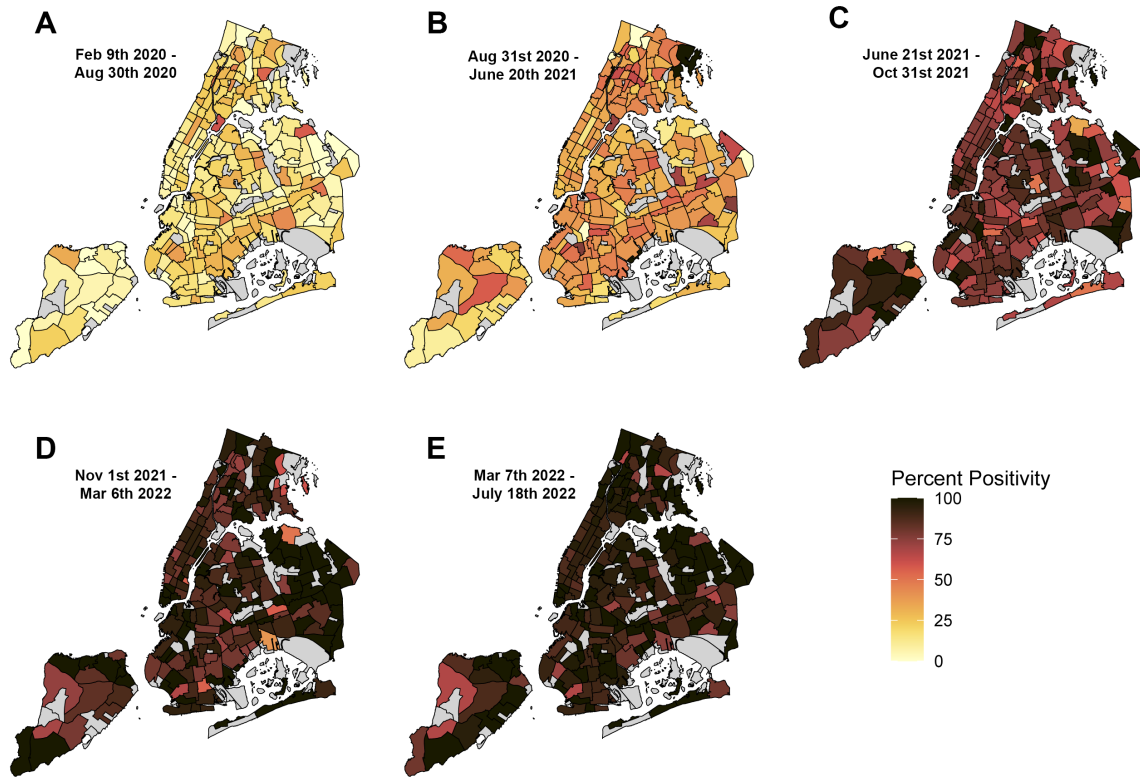
**Figure 4.** SARS-CoV-2 nucleoprotein (NP) and spike (S) antibody prevalence and titers over six sampling periods (2-week duration) through the course of the pandemic. NP and S antibody prevalence (**A**) and titers (**B**) in patients attending a Mount Sinai Hospital in New York City are shown. Data stratified by vaccination status, assessed at the time of sample collection. Sampling time points: July 6<sup>th</sup> - July 20<sup>th</sup>, 2020; February 15<sup>th</sup> - March 1<sup>st</sup>, 2021; June 1<sup>st</sup> - June 14<sup>th</sup>, 2021; August 16<sup>th</sup> - August 30<sup>th</sup>, 2021; May 23<sup>rd</sup> - May 30<sup>th</sup>, 2022; Aug 28<sup>th</sup> - Oct 2<sup>nd</sup>, 2023. Antibody prevalence (%) plus 95% confidence intervals are shown in **A**. Geometric mean of endpoint titers plus 95% confidence intervals are shown in **B**. Limit of detection (LoD) is indicated by the horizontal dotted line. Statistically significant differences between NP and S values are indicated as follows: ns, not significant; \* <0.05, \*\* <0.01, \*\*\* <0.001 (Chi squared test for antibody prevalence, and T test for Endpoint titer)"

546

547

548

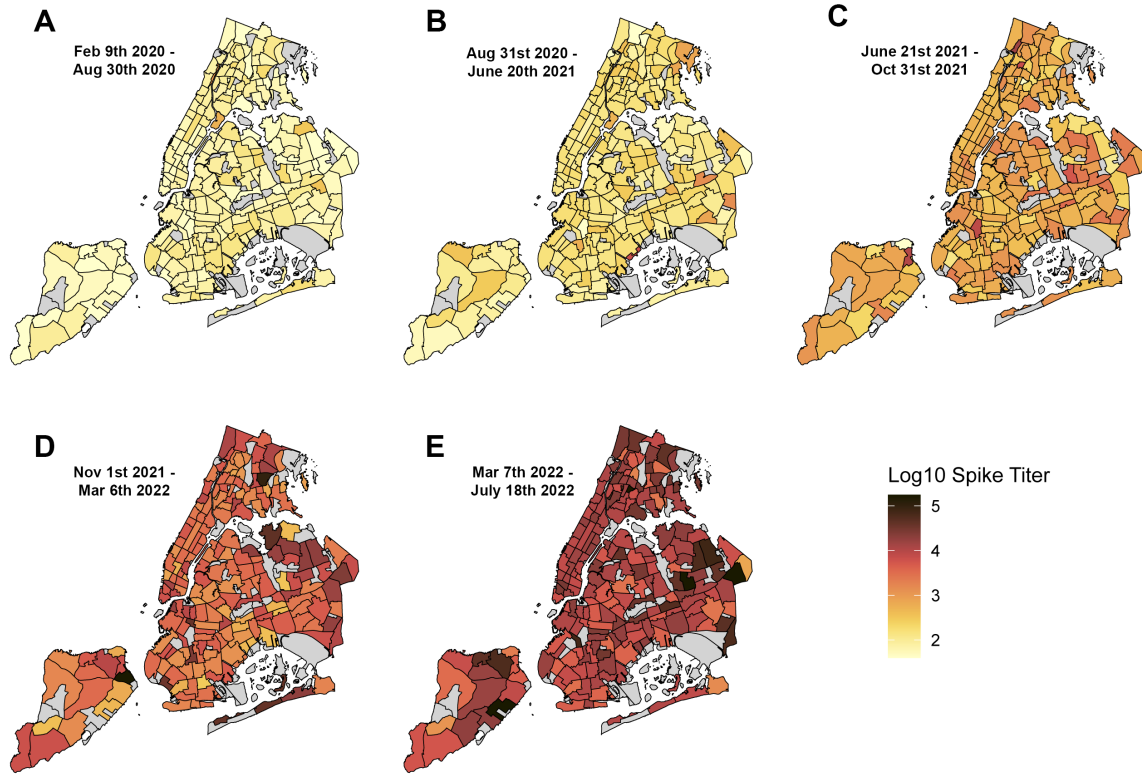
549



550  
551  
552  
553  
554  
555  
556  
557  
558  
559  
560  
561  
562  
563

**Figure 5.** Geographical distribution of SARS-CoV-2 spike antibody prevalence during five epidemiological waves of COVID-19 in residents of New York City (NYC). SARS-CoV-2 spike IgG prevalence measured in patients from the five boroughs of NYC (Manhattan, Brooklyn, Queens, The Bronx, and Staten Island) attending to a Mount Sinai Hospital in NYC are shown. 5 epidemiological waves corresponding to successive peaks of COVID-19 incidence in NYC are shown. **A.** Wave 1 (February 9<sup>th</sup> to August 30<sup>th</sup>, 2020). **B.** Wave 2 (August 31<sup>st</sup>, 2020, to June 20<sup>th</sup>, 2021). **C.** Wave 3 (June 21<sup>st</sup> to October 31<sup>st</sup>, 2021). **D.** Wave 4 (November 1<sup>st</sup>, 2021, to March 6<sup>th</sup>, 2022). **E.** Wave 5 (March 7<sup>th</sup> to July 18<sup>th</sup>, 2022). Antibody prevalence is expressed as percent positivity within neighborhood tabulation areas. Areas with less than 10 specimens are shaded grey. Color gradient depicts percent positivity (0 to 100%).

564



565

566

567

568

569

570

571

572

573

574

575

576

577

578

579

580

581

582

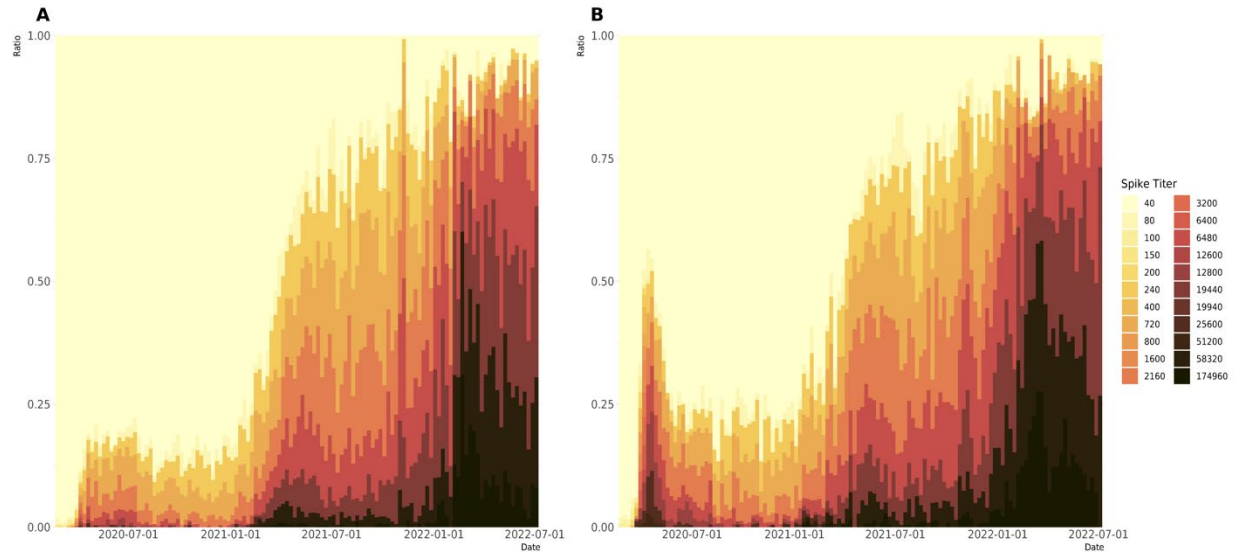
583

584

585

**Figure 6.** Geographical distribution of SARS-CoV-2 spike antibody titers during five epidemiological waves of COVID-19 in residents of New York City (NYC). SARS-CoV-2 spike IgG titer measured in patients from the five boroughs of NYC (Manhattan, Brooklyn, Queens, The Bronx, and Staten Island) attending to a Mount Sinai Hospital in NYC are shown. 5 epidemiological waves corresponding to successive peaks of COVID-19 incidence are shown. **A.** Wave 1 (February 9<sup>th</sup> to August 30<sup>th</sup>, 2020). **B.** Wave 2 (August 31<sup>st</sup>, 2020, to June 20<sup>th</sup>, 2021). **C.** Wave 3 (June 21<sup>st</sup> to October 31<sup>st</sup>, 2021). **D.** Wave 4 (November 1<sup>st</sup>, 2021, to March 6<sup>th</sup>, 2022). **E.** Wave 5 (March 7<sup>th</sup> to July 18<sup>th</sup>, 2022). Antibody titer is expressed as log<sub>10</sub> geometric mean titer. Areas with less than 10 specimens are shaded grey. Color gradient depicts range of antibody titers.

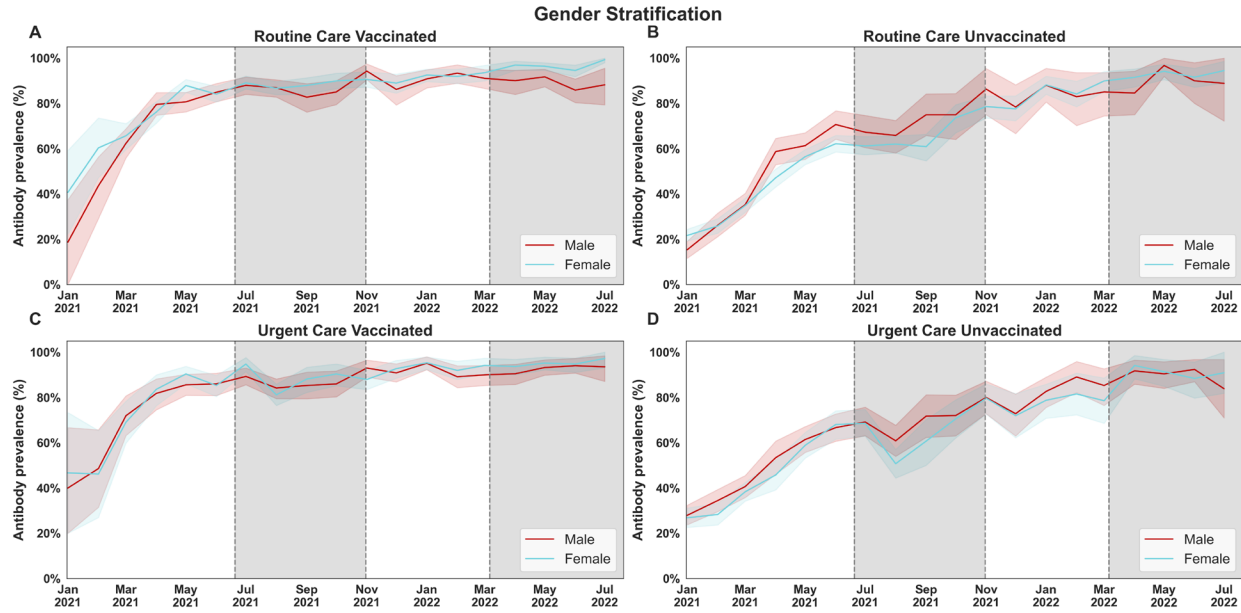
586  
587  
588  
589



590  
591  
592  
593  
594  
595  
596  
597  
598  
599  
600  
601  
602  
603  
604  
605  
606  
607  
608  
609  
610  
611  
612  
613  
614  
615  
616  
617  
618

**Supplementary Figure 1.** Distribution of SARS-CoV-2 spike antibody titers during the serosurvey period. SARS-CoV-2 spike antibody titers in the Routine Care (left column), and Urgent care (right column) groups measured between February 9<sup>th</sup> 2020 to July 18<sup>th</sup> 2022. Weekly counts are presented per single column. Color gradient depicts the range of antibody titers.

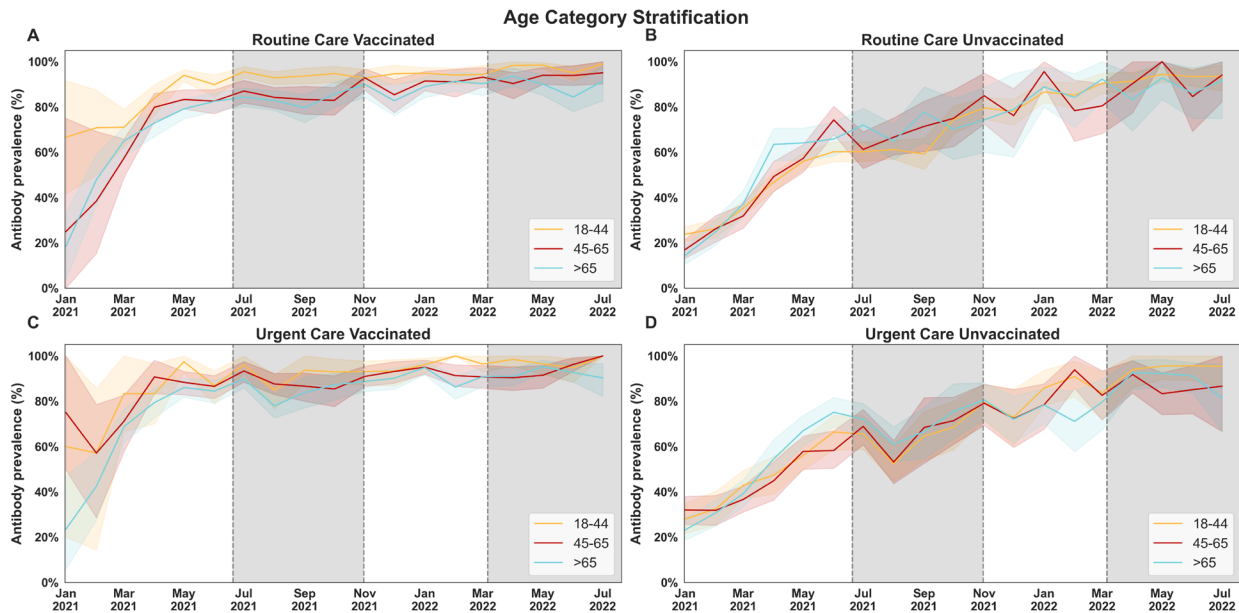
It is made available under a [CC-BY-NC-ND 4.0 International license](https://creativecommons.org/licenses/by-nc-nd/4.0/) .



619  
620  
621  
622  
623  
624  
625  
626  
627  
628  
629  
630  
631  
632  
633  
634  
635

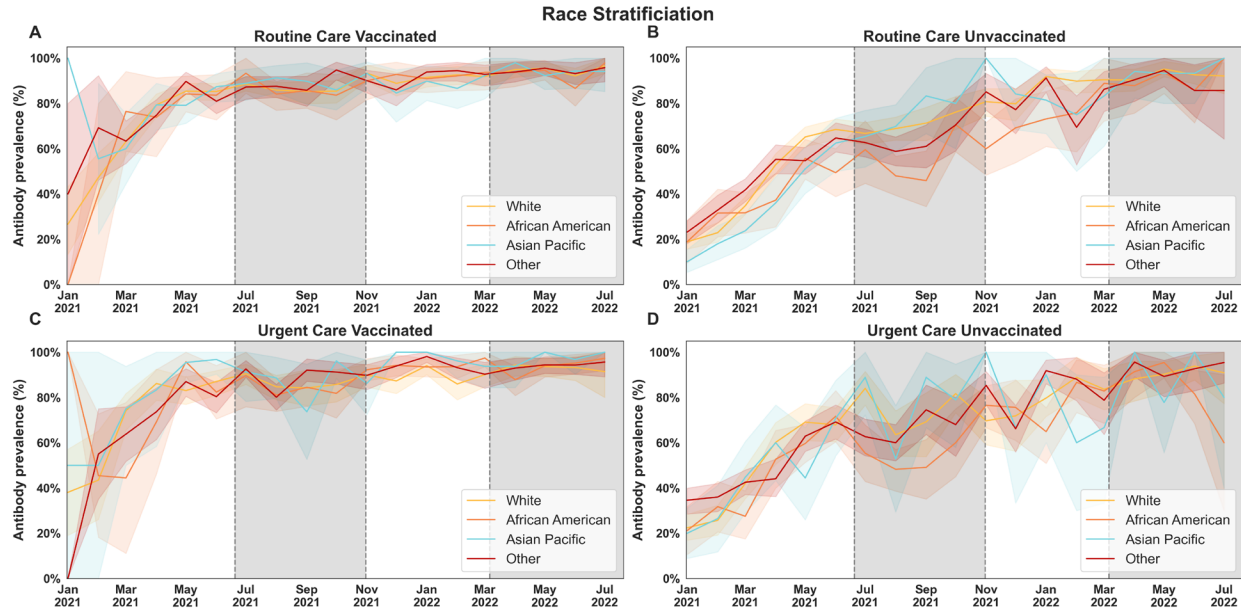
**Supplementary figure 2.** SARS-CoV-2 spike antibody prevalence stratified by sex and vaccination status. Antibody prevalence in the Routine Care (top), and Urgent Care (bottom) groups, measured between February 9<sup>th</sup> 2020 to July 18<sup>th</sup> 2022, in vaccinated (left) and unvaccinated (right) individuals. Charts are fitted with a bootstrapped confidence interval based on random resampling of results to compute an estimate of the 95% confidence interval of the mean. Vaccination status was assessed at time of sample collection and does not reflect vaccination rates in NYC or within our patient population.

636



637  
638  
639  
640  
641  
642  
643  
644  
645  
646  
647  
648  
649  
650  
651

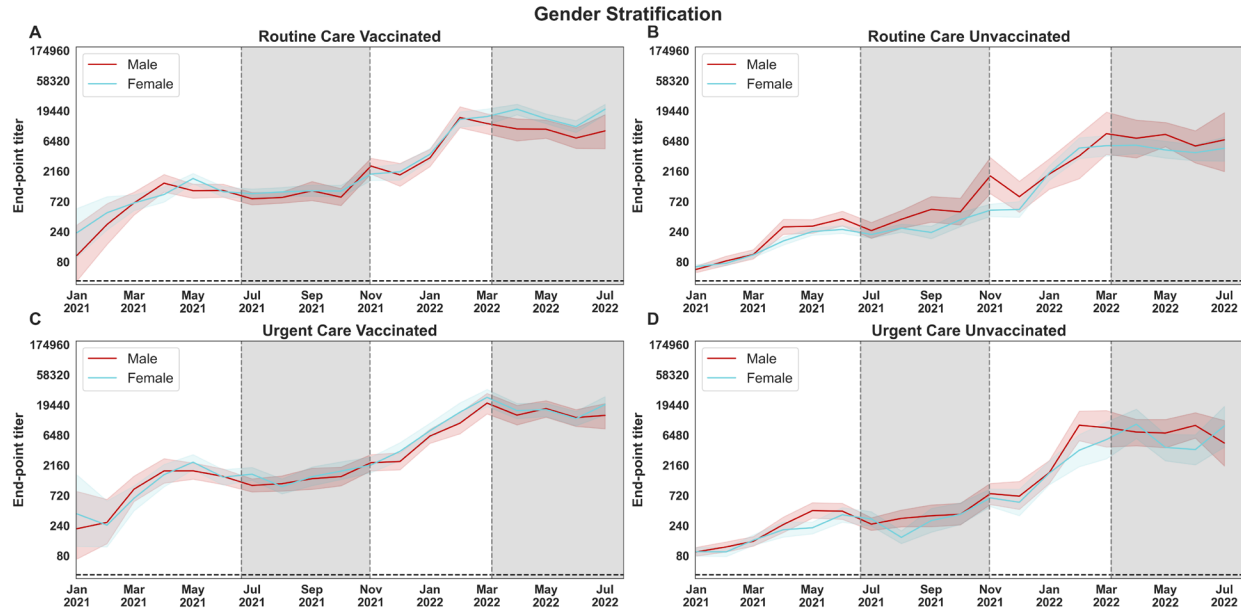
**Supplementary figure 3.** SARS-CoV-2 spike antibody prevalence stratified by age and vaccination status. Antibody prevalence in the Routine Care (top), and Urgent Care (bottom) groups, measured between February 9<sup>th</sup> 2020 to July 18<sup>th</sup> 2022 in individuals with different categorical age levels (18-44, 45-65, and >65 year old) in vaccinated (left) and unvaccinated (right) individuals. Charts are fitted with a bootstrapped confidence interval based on random resampling of results to compute an estimate of the 95% confidence interval of the mean. Vaccination status was assessed at time of sample collection and does not reflect vaccination rates in NYC or within our patient population.



652  
653  
654  
655  
656  
657  
658  
659  
660  
661  
662  
663  
664  
665  
666  
667

**Supplementary figure 4.** SARS-CoV-2 spike antibody prevalence stratified by race and vaccination status. Antibody prevalence in the Routine Care (top), and Urgent Care (bottom) groups, measured between February 9<sup>th</sup> 2020 to July 18<sup>th</sup> 2022 in individuals of different racial categories (White, African American, Asian and Pacific islander, Other, unknown) in vaccinated (left) and unvaccinated (right) individuals. Charts are fitted with a bootstrapped confidence interval based on random resampling of results to compute an estimate of the 95% confidence interval of the mean. Vaccination status was assessed at time of sample collection and does not reflect vaccination rates in NYC or within our patient population.



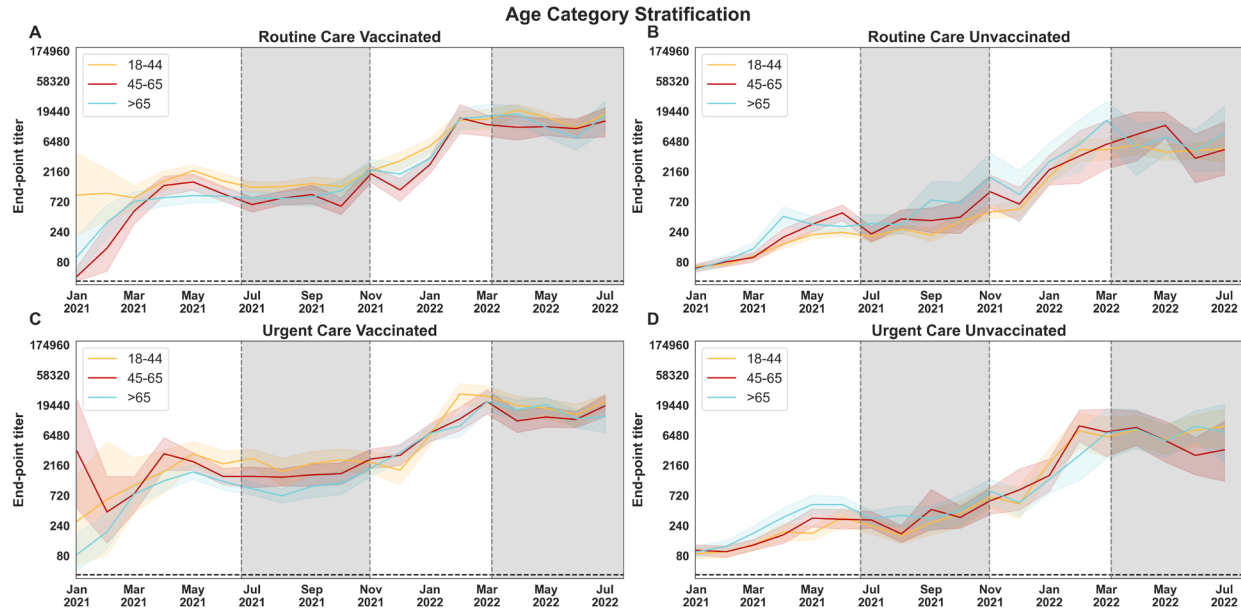


668  
669  
670  
671  
672  
673  
674  
675  
676  
677  
678  
679  
680  
681  
682  
683  
684  
685

**Supplementary figure 5.** SARS-CoV-2 anti-spike antibody titers stratified by sex and vaccination status. Antibody prevalence in the Routine Care (top), and Urgent Care (bottom) groups, measured between February 9<sup>th</sup> 2020 to July 18<sup>th</sup> 2022, in vaccinated (left) and unvaccinated (right) individuals. Charts are fitted with a bootstrapped confidence interval based on random resampling of results to compute an estimate of the 95% confidence interval of the mean. Vaccination status was assessed at time of sample collection and does not reflect vaccination rates in NYC or within our patient population.



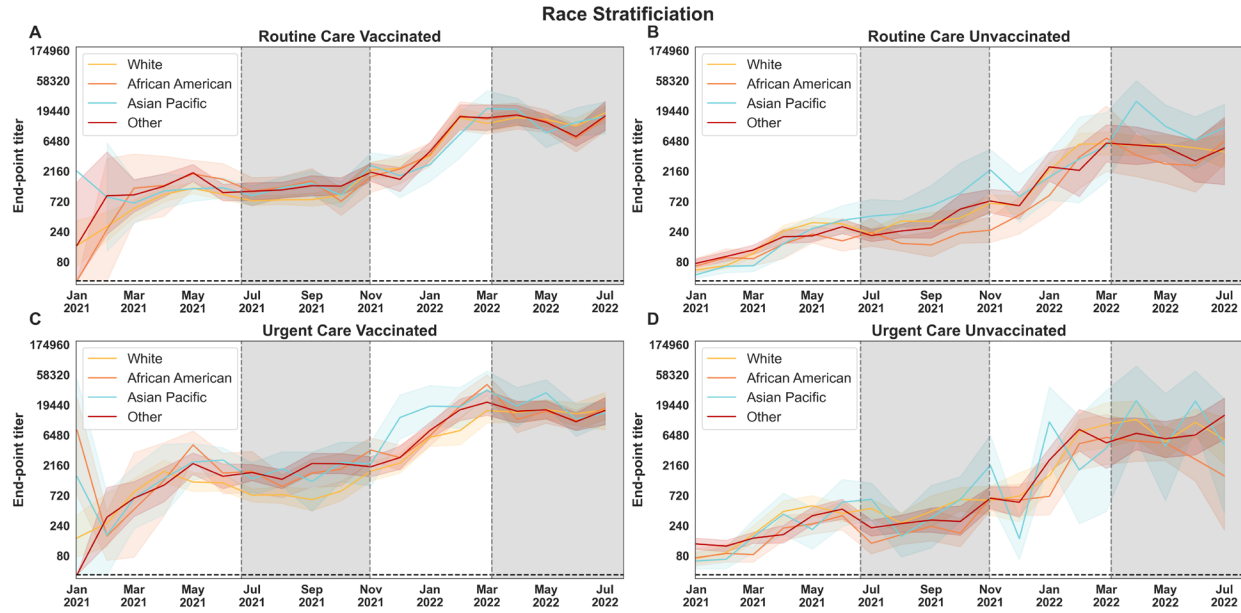
It is made available under a [CC-BY-NC-ND 4.0 International license](https://creativecommons.org/licenses/by-nc-nd/4.0/) .



686  
687  
688  
689  
690  
691  
692  
693  
694  
695  
696  
697  
698  
699  
700  
701

**Supplementary figure 6.** SARS-CoV-2 anti-spike antibody titers stratified by age and vaccination status. Antibody prevalence in the Routine Care (top), and Urgent Care (bottom) groups, measured between February 9<sup>th</sup> 2020 to July 18<sup>th</sup> 2022 in individuals with different categorical age levels (18-44, 45-65, and >65 year old) in vaccinated (left) and unvaccinated (right) individuals. Charts are fitted with a bootstrapped confidence interval based on random resampling of results to compute an estimate of the 95% confidence interval of the mean. Vaccination status was assessed at time of sample collection and does not reflect vaccination rates in NYC or within our patient population.

It is made available under a [CC-BY-NC-ND 4.0 International license](https://creativecommons.org/licenses/by-nc-nd/4.0/) .



702  
703  
704  
705  
706  
707  
708  
709  
710  
711  
712  
713  
714  
715

**Supplementary figure 7.** SARS-CoV-2 anti-spike antibody titers stratified by race and vaccination status. Antibody prevalence in the Routine Care (top), and Urgent Care (bottom) groups, measured between February 9<sup>th</sup> 2020 to July 18<sup>th</sup> 2022 in individuals of different racial categories (White, African American, Asian and Pacific islander, Other, unknown) in vaccinated (left) and unvaccinated (right) individuals. Charts are fitted with a bootstrapped confidence interval based on random resampling of results to compute an estimate of the 95% confidence interval of the mean. Vaccination status was assessed at time of sample collection and does not reflect vaccination rates in NYC or within our patient population.