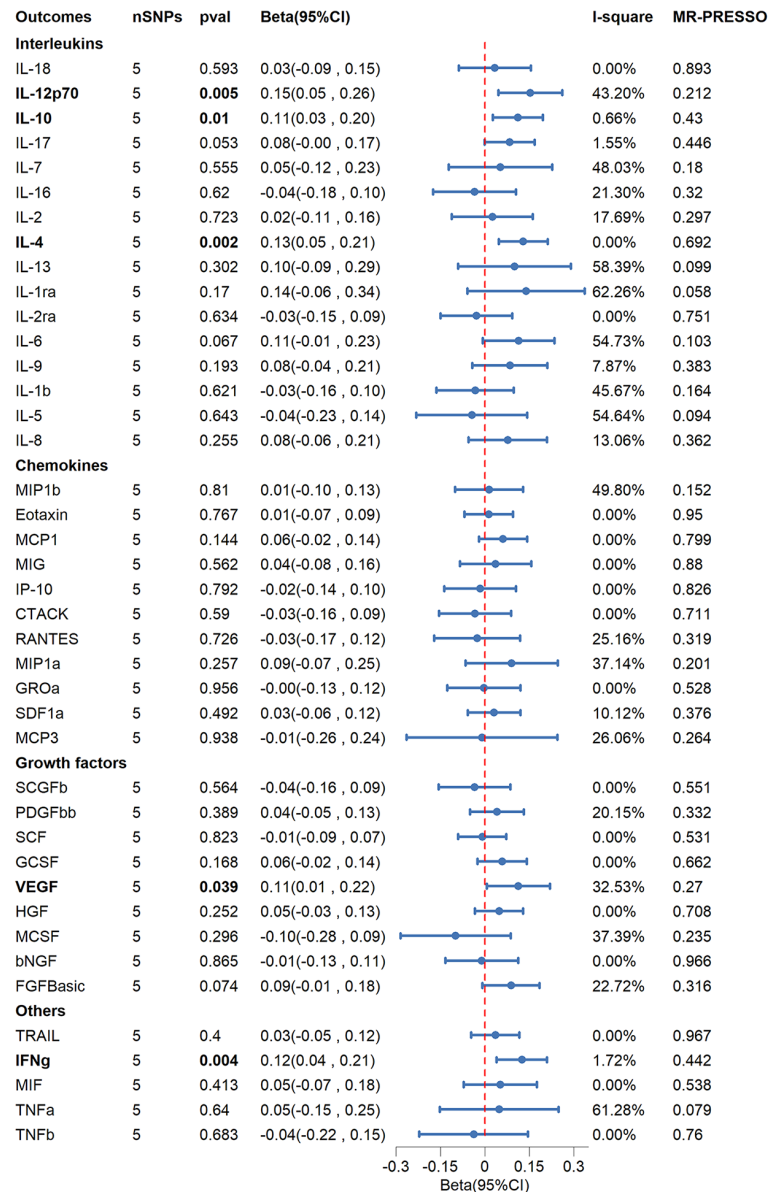
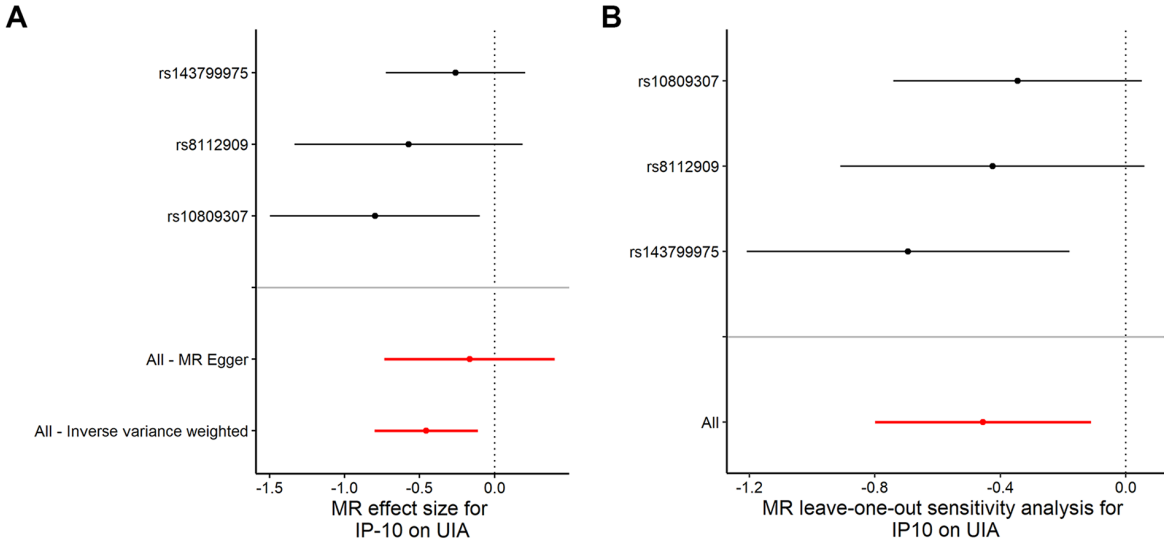


Supplementary Figures

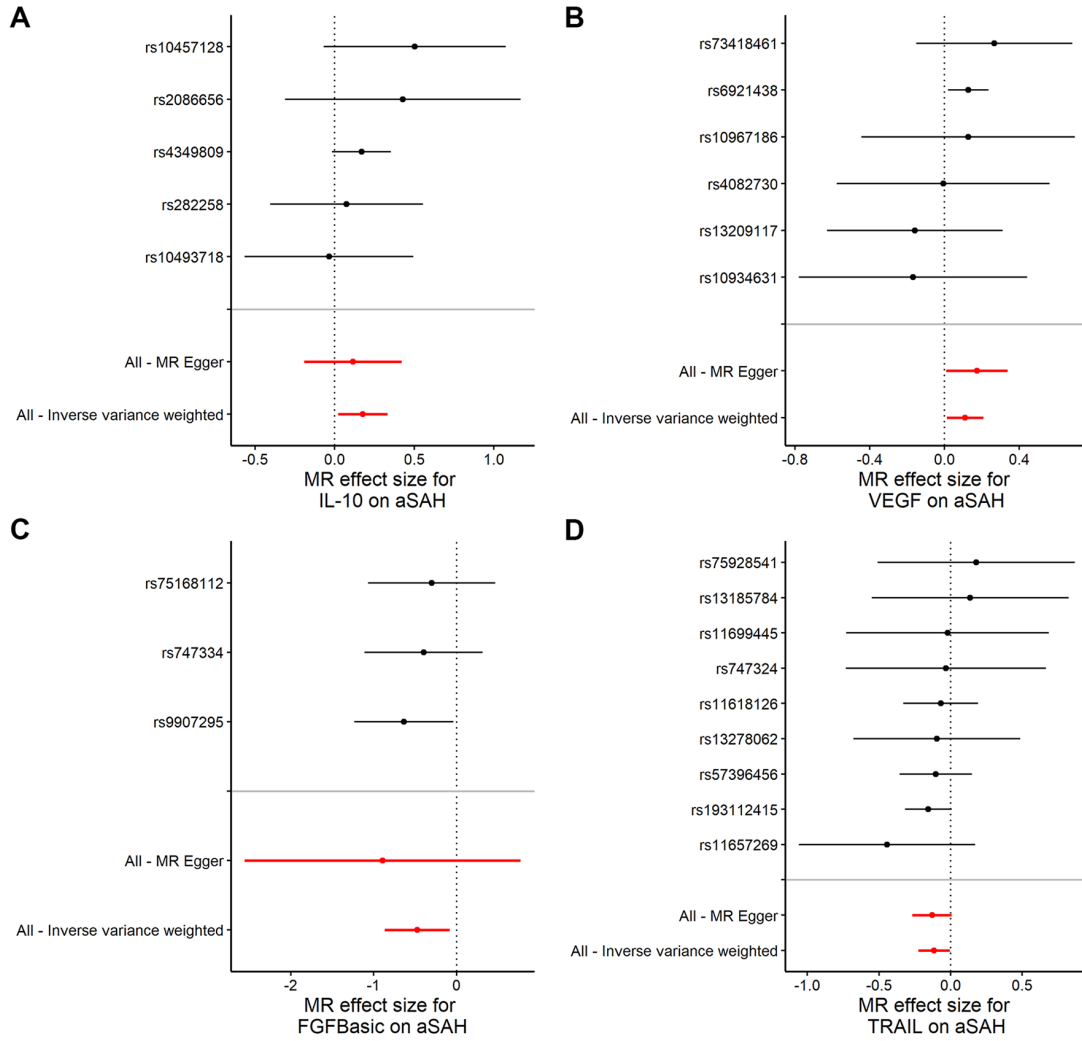
Supplementary Figure S1. Causalities of aSAH on cytokines. Beta and 95% CI indicate the alteration in the standard deviation of cytokines per log odds rise in aSAH. Significance was determined using a p-value threshold of $0.05 / 41 = 0.0012$ following Bonferroni correction. The inverse variance weighted method was applied consistently across all groups except for IL-13, IL-1ra, and TNFa, which applied the IVW (multiplicative random effects) method.



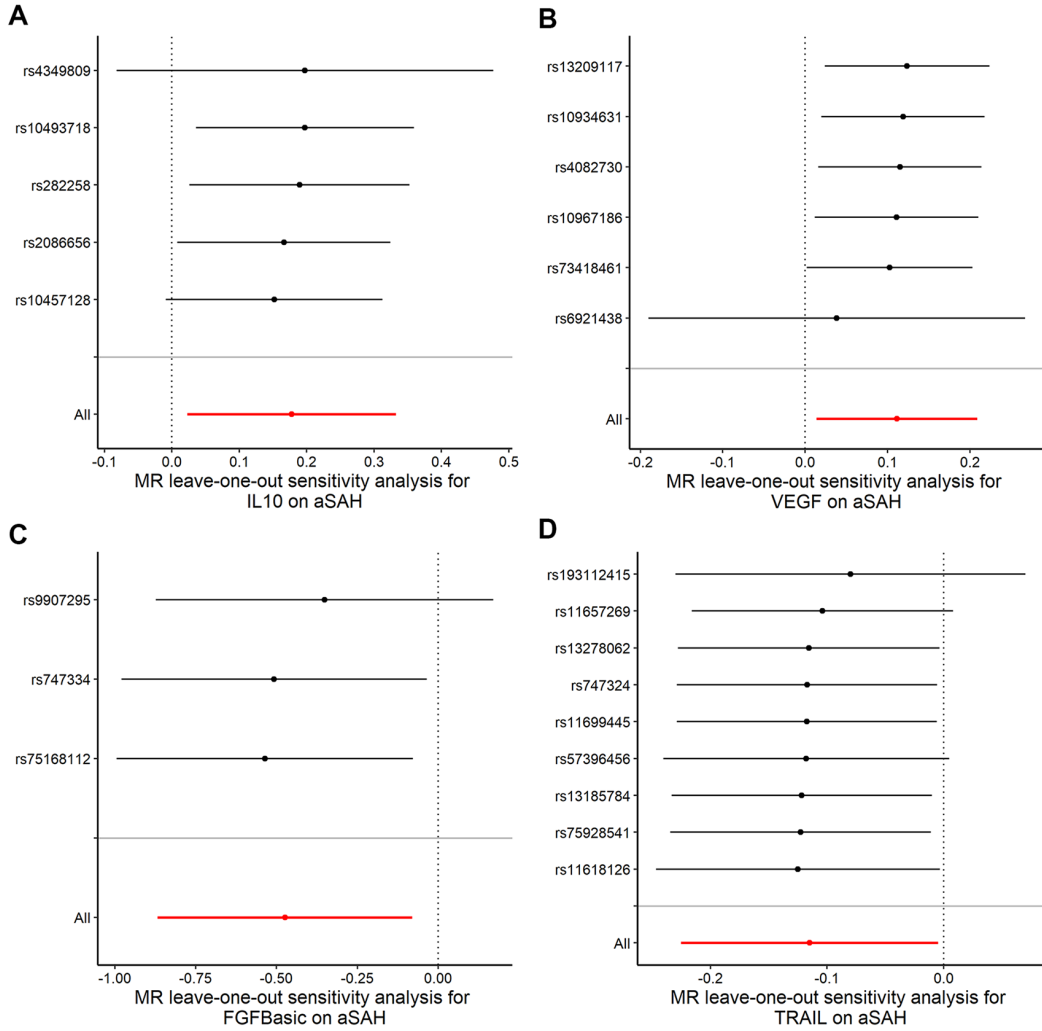
Supplementary Figure S2. Forest plot and leave-one-out sensitivity analyses of MR analysis between inflammatory cytokines and UIA.



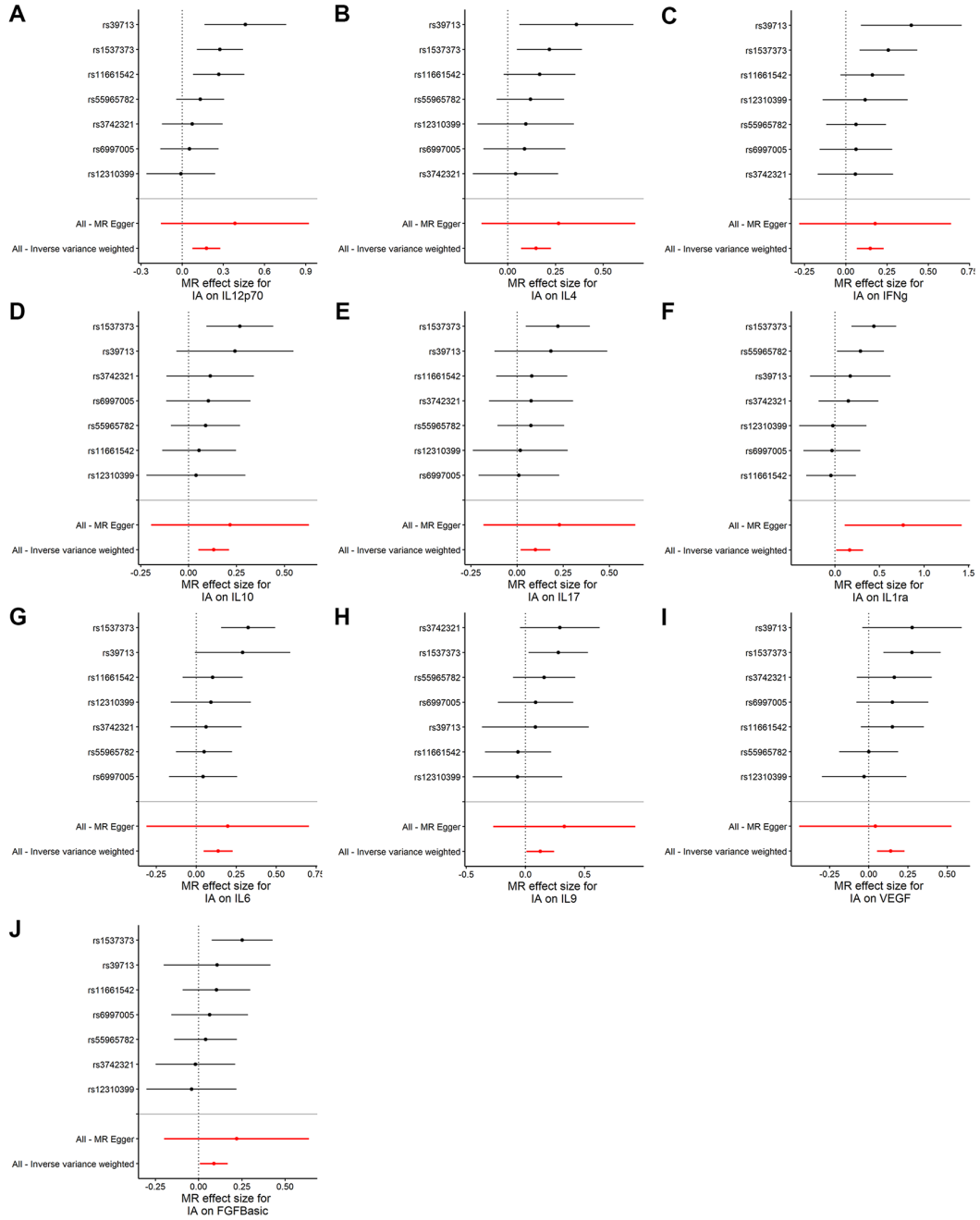
Supplementary Figure S3. Forest plots of MR analysis between inflammatory cytokines and aSAH. (A-D): IL-10, VEGF, FGFBasic, and TRAIL.



Supplementary Figure S4. Leave-one-out sensitivity analyses of MR analysis between inflammatory cytokines and aSAH. (A-D): IL-10, VEGF, FGFBasic, and TRAIL.



Supplementary Figure S5. Forest plots of MR analysis between IA and inflammatory cytokines. (A-J): IL-12p70, IL-4, IFN γ , IL-10, IL-17, IL-1ra, IL-6, IL-9, VEGF, and FGFBasic.



Supplementary Figure S6. Leave-one-out sensitivity analyses of MR analyses between IA and inflammatory cytokines. (A-J): IL-12p70, IL-4, IFN γ , IL-10, IL-17, IL-1ra, IL-6, IL-9, VEGF, and FGFBasic.

