

Contents

Figure S1: Study population selection criteria for model development.....	3
Figure S2: Model validation cohort: Study population selection criteria	4
Figure S3: Occurrence of cytopenia, myelotoxicity and renal function decline in sulfasalazine prescribed cohort.....	5
Figure S4: Occurrence of cytopenia, myelotoxicity and renal function decline in sulfasalazine prescribed cohort excluding patients prescribed either methotrexate, leflunomide, or thiopurines at cohort entry	6
Figure S5: Distribution of predicted risk in the model derivation cohort at 5 years.....	7
Figure S6: Calibration of a prognostic model for SSZ discontinuation with abnormal monitoring blood-test results at 5-years in the development cohort ¹	8
.....	8
Figure S7: Calibration of a prognostic model for SSZ discontinuation with abnormal monitoring blood-test results at 5-years in the validation cohort ¹	9
Figure S8: Distribution of predicted risk in the model validation cohort at 5 years	10
Figure S9: Calibration of a prognostic model for SSZ discontinuation with abnormal monitoring blood-test results at 1 year in the validation cohort ¹	11
Figure S10: Calibration of a prognostic model for SSZ discontinuation with abnormal monitoring blood-test results at 2 years in the validation cohort ¹	12
Figure S11: Calibration of a prognostic model for SSZ discontinuation with abnormal monitoring blood-test results at 3 years in the validation cohort ¹	13
Figure S12: Calibration of a prognostic model for SSZ discontinuation with abnormal monitoring blood-test results at 4 years in the validation cohort ¹	14
Figure S13: Calibration of a prognostic model for SSZ discontinuation with abnormal monitoring blood-test results at 5 years in the validation cohort: stratified according to age. 15	
Figure S14: Calibration of a prognostic model for SSZ discontinuation with abnormal monitoring blood-test results at 5 years in the validation cohort: stratified according to disease type.....	16

Supplementary Table 1: Individual patient's characteristics at the midpoint of each decile of risk.

Decile	Age± (yr.)	Sex	BMI (kg/m ²)	Alcohol	Disease	DM	CKD	Immune-suppress. drug	Statin	Anti-epileptic	Paracetamol	BTA	Cumulative probability of outcome (%)
1	25-30	F	35.2	Moderate	PSA	No	No	MTX	No	No	No	No	5.25
2	35-40	M	23.0	Non-drinker	RA	No	No	No	No	No	No	No	6.19
3	25-30	F	21.6	Low	PSA	No	No	No	No	No	No	No	6.72
4	55-60	F	29.8	Low	RA	No	No	No	No	No	No	No	7.25
5	55-60	M	24.0	Non-drinker	RA	No	No	No	No	No	Yes	No	7.80
6	70-75	F	27.9	Low	RA	No	No	Aza/6-MP	No	Yes	Yes	No	8.45
7	45-50	F	25.3	Low	RA	No	No	MTX	No	No	No	No	9.29
8	75-80	M	27.7	Non-drinker	RA	Yes	No	No	Yes	No	Yes	No	10.52
9	65-70	M	30.6	Low	PSA	No	Yes	No	No	No	Yes	No	13.90
10	55-60	F	33.8	Non-drinker	RA	No	No	MTX	No	No	No	Yes	19.04

Aza/6-MP: - Azathioprine/6-Mercaptopurine; BMI: - Body Mass Index; BTA: - Blood Test abnormalities within 6 months of first primary care sulfasalazine prescription; CKD: - Chronic Kidney Disease; Anti-epileptics: - carbamazepine / valproate; DM: - diabetes mellitus; F: - female; M: - male; MTX: - methotrexate; PsA: - psoriatic arthritis; RA: - Rheumatoid Arthritis. ± 5-year age band. Exact age not shown for anonymity.

Figure S1: Study population selection criteria for model development

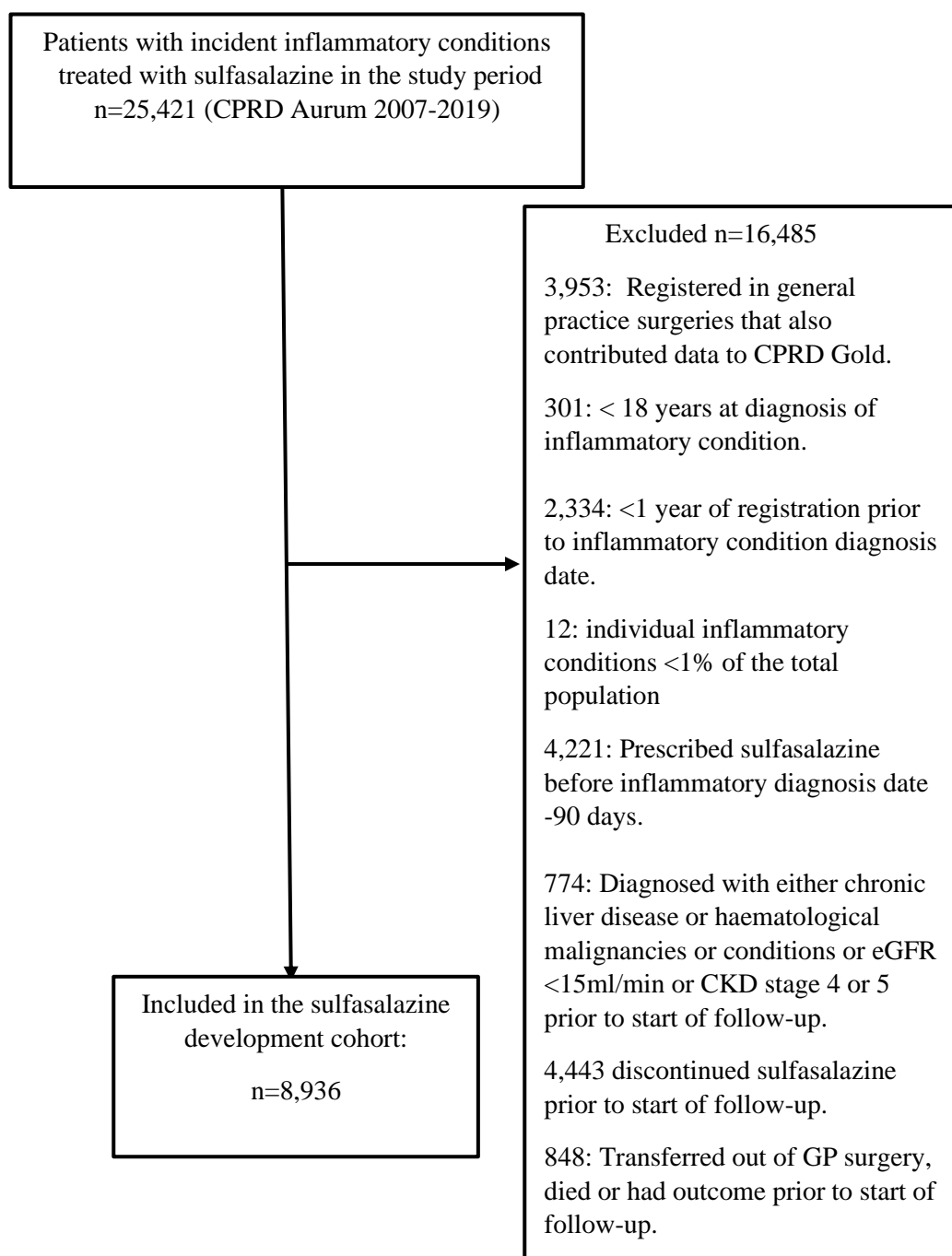


Figure S2: Model validation cohort: Study population selection criteria

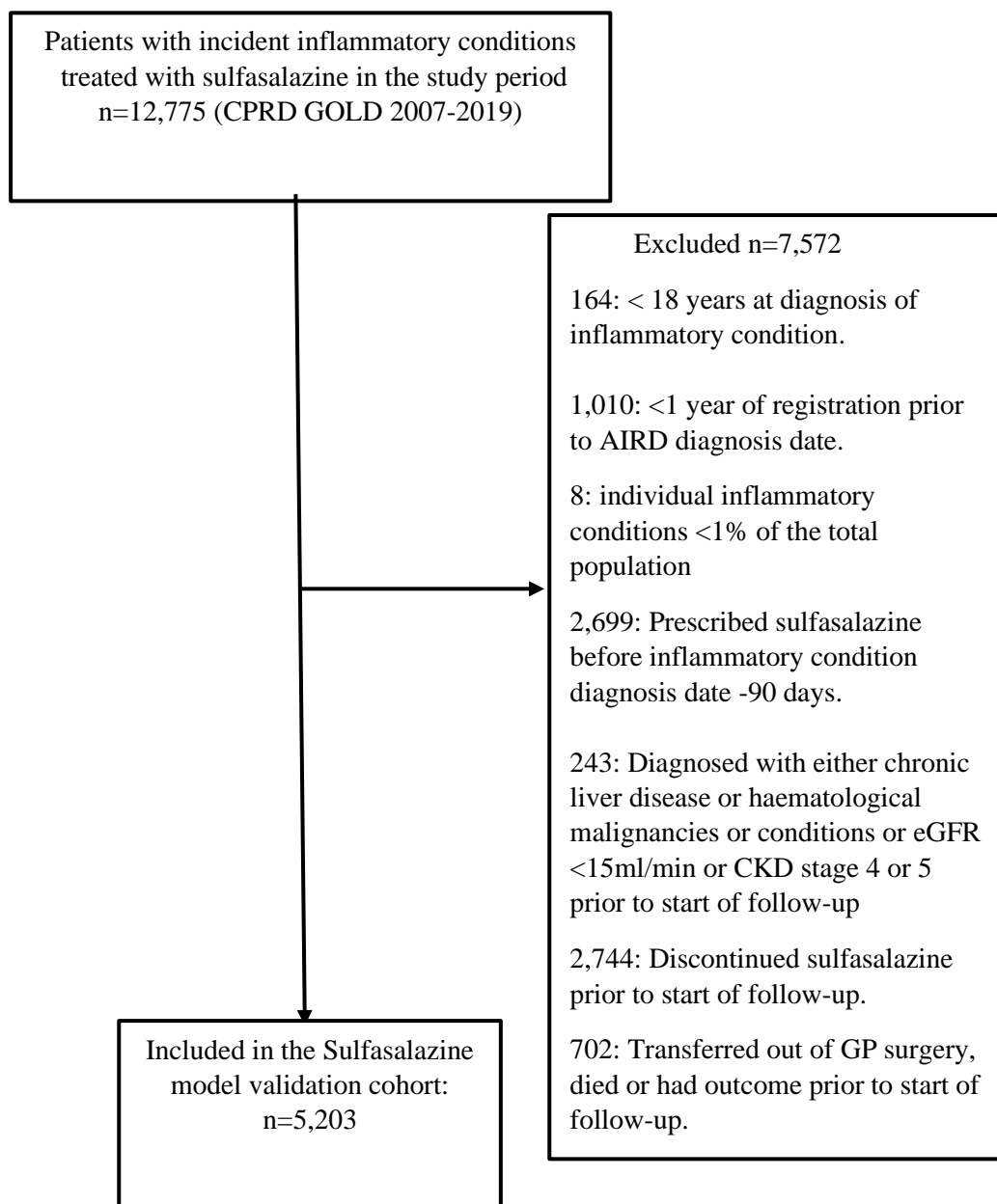


Figure S3: Occurrence of cytopenia, myelotoxicity and renal function decline in the cohort exposed to sulfasalazine

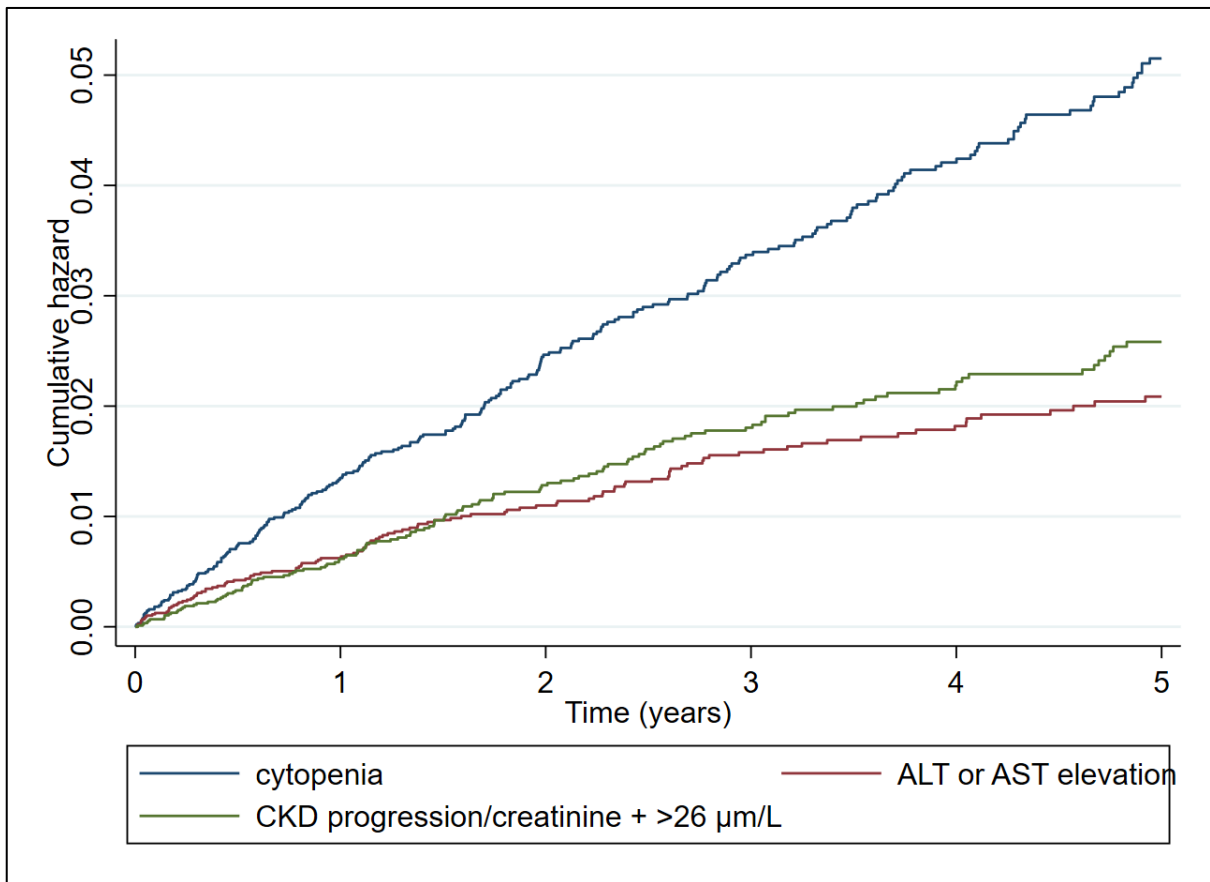


Figure S4: Occurrence of cytopenia, myelotoxicity and renal function decline in sulfasalazine prescribed cohort excluding patients prescribed either methotrexate, leflunomide, or thiopurines at cohort entry

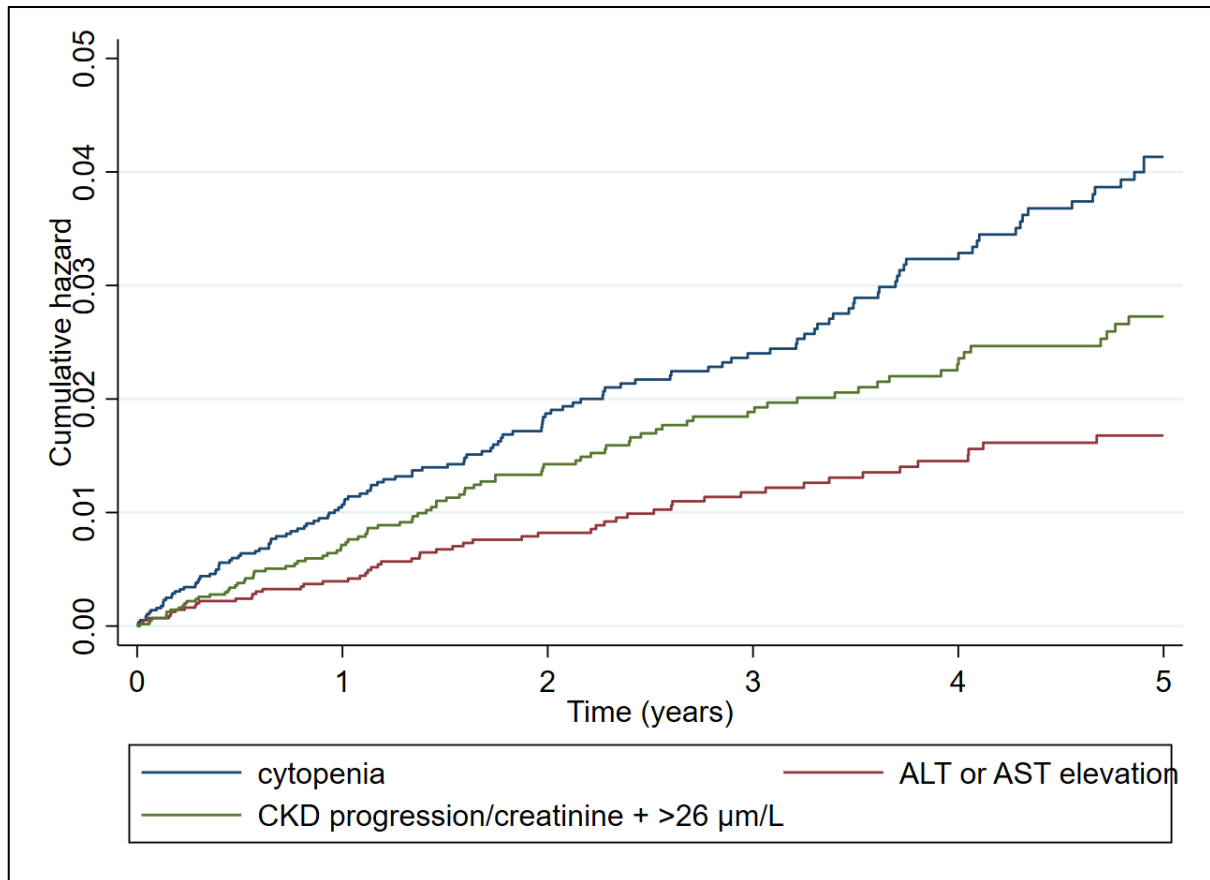


Figure S5: Distribution of predicted risk in the model derivation cohort at 5 years

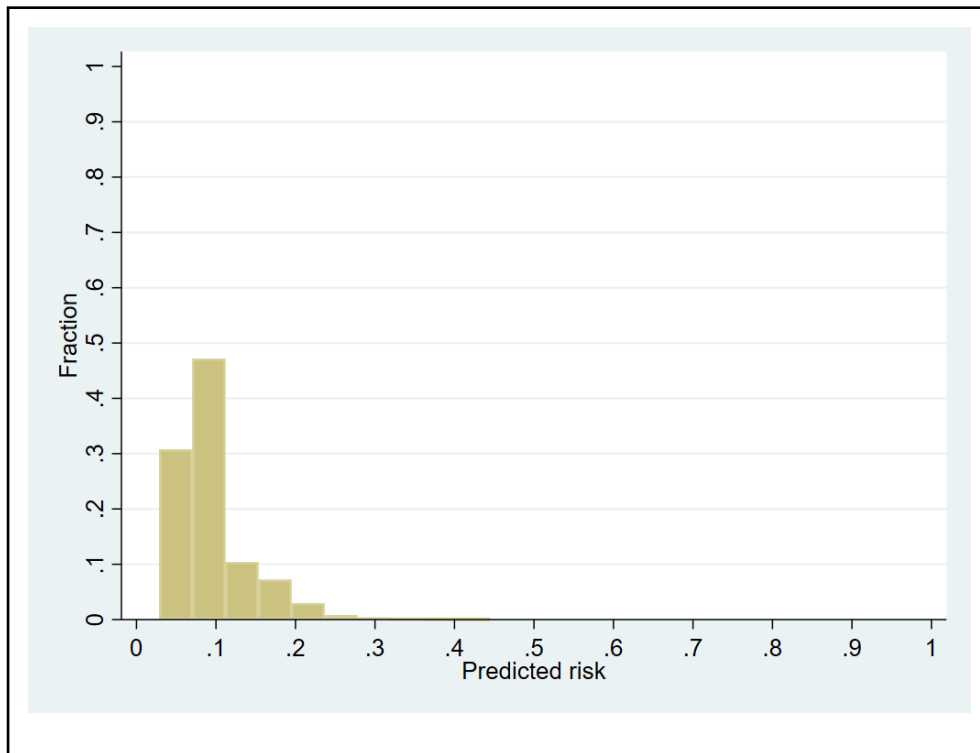
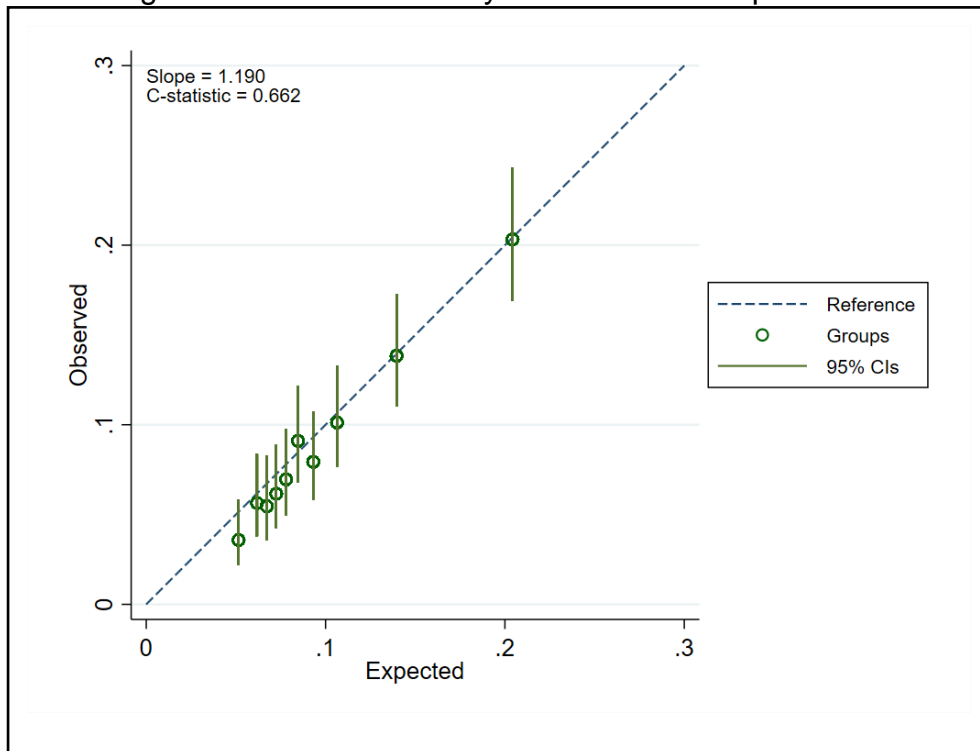
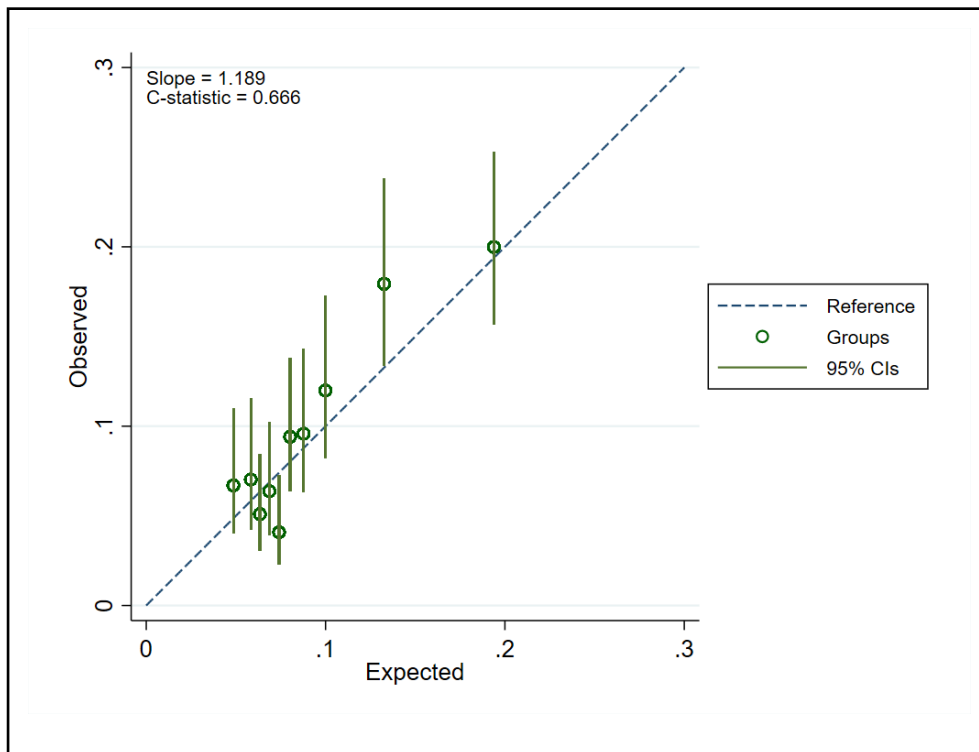


Figure S6: Calibration of a prognostic model for SSZ discontinuation with abnormal monitoring blood-test results at 5-years in the development cohort¹



¹Data from a single imputed dataset; So(t=5) 0.940

Figure S7: Calibration of a prognostic model for SSZ discontinuation with abnormal monitoring blood-test results at 5-years in the validation cohort¹



¹Data from a single imputed dataset; So(t=5) 0.940

Figure S8: Distribution of predicted risk in the model validation cohort at 5 years

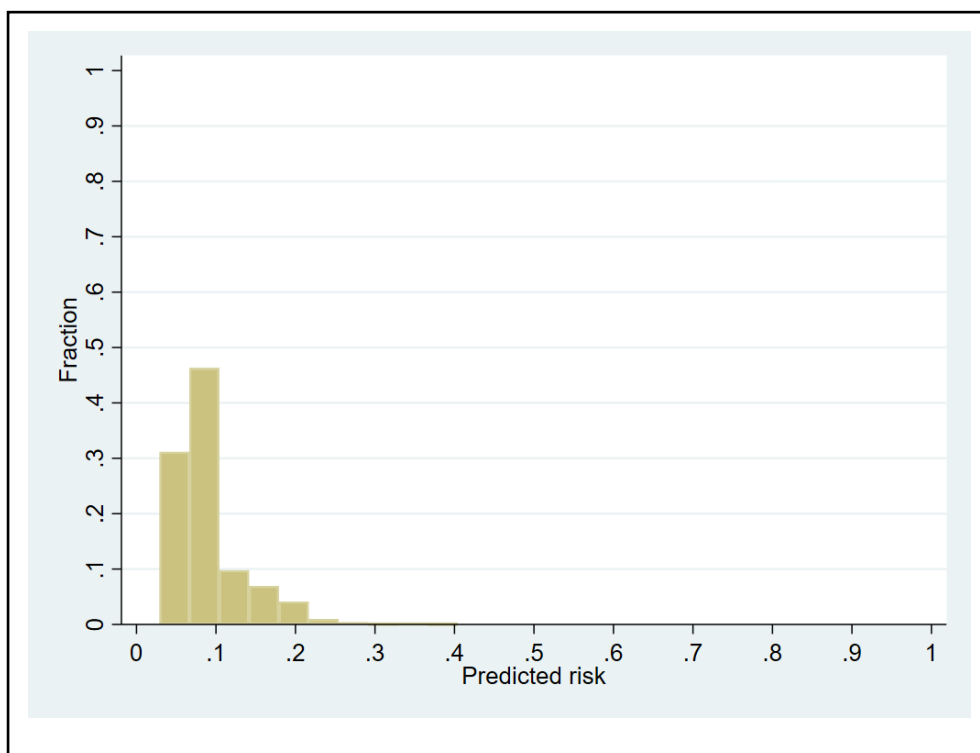
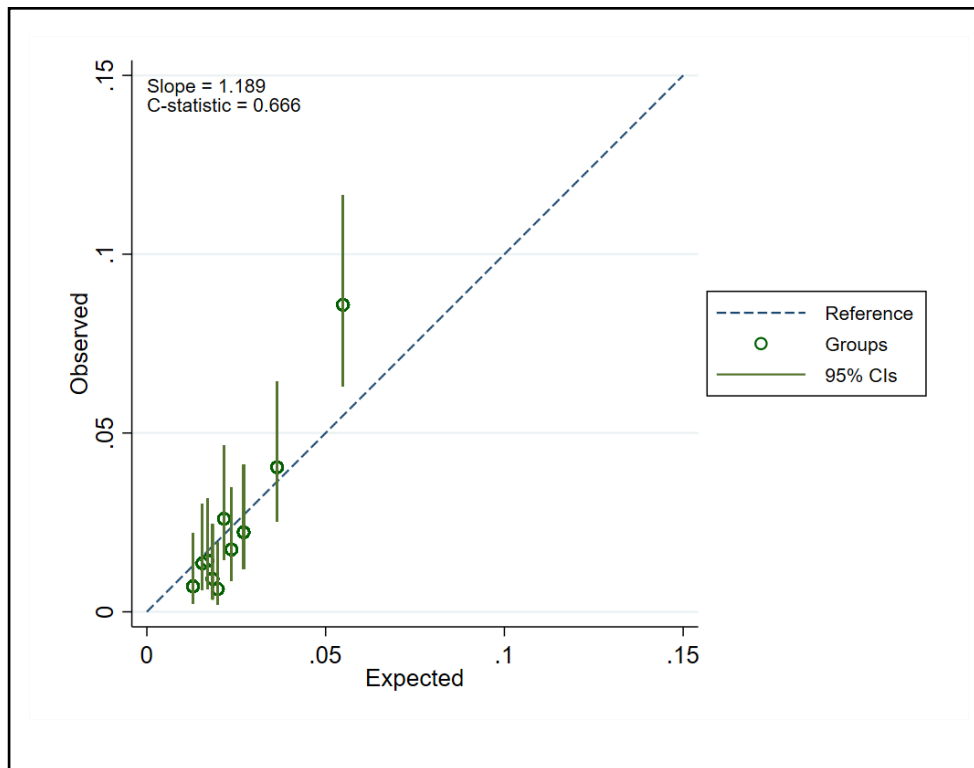
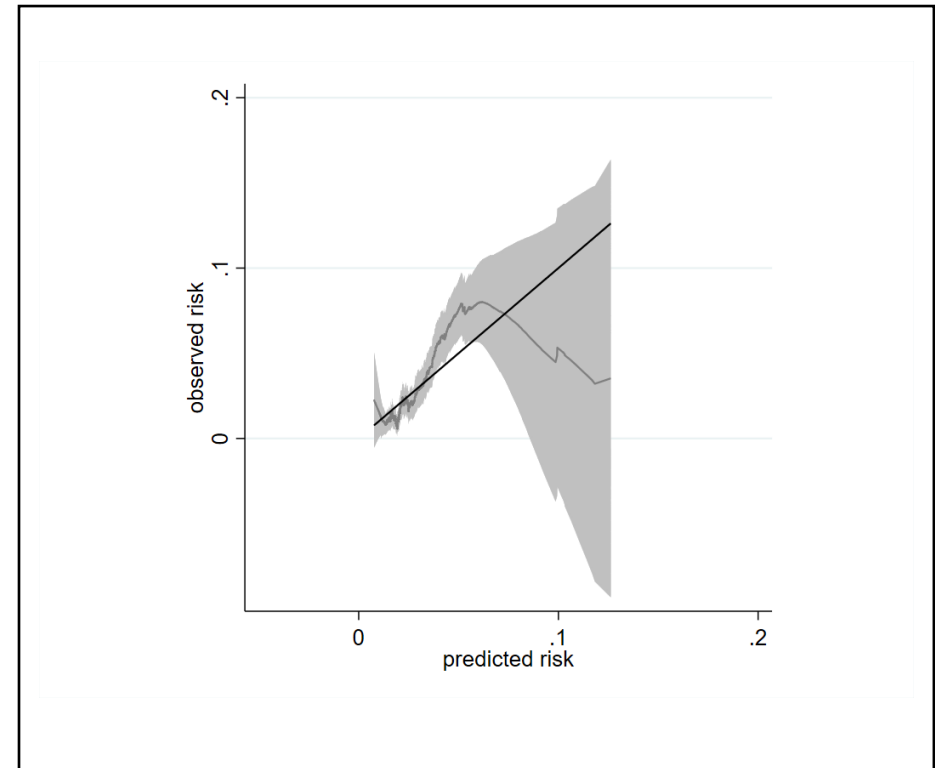


Figure S9: Calibration of a prognostic model for SSZ discontinuation with abnormal monitoring blood-test results at 1 year in the validation cohort¹

A: Calibration plot



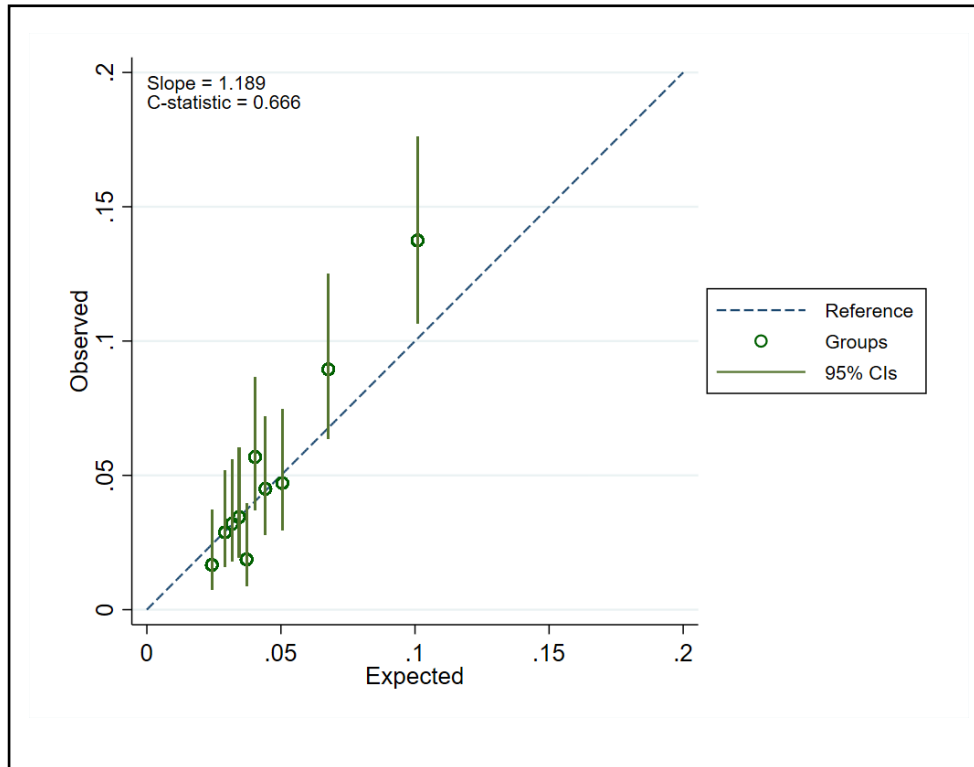
B: Smoothed calibration curve



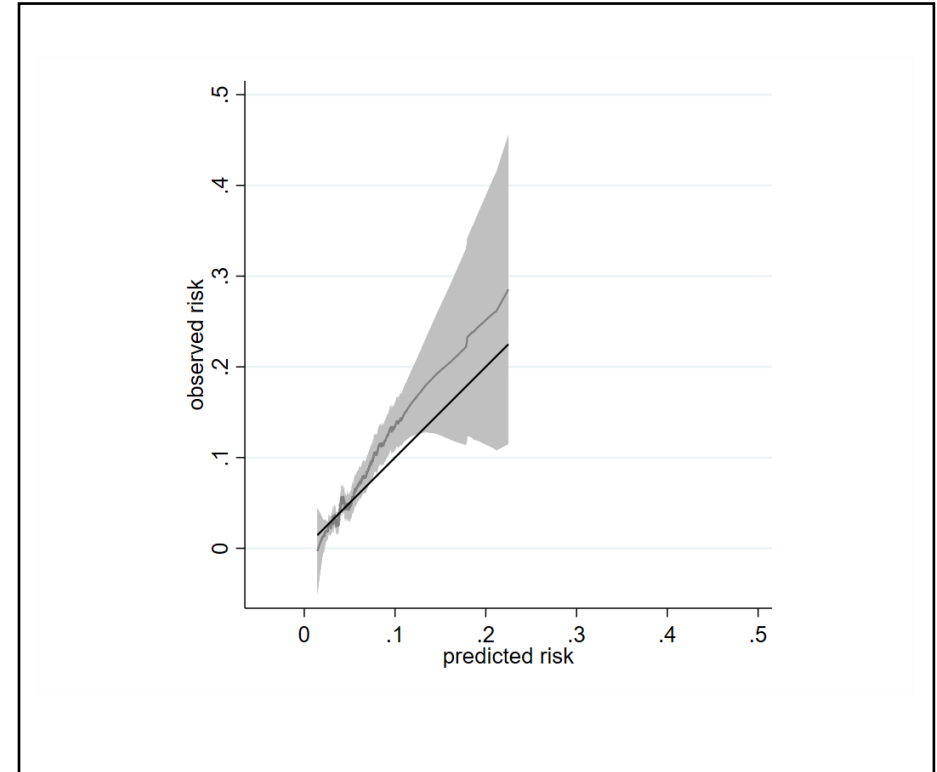
¹Data from a single imputed dataset was used; $S_o(t=1)$ 0.984

Figure S10: Calibration of a prognostic model for SSZ discontinuation with abnormal monitoring blood-test results at 2 years in the validation cohort¹

A. Calibration plot



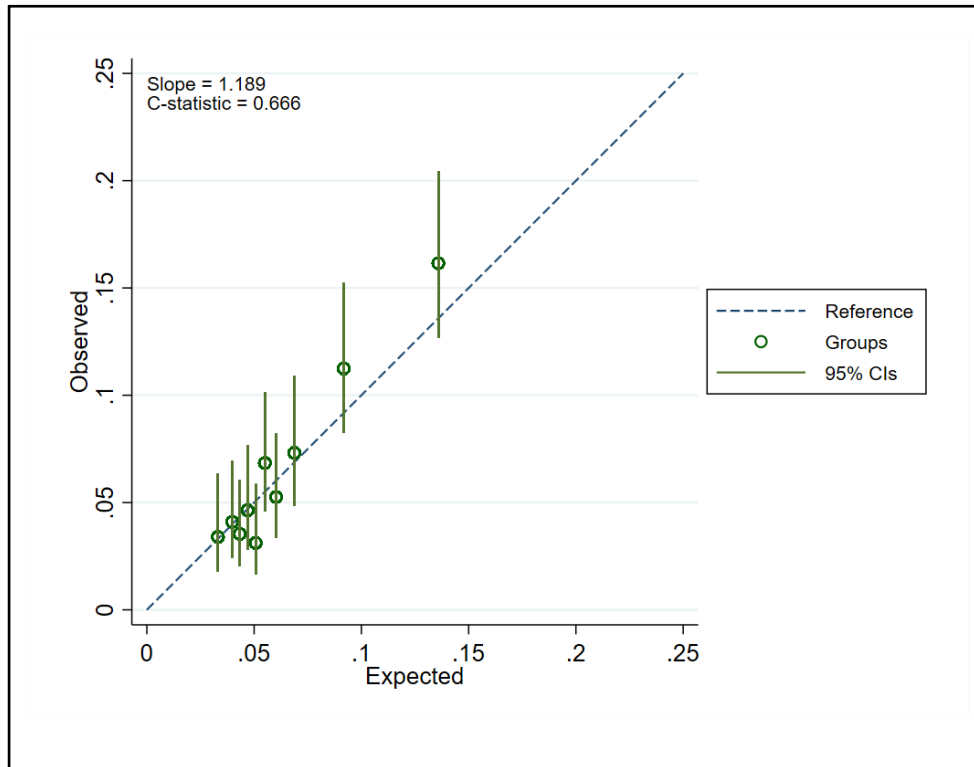
B. Smoothed calibration curve



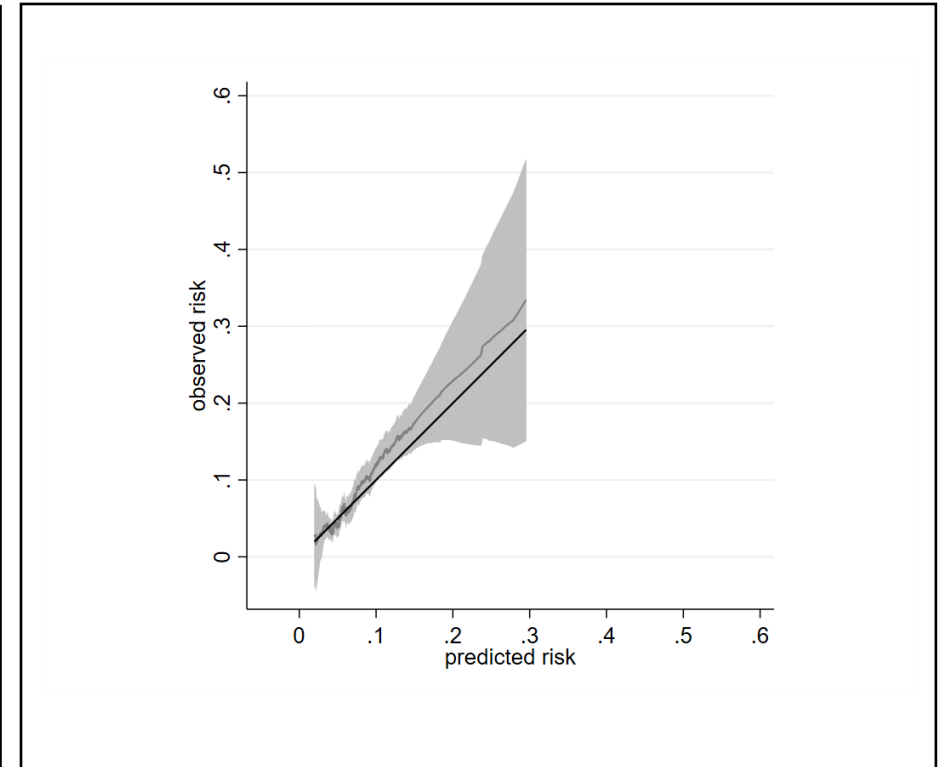
¹Data from a single imputed dataset was used; $S_o(t=2)$ 0.970

Figure S11: Calibration of a prognostic model for SSZ discontinuation with abnormal monitoring blood-test results at 3 years in the validation cohort¹

A. Calibration plot



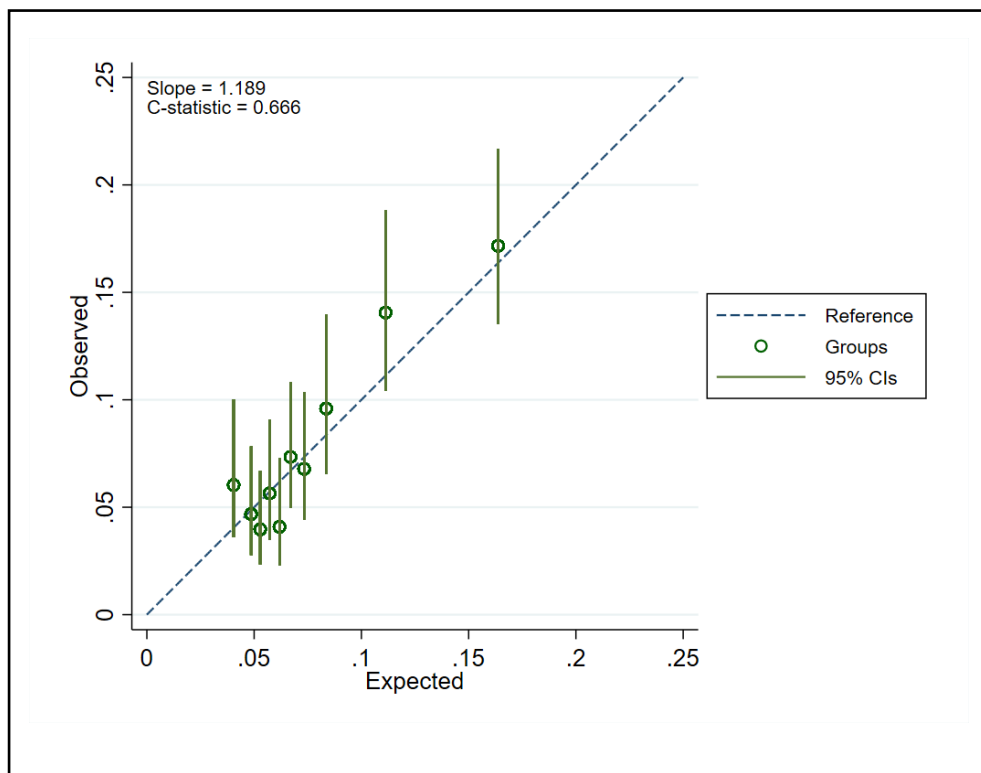
B. Smoothed calibration curve



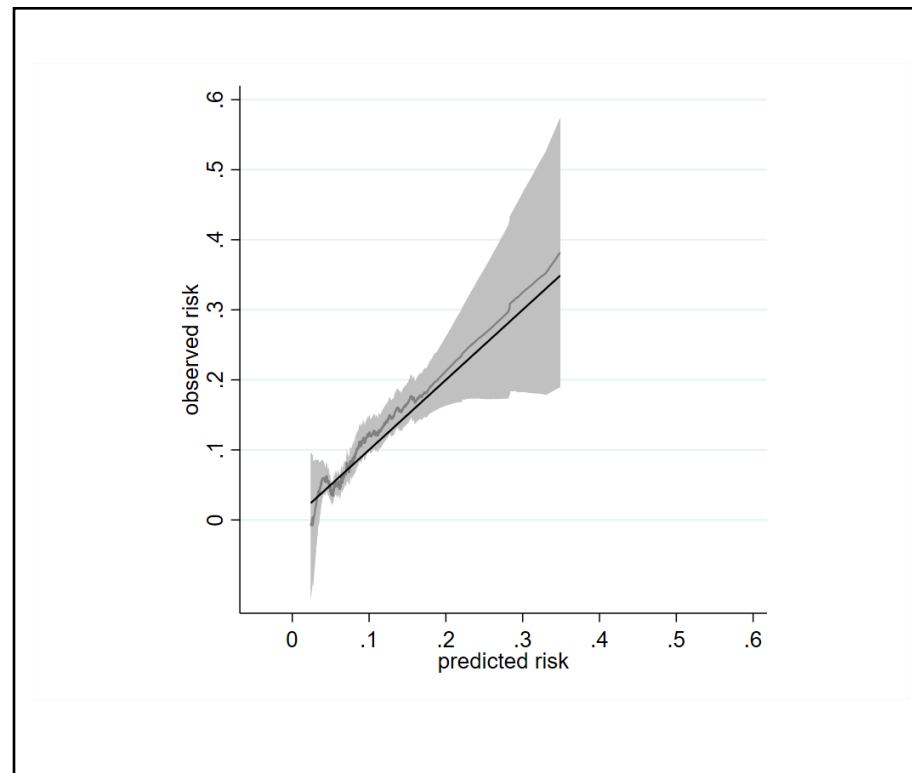
Data from a single imputed dataset was used; $S_0(t=3)$ 0.959

Figure S12: Calibration of a prognostic model for SSZ discontinuation with abnormal monitoring blood-test results at 4 years in the validation cohort¹

A. Calibration plot



B. Smoothed calibration curve



Data from a single imputed dataset was used; $S_o(t=4)$ 0.950

Figure S13: Calibration of a prognostic model for SSZ discontinuation with abnormal monitoring blood-test results at 5 years in the validation cohort: stratified according to age.

A. <60 years

B. ≥ 60 years

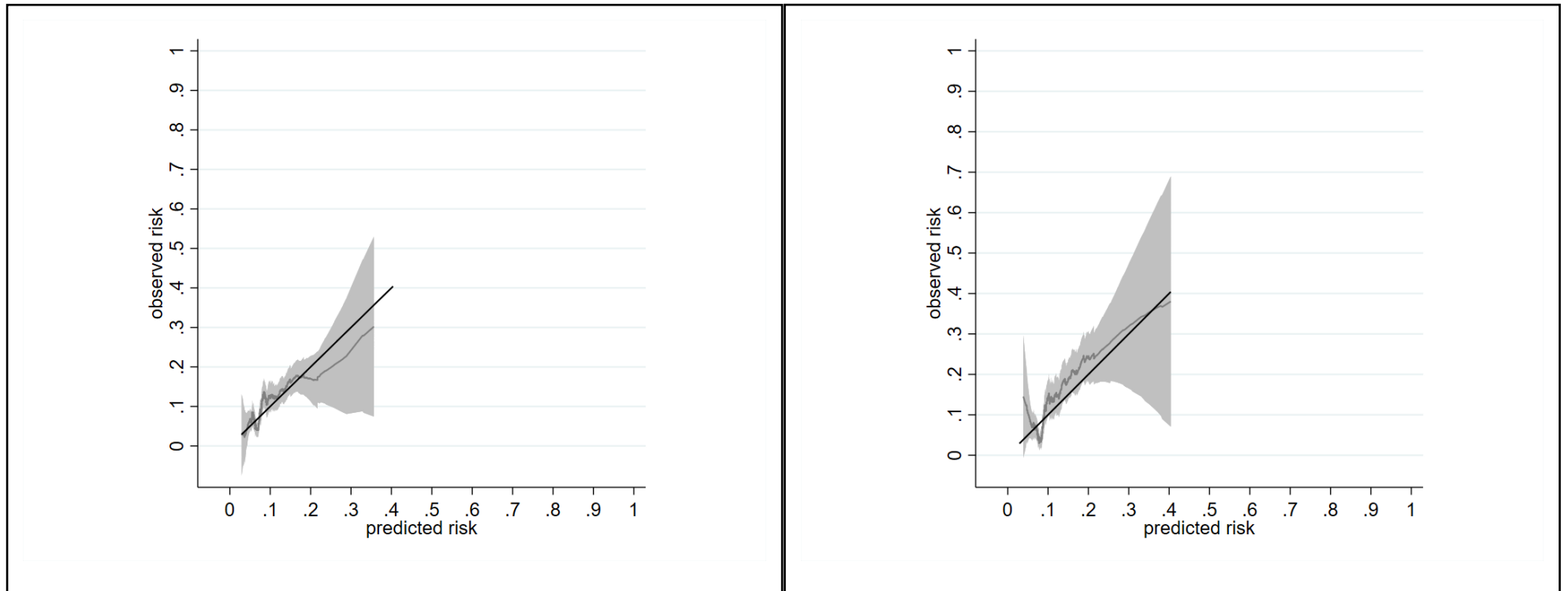


Figure S14: Calibration of a prognostic model for SSZ discontinuation with abnormal monitoring blood-test results at 5 years in the validation cohort: stratified according to disease type.

A: Rheumatoid Arthritis

B: other inflammatory conditions

