

Contents

Supplementary Table 1: Individual patient’s characteristics at the midpoint of each decile.	2
Supplementary Table 2: The estimated probability that a delayed abnormal blood test would have caused a more serious condition with 5-ASA.	3
Supplementary Table 3: The estimated costs and Quality Adjusted Life Years (QALY) losses associated with each condition derived from the literature ¹⁻¹¹ . Please see health economics methods.	4
Supplementary Table 4: Disaggregated results in the base case.....	5
Supplementary Table 5: Aggregated Results in the base case compared with current 3-month monitoring.....	5
Figure S1: Study population selection criteria for model development.....	6
Figure S2: Model validation cohort: Study population selection criteria	7
Figure S3: Nelson–Aalen cumulative hazard estimates for 5-ASA discontinuation associated with individual blood-test abnormalities*.....	8
Figure S4: Distribution of predicted risk in the model development cohort at 5 years	9
Figure S5: Calibration plot of a prognostic model for 5-ASA discontinuation with abnormal monitoring blood-test results at 5-years in the development cohort ¹	10
Figure S6: Calibration plot of a prognostic model for 5-ASA discontinuation with abnormal monitoring blood-test results at 5-years in the validation cohort ¹	11
Figure S7: Distribution of predicted risk in the model validation cohort at 5 years	12
Figure S8: Calibration of a prognostic model for 5-ASA discontinuation with abnormal monitoring blood-test results at 1 year in the validation cohort ¹	13
Figure S9: Calibration of a prognostic model for 5-ASA discontinuation with abnormal monitoring blood-test results at 2 years in the validation cohort ¹	14
Figure S10: Calibration of a prognostic model for 5-ASA discontinuation with abnormal monitoring blood-test results at 3 years in the validation cohort ¹	15
Figure S11: Calibration of a prognostic model for 5-ASA discontinuation with abnormal monitoring blood-test results at 4 years in the validation cohort ¹	16
Figure S12: Incremental net monetary benefit results when the risks of serious conditions estimated by clinicians were tripled.....	17

Supplementary Table 1: Individual patient's characteristics at the midpoint of each decile.

Decile	Age (yr.)	Sex	BMI (kg/m ²)	Alcohol	Disease	DM	CKD -3	IS drug	Statins	Carb/Val	Paracetamol	BTA	Cumulative probability of outcome %
1	30-35	M	24.6	Low	IBD	No	No	No	No	No	No	No	3.13
2	35-40	M	23.8	Low	IBD	No	No	No	No	No	No	No	3.18
3	30-35	F	28.0	Low	IBD	No	No	No	No	No	No	No	3.23
4	50-55	F	19.1	Non-drinker	IBD	No	No	No	No	No	No	No	3.29
5	65-70	F	28.5	Low	IBD	No	No	No	No	No	Yes	No	3.39
6	65-70	M	26.1	Low	IBD	No	No	No	Yes	No	Yes	No	3.88
7	50-55	M	27.9	Non-drinker	IBD	No	No	No	No	No	No	No	4.55
8	40-45	M	22.9	Non-drinker	IBD	Yes	No	No	No	No	Yes	No	5.48
9	65-70	M	31.0	Low	IBD	No	Yes	Aza/6-MP	No	No	Yes	No	6.08
10	60-65	M	30.7	Low	IBD	Yes	Yes	No	Yes	No	No	No	8.62

Aza/6-MP: Azathioprine/6-Mercaptopurine; BMI: Body Mass Index; BTA: Blood Test abnormalities within 6 months of primary care 5-ASA prescription; CKD-3: Chronic Kidney Disease stage 3; Carb/Val: carbamazepine/valproate; DM: diabetes mellitus; F: female; IS immunosuppressive; M: male, ± 5-year age band. Exact age not shown for anonymity.

Supplementary Table 2: The estimated probability that a delayed abnormal blood test would have caused a more serious condition with 5-ASA.

Adverse Event	6-monthly monitoring	Annual monitoring	Two-yearly monitoring
Acute kidney injury*			
Acute liver failure*			
Anaemia*			
Chronic kidney disease	0.001	0.001	0.008
Cirrhosis*			
Drug-induced liver injury	0.001	0.001	0.001
Early fibrosis*			
Low neutrophil count plus sepsis	0.0001	0.0002	0.0004
Neutropenic sepsis	0.0001	0.0002	0.0004
Thrombocytopenia requiring hospitalisation*			
Thrombocytopenia with superficial bleeding*			

*The clinical experts did not think that 5-ASA causes these outcomes.

Supplementary Table 3: The estimated costs and Quality Adjusted Life Years (QALY) losses associated with each condition derived from the literature¹⁻¹¹. Please see health economics methods.

Condition	Costs (£)	QALY loss
Acute Kidney Injury	2022	0.014
Acute Liver Failure	3352	0.651
Anaemia	465	0.001
Chronic Kidney Disease	26,083	1.308
Cirrhosis	21,700	3.042
Drug-Induced Liver Injury	3352	0.651
Early Fibrosis	0	0.075 [†]
Low neutrophil count plus sepsis	2313	2.490
Neutropenic Sepsis	9456	2.490
Thrombocytopenia requiring hospitalisation	1018	0.016
Thrombocytopenia with superficial bleeding	133	0.001

[†]per 6 months unidentified

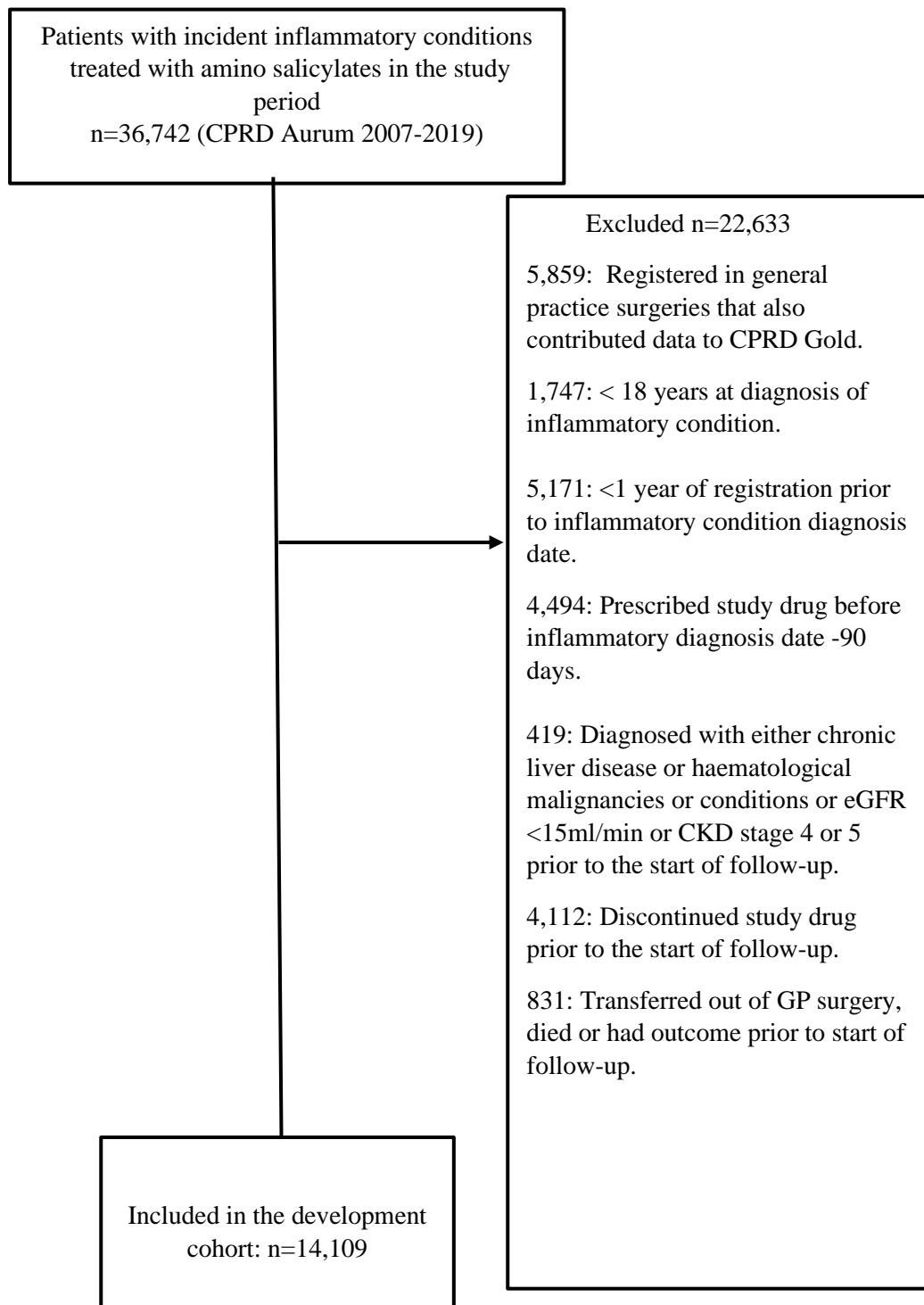
Supplementary Table 4: Disaggregated results in the base case

Decile	Monitoring Appointments				Monitoring Costs Saved compared with current 3-month monitoring (£)			Abnormal blood results identified late compared with current 3-month monitoring			Costs associated with late identification of abnormal blood results (£)			QALY losses associated with late identification of abnormal blood results		
	3-months	6-month	Annual	Biennial	6-month	Annual	Biennial	6-month	Annual	Biennial	6-month	Annual	Biennial	6-month	Annual	Biennial
1	19.67	9.84	4.93	1.99	185.99	278.98	331.62	0.016	0.024	0.029	0.46	0.73	5.94	0.000	0.001	0.004
2	19.67	9.84	4.93	1.99	185.98	278.96	331.59	0.016	0.025	0.029	0.46	0.73	5.96	0.000	0.001	0.004
3	19.67	9.84	4.93	1.99	185.95	278.92	331.54	0.016	0.025	0.029	0.47	0.74	6.01	0.000	0.001	0.004
4	19.66	9.84	4.93	1.99	185.88	278.81	331.42	0.017	0.025	0.030	0.48	0.76	6.14	0.000	0.001	0.004
5	19.65	9.83	4.93	1.99	185.80	278.69	331.28	0.017	0.026	0.031	0.49	0.77	6.29	0.000	0.001	0.004
6	19.60	9.81	4.91	1.99	185.28	277.91	330.34	0.020	0.030	0.036	0.56	0.89	7.26	0.000	0.001	0.004
7	19.52	9.77	4.90	1.99	184.48	276.70	328.90	0.024	0.036	0.043	0.68	1.08	8.74	0.001	0.001	0.005
8	19.45	9.74	4.88	1.98	183.82	275.71	327.71	0.027	0.043	0.049	0.77	1.23	9.97	0.001	0.001	0.006
9	19.36	9.70	4.86	1.98	183.01	274.50	326.26	0.031	0.047	0.056	0.89	1.41	11.46	0.001	0.001	0.007
10	19.11	9.58	4.81	1.97	180.54	270.79	321.82	0.043	0.066	0.080	1.24	1.97	16.00	0.001	0.002	0.010

Supplementary Table 5: Aggregated Results in the base case compared with current 3-month monitoring

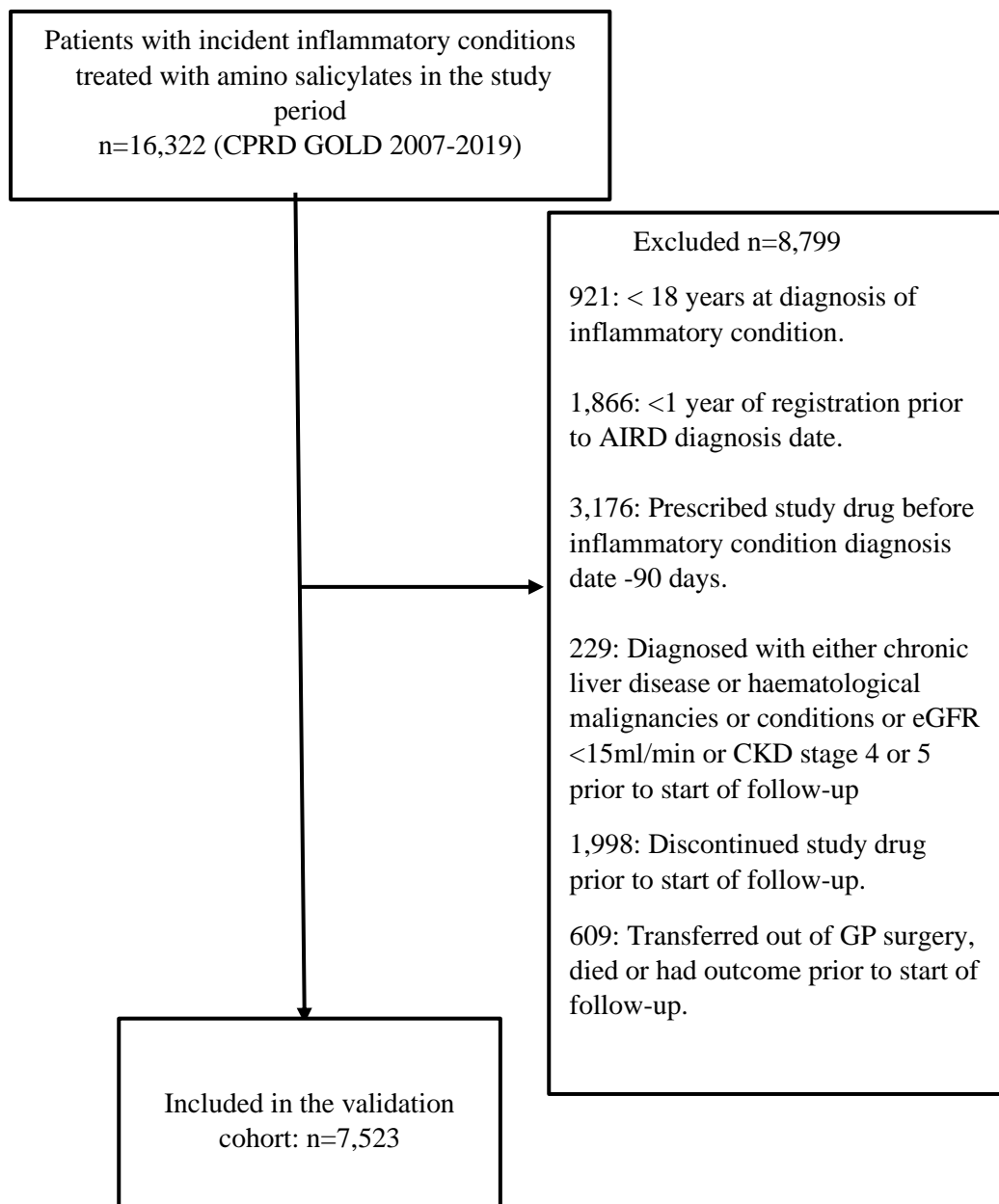
Decile	Net Cost Savings (£)			Net QALY losses		
	6-month	Annual	Biennial	6-month	Annual	Biennial
1	185.53	278.25	325.68	0.0000	0.0001	0.0004
2	185.51	278.22	325.63	0.0000	0.0001	0.0004
3	185.48	278.18	325.53	0.0000	0.0001	0.0004
4	185.40	278.05	325.27	0.0000	0.0001	0.0004
5	185.31	277.92	324.99	0.0000	0.0001	0.0004
6	184.71	277.02	323.08	0.0000	0.0001	0.0004
7	183.80	275.63	320.16	0.0001	0.0001	0.0005
8	183.04	274.49	317.75	0.0001	0.0001	0.0006
9	182.12	273.09	314.80	0.0001	0.0001	0.0007
10	179.29	268.82	305.83	0.0001	0.0002	0.0010

Figure S1: Study population selection criteria for model development



Aminosalicylates were balsalazide, mesalazine and olsalazine, CKD: chronic kidney disease, GP: General practice, CPRD: Clinical Practice Research Datalink.

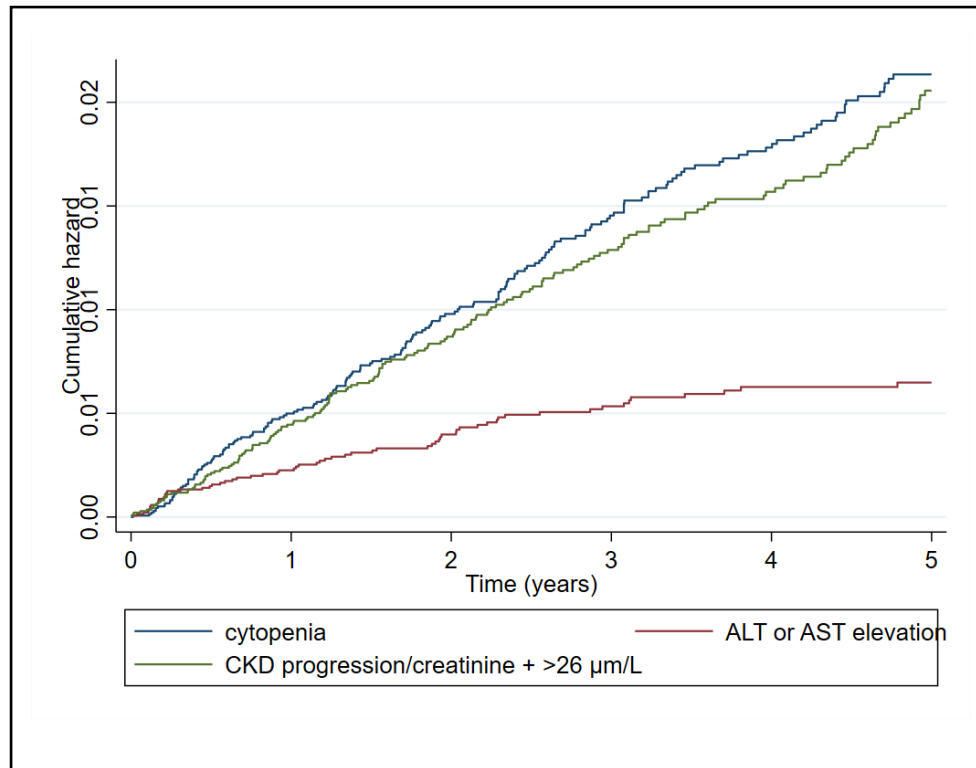
Figure S2: Model validation cohort: Study population selection criteria



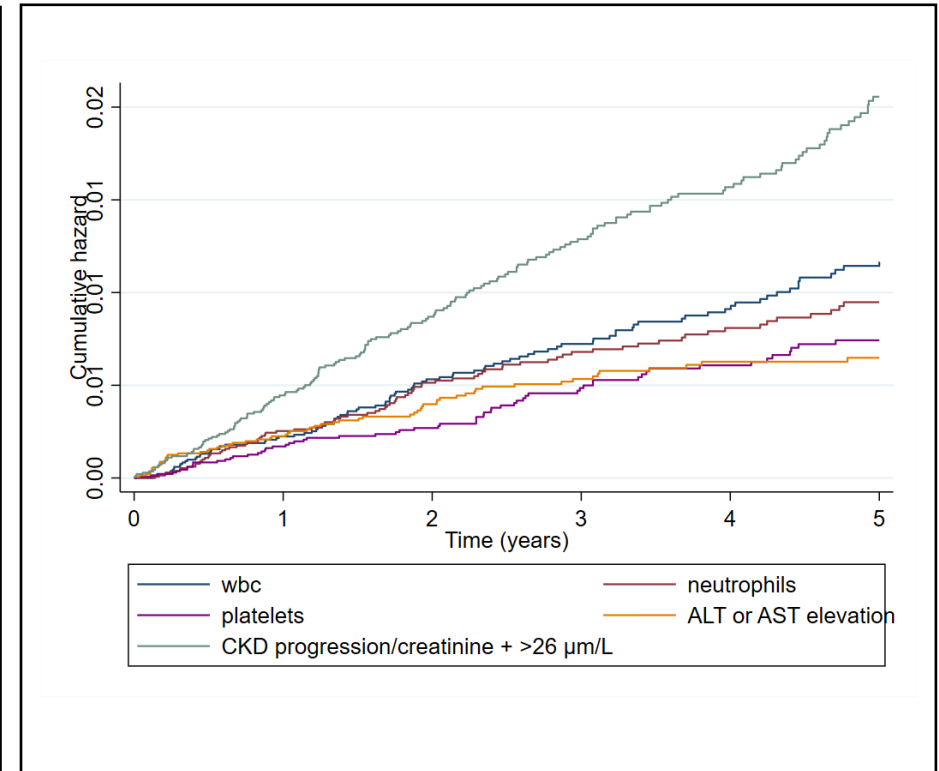
Aminosalicylates were balsalazide, mesalazine and Olsalazine, CKD: chronic kidney disease, GP: General practice, CPRD: Clinical Practice Research Datalink.

Figure S3: Nelson–Aalen cumulative hazard estimates for 5-ASA discontinuation associated with individual blood-test abnormalities*.

A.



B.



* cytopenia defined as white blood cells (WBCs) $<3.5 \times 10^9/l$ or neutrophils $<1.6 \times 10^9/l$ or platelets $<140 \times 10^9/l$; ALT/AST >100 IU/l

Figure S4: Distribution of predicted risk in the model development cohort at 5 years

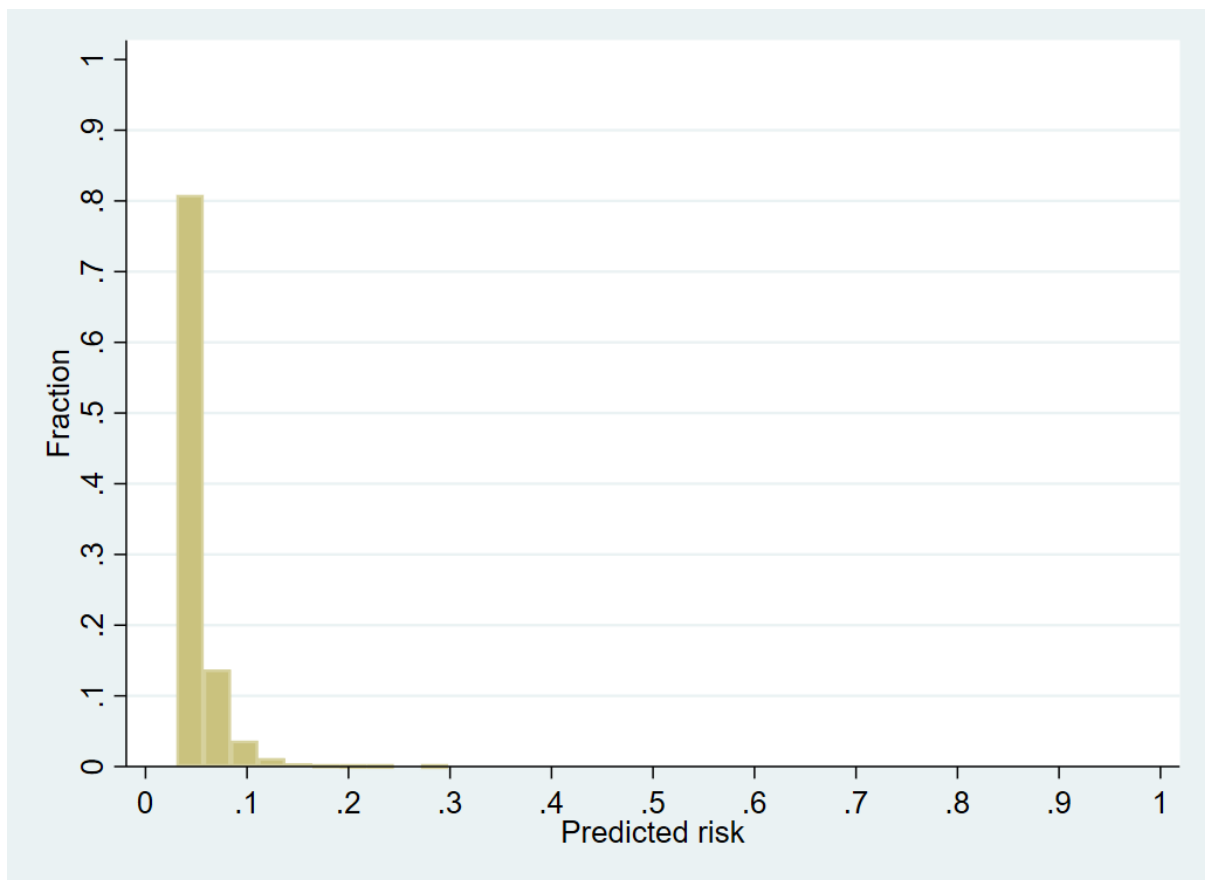
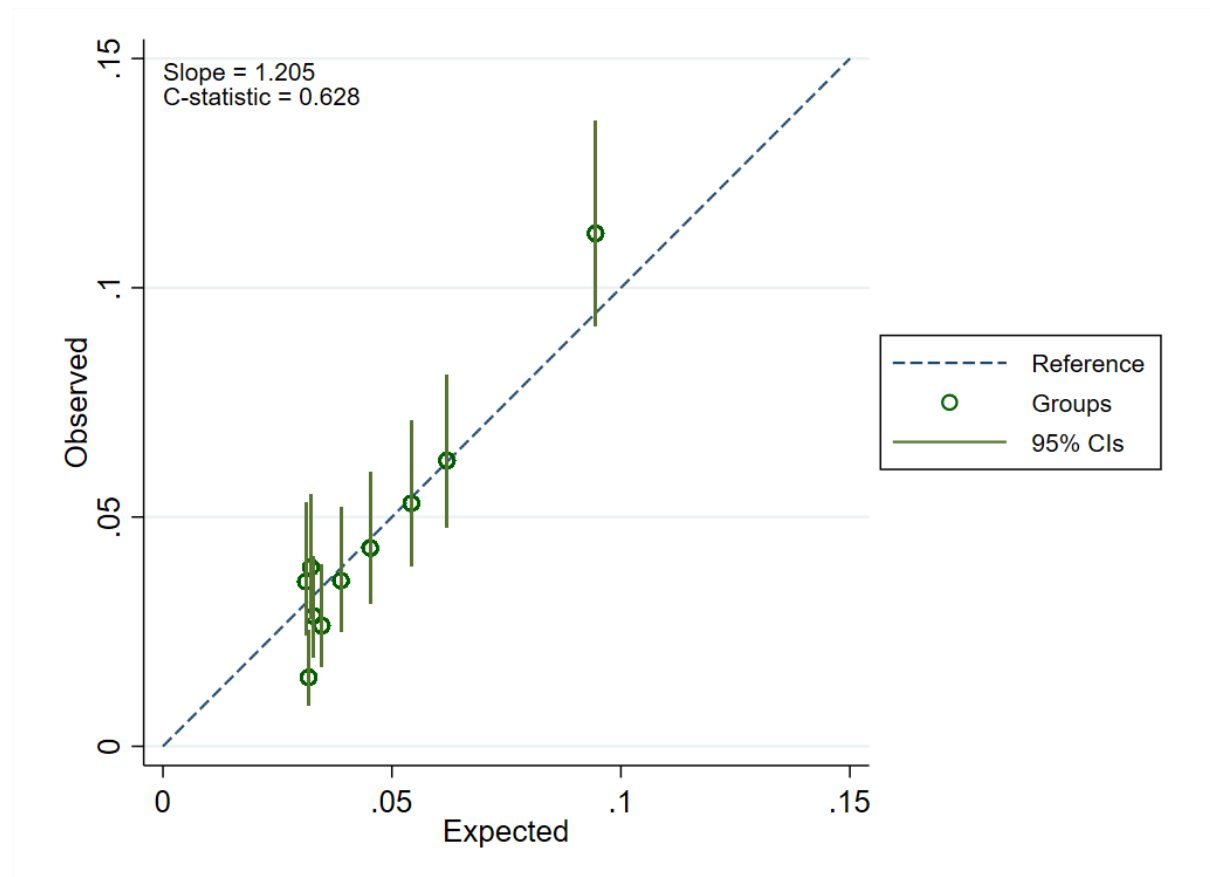
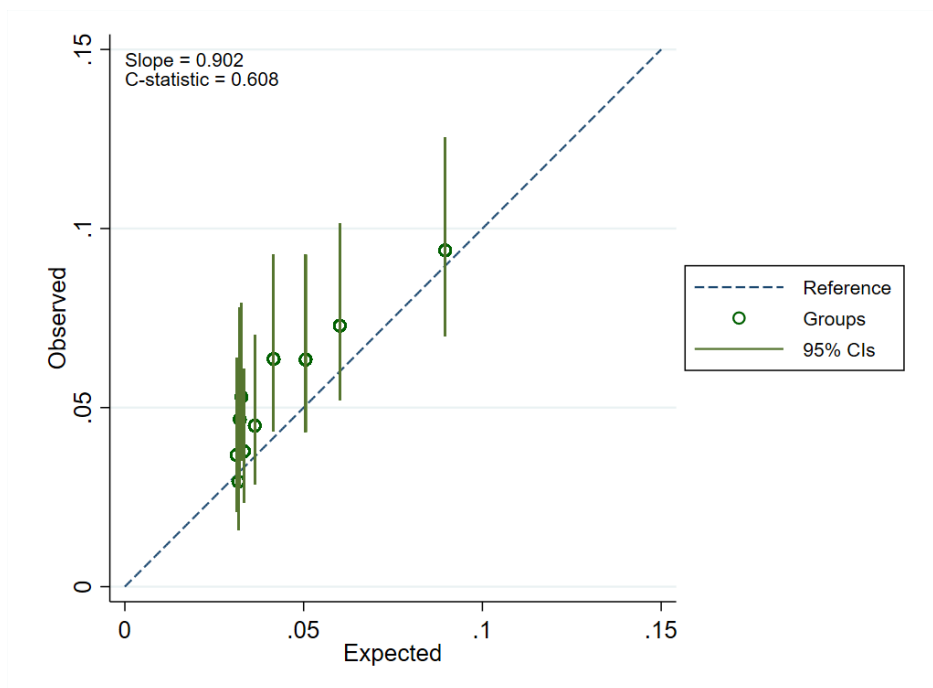


Figure S5: Calibration plot of a prognostic model for 5-ASA discontinuation with abnormal monitoring blood-test results at 5-years in the development cohort¹



¹Data from a single imputed dataset; $So(t=5) = 0.971$

Figure S6: Calibration plot of a prognostic model for 5-ASA discontinuation with abnormal monitoring blood-test results at 5-years in the validation cohort¹



¹Data from a single imputed dataset; $So(t=5) = 0.971$

Figure S7: Distribution of predicted risk in the model validation cohort at 5 years

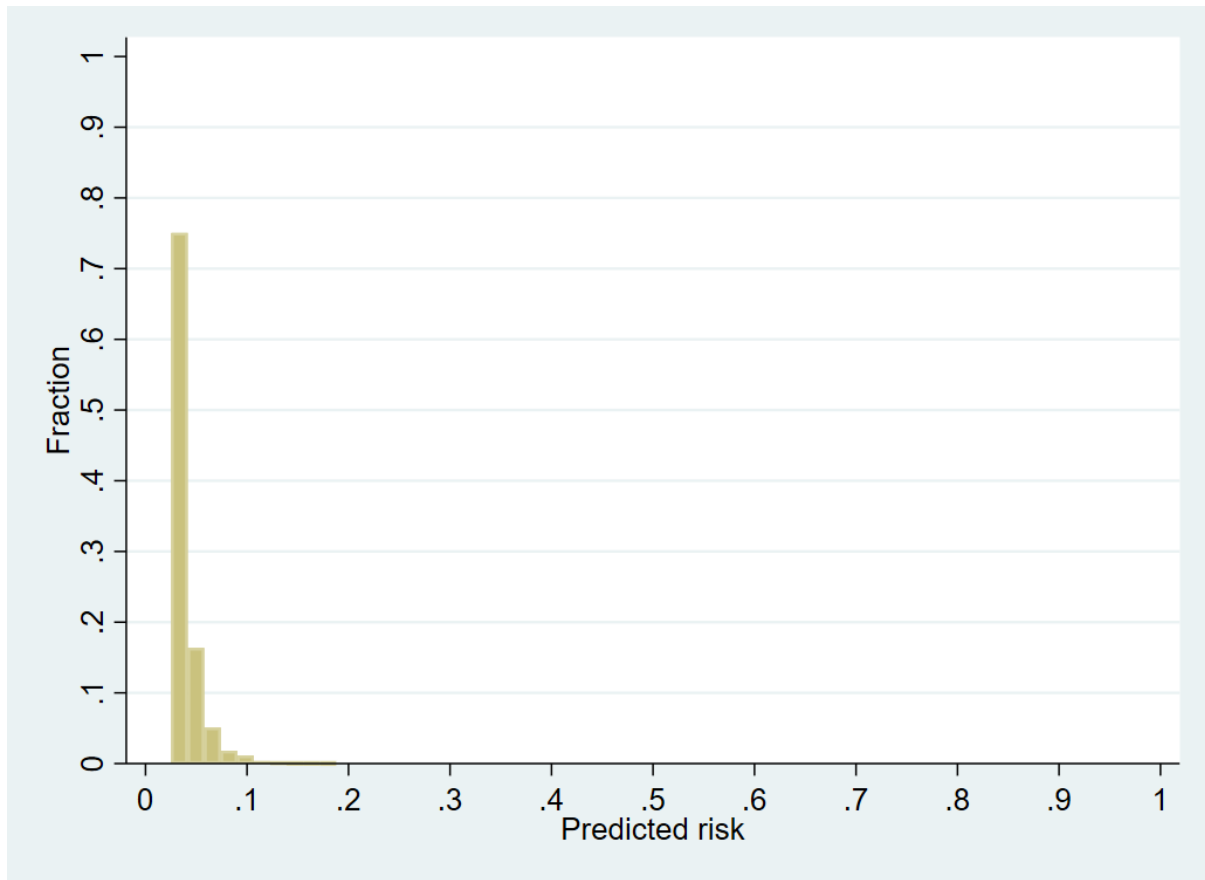
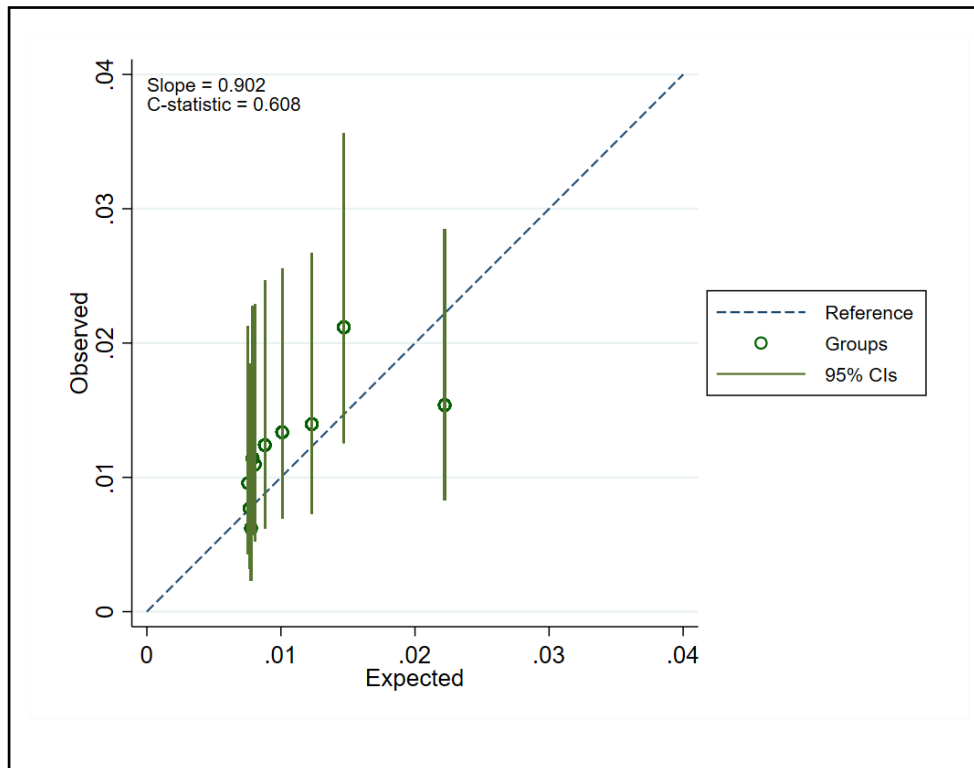
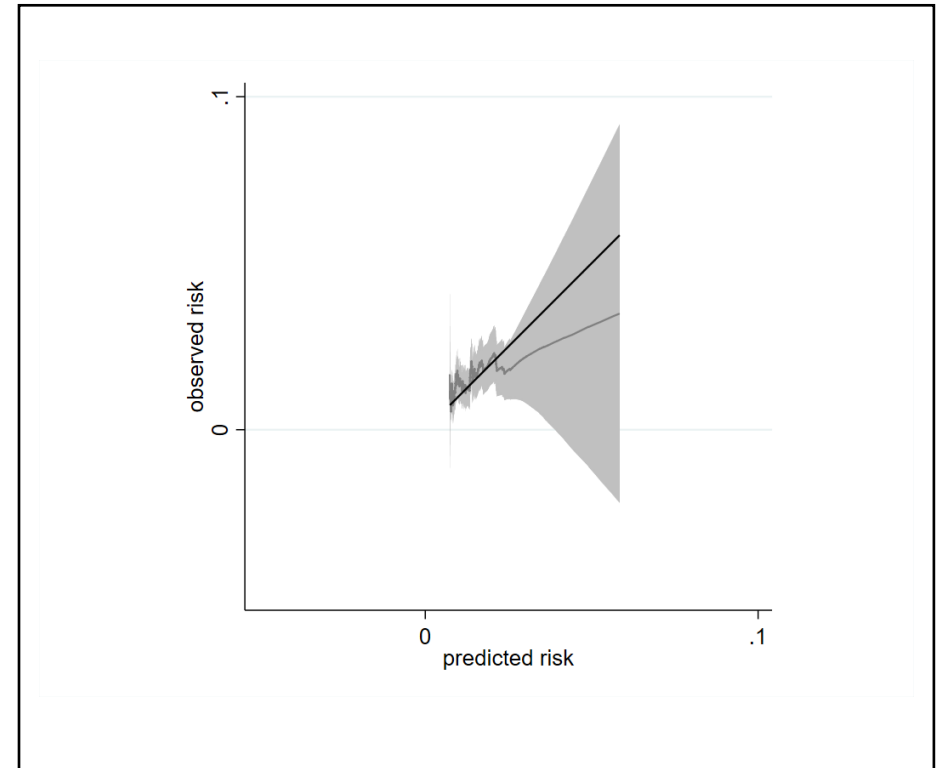


Figure S8: Calibration of a prognostic model for 5-ASA discontinuation with abnormal monitoring blood-test results at 1 year in the validation cohort¹

A: Calibration plot



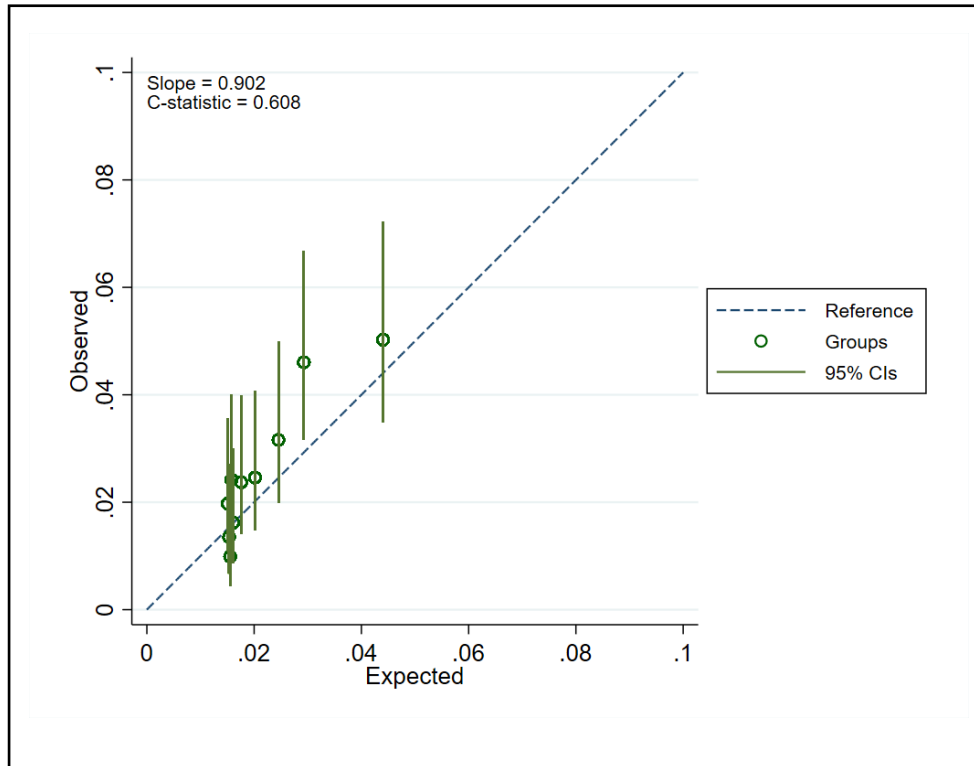
B: Smoothed calibration curve



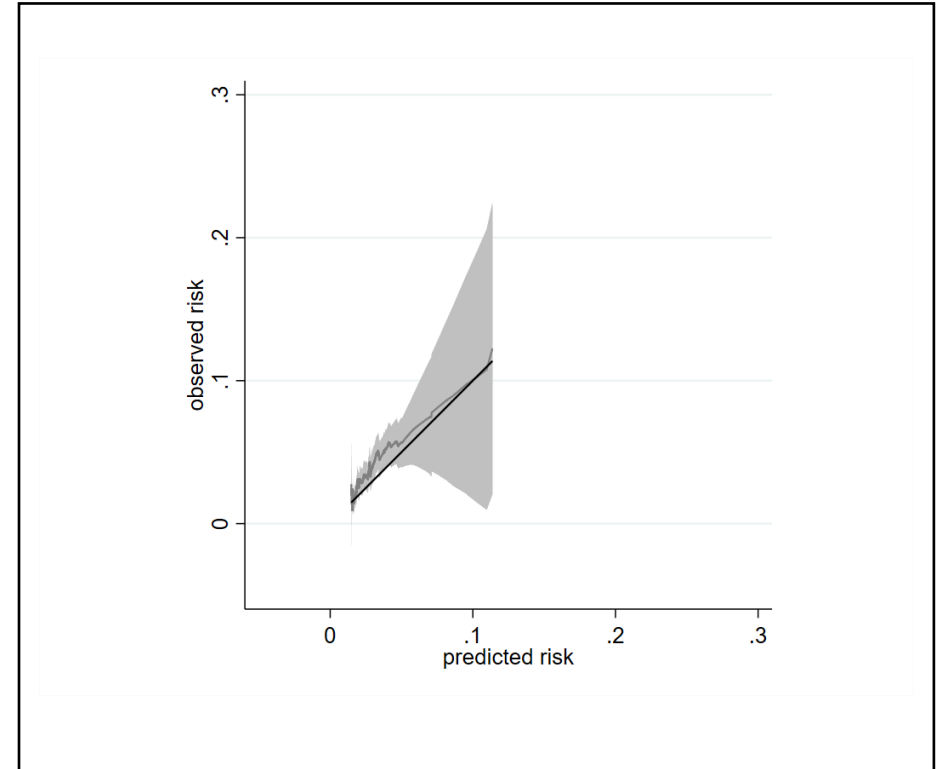
¹Data from a single imputed dataset was used; $S_o(t=1) = 0.993$

Figure S9: Calibration of a prognostic model for 5-ASA discontinuation with abnormal monitoring blood-test results at 2 years in the validation cohort¹

A. Calibration plot



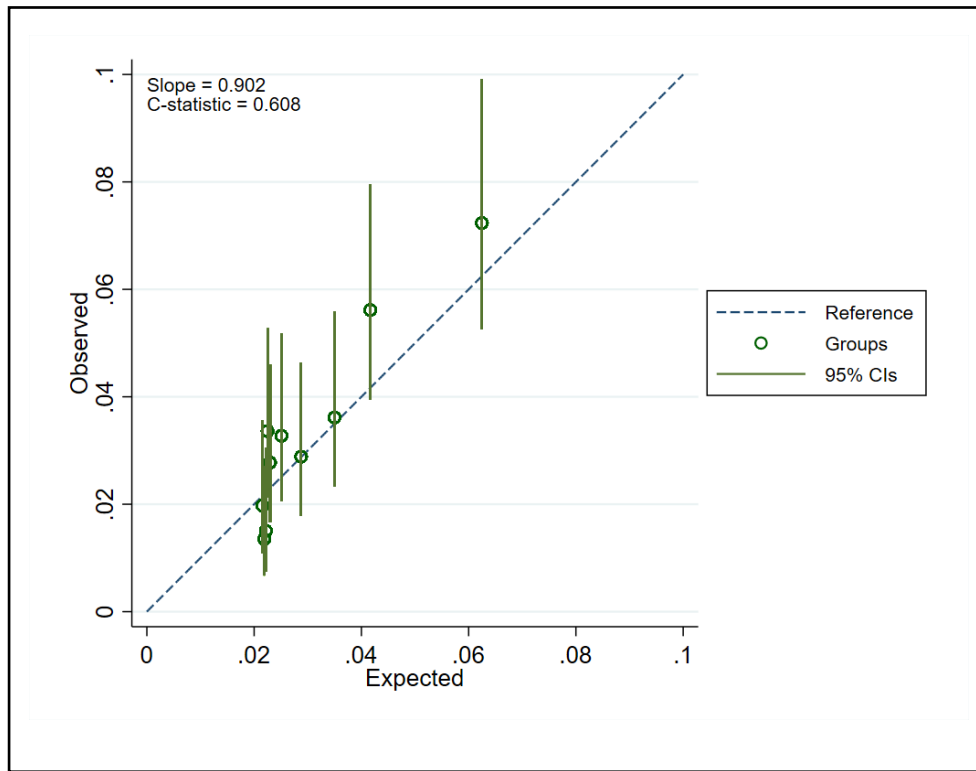
B. Smoothed calibration curve



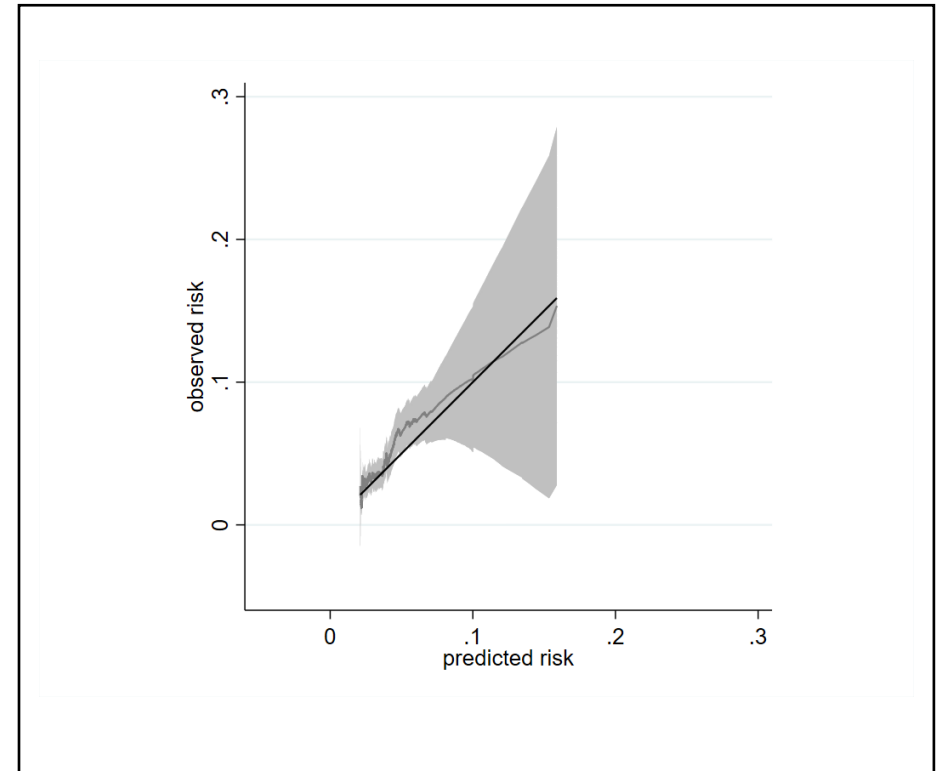
¹Data from a single imputed dataset was used; $S_o(t=2) = 0.986$

Figure S10: Calibration of a prognostic model for 5-ASA discontinuation with abnormal monitoring blood-test results at 3 years in the validation cohort¹

A. Calibration plot



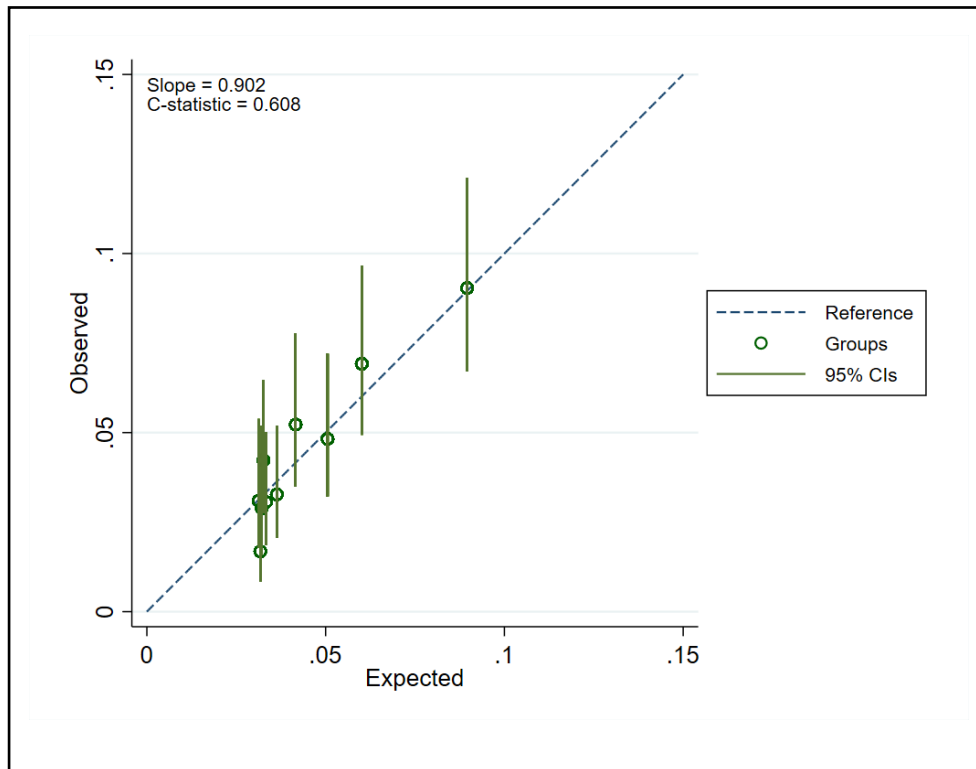
B. Smoothed calibration curve



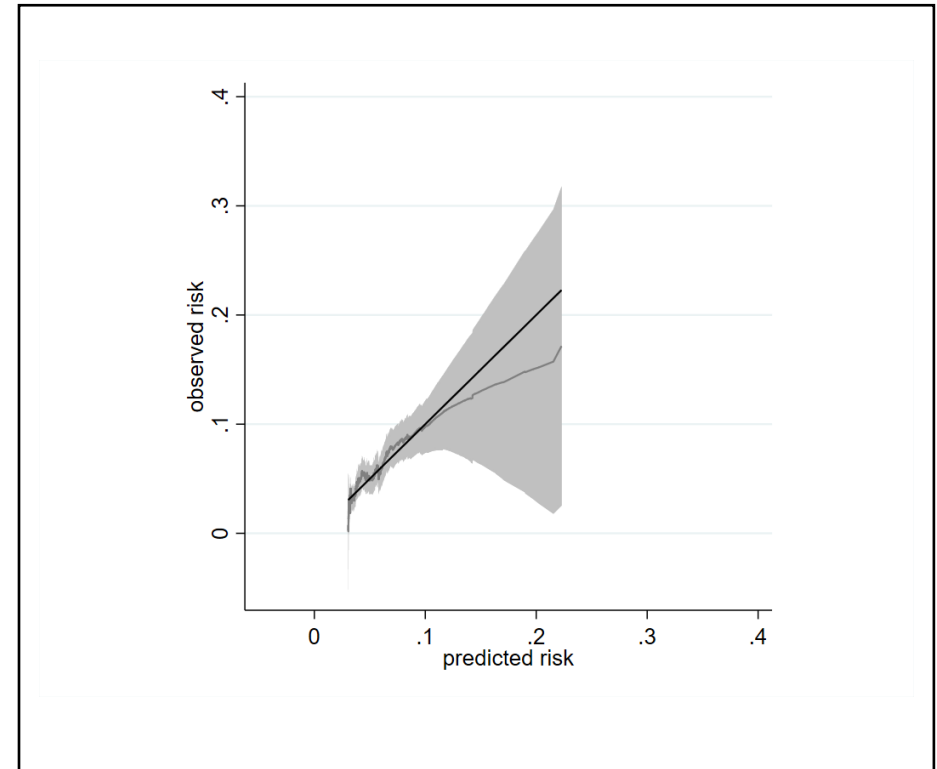
Data from a single imputed dataset was used; $S_o(t_{=3}) = 0.980$

Figure S11: Calibration of a prognostic model for 5-ASA discontinuation with abnormal monitoring blood-test results at 4 years in the validation cohort¹

A. Calibration plot



B. Smoothed calibration curve



Data from a single imputed dataset was used; $S_o(t_{=4})=0.976$

Figure S12: Incremental net monetary benefit results when the risks of serious conditions estimated by clinicians were tripled

