

All-cause, circulatory disease and cancer mortality in the population of a large Italian area contaminated by perfluoroalkyl and polyfluoroalkyl substances (1980-2018)

Annibale Biggeri¹, Giorgia Stoppa¹, Laura Facciolo², Giuliano Fin², Silvia Mancini³, Valerio Manno⁴, Giada Minelli⁴, Federica Zamagni^{3,*}, Michela Zamboni², Dolores Catelan¹, Lauro Bucchi³

¹ Unit of Biostatistics, Epidemiology and Public Health, Department of Cardiac, Thoracic, Vascular Sciences and Public Health, University of Padua, Padua, Italy

² *Comitato mamme NO-PFAS*

³ Emilia-Romagna Cancer Registry, Romagna Cancer Institute, IRCCS Istituto Romagnolo per lo Studio dei Tumori (IRST) Dino Amadori, Meldola, Forlì, Italy

⁴ Statistical Service, Istituto Superiore di Sanità, Rome, Italy

Correspondence

Federica Zamagni, Emilia-Romagna Cancer Registry, Romagna Cancer Institute, IRCCS Istituto Romagnolo per lo Studio dei Tumori (IRST) Dino Amadori, 47014 Meldola, Forlì, Italy.
Email: federica.zamagni@irst.emr.it

Abstract

Background

Perfluoroalkyl substances (PFAS) are associated with many adverse health conditions. Among the main effects is carcinogenicity in humans, which deserves to be further clarified. A clear association has been reported for kidney cancer and testicular cancer. In 2013, a large episode of surface, ground and drinking water contamination with PFAS was uncovered in three provinces of the Veneto Region (north-eastern Italy) involving 30 municipalities and a population of about 150,000. We report on the temporal evolution of all-cause mortality and selected cause-specific mortality by calendar period and birth cohort in the local population between 1980 and 2018.

Methods

The Italian National Institute of Health and the Italian National Institute of Statistics made available the anonymous records of death certificates of residents of the provinces of Vicenza, Verona and Padova (males, n=29,629; females, n=29,518) who died between 1980 and 2018. Calendar period analysis was done by calculating standardized (European standard population 2013) mortality ratios using the total population of the three provinces in the same calendar period as a reference. The birth cohort analysis was performed using cumulative risks for ages 20-84 years.

Results

During the 33 years between 1985 (assumed as beginning date of water contamination) and 2018 (last year of available cause-specific mortality), in the resident population of the *Red area* (the municipalities being connect to the contaminated water plant) we observed 51,621 deaths as compared to 47,731 expected (age-sex SMR: 108; 90% CI: 107-109). We found evidence of raised mortality for diseases of the circulatory system (in particular, heart disease and ischemic heart disease) and malignant neoplastic diseases, including kidney cancer and testicular cancer.

Conclusions

For the first time, an association of PFAS exposure with mortality from circulatory disease mortality was formally demonstrated. Circumstantial evidence regarding kidney cancer and testicular cancer is consistent with previously reported data.

Keywords

Perfluoroalkyl substances
Polyfluoroalkyl substances
PFAS
PFOA
PFOS
Environmental contamination
Environmental monitoring
Health surveillance

Background

The synthetically-made industrial chemicals per- and polyfluoroalkyl substances (PFAS) have been marketed since the 1940s and have been extensively used since the 1950s in a wide variety of applications [1]. According to the U.S. National Institute of Environmental Health Sciences, there are some 15,000 different PFAS molecules, but hundreds of newer and previously unreported PFAS and PFAS-related compounds –the so called “emerging” PFAS– continue to be identified by researchers [2, 3].

PFAS have the unique property of a hydrophobic-lipophilic carbon chain with fluorine atoms rather than hydrogen atoms in at least part of the carbon atoms. Since the carbon-fluorine bond is among the strongest ones, PFAS have a high resistance to degradation. This makes them to be industrially valuable, especially in applications at high temperatures or high pressures or in corrosive environments [1-3].

Closely linked to this industrial success, however, there is the problem that PFAS are difficult to break down through normal chemical, physical or biological processes, including conventional water/wastewater treatment processes [4]. This causes their persistence in the soil, water, air and organisms [5]. PFAS have been found all over the world in a variety of environmental media [4], including surface, ground and drinking water [6-8]. Quantitatively, manufacturing facilities are the most important sources of contamination [9, 10] followed by emissions from municipal and industrial wastewater treatment plants [9, 11-13].

People are most commonly exposed to PFAS by consuming contaminated water or food (including contamination from food packing), or using products made with PFAS, or breathing PFAS-contaminated air. Given their persistence, blood levels of some PFAS may increase over long periods of time [14]. Increasing epidemiologic research has suggested that exposure to high levels of PFAS might be associated with many adverse health conditions, including decreased fertility in men [15] and women [14], birth defects [16], delayed development [17], osteoporosis in young men [18], damage to the immune system [19], reduced antibody response after vaccination, allergy and asthma in children [20], liver disease [21], increased levels of serum cholesterol [22], impaired thyroid function [23], insulin resistance [24], gestational diabetes [25], pregnancy-induced hypertension [26], neuro-endocrine disruption [27] and cancer.

With respect to the latter, the International Agency for Research on Cancer has re-evaluated the carcinogenicity of PFOA and PFOS in November 2023 [28]. PFOA has been classified as ‘carcinogenic to humans’ (Group 1) based on ‘sufficient’ evidence in experimental animals and ‘strong’ mechanistic evidence in exposed humans indicating an association with epigenetic alterations and an immunosuppressive action. In addition, there is ‘limited’ epidemiologic evidence in humans for an association with kidney cancer and testicular cancer. PFOS has been classified as ‘possibly carcinogenic to humans’ (Group 2B) based on ‘strong’ mechanistic evidence. The evidence for cancer in experimental animals has been considered to be ‘limited’ and the evidence regarding cancer in humans ‘inadequate’. This is due to the fact that the few available studies have led to positive findings only sporadically and inconsistently. It appears that there remains much room for further epidemiologic research.

An ever-increasing number of contaminated sites are being discovered in many countries [29]. The most important evidence regarding PFAS exposure has come from a series of studies investigating the community living near the DuPont Washington Works fluoroproduct manufacturing facility in Parkersburg, West Virginia, U.S. [30-33]. However, the world’s largest episode of PFAS water-contamination reported so far occurred in Italy [34]. In 2011, the Institute of Water Research of the National Research Council (IRSA–CNR) was commissioned a study by the Italian Ministry for the Environment to investigate the contamination with PFAS in the most important river basins of the Country [35]. In 2013, the study revealed the surface, ground and drinking water contamination of an area of the Veneto Region (northeastern Italy) involving a total of about 125.000 persons according to early estimates [13, 34].

In the present article, we report a study on the temporal evolution of all-cause mortality and selected cause-specific mortality by calendar period and birth cohort in the population living in the contaminated area between 1980 and 2018.

Methods

Study setting: environmental monitoring and source, area and timing of contamination

Environmental monitoring plan

The results of the study on the contamination with PFAS in the Italian river basins [36] were communicated to the Veneto Regional Administration in the summer of 2013 [37]. Soon after, the Environmental Prevention and Protection Agency of the Veneto Region (ARPAV) established an environmental monitoring plan, which is still operating, with the two-fold objectives of (1) assessing the geographic extension and the level of groundwater and drinking water contamination with PFAS and (2) identifying its source(s). Originally, 12 types of PFAS were being measured in water matrices, namely: perfluorobutanoic acid (PFBA), perfluorobutanesulfonic acid (PFBS), perfluoropentanoic acid (PFPeA), perfluorohexanoic acid (PFHxA), PFHxS, perfluoroheptanoic acid (PFHpA), PFOA, perfluorooctane sulfonic acid (PFOS), perfluorononanoic acid (PFNA), perfluorodecanoic acid (PFDeA), perfluoroundecanoic acid (PFUnA), and perfluorododecanoic acid (PFDoA) [34].

Chemical analysis of drinking water samples during 2013 indicated the presence of PFOA (median, 319 ng/L), PFBA (123 ng/L), PFBS (91 ng/L), PFPeA (70 ng/L), (PFHxA (52 ng/L), PFOS (18 ng/L), PFHpA (14 ng/L) and PFHxS (<10 ng/L) [34]. Further details can be found in another publication [38].

Source of contamination with PFAS

The MITENI (formerly RIMAR) factory, a manufacturing plant located in the town of Trissino (province of Vicenza), has been identified as the most likely source of contamination with PFAS in the region. The factory was established in the 1950s. The production of PFAS was started in 1966 and was terminated in 2018 [39]. Long-chain PFAS (containing ≥ 6 carbons, such as the PFOA, or ≥ 7 carbons, such as the perfluoroalkyl carboxylic acids) were produced between 1968 and 2001, short-chain PFAS (for example, PFBA) between 2013 and 2016, and a mixture of molecules between 2001 and 2013 [39].

The MITENI factory discharged the treated effluent into the municipal wastewater treatment plant, whose output is mixed with the outputs of other four plants and carried by a single sewer pipeline (known as *collettore ARICA*) to the Fratta-Gorzone river. These five plants collect waters from domestic sewage and industrial districts of the province of Vicenza. This makes it impossible to distinguish the effluent originating from the fluorochemical plant from those discharged by the other industrial activities (mainly textile and tannery factories). However, a comparison between the PFAS composition of the primary discharge of the fluorochemical plant and that of the output of the *collettore ARICA* revealed a close similarity [13, 36].

Area of water contamination with PFAS

The contamination of surface and deep waters took place in the area located downstream of the MITENI factory, which has a well-developed agricultural and food industry. The groundwater contamination plume occupies a surface area of 190 square kilometers and involves public aqueducts and private wells across the provinces of Vicenza, Verona, and Padova. Based on the results of the environmental monitoring, the Environmental Protection Agency of Veneto identified 30 municipalities forming an area of maximum exposure (*Red area*), for a population of 153,525 inhabitants in 1 January 2020 [40], a larger number than previously estimated [13, 34]. The *Red area* is further divided into *Red area A*, including the municipalities that are served by the contaminated aqueduct and are also located on the groundwater contamination plume, and *Red area B*, including municipalities served by the contaminated aqueduct but not located on the groundwater contamination plume.

The contamination has been mapped by the Veneto Regional Administration in 2013. The maps are available online [41]. A digital navigable map is available from another website [42]. Fig. 1 shows the map of water contamination by PFOA and PFOS in the years 2013-2015, i.e. when the contamination was discovered and before the full implementation of mitigating or remediation activities. In the map, the 30 municipalities of the *Red Area* served by the aqueduct fed by the contaminated groundwater since 1984 are also shown.

In this study, we defined the exposed population as the resident population of the *Red Area*. The *Red area A* includes the municipalities of (in parentheses, the province to which the municipality belongs) Alonte (Vicenza, VI), Asigliano Veneto (VI), Brendola (VI), Lonigo (VI), Sarego (VI), Noventa Vicentina (VI), Orgiano (VI), Pojana Maggiore (VI), Montagnana (Padova, PD), Cologna Veneta (Verona, VR), Pressana (VR), Roveredo di Guà (VR), and Zimella (VR). The municipalities situated in the *Red area B* are Albaredo d'Adige (VR), Arcole (VR), Bevilacqua (VR), Bonavigo (VR), Boschi Sant'Anna (VR), Legnago (VR), Minerbe (VR), Terrazzo (VR), Veronella (VR), and Urbana (PD). The *Red area B* also includes parts of the municipalities of Agugliaro (VI), Borgo Veneto (PD), Casale di Scodosia (PD), Lozzo Atestino (PD), Megliadino San Vitale (PD), Merlara (PD), and Val Liona (VI).

Timing of water contamination with PFAS

According to estimates from the ARPAV, the contamination of the groundwater began in 1966 in Trissino [43] and reached Montecchio Maggiore in 1970, Almisano in 1984 and Lonigo –situated further south– in 1985.

In the period 1985-1989, unfortunately, several aqueducts drew water the Almisano groundwater source and, in the same area, a large aqueduct was built (*Centrale Madonna di Lonigo*, completed in 1995). This delivers drinking water to the 30 municipalities in the *Red area*. Thus, the whole *Red area* was contaminated since the years 1985-1989 [43].

PFAS exposure via drinking water ingestion from the public aquifer serving the *Red area* has been reduced since 2013, with the implementation of a filtration system with granular activated carbon. The levels of specific PFAS were found to be below the level of detectability of 5 ng/L in 2018. The population served by private wells for drinking water, which lack filtration systems, was estimated at around 18,000 people in 2016.

Food contamination with PFAS

In 2016, the Veneto Regional Administration developed a plan for the monitoring of 12 PFAS congeners in local food matrices. After the implementation, the Italian National Health Institute (ISS) performed a scenario-based estimate of the weekly dietary exposure in the *Red area* [44]. In 2021, food contamination and food contribution to total human exposure were assessed using the individual records of the food monitoring campaigns of the years 2016-2017. The analysis showed that food PFAS contamination was widespread over the entire *Red area* with modest differences [45]. The exportation of local food may have caused exposures outside the *Red area*.

Health surveillance plan

Between July 2015 and April 2016, the ISS performed the first serum PFAS concentration measurements campaign in the local population [46]. PFOA had the highest concentration but detectable levels of eight other molecules (PFBA, PFPeA, PFHxA, PFHpA, PFD_oA, PFBS, PFHxS, and PFOS) were found. The median serum level of PFOA was 14 (95th percentile: 248 ng/mL). For PFBA, the median concentration was below detection and the 95th percentile was 0.6 ng/mL), reflecting its more rapid excretion.

In 2017, the Veneto Regional Administration developed a health surveillance plan for the exposed population [34, 47]. The implementation started in 2017-2018 from the birth cohorts born in 1962-2002 and was subsequently extended to include the other birth cohorts. The plan is based on active personal invitations to undergo measurements of PFAS in serum, laboratory tests and medical examinations mainly to assess serum lipids as well as liver and kidney functionality, followed by specialist diagnostic work-up, if necessary. The plan covers the 30 municipalities of the *Red area*.

In Supplementary Tables S1-S2, the mean, the median and the 95th percentile of serum levels of PFOA and PFOS by attained age at first invitation (range age class: 7-72 years) and year of invitation (2017-2023) to the health surveillance plan are shown [47].

Demographics, migration balance and deprivation index

The background demographic figures of the three reference provinces showed a smooth increase between 1981 and 1991, a steeper growth since 1991 and a plateauing since 2011 (Supplementary Figure S1). There was no appreciable difference between the three provinces and the municipalities of the *Red area*. Peculiar patterns were observed only in the municipalities of Lonigo, where a marked increase occurred between 1981 and 2011, and Montagnana, which showed a decreasing trend since 1981.

The natural balance and the net migration in the years 2003-2017 were consistent with the above patterns, with Lonigo showing a positive balance and Montagnana a negative balance. As expected, the three provincial capital cities of Vicenza, Verona and Padova exhibited a strong negative trend of the natural balance, with a positive net migration occurring in Verona and Padova. (Supplementary Figures S2-S3)

As shown in the age-sex pyramids (Supplementary Figure S4), the age distribution in 1982 and 2018 did not differ between the three provinces and the 30 municipalities of the *Red area*. In the latter, it appears that the maximum impact of the PFAS contamination is experienced by the cohorts born between 1960 and 1970, who were aged 10-20 years in 1982.

The socioeconomic characteristics of the municipalities of the *Red area* did not differ much from the reference populations of the three provinces. In 2011, the material deprivation index was similar (Supplementary Figure S5). The analysis of five major socio-economic characteristics pertaining to deprivation indicators (low education (<6yrs), unemployment, house crowding, house tenure, and single parent families) showed only a relatively larger percentage of low-educated people (32% versus 30%) in the *Red area* population (Table 1). A more detailed picture can be found in the biplot reported in Supplementary Figure S6.

Study rationale and design

The rationale of this study is based on the consideration that the PFAS contamination that occurred in the Veneto Region is extremely important in terms of size of the exposed population and magnitude of exposure. The accident can be taken as a great and tragic *natural* experiment [48]. PFAS exposure of the population began in the second half of the 1980s and depended on the use of contaminated water. The experimental condition consists in being connected to the aqueduct, which acted as an instrumental variable. The actual PFAS exposure could depend on several factors and, among these, on the determinants of contaminated water consumptions. The relationship between being connected to the aqueduct and a disease outcome was not affected by confounding, while the relationship between actual PFAS exposure and a disease outcome could be confounded. An instrumental variable should be unrelated to the outcome, strongly related to the exposure and unrelated to the potential confounders. Being connected to the aqueduct was strongly associated to the exposure and was independent from potential confounders and –of course– from the outcome. As a consequence, comparing the population connected to the aqueduct with an unconnected reference population enables to test a potential causal association. Of course, we should consider the possibility of residual confounding in the definition of the two populations and of potential misclassification, because we had only information at the municipality level. On average, more than 70% of the population of the *Red Area* was served by the aqueduct. In *Red Area A*, furthermore, the population not served by the aqueduct was supplied by private wells containing the contaminated groundwater.

The potential fallacy connected to the use of the information on PFAS exposure at the population level for the definition of the groups being compared can be exemplified by considering the municipality of Lonigo. This municipality has shown a higher serum PFAS concentration in the health surveillance plan and has some specific socioeconomic characteristics that are strongly linked to the volume of water consumption [49, 50] and cardiovascular mortality [51] like education and house tenure. This causes socio-economic factors to act as confounders of the association between PFAS exposure and cardiovascular disease (Supplementary Figure S7).

The availability of mortality data for a time span as long as 1980-2018 enabled a temporal analysis of mortality risk by two different time axes. The temporal variations of mortality were evaluated both by focusing on the effect of calendar period and by investigating the birth cohort influences. The effect of calendar period is interpretable as the effect of the total dose of PFAS since 1984. Therefore, mortality in the 1980-1984 calendar period can be assumed as an internal reference, with the subsequent calendar periods

being characterized by a mortality experience that reflects growing exposure doses. The effect of birth cohort, conversely, is interpretable as the effect of the exposure which begins at different ages. Therefore, the exposure started after at least 60 years of age for the cohort born in 1920-1929 and after 25 years of age for the cohort born in 1960-1969.

The bioaccumulative nature of PFAS led to a constantly increasing exposure of the population. Since water filtration was implemented starting from 2013, it could potentially impact the last time segment, i.e. 2015-2018. These public health measures, coupled with the health surveillance activities and changes in lifestyle and health behaviour after the discovery of water contamination, may have contributed to a reduction of PFAS exposure of the population.

We used the population of the three provinces where the *Red area* is situated as a reference population. In a sensitivity analysis, we used as reference the population of the three provinces excluding the 30 municipalities of the *Red area* (the results –not shown– are available from the corresponding author upon request).

Source of mortality data

The Italian National Institute of Health (ISS) made available to us the anonymous records of death certificates of all males ($n = 29629$) and females ($n = 29518$) who were residents of the provinces of Vicenza, Verona and Padova and died between 1980 and 2018 (more recent data were not yet ready for use at the time of analysis). Records were extracted by the Statistical Service of the ISS from The Italian National Institute of Statistics cause-specific mortality database using the codes from the International Classification of Diseases (ICD)-9 [52] between 1995 and 2002 and ICD-10 [53] thereafter. The ICD-9 codes have been converted into ICD-10 codes. (Supplementary Table S3).

In order to facilitate other comparisons, observed deaths, directly standardized mortality rates (2013 European standard population) per 100,000, 0-59 and 60-85 cumulative mortality rates, attributable deaths and probability of 0 attributable deaths are provided in Supplementary Table S4.

Statistical analysis

Data were aggregated into 18 five-year age groups (0-4, 5-9, ..., ≥ 85) and 8 five-year periods (with the exception of the last one which is a four-year period: 1980-1984, 1985-1989, 1990-1994, 1995-1999, 2000-2004, 2005-2009, 2010-2014, ..., 2015-2018). Figure 2 shows the Lexis diagram and the reconstruction of birth cohorts. The 15 cohorts that were considered in the analysis are highlighted.

Calendar period analysis was carried out calculating direct standardized rates (European standard population 2013) and the standardized mortality ratios (SMRs) using the rates observed in the populations of the three provinces to which the 30 municipalities belong (Vicenza, Verona and Padova) for the same calendar period as reference.

The birth cohort analysis were performed using cumulative risks 20-84 (CR) years and cumulative SMRs (SMR_{cum}) 20-84 years.

Let define O_{ic} and PY_{ic} the number of observed deaths and person years of observation for the i -th age class and c -th birth cohort. We fitted a log-linear Poisson regression model:

$$\log(O_{ic}) = \beta_i + \beta_c^{cohort} + \log(PY_{ic})$$

where β_i is the coefficient for the i -th age-class (logarithm of the specific i -th age-class rate), β_c^{cohort} the coefficient for the c -th cohort (logarithm of the ratio between the rate for the c -th cohort and the rate of the reference cohort) and $\log(PY_{ic})$ is the offset, that is, the weight to be attributed to the observed frequency. For the analysis of the age-cohort model, the central cohort or the one with the largest number of complete data is usually used as a reference category and in our case the cohort of those born in the years 1935-1944 was chosen [54, 55]. The intercept is not included in the model, so the age-specific coefficients can all be interpreted directly as logarithms of the specific rates. The cumulative risk 20-84 for the c -th cohort is obtained as

$$CR_c = 1 - \exp\left(-5 \sum_{i=20-24}^{I=80-84} (\beta_i + \beta_c^{cohort})\right)$$

and its confidence interval is obtained through the delta method [56].

We calculated also cumulative the SMR_{20-84} for the analyzed birth cohorts.

The regression model is similar to the one described above, but with the logarithm of the number of expected cases as offset. For the c -th cohort the cumulative SMR_{20-84} is given by:

$$SMRcum_c = \frac{1}{13} \sum_{i=20-24}^{I=80-84} \exp(\beta_i + \beta_c^{coorte})$$

In this case, the number of expected cases was obtained for each calendar period on the basis of the age-specific rates of the reference population [57].

More details can be found in Supplementary Table S4.

The analysis of the trend in mortality from testicular cancer is difficult due to the strong increase in survival since 1980. For Italy, an age-period-cohort analysis showed a striking decrease in mortality after year 2000 [58]. We therefore analyzed mortality for testicular cancer only for the period 1980-1999.

Results

Overall, during the 33 years from 1985 (assumed date of water contamination) to 2018 (last year of availability of cause-specific mortality), in the resident population of the *Red area* we observed 51,621 deaths over 47,731 expected deaths (according to the mortality rates of the three provinces which include the *Red area* population), i.e. an excess of 3890 deaths (90% CI: 3543-4231). In other words, every three days there were 12 deaths over 11 expected. The overall SMR was 108 (90% CI: 107-109). In Supplementary Table S5, the SMRs 1985-2018 for all the analyzed causes of death are shown. We found evidence for increased mortality from diseases of the circulatory system (particularly heart diseases and ischemic heart diseases), diabetes, diseases of the digestive system, malignant neoplastic diseases (in men), liver cancer (in men), lung cancer (in men), female breast cancer, and kidney cancer. In general, all excesses were larger for the population living in the *Red area A*.

To summarize the time pattern, we compared the SMR for the period 1980-1989 with the overall SMR for the period 1980-2018. This is equivalent to saying that, adopting a conservative approach, we considered the 1980s as a period without considerable population exposure. We also compared the SMR for the last observed period, 2010-2018, with the overall SMR for the years 1980-2018. In other words, we considered the years 2010-2018 as the period with the highest level of cumulative exposure. (Supplementary Table S6).

For all causes of death, we found strong evidence for an increased mortality risk since the baseline level of the 1980s, an increase that was present even after 2010. This pattern was observed both in the *Red Area* and particularly in the *Red Area A* and both in males and females.

Mortality from diseases of the circulatory system, heart diseases and ischemic heart disease showed a comparable trend.

Diseases of the digestive system and diabetes showed a mortality increase after 2010, although this was not observed in the *Red Area A*.

Mortality from malignant neoplasm increased after the 1980s in both sexes. The pattern for specific cancer sites is less clear due to larger statistical uncertainty. We did not find evidence for increasing mortality from liver, lung, breast, ovarian and thyroid cancers and malignant neoplasms of the lymphohematopoietic system. We found evidence for an increased risk of dying from kidney cancer in both sexes and testicular cancer.

The excess risk could also vary by birth cohort, being more severe the younger the age at first exposure. If the time trend is linear, however, we cannot disentangle the effect of calendar period from the

effect of birth cohort. Due to statistical consideration regarding the sample size and the number of events, we performed an age-period-cohort analysis on all causes mortality. The results showed a greater importance of the birth cohort time axis among men, while for women we found more relevant the calendar period time axis (see Table 2). In the following we describe the main results in term of birth cohort and then of calendar period.

Birth cohort analysis

All-cause mortality

Figure 3 shows the cumulative SMR for all-cause mortality. Among women, panel B shows that the cumulative SMR for all-cause mortality grew from the cohort born in 1920-1929 and peaked (RR: 1.15; 90% confidence interval (CI): 1.05-1.25) in the birth cohort of 1945-1954, i.e. those women exposed from the age of 35-39 and older. Notably, the SMRs among women aged less than 35 years in 1984-1989, born after 1960, did not differ from the reference population.

Among men (panel A), the cumulative SMRs rose consistently and almost linearly starting with those born in 1920-1929 and after, with a peak (RR: 1.31; 90% CI: 1.13-1.49) in the birth cohort of 1970-1980. This reflected the growing cumulative exposure to a persistent organic pollutant. The birth cohort dimension, thus, was more important than the calendar period. By the way, comparing the two sexes, the cumulative SMRs among women born until 1945-54 rose more steeply than among men. Among men, the RR of 1.14 (90% CI: 1.05-1.22) was reached by the birth cohort of 1955-1964, i.e. ten years later than women.

Circulatory mortality

These patterns are similar for diseases of the circulatory system but with greater statistical uncertainty.

Cancer mortality

Figure 4 shows that, among females, the cumulative SMR for mortality from malignant tumours grew starting with the birth cohort of 1945-1954 and peaked (RR: 1.52; 90% CI: 0.85-2.19) in the cohort of those born in the years 1975-1984, i.e. the women exposed from the age of 5-9 years. Among males, the cumulative SMRs rose almost linearly starting with those born in 1935-1944 and after, peaking (RR: 1.35 90% CI: 0.71-1.98) in the birth cohort of 1975-1984, i.e. the men exposed from the age of 5-9 years. Patterns similar to this were also observed for specific tumour sites but with strong statistical uncertainty.

Calendar period analysis

Supplementary Table S5 shows the observed deaths, the SMRs and the 90% CI for each 5-year calendar period between 1980 and 2018, by sex and cause of death. Here we point out the most relevant findings.

Circulatory mortality

Figure 5 shows the sex- and cause-specific SMR according to calendar period. The SMR exceeded the null value from the calendar period 1985-1989 onward, in both women and men. There was no evidence for a decrease after 2014. In the calendar period 1980-1984, no excess risk was evident. The SMRs in the population of the *Red area A* were higher, peaking in 2015-2018 at 131 (90% CI: 123-139) for females and 120 (90% CI: 111-129) for males.

Cancer mortality

With respect to malignant neoplasms (Table 3) we found an increasing trend by calendar period in both sexes. Taking the 1980s (1980-1989) as a reference and considering two broad time periods (1990-2009 and 2010-2018), we observed a clear period effect (LR: 10.66; 2 df; $p=0.005$), without evidence for a difference by sex (LR: 2.18; 2 df; $p=0.337$). Consistently with the long latency period for cancer, an excess risk was observed more than 20 years after the water contamination (see Table 4 for details).

Kidney cancer mortality

Figure 6 shows the sex and cause-specific SMR according to calendar period. The SMR by calendar period exceeded the null value from 2015-2018 in both women and men. In the period 1980-1984, no excess was evident. Similar considerations apply to kidney cancer mortality figures for the *Red area* overall, as summarized in Table 5.

The age-sex standardized SMR for the period 2010-2018 was 1.14 (one-sided mid-p value=0.066). In the last period observed (2015-2018), the SMR was 1.26 (90% CI: 1.02-1.54; one-sided mid-p-value=0.034) (see also Supplementary Table S5).

These values are higher for the *Red Area A*, with 41 observed deaths versus 23.7 expected (one-sided mid-p-value=0.0006). The SMR was 175 (90% CI: 124-241) for males and 169 (90% CI: 102-264) for females. The age-sex standardized SMR was 173 (90% CI: 132; 221).

We found 17 attributable cases over 41 observed in the four-year calendar period 2015-2018, corresponding to 4 attributable deaths per year in the last period of follow-up (2015-2018).

Noticeably, when restricting the analysis to renal cell kidney cancer (ICD-10 C64 code) for the period 2010-2018 in the *Red area*, we found 38 deaths versus 26 expected among males, for a SMR of 148 (90% CI: 111-194), 20 deaths versus 14 expected among females, for a SMR of 140 (90% CI: 111-204).

Testicular cancer mortality

In the time period 1985-1999, we observed 6 deaths versus an expected number of 4.3, for a SMR of 140 (90% supported range: 61-275) (mid-p-value=0.204). After 1999, no deaths for testicular cancer were recorded. In the first time period, 1980-1984, we observed one death versus 2.4 expected.

Restricting the analysis to the population living in the *Red Area A*, we found 5 deaths in the period 1985-1999 versus 1.95 expected, for a SMR of 256 (90% CI: 101-539; one-sided mid-p-value= 0.032) (Supplementary Table S5).

Discussion

Main findings

During the 33 years from 1985 (assumed date of water contamination) to 2018 (last year of available cause-specific mortality data), in the resident population of the *Red area* (the municipalities being connect to the contaminated water plant) we observed 51,621 deaths over 47,731 expected (age-sex SMR: 108; 90% CI: 107-109). The overall burden was, therefore, an excess of 3,890 deaths (90% CI: 3543-4231). In other words, every three days we estimated 12 deaths over 11 expected deaths. We found evidence of increased mortality for diseases of the circulatory system (particularly heart diseases and ischemic heart diseases), malignant neoplastic diseases, kidney cancer and testicular cancer.

Comparing the data on the progression of contamination in time and space with the data on the production of specific molecules, it clearly appears that these effects should mainly be attributed to long-chain PFAS, that is, PFOA and PFOS [39].

Interpretation

All-cause mortality

With respect to all-cause mortality, both sexes showed an excess risk. As there was strong evidence for an increase in mortality in the most recent birth cohorts, we suggest that this is the effect of PFAS exposure during human early development. An interesting finding was that, for women, the risk peaked in the birth cohort of 1945-1954, that is, for women exposed from the age of 35-39 and older. Women aged less than 35 years in 1984-1989, conversely, did not experience any excess risk. In fact, this protection status was probably accounted for by multiparous women, because nulliparous ones have been demonstrated to have higher PFAS concentrations [59]. It is worthy of note that this has also been observed in the Veneto Region, as can be seen from data in Table 3 and supplementary Table S1 in the article by Pitter et al. [34]. The

protection status of multiparous women is explained by the accumulation of PFAS in the placenta [60] coupled with trans-placental transmission. This mechanism, together with breastfeeding, is the most important determinant of PFAS exposure in early life [61].

Circulatory disease mortality

The striking increase in mortality for diseases of the circulatory system, heart disease and ischemic heart disease is undoubtedly the most valuable finding of this study. Given the study design of our investigation, we can interpret the results as the consequences of PFAS exposure and acknowledge it as credible causal inference. The effect of PFAS exposure on cardiovascular disease is most likely mediated through the atherosclerotic process. PFOA increases the serum levels of total cholesterol and low-density cholesterol [62]. Evidence has been obtained with cross-sectional studies [22] and longitudinal studies [63]. Notably, several significant associations of PFAS serum levels with multiple markers of cardiovascular disease have also been observed in the Veneto Region, including blood pressure [64], triglyceride levels [64, 65], total cholesterol and low-density cholesterol in children and adolescents [66] as well as young adults [64].

We raise the hypothesis that a second mechanism leading to an increased risk of cardiovascular disease in PFAS-exposed populations is mediated through the occurrence of posttraumatic stress disorders caused by the severe psychologic trauma. The finding that the risk showed no or minimum decrease after 2014 provides circumstantial evidence for this. It is known that exposure to an environmental contamination resulting from industrial processes or accidents is psychologically stressful for the affected communities [67-69]. Our hypothesis is further supported by two local studies that have shown, in particular, an unfavourable impact of the contamination with PFAS in the area on the behaviour and the psychologic health of children as well as parents. Girardi et al. have shown that PFAS exposure during pregnancy and early life can adversely impact neurodevelopment and cause greater behavioral difficulties [70]. Menegatto et al. have evaluated the psychosocial impact on people who live in polluted areas and its consequences for the parental role [70, 71]. According to this second study, the uncertainty about the health effects of PFAS exposure is a major factor of stress particularly for families with children. This is due to parents' anxiety regarding the health and the quality of life of their children, combined with the sense of responsibility and the inability to control the destiny of their families [72]. Posttraumatic stress disorders, in turn, are known to be associated with major risk factors for cardiovascular disease, including hypertension and diabetes, and with major cardiovascular disease outcomes such as myocardial infarction and heart failure [73]. In the long term, environmental stressors may lead to allostatic overload, which occurs when stress causes physiological changes and imbalances in stress mediators such as glucocorticoids, excitatory amino acids, and cytokines [74]. Through these processes, chronic stress can further increase the risk of hypertension and coronary heart disease which may also make individuals more susceptible to pollutants [75]. Chronic stress itself interacts with exposure to pollutants and amplifies their effects by compromising, for example, the immune system [76].

The importance of our study lies in the fact that, despite the evidence on atherosclerosis and posttraumatic stress disorders as direct causes of cardiovascular disease, there has been insufficient epidemiologic demonstration so far of an association between PFAS exposure and the final outcome. As has been hypothesised [77], this might be due to the anecdotally reported positive association between PFAS exposure and high-density cholesterol [66] coupled with an inverse association between the latter and the risk of cardiovascular disease. A notable detail is that, in the study area, an increased level of high-density cholesterol in people exposed to PFAS has actually been demonstrated [64, 66]. Apart from this, the role of unknown confounders in masking the indirect relationship between PFAS exposure and cardiovascular disease has been discussed [78]. Our study, which took advantage of the natural experiment in the *Red area*, and, as a consequence, the present study is the first to indicate a clear role of PFAS exposure on cardiovascular mortality.

It is also necessary to draw attention to the consistency between our results about mortality from circulatory diseases and the ecological study by Mastrantonio et al., conducted in the same geographic area, given the differences in design, identification of the exposed population and potentially associated biases [79].

In the *Red area*, incidentally, directly standardized (2013 European standard population) mortality rates for circulatory system disease in 1985-2018, i.e. 35.9 per 10,000 among men and 26.5 among women, exceed those observed in Italy as a whole in 2019, i.e. 33.3 and 23.7, respectively (data not shown).

Kidney cancer and testicular cancer mortality

The International Agency for Research on Cancer has recently classified PFOA as ‘carcinogenic to humans’ (Group 1) and PFAS as ‘possibly carcinogenic to humans’ (Group 2B) [28]. With respect to single cancer sites, there is ‘limited’ epidemiologic evidence in humans for an association between PFOA exposure and kidney cancer as well as testicular cancer. Our findings add some evidence to the existing literature. As far as kidney cancer is concerned, we found a consistent increase in mortality in the exposed population and even higher in the *Red area A* population. Steenland and Woskie observed a risk increase in a cohort of subjects occupationally exposed to PFOA [31], which was not the case for the occupational cohort reported by Raleigh et al. [80]. In a previous ecologic mortality study from the Veneto Region comparing areas with and without PFOA-contaminated drinking water, a moderate excess risk of kidney cancer among women (SMR: 1.32; 95%, CI: 1.06–1.65) was found [79]. In a case-control study, a positive exposure–response trend for several PFAS including PFOA was observed [81]. These findings should be considered in relation to the fact that tetrafluoroethylene is a kidney carcinogen in rodents [82] and that exposure to PFOA and exposure to tetrafluoroethylene are strongly correlated [31]. No animal studies have found an association between PFOA and kidney cancer, but PFOA concentrates in renal tissues. This means that our finding is plausible.

With respect to testicular cancer, mortality is a weak outcome due to the recent marked improvement in survival. However, before year 2000, we found a consistent increase in mortality, particularly in the most exposed population living in *Red Area A*. For the period 1997-2014, an analysis on hospital discharge data on orchiectomies for testicular cancer showed a positive association with PFOA exposure at the ecological level [28]. Furthermore, an ecologic study has already found higher mortality in PFAS-exposed areas of the Veneto Region [79]. An excess risk was reported by a cohort study with high exposure to PFOA [83] and a case-control study [32]. Both found a clear positive exposure-response. PFOA exposure is associated with testicular cancer in rodents [29]. According to a literature review, the epidemiologic evidence is supportive but not definitive [77]. Caution was also suggested by a second review [29], because the mechanism by which PFOA causes tumours in rats seems less relevant in humans [84]. According to a meta-analysis, conversely, the link with testicular cancer is probably a causal one [85]. In part, this uncertainty reflects methodological constraints. Case ascertainment in the evaluation of the risk of testicular cancer is almost certainly biased downward if the endpoint is mortality, because cisplatin-based combination chemotherapy and the refinement of post-chemotherapy surgical procedures have greatly improved long-term survival in most patients [86].

Comparison with previous research from the area of contamination

Several previous studies have evaluated the health surveillance data collected in the *Red area*. The degree of consistency between their results and our own is considerable. Statistically significant associations of PFAS serum levels with blood pressure and triglyceride levels, two components of the metabolic syndrome, have been observed [65]. In children and adolescents, significant associations have been detected between PFOA, PFOS, PFHxS, PFNA, and tPFAS and total cholesterol, low-density lipoprotein cholesterol and, to a lesser extent, high-density lipoprotein cholesterol [66]. In young adults, PFOA, PFOS, and PFHxS were associated with total cholesterol, low-density lipoprotein cholesterol and high-density lipoprotein cholesterol, with PFOA and PFHxS being also associated with triglycerides [64]. An association between the serum levels of PFOA, PFOS, PFHxS and PFNA and multiple markers of cardiovascular risk was also found in a subgroup of 232 men formerly employed in the factory of Trissino and attending the health surveillance programme [87]. A possible influence of PFAS exposure on lipid metabolisms during pregnancy has been reported [88].

An ecological mortality study showed higher rates for multiple causes of death in the contaminated municipalities [79]. An occupational cohort study has been conducted on workers employed in the factory of Trissino. The study found an increase of the risk of liver cancer, liver cirrhosis, diabetes, and haematologic malignancies in 462 men in association with the highest cumulative internal dose of PFOA [39]. Others have

suggested an additional causal role of PFAS in the atherosclerosis process, mediated through an impaired downstream signaling of platelets' activation and aggregation [89].

Methodological issues

Some methodological issues of this study need to be mentioned. First, the study is based on aggregate data at the municipality level and the interpretation of the results depends on the assumption of homogeneity of exposure within municipalities – which is almost certain for the *Red Area A* population. The choice of using the population of the provinces of Vicenza, Verona, and Padova as reference could bias conservatively our results. However, a sensitivity analysis conducted excluding the exposed population from the reference gave similar results. In addition, all time period comparisons were done taking as reference the time periods before the relevant exposure happened. This internal analysis reassures in terms of comparability of exposed and unexposed, and the use of SMR guarantees that confounding by secular trend in the time evolution of mortality is controlled for.

Second, we could not adjust the association of PFAS exposure with the risk of cardiovascular disease for those conditions acting as mediators of the effect of PFAS, for example low-density cholesterol and hypertension. It must be noted that, otherwise, we would have eclipsed the effect of PFAS, which depends on mediating factors. It may be that this is an additional explanation for the frequent failures of the epidemiologic research on PFAS-associated cardiovascular disease.

Third, our observation did not start at the time of first exposure but approximately 15 years later because of limitations in availability of mortality data and, moreover, we considered the Red Area population as exposed, excluding those municipalities with groundwater contamination since 1966. People exposed earlier may have died before the start of the study and, if so, their death would not be documented. In particular, people most susceptible to the effects of exposure may have developed the disease earlier. These factors may have led to an underestimate of the risk.

And fourth, comparisons with other studies from the same area should be made with some caution, because of the possibility that the municipalities considered to represent the 'contaminated area' and the uncontaminated (or reference) area have been selected using data from different reports of regional authorities or have been defined according to criteria partly different from ours [79]. The selection of the uncontaminated area is particularly prone to arbitrary assumptions and between-studies variation, with a risk of misclassification of exposure. We took the reference municipalities within the boundaries of the three provinces involved. They probably had some, albeit low, degree of contamination with PFAS but they were much more similar to the contaminated municipalities for many potential confounders.

Future perspectives

Global concerns about the public health impact of PFAS are growing and the scientific, political and social attitudes towards the PFAS problem are evolving. The revision of the IARC classification of PFOA to "carcinogenic to humans" (Group 1) and PFOS to 'possibly carcinogenic to humans' (Group 2B) [28] will most likely boost this process. In the first place, the transition to the replacements of PFAS and the creation of comprehensive environmental monitoring programmes will become important topics in many agendas. The combination of regulative restrictions and pan-European biomonitoring programmes is considered the key strategy for PFAS control across the EU [27]. Increasing attention is also being paid to the creation of groundwater parks, that is, areas free of agricultural activities and nutritious sewage sludge.

Although effective strategies for removing PFAS do exist [8], research efforts on technologies and water treatment systems should continue [90]. PFAS treatment and remediation costs, too, have become a dominant topic of environmental policies and among regulators and utilities, and the pressure to find effective and economical solutions is increasing [91, 92].

The exploration of options for PFAS control plans is paralleled by research efforts and advancements on the mechanisms of carcinogenicity. An emerging view is that there are distinct but interdependent general pathways of PFAS action involving, in particular, metabolism, endocrine disruption and epigenetic perturbation [93]. These three pathways seem mutually enforcing and may combine to establish a pro-

tumorigenic environment. Also, these pathways are predicted to be dependent on the dose and the window of exposure during life. This might contribute to explain the difficulties in obtaining epidemiologic and experimental evidence linking PFAS and cancer. The relationship between prenatal and postnatal exposure to PFAS, inflammation status and cardiometabolic factors is another promising area of research [94].

As a final remark, concerning health surveillance programmes, our findings support the view that more consideration should be given to the psychological impact of environmental pollution, which is poorly recognized by the health authorities responsible for managing disasters [71].

Conclusions

For the first time, the association of PFAS with mortality from cardiovascular disease was formally demonstrated in the world's largest exposed population. Moreover, circumstantial evidence regarding kidney cancer and testicular cancer is consistent with previously reported data. Given the present results and the recent IARC revision, it is urged to have an immediate ban of PFAS production and to start implementing additional remediation activities in contaminated areas.

Declarations

Ethics approval and consent to participate

The study was approved by the Ethics Committee at the Romagna Cancer Institute (ID: IRST100.37).

Consent for publication

Not applicable.

Data availability

Research data are available from Giada Minelli (contact email: giada.minelli@iss.it) upon reasonable request.

Competing interests

The authors declare no competing interests.

Funding

This study was partially funded by the Veneto Regional Administration (DGR 1495/2019, DDR 30/2020, Resolution AULSS8 1402/2020) by committing a professional assignment to the Giulio A. Maccacaro Epidemiology & Prevention Society. The authors received no funding. The authors retained full control over the manuscript and full intellectual freedom to report and interpret the results.

Figure Legends

Fig. 1 Map of the concentrations (ng/l) of perfluorooctanoic acid (PFOA) (top panel A and B) and perfluorosulfonic acid (PFOS) (bottom panel C and D) in the shallow water (left panel A and C) and the groundwater (right panel B and D) of the Veneto Region municipalities. July 2013–June 2015

Fig. 2 Lexis diagram showing age classes, calendar period and highlighted in gray the analyzed birth cohorts

Fig. 3 Cumulative SMR (and 90% confidence band, grey area) for all-cause mortality by birth cohort. Males (a) and females (b). PFAS contaminated *Red Area*. Birth cohorts 1905-1984. (Reference value: red line)

Fig. 4 Cumulative SMR (and 90% confidence band, grey area) for malignant tumours mortality by birth cohort. Males (a) and females (b). PFAS contaminated *Red Area*. Birth cohorts 1905-1984. (Reference value: red line)

Fig. 5 Mortality for diseases of the circulatory system. Sex-specific SMR by calendar period (Khaki Females Red Males). Panel (a) *Red area*; (b) *Red Area A*. *Red Area* refers to the 30 Municipalities of Veneto Region connected to the PFAS contaminated water plant (aquifer), *Red Area A* refers to the 13 municipalities with also PFAS contamination of groundwater. 1980-2018

Fig. 6 Mortality for kidney tumours. Sex-specific SMR by calendar period (Khaki Females Red Males). Panel (a) *Red area*; (b) *Red area A*. *Red Area* refers to the 30 Municipalities of Veneto Region connected to the PFAS contaminated water plant (aquifer), *Red Area A* refers to the 13 municipalities with also PFAS contamination of groundwater. 1980-2018

References

1. Gaines LGT. Historical and current usage of per- and polyfluoroalkyl substances (PFAS): a literature review. *Am J Ind Med.* 2023;66:353-78. doi: 10.1002/ajim.23362.
2. Xiao F, Golovko SA, Golovko MY. Identification of novel non-ionic, cationic, zwitterionic, and anionic polyfluoroalkyl substances using UPLC-TOF-MSE high-resolution parent ion search. *Anal Chim Acta.* 2017;988:41-9. doi: 10.1016/j.aca.2017.08.016.
3. Manojkumar Y, Pilli S, Rao PV, Tyagi RD. Sources, occurrence and toxic effects of emerging per- and polyfluoroalkyl substances (PFAS). *Neurotoxicol Teratol.* 2023;97:107174. doi: 10.1016/j.ntt.2023.107174.
4. Zhang M, Zhao X, Zhao D, Soong TY, Tian S. Poly- and perfluoroalkyl substances (PFAS) in landfills: occurrence, transformation and treatment. *Waste Manag.* 2023;155:162-78. doi: 10.1016/j.wasman.2022.10.028.
5. National Institute of Environmental Health Sciences. Perfluoroalkyl and polyfluoroalkyl substances (PFAS). 2023. <https://www.niehs.nih.gov/health/topics/agents/pfc/index.cfm>.
6. Li X, Fatow M, Cui D, Quinete N. Assessment of per- and polyfluoroalkyl substances in Biscayne Bay surface waters and tap waters from South Florida. *Sci Total Environ.* 2022;806 Pt 1:150393. doi: 10.1016/j.scitotenv.2021.150393.
7. Zhang W, Liang Y. Performance of different sorbents toward stabilizing per- and polyfluoroalkyl substances (PFAS) in soil. *Environ Adv.* 2022;8:100217.
8. Ehsan MN, Riza M, Pervez MN, Khyum MMO, Liang Y, Naddeo V. Environmental and health impacts of PFAS: sources, distribution and sustainable management in North Carolina (USA). *Sci Total Environ.* 2023;878:163123. doi: 10.1016/j.scitotenv.2023.163123.
9. Prevedouros K, Cousins IT, Buck RC, Korzeniowski SH. Sources, fate and transport of perfluorocarboxylates. *Environ Sci Technol.* 2006;40:32-44. doi: 10.1021/es0512475.
10. Davis KL, Aucoin MD, Larsen BS, Kaiser MA, Hartten AS. Transport of ammonium perfluorooctanoate in environmental media near a fluoropolymer manufacturing facility. *Chemosphere.* 2007;67:2011-9. doi: 10.1016/j.chemosphere.2006.11.049.
11. Boulanger B, Vargo JD, Schnoor JL, Hornbuckle KC. Evaluation of perfluorooctane surfactants in a wastewater treatment system and in a commercial surface protection product. *Environ Sci Technol.* 2005;39:5524-30. doi: 10.1021/es050213u.

12. Schultz MM, Barofsky DF, Field JA. Quantitative determination of fluorinated alkyl substances by large-volume-injection liquid chromatography tandem mass spectrometry: characterization of municipal wastewaters. *Environ Sci Technol*. 2006;40:289-95. doi: 10.1021/es051381p.
13. Valsecchi S, Rusconi M, Mazzoni M, Viviano G, Pagnotta R, Zaghi C, et al. Occurrence and sources of perfluoroalkyl acids in Italian river basins. *Chemosphere*. 2015;129:126-34. doi: 10.1016/j.chemosphere.2014.07.044.
14. Lei X, Lian Q, Zhang X, Karsili TK, Holmes W, Chen Y, et al. A review of PFAS adsorption from aqueous solutions: Current approaches, engineering applications, challenges, and opportunities. *Environ Pollut*. 2023;321:121138. doi: 10.1016/j.envpol.2023.121138.
15. Šabović I, Cosci I, De Toni L, Ferramosca A, Stornaiuolo M, Di Nisio A, et al. Perfluoro-octanoic acid impairs sperm motility through the alteration of plasma membrane. *J Endocrinol Invest*. 2020;43(5):641-52. doi: 10.1007/s40618-019-01152-0.
16. Fenton SE, Ducatman A, Boobis A, DeWitt JC, Lau C, Ng C, et al. Per- and polyfluoroalkyl substance toxicity and human health review: current state of knowledge and strategies for informing future research. *Environ Toxicol Chem*. 2021;40:606-30. doi: 10.1002/etc.4890.
17. Gaballah S, Swank A, Sobus JR, Howey XM, Schmid J, Catron T, et al. Evaluation of developmental toxicity, developmental neurotoxicity, and tissue dose in zebrafish exposed to GenX and other PFAS. *Environ Health Perspect*. 2020;128:47005. doi: 10.1289/EHP5843.
18. Di Nisio A, De Rocco Ponce M, Giadone A, Rocca MS, Guidolin D, Foresta C. Perfluoroalkyl substances and bone health in young men: a pilot study. *Endocrine*. 2020;67:678684. doi: 10.1007/s12020-019-02096-4.
19. Crawford L, Halperin SA, Dzierlenga MW, Skidmore B, Linakis MW, Nakagawa S, et al. Systematic review and meta-analysis of epidemiologic data on vaccine response in relation to exposure to five principal perfluoroalkyl substances. *Environ Int*. 2023;172:107734. doi: 10.1016/j.envint.2023.107734.
20. von Holst H, Nayak P, Dembek Z, Buehler S, Echeverria D, Fallacara D, et al. Perfluoroalkyl substances exposure and immunity, allergic response, infection, and asthma in children: review of epidemiologic studies. *Heliyon*. 2021;7:e08160. doi: 10.1016/j.heliyon.2021.e08160.
21. Ojo AF, Peng C, Ng JC. Combined effects and toxicological interactions of perfluoroalkyl and polyfluoroalkyl substances mixtures in human liver cells (HepG2). *Environ Pollut*. 2020;263 Pt B:114182. doi: 10.1016/j.envpol.2020.114182.
22. Nelson JW, Hatch EE, Webster TF. Exposure to polyfluoroalkyl chemicals and cholesterol, body weight, and insulin resistance in the general U.S. population. *Environ Health Perspect*. 2010;118:197-202. doi: 10.1289/ehp.0901165.
23. Winquist A, Steenland K. Perfluorooctanoic acid exposure and thyroid disease in community and worker cohorts. *Epidemiology*. 2014;25:255-64. doi: 10.1097/EDE.0000000000000040.
24. Cardenas A, Gold DR, Hauser R, Kleinman KP, Hivert MF, Calafat AM, et al. Plasma concentrations of per- and polyfluoroalkyl substances at baseline and associations with glycemic indicators and diabetes incidence among high-risk adults in the Diabetes Prevention Program Trial. *Environ Health Perspect*. 2017;125:107001. doi: 10.1289/EHP1612.
25. Zhang C, Sundaram R, Maisog J, Calafat AM, Barr DB, Buck Louis GM. A prospective study of prepregnancy serum concentrations of perfluorochemicals and the risk of gestational diabetes. *Fertil Steril*. 2015;103:184-9. doi: 10.1016/j.fertnstert.2014.10.001.
26. Darrow LA, Stein CR, Steenland K. Serum perfluorooctanoic acid and perfluorooctane sulfonate concentrations in relation to birth outcomes in the Mid-Ohio Valley, 2005-2010. *Environ Health Perspect*. 2013;121:1207-13. doi: 10.1289/ehp.1206372.
27. Sonne C, Jenssen BM, Rinklebe J, Lam SS, Hansen M, Bossi R, et al. EU need to protect its environment from toxic per- and polyfluoroalkyl substances. *Sci Total Environ*. 2023;876:162770. doi: 10.1016/j.scitotenv.2023.162770.
28. Zahm S, Bonde JP, Chiu WA, Hoppin J, Kanno J, Abdallah M, Blystone CR, Calkins MM, Dong GH, Dorman DC, Fry R, Guo H, Haug LS, Hofmann JN, Iwasaki M, Machala M, Mancini FR, Maria-Engler SS, Møller P, Ng JC, Pallardy M, Post GB, Salihovic S, Schlezinger J, Soshilov A, Steenland K, Steffensen IL, Tryndyak V, White A, Woskie S, Fletcher T, Ahmadi A, Ahmadi N, Benbrahim-Tallaa L,

- Bijoux W, Chittiboyina S, de Conti A, Facchin C, Madia F, Mattock H, Merdas M, Pasqual E, Suonio E, Viegas S, Zupunski L, Wedekind R, Schubauer-Berigan MK. Carcinogenicity of perfluorooctanoic acid and perfluorooctanesulfonic acid. *Lancet Oncol.* 2023 Nov 30:S1470-2045(23)00622-8. doi: 10.1016/S1470-2045(23)00622-8.
29. Steenland K, Winquist A. PFAS and cancer, a scoping review of the epidemiologic evidence. *Environ Res.* 2021;194:110690. doi: 10.1016/j.envres.2020.110690.
 30. Leonard RC, Kreckmann KH, Sakr CJ, Symons JM. Retrospective cohort mortality study of workers in a polymer production plant including a reference population of regional workers. *Ann Epidemiol.* 2008;18:15-22. doi: 10.1016/j.annepidem.2007.06.011.
 31. Steenland K, Woskie S. Cohort mortality study of workers exposed to perfluorooctanoic acid. *Am J Epidemiol.* 2012;176:909-17. doi: 10.1093/aje/kws171.
 32. Vieira VM, Hoffman K, Shin HM, Weinberg JM, Webster TF, Fletcher T. Perfluorooctanoic acid exposure and cancer outcomes in a contaminated community: a geographic analysis. *Environ Health Perspect.* 2013;121:318-23. doi: 10.1289/ehp.1205829.
 33. C8 Science Panel. 2012. http://www.c8sciencepanel.org/prob_link.html.
 34. Pitter G, Da Re F, Canova C, Barbieri G, Zare Jeddi M, Daprà F, et al. Serum levels of perfluoroalkyl substances (PFAS) in adolescents and young adults exposed to contaminated drinking water in the Veneto Region, Italy: a cross-sectional study based on a health surveillance program. *Environ Health Perspect.* 2020;128:27007. doi: 10.1289/EHP5337.
 35. Zaghi C, Serrini G. Il progetto di ricerca per la valutazione del rischio ambientale e sanitario associato alla contaminazione da sostanze perfluoroalchiliche (PFAS) nei principali bacini fluviali italiani. https://www.mase.gov.it/sites/default/files/archivio/allegati/reach/Zaghi_PFAS.pdf.
 36. Polesello S, Pagnotta R, Marziali L, Patrolecco L, Rusconi M, Stefani F, Valsecchi S. Realizzazione di uno studio di valutazione del rischio ambientale e sanitario associato alla contaminazione da sostanze perfluoro-alchiliche (PFAS) nel Bacino del Po e nei principali bacini fluviali italiani. https://www.mase.gov.it/sites/default/files/archivio/allegati/reach/progettoPFAS_ottobre2013.pdf
 37. Regione del Veneto. PFAS. Popolazione esposta. <https://www.regione.veneto.it/web/sanita/pfas-popolazione-esposta>.
 38. Polesello S, Valsecchi S. Rischio associate alla presenza di sostanze perfluoro-alchiliche (PFAS) nelle acque potabili e nei corpi idrici di aree industriali nella Provincia diu Vicenza e aree limitrofe. IRSA—CNR, 2013. <https://sian.aulss9.veneto.it/index.cfm?action=mys.apridoc&iddoc=803>
 39. Girardi P, Merler E. A mortality study on male subjects exposed to polyfluoroalkyl acids with high internal dose of perfluorooctanoic acid. *Environ Res.* 2019;179 Pt A:108743. doi: 10.1016/j.envres.2019.108743.
 40. Istituto Nazionale di Statistica. Demo Istat. <https://demo.istat.it/>.
 41. Regione del Veneto. Aree_impatto_2018_v03.pdf. <https://rdv.app.box.com/s/0agk48tvcxdis53m6ud9ccjfwbnbbdgyi>.
 42. PFAS.LAND. Il GIS di PFAS.LAND. La prima mappa digitale navigabile sui PFAS. 2019. <https://pfas.land/2019/04/10/12-aprile-2019-il-gis-di-pfas-land-la-prima-mappa-digitale-navigabile-sui-pfas-uno-straordinario-strumento-popolare-per-capire-quanto-siamo-inquinati-attingendo-ai-dati-dellarpav/>.
 43. Agenzia Regionale per la Prevenzione e Protezione Ambientale del Veneto. Stima dei tempi di propagazione dell'inquinamento da sostanze perfluoroalchiliche (PFAS) nelle acque sotterranee in provincia di Vicenza, Padova e Verona. https://www.arpa.veneto.it/arpav/chi-e-arpav/file-e-allegati/pfas/nt_0516_stima_tempi_propagazione_pfas_nella_acque_sotterranee_v04.pdf/@@display-file/file
 44. Istituto Superiore di Sanità. Contaminazione da sostanze perfluoroalchiliche in Veneto. Valutazione dell'esposizione alimentare e caratterizzazione del rischio. https://www.sivempveneto.it/wp-content/uploads/2019/07/Relazione-PFAS_ISS-2019_finale.pdf.
 45. Zamboni M, Fin G, Scatton N, Facciolo L, Stoppa G, Catelan D, et al. Perfluoroalchilic food contamination in the PFAS high-risk area of the Veneto Region (Northern Italy). *Epidemiol Prev.* 2021;45:387-94. doi: 10.19191/EP21.5.P387.105.

46. Ingelido AM, Abballe A, Gemma S, Dellatte E, Iacovella N, De Angelis G, et al. Biomonitoring of perfluorinated compounds in adults exposed to contaminated drinking water in the Veneto Region, Italy. *Environ Int.* 2018;110:149-59. doi: 10.1016/j.envint.2017.10.026.
47. Regione del Veneto. Piano di sorveglianza sanitaria sulla popolazione esposta a PFAS. Rapporto n. 17. Maggio 2023. 2023.
<https://www.regione.veneto.it/documents/10793/12935055/Bollettino+PFAS+n.+17+-+maggio+2023.pdf/95cd8c4c-8790-4725-b5b0-f3cd089b51cc>.
48. Charles Perrow. Normal accidents: living with high risk technologies. Updated edition. Princeton (NJ), Princeton University Press, 1999.
49. Mazzanti M, Montini A. , 2006. The determinants of residential water demand: empirical evidence for a panel of Italian municipalities. *Applied Economics Letters*, 2006;13(2), 107-111.
<https://doi.org/10.1080/13504850500390788>
50. Romano G, Salvati N, Guerrini, A. Estimating the determinants of residential water demand in Italy. *Water*. 2014, 6, 2929-2945. <https://doi.org/10.3390/w6102929>
51. Powell-Wiley TM, Baumer Y, Baah FO, Baez AS, Farmer N, Mahlobo CT, Pita MA, Potharaju KA, Tamura K, Wallen GR. Social determinants of cardiovascular disease. *Circ Res.* 2022;130(5):782-799. doi: 10.1161/CIRCRESAHA.121.319811.
52. World Health Organization. International Classification of Diseases, 9th Revision. Geneva: World Health Organization; 1978.
53. World Health Organization. International Statistical Classification of Diseases and Related Health Problems, 10th Revision. Vol 1. 5th ed. Geneva: World Health Organization; 2016.
54. Clayton D, Schifflers E. Models for temporal variation in cancer rates. I: age-period and age-cohort models. *Stat Med.* 1987; 6: 449-467.
55. Clayton D, Schifflers E. Models for temporal variation in cancer rates. II: age-period-cohort models. *Stat Med.* 1987; 6: 469-481.
56. Oehlert GW. A note on the delta method. *American Statistician.* 1992;46:27-29. doi: 10.1080/00031305.1992.10475842
57. Breslow NE, Day NE. Statistical methods in cancer research. Volume II-the design and analysis of cohort studies. IARC Sci Publ (82) (1987), pp. 1-406
58. Bray F, Richiardi L, Ekbom A, Pukkala E, Cuninkova M, Møller H. Trends in testicular cancer incidence and mortality in 22 European countries: continuing increases in incidence and declines in mortality. *Int J Cancer.* 2006;118:3099-111. doi: 10.1002/ijc.21747.
59. Berg V, Nøst TH, Huber S, Rylander C, Hansen S, Veyhe AS, Fuskevåg OM, Odland JØ, Sandanger TM. Maternal serum concentrations of per- and polyfluoroalkyl substances and their predictors in years with reduced production and use. *Environ Int.* 2014 Aug;69:58-66. doi: 10.1016/j.envint.2014.04.010.
60. Hall SM, Zhang S, Hoffman K, Miranda ML, Stapleton HM. Concentrations of per- and polyfluoroalkyl substances (PFAS) in human placental tissues and associations with birth outcomes. *Chemosphere.* 2022 May;295:133873. doi: 10.1016/j.chemosphere.2022.133873.
61. van Beijsterveldt IALP, van Zelst BD, van den Berg SAA, de Fluiter KS, van der Steen M, Hokken-Koelega ACS. Longitudinal poly- and perfluoroalkyl substances (PFAS) levels in Dutch infants. *Environ Int.* 2022 Feb;160:107068. doi: 10.1016/j.envint.2021.107068. Epub 2021 Dec 27.
62. EFSA Panel on Contaminants in the Food Chain (EFSA CONTAM Panel). Risk to human health related to the presence of perfluoroalkyl substances in food. *EFSA J.* 2020;18:e06223. doi: 10.2903/j.efsa.2020.6223.
63. Fitz-Simon N, Fletcher T, Luster MI, Steenland K, Calafat AM, Kato K, et al. Reductions in serum lipids with a 4-year decline in serum perfluorooctanoic acid and perfluorooctanesulfonic acid. *Epidemiology.* 2013;24:569-76. doi: 10.1097/EDE.0b013e31829443ee.
64. Canova C, Barbieri G, Zare Jeddi M, Gion M, Fabricio A, Daprà F, et al. Associations between perfluoroalkyl substances and lipid profile in a highly exposed young adult population in the Veneto Region. *Environ Int.* 2020;145:106117. doi: 10.1016/j.envint.2020.106117.

65. Canova C, Di Nisio A, Barbieri G, Russo F, Fletcher T, Batzella E, et al. PFAS Concentrations and cardiometabolic traits in highly exposed children and adolescents. *Int J Environ Res Public Health*. 2021;18:12881. doi: 10.3390/ijerph182412881.
66. Zare Jeddi M, Dalla Zuanna T, Barbieri G, Fabricio ASC, Daprà F, Fletcher T, et al. Associations of perfluoroalkyl substances with prevalence of metabolic syndrome in highly exposed young adult community residents: a cross-sectional study in Veneto Region, Italy. *Int J Environ Res Public Health*. 2021;18:1194. doi: 10.3390/ijerph18031194.
67. Bertazzi PA, Bernucci I, Brambilla G, Consonni D, Pesatori AC. The Seveso studies on early and long-term effects of dioxin exposure: a review. *Environ Health Perspect*. 1998;106 Suppl 2:625-33. doi: 10.1289/ehp.98106625.
68. Sullivan D, Schmitt HJ, Calloway EE, Clausen W, Tucker P, Rayman J, et al. Chronic environmental contamination: a narrative review of psychosocial health consequences, risk factors, and pathways to community resilience. *Soc Sci Med*. 2021;276:113877. doi: 10.1016/j.socscimed.2021.113877.
69. Zamperini A. Ambiente e violenza. In: Zamperini A, Menegatto M. *Cattive acque. Contaminazione ambientale e comunità violate*. Padova: Padova University Press; 2021. P. 21-52.
70. Girardi P, Lupo A, Mastromatteo LY, Scrimin S. Behavioral outcomes and exposure to perfluoroalkyl substances among children aged 6-13 years: the TEDDY child study. *Environ Res*. 2023;231 Pt 2:116049. doi: 10.1016/j.envres.2023.116049.
71. Menegatto M, Lezzi S, Musolino M, Zamperini A. The psychological impact of per- and poly-fluoroalkyl substances (PFAS) pollution in the Veneto Region, Italy: a qualitative study with parents. *Int J Environ Res Public Health*. 2022;19:14761. doi: 10.3390/ijerph192214761.
72. Hastrup JL, Thomas SN, Edelstein M. Fear of cancer in a rural Appalachian community following notification of an environmental hazard. In: Edelstein MR, Tysiachniouk M, Smirnova LV, editors. *Cultures of contamination (research in social problems and public policy)*. Bingley, UK: Emerald Group Publishing Limited; 2007. p. 93–115.
73. O'Donnell CJ, Schwartz Longacre L, Cohen BE, Fayad ZA, Gillespie CF, Liberzon I, et al. Posttraumatic stress disorder and cardiovascular disease: state of the science, knowledge gaps, and research opportunities. *JAMA Cardiol*. 2021;6:1207-16. doi: 10.1001/jamacardio.2021.2530.
74. Gray JD, Kogan JF, Marrocco J, McEwen BS. Genomic and epigenomic mechanisms of glucocorticoids in the brain. *Nat Rev Endocrinol*. 2017;13:661-73. doi: 10.1038/nrendo.2017.97.
75. Guidi J, Lucente M, Sonino N, Fava GA. Allostatic load and its Impact on health: a systematic review. *Psychother Psychosom*. 2021;90:11-27. doi: 10.1159/000510696.
76. Gee GC, Payne-Sturges DC. Environmental health disparities: a framework integrating psychosocial and environmental concepts. *Environ Health Perspect*. 2004;112:1645-53. doi: 10.1289/ehp.7074.
77. Steenland K, Fletcher T, Stein CR, Bartell SM, Darrow L, Lopez-Espinosa MJ, et al. Review: evolution of evidence on PFOA and health following the assessments of the C8 Science Panel. *Environ Int*. 2020;145:106125. doi: 10.1016/j.envint.2020.106125.
78. Winquist A, Steenland K. Modeled PFOA exposure and coronary artery disease, hypertension, and high cholesterol in community and worker cohorts. *Environ Health Perspect*. 2014 Dec;122(12):1299-305. doi: 10.1289/ehp.1307943.
79. Mastrantonio M, Bai E, Uccelli R, Cordiano V, Screpanti A, Crosignani P. Drinking water contamination from perfluoroalkyl substances (PFAS): an ecological mortality study in the Veneto Region, Italy. *Eur J Public Health*. 2018;28:180-5. doi: 10.1093/eurpub/ckx066.
80. Raleigh KK, Alexander BH, Olsen GW, Ramachandran G, Morey SZ, Church TR, et al. Mortality and cancer incidence in ammonium perfluorooctanoate production workers. *Occup Environ Med*. 2014;71:500-6. doi: 10.1136/oemed-2014-102109.
81. Shearer JJ, Callahan CL, Calafat AM, Huang WY, Jones RR, Sabbisetti VS, et al. Serum concentrations of per- and polyfluoroalkyl substances and risk of renal cell carcinoma. *J Natl Cancer Inst*. 2021;113:580-87. doi: 10.1093/jnci/djaa143.
82. National Institute of Environmental Health Sciences. NTP toxicology and carcinogenesis studies of tetrafluoroethylene (CAS No. 116-14-3) in F344/N rats and B6C3F1 mice (inhalation studies). National

- Toxicology Program technical report 450. Research Triangle Park, NC: National Institute of Environmental Health Sciences; 1997.
83. Barry V, Winquist A, Steenland K. Perfluorooctanoic acid (PFOA) exposures and incident cancers among adults living near a chemical plant. *Environ Health Perspect.* 2013;121:1313-8. doi: 10.1289/ehp.1306615.
 84. ATSDR. Toxicological profile for perfluoroalkyls. 2018. <https://monographs.iarc.fr/wp-content/uploads/2018/06/mono110-01.pdf>.
 85. Bartell SM, Vieira VM. Critical review on PFOA, kidney cancer, and testicular cancer. *J Air Waste Manag Assoc.* 2021;71:663-79. doi: 10.1080/10962247.2021.1909668.
 86. Chovanec M, Cheng L. Advances in diagnosis and treatment of testicular cancer. *BMJ.* 2022;379:e070499. doi: 10.1136/bmj-2022-070499.
 87. Batzella E, Girardi P, Russo F, Pitter G, Da Re F, Fletcher T, et al. Perfluoroalkyl substance mixtures and cardio-metabolic outcomes in highly exposed male workers in the Veneto Region: a mixture-based approach. *Environ Res.* 2022;212 Pt A:113225. doi: 10.1016/j.envres.2022.113225.
 88. Dalla Zuanna T, Savitz DA, Barbieri G, Pitter G, Zare Jeddi M, Daprà F, et al. The association between perfluoroalkyl substances and lipid profile in exposed pregnant women in the Veneto region, Italy. *Ecotoxicol Environ Saf.* 2021;209:111805. doi: 10.1016/j.ecoenv.2020.111805.
 89. De Toni L, Radu CM, Sabovic I, Di Nisio A, Dall'Acqua S, Guidolin D, et al. Increased cardiovascular risk associated with chemical sensitivity to perfluoro-octanoic acid: role of impaired platelet aggregation. *Int J Mol Sci.* 2020;21:399. doi: 10.3390/ijms21020399.
 90. Bertanza G, Capoferri GU, Carmagnani M, Icarelli F, Sorlini S, Pedrazzani R. Long-term investigation on the removal of perfluoroalkyl substances in a full-scale drinking water treatment plant in the Veneto Region, Italy. *Sci Total Environ.* 2020;734:139154. doi: 10.1016/j.scitotenv.2020.139154.
 91. Goldenman G, Fernandes M, Holland M, Tugran T, Nordin A, Schoumacher C, McNeill A. The cost of inaction. A socioeconomic analysis of environmental and health impacts linked to exposure to PFAS. Copenhagen, Nordisk Ministerråd, 2019.
 92. Treatment and funding options for removing PFAS from drinking water. 2023. <https://www.waterworld.com/drinking-water/treatment/article/14293065/treatment-and-funding-options-for-removing-pfas-from-drinking-water>.
 93. Boyd RI, Ahmad S, Singh R, Fazal Z, Prins GS, Madak Erdogan Z, et al. Toward a mechanistic understanding of poly- and perfluoroalkylated substances and cancer. *Cancers (Basel).* 2022;14:2919. doi: 10.3390/cancers14122919.
 94. Papadopoulou E, Stratakis N, Basagaña X, Brantsæter AL, Casas M, Fossati S, Gražulevičienė R, Småstuen Haug L, Heude B, Maitre L, McEachan RRC, Robinson O, Roumeliotaki T, Sabidó E, Borràs E, Urquiza J, Vafeiadi M, Zhao Y, Slama R, Wright J, Conti DV, Vrijheid M, Chatzi L. Prenatal and postnatal exposure to PFAS and cardiometabolic factors and inflammation status in children from six European cohorts. *Environ Int.* 2021 Dec;157:106853. doi: 10.1016/j.envint.2021.106853.

Table 1. Percentage of people with low scholarship, unemployment, house crowding, house tenure and single parent families in the three provinces of Vicenza, Verona and Padova and the 30 Municipalities of the PFAS contaminated Red Area.

Red zone	Low scholarship	Unemployment	House crowding	House tenure	Single parent families
No	30.41	5.90	2.21	11.17	9.59
Yes	32.63	6.14	2.07	11.21	9.97

Table 2. Summaries of fitting different age-period-cohort models to all-cause mortality data. Marginals likelihood ratio (LR), degrees of freedom (df). PFAS contaminated Red Area. 1980-2018.

	Men	Women
	All causes	All causes
	LR (df)	LR (df)
Age	147 (125)	131 (125)
+ drift	144 (124)	126 (124)
drift + cohort	94 (101)	105 (101)
drift + period	117 (118)	109 (118)
drift + cohort + period	87 (95)	95 (95)

Table 3. Observed and expected deaths of malignant tumours by sex and calendar periods. PFAS contaminated Red Area population 1980-2018.

Trend	Males		Females	
	Observed	Expected	Observed	Expected
1980-1989	2213	2243	1371	1452
1990-2009	4866	4866	3218	3375
2010-2018	2151	1981	1632	1656

Table 4. Summaries of fitting a poisson regression model on malignant tumours. PFAS contaminated Red Area population 1980-2018. IRR: mortality rate-ratio.

	IRR	pvalue	90% IC
Female vs. Male	0.92	<0.001	0.89-0.94
1980-89	reference		
1990-2009 vs 1980-1989	1.05	0.021	1.01-1.08
2010-2018 vs. 1980-1989	1.08	0.001	1.04-1.12

Table 5. Observed and expected deaths of kidney tumours by sex and calendar periods. PFAS contaminated Red Area population 1980-2018.

Trend	Males		Females	
	Observed	Expected	Observed	Expected
1980-1989	48	49	28	28
1990-2009	138	129	72	74
2010-2018	81	72	46	49

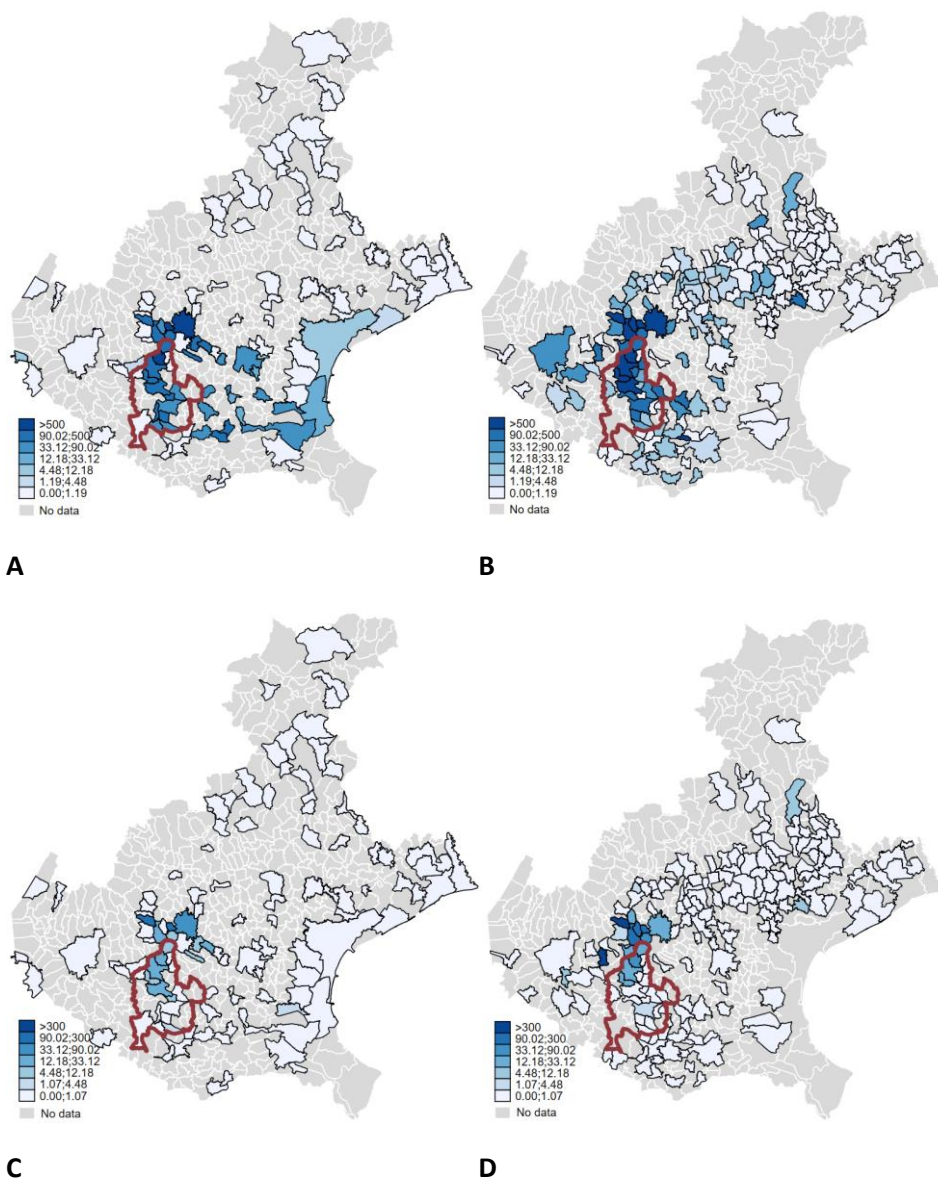


Figure 1. Map of the concentrations (ng/l) of perfluorooctanoic acid (PFOA) (top panel A and B) and perfluorosulfonic acid (PFOS) (bottom panel C and D) in the shallow water (left panel A and C) and the groundwater (right panel B and D) of the Veneto Region municipalities. July 2013–June 2015. Source Environmental Protection Agency Veneto Region (ARPAV)

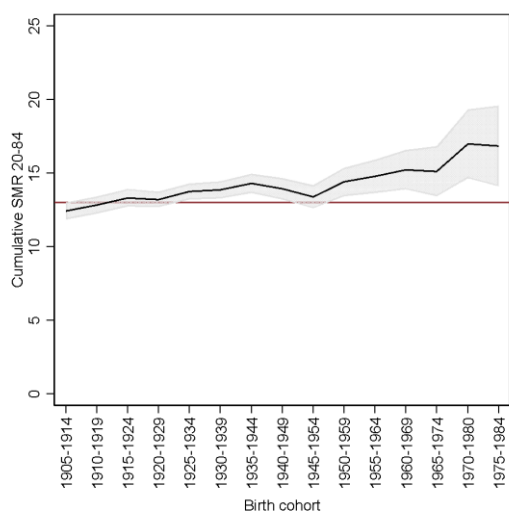
<https://www.arpa.veneto.it/dati-ambientali/open-data/idrosfera/concentrazione-di-sostanze-perfluoroalchiliche-pfas-nelle-acque-prelevate-da-arpav> accessed october 18th, 2023

Figure 2. Lexis diagram showing age classes, calendar period and highlighted in gray the analyzed birth cohorts

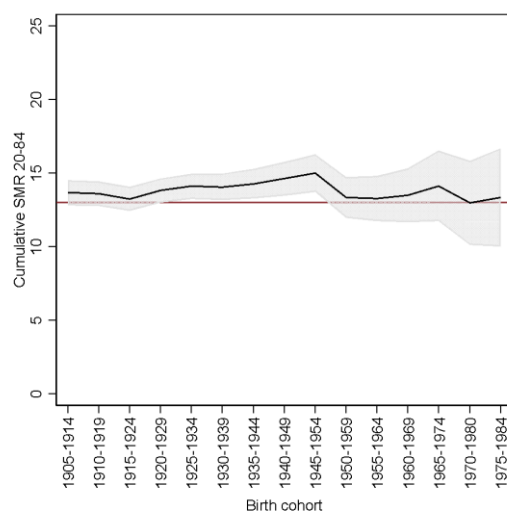
	period							
Age class	1980-1984	1985-1989	1990-1994	1995-1999	2000-2004	2005-2009	2010-2014	2015-2018
0-4	1975-1984	1980-1989	1985-1994	1990-1999	1995-2004	2000-2009	2005-2014	2010-2019
5-9	1970-1980	1975-1984	1980-1989	1985-1994	1990-1999	1995-2004	2000-2009	2005-2014
10-14	1965-1974	1970-1980	1975-1984	1980-1989	1985-1994	1990-1999	1995-2004	2000-2009
15-19	1960-1969	1965-1974	1970-1980	1975-1984	1980-1989	1985-1994	1990-1999	1995-2004
20-24	1955-1964	1960-1969	1965-1974	1970-1980	1975-1984	1980-1989	1985-1994	1990-1999
25-29	1950-1959	1955-1964	1960-1969	1965-1974	1970-1980	1975-1984	1980-1989	1985-1994
30-34	1945-1954	1950-1959	1955-1964	1960-1969	1965-1974	1970-1980	1975-1984	1980-1989
35-39	1940-1949	1945-1954	1950-1959	1955-1964	1960-1969	1965-1974	1970-1980	1975-1984
40-44	1935-1944	1940-1949	1945-1954	1950-1959	1955-1964	1960-1969	1965-1974	1970-1980
45-49	1930-1939	1935-1944	1940-1949	1945-1954	1950-1959	1955-1964	1960-1969	1965-1974
50-54	1925-1934	1930-1939	1935-1944	1940-1949	1945-1954	1950-1959	1955-1964	1960-1969
55-59	1920-1929	1925-1934	1930-1939	1935-1944	1940-1949	1945-1954	1950-1959	1955-1964
60-64	1915-1924	1920-1929	1925-1934	1930-1939	1935-1944	1940-1949	1945-1954	1950-1959
65-69	1910-1919	1915-1924	1920-1929	1925-1934	1930-1939	1935-1944	1940-1949	1945-1954
70-74	1905-1914	1910-1919	1915-1924	1920-1929	1925-1934	1930-1939	1935-1944	1940-1949

75-79	1900- 1909	1905- 1914	1910- 1919	1915- 1924	1920- 1929	1925- 1934	1930- 1939	1935- 1944
80-84	1895- 1904	1900- 1909	1905- 1914	1910- 1919	1915- 1924	1920- 1929	1925- 1934	1930- 1939
85+	1890- 1899	1895- 1904	1900- 1909	1905- 1914	1910- 1919	1915- 1924	1920- 1929	1925- 1934

Figure 3. Cumulative SMR (and 90% confidence band, grey area) for all-cause mortality by birth cohort. Males (a) and females (b). PFAS contaminated Red Area. Birth cohorts 1905-1984. (Reference value: red line)

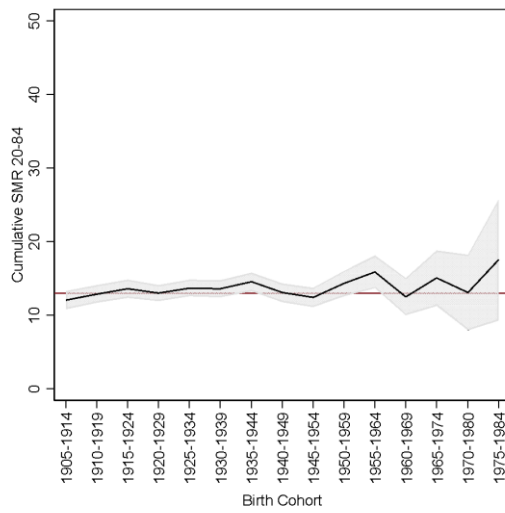


(a)

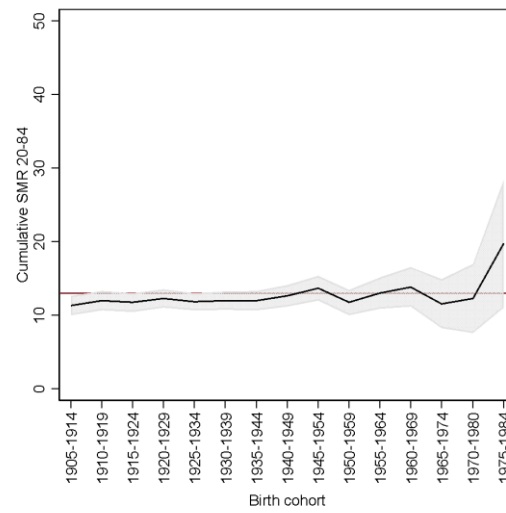


(b)

Figure 4. Cumulative SMR (and 90% confidence band, grey area) for malignant tumours mortality by birth cohort. Males (a) and females (b). PFAS contaminated Red Area. Birth cohorts 1905-1984. (Reference value: red line)

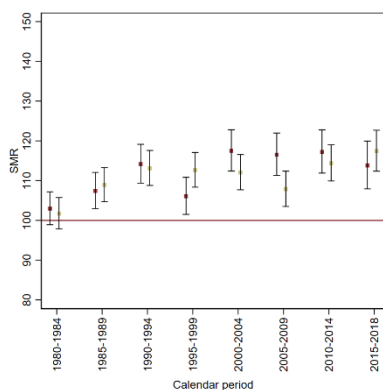


(a)

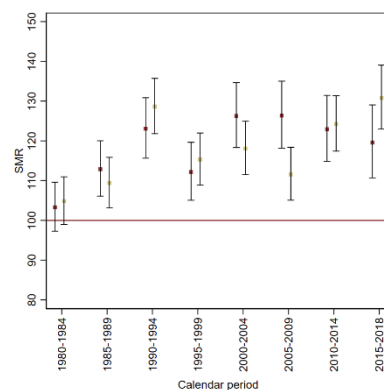


(b)

Figure 5: Mortality for diseases of the circulatory system. Sex-specific SMR by calendar period (Khaki Females Red Males). Panel (a) Red area; (b) Red Area A. Red Area refers to the 30 Municipalities of Veneto Region connected to the PFAS contaminated water plant (aquifer), Red Area A refers to the 13 municipalities with also PFAS contamination of groundwater. 1980-2018.

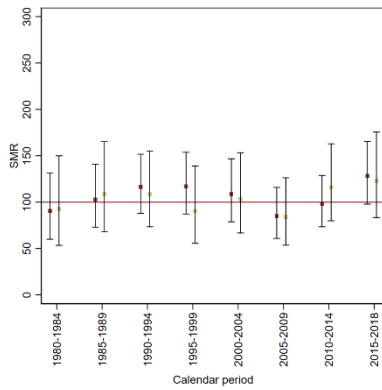


(a)

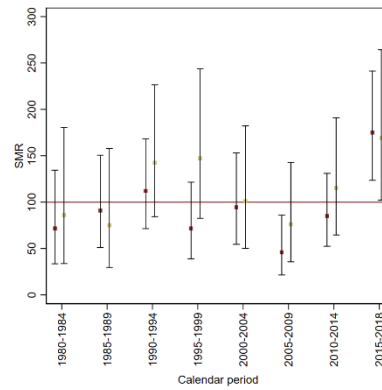


(b)

Figure 6: Mortality for kidney tumours. Sex-specific SMR by calendar period (Khaki Females Red Males). Panel (a) Red area; (b) Red area A. Red Area refers to the 30 Municipalities of Veneto Region connected to the PFAS contaminated water plant (aquifer), Red Area A refers to the 13 municipalities with also PFAS contamination of groundwater. 1980-2018.



(a)



(b)

Supplementary Table S1. Distribution of perfluorooctanic acid (PFOA) serum concentrations (ng/ml) by attained at first invitation and year of invitation. Veneto Region Health Surveillance.

In each cell of the table number of subjects, 5° percentile, mean (in bold), median, 95° percentile. When the number of subjects <50 the cell is left empty. P= <14 yrs old at invitation.

Source: Regione del Veneto. Piano di sorveglianza sanitaria sulla popolazione esposta a PFAS. Rapporto n. 19 Ottobre 2023.

Age class (years)	Year of invitation		
	2017-2018	2019-2020	2021-2023
58-72	0	3480	7263
	0	9.8	3.2
	0	111.3	81.9
	0	78.5	50.4
	0	309.8	265.3
45-61	1472	8443	1771
	9.1	3.6	3.1
	91.8	71.2	58.9
	64.7	41.1	34.3
	264.7	240.7	187
36-51	7042	4841	78
	3.6	2.3	1.2
	62	42.8	26.6
	33.7	22.1	12.9
	217.7	149	112.2
26-41	7783	847	100
	3.3	1.5	0.4
	60.5	31.4	20.8
	34.8	15.1	8.5
	203.3	118.7	93.8
15-31	8721	899	263
	7.2	2.5	0.8
	65.2	28.6	15.9
	50.6	20.1	9.8

	170.3	81.4	48.5
15-17	0	1848	0
	0	4.2	0
	0	28.7	0
	0	24.2	0
	0	67	0
14-18	0	96	1167
	0	2.2	1.6
	0	21.9	12.9
	0	19	9.9
	0	52	33
14-16	0	0	660
	0	0	1.7
	0	0	9.8
	0	0	7.9
	0	0	22.4
8-12 (P)	182	1713	0
	7.7	4.6	0
	30.7	26.8	0
	25.8	21.7	0
	69.1	64.4	0
8-13 (P)	0	873	552
	0	3.9	1.2
	0	23.6	7.8
	0	17.9	5.6
	0	64.2	23.6
8-11 (P)	0	0	746
	0	0	1.1
	0	0	7.8
	0	0	5
	0	0	22.5
7-9 (P)	0	0	257
	0	0	1.2

	0	0	8.2
	0	0	4.9
	0	0	24.4

Supplementary Table S2. Distribution of perfluorosulfonic acid (PFOS) serum concentrations (ng/ml) by attained at first invitation and year of invitation. Veneto Region Health Surveillance.

In each cell of the table number of subjects, 5° percentile, mean (in bold), median, 95° percentile. When number of subject <50 the cell is leave empty. P= <14 yrs old at invitation.

Source: Regione del Veneto. Piano di sorveglianza sanitaria sulla popolazione esposta a PFAS. [Rapporto n. 19 Ottobre 2023](#). ~~[Rapporto n. 17. Maggio 2023. 2023.](#)~~

Age class (years)	Year of invitation		
	2017-2018	2019-2020	2021-2023
58-72	0	3480	7263
	0	2	1.6
	0	6.2	6.6
	0	5.3	5.3
	0	13.1	15.3
45-61	1472	8443	1771
	1.6	1.4	1.4
	5.5	5.8	5.2
	4.7	4.6	4.1
	12	13.8	12.1
36-51	7042	4841	78
	1.2	1.3	0.7
	4.8	4.8	4.3
	3.8	3.7	3.5
	11	11.4	10.2
26-41	7783	847	100
	1.3	1.2	0.6
	4.7	3.8	3
	3.8	3	2.3
	10.5	9.3	7.6
15-31	8721	899	263
	1.5	1.1	0.6
	4.7	3.3	2.9
	3.8	2.7	2.5

	10.3	7.2	6.1
15-17	0	1848	0
	0	1.1	0
	0	2.9	0
	0	2.5	0
	0	6.2	0
14-18	0	96	1167
	0	1	0.7
	0	2.1	2.1
	0	1.8	1.8
	0	4.3	4.5
14-16	0	0	660
	0	0	0.7
	0	0	2.1
	0	0	1.7
	0	0	4.4
8-12 (P)	182	1713	0
	1.1	0.9	0
	3.3	2.4	0
	2.4	2	0
	5.4	4.9	0
8-13 (P)	0	873	552
	0	1.1	0.4
	0	2.8	1.6
	0	2.4	1.3
	0	5.6	3.7
8-11 (P)	0	0	746
	0	0	0.5
	0	0	1.7
	0	0	1.4
	0	0	4
7-9 (P)	0	0	257
	0	0	0.5

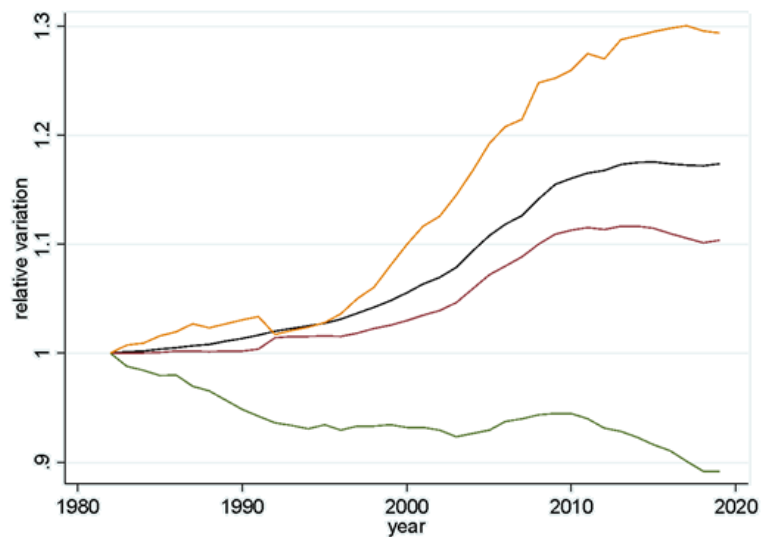
	0	0	1.6
	0	0	1.2
	0	0	4.2

Supplementary Table S3. Summary of the ICD9 and ICD10 version 2019 codes used in the study with details regarding the causes of death considered in the study.

ICD9	ICD10	Category	Details
001-999	A00-Z99.9	All causes	
140-208	C00-C97	Malignant neoplasms	All malignant neoplasms, including the categories analysed in detail in this analysis
155	C22	Malignant neoplasm of liver and intrahepatic bile ducts	Malignant neoplasm of liver and intrahepatic bile ducts, excluding gallbladder and extrahepatic bile ducts
155.0	C22.0, C22.2	Malignant neoplasm of liver	Malignant neoplasm of liver including liver cell carcinoma and hepatoblastoma
157	C25	Malignant neoplasm of pancreas	Malignant neoplasm of pancreas
162	C33-C34	Malignant neoplasm of trachea, bronchus and lung	Malignant neoplasm of trachea, bronchus and lung excluding pleura
174	C50	Malignant neoplasm of breast	Malignant neoplasms of female breast
182	C54	Malignant neoplasm of corpus uteri	Malignant neoplasm of corpus uteri
183	C56-C57	Malignant neoplasms of ovary and other and unspecified female genital organs	Malignant neoplasms of ovary and other and unspecified female genital organs. They include Fallopian tube, broad ligament, round ligament and parametrium.
186	C62	Malignant neoplasm of testis	Malignant neoplasm of testis. They include malignant tumor of undescended, descended and unspecified testis
189	C64-C66, C68	Malignant neoplasms of kidney and other and unspecified urinary organs	Malignant neoplasm of kidney, renal pelvis, ureter, urethra, paraurethral glands and contiguous or overlapping sites, excluding bladder
193	C73	Malignant neoplasm of thyroid gland	Malignant neoplasms of thyroid gland
200-208	C81-C96	Malignant neoplasms of lymphoid, haematopoietic and related tissue	All solid and non-solid malignant tumors of the lymphatic and hematopoietic tissue
250	E10-E14	Diabetes mellitus	Diabetes mellitus including acute problems (e.g. hypoglycaemic coma, ketoacidosis) and complications (renal or ophthalmic complications,

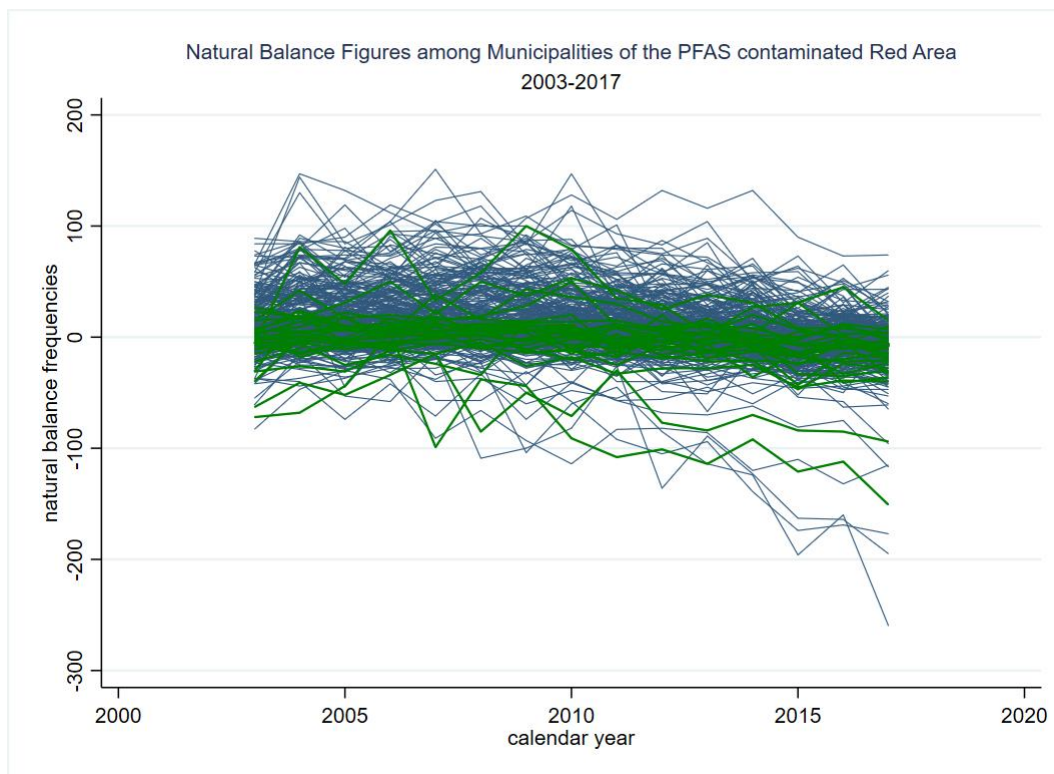
			neurological and peripheral circulatory complications)
390-459	I00-I99	Diseases of the circulatory system	Including the categories of heart disease described below, cerebrovascular disease, diseases of the arteries (atherosclerosis, aneurysms, embolisms and vasculitis), veins (thrombosis and embolisms) and lymphatic vessels
390-429	I00-I09, I11, I13, I20-I51	Heart diseases	Including rheumatic, hypertensive, and ischaemic heart diseases described below, pulmonary circulation diseases, pericardial, endocardial and myocardial disease, conduction disorders and heart failure
410-414	I20-I25	Ischaemic heart diseases	Ischaemic heart diseases
520-579	K00-K93	Diseases of the digestive system	Diseases of the digestive system

Supplementary Figure S1. Relative variation of population size (reference calendar year 1982). Three Provinces of Vicenza, Verona and Padova (black line), the 30 Municipalities of the PFAS contaminated Red Area (red line), the municipality of Lonigo (yellow line) and Montagnana (green line).



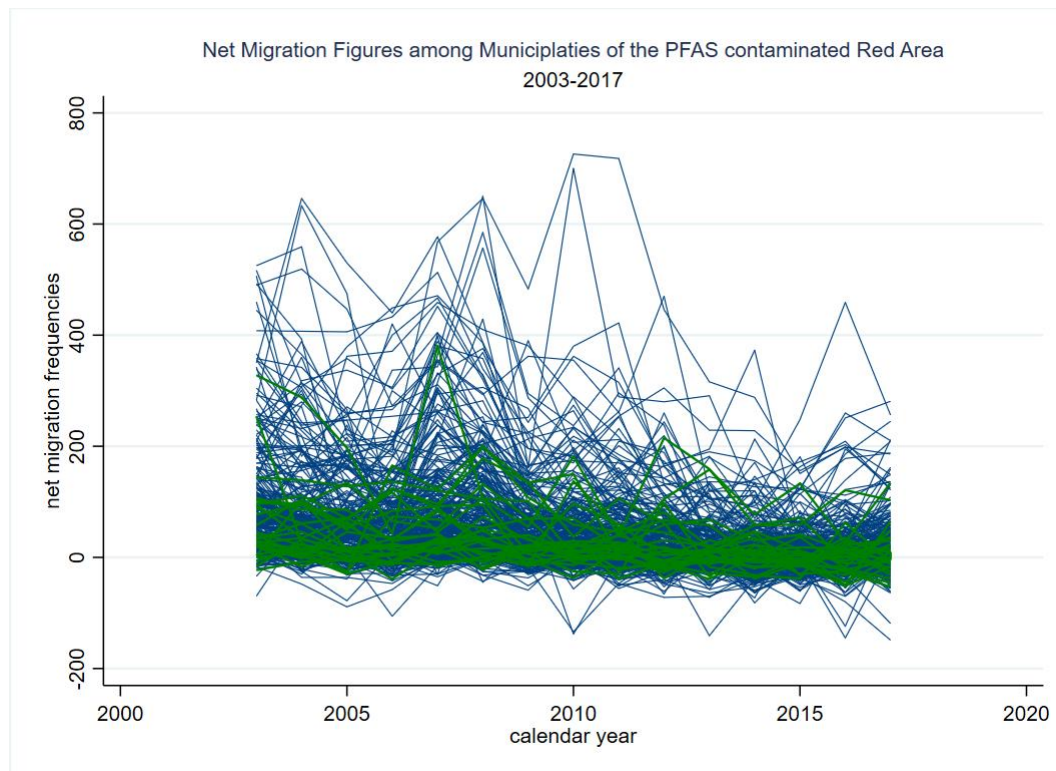
Supplementary Figure S2. Natural balance by calendar year for 321 municipalities of the Provinces of Vicenza, Verona and Padova. (Green lines: the 30 Municipalities of the PFAS contaminated Red Area). The capital cities were excluded. The municipalities of the Red Area with lowest natural balance were Legnago and Montagnana, the municipality with positive balance was Lonigo.

Source: demoistat



Supplementary Figure S3. Net migration by calendar year for 321 municipalities of the Provinces of Vicenza, Verona and Padova. (Green lines: the 30 Municipalities of the PFAS contaminated Red Area). The capital cities were excluded. The municipality of the Red Area with highest net migration was the municipality of Lonigo.

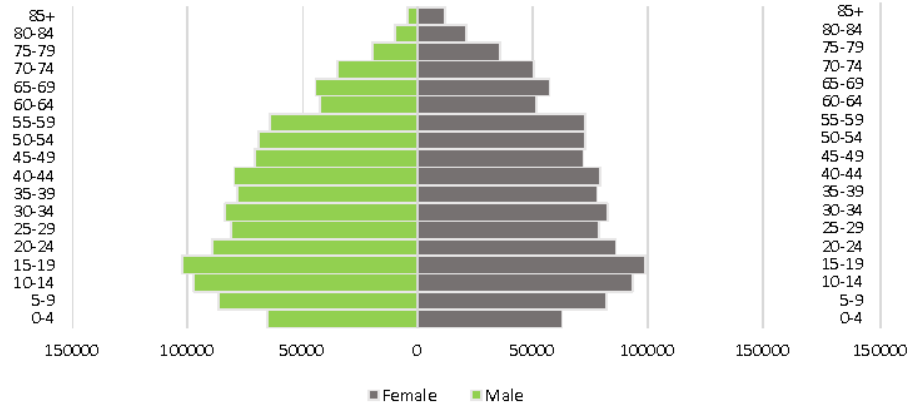
Source: demoistat



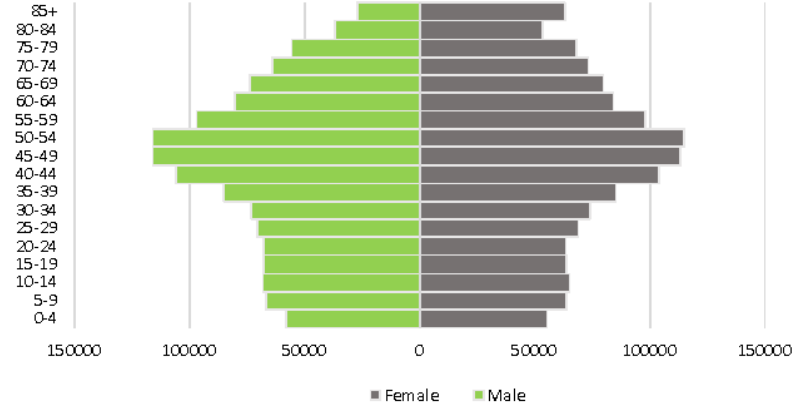
Supplementary Figure S4. Resident population age-sex pyramid of the Provinces of Vicenza, Verona and Padova (panel A and B) and the 30 Municipalities of the PFAS contaminated Red Area (panel C and D). 1st January 1982 (panel A and C) and 1st January 2018 (panel B and D).

Source: Italian National Institute of Statistics (ISTAT)

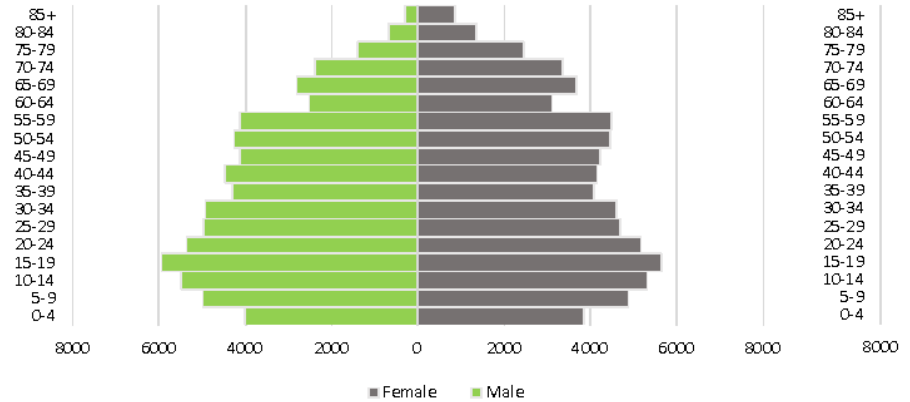
A



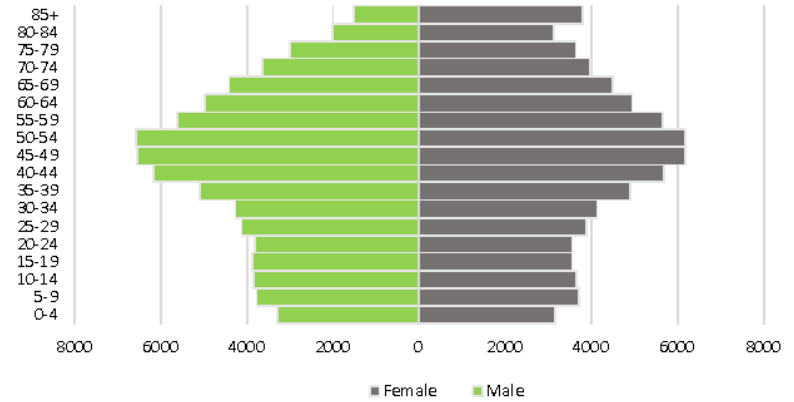
B



C

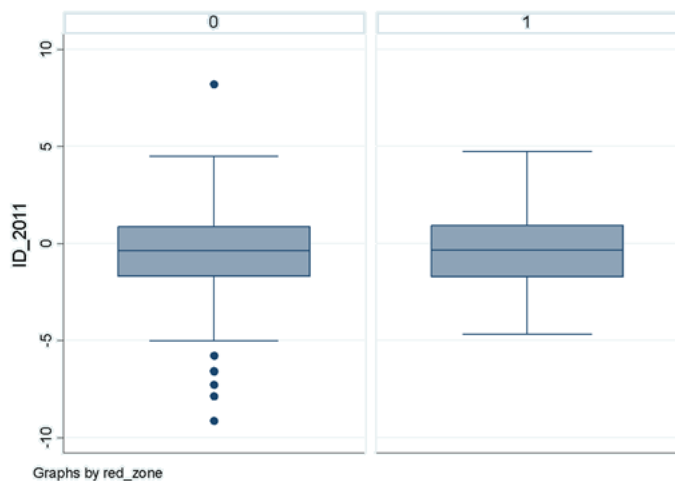


D



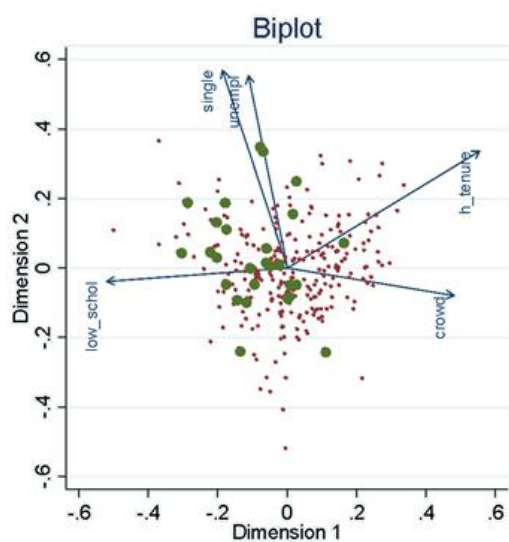
Supplementary Figure S5. Box and whiskers plots of material deprivation index at 2011 census for the three provinces of Vicenza, Verona and Padova, and for the 30 Municipalities of the PFAS contaminated Red Area.

Source: Rosano A, Pacelli B, Zengarini N, Costa G, Cislighi C, Caranci N. Aggiornamento e revisione dell'indice di deprivazione italiano 2011 a livello di sezione di censimento [Update and review of the 2011 Italian deprivation index calculated at the census section level]. *Epidemiol Prev.* 2020 Mar-Jun;44(2-3):162-170. Italian. doi: 10.19191/EP20.2-3.P162.039

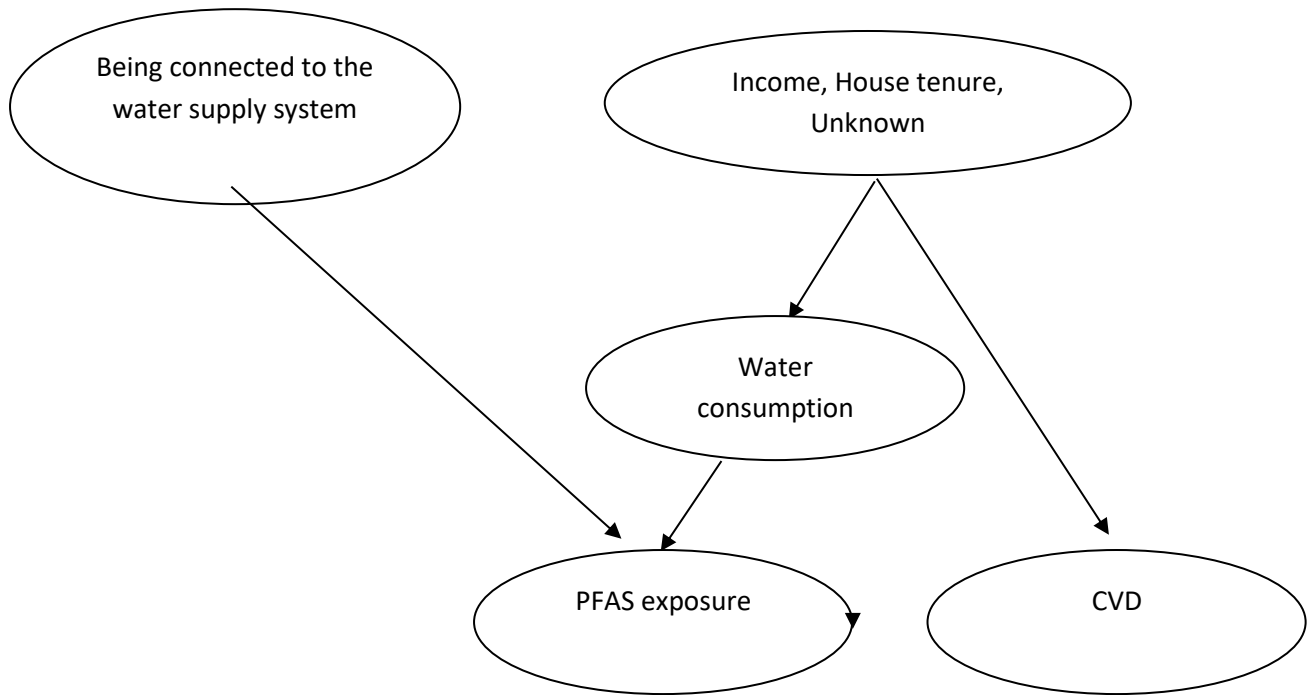


Supplementary Figure S6. Biplot of the first two principal components of five socio-demographics indicators (low scholarity, unemployment, house crowding, house tenure and single parenting). Points represent the 321 municipalities of the three provinces of Vicenza, Verona and Padova. In green the 30 Municipalities of the PFAS contaminated Red Area.

Source: Rosano A, Pacelli B, Zengarini N, Costa G, Cislighi C, Caranci N. Aggiornamento e revisione dell'indice di deprivazione italiano 2011 a livello di sezione di censimento [Update and review of the 2011 Italian deprivation index calculated at the census section level]. *Epidemiol Prev.* 2020 Mar-Jun;44(2-3):162-170. Italian. doi: 10.19191/EP20.2-3.P162.039



Supplementary Figure S7. Directed acyclic graph of the assumed causal model.



Supplementary Table S4. Observed deaths, directly standardized mortality rates (2013 European standard population) per 100,000, 0-59 and 60-85 cumulative mortality rates, attributable deaths and probability of 0 attributable deaths by causes of death, area, sex and calendar period. Red Area refers to the 30 Municipalities of Veneto Region connected to the PFAS contaminated water plant (aquifer), Red Area A refers to the 13 municipalities with also PFAS contamination of groundwater. 1980-2018. **See file “Supplementary Table S4.xlsx”**

Supplementary Table S5. Observed number of deaths, Standardized mortality ratios and 90% Confidence Interval (CI) by causes of death, area, sex and calendar period. Red Area refers to the 30 Municipalities of Veneto Region connected to the PFAS contaminated water plant (aquifer), Red Area A refers to the 13 municipalities with also PFAS contamination of groundwater. 1980-2018.

Category (ICD9)	Area	Sex	1980-1984		1985-1989		1990-1994		1995-1999		2000-2004		2005-2009		2010-2014		2015-2018		1980-2018		1985-2018	
			Obs	SMR(CI90 %)	Obs	SMR(CI90%)	Obs	SMR(CI90%)	Obs	SMR(CI90%)	Obs	SMR(CI90%)	Obs	SMR(CI90%)	Obs	SMR(CI90%)	Obs	SMR(CI90%)	Obs	SMR(CI90%)	Obs	SMR(CI90%)
All causes (001-999)	Red area	M	4037	104 (101 ,106)	3957	108(105 ,111)	3833	108(105 ,111)	3729	106(103 ,109)	3663	111(108 ,114)	3539	107(104 ,110)	3763	113(110 ,116)	3108	113(110 ,116)	29629	108(107,109)	25592	109(108,110)
		F	3489	104(101 ,107)	3546	106(103 ,109)	3580	106(103 ,109)	3652	106(103 ,109)	3627	104(102 ,107)	3719	105(102 ,108)	4211	110(107 ,113)	3694	113(110 ,116)	29518	107(106,108)	26029	107(106,108)
	Red area a	M	1839	105(101 ,109)	1808	110(105 ,114)	1781	113(108 ,117)	1717	111(107 ,116)	1641	112(107 ,117)	1603	109(105 ,114)	1732	114(109 ,118)	1459	116(111 ,121)	13580	111(109,112)	11741	112(110,114)
		F	1659	108(104 ,113)	1615	105(101 ,110)	1766	115(111 ,120)	1717	109(105 ,113)	1733	108(104 ,112)	1746	106(102 ,111)	2009	114(110 ,118)	1773	118(113 ,123)	14018	110(109,112)	12359	110(109,112)
Malignant neoplasms (140-208)	Red area	M	1075	100(96 ,106)	1238	106(101 ,111)	1265	106(101 ,111)	1223	107(102 ,112)	1220	109(104 ,114)	1158	101(96 ,106)	1221	109(104 ,114)	930	108(103 ,114)	9330	106(104,108)	8255	106(105,108)
		F	642	95(89 ,102)	729	94(89 ,100)	754	93(87 ,99)	784	95(89 ,101)	795	94(89 ,100)	885	99(94 ,105)	907	99(94 ,105)	725	98(92 ,104)	6221	96(94,98)	5579	96(94,98)
	Red area a	M	444	93(86 ,101)	517	99(92 ,107)	557	106(98 ,113)	540	107(99 ,115)	527	106(98 ,114)	475	93(86 ,100)	538	106(98 ,114)	426	108(100 ,117)	4024	102(99,105)	3580	103(101,106)
		F	287	95(86 ,104)	301	86(78 ,95)	353	96(88 ,105)	370	99(91 ,108)	371	96(88 ,105)	411	101(93 ,109)	411	98(90 ,106)	330	96(88 ,106)	2834	96(93,99)	2547	96(93,99)
Malignant neoplasm of liver and intrahepatic bile ducts (155)	Red area	M	58	123(98 ,153)	66	105(84 ,128)	83	105(87 ,127)	94	122(102 ,144)	86	110(91 ,132)	80	100(82 ,120)	93	116(97 ,137)	64	107(86 ,131)	624	110(103,118)	566	109(102,117)
		F	22	79(54 ,113)	37	120(89 ,158)	31	91(66 ,122)	43	113(86 ,146)	35	97(71 ,128)	42	117(89 ,152)	37	98(73 ,129)	27	99(70 ,137)	274	102(92,113)	252	105(94,117)
	Red area a	M	25	119(83 ,166)	29	104(74 ,141)	35	101(75 ,134)	38	112(84 ,147)	46	133(102 ,170)	42	117(89 ,151)	43	118(90 ,152)	26	94(66 ,131)	284	113(102,124)	259	112(101,124)
		F	6	48(21 ,94)	16	114(71 ,173)	15	97(60 ,150)	20	117(78 ,171)	18	109(71 ,162)	25	153(106 ,214)	12	70(40 ,113)	6	48(21 ,94)	118	97(83,113)	112	103(87,120)

Malignant neoplasm of liver (155.0)	Red area	M	37	122(92,161)	34	96(71,128)	53	98(77,123)	45	97(75,1225)	38	94(70,124)	34	100(74,133)	51	111(87,140)	29	117(84,159)	321	103(94,131)	284	101(91,111)
		F	13	82(48,130)	13	107(64,171)	17	96(61,144)	21	125(84,180)	12	81(47,132)	15	123(76,189)	13	95(56,152)	7	94(44,176)	111	100(85,118)	98	104(87,122)
	Red area a	M	16	120(75,182)	12	77(44,125)	26	109(76,151)	23	113(77,160)	19	105(69,154)	22	144(98,206)	24	114(79,160)	12	105(60,170)	154	111(97,126)	138	110(95,127)
		F	4	73(19,127)	4	73(25,167)	6	76(33,149)	13	173(102,275)	5	74(29,157)	8	144(72,260)	7	112(53,210)	1	28(1,136)	48	96(74,122)	44	103(79,132)
Malignant neoplasm of pancreas (157)	Red area	M	50	125(97,158)	52	108(84,136)	66	117(94,144)	57	105(83,131)	64	104(84,128)	66	103(83,126)	96	128(107,151)	63	102(82,125)	514	112(104,120)	464	110(102,119)
		F	27	81(57,112)	44	98(75,126)	39	73(55,96)	44	77(59,99)	64	95(76,117)	67	90(73,110)	84	105(87,126)	63	93(74,114)	432	90(83,98)	405	91(84,99)
	Red area a	M	21	118(79,170)	23	108(74,153)	28	113(80,155)	25	105(73,147)	30	109(72,137)	29	101(72,138)	45	132(101,169)	26	91(64,127)	227	110(98,123)	206	109(97,123)
		F	13	87(51,138)	13	64(38,101)	17	71(45,107)	14	54(71,133)	30	98(71,133)	31	91(71,133)	46	125(97,160)	28	89(63,122)	192	88(78,99)	179	88(78,99)
Malignant neoplasm of trachea, bronchus and lung (162)	Red area	M	339	98(90,108)	402	108(100,118)	461	123(114,133)	366	105(96,114)	359	111(101,121)	341	110(100,120)	304	110(100,121)	235	114(102,127)	2807	110(106,113)	2468	111(108,115)
		F	49	87(68,111)	49	76(59,96)	60	82(65,101)	68	79(64,96)	78	80(66,97)	105	101(85,118)	105	89(76,105)	93	98(82,116)	607	87(82,93)	558	87(81,94)
	Red area a	M	137	90(78,104)	167	102(89,116)	181	110(97,124)	165	107(94,122)	149	104(90,119)	125	90(77,105)	131	104(90,121)	96	101(85,120)	1151	101(96,106)	1014	103(98,108)
		F	25	99(69,138)	23	79(54,112)	24	73(50,102)	36	93(69,123)	30	68(49,92)	50	105(82,133)	50	93(72,117)	43	97(74,126)	281	89(80,98)	256	88(79,98)
Malignant neoplasm of breast (174)	Red area	F	141	112(100,125)	143	99(89,111)	146	96(86,108)	155	98(88,109)	110	76(67,86)	159	105(94,116)	153	102(91,113)	124	98(86,110)	1131	98(93,102)	990	96(91,102)
	Red area a	F	64	113(96,134)	62	96(81,113)	69	101(86,119)	80	112(96,130)	44	67(54,82)	74	106(91,124)	70	101(86,118)	69	117(99,137)	532	101(94,109)	468	99(92,107)
Malignant neoplasm of corpus uteri (182)	Red area	F	5	79(31,166)	6	108(47,213)	12	135(78,218)	6	78(34,153)	11	119(67,197)	7	76(36,142)	9	91(47,158)	10	116(63,197)	66	101(81,124)	61	103(82,128)
	Red area a	F	4	140(48,322)	3	120(32,309)	6	150(65,296)	2	57(10,181)	5	119(47,250)	4	95(32,216)	3	65(18,169)	2	50(9,157)	29	97(70,134)	25	93(64,129)
Malignant neoplasm	Red area	F	30	103(74,140)	40	101(76,131)	32	78(57,105)	42	114(87,147)	41	106(81,138)	38	97(73,127)	37	92(69,121)	41	119(90,154)	301	101(91,111)	271	100(91,111)

of ovary (183)	Red area a	F	11	85(48,140)	19	107(70,157)	11	60(34,99)	17	102(65,154)	20	114(76,166)	13	72(43,115)	18	97(63,144)	14	87(53,136)	123	91(78,105)	112	91(77,107)
Malignant neoplasm of testis (186)	Red area	M	<3	42(1.63,198)	6 140(61,275)						0						7	71(33,132)	6	80(35,157)		
	Red area a	M	<3	93(3.69,539)	5 256(101,539)						0						6	131(57,260)	5	144(56,302)		
Malignant neoplasm of kidney and other and unspecified urinary organs (189)	Red area	M	20	91(60,132)	28	103(73,141)	40	116(88,152)	37	117(87,154)	31	109(79,147)	29	85(61,116)	38	98(73,129)	43	128(98,165)	266	106(96,118)	246	108(97,120)
		F	12	93(53,150)	16	109(68,165)	22	109(74,155)	15	90(56,139)	18	103(67,153)	17	84(54,126)	24	116(80,163)	22	123(83,176)	146	104(90,119)	134	105(90,121)
	Red area a	M	7	72(34,134)	11	91(51,151)	17	112(71,168)	10	72(39,121)	12	94(54,153)	7	46(21,86)	15	85(52,131)	27	175(124,241)	106	95(80,111)	99	97(87,108)
		F	5	86(34,180)	5	75(30,158)	13	142(84,226)	11	147(83,244)	8	101(50,182)	7	76(36,143)	11	115(65,191)	14	169(102,264)	74	116(94,140)	69	119(96,145)
Malignant neoplasm of the thyroid gland (193)	Red area	M	3	107(29,276)	1	33(1,154)	2	84(15,265)	1	42(2,197)	4	159(54,363)	2	86(15,270)	1	31(1,146)	3	146(45,428)	17	83(53,124)	14	78(48,123)
		F	5	92(36,193)	7	120(56,226)	4	61(21,139)	4	76(26,174)	8	147(73,266)	2	48(8,152)	2	45(8,141)	3	80(22,208)	35	86(63,114)	30	85(91,111)
	Red area a	M	1	81(3,384)	1	74(3,348)	2	191(33,601)	1	94(4,447)	4	357(122,817)	1	96(4,452)	1	68(3,323)	1	120(5,569)	12	131(76,212)	11	139(78,230)
		F	2	81(14,255)	3	114(31,294)	3	101(27,262)	3	126(34,326)	3	121(33,313)	1	53(2,250)	0	0(0,113)	3	174(47,448)	18	97(63,144)	16	99(62,151)
Malignant neoplasms of lymphoid, haematopoietic and related tissue (200-208)	Red area	M	73	112(92,137)	72	101(82,123)	79	104(85,125)	88	106(88,127)	82	95(79,115)	83	87(72,104)	96	103(87,122)	83	101(84,121)	656	101(94,107)	583	99(93,106)
		F	50	95(74,121)	56	88(69,109)	79	105(86,126)	65	81(65,100)	85	101(83,120)	71	85(69,103)	74	84(69,102)	65	89(71,109)	545	91(84,97)	495	90(84,97)
	Red area a	M	33	113(83,152)	28	88(62,120)	35	103(76,137)	38	104(78,136)	40	105(79,136)	40	93(70,121)	42	99(76,129)	33	88(64,117)	289	99(89,109)	256	97(87,108)
		F	20	85(56,123)	22	76(51,108)	36	106(79,140)	30	83(60,113)	35	91(67,120)	40	105(79,136)	33	81(60,109)	34	100(74,133)	250	91(82,101)	230	92(82,102)
Diabetes mellitus (250)	Red area	M	67	91(73,111)	73	101(82,123)	52	75(59,94)	72	103(84,125)	57	79(63,99)	77	94(77,113)	96	104(88,124)	100	121(102,143)	594	97(90,104)	527	97(91,105)
		F	130	89(77,103)	168	113(99,129)	113	88(75,103)	112	99(84,116)	119	108(92,126)	136	115(99,132)	149	125(108,143)	122	127(108,147)	1049	107(102,113)	919	110(104,116)
	Red area a	M	27	82(58,113)	38	117(88,154)	28	91(65,125)	23	75(51,106)	28	88(63,121)	32	88(64,118)	52	125(98,158)	51	135(105,170)	279	102(92,112)	252	104(94,116)

		F	69	104(84,127)	76	112(91,135)	52	89(69,112)	47	91(70,116)	51	100(78,127)	57	104(83,130)	69	125(101,152)	48	108(84,138)	469	104(96,113)	400	104(96,113)
Diseases of the circulatory system (390-459)	Red area	M	1706	103(99,107)	1534	107(103,112)	1510	114(109,119)	1422	106(101,111)	1409	118(112,123)	1309	117(111,122)	1282	117(112,123)	984	114(108,120)	11156	111(110,113)	9450	113(111,115)
		F	1802	102(98,106)	1781	109(105,113)	1817	113(109,118)	1834	113(108,117)	1744	112(108,117)	1613	108(103,112)	1739	114(110,119)	1427	117(112,123)	13757	111(109,112)	11955	112(111,114)
	Red area a	M	775	103(97,110)	727	113(106,120)	724	123(116,131)	656	112(105,120)	663	126(118,135)	625	126(118,135)	610	123(115,131)	473	120(111,129)	5253	117(115,120)	4478	120(117,123)
		F	848	105(99,111)	824	109(103,116)	945	129(122,136)	858	115(109,122)	851	118(111,125)	773	112(105,118)	875	124(117,131)	731	131(123,139)	6705	117(115,120)	5857	119(117,122)
Heart diseases (390-429)	Red area	M	1080	98(93,103)	926	99(94,105)	996	110(105,116)	967	101(96,106)	1025	116(111,123)	976	118(112,125)	951	115(109,122)	711	110(103,117)	7632	108(106,110)	6552	110(108,112)
		F	1052	94(89,99)	1010	103(98,108)	1083	105(100,111)	1215	109(104,114)	1212	111(105,116)	1126	105(100,110)	1248	114(109,119)	1030	116(110,122)	8976	107(105,109)	7924	109(107,111)
	Red area a	M	490	98(91,106)	436	104(96,113)	457	114(105,123)	428	102(94,111)	473	123(113,132)	467	128(119,139)	453	121(112,131)	330	111(101,122)	3534	112(109,115)	3044	114(111,118)
		F	508	99(92,107)	457	101(93,109)	541	115(107,124)	544	107(99,115)	591	117(109,125)	544	110(102,118)	610	120(112,129)	509	125(116,134)	4304	111(109,114)	3796	113(110,116)
Ischaemic heart diseases (410-414)	Red area	M	607	98(91,104)	543	103(96,111)	574	112(105,120)	561	108(101,116)	570	121(112,129)	559	121(113,130)	523	121(113,131)	353	114(104,125)	4290	111(109,114)	3683	114(111,117)
		F	426	88(81,95)	445	108(100,117)	479	106(98,114)	540	116(108,125)	570	119(111,127)	562	115(107,123)	536	119(110,127)	356	118(108,129)	3914	111(108,114)	3488	114(111,118)
	Red area a	M	258	92(83,102)	248	105(95,117)	250	110(99,122)	234	103(92,115)	257	124(111,137)	274	135(122,149)	258	132(119,146)	154	109(95,124)	1933	113(108,117)	1675	117(112,121)
		F	200	91(80,102)	190	101(89,114)	244	118(106,131)	239	113(101,125)	276	125(113,138)	281	124(112,137)	266	127(114,141)	180	130(114,147)	1876	115(111,120)	1676	119(115,124)
Diseases of the digestive system (520-579)	Red area	M	283	103(93,113)	266	119(107,131)	216	116(104,130)	178	116(102,132)	160	110(96,126)	146	109(95,125)	166	132(115,150)	119	115(99,134)	1534	114(109,119)	1251	117(111,122)
		F	187	116(103,131)	180	114(100,128)	146	91(79,105)	186	121(107,137)	145	97(85,112)	156	112(98,128)	179	128(113,145)	148	125(108,143)	1327	113(107,118)	1140	112(107,118)
	Red area a	M	146	119(103,136)	129	129(111,149)	110	134(113,157)	97	144(121,170)	73	113(92,137)	71	118(96,144)	85	148(122,177)	55	116(92,145)	766	127(120,135)	620	129(121,138)
		F	103	142(120,167)	97	134(112,159)	70	96(78,118)	96	138(116,163)	73	107(87,130)	59	92(73,114)	81	125(103,151)	66	121(97,148)	645	120(112,128)	542	116(108,125)

Supplementary Table S6. Observed number of deaths, Standardized mortality ratios, ratio of SMRs (rr), exact onesided midpvalues by causes of death, area, sex and broad calendar period (1980-2018, 1980-1989, 2010-2018). Red Area refers to the 30 Municipalities of Veneto Region connected to the PFAS contaminated water plant (aquifer), Red Area A refers to the 13 municipalities with also PFAS contamination of groundwater. For each cause of death (column at right), line 1, 2, 3 and 4 give the data for Red area – males, Red area – females, Red area A – males, Red area A females, respectively.

$rr_in = SMR_{80-89} / SMR_{80-18}$ $rr_fi = SMR_{10-18} / SMR_{80-18}$. onesided midpvalues of the null hypothesis $H_0: rr_in=0$ $H_1: rr_in < 1$ and $H_0: rr_fi=0$; $H_1: rr_fi > 1$

obs_80_18	smr_80_18	obs_80_89	smr_80_89	obs_10_18	smr_10_18	rr_start	rr_end	midp_start	midp_end	categorycd9
29629	108	7994	106	6871	113	0.98	1.05	0.05	0	All causes (001-999)
29518	107	7035	105	7905	111	0.98	1.04	0.06	0	
13580	111	3647	107	3191	115	0.96	1.04	0.01	0.02	
14018	110	3274	106	3782	116	0.96	1.05	0.02	0	
9330	106	2313	103	2151	109	0.97	1.03	0.08	0.1	Malignant neoplasms (140-208)
6221	96	1371	94	1632	99	0.98	1.03	0.22	0.11	
4024	102	961	96	964	107	0.94	1.05	0.03	0.07	
2834	96	588	90	741	97	0.94	1.01	0.06	0.39	
624	110	124	113	157	112	1.03	1.02	0.62	0.41	Malignant neoplasm of liver and intrahepatic bile ducts (155)
274	102	59	101	64	98	0.99	0.96	0.48	0.62	
284	113	54	110	69	108	0.97	0.96	0.43	0.64	
118	97	22	83	18	61	0.86	0.63	0.24	0.98	
321	103	71	108	80	113	1.05	1.10	0.66	0.20	Malignant neoplasm of liver and intrahepatic bile ducts (155.0)
111	100	26	93	20	95	0.93	0.95	0.37	0.58	

154	111	28	97	36	111	0.87	1.00	0.24	0.49	
48	96	8	63	8	82	0.66	0.85	0.11	0.65	
514	112	102	116	159	116	1.04	1.04	0.66	0.31	Malignant neoplasm of pancreas (157)
432	90	71	78	147	99	0.87	1.10	0.10	0.12	
227	110	44	113	71	113	1.03	1.03	0.59	0.39	
192	88	26	73	74	109	0.83	1.24	0.17	0.04	
2807	110	741	103	539	112	0.94	1.02	0.04	0.34	Malignant neoplasm of trachea, bronchus and lung (162)
607	87	98	81	198	93	0.93	1.07	0.24	0.17	
1151	101	304	96	227	103	0.95	1.02	0.19	0.38	
281	89	48	88	93	95	0.99	1.07	0.48	0.26	
1131	98	284	105	277	100	1.07	1.02	0.88	0.37	Malignant neoplasm of breast (174)
532	101	126	104	139	108	1.03	1.07	0.63	0.21	
66	101	11	92	19	103	0.91	1.02	0.40	0.45	Malignant neoplasm of corpus uteri (182)
29	97	7	131	5	58	1.35	0.60	0.79	0.88	
301	101	70	102	78	104	1.01	1.03	0.54	0.39	Malignant neoplasm of ovary (183)
123	91	30	98	32	92	1.08	1.01	0.67	0.46	
7	71	5	0	0	0					Malignant neoplasm of testis (186)
6	131	3	0	0	0					
266	106	48	98	81	112	0.92	1.06	0.30	0.31	Malignant neoplasm of kidney and other and unspecified urinary organs (189)
146	104	28	102	46	119	0.98	1.14	0.47	0.18	

106	95	18	83	42	127	0.87	1.34	0.29	0.03	
74	116	10	80	25	140	0.69	1.21	0.12	0.17	
17	83	4	69	4	76	0.83	0.92	0.38	0.54	Malignant neoplasm of the thyroid gland (193)
35	86	12	106	5	61	1.23	0.71	0.77	0.77	
12	131	2	77	2	87	0.59	0.66	0.24	0.69	
18	97	5	98	3	103	1.01	1.06	0.54	0.43	
656	101	145	106	179	102	1.05	1.01	0.72	0.44	Malignant neoplasms of lymphoid, haematopoietic and related tissue (200-208)
545	91	106	91	139	86	1.00	0.95	0.51	0.74	
289	99	61	100	75	94	1.01	0.95	0.54	0.67	
250	91	42	80	67	90	0.88	0.99	0.20	0.53	
594	97	140	96	196	112	0.99	1.15	0.46	0.02	Diabetes mellitus (250)
1049	107	298	101	271	126	0.94	1.18	0.16	0.00	
279	102	65	99	103	130	0.97	1.27	0.41	0.01	
469	104	145	108	117	117	1.04	1.13	0.68	0.10	
11156	111	3240	105	2266	116	0.95	1.05	0.00	0.02	Diseases of the circulatory system (390-459)
13757	111	3583	105	3166	115	0.95	1.04	0.00	0.02	
5253	117	1502	108	1083	122	0.92	1.04	0.00	0.08	
6705	117	1672	107	1606	127	0.91	1.09	0.00	0.00	
7632	108	2006	98	1662	113	0.91	1.05	0.00	0.03	Heart diseases (390-429)

8976	107	2062	98	2278	115	0.92	1.07	0.00	0.00	
3534	112	926	101	783	117	0.90	1.04	0.00	0.11	
4304	111	965	100	1119	122	0.90	1.10	0.00	0.00	
4290	111	1150	100	876	118	0.90	1.06	0.00	0.04	Ischaemic heart diseases (410-414)
3914	111	871	97	892	119	0.87	1.07	0.00	0.02	
1933	113	506	98	412	122	0.87	1.08	0.00	0.06	
1876	115	390	96	446	128	0.83	1.11	0.00	0.01	
1534	114	549	110	285	124	0.96	1.09	0.20	0.08	Diseases of the digestive system (520-579)
1327	113	367	115	327	127	1.02	1.12	0.63	0.02	
766	127	275	123	140	134	0.97	1.06	0.30	0.26	
645	120	200	138	147	123	1.15	1.02	0.97	0.38	