

**Elevated plasma matrix metalloproteinases associate with *Mycobacterium tuberculosis* blood stream infection
and mortality in HIV-associated tuberculosis**

Supplementary Tables and Figure

Supplementary Table S1 Demographic and Clinical Features of Study Participants

	Non-TB	Confirmed TB	Clinical TB	LAM TB	All participants
Frequency, n (%)	72 (16.5)	313 (71.6)	48 (11.0)	4 (0.9)	437 (100)
Median age (years), IQR	39.9 (30.9-49.3)	35.7 (30.5-43.0)	38.0 (31.6-42.5)	36.8 (34.3-37.9)	36.1 (30.8-43.9)
Female, n (%)	40 (55.6)	159 (50.8)	29 (60.4)	2 (50.0)	230 (52.6)
Median CD4 count (cells/mm ³), IQR	89.5 (29.0-224)	56 (18.0-112)	93.0 (53.8-182)	88.0 (26.8-137)	62.0 (22.5-133)
On ART, n (%)	28 (38.9)	95 (30.4)	19 (39.6)	0 (0)	142 (32.5)
Mortality at 12 weeks, n (%)	11 (15.3)	62 (19.8)	9 (18.8)	1 (25.0)	83 (19.0)

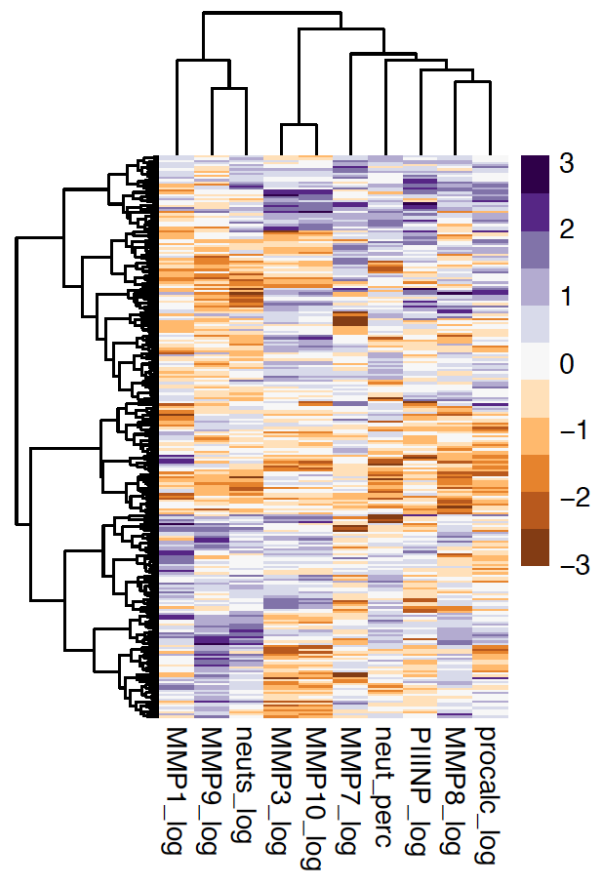
Abbreviations: ART = antiretroviral therapy; IQR = interquartile range; LAM = lipoarabinomannan.

Supplementary Table S2 Matrix metalloproteinase and extracellular matrix breakdown product concentrations

Plasma	No TB		Confirmed TB		Clinical TB		p values [§]	
	Median	IQR	Median	IQR	Median	IQR	No TB vs Confirmed TB	No TB vs Clinical TB
MMP-1 (pg/ml)	4477	1988, 7640	5316	2686, 9756	5163	2671, 9799	0.112	0.162
MMP-3 (pg/ml)	12840	8180, 22951	10716	6934, 15935	8535	5528, 14080	0.021	0.006
MMP-7 (pg/ml)	1071	455, 1967	712	330, 1406	525	174, 1589	0.046	0.088
MMP-8 (pg/ml)	10602	2019, 32205	23712	7688, 47571	4430	2156, 27099	0.003	0.324
MMP-9 (pg/ml)	26512	11079, 45181	26574	14400, 58120	23853	12909, 50802	0.220	0.667
MMP-10 (pg/ml)	7809	4990, 11089	5807	4147, 8009	5310	3798, 7897	<0.001	0.001
PIIINP (pg/ml)	21380	14323, 41866	22712	13978, 40724	19308	12082, 28705	0.941	0.193
HA (ng/ml)	8.26	5.24, 12.9	8.287	5.815, 10.88	8.815	5.29, 15.5	0.640	0.872
Col4α1 (ng/ml)	7.98	7.45, 9.65	9.81	8.42, 12.0	11.7	7.87, 14.7	0.017	0.103

Confirmed TB: *Mycobacterium tuberculosis* identified in clinical samples; Clinical TB: TB was likely and the patient was treated for TB but no microbiological confirmation was obtained; No TB: TB was excluded on clinical and microbiological grounds. Abbreviations: Col4α1 = collagen IV alpha 1; HA = Hyaluronic Acid (HA); IQR = interquartile range (IQR); matrix metalloproteinase (MMP); PIIINP = procollagen N-terminal propeptide. HA and Col4α1 measurement were on a random subgroup of 73 participants.

[§]A Bonferroni correction for multiple comparisons indicated that a p value of <0.025 was equivalent to a significance threshold of <0.05. Significant p values are shown in bold.



Supplementary Figure S1 Plasma matrix metalloproteinase-8 associates with collagen turnover and acute inflammation

Hierarchical clustering analysis demonstrates that plasma matrix metalloproteinase-8 (MMP-8) most closely associated with procalcitonin (procalc) concentrations. Plasma MMP-3 and MMP-10 clustered together, whilst MMP-9 mostly closely clustered with neutrophil count (neuts). The analysis was on scaled data, excluding extreme outliers, which were less than ten data points for any one analyte. Neuts_perc = neutrophil percentage; PIIINP = procollagen III N-terminal propeptide.