

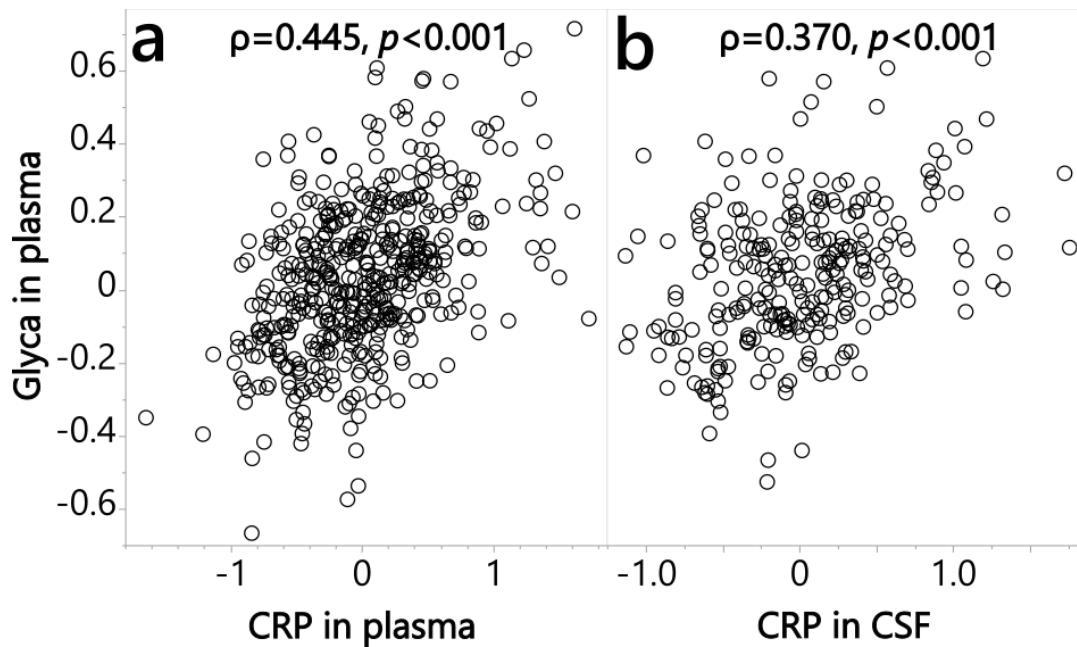
Title: Peripheral inflammation is associated with structural brain atrophy and cognitive decline linked to mild cognitive impairment and Alzheimer's disease

Authors: Nuanyi Liang, Kwangsik Nho, John W. Newman, Matthias Arnold, Kevin Huynh, Peter J. Meikle, Kamil Borkowski, Rima Kaddurah-Daouk, and the Alzheimer's Disease Metabolomics Consortium, for the Alzheimer's Disease Neuroimaging Initiative*

SUPPLEMENTARY MATERIALS

Table of Contents

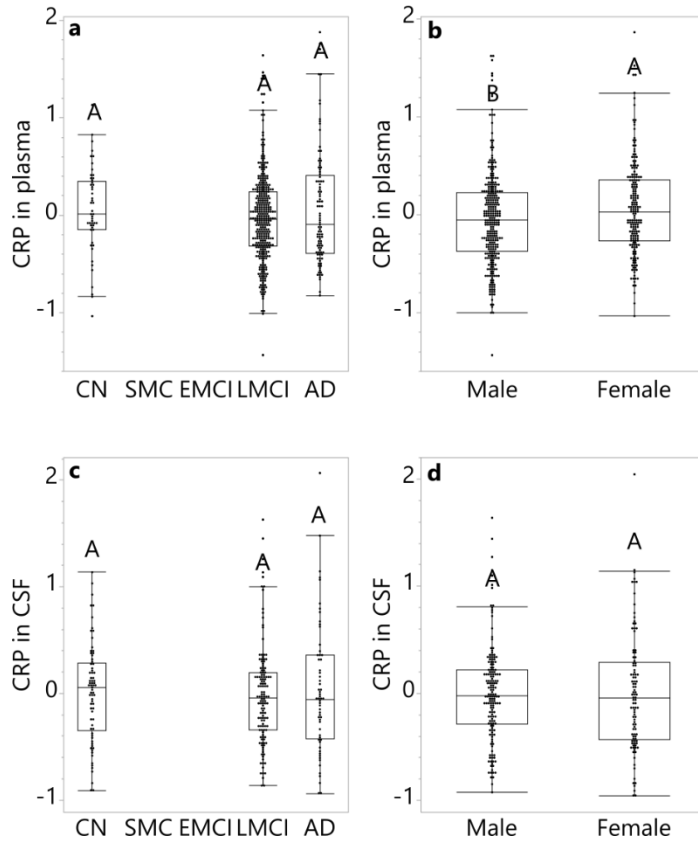
Supplementary Figure S1.....	3
Supplementary Figure S2.....	4
Supplementary Figure S3.....	5
Supplementary Figure S4.....	6
Supplementary Figure S5.....	7
Supplementary Figure S6.....	9
Supplementary Figure S7.....	11
Supplementary Table S1.....	12
Supplementary Table S2.....	14
Supplementary Table S3.....	15
Supplementary Table S4.....	16
Supplementary Table S5.....	22
Supplementary Table S6.....	23
Supplementary Table S7.....	25
Supplementary Table S8.....	26
Supplementary Table S9.....	27



Supplementary Figure S1. Plasma GlycA was associated with a common inflammatory marker, CRP, in both plasma and CSF.

Spearman correlation between **a**) plasma GlycA and CRP in plasma (n=484) and **b**) plasma GlycA and CSF (n=267). All data were normalized and medication-adjusted; participants' diagnosis status ranged from healthy controls to patients with Alzheimer's disease.

Abbreviations: CRP: C-reactive protein; CSF: Cerebrospinal fluid; GlycA: Glycoprotein acetyls.



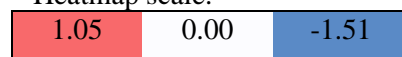
Supplementary Figure S2. CRP in CSF and Blood.

CRP levels were measured in plasma, with participants **a)** grouped by diagnosis status, log₂-transformed and adjusted for medications, sex, age, APOE4, BMI, and education level, and **b)** grouped by sex, log₂-transformed and adjusted for medications, diagnosis status, age, APOE4, BMI, and education level. CRP levels were measured in CSF, with participants **c)** grouped by diagnosis status, log₂-transformed and adjusted for medications, sex, age, APOE4, BMI, and education level, and **d)** grouped by sex, log₂-transformed and adjusted for medications, diagnosis status, age, APOE4, BMI, and education level. ANCOVA and Tukey HSD post hoc analysis were performed; levels not labelled with the same letter differed significantly ($p < 0.05$). Values in the bar graph were shown as the mean residual CRP level \pm standard error.

Abbreviations: AD: Alzheimer's disease; CN: Cognitively normal; CRP: C-reactive protein; CSF: cerebrospinal fluid; EMCI: Early mild cognitive impairment; LMCI: Late mild cognitive impairment; SMC: Significant memory concerns.

Year follow-up	1	2	3	4	5	6	7	8	9	10	11	12	13
CN	A	A	AB	AB	AB	BC	CD	DE	EF	F	DEF	EF	F
SMC	A	A		A	AB	B							
EMCI	A	A	AB	A	BC	ABC	C	C	BC				
LMCI	A	A	B	C	CD	DE	DE	DE	E	E			
AD	A	B											

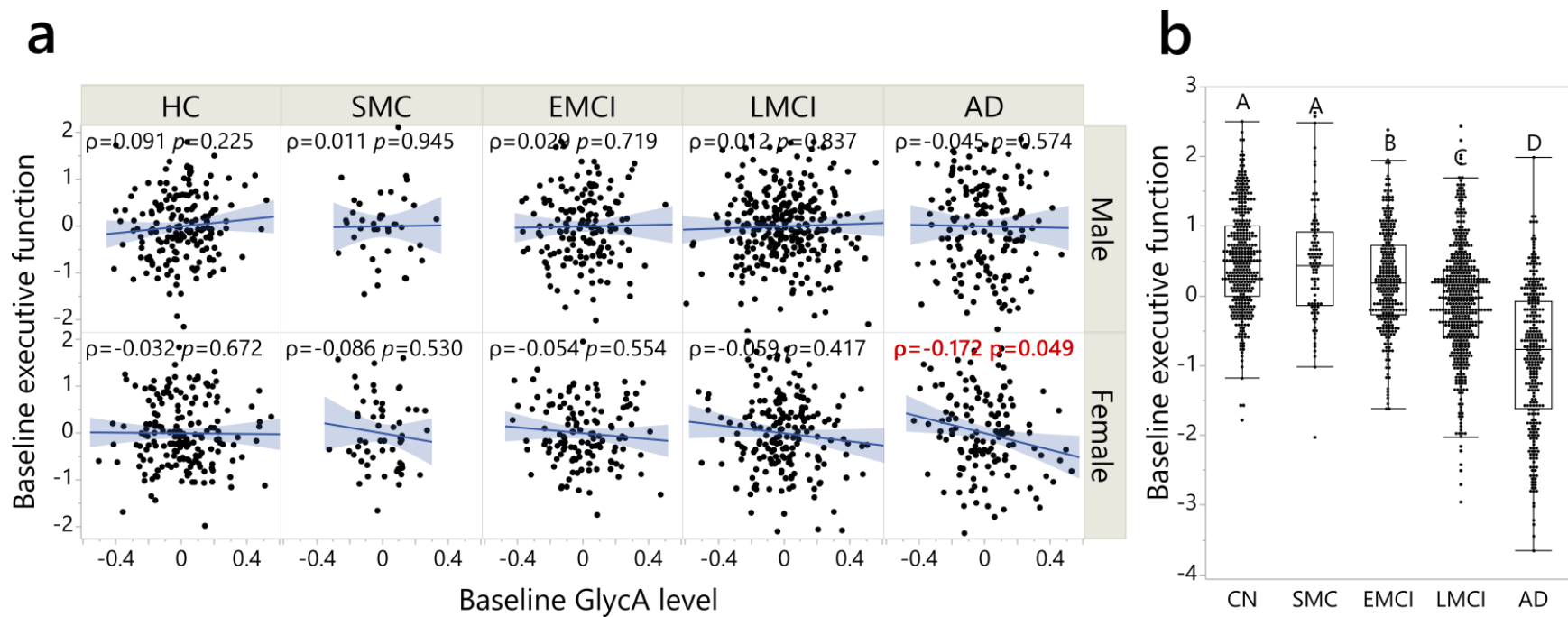
* Heatmap scale:



Supplementary Figure S3. Executive function (EF) progression heatmap in participants diagnosed with CN, SMC, EMCI, LMCI and AD at baseline.

Color scale indicates the least square mean, while the letters annotate the Tukey/t-test analysis results in each diagnose status group, in an ANCOVA model with covariant of year of follow-up, baseline EF, age at screening, BMI at visit, sex, APOE4, and education level; participant ID as a random factor; and stratified by baseline diagnosis. Data points with less than 10 participants were removed; the months of 6 and 18 were not used to simplify illustration. Results here indicates that the EF of participants with LMCI and AD experienced decline faster than participants with CN, SMC, and EMCI.

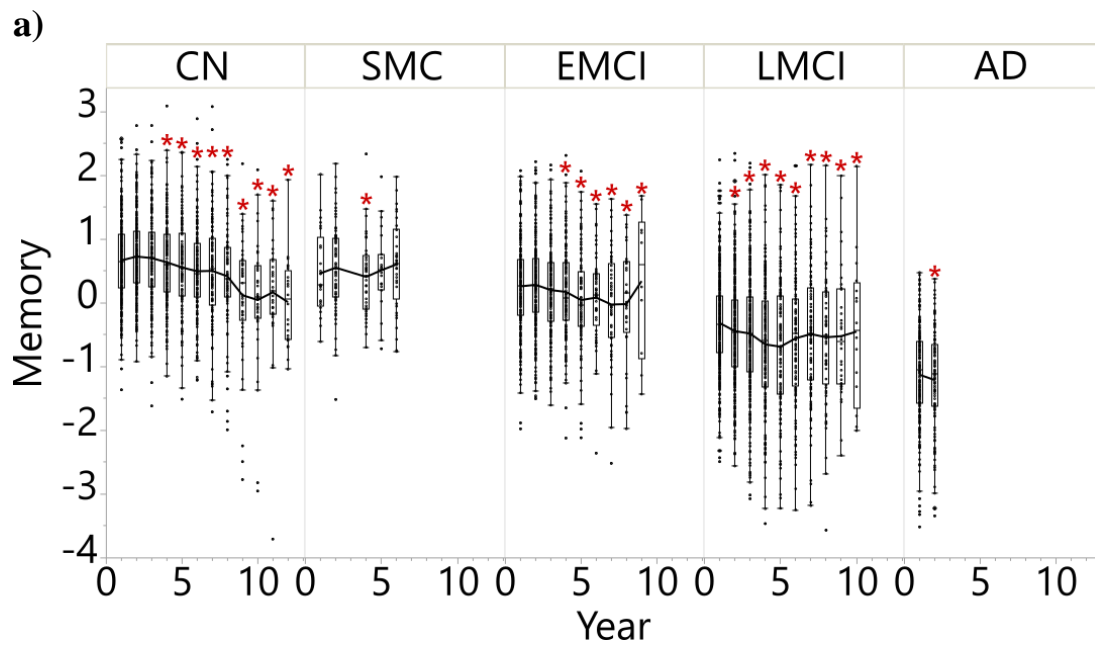
Abbreviations: AD: Alzheimer's disease; BMI: Body mass index; CN: Cognitively normal; EMCI: Early mild cognitive impairment; LMCI: Late mild cognitive impairment; SMC: Significant memory concerns.



Supplementary Figure S4. GlycA was cross-sectionally associated with brain executive functioning (EF) in females with AD.

a) Spearman's rank order correlation results, which was performed between the residual of GlycA (log2-transformed, adjusted medications, APOE4, age, BMI, and education) and executive functioning composite score (adjusted APOE4, age, BMI, and education); all analyses were performed stratified by sex and diagnosis groups. Even though there was no GlycA-sex interaction for EF at different diagnosis status, the sex and diagnosis status stratifications were applied due to the high GlycA level in female participants and in participants with AD (**Figure 2**). **b)** Different levels of EF by diagnosis status, controlling for APOE4, age, BMI, education, and sex. There were no significant sex-diagnosis stages interaction ($p=0.717$) for EF.

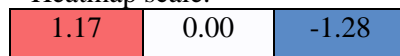
Abbreviations: AD: Alzheimer's disease; BMI: Body mass index; CN: Cognitively normal; EMCI: Early mild cognitive impairment; GlycA: Glycoprotein acetyls; LMCI: Late mild cognitive impairment; SMC: Significant memory concerns.



b)

Year follow up	1	2	3	4	5	6	7	8	9	10	11	12
CN	AB	A	AB	BC	CD	DE	DE	EF	FG	G	FG	G
SMC	A	A		B	AB	AB						
EMCI	A	A	AB	BC	CD	BCD	D	CD	CD			
LMCI	A	B	C	D	DE	DEF	EFG	FGH	GH	H		
AD	A	B										

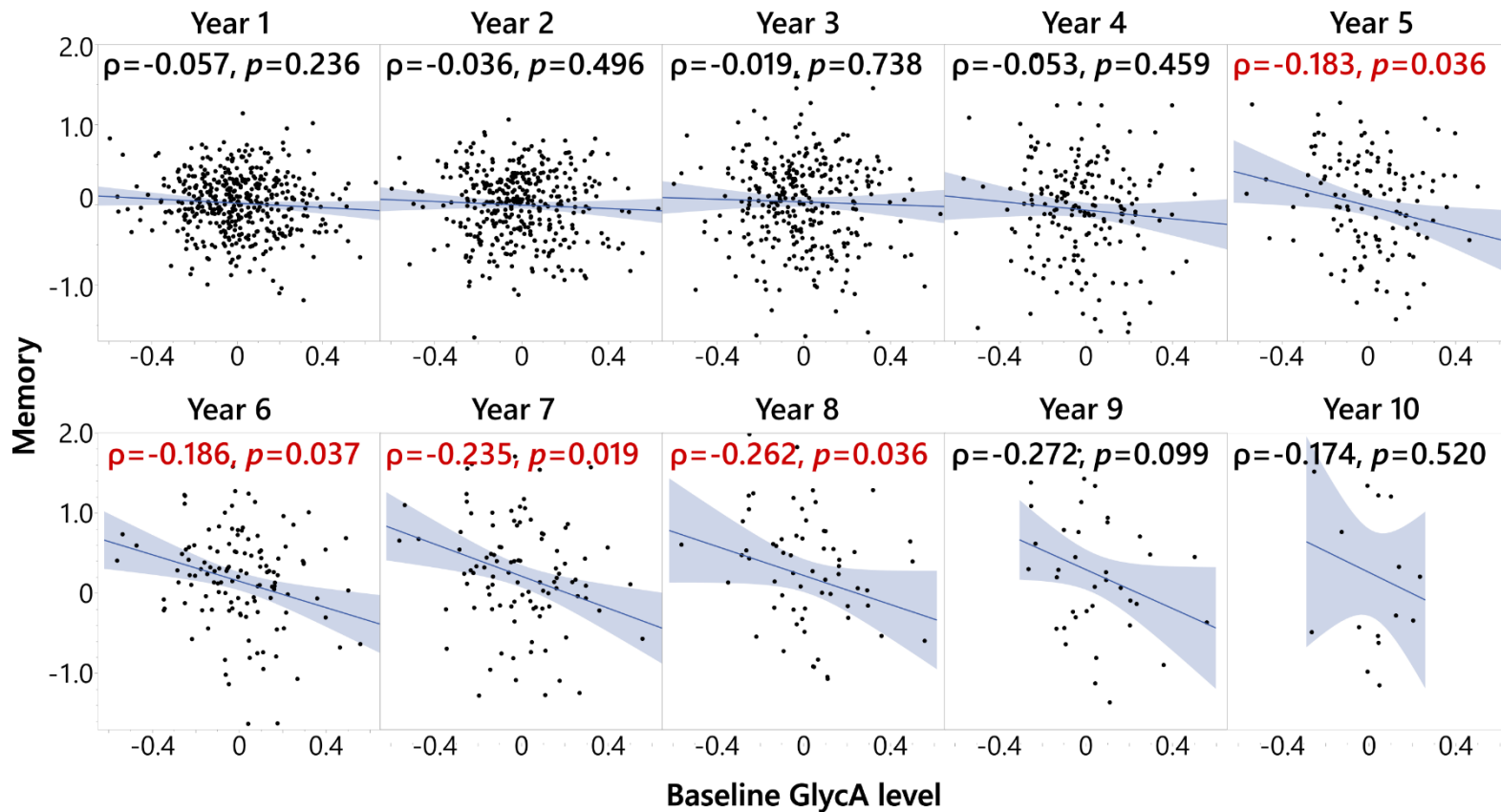
* Heatmap scale:



Supplementary Figure S5. Memory (MEM) progression in participants diagnosed with CN, SMC, EMCI, LMCI and AD at baseline.

a) Memory was memory composite score adjusted by sex, ApoE4, education, BMI at visit and age at screening. Results annotated with * in a) were at a significantly different level compared to Year 1 within the diagnosis group as indicated in b). **b)** The color scale indicates the least square mean, while the letters annotate the Tukey/t-test analysis results in each diagnose status group, in an ANCOVA model with a covariant of year of follow-up, baseline MEM, age at screening, BMI at visit, sex, APOE4, and education level; participant ID as a random factor; and stratified by baseline diagnosis. Data points with less than 10 participants were removed; the months of 6 and 18 were not used to simplify illustration. Results here indicated that the MEM of participants with LMCI and AD experienced decline faster than participants with CN, SMC, and EMCI.

Abbreviations: AD: Alzheimer's disease; ANCOVA: Analysis of covariance; BMI: Body mass index; CN: Cognitively normal; EMCI: Early mild cognitive impairment; LMCI: Late mild cognitive impairment; SMC: Significant memory concerns.



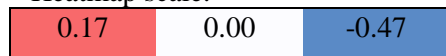
Supplementary Figure S6. Baseline GlycA level was associated with memory composite score (MEM) in late mild cognitive impairment (LMCI) participants at 5-8 years follow-up.

Spearman's rank order correlation was performed on residuals of MEM and GlycA, and the analyses were stratified by diagnosis status. MEM at different years were adjusted for baseline MEM level, screening age, follow up year, BMI at the time, APOE4, sex, and education, treating participants' ID as random factors; baseline GlycA levels were adjusted for medication, screening age, baseline BMI, APOE, sex, and education. The analysis was performed on participants with different diagnosis status, but only in the participants with LMCI was MEM at continuous follow-up years negatively associated with baseline GlycA level. Therefore, the analysis results for the participants with LMCI is shown here. A full factorial linear mixed model was used to show that there were no DX-GlycA interactions in LMCI ($p = 0.441$, **Table S1**) nor sex-GlycA interactions controlling DX ($p = 0.864$).

Abbreviations: BMI: Body mass index; DX: Diagnosis at baseline; EMCI: Early mild cognitive impairment; GlycA: Glycoprotein acetyls; ID: Identification.

Year	1	2	3	4	5	6	7	8	9	10	11	12	13
CN	A	AB	AB	BC	BCD	CDE	FG	DEF	EFG	EFGH	EFGH	GH	H
SMC	AB	A		A	AB	B							
EMCI	A	AB	BC	BC	ABC	C	C	C	ABC				
LMCI	A	B	C	D	DE	E	E	DE	F				
AD	A	B											

* Heatmap scale:



Supplementary Figure S7. Entorhinal cortex (EC) volume progression heatmap in participants diagnosed with CN, SMC, EMCI, LCMI and AD.

The color scale indicates the least square mean, while the letters annotate the Tukey/t-test analysis results in each diagnose status groups, in an ANCOVA model with covariant of year of follow-up, baseline EC volume, screening age, sex, APOE4, BMI at visit and education level; and participant ID as a random factor. All EC volume are log2-transformed and adjusted for magnet type and log2-ICV. Data points with less than 10 participants were removed; the months of 3, 6 and 18 were not used to simplify illustration. Results here indicate that the EC volume of participants with LMCI and AD experienced atrophy faster than participants with CN, SMC, and EMCI.

Abbreviations: AD: Alzheimer's disease; ANCOVA: Analysis of covariance; BMI: Body mass index; CN: Cognitively normal; EMCI: Early mild cognitive impairment; ICV: intracranial volume; LMCI: Late mild cognitive impairment; SMC: Significant memory concerns.

Supplementary Table S1. Linear mixed model to assess the interaction between baseline GlycA and diagnosis status for predicting longitudinal EF/MEM/EntCtx, adjusting age, BMI, baseline EF/MEM/EntCtx, month follow-up, sex, ApoE4, and education, treating subject ID as random effect.

Parameters Estimates					
Variables: EF^[1]	Estimate	Std Error	DFDen	t Ratio	Prob> t
Intercept	0.164454	0.099066	1394	1.66	0.097
DX[CN]*(GlycA ^[2] +0.00563)	0.211384	0.174711	1356	1.21	0.227
DX[SMC]*(GlycA ^[2] +0.00563)	0.01732	0.371251	1547	0.05	0.963
DX[EMCI]*(GlycA ^[2] +0.00563)	0.188913	0.193427	1370	0.98	0.329
DX[LMCI]*(GlycA ^[2] +0.00563)	-0.35729	0.158973	1425	-2.25	0.025
DX[CN]	0.239153	0.032233	1349	7.42	<0.001
DX[SMC]	0.182289	0.057984	1521	3.14	0.002
DX[EMCI]	0.115754	0.034808	1352	3.33	0.001
DX[LMCI]	-0.15716	0.02998	1403	-5.24	<0.001
GlycA ^[2]	-0.14775	0.119449	1526	-1.24	0.216
Sex	0.025016	0.01703	1367	1.47	0.142
ApoE4	0.081882	0.01716	1370	4.77	<0.001
Education	0.002876	0.006061	1366	0.47	0.635
Year follow up	-0.08406	0.003331	4264	-25.24	<0.001

[1]: adjusted age and BMI at the time and baseline EF;

[2]: adjusted medication, screening age and baseline BMI

Random Effect	Var Ratio	Var Component	Std Error	95% Lower	95% Upper	Wald p-Value	% of Total
Participant ID	1.095423	0.268384	0.01344	0.242042	0.294725	<.0001	52.277
Residual		0.245005	0.005616	0.234359	0.256396		47.723
Total		0.513388	0.013991	0.487034	0.541952		100

Variables: MEM^[1]	Estimate	Std Error	DFDen	t Ratio	Prob> t
Intercept	0.205727	0.070564	1414	2.92	0.004
DX[CN]*(GlycA ^[2] +0.00564)	0.090745	0.124461	1372	0.73	0.466
DX[SMC]*(GlycA ^[2] +0.00564)	0.025396	0.263563	1565	0.1	0.923
DX[EMCI]*(GlycA ^[2] +0.00564)	-0.03293	0.137831	1385	-0.24	0.811
DX[LMCI]*(GlycA ^[2] +0.00564)	-0.08712	0.113133	1436	-0.77	0.441
DX[CN]	0.081501	0.02297	1367	3.55	0.000
DX[SMC]	0.016512	0.041259	1540	0.4	0.689
DX[EMCI]	0.046266	0.024813	1368	1.86	0.063
DX[LMCI]	-0.06633	0.021368	1419	-3.1	0.002
GlycA ^[2]	-0.12042	0.084895	1541	-1.42	0.156
Sex	0.027531	0.012148	1386	2.27	0.024
ApoE4	0.081963	0.012229	1388	6.7	0.000
Education	-0.00043	0.004316	1385	-0.1	0.922

Year follow up -0.07109 0.002449 4327 -29.03 0.000

[1]: adjusted age and BMI at the time and baseline MEM

[2]: adjusted medication, screening age and baseline BMI

Random Effect	Var Ratio	Var Component	Std Error	95% Lower	95% Upper	Wald p-Value	% of Total
Participant ID	1.054251	0.135832	0.006793	0.122519	0.149145	<.0001	51.32
Residual		0.128842	0.002933	0.123282	0.13479		48.68
Total		0.264674	0.007111	0.251272	0.279183		100

Variables: EntCtx ^[1]	Estimate	Std Error	DFDen	t Ratio	Prob> t
Intercept	0.075462	0.024712	1345	3.05	0.002
DX[CN]*(GlycA ^[2] +0.00516)	-0.03511	0.043557	1284	-0.81	0.42
DX[SMC]*(GlycA ^[2] +0.00516)	0.127813	0.096816	1572	1.32	0.187
DX[EMCI]*(GlycA ^[2] +0.00516)	0.000871	0.048991	1393	0.02	0.986
DX[LMCI]*(GlycA ^[2] +0.00516)	-0.11209	0.040149	1381	-2.79	0.005
DX[CN]	0.032834	0.008017	1289	4.1	<0.001
DX[SMC]	0.041378	0.014818	1557	2.79	0.005
DX[EMCI]	0.018222	0.008768	1356	2.08	0.038
DX[LMCI]	-0.03359	0.007539	1384	-4.46	<0.001
GlycA ^[2]	-0.03025	0.03072	1533	-0.98	0.325
Sex	0.014059	0.004262	1312	3.3	0.001
ApoE4	0.015549	0.004293	1322	3.62	<0.001
Education	-0.00014	0.001507	1301	-0.09	0.928
Year follow up	-0.02405	0.001037	3579	-23.18	<0.001

[1]: adjusted age and BMI at the time and baseline EntCtx, after adjusting all log2-volume with log2-ICV and magnet type

[2]: adjusted medication, screening age and baseline BMI

Random Effect	Var Ratio	Var Component	Std Error	95% Lower	95% Upper	Wald p-Value	Pct of Total
Participant ID	0.673279	0.01348	0.000823	0.011867	0.015094	<.0001	40.237
Residual		0.020022	0.000522	0.019037	0.021086		59.763
Total		0.033502	0.000887	0.031829	0.035311		100

Abbreviations: BMI: Body mass index; CN: Cognitively normal; DX: Diagnosis at baseline; EF: Executive Function; EMCI: Early mild cognitive impairment; EntCtx: Entorhinal cortex volume; GlycA: Glycoprotein acetyls; ID: Identification; LMCI: Late mild cognitive impairment; SMC: Significant memory concerns.

Supplementary Table S2. Baseline GlycA level was associated with EF and MEM in the continuous follow-up years in participants, only in participants diagnosis with LMCI at baseline.

Parameters	Year	p-value					Spearman rho (ρ)				
		CN	SMC	EMCI	LMCI	AD	CN	SMC	EMCI	LMCI	AD
EF	1	0.301	0.994	0.512	0.153	0.884	0.057	-0.002	0.041	-0.069	0.01
	2	0.935	0.255	0.145	0.108	0.961	0.005	-0.132	0.098	-0.084	-0.004
	3	0.05	0.019	0.692	0.036	0.873	0.145	-0.886	-0.029	-0.119	0.1
	4	0.519	0.442	0.044	0.001	NA	0.047	0.123	0.164	-0.236	-1
	5	0.246	0.654	0.866	0.003	NA	0.109	0.104	0.018	-0.265	NA
	6	0.587	0.467	0.884	0	NA	0.044	0.12	0.019	-0.381	NA
	7	0.972	NA	0.065	0.002	NA	0.003	NA	-0.26	-0.314	NA
	8	0.286	NA	0.866	0.001	NA	-0.116	NA	-0.031	-0.391	NA
	9	0.886	NA	0.829	0.037	NA	-0.021	NA	0.079	-0.349	NA
	10	0.804	NA	NA	0.459	NA	0.042	NA	NA	-0.207	NA
	11	0.109	NA	NA	0.747	NA	0.284	NA	NA	-0.2	NA
	12	0.332	NA	NA	0.667	NA	0.207	NA	NA	0.5	NA
	13	0.856	NA	NA	NA	NA	-0.039	NA	NA	NA	NA
MEM	1	0.695	0.69	0.381	0.236	0.242	-0.022	-0.084	-0.055	-0.057	-0.079
	2	0.232	0.43	0.376	0.496	0.931	-0.068	-0.091	-0.06	-0.036	-0.008
	3	0.255	NA	0.251	0.738	0.266	0.084	1	-0.083	-0.019	-0.543
	4	0.36	0.131	0.95	0.459	NA	0.066	0.24	-0.005	-0.053	-1
	5	0.147	0.713	0.158	0.036	NA	0.136	-0.081	-0.146	-0.183	NA
	6	0.15	0.179	0.655	0.037	NA	0.115	-0.217	0.058	-0.186	NA
	7	0.11	NA	0.896	0.019	NA	0.146	NA	-0.018	-0.235	NA
	8	0.244	NA	0.343	0.036	NA	0.126	NA	0.171	-0.262	NA
	9	0.668	NA	0.385	0.099	NA	0.062	NA	-0.309	-0.272	NA
	10	0.097	NA	NA	0.520	NA	0.273	NA	NA	-0.174	NA
	11	0.134	NA	NA	0.266	NA	0.266	NA	NA	-0.543	NA
	12	0.198	NA	NA	NA	NA	-0.272	NA	NA	1	NA
	13	NA	NA	NA	NA	NA	NA	NA	NA	NA	NA

Abbreviations: AD: Alzheimer's disease; CN: Cognitively normal; EF: Executive Function; EMCI: Early mild cognitive impairment; GlycA: Glycoprotein acetyls; LMCI: Late mild cognitive impairment; MEM: Memory; SMC: Significant memory concerns.

Supplementary Table S3. Linear mixed models to evaluate the relationships between GlycA and markers for cognition and structural atrophy.

Feature	Model 1	Model 2	Model 3	Model 4
Outcome (Y)	Longitudinal EF	Longitudinal MEM	Longitudinal MEM	Longitudinal EntCtx (ICV and magnet type adjusted)
Main Predictor (X ₁)	Baseline GlycA (medication adjusted)	Baseline GlycA (medication adjusted)	Baseline GlycA (medication adjusted)	Baseline GlycA (medication adjusted)
Other covariates (X _n)	Baseline EF, Month follow up, Age at screening, BMI at visit, Sex, The presence of ApoE4, Education.	Baseline MEM, Month follow up, Age at screening, BMI at visit, Sex, The presence of ApoE4, Education.	Baseline MEM, Month follow up, Age at screening, BMI at visit, Sex, The presence of ApoE4, Education, DX at baseline.	Baseline EntCtx (ICV and magnet type adjusted), Month follow up, Age at screening, BMI at visit, Sex, The presence of ApoE4, Education.
Random effect	Participant ID	Participant ID	Participant ID	Participant ID
Stratified by	DX (diagnosis status) at baseline	DX at baseline		DX at baseline
p and $\beta_{estimate}$ for the main predictor	CN: $\beta= 0.01$, $p=0.932$ SMC: $\beta= -0.33$, $p=0.335$ EMCI: $\beta= 0.08$, $p=0.661$ LMCI: $\beta= -0.45$, $p=0.001$ AD: $\beta= -0.02$, $p=0.902$	CN: $\beta= -0.03$, $p=0.721$ SMC: $\beta= -0.04$, $p=0.812$ EMCI: $\beta= -0.07$, $p=0.453$ LMCI: $\beta= -0.14$, $p=0.063$ AD: $\beta= -0.04$, $p=0.611$	$\beta= -0.09$, $p=0.037$	CN: $\beta= -0.04$, $p=0.168$ SMC: $\beta= 0.03$, $p=0.708$ EMCI: $\beta= -0.02$, $p=0.488$ LMCI: $\beta= -0.10$, $p<0.001$ AD: $\beta= 0.02$, $p=0.485$

Abbreviations: AD: Alzheimer's disease; BMI: Body mass index; CN: Cognitively normal; DX: Diagnosis at baseline; EF: Executive Function; EMCI: Early mild cognitive impairment; EntCtx: Entorhinal cortex volume; GlycA: Glycoprotein acetyls; ICV: Intracranial volume; LMCI: Late mild cognitive impairment; MEM: Memory; SMC: Significant memory concerns.

Supplementary Table S4. Baseline GlycA level was not associated with other brain regional volumes, other than entorhinal cortex, in the continuous follow up years in participants regardless of participant diagnosis at baseline.

Parameters	Year	p-value					Spearman rho (ρ)				
		CN	SMC	EMCI	LMCI	AD	CN	SMC	EMCI	LMCI	AD
Bilateral total entorhinal cortex volume	1	0.848	0.270	0.580	0.098	0.585	-0.011	0.240	-0.035	-0.081	0.039
	2	0.281	0.635	0.443	0.011	0.671	-0.064	0.060	-0.054	-0.140	-0.041
	3	0.831	NA	0.410	0.185	NA	0.018	NA	0.092	-0.097	NA
	4	0.723	0.217	0.293	0.040	NA	-0.028	0.228	-0.104	-0.165	NA
	5	0.425	0.638	0.182	0.115	NA	0.090	-0.109	-0.265	-0.172	NA
	6	0.433	0.633	0.508	0.024	NA	0.069	-0.091	-0.100	-0.224	NA
	7	0.064	NA	0.477	0.026	NA	0.199	NA	-0.116	-0.257	NA
	8	0.228	NA	0.296	0.025	NA	0.148	NA	0.194	-0.345	NA
	9	0.027	NA	0.519	0.321	NA	0.410	NA	0.218	-0.275	NA
	10	0.005	NA	NA	NA	NA	-0.701	NA	NA	NA	NA
	11	0.322	NA	NA	NA	NA	-0.227	NA	NA	NA	NA
	12	0.348	NA	NA	NA	NA	-0.228	NA	NA	NA	NA
	13	0.977	NA	NA	NA	NA	-0.007	NA	NA	NA	NA
Bilateral total cingulate volume	1	0.479	0.154	0.230	0.957	0.282	-0.039	-0.307	-0.077	0.003	0.076
	2	0.080	0.831	0.766	0.909	0.841	-0.104	0.027	0.021	-0.006	-0.019
	3	0.506	NA	0.702	0.858	NA	-0.056	NA	0.043	-0.013	NA
	4	0.857	0.695	0.946	0.138	NA	-0.014	0.073	0.007	-0.119	NA
	5	0.490	0.750	0.710	0.247	NA	-0.078	0.074	0.075	-0.127	NA
	6	0.228	0.296	0.186	0.560	NA	-0.106	-0.197	-0.198	-0.059	NA
	7	0.855	NA	0.939	0.626	NA	-0.020	NA	-0.013	-0.057	NA
	8	0.693	NA	0.397	0.266	NA	0.049	NA	0.158	-0.176	NA
	9	0.177	NA	0.689	0.657	NA	0.258	NA	-0.136	-0.125	NA
	10	0.615	NA	NA	NA	NA	0.147	NA	NA	NA	NA
	11	0.598	NA	NA	NA	NA	0.122	NA	NA	NA	NA
	12	0.904	NA	NA	NA	NA	-0.030	NA	NA	NA	NA
	13	0.823	NA	NA	NA	NA	0.057	NA	NA	NA	NA
Total cerebral cortex grey matter volume	1	0.901	0.865	0.323	0.118	0.287	0.007	-0.038	-0.063	0.077	0.075
	2	0.092	0.266	0.858	0.616	0.675	-0.100	0.140	-0.013	0.028	0.041
	3	0.486	NA	0.904	0.371	NA	0.059	NA	-0.014	-0.066	NA

	4	0.937	0.823	0.824	0.101	NA	-0.006	0.042	0.022	-0.132	NA
	5	0.207	0.699	0.585	0.113	NA	0.143	-0.090	-0.110	-0.173	NA
	6	0.362	0.838	0.652	0.436	NA	-0.080	-0.039	0.068	-0.079	NA
	7	0.885	NA	0.876	0.488	NA	-0.016	NA	0.026	-0.081	NA
	8	0.245	NA	0.591	0.033	NA	0.143	NA	0.100	-0.331	NA
	9	0.041	NA	0.519	0.182	NA	0.381	NA	-0.218	-0.364	NA
	10	0.748	NA	NA	NA	NA	0.095	NA	NA	NA	NA
	11	0.239	NA	NA	NA	NA	0.269	NA	NA	NA	NA
	12	0.226	NA	NA	NA	NA	0.291	NA	NA	NA	NA
	13	0.627	NA	NA	NA	NA	0.123	NA	NA	NA	NA
Bilateral total frontal lobe volume	1	0.770	0.383	0.201	0.014	0.884	-0.016	-0.191	-0.082	0.121	0.010
	2	0.181	0.166	0.912	0.078	0.756	-0.079	0.174	0.008	0.098	0.030
	3	0.889	NA	0.673	0.428	NA	0.012	NA	-0.047	0.058	NA
	4	0.497	0.732	0.894	0.106	NA	-0.054	0.064	0.013	-0.130	NA
	5	0.797	0.548	0.873	0.239	NA	0.029	0.139	-0.032	-0.129	NA
	6	0.300	0.638	0.932	0.513	NA	-0.091	0.090	0.013	0.066	NA
	7	0.582	NA	0.573	0.508	NA	-0.060	NA	-0.092	-0.078	NA
	8	0.854	NA	0.406	0.185	NA	0.023	NA	0.155	-0.209	NA
	9	0.080	NA	0.631	0.098	NA	0.331	NA	-0.164	-0.443	NA
	10	0.771	NA	NA	NA	NA	0.086	NA	NA	NA	NA
	11	0.263	NA	NA	NA	NA	0.256	NA	NA	NA	NA
	12	0.311	NA	NA	NA	NA	0.246	NA	NA	NA	NA
	13	0.526	NA	NA	NA	NA	0.160	NA	NA	NA	NA
Bilateral mean grey matter volume	1	0.921	0.989	0.315	0.112	0.386	0.006	0.003	-0.064	0.078	0.061
	2	0.072	0.275	0.816	0.614	0.588	-0.106	0.137	-0.016	0.028	0.052
	3	0.529	NA	0.925	0.399	NA	0.053	NA	-0.011	-0.062	NA
	4	0.908	0.663	0.788	0.094	NA	-0.009	0.082	0.027	-0.135	NA
	5	0.206	0.552	0.579	0.089	NA	0.143	-0.138	-0.112	-0.186	NA
	6	0.327	0.986	0.816	0.428	NA	-0.086	0.003	0.035	-0.080	NA
	7	0.795	NA	0.860	0.437	NA	-0.028	NA	0.029	-0.091	NA
	8	0.258	NA	0.561	0.032	NA	0.139	NA	0.109	-0.332	NA
	9	0.043	NA	0.519	0.173	NA	0.378	NA	-0.218	-0.371	NA
	10	0.771	NA	NA	NA	NA	0.086	NA	NA	NA	NA
	11	0.243	NA	NA	NA	NA	0.266	NA	NA	NA	NA

	12	0.226	NA	NA	NA	NA	0.291	NA	NA	NA	NA
	13	0.723	NA	NA	NA	NA	0.090	NA	NA	NA	NA
Bilateral mean hippocampus volume	1	0.858	0.240	0.252	0.236	0.881	0.010	0.255	-0.073	0.058	0.011
	2	0.147	0.266	0.952	0.221	0.391	-0.086	-0.140	0.004	-0.068	-0.083
	3	0.915	NA	0.766	0.185	NA	0.009	NA	0.033	-0.097	NA
	4	0.326	0.168	0.722	0.083	NA	0.078	0.254	0.035	-0.139	NA
	5	0.253	0.827	0.885	0.189	NA	0.129	0.051	0.029	-0.144	NA
	6	0.121	0.545	0.881	0.502	NA	0.136	0.115	-0.023	-0.068	NA
	7	0.057	NA	0.290	0.113	NA	0.205	NA	-0.172	-0.185	NA
	8	0.041	NA	0.693	0.036	NA	0.249	NA	0.074	-0.325	NA
	9	0.101	NA	0.853	0.147	NA	0.311	NA	-0.064	-0.393	NA
	10	0.523	NA	NA	NA	NA	0.187	NA	NA	NA	NA
	11	0.162	NA	NA	NA	NA	0.317	NA	NA	NA	NA
	12	0.254	NA	NA	NA	NA	0.275	NA	NA	NA	NA
	13	0.185	NA	NA	NA	NA	0.327	NA	NA	NA	NA
Bilateral total lateral temporal lobe volume	1	0.885	0.474	0.086	0.243	0.676	-0.008	-0.157	-0.110	0.057	0.029
	2	0.031	0.234	0.259	0.431	0.170	-0.127	0.150	-0.079	-0.044	0.132
	3	0.438	NA	0.812	0.093	NA	0.065	NA	0.027	-0.123	NA
	4	0.236	0.608	0.510	0.091	NA	0.094	0.096	-0.065	-0.136	NA
	5	0.027	0.253	0.072	0.113	NA	0.248	-0.261	-0.352	-0.173	NA
	6	0.941	0.135	0.482	0.089	NA	0.007	-0.279	-0.106	-0.170	NA
	7	0.330	NA	0.935	0.229	NA	0.106	NA	0.013	-0.141	NA
	8	0.081	NA	0.955	0.084	NA	0.213	NA	0.011	-0.269	NA
	9	0.086	NA	0.650	0.308	NA	0.325	NA	-0.155	-0.282	NA
	10	0.342	NA	NA	NA	NA	0.275	NA	NA	NA	NA
	11	0.987	NA	NA	NA	NA	0.004	NA	NA	NA	NA
	12	0.892	NA	NA	NA	NA	-0.033	NA	NA	NA	NA
	13	0.791	NA	NA	NA	NA	-0.067	NA	NA	NA	NA
Bilateral total medial temporal lobe volume	1	0.312	0.455	0.256	0.988	0.554	-0.056	0.164	-0.073	0.001	0.042
	2	0.021	0.993	0.136	0.507	0.353	-0.136	-0.001	-0.104	-0.037	0.090
	3	0.541	NA	0.389	0.187	NA	0.052	NA	0.097	-0.096	NA
	4	0.836	0.324	0.876	0.024	NA	-0.016	0.183	0.015	-0.181	NA
	5	0.019	0.486	0.494	0.060	NA	0.261	-0.161	-0.137	-0.205	NA

	6	0.631	0.670	0.809	0.090	NA	0.042	-0.081	0.037	-0.170	NA
	7	0.087	NA	0.840	0.077	NA	0.185	NA	-0.033	-0.205	NA
	8	0.046	NA	0.404	0.067	NA	0.242	NA	0.155	-0.286	NA
	9	0.010	NA	0.894	0.012	NA	0.468	NA	-0.046	-0.629	NA
	10	0.455	NA	NA	NA	NA	-0.218	NA	NA	NA	NA
	11	0.268	NA	NA	NA	NA	0.253	NA	NA	NA	NA
	12	0.737	NA	NA	NA	NA	-0.083	NA	NA	NA	NA
	13	0.657	NA	NA	NA	NA	0.113	NA	NA	NA	NA
Bilateral total occipital lobe volume	1	0.917	0.500	0.092	0.619	0.459	0.006	0.148	-0.108	0.024	0.052
	2	0.186	0.245	0.527	0.796	0.266	-0.078	0.146	0.044	0.014	0.108
	3	0.690	NA	0.634	0.792	NA	0.034	NA	0.053	-0.019	NA
	4	0.455	0.748	0.789	0.028	NA	-0.059	0.060	0.026	-0.177	NA
	5	0.645	0.430	0.596	0.282	NA	0.052	-0.182	-0.107	-0.118	NA
	6	0.073	0.682	0.402	0.779	NA	-0.157	0.078	0.127	0.028	NA
	7	0.367	NA	0.470	0.587	NA	-0.098	NA	0.118	-0.064	NA
	8	0.633	NA	0.398	0.151	NA	0.059	NA	0.157	-0.226	NA
	9	0.336	NA	0.417	0.173	NA	0.185	NA	-0.273	-0.371	NA
	10	0.829	NA	NA	NA	NA	0.064	NA	NA	NA	NA
	11	0.205	NA	NA	NA	NA	0.288	NA	NA	NA	NA
	12	0.557	NA	NA	NA	NA	-0.144	NA	NA	NA	NA
	13	0.868	NA	NA	NA	NA	-0.042	NA	NA	NA	NA
Bilateral total parietal lobe volume	1	0.872	0.819	0.319	0.140	0.248	0.009	0.050	-0.064	0.072	0.081
	2	0.055	0.335	0.742	0.684	0.944	-0.113	0.121	-0.023	0.023	0.007
	3	0.940	NA	0.159	0.161	NA	0.006	NA	-0.157	-0.103	NA
	4	0.687	0.884	0.403	0.133	NA	-0.032	0.027	0.082	-0.121	NA
	5	0.396	0.737	0.652	0.058	NA	0.096	-0.078	0.091	-0.206	NA
	6	0.116	0.864	0.234	0.362	NA	-0.138	0.033	0.179	-0.092	NA
	7	0.185	NA	0.782	0.601	NA	-0.143	NA	0.045	-0.061	NA
	8	0.435	NA	0.949	0.013	NA	0.096	NA	-0.012	-0.381	NA
	9	0.089	NA	0.689	0.383	NA	0.321	NA	-0.136	-0.243	NA
	10	0.946	NA	NA	NA	NA	-0.020	NA	NA	NA	NA
	11	0.260	NA	NA	NA	NA	0.257	NA	NA	NA	NA
	12	0.329	NA	NA	NA	NA	0.237	NA	NA	NA	NA
	13	0.311	NA	NA	NA	NA	0.253	NA	NA	NA	NA

Bilateral total sensory motor volume	1	0.801	0.556	0.304	0.104	0.413	-0.014	-0.129	-0.066	0.080	0.058
	2	0.276	0.954	0.821	0.127	0.642	-0.065	0.007	-0.016	0.085	0.045
	3	0.852	NA	0.396	0.578	NA	0.016	NA	-0.095	0.041	NA
	4	0.409	0.998	0.181	0.917	NA	-0.065	0.000	0.132	-0.008	NA
	5	0.765	0.862	0.392	0.125	NA	0.034	-0.040	-0.172	-0.168	NA
	6	0.067	0.795	0.369	0.892	NA	-0.160	-0.050	0.136	0.014	NA
	7	0.106	NA	0.252	0.637	NA	-0.174	NA	0.186	-0.055	NA
	8	0.548	NA	0.180	0.025	NA	0.074	NA	0.247	-0.345	NA
	9	0.124	NA	0.285	0.277	NA	0.292	NA	-0.355	-0.300	NA
	10	0.958	NA	NA	NA	NA	-0.015	NA	NA	NA	NA
	11	0.203	NA	NA	NA	NA	0.290	NA	NA	NA	NA
	12	0.446	NA	NA	NA	NA	0.186	NA	NA	NA	NA
	13	0.414	NA	NA	NA	NA	0.205	NA	NA	NA	NA
Bilateral total temporal lobe volume	1	0.516	0.747	0.142	0.376	0.662	-0.036	-0.071	-0.094	0.044	0.031
	2	0.013	0.336	0.141	0.374	0.244	-0.146	0.121	-0.103	-0.049	0.113
	3	0.389	NA	0.624	0.120	NA	0.073	NA	0.055	-0.114	NA
	4	0.479	0.375	0.657	0.051	NA	0.056	0.165	-0.044	-0.157	NA
	5	0.023	0.297	0.134	0.102	NA	0.255	-0.239	-0.296	-0.178	NA
	6	0.784	0.307	0.671	0.069	NA	0.024	-0.193	-0.064	-0.182	NA
	7	0.205	NA	0.830	0.167	NA	0.137	NA	-0.035	-0.161	NA
	8	0.057	NA	0.696	0.062	NA	0.232	NA	0.073	-0.290	NA
	9	0.019	NA	0.650	0.111	NA	0.433	NA	-0.155	-0.429	NA
	10	0.615	NA	NA	NA	NA	0.147	NA	NA	NA	NA
	11	0.666	NA	NA	NA	NA	0.100	NA	NA	NA	NA
	12	0.904	NA	NA	NA	NA	-0.030	NA	NA	NA	NA
	13	0.735	NA	NA	NA	NA	0.086	NA	NA	NA	NA
White Matter Hyperintensities	1	0.505	0.248	0.929	0.050	0.212	-0.037	-0.251	-0.006	0.097	0.088
	2	0.845	0.313	0.606	0.203	0.593	-0.012	-0.128	-0.036	0.072	0.053
	3	0.078	NA	0.364	0.858	NA	-0.160	NA	0.101	0.015	NA
	4	0.484	0.467	0.746	0.560	NA	0.070	0.136	0.032	0.073	NA
	5	0.647	0.291	0.023	0.693	NA	-0.112	-0.242	0.437	0.100	NA
	6	0.299	0.901	0.720	0.681	NA	-0.131	0.024	0.054	0.070	NA
	7	0.019	NA	0.960	0.747	NA	-0.361	NA	-0.008	0.052	NA

8	0.122	NA	0.980	0.155	NA	-0.237	NA	-0.005	0.293	NA
9	0.762	NA	0.043	0.383	NA	-0.098	NA	0.649	0.393	NA
10	0.170	NA	NA	NA	NA	-0.500	NA	NA	NA	NA
11	0.504	NA	NA	NA	NA	-0.155	NA	NA	NA	NA
12	0.681	NA	NA	NA	NA	-0.104	NA	NA	NA	NA
13	0.997	NA	NA	NA	NA	0.001	NA	NA	NA	NA

Abbreviations: AD: Alzheimer's disease; CN: Cognitively normal; EMCI: Early mild cognitive impairment; EntCtx: Entorhinal cortex volume; LMCI: Late mild cognitive impairment; SMC: Significant memory concerns.

Supplementary Table S5. Plasma GlycA was correlated with regional brain volumes in females with AD and LMCI. Spearman's rank order correlation was performed between the residual of GlycA (log2-transformed, adjusted medications, APOE4, age, BMI, and education), and residuals of whole brain regional volumes (log2-transformed, adjusted intracranial volume (log2 transformed), magnet strength/scan type, APOE4, age, BMI, education); the analysis was performed stratified by sex and diagnosis groups. In addition, linear regressions were performed to evaluate the GlycA-sex interaction stratified by diagnosis status, and GlycA-diagnosis status interaction stratified by sex; both analyses were again done while also adjusting APOE4, age, BMI, education, magnet strength/scan type, and intracranial volume (log2 transformed). FDR correlations were performed for each stratified analysis. Results annotated with * and underlined were significant ($p < 0.05$) and passed FDR correction of $q = 0.2$; other highlighted results were significant ($p < 0.05$) but did not pass FDR.

Measurement	Spearman rho (ρ)										p (interaction)						
	Male					Female					GlycA-sex interaction				GlycA-diagnosis interaction		
	CN	SMC	EMCI	LMCI	AD	CN	SMC	EMCI	LMCI	AD	CN	SMC	EMCI	LMCI	AD	Male	Female
Bilateral total frontal lobe volume	0.025	-0.061	0.017	0.032	0.179	0.056	<u>-0.337 *</u>	-0.041	0.028	<u>-0.343 *</u>	0.457	0.312	0.734	0.532	<u><0.001 *</u>	0.569	0.021
Total cerebral cortex grey matter volume	0.028	-0.056	-0.066	0.017	0.096	0.118	<u>-0.329 *</u>	-0.023	-0.002	<u>-0.269 *</u>	0.379	0.424	0.389	0.397	<u>0.008 *</u>	0.357	0.022
Bilateral mean grey matter volume	0.024	-0.044	-0.057	0.018	0.101	0.114	<u>-0.341 *</u>	-0.024	-0.005	<u>-0.267 *</u>	0.352	0.428	0.443	0.341	<u>0.007 *</u>	0.374	0.031
Bilateral total parietal lobe volume	-0.002	-0.010	-0.133	0.030	0.040	0.071	-0.254	0.054	0.022	<u>-0.222 *</u>	0.355	0.617	0.068	0.790	0.094	0.182	0.207
Bilateral total sensory motor volume	-0.046	-0.028	0.065	-0.006	0.080	0.036	-0.246	0.012	0.116	<u>-0.214 *</u>	0.084	0.705	0.796	0.181	<u>0.020 *</u>	0.493	0.105
Bilateral mean hippocampus volume	0.039	-0.049	-0.075	-0.094	-0.183	0.081	0.151	-0.156	<u>-0.186 *</u>	0.001	0.662	0.276	0.790	0.183	0.082	0.123	0.111
Bilateral total entorhinal cortex volume	0.042	-0.275	0.015	0.019	-0.123	0.108	0.049	-0.111	<u>-0.163 *</u>	0.104	0.631	0.130	0.544	0.019	0.112	0.118	0.040
Bilateral total cingulate volume	0.077	-0.099	-0.069	0.001	0.039	0.086	-0.187	-0.079	0.002	-0.153	0.748	0.469	0.320	0.993	0.516	0.383	0.088
Bilateral total lateral temporal lobe volume	0.018	-0.103	-0.080	0.048	0.085	0.165	-0.185	-0.045	-0.075	-0.103	0.268	0.526	0.474	0.027	0.200	0.260	0.041
Bilateral total temporal lobe volume	0.038	-0.172	-0.065	0.011	0.057	0.169	-0.173	-0.044	-0.087	-0.077	0.318	0.863	0.438	0.022	0.294	0.170	0.027
Bilateral total occipital lobe volume	0.087	0.163	-0.069	-0.020	-0.037	0.063	-0.101	0.006	0.102	-0.076	0.405	0.290	0.368	0.975	0.580	0.336	0.793
Bilateral total medial temporal lobe volume	0.094	-0.275	-0.064	-0.046	-0.025	0.106	-0.053	-0.044	-0.09	-0.032	0.811	0.324	0.533	0.065	0.740	0.154	0.122

Abbreviations: AD: Alzheimer's disease; BMI: Body mass index; CN: Cognitively normal; EMCI: Early mild cognitive impairment; EntCtx: Entorhinal cortex volume; FDR: False discovery rate; GlycA: Glycoprotein acetyls; LMCI: Late mild cognitive impairment; SMC: Significant memory concerns.

Supplementary Table S6. The sex- and diagnosis groups-specific correlation between plasma GlycA and regional brain volumes (volumes and thicknesses in the left/right hemispheres and the whole brain thicknesses). Spearman's rank order correlation was performed between the residual of GlycA (log2-transformed, adjusted medications, APOE4, age, BMI, and education, stratified by sex and diagnosis groups) and residuals of brain regional volumes (log2-transformed, adjusted intracranial volume (log2-transformed), magnet strength/scan type (Mag), APOE4, age, BMI, education, stratified by sex and diagnosis groups); the analysis was performed stratified by sex and diagnosis groups. In addition, linear regressions were performed to evaluate the GlycA-sex interaction stratified by diagnosis status, and GlycA-diagnosis status interaction stratified by sex. Results annotated underlined were significant ($p < 0.05$) and passed FDR correction of $q = 0.2$; other highlighted results were significant ($p < 0.05$) but did not passed FDR.

Measurement			Spearman rho (ρ)										p (interaction)						
			Male					Female					GlycA-sex interaction			GlycA-Diagnosis interaction			
			CN	SMC	EMCI	LMCI	AD	CN	SMC	EMCI	LMCI	AD	CN	SMC	EMCI	LMCI	AD	Male	Female
Right total frontal lobe volume	Right	Volume	0.039	-0.070	0.045	0.032	<u>0.228</u>	0.088	<u>-0.425</u>	-0.056	0.022	<u>-0.299</u>	0.445	0.263	0.511	0.650	<u>0.000</u>	0.371	<u>0.008</u>
Right cerebral cortex grey matter volume	Right	Volume	0.024	-0.079	-0.043	0.014	0.110	0.119	<u>-0.338</u>	-0.023	0.004	<u>-0.282</u>	0.314	0.528	0.588	0.626	<u>0.004</u>	0.457	<u>0.007</u>
Right mean grey matter volume	Right	Volume	0.018	-0.060	-0.031	0.014	0.112	0.122	<u>-0.328</u>	-0.024	0.003	<u>-0.277</u>	0.286	0.506	0.674	0.590	<u>0.003</u>	0.469	<u>0.011</u>
Right total parietal lobe volume	Right	Volume	-0.020	-0.048	-0.091	0.053	0.022	0.095	-0.206	0.038	0.009	<u>-0.234</u>	0.207	0.962	0.113	0.760	0.073	0.178	0.058
Right total sensory motor volume	Right	Volume	-0.070	-0.013	-0.002	-0.013	0.085	0.031	-0.227	-0.008	0.104	<u>-0.229</u>	0.074	0.649	0.815	0.148	<u>0.009</u>	0.415	0.067
Right total cingulate volume	Right	Volume	0.093	-0.027	-0.127	-0.019	0.032	0.063	0.063	-0.025	-0.024	-0.151	0.486	0.867	0.187	0.872	0.544	0.296	0.341
Right total lateral temporal lobe volume	Right	Volume	0.000	-0.017	0.013	0.027	0.085	<u>0.146</u>	-0.105	-0.046	-0.072	-0.096	0.224	0.543	0.921	0.274	0.156	0.841	0.099
Right total temporal lobe volume	Right	Volume	0.022	-0.124	-0.024	-0.003	0.049	<u>0.163</u>	-0.162	-0.030	-0.078	-0.095	0.236	0.743	0.814	0.209	0.256	0.608	0.051
Right total medial temporal lobe volume	Right	Volume	0.076	-0.246	-0.063	-0.043	-0.045	0.121	-0.130	0.006	-0.066	-0.065	0.549	0.612	0.426	0.208	0.752	0.229	0.104
Right total occipital lobe volume	Right	Volume	0.085	0.092	-0.079	-0.040	-0.051	0.057	-0.059	-0.002	0.114	-0.043	0.301	0.543	0.410	0.568	0.469	0.273	0.758
Right hippocampus volume	Right	Volume	0.031	0.039	-0.056	-0.081	-0.114	0.076	0.199	<u>-0.189</u>	<u>-0.181</u>	0.021	0.507	0.394	0.535	0.159	0.232	0.327	0.073
Right entorhinal cortex volume	Right	Volume	0.010	-0.303	-0.015	-0.003	-0.044	0.118	-0.045	-0.110	<u>-0.184</u>	0.052	0.253	0.368	0.641	<u>0.018</u>	0.272	0.240	<u>0.037</u>
Left total frontal lobe volume	Left	Volume	0.001	-0.029	-0.030	0.032	0.126	0.032	-0.210	-0.044	0.021	<u>-0.357</u>	0.499	0.429	0.939	0.446	<u>0.003</u>	0.748	0.091
Left cerebral cortex grey matter volume	Left	Volume	0.037	-0.056	-0.095	0.021	0.081	0.110	<u>-0.310</u>	-0.020	-0.015	<u>-0.235</u>	0.463	0.339	0.245	0.238	<u>0.036</u>	0.292	0.074
Left mean grey matter volume	Left	Volume	0.031	-0.030	-0.086	0.022	0.084	0.109	<u>-0.278</u>	-0.008	-0.017	<u>-0.234</u>	0.443	0.363	0.272	0.183	<u>0.036</u>	0.307	0.100
Left total parietal lobe volume	Left	Volume	0.004	0.048	<u>-0.172</u>	0.003	0.063	0.040	<u>-0.336</u>	0.053	0.026	<u>-0.195</u>	0.617	0.294	0.055	0.851	0.188	0.217	0.394
Left total sensory motor volume	Left	Volume	-0.032	-0.052	0.123	0.001	0.025	0.042	-0.179	0.036	0.120	-0.137	0.137	0.809	0.801	0.271	0.073	0.655	0.255
Left total lateral temporal lobe volume	Left	Volume	0.045	-0.115	-0.120	0.050	0.098	<u>0.171</u>	-0.225	-0.025	-0.068	-0.105	0.367	0.548	0.159	<u>0.003</u>	0.434	0.061	<u>0.017</u>
Left total temporal lobe volume	Left	Volume	0.060	-0.233	-0.103	0.011	0.059	<u>0.165</u>	-0.160	-0.050	-0.090	-0.074	0.465	0.981	0.220	<u>0.002</u>	0.498	0.057	<u>0.018</u>
Left total occipital lobe volume	Left	Volume	0.087	0.164	-0.028	-0.003	-0.005	0.060	-0.102	-0.008	0.061	-0.063	0.609	0.161	0.374	0.569	0.766	0.456	0.841
Left total cingulate volume	Left	Volume	0.012	-0.079	-0.013	0.030	0.024	0.091	<u>-0.394</u>	-0.089	0.031	-0.042	0.882	0.303	0.704	0.823	0.758	0.744	<u>0.018</u>
Left hippocampus volume	Left	Volume	0.050	-0.200	-0.072	-0.098	<u>-0.222</u>	0.064	0.102	-0.107	<u>-0.176</u>	-0.004	0.893	0.202	0.915	0.259	<u>0.048</u>	0.067	0.255
Left total medial temporal lobe volume	Left	Volume	0.088	-0.218	-0.050	-0.062	-0.003	0.077	0.033	-0.089	-0.101	0.003	0.845	0.213	0.716	<u>0.036</u>	0.754	0.294	0.217
Left entorhinal cortex volume	Left	Volume	0.085	-0.247	0.029	0.016	<u>-0.194</u>	0.033	0.165	-0.083	-0.099	0.151	0.750	0.063	0.517	0.063	0.091	0.117	0.194
bilateral mean frontal lobe thickness	Whole	Thickness	-0.043	0.160	-0.045	0.018	<u>0.188</u>	<u>-0.148</u>	-0.102	0.022	0.032	<u>-0.224</u>	0.437	0.515	0.867	0.690	<u>0.002</u>	0.426	0.147
bilateral mean parietal lobe thickness	Whole	Thickness	0.014	0.187	-0.143	0.080	<u>0.159</u>	-0.005	0.072	0.116	0.051	-0.140	0.995	0.463	<u>0.037</u>	0.792	<u>0.038</u>	0.157	0.668
bilateral mean grey matter thickness	Whole	Thickness	-0.026	0.061	-0.134	0.047	0.155	-0.075	-0.072	0.073	0.014	-0.137	0.731	0.682	0.130	0.793	<u>0.017</u>	0.231	0.504
bilateral mean occipital lobe thickness	Whole	Thickness	0.096	0.256	-0.136	0.007	0.134	0.036	<u>-0.266</u>	0.169	0.105	-0.103	0.573	<u>0.013</u>	<u>0.007</u>	0.166	0.064	<u>0.043</u>	0.061
bilateral mean lateral temporal lobe thickness	Whole	Thickness	-0.068	-0.025	<u>-0.199</u>	0.063	0.130	-0.054	0.001	0.100	-0.074	-0.085	0.896	0.782	<u>0.041</u>	0.069	0.143	<u>0.039</u>	0.786
bilateral mean sensory motor thickness	Whole	Thickness	-0.034	-0.021	-0.046	0.045	0.141	0.006	-0.106	0.018	<u>0.148</u>	-0.064	0.374	0.703	0.573	0.329	<u>0.037</u>	0.301	0.371
bilateral mean temporal lobe thickness	Whole	Thickness	-0.058	-0.062	<u>-0.181</u>	0.032	0.084	-0.059	0.007	0.088	-0.076	-0.058	0.989	0.525	0.068	0.084	0.275	0.086	0.783
bilateral mean medial temporal lobe thickness	Whole	Thickness	-0.024	-0.220	-0.135	-0.014	0.012	-0.059	-0.012	0.055	-0.080	-0.036	0.832	0.357	0.251	0.190	0.598	0.363	0.868
bilateral mean cingulate thickness	Whole	Thickness	-0.084	0.051	0.129	-0.017	-0.025	-0.089	-0.208	-0.027	0.033	-0.012	0.827	0.717	0.099	0.251	0.528	0.473	0.617
bilateral mean entorhinal cortex thickness	Whole	Thickness	0.027	<u>-0.416</u>	-0.056	0.037	<u>-0.052</u>	-0.070	0.007	-0.038	-0.141	0.050	0.312	0.113	0.943	<u>0.014</u>	0.332	0.164	0.451
Right mean frontal lobe thickness	Right	Thickness	-0.014	0.165	0.005	-0.010	<u>0.247</u>	<u>-0.146</u>	-0.041	-0.021	0.031	<u>-0.244</u>	0.490	0.615	0.404	0.608	<u>0.000</u>	0.147	0.128
Right mean cingulate thickness	Right	Thickness	-0.022	0.021	0.082	-0.112	-0.038	-0.071	0.125	-0.034	0.062	<u>-0.226</u>	0.517	0.533	0.171	<u>0.023</u>	<u>0.034</u>	0.304	<u>0.000</u>
Right mean grey matter thickness	Right	Thickness	-0.018	0.090	-0.097	0.033	<u>0.172</u>	-0.075	-0.019	0.066	0.014	-0.157	0.693	0.754	0.230	0.992	<u>0.008</u>	0.315	0.284
Right mean parietal lobe thickness	Right	Thickness	0.005	0.118	-0.122	0.071	0.130	0.000	0.071	0.068	0.035	-0.144	0.708	0.592	<u>0.042</u>	0.789	<u>0.033</u>	0.222	0.423
Right mean occipital lobe thickness	Right	Thickness	0.114	0.275	-0.111	0.030	0.100	0.033	-0.240	0.162	0.131	-0.114	0.378	<u>0.020</u>	<u>0.013</u>	0.112	<u>0.046</u>	0.052	<u>0.049</u>
Right mean sensory motor thickness	Right	Thickness	-0.048	-0.046	-0.033	0.047	0.152	-0.002	-0.148	0.018	0.119	-0.104	0.457	0.834	0.636	0.443	<u>0.016</u>	0.361	0.319
Right mean lateral temporal lobe thickness	Right	Thickness	-0.029	0.061	-0.124	0.073	0.120	-0.044	0.075	0.082	-0.070	-0.061	0.991	0.711	0.276	0.235	0.174	0.177	0.929
Right mean temporal lobe thickness	Right	Thickness	-0.042	-0.069	-0.106	0.050	0.094	-0.054	0.070	0.101	-0.089	-0.051	0.971	0.408	0.301	0.263	0.225	0.240	0.874
Right mean medial temporal lobe thickness	Right	Thickness	-0.050	-0.225	-0.101	-0.004	0.064	-0.047	0.102	0.086	-0.101	-0.049	0.918	0.216	0.541	0.445	0.299	0.504	0.776
Right entorhinal cortex thickness	Right	Thickness	0.027	<u>-0.420</u>	-0.014	0.020	-0.001	-0.069	0.084	0.024	-0.107	-0.009	0.329	0.070	0.956	0.095	0.996	0.327	0.955
Left mean frontal lobe thickness	Left	Thickness	-0.056	0.100	-0.088	0.046	0.114	<u>-0.146</u>	-0.203	0.045	0.041	<u>-0.189</u>	0.431	0.445	0.614	0.776	<u>0.023</u>	0.656	0.210
Left mean parietal lobe thickness	Left	Thickness	0.024	0.172	-0.140	0.078	<u>0.165</u>	-0.020	0.045	0.127	0.073	-0.121	0.707	0.375	<u>0.045</u>	0.795	0.074	0.146	0.882

Left mean lateral temporal lobe thickness	Left	Thickness	-0.098	-0.102	-0.245	0.042	0.107	-0.041	-0.037	0.107	-0.050	-0.097	0.817	0.879	0.009	0.016	0.254	0.021	0.549
Left mean grey matter thickness	Left	Thickness	-0.029	-0.002	-0.158	0.049	0.122	-0.068	-0.088	0.072	0.009	-0.095	0.773	0.629	0.080	0.570	0.063	0.176	0.779
Left mean occipital lobe thickness	Left	Thickness	0.077	0.213	-0.140	-0.030	0.145	0.033	-0.251	0.162	0.067	-0.072	0.897	0.017	0.007	0.366	0.165	0.080	0.170
Left mean temporal lobe thickness	Left	Thickness	-0.072	-0.142	-0.218	0.008	0.064	-0.050	-0.012	0.080	-0.061	-0.056	0.932	0.686	0.019	0.022	0.479	0.058	0.548
Left mean cingulate thickness	Left	Thickness	-0.062	0.179	0.082	0.006	-0.062	-0.100	0.075	-0.014	-0.021	-0.052	0.853	0.730	0.298	0.924	0.450	0.743	0.169
Left mean medial temporal lobe thickness	Left	Thickness	-0.001	-0.138	-0.161	-0.035	-0.022	-0.045	-0.109	-0.002	-0.064	-0.002	0.588	0.670	0.138	0.088	0.994	0.354	0.693
Left mean sensory motor thickness	Left	Thickness	-0.019	0.008	-0.060	0.038	0.127	0.016	-0.063	0.010	0.165	0.000	0.333	0.622	0.552	0.253	0.098	0.291	0.441
Left entorhinal cortex thickness	Left	Thickness	0.038	-0.303	-0.056	0.031	-0.135	-0.064	-0.020	-0.121	-0.145	0.139	0.469	0.326	0.976	0.004	0.079	0.119	0.068

Abbreviations: AD: Alzheimer's disease; BMI: Body mass index; CN: Cognitively normal; EMCI: Early mild cognitive impairment; FDR: False discovery rate; GlycA: Glycoprotein acetyls; LMCI: Late mild cognitive impairment; SMC: Significant memory concerns.

Supplementary Table S7. The MRI regional brain volumes in all participants. The original numbers of mean \pm standard deviation were reported for each brain measurements. Comparing different diagnosis status within the same measurements, the level sharing the same letters from A-D indicate no significant differences. The significance difference level among different diagnosis status was determined using the Tukey HSD test, using data that were log₂-transformed and adjusted for APOE4, sex, age, BMI, education, magnet strength/scan type, and intracranial volume (log₂ transformed).

Brain Volumes	CN (n=361)		SMC (n=95)		EMCI (n=279)		LMCI (n=479)		AD (n=285)	
Bilateral total entorhinal cortex volume	4056.2 \pm 689.3	A	4142.5 \pm 679.6	AB	4042.3 \pm 809.6	B	3667.9 \pm 875.3	C	3149 \pm 815	D
Bilateral mean hippocampus volume	3648.7 \pm 428.8	A	3827.9 \pm 480.3	A	3684.1 \pm 455.8	B	3266.7 \pm 502.1	C	3020.6 \pm 485	D
Bilateral total lateral temporal lobe volume	66659.3 \pm 7460.3	A	69340 \pm 7428	AB	68560.6 \pm 7975.8	B	63181.8 \pm 7939.4	C	58799.2 \pm 8793.4	D
Bilateral total medial temporal lobe volume	30015.5 \pm 3061.1	A	30834.6 \pm 2987.1	AB	30613 \pm 3649.9	B	28408.9 \pm 3593.9	C	26215.8 \pm 3810.1	D
Bilateral total temporal lobe volume	96674.8 \pm 9822.2	A	100174.6 \pm 9559.8	AB	99173.6 \pm 10920.9	B	91590.7 \pm 10937.4	C	85015 \pm 12025.5	D
Bilateral total cingulate volume	17297.9 \pm 1984.9	A	18348.8 \pm 2683.8	A	18086.5 \pm 2360.5	AB	17047 \pm 2223.2	B	16681 \pm 2481.5	C
Total cerebral cortex grey matter volume	411173.2 \pm 39284.3	A	428775.2 \pm 36155.2	A	430354.9 \pm 43743.3	A	399974.9 \pm 42677.5	B	385020.9 \pm 45453.2	C
Bilateral total frontal lobe volume	126440.3 \pm 12621.1	A	130771.9 \pm 12795.5	AB	131424 \pm 13783.6	A	123914.3 \pm 13774.5	B	121325.8 \pm 14810.8	C
Bilateral mean grey matter volume	394647 \pm 37904.3	A	411165.9 \pm 34739.1	A	413070.2 \pm 41868.8	A	383985.8 \pm 40965.9	B	369522.4 \pm 43814.9	C
Bilateral total parietal lobe volume	78914.4 \pm 8676.4	A	82533.3 \pm 7753.5	AB	83412.8 \pm 9868.5	A	76553.2 \pm 9798.1	B	72937.7 \pm 10477.4	C
Bilateral total sensory motor volume	45554.7 \pm 5211.3	A	48050.3 \pm 4807.9	AB	48822.5 \pm 5858.2	A	44939.1 \pm 5592.7	AB	44649.1 \pm 5880.7	B
Bilateral total occipital lobe volume	42666.3 \pm 5434.8	A	45359.6 \pm 5280	A	45858.8 \pm 6133	A	42700.5 \pm 5699.5	A	41479.5 \pm 5934.9	B

Abbreviations: AD: Alzheimer's disease; BMI: Body mass index; CN: Cognitively normal; EMCI: Early mild cognitive impairment; LMCI: Late mild cognitive impairment; MRI: Magnetic resonance imaging; SMC: Significant memory concerns.

Supplementary Table S8. Plasma GlycA was not correlated with CSF A/T/N biomarkers at baseline.

Spearman's rank order correlation was performed between log2-transformed A/T/N biomarkers in CSF and GlycA (log2-normalized, medication adjusted), controlling for age, BMI, APOE4, and education level, stratified by diagnosis and sex.

A/T/N Biomarkers	Spearman rho									
	Male					Female				
	CN	SMC	EMCI	LMCI	AD	CN	SMC	EMCI	LMCI	AD
CSF_Abeta42	0.151	-0.090	0.042	0.038	-0.002	-0.016	0.038	-0.084	-0.074	0.161
CSF_PTau	0.009	-0.159	0.092	-0.093	0.001	0.041	-0.236	-0.047	0.108	0.151
CSF_PTau/Ab42	-0.118	0.007	0.002	-0.092	0.015	0.037	-0.104	0.069	0.104	-0.028
CSF_Tau	0.075	-0.159	0.124	-0.087	0.003	0.031	-0.175	-0.023	0.079	0.123
CSF_Tau/Ab42	-0.088	0.012	0.021	-0.081	0.001	0.024	-0.080	0.084	0.090	-0.050

Abbreviations: AD: Alzheimer's disease; A/T/N: Amyloid/Tau/Neurodegeneration; BMI: Body mass index; CN: Cognitively normal; CSF: cerebrospinal fluid; EMCI: Early mild cognitive impairment; GlycA: Glycoprotein acetyls; LMCI: Late mild cognitive impairment; SMC: Significant memory concerns.

Supplementary Table S9. Baseline GlycA level was not associated with A/T/N biomarkers in CSF in the continuous follow-up years in participants regardless of their diagnosis at baseline.

Parameters	Year	p-value					Spearman rho (ρ)				
		CN	SMC	EMCI	LMCI	AD	CN	SMC	EMCI	LMCI	AD
CSF_Abeta42	1	0.765	NA	NA	0.706	0.209	0.036	NA	NA	0.033	-0.164
	2	0.567	0.311	0.981	0.735	0.820	-0.059	0.162	0.002	0.032	0.047
	3	0.367	NA	0.667	0.336	0.667	-0.168	NA	0.500	0.156	0.500
	4	0.709	0.446	0.727	0.670	NA	-0.050	0.222	0.054	-0.062	NA
	5	0.453	NA	NA	0.626	NA	-0.169	NA	1.000	0.128	NA
	6	0.033	NA	0.653	0.630	NA	-0.390	NA	-0.118	-0.112	NA
	7	0.209	NA	0.289	0.600	NA	-0.374	NA	0.429	-0.400	NA
	8	0.600	NA	NA	NA	NA	0.400	NA	-1.000	-1.000	NA
	9	0.102	NA	NA	0.800	NA	-0.619	NA	NA	-0.200	NA
	10	NA	NA	NA	NA	NA	1.000	NA	NA	NA	NA
	11	0.531	NA	NA	NA	NA	-0.262	NA	NA	NA	NA
	12	NA	NA	NA	NA	NA	NA	NA	NA	NA	NA
	13	NA	NA	NA	NA	NA	NA	NA	NA	NA	NA
CSF_pTau	1	0.608	NA	NA	0.859	0.207	0.063	NA	NA	-0.016	0.167
	2	0.682	0.104	0.319	0.261	0.885	0.043	-0.257	0.098	-0.107	-0.030
	3	0.535	NA	0.667	0.331	0.667	0.120	NA	-0.500	-0.158	-0.500
	4	0.936	0.095	0.765	0.753	NA	-0.011	-0.464	0.047	0.046	NA
	5	0.789	NA	NA	0.071	NA	0.060	NA	-1.000	-0.449	NA
	6	0.050	NA	0.888	0.767	NA	0.361	NA	0.038	-0.069	NA
	7	0.649	NA	0.160	0.400	NA	-0.147	NA	-0.548	0.600	NA
	8	0.800	NA	NA	NA	NA	-0.200	NA	1.000	-1.000	NA
	9	0.015	NA	NA	0.800	NA	0.810	NA	NA	-0.200	NA
	10	NA	NA	NA	NA	NA	-1.000	NA	NA	NA	NA
	11	0.955	NA	NA	NA	NA	-0.024	NA	NA	NA	NA
	12	NA	NA	NA	NA	NA	NA	NA	NA	NA	NA
	13	NA	NA	NA	NA	NA	NA	NA	NA	NA	NA
CSF_Tau/ab42	1	0.580	NA	NA	0.650	0.117	0.068	NA	NA	-0.040	0.206
	2	0.633	0.062	0.591	0.809	0.452	0.050	-0.294	0.053	-0.023	-0.154
	3	0.438	NA	0.667	0.620	0.667	0.150	NA	-0.500	-0.081	-0.500
	4	0.859	0.267	0.914	0.553	NA	0.024	-0.319	0.017	0.087	NA
	5	0.536	NA	0.200	0.260	NA	0.140	NA	-0.800	-0.289	NA
	6	0.069	NA	0.105	0.658	NA	0.337	NA	0.407	0.103	NA

	7	0.957	NA	0.456	0.400	NA	-0.017	NA	-0.310	0.600	NA
	8	0.800	NA	NA	NA	NA	-0.200	NA	1.000	-1.000	NA
	9	0.021	NA	NA	0.800	NA	0.786	NA	NA	-0.200	NA
	10	NA	NA	NA	NA	NA	-1.000	NA	NA	NA	NA
	11	0.955	NA	NA	NA	NA	-0.024	NA	NA	NA	NA
	12	NA	NA	NA	NA	NA	NA	NA	NA	NA	NA
	13	NA	NA	NA	NA	NA	NA	NA	NA	NA	NA
CSF_pTau	1	0.769	NA	NA	0.724	0.677	-0.035	NA	NA	-0.031	0.055
	2	0.951	0.751	0.388	0.856	0.933	-0.006	-0.051	0.085	-0.017	0.017
	3	0.658	NA	NA	0.865	0.667	-0.083	NA	1.000	-0.028	-0.500
	4	0.693	0.091	0.119	0.926	NA	-0.053	-0.468	0.241	-0.014	NA
	5	0.232	NA	0.400	0.026	NA	-0.266	NA	-0.600	-0.537	NA
	6	0.701	NA	0.339	0.284	NA	0.073	NA	-0.256	-0.246	NA
	7	0.957	NA	0.071	0.600	NA	0.017	NA	-0.667	-0.400	NA
	8	0.800	NA	NA	NA	NA	-0.200	NA	1.000	-1.000	NA
	9	0.823	NA	NA	0.600	NA	-0.095	NA	NA	-0.400	NA
	10	NA	NA	NA	NA	NA	-1.000	NA	NA	NA	NA
	11	0.420	NA	NA	NA	NA	-0.333	NA	NA	NA	NA
	12	NA	NA	NA	NA	NA	NA	NA	NA	NA	NA
	13	NA	NA	NA	NA	NA	NA	NA	NA	NA	NA
CSF_Tau	1	0.922	NA	NA	0.949	0.534	0.012	NA	NA	0.006	0.082
	2	0.972	0.548	0.577	0.678	0.988	0.004	-0.097	0.055	0.039	-0.003
	3	0.855	NA	NA	0.888	0.667	-0.034	NA	1.000	0.023	-0.500
	4	0.829	0.274	0.164	0.602	NA	0.029	-0.314	0.216	-0.076	NA
	5	0.306	NA	1.000	0.209	NA	-0.229	NA	NA	-0.321	NA
	6	0.910	NA	0.338	0.695	NA	0.022	NA	0.248	-0.091	NA
	7	0.957	NA	0.183	0.200	NA	0.017	NA	-0.524	0.800	NA
	8	0.600	NA	NA	NA	NA	0.400	NA	1.000	-1.000	NA
	9	0.570	NA	NA	0.800	NA	-0.238	NA	NA	-0.200	NA
	10	0.667	NA	NA	NA	NA	-0.500	NA	NA	NA	NA
	11	0.260	NA	NA	NA	NA	-0.452	NA	NA	NA	NA
	12	NA	NA	NA	NA	NA	NA	NA	NA	NA	NA
	13	NA	NA	NA	NA	NA	NA	NA	NA	NA	NA

Abbreviations: AD: Alzheimer's disease; CN: Cognitively normal; CSF: cerebrospinal fluid; EMCI: Early mild cognitive impairment; GlycA: Glycoprotein acetyls; LMCI: Late mild cognitive impairment; SMC: Significant memory concerns.