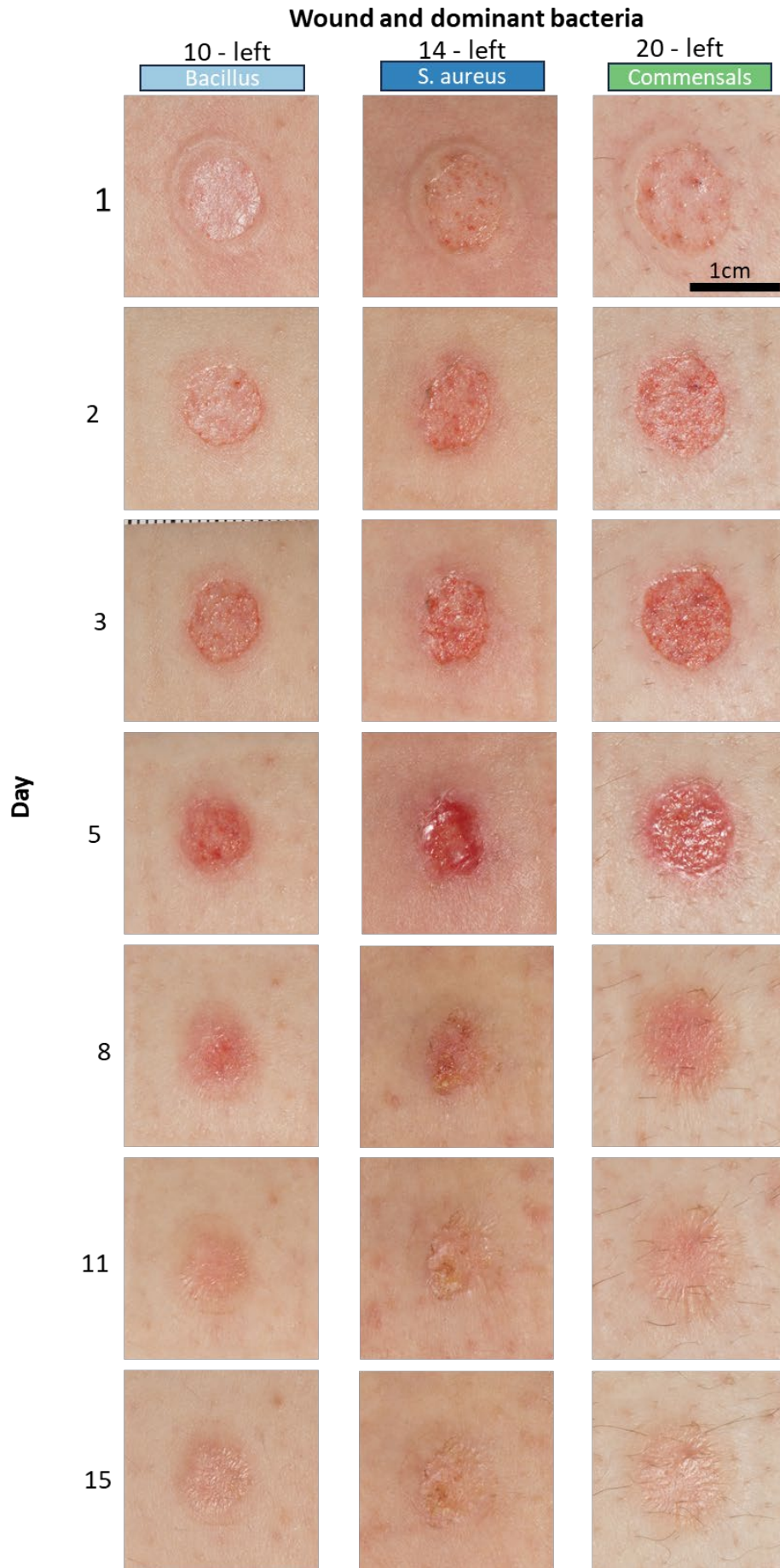


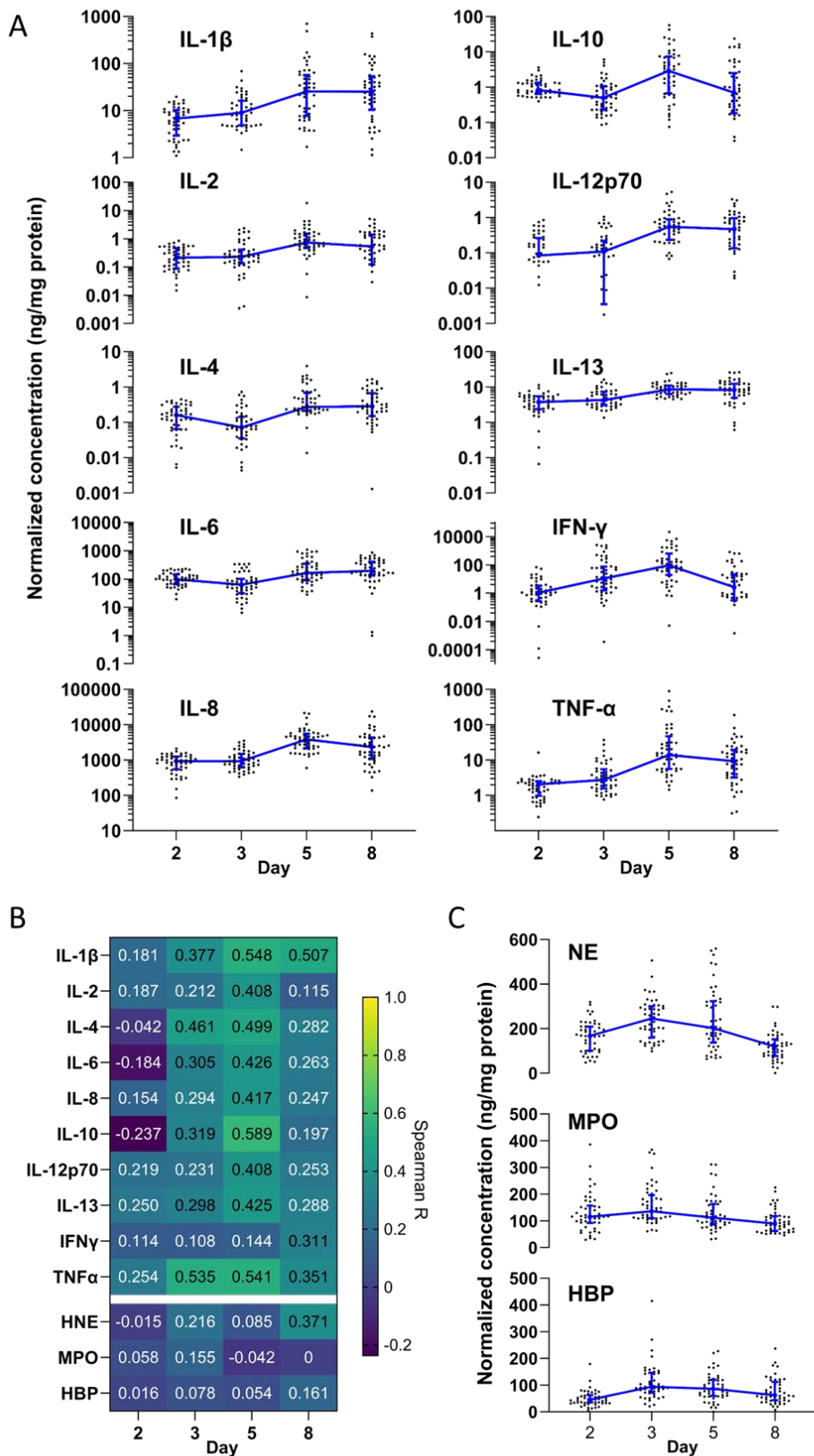
Supplemental table 1. Median bacterial levels in swab and dressing fluid samples per day.

IQR = interquartile range, CI = confidence interval

	Total CFU (median)	IQR	95% CI	CFU/mL (median)	CFU/cm² (median)
<i>Swab</i>					
Day 1	0	0 – 0	0 – 0	0	0
Day 2	2871	56 – 13208	325 – 6667	5742	7460
Day 3	99167	9438 – 610417	24250 – 349167	198334	257680
Day 5	1054167	302083 – 3095834	633333 – 1633333	2108334	2739198
Day 8	1683334	381250 – 6083334	1033333 – 2650000	3366667	4374055
Day 11	1266667	445833 – 2787500	675000 – 2258333	2533333	3291367
<i>Dressing fluid</i>					
Day 2	19312	6059 – 61730	9357 – 32949	8334	1042
Day 3	1376674	314503 – 4283475	525549 – 3208660	601667	75208
Day 5	20919514	4262095 – 44895112	11002813 – 33066067	9583333	1197917
Day 8	15667359	5275483 – 33595317	7727250 – 24064900	7583333	947917
Day 11	1430953	580890 – 3176400	854608 – 2172555	691667	86458



Supplemental figure 1. Images of three wounds taken over time that had different dominant bacterial strains detected by MALDI-TOF MS (left: *Bacillus* sp.; middle: *S. aureus*; right: various commensals).



Supplemental figure 2. A) Levels of each cytokine measured in dressing fluid over time normalized for protein content. Each data point is the wound fluid cytokine concentration in a single wound, while the blue line is the median of all wounds that day (n=48), and whiskers are the interquartile range. B) Spearman correlation coefficients comparing normalized (for protein content) levels of each cytokine and neutrophil protein with bacterial counts in swabs. C) Levels of three neutrophil proteins measured in dressing fluid over time normalized for protein content. Each data point is the wound fluid concentration in a single wound, while the blue line is the median of all wounds that day (n=48), and whiskers are the interquartile range.