

MANUSCRIPT TITLE

Impact of COVID-19 on mental illness in vaccinated and unvaccinated people: a population-based cohort study in OpenSAFELY

CONTENTS

<i>Supplementary methods</i>	4
Absolute excess risk	4
Information governance	4
<i>Supplementary Tables</i>	5
Supplementary Table 1: Summary of covariate definitions.....	5
Supplementary Table 2: Summary of cohort characteristics.....	7
Supplementary Table 3: Medical history of people in the pre-vaccination, vaccinated and unvaccinated cohorts.....	9
Supplementary Table 4: Maximally adjusted hazard ratios and 95% CIs for mental illness events following hospitalised COVID-19 in the pre-vaccination, vaccinated and unvaccinated cohorts.....	10
Supplementary Table 5: Maximally adjusted hazard ratios and 95% CIs for mental illness events following non-hospitalised COVID-19 in the pre-vaccination, vaccinated and unvaccinated cohorts.....	11
Supplementary Table 6: Maximally adjusted hazard ratios and 95% CIs for mental illness events following diagnosis of COVID-19 in the pre-vaccination, vaccinated and unvaccinated cohorts, in people with no prior history of the event.....	12
Supplementary Table 7: Maximally adjusted hazard ratios and 95% CIs for mental illness events following diagnosis of COVID-19 in the pre-vaccination, vaccinated and unvaccinated cohorts, in people with prior history of event, more than six months ago.....	12
Supplementary Table 8: Maximally adjusted hazard ratios and 95% CIs for mental illness events following diagnosis of COVID-19 in the pre-vaccination, vaccinated and unvaccinated cohorts, in people with prior history of event, within six months.....	12
Supplementary Table 9: Maximally adjusted hazard ratios and 95% CIs for mental illness events following diagnosis of COVID-19 in the pre-vaccination, vaccinated and unvaccinated cohorts, in people with history of COVID-19.....	13
Supplementary Table 10: Maximally adjusted hazard ratios and 95% CIs for mental illness events following diagnosis of COVID-19 in the pre-vaccination, vaccinated and unvaccinated cohorts for age group 18-39.....	13
Supplementary Table 11: Maximally adjusted hazard ratios and 95% CIs for mental illness events following diagnosis of COVID-19 in the pre-vaccination, vaccinated and unvaccinated cohorts for age group 40-59.....	13
Supplementary Table 12: Maximally adjusted hazard ratios and 95% CIs for mental illness events following diagnosis of COVID-19 in the pre-vaccination, vaccinated and unvaccinated cohorts for age group 60-79.....	14
Supplementary Table 13: Maximally adjusted hazard ratios and 95% CIs for mental illness events following diagnosis of COVID-19 in the pre-vaccination, vaccinated and unvaccinated cohorts for age group 80-110.....	14
Supplementary Table 14: Maximally adjusted hazard ratios and 95% CIs for mental illness events following diagnosis of COVID-19 in the pre-vaccination, vaccinated and unvaccinated cohorts for women.....	14
Supplementary Table 15: Maximally adjusted hazard ratios and 95% CIs for mental illness events following diagnosis of COVID-19 in the pre-vaccination, vaccinated and unvaccinated cohorts for men.....	15
Supplementary Table 16: Maximally adjusted hazard ratios and 95% CIs for mental illness events following diagnosis of COVID-19 in the pre-vaccination, vaccinated and unvaccinated cohorts for White ethnicity.....	15
Supplementary Table 17: Maximally adjusted hazard ratios and 95% CIs for mental illness events following diagnosis of COVID-19 in the pre-vaccination, vaccinated and unvaccinated cohorts for South Asian ethnicity.....	15
Supplementary Table 18: Maximally adjusted hazard ratios and 95% CIs for mental illness events following diagnosis of COVID-19 in the pre-vaccination, vaccinated and unvaccinated cohorts for Black ethnicity.....	16

Supplementary Table 19: Maximally adjusted hazard ratios and 95% CIs for mental illness events following diagnosis of COVID-19 in the pre-vaccination, vaccinated and unvaccinated cohorts for Other ethnicity.	16
Supplementary Table 20: Maximally adjusted hazard ratios and 95% CIs for mental illness events following diagnosis of COVID-19 in the pre-vaccination, vaccinated and unvaccinated cohorts for Mixed ethnicity.....	16
Supplementary Table 21: Excess events per 100,000 people at 28 weeks post-COVID-19 in the pre-vaccination, vaccinated and unvaccinated cohorts.....	17
<i>Supplementary Figures</i>	18
Supplementary Figure 1: COVID-19 cases over time	18
Supplementary Figure 2: Diagram showing cohort construction.....	19
Supplementary Figure 3: Maximally and minimally adjusted hazard ratios and 95% CIs for mental illness events following diagnosis of COVID-19 in the pre-vaccination, vaccinated and unvaccinated cohorts. Events on the day of COVID-19 diagnosis (day 0) were excluded.....	20
Supplementary Figure 4: Maximally adjusted hazard ratios and 95% CIs for depression and serious mental illness following diagnosis of COVID-19 in the vaccinated and unvaccinated cohorts, by history of COVID-19. Events on the day of COVID-19 diagnosis (day 0) were excluded.....	21
Supplementary Figure 5: Maximally adjusted hazard ratios and 95% CIs for depression and serious mental illness following diagnosis of COVID-19 in the pre-vaccination, vaccinated and unvaccinated cohorts, by age group. Events on the day of COVID-19 diagnosis (day 0) were excluded.	22
Supplementary Figure 6: Maximally adjusted hazard ratios and 95% CIs for depression and serious mental illness following diagnosis of COVID-19 in the pre-vaccination, vaccinated and unvaccinated cohorts, by sex. Events on the day of COVID-19 diagnosis (day 0) were excluded.....	23
Supplementary Figure 7: Maximally adjusted hazard ratios and 95% CIs for depression and serious mental illness following diagnosis of COVID-19 in the pre-vaccination, vaccinated and unvaccinated cohorts, by ethnicity. Events on the day of COVID-19 diagnosis (day 0) were excluded.	24

SUPPLEMENTARY METHODS

Absolute excess risk

The absolute excess risk analysis was performed for each outcome in each cohort using the hazard ratio from the main analysis. To compare the outcomes across the cohorts, each of which have different lengths of follow-up, we calculated the absolute excess risk at 28 weeks. We accounted for age and sex in the analysis by using event counts and person days from eight subgroups defined by age and sex. They were females, aged 18-39; females, aged 40-59; females, aged 60-79; females, aged 80-110; males, aged 18-39; males, aged 40-59; males, aged 60-79; and males, aged 80-110). For each group, we calculated the average daily incidence of the outcome in the unexposed and the cumulative risk over time. We then used the relevant hazard ratio for that day (e.g., days 0 to 27 will have the coefficient for the term 'days0_28', while days 28 to 196 will have the coefficient for the term 'days28_197') to predict the expected cumulative survival in the exposed. Finally, we calculated the daily excess risk as the difference in cumulative survival for the unexposed and the expected cumulative survival in the exposed. The overall absolute excess risk was estimated using a weighted sum of the excess risks in each group, weighted by the proportions of individuals in age and sex strata in the pre-vaccination cohort.

Information governance

NHS England is the data controller of the NHS England OpenSAFELY COVID-19 Service; TPP is the data processor; all study authors using OpenSAFELY have the approval of NHS England. This implementation of OpenSAFELY is hosted within the TPP environment which is accredited to the ISO 27001 information security standard and is NHS IG Toolkit compliant.

Patient data has been pseudonymised for analysis and linkage using industry standard cryptographic hashing techniques; all pseudonymised datasets transmitted for linkage onto OpenSAFELY are encrypted; access to the NHS England OpenSAFELY COVID-19 service is via a virtual private network (VPN) connection; the researchers hold contracts with NHS England and only access the platform to initiate database queries and statistical models; all database activity is logged; only aggregate statistical outputs leave the platform environment following best practice for anonymisation of results such as statistical disclosure control for low cell counts.

The service adheres to the obligations of the UK General Data Protection Regulation (UK GDPR) and the Data Protection Act 2018. The service previously operated under notices initially issued in February 2020 by the the Secretary of State under Regulation 3(4) of the Health Service (Control of Patient Information) Regulations 2002 (COPI Regulations), which required organisations to process confidential patient information for COVID-19 purposes; this set aside the requirement for patient consent. As of 1 July 2023, the Secretary of State has requested that NHS England continue to operate the Service under the COVID-19 Directions 2020. In some cases of data sharing, the common law duty of confidence is met using, for example, patient consent or support from the Health Research Authority Confidentiality Advisory Group.

Taken together, these provide the legal bases to link patient datasets using the service. GP practices, which provide access to the primary care data, are required to share relevant health information to support the public health response to the pandemic, and have been informed of how the service operates.

This study was approved by the Health Research Authority [REC reference 22/PR/0095] and by the University of Bristol's Faculty of Health Sciences Ethics Committee [reference 117269].

SUPPLEMENTARY TABLES

Supplementary Table 1: Summary of covariate definitions.

Covariate	Type	Definition
Age	Continuous	Modelled as age in years using a restricted cubic spline with three knots at the 10th, 50th and 90th percentiles
Sex	Categorical	Male, Female
Ethnicity	Categorical	1: White 2: Mixed 3: South Asian 4: Black 5: Other Missing
Deprivation	Categorical	10 categories from Index of Multiple Deprivation 2019
Region	Categorical	East of England London Midlands North East and Yorkshire North West South East South West Scotland Wales
Smoking status	Categorical	E: Ever smoker M: Missing N: Never smoker S: Current smoker
Care home status	Binary	1 if care home resident; 0 otherwise
Consultation rate	Continuous	Number of GP consultations in 2019
Health care worker	Binary	1 if healthcare worker; 0 otherwise
Dementia	Binary	1 if diagnosis present; 0 otherwise
Liver disease	Binary	1 if diagnosis present; 0 otherwise
Chronic kidney disease	Binary	1 if diagnosis present; 0 otherwise
Cancer	Categorical	1 if diagnosis present; 0 otherwise
Hypertension	Binary	1 if diagnosis present; 0 otherwise
Diabetes	Binary	1 if diagnosis present; 0 otherwise
Obesity	Binary	1 if BMI \geq 30 or coded diagnosis for obesity; 0 otherwise

Chronic obstructive pulmonary disease (COPD)	Binary	1 if diagnosis present; 0 otherwise
Acute myocardial infarction	Binary	1 if diagnosis present; 0 otherwise
Ischaemic stroke	Binary	1 if diagnosis present; 0 otherwise
Recent episode of depression	Binary	1 if present ≤6 months prior to index date; 0 otherwise
History of depression	Binary	1 if present >6 months prior to index data; 0 otherwise
Recent episode of anxiety	Binary	1 if present ≤6 months prior to index date; 0 otherwise
History of anxiety	Binary	1 if present >6 months prior to index date; 0 otherwise
Recent diagnosis of an eating disorder	Binary	1 if present ≤6 months prior to index date; 0 otherwise
History of eating disorders	Binary	1 if present >6 months prior to index date; 0 otherwise
Recent report of a serious mental illness	Binary	1 if present ≤6 months prior to index date; 0 otherwise
History of serious mental illness	Binary	1 if present >6 months prior to index date; 0 otherwise
Recent report of self-harm	Binary	1 if present ≤6 months prior to index date; 0 otherwise
History of self-harm	Binary	1 if present >6 months prior to index date; 0 otherwise

Supplementary Table 2: Summary of cohort characteristics.

Characteristic	Pre-vaccination cohort	Vaccinated cohort	Unvaccinated cohort
Start date	01/01/2020, which is the approximate start date of the pandemic in the UK.	01/06/2021, which is the date that the delta variant was thought to be ubiquitous in England.	01/06/2021, which is the date that the delta variant was thought to be ubiquitous in England.
End date - exposure	18/06/2021, which is the date when the Joint Committee for Vaccination and Immunisation (JCVI) phase 2, group 12 (all adults aged 18 years and older) become eligible for a COVID-19 vaccination.	14/12/2021, which is the day that the UK Health Security Agency stated that over half of English cases they sampled have S Gene Target Failure, meaning they were likely Omicron, in this report .	14/12/2021, which is the day that the UK Health Security Agency stated that over half of English cases they sampled have S Gene Target Failure, meaning they were likely Omicron, in this report .
End date - outcome	14/12/2021, which is the day that the UK Health Security Agency stated that over half of English cases they sampled have S Gene Target Failure, meaning they were likely Omicron, in this report .	14/12/2021, which is the day that the UK Health Security Agency stated that over half of English cases they sampled have S Gene Target Failure, meaning they were likely Omicron, in this report .	14/12/2021, which is the day that the UK Health Security Agency stated that over half of English cases they sampled have S Gene Target Failure, meaning they were likely Omicron, in this report .
Exclusion criteria	<p>Patients will be excluded if they meet any of the following criteria: COVID-19 diagnosis recorded prior to their index date</p>	<p>Patients will be excluded if they meet any of the following criteria: COVID-19 diagnosis recorded prior to their index date [Note: these individuals are required for a sensitivity analysis and so should not be removed at the data extraction stage] They do not have a record of two vaccination doses prior to the study end date They received a vaccination prior to 08-12-2020 (i.e., the start of the vaccination program) They received a second dose vaccination before their first dose vaccination They received a second dose vaccination less than three weeks after their first dose They received mixed vaccine products before 07-05-2021</p>	<p>Patients will be excluded if they meet any of the following criteria: COVID-19 diagnosis recorded prior to their index date [Note: these individuals are required for a sensitivity analysis and so should not be removed at the data extraction stage] They have a record of one or more vaccination doses prior to their index date They could not be assigned to a vaccination group as defined by the Joint Committee on Vaccination and Immunisation (JCVI)</p>
Follow-up start	Study start date.	Follow-up will start at the latest of the following dates (i.e., an individual's index date): Two	Follow-up will start at the latest of the following dates (i.e., an individual's index date):

		weeks after their second vaccination; Study start date.	12 weeks after they became eligible for vaccination; Study start date.
Follow-up end for exposure	Follow-up will end at the earliest of the following dates: Death; Outcome event; Study end date exposure; Deregistration date; Vaccination; Date when eligible for vaccination according to JCVI priority groupings.	Follow-up will end at the earliest of the following dates: Death; Outcome event; Study end date exposure; Deregistration date.	Follow-up will end at the earliest of the following dates: Death; Outcome event; Study end date exposure; Deregistration date; Vaccination.
Follow-up end for outcomes	Follow-up will end at the earliest of the following dates: Death; Outcome event; Study end date outcome; Deregistration date.	Follow-up will end at the earliest of the following dates: Death; Outcome event; Study end date outcome; Deregistration date.	Follow-up will end at the earliest of the following dates: Death; Outcome event; Study end date outcome; Deregistration date.
Cox regression time periods	[0,28), [28,197), [197, 365), [365,714)	[0,28), [28,197)	[0,28), [28,197)

Supplementary Table 3: Medical history of people in the pre-vaccination, vaccinated and unvaccinated cohorts.

Characteristic		Pre-vaccination cohort		Vaccinated cohort		Unvaccinated cohort	
		N (%)	COVID-19 diagnoses	N (%)	COVID-19 diagnoses	N (%)	COVID-19 diagnoses
All		17619987	975429	13716225	850023	3130581	147315
GP visits in 2019	0	4738383 (26.9%)	209559	3301473 (24.1%)	190449	1685847 (53.9%)	45657
	1-5	6527133 (37%)	383793	5262447 (38.4%)	344607	865647 (27.7%)	55965
	6+	6354465 (36.1%)	382071	5152299 (37.6%)	314967	579087 (18.5%)	45699
History of depression	None	12540909 (71.2%)	678621	9506259 (69.3%)	569673	2424975 (77.5%)	99657
	More than six months ago	4629915 (26.3%)	265431	3908361 (28.5%)	259293	647697 (20.7%)	43281
	Within six months	449157 (2.5%)	31371	301599 (2.2%)	21057	57909 (1.8%)	4377
History of eating disorders	None	17442471 (99%)	964419	13570203 (98.9%)	839469	3100647 (99%)	145191
	More than six months ago	171861 (1%)	10611	140967 (1%)	10221	28803 (0.9%)	2037
	Within six months	5649 (0%)	393	5055 (0%)	333	1131 (0%)	87
History of general anxiety	None	13940733 (79.1%)	757449	10593231 (77.2%)	639285	2578311 (82.4%)	109329
	More than six months ago	3378171 (19.2%)	196617	2913429 (21.2%)	195711	507069 (16.2%)	34401
	Within six months	301083 (1.7%)	21363	209559 (1.5%)	15027	45201 (1.4%)	3585
History of self-harm	None	16849539 (95.6%)	930099	13130817 (95.7%)	813273	2969463 (94.9%)	137529
	More than six months ago	744843 (4.2%)	43503	569349 (4.2%)	35781	154821 (4.9%)	9429
	Within six months	25605 (0.1%)	1821	16053 (0.1%)	963	6291 (0.2%)	357
History of serious mental illness	None	15097599 (85.7%)	828747	11647629 (84.9%)	714519	2753379 (88%)	123141
	More than six months ago	2391747 (13.6%)	137529	1990077 (14.5%)	130365	358479 (11.5%)	22941
	Within six months	130641 (0.7%)	9153	78513 (0.6%)	5133	18723 (0.6%)	1239
Medical history	Acute myocardial infarction	449439 (2.6%)	22239	417135 (3%)	16527	21087 (0.7%)	1131
	Cancer	5273097 (29.9%)	327495	4684545 (34.2%)	357519	599169 (19.1%)	49731
	Chronic kidney disease	1126839 (6.4%)	54903	1044879 (7.6%)	37965	46425 (1.5%)	2649
	COPD	586821 (3.3%)	27807	530235 (3.9%)	20667	28299 (0.9%)	1395
	Dementia	211965 (1.2%)	21621	170955 (1.2%)	6285	5895 (0.2%)	333
	Diabetes	1588881 (9%)	94269	1458759 (10.6%)	78333	118965 (3.8%)	7911
	Hypertension	6135309 (34.8%)	309891	5462565 (39.8%)	283599	477465 (15.3%)	31245
	Liver disease	128733 (0.7%)	6849	114603 (0.8%)	5673	15849 (0.5%)	735
	Obesity	4385937 (24.9%)	279231	3786285 (27.6%)	259983	468033 (15%)	33099
Stroke	285837 (1.6%)	15123	265863 (1.9%)	9633	13425 (0.4%)	729	

COPD: chronic obstructive pulmonary disease.

Supplementary Table 4: Maximally adjusted hazard ratios and 95% CIs for mental illness events following hospitalised COVID-19 in the pre-vaccination, vaccinated and unvaccinated cohorts.

Outcome	Time since COVID-19	Pre-vaccination cohort	Vaccinated cohort	Unvaccinated cohort
Depression	Day 0	265 (253-278)	129 (118-142)	273 (248-300)
	1-4 weeks	16.5 (15.8-17.3)	12.9 (12.0-14.0)	15.6 (14.1-17.2)
	5-28 weeks	1.82 (1.72-1.93)	1.54 (1.31-1.81)	1.92 (1.58-2.34)
	29-52 weeks	1.45 (1.35-1.56)	-	-
	53-102 weeks	1.34 (1.21-1.48)	-	-
Serious mental illness	Day 0	227 (207-250)	104 (83.4-129)	144 (113-183)
	1-4 weeks	9.65 (8.71-10.7)	6.38 (5.21-7.80)	8.74 (6.97-11.0)
	5-28 weeks	1.55 (1.39-1.74)	0.91 (0.62-1.34)	1.01 (0.64-1.58)
	29-52 weeks	1.38 (1.22-1.57)	-	-
	53-102 weeks	1.03 (0.81-1.29)	-	-
General anxiety	Day 0	307 (290-324)	152 (135-170)	272 (242-306)
	1-4 weeks	21.3 (20.3-22.3)	17.3 (15.9-18.8)	27.2 (24.6-30.1)
	5-28 weeks	1.96 (1.83-2.10)	1.62 (1.33-1.97)	3.04 (2.56-3.61)
	29-52 weeks	1.42 (1.31-1.55)	-	-
	53-102 weeks	1.21 (1.07-1.37)	-	-
Post-traumatic stress disorder	Day 0	403 (309-526)	285 (179-452)	372 (250-556)
	1-4 weeks	19.9 (15.6-25.5)	26.3 (19.3-35.8)	14.0 (8.40-23.4)
	5-28 weeks	4.11 (3.30-5.13)	2.10 (0.96-4.59)	2.67 (1.36-5.22)
	29-52 weeks	2.30 (1.71-3.10)	-	-
	53-102 weeks	1.97 (1.17-3.32)	-	-
Eating disorders	Day 0	172 (97.1-304)	†	†
	1-4 weeks	9.08 (5.37-15.3)	†	†
	5-28 weeks	1.68 (1.01-2.79)	†	†
	29-52 weeks	1.34 (0.73-2.46)	-	-
	53-102 weeks	1.94 (0.96-3.90)	-	-
Addiction	Day 0	285 (203-400)	†	366 (260-515)
	1-4 weeks	8.45 (5.54-12.9)	†	8.71 (5.36-14.1)
	5-28 weeks	1.48 (0.95-2.32)	†	0.82 (0.26-2.53)
	29-52 weeks	1.65 (1.01-2.69)	-	-
	53-102 weeks	1.25 (0.52-3.02)	-	-
Self-harm	Day 0	80.5 (55.5-117)	†	†
	1-4 weeks	3.58 (2.49-5.13)	†	†
	5-28 weeks	1.78 (1.43-2.22)	†	†
	29-52 weeks	1.67 (1.29-2.15)	-	-
	53-102 weeks	1.87 (1.34-2.61)	-	-

† Insufficient events for estimation

Supplementary Table 5: Maximally adjusted hazard ratios and 95% CIs for mental illness events following non-hospitalised COVID-19 in the pre-vaccination, vaccinated and unvaccinated cohorts.

Outcome	Time since COVID-19	Pre-vaccination cohort	Vaccinated cohort	Unvaccinated cohort
Depression	Day 0	17.7 (16.9-18.5)	5.41 (5.03-5.82)	7.79 (6.79-8.95)
	1-4 weeks	1.22 (1.17-1.26)	0.92 (0.88-0.95)	1.11 (1.02-1.20)
	5-28 weeks	1.22 (1.20-1.24)	1.10 (1.07-1.13)	1.26 (1.19-1.33)
	29-52 weeks	1.15 (1.13-1.17)	-	-
	53-102 weeks	1.15 (1.12-1.19)	-	-
Serious mental illness	Day 0	16.9 (15.5-18.4)	5.36 (4.63-6.21)	11.1 (8.90-13.9)
	1-4 weeks	1.04 (0.97-1.11)	0.79 (0.73-0.86)	0.98 (0.83-1.15)
	5-28 weeks	1.18 (1.15-1.21)	1.07 (1.01-1.12)	1.15 (1.03-1.28)
	29-52 weeks	1.14 (1.10-1.17)	-	-
	53-102 weeks	1.14 (1.08-1.21)	-	-
General anxiety	Day 0	18.8 (17.9-19.8)	5.47 (5.01-5.97)	9.44 (8.19-10.9)
	1-4 weeks	1.38 (1.33-1.44)	0.97 (0.93-1.01)	1.25 (1.15-1.36)
	5-28 weeks	1.23 (1.21-1.25)	1.11 (1.08-1.15)	1.31 (1.22-1.39)
	29-52 weeks	1.12 (1.10-1.15)	-	-
	53-102 weeks	1.14 (1.10-1.18)	-	-
Post-traumatic stress disorder	Day 0	21.6 (16.9-27.6)	7.00 (4.72-10.4)	13.8 (8.75-21.7)
	1-4 weeks	0.99 (0.79-1.24)	0.61 (0.46-0.81)	0.70 (0.46-1.09)
	5-28 weeks	0.99 (0.91-1.08)	1.01 (0.86-1.19)	0.97 (0.73-1.29)
	29-52 weeks	1.00 (0.91-1.10)	-	-
	53-102 weeks	1.07 (0.90-1.28)	-	-
Eating disorders	Day 0	19.1 (13.7-26.8)	4.70 (2.64-8.37)	†
	1-4 weeks	1.52 (1.20-1.92)	0.74 (0.53-1.05)	†
	5-28 weeks	1.24 (1.11-1.39)	0.87 (0.68-1.12)	†
	29-52 weeks	1.08 (0.95-1.23)	-	-
	53-102 weeks	1.14 (0.89-1.47)	-	-
Addiction	Day 0	48.1 (39.9-58.0)	12.5 (8.35-18.7)	22.9 (16.1-32.7)
	1-4 weeks	0.97 (0.75-1.25)	0.70 (0.49-1.01)	0.53 (0.32-0.87)
	5-28 weeks	0.90 (0.81-1.00)	0.63 (0.47-0.83)	0.77 (0.56-1.06)
	29-52 weeks	0.94 (0.84-1.06)	-	-
	53-102 weeks	0.86 (0.67-1.12)	-	-
Self-harm	Day 0	19.3 (16.3-22.8)	10.1 (7.93-13.0)	10.4 (6.82-16.0)
	1-4 weeks	1.10 (0.96-1.27)	0.94 (0.79-1.11)	1.08 (0.81-1.44)
	5-28 weeks	1.13 (1.07-1.20)	1.11 (0.99-1.25)	0.93 (0.74-1.18)
	29-52 weeks	1.15 (1.08-1.23)	-	-
	53-102 weeks	1.09 (0.95-1.24)	-	-
Suicide	Day 0	12.0 (4.34-33.4)	†	†
	1-4 weeks	2.38 (1.40-4.04)	†	†
	5-28 weeks	0.82 (0.57-1.17)	†	†
	29-52 weeks	0.80 (0.54-1.20)	-	-
	53-102 weeks	0.69 (0.29-1.66)	-	-

† Insufficient events for estimation

Supplementary Table 6: Maximally adjusted hazard ratios and 95% CIs for mental illness events following diagnosis of COVID-19 in the pre-vaccination, vaccinated and unvaccinated cohorts, in people with no prior history of the event.

Outcome	Time since COVID-19	Pre-vaccination cohort	Vaccinated cohort	Unvaccinated cohort
Depression	Day 0	18.1 (16.7-19.6)	5.94 (5.12-6.89)	11.3 (8.81-14.4)
	1-4 weeks	1.58 (1.50-1.)	1.11 (1.03-1.19)	1.44 (1.23-1.67)
	5-28 weeks	1.40 (1.37-1.44)	1.26 (1.20-1.32)	1.48 (1.32-1.67)
	29-52 weeks	1.23 (1.20-1.27)	-	-
	53-102 weeks	1.30 (1.24-1.37)	-	-
Serious mental illness	Day 0	11.0 (9.62-12.7)	4.20 (3.25-5.43)	8.84 (6.15-12.7)
	1-4 weeks	1.18 (1.08-1.29)	0.94 (0.83-1.06)	1.20 (0.96-1.50)
	5-28 weeks	1.31 (1.26-1.35)	1.23 (1.14-1.32)	1.24 (1.05-1.47)
	29-52 weeks	1.24 (1.19-1.29)	-	-
	53-102 weeks	1.21 (1.12-1.31)	-	-

† Insufficient events for estimation

Supplementary Table 7: Maximally adjusted hazard ratios and 95% CIs for mental illness events following diagnosis of COVID-19 in the pre-vaccination, vaccinated and unvaccinated cohorts, in people with prior history of event, more than six months ago.

Outcome	Time since COVID-19	Pre-vaccination cohort	Vaccinated cohort	Unvaccinated cohort
Depression	Day 0	41.0 (39.5-42.7)	10.7 (10.0-11.4)	24.4 (22.1-27.1)
	1-4 weeks	2.16 (2.08-2.23)	1.22 (1.17-1.27)	2.06 (1.91-2.23)
	5-28 weeks	1.17 (1.15-1.19)	1.11 (1.07-1.14)	1.29 (1.20-1.39)
	29-52 weeks	1.12 (1.10-1.15)	-	-
	53-102 weeks	1.08 (1.04-1.13)	-	-
Serious mental illness	Day 0	47.7 (44.2-51.4)	11.2 (9.70-12.9)	27.4 (22.4-33.5)
	1-4 weeks	1.79 (1.65-1.94)	0.89 (0.80-1.00)	1.56 (1.30-1.88)
	5-28 weeks	1.09 (1.04-1.13)	1.00 (0.93-1.08)	1.01 (0.86-1.19)
	29-52 weeks	1.07 (1.02-1.12)	-	-
	53-102 weeks	1.09 (0.99-1.19)	-	-

† Insufficient events for estimation

Supplementary Table 8: Maximally adjusted hazard ratios and 95% CIs for mental illness events following diagnosis of COVID-19 in the pre-vaccination, vaccinated and unvaccinated cohorts, in people with prior history of event, within six months.

Outcome	Time since COVID-19	Pre-vaccination cohort	Vaccinated cohort	Unvaccinated cohort
Depression	Day 0	39.3 (36.4-42.4)	9.66 (8.62-10.8)	12.3 (9.97-15.1)
	1-4 weeks	1.66 (1.52-1.80)	1.01 (0.93-1.10)	1.33 (1.15-1.54)
	5-28 weeks	1.07 (1.02-1.12)	0.94 (0.87-1.00)	1.01 (0.88-1.16)
	29-52 weeks	1.02 (0.97-1.08)	-	-
	53-102 weeks	1.11 (1.01-1.23)	-	-
Serious mental illness	Day 0	65.1 (56.8-74.7)	14.4 (11.4-18.3)	19.9 (13.1-30.0)
	1-4 weeks	1.88 (1.57-2.26)	1.07 (0.87-1.33)	1.34 (0.94-1.93)
	5-28 weeks	1.02 (0.92-1.14)	0.93 (0.78-1.10)	1.13 (0.83-1.52)
	29-52 weeks	0.87 (0.76-1.00)	-	-
	53-102 weeks	1.02 (0.80-1.30)	-	-

† Insufficient events for estimation

Supplementary Table 9: Maximally adjusted hazard ratios and 95% CIs for mental illness events following diagnosis of COVID-19 in the pre-vaccination, vaccinated and unvaccinated cohorts, in people with history of COVID-19.

Outcome	Time since COVID-19	Vaccinated cohort	Unvaccinated cohort
Depression	Day 0	41.4 (34.0-50.4)	51.4 (35.2-75.1)
	1-4 weeks	1.30 (0.99-1.72)	2.58 (1.73-3.85)
	5-28 weeks	1.13 (0.94-1.35)	1.68 (1.20-2.35)
Serious mental illness	Day 0	45.1 (30.2-67.4)	†
	1-4 weeks	0.82 (0.41-1.64)	†
	5-28 weeks	0.87 (0.58-1.31)	†

† Insufficient events for estimation

Supplementary Table 10: Maximally adjusted hazard ratios and 95% CIs for mental illness events following diagnosis of COVID-19 in the pre-vaccination, vaccinated and unvaccinated cohorts for age group 18-39.

Outcome	Time since COVID-19	Pre-vaccination cohort	Vaccinated cohort	Unvaccinated cohort
Depression	Day 0	6.10 (5.47-6.82)	2.15 (1.77-2.61)	7.19 (6.08-8.50)
	1-4 weeks	1.07 (1.01-1.12)	0.88 (0.82-0.94)	1.30 (1.19-1.42)
	5-28 weeks	1.19 (1.16-1.21)	1.06 (1.02-1.11)	1.23 (1.14-1.32)
	29-52 weeks	1.16 (1.14-1.19)	-	-
	53-102 weeks	1.19 (1.13-1.25)	-	-
Serious mental illness	Day 0	5.60 (4.58-6.84)	1.85 (1.24-2.76)	7.91 (5.80-10.8)
	1-4 weeks	0.97 (0.88-1.07)	0.83 (0.72-0.94)	1.05 (0.87-1.26)
	5-28 weeks	1.13 (1.09-1.17)	1.10 (1.01-1.19)	1.15 (0.99-1.33)
	29-52 weeks	1.13 (1.08-1.17)	-	-
	53-102 weeks	1.05 (0.96-1.15)	-	-

† Insufficient events for estimation

Supplementary Table 11: Maximally adjusted hazard ratios and 95% CIs for mental illness events following diagnosis of COVID-19 in the pre-vaccination, vaccinated and unvaccinated cohorts for age group 40-59.

Outcome	Time since COVID-19	Pre-vaccination cohort	Vaccinated cohort	Unvaccinated cohort
Depression	Day 0	24.6 (23.0-26.2)	4.52 (4.01-5.10)	30.0 (26.1-34.4)
	1-4 weeks	2.11 (2.01-2.20)	1.10 (1.05-1.16)	2.40 (2.15-2.68)
	5-28 weeks	1.22 (1.19-1.25)	1.13 (1.08-1.17)	1.39 (1.26-1.54)
	29-52 weeks	1.16 (1.13-1.19)	-	-
	53-102 weeks	1.21 (1.15-1.27)	-	-
Serious mental illness	Day 0	22.4 (19.8-25.5)	4.46 (3.51-5.67)	24.3 (18.4-32.2)
	1-4 weeks	1.44 (1.30-1.59)	0.80 (0.71-0.91)	1.48 (1.16-1.89)
	5-28 weeks	1.12 (1.06-1.17)	1.05 (0.97-1.14)	1.11 (0.92-1.34)
	29-52 weeks	1.09 (1.04-1.15)	-	-
	53-102 weeks	1.23 (1.11-1.35)	-	-

† Insufficient events for estimation

Supplementary Table 12: Maximally adjusted hazard ratios and 95% CIs for mental illness events following diagnosis of COVID-19 in the pre-vaccination, vaccinated and unvaccinated cohorts for age group 60-79.

Outcome	Time since COVID-19	Pre-vaccination cohort	Vaccinated cohort	Unvaccinated cohort
Depression	Day 0	111 (105-117)	23.4 (21.3-25.7)	477 (435-522)
	1-4 weeks	4.46 (4.21-4.71)	1.67 (1.55-1.80)	21.6 (19.5-23.9)
	5-28 weeks	1.44 (1.39-1.50)	1.17 (1.09-1.24)	2.79 (2.26-3.43)
	29-52 weeks	1.19 (1.14-1.24)	-	-
	53-102 weeks	1.11 (1.03-1.20)	-	-
Serious mental illness	Day 0	120 (109-132)	27.2 (22.7-32.5)	123 (86.7-175)
	1-4 weeks	3.31 (2.93-3.73)	1.35 (1.13-1.61)	6.29 (4.36-9.08)
	5-28 weeks	1.54 (1.43-1.66)	1.06 (0.92-1.22)	1.68 (1.03-2.75)
	29-52 weeks	1.31 (1.20-1.42)	-	-
	53-102 weeks	1.08 (0.93-1.26)	-	-

† Insufficient events for estimation

Supplementary Table 13: Maximally adjusted hazard ratios and 95% CIs for mental illness events following diagnosis of COVID-19 in the pre-vaccination, vaccinated and unvaccinated cohorts for age group 80-110.

Outcome	Time since COVID-19	Pre-vaccination cohort	Vaccinated cohort	Unvaccinated cohort
Depression	Day 0	131 (122-142)	71.3 (63.3-80.3)	279 (196-397)
	1-4 weeks	3.22 (2.90-3.59)	2.74 (2.40-3.14)	6.75 (3.92-11.6)
	5-28 weeks	1.41 (1.31-1.51)	1.27 (1.10-1.47)	1.92 (0.90-4.08)
	29-52 weeks	1.11 (1.02-1.21)	-	-
	53-102 weeks	0.89 (0.80-1.01)	-	-
Serious mental illness	Day 0	103 (87.1-122)	58.3 (43.7-77.6)	†
	1-4 weeks	3.60 (2.95-4.40)	1.92 (1.36-2.71)	†
	5-28 weeks	1.73 (1.51-1.97)	1.21 (0.89-1.65)	†
	29-52 weeks	1.42 (1.22-1.67)	-	-
	53-102 weeks	1.04 (0.84-1.29)	-	-

† Insufficient events for estimation

Supplementary Table 14: Maximally adjusted hazard ratios and 95% CIs for mental illness events following diagnosis of COVID-19 in the pre-vaccination, vaccinated and unvaccinated cohorts for women.

Outcome	Time since COVID-19	Pre-vaccination cohort	Vaccinated cohort	Unvaccinated cohort
Depression	Day 0	26.4 (25.3-27.6)	7.33 (6.80-7.91)	17.2 (15.5-19.2)
	1-4 weeks	1.77 (1.71-1.84)	1.11 (1.06-1.15)	1.63 (1.51-1.76)
	5-28 weeks	1.23 (1.21-1.25)	1.11 (1.08-1.15)	1.25 (1.16-1.33)
	29-52 weeks	1.15 (1.13-1.17)	-	-
	53-102 weeks	1.16 (1.12-1.21)	-	-
Serious mental illness	Day 0	25.5 (23.4-27.8)	6.18 (5.22-7.32)	15.2 (12.0-19.2)
	1-4 weeks	1.34 (1.24-1.45)	0.87 (0.79-0.96)	1.16 (0.96-1.39)
	5-28 weeks	1.19 (1.15-1.23)	1.11 (1.04-1.18)	1.12 (0.97-1.29)
	29-52 weeks	1.14 (1.10-1.19)	-	-
	53-102 weeks	1.13 (1.05-1.21)	-	-

† Insufficient events for estimation

Supplementary Table 15: Maximally adjusted hazard ratios and 95% CIs for mental illness events following diagnosis of COVID-19 in the pre-vaccination, vaccinated and unvaccinated cohorts for men.

Outcome	Time since COVID-19	Pre-vaccination cohort	Vaccinated cohort	Unvaccinated cohort
Depression	Day 0	53.5 (51.2-55.8)	11.2 (10.2-12.2)	24.0 (20.8-27.8)
	1-4 weeks	2.26 (2.16-2.36)	1.29 (1.21-1.36)	2.22 (1.99-2.47)
	5-28 weeks	1.27 (1.24-1.30)	1.11 (1.06-1.16)	1.40 (1.26-1.55)
	29-52 weeks	1.18 (1.15-1.21)	-	-
	53-102 weeks	1.18 (1.11-1.24)	-	-
Serious mental illness	Day 0	36.1 (33.0-39.6)	10.4 (8.76-12.4)	24.5 (19.4-30.9)
	1-4 weeks	1.70 (1.56-1.85)	0.99 (0.88-1.12)	1.78 (1.47-2.15)
	5-28 weeks	1.22 (1.17-1.27)	1.02 (0.93-1.11)	1.14 (0.95-1.36)
	29-52 weeks	1.16 (1.10-1.21)	-	-
	53-102 weeks	1.13 (1.02-1.24)	-	-

† Insufficient events for estimation

Supplementary Table 16: Maximally adjusted hazard ratios and 95% CIs for mental illness events following diagnosis of COVID-19 in the pre-vaccination, vaccinated and unvaccinated cohorts for White ethnicity.

Outcome	Time since COVID-19	Pre-vaccination cohort	Vaccinated cohort	Unvaccinated cohort
Depression	Day 0	34.2 (33.0-35.4)	8.67 (8.17-9.20)	18.3 (16.7-20.2)
	1-4 weeks	1.94 (1.88-1.99)	1.16 (1.12-1.20)	1.74 (1.62-1.86)
	5-28 weeks	1.24 (1.22-1.26)	1.11 (1.08-1.14)	1.25 (1.18-1.33)
	29-52 weeks	1.15 (1.13-1.17)	-	-
	53-102 weeks	1.17 (1.13-1.21)	-	-
Serious mental illness	Day 0	29.2 (27.3-31.3)	7.65 (6.73-8.69)	17.7 (14.6-21.3)
	1-4 weeks	1.42 (1.33-1.51)	0.91 (0.84-0.99)	1.33 (1.15-1.54)
	5-28 weeks	1.21 (1.17-1.24)	1.07 (1.02-1.13)	1.12 (0.99-1.26)
	29-52 weeks	1.15 (1.11-1.18)	-	-
	53-102 weeks	1.13 (1.06-1.21)	-	-

† Insufficient events for estimation

Supplementary Table 17: Maximally adjusted hazard ratios and 95% CIs for mental illness events following diagnosis of COVID-19 in the pre-vaccination, vaccinated and unvaccinated cohorts for South Asian ethnicity.

Outcome	Time since COVID-19	Pre-vaccination cohort	Vaccinated cohort	Unvaccinated cohort
Depression	Day 0	29.2 (25.5-33.4)	12.4 (9.36-16.5)	36.6 (27.0-49.6)
	1-4 weeks	1.99 (1.80-2.21)	1.12 (0.91-1.37)	2.13 (1.63-2.80)
	5-28 weeks	1.33 (1.27-1.41)	1.15 (0.99-1.32)	1.40 (1.09-1.79)
	29-52 weeks	1.23 (1.16-1.30)	-	-
	53-102 weeks	1.14 (1.02-1.27)	-	-
Serious mental illness	Day 0	34.8 (28.3-42.6)	9.31 (5.29-16.4)	†
	1-4 weeks	1.68 (1.40-2.03)	0.88 (0.59-1.31)	†
	5-28 weeks	1.13 (1.03-1.24)	0.97 (0.74-1.27)	†
	29-52 weeks	1.09 (0.98-1.21)	-	-
	53-102 weeks	0.99 (0.81-1.20)	-	-

† Insufficient events for estimation

Supplementary Table 18: Maximally adjusted hazard ratios and 95% CIs for mental illness events following diagnosis of COVID-19 in the pre-vaccination, vaccinated and unvaccinated cohorts for Black ethnicity.

Outcome	Time since COVID-19	Pre-vaccination cohort	Vaccinated cohort	Unvaccinated cohort
Depression	Day 0	36.8 (28.5-47.4)	9.63 (5.16-18.0)	18.0 (11.1-29.0)
	1-4 weeks	1.93 (1.55-2.41)	1.65 (1.16-2.33)	1.88 (1.34-2.64)
	5-28 weeks	1.09 (0.97-1.23)	1.21 (0.89-1.63)	1.36 (1.03-1.78)
	29-52 weeks	1.22 (1.08-1.38)	-	-
	53-102 weeks	0.86 (0.65-1.13)	-	-
Serious mental illness	Day 0	49.8 (35.8-69.2)	†	†
	1-4 weeks	2.46 (1.82-3.32)	†	†
	5-28 weeks	0.94 (0.77-1.14)	†	†
	29-52 weeks	1.18 (0.97-1.44)	-	-
	53-102 weeks	1.13 (0.77-1.67)	-	-

† Insufficient events for estimation

Supplementary Table 19: Maximally adjusted hazard ratios and 95% CIs for mental illness events following diagnosis of COVID-19 in the pre-vaccination, vaccinated and unvaccinated cohorts for Other ethnicity.

Outcome	Time since COVID-19	Pre-vaccination cohort	Vaccinated cohort	Unvaccinated cohort
Depression	Day 0	35.8 (26.7-48.1)	3.42 (1.29-9.09)	25.5 (13.4-48.5)
	1-4 weeks	2.52 (2.01-3.16)	1.35 (0.95-1.93)	2.41 (1.47-3.93)
	5-28 weeks	1.56 (1.39-1.76)	1.18 (0.89-1.57)	1.86 (1.20-2.90)
	29-52 weeks	1.39 (1.21-1.59)	-	-
	53-102 weeks	1.31 (0.99-1.72)	-	-
Serious mental illness	Day 0	26.3 (15.2-45.6)	†	†
	1-4 weeks	1.48 (0.93-2.37)	†	†
	5-28 weeks	1.54 (1.27-1.87)	†	†
	29-52 weeks	1.53 (1.23-1.89)	-	-
	53-102 weeks	1.05 (0.64-1.72)	-	-

† Insufficient events for estimation

Supplementary Table 20: Maximally adjusted hazard ratios and 95% CIs for mental illness events following diagnosis of COVID-19 in the pre-vaccination, vaccinated and unvaccinated cohorts for Mixed ethnicity.

Outcome	Time since COVID-19	Pre-vaccination cohort	Vaccinated cohort	Unvaccinated cohort
Depression	Day 0	20.4 (14.1-29.4)	4.73 (2.15-10.4)	13.5 (7.39-24.6)
	1-4 weeks	1.46 (1.11-1.93)	0.75 (0.49-1.17)	2.08 (1.48-2.93)
	5-28 weeks	1.23 (1.08-1.39)	0.81 (0.60-1.10)	0.89 (0.61-1.32)
	29-52 weeks	1.10 (0.95-1.26)	-	-
	53-102 weeks	1.54 (1.20-1.96)	-	-
Serious mental illness	Day 0	23.5 (13.6-40.7)	†	†
	1-4 weeks	2.15 (1.50-3.09)	†	†
	5-28 weeks	1.03 (0.83-1.28)	†	†
	29-52 weeks	1.07 (0.85-1.34)	-	-
	53-102 weeks	1.66 (1.13-2.45)	-	-

† Insufficient events for estimation

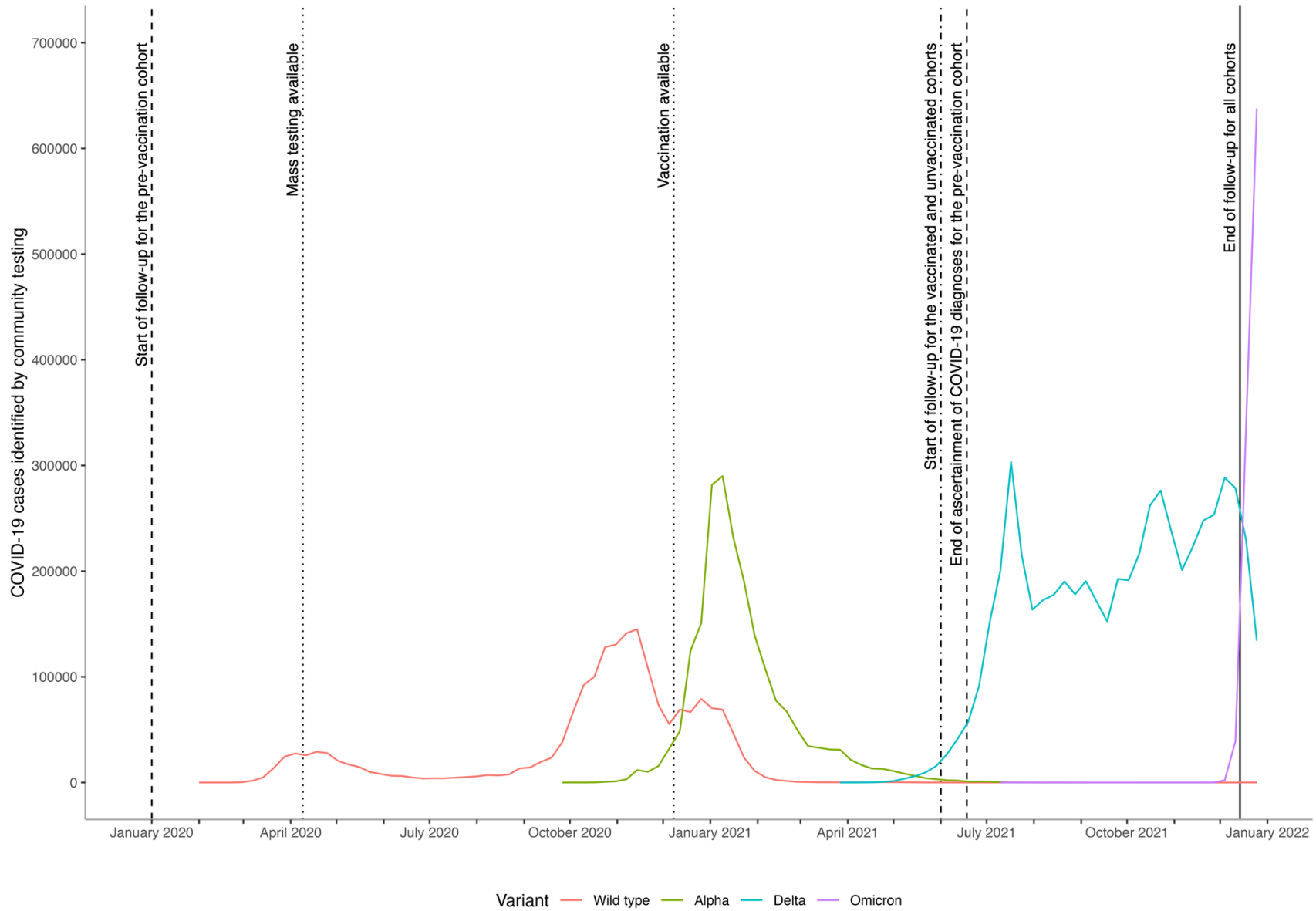
Supplementary Table 21: Excess events per 100,000 people at 28 weeks post-COVID-19 in the pre-vaccination, vaccinated and unvaccinated cohorts.

Outcome	Pre-vaccination cohort			Vaccinated cohort			Unvaccinated cohort		
	Day zero included	Day zero excluded	Difference (%)	Day zero included	Day zero excluded	Difference (%)	Day zero included	Day zero excluded	Difference (%)
Depression	1020	691	32	449	337	25	1009	802	21
Serious mental illness	227	141	38	60	34	43	199	130	34
General anxiety	817	571	30	357	280	22	1012	808	20
PTSD	26	13	48	5	1	85	27	11	60
Eating disorders	15	11	29	-4	-5	-32	11	7	34
Addiction	21	1	95	-9	-14	-44	5	-30	705
Self-harm	38	23	40	31	23	26	-1	-11	-1985
Suicide	303	20	93	†	†	†	†	†	†

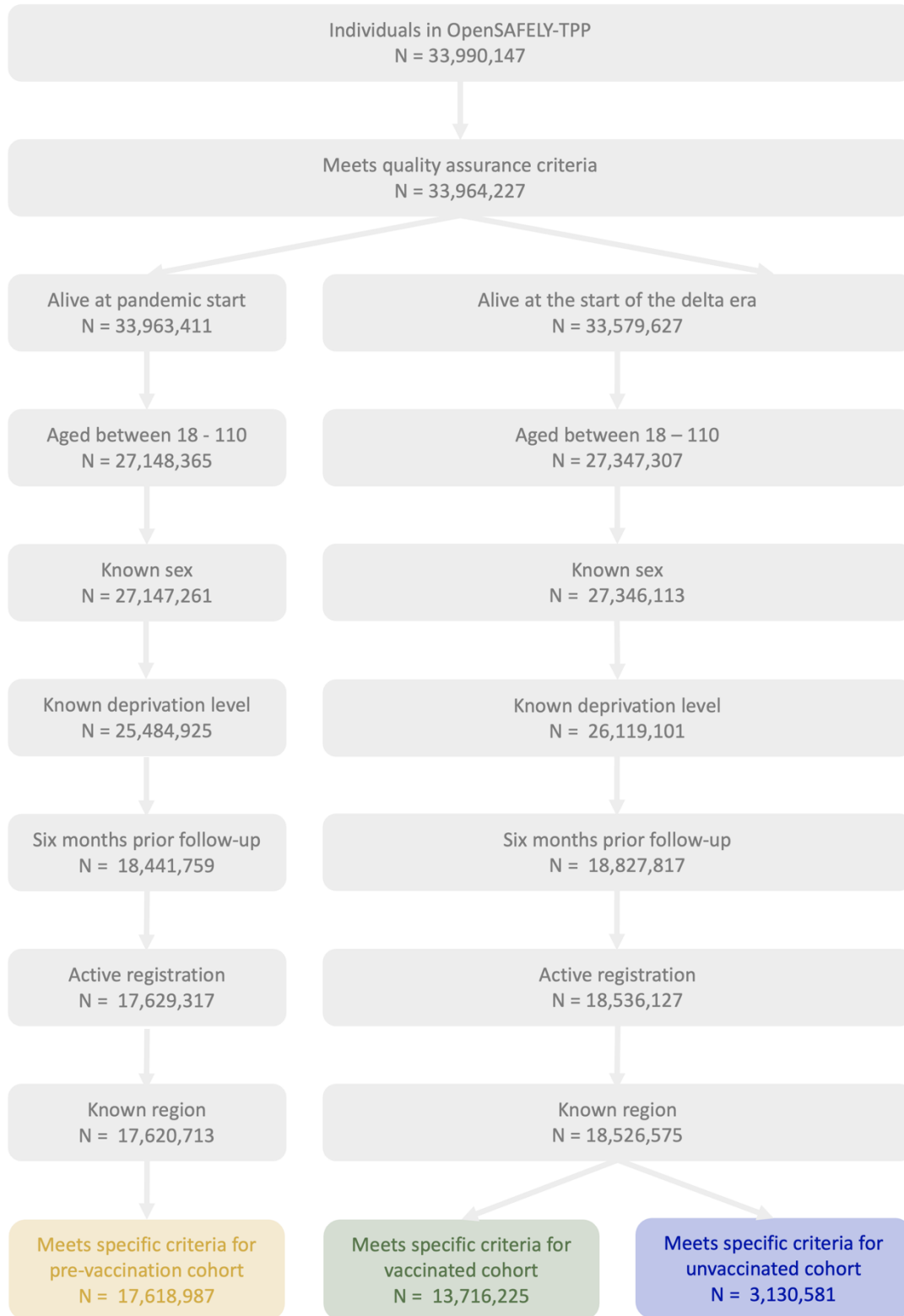
† Insufficient events for estimation; PTSD = post-traumatic stress disorder.

SUPPLEMENTARY FIGURES

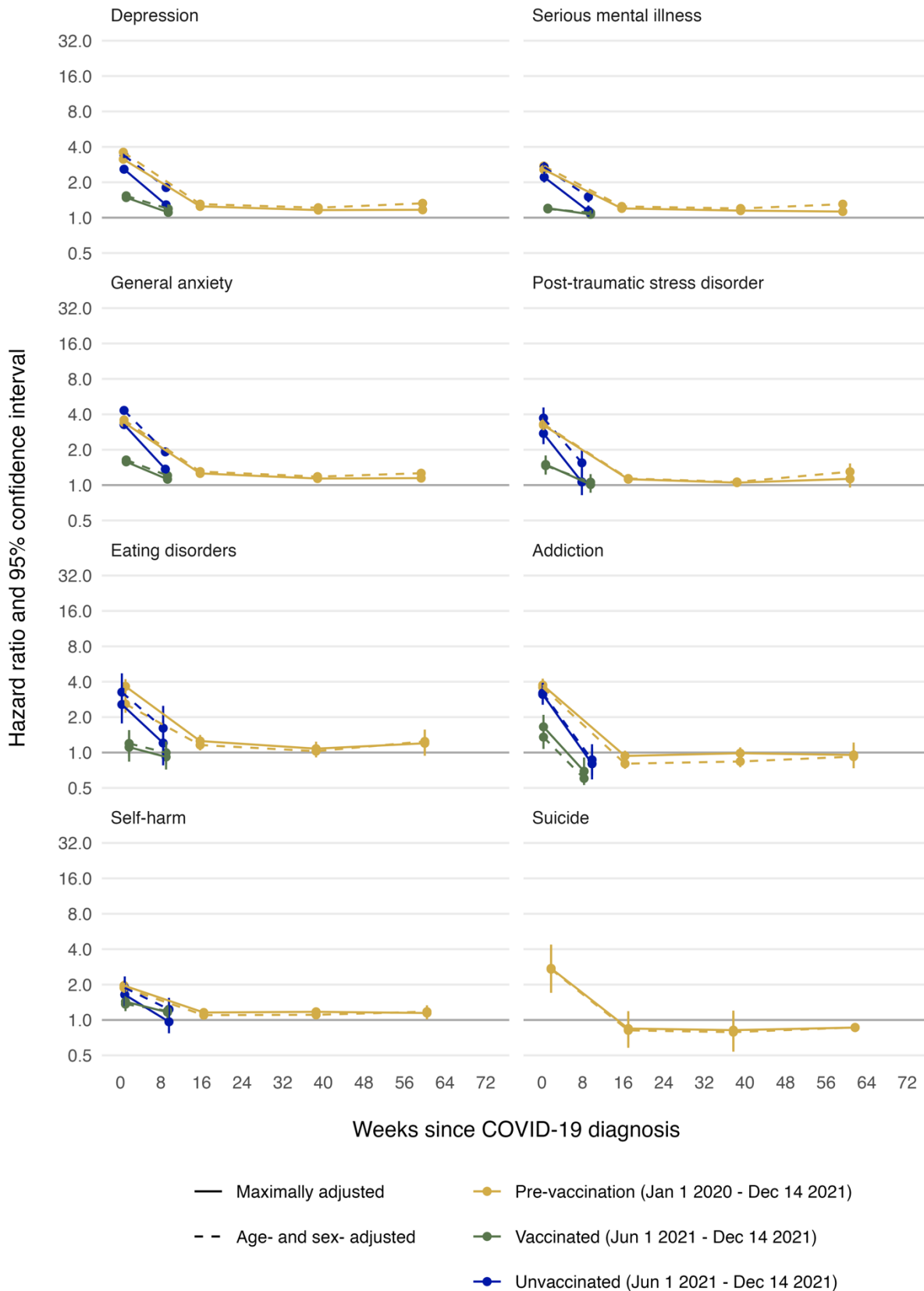
Supplementary Figure 1: COVID-19 cases over time



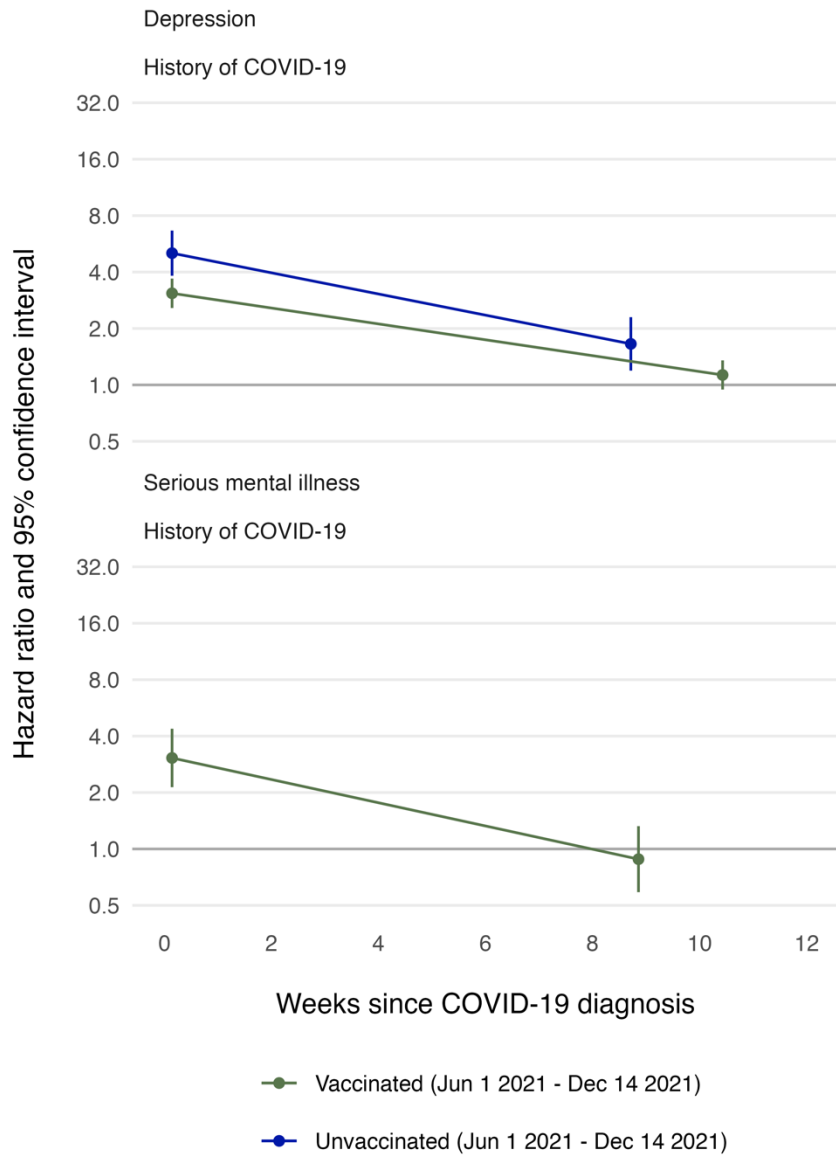
Supplementary Figure 2: Diagram showing cohort construction.



Supplementary Figure 3: Maximally and minimally adjusted hazard ratios and 95% CIs for mental illness events following diagnosis of COVID-19 in the pre-vaccination, vaccinated and unvaccinated cohorts. Events on the day of COVID-19 diagnosis (day 0) were excluded.

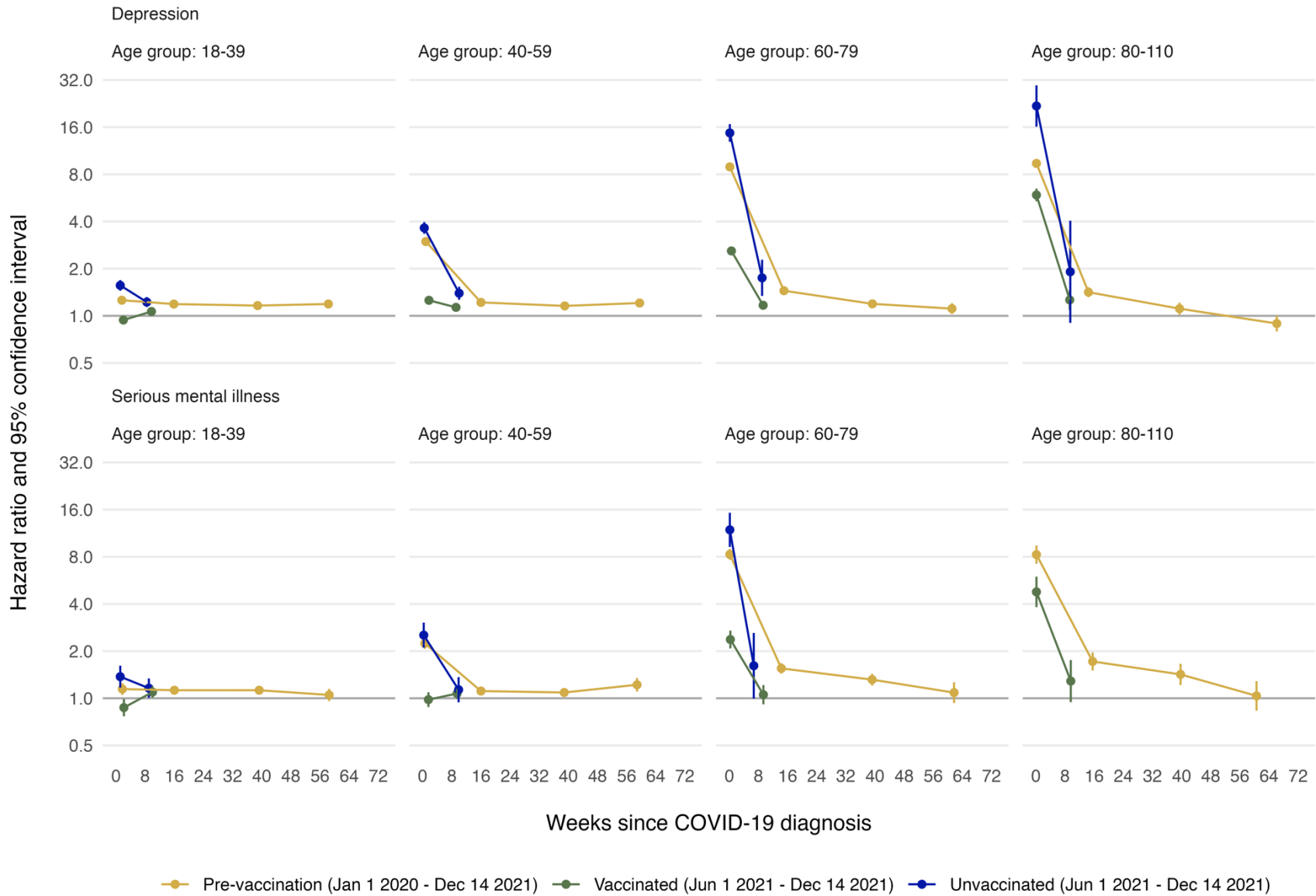


Supplementary Figure 4: Maximally adjusted hazard ratios and 95% CIs for depression and serious mental illness following diagnosis of COVID-19 in the vaccinated and unvaccinated cohorts, by history of COVID-19. Events on the day of COVID-19 diagnosis (day 0) were excluded.



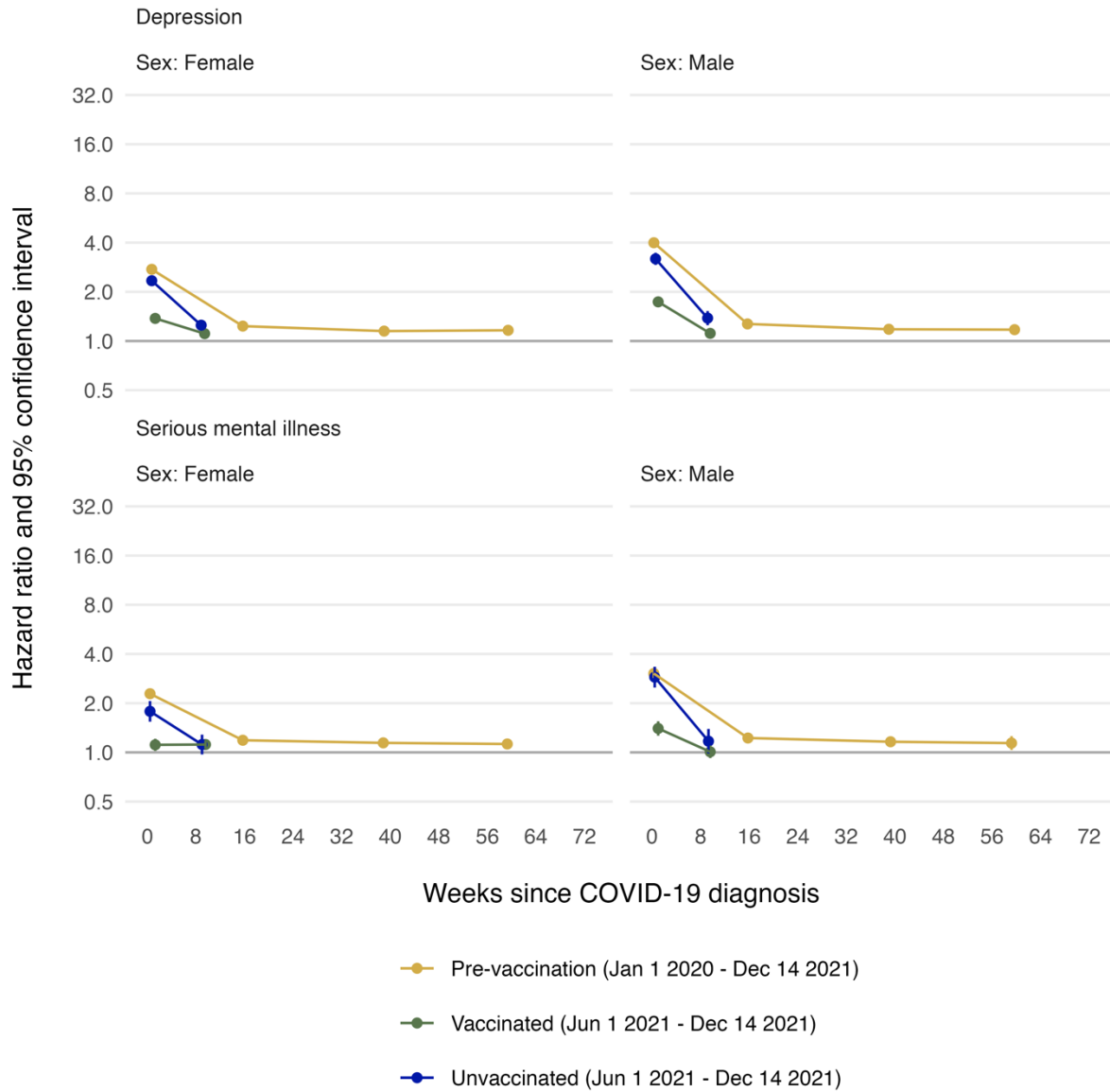
Note: there were less than 50 serious mental illness events post-COVID-19 in the unvaccinated cohort and so the model was not run.

Supplementary Figure 5: Maximally adjusted hazard ratios and 95% CIs for depression and serious mental illness following diagnosis of COVID-19 in the pre-vaccination, vaccinated and unvaccinated cohorts, by age group. Events on the day of COVID-19 diagnosis (day 0) were excluded.

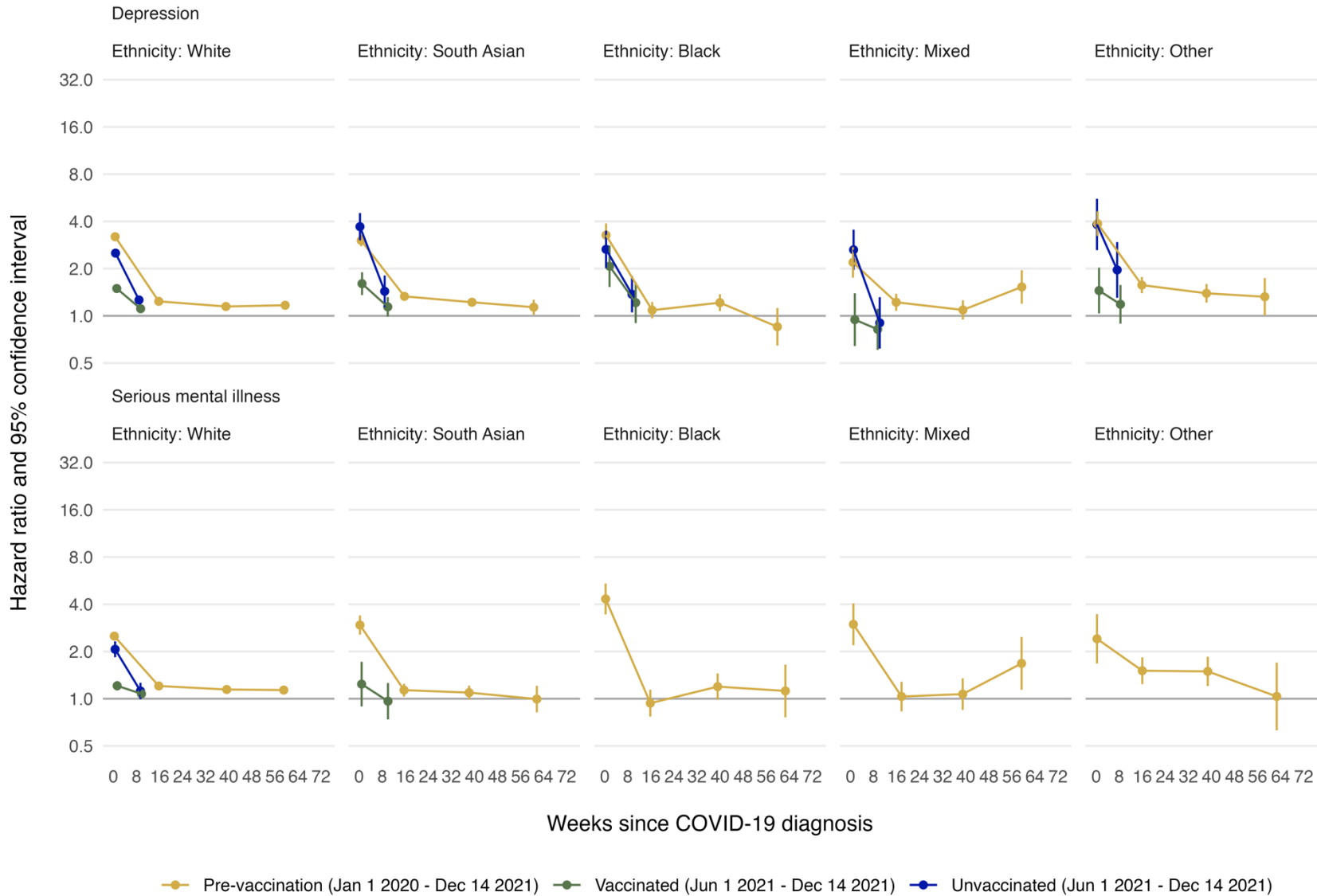


Note: There were less than 50 serious mental illness events post-COVID-19 among individuals aged 80-110 in the unvaccinated cohort and so the model was not run.

Supplementary Figure 6: Maximally adjusted hazard ratios and 95% CIs for depression and serious mental illness following diagnosis of COVID-19 in the pre-vaccination, vaccinated and unvaccinated cohorts, by sex. Events on the day of COVID-19 diagnosis (day 0) were excluded.



Supplementary Figure 7: Maximally adjusted hazard ratios and 95% CIs for depression and serious mental illness following diagnosis of COVID-19 in the pre-vaccination, vaccinated and unvaccinated cohorts, by ethnicity. Events on the day of COVID-19 diagnosis (day 0) were excluded.



Note: There were less than 50 serious mental illness events post-COVID-19 among individuals of Black, Mixed, and Other ethnicities in the vaccinated and unvaccinated cohorts so the model was not run. There were also less than 50 serious mental illness events post-COVID-19 among individuals of South Asian ethnicity in the unvaccinated cohorts so the model was not run.