

1 **Cerebral microhemorrhages in children with congenital heart disease: Prevalence, risk**
2 **factors, and impact on neurodevelopmental outcomes.**

3
4 **Short Title: Perioperative cerebral microhemorrhages in children with CHD**

5
6 Kristen N. Andersen,¹ Sicong Yao,² Brian R. White,³ Marin Jacobwitz,¹ Jake Breimann,¹ Jharna
7 Jahnavi,¹ Alexander Schmidt,¹ Wesley B. Baker,¹ Tiffany S. Ko,⁴ J. William Gaynor,⁵ Arastoo
8 Vossough,⁶ Rui Xiao,² Daniel J. Licht,^{1,7,8} Evelyn K. Shih^{1,8}

9
10 **Author Affiliations:**

11 ¹Department of Pediatrics, Division of Neurology, Children's Hospital of Philadelphia,
12 Philadelphia, PA

13 ²Department of Pediatrics, Division of Biostatistics, The Children's Hospital of Philadelphia,
14 Philadelphia, PA 19104

15 ³Department of Pediatrics, Division of Cardiology, Children's Hospital of Philadelphia and the
16 Perelman School of Medicine at the University of Pennsylvania, Philadelphia, PA

17 ⁴Department of Anesthesiology and Critical Care Medicine, Children's Hospital of Philadelphia,
18 Philadelphia, PA 19104

19 ⁵Department of Surgery, Division of Cardiothoracic Surgery, The Children's Hospital of
20 Philadelphia, Philadelphia, PA

21 ⁶Department of Radiology, The Children's Hospital of Philadelphia, Philadelphia, PA

22 ⁷Perinatal Pediatrics Institute, Children's National Hospital, Washington D.C.

23 ⁸Department of Neurology, University of Pennsylvania Perelman School of Medicine,
24 Philadelphia, PA

25
26
27 **Corresponding Author:**

28 Evelyn Shih, MD, PhD

29 Children's Hospital of Philadelphia

30 Division of Neurology

31 3401 Civic Center Boulevard

32 Philadelphia, PA, 19104 US

33 Fax: 215-590-1771

34 Phone: 215-590-1719

35 Email: shihe@chop.edu

36
37 **Total Word Count: 4,583**

38

39 **Abstract**

40 **Background:** Infants with complex congenital heart disease (CHD) require life-saving
41 corrective/palliative heart surgery in the first weeks of life. These infants are at risk for brain
42 injury and poor neurodevelopmental outcomes. Cerebral microhemorrhages (CMH) are
43 frequently seen after neonatal bypass heart surgery, but it remains unknown if CMH are a benign
44 finding or constitute injury. Herein, we investigate the risk factors for developing CMH and their
45 clinical significance.

46
47 **Methods:** 192 infants with CHD undergoing corrective cardiac surgery with cardiopulmonary
48 bypass (CPB) at a single institution were prospectively evaluated with pre- (n = 183) and/or
49 postoperative (n = 162) brain magnetic resonance imaging (MRI). CMH severity was scored
50 based on total number of microhemorrhages. Antenatal, perioperative, and postoperative
51 candidate risk factors for CMH and neurodevelopmental (ND) outcomes were analyzed.
52 Eighteen-month neurodevelopmental outcomes were assessed using the Bayley-III Scales of
53 Infants and Toddler Development in a subset of patients (n = 82). Linear regression was used to
54 analyze associations between risk factors or ND outcomes and presence/number of CMH.

55
56 **Results:** The most common CHD subtypes were hypoplastic left heart syndrome (HLHS) (37%)
57 and transposition of the great arteries (TGA) (33%). Forty-two infants (23%) had CMH present
58 on MRI before surgery and 137 infants (85%) post-surgery. No parameters evaluated were
59 significant risk factors for preoperative CMH. In multivariate analysis, cardiopulmonary bypass
60 (CPB) duration ($p < 0.0001$), use of extracorporeal membrane oxygenation (ECMO) support ($p <$
61 0.0005), postoperative seizure(s) ($p < 0.03$), and lower birth weight ($p < 0.03$) were associated
62 with new or worsened CMH postoperatively. Higher CMH number was associated with lower
63 scores on motor ($p < 0.03$) testing at 18 months.

64
65 **Conclusion:** CMH is a common imaging finding in infants with CHD with increased prevalence
66 and severity after CPB and adverse impact on neurodevelopmental outcomes starting at a young
67 age. Longer duration of CPB and need for postoperative ECMO were the most significant risk
68 factors for developing CMH. However, presence of CMH on preoperative scans indicates non-
69 surgical risk factors that are yet to be identified. Neuroprotective strategies to mitigate risk
70 factors for CMH may improve neurodevelopmental outcomes in this vulnerable population.

71

72 **Introduction**

73 Infants with complex congenital heart disease (CHD) often undergo corrective surgery with
74 cardiopulmonary bypass (CPB) within the first weeks of life. These infants are at increased risk
75 for brain immaturity at birth, disordered brain development, acquired brain injury, and
76 neurodevelopmental impairments spanning early development to adolescence and into
77 adulthood.¹⁻⁶ However, the underlying causes of this brain injury are not fully understood, and
78 the impact on prognosis in the individual patient is variable. White matter injury (WMI) is the
79 best characterized and most extensively studied type of injury in this patient population.⁷⁻⁹ Risk
80 factors for WMI have been well-characterized.^{7,10,11} In contrast, although cerebral
81 microhemorrhages (CMH) are the most common finding on perioperative brain magnetic
82 resonance imaging (MRI), there is limited available data on risk factors for and clinical
83 significance of CMH. In this study, we aimed to identify the prevalence of, risk factors for, and
84 impact of CMH on neurodevelopmental outcomes in a cohort of infants with CHD who
85 underwent surgery with CPB within the first two weeks of life.

86
87 CMH are rounded hypointense foci of <5 mm best visualized on susceptibility weighted imaging
88 (SWI) sequences on MRI but can also sometimes be seen on gradient-echo (GRE).¹² In other
89 contexts, these foci are most common in perivascular locations throughout the parenchyma and
90 are thought to represent deposits of hemosiderin that are associated with previous hemorrhagic
91 events.¹²⁻¹⁴ Acute microhemorrhages, as seen postoperatively in our cohort, may represent other
92 blood degradation products (e.g., extracellular deoxyhemoglobin, methemoglobin), all of which
93 demonstrate susceptibility. Although CMH have been attributed to microscopic embolic material
94 from the bypass pump, this would not account for their presence prior to surgery. CMH have
95 been well-studied in adult populations and are frequently observed in healthy aged individuals,
96 as well as patients with traumatic brain injury (TBI), dementia, cerebral amyloid angiopathy
97 (CAA), or cerebral autosomal dominant arteriopathy with subcortical infarcts and
98 leukoencephalopathy (CADASIL).¹² In TBI, CMH are thought to arise from forces causing
99 axonal shear and compromise of the vasa nervorum with resulting microhemorrhage. Age has
100 been shown to be an independent risk factor for developing CMH with a 20-40% higher
101 incidence of CMH in those over 65 years.¹⁵ When located in the lobar regions of the brain, CMH

102 are part of the diagnostic criteria for cerebral amyloid angiopathy.¹⁶ Hypertension is another
103 independent risk factor for CMH, most commonly resulting in lesions that are distributed in deep
104 and infratentorial brain regions.¹⁵ Importantly, the presence of CMH in these populations is a
105 clinically significant finding that is linked with cognitive impairment, gait disturbances, and risk
106 of intraventricular hemorrhage.^{12,17,18}

107
108 In children, there are significantly fewer studies examining the prevalence and impact of CMH.
109 Two prior studies have investigated CMH in children with CHD; however, these were limited by
110 MRIs performed at one year of age (thus remote from the surgical insult) and small sample size.
111 In this study, we address this gap in knowledge by analyzing a large single-center cohort of
112 infants with CHD who underwent corrective surgery with CPB within the first weeks of life. Our
113 prospective study benefited from the collection of both pre- and postoperative imaging as well as
114 the collection of long-term neurodevelopmental outcomes. Our goals were to: (1) determine the
115 prevalence of cerebral microhemorrhage in both the preoperative and postoperative time periods;
116 (2) elucidate antenatal preoperative and operative risk factors associated with cerebral
117 microhemorrhages; and (3) investigate the impact of cerebral microhemorrhage on
118 neurodevelopmental outcomes in this population.

119 120 **Methods**

121 *Study Design and Population*

122 We performed a post hoc analysis of data prospectively collected from 2008-2019 as part of a
123 longitudinal cohort study of term infants with CHD who underwent neonatal cardiac surgery
124 with CPB at the Children's Hospital of Philadelphia (CHOP). This study was approved by the
125 Institutional Review Board (IRB 11-008191) and all participating families provided informed
126 consent. Full term neonates (born at ≥ 36 weeks estimated gestational age) who required cardiac
127 surgery with cardiopulmonary bypass within the first two weeks of life were eligible for
128 inclusion. Infants who were small for gestational age (<2 kg) or who experienced neonatal
129 depression (5-minute APGAR <5 or cord pH <7), failed to undergo surgery, experienced
130 preoperative cardiac arrest requiring chest compressions, significant intracerebral hemorrhage, or
131 showed evidence of end-organ injury (AST/ALT above twice normal, creatinine >2 mg/dL, or

132 heart failure) were excluded. Patients underwent at least one prospective brain MRI (pre- or post-
133 operatively).

134
135 Patient characteristics, surgical, and medical history from the neonatal hospitalization were
136 prospectively collected in a REDCap (Research Electronic Data Capture, Nashville, TN)
137 research database hosted at CHOP. Captured variables included patient demographics (sex, race,
138 ethnicity, gestational age), birth information (type of delivery, birth weight, head circumference,
139 maternal pregnancy complications), cardiac diagnoses, genetic syndromes, surgical management,
140 and details of pre-, intra-, and postoperative clinical care. For analysis purposes, cardiac
141 diagnosis was divided into three subgroups: hypoplastic left heart syndrome (HLHS),
142 transposition of the great arteries (TGA), or other, due to the small numbers of patients with
143 diagnoses other than HLHS and TGA. Note was made of patients who received preoperative
144 cardiac catheter interventions, which included balloon atrial septostomy, atrial septal stent
145 placement, and diagnostic catheter angiograms. Subgroups for race included Black, Asian,
146 Caucasian, Native American/Pacific Islander, Mixed, other, or unknown. Ethnicity was collected
147 as either Hispanic/Latino or other.

148
149 *Cardiac Surgery*

150 All infants underwent corrective or palliative surgery with cardiopulmonary bypass (CPB) within
151 the first two weeks of life. Surgery was performed with deep hypothermic circulatory
152 arrest (DHCA) for all subjects requiring aortic arch repair. Normothermic continuous bypass
153 strategies were used for all biventricular repairs. All patients received modified ultrafiltration
154 (MUF) on termination of CPB as standard of care. The total duration of CPB, deep hypothermic
155 cardiac arrest (DHCA), and cross-clamp were calculated from anesthesia and operative records.
156 For patients receiving DHCA, the total CPB time was defined as the time from initiation of
157 bypass until the start of DHCA plus the time from the end of DHCA to removal from CPB.

158
159
160 *Neuroimaging*

161 Brain MRIs were performed under general endotracheal anesthesia immediately before the
162 neonatal cardiac surgery and approximately one-week post-surgery. MRIs were performed on a
163 single 1.5T Avanto MRI system (Siemens Medical Systems, Malvern, PA) with a 12-channel
164 head coil. Brain MRI sequences included T1-weighted magnetization-prepared rapid acquisition
165 gradient echo (T1-MPRAGE TR/TE/inversion time=1980/2.65/1100 milliseconds, flip
166 angle=15°, voxel size=0.4x0.4x1.5 mm, matrix=256x256), T2-weighted sampling perfection
167 with application-optimized contrasts using different flip angle evolution (T2-SPACE,
168 TR/TE=3200/453 milliseconds, voxel size = 0.9x0.9x2 mm, matrix=256x254), diffusion-
169 weighted imaging (DTI; TR/TE=2903/86 milliseconds; slice thickness=4 mm; b values=0,
170 1000mm/s²; 20 directions; matrix 128x128), and susceptibility-weighted imaging (SWI;
171 TR/TE=49/40 milliseconds, slice thickness=2 mm, matrix=256x177). T1- and T2-weighted
172 sequences were acquired in the axial plane and reformatted in the sagittal and coronal planes.

173
174 MRIs were reviewed by a pediatric neurologist (D.J.L.) with expertise in brain image
175 interpretation. WMI was identified by T1 hyperintensity and was rated using the validated
176 quartered point system (QPS) with increasing scale indicating increasing severity in WMI: 0
177 signifies no WMI, 1 mild WMI, 2 to 3 moderate WMI, and 4 severe WMI.¹⁹ Volumetric
178 measurements of WMI were performed by manual segmentation using ITK/SNAP.²⁰ Cerebral
179 microhemorrhage severity was determined by the number of lesions counted on SWI. We
180 considered cerebral microhemorrhage as both a dichotomous variable (either present or absent)
181 and as a continuous variable (number of lesions). We considered both the number of cerebral
182 microhemorrhages present at any given time point as well as the difference in cerebral
183 microhemorrhage number between preoperative and postoperative MRIs. Preoperative MRIs
184 were additionally evaluated for total maturation score (TMS), a previously validated
185 semiquantitative scoring system used to assess whole brain maturity across four parameters:
186 myelination, cortical infolding, involution of glial cell migration bands, and presence of germinal
187 matrix tissue.⁷

188
189 *Neurodevelopmental Assessment*

190 A subgroup of 82 patients with postoperative MRI returned for detailed neurodevelopmental
191 assessment at 18 months of age, as part of their standard clinical care. Motor, language, and
192 cognitive functions were evaluated using the Bayley-III Scales of Infants and Toddler
193 Development, which were performed by a certified child psychologist. Weight, length, and head
194 circumference were also measured on the day of testing. The composite scores for each domain
195 of this test are calculated based on comparison to normative age-matched samples. The
196 standardized Bayley's mean score of 100 (SD 15) indicates mid-average function, <85 (1 SD
197 below mean) indicates mild impairment and risk of developmental delay, and <70 (2 SD below
198 the mean) indicates moderate to severe impairment.²¹

199

200 *Statistical Analysis*

201 Summary statistics are reported as mean and standard deviation (SD) or medians and
202 interquartile ranges (IQRs) for continuous variables, as appropriate, and counts and percentages
203 for categorical variables. For each outcome, we first performed univariate analysis on each risk
204 factor, and then considered the variables with p-value <0.2 for subsequent multivariate modeling
205 using the stepwise selection approach to determine the final models. Two-sided p-values of less
206 than 0.05 were considered statistically significant. We performed all statistical analyses using R
207 (R Core Team, Vienna, Austria).

208

209 Our first analysis was to assess for preoperative risk factors that predicted the presence of
210 cerebral microhemorrhage on preoperative MRI. Due to the low incidence of preoperative
211 cerebral microhemorrhages, associations with lesion number were not examined. The association
212 for each risk factor with presence of preoperative cerebral microhemorrhages was assessed using
213 Fisher's exact test for categorical variables or Wilcoxon rank sum test for continuous variables.
214 We did not pursue multivariate modeling for preoperative cerebral microhemorrhage as none of
215 the risk factors reached a p-value of 0.2 in the univariate analysis.

216

217 Next, we performed linear regression to identify risk factors that predicted the change in number
218 of cerebral microhemorrhage from pre- to postoperative MRI with univariate and subsequent
219 multivariate analyses. In the multivariate analysis, we included risk factors that reached a p-value

220 of 0.2 in the univariate analysis, and also forced birth weight into the model as we thought it was
221 an important clinical parameter due to prior evidence of predictive utility.¹

222
223 Finally, we assessed the impact of postoperative cerebral microhemorrhages on
224 neurodevelopmental outcomes measured at 18 months. We calculated the Spearman correlation
225 coefficient between each neurodevelopmental outcome (composite scores on the cognition,
226 language, and motor tests of the Bayley-III Scales of Infant and Toddler Development; weight,
227 length, and head circumference) with postoperative cerebral microhemorrhage and additionally
228 performed linear regression to adjust for covariates of interest, including sex, gestational age,
229 duration of bypass, use of postoperative ECMO, and seizure. The impact of white matter injury
230 (total WMI volume, QPS score, TMS) on neurodevelopment was assessed using simple linear
231 regression.

232

233 **Results**

234 *Patient characteristics*

235 Of a total of 192 consented patients enrolled in the study, 183 (95.3%) received a preoperative
236 brain MRI. Reasons for not receiving an MRI included: parents rescinded consent (n=2), medical
237 instability (n=1), and unavailability of the MRI on the morning of surgery (n=6). One hundred
238 and sixty-two patients had both a pre- and postoperative MRI, 21 had only a preoperative MRI,
239 and 4 had only a postoperative MRI (Table 1, Figure 1). The median time from surgery to
240 postoperative MRI was 7 days [IQR= 5-8]. A subset of patients with postoperative
241 imaging (n=82) returned for neurodevelopmental assessment at 18 months of age and were
242 evaluated using the Bayley-III Scales of Infants and Toddler Development.

243

244 The median age of patients at the time of cardiac surgery was 4 days [IQR = 3-5 days]. The
245 majority of patients were Caucasian (n = 142; 76%) and a minority identified as Hispanic/Latino
246 (n = 13; 7%). Sixty-nine infants (37%) had a diagnosis of hypoplastic left heart syndrome
247 (HLHS) and 62 (33%) had transposition of the great arteries (TGA). The
248 remaining 56 (30%) had structural heart defects that included aortic arch anomalies (total n=25;
249 interrupted aortic arch n=8; aortic arch hypoplasia/coarctation n=8; aortic arch

250 hypoplasia/coarctation with ventricular septal defect (n=9), unbalanced common atrioventricular
251 canal (n=7), tetralogy of Fallot (n=9), Ebstein's anomaly (n=1), tricuspid atresia (n=1), right
252 ventricular aorta with pulmonary atresia (n=1), truncus arteriosus (n=2), double inlet left
253 ventricle (n=3), and double outlet right ventricle (n=7).

254

255 *Cerebral Microhemorrhage Prevalence and Distribution*

256 Of 183 infants analyzed, 42 (23%) had one or more cerebral microhemorrhage present on
257 preoperative MRI. The number of cerebral microhemorrhage in the preoperative subgroup
258 ranged from 0-9 with a median of zero (Figure 2a). CMH were distributed throughout the brain
259 in the posterior fossa (27%), deep gray matter structures (25%), and cerebral cortex/subcortical
260 white matter junction (16%) (Figure 2b).

261

262 Of 162 infants with both pre- and postoperative scans, 137 (85%) had one or more CMH on
263 postoperative MRI (Figure 2a). Of the patients in this group, the median number of CMH on
264 postoperative MRI was 3 [IQR= 1-5] and the mean change in cerebral microhemorrhage number
265 between pre- and postoperative MRI was 2 [IQR= 0-4] (representative MRIs shown in Figure
266 3). Postoperative CMH were located in the cerebral cortex/subcortical white matter junction
267 (40%), posterior fossa (45%), and deep gray matter structures (15%) (Figure 2b).

268

269 *Risk Factors for Preoperative Microhemorrhages*

270 The prevalence and severity of preoperative cerebral microhemorrhage was not affected by sex,
271 gestational age, delivery type (vaginal vs. cesarean section), or cardiac diagnosis (Table
272 2). Additionally, there was no significant association with race, ethnicity, gestational factors
273 (i.e., maternal hypertension, diabetes, preeclampsia), total maturation score (TMS), or
274 preoperative arrhythmia. However, the small number of patients within each of these subgroups
275 limited the ability to detect any potentially significant effects. Of 40 patients who had catheter
276 interventions before surgery, 12 (30%) had cerebral microhemorrhage present, which was not
277 statistically different from patients without such interventions (30/143 or 21% with cerebral
278 microhemorrhage, p=0.29). Stroke as a consequence of balloon atrial septostomy (BAS) was not
279 seen in this cohort.

280 *Risk Factors for Postoperative Microhemorrhages*

281 The median duration of CPB was 49 minutes [IQR= 39-74 min]. Longer duration of CPB was
282 the risk factor most strongly associated with new or increased number of postoperative cerebral
283 microhemorrhages ($p < 0.0001$) (Figure 4a). Specifically, patients with postoperative cerebral
284 microhemorrhages experienced a median CPB duration of 51 minutes [IQR= 40-84 min],
285 compared to non-CMH patients who had a median CPB duration of 40 minutes [IQR= 30-44
286 min]. Additionally, need for postoperative ECMO support ($p = 0.0004$), presence
287 of postoperative seizure(s) ($p = 0.02$), and low birth weight (defined as $< 2500\text{g}$) ($p = 0.03$) were
288 associated with worsened severity of postoperative cerebral microhemorrhage (Table 3). Age-at-
289 surgery ($p = 0.3$), duration of DHCA ($p = 0.3$), lowest brain temperature ($p = 0.98$), maximum
290 ACT ($p = 0.2$), intra-operative arrhythmia ($p = 0.3$), and postoperative cardiac arrest ($p = 0.7$)
291 were not associated with change in number of cerebral microhemorrhage.

292

293 *Neurodevelopmental Outcomes*

294 A subset of 82 patients with postoperative MRI underwent neurodevelopmental assessment using
295 the Bayley-III Scales of Infants and Toddler Development at 18 months of age (Table 4).
296 Neurodevelopmental testing revealed a wide range of composite scores for cognitive (53 - 125),
297 motor (61 - 120), and language (47 - 129) function. The mean composite scores for
298 cognitive, motor, and language function were 94 [SD \pm 12], 92 [SD \pm 12], and 89 [SD \pm 16],
299 respectively. While these scores indicate mid-average function for the cohort as a whole, 48%
300 ($n=39$) of children in our cohort demonstrated below average neurodevelopmental function in at
301 least one domain, defined as a Bayley's score falling below 1SD of the mean. Additionally, 17%
302 ($n=14$) showed pronounced impairment, falling below 2SD of the mean in at least one domain.
303 Specifically, 5% ($n=4$) had moderate to severe cognitive impairment, 13% ($n=11$) had moderate
304 to severe language impairment, and 5% ($n=4$) had moderate to severe motor impairment. Four
305 patients had severe impairment in more than one domain, and one patient fell below 2SD of the
306 mean in all three domains. Severity of cerebral microhemorrhage on postoperative MRI was
307 associated with lower composite scores on the motor Bayley-III scales in both univariate
308 ($p=0.001$) and multivariate ($p=0.012$) analysis (Figure 4b). The simple linear regression analysis

309 suggested that with every one-point increase in CMH number, the Bayley-III motor score was
310 predicted to decrease on average by 0.94 point (95% CI: 0.39-1.50). Lower composite
311 cognitive scales were associated with cerebral microhemorrhage number on univariate ($p=0.023$)
312 but not multivariate analysis ($p = 0.118$); use of postoperative ECMO was associated with lower
313 composite cognitive score in multivariate analysis ($p=0.007$). The simple linear regression
314 analysis suggested a 0.66 point decrease (95% CI: 0.09-1.22) in average Bayley-III cognitive
315 score for every one-point increase in CMH number (Figure 4c).

316
317 Cerebral microhemorrhage was not associated with language function scores ($p = 0.064$), weight
318 ($p = 0.352$), length ($p = 0.712$), or head-circumference ($p = 0.185$) in univariate analysis; these
319 variables were not included in multivariate analyses. The slope was not significant in simple
320 linear regression where the regression equation was $y=-0.80x +92$. Male sex was associated with
321 a lower motor composite score on multivariate analysis ($p = 0.027$). In this cohort using simple
322 linear regression analysis, WMI (total WMI volume and QPS score, respectively) was not
323 associated with lower composite scores on cognition ($p = 0.680$; $p = 0.352$), motor ($p = 0.906$; p
324 $= 0.497$), or language ($p = 0.827$; $p = 0.857$). Similarly, total maturation score (TMS) was not
325 associated with lower composite scores on cognition ($p = 0.989$), motor ($p = 0.595$), or language
326 ($p = 0.421$) in simple linear regression.

327

328 **Discussion**

329

330 A major finding of our study is that CMH are not merely incidental findings but have clinical
331 relevance as a prognostic imaging biomarker. The presence and severity of postoperative
332 cerebral microhemorrhage are associated with impaired neurodevelopmental outcomes on the
333 motor tests of the Bayley-III Scales of Infant and Toddler Development at 18 months of age.
334 Specifically, for every one-point increase in CMH number, the Bayley-III motor score was
335 predicted to decrease on average by 0.94 point (95% CI: 0.39-1.50) while the average Bayley-III
336 cognitive score was predicted to decrease by 0.66 point (95% CI: 0.09-1.22). This finding is
337 consistent with a prior study in this patient population that found that patients with cerebral
338 microhemorrhage on MRI at one year of age had a 10-point lower score on the

339 psychomotor development index (PDI) when compared to those without cerebral
340 microhemorrhage.²² Our finding underscores the importance of reducing cerebral
341 microhemorrhage burden.

342

343 *Risk factors for Preoperative CMH*

344 The high prevalence of preoperative cerebral microhemorrhage in our cohort indicates that
345 antenatal or preoperative factors contribute to risk for cerebral microhemorrhage. Although none
346 of the antenatal and preoperative risk factors analyzed in this study was associated
347 with the presence of preoperative cerebral microhemorrhage, we note that many of
348 these analyses were underpowered to detect potentially meaningful differences. While previous
349 studies have reported focal brain injury on preoperative MRI in infants with CHD who
350 underwent the BAS procedure,^{8,23} catheter interventions on the atrial septum were not a predictor
351 for CMH in our cohort. Stroke as a consequence of BAS was not seen in this cohort.

352

353 *Risk Factors for Postoperative CMH*

354 We found longer duration of CPB to be the strongest predictor of an increased number of
355 cerebral microhemorrhages on postoperative MRI. With CPB duration > 70 minutes, the median
356 number of cerebral microhemorrhage was more than 2-fold higher compared to duration under
357 70 minutes. This finding is consistent with prior studies and may be the result of prolonged blood
358 exposure to synthetic surfaces resulting in inflammation or embolic debris from the bypass
359 machine.^{24,25} Moreover, the gross movement of brain tissue caused either by cerebral edema
360 resulting from CPB or cerebral dehydration resulting from Lasix use may contribute to axonal
361 stretching and the rupture of local vascular supply to affected brain tissue. This mechanism of
362 injury is similar to that inflicted by trauma in diffuse axonal injury.^{17,26} Our analysis also showed
363 that intra-operative factors including nadir temperature, duration of DHCA, and maximum
364 activated clotting time (ACT) were not risk factors for cerebral microhemorrhages. We had
365 hypothesized that deep hypothermia which can lead to brain shrinkage or water crystallization
366 would be a risk factor, but our results did not support this.

367

368 In addition to the duration of CPB, the use of postoperative ECMO was also associated with
369 increased postoperative CMH burden. Both CPB and ECMO are forms of extracorporeal support
370 that likely share similar mechanisms of cerebral injury. As previously mentioned, systemic
371 inflammation is triggered by prolonged patient contact with non-physiologic circuit components
372 (i.e., pump and oxygenator) causing disruption to blood brain barrier integrity, and contributing
373 to microvascular fragility.^{27,28} Infants with CHD have known structural brain immaturity^{7,15,} and
374 therefore may be more vulnerable to developing cerebral microhemorrhages with the use of
375 extracorporeal support, as such interventions commonly impair cerebral autoregulation and cause
376 hemodynamic instability that may further precipitate small vessel rupture.^{27,29} The use of
377 anticoagulants with extracorporeal support may further contribute to cerebral microhemorrhage
378 risk although we did not detect an association between intraoperative activated clotting time
379 (ACT) and post-operative microhemorrhages in our cohort.²⁸ Importantly, while these
380 phenomena may explain the observed increase in postoperative microhemorrhages, they do not
381 explain their presence preoperatively.

382
383 We report postoperative seizure and low birth weight as additional risk factors
384 for postoperative cerebral microhemorrhage, which have not been previously reported to the best
385 of our knowledge. It is not possible to determine whether seizure is a consequence or cause of
386 cerebral microhemorrhage burden. However, as the prevalence of CMH was common (85%) and
387 the prevalence of seizures relatively uncommon (9%), we believe them to be a consequence of
388 CMH. Furthermore, prior research has shown that longer duration of CPB in infants undergoing
389 CHD repair is a risk factor for postoperative seizure.^{30,31} Thus, both cerebral microhemorrhage
390 and seizures may be sequelae due to a common underlying risk factor, though the presence of
391 seizures may amplify the severity of the CMH. Seizures after neonatal cardiac surgery have been
392 associated with worse long-term neurodevelopmental outcomes.^{30,31} Lower birth
393 weight has previously been associated with higher mortality rates, poorer growth trajectories,
394 and greater neurodevelopmental impairment.¹⁹ Future research investigating cerebral
395 microhemorrhage in this population should evaluate the relationship between cerebral
396 microhemorrhage, seizure, and lower birth weight.

397

398 *Pathophysiology*

399 Cerebral microhemorrhage are most commonly reported in adult and elderly populations with
400 several proposed underlying pathophysiologies. For example, diffuse axonal injury caused by
401 rapid acceleration and deceleration of the brain in traumatic brain injury leads to mechanical
402 stretching of axons.²⁶ This stretching can trigger mitochondrial dysfunction, oxidative stress, and
403 increased activity of metalloproteinases contributing to damage and dysfunction of the local
404 microvasculature possibly giving rise to cerebral microhemorrhages.²⁶ In contrast, cerebral
405 microhemorrhages have also been widely detected in Alzheimer's disease (AD) where they are
406 thought to arise from inflammatory processes triggered by the accumulation of amyloid beta, tau,
407 and cellular debris that characterize this disease.³² This proposed mechanism is supported by a
408 previous study in AD patients that found an association between cerebral microhemorrhage and
409 amyloid beta and tau load.³³

410
411 We propose that a potential link between the mechanisms that give rise to cerebral
412 microhemorrhages in adult and infant populations may be disruption to neurofluid balance via
413 the glymphatic circulation. The glymphatic system is a waste clearance pathway within the brain
414 that involves the exchange of cerebral spinal fluid (CSF) and interstitial fluid (ISF) to facilitate
415 the removal of metabolic waste that accumulates in the brain during awake periods.³⁴ Proteins
416 and other metabolic waste products accumulate in the brain during waking hours due to the
417 blood brain barrier which prevents their movement into systemic circulation and subsequent
418 elimination from the body. Therefore, sleep is critical as a temporal regulator of the glymphatic
419 system, facilitating fluid transport and promoting waste clearance.³⁴ Disruption to metabolic
420 waste removal via the glymphatic system has been implicated in Alzheimer's disease (AD) and
421 other neurodegenerative processes, where impaired glymphatic flow is thought to exacerbate the
422 protein aggregation that is characteristic of these pathologies.^{34,35} Both CPB and DHCA may act
423 to impede or disrupt normal neurofluid flow and metabolic waste clearance.

424
425 While cerebral microhemorrhage in the context of CHD is thought to be the result of debris and/
426 or inflammation from the CMB/ECMO circuit, this does not explain our observations of

427 preoperative CMH. We propose that disruption to the glymphatic system and neurofluid
428 clearance may contribute to CMH generation in this period. Glymphatic flow is driven by arterial
429 pulsations generated by cardiac activity³⁴ and therefore low cardiac ejection fraction, as seen in
430 CHD infants, contributes to poor glymphatic flow and compromised metabolic waste clearance.
431 Such disruptions to neurofluid circulation may leave the vasculature susceptible to oxidative
432 stress and inflammatory processes that give rise to CMH via an AD-like mechanism.
433 Alternatively, impaired neurofluid circulation may contribute to local swelling and dehydration
434 of the brain that may give rise to CMH via a TBI-like mechanism.

435
436 Cardiovascular impairment for infants with CHD begins in utero and contributes to brain
437 immaturity at birth with a delay of approximately 1 month of development.⁷ Such immaturity
438 may be the result of placental insufficiency and a mismatch in oxygenation due to placental
439 thrombosis or insufficient branching.^{36,37} This is supported by the recent finding that increased
440 placental weight is protective against WMI.¹¹ The glymphatic system may provide a link
441 connecting cardiovascular risk factors to cerebrovascular health in this critical time period when
442 there is enhanced fragility of small cerebral vessels which make them more vulnerable to
443 developing pre-operative CMH. Understanding the role of the glymphatic system in cerebral
444 microhemorrhage may provide insights into its underlying pathophysiology and provide potential
445 therapeutic strategies to mitigate the clinical burden of these lesions. However, further research
446 is needed to fully elucidate the role of the glymphatic system in cerebral microhemorrhage
447 accrual in this population.

448 449 *Limitations*

450 There are several limitations to this study. Although patients were prospectively enrolled, we
451 were limited by the data available from this cohort in our retrospective analysis. Specifically, not
452 all patients received both pre- and postoperative MRI. Only a subset of patients in our cohort (n
453 = 82) returned for neurodevelopmental assessment, which could contribute to selection bias.
454 Furthermore, there may be a contribution of genetic syndrome that is separately affecting
455 neurodevelopmental outcomes, which could not be analyzed in this study due to the low numbers
456 of infants with a known genetic diagnosis in our cohort.

457 We were also limited in our selection of risk factors to demographic factors and medical
458 management factors that were relatively easy to abstract from the clinical record. Neonatal
459 cardiac critical care is highly variable, and we were not able to capture all medications that were
460 used (e.g., anticoagulants, pressors, or diuretics) or every clinical event (e.g., transient
461 hypoxemia or apnea). There are likely many factors that contribute to cerebral microhemorrhage
462 risk that are difficult to quantify. Further, at the time of patient recruitment, the preferred surgical
463 strategy for aortic arch repair involved the use of DHCA, and it is unknown whether antegrade
464 cerebral perfusion strategies are worse (longer CPB times) or protective for CMH.

465

466 Finally, our analysis of preoperative risk factors for cerebral microhemorrhage was
467 underpowered to detect potentially meaningful associations. Future multi-center retrospective
468 and prospective studies are needed to increase the sample size and help in better characterizing
469 the risk of cerebral microhemorrhage in this population.

470

471 *Conclusions*

472 Our data shows that cerebral microhemorrhage is a clinically significant problem in infants with
473 severe CHD. We report both a high postoperative prevalence of cerebral microhemorrhage and
474 an association between cerebral microhemorrhage on postoperative MRI and impaired
475 neurodevelopmental outcomes at 18 months of age. Longer duration of CPB was the most
476 significant risk factor associated with new or worsened postoperative cerebral microhemorrhage.
477 Surgical factors, however, are not the only cause of cerebral microhemorrhage given the
478 substantial preoperative prevalence observed. Further research is needed to better understand the
479 mechanism of injury and to elucidate preoperative and postoperative cerebral microhemorrhage
480 risk. The design of neuroprotection strategies to mitigate risk factors for cerebral
481 microhemorrhage may improve neurodevelopmental outcomes in this vulnerable population.

482

483 **References**

484

- 485 1. Gaynor JW, Stopp C, Wypij D, Andropoulos DB, Atallah J, Atz AM, Beca J, Donofrio
486 MT, Duncan K, Ghanayem NS, et al. Neurodevelopmental outcomes after cardiac
487 surgery in infancy. *Pediatrics*. 2015;135:816-825. doi: 10.1542/peds.2014-3825

- 488 2. Snookes SH, Gunn JK, Eldridge BJ, Donath SM, Hunt RW, Galea MP, Shekerdemian L.
489 A systematic review of motor and cognitive outcomes after early surgery for congenital
490 heart disease. *Pediatrics*. 2010;125:e818-827. doi: 10.1542/peds.2009-1959
- 491 3. Karsdorp PA, Everaerd W, Kindt M, Mulder BJ. Psychological and cognitive functioning
492 in children and adolescents with congenital heart disease: a meta-analysis. *J Pediatr*
493 *Psychol*. 2007;32:527-541. doi: 10.1093/jpepsy/jsl047
- 494 4. Mebius MJ, Kooi EMW, Bilardo CM, Bos AF. Brain Injury and Neurodevelopmental
495 Outcome in Congenital Heart Disease: A Systematic Review. *Pediatrics*. 2017;140. doi:
496 10.1542/peds.2016-4055
- 497 5. Verrall CE, Yang JYM, Chen J, Schembri A, d'Udekem Y, Zannino D, Kasparian NA, du
498 Plessis K, Grieve SM, Welton T, et al. Neurocognitive Dysfunction and Smaller Brain
499 Volumes in Adolescents and Adults With a Fontan Circulation. *Circulation*.
500 2021;143:878-891. doi: 10.1161/CIRCULATIONAHA.120.048202
- 501 6. White BR, Rogers LS, Kirschen MP. Recent advances in our understanding of
502 neurodevelopmental outcomes in congenital heart disease. *Curr Opin Pediatr*.
503 2019;31:783-788. doi: 10.1097/MOP.0000000000000829
- 504 7. Licht DJ, Shera DM, Clancy RR, Wernovsky G, Montenegro LM, Nicolson SC,
505 Zimmerman RA, Spray TL, Gaynor JW, Vossough A. Brain maturation is delayed in
506 infants with complex congenital heart defects. *J Thorac Cardiovasc Surg*. 2009;137:529-
507 536; discussion 536-527. doi: 10.1016/j.jtcvs.2008.10.025
- 508 8. Petit CJ, Rome JJ, Wernovsky G, Mason SE, Shera DM, Nicolson SC, Montenegro LM,
509 Tabbutt S, Zimmerman RA, Licht DJ. Preoperative brain injury in transposition of the
510 great arteries is associated with oxygenation and time to surgery, not balloon atrial
511 septostomy. *Circulation*. 2009;119:709-716. doi:
512 10.1161/CIRCULATIONAHA.107.760819
- 513 9. Miller SP, McQuillen PS, Hamrick S, Xu D, Glidden DV, Charlton N, Karl T, Azakie A,
514 Ferriero DM, Barkovich AJ, et al. Abnormal brain development in newborns with
515 congenital heart disease. *N Engl J Med*. 2007;357:1928-1938. doi:
516 10.1056/NEJMoa067393
- 517 10. Lynch JM, Licht DJ. First things first: The importance of the preoperative period for
518 neurocognitive outcomes in hypoplastic left heart syndrome. *J Thorac Cardiovasc Surg*.
519 2016;151:1367-1368. doi: 10.1016/j.jtcvs.2016.03.001
- 520 11. Licht DJ, Jacobowitz M, Lynch JM, Ko T, Boorady T, Devarajan M, Heye KN, Mensah-
521 Brown K, Newland JJ, Schmidt A, et al. Impaired Maternal-Fetal Environment and Risk
522 for Preoperative Focal White Matter Injury in Neonates With Complex Congenital Heart
523 Disease. *J Am Heart Assoc*. 2023;12:e025516. doi: 10.1161/JAHA.122.025516
- 524 12. Viswanathan A, Chabriat H. Cerebral microhemorrhage. *Stroke*. 2006;37:550-555. doi:
525 10.1161/01.STR.0000199847.96188.12
- 526 13. Petraut M, Casolla B, Ouk T, Cordonnier C, Berezowski V. Cerebral microbleeds:
527 Beyond the microscope. *Int J Stroke*. 2019;14:468-475. doi: 10.1177/1747493019830594
- 528 14. Fazekas F, Kleinert R, Roob G, Kleinert G, Kapeller P, Schmidt R, Hartung HP.
529 Histopathologic analysis of foci of signal loss on gradient-echo T2*-weighted MR
530 images in patients with spontaneous intracerebral hemorrhage: evidence of
531 microangiopathy-related microbleeds. *AJNR Am J Neuroradiol*. 1999;20:637-642.

- 532 15. Ungvari Z, Tarantini S, Kirkpatrick AC, Csiszar A, Prodan CI. Cerebral
533 microhemorrhages: mechanisms, consequences, and prevention. *Am J Physiol Heart Circ*
534 *Physiol.* 2017;312:H1128-H1143. doi: 10.1152/ajpheart.00780.2016
- 535 16. Shams S, Martola J, Granberg T, Li X, Shams M, Fereshtehnejad SM, Cavallin L,
536 Aspelin P, Kristoffersen-Wiberg M, Wahlund LO. Cerebral microbleeds: different
537 prevalence, topography, and risk factors depending on dementia diagnosis-the Karolinska
538 Imaging Dementia Study. *AJNR Am J Neuroradiol.* 2015;36:661-666. doi:
539 10.3174/ajnr.A4176
- 540 17. de Haan S, de Groot JC, Jacobs B, van der Naalt J. The association between
541 microhaemorrhages and post - traumatic functional outcome in the chronic phase after
542 mild traumatic brain injury. *Neuroradiology.* 2017;59:963-969. doi: 10.1007/s00234-017-
543 1898-8
- 544 18. Akoudad S, Wolters FJ, Viswanathan A, de Bruijn RF, van der Lugt A, Hofman A,
545 Koudstaal PJ, Ikram MA, Vernooij MW. Association of Cerebral Microbleeds With
546 Cognitive Decline and Dementia. *JAMA Neurol.* 2016;73:934-943. doi:
547 10.1001/jamaneurol.2016.1017
- 548 19. McCarthy AL, Winters ME, Busch DR, Gonzalez-Giraldo E, Ko TS, Lynch JM, Schwab
549 PJ, Xiao R, Buckley EM, Vossough A, et al. Scoring system for periventricular
550 leukomalacia in infants with congenital heart disease. *Pediatr Res.* 2015;78:304-309. doi:
551 10.1038/pr.2015.99
- 552 20. Yushkevich PA, Piven J, Hazlett HC, Smith RG, Ho S, Gee JC, Gerig G. User-guided 3D
553 active contour segmentation of anatomical structures: significantly improved efficiency
554 and reliability. *Neuroimage.* 2006;31:1116-1128. doi: 10.1016/j.neuroimage.2006.01.015
- 555 21. Del Rosario C, Slevin M, Molloy EJ, Quigley J, Nixon E. How to use the Bayley Scales
556 of Infant and Toddler Development. *Arch Dis Child Educ Pract Ed.* 2021;106:108-112.
557 doi: 10.1136/archdischild-2020-319063
- 558 22. Soul JS, Robertson RL, Wypij D, Bellinger DC, Visconti KJ, du Plessis AJ, Kussman
559 BD, Scoppettuolo LA, Pigula F, Jonas RA, et al. Subtle hemorrhagic brain injury is
560 associated with neurodevelopmental impairment in infants with repaired congenital heart
561 disease. *J Thorac Cardiovasc Surg.* 2009;138:374-381. doi: 10.1016/j.jtcvs.2009.02.027
- 562 23. McQuillen PS, Hamrick SE, Perez MJ, Barkovich AJ, Glidden DV, Karl TR, Teitel D,
563 Miller SP. Balloon atrial septostomy is associated with preoperative stroke in neonates
564 with transposition of the great arteries. *Circulation.* 2006;113:280-285. doi:
565 10.1161/CIRCULATIONAHA.105.566752
- 566 24. Kim PPC, Nasman BW, Kinne EL, Oyoyo UE, Kido DK, Jacobson JP. Cerebral
567 Microhemorrhage: A Frequent Magnetic Resonance Imaging Finding in Pediatric
568 Patients after Cardiopulmonary Bypass. *J Clin Imaging Sci.* 2017;7:27. doi:
569 10.4103/jcis.JCIS_29_17
- 570 25. Niwa T, Aida N, Takahara T, Kwee TC, Fujita K, Shishikura A, Miyata D, Inoue T.
571 Imaging and clinical characteristics of children with multiple foci of microsusceptibility
572 changes in the brain on susceptibility-weighted MRI. *Pediatr Radiol.* 2010;40:1657-
573 1662. doi: 10.1007/s00247-010-1665-z

- 574 26. Toth L, Czigler A, Horvath P, Kornyei B, Szarka N, Schwarcz A, Ungvari Z, Buki A,
575 Toth P. Traumatic brain injury-induced cerebral microbleeds in the elderly. *Geroscience*.
576 2021;43:125-136. doi: 10.1007/s11357-020-00280-3
- 577 27. Wan S, LeClerc JL, Vincent JL. Inflammatory response to cardiopulmonary bypass:
578 mechanisms involved and possible therapeutic strategies. *Chest*. 1997;112:676-692. doi:
579 10.1378/chest.112.3.676
- 580 28. Warren OJ, Smith AJ, Alexiou C, Rogers PL, Jawad N, Vincent C, Darzi AW,
581 Athanasiou T. The inflammatory response to cardiopulmonary bypass: part 1--
582 mechanisms of pathogenesis. *J Cardiothorac Vasc Anesth*. 2009;23:223-231. doi:
583 10.1053/j.jvca.2008.08.007
- 584 29. Wei D, Azen C, Bhombal S, Hastings L, Paquette L. Congenital heart disease in low-
585 birth-weight infants: effects of small for gestational age (SGA) status and maturity on
586 postoperative outcomes. *Pediatr Cardiol*. 2015;36:1-7. doi: 10.1007/s00246-014-0954-y
- 587 30. Naim MY, Gaynor JW, Chen J, Nicolson SC, Fuller S, Spray TL, Dlugos DJ, Clancy RR,
588 Costa LV, Licht DJ, et al. Subclinical seizures identified by postoperative
589 electroencephalographic monitoring are common after neonatal cardiac surgery. *J Thorac*
590 *Cardiovasc Surg*. 2015;150:169-178; discussion 178-180. doi:
591 10.1016/j.jtcvs.2015.03.045
- 592 31. Bellingier DC, Wypij D, Rivkin MJ, DeMaso DR, Robertson RL, Jr., Dunbar-Masterson
593 C, Rappaport LA, Wernovsky G, Jonas RA, Newburger JW. Adolescents with d-
594 transposition of the great arteries corrected with the arterial switch procedure:
595 neuropsychological assessment and structural brain imaging. *Circulation*.
596 2011;124:1361-1369. doi: 10.1161/CIRCULATIONAHA.111.026963
- 597 32. Cordonnier C, van der Flier WM. Brain microbleeds and Alzheimer's disease: innocent
598 observation or key player? *Brain*. 2011;134:335-344. doi: 10.1093/brain/awq321
- 599 33. Rauchmann BS, Ghaseminejad F, Mekala S, Perneczky R, Alzheimer's Disease
600 Neuroimaging I. Cerebral Microhemorrhage at MRI in Mild Cognitive Impairment and
601 Early Alzheimer Disease: Association with Tau and Amyloid beta at PET Imaging.
602 *Radiology*. 2020;296:134-142. doi: 10.1148/radiol.2020191904
- 603 34. Nedergaard M, Goldman SA. Glymphatic failure as a final common pathway to
604 dementia. *Science*. 2020;370:50-56. doi: 10.1126/science.abb8739
- 605 35. Song AK, Hett K, Eisma JJ, McKnight CD, Elenberger J, Stark AJ, Kang H, Yan Y,
606 Considine CM, Donahue MJ, et al. Parasagittal dural space hypertrophy and amyloid-beta
607 deposition in Alzheimer's disease. *Brain Commun*. 2023;5:fcad128. doi:
608 10.1093/braincomms/fcad128
- 609 36. Schlatterer SD, Murnick J, Jacobs M, White L, Donofrio MT, Limperopoulos C.
610 Placental Pathology and Neuroimaging Correlates in Neonates with Congenital Heart
611 Disease. *Sci Rep*. 2019;9:4137. doi: 10.1038/s41598-019-40894-y
- 612 37. Leon RL, Mir IN, Herrera CL, Sharma K, Spong CY, Twickler DM, Chalak LF.
613 Neuroplacentology in congenital heart disease: placental connections to
614 neurodevelopmental outcomes. *Pediatr Res*. 2022;91:787-794. doi: 10.1038/s41390-021-
615 01521-7

616
617

618 **Acknowledgements**

619 We extend our heartfelt appreciation to all those who contributed to this research including the
620 Cardiac Kids Developmental Follow-up Program at CHOP. We are deeply grateful to the
621 patients and their families who participated in this study and without whom this work would not
622 be possible.

623

624 **Source of Funding**

625 This study was supported by the National Institutes of Health (NIH R01 NS072338) and the
626 Steve and June Wolfson Family Foundation. BRW is supported by the National Institute of
627 Neurological Disorders and Stroke (K08 NS117897).

628

629 **Disclosures**

630 None

631

632

633

634

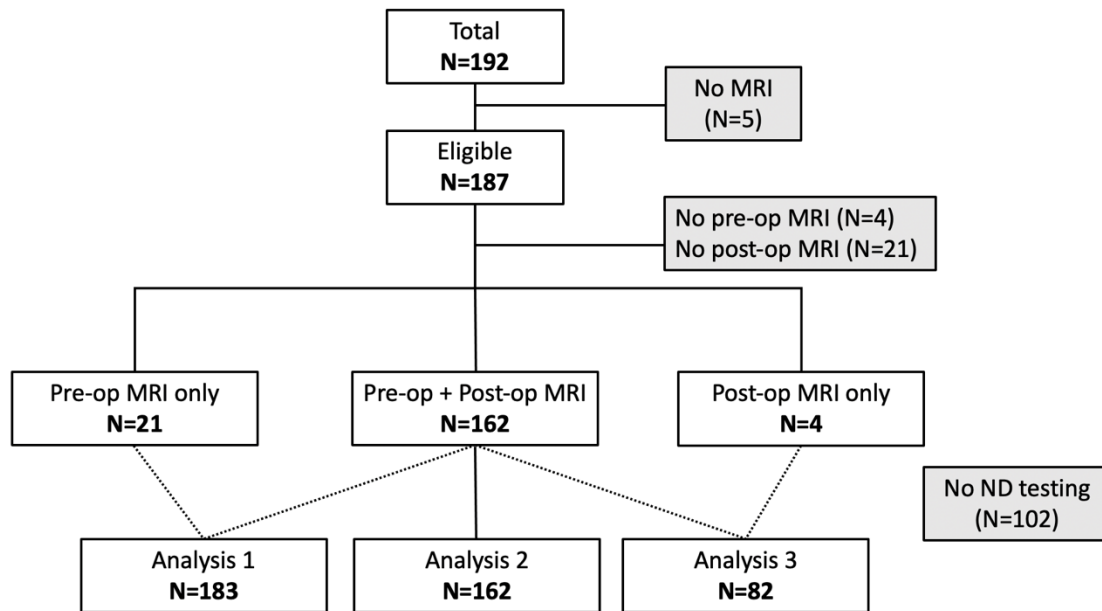
635

636

637

638

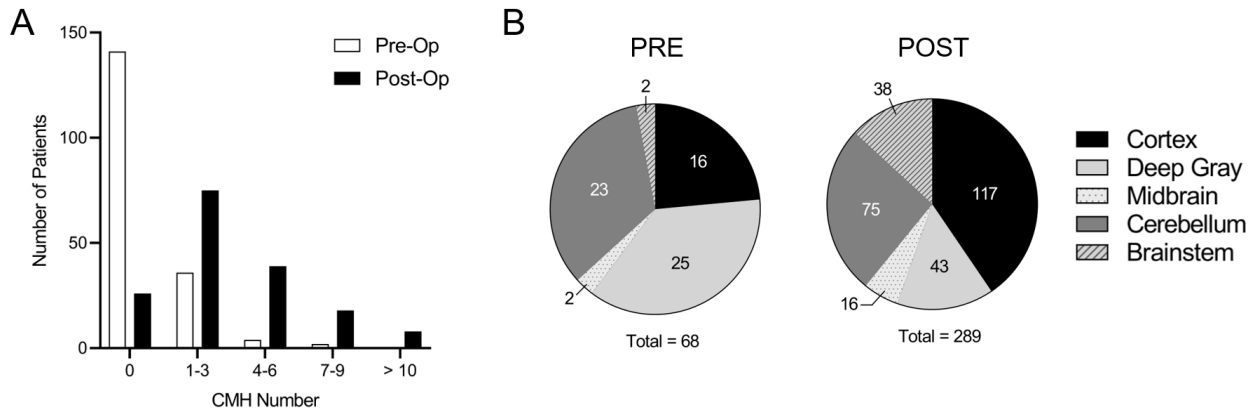
639



640

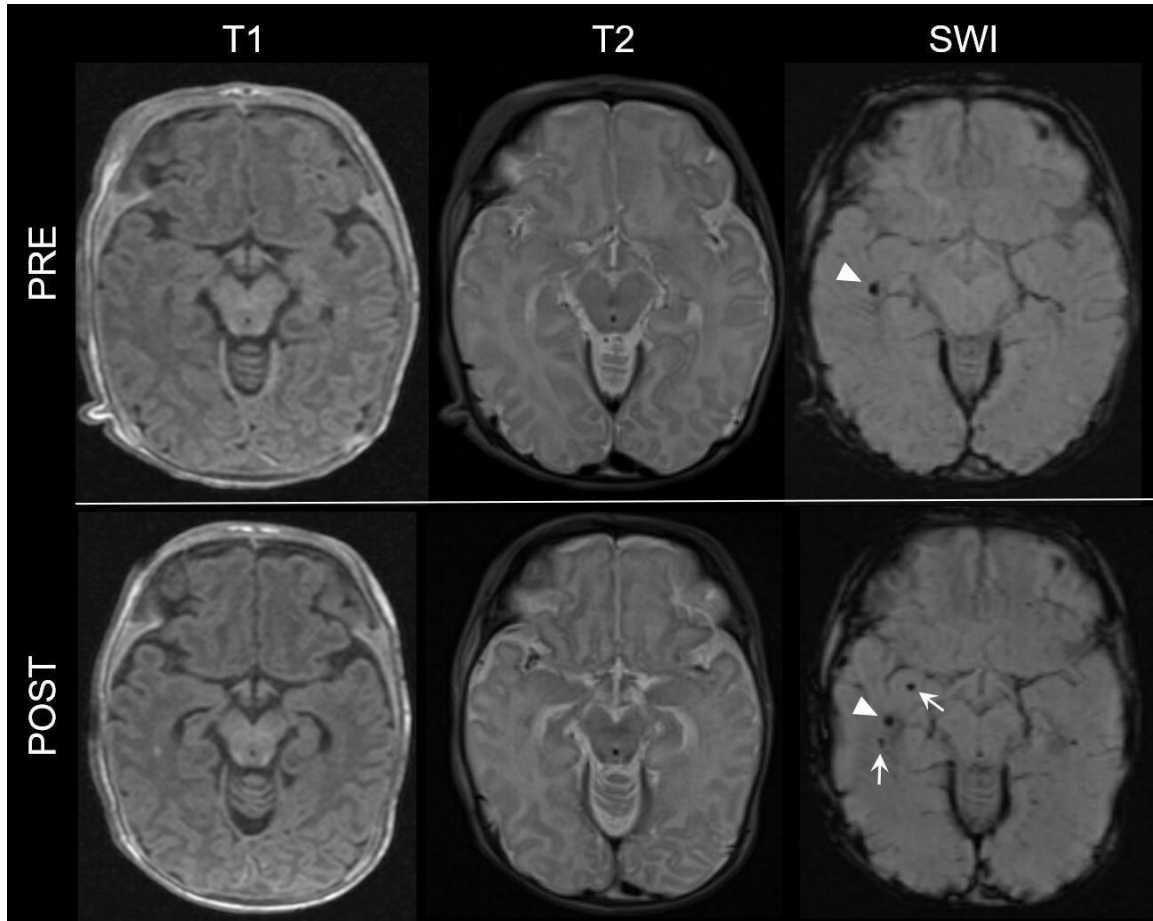
641 **Figure 1. Flowchart of included patients in study analysis.** Analysis 1 includes patients with
642 preoperative MRI; Analysis 2, patients with pre- and postoperative MRI; Analysis 3, patients
643 with postoperative MRI and neurodevelopmental outcomes. MRI indicates magnetic resonance
644 imaging; ND, neurodevelopmental outcomes; pre-op, preoperative; post-op, postoperative.

645



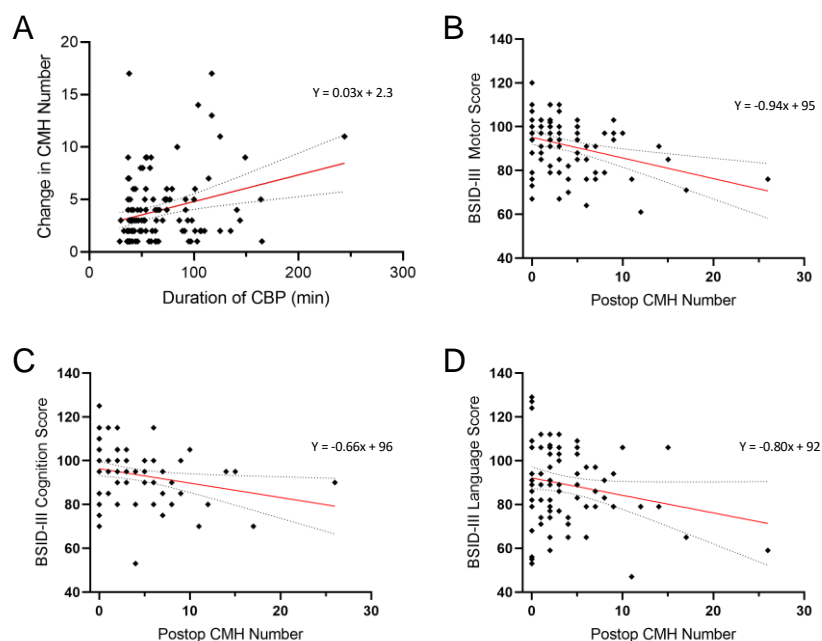
646
647 **Figure 2. (a) Increased prevalence of cerebral microhemorrhage (CMH) on postoperative**
648 **scans compared to preoperative imaging.** White bars indicate patients with pre-operative
649 **imaging.** Black bars indicate patients with postoperative imaging. **(b) Location of cerebral**
650 **microhemorrhage (CMH) on preoperative vs postoperative brain magnetic resonance**
651 **imaging (MRI).** Cortex refers to CMH in both the cortex proper and subcortical white matter
652 **junction.** Pre indicates preoperative; Post, postoperative.

653
654
655
656



657
658 **Figure 3. Representative magnetic resonance imaging (MRI) of a single patient with pre-**
659 **and postoperative cerebral microhemorrhage.** CMH are often not visible on T1-weighted or
660 T2-weighted MRI but are visible on susceptibility weighted imaging (SWI). Arrowheads
661 demarcate cerebral microhemorrhage present on both preoperative and postoperative SWI.
662 Arrows highlight the accrual of additional CMH on postoperative SWI. T1 indicates T1-
663 weighted MRI; T2, T2-weighted MRI; SWI, susceptibility weighted imaging; Pre, preoperative;
664 Post, postoperative

665
666
667
668
669
670
671
672
673
674
675



676
677 **Figure 4. (a) Increased duration of cardiopulmonary bypass (CPB) is a significant risk**
678 **factor for worsened cerebral microhemorrhage severity ($p < 0.0001$).** Cerebral
679 microhemorrhage severity is defined as an increased number of CMH. **(b) The higher total**
680 **number of cerebral microhemorrhages on postoperative scans is associated with lower**
681 **composite motor scores at 18 months old ($p = 0.012$) (c-d) Higher total number of cerebral**
682 **microhemorrhages on postoperative scans is not associated with lower composite cognition**
683 **($p = 0.12$) or language scores ($p = 0.06$).** CMH indicates cerebral microhemorrhage; BSID-III
684 indicates neurodevelopmental testing using Bayley-III Scales of Infant and Toddler Development
685 at 18 months; postop, postoperative.

686
687
688
689
690
691
692
693
694
695
696
697
698
699
700

Patient Characteristics, median [IQR] or n (%)	Preop MRI	Preop to Postop MRI Comparison	ND outcomes
Demographics	N = 183	N = 162	N = 82
Gestational age at birth, week	39 [38-40]	39 [38-39]	39 [38-39]
Birth weight, kg	3 [3-4]	3 [3-4]	3 [3-4]
Head Circumference, cm	34 [33-35]	34 (33-35)	34 (33-35)
Female	77 (42)	68 (42)	41 (50)
Caucasian	138 (75)	121 (75)	62 (76)
Black	21 (11)	18 (11)	9 (11)
Asian	2 (1)	4 (2)	0 (0)
Latino	13 (7)	10 (6)	5 (6)
Vaginal delivery	106 (58)	95 (59)	52 (63)
Cardiac Diagnosis			
HLHS	68 (37)	57 (35)	27 (33)
TGA	59 (32)	53 (32)	22 (27)
Other	56 (31)	51 (31)	33 (40)
Preoperative Factors			
Cardiac catheter intervention	39 (21)	35 (22)	15 (18)
Arrhythmia	12 (6.6)	9 (5.6)	6 (7)
Hemoglobin* (g/dL)	15 [13-16]	15 [13-16]	14 [13-16]
Platelets** (10 ³ /uL)	268 [222-315]	274 [226-318]	294 [231-360]
Patients with WMI	40 (22)	-	-
WMI volume	0 [0-0]	-	-
QPS score	0 [0-0]	-	-
TMS score	10 [9-11]	-	-
Surgical factors			
Age at surgery, days	4 [3-5]	4 [3-5]	4 [3-6]
CPB duration, min	49 [39-76]	49 [39-74]	45 [39-68]
Cross clamp duration, min	45 [38-60]	44 [37-59]	42 [36-51]
DHCA duration, min	33 [0-44]	32 [0-43]	33 [0-42]
Maximum ACT, sec	861 [662-1500]	887 [661-1500]	805 [677-1318]
Intra-operative arrhythmia	27 (15)	20 (12)	11 (13)
Postoperative Factors			
ECMO support	7 (3.8)	4 (2.5)	4 (5)
Seizure	17 (9.3)	16 (9.9)	12 (15)
Cardiac arrest	13 (7.1)	10 (6.2)	7 (9)
Hemoglobin* (g/dL)	13 [11-15]	13 [11-15]	14 [11-16]
Platelets** (10 ³ /uL)	102 [75-163]	102 [75-163]	106 [78-157]
Patients with WMI	-	37 (23)	23 (28)

WMI volume	-	19 [0-89]	21 [0-124]
QPS score	-	1 [0-2]	1 [0-2]

701 *Hemoglobin values were collected from blood gas records within 72 hours of surgery

702 **Platelet values were collected from blood gas records within 72 hours of surgery

703

704 **Table 1. Baseline characteristics of infants with congenital heart disease (CHD) who**
705 **underwent surgery with cardiopulmonary bypass (CPB), according to analysis group.** MRI
706 indicates magnetic resonance imaging; SWI, susceptibility weighted imaging; ND,
707 neurodevelopmental outcomes; CHD, congenital heart disease; HLHS, hypoplastic left heart
708 syndrome; TGA, transposition of the great arteries; WMI, white matter injury; QPS, quartered
709 point system; TMS, total maturation score; CPB, cardiopulmonary bypass; DHCA, deep
710 hypothermic circulatory arrest; ACT, activated clotting time; preop, preoperative; post,
711 postoperative.

712

713

714

715

716

717

718

719

720

721

722

723

724

725

726

727

728

729

730

731

732

733

734

735

736

737

738

739

Risk factors	CMH + (%)	CMH -	Total	P-value
Demographics				
Gestational age				0.85
37-38 weeks	7 (23%)	23	30	
39-40 weeks	26 (26%)	75	101	
Birthweight				0.55
<2.5kg	0 (0%)	4	4	
Head circumference				0.63
<34cm	21 (27%)	58	79	
Sex				>0.99
Female	18 (43%)	59	77	
Male	24 (57%)	82	106	
Race				0.55
Caucasian	34 (25%)	104	138	
Black	3 (14%)	18	21	
Asian	0 (0%)	2	2	
Ethnicity				0.72
Hispanic/Latino	4 (31%)	9	13	
Pre-operative				
Cardiac diagnosis				0.82
HLHS	17 (25%)	51	68	
TGA	12 (20%)	47	59	
Other	13 (23%)	43	56	
Cardiac catheter intervention	12 (31%)	27	39	0.27
Type of birth				0.68
Vaginal	26 (25%)	80	106	
C-section	16 (21%)	61	77	
Gestational diabetes	3 (23%)	10	13	>0.99
Gestational hypertension	3 (25%)	9	12	>0.99
Gestational preeclampsia	0 (0%)	2	2	>0.99
Hemoglobin*				0.51
<14 g/dL	15 (22%)	52	67	
Platelets**				0.59
<150x10 ³ /uL	1 (14%)	6	7	
Arrhythmia	3 (25%)	9	12	>0.99
TMS				0.29
<12	41 (24%)	132	173	

740 *Hemoglobin values were collected from blood gas records within 72 hours of surgery

741 **Platelet values were collected from blood gas records within 72 hours of surgery

742

743 **Table 2. Association between candidate risk factors and cerebral microhemorrhage on**

744 **preoperative magnetic resonance imaging (MRI).** Fisher's exact test was performed for

745 categorical risk factors, whereas Wilcoxon rank sum test was performed for continuous risk

746 factors. Cardiac catheter interventions included balloon atrial septostomy (BAS) and atrial stents.

747 TMS, total maturation score.

748

749

750

751

752

753

754

755

756

757

758

759

760

761

762

763

764

765

766

767

768

769

770

771

772

773

774

775

776

777

778

779

Risk factors	Beta (Std. Error)	P-value
	Multivariate	
Demographics		
Birthweight	-1.04 (0.479)	0.03
Intra-operative		
Duration of bypass	0.03 (0.007)	<0.0001
Postoperative		
ECMO support	5.23 (1.44)	0.0004
Seizure	1.94 (0.817)	0.02

780 **Table 3 Association between candidate risk factors and new or worsened cerebral**
781 **microhemorrhage on postoperative magnetic resonance imaging (MRI).** Linear regression
782 was performed for both the univariate analysis and multivariate model. The multivariate model
783 included birth weight and the significantly associated variables from univariate analyses.
784
785
786
787
788
789
790
791
792
793
794
795
796
797
798
799
800
801
802
803
804
805
806
807
808
809
810
811

Risk Factor	NEURODEVELOPMENTAL OUTCOME					
	Cognition		Language		Motor	
	Univariate (p-value)	MultiV (p-value)	Univariate (p-value)	MultiV (p-value)	Univariate (p-value)	MultiV (p-value)
Postop CMH	0.02	0.12	0.06		0.001	0.01
Sex	0.07		0.01		0.01	0.03
GA	0.46		0.45		0.81	
CPB duration	0.49		0.20		0.59	
Postop ECMO	0.002	0.007	0.007	0.02	0.07	
Seizure	0.42		0.28		0.03	0.1
WMI volume	0.68		0.83		0.91	
QPS score	0.35		0.86		0.50	
TMS	0.99		0.42		0.59	

831 **Table 4. Association between candidate risk factors in patients who received postoperative**
832 **magnetic resonance imaging (MRI) and composite cognition, language, and motor**
833 **neurodevelopmental (ND) outcomes scores on Bayley-III Scales of Infant and Toddler**
834 **Development at 18 months.** Linear regression was performed for both univariate and then
835 multivariate analyses. MultiV; multivariate. Postop; postoperative. GA; gestational age. CPB,
836 cardiopulmonary bypass; ECMO, extracorporeal membrane oxygenation. WMI; white matter
837 injury. QPS; quartered point score. TMS; total maturation score.

838
839
840
841
842
843
844
845
846
847