

Supplementary Materials

Supplementary Figures

Supplementary Figure 1 The prediction of the total number of IBD incidence in age groups in 2019 and 2040, both sexes.

Supplementary Figure 2 The crude rate and age-standardized rate of different measures of IBD in 5 regions of Asia from 1990 to 2019.

Supplementary Tables

Supplementary Table 1 The total number of incidence, prevalence, deaths, YLLs, YLDs, and DALYs of all ages in Asia in 1990 and 2019.

Supplementary Table 2 The age-standardized incidence, prevalence, deaths, YLLs, YLDs, and DALYs rate (per 100,000 population) in Asia in 1990 and 2019.

Supplementary Table 3 The total number and age-standardized rate of incidence, prevalence, and deaths in regions of Asia in 2019.

Supplementary Table 4 The total number and age-standardized rate of YLLs, YLDs, and DALYs in regions of Asia in 2019.

Supplementary Table 5 The decomposition analysis of IBD-related incidence and DALYs in different regions of Asia from 1990 to 2019.

Supplementary Table 6 An assessment of predicted incidence trends to 2040 in Asia.

Supplementary Table 7 Prediction of age-standardised incidence rate in each age group of IBD from 2020 to 2040.

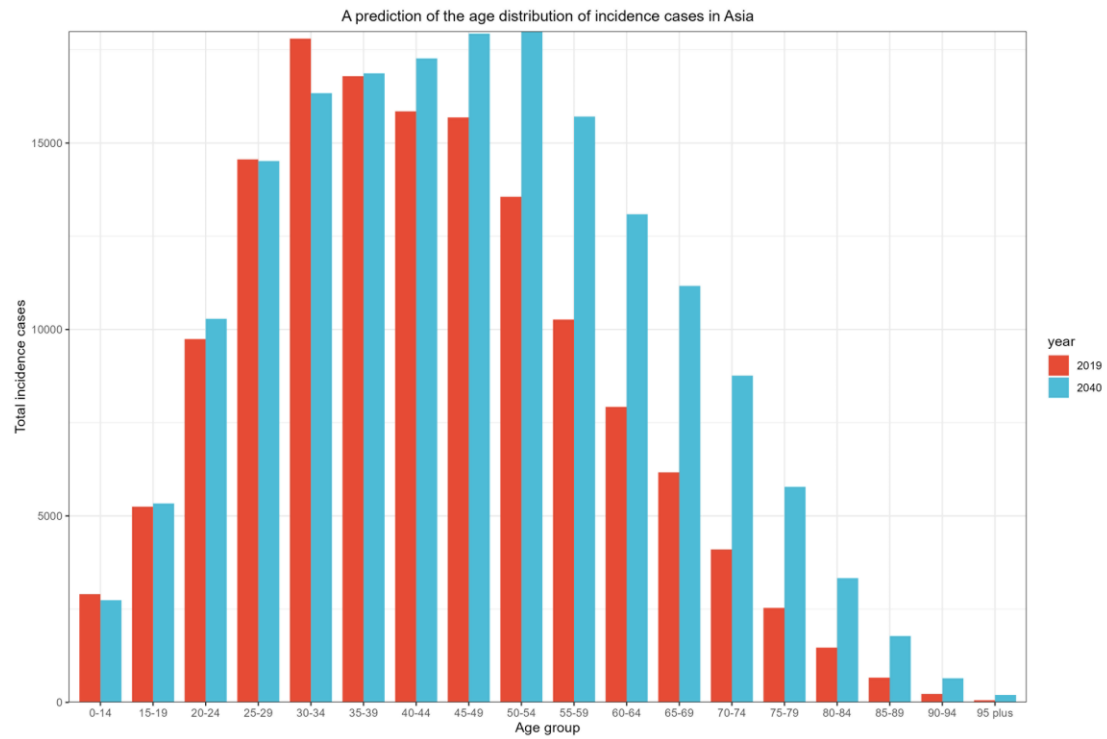
Supplementary Methods

1. Decomposition Analysis

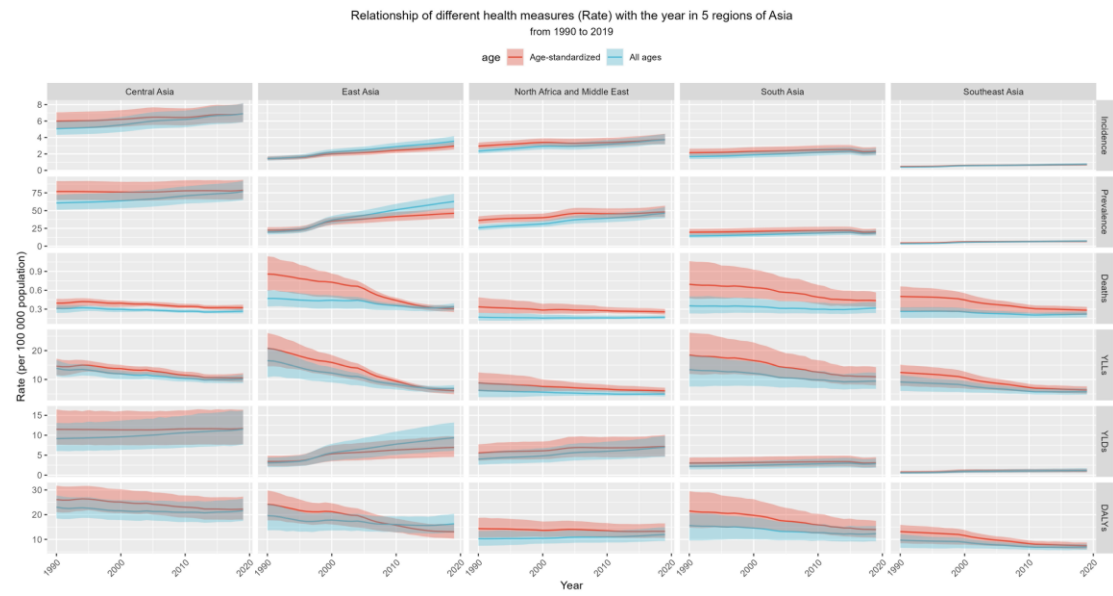
2. Frontier Analysis

Supplementary Figures

Supplementary Figure 1 The prediction of the total number of IBD incidence in age groups in 2019 and 2040, both sexes. IBD, inflammatory bowel disease



Supplementary Figure 2 The crude rate and age-standardized rate of different measures of IBD in 5 regions of Asia from 1990 to 2019. IBD, inflammatory bowel disease; YLLs, years of life lost; YLDs, years lived with disability; DALYs, disability-adjusted life-years.



Supplementary Table 1. The total number of incidence, prevalence, deaths, YLLs, YLDs, and DALYs of all ages in Asia in 1990 and 2019

Measure	Female (95% UI)		Male (95% UI)		Both (95% UI)	
	1990	2019	1990	2019	1990	2019
Incidence	26827 (22586-31724)	62840 (54255-73496)	37940 (31595-45212)	82721 (70654-97174)	64768 (54186-76819)	145561 (124960-170895)
Prevalence	348952 (289914-412408)	923687 (793214-1072032)	414592 (344796-497045)	1068534 (913134-1246870)	763544 (634874-905119)	1992221 (1707092-2322098)
Deaths	6107 (3701-7747)	6766 (5462-7862)	5922 (3874-8433)	7191 (5898-8796)	12030 (8669-15526)	13957 (11898-16021)
YLLs	217123 (107235-279989)	161618 (123907-191895)	207843 (125799-275058)	188479 (153519-235729)	424966 (278705-534164)	350097 (292031-409529)
YLDs	54479 (35861-76966)	141776 (94042-196499)	61503 (40173-86698)	157887 (104323-222128)	115982 (75838-162919)	299663 (198365-418635)
DALYs	271603 (159080-343402)	303394 (239582-36940)	269346 (183761-340858)	346366 (277839-423501)	540949 (382320-666324)	649760 (530395-783181)

UI, uncertainty interval; YLLs, years of life lost; YLDs, years lived with disability; DALYs, disability-adjusted life-years

Supplementary Table 2. The age-standardized incidence, prevalence, deaths, YLLs, YLDs, and DALYs rate (per 100,000 population) in Asia in 1990 and 2019

Measure	Female (95% UI)		Male (95% UI)		Both (95% UI)	
	1990	2019	1990	2019	1990	2019
Incidence	1.97 (1.68-2.34)	2.56 (2.21-2.98)	2.66 (2.26-3.17)	3.31 (2.85-3.88)	2.32 (1.97-2.76)	2.94 (2.53-3.44)
Prevalence	27.54 (23.05-32.81)	36.64 (31.42-42.45)	32.10 (26.81-38.41)	42.18 (36.08-49.20)	29.81 (24.93-35.53)	39.37 (33.70-45.81)
Deaths	0.65 (0.40-0.89)	0.29 (0.24-0.34)	0.69 (0.44-1.03)	0.36 (0.30-0.44)	0.67 (0.46-0.90)	0.33 (0.28-0.37)
YLLs	16.45 (9.21-20.45)	6.90 (5.27-8.17)	16.77 (10.70-23.38)	8.34 (6.82-10.34)	16.60 (11.79-20.90)	7.59 (6.32-8.88)
YLDs	4.24 (2.78-5.94)	5.64 (3.74-7.82)	4.72 (3.12-6.65)	6.23 (4.11-8.76)	4.48 (2.97-6.29)	5.93 (3.92-8.28)
DALYs	20.69 (13.26-25.37)	12.54 (9.90-15.28)	21.49 (15.10-28.05)	14.57 (11.80-17.67)	21.08 (15.82-25.98)	13.51 (11.08-16.21)

UI, uncertainty interval; YLLs, years of life lost; YLDs, years lived with disability; DALYs, disability-adjusted life-years

Supplementary Table 3. The total number and age-standardized rate of incidence, prevalence, and deaths in regions of Asia in 2019

Location	Incidence		Prevalence		Deaths	
	Incidence cases	ASIR (per 100,000)	Prevalence cases	ASPR (per 100,000)	Deaths caess	ASDR (per 100,000)
	No. (95% UI)	No. (95% UI)	No. (95% UI)	No. (95% UI)	No. (95% UI)	No. (95% UI)
Central Asia						
Armenia	237 (200-283)	6.64 (5.62-7.95)	3263 (2744-3956)	86.67 (72.86-104.56)	11 (8-13)	0.28 (0.21-0.34)
Azerbaijan	805 (677-965)	7.01 (5.92-8.40)	9463 (7886-11458)	81.93 (68.62-99.02)	13 (10-18)	0.16 (0.11-0.23)
Georgia	275 (234-327)	6.32 (5.38-7.44)	4210 (3545-5060)	87.97 (73.75-104.83)	17 (10-22)	0.29 (0.19-0.37)
Kazakhstan	1389 (1185-1660)	7.20 (6.14-8.56)	15823 (13219-18930)	81.77 (68.13-97.46)	82 (66-100)	0.46 (0.37-0.56)
Kyrgyzstan	390 (329-460)	6.39 (5.41-7.54)	4283 (3592-5083)	73.31 (61.61-87.09)	10 (8-12)	0.19 (0.16-0.25)
Mongolia	251 (210-300)	7.35 (6.20-8.69)	2328 (1907-2810)	69.72 (57.44-83.84)	12 (9-16)	0.45 (0.33-0.61)
Tajikistan	518 (439-612)	6.23 (5.32-7.30)	5519 (4623-6632)	71.19 (59.54-85.49)	18 (13-26)	0.30 (0.22-0.41)
Turkmenistan	383 (324-451)	7.68 (6.53-9.05)	3806 (3155-4551)	77.89 (64.42-92.76)	14 (9-20)	0.33 (0.22-0.46)
Uzbekistan	520 (410-651)	6.90 (5.90-8.20)	5742 (4546-7126)	75.79 (63.42-90.50)	13 (7-22)	0.29 (0.23-0.39)
East Asia						
China	51462 (43933-60474)	3.01 (2.59-3.50)	911045 (776347-1069533)	47.06 (40.05-54.99)	4676 (3774-5461)	0.30 (0.24-0.35)
Japan	22436 (19353-25906)	19.65 (16.87-22.71)	408632 (353858-468152)	291.9 (251.75-336.57)	452 (350-629)	0.11 (0.09-0.16)
North Korea (DPRK)	387 (326-463)	1.29 (1.08-1.53)	4965 (4120-5978)	15.61 (12.96-18.71)	108 (75-147)	0.41 (0.28-0.59)
Republic of Korea	4407 (4220-4589)	7.33 (7.03-7.63)	46956 (44197-49997)	70.21 (66.03-74.79)	234 (183-313)	0.30 (0.23-0.39)
Taiwan (China)	470 (420-526)	1.72 (1.54-1.93)	9064 (8139-10153)	27.80 (24.80-31.28)	199 (152-264)	0.50 (0.38-0.65)
Middle East						
Afghanistan	684 (557-828)	2.45 (2.03-2.96)	5699 (4548-7113)	23.69 (19.05-29.24)	58 (31-89)	0.43 (0.26-0.64)
Bahrain	58 (48-72)	3.21 (2.68-3.88)	846 (688-1035)	44.05 (36.40-53.11)	1.2 (0.8-1.6)	0.17 (0.13-0.22)
Iran (Islamic Republic of)	3167 (2599-3894)	3.43 (2.86-4.23)	40493 (32952-49751)	44.80 (36.70-55.07)	132 (55-164)	0.19 (0.08-0.24)

Iraq	984 (810-1191)	2.54 (2.12-3.08)	10029 (8221-12199)	28.11 (23.22-34.20)	51 (38-67)	0.19 (0.15-0.27)
Jordan	779 (649-917)	6.91 (5.78-8.15)	11508 (9646-13565)	113.51 (95.78-133.87)	13 (10-17)	0.23 (0.18-0.30)
Kuwait	195 (161-239)	3.72 (3.09-4.54)	2857 (2338-3483)	54.34 (45.07-65.64)	4 (3-5)	0.15 (0.12-0.20)
Lebanon	194 (161-238)	3.56 (2.97-4.37)	2494 (2037-3050)	46.20 (37.84-56.68)	8 (4-12)	0.15 (0.08-0.23)
Oman	143 (115-173)	2.73 (2.27-3.27)	1575 (1266-1924)	33.81 (27.79-40.8)	4 (3-5)	0.23 (0.15-0.34)
Palestine	122 (101-145)	2.94 (2.47-3.50)	1351 (1104-1621)	35.42 (29.15-42.61)	4 (3-6)	0.20 (0.15-0.29)
Qatar	125 (102-152)	3.55 (3.00-4.28)	1446 (1178-1746)	44.46 (36.75-53.66)	2 (1-3)	0.34 (0.21-0.51)
Saudi Arabia	1122 (929-1353)	2.66 (2.24-3.18)	13816 (11338-16751)	34.43 (28.66-41.36)	27 (18-38)	0.15 (0.11-0.21)
Syrian Arab Republic	449 (376-544)	3.16 (2.63-3.83)	4862 (3940-5871)	33.67 (27.34-40.47)	37 (20-52)	0.36 (0.19-0.52)
Turkey	5961 (5119-6893)	6.44 (5.55-7.42)	93902 (80596-107925)	98.87 (84.96-113.45)	329 (250-471)	0.40 (0.30-0.56)
United Arab Emirates	520 (410-651)	4.12 (3.40-5.01)	5742 (4546-7126)	42.72 (35.58-51.97)	13 (7-22)	0.24 (0.15-0.43)
Yemen	647 (527-793)	2.54 (2.10-3.09)	6284 (5044-7734)	28.03 (22.65-34.94)	44 (30-68)	0.33 (0.22-0.52)
South Asia						
Cambodia	79 (64-96)	0.49 (0.40-0.59)	595 (467-730)	3.77 (3.01-4.61)	38 (26-48)	0.35 (0.23-0.45)
Bangladesh	3404 (2788-4136)	2.17 (1.78-2.65)	33018 (26285-41258)	21.62 (17.31-27)	713 (431-1068)	0.56 (0.35-0.83)
Bhutan	14 (12-17)	1.86 (1.55-2.29)	158 (128-197)	22.23 (18.11-27.62)	3 (2-7)	0.55 (0.34-1.23)
India	31775 (26433-38972)	2.34 (1.95-2.86)	270719 (219873-332264)	20.34 (16.57-24.97)	4214 (2950-5531)	0.40 (0.29-0.53)
Nepal	624 (515-764)	2.24 (1.85-2.76)	5036 (4049-6194)	18.72 (15.04-23.18)	115 (71-190)	0.59 (0.36-0.98)
Pakistan	3888 (3193-4838)	2.30 (1.91-2.86)	26815 (21768-33849)	16.77 (13.78-21.25)	657 (447-993)	0.62 (0.41-0.99)
Southeast Asia						
Brunei Darussalam	26 (21-31)	5.09 (4.17-6.09)	295 (237-361)	57.28 (46.33-70.04)	2.6 (2.1-3.2)	1.48 (0.97-1.89)
Indonesia	1504 (1248-1808)	0.55 (0.46-0.66)	11410 (9158-13704)	4.16 (3.37-5.00)	913 (582-1179)	0.55 (0.33-0.70)
Lao PDR	35 (29-43)	0.51 (0.42-0.63)	241 (191-300)	3.67 (2.95-4.55)	11 (6-17)	0.26 (0.14-0.41)
Malaysia	251 (223-283)	0.76 (0.67-0.85)	2165 (1879-2498)	6.56 (5.71-7.56)	41 (30-56)	0.17 (0.12-0.23)
Maldives	2.8 (2.3-3.5)	0.51 (0.43-0.61)	27 (21-33)	4.94 (3.96-5.96)	0.9 (0.7-1.1)	0.30 (0.23-0.40)
Myanmar	306 (253-378)	0.55 (0.46-0.68)	2062 (1656-2558)	3.71 (3.00-4.59)	59 (44-82)	0.13 (0.10-0.17)

Philippines	657 (541-799)	0.63 (0.52-0.76)	5073 (4044-6166)	4.96 (4.02-6.00)	117 (95-155)	0.16 (0.13-0.20)
Singapore	215 (178-264)	3.21 (2.68-3.90)	3179 (2593-3962)	41.88 (34.28-51.91)	5 (4-8)	0.07 (0.06-0.11)
Sri Lanka	268 (239-301)	1.15 (1.02-1.30)	2295 (2003-2637)	9.51 (8.29-10.90)	21 (15-30)	0.10 (0.07-0.13)
Thailand	373 (309-455)	0.46 (0.38-0.56)	3808 (3078-4630)	4.28 (3.44-5.22)	111 (80-149)	0.12 (0.08-0.15)
Timor-Leste	6 (5-7)	0.51 (0.42-0.62)	41 (33-50)	3.90 (3.14-4.72)	3 (2-5)	0.36 (0.20-0.61)
Viet Nam	1482 (1201-1836)	1.37 (1.11-1.70)	20278 (16050-25063)	18.35 (14.68-22.55)	177 (119-247)	0.22 (0.15-0.32)

UI, uncertainty interval; ASIR, age-standardized incidence rate; ASPR, age-standardized prevalence rate; ASDR, age-standardized deaths rate

Supplementary Table 4. The total number and age-standardized rate of YLLs, YLDs, and DALYs in regions of Asia in 2019

Location	YLLs		YLDs		DALYs	
	Total YLLs No. (95% UI)	ASR (per 100,000) No. (95% UI)	Total YLDs No. (95% UI)	ASR (per 100,000) No. (95% UI)	Total DALYs No. (95% UI)	ASR (per 100,000) No. (95% UI)
Central Asia						
Armenia	285 (218-347)	7.67 (6.05-9.41)	479 (314-696)	12.83 (8.32-18.60)	764 (593-979)	20.50 (15.81-26.35)
Azerbaijan	418 (307-581)	4.03 (3.03-5.50)	1411 (918-2033)	12.17 (7.97-17.50)	1829 (1289-2470)	16.20 (11.65-21.65)
Georgia	378 (262-483)	7.25 (5.31-9.12)	612 (399-882)	13.00 (8.37-18.79)	991 (741-1269)	20.25 (15.35-26.28)
Kazakhstan	2819 (2304-3518)	14.83 (12.13-18.29)	2353 (1532-3415)	12.13 (7.91-17.57)	5172 (4164-6466)	26.97 (21.78-33.61)
Kyrgyzstan	386 (320-464)	6.43 (5.38-7.82)	645 (418-931)	10.95 (7.11-15.71)	1031 (789-1325)	17.37 (13.34-22.37)
Mongolia	462 (325-640)	14.29 (10.17-19.70)	352 (229-497)	10.45 (6.81-14.72)	814 (620-1028)	24.75 (19.13-31.11)
Tajikistan	808 (547-1202)	9.95 (7.01-14.29)	838 (531-1193)	10.65 (6.88-15.06)	1646 (1219-2185)	20.60 (15.55-26.90)
Turkmenistan	547 (344-794)	11.25 (7.2-16.15)	573 (380-822)	11.65 (7.75-16.70)	1120 (805-1438)	22.90 (16.63-29.27)
Uzbekistan	3355 (2682-4163)	10.62 (8.67-13.09)	3514 (2259-4944)	11.28 (7.35-15.76)	6869 (5391-8500)	21.90 (17.37-27.16)
East Asia						
China	96558 (75917-112804)	6.02 (4.78-6.95)	135906 (89067-191529)	7.07 (4.65-9.86)	232464 (179903-291090)	13.10 (10.29-16.31)
Japan	6680 (5569-9187)	2.48 (2.16-3.50)	60744 (40135-83792)	44.1 (29.09-61.15)	67424 (46877-91495)	46.58 (31.41-63.54)
North Korea (DPRK)	2364 (1601-3219)	8.58 (5.85-11.80)	797 (514-1141)	2.52 (1.62-3.60)	3161 (2323-4117)	11.10 (8.17-14.58)
Republic of Korea	2364 (1601-3219)	4.32 (3.46-6.56)	797 (514-1141)	10.68 (7.15-14.76)	10451 (7829-13343)	15.00 (11.13-19.33)
Taiwan (China)	2930 (2248-3889)	8.04 (6.21-10.65)	1408 (916-1972)	4.36 (2.85-6.13)	4338 (3499-5416)	12.40 (10.06-15.44)
Middle East						
Afghanistan	2125 (1018-3729)	10.94 (5.95-16.65)	892 (565-1318)	3.65 (2.30-5.35)	3017 (1879-4660)	14.58 (9.58-20.47)
Bahrain	40 (27-55)	3.52 (2.55-4.70)	127 (80-184)	6.54 (4.15-9.44)	167 (116-229)	10.05 (7.40-13.28)
Iran (Islamic Republic of)	3564 (1516-4438)	4.53 (1.93-5.65)	1565 (992-2275)	6.49 (4.20-9.30)	9481 (6679-12439)	11.03 (7.60-14.22)

Iraq	2153 (1482-2983)	6.09 (4.44-8.04)	1565 (992-2275)	4.33 (2.73-6.26)	3719 (2808-4931)	10.42 (8.08-13.32)
Jordan	427 (324-558)	5.19 (4.00-6.65)	1728 (1113-2514)	16.81 (11.07-24.25)	2155 (1536-2953)	22.01 (16.06-29.65)
Kuwait	124 (99-157)	3.62 (2.87-4.65)	435 (274-630)	8.11 (5.19-11.74)	558 (391-755)	11.73 (8.74-15.53)
Lebanon	177 (94-272)	3.37 (1.80-5.16)	368 (240-523)	6.81 (4.45-9.72)	545 (394-737)	10.18 (7.34-13.75)
Oman	133 (95-186)	4.86 (3.53-6.65)	242 (151-351)	5.10 (3.25-7.36)	375 (271-496)	9.96 (7.66-12.72)
Palestine	113 (82-189)	4.11 (3.06-6.47)	208 (128-305)	5.36 (3.42-7.79)	320 (235-443)	9.47 (7.18-12.75)
Qatar	78 (47-114)	6.52 (3.91-9.54)	219 (138-327)	6.55 (4.21-9.58)	296 (205-412)	13.06 (9.28-17.59)
Saudi Arabia	1039 (625-1534)	3.65 (2.47-4.98)	2142 (1319-3179)	5.25 (3.33-7.66)	3181 (2284-4376)	8.90 (6.65-11.75)
Syrian Arab Republic	914 (560-1293)	7.62 (4.49-10.65)	739 (466-1104)	5.13 (3.26-7.68)	1653 (1195-2195)	12.75 (9.00-16.93)
Turkey	8492 (6513-11659)	10.33 (7.95-13.81)	13996 (9188-19772)	14.73 (9.72-20.87)	22488 (17253-28896)	25.05 (19.42-32.24)
United Arab Emirates	534 (303-913)	6.04 (3.76-10.69)	867 (532-1289)	6.36 (4.02-9.32)	1401 (971-1965)	12.40 (8.88-17.45)
Yemen	1438 (938-2152)	8.08 (5.39-12.24)	985 (625-1443)	4.32 (2.75-6.33)	2423 (1790-3248)	12.40 (9.18-16.77)
South Asia						
Cambodia	1123 (798-1438)	8.36 (5.84-10.65)	99 (61-149)	0.62 (0.39-0.93)	1222 (890-1546)	8.98 (6.42-11.33)
Bangladesh	21249 (12680-31860)	14.77 (8.90-22.04)	5105 (3208-7461)	3.33 (2.08-4.88)	26354 (17363-37248)	18.10 (12.11-25.27)
Bhutan	77 (44-176)	12.42 (7.37-28.66)	24 (15-36)	3.40 (2.13-4.93)	102 (67-202)	15.82 (10.39-31.52)
India	122827 (81271-163422)	9.93 (6.68-13.18)	41590 (27306-60763)	3.11 (2.03-4.56)	164416 (117527-208276)	13.04 (9.44-16.5)
Nepal	3029 (1902-4983)	12.73 (7.88-21.03)	790 (502-1165)	2.92 (1.85-4.32)	3819 (2683-5781)	15.65 (10.93-23.88)
Pakistan	23051 (14815-34284)	15.17 (10.24-22.68)	4235 (2713-6139)	2.62 (1.70-3.81)	27286 (18727-38379)	17.80 (12.91-25.37)
Southeast Asia						
Brunei Darussalam	69 (53-98)	24.07 (19.52-29.89)	45 (28-67)	8.69 (5.47-12.89)	114 (89-147)	32.76 (26.62-39.71)
Indonesia	23069 (16619-30317)	10.98 (7.55-14.24)	1874 (1170-2767)	0.68 (0.43-1.00)	24943 (18268-32252)	11.66 (8.16-14.98)
Lao PDR	347 (198-574)	6.36 (3.59-10.57)	40 (25-60)	0.61 (0.38-0.91)	387 (234-610)	6.97 (4.13-11.24)
Malaysia	1079 (782-1429)	3.85 (2.79-5.08)	356 (227-507)	1.08 (0.70-1.53)	1434 (1090-1814)	4.92 (3.71-6.26)
Maldives	25 (19-33)	6.39 (4.97-8.46)	4 (3-7)	0.80 (0.51-1.18)	29 (23-38)	7.20 (5.69-9.23)
Myanmar	1916 (1356-2910)	3.73 (2.71-5.48)	341 (212-517)	0.61 (0.38-0.92)	2258 (1680-3215)	4.34 (3.28-6.04)

Philippines	3721 (3019-5076)	4.06 (3.29-5.49)	835 (516-1254)	0.81 (0.51-1.21)	4556 (3797-5981)	4.87 (4.06-6.26)
Singapore	126 (101-184)	1.71 (1.38-2.50)	487 (305-710)	6.45 (4.07-9.52)	612 (427-838)	8.16 (5.69-11.25)
Sri Lanka	522 (366-736)	2.22 (1.57-3.10)	373 (240-519)	1.55 (1.00-2.16)	895 (684-1147)	3.77 (2.86-4.79)
Thailand	2645 (1908-3567)	2.93 (2.13-3.94)	626 (393-936)	0.71 (0.44-1.05)	3272 (2453-4259)	3.64 (2.76-4.68)
Timor-Leste	80 (42-132)	8.50 (4.60-14.26)	7 (4-10)	0.64 (0.41-0.94)	86 (48-138)	9.14 (5.17-14.89)
Viet Nam	4134 (2835-5638)	4.62 (3.17-6.34)	3285 (2015-5039)	2.98 (1.84-4.56)	7419 (5510-9604)	7.60 (5.65-9.80)

UI, uncertainty interval; ASR, age-standardized rate (per 100 000 population); YLLs, years of life lost; YLDs, years lived with disability; DALYs, disability-adjusted life-years

Supplementary Table 5. The decomposition analysis of IBD-related incidence and DALYs in different regions of Asia from 1990 to 2019

Location	Incidence							DALYs						
	overall	a_effect	p_effect	e_effect	a_percent	p_percent	e_percent	overall	a_effect	p_effect	e_effect	a_percent	p_percent	e_percent
Asia	80793	20648	35496	24648	25.56	43.94	30.51	108812	151295	214462	-256946	139.04	197.09	-236.14
Central Asia	2947	830	1447	670	28.16	49.10	22.74	4285	2289	5400	-3404	53.42	126.02	-79.44
East Asia	34751	6214	6049	22489	17.88	17.41	64.71	-268	78512	44688	-123469	-29293.5	-16673.6	46067.05
Middle East*	14616	1204	9222	4189	8.24	63.10	28.66	37317	11043	29409	-3135	29.59	78.81	-8.40
South Asia	21265	3385	14565	3315	15.92	68.49	15.59	50530	31086	100169	-80725	61.52	198.24	-159.76
Southeast Asia	3098	584	1168	1347	18.83	37.70	43.47	1370	11914	17501	-28046	869.87	1277.85	-2047.72

IBD, inflammatory bowel disease; DALYs, disability-adjusted life-years; a_effect, aging effect; p_effect, population effect; e_effect, epidemiological changes effect; a_percent, aging percent; p_percent, population percent; e_percent, epidemiological changes percent. *Middle East, North Africa and Middle East, including data for the North African region

Supplementary Table 6. An assessment of predicted incidence trends to 2040 in Asia

Year	Total incidence cases			ASR (per 100,000)		
	Female	Male	Both	Female	Male	Both
2019	62840	82721	145561	2.56	3.32	2.94
2020	64661	85499	150160	2.55	3.32	2.94
2021	65676	86744	152421	2.56	3.32	2.94
2022	66677	87975	154652	2.56	3.33	2.95
2023	67591	89041	156632	2.56	3.33	2.95
2024	68492	90088	158580	2.57	3.33	2.95
2025	69375	91115	160490	2.57	3.33	2.95
2026	70242	92123	162364	2.57	3.33	2.96
2027	71094	93115	164210	2.57	3.34	2.96
2028	71862	93953	165816	2.57	3.33	2.96
2029	72613	94771	167384	2.57	3.33	2.96
2030	73345	95566	168911	2.57	3.33	2.95
2031	74058	96336	170394	2.57	3.32	2.95
2032	74756	97088	171844	2.57	3.32	2.95
2033	75360	97675	173034	2.57	3.31	2.95
2034	75941	98232	174173	2.57	3.31	2.94
2035	76499	98759	175258	2.57	3.30	2.94
2036	77032	99254	176286	2.56	3.29	2.93
2037	77545	99722	177267	2.56	3.28	2.93
2038	78007	100153	178160	2.56	3.28	2.92
2039	78442	100549	178990	2.56	3.27	2.92
2040	78849	100907	179756	2.56	3.27	2.92
2041	79228	101227	180455	2.55	3.26	2.91
2042	79584	101513	181096	2.55	3.25	2.91
2043	79904	101747	181651	2.55	3.25	2.90
2044	80195	101942	182138	2.55	3.24	2.90

ASR, age-standardized rate (per 100,000 population)

**Supplementary Table 7. Prediction of age-standardised incidence rate in each age group
of IBD from 2020 to 2040**

Age group	2020		2030		2040		2044	
	Female	Male	Female	Male	Female	Male	Female	Male
1 to 4	0.25	0.30	0.25	0.32	0.26	0.33	0.26	0.34
5 to 9	1.25	1.70	1.27	1.75	1.28	1.78	1.28	1.79
10 to 14	2.27	3.25	2.25	3.23	2.26	3.28	2.27	3.30
15 to 19	3.29	4.63	3.18	4.49	3.18	4.50	3.18	4.52
20 to 24	4.02	5.36	3.90	5.19	3.81	5.03	3.81	5.06
25 to 29	4.42	5.65	4.33	5.43	4.15	5.16	4.10	5.06
30 to 34	4.61	5.78	4.54	5.54	4.37	5.25	4.28	5.12
35 to 39	4.60	5.74	4.64	5.65	4.50	5.32	4.44	5.22
40 to 44	4.34	5.41	4.57	5.66	4.46	5.29	4.41	5.14
45 to 49	4.02	5.04	4.35	5.44	4.34	5.25	4.29	5.09
50 to 54	3.76	4.72	3.99	5.03	4.18	5.16	4.16	5.05
55 to 59	3.47	4.41	3.63	4.63	3.91	4.91	4.01	5.00
60 to 64	3.28	4.20	3.38	4.35	3.58	4.56	3.72	4.70
65 to 69	3.08	3.98	3.18	4.16	3.31	4.29	3.34	4.32
70 to 74	2.89	3.79	3.06	4.09	3.13	4.15	3.22	4.23
75 to 79	2.74	3.73	2.91	4.09	2.99	4.19	2.97	4.16
80 to 84	2.76	4.05	2.89	4.40	3.04	4.65	3.09	4.71
85 to 89	2.87	4.24	2.94	4.57	3.10	4.88	3.15	4.98
90 to 94	0.25	0.30	0.25	0.32	0.26	0.33	0.26	0.34
95 plus	1.25	1.70	1.27	1.75	1.28	1.78	1.28	1.79

Age standardized incidence rate (per 100 000 population)

Supplementary Methods

1. Decomposition Analysis

The incidence and DALYs of IBD were decomposed according to population age group, population growth, and epidemiological changes using the decomposition method of Das Gupta. In the case of DALYs, the number of DALYs in each location was calculated by the following formula:

$$DALY_{ay,py,ey} = \sum_{i=1}^{20} (a_{i,y} * p_y * e_{i,y})$$

$DALY_{ay,py,ey}$ represent DALYs based on factors such as age group, population, and DALYs rate for a particular year. $a_{i,y}$ represents the proportion of the population in the i age category out of 20 age categories in a given year y ; p_y represents the total population of y in a given year; $e_{i,y}$ indicates the DALYs rate annuity rate for the i age group in year y . The contribution of each factor to the change in DALYs from 1990 to 2019 was defined as the effect of one factor changing while the others remained constant. The calculation formula is as follows:

$$\begin{aligned} & [(DALY_{a2019,p1990,e1990} + DALY_{a2019,p2019,e2019})/3 \\ & + (DALY_{a2019,p1990,e2019} + DALY_{a2019,p2019,e1990})/6] \\ & - [(DALY_{a1990,p2019,e2019} + DALY_{a1990,p1990,e1990})/3 \\ & + (DALY_{a1990,p2019,e1990} + DALY_{a1990,p1990,e2019})/6] \end{aligned}$$

2. Frontier Analysis

To assess the relationship between the burden of IBD and socio-demographic development, we applied frontier analysis as a quantitative method to determine the lowest achievable age-standardized DALYs rate based on the developmental status of SDI measurements. The DALYs frontier pinpoints determine the minimum DALYs achievable for each country or region given its SDI. The distance from the frontier is denoted by the effective difference; large effective differences from the frontier indicate that there may be unrealized gains or opportunities for improvement (such as a reduction in DALYs for IBD) depending on where the country or region is on the development spectrum. A data envelope analysis was performed using the free disposal hull method, which utilizes data from 1990-2019 and generates frontier for age-adjusted IBD DALYs via the SDI index, allowing for the delineation of nonlinear frontiers. In order to account for uncertainty, the analysis used 500 bootstrapped samples of the data, randomly sampling with replacements from all countries and regions of Asia in all years. Mean IBD DALYs were calculated for the SDI values of each bootstrapped sample. Then the smooth frontier is obtained by regression of LOESS with a local polynomial degree of 1 and a span of 0.2. To exclude the effect of outliers, super-efficient countries or locations are excluded from the frontier generation. To understand the relationship between 2019 age-standardized IBD DALYs rate and the vis-à-vis frontier, we calculated the effective difference (absolute distance from the frontier) using the 2019 SDI and age-standardized IBD DALYs rate data points for each country or location. Countries or locations with lower DALYs than the frontiers were assigned a zero

distance.