

Genomic and immune determinants of resistance to anti-CD38 monoclonal antibody-based therapy in relapsed refractory multiple myeloma.

Bachisio Ziccheddu^{1*}, Claudia Giannotta^{2*}, Mattia D'Agostino^{3*}, Giuseppe Bertuglia³, Elona Saraci³, Stefania Oliva³, Elisa Genuardi³, Marios Papadimitriou¹, Benjamin Diamond¹, Paolo Corradini⁴, David Coffey¹, Ola Landgren¹, Niccolò Bolli^{5,6}, Benedetto Bruno³, Mario Boccadoro³, Massimo Massaia^{2,7#}, Francesco Maura^{1#}, Alessandra Larocca^{3#}

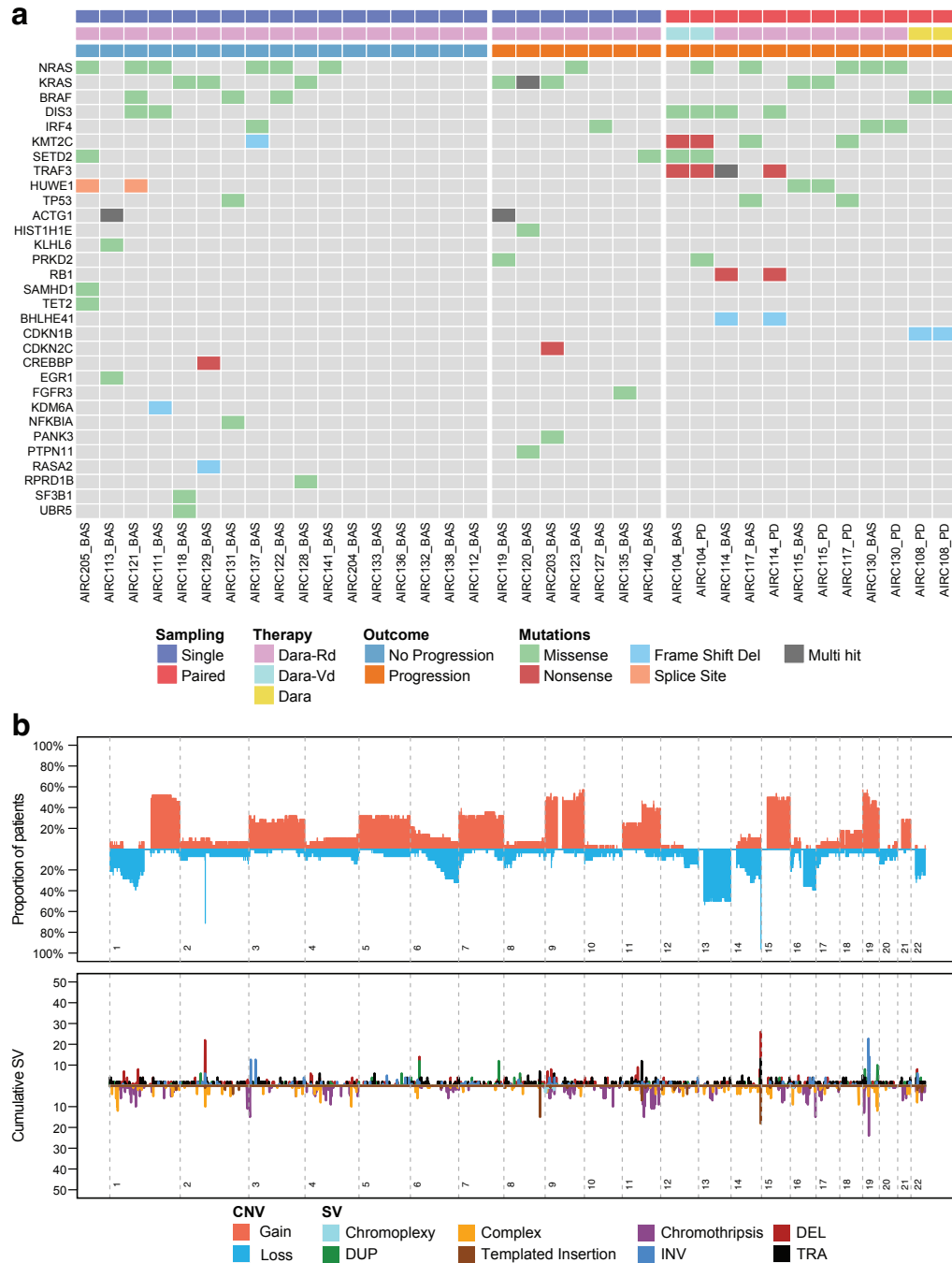
1. Myeloma Division, University of Miami, Sylvester Comprehensive Cancer Center, Miami, FL, USA.
2. Laboratory of Blood Tumor Immunology, Molecular Biotechnology Center "Guido Tarone", Department of Molecular Biotechnology and Health Sciences, Università di Torino, Torino, Italy.
3. Myeloma Unit, Division of Hematology, Università di Torino, Azienda Ospedaliero-Universitaria Città della Salute e della Scienza di Torino, Torino, Italy.
4. Division of Hematology and Bone Marrow Transplant, Fondazione IRCCS Istituto Nazionale dei Tumori, Milan, Italy.
5. Hematology Unit, Fondazione IRCCS Ca' Granda Ospedale Maggiore Policlinico, Milan, Italy.
6. Department of Oncology and Onco-Hematology, University of Milan, Milan, Italy
7. SC Ematologia, AO S. Croce e Carle, Cuneo, Italy.

*Contributed equally

#Joint senior authors

SUPPLEMENTAL FIGURE LEGEND

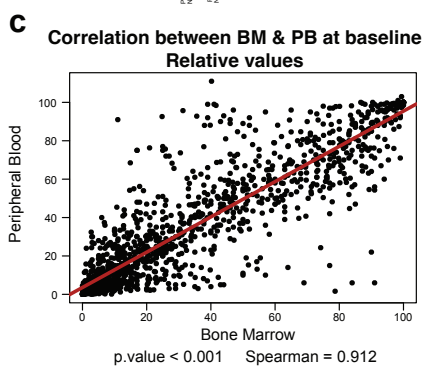
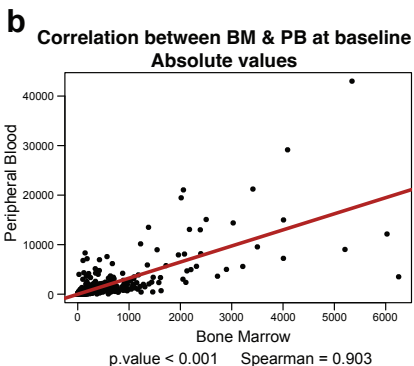
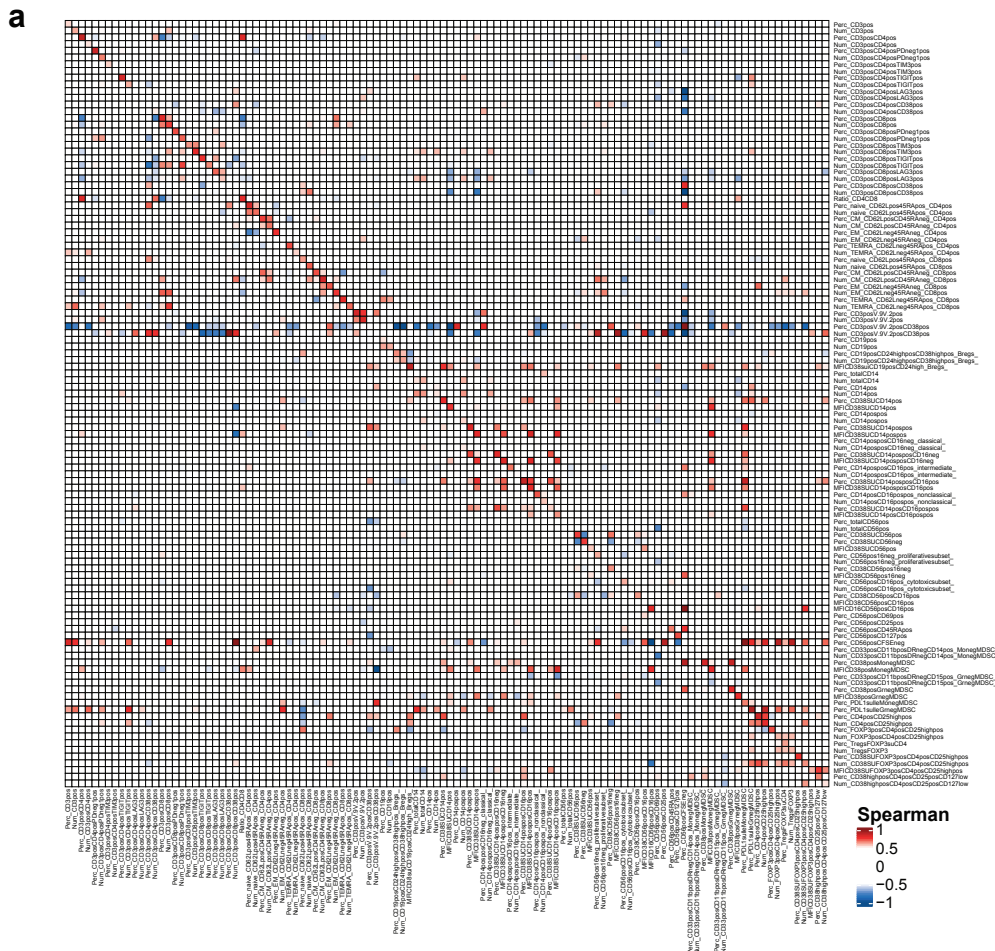
Supplemental Figure 1. Genomic landscape of 28 patients treated with Dara-Rd. a) Heatmap showing the 31 MM driver mutated genes among 28 patients treated with Dara-Rd. Two additional patients treated with other Dara-based regimens were included as well. b) The cumulative copy-number plot (top) and cumulative structural variant plot (bottom) across the entire series.



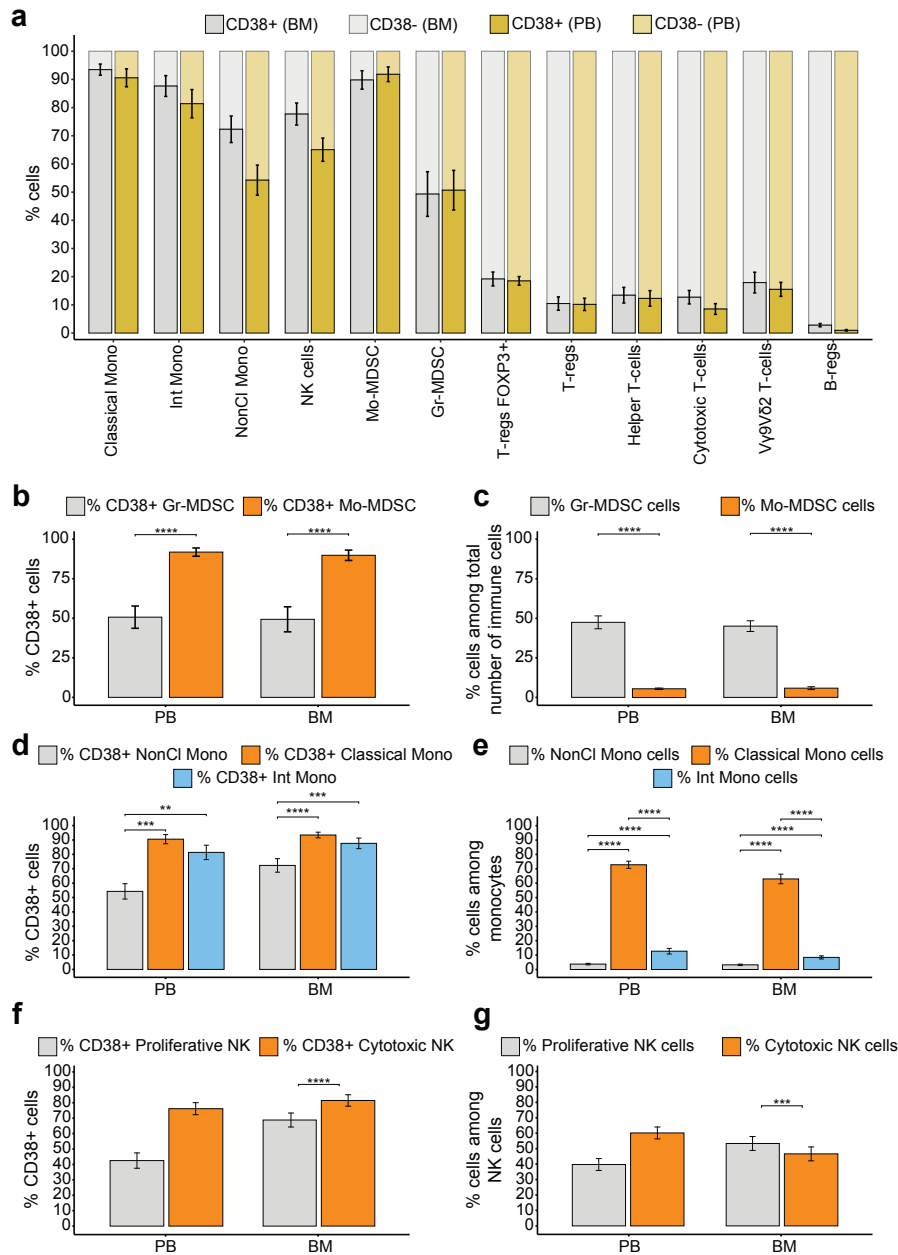
Supplemental Figure 2. Gene Set Enrichment Analysis (GSEA) for two aneuploidies associated with outcome, using the CoMMpass public dataset. Heatmap showing the 52-hallmark gene-sets tested in this analysis. The X and * indicate FDR<0.05 and FDR<0.1 respectively, while the bold pathways are significant in both aneuploidies and in the Kydar single cell RNA data set. NES: normalized enrichment score.



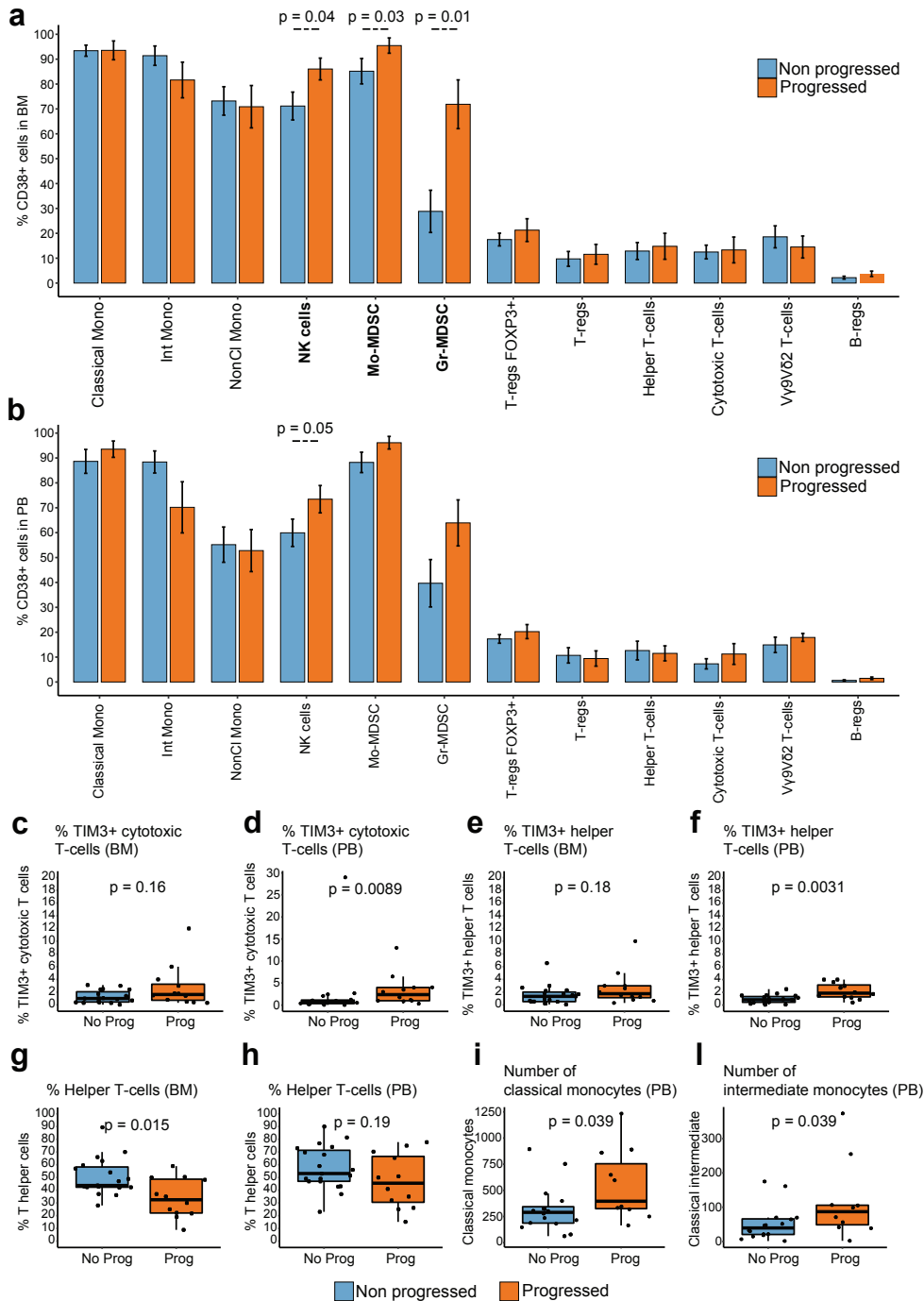
Supplemental Figure 3. Correlation analysis between BM and PB immune composition at baseline. a) Heatmap showing the Spearman coefficient per each contrast. The color scale is between 0.5 and 1 (red) and -0.5 and -1 (blue). b) Scatterplot with the linear regression line (red) between all the number of cells for each immune population in BM and PB at baseline. c) Scatterplot using relative values.



Supplemental Figure 4. Immune composition of RRMM at baseline. **a)** Barplot showing the percentage of CD38 pos for each immune cell population. **b)** Barplots showing the percentage of CD38 pos Gr-MDSC and Mo-MDSC cells in BM and PB samples. **c)** The percentage of Gr-MDSC and Mo-MDSC cells in BM and PB samples at baseline. **d)** Barplots presenting the percentages of CD38 pos monocyte subgroups. **e)** The percentage of Monocyte cells at baseline in both BM and PB samples. **f)** Barplot showcasing the percentage of CD38 pos NK cell at baseline in both BM and PB samples. **g)** The percentage of different NK subgroup cells at baseline in both BM and PB samples. The p-values were estimated using Wilcoxon test two sided; * ≤ 0.05 , ** ≤ 0.01 , *** ≤ 0.001 , **** ≤ 0.0001 . NonCI: non classical; Int: Intermediate.



Supplemental Figure 5. Association between immune composition at baseline with outcome. **a-b)** The percentage of CD38 pos immune cell in durable responders and progressors in BM (**a**) and in PB (**b**) samples. **c-l)** Boxplots showing the associations between immune cells at baseline in BM and PB samples and outcome. All p-values were estimated using Wilcoxon test two sided.



Supplemental Figure 6. Immunomodulation overtime. **a)** Bubble chart about the percentage of CD38 pos immune cell in BM samples before and after Dara-Rd in patients who achieved a durable response. **b)** Boxplots showing the percentage of CD38 pos intermediate monocyte overtime. **c-d)** Boxplots showing the absolute number of intermediate and non-classical monocytes overtime and based on response to Dara-Rd treatment (durable responders are in blue and progressors in orange). **e)** Boxplots showing the number of CD38 pos CD4+ CD25 CD127low T-reg cells overtime. **f-n)** Boxplots showing the immune cells associated with the significant genomic drivers. All p-values were estimated using Wilcoxon test two sided. The entire list of p-values is available in the **Supplemental Table 9-10**.

