

SUPPLEMENTARY MATERIALS FOR:
TRACKING THE IMPACT OF GOVERNMENT RESPONSE TO
COVID-19 EPIDEMIC: EVIDENCE FROM INDIA

Kaibalyapati Mishra¹

¹ CESP, ISEC, Bangalore, India

November 28, 2023

1 Detailed table of impact on Deaths at National Levels

	Pooled Model (1)	With Region FE (2)	With State FE (3)
Stringency	-0.250*** (0.00530)	-0.260*** (0.00552)	-0.231*** (0.00513)
Overall	-0.231*** (0.0128)	-0.224*** (0.0130)	-0.107*** (0.0137)
Containment	0.494*** (0.0136)	0.499*** (0.0140)	0.366*** (0.0140)
Temperature	0.0222*** (0.00240)	-0.00512 (0.00340)	0.325*** (0.0101)
Rainfall	-0.004*** (0.0002)	-0.001*** (0.0002)	0.006*** (0.0003)
Population Density	0.0001*** (0.000)	0.0001*** (0.000)	0.008*** (0.001)
Per-capita Income	0.0001*** (0.000)	0.0001*** (0.000)	0.0001*** (0.000)
Beds	7.00e-08 (0.000)	-0.005* (0.000)	0.0002*** (0.000)
Hospitals	-0.0001 (0.000)	0.0001** (0.000)	0.006*** (0.0003)
Migrants	-3.85e-10 (1.04e-09)	-1.25e-08*** (1.04e-09)	-0.0001*** (0.0000)
Constant	5.687*** (0.217)	6.924*** (0.240)	-13.58*** (0.962)
Weather Controls	Yes	Yes	Yes
Demographic and Economic Controls	Yes	Yes	Yes
Health Infrastructure Controls	Yes	Yes	Yes
N	32,071	31,182	32,071
R ²	0.651	0.659	0.728
Standard errors in parentheses — * p<0.05, ** p<0.01, *** p<0.001			

TABLE 1: Detailed table of PCSE estimates of the influence of non-pharmaceutical factors on COVID-19 deaths in India at the national level.

1.1 Complete table of impact on Deaths at Regional Levels

TABLE 2: Detailed table of PCSE estimates of the influence of non-pharmaceutical factors on COVID-19 deaths in India at the regional level

	Southern Region	Western Region	Eastern Region	Central Region	Northern Region	North-Eastern Region
	(1)	(2)	(3)	(4)	(5)	(6)
Stringency	-0.284*** (0.00678)	-0.250*** (0.00816)	-0.170*** (0.0108)	-0.172*** (0.00676)	-0.251*** (0.00638)	-0.127*** (0.00709)
Overall	-0.186*** (0.0156)	-0.180*** (0.0167)	-0.0969*** (0.0220)	-0.120*** (0.0154)	-0.177*** (0.0146)	-0.287*** (0.0132)
Containment	0.497*** (0.0169)	0.436*** (0.0180)	0.272*** (0.0270)	0.294*** (0.0167)	0.446*** (0.0170)	0.379*** (0.0139)
Temperature	0.0781*** (0.0109)	-1.059*** (0.0443)	0.474*** (0.0255)	1.661*** (0.0602)	-0.00397 (0.00563)	0.538*** (0.0168)
Rainfall	0.0218*** (0.00117)	0.00252* (0.00106)	0.0211*** (0.00148)	-0.00119 (0.000832)	0.0126*** (0.000746)	-0.0121*** (0.000528)
Population Density	0.000901*** (0.0000239)				0.0000967*** (0.00000753)	0.00132*** (0.000278)
Per-capita Income	-0.0000110*** (0.00000163)	0.0000381*** (0.00000633)	0.000152*** (0.0000128)	-0.000214*** (0.0000141)	0.00000572*** (0.00000164)	-0.0000508*** (0.00000215)
Beds	-0.0000266*** (0.00000160)	0.000185*** (0.0000423)	-0.000513*** (0.0000430)	-0.00135*** (0.0000731)	0.0000387*** (0.00000432)	-0.00139*** (0.0000533)
Hospitals	0.000141*** (0.00000841)		-0.00260*** (0.000269)	0.0332*** (0.00185)	0.000350*** (0.0000929)	0.0287*** (0.00110)
Migrants	-7.38e-08*** (3.39e-09)	-8.60e-08*** (2.00e-08)	0.00000353*** (0.000000275)	-0.00000516*** (0.000000294)	-0.000000114*** (2.21e-08)	0.000000139*** (4.84e-09)
Constant	3.459*** (0.523)	25.02*** (1.868)	-8.652*** (0.648)	5.060*** (1.343)	4.249*** (0.497)	2.431*** (0.351)
Weather Controls	Yes	Yes	Yes	Yes	Yes	Yes
Demographic and Economic Controls	Yes	Yes	Yes	Yes	Yes	Yes
Health Infrastructure Controls	Yes	Yes	Yes	Yes	Yes	Yes
N	6,873	2,939	4,012	3,935	7,007	6,416
R ²	0.695	0.766	0.773	0.778	0.697	0.677

Standard errors in parentheses — $p < 0.05^*$, $p < 0.01^{**}$, $p < 0.001^{***}$

2 Fitted predicted values of death on Stringency

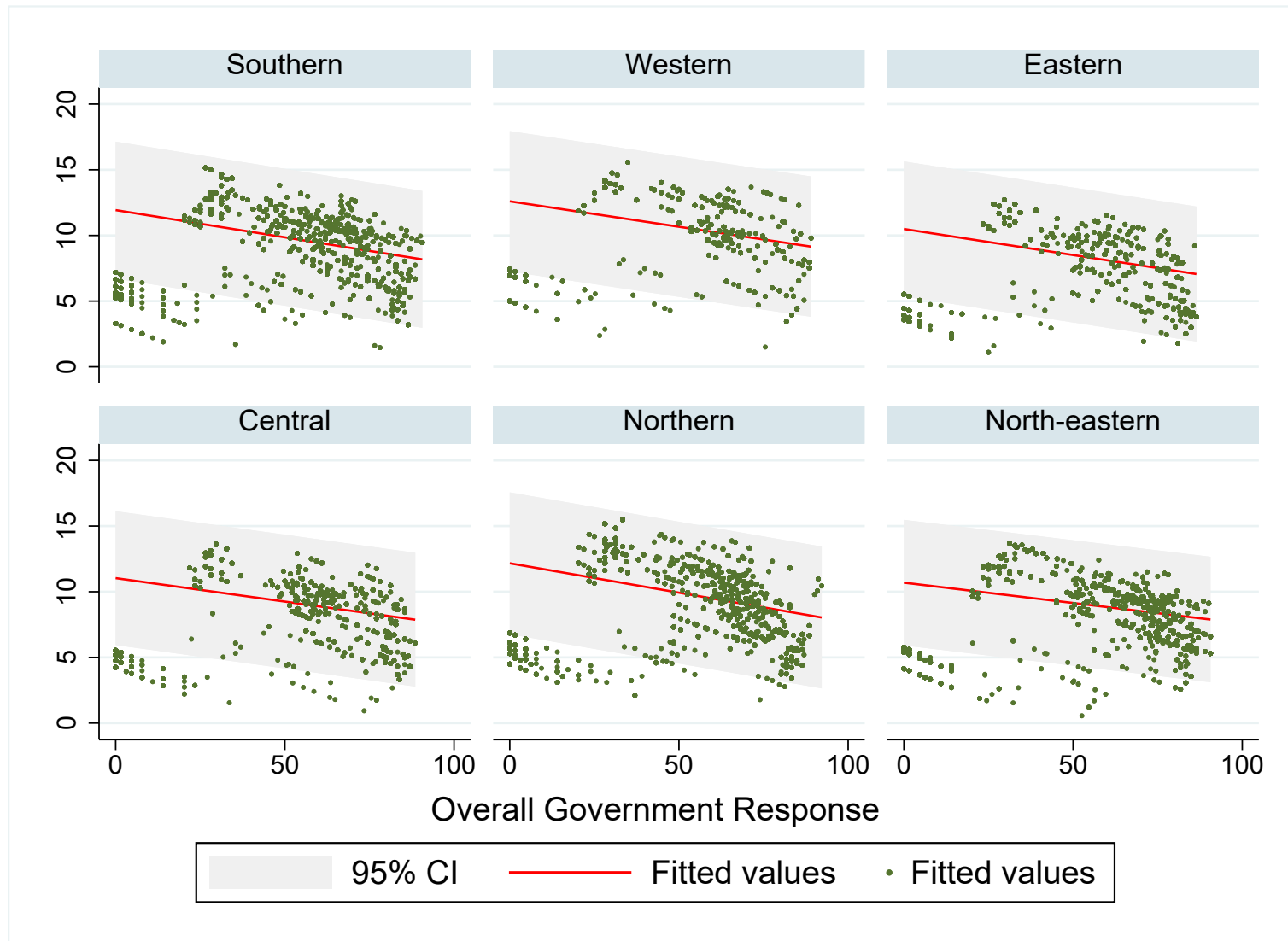


FIGURE 1: Fitted predicted values of dependent variable on Stringency intervention across regions

2.1 Fitted predicted values of death on Government Response

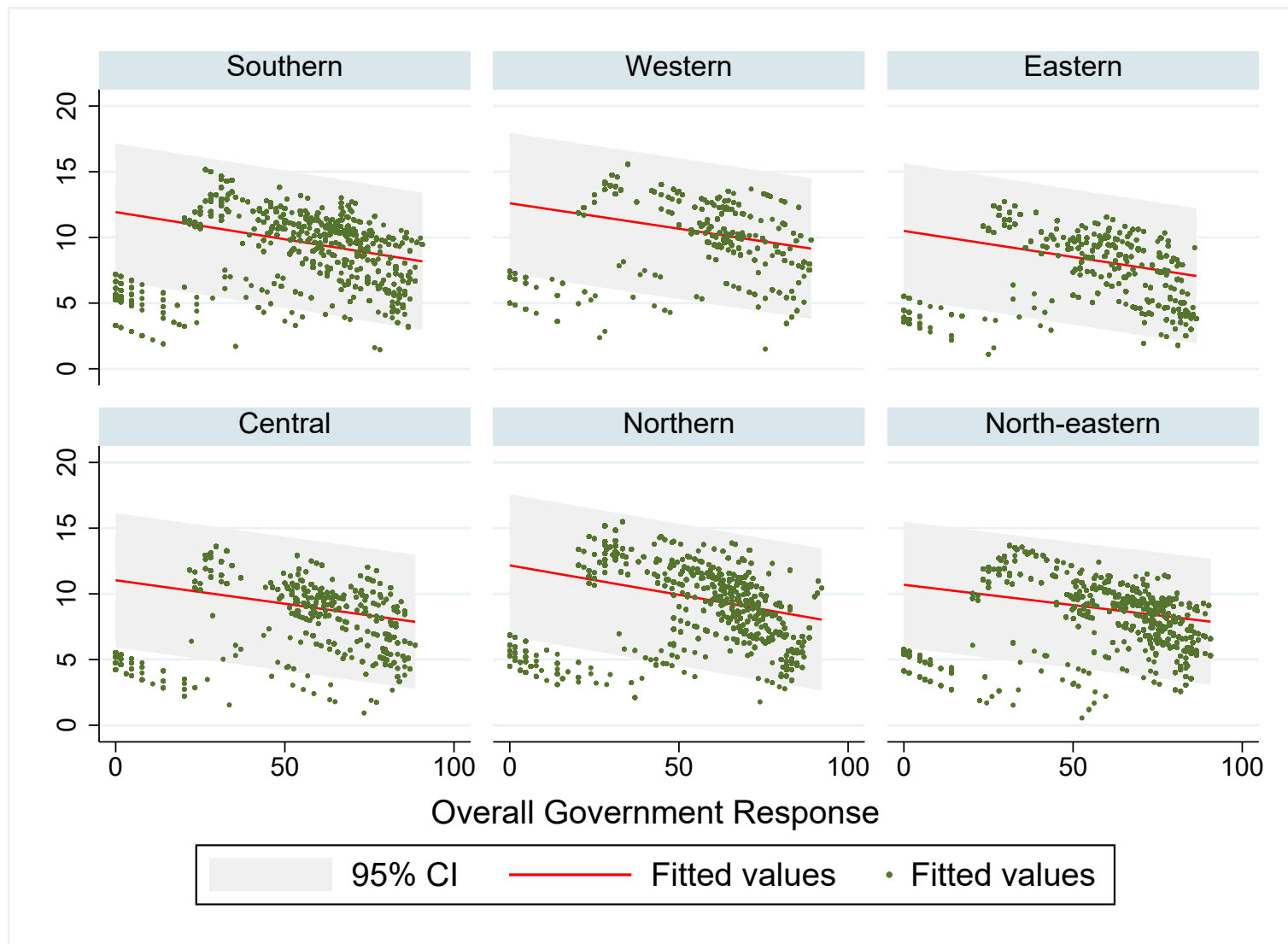


FIGURE 2: Fitted predicted values of dependent variable on overall government response intervention across regions

3 Fitted values of death on Stringency across states

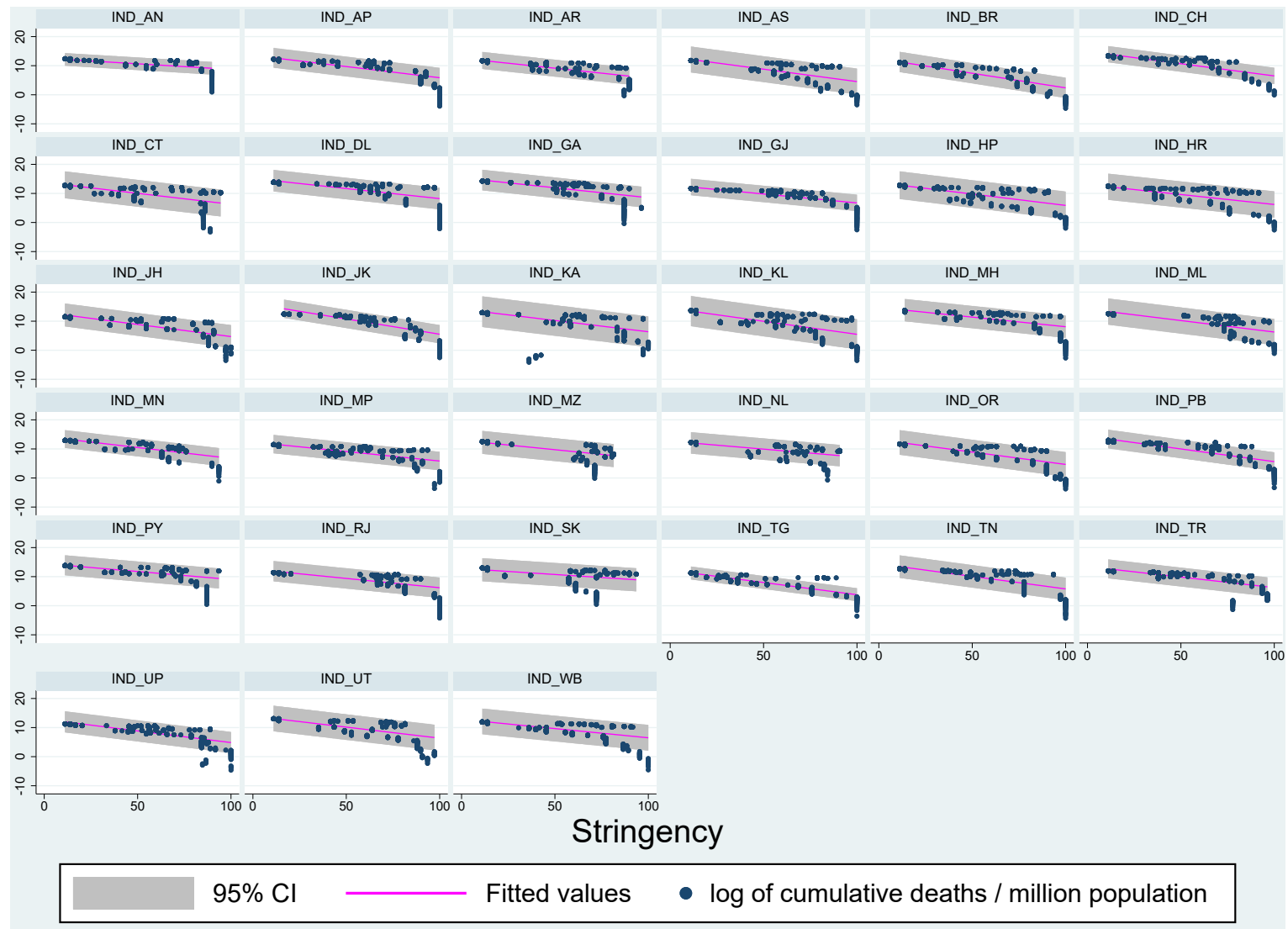


FIGURE 3: Fitted values of dependent variable on stringency intervention across states

3.1 Fitted predicted values of death on Stringency across states

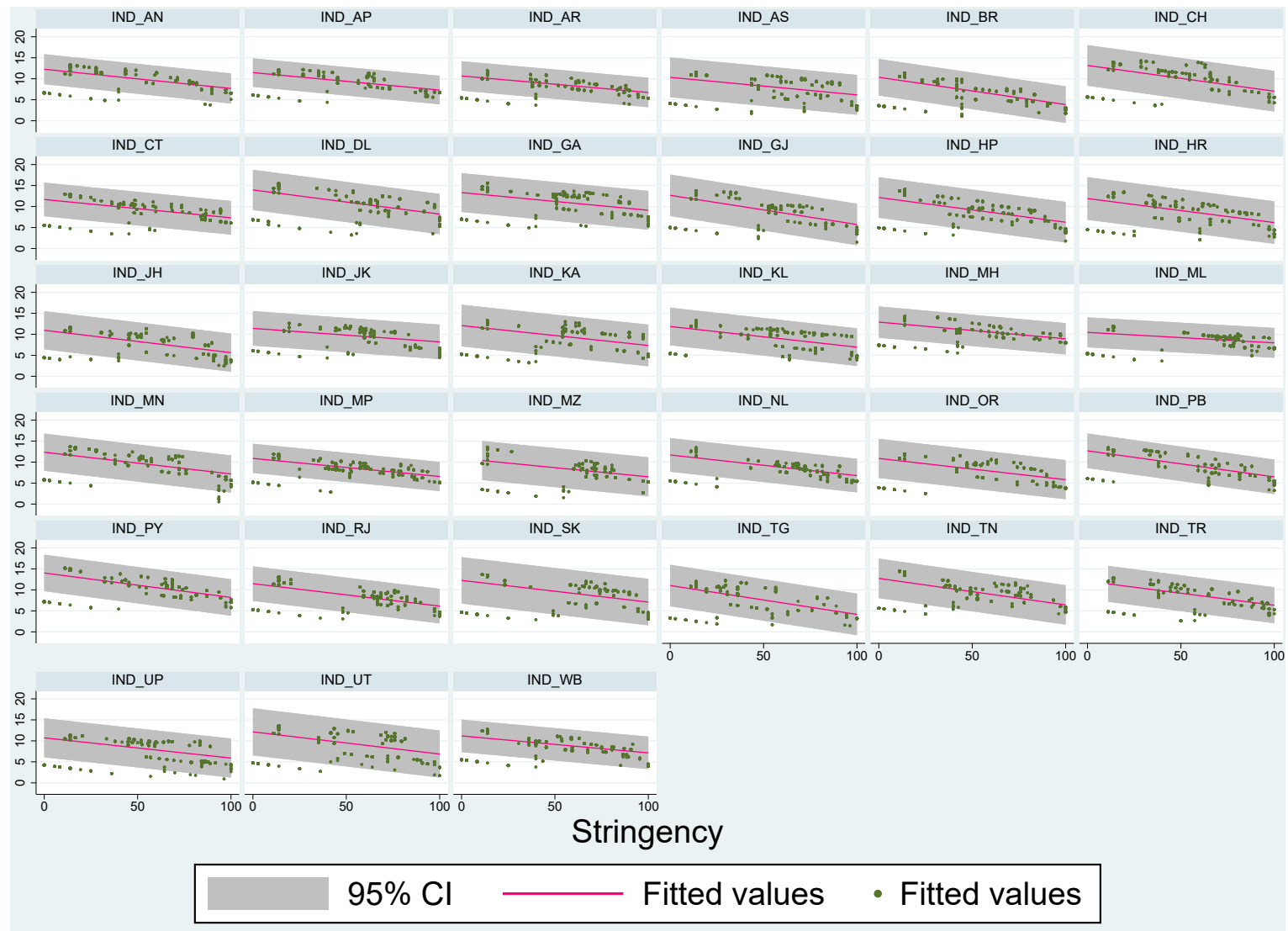


FIGURE 4: Fitted predicted values of dependent variable on stringency intervention across states

3.2 Fitted values of death on Overall Government Response across states

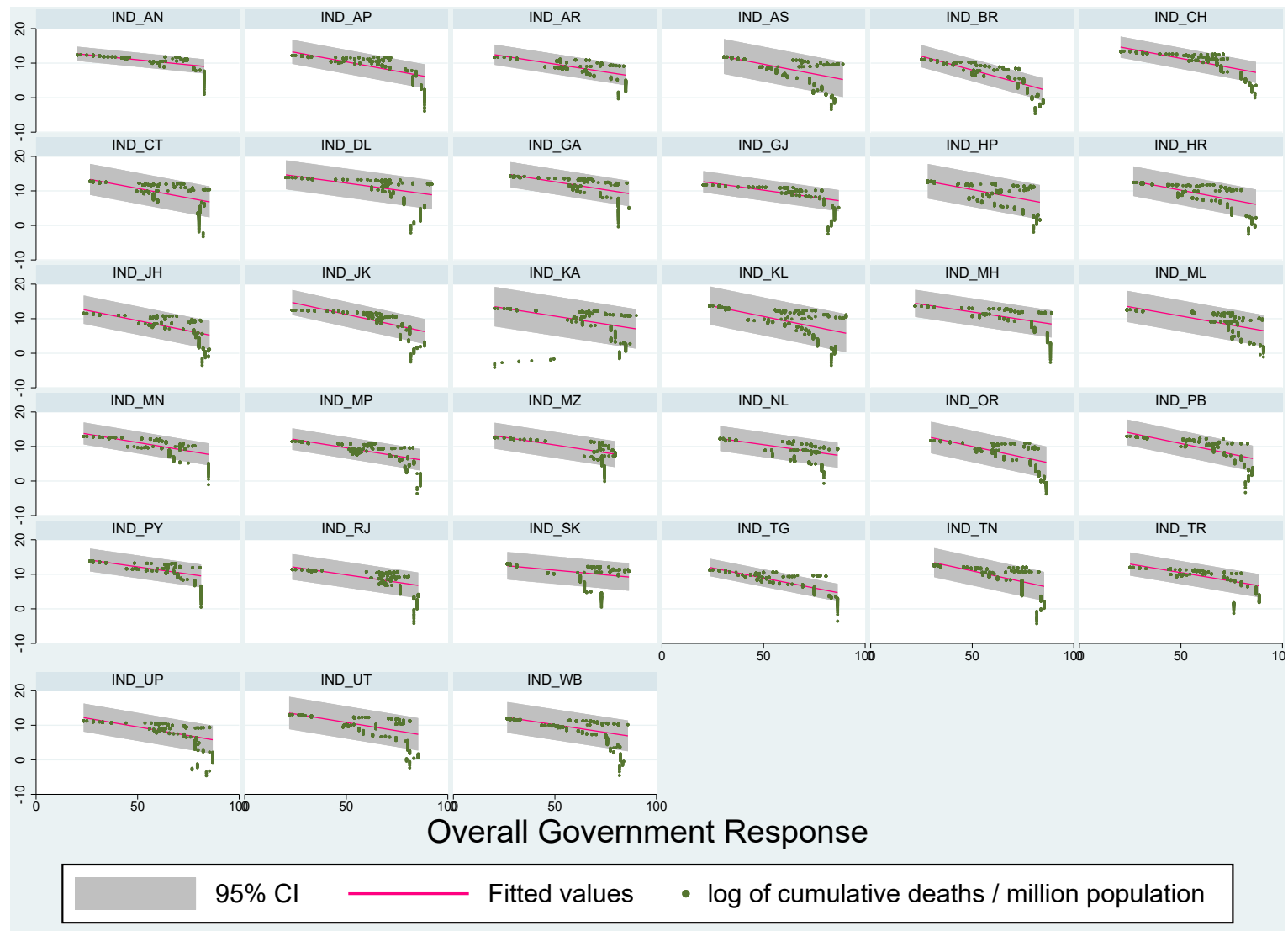


FIGURE 5: Fitted values of dependent variable on government response across states

3.3 Fitted values of death on Stringency across states



FIGURE 6: Fitted predicted values of dependent variable on government response across states