

Supplementary information for

Multi-trait genome-wide association study in 34,394 Chinese women reveals the genetic architecture of plasma metabolites during pregnancy

Siyang Liu,^{1,3#} Jilong Yao,^{2#} Liang Lin,^{4#} Xianmei Lan,^{1,5#} Linlin Wu,^{2,6#} Nannan Kong,⁴ Yuqing Deng,⁷ Yan Li,¹ Jiansheng Xie,² Huanhuan Zhu,¹ Xiaoxia Wu,^{2,6,8} Zilong Li,¹ Likuan Xiong,⁹ Yuan Wang,¹ Jinghui Ren,¹⁰ Xuemei Qiu,⁴ Weihua Zhao,¹¹ Ya Gao,¹ Yuanqing Chen,¹² Fengxia Su,¹ Yun Zhou,¹³ Weiqiao Rao,⁴ Jing Zhang,¹⁴ Guixue Hou,⁴ Liping Huang,¹⁵ Linxuan Li,^{1,5} Xinhong Liu,¹⁶ Chao Nie,¹ Liqiong Luo,¹⁷ Zengyou Liu,¹⁸ Fang Chen,¹⁹ Shengmou Lin,²⁰ Lijian Zhao,⁴ Qingmei Fu,²¹ Dan Jiang,⁴ Ye Yin,²² Xun Xu,^{1,23} Jian Wang,²² Huanming Yang,^{1,24} Rong Wang,^{4#} Jianmin Niu^{2*}, Fengxiang Wei,^{25*} Xin Jin,^{1,26,*} Siqu Liu,^{1,*}

1 BGI-Shenzhen, Shenzhen 518083, Guangdong, China

2 Shenzhen Maternity & Child Healthcare Hospital, Shenzhen, Guangdong, 518000, China

3 School of Public Health (Shenzhen), Sun Yat-sen University, Shenzhen, Guangdong 510006, China

4 BGI Genomics, BGI-Shenzhen, Shenzhen 518083, Guangdong, China

5 College of Life Sciences, University of Chinese Academy of Sciences, Beijing 100049, China

6 Department of Obstetrics, Shenzhen Maternity & Child Healthcare Hospital, Shenzhen, Guangdong, 518000, China

7 Peking University Shenzhen Hospital, Shenzhen 518035, Guangdong, China

8 Department of Obstetrics, Shenzhen Maternity & Child Healthcare Hospital, The First School of Clinical Medicine, Southern Medical University, Shenzhen, Guangdong, 518000, China

9 Baoan Women's and Children's Hospital, Jinan University, Shenzhen 518133, Guangdong, China

10 Shenzhen People's Hospital, 2nd Clinical Medical College of Jinan University, Shenzhen 518020, Guangdong, China

11 Shenzhen Second People Hospital, Shenzhen 518035, Guangdong, China

12 Nanshan Medical Group Headquarters of Shenzhen, Shenzhen 518000, Guangdong, China

13 Luohu People's Hospital of Shenzhen, Shenzhen 518001, Guangdong, China

14 Shenzhen Nanshan Maternity&Child Healthcare Hospital, Shenzhen 518000, Guangdong, China

15 Shenzhen Baoan District Shajing People's Hospital, Shenzhen 518104, Guangdong, China

16 Shenzhen Longhua District Central Hospital, Shenzhen 518110, Guangdong, China

17 The People's Hospital of Longhua-Shenzhen, Shenzhen 518109, Guangdong, China

18 Shenzhen Nanshan People's Hospital, Shenzhen 518052, Guangdong, China

19 MGI, BGI-Shenzhen, Shenzhen 518083, China

20 The University of Hong Kong - Shenzhen Hospital, Shenzhen 518038, Guangdong, China

21 Baoan People's Hospital of Shenzhen, Shenzhen 518100, Guangdong, China

22 BGI, BGI-Shenzhen, Shenzhen 518083, China

23 Guangdong Provincial Key Laboratory of Genome Read and Write

24 Guangdong Provincial Academician Workstation of BGI Synthetic Genomics

25 Longgang District Maternity&Child Healthcare Hospital of Shenzhen City, Shenzhen 518172, Guangdong, China

26 School of Medicine, South China University of Technology, Guangzhou 51006, Guangdong, China

Those authors contributed equally

\$ Senior author

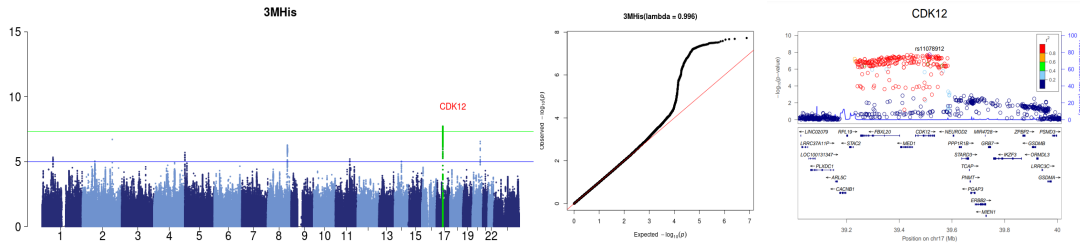
*Correspondence to Siqu Liu siqu.liu@genomics.cn, Xin Jin jinxin@genomics.cn, Fengxiang Wei haowei727499@163.com and Jianmin Niu njianmin@163.com.

Table of Contents

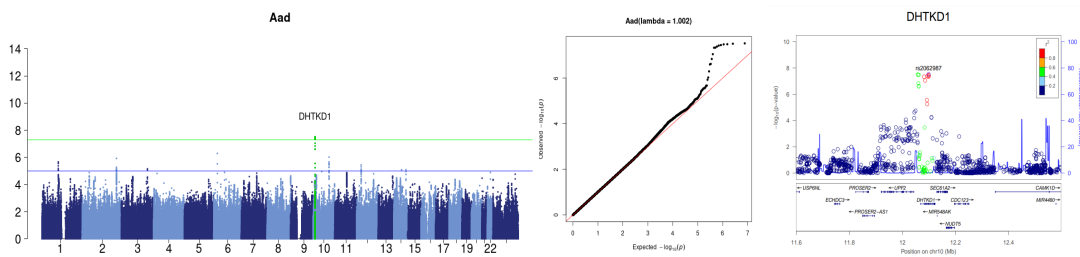
Supplementary Figures	3
Figure S1. Spearman pairwise correlation for metabolites	3
Figure S2. Manhattan, quantile-quantile, and locuszoom plots for all the 14 amino acids that consist of at least one significant loci	7
Figure S3. Manhattan, quantile-quantile, and locuszoom plots for 7 hormones that consist of at least one significant locus.....	9
Figure S4. Manhattan, quantile-quantile, and locuszoom plots for 7 metal elements that consist of at least one significant loci.....	12
Figure S5. Manhattan, quantile-quantile, and locuszoom plots for 5 hormones that consist of at least one significant locus.....	14
Figure S6. SNP heritability of the metabolite level in maternal plasma.....	15
Figure S7. Comparison of the heritability between the previous study and our study	15
Figure S8. Comparison of effect size between two sequencing technologies	16
Figure S9. Comparison of effect size with a non-pregnancy cohort.....	17
Figure S10. Forest plot for 27 loci affecting two or more metabolite molecules (p-value < 0.001)	21
Figure S11. Colocalization analysis reveals shared causal variants between seven maternal metabolites and pregnancy phenotypes	27

Amino Acids

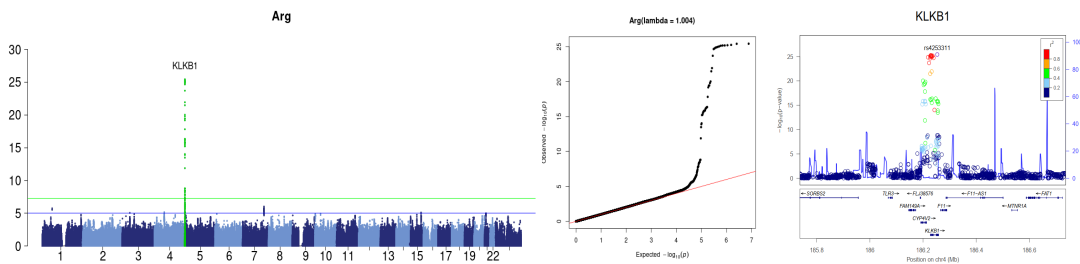
3MHis



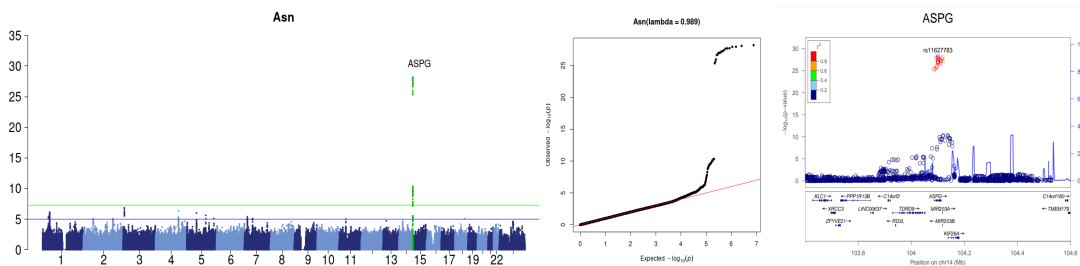
Aad



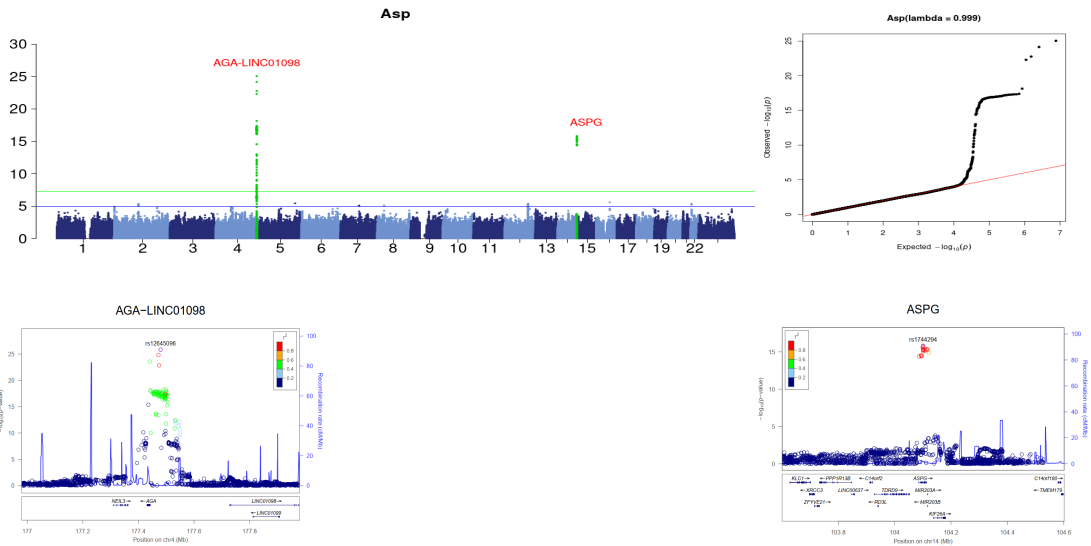
Arg



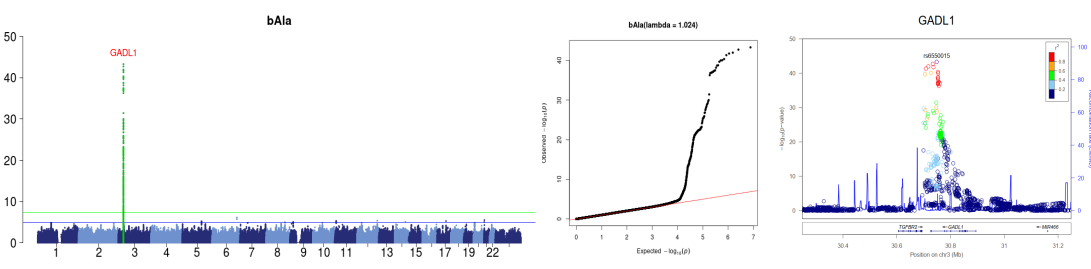
Asn



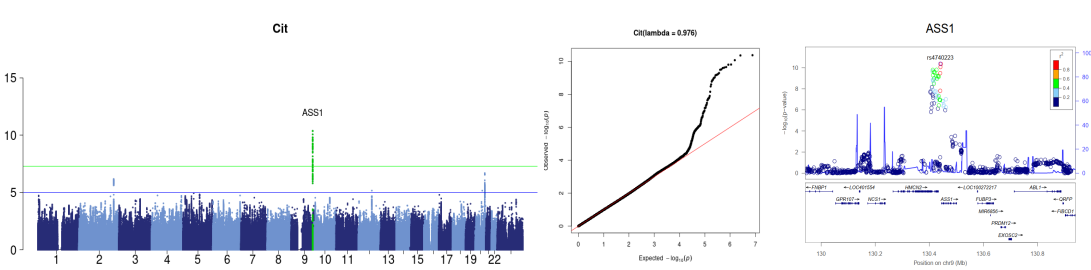
Asp



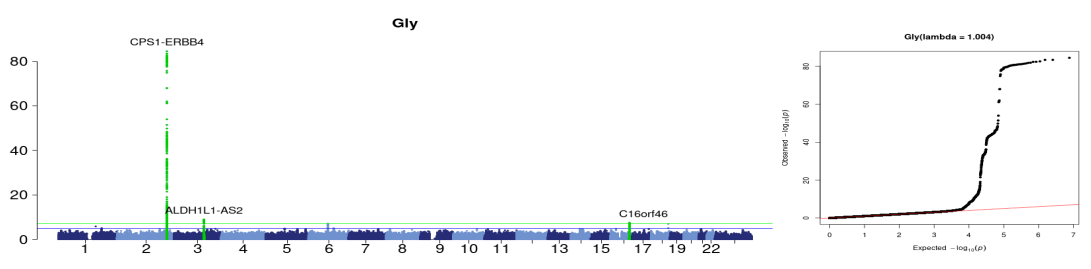
bAla

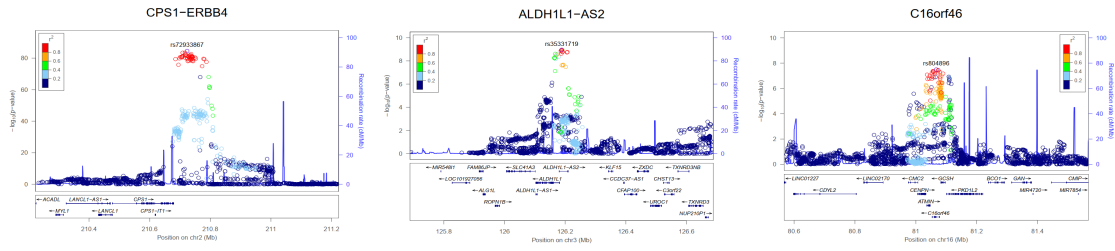


Cit

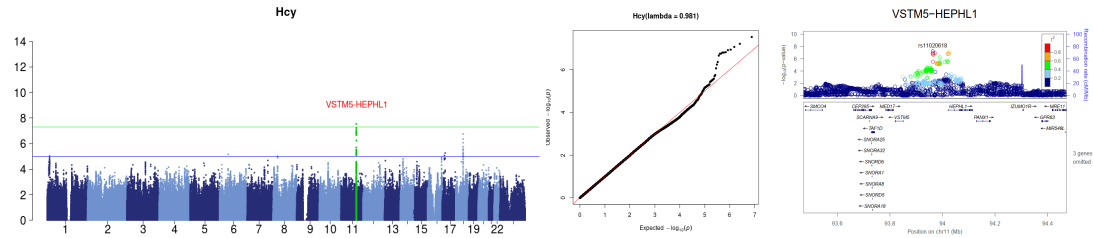


Gly

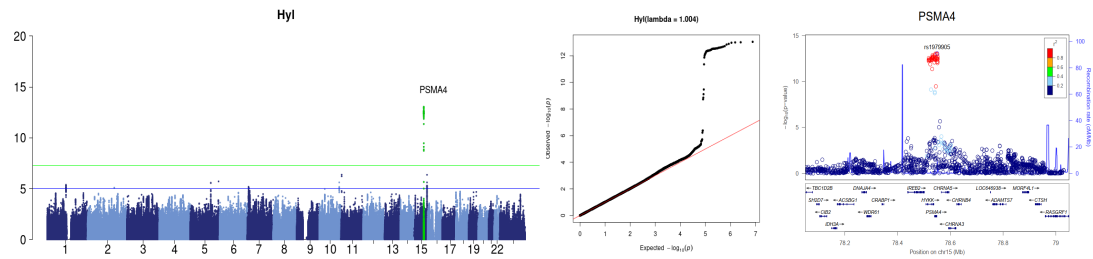




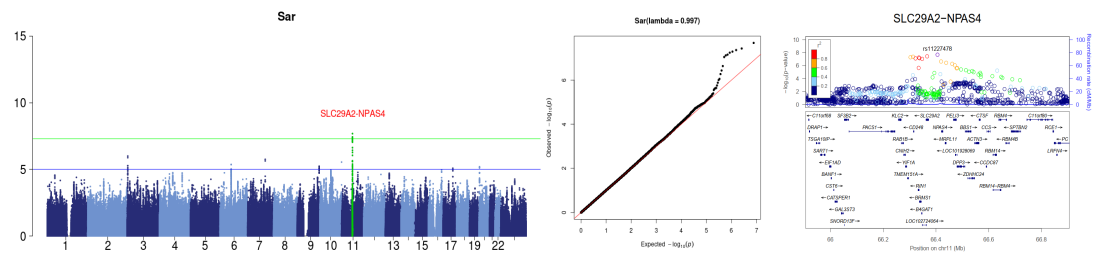
Hcy



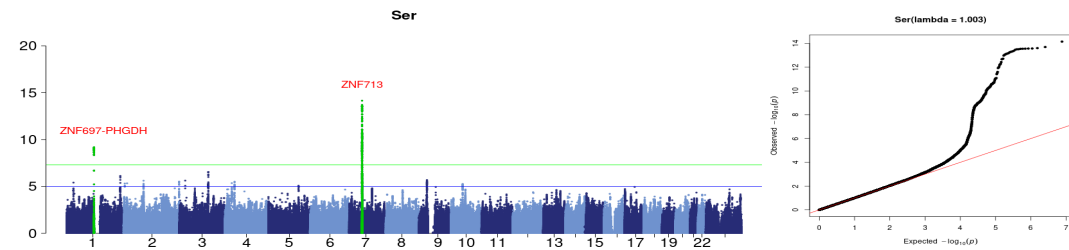
Hyl

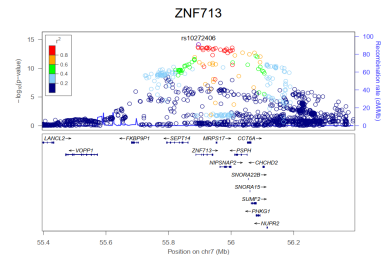
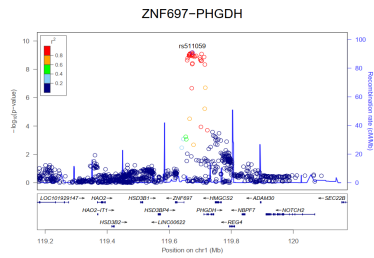


Sar

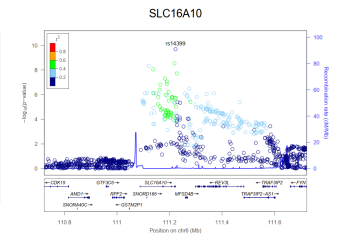
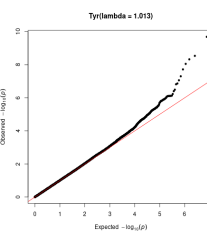
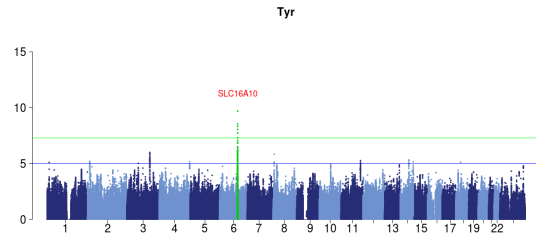


Ser





Tyr



Val

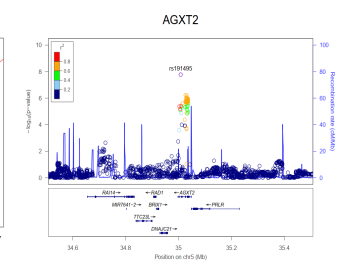
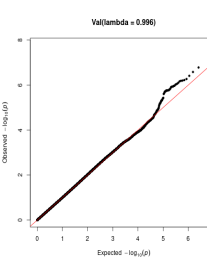
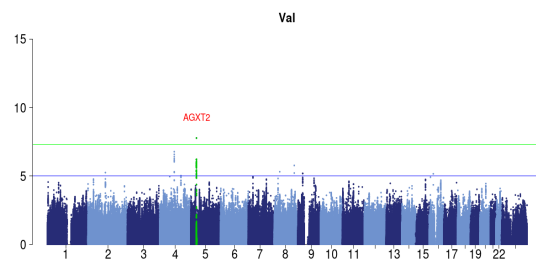
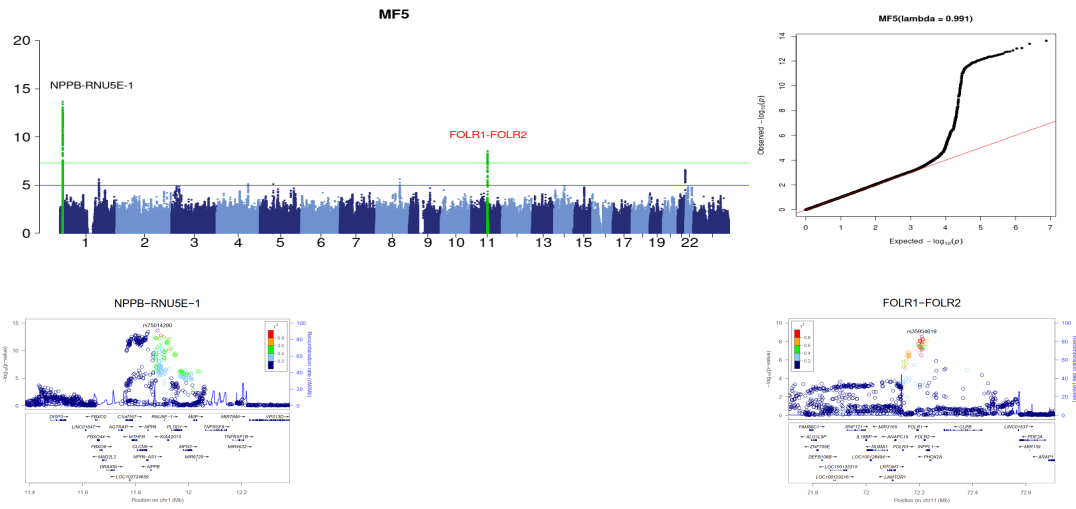


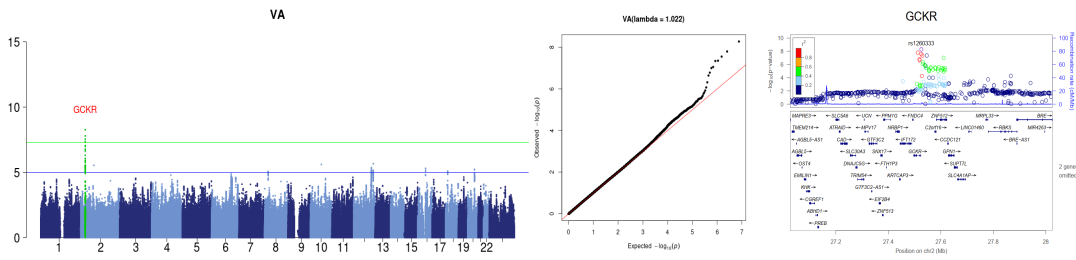
Figure S2. Manhattan, quantile-quantile, and locuszoom plots for all the 14 amino acids that consist of at least one significant loci

Vitamins

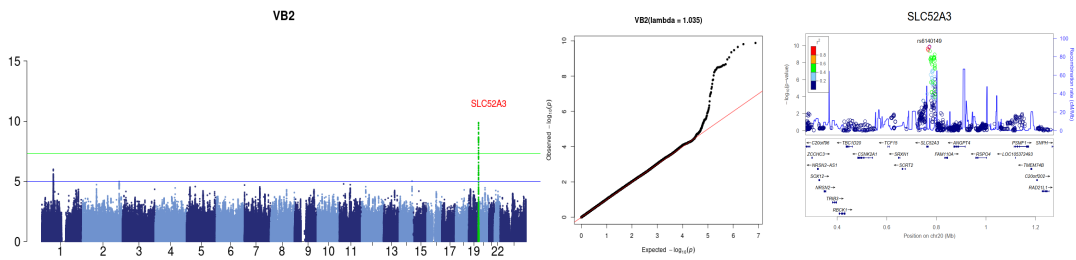
MF5



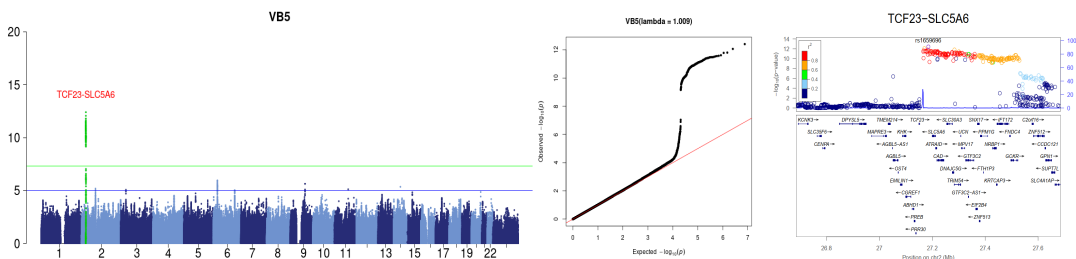
VA



VB2



VB5



VD3

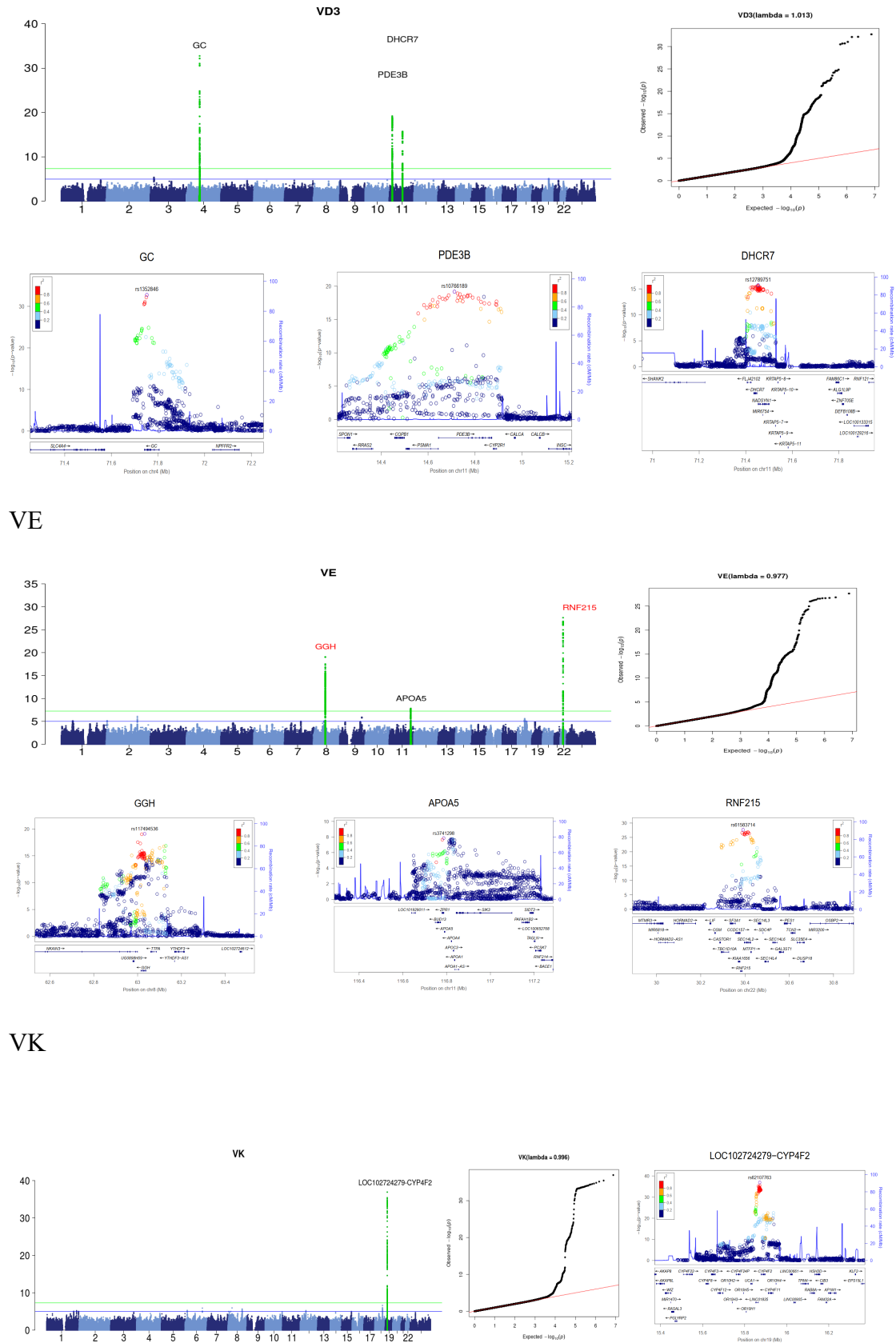
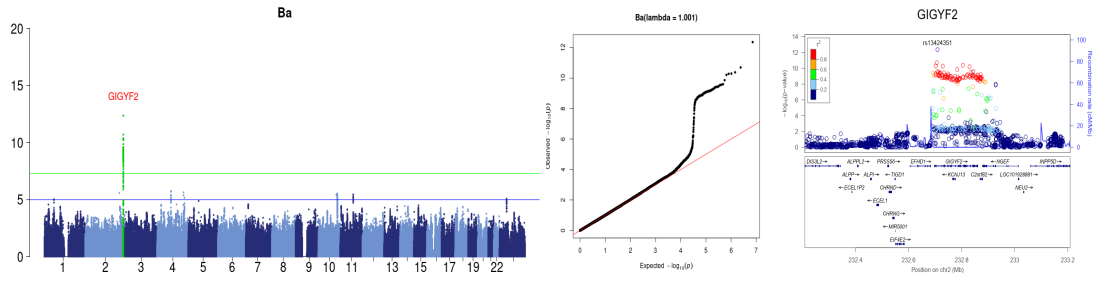


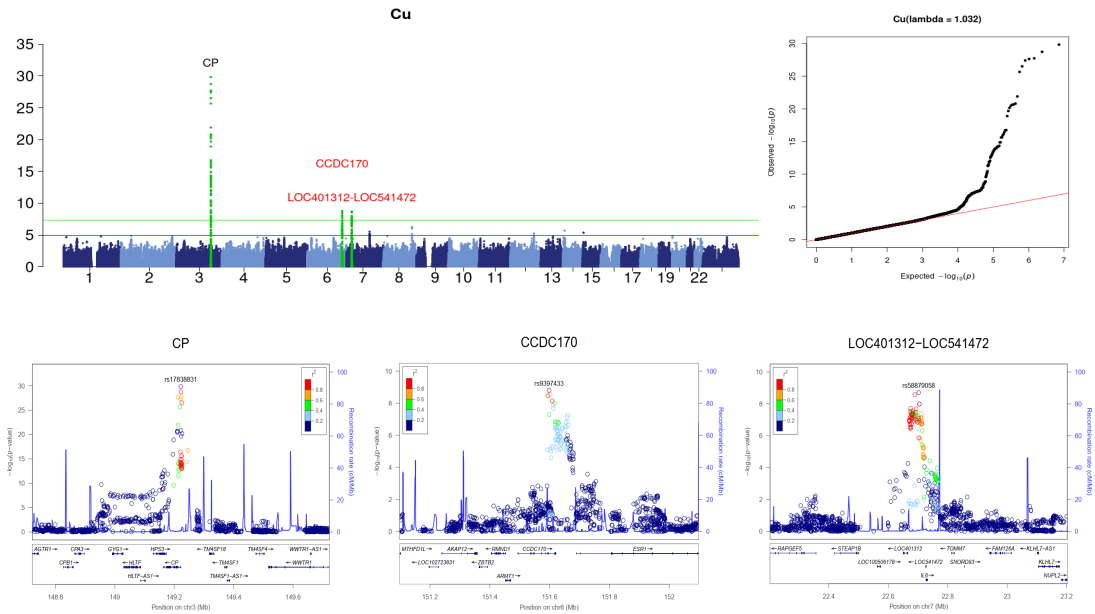
Figure S3. Manhattan, quantile-quantile, and locuszoom plots for 7 hormones that consist of at least one significant locus

Elements

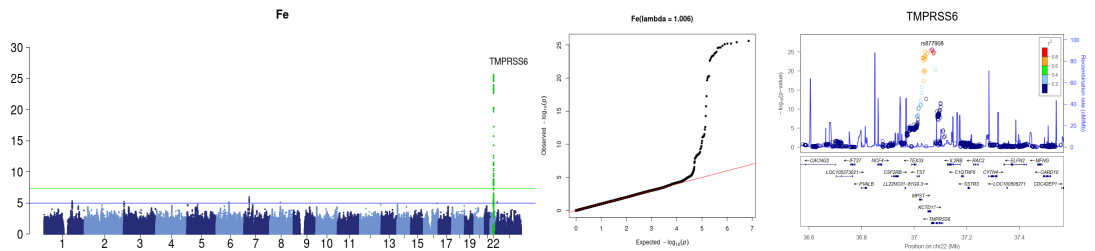
Ba



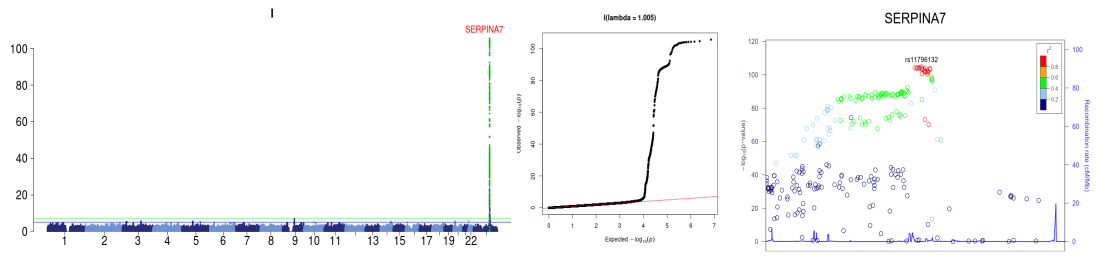
Cu



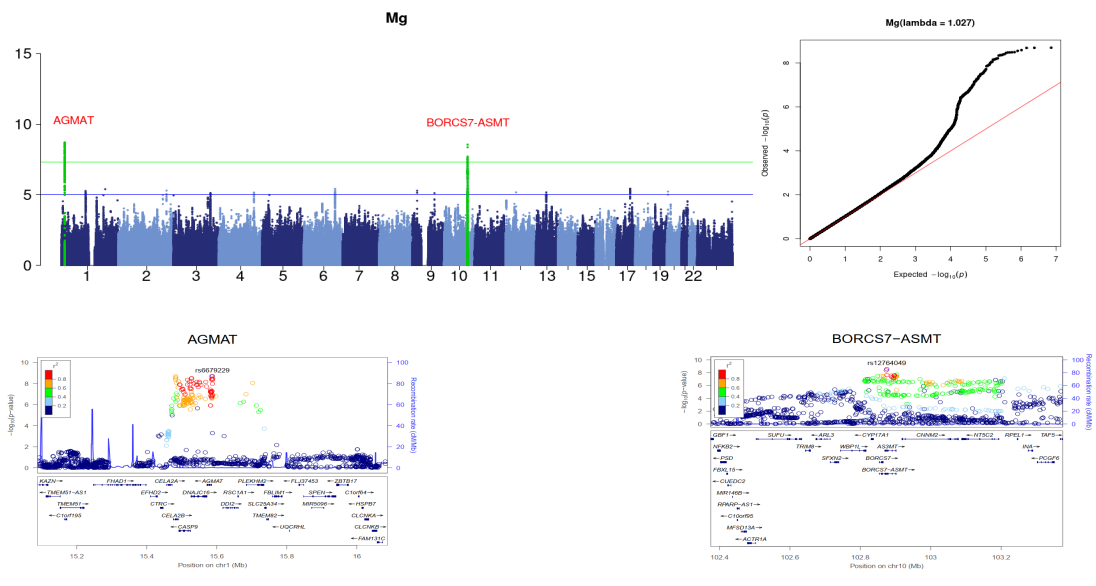
Fe



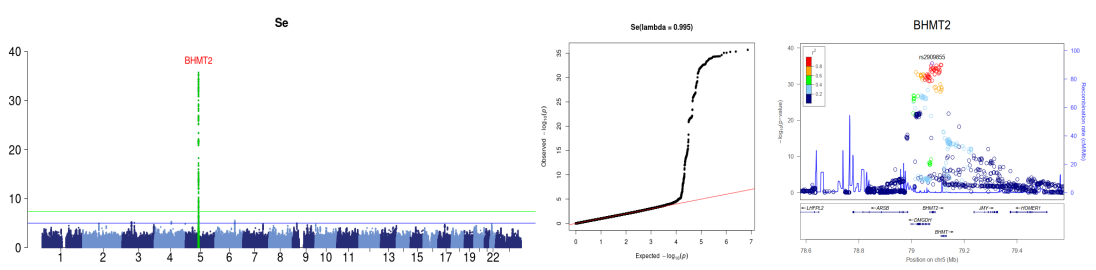
I



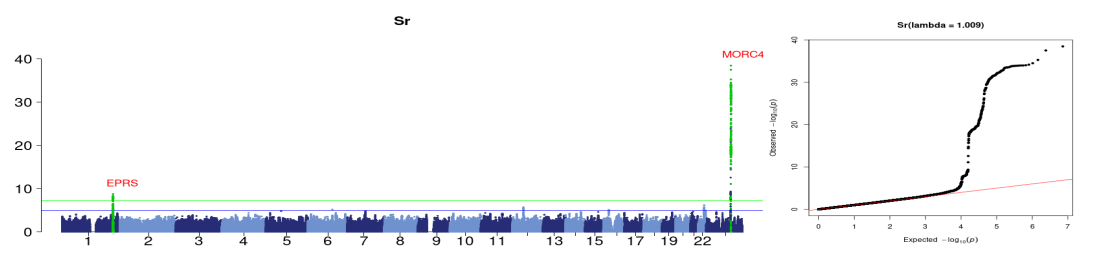
Mg



Se



Sr



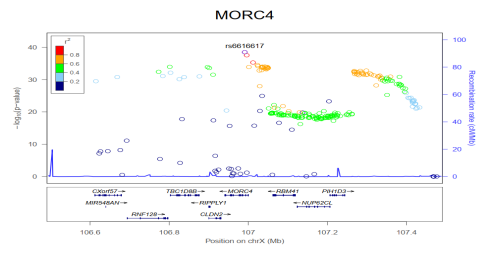
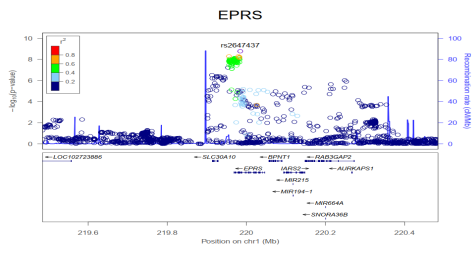
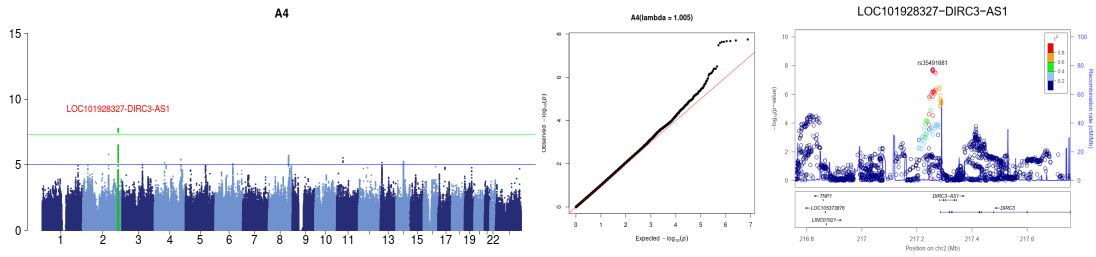


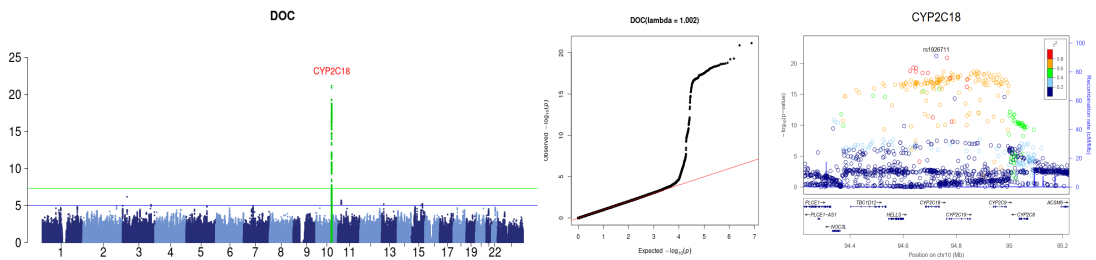
Figure S4. Manhattan, quantile-quantile, and locuszoom plots for 7 metal elements that consist of at least one significant loci

Hormone

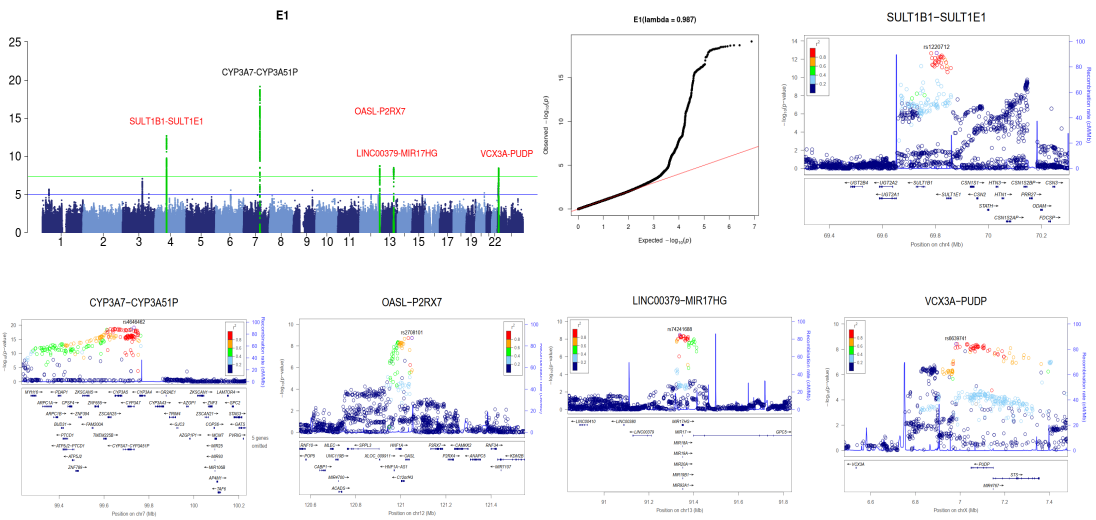
A4



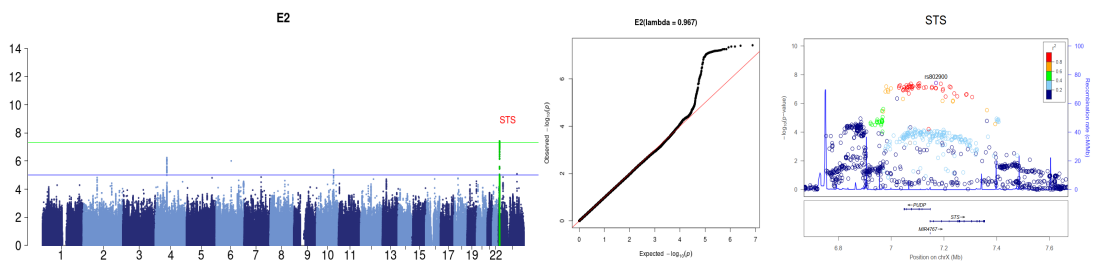
DOC



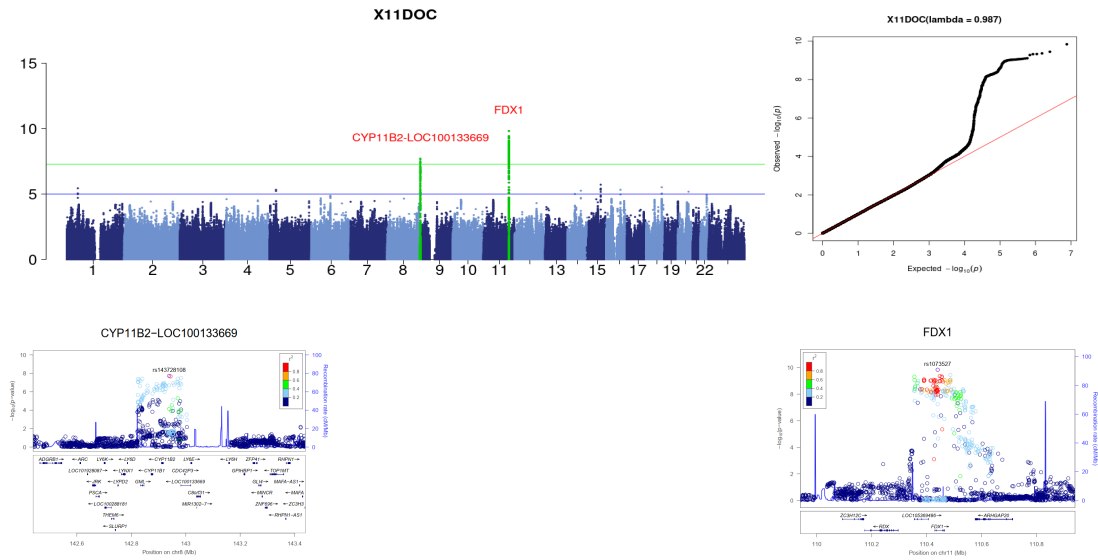
E1



E2



11DOC



17OHP

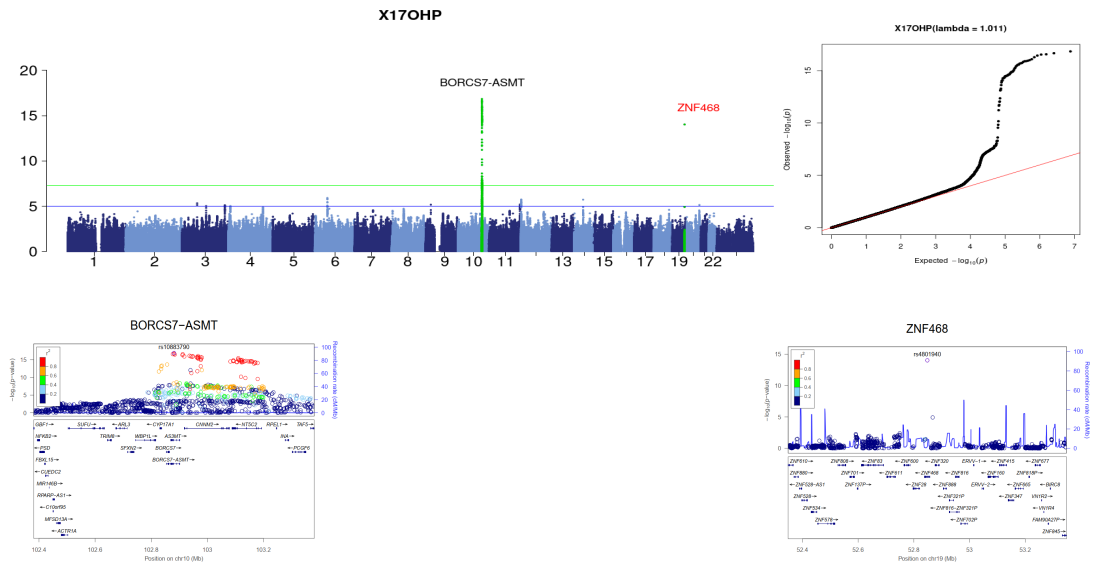


Figure S5. Manhattan, quantile-quantile, and locuszoom plots for 5 hormones that consist of at least one significant locus

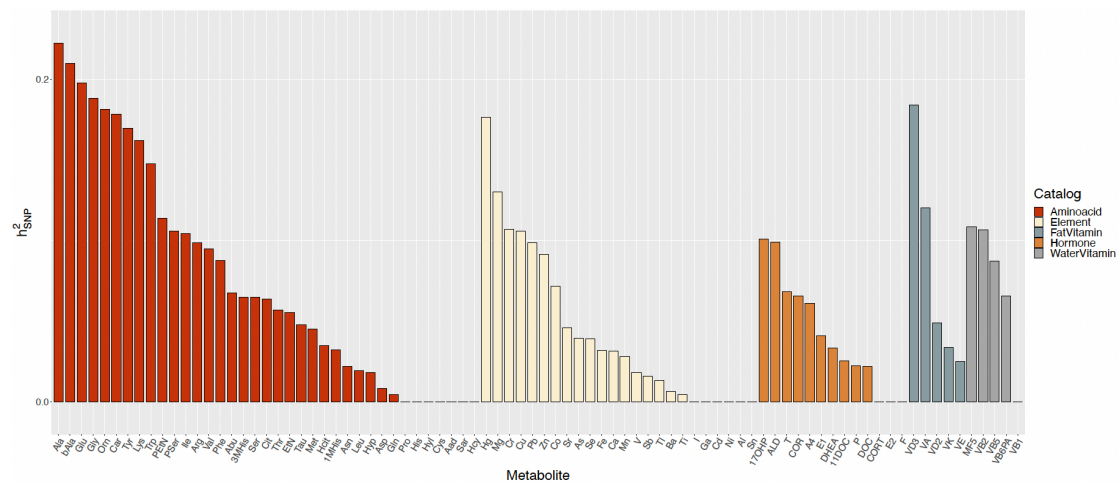


Figure S6. SNP heritability of the metabolite level in maternal plasma

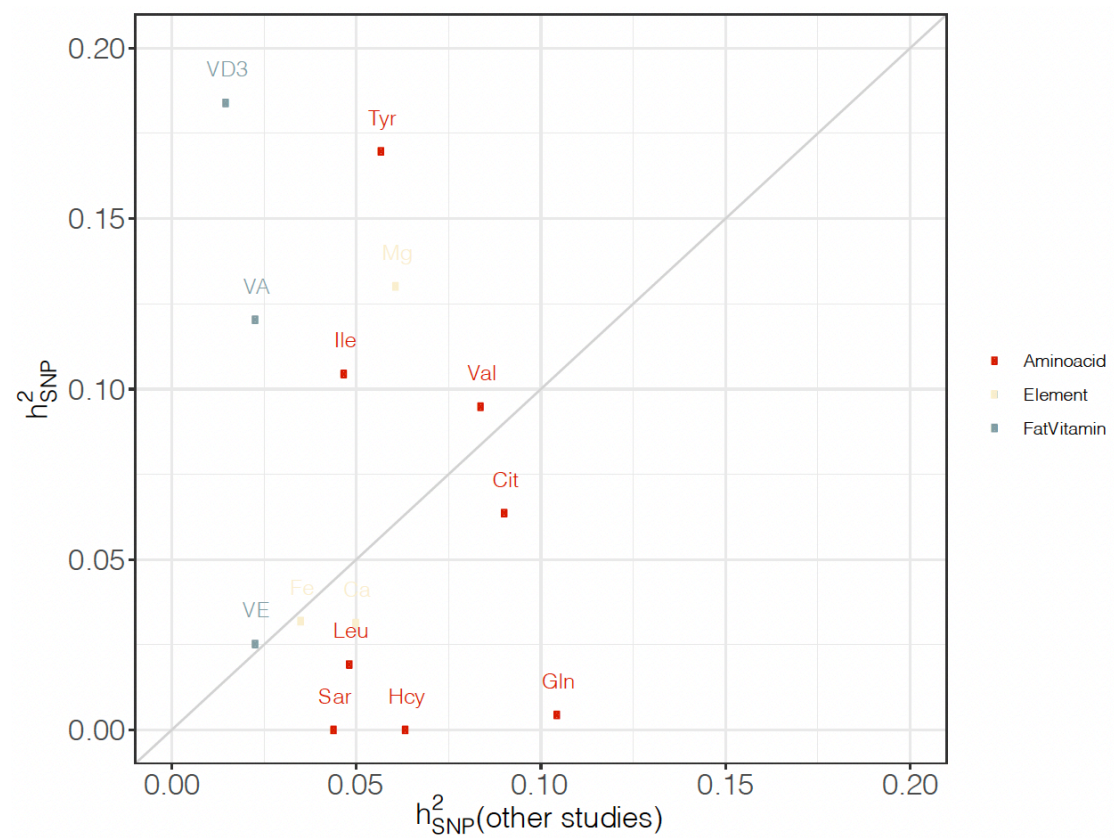


Figure S7. Comparison of the heritability between the previous study and our study

Known heritability refers to the heritability estimation from reports of Kettunen et al., 2016 and Neale’s lab (Table S6). Only metabolites with previously known heritability were shown in this plot.

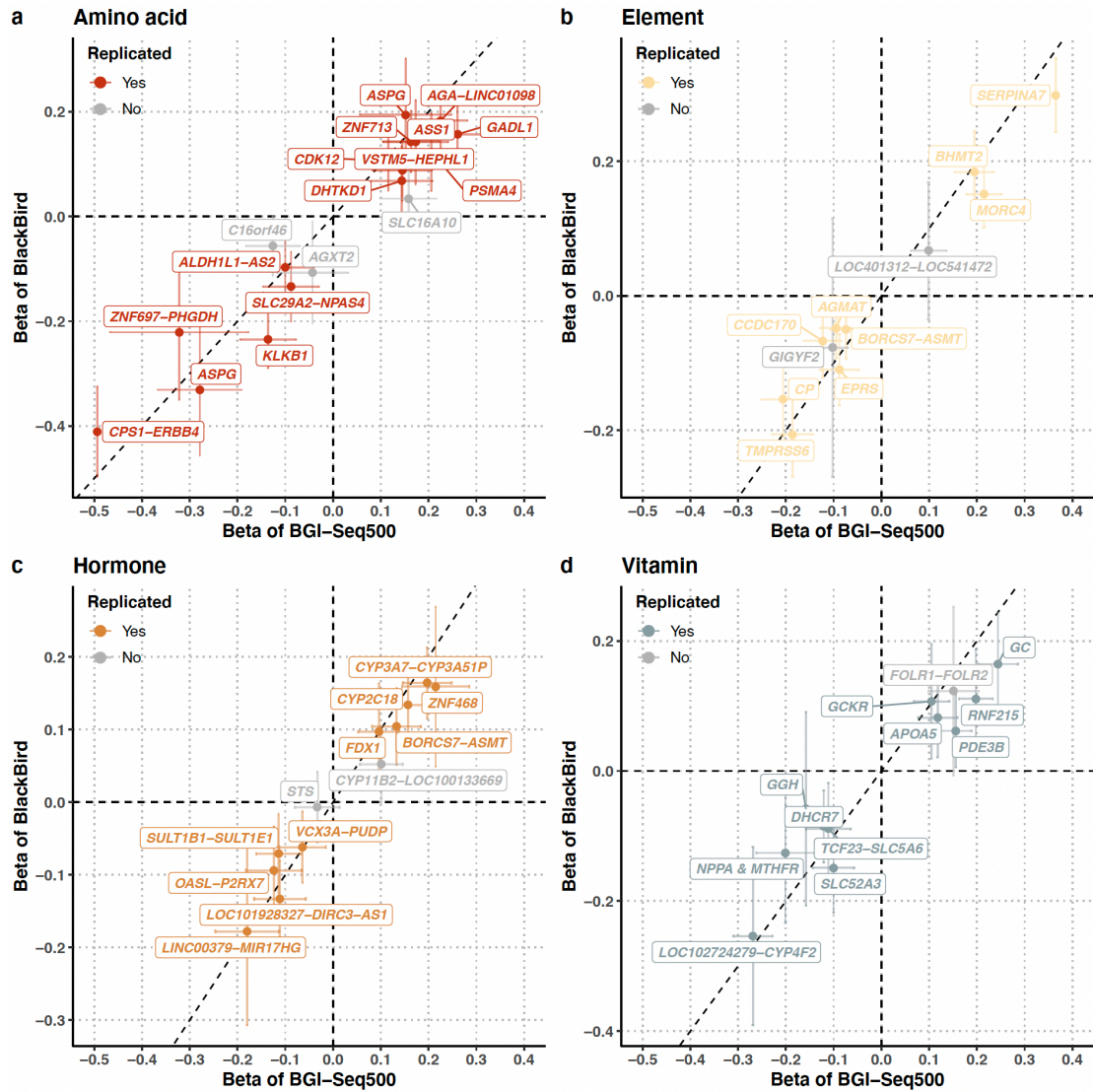


Figure S8. Comparison of effect size between two sequencing technologies
 Comparison of the effect size of the 53 significant loci between the BGI-Seq500 sequencing and the BlackBird sequencing platform. A locus was denoted as replicated when it has the same direction of effect and p-value smaller than 0.05 in both gwas analysis from both sequencing technologies.

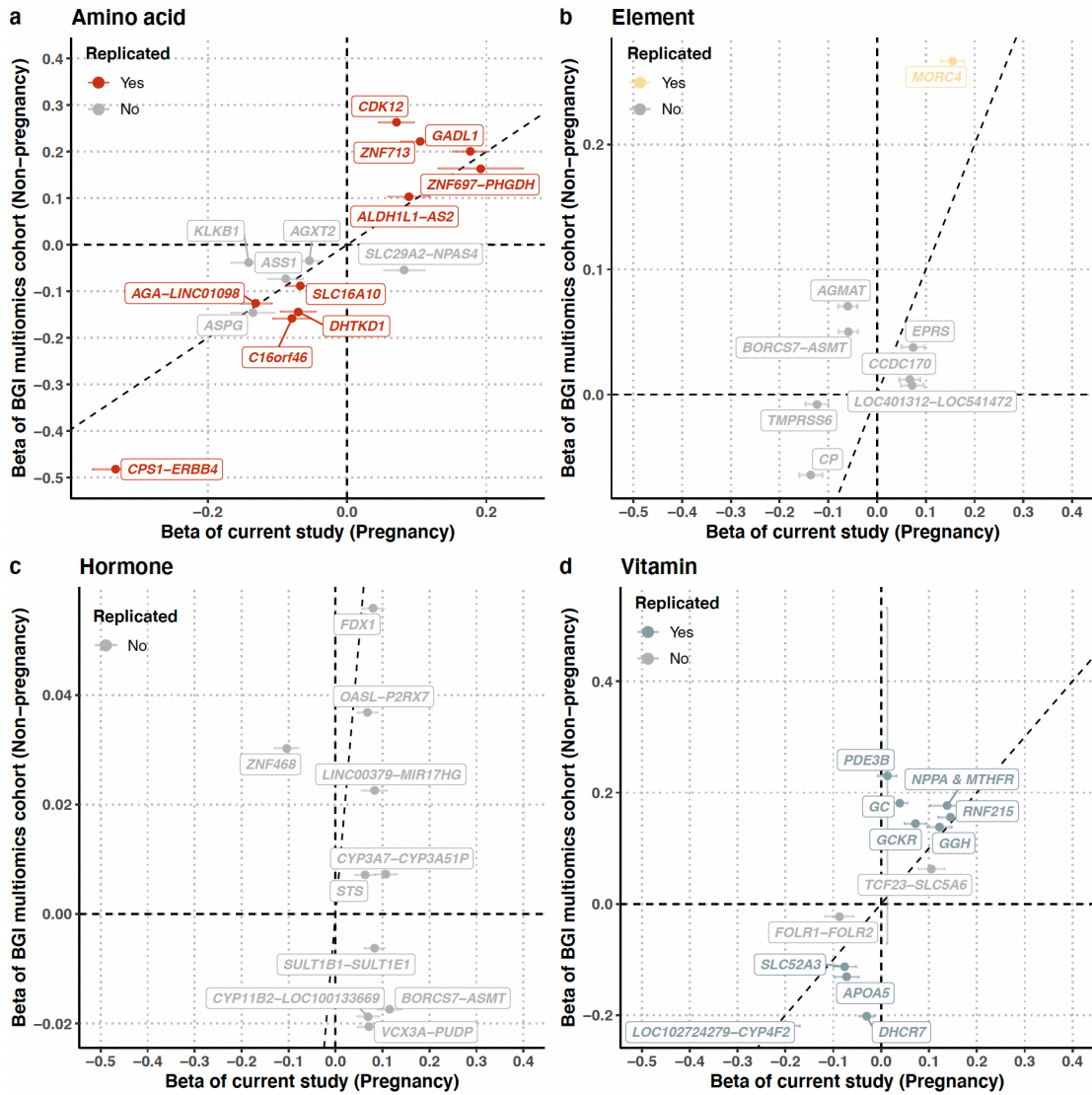
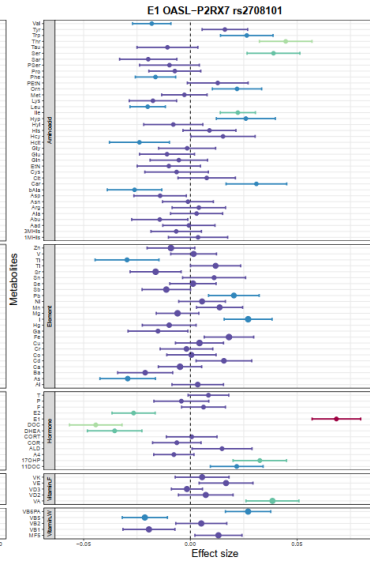
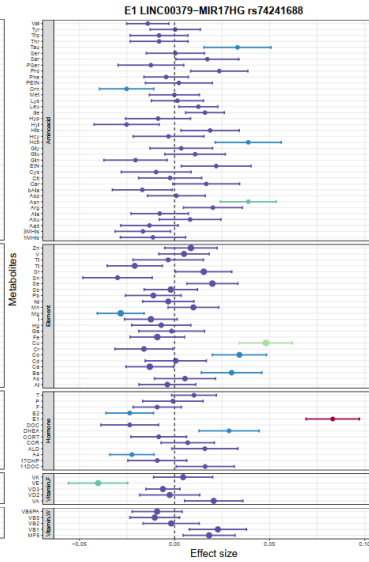
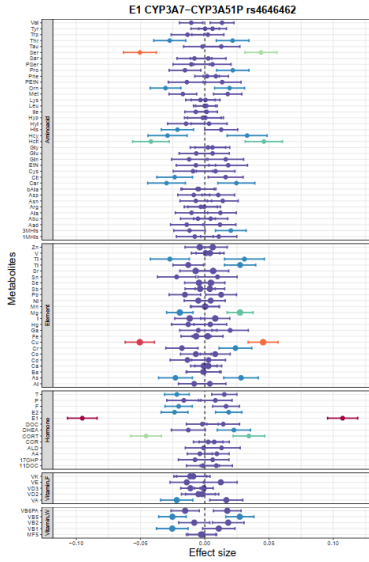
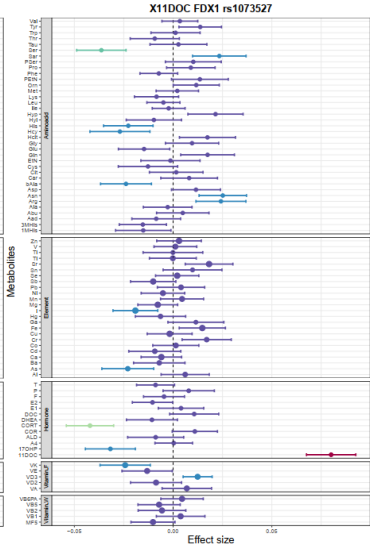
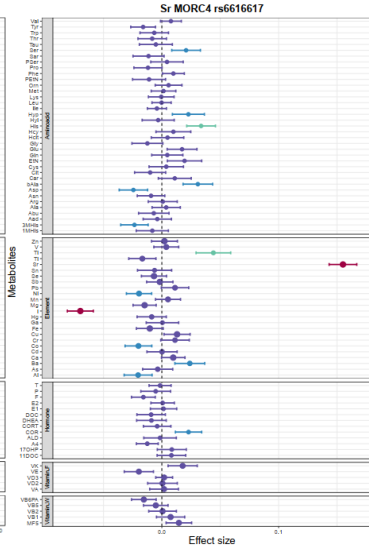
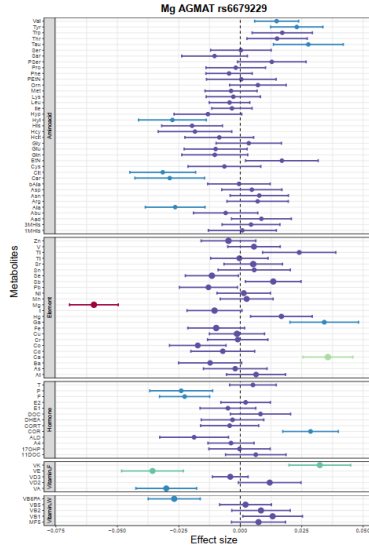
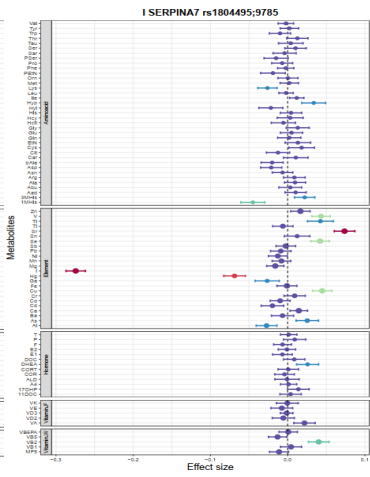
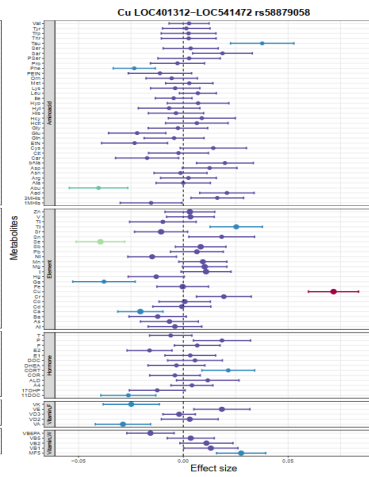
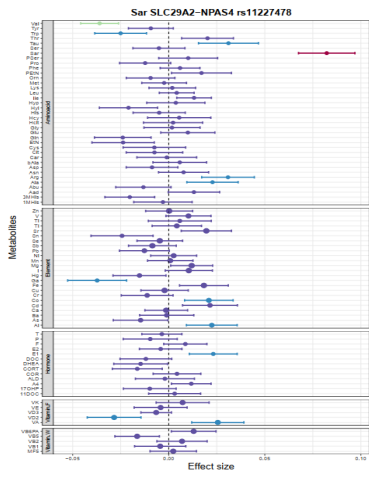


Figure S9. Comparison of effect size with a non-pregnancy cohort

Comparison of the effect size of the 53 significant loci between the current study and a non-pregnancy cohort (BGI multiomics cohort). A locus was denoted as replicated when it has the same direction of effect and p-value smaller than 0.05 in both gwas analysis from both sequencing technologies.



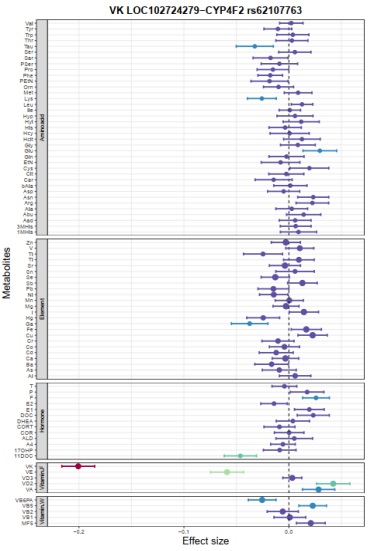
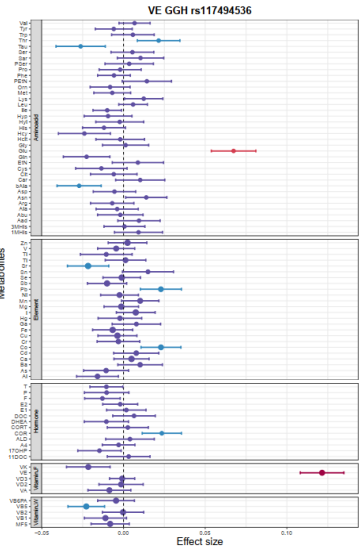
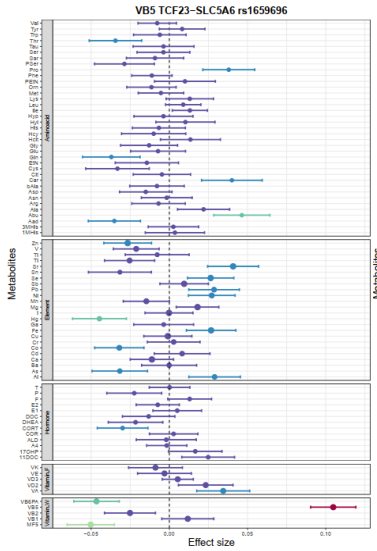
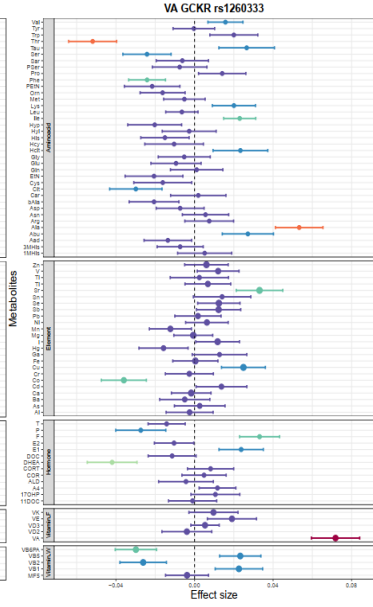
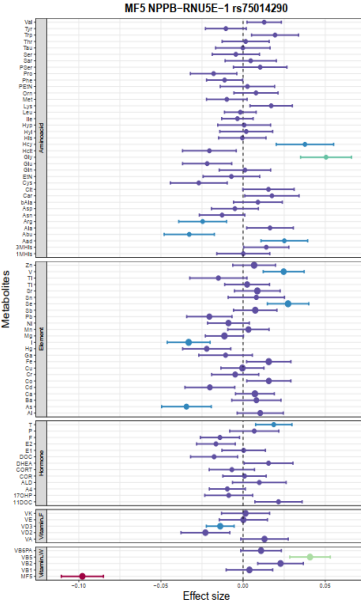
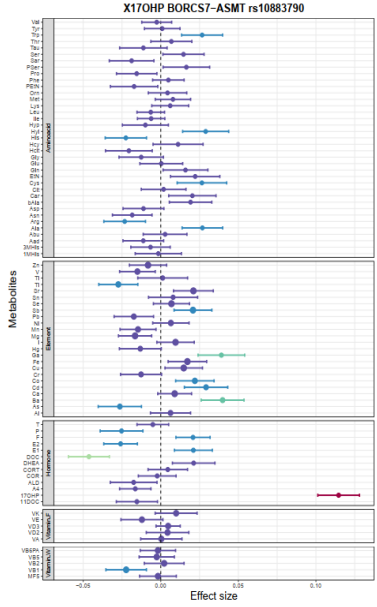
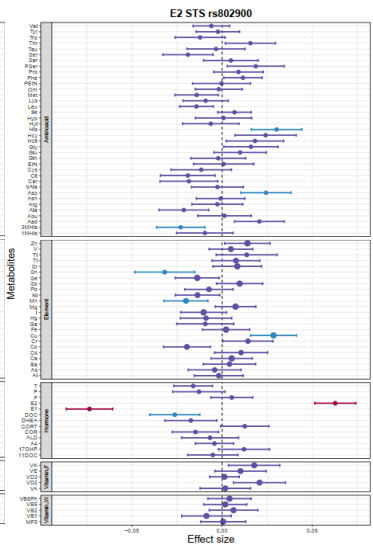
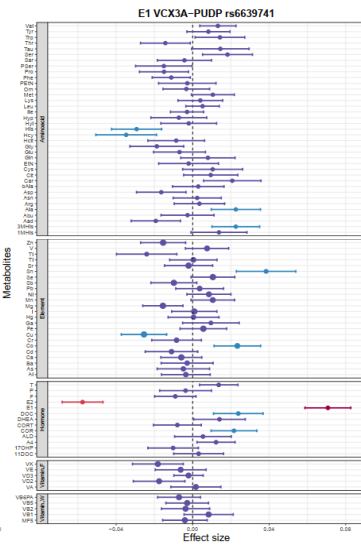
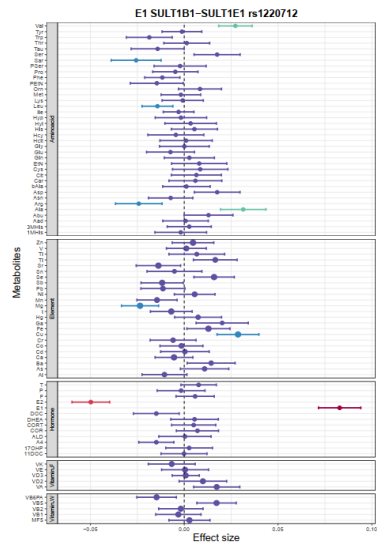
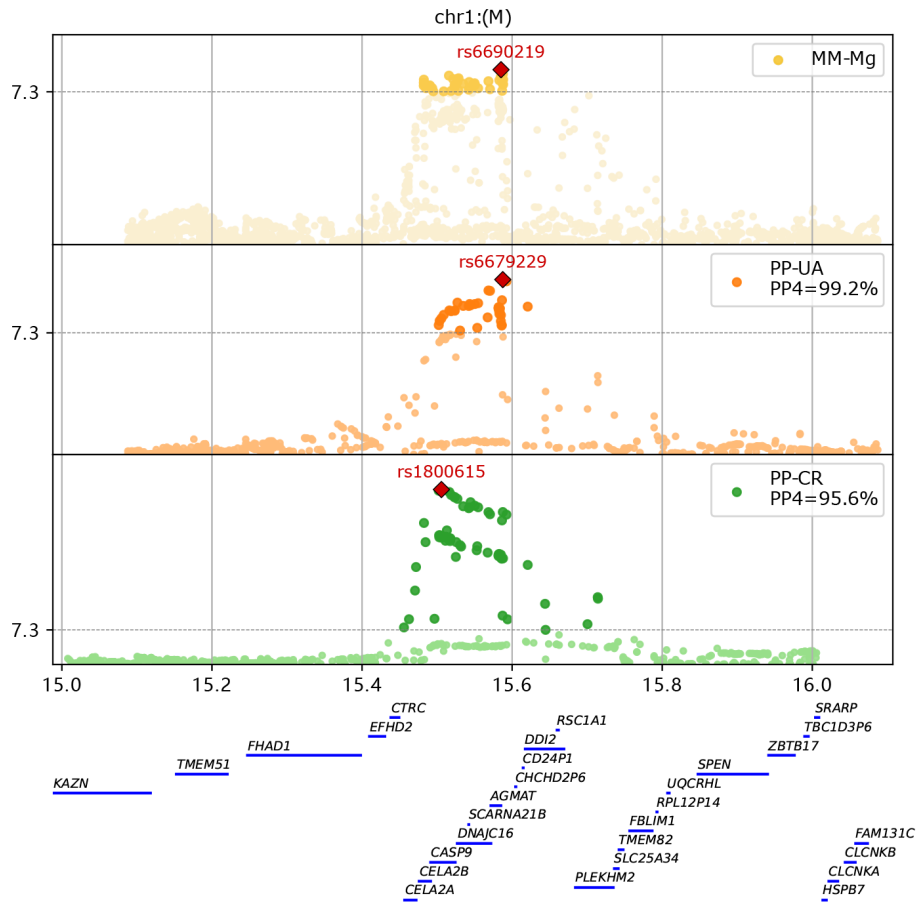
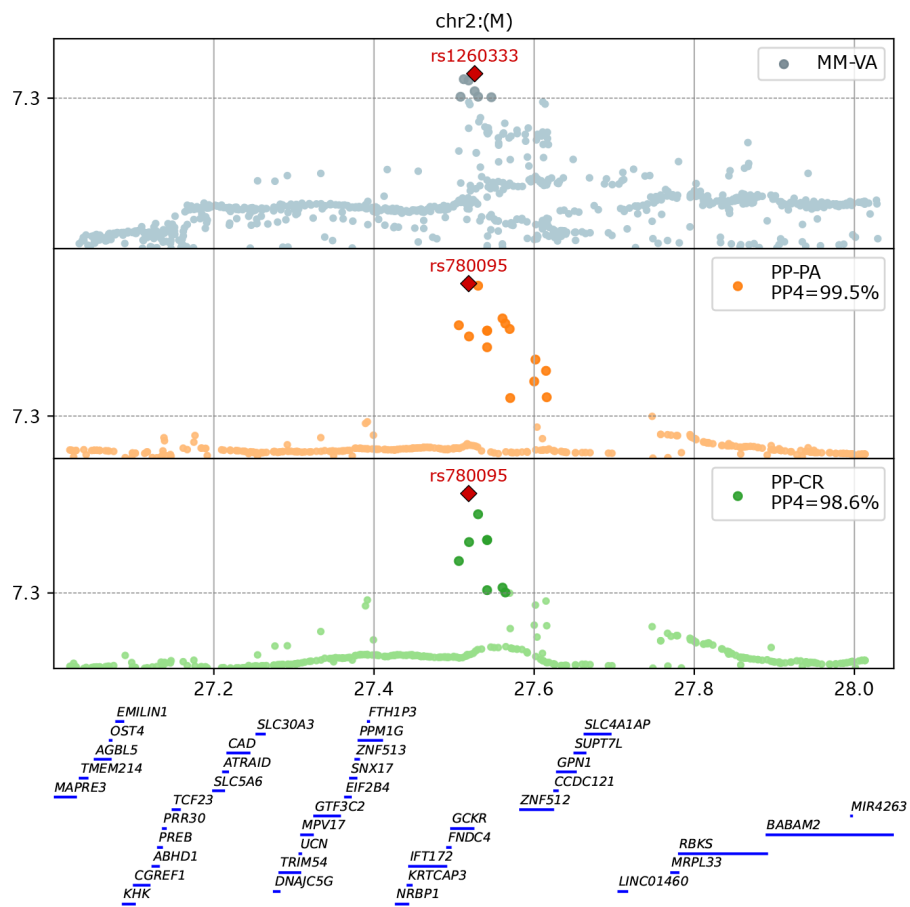


Figure S10. Forest plot for 27 loci affecting two or more metabolite molecules (p-value < 0.001)

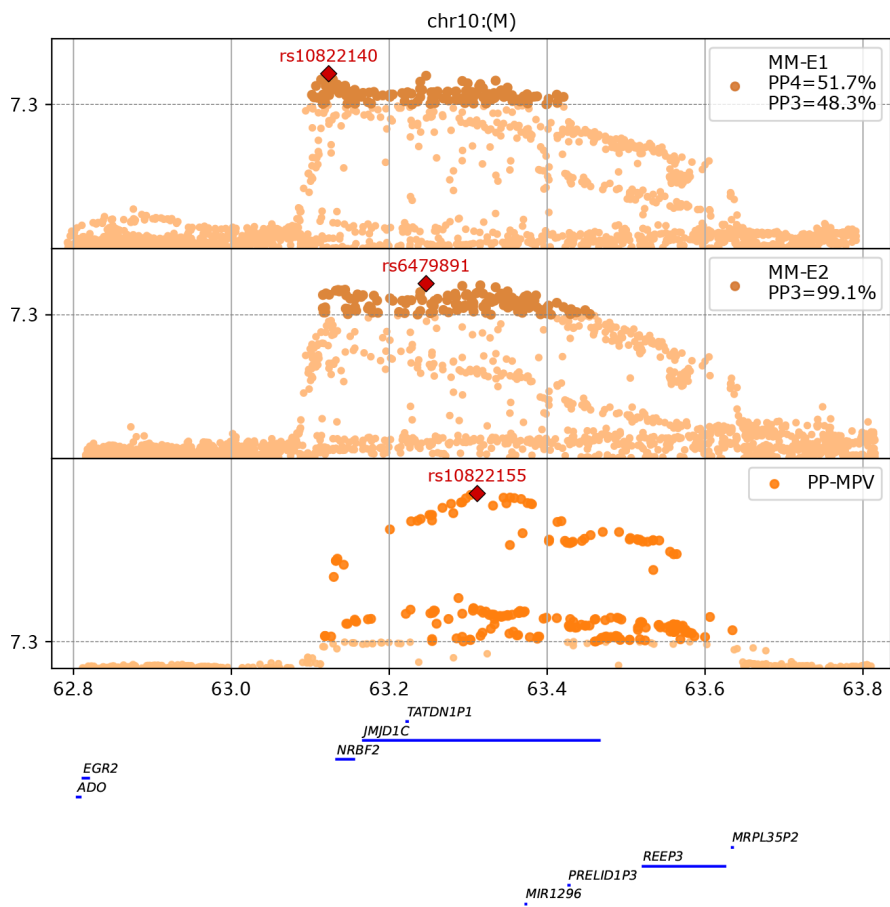
a. (MM-Mg).(PP-UA).(PP-CR)



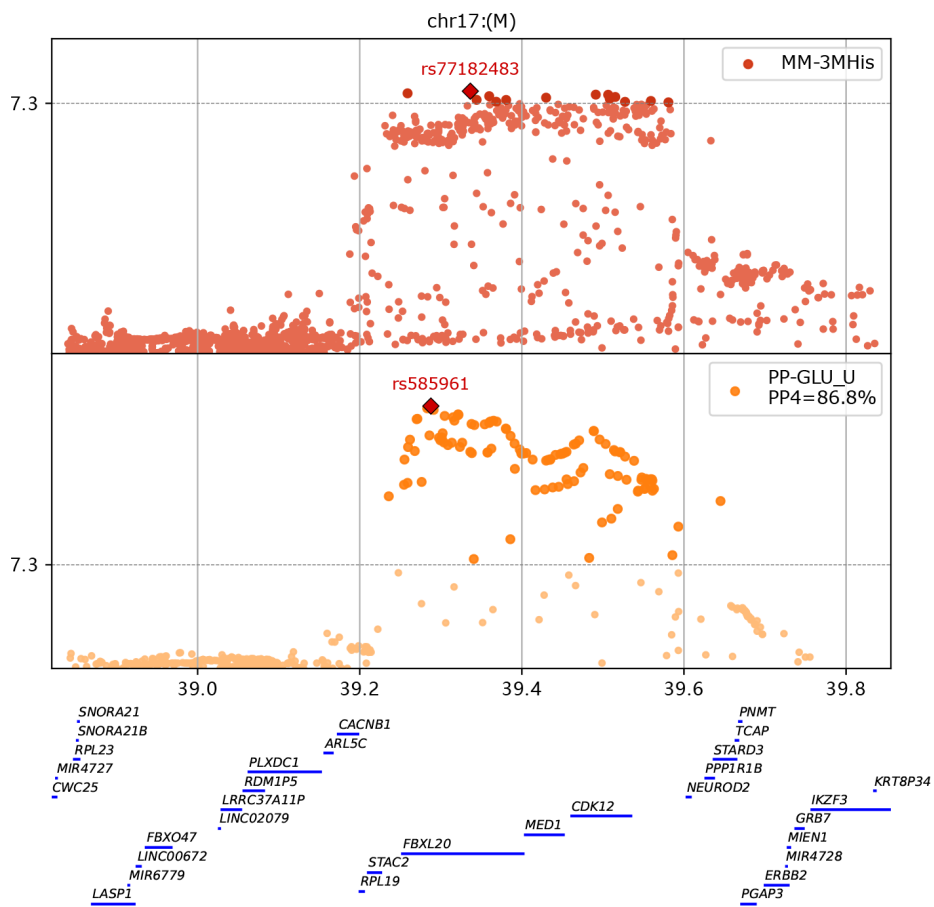
b. (MM-VA).(PP-PA).(PP-CR)



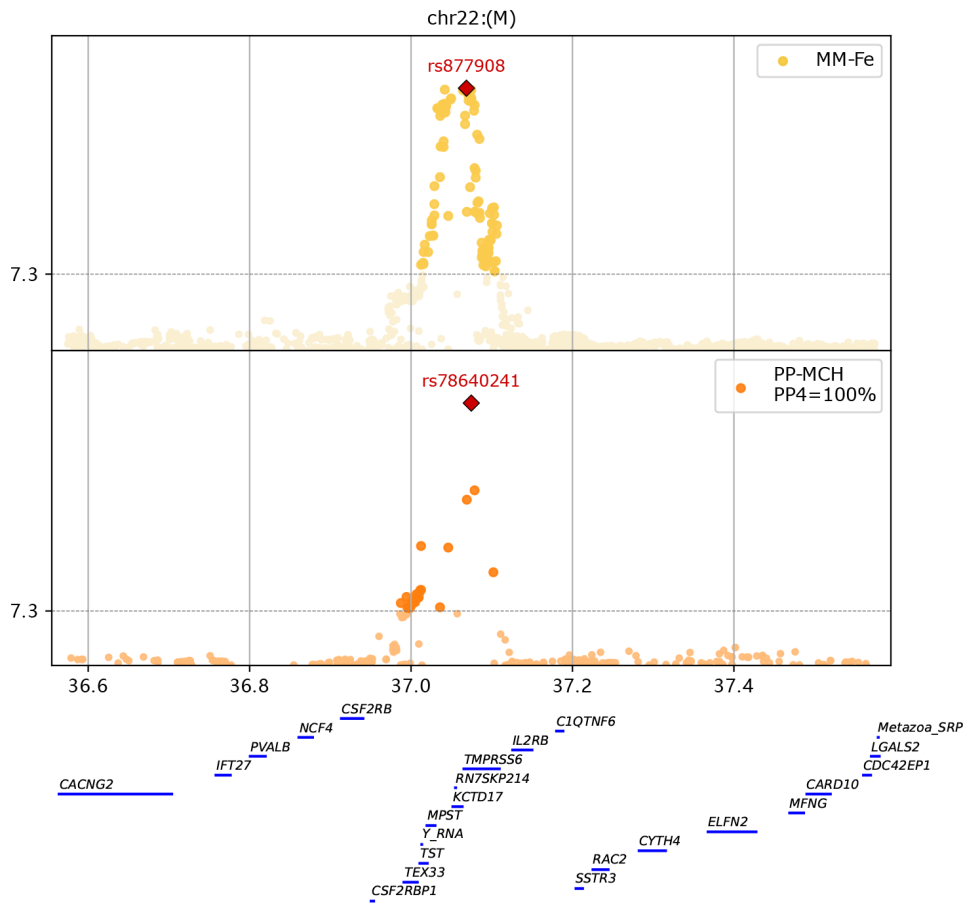
c. (MM-E1).(MM-E2).(PP-MPV)



d. (MM-3MHis). (PP-GLU_U)



e. (MM-Fe).(PP-MCH)



f. (MM-I).(PP-FT4)

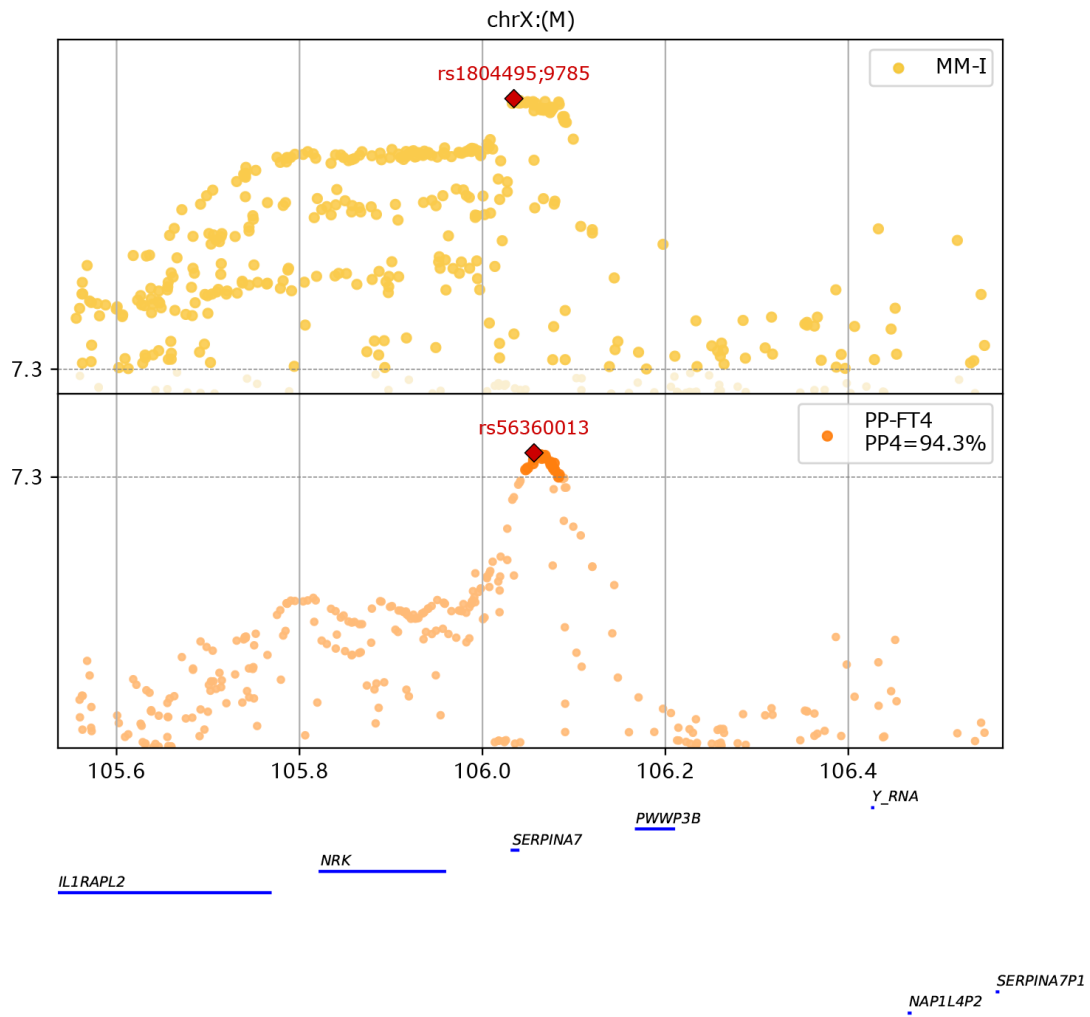


Figure S11. Colocalization analysis reveals shared causal variants between seven maternal metabolites and pregnancy phenotypes.

MM: maternal metabolites

PP: pregnancy phenotypes

Colocalization analysis was performed using the R `coloc.abf` function for the significant loci reported in this study. Pairs of phenotypes that shared posterior probabilities greater than 0.5 were considered as sharing a causal variant. P-values of multiple phenotypes were visualized with a gene annotation.