

Group	Age range	Sex	Adenoma localization	Recurrence interval	Relapse type	Tumor type
NMA1	56-60	Male	Rectum	-	-	-
NMA2	66-70	Male	Rectum	-	-	-
NMA3	76-80	Male	Rectum	-	-	-
HDA1	71-75	Male	Rectum	1 year	HG adenoma	Tubulovillous
HDA2	71-75	Male	Rectum	1 year	HG adenoma	Tubulovillous
HDA3	81-85	Male	Rectum	1 year	HG adenoma	Tubulovillous
C1	61-65	Male	Rectum	1 year	Adenocarcinoma	Tubulovillous
C2	81-85	Male	Rectum	1 year	Adenocarcinoma	Tubulovillous
C3	76-80	Male	Colon	1 year	Adenocarcinoma	Tubulovillous

Table EV1 Colorectal adenoma subcohort overview.

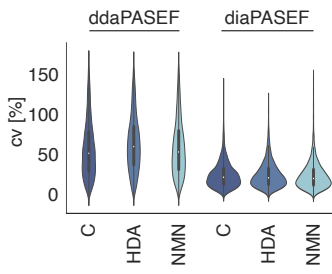
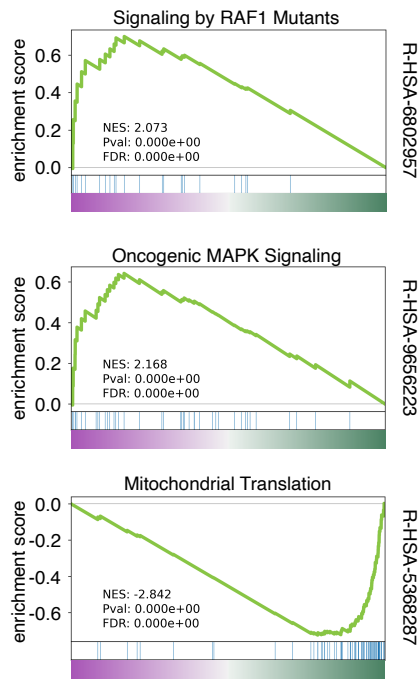
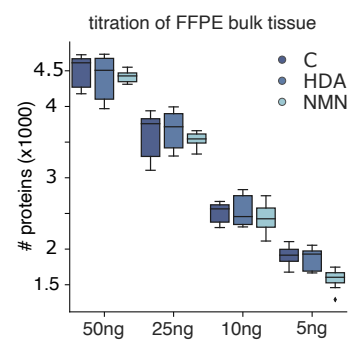
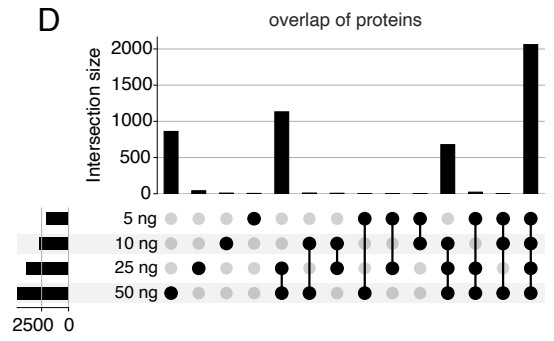
A**B****C****D**

Figure EV1 Biological and comparative analysis of DIA and DDA acquired data from bulk CRA FFPE samples.

- A. Gene Set Enrichment Analysis (GSEA) of ddaPASEF acquired data, originating from fractionated bulk FFPE tissue samples.
- B. Number of unique proteins at decreasing FFPE bulk lysate injections (50ng, 25 ng, 10 ng and 5 ng), measured in DIA and quantified by library-based DIA-NN.
- C. Overlap of proteins across different injection amounts.

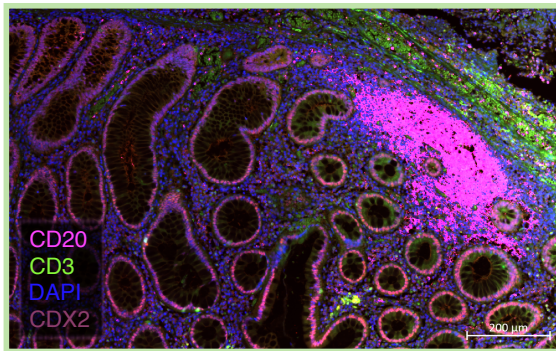
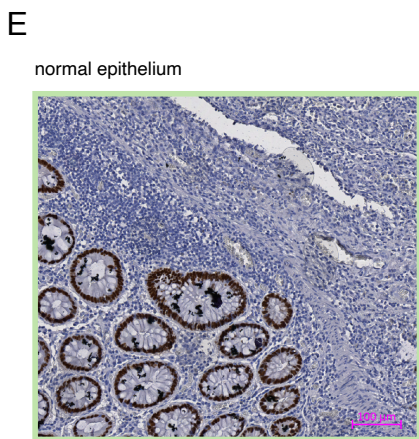
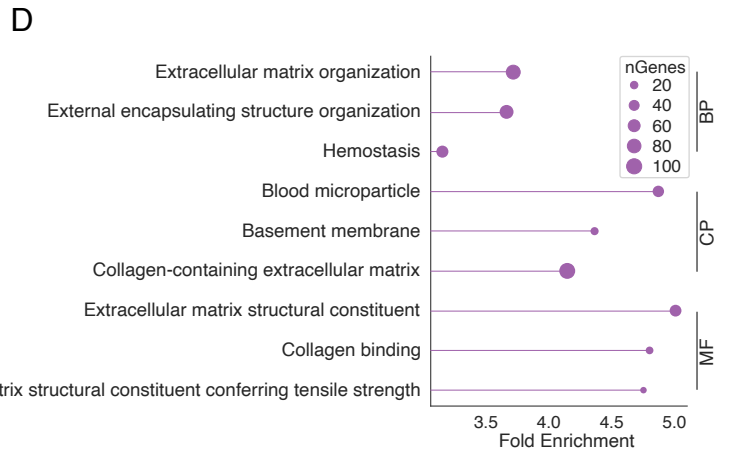
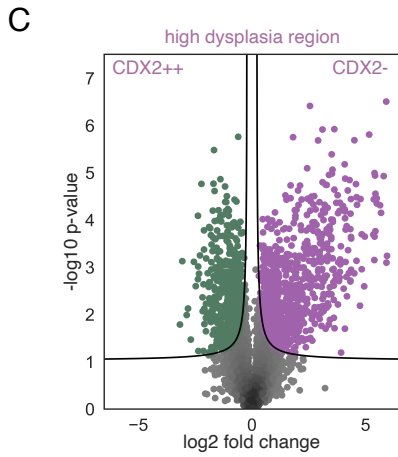
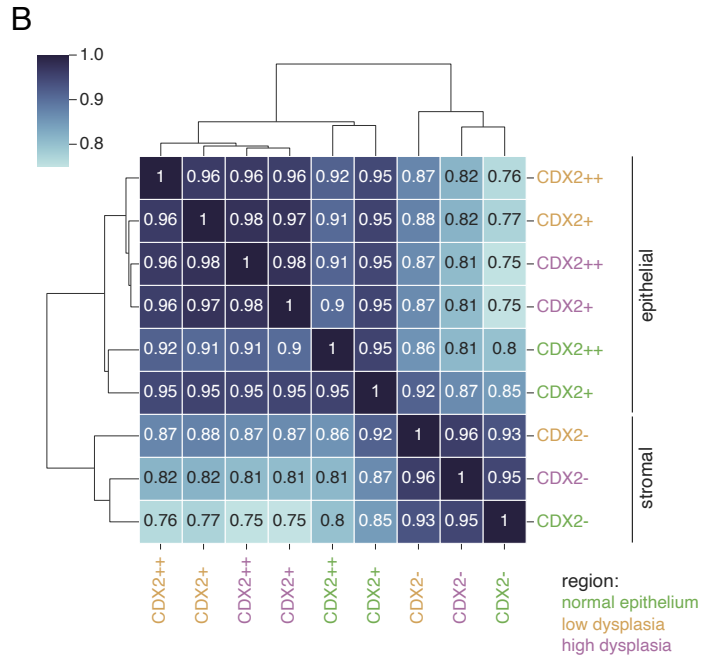
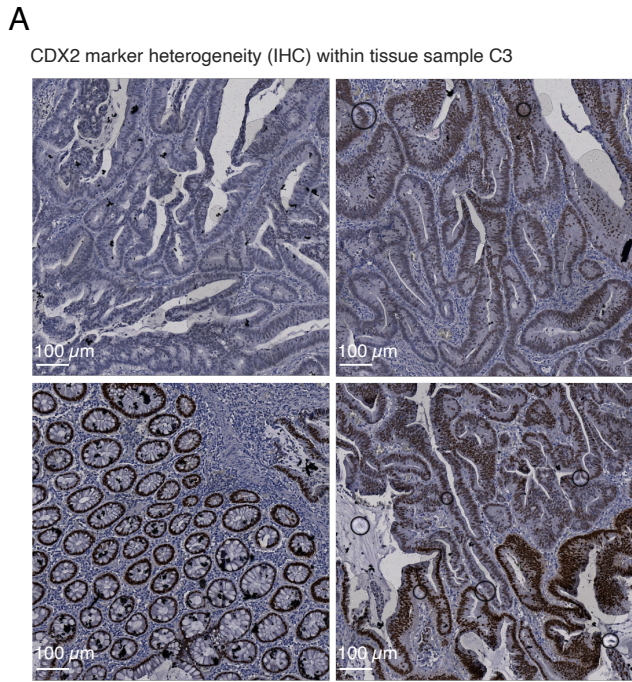


Figure EV2 Colorectal adenoma heterogeneity.

- A. IHC staining against the CDX2 marker protein of one particularly heterogenous colorectal adenoma (CRA) tissue (C3). Scale bar, 100 μm .
- B. Correlation matrix of log₂ normalized and imputed intensity values of diaPASEF-acquired low-input DVP samples.
- C. Pairwise proteomic comparison between cell classes CDX2⁺⁺ (epithelial) and CDX2⁻ (stromal), both laser microdissected from our pre-defined highly dysplastic adenoma region. Significantly enriched proteins are colored and displayed above the black lines (two-sided t-test, permutation-based FDR <0.05, $s_0 = 0.1$).
- D. GO term enrichment (FDR <0.05) of significantly positive protein hits, showing pathways included in 'Biological Process' (BP), 'Cellular Process' (CP), and 'Molecular Function' (MF).
- E. Area showing normal glandular architecture of CRA C3. Left: IHC against CDX2 and hematoxylin counterstaining. Right: Immunofluorescence staining against B lymphocytes (CD20), T lymphocytes (CD4) a nuclear staining (DAPI), and CDX2.

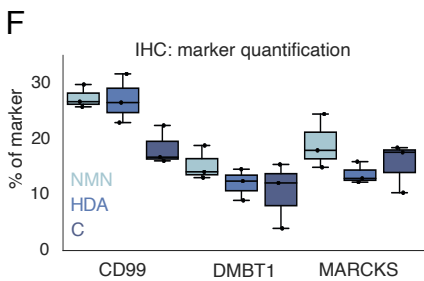
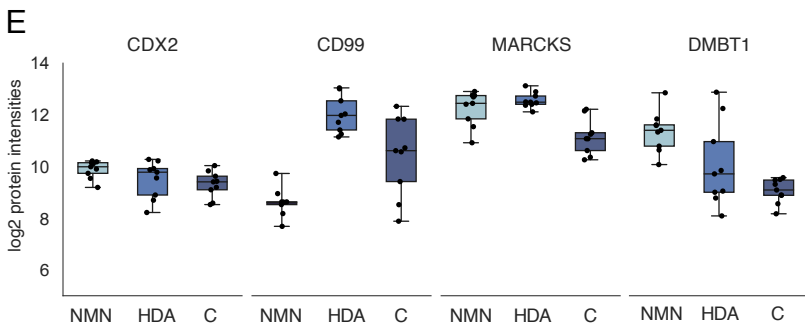
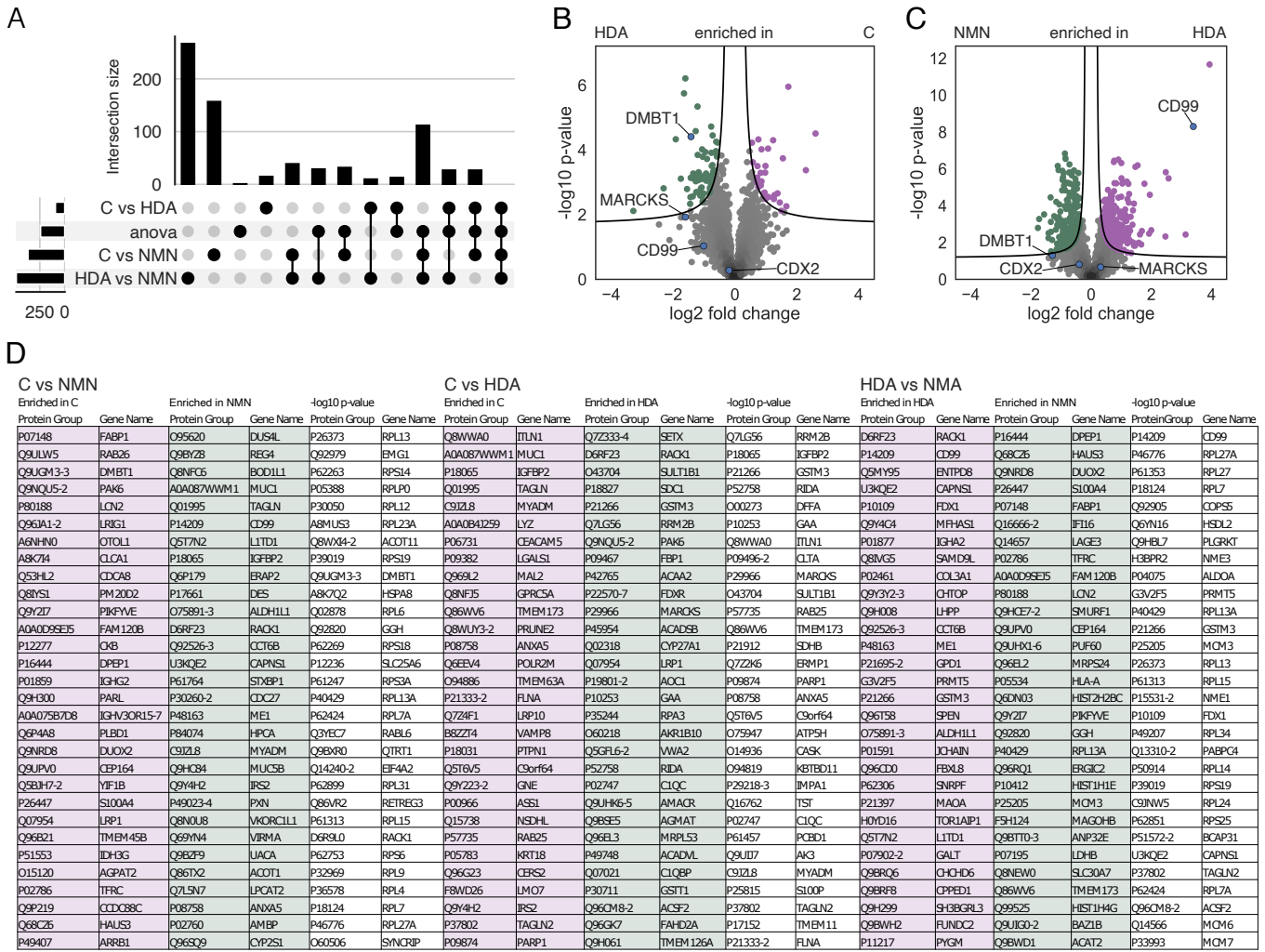


Figure EV3 Proteomic overview from singly isolated CDX2++ cells from our colorectal adenoma subcohort.

- A. Overlap of significantly enriched proteins after pairwise proteomic comparison of CDX2++ cells (two-sided t-test, permutation-based FDR <0.01, $s_0 = 0.1$) across CRA tissues.
- B, C. Pairwise proteomic comparison between group HDA and C, and NMN and HDA (two-sided t-test, permutation-based FDR <0.01, $s_0 = 0.1$).
- D. List of significantly enriched proteins between groups C, HDA and NMN after pairwise proteomic comparison (two-sided t-test, permutation-based FDR <0.01, $s_0 = 0.1$). Top 30 significantly enriched proteins are presented in a descending sequence, ordered according to their $-\log_{10}$ p-value.
- E. Log₂-transformed LFQ intensities of marker proteins CD99, DMBT1 and MARCKS.
- F. IHC signal quantification of marker proteins CD99, DMBT1 and MARCKS.