

Title Page

SARS-CoV-2 reinfection with Omicron BA.2.75 subvariants in Thai

Adults in Thailand

Suvichada Assawakosri^{1,2}, Natthinee Sudhinaraset¹, Jira Chansaenroj¹, Nungruthai

Suntronwong¹, Sitthichai Kanokudom^{1,2}, Natach Nalinpakorn¹, Napat Tantipraphat¹, Amica

Sethabutra¹, Sittisak Honsawek², Yong Poovorawan^{1,3*}

¹ Center of Excellence in Clinical Virology, Faculty of Medicine, Chulalongkorn University, Bangkok, 10330, Thailand

² Center of Excellence in Osteoarthritis and Musculoskeleton, Faculty of Medicine, Chulalongkorn University, King Chulalongkorn Memorial Hospital, Thai Red Cross Society, Bangkok, 10330, Thailand

³ FRS(T), the Royal Society of Thailand, Sanam Sueapa, Dusit, Bangkok 10330, Thailand.

*Address correspondence to

Prof. Dr. Yong Poovorawan, Center of Excellence in Clinical Virology, Department of Pediatrics, Faculty of Medicine, Chulalongkorn University. Bangkok, 10330 Thailand. E-mail: yong.p@chula.ac.th

Abstract

Omicron subvariants of SARS-CoV-2 may resist vaccine- or infection-induced immunity thereby increasing the risk of reinfections in previously infected persons. This study aimed to investigate the clinical severity and the average time to the onset of Omicron reinfection. This survey study collected clinical data on Omicron reinfection. Information on time of infection, reinfection interval, overall clinical presentation, and severity of infection was reported. The total prevalence of symptoms among 201 participants was significantly higher in the first infection (risk difference (RD), 9.86%; 95% CI, 7.54–12.19]) compared to the second infection, and the hospitalization rate among all participants was significantly lower for the second infection than the primary infection (odds ratio (OR), 6.25; 95% CI, 2.158–24.71). The prevalence of symptoms compared with the first infection with pre-Omicron variants was similar to that of the first infection with the Omicron variant (RD, 2.56%; 95% CI, -6.14–1.01). However, the hospitalization rate for pre-Omicron primary infection was significantly higher (OR, 6.76; 95% CI, 2.87–15.87]) than that observed with Omicron variants. The severity of the primary infection and of a pre-Omicron variant was greater than that of a secondary infection or with an Omicron variant.

Keywords: COVID-19; SARS-CoV-2; reinfection; omicron variant; clinical severity.

1 **Introduction**

2 In March 2020 the World Health Organization (WHO) declared Coronavirus disease
3 (COVID-19) a worldwide pandemic. Since then, there have been over 676 million cases and 6.8
4 million deaths worldwide. As of January 2023, more than 4.7 million cases and 33 thousand
5 deaths have been reported in Thailand. In the current pandemic stage, new SARS-CoV-2
6 Omicron variants with a high ability to escape vaccine- and infection-induced immunity have
7 raised the concern of potential reinfection among previously infected individuals.

8 In August 2020, the first reinfection case of COVID-19 was documented in Hong Kong
9 [1]. Reinfection of COVID-19 is defined as a person infected with a genetically different variant
10 from the previous infection or probable reinfection after a more than 90-day interval between
11 two infections [2]. Previous studies have demonstrated that the rate of reinfection with COVID-
12 19 increased from <2.7 % to 11% after the Omicron wave started [3]. Symptoms can range from
13 asymptomatic to severe illness due to Omicron infection. However, most patients recovered
14 within a few weeks after infection.

15 Infected individuals may experience lower levels of severity on the second episode of
16 infection during the transition between Delta and the Omicron wave [4]. However, there are
17 limited data on the severity of the disease in individuals with repeated infections with the
18 Omicron variant, especially infections with BA.4/5 or BA.2.75. This study aimed to investigate
19 clinical data on the severity disease following reinfection during the Omicron wave in the Thai
20 population.

21 **Methods**

22 **Study design**

23 This study was a survey study. The study protocol was approved by the Institutional Review
24 Board of the Faculty of Medicine of Chulalongkorn University (IRB numbers 750/65). The study
25 was conducted in accordance with the principles of the Declaration of Helsinki and the Good
26 Clinical Practice Guidelines (ICH-GCP). Informed consent was obtained electronically from all
27 participants before the survey started.

28 **Study participants**

29 In January 2023, subjects participated in this electronic survey study to report COVID-19
30 symptoms. Data, including participant characteristics such as sex, age, comorbidity, occupation,
31 COVID-19 vaccination history, and infection history were obtained from all participants. The
32 inclusion criteria were Thai adults aged over 18 years with a history of two COVID-19
33 infections. The time interval between two episodes of infection was >90 days. Participants with
34 incomplete infection data, who were not immunocompetent, who were receiving
35 immunosuppressive drugs, and participants who were pregnant or breastfeeding were excluded
36 from the study. The timing of the infection was used to assign the pre-Omicron or Omicron
37 infection period. According to the sequenced surveillance data for the predominant SARS-CoV-2
38 variant obtained in our previous study in Thailand [5], infections that occurred before January
39 2022 were considered from the pre-Omicron infection period.

40 **Statistical analysis**

41 All analyses were performed using the Statistical Package for the Social Sciences (SPSS) v.29
42 (SPSS Inc., Chicago, IL, USA). Comparison of categorical data, including sex and
43 comorbidities, was performed using Pearson's chi-square test. The Mann–Whitney U test was

44 used to compare between groups (nonparametric analysis). The general risk difference (RD) and
45 95% confidence intervals (CI) of acute symptomatic infections were estimated. Figures were
46 generated using GraphPad Prism v9.0 (GraphPad Software, San Diego, CA, USA) and RStudio
47 with R statistical software version 4.2.0 (R Project for Statistical Computing).

48 **RESULTS**

49 **Demographic data**

50 In January 2023, a total of 201 adults were enrolled in this survey study. All participants were
51 Thai adults, could be divided into two groups: 169 non-healthcare workers (non-HCW) and 32
52 healthcare workers (HCW). The majority of the participants were female, comprising 120
53 (59.7%) of the 201 participants. The overall mean age was 44.3 [20–81] years, while the mean
54 age (range) in the non-HCW and HCW groups was 45.1 [20–81] and 39.9 [23–66] years,
55 respectively. For the vaccination profile, the participants who received two, three, four or more
56 doses of the COVID-19 vaccine were combined. Most participants completed at least two
57 primary doses (99.0%) and one booster dose (89.5%). Generally, there are no significant
58 differences in the baseline characteristics, including sex, age, common underlying disease, or the
59 timing of infection between the two groups. The general demographics are shown in Table 1.

60 **Timing of infection and reinfection interval**

61 All participants were subdivided into two groups according to the timing of the first infection.
62 The first infections ranged from January 2021 to October 2022: 65 infections were reported
63 during the pre-Omicron wave (32.3%) and 136 infections were reported during the predominant
64 Omicron wave (67.7%). Reinfections peaked during the Omicron BA.4/5 and BA.2.75
65 predominant wave, as shown in Fig. 1. The average time interval between the first infection
66 (circle) and the reinfection (square) was 262.8 [range 96-725] days. For most participants

67 139/201 (69.2%), the reinfection interval time was greater than 180 days since the primary
68 infection.

69 **Overall clinical presentation and the severity of infection**

70 The prevalence and severity of acute symptoms of the first and second infections were reported.
71 The most common symptoms during the first infection were cough (76.6%), sore throat (73.6%),
72 and runny nose (73.1%), respectively. In comparison, common symptoms during the second
73 episode were runny nose (75.6%), cough (73.6%), and sore throat (64.2%), respectively. Most of
74 the clinical symptoms were presented as mild to moderate in severity. The percentage of severe
75 symptoms was less observed in the second infection compared to the primary exposure to
76 COVID-19 (Supplementary Fig. 1). Statistical analysis showed that the total prevalence of
77 symptoms was significantly higher in the first infection (RD, 9.86% [95% CI; 7.54-12.19]) than
78 in the second infection, as shown in Fig. 2A. However, no significant differences were observed
79 in some common acute symptoms, including runny nose, cough, sputum production, headache,
80 hoarseness, and rash. In summary, these acute symptoms were a common signature clinical
81 symptom of SARS-CoV-2 infection. Overall, the hospitalization rate among all participants was
82 significantly lower for the second infection compared to the primary infection (OR, 6.25 [95%
83 CI, 2.158–24.71]) (Table 2).

84 **Comparison of the clinical presentation of pre-Omicron and Omicron variant infections.**

85 We compared the clinical characteristics between the first infection with those of the different
86 variants and between the two episodes of infection. First, the total prevalence of symptoms
87 between the first infection with the pre-Omicron variants was not significantly different from the
88 first infection with the Omicron variant (RD 2.56% [95% CI; -6.14 to 1.01]) as shown in Fig. 2B.
89 However, the hospitalization rate of the primary infection with pre-Omicron variants was

90 significantly higher (OR, 6.76 [95% CI, 2.87–15.87]) than that observed on infection with
91 Omicron variants (Table 2). Anosmia was significantly higher (RD, 29.7% [95% CI; 15.5–43.9])
92 in patients with pre-Omicron infection than in the Omicron infection group. At the same time,
93 symptoms of sore throat were significantly higher observed in patients with Omicron infection
94 (RD, 22.4% [95% CI; 8.7, 36.1]).

95 Comparing the two infection episodes, the group with the first infection with the pre-Omicron
96 variant showed a significantly higher prevalence of lower respiratory symptoms and other
97 systemic symptoms such as anosmia, dyspnea, pneumonia, chest pain, anxiety, myalgia, fatigue,
98 and GI symptoms than that observed on reinfection with the Omicron variant (Fig. 3C). Instead,
99 the group with Omicron primary infection presented a significantly higher prevalence of local
100 upper respiratory symptoms than the repeated Omicron episode, including sore throat, sputum,
101 anosmia, and some other systemic symptoms such as fever, dyspnea, anxiety, myalgia, and
102 fatigue (Fig. 3D). These results suggested that the first infection likely caused more severe
103 disease conditions than the second infection.

104 **Discussion**

105 Following the emergence of several Omicron subvariants, including BA.1, BA.1.1, BA.2,
106 BA.2.12.1, BA.2.75, and BA.4/5, COVID-19 reinfection has increased dramatically worldwide.
107 Due to the waning of antibodies over time after vaccination or natural infection [6] and given the
108 large number of spike mutations harbored by the Omicron variant, patients who were previously
109 infected pre-Omicron variants experienced a second breakthrough infection on exposure to
110 different Omicron subvariants of SARS-CoV-2 [7]. A previous study revealed that the titer of
111 neutralizing antibodies (NAbs) from the Delta-infected serums was significantly lower against
112 the Omicron variant than that of against the Wild-type or Delta variant [8].

113 Additionally, the accumulation of mutations in spike-RBD among newly emerged Omicron
114 subvariants often contributes to repeated Omicron breakthrough infections [9]. A significant
115 increase in the rate of reinfection in patients with primary Omicron infection (BA.1 or BA.2)
116 after exposure to BA.4 and BA.5 were dominant variants in Qatar [10]. Our study showed that
117 the reinfection events mainly occurred during the introduction of Omicron BA.4/5 and BA.2.75
118 subvariants in Thailand. Although 70% of the study population had experienced an Omicron
119 primary infection with BA.1 or BA.2, they had repeated Omicron breakthrough infections. Thus,
120 our data demonstrated that the new Omicron subvariant, especially Omicron BA.2.75, could be
121 associated with a higher risk of reinfection among individuals with hybrid immunity.

122 This study also compared the prevalence of the clinical characteristics and disease features of the
123 two-infection episodes and the reinfection time interval. Our findings showed that the average
124 time to the onset of reinfections was 262 days among all participants. In agreement with a
125 previous study, almost 80% to 90% of immunological memory (both CD4 T cell and B cell
126 memory) of SARS-CoV-2 persisted for 6 to 8 months after primary recovery [11]. Compared to
127 another study from Brazil, our finding showed there was a shorter estimated time interval
128 between two infections (approximately 8- vs. 14-month interval) [12]. Even though protection
129 against reinfection may decrease over time after primary infection, protection against severe
130 symptoms after reinfection was maintained at more than 90% for patients with Omicron
131 infection [13]. Our finding revealed that the prevalence of acute symptoms, the severity of the
132 disease, and the hospitalization rate were significantly lower in the Omicron reinfection episode
133 compared to the primary episode. In support to our results, Sotoodeh et al. also reported that
134 most reinfected cases presented the clinical symptom as asymptomatic or with mild symptoms
135 [14].

136 Moreover, our study demonstrated that the hospitalization rate in the Omicron primary infection
137 group was significantly lower compared to primary infection with the pre-Omicron variant.
138 Similar to recent studies, the clinical symptoms of Omicron infection were substantially less
139 severe than those of all other variants of SARS-CoV-2 [15, 16]. According to *ex vivo* evidence,
140 the extensive mutation in the spike protein of Omicron altered its replication properties. Since
141 the Omicron variant is highly replicated and accumulates in the upper respiratory tract, it has a
142 lower replication competence in the human lungs [17]. This finding may explain why the
143 Omicron variant does not cause severe lower respiratory symptoms. Another reason for the
144 attenuated symptoms on reinfection might be the level of coverage of vaccination among our
145 study population, since several studies have shown that protection against severe infection was
146 significantly higher in those who completed a booster dose of the COVID-19 mRNA vaccine
147 than in unvaccinated individuals [18].

148 The primary limitation of our study was the lack of confirmed sequencing analysis of SARS-
149 CoV-2 variants for all participants; thus, we can only attribute the variant strain responsible for
150 infection by relying on the time of infection. Furthermore, a subgroup analyses that stratifies
151 patients by age or vaccination status could not be performed due to the small number of
152 participants. Further study with a larger sample size of participants or the study of estimates rate
153 of SARS-CoV-2 reinfections in the Thai population will contribute to future policy decisions on
154 preventive vaccination strategies.

155 In summary, our study found that the clinical characteristics of repeated Omicron infections were
156 less severe than those of the primary infection. The estimated interval between the primary and
157 reinfection episode was approximately 8 to 9 months after the primary infection. Furthermore,

158 the viremic effect of the primary Omicron variants was lower than that of infection with the pre-
159 Omicron variant.

160 **Conflicts of Interest:** The authors declare no conflict of interest.

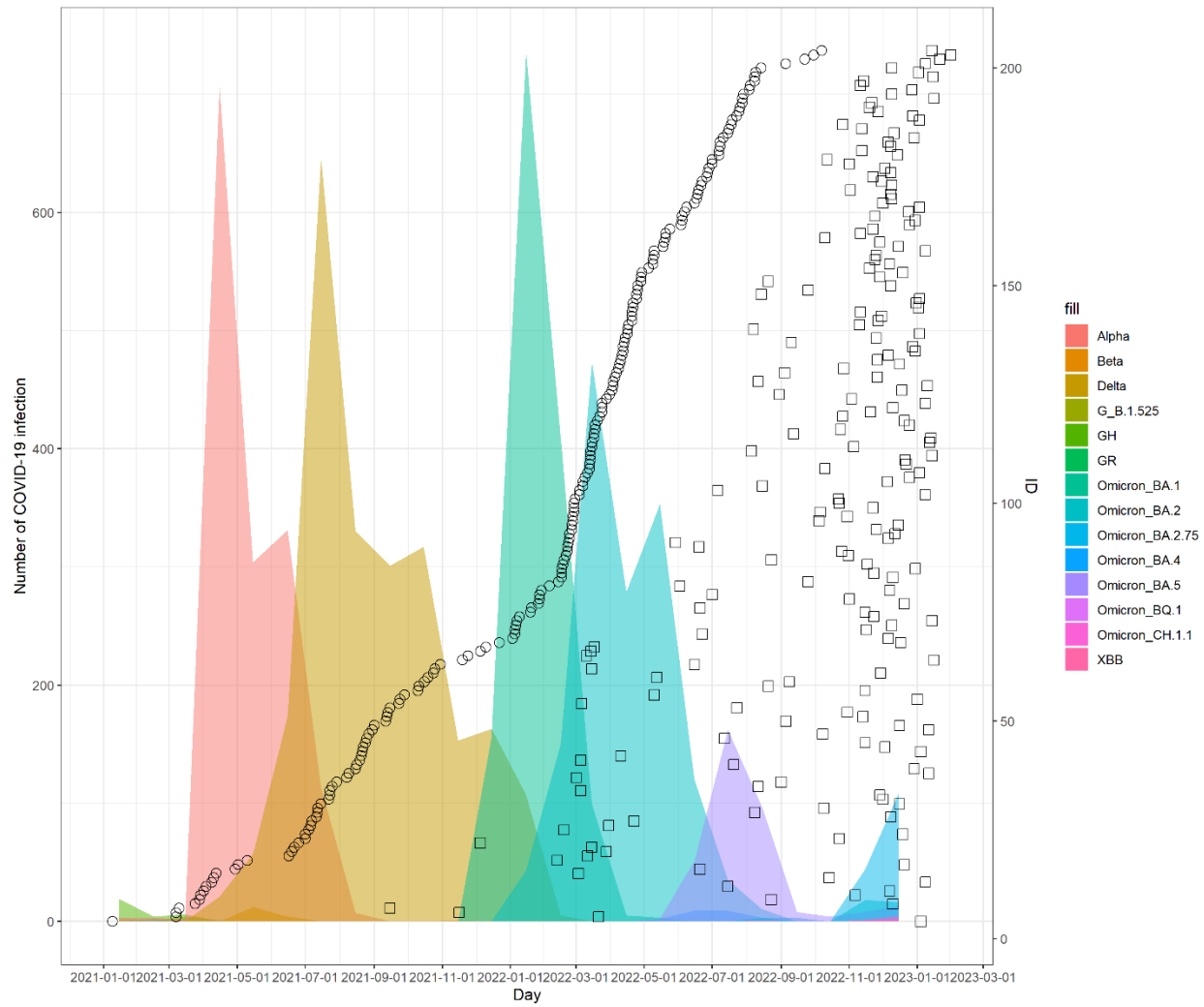
161 **Funding Statement:** This work was supported by the Health Systems Research Institute (HSRI);
162 the National Research Council of Thailand (NRCT); the Center of Excellence in Clinical
163 Virology, Chulalongkorn University; and King Chulalongkorn Memorial Hospital; and the
164 Second Century Fund (C2F), Chulalongkorn University.

165 **Ethical approval and consent to participate:** The study protocol was approved by the
166 Institutional Review Board of the Faculty of Medicine of Chulalongkorn University (IRB
167 numbers 750/65). Electronic informed consent was obtained from all participants before the
168 survey started.

169 **Author Contributions:** Conceptualization, S.A., N.S. and Y.P.; data curation, S.A., N.S. and
170 D.S.; formal analysis, S.A., J.C., N.S. (Nungruthai Suntronwong); methodology, S.A., P.N.,
171 N.N., N.T., A.S.; project administration, N.S., S.H. and Y.P.; writing—original draft, S.A.;
172 writing—review and editing, J.C., N.S. (Nungruthai Suntronwong), S.K., and Y.P. All authors
173 have read and agreed to publish this version of the manuscript.

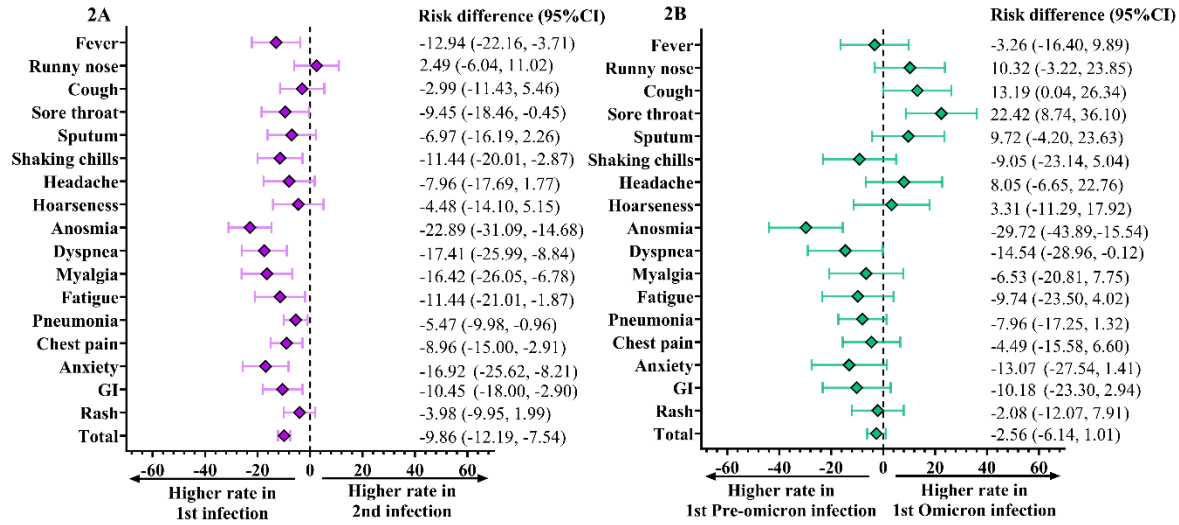
174 **Acknowledgments:** The authors are grateful to the Center of Excellence in Clinical Virology
175 staff, all the participants, BJC Big C Foundation and MK restaurant group public Co., Ltd. for
176 helping and supporting this project.

177 **Figures**



178

179 **Fig. 1. Timeline of COVID-19 reinfection cases.** Time course of the first infection (circle) and
180 reinfection (square) were plotted versus the sequencing data of the SARS-CoV-2 predominant
181 variant obtained in our previous study [5].



182

183 **Fig. 2. Comparison of the prevalence of acute clinical symptoms.**

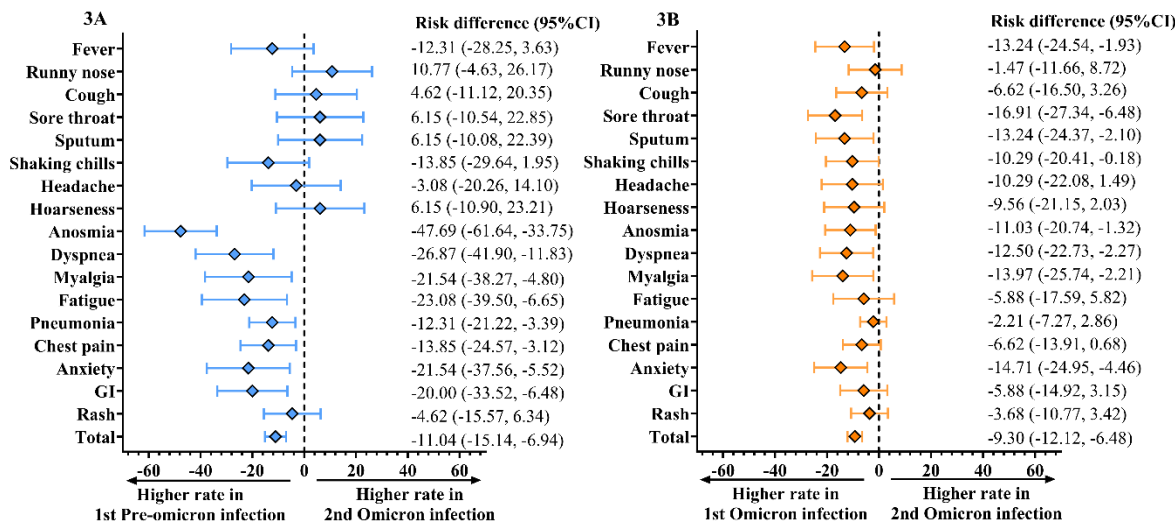
184 The Forest plot presents the prevalence of any grade of clinical symptom and the comparison of

185 absolute risk differences between two infections (A) between the first and second infection; (B)

186 between the first infection with a pre-Omicron variant and first infection with an Omicron

187 variant.

188



189

190 **Fig. 3. Comparison of the prevalence of acute clinical symptoms in different primary**
 191 **infection strain.**

192 The Forest plot presents the prevalence of any grade of clinical symptom and the comparison of
 193 absolute risk differences between two infections (A) between the first infection with a pre-
 194 Omicron variant and second infection with Omicron variant; and (B) compared between the first
 195 infection with an Omicron variant and second infection with Omicron variant.

196 **Table 1.** Demographics and baseline characteristics of the enrolled participants Abbreviations:

197 HCW: Health care worker; Non-HCW: non-Health care worker; NA: Not-available; COPD:

198 Chronic obstructive pulmonary disease.

	Total	Non-HCW	HCW
Total number (n)	201	169	32
Mean age (range) years	44.3 (20–81)	45.1 (20–81)	39.9 (23–66)
Sex			
Male (%)	78 (38.8)	70 (41.4)	8 (25.0)
Female (%)	120 (59.7)	97 (57.4)	23 (71.9)
NA (%)	3 (1.5)	2 (1.2)	1 (3.1)
Underlying disease (%)			
Hypertension	30 (14.9)	25 (14.8)	5 (15.6)
Diabetes Mellitus	11 (5.5)	10 (5.9)	1 (3.1)
Cardiovascular diseases	5 (2.5)	5 (3.0)	-
Obesity	7 (3.5)	7 (4.1)	-
Dyslipidemia	28 (13.9)	23 (13.6)	5 (15.6)
Allergy	25 (12.4)	20 (11.8)	5 (15.6)
Asthma	3 (1.5)	3 (1.8)	-
Thyroid	5 (2.5)	4 (2.4)	1 (3.1)
Cancer	1 (0.5)	1 (0.6)	-
Other (gout, COPD, etc.)	13 (6.5)	12 (7.1)	1 (3.1)
Interval between two infections, (range) days	262.8 (96–725)	263.0 (96–640)	261.3 (99–725)
Interval between two infections group			
0–180 days (%)	62 (30.8)	52 (30.8)	10 (31.3)
> 180 days (%)	139 (69.2)	117 (69.2)	22 (68.7)
Time of the first infection (%)			
Pre-Omicron	65 (32.3)	55 (32.5)	10 (31.3)
Omicron	136 (67.7)	114 (67.5)	22 (68.7)
Vaccine Dose (%)			
0	1 (0.5)	2 (0.6)	-
1	1 (0.5)	1 (0.6)	-
2	19 (9.5)	19 (11.2)	-
3	68 (33.8)	65 (37.9)	4 (12.5)
4	82 (40.8)	62 (36.7)	20 (62.5)
5	28 (13.9)	21 (12.4)	7 (21.9)
≥ 6	2 (1.0)	1 (0.6)	1 (3.1)

199

200 **Table 2. An event of hospitalization compared between two episodes of infection and**
201 **between variants of primary infection.**

202

Hospitalization rate	N	OR (95%CI)	p-value
Between episodes of infection			
Primary infection	30 (14.9%)	6.25 (2.158 –24.71)	<0.001 ^a
Reinfection	7 (3.5%)	Ref	
Between variants of infection			
Pre-Omicron	21 (32.3%)	6.76 (2.87-15.87)	<0.001 ^b
Omicron	9 (6.6%)	Ref	

^a odd ratio (OR) was calculated based on pair samples and statistical analysis was performed using the McNemar's test.

^b odd ratio (OR) was calculated based on independent samples by using the chi-square test

203 **Reference list**

- 204 [1] Parry J. Covid-19: Hong Kong scientists report first confirmed case of reinfection. *Bmj*.
205 2020;370:3340. doi: 10.1136/bmj.m3340.
- 206 [2] Akinbami LJ, Biggerstaff BJ, Chan PA, McGibbon E, Pathela P, Petersen LR. Reinfection
207 With Severe Acute Respiratory Syndrome Coronavirus 2 Among Previously Infected Healthcare
208 Personnel and First Responders. *Clin Infect Dis*. 2022;75(1):e201-7. doi: 10.1093/cid/ciab952.
- 209 [3] Ruff J, Zhang Y, Kappel M, Rathi S, Watkins K, Zhang L, et al. Rapid Increase in Suspected
210 SARS-CoV-2 Reinfections, Clark County, Nevada, USA, December 2021. *Emerg Infect Dis*.
211 2022;28(10):1977-81. doi: 10.3201/eid2810.221045.
- 212 [4] Mensah AA, Lacy J, Stowe J, Seghezzi G, Sachdeva R, Simmons R, et al. Disease severity
213 during SARS-COV-2 reinfection: a nationwide study. *J Infect*. 2022;84(4):542-50. doi:
214 10.1016/j.jinf.2022.01.012.
- 215 [5] Puenpa J, Rattanakomol P, Saengdao N, Chansaenroj J, Yorsaeng R, Suwannakarn K, et al.
216 Molecular characterisation and tracking of severe acute respiratory syndrome coronavirus 2 in
217 Thailand, 2020-2022. *Arch Virol*. 2023;168(1):26. doi: 10.1007/s00705-022-05666-6.
- 218 [6] Goldberg Y, Mandel M, Bar-On YM, Bodenheimer O, Freedman LS, Ash N, et al. Protection
219 and Waning of Natural and Hybrid Immunity to SARS-CoV-2. *N Engl J Med*.
220 2022;386(23):2201-12. doi: 10.1056/NEJMoa2118946.
- 221 [7] Samanta A, Alam SSM, Ali S, Hoque M. Analyzing the interaction of human ACE2 and
222 RBD of spike protein of SARS-CoV-2 in perspective of Omicron variant. *EXCLI J*.
223 2022;21:610-20. doi: 10.17179/excli2022-4721.

- 224 [8] Yamamoto S, Matsuda K, Maeda K, Oshiro Y, Inamura N, Mizoue T, et al. Omicron BA.1
225 neutralizing antibody response following Delta breakthrough infection compared with booster
226 vaccination of BNT162b2. *BMC Infect Dis.* 2023;23(1):282. doi: 10.1186/s12879-023-08272-2.
- 227 [9] Huo J, Dijokaite-Guraliuc A, Liu C, Zhou D, Ginn HM, Das R, et al. A delicate balance
228 between antibody evasion and ACE2 affinity for Omicron BA. 2.75. *Cell Rep.*
229 2023;42(1):111903.
- 230 [10] Chemaitelly H, Ayoub HH, Tang P, Hasan MR, Coyle P, Yassine HM, et al. Immune
231 Imprinting and Protection against Repeat Reinfection with SARS-CoV-2. *N Engl J Med.*
232 2022;387(18):1716-8. doi: 10.1056/NEJMc2211055.
- 233 [11] Chivese T, Matizanadzo JT, Musa OAH, Hindy G, Furuya-Kanamori L, Islam N, et al. The
234 prevalence of adaptive immunity to COVID-19 and reinfection after recovery - a comprehensive
235 systematic review and meta-analysis. *Pathog Glob Health.* 2022;116(5):269-81. doi:
236 10.1080/20477724.2022.2029301.
- 237 [12] Guedes AR, Oliveira MS, Tavares BM, Luna-Muschi A, Lazari CDS, Montal AC, et al.
238 Reinfection rate in a cohort of healthcare workers over 2 years of the COVID-19 pandemic. *Sci*
239 *Rep.* 2023;13(1):712. doi: 10.1038/s41598-022-25908-6
- 240 [13] Stein C, Nassereldine H, Sorensen RJ, Amlag JO, Bisignano C, Byrne S, et al. Past SARS-
241 CoV-2 infection protection against re-infection: a systematic review and meta-analysis. *Lancet.*
242 2023;401(10379):833-42. Doi: 10.1016/S0140-6736(22)02465-5
- 243 [14] Sotoodeh Ghorbani S, Taherpour N, Bayat S, Ghajari H, Mohseni P, Hashemi Nazari SS.
244 Epidemiologic characteristics of cases with reinfection, recurrence, and hospital readmission due
245 to COVID-19: A systematic review and meta-analysis. *J med virol.* 2022;94(1):44-53. doi:
246 10.1002/jmv.27281

- 247 [15] Zhang J, Chen N, Zhao D, Zhang J, Hu Z, Tao Z. Clinical Characteristics of COVID-19
248 Patients Infected by the Omicron Variant of SARS-CoV-2. *Front Med (Lausanne)*.
249 2022;9:912367. doi: 10.3389/fmed.2022.912367.
- 250 [16] Esper FP, Adhikari TM, Tu ZJ, Cheng YW, El-Haddad K, Farkas DH, et al. Alpha to
251 Omicron: Disease Severity and Clinical Outcomes of Major SARS-CoV-2 Variants. *J Infect Dis*.
252 2023;227(3):344-52. doi: 10.1093/infdis/jiac411.
- 253 [17] Hui KPY, Ho JCW, Cheung MC, Ng KC, Ching RHH, Lai KL, et al. SARS-CoV-2
254 Omicron variant replication in human bronchus and lung ex vivo. *Nature*. 2022;603(7902):715-
255 20. doi: 10.1038/s41586-022-04479-6.
- 256 [18] Flacco ME, Acuti Martellucci C, Baccolini V, De Vito C, Renzi E, Villari P, et al. COVID-
257 19 vaccines reduce the risk of SARS-CoV-2 reinfection and hospitalization: Meta-analysis. *Front*
258 *Med (Lausanne)*. 2022;9:1023507. doi: 10.3389/fmed.2022.1023507.