

1 **A distinct T cell receptor signature associates with cardiac outcome in myocardial**
2 **infarction patients**

3 Kenz Le Gouge*¹, DiyaaEIDin Ashour**^{2,3}, Margarete Heinrichs**^{2,3}, Paul Stys**¹, Pierre
4 Barennes**¹, Verena Stangl⁴, Lavinia Rech⁵, Gerald Hoefler⁴, Karl Kashofer⁴, Tobias
5 Gassenmaier⁶, Valerie Boivin-Jahns⁷, Roland Jahns⁸, Ulrich Hofmann^{2,3}, Dominik Schmitt²,
6 Anna Frey^{2,3}, Stefan Störk^{2,3}, Stefan Frantz^{2,3}, Peter P. Rainer^{5,9,10§}, Gustavo Campos
7 Ramos^{2,3§}, Encarnita Mariotti-Ferrandiz^{1,11§}

8
9 ¹ Sorbonne Université, INSERM, UMRS959, Immunology-Immunopathology-Immunotherapy (i3),
10 Paris, France

11 ² Department of Internal Medicine I, University Hospital Würzburg, Würzburg, Germany

12 ³ Comprehensive Heart Failure Center, University Hospital Würzburg, Würzburg, Germany

13 ⁴ Diagnostic and Research Institute of Pathology, Medical University of Graz

14 ⁵ Division of Cardiology, Medical University of Graz, Graz, Austria

15 ⁶ Department of Diagnostic and interventional Radiology, University Hospital of Würzburg, Germany

16 ⁷ Institute of Pharmacology and Toxicology, University of Würzburg, Würzburg, Germany.

17 ⁸ Interdisciplinary Bank of Biomaterials and Data Würzburg (IBDW), University Hospital of Würzburg,
18 Würzburg, Germany.

19 ⁹ BioTechMed Graz, Graz, Austria

20 ¹⁰ St. Johann in Tirol General Hospital, St. Johann in Tirol, Austria

21 ¹¹ Institut Universitaire de France (IUF)

22
23 * Equally contributed

24 ** Equally contributed

25
26 **§ Corresponding authors**

27 Peter P. Rainer	38 Gustavo Ramos	50 Encarnita Mariotti-Ferrandiz
28 CardioScience Lab	39 Immunocardiology Lab	51 UMRS959, Immunology-
29 Division of Cardiology	40 University Hospital Würzburg, Immunopathology-	
30 Medical University of Graz	41 Department of Internal Medicine	52 Immunotherapy lab
31 A-8036 Graz, Austria	42 I,	54 Sorbonne Université/INSERM
32 Phone: +43 316 385 12544	43 Am Schwarzenberg 15, Haus	55 83 boulevard de l'Hôpital
33 Fax: +43 316 385 13733	44 A15	56 75013 Paris
34 Email:	45 D-97078 Würzburg, Germany	57 France
35 peter.rainer@medunigraz.at	46 Phone: +49 931 201 46477	58 Phone: +33 1 42 17 74 68
36	47 Fax: +49 931 201 46485	59 Email:
37	48 Email: Ramos_G@ukw.de	60 encarnita.mariotti@sorbonne-
	49	61 universite.fr
		62

63 **Keywords:** Myocardial infarction, ejection fraction, T cell, TCR, lymphocytes.

64

65 **Article type:** Rapid communication

66

67 **List of non-standard abbreviations:**

68 **MRI:** cardiac magnetic resonance imaging, **ESV:** end-systolic volume, **EDV:** end-diastolic volume
69 **FUP:** follow-up visit, **HF:** Heart failure, **LVEF:** left-ventricular ejection fraction, **MI:** myocardial
70 infarction, **STEMI:** ST-elevation myocardial infarction, **TCR:** T cell receptor, **TRA:** T cell receptor,
71 alpha chain, **TRB:** T cell receptor, beta chain

72

73 **Abstract**

74 Myocardial infarction (MI) is associated with an inflammatory process mainly attributed to
75 innate immune components. Very recently, the role of T-cells in both inflammation and
76 healing has been suggested through various human and mouse studies. Previous studies
77 showed that CD4+ and CD8+ T cells affect post-MI repair but did not investigate how to
78 leverage T cell biology to predict post-MI outcomes in patients. For instance, the antigenic
79 trigger of T-cells is still unknown in human. Indeed, others and we identified T-cell specific
80 for myosin infiltrating the myocardium in mouse models of MI, recent studies identified
81 expanded clones in human myocardium, altogether suggesting a tissue-specific T-cell
82 activation. However, it is still unclear how acute post-MI immune responses shape long-term
83 cardiac functional outcomes in individual patients. In this study, we analyzed the role of T-
84 cell in predicting post-MI repair by analyzing the T-cell receptor (TCR) repertoire. Indeed, the
85 TCR repertoire is now considered as a marker of the clinical status of individuals. Previous
86 studies in infectious but also autoimmune contexts showed the potential of the TCR
87 repertoire to predict the disease. Therefore, assessing the dynamic changes in global TCR
88 repertoires may provide valuable information about the antigen-specific immune responses
89 underlying post-MI healing. In our study, we carefully selected patients that suffered from MI
90 on a prospective cohort. The TCR repertoire has been analyzed by next generation
91 sequencing at the index hospitalization with the aim to identify features predict of their
92 healing outcome assessed at 12 months post-MI. While no major variations have been found
93 in diversity of TCR gene usage, we identified unique TCR signatures predicting one-year
94 cardiac functional outcomes. Our result enables early immune-based risk stratification of MI
95 patients and calls for larger studies to develop novel predictive biomarkers and possibly new
96 therapeutics.

97

98 **Main text**

99 Inflammatory processes govern post-myocardial infarction (MI) healing and remodelling. Yet,
100 we cannot predict how acute post-MI immune responses shape long-term cardiac functional
101 outcomes in individual patients. Previous studies showed that CD4⁺ and CD8⁺ T cells are
102 key actors of the post-MI repair regulation(1, 2) but did not investigate how they could be

103 used as predictors of the cardiac outcome. Here, we sought to identify T cell receptor (TCR)
104 signatures predicting cardiac functional outcomes in a well-characterized MI patient
105 cohort(3).

106 TCRs are heterodimeric antigen-specific receptors expressed by T cells, generated through
107 somatic recombination of multiple gene segments in a process that generates a potential
108 repertoire of 10^{19} unique receptors(4). Thus, we hypothesised that analysing TCR
109 repertoires in patients after MI could provide valuable information on the individual
110 immunological status underlying post-MI healing outcomes.

111 First, we selected acute ST-elevation MI-patients from the ETiCS cohort (**E**tiology, **T**itre-
112 **C**ourse, and effect of autoimmunity on **S**urvival study(3), Würzburg arm) exhibiting reduced
113 left ventricular ejection fraction (LVEF) assessed by cardiac magnetic resonance (cMRI) on
114 day 4 post-MI (LVEF <50%, 54/150 patients). Amongst those, we further selected patients
115 with complete serial cMRI scans at baseline and 12 months of follow-up (FU) (38/54
116 patients) (**Figure 1A**). Next, we stratified these patients into “good” versus “poor” healers
117 based on a priori defined cMRI criteria(5)). In brief, patients showing a Δ LVEF <13%
118 between baseline and follow-up (FUP) were defined as “poor healers” (25/38), whereas
119 those showing greater improvement (Δ LVEF >13%) were considered “good healers” (13/38)
120 (**Figure 1B**). In addition to lower Δ LVEF values ($P < 0.0001$), poor healers had significantly
121 greater Δ end-systolic volumes (ESV) ($P < 0.0001$), whereas Δ end-diastolic volumes (EDV)
122 did not differ. Age, BMI, infarct size, and routine blood biomarkers were similar in poor and
123 good healers at baseline (**Figure 1B**). After defining groups of MI-patients with diverging
124 healing phenotypes, we extracted RNA of cryopreserved whole blood samples that were
125 collected at hospital admission from all 25 poor and 13 good healers (Nucleospin RNA blood
126 kit, Macherey-Nagel, Düren, Germany). Due to technical limitations inherent to the
127 processing of archived biomaterial, we obtained RNA with sufficient quality from 19 poor and
128 9 good healers, which were then used for RT-PCR, amplification of TCR alpha and beta
129 chains (TRA and TRB respectively), library preparation and sequencing(6).

130 To evaluate potential global changes in the TCR repertoires found in blood sampled at
131 baseline, we first measured the diversity of TCRs in each group by computing the Shannon
132 entropy and the gene usage frequency (**Figure 1C-D**), two canonical measures of immune
133 repertoire diversity(7). These basic analyses did not reveal any significant differences
134 between groups. We then hypothesised that distinct TCR repertoire composition may explain
135 healing outcomes. Thus, we devised a refined strategy to identify a set of TCRs that
136 effectively differentiates between cardiac functional outcomes (**Figure 1E**). Accordingly,

137 using statistical modelling from Pogorely *et al.*(8) (**Figure 1E**, panel 1), we computed the
138 probability of each TCR being present in the dataset (Pdata) and identified TCRs that were
139 statistically enriched compared to their expected generation (Pgen). Additionally, we
140 searched for TCRs that were differentially represented between good and bad healers(9)
141 (**Figure 1E**, panel 2). Finally, we selected TCRs that met both criteria: being more
142 represented in one group than the other and having a statistically higher probability of being
143 present in the dataset than expected (**Figure 1E**, panel 3). As a result, we discovered a
144 signature of 348 unique TCRs (**Figure 1F**). Hierarchical clustering based on the
145 presence/absence of this signature allowed a separation of good from poor healers (cluster
146 purity = 0.93). Interestingly, this signature comprising 237 unique TRA and 111 unique TRB
147 was primarily present among the good rather than the poor healers. We then assessed the
148 relevance of the signature by comparing its cumulative frequency in the ETiCS patients
149 versus a group of healthy subjects (n = 27). **Figure H** shows that the cumulative frequency
150 of the signature is significantly higher in good healers when compared with poor healers and
151 healthy volunteers (p<0.001 for both TRA and TRB chains). Moreover, the TCR signature
152 was more enriched in healthy subjects when compared with poor healers (p<0.001 for TRA
153 and p<0.01 for TRB), suggesting that the clones found in the signature are specifically
154 depleted in MI patients with poor cardiac functional recovery (**Figure 1G**).

155 In summary, we identified a distinct TCR signature associated with cMRI-assessed post-MI
156 cardiac healing outcomes. Specifically, we found that MI-patients showing a substantial post-
157 MI LVEF improvement were enriched for a set of 348 unique TCRs in the peripheral blood
158 already at baseline (hospitalization). These exploratory findings provide clinical evidence that
159 the individual TCR profile at early stages post-MI contributes to long-term healing outcomes
160 in humans. This supports the notion that modulation of T cell responses may eventually help
161 to improve post-MI remodelling(10) and further confirms that the circulating T cell
162 compartment is impacted by the ongoing cardiac repair. Moreover, the present findings
163 provide a compelling example on the value of immune-based diagnostics in cardiology. Still,
164 our study has some important limitations. First, it was a rather small - though well stratified
165 and characterized - retrospective patient collective. Moreover, since we analysed
166 cryopreserved whole blood samples, we were unable to phenotype T cell subsets that might
167 have accounted for the identified TCR signature. Furthermore, as it is currently not possible
168 to infer which antigens are recognised by the TCRs comprised in this distinct signature, the
169 mechanisms underlying their association with the cardiac functional outcomes remain
170 unknown. Still, our findings underline the potential predictive value of TCR repertoire
171 analyses in MI and might encourage further mechanistic investigations and confirmation in
172 larger patient cohorts.

173

174 **Author contribution:** RJ, VJ, DS, AA, SS recruited the patients for this study and
175 coordinated the clinical study; TG analysed the cMRI images, MH, DA, LV, VS, PPR and
176 GCR retrospectively stratified and selected samples; DA, KLG, PS, PB, and EMF processed
177 the RNA samples, developed bioinformatic tools and analysed the TCR-seq data. DA, MH,
178 KLG, GH, UH, SF, PPR, EMF, GCR made substantial contributions to the conception and
179 design of the present work. KLG, DA, PPR, EMF, and GCR drafted the manuscript. PPR,
180 EMF, and GCR supervised this study. All co-authors critically revised it, made significant
181 intellectual contribution, and approved the manuscript in its final version to be published.

182

183 **Acknowledgements:**

184 This work benefited from equipment and services from the iGenSeq core facility at Institut du
185 Cerveau (ICM, Paris, France) for all the TCR data production.

186

187 **Data availability statement**

188 The anonymised TCR-seq raw files can be made available upon reasonable request.

189

190 **Conflict of interest statement**

191 The authors declare no conflict of interest.

192

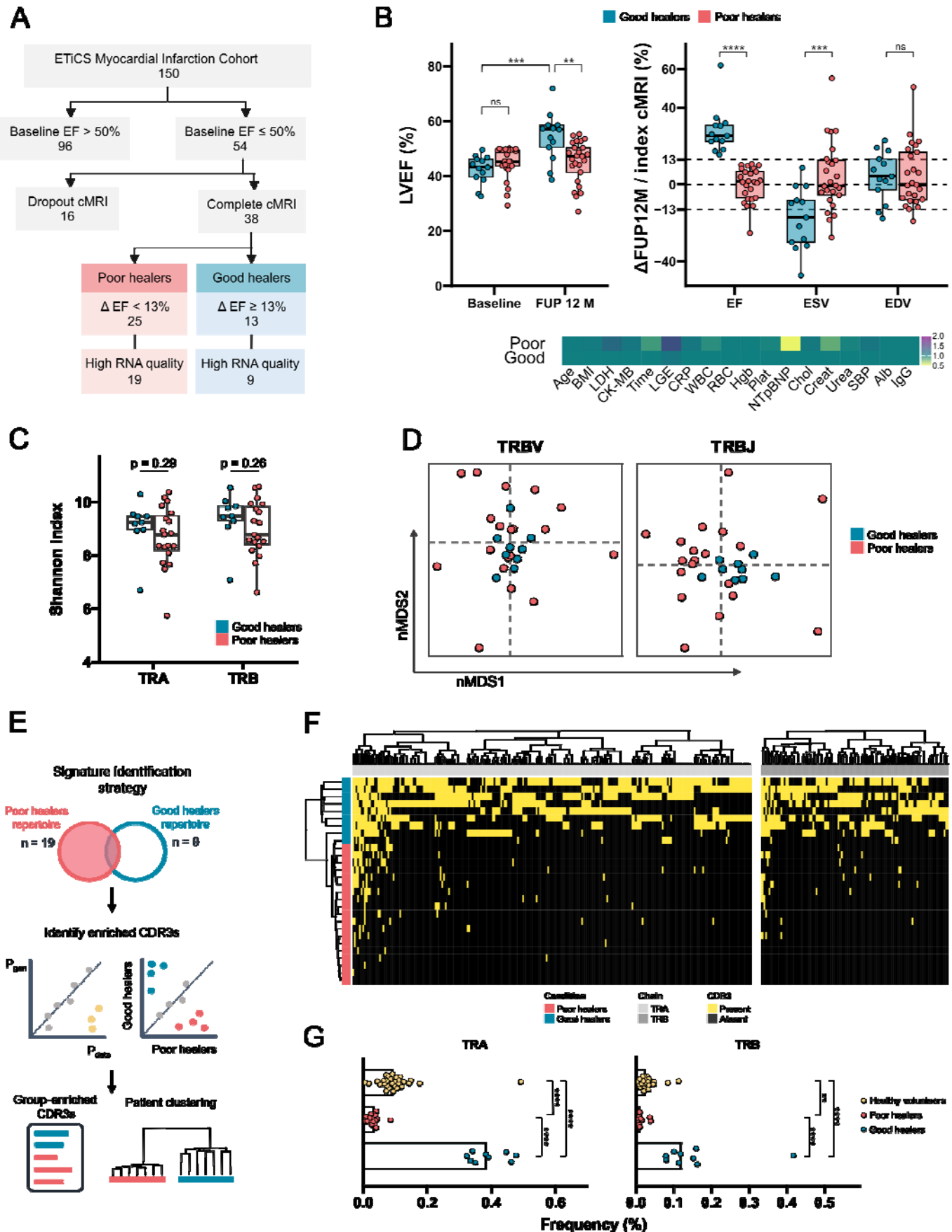
193 **Funding statement**

194 This work was supported by the European Research Area Network—Cardiovascular
195 Diseases [ERANET-CVD JCT2018, AIR-MI Consortium to GCR (01KL1902), PPR (4168-B)
196 and EMF (ANR-18-ECVD-0001)]. The ETICS study was supported by the
197 Bundesministerium für Bildung und Forschung (BMBF), grant “Molecular Diagnostics” FKZ
198 01ES0901 and FKZ 01ES0802 (to V.B.-J. and R.J.). SF work was supported by BMBF (
199 01EO1004). KLG doctoral fellowship was supported by ERANET-CVD JCT2018 (ANR-18-
200 ECVD-0001) and additional support from Sorbonne Université. EMF work was supported by
201 the iReceptorPlus (H2020 Research and Innovation Programme 825821) and SirocCo
202 (ANR-21-CO12-0005-01) grants and the Institut Universitaire de France. GCR is supported
203 by the Interdisciplinary Centre for Clinical Research Würzburg [E-354]. GCR, UH, SF and AF
204 received funding from the German Research foundation (through the Collaborative Research
205 Centre "Cardio-Immune interfaces" SFB1525, grant number 453989101).

206

207 **References**

- 208 1. Forte E, et al. Cross-Priming Dendritic Cells Exacerbate Immunopathology After Ischemic
209 Tissue Damage in the Heart. *Circulation*. 2021;143(8):821–836.
- 210 2. Rieckmann M, et al. Myocardial infarction triggers cardioprotective antigen-specific T
211 helper cell responses. *Journal of Clinical Investigation*. 2019;129(11):4922–4936.
- 212 3. Deubner N, et al. Cardiac beta1-adrenoceptor autoantibodies in human heart disease:
213 rationale and design of the Etiology, Titre-Course, and Survival (ETiCS) Study. *Eur J Heart*
214 *Fail*. 2010;12(7):753–762.
- 215 4. Bradley P, Thomas PG. Using T Cell Receptor Repertoires to Understand the Principles
216 of Adaptive Immune Recognition. *Annu Rev Immunol*. 2019;37(1):547–570.
- 217 5. Bulluck H, et al. Defining left ventricular remodeling following acute ST-segment elevation
218 myocardial infarction using cardiovascular magnetic resonance. *Journal of Cardiovascular*
219 *Magnetic Resonance*. 2017;19(1):26.
- 220 6. Barennes P, et al. Benchmarking of T cell receptor repertoire profiling methods reveals
221 large systematic biases. *Nat Biotechnol*. 2021;39(2):236–245.
- 222 7. Six A, et al. The Past, Present, and Future of Immune Repertoire Biology – The Rise of
223 Next-Generation Repertoire Analysis. *Front Immunol*. 2013;4.
224 <https://doi.org/10.3389/fimmu.2013.00413>.
- 225 8. Pogorelyy MV, et al. Method for identification of condition-associated public antigen
226 receptor sequences. *eLife*. 2018;7:e33050.
- 227 9. Emerson RO, et al. Immunosequencing identifies signatures of cytomegalovirus exposure
228 history and HLA-mediated effects on the T cell repertoire. *Nat Genet*. 2017;49(5):659–665.
- 229 10. Zhao TX, et al. Regulatory T-Cell Response to Low-Dose Interleukin-2 in Ischemic Heart
230 Disease. *NEJM Evidence*. 2022;1(1):EVIDoA2100009.



233 **Figure 1: A distinct T cell receptor signature associates with cardiac functional**
234 **outcomes in myocardial infarction patients. (A)** Patient selection and stratification into
235 good vs poor healers based on cMRI findings. The number of patients is indicated within the
236 boxes **(B)** cMRI findings, including LVEF at baseline and FUP 12 months in good vs poor
237 healers, Δ LVEF (%), Δ ESV and Δ EDV (mL), and distribution of confounding factors between
238 groups (BMI: body-mass index; LDH: lactate dehydrogenase; Time: time from pain to
239 intervention; LGE: infarct size assessed by late gadolinium enhancement, CRP: C-reactive
240 protein, WBC: white blood cell count; RBC: red blood cell count, Hgb: hemoglobin; Plat:
241 platelets count; NTproBNP; N-terminal pro-brain natriuretic peptide; Chol: cholesterol; Creat:
242 creatinine; SBP: systolic blood pressure; Alb: albumin. Values are expressed as fold change
243 from the average levels found in the “good healer” group). **(C)** Shannon index based on
244 clone counts from aligned TCR samples for the alpha and beta chain. P-value was
245 computed using Wilcoxon U-test. **(D)** Non-metric dimensional scaling of the TRB variable
246 (TRBV) and joining (TRBJ) gene usage frequencies. **(E)** Strategy used to identify
247 Complementarity-determining region 3 (CDR3, antigen-binding domain) signature. **(F)**
248 Heatmap of the 348 CDR3 signature found in patients. CDR3, by column, were clustered
249 independently by chain. **(G)** Sample’s cumulative frequencies (in %) of the CDR3 from the
250 signature. Healthy volunteers are depicted in yellow.