

Supplementary Material

eTable 1. Incident hospital diagnosed outcomes or procedures with associated ICD-10/OPCS codes

Disease	ICD-10 code
Arrhythmia	I49
Cardiomyopathy	I42
CHD	I20; I21; I22; I23; I24; I25
Cholecystitis	K800; K804; K81
COVID-19	U07.1; U07.2
Delirium	F05
Dementia	F00; F01; F02; F03; G30
Alzheimer's disease	G30
Non-Alzheimer's dementia	F00; F01; F02; F03
Depression	F32; F33; F34.1
Fractures (any)	S02; S12; S22; S32; S42; S52; S62; S72; S82; S92; T02; T08; T10; T12; T14.2
Fragility fractures	S220; S32; S325; S328; S422; S423; S424; S524; S525; S720; S721; S722; S582; S5823; T08
Hemochromatosis	E83.1
Heart failure	I50; J81
Liver disease (any)	K70; K71; K72; K73; K74; K75; K76; K77
Alcoholic liver disease	K70
Fibrosis & Cirrhosis	K74
Hepatic failure	K72
Liver cancer	C22
Lower respiratory tract infection	J20; J21; J22
Osteoarthritis	M15.0; M15.1; M15.2; M15.9; M16.0; M16.1; M17.0; M17.1; M18.0; M18.1; M19.0
Osteoporosis	M80; M81; M811; M812; M813; M814; M815; M816; M818; M819
Parkinson's disease	G20; F02.3
Pneumonia	J13; J14; J15; J16; J17; J18
Prostate cancer	C61
Rheumatoid arthritis	M05; M06
Sepsis	A021; A039; A207; A241; A217; A227; A239; A267; A282; A327; A392; A393; A394; A40; A41; A427; A548; B007; B377; H440; J950; N390; O85; P36; R651; T814; T880
Skin soft tissue infection	L00; L01; L02; L03; L04; L05; L06; L07; L08
Type 1 or Type 2 diabetes	E10; E11
Urinary tract infection	N30; N34; N39
Upper respiratory tract infection	J39; J06; J04
Procedure	OPCS Code
Ankle replacement	O32; O320; O321; O322; O323; O324; O325
Hip replacement	W37; W370; W371; W372; W373; W374; W38; W380; W381; W382; W383; W384; W46; W460; W461; W462; W463; W47; W470; W471; W472; W473; W93; W930; W931; W932; W933; W94; W940; W941; W942; W943; O171; O172; O173; W580; W581; W582
Knee replacement	O18*; W40*; W41*; W42*
Shoulder replacement	O06; +A11O060; O061; O062; O063; O068; O069; O07; O070; O071; O072; O073; O078; O079; O08; O080; O081; O082; O083; O084; O088; O089; O09; O091; O098; O099; O10; O101; O108; O109

ICD-10 = International Classification of Diseases 10th revision codes; OPCS-4 = OPCS Classification of Interventions and Procedures version 4. Joint replacement surgery variable includes a diagnosis of hip, knee, ankle, or shoulder replacement. Any brain outcome variable includes a diagnosis of dementia, delirium, or Parkinson's disease.

eTable 2. Baseline characteristics of male UK Biobank participants by p.C282Y/H63D genotypes

	No mutations	H63D+/-	H63D+/+	C282Y+/H63+	C282Y+/-	C282Y +/+	Total
Total participants	122,841	47,983	4,673	4,959	24,636	1,298	206,390
Mean age, years (SD)	56.99 (8.1)	57.02 (8.1)	56.99 (8.1)	56.97 (8.1)	57.02 (8.1)	56.84 (8.2)	57.00 (8.1)
Hemochromatosis diagnosis, n (%)	29 (0.02)	17 (0.04)	8 (0.2)	29 (0.6)	27 (0.1)	157 (12.1)	267 (0.1)
Self-reported fatigue, n (%)	12,094 (10.1)	4,865 (10.4)	451 (9.9)	523 (10.9)	2,476 (10.3)	148 (11.8)	20,557 (10.2)
Self-reported fatigue (60+ years), n (%)	4,475 (8.2)	1,858 (8.6)	173 (8.2)	177 (8.0)	924 (8.4)	68 (11.8)	7,675 (8.3)
Depression diagnosis, n (%)	5,883 (4.8)	2,232 (4.7)	220 (4.7)	188 (3.8)	1,146 (4.7)	71 (5.5)	9,740 (4.7)

A total of 206,390 male participants genetically similar to the 1000 Genomes project European reference population with *HFE* genotypic data available in the UK Biobank. Numbers presented are mean (SD) for continuous variables and n (%) for categorical variables. Fatigue = tiredness in more than half the days in past 2 weeks.

eTable 3. Baseline characteristics of female UK Biobank participants by p.C282Y/H63D genotypes

	No mutations	H63D+/-	H63D+/+	C282Y+/H63+	C282Y+/-	C282Y +/+	Total
Total participants	145,694	57,021	5,580	5,760	29,221	1,604	244,880
Mean age, years (SD)	56.62 (7.9)	56.58 (7.9)	56.58 (8.1)	56.46 (7.9)	56.49 (8.0)	56.92 (8.0)	56.60 (7.9)
Hemochromatosis diagnosis, n (%)	8 (0.01)	6 (0.01)	2 (0.04)	12 (0.2)	5 (0.02)	54 (3.4)	87 (0.04)
Self-reported fatigue, n (%)	19,110 (13.5)	7,449 (13.5)	760 (14.1)	785 (14.1)	3,802 (13.4)	220 (14.4)	32,126 (13.5)
Self-reported fatigue (60+ years), n (%),	6,055 (10.0)	2,417 (10.2)	253 (10.9)	229 (9.9)	1,157 (9.6)	77 (11.4)	10,188 (10.0)
Depression diagnosis, n (%)	10,734 (7.4)	4,266 (7.5)	387 (6.9)	432 (7.5)	2,271 (7.8)	123 (7.7)	18,213 (7.4)

A total of 244,880 female participants genetically similar to the 1000 Genomes project European reference population with *HFE* genotypic data available in the UK Biobank. Numbers presented are mean (SD) for continuous variables and n (%) for categorical variables. Fatigue = tiredness in more than half the days in past 2 weeks.

eTable 4. Incident hospital diagnoses in male UK Biobank participants by p.C282Y/H63D genotypes

Males	No mutations	H63D +/-	H63D +/+	C282Y +/- H36D +	C282Y +/-	C282Y +/-+
Hemochromatosis	85 (0.1)	51 (0.1)	29 (0.6)	95 (1.9)	42 (0.2)	288 (25.2)
All-cause mortality	13,976 (11.4)	5,658 (11.8)	540 (11.6)	591 (11.9)	2,996 (12.2)	194 (15.0)
Liver						
Liver disease (any)	3,969 (3.3)	1,621 (3.4)	160 (3.5)	171 (3.5)	803 (3.3)	102 (8.1)
Alcoholic liver disease	608 (0.5)	227 (0.5)	25 (0.5)	28 (0.6)	150 (0.6)	14 (1.1)
Fibrosis & Cirrhosis	618 (0.5)	252 (0.5)	24 (0.5)	26 (0.5)	142 (0.6)	36 (2.8)
Hepatic failure	355 (0.3)	137 (0.3)	10 (0.2)	15 (0.3)	54 (0.2)	3 (0.2)
Cancer						
Liver cancer	363 (0.3)	167 (0.4)	12 (0.3)	20 (0.4)	80 (0.3)	31 (2.4)
Prostate cancer	7,723 (6.4)	3,025 (6.4)	283 (6.2)	319 (6.5)	1,613 (6.7)	104 (8.1)
Musculoskeletal						
Joint replacement surgery (any)	8,429 (7.1)	3,379 (7.3)	315 (7.0)	376 (7.8)	1,801 (7.5)	144 (11.8)
Osteoarthritis	2,873 (2.5)	1,155 (2.6)	97 (2.2)	120 (2.6)	601 (2.6)	61 (5.5)
Fractures (any)	6,092 (5.2)	2,298 (5.1)	212 (4.8)	231 (4.9)	1,243 (5.3)	75 (6.2)
Fragility fractures	2,666 (2.2)	963 (2.0)	79 (1.7)	98 (2.0)	551 (2.3)	44 (3.4)
Osteoporosis	1,522 (1.3)	602 (1.3)	42 (0.9)	64 (1.3)	319 (1.3)	27 (2.1)
Rheumatoid arthritis	1,131 (0.9)	479 (1.0)	38 (0.8)	33 (0.7)	238 (1.0)	15 (1.2)
Brain						
Any brain outcome (dementia, delirium, or Parkinson's disease)	4,619 (3.8)	1,852 (3.9)	177 (3.8)	201 (4.1)	993 (4.0)	76 (5.9)
Dementia	2,306 (1.9)	916 (1.9)	92 (2.0)	97 (2.0)	487 (2.0)	40 (3.1)
Alzheimer's disease	1,026 (0.8)	380 (0.8)	38 (0.8)	50 (1.0)	189 (0.8)	13 (1.0)
Non-Alzheimer's dementia	1,299 (1.1)	540 (1.1)	54 (1.2)	47 (1.0)	303 (1.2)	27 (2.1)
Delirium	2,621 (2.1)	1,028 (2.1)	95 (2.0)	112 (2.3)	603 (2.5)	45 (3.5)
Parkinson's disease	1,116 (0.9)	454 (1.0)	46 (1.0)	43 (0.9)	202 (0.8)	21 (1.6)
Pancreas						
T1 or T2 diabetes	9,515 (8.0)	3,665 (7.9)	368 (8.1)	367 (7.6)	1,822 (7.7)	119 (9.6)
Infection						
Covid-19	2,332 (1.9)	956 (2.0)	96 (2.1)	77 (1.6)	522 (2.1)	35 (2.7)
Cholecystitis	1,624 (1.3)	613 (1.3)	55 (1.2)	73 (1.5)	318 (1.3)	24 (1.9)

Pneumonia	8,019 (6.7)	3,128 (6.7)	273 (6.0)	342 (7.1)	1,651 (6.9)	95 (7.6)
Sepsis	10,081 (8.4)	3,955 (8.4)	374 (8.2)	416 (8.6)	2,065 (8.6)	122 (9.7)
LRTI	4,113 (3.4)	1,694 (3.6)	148 (3.2)	164 (3.3)	914 (3.7)	50 (3.9)
URTI	588 (0.5)	226 (0.5)	21 (0.5)	17 (0.3)	109 (0.4)	4 (0.3)
UTI	7,099 (5.9)	2,773 (5.9)	263 (5.7)	290 (6.0)	1,472 (6.1)	96 (7.6)
SSTI	4,604 (3.8)	1,792 (3.8)	176 (3.8)	216 (4.5)	1,053 (4.4)	66 (5.2)
Cardiovascular						
Arrhythmia	2,283 (1.9)	871 (1.8)	86 (1.9)	77 (1.6)	445 (1.8)	23 (1.8)
Cardiomyopathy	855 (0.7)	330 (0.7)	25 (0.5)	34 (0.7)	179 (0.7)	6 (0.5)
CHD	11,796 (10.5)	4,626 (10.5)	412 (9.6)	485 (10.5)	2,422 (10.7)	133 (11.0)
Heart failure	5,779 (4.7)	2,289 (4.8)	211 (4.6)	229 (4.7)	1,256 (5.1)	68 (5.3)
Mental Health						
Depression	3,929 (3.4)	1,615 (3.5)	132 (3.0)	152 (3.2)	772 (3.3)	46 (3.8)

Incident disease numbers exclude prevalent disease at baseline. Numbers presented are n (%). Abbreviations: CHD, coronary heart disease; T1, type 1; T2, type 2; LRTI, lower respiratory tract infection; URTI, upper respiratory tract infection; UTI, urinary tract infection; SSTI, skin and soft tissue infection. Joint replacement surgery variable includes a diagnosis of hip, knee, ankle, or shoulder replacement. Any brain outcome variable includes a diagnosis of dementia, delirium, or Parkinson's disease.

eTable 5. Hazard ratios of incident disease outcomes in p.C282Y/H63D genotypes in males

Males	No mutations	H63D +/-		H63D +/+		C282Y +/- H36D +		C282Y +/-		C282Y +/+	
		HR (95% CI)	P	HR (95% CI)	P	HR (95% CI)	P	HR (95% CI)	P	HR (95% CI)	P
Hemochromatosis	1	1.53 (1.08-2.17)	0.02	8.95 (5.87-13.64)	2.20*10 ⁻²⁴	27.47 (20.49-36.84)	1.00*10 ⁻¹⁰⁸	2.40 (1.66-3.47)	3.70*10 ⁻⁰⁶	405.29 (317.06-518.11)	2.97*10 ⁻⁵⁰¹
All-cause mortality	1	1.03 (1.00-1.06)	0.05	1.01 (0.93-1.11)	0.75	1.02 (0.94-1.11)	0.58	1.05 (1.00-1.09)	0.03	1.29 (1.12-1.48)	4.70*10 ⁻⁰⁴
Liver											
Liver disease (any)	1	1.05 (0.99-1.11)	0.12	1.06 (0.90-1.24)	0.48	1.06 (0.91-1.23)	0.46	1.00 (0.93-1.78)	0.96	2.56 (2.10-3.12)	8.70*10 ⁻²¹
Alcoholic liver disease	1	0.95 (0.81-1.11)	0.50	1.07 (0.71-1.59)	0.76	1.07 (0.73-1.57)	0.72	1.17 (0.98-1.40)	0.09	1.97 (1.16-3.35)	0.01
Fibrosis & Cirrhosis	1	1.04 (0.90-1.21)	0.58	1.02 (0.68-1.53)	0.93	1.00 (0.68-1.48)	0.99	1.11 (0.92-1.33)	0.28	5.36 (3.83-7.52)	2.00*10 ⁻²²
Hepatic failure	1	0.99 (0.81-1.21)	0.92	0.74 (0.40-1.40)	0.36	1.04 (0.62-1.74)	0.88	0.75 (0.56-1.00)	0.05	0.81 (0.26-2.52)	0.72
Cancer											
Liver cancer	1	1.17 (0.98-1.41)	0.09	0.86 (0.48-1.53)	0.61	1.32 (0.84-2.08)	0.22	1.07 (0.84-1.36)	0.61	7.90 (5.46-11.43)	5.50*10 ⁻²⁸
Prostate cancer	1	1.00 (0.96-1.05)	0.86	0.96 (0.86-1.09)	0.56	1.03 (0.93-1.16)	0.55	1.05 (1.00-1.11)	0.09	1.33 (1.09-1.61)	0.004
Musculoskeletal											
Joint replacement surgery (any)	1	1.03 (0.99-1.07)	0.21	0.98 (0.88-1.10)	0.74	1.10 (1.00-1.22)	0.08	1.06 (1.01-1.12)	0.02	1.78 (1.51-2.10)	6.40*10 ⁻¹²
Osteoarthritis	1	1.03 (0.96-1.10)	0.44	0.89 (0.72-1.09)	0.25	1.01 (0.84-1.21)	0.99	1.03 (0.94-1.12)	0.55	2.10 (1.63-2.71)	1.10*10 ⁻⁰⁸
Fractures (any)	1	0.96 (0.92-1.01)	0.13	0.92 (0.80-1.05)	0.23	0.93 (0.82-1.06)	0.29	1.01 (0.95-1.07)	0.85	1.18 (0.94-1.48)	0.16
Fragility fractures	1	0.92 (0.86-0.99)	0.03	0.78 (0.62-0.98)	0.03	0.90 (0.74-1.10)	0.31	1.02 (0.93-1.12)	0.68	1.59 (1.18-2.14)	0.002
Osteoporosis	1	1.01 (0.92-1.11)	0.85	0.73 (0.53-0.99)	0.04	1.03 (0.80-1.32)	0.82	1.02 (0.91-1.16)	0.70	1.70 (1.16-2.48)	0.007
Rheumatoid arthritis	1	1.08 (0.97-1.21)	0.13	0.89 (0.64-1.23)	0.48	0.73 (0.51-1.03)	0.07	1.05 (0.91-1.20)	0.53	1.30 (0.78-2.16)	0.31
Brain											
Any brain outcome (dementia, delirium, or Parkinson's disease)	1	1.02 (0.97-1.08)	0.39	1.02 (0.88-1.18)	0.83	1.07 (0.93-1.24)	0.32	1.06 (0.99-1.13)	0.11	1.65 (1.31-2.06)	1.70*10 ⁻⁰⁵
Dementia	1	1.01 (0.94-1.09)	0.76	1.06 (0.86-1.31)	0.58	1.04 (0.85-1.27)	0.73	1.04 (0.94-1.14)	0.48	1.72 (1.26-2.35)	0.001
Alzheimer's disease	1	0.94 (0.84-1.06)	0.32	0.98 (0.71-1.36)	0.91	1.21 (0.91-1.60)	0.19	0.90 (0.77-1.05)	0.20	1.26 (0.73-2.17)	0.42
Non-Alzheimer's dementia	1	1.06 (0.96-1.17)	0.25	1.11 (0.84-1.45)	0.46	0.89 (0.66-1.19)	0.43	1.14 (1.01-1.30)	0.04	2.05 (1.40-3.00)	2.40*10 ⁻⁰⁴
Delirium	1	1.00 (0.93-1.08)	0.98	0.96 (0.78-1.18)	0.69	1.06 (0.87-1.28)	0.57	1.13 (1.04-1.24)	0.006	1.69 (1.26-2.27)	4.80*10 ⁻⁰⁴
Parkinson's disease	1	1.04 (0.93-1.16)	0.47	1.09 (0.81-1.47)	0.55	0.96 (0.71-1.30)	0.77	0.90 (0.77-1.04)	0.16	1.86 (1.21-2.87)	0.005
Pancreas											

T1 or T2 diabetes	1	0.98 (0.95-1.02)	0.44	1.02 (0.92-1.13)	0.69	0.95 (0.86-1.06)	0.35	0.95 (0.91-1.00)	0.06	1.25 (1.05-1.50)	0.01
Infection											
COVID-19	1	1.05 (0.97-1.13)	0.21	1.09 (0.89-1.34)	0.4	0.81 (0.65-1.02)	0.07	1.11 (1.01-1.22)	0.03	1.51 (1.08-2.11)	0.02
Cholecystitis	1	0.96 (0.88-1.06)	0.45	0.89 (0.68-1.16)	0.39	1.11 (0.87-1.40)	0.4	0.96 (0.86-1.09)	0.56	1.41 (0.94-2.11)	0.09
Pneumonia	1	1.00 (0.96-1.04)	0.82	0.90 (0.80-1.02)	0.09	1.04 (0.93-1.16)	0.51	1.01 (0.96-1.07)	0.68	1.14 (0.93-1.40)	0.21
Sepsis	1	1.01 (0.97-1.04)	0.78	0.98 (0.88-1.08)	0.66	1.02 (0.92-1.12)	0.7	1.01 (0.96-1.06)	0.70	1.17 (0.98-1.40)	0.09
LRTI	1	1.05 (0.99-1.11)	0.10	0.94 (0.80-1.11)	0.46	0.96 (0.82-1.12)	0.58	1.08 (1.00-1.16)	0.48	1.11 (0.84-1.46)	0.48
URTI	1	0.99 (0.84-1.15)	0.85	0.94 (0.61-1.45)	0.77	0.71 (0.44-1.15)	0.16	0.92 (0.75-1.13)	0.41	0.64 (0.24-1.71)	0.38
UTI	1	1.00 (0.95-1.04)	0.90	0.98 (0.86-1.10)	0.69	1.00 (0.89-1.13)	0.98	1.02 (0.96-1.08)	0.51	1.31 (1.07-1.61)	0.008
SSTI	1	1.00 (0.94-1.05)	0.88	1.01 (0.87-1.17)	0.90	1.16 (1.01-1.33)	0.03	1.14 (1.06-1.22)	1.80*10 ⁻⁰⁴	1.39 (1.09-1.77)	0.008
Cardiovascular											
Arrhythmia	1	0.98 (0.90-1.06)	0.57	1.00 (0.81-1.24)	0.99	0.84 (0.67-1.05)	0.13	0.96 (0.87-1.07)	0.49	0.97 (0.64-1.47)	0.89
Cardiomyopathy	1	0.99 (0.87-1.12)	0.88	0.77 (0.52-1.15)	0.21	0.99 (0.70-1.39)	0.94	1.04 (0.89-1.23)	0.60	0.69 (0.31-1.53)	0.36
CHD	1	1.01 (0.97-1.04)	0.77	0.91 (0.83-1.01)	0.08	1.00 (0.91-1.10)	0.99	1.02 (0.97-1.06)	0.45	1.06 (0.90-1.26)	0.49
Heart failure	1	1.01 (0.96-1.06)	0.67	0.96 (0.84-1.10)	0.59	0.97 (0.85-1.11)	0.65	1.07 (1.01-1.14)	0.03	1.14 (0.89-1.44)	0.29
Mental Health											
Depression	1	1.05 (0.99-1.12)	0.07	0.88 (0.74-1.05)	0.16	0.96 (0.81-1.13)	0.60	0.98 (0.91-1.06)	0.59	1.15 (0.86-1.54)	0.34

HR (Hazard ratio) compared to those with neither *HFE* mutation. Cox proportional hazards regression models adjusted for age, assessment centre, and genetic principal components 1–10. Abbreviations: CHD, coronary heart disease; T1, type 1; T2, type 2; LRTI, lower respiratory tract infection; URTI, upper respiratory tract infection; UTI, urinary tract infection; SSTI, skin and soft tissue infection; CI, confidence interval. Joint replacement surgery variable includes a diagnosis of hip, knee, ankle, or shoulder replacement. Any brain outcome variable includes a diagnosis of dementia, delirium, or Parkinson’s disease.

eTable 6. Incident hospital diagnoses in male UK Biobank participants by p.C282Y/H63D genotypes, excluding a diagnosis of hemochromatosis at baseline

Males	No mutations	H63D +/-	H63D +/+	C282Y +/- H36D +	C282Y +/-	C282Y +/+
Hemochromatosis	85 (14.41)	51 (8.64)	29 (4.92)	95 (16.10)	42 (7.12)	288 (48.81)
All-cause mortality	13959 (58.44)	5653 (23.66)	539 (2.26)	587 (2.46)	2990 (12.52)	160 (0.67)
Liver						
Liver disease (any)	3969 (58.38)	1619 (23.82)	158 (2.32)	167 (2.46)	800 (11.77)	85 (1.25)
Alcoholic liver disease	607 (58.20)	226 (21.67)	25 (2.40)	27 (2.59)	148 (14.19)	10 (0.96)
Fibrosis & Cirrhosis	618 (57.06)	250 (23.08)	23 (2.12)	25 (2.31)	140 (12.93)	27 (2.49)
Hepatic failure	355 (62.06)	137 (23.95)	10 (1.75)	15 (2.65)	54 (9.44)	1 (0.17)
Cancer						
Liver cancer	361 (55.28)	166 (25.42)	12 (1.84)	19 (2.91)	78 (11.94)	17 (2.60)
Prostate cancer	7722 (59.20)	3023 (23.18)	283 (2.17)	318 (2.44)	1610 (12.34)	87 (0.67)
Musculoskeletal						
Joint replacement surgery (any)	8427 (58.44)	3377 (23.42)	315 (2.18)	375 (2.60)	1801 (12.49)	126 (0.87)
Osteoarthritis	2872 (58.70)	1153 (23.56)	97 (1.98)	120 (2.45)	600 (12.26)	51 (1.04)
Fractures (any)	6090 (60.07)	2296 (22.65)	212 (2.09)	231 (2.28)	1243 (12.26)	66 (0.65)
Fragility fractures	2663 (60.63)	963 (21.93)	79 (1.80)	98 (2.23)	550 (12.52)	39 (0.89)
Osteoporosis	1521 (59.37)	601 (23.46)	42 (1.64)	63 (2.46)	319 (12.45)	16 (0.62)
Rheumatoid arthritis	1130 (58.55)	479 (24.82)	38 (1.97)	33 (1.71)	238 (12.33)	12 (0.62)
Brain						
Any brain outcome (dementia, delirium, or Parkinson's disease)	4616 (58.43)	1849 (23.41)	177 (2.24)	200 (2.53)	992 (12.56)	66 (0.84)
Dementia	2305 (58.67)	915 (23.29)	92 (2.34)	97 (2.47)	487 (12.40)	33 (0.84)
Alzheimer's disease	1026 (60.53)	380 (22.42)	38 (2.24)	50 (2.95)	189 (11.15)	12 (0.71)
Non-Alzheimer's dementia	1298 (57.38)	539 (23.83)	54 (2.39)	47 (2.08)	303 (13.40)	21 (0.93)
Delirium	2619 (58.29)	1025 (22.81)	95 (2.11)	111 (2.47)	602 (13.40)	41 (0.91)
Parkinson's disease	1115 (59.34)	454 (24.16)	46 (2.45)	43 (2.29)	202 (10.75)	19 (1.01)
Pancreas						

T2 diabetes	9570 (60.17)	3673 (23.09)	365 (2.30)	368 (2.31)	1831 (11.51)	97 (0.61)
Infection						
Covid-19	2331 (58.14)	953 (23.77)	96 (2.39)	76 (1.90)	522 (13.02)	31 (0.77)
Cholecystitis	1623 (60.07)	612 (22.65)	55 (2.04)	73 (2.70)	316 (11.70)	23 (0.85)
Pneumonia	8014 (59.44)	3124 (23.17)	273 (2.02)	340 (2.52)	1649 (12.23)	83 (0.62)
Sepsis	10075 (59.34)	3951 (23.27)	374 (2.20)	412 (2.43)	2063(12.15)	103 (0.61)
LRTI	4110 (58.12)	1691 (23.91)	148 (2.09)	164 (2.32)	913 (12.91)	45 (0.64)
URTI	588 (61.06)	226 (23.47)	21 (2.18)	17 (1.77)	108 (11.21)	3 (0.31)
UTI	7097 (59.29)	2769 (23.13)	263 (2.20)	286 (2.39)	1470 (12.28)	85 (0.71)
SSTI	4599 (58.27)	1790 (22.68)	176 (2.23)	215 (2.72)	1053 (13.34)	59 (0.75)
Cardiovascular						
Arrhythmia	2282 (60.40)	870 (23.03)	85 (2.25)	77 (2.04)	444 (11.75)	20 (0.53)
Cardiomyopathy	853 (59.86)	330 (23.16)	25 (1.75)	34 (2.39)	178 (12.49)	5 (0.35)
CHD	11793 (59.45)	4622 (23.30)	411 (2.07)	481 (2.42)	2414 (12.17)	115 (0.58)
Heart failure	5775 (58.87)	2285 (23.29)	211 (2.15)	227 (2.31)	1253 (12.77)	59 (0.60)
Mental Health						
Depression	3925 (59.18)	1614 (24.34)	132 (1.99)	150 (2.26)	771 (11.63)	40 (0.60)

Incident disease numbers exclude prevalent disease at baseline. Numbers presented are n (%). Abbreviations: CHD, coronary heart disease; T1, type 1; T2, type 2; LRTI, lower respiratory tract infection; URTI, upper respiratory tract infection; UTI, urinary tract infection; SSTI, skin and soft tissue infection. Joint replacement surgery variable includes a diagnosis of hip, knee, ankle, or shoulder replacement. Any brain outcome variable includes a diagnosis of dementia, delirium, or Parkinson's disease.

eTable 7. Hazard ratios of incident disease outcomes in p.C282Y/H63D genotypes in males, excluding a diagnosis of hemochromatosis at baseline

Males	No mutations (Ref group)	H63D +/-		H63D +/+		C282Y +/- H36D +		C282Y +/-		C282Y +/+	
		HR (95% CI)	P	HR (95% CI)	P	HR (95% CI)	P	HR (95% CI)	P	HR (95% CI)	P
Hemochromatosis	1	1.53 (1.08-2.17)	0.02	8.95 (5.87-13.64)	2.2*10 ⁻²⁴	27.49 (20.50-36.86)	1.0*10 ⁻¹⁰⁸	2.40 (1.66-3.47)	3.6*10 ⁻⁰⁶	405.79 (317.34-518.75)	0.00E+00
All-cause mortality	1	1.03 (1.00-1.07)	0.04	1.01 (0.93-1.11)	0.74	1.02 (0.94-1.11)	0.58	1.05 (1.00-1.09)	0.03	1.22 (1.05-1.43)	0.01
Liver											
Liver disease (any)	1	1.05 (0.99-1.11)	0.13	1.05 (0.89-1.23)	0.57	1.04 (0.89-1.21)	0.63	1.00 (0.92-1.07)	0.9	2.36 (1.90-2.93)	5.3*10 ⁻¹⁵
Alcoholic liver disease	1	0.95 (0.12-1.10)	0.48	1.07 (0.72-1.60)	0.74	1.04 (0.71-1.53)	0.84	1.15 (0.96-1.38)	0.12	1.59 (0.85-2.97)	0.15
Fibrosis & Cirrhosis	1	1.03 (0.89-1.20)	0.66	0.98 (0.64-1.48)	0.91	0.97 (0.65-1.44)	0.87	1.09 (0.91-1.31)	0.35	4.52 (3.07-6.66)	2.1*10 ⁻¹⁴
Hepatic failure	1	0.99 (0.81-1.21)	0.92	0.75 (0.40-1.40)	0.36	1.05 (0.62-1.76)	0.86	0.75 (0.56-1.00)	0.05	0.31 (0.04-2.19)	0.24
Cancer											
Liver cancer	1	1.17 (0.98-1.41)	0.09	0.87 (0.49-1.54)	0.63	1.27 (0.80-2.02)	0.3	1.05 (0.82-1.34)	0.71	4.97 (3.05-8.11)	1.2*10 ⁻¹⁰
Prostate cancer	1	1.00 (0.96-1.05)	0.87	0.97 (0.86-1.09)	0.57	1.04 (0.93-1.16)	0.51	1.05 (0.99-1.11)	0.09	1.27 (1.03-1.57)	0.03
Musculoskeletal											
Joint replacement surgery (any)	1	1.03 (0.99-1.07)	0.22	0.98 (0.88-1.10)	0.75	1.10 (0.99-1.22)	0.06	1.06 (1.01-1.12)	0.02	1.75 (1.47-2.09)	4.8*10 ⁻¹⁰
Osteoarthritis	1	1.03 (0.96-1.10)	0.46	0.89 (0.73-1.09)	0.26	1.02 (0.85-1.22)	0.87	1.03 (0.94-1.12)	0.56	1.97 (1.50-2.60)	1.5*10 ⁻⁰⁶
Fractures (any)	1	0.96 (0.92-1.01)	0.12	0.92 (0.80-1.06)	0.24	0.94 (0.82-1.07)	0.34	1.01 (0.95-1.07)	0.82	1.17 (0.91-1.49)	0.22
Fragility fractures	1	0.92 (0.86-0.99)	0.03	0.78 (0.63-0.98)	0.03	0.91 (0.74-1.11)	0.34	1.02 (0.93-1.12)	0.68	1.60 (1.17-2.20)	3.6*10 ⁻⁰³
Osteoporosis	1	1.01 (0.92-1.11)	0.86	0.73 (0.54-0.99)	0.04	1.02 (0.79-1.31)	0.89	1.03 (0.91-1.16)	0.68	1.14 (0.69-1.86)	0.61
Rheumatoid arthritis	1	1.09 (0.98-1.21)	0.13	0.89 (0.64-1.23)	0.48	0.73 (0.52-1.03)	0.07	1.05 (0.91-1.20)	0.52	1.17 (0.66-2.07)	0.58
Brain											
Any brain outcome (dementia, delirium, or Parkinson's disease)	1	1.02 (0.97-1.08)	0.4	1.02 (0.88-1.18)	0.8	1.08 (0.93-1.24)	0.31	1.06 (0.99-1.13)	0.1	1.62 (1.27-2.07)	1.0*10 ⁻⁰⁴
Dementia	1	1.01 (0.94-1.09)	0.76	1.06 (0.86-1.31)	0.57	1.04 (0.85-1.28)	0.69	1.04 (0.94-1.14)	0.46	1.60 (1.14-2.26)	0.01
Alzheimer's disease	1	0.94 (0.84-1.06)	0.32	0.98 (0.71-1.36)	0.92	1.12 (0.91-1.61)	0.18	0.90 (0.77-1.06)	0.2	1.31 (0.74-2.31)	0.35
Non-Alzheimer's dementia	1	1.06 (0.96-1.17)	0.26	1.11 (0.85-1.46)	0.45	0.89 (0.67-1.20)	0.45	1.14 (1.01-1.30)	0.04	1.81 (1.17-2.78)	0.01
Delirium	1	1.00 (0.93-1.07)	0.98	0.96 (0.78-1.18)	0.7	1.05 (0.87-1.27)	0.59	1.13 (1.04-1.24)	0.01	1.75 (1.28-2.38)	3.9*10 ⁻⁰⁴
Parkinson's disease	1	1.07 (0.98-1.16)	0.13	1.05 (0.84-1.31)	0.67	1.06 (0.85-1.33)	0.58	1.01 (0.91-1.13)	0.79	1.44 (1.02-2.03)	0.04

Pancreas											
T1 or T2 diabetes	1	0.99 (0.95-1.02)	0.45	1.02 (0.92-1.14)	0.66	0.94 (0.85-1.05)	0.28	0.95 (0.91-1.00)	0.06	1.17 (0.96-1.43)	0.11
Infection											
COVID-19	1	1.05 (0.97-1.13)	0.23	1.09 (0.89-1.34)	0.39	0.81 (0.64-1.01)	0.07	1.11 (1.01-1.23)	0.03	1.51 (1.06-2.15)	0.02
Cholecystitis	1	0.96 (0.88-1.06)	0.44	0.89 (0.68-1.17)	0.4	1.11 (0.88-1.41)	0.37	0.96 (0.85-1.08)	0.51	1.54 (1.02-2.32)	0.04
Pneumonia	1	0.99 (0.95-1.04)	0.8	0.90 (0.80-1.02)	0.09	1.04 (0.93-1.16)	0.52	1.01 (0.96-1.07)	0.66	1.13 (0.91-1.40)	0.27
Sepsis	1	1.01 (0.97-1.04)	0.79	0.98 (0.88-1.09)	0.69	1.01 (0.92-1.12)	0.82	1.01 (0.96-1.06)	0.68	1.12 (0.92-1.36)	0.26
LRTI	1	1.05 (0.99-1.11)	0.1	0.94 (0.80-1.11)	0.48	0.96 (0.82-1.13)	0.63	1.08 (1.00-1.16)	0.04	1.14 (0.85-1.52)	0.4
URTI	1	0.99 (0.85-1.15)	0.85	0.94 (0.61-1.45)	0.78	0.71 (0.44-1.16)	0.17	0.91 (0.74-1.12)	0.37	0.55 (0.18-1.70)	0.3
UTI	1	1.00 (0.95-1.04)	0.86	0.98 (0.86-1.11)	0.71	1.00 (0.89-1.12)	0.96	1.02 (0.96-1.08)	0.51	1.32 (1.07-1.64)	0.01
SSTI	1	1.00 (0.94-1.05)	0.89	1.01 (0.87-1.18)	0.87	1.16 (1.01-1.33)	0.03	1.14 (1.07-1.22)	1.4*10 ⁻⁰⁴	1.40 (1.09-1.82)	0.01
Cardiovascular											
Arrhythmia	1	0.98 (0.90-1.06)	0.56	0.99 (0.80-1.23)	0.92	0.84 (0.67-1.06)	0.15	0.96 (0.87-1.07)	0.48	0.96 (0.62-1.49)	0.86
Cardiomyopathy	1	0.99 (0.87-1.13)	0.91	0.78 (0.52-1.16)	0.21	0.99 (0.71-1.40)	0.98	1.04 (0.89-1.22)	0.62	0.65 (0.27-1.57)	0.34
CHD	1	1.00 (0.97-1.04)	0.8	0.91 (0.83-1.01)	0.71	1.00 (0.91-1.09)	0.97	1.01 (0.97-1.06)	0.52	1.04 (0.87-1.25)	0.66
Heart failure	1	1.01 (0.96-1.06)	0.69	0.96 (0.84-1.11)	0.61	0.97 (0.85-1.10)	0.62	1.07 (1.01-1.14)	0.03	1.12 (0.87-1.45)	0.38
Mental Health											
Depression	1	1.05 (1.00-1.12)	0.07	0.88 (0.74-1.05)	0.17	0.95 (0.81-1.12)	0.55	0.98 (0.91-1.06)	0.6	1.13 (0.82-1.54)	0.46

HR (Hazard ratio) compared to those with neither *HFE* mutation. Cox proportional hazards regression models adjusted for age, assessment centre, and genetic principal components 1–10. Abbreviations: CHD, coronary heart disease; T1, type 1; T2, type 2; LRTI, lower respiratory tract infection; URTI, upper respiratory tract infection; UTI, urinary tract infection SSTI, skin and soft tissue infection; CI, confidence interval. Joint replacement surgery variable includes a diagnosis of hip, knee, ankle, or shoulder replacement. Any brain outcome variable includes a diagnosis of dementia, delirium, or Parkinson’s disease.

eTable 8. Cumulative incidence of hemochromatosis from ages 40-80 years by HFE genotypes

	Total Cohort (n=451,270)			No mutations			H63D Heterozygotes			H63D Homozygotes			Compound C282Y/H63D Heterozygotes			p.C282Y Heterozygotes			p.C282Y homozygotes		
	Incident diagnosis			Incident diagnosis			Incident diagnosis			Incident diagnosis			Incident diagnosis			Incident diagnosis			Incident diagnosis		
	%	(95% CI)		%	(95% CI)		%	(95% CI)		%	(95% CI)		%	(95% CI)		%	(95% CI)		%	(95% CI)	
Male age group (years)																					
40 - 45	0.1	0.0	0.2	0.0	0.0	0.2	0.0	0.0	0.0	0.0	0.0	0.0	0.3	0.0	1.9	0.0	0.0	0.0	6.8	2.8	16.1
46 - 50	0.1	0.1	0.2	0.0	0.0	0.2	0.0	0.0	0.1	0.4	0.1	1.3	0.7	0.2	2.0	0.0	0.0	0.0	12.5	7.3	20.8
51 - 55	0.2	0.2	0.3	0.0	0.0	0.2	0.0	0.0	0.1	0.6	0.3	1.5	1.5	0.8	2.6	0.0	0.0	0.1	20.4	14.7	27.9
56 - 60	0.3	0.3	0.4	0.1	0.0	0.2	0.1	0.0	0.1	0.8	0.4	1.6	2.1	1.3	3.2	0.1	0.1	0.2	28.4	22.7	35.3
61 - 65	0.4	0.3	0.5	0.1	0.0	0.2	0.1	0.1	0.2	1.0	0.6	1.8	2.6	1.8	3.8	0.2	0.1	0.3	36.1	30.5	42.4
66 - 70	0.5	0.5	0.6	0.1	0.1	0.2	0.2	0.1	0.2	1.2	0.7	2.1	3.6	2.7	4.8	0.3	0.2	0.4	43.0	37.6	48.7
71 - 75	0.6	0.6	0.7	0.2	0.1	0.2	0.2	0.1	0.3	1.4	0.9	2.2	4.3	3.4	5.5	0.3	0.2	0.4	48.9	43.8	54.2
76 - 80	0.8	0.7	0.9	0.2	0.1	0.3	0.3	0.2	0.4	1.9	1.3	2.9	5.4	4.3	6.8	0.4	0.3	0.6	56.4	51.4	61.6
Female age group (years)																					
40 - 45	0.0	0.0	0.0	0.0	0.0	0.0	0.0	0.0	0.0	0.0	0.0	0.0	0.2	0.0	1.5	0.0	0.0	0.0	0.0	0.0	0.0
46 - 50	0.0	0.0	0.1	0.0	0.0	0.0	0.0	0.0	0.1	0.2	0.1	0.9	0.3	0.1	1.3	0.0	0.0	0.0	3.4	1.7	6.7
51 - 55	0.1	0.1	0.1	0.0	0.0	0.0	0.0	0.0	0.1	0.3	0.1	1.0	0.5	0.2	1.3	0.0	0.0	0.1	8.2	5.7	11.7
56 - 60	0.1	0.1	0.2	0.0	0.0	0.0	0.1	0.0	0.1	0.4	0.2	1.0	0.7	0.4	1.5	0.1	0.1	0.2	14.5	11.5	18.1
61 - 65	0.2	0.2	0.3	0.0	0.0	0.0	0.1	0.0	0.1	0.5	0.2	1.1	1.1	0.6	1.8	0.1	0.1	0.2	21.2	17.9	24.9
66 - 70	0.3	0.3	0.3	0.0	0.0	0.1	0.1	0.1	0.2	0.5	0.2	1.1	1.5	1.0	2.2	0.2	0.1	0.3	27.6	24.2	31.3
71 - 75	0.4	0.3	0.4	0.1	0.0	0.1	0.1	0.1	0.2	0.6	0.3	1.2	1.9	1.4	2.7	0.2	0.2	0.3	33.5	30.0	37.2
76 - 80	0.5	0.5	0.6	0.1	0.1	0.1	0.1	0.1	0.2	0.6	0.3	1.3	2.7	2.0	3.6	0.3	0.2	0.5	40.5	36.7	44.5

eTable 9. Incident hospital diagnoses in female UK Biobank participants by p.C282Y/H63D genotypes

Females	No mutations	H63D +/-	H63D +/+	C282Y +/ H36D +	C282Y +/-	C282Y +/+
Hemochromatosis	44 (0.03)	35 (0.1)	12 (0.2)	57 (1.0)	37 (0.1)	291 (18.8)
All-cause mortality	9,849 (6.8)	3,810 (6.7)	363 (6.5)	393 (6.8)	2,020 (6.9)	129 (8.0)
Liver						
Liver disease (any)	3,822 (2.6)	1,512 (2.7)	146 (2.6)	179 (3.1)	825 (2.9)	69 (4.3)
Alcoholic liver disease	181 (0.1)	78 (0.1)	11 (0.2)	6 (0.1)	59 (0.2)	7 (0.4)
Fibrosis & Cirrhosis	475 (0.3)	163 (0.3)	16 (0.3)	21 (0.4)	89 (0.3)	14 (0.9)
Hepatic failure	200 (0.1)	60 (0.1)	7 (0.1)	4 (0.1)	35 (0.1)	5 (0.3)
Cancer						
Liver cancer	232 (0.2)	114 (0.2)	10 (0.2)	8 (0.1)	49 (0.2)	3 (0.2)
Musculoskeletal						
Joint replacement surgery (any)	12,356 (8.7)	4,772 (8.6)	454 (8.4)	501 (8.9)	2,415 (8.5)	158 (10.3)
Osteoarthritis	4,344 (3.3)	1,681 (3.3)	177 (3.6)	190 (3.7)	893 (3.4)	70 (5.1)
Fractures (any)	10,666 (7.6)	4,204 (7.7)	376 (7.0)	430 (7.7)	2,189 (7.8)	124 (8.0)
Fragility fractures	6,308 (4.4)	2,517 (4.5)	214 (3.9)	275 (4.8)	1,265 (4.4)	63 (4.0)
Osteoporosis	6,990 (5.0)	2,580 (4.7)	254 (4.7)	245 (4.4)	1,390 (4.9)	103 (6.7)
Rheumatoid arthritis	2,189 (1.5)	819 (1.5)	79 (1.4)	87 (1.5)	391 (1.4)	26 (1.6)
Brain						
Any brain outcome (dementia, delirium, or Parkinson's disease)	3,876 (2.7)	1,547 (2.7)	142 (2.6)	155 (2.7)	777 (2.7)	61 (3.8)
Dementia	2,159 (1.5)	837 (1.5)	68 (1.2)	84 (1.5)	440 (1.5)	31 (1.9)
Alzheimer's disease	1,072 (0.7)	450 (0.8)	37 (0.7)	51 (0.9)	220 (0.8)	14 (0.9)
Non-Alzheimer's dementia	1,099 (0.8)	395 (0.7)	31 (0.6)	34 (0.6)	227 (0.8)	17 (1.1)
Delirium	1,983 (1.4)	823 (1.4)	81 (1.5)	82 (1.4)	406 (1.4)	36 (2.2)
Parkinson's disease	691 (0.5)	249 (0.4)	26 (0.5)	30 (0.5)	134 (0.5)	8 (0.5)
Pancreas						
T1 or T2 diabetes	6,532 (4.6)	2,583 (4.6)	245 (4.5)	278 (4.9)	1,327 (4.6)	87 (5.5)
Infection						
Covid-19	1,809 (1.2)	720 (1.3)	72 (1.3)	72 (1.3)	383 (1.3)	21 (1.3)
Cholecystitis	1,749 (1.2)	675 (1.2)	62 (1.1)	69 (1.2)	351 (1.2)	30 (1.9)
Pneumonia	6,130 (4.3)	2,408 (4.3)	242 (4.4)	255 (4.5)	1,276 (4.5)	75 (4.8)

Sepsis	10,026 (7.0)	3,840 (6.9)	379 (7.0)	414 (7.4)	2,103 (7.4)	133 (8.5)
LRTI	3,875 (2.7)	1,439 (2.5)	139 (2.5)	144 (2.5)	821 (2.8)	53 (3.3)
URTI	636 (0.4)	279 (0.5)	21 (0.4)	21 (0.4)	142 (0.5)	2 (0.1)
UTI	9,140 (6.5)	3,493 (6.4)	351 (6.6)	366 (6.7)	1,905 (6.8)	126 (8.2)
SSTI	3,900 (2.7)	1,534 (2.7)	158 (2.9)	153 (2.7)	799 (2.8)	53 (3.3)
Cardiovascular						
Arrhythmia	1,655 (1.1)	656 (1.2)	48 (0.9)	67 (1.2)	323 (1.1)	20 (1.3)
Cardiomyopathy	608 (0.4)	230 (0.4)	19 (0.3)	26 (0.5)	130 (0.5)	3 (0.2)
CHD	7,402 (5.3)	2,877 (5.2)	294 (5.4)	293 (5.3)	1,502 (5.3)	82 (5.3)
Heart failure	3,551 (2.4)	1,431 (2.5)	127 (2.3)	155 (2.7)	753 (2.6)	56 (3.5)
Mental Health						
Depression	6,415 (4.8)	2430 (4.6)	269 (5.2)	279 (5.2)	1317 (4.9)	64 (4.3)

Incident disease numbers exclude prevalent disease at baseline. Numbers presented are n (%). Abbreviations: CHD, coronary heart disease; T1, type 1; T2, type 2; LRTI, lower respiratory tract infection; URTI, upper respiratory tract infection; UTI, urinary tract infection; SSTI, skin and soft tissue infection. Joint replacement surgery variable includes a diagnosis of hip, knee, ankle, or shoulder replacement. Any brain outcome variable includes a diagnosis of dementia, delirium, or Parkinson's disease.

eTable 10. Hazard ratios of incident disease outcomes in p.C282Y/H63D genotypes in females

Females	No mutations	H63D +/-		H63D +/+		C282Y +/- H36D +		C282Y +/-		C282Y +/+	
		HR (95% CI)	P	HR (95% CI)	P	HR (95% CI)	P	HR (95% CI)	P	HR (95% CI)	P
Hemochromatosis	1	2.04 (1.31-3.17)	1.70*10 ⁻⁰³	7.10 (3.75-13.45)	1.80*10 ⁻⁰⁹	32.78 (22.10-48.63)	2.20*10 ⁻⁶⁷	4.15 (2.68-6.44)	1.80*10 ⁻¹⁰	674.10 (489.11-929.05)	2.47*10 ⁻³⁴⁶
All-cause mortality	1	0.99 (0.96-1.03)	0.68	0.95 (0.85-1.05)	0.3	1.01 (0.91-1.11)	0.9	1.01 (0.96-1.06)	0.62	1.10 (0.92-1.31)	0.28
Liver											
Liver disease (any)	1	1.01 (0.95-1.07)	0.72	1.00 (0.84-1.17)	0.96	1.19 (1.02-1.38)	0.03	1.08 (1.00-1.16)	0.06	1.62 (1.27-2.05)	7.80*10 ⁻⁰⁵
Alcoholic liver disease	1	1.09 (0.84-1.43)	0.51	1.56 (0.85-2.87)	0.15	0.78 (0.35-1.77)	0.56	1.53 (1.14-2.05)	0.005	3.07 (1.44-6.54)	0.004
Fibrosis & Cirrhosis	1	0.87 (0.73-1.04)	0.13	0.87 (0.53-1.43)	0.58	1.10 (0.71-1.71)	0.67	0.92 (0.74-1.16)	0.49	2.56 (1.50-4.36)	0.001
Hepatic failure	1	0.77 (0.58-1.02)	0.07	0.92 (0.43-1.94)	0.82	0.49 (0.18-1.33)	0.16	0.85 (0.59-1.21)	0.37	2.09 (0.86-5.08)	0.1
Cancer											
Liver cancer	1	1.26 (1.01-1.58)	0.04	1.13 (0.60-2.13)	0.71	0.89 (0.44-1.81)	0.75	1.06 (0.78-1.45)	0.69	1.17 (0.37-3.66)	0.79
Musculoskeletal											
Joint replacement surgery (any)	1	0.99 (0.96-1.02)	0.55	0.97 (0.88-1.06)	0.47	1.04 (0.95-1.14)	0.34	0.99 (0.94-1.03)	0.51	1.18 (1.01-1.38)	0.04
Osteoarthritis	1	0.99 (0.94-1.05)	0.71	1.06 (0.91-1.23)	0.46	1.10 (0.95-1.27)	0.21	1.02 (0.95-1.10)	0.6	1.44 (1.14-1.82)	0.002
Fractures (any)	1	1.01 (0.97-1.04)	0.65	0.91 (0.82-1.01)	0.07	1.01 (0.92-1.12)	0.79	1.02 (0.97-1.07)	0.42	1.00 (0.84-1.20)	0.96
Fragility fractures	1	1.02 (0.98-1.07)	0.38	0.87 (0.76-1.00)	0.05	1.10 (0.97-1.24)	0.13	0.99 (0.93-1.05)	0.74	0.85 (0.66-1.09)	0.19
Osteoporosis	1	0.94 (0.90-0.99)	0.01	0.94 (0.83-1.07)	0.34	0.89 (0.79-1.01)	0.08	0.99 (0.94-1.05)	0.75	1.28 (1.06-1.56)	0.01
Rheumatoid arthritis	1	0.96 (0.88-1.04)	0.28	0.94 (0.75-1.17)	0.58	1.01 (0.82-1.26)	0.9	0.89 (0.80-0.99)	0.03	1.04 (0.71-1.53)	0.84
Brain											
Any brain outcome (dementia, delirium, or Parkinson's disease)	1	1.02 (0.97-1.09)	0.43	0.93 (0.79-1.11)	0.43	1.03 (0.88-1.21)	0.72	1.00 (0.92-1.08)	0.9	1.30 (1.01-1.68)	0.04
Dementia	1	1.00 (0.92-1.08)	0.94	0.80 (0.63-1.02)	0.07	1.00 (0.81-1.25)	0.98	1.01 (0.91-1.12)	0.86	1.16 (0.81-1.66)	0.41
Alzheimer's disease	1	1.08 (0.97-1.20)	0.18	0.87 (0.63-1.20)	0.4	1.22 (0.92-1.61)	0.17	1.02 (0.88-1.17)	0.84	1.04 (0.62-1.77)	0.88

Non-Alzheimer's dementia	1	0.93 (0.83-1.04)	0.2	0.72 (0.50-1.03)	0.07	0.81 (0.57-1.13)	0.21	1.03 (0.89-1.18)	0.73	1.27 (0.76-2.05)	0.33
Delirium	1	1.06 (0.98-1.15)	0.13	1.05 (0.84-1.31)	0.67	1.06 (0.85-1.32)	0.6	1.01 (0.91-1.13)	0.8	1.50 (1.08-2.08)	0.02
Parkinson's disease	1	0.93 (0.80-1.07)	0.29	0.97 (0.66-1.44)	0.89	1.14 (0.79-1.65)	0.48	0.98 (0.81-1.18)	0.84	1.00 (0.50-2.00)	0.99
Pancreas											
T1 or T2 diabetes	1	1.01 (0.97-1.06)	0.55	0.98 (0.86-1.11)	0.77	1.09 (0.97-1.23)	0.17	1.01 (0.96-1.08)	0.6	1.18 (0.95-1.46)	0.13
Infection											
COVID-19	1	1.02 (0.94-1.11)	0.66	1.03 (0.81-1.30)	0.83	1.02 (0.80-1.29)	0.9	1.06 (0.94-1.18)	0.34	1.00 (0.65-1.54)	0.99
Cholecystitis	1	0.98 (0.90-1.08)	0.73	0.92 (0.71-1.18)	0.52	0.99 (0.78-1.26)	0.92	0.99 (0.88-1.11)	0.86	1.49 (1.04-2.13)	0.03
Pneumonia	1	1.01 (0.96-1.05)	0.83	1.02 (0.90-1.16)	0.72	1.06 (0.93-1.20)	0.4	1.03 (0.97-1.10)	0.29	1.05 (0.83-1.32)	0.69
Sepsis	1	0.98 (0.94-1.01)	0.23	0.97 (0.88-1.08)	0.61	1.05 (0.95-1.15)	0.36	1.04 (0.99-1.09)	0.12	1.13 (0.96-1.35)	0.15
LRTI	1	0.95 (0.89-1.01)	0.08	0.92 (0.78-1.09)	0.34	0.93 (0.79-1.10)	0.39	1.04 (0.97-1.12)	0.3	1.16 (0.89-1.52)	0.28
URTI	1	1.12 (0.98-1.30)	0.1	0.86 (0.56-1.33)	0.51	0.84 (0.54-1.30)	0.43	1.12 (0.93-1.34)	0.24	0.28 (0.07-1.12)	0.07
UTI	1	0.97 (0.94-1.01)	0.18	0.99 (0.89-1.10)	0.82	1.01 (0.91-1.13)	0.8	1.03 (0.98-1.08)	0.23	1.19 (0.99-1.41)	0.06
SSTI	1	1.01 (0.95-1.07)	0.79	1.05 (0.90-1.23)	0.54	1.00 (0.85-1.18)	0.97	1.03 (0.95-1.11)	0.52	1.20 (0.92-1.58)	0.18
Cardiovascular											
Arrhythmia	1	1.02 (0.93-1.11)	0.69	0.76 (0.57-1.01)	0.06	1.04 (0.81-1.33)	0.75	0.98 (0.87-1.11)	0.78	1.07 (0.69-1.67)	0.75
Cardiomyopathy	1	0.97 (0.83-1.13)	0.71	0.82 (0.52-1.30)	0.41	1.11 (0.75-1.64)	0.61	1.08 (0.90-1.31)	0.41	0.44 (0.14-1.37)	0.16
CHD	1	1.00 (0.95-1.04)	0.82	1.03 (0.92-1.16)	0.61	1.01 (0.90-1.14)	0.86	1.01 (0.96-1.07)	0.71	0.94 (0.76-1.17)	0.6
Heart failure	1	1.04 (0.97-1.10)	0.27	0.92 (0.77-1.10)	0.35	1.12 (0.96-1.32)	0.15	1.06 (0.98-1.15)	0.16	1.34 (1.03-1.75)	0.03
Mental Health											
Depression	1	0.97 (0.93-1.02)	0.2	1.10 (0.97-1.24)	0.14	1.11 (0.99-1.25)	0.09	1.03 (0.97-1.09)	0.38	0.90 (0.70-1.15)	0.39

HR (Hazard ratio) compared to those with neither *HFE* mutation. Cox proportional hazards regression models adjusted for age, assessment centre, and genetic principal components 1–10. Abbreviations: CHD, coronary heart disease; T1, type 1; T2, type 2; LRTI, lower respiratory tract infection; URTI, upper respiratory tract infection; UTI, urinary tract infection SSTI, skin and soft tissue infection; CI, confidence interval. Joint replacement surgery variable includes a diagnosis of hip, knee, ankle, or shoulder replacement. Any brain outcome variable includes a diagnosis of dementia, delirium, or Parkinson's disease.

eTable 11. Incident hospital diagnoses in female UK Biobank participants by p.C282Y/H63D genotypes, excluding a diagnosis of hemochromatosis at baseline

Females	No mutations	H63D +/-	H63D +/+	C282Y +/- H36D +	C282Y +/-	C282Y +/+
Hemochromatosis	44 (9.24)	35 (7.35)	12 (2.52)	57 (11.97)	37 (7.77)	291 (61.13)
All-cause mortality	9847 (59.47)	3810 (23.01)	363 (2.19)	390 (2.36)	2020 (12.20)	127 (0.77)
Liver						
Liver disease (any)	3821 (58.38)	1511 (23.09)	146 (2.23)	177 (2.70)	825 (12.61)	65 (0.99)
Alcoholic liver disease	180 (52.94)	78 (22.94)	11 (3.24)	6 (1.76)	59 (17.35)	6 (1.76)
Fibrosis & Cirrhosis	473 (61.03)	162 (20.90)	16 (2.06)	21 (2.71)	89 (11.48)	14 (1.81)
Hepatic failure	199 (64.40)	60 (19.42)	7 (2.27)	4 (1.29)	35 (11.33)	4 (1.29)
Cancer						
Liver cancer	232 (55.77)	114 (27.40)	10 (2.40)	8 (1.92)	49 (11.78)	3 (0.72)
Musculoskeletal						
Joint replacement surgery (any)	12355 (59.84)	4771 (23.11)	454 (2.20)	500 (2.42)	2415 (11.70)	150 (0.73)
Osteoarthritis	4343 (59.08)	1681 (22.87)	177 (2.41)	189 (2.57)	893 (12.15)	68 (0.93)
Fractures (any)	10665 (59.31)	4204 (23.38)	375 (2.09)	430 (2.39)	2188 (12.17)	119 (0.66)
Fragility fractures	6308 (59.29)	2517 (23.66)	214 (2.01)	275 (2.58)	1264 (11.88)	61 (0.57)
Osteoporosis	6990 (60.50)	2580 (22.33)	254 (2.20)	244 (2.11)	1389 (12.02)	97 (0.84)
Rheumatoid arthritis	2188 (61.05)	818 (22.82)	79 (2.20)	86 (2.40)	390 (10.88)	23 (0.64)
Brain						
Any brain outcome (dementia, delirium, or Parkinson's disease)	3875 (59.16)	1547 (23.62)	142 (2.17)	154 (2.35)	777 (11.86)	55 (0.84)
Dementia	2159 (59.72)	837 (23.15)	68 (1.88)	83 (2.30)	440 (12.17)	28(0.77)
Alzheimer's disease	1072 (58.20)	450 (24.43)	37 (2.01)	50 (2.71)	220 (11.94)	13 (0.71)
Non-Alzheimer's dementia	1099 (61.02)	395 (21.93)	31 (1.72)	34(1.89)	227 (12.60)	15 (0.83)
Delirium	1982 (58.17)	823 (24.16)	81 (2.38)	82 (2.41)	406 (11.92)	33 (0.97)

Parkinson's disease	691 (60.72)	249 (21.88)	26 (2.28)	30 (2.64)	134 (11.78)	8 (0.70)
Pancreas						
T2 diabetes	6538 (59.27)	2575 (23.35)	240 (2.18)	275 (2.49)	1322 (11.99)	80 (0.73)
Infection						
Covid-19	1809 (58.83)	719 (23.38)	72 (2.34)	72 (2.34)	383 (12.46)	20 (0.65)
Cholecystitis	1749 (59.61)	675 (23.01)	62 (2.11)	68 (2.32)	351 (11.96)	29 (0.99)
Pneumonia	6127 (59.06)	2406 (23.19)	242 (2.33)	254 (2.45)	1275 (12.29)	70 (0.67)
Sepsis	10024 (59.37)	3837 (22.72)	379 (2.24)	414 (2.45)	2103 (12.45)	128 (0.76)
LRTI	3875 (59.94)	1437 (22.23)	139 (2.15)	143 (2.21)	821 (12.70)	50 (0.77)
URTI	636 (57.87)	277 (25.20)	21 (1.91)	21 (1.91)	142 (12.92)	2 (0.18)
UTI	9137 (59.45)	3490 (22.71)	351 (2.28)	366 (2.38)	1905 (12.40)	119 (0.77)
SSTI	3900 (59.15)	1533 (23.25)	158 (2.40)	152 (2.31)	799 (12.12)	51 (0.77)
Cardiovascular						
Arrhythmia	1654 (59.75)	656 (23.70)	48 (1.73)	67 (2.42)	323 (11.67)	20 (0.72)
Cardiomyopathy	608 (59.90)	230 (22.66)	19 (1.87)	25 (2.46)	130 (12.81)	3 (0.30)
CHD	7401 (59.49)	2875 (23.11)	294 (2.36)	291 (2.34)	1502 (12.07)	77 (0.62)
Heart failure	3550 (58.50)	1430 (23.57)	127 (2.09)	154 (2.54)	753 (12.41)	54 (0.89)
Mental Health						
Depression	6414 (59.58)	2430 (22.57)	269 (2.50)	278 (2.58)	1317 (12.23)	57 (0.53)

Incident disease numbers exclude prevalent disease at baseline. Numbers presented are n (%). Abbreviations: CHD, coronary heart disease; T1, type 1; T2, type 2; LRTI, lower respiratory tract infection; URTI, upper respiratory tract infection; UTI, urinary tract infection; SSTI, skin and soft tissue infection. Joint replacement surgery variable includes a diagnosis of hip, knee, ankle, or shoulder replacement. Any brain outcome variable includes a diagnosis of dementia, delirium, or Parkinson's disease.

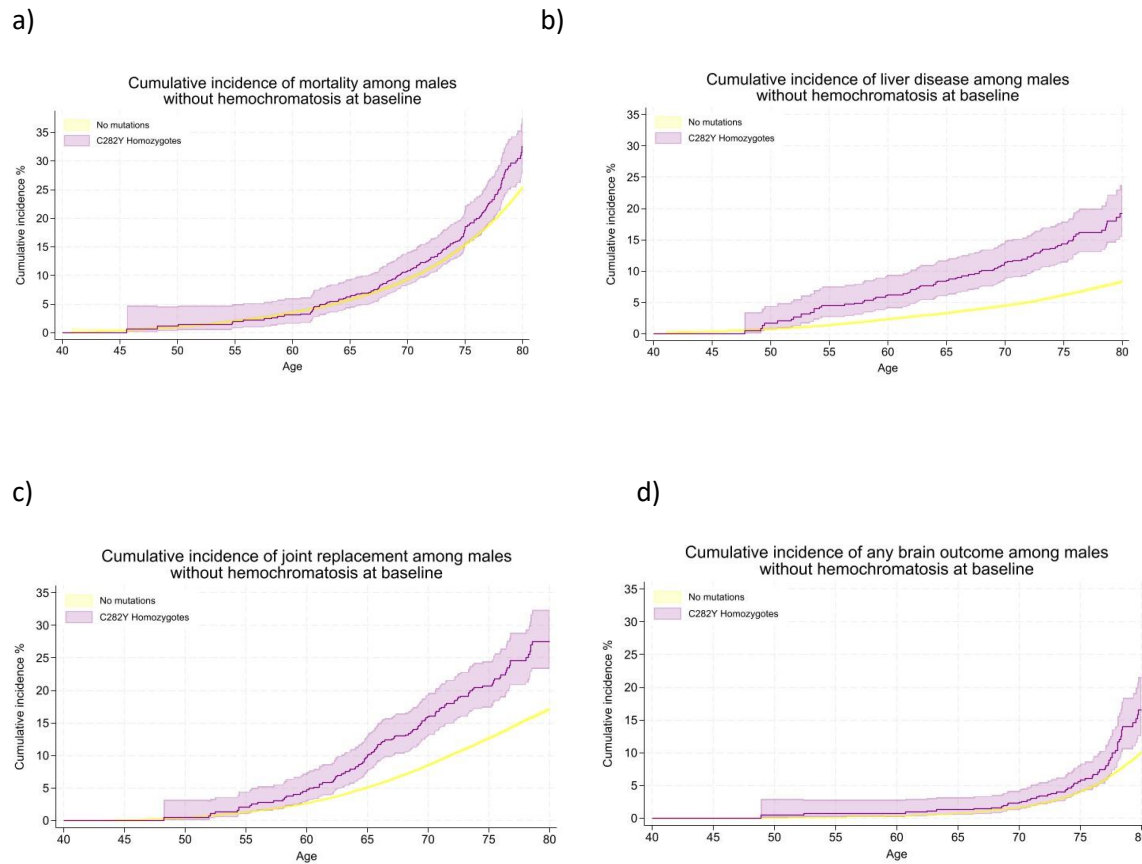
eTable 12. Hazard ratios of incident disease outcomes in p.C282Y/H63D genotypes in females, excluding a diagnosis of hemochromatosis at baseline

Females	No mutations (Ref group)	H63D +/-		H63D +/+		C282Y +/- H36D +		C282Y +/-		C282Y +/+	
		HR (95% CI)	P	HR (95% CI)	P	HR (95% CI)	P	HR (95% CI)	P	HR (95% CI)	P
Hemochromatosis	1	2.04 (1.31-3.17)	1.70E-03	7.10 (3.75-13.45)	1.80E-09	32.79 (22.10-48.64)	2.10E-67	4.15 (2.68-6.44)	1.80E-10	675.18 (489.89-930.55)	0.00E+00
All-cause mortality	1	0.99 (0.96-1.03)	0.69	0.95 (0.85-1.05)	0.31	1.00 (0.90-1.11)	0.98	1.01 (0.97-1.06)	0.61	1.13 (0.95-1.35)	0.16
Liver											
Liver disease (any)	1	1.01 (0.95-1.07)	0.73	1.00 (0.84-1.18)	0.97	1.18 (1.01-1.37)	0.03	1.08 (1.00-1.16)	0.06	1.58 (1.23-2.02)	2.80E-04
Alcoholic liver disease	1	1.10 (0.84-1.43)	0.48	1.57 (0.85-2.88)	0.15	0.79 (0.35-1.78)	0.57	1.54 (1.14-2.06)	0.43	2.75 (1.21-6.20)	0.02
Fibrosis & Cirrhosis	1	0.87 (0.73-1.04)	0.13	0.87 (0.53-1.44)	0.60	1.11 (0.72-1.72)	0.65	0.93 (0.74-1.16)	0.51	2.67 (1.57-4.55)	3.00E-04
Hepatic failure	1	0.77 (0.58-1.03)	0.08	0.92 (0.43-1.95)	0.83	0.50 (0.18-1.34)	0.17	0.85 (0.59-1.22)	0.38	1.76 (0.65-4.74)	0.26
Cancer											
Liver cancer	1	1.26 (1.10-1.58)	0.04	1.13 (0.60-2.13)	0.71	0.89 (0.44-1.81)	0.75	1.06 (0.78-1.45)	0.69	1.22 (0.39-3.81)	0.73
Musculoskeletal											
Joint replacement surgery (any)	1	0.99 (0.96-1.02)	0.54	0.97 (0.88-1.06)	0.47	1.04 (0.95-1.14)	0.35	0.99 (0.94-1.03)	0.51	1.16 (0.99-1.37)	0.07
Osteoarthritis	1	0.99 (0.94-1.05)	0.72	1.06 (0.91-1.23)	0.46	1.09 (0.95-1.27)	0.22	1.02 (0.95-1.10)	0.59	1.46 (1.15-1.85)	2.10E-03
Fractures (any)	1	1.01 (0.97-1.05)	0.65	0.91 (0.82-1.01)	0.07	1.02 (0.92-1.12)	0.76	1.02 (0.97-1.07)	0.42	1.01 (0.84-1.20)	0.95
Fragility fractures	1	1.02 (0.98-1.07)	0.37	0.87 (0.76-1.00)	0.05	1.10 (0.98-1.24)	0.12	0.99 (0.93-1.05)	0.73	0.86 (0.67-1.10)	0.23
Osteoporosis	1	0.94 (0.90-0.99)	0.01	0.94 (0.83-1.07)	0.34	0.89 (0.78-1.01)	0.08	0.99 (0.93-1.05)	0.73	1.26 (1.03-1.54)	0.02
Rheumatoid arthritis	1	0.96 (0.88-1.04)	0.28	0.94 (0.75-1.17)	0.58	1.00 (0.81-1.25)	0.97	0.89 (0.80-0.99)	0.03	0.96 (0.63-1.44)	0.83
Brain											
Any brain outcome (dementia, delirium, or Parkinson's disease)	1	1.02 (0.97-1.09)	0.43	0.93 (0.79-1.11)	0.43	1.03 (0.87-1.20)	0.76	1.00 (0.92-1.08)	0.91	1.23 (0.94-1.61)	0.13
Dementia	1	1.00 (0.92-1.08)	0.94	0.80 (0.63-1.02)	0.07	0.99 (0.80-1.24)	0.95	1.01 (0.91- 1.12)	0.86	1.10 (0.76-1.60)	0.61
Alzheimer's disease	1	1.08 (0.97-1.20)	0.18	0.86 (0.63-1.21)	0.40	1.20 (0.90-1.59)	0.21	1.02 (0.88-1.17)	0.84	1.02 (0.59-1.76)	0.95

Non-Alzheimer's dementia	1	0.93 (0.83-1.04)	0.20	0.72 (0.50-1.03)	0.07	0.81 (0.57-1.14)	0.22	1.03 (0.89-1.18)	0.73	1.17 (0.71-1.96)	0.54
Delirium	1	1.07 (0.98-1.16)	0.13	1.05 (0.84-1.31)	0.67	1.06 (0.85-1.33)	0.58	1.01 (0.91-1.13)	0.79	1.44 (1.02-2.03)	0.04
Parkinson's disease	1	0.93 (0.80-1.07)	0.29	0.97 (0.66-1.44)	0.89	1.15 (0.79-1.65)	0.47	0.98 (0.81-1.18)	0.84	1.04 (0.52-2.10)	0.91
Pancreas											
T1 or T2 diabetes	1	1.01 (0.97-1.06)	0.54	0.98 (0.86-1.11)	0.72	1.08 (0.96-1.22)	0.20	1.02 (0.96-1.08)	0.59	1.13 (0.90-1.41)	0.28
Infection											
COVID-19	1	1.02 (0.93-1.11)	0.68	1.03 (0.81-1.30)	0.83	1.02 (0.80-1.29)	0.88	1.06 (0.94-1.18)	0.34	1.00 (0.64-1.56)	1.00
Cholecystitis	1	0.98 (0.90-1.08)	0.73	0.92 (0.71-1.19)	0.52	0.98 (0.77-1.24)	0.84	0.99 (0.88-1.11)	0.86	1.49 (1.03-2.16)	0.03
Pneumonia	1	1.00 (0.96-1.05)	0.84	1.02 (0.90-1.17)	0.71	1.05 (0.93-1.20)	0.41	1.03 (0.97-1.10)	0.29	1.02 (0.81-1.29)	0.85
Sepsis	1	0.98 (0.94-1.01)	0.22	0.97 (0.88-1.08)	0.62	1.05 (0.95-1.16)	0.34	1.04 (0.99-1.09)	0.11	1.14 (0.96-1.36)	0.14
LRTI	1	0.95 (0.89-1.01)	0.07	0.92 (0.78-1.09)	0.34	0.93 (0.78-1.09)	0.36	1.04 (0.97-1.12)	0.29	1.14 (0.86-1.51)	0.35
URTI	1	1.12 (0.97-1.29)	0.13	0.86 (0.56-1.33)	0.51	0.84 (0.54-1.30)	0.43	1.12 (0.93-1.34)	0.24	0.29 (0.07-1.17)	0.08
UTI	1	0.97 (0.94-1.01)	0.17	0.99 (0.89-1.10)	0.82	1.02 (0.92-1.13)	0.76	1.03 (0.98-1.08)	0.22	1.17 (0.97-1.40)	0.10
SSTI	1	1.01 (0.95-1.07)	0.81	1.05 (0.90-1.23)	0.54	1.00 (0.85-1.17)	0.98	1.03 (0.95-1.11)	0.52	1.20 (0.91-1.59)	0.19
Cardiovascular											
Arrhythmia	1	1.02 (0.93-1.12)	0.69	0.76 (0.57-1.01)	0.06	1.04 (0.82-1.33)	0.73	0.98 (0.87-1.11)	0.78	1.13 (0.72-1.75)	0.60
Cardiomyopathy	1	0.97 (0.83-1.13)	0.71	0.82 (0.52-1.30)	0.41	1.07 (0.72-1.59)	0.75	1.08 (0.90-1.31)	0.40	0.46 (0.15-1.43)	0.18
CHD	1	0.99 (0.95-1.04)	0.81	1.03 (0.92-1.16)	0.60	1.01 (0.89-1.13)	0.92	1.01 (0.96-1.07)	0.70	0.92 (0.74-1.15)	0.48
Heart failure	1	1.03 (0.97-1.10)	0.28	0.92 (0.77-1.10)	0.36	1.12 (0.95-1.32)	0.17	1.06 (0.98-1.15)	0.15	1.35 (1.03-1.77)	0.03
Mental Health											
Depression	1	0.97 (0.93-1.02)	0.20	1.10 (0.97-1.23)	0.14	1.11 (0.98-1.25)	0.09	1.03 (0.97-1.09)	0.37	0.83 (0.64-1.08)	0.16

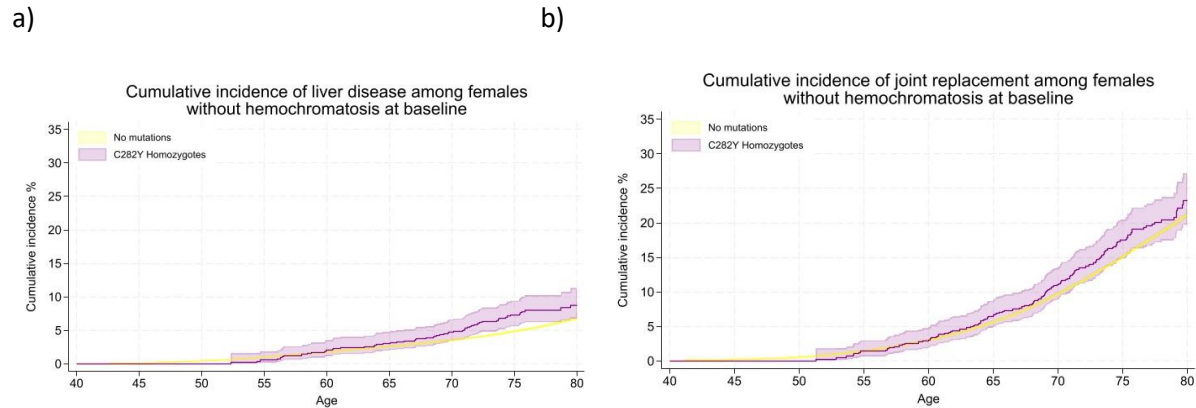
HR (Hazard ratio) compared to those with neither *HFE* mutation. Cox proportional hazards regression models adjusted for age, assessment centre, and genetic principal components 1–10. Abbreviations: CHD, coronary heart disease; T1, type 1; T2, type 2; LRTI, lower respiratory tract infection; URTI, upper respiratory tract infection; UTI, urinary tract infection SSTI, skin and soft tissue infection; CI, confidence interval. Joint replacement surgery variable includes a diagnosis of hip, knee, ankle, or shoulder replacement. Any brain outcome variable includes a diagnosis of dementia, delirium, or Parkinson's disease

eFigure 1. Kaplan-Meier curves for the cumulative incidence of (a) mortality, (b) liver disease, (c) any joint replacement, and (d) any brain outcome, in male *HFE* p.C282Y homozygotes compared to those with no mutations, excluding a diagnosis of hemochromatosis at baseline



Cumulative incidence (estimated % diagnosed by age 80 years; 95% CIs). Joint replacement surgery includes a diagnosis of hip, knee, ankle, or shoulder replacement. Any brain outcome included a diagnosis of delirium, dementia, or Parkinson's disease.

eFigure 2. Kaplan-Meier curves for the cumulative incidence of (a) liver disease, and (b) any joint replacement, in female *HFE* p.C282Y homozygotes compared to those with no mutations, excluding a diagnosis of hemochromatosis at baseline



Cumulative incidence (estimated % diagnosed by age 80 years; 95% CIs). Joint replacement surgery includes a diagnosis of hip, knee, ankle, or shoulder replacement.