

Supplementary Materials for

CRISPR-based editing strategies to rectify *EYA1* complex genomic rearrangement linked to haploinsufficiency

Yi Hwalin, Yejin Yun, Won Hoon Choi, Hye-Yeon Hwang, Ju Hyuen Cha, Heeyoung Seok, Jae-Jin Song, Jun Ho Lee, Seung Ha Oh, Sang-Yeon Lee*, Daesik Kim*

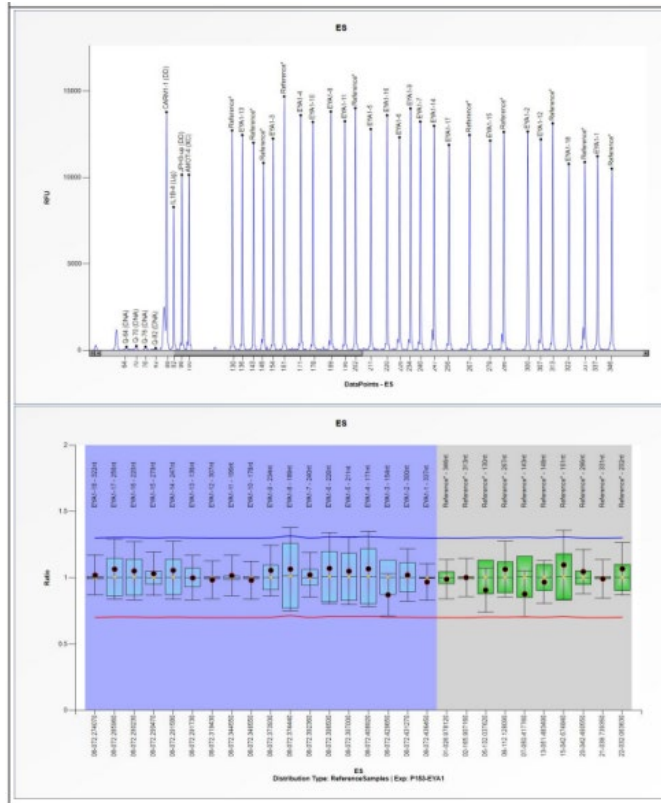
Correspondence to: dskim89@skku.edu (Daesik Kim), maru4843@hanmail.net (Sang-Yeon Lee)

This PDF file includes:

Supplementary Figures 1-3

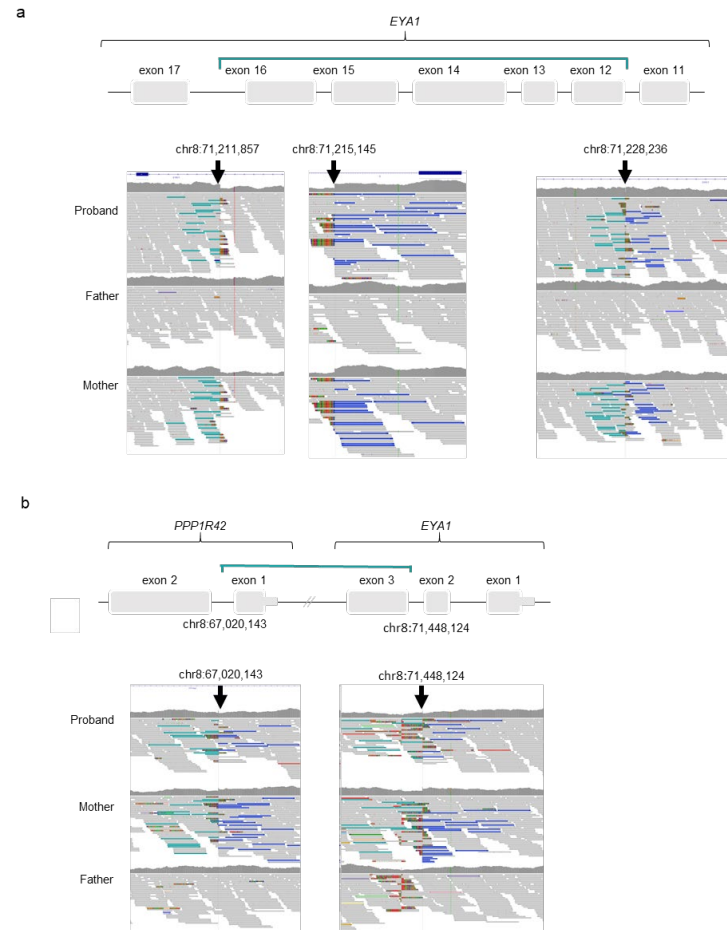
Supplementary Tables 1-5

Supplementary Figure 1. Normal *EYA1* copy number state identified through MLPA.



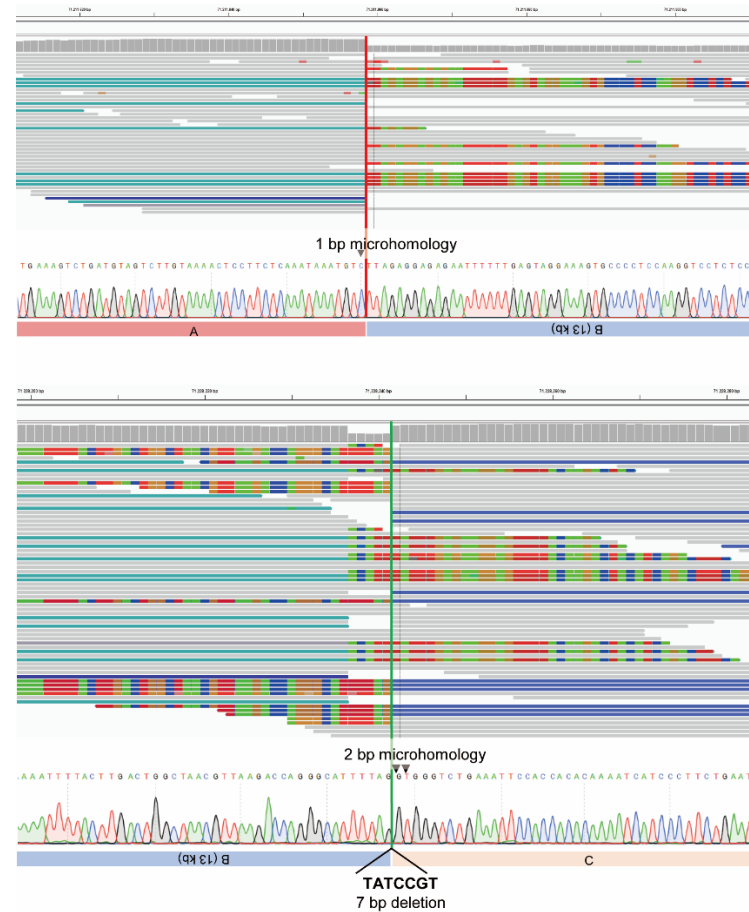
D [nt]	Gene-Exon	Chr.band	hg18 loc.	Height	Area	Ratio [#]	Stdev	[REF]	Width	d[nt]	[Mut details]
322	EYA1-18	08q13.3	08-072.274070	10785	96529	1.02	0.08	=	59	0.0	-
256	EYA1-17	08q13.3	08-072.285960	11885	96619	1.06	0.11	=	55	0.0	-
220	EYA1-16	08q13.3	08-072.290230	13600	104863	1.05	0.11	=	52	0.1	-
279	EYA1-15	08q13.3	08-072.290470	12134	102378	1.03	0.08	=	60	0.1	-
247	EYA1-14	08q13.3	08-072.291580	12985	100330	1.06	0.11	=	29	0.0	-
136	EYA1-13	08q13.3	08-072.291730	12457	91836	1	0.08	=	68	0.0	-
307	EYA1-12	08q13.3	08-072.319430	12210	107088	0.98	0.07	=	69	0.1	-
196	EYA1-11	08q13.3	08-072.344550	13254	95780	1.02	0.08	=	30	0.1	-
178	EYA1-10	08q13.3	08-072.346550	13211	97845	0.98	0.07	=	71	0.0	-
234	EYA1-9	08q13.3	08-072.373930	13998	114731	1.06	0.1	=	66	0.0	-
189	EYA1-8	08q13.3	08-072.374440	13820	105034	1.07	0.16	=	51	0.0	-
240	EYA1-7	08q13.3	08-072.392360	13232	106704	1.02	0.08	=	57	0.0	-
226	EYA1-6	08q13.3	08-072.396500	12327	94592	1.07	0.13	=	37	0.0	-
211	EYA1-5	08q13.3	08-072.397000	12804	97041	1.05	0.13	=	43	0.0	-
171	EYA1-4	08q13.3	08-072.408920	13605	100138	1.07	0.14	=	45	0.0	-
154	EYA1-3	08q13.3	08-072.429650	12252	91316	0.87	0.08	=	63	0.0	-
300	EYA1-2	08q13.3	08-072.431270	12657	108309	1.02	0.1	=	55	0.1	-
337	EYA1-1	08q13.3	08-072.436450	11227	104399	0.97	0.07	=	73	0.1	-
346	Reference*	01p36.11	01-026.978120	10515	99392	0.99	0.07	=	80	0.0	-
313	Reference*	02q24.3	02-166.907160	13136	115651	1	0.07	=	57	0.1	-
130	Reference*	05q31.1	05-132.037620	12724	92526	0.97	0.08	=	67	0.1	-
267	Reference*	06q21	06-112.128090	12463	104080	1.06	0.1	=	62	0.0	-
143	Reference*	07p12.2	07-050.417760	12011	89911	0.88	0.09	=	70	0.0	-
148	Reference*	13q14.3	13-051.483490	10847	84259	0.97	0.08	=	57	0.1	-
161	Reference*	15q15.3	15-042.674840	14695	105744	1.1	0.13	=	59	0.0	-
286	Reference*	20q13.12	20-042.490550	12634	103695	1.05	0.08	=	34	0.1	-
331	Reference*	21q22.2	21-038.739350	10891	94758	0.99	0.07	=	29	0.1	-
202	Reference*	22q12.3	22-032.063630	14016	105860	1.07	0.1	=	46	0.0	-
Median value all probe values:				12646	100234	1.02	0.08		57	0.03	

Supplementary Figure 2. WGS-derived IGV snapshots of two novel SVs.



(a) CGRs (inversion with a deletion) where the junctions of three breakpoints were identified. The light green and blue lines show the joining of discordant reads for 3' to 3' and 5' to 5', respectively. (b) Cryptic large inversion where the junctions of two breakpoints were identified. The soft-clipped reads (light green and blue lines) exhibit a read pair overlaps with the inverted region.

Supplementary Figure 3. Identification of two neo-junctional reads with microhomology.



Two neo-junctional reads were validated with Sanger sequencing: one exhibiting 1 base pair (bp) of microhomology (junction A-B, position g.71215145) and the other showing 2 bp of microhomology (junction B-C, position g.71228236).

Supplementary Table 1. List of primers employed to verify the locations of breakpoint junctions

Sample	Target	Primer Name	Primer sequence (5'-3')
EYA1 wild-type	A-B	EYA1_F1	GTT CTA GCA AGA AAA CGC A
EYA1 wild-type	A-B	EYA1_R1	ACA AGA ATA ATT TAA CCA ATT TGC
EYA1 wild-type	B-C	EYA1_F2	TAG AGT TGT TTC ATT TCT AC
EYA1 wild-type	B-C	EYA1_R2	ACT GGA TTT AGA CGT AAG AG
EYA1 complex SV	A-B inv	MUT-AB-F	CCA CTT GGG TTG TAT GTG CC
EYA1 complex SV	A-B inv	MUT-AB-R	GCC ATT ACA TGT CTA TAG ATT CA
EYA1 complex SV	B inv-C	MUT-BC-F	ACC AAT TTG CAA AAC TGG A
EYA1 complex SV	B inv-C	MUT-BC-R	CAT AGT GCA GTT CAC AC

Supplementary Table 2. List of primers employed to verify the locations of breakpoint junctions

Sample	Target	Primer Name	Primer sequence (5'-3')
SNUH	A-B	67,020,143_WT_F	TCAGAACACATGGTGTGAAAACCT
SNUH	A-B	67,020,143_WT_R	TGGATTATGTTGCCTCTTTGTGG
SNUH	B-C	71,448,124_WT_F	TCAGGATGGAGGTTGCTGAA
SNUH	B-C	71,448,124_WT_R	GCGAGAAGTCCTATTGTGCAT
SNUH	A-B inv	67,020,143_Mut_F	GTCTCTTGGCTCCTTTTCCCA
SNUH	A-B inv	67,020,143_Mut_R	TGAAGGTTGGGATGGCTGTG
SNUH	B inv-C	71,448,124_Mut_F	TGGATTATGTTGCCTCTTTGTGG
SNUH	B inv-C	71,448,124_Mut_R	TGCGAGAAGTCCTATTGTGC

Supplementary Table 3. List of primers employed to verify the locations of breakpoint junctions

Sample	Target	Primer Name	Primer sequence (5'-3')
WT	A-B	EYA1_C_F	ACGCCAACAGATATGGGAGG
Mut			
T1/T2 edited		EYA1_B_R	TGTAGCGGAAGGCCAACTTT
T1/T3 edited			

Supplementary Table 4. In-house database of BOR/BO syndrome caused by *EYA1* variants

Sex/Age	Gene	Variant	Branchial anomalies	Preauricular pits	Hearing loss (Type)	Renal anomalies	External	Middle	Inner	EVA	Typical vs. Atypical ^a
F/16-20	<i>EYA1</i>	c.1319G>A;p.Arg440Gln									Typical
M/16-20	<i>EYA1</i>	c.1220G>A;p.Arg407Gln									Typical
F/6-10	<i>EYA1</i>	c.1081C>T;p.Arg361Ter									Typical
M/6-10	<i>EYA1</i>	c.1081C>T;p.Arg361Ter									Typical
M/6-10	<i>EYA1</i>	c.1276G>A;p.Gly426Ser									Atypical
M/6-10	<i>EYA1</i>	c.1276G>A;p.Gly426Ser									Atypical
F/11-15	<i>EYA1</i>	Deletion									Typical
M/6-10	<i>EYA1</i>	c.1081C>T;p.Arg361Ter									Typical
F/21-25	<i>EYA1</i>	Inversion reciprocal with deletion									Typical
F/51-55	<i>EYA1</i>	Inversion reciprocal with deletion									Atypical
F/26-30	<i>EYA1</i>	Inversion reciprocal with deletion									Typical
M/31-35	<i>EYA1</i>	Inversion reciprocal with deletion									Typical
M/31-35	<i>EYA1</i>	c.1623_1626dup;p.Gln543AsnfsTer90									Typical
M/21-25	<i>EYA1</i>	c.1360G>T;p.Gly454Cys									Typical
F/6-10	<i>EYA1</i>	c.1117_1118delCA;p.His373PhefsTer4									Typical
F/0-5	<i>EYA1</i>	<i>EYA1</i> large genomic inversion									Typical
M/41-45	<i>EYA1</i>	<i>EYA1</i> large genomic inversion									Typical

EYA1, canonical transcript NM_000503.6

Abbreviations: F, female; M, male; SNHL, sensorineural hearing loss; MHL, mixed hearing loss; EVA, enlarged vestibular aqueducts; N/A, not available.

^aNote, if the note doesn't satisfy the standard criteria for BOR/BO syndrome (at least three major criteria or two major and two minor criteria), it can be classified as atypical BOR/BO syndrome

Supplementary Table 5. Disease-causing *EYA1* variants associated with BOR/BO syndrome (pathogenic or likely pathogenic in ClinVar database)

No	Genomic Position (GRCh37/hg19)	HGVS		Location (Exon/Domain)	ClinVar	Molecular Consequence
		Nucleotide	Protein			
1	Chr8:72234477-G-A	c.229C>T	p.Arg77Ter	Exon 5 / Region:Disordered (1 - 95)	Pathogenic (PMID18220287)	Nonsense
2	Chr8:72234032-G-A	c.355C>T	p.Gln119Ter	Exon 6 / Absent	Pathogenic (PMID18220287)	Nonsense
3	Chr8:72233981- TGCCGTACG-T	c.398_405del	p.Pro133HisfsTer14	Exon 6 / Absent	Pathogenic (PMID9359046)	Frameshift
4	Chr8:72233985-G-C	c.402C>G	p.Tyr134Ter	Exon 6 / Absent	Pathogenic (PMID21280147)	Nonsense
5	Chr8:72229877-G-A	c.466C>T	p.Gln156Ter	Exon 7 / Absent	Pathogenic (PMID22447252)	Nonsense
6	Chr8:72229853-G-GA	c.489dup	p.Leu164SerfsTer24	Exon 7 / Absent	Pathogenic (PMID10991693)	Frameshift
7	Chr8:72229852-A-AG	c.490dup	p.Leu164ProfsTer24	Exon 7 / Absent	Pathogenic (PMID18220287)	Frameshift
8	Chr8:7229810-GC-G	c.532del	p.Ala178HisfsTer63	Exon 7 / Absent	Pathogenic (PMID18220287)	Frameshift
9	Chr8:72211317-72226125	g.(?_72211317)_(72226125_?)del	g.(?_72211317)_(72226125_?)del	Intron 7	Pathogenic (PMID21280147)	SV
10	Chr8:72211910-G-C	c.602C>G	p.Ser201Ter	Exon 8 / Absent	Pathogenic (PMID18220287)	Nonsense
11	Chr8:72211875-G-A	c.637C>T	p.Gln213Ter	Exon 8 / Absent	Pathogenic (PMID18220287)	Nonsense
12	Chr8:72211872-C-T	c.639+1G>A	p.?	Intron 8	Pathogenic (PMID18220287)	Splicing
13	Chr8:72211454-A-C	c.654T>G	p.Tyr218Ter	Exon 9 / Absent	Pathogenic (PMID19206155)	Nonsense

14	Chr8:72211410-72211483	c.640-15_698del	p.?	Exon 9 / Absent	Pathogenic (PMID18220287)	Splicing
15	Chr8:72211430-G-C	c.678C>G	p.Tyr226Ter	Exon 9 / Absent	Pathogenic (PMID18220287)	Nonsense
16	Chr8:72211333-G-A	c.775C>T	p.Gln259Ter	Exon 9 / Region:Disordered (240 - 320)	Pathogenic (PMID18220287)	Nonsense
17	Chr8:72211325CG-C	c.782del	p.Pro261ArgfsTer105	Exon 9 / Region:Disordered (240 - 320)	Pathogenic (PMID18220287)	Frameshift
18	Chr8:72211301-TG-T	c.806del	p.Ala269fsTer97	Exon 9 / Region:Disordered (240 - 320)	Pathogenic (PMID18220287)	Frameshift
19	Chr8:72211281-C-T	c.826+1G>A	p.?	Intron 9	Likely Pathogenic (PMID18220287)	Splicing
20	Chr8:72156818-72234523	g.(?_72156818)_ (72234523_?) del	g.(?_72156818)_ (72234523_?) del	Intron 9	Pathogenic (PMID18220287)	SV
21	Chr8:72111555-72268741	g.(?_72111555)_ (72268741_?) del	g.(?_72111555)_ (72268741_?) del	Intron 9	Pathogenic (PMID18220287)	SV
22	Chr8:72111499-72268758	g.(?_72111499)_ (72268758_?) del	g.(?_72111499)_ (72268758_?) del	Intron 9	Pathogenic (PMID25135225)	SV
23	Chr8:72111575-72267140	g.(?_72111575)_ (72267140_?) del	g.(?_72111575)_ (72267140_?) del	Intron 9	Pathogenic (PMID31427586)	SV
24	Chr8:72184079-G-A	c.880C>T	p.Arg294Ter	Exon 10 / Region:Disordered (240 - 320)	Pathogenic (PMID35982127)	Nonsense
25	Chr8:72184070-G-A	c.889C>T	p.Arg297Ter	Exon 10 / Region:Disordered (240 - 320)	Pathogenic (PMID18220287)	Nonsense
26	Chr8:72184037-G-A	c.922C>T	p.Arg308Ter	Exon 10 / Region:Disordered (240 - 320)	Pathogenic (PMID29500469)	Nonsense
27	Chr8:72184029-GT-G	c.929del	p.Asn310ThrfsTer56	Exon 10 / Region:Disordered (240 - 320)	Pathogenic (PMID33532864)	Frameshift

28	Chr8:72184009-TG-T	c.950del	p.Pro317GlnfsTer49	Exon 10 / Region:Disordered (240 - 320)	Pathogenic (PMID18220287)	Frameshift
29	Chr8:72183992-C-G	c.966+1G>C	p.?	Intron 10	Likely Pathogenic (PMID30655312)	Splicing
30	Chr8:72183988-C-T	c.966+5G>A	p.?	Intron 10	Pathogenic (PMID27657687)	Splicing
31	Chr8:72181955-72184152	g.(?_72181955)_(72184152_?) del	g.(?_72181955)_(72184152_?)del	Intron 10	Pathogenic (PMID18220287)	SV
32	Chr8:72182051-A-AAC	c.972_973dup	p.Phe325CysfsTer42	Exon 11 / Absent	Pathogenic (PMID9359046)	Frameshift
33	Chr8:72181955-72182078	g.(?_72181955)_(72182078_?) del	g.(?_72181955)_(72182078_?)del	Exon 11 / Absent	Pathogenic (PMID19206155)	SV
34	Chr8:72182008-CAAGG-C	c.1013_1016del	p.Ser338CysfsTer27	Exon 11 / Absent	Pathogenic (PMID18220287)	Frameshift
35	Chr8:72181981-A-C	c.1044T>G	p.Tyr348Ter	Exon 11 / Absent	Pathogenic (PMID18220287)	Nonsense
36	Chr8:72181974-C-A	c.1050+1G>T	p.?	Intron 11	Pathogenic (PMID18220287)	Splicing
37	Chr8:72181971-T-C	c.1050+4A>G	p.?	Intron 11	Pathogenic (PMID17576681)	Splicing
38	Chr8:72111575-72246429	g.(?_72111575)_(72246429_?) del	g.(?_72111575)_(72246429_?)del	Intron 11	Pathogenic (PMID28832562)	SV
39	Chr8:72156929-T-C	c.1051-2A>G	p.?	Intron 11	Pathogenic (PMID21280147)	Splicing
40	Chr8:72156897-G-A	c.1081C>T	p.Arg361Ter	Exon 12 / Absent	Pathogenic (PMID26969326)	Nonsense
41	Chr8:72156893-AT-A	c.1084del	p.Met362TrpfsTer4	Exon 12 / Absent	Pathogenic (PMID18220287)	Frameshift
42	Chr8:72156891-C-T	c.1087G>A	p.Glu363Lys	Exon 12 / Absent	Pathogenic (PMID10655545)	Missense

43	Chr8:72156818-72156947	g.(?_72156818)_(72156947_?)del	g.(?_72156818)_(72156947_?)del	Exon 12 / Absent	Pathogenic (PMID30937553)	SV
44	Chr8:72156837-C-A	c.1140+1G>T	p.?	Intron 12	Pathogenic (PMID23840632)	Splicing
45	Chr8:72129216-T-TA	c.1182dup	p.Asn395Ter	Exon 13 / Absent	Pathogenic (PMID18220287)	Nonsense
46	Chr8:72129213-C-A	c.1186G>T	p.Gly396Ter	Exon 13 / Absent	Pathogenic (PMID18220287)	Nonsense
47	Chr8:72129198-A-T	c.1199+2T>A	p.?	Intron 13	Likely Pathogenic (PMID18220287)	Splicing
48	Chr8:72129088-C-T	c.1200-1G>A	p.?	Intron 13	Pathogenic (PMID18220287)	Splicing
49	Chr8:72129050-C-CT	c.1236dup	p.Ala413SerfsTer5	Exon 14 / Absent	Pathogenic (PMID18220287)	Frameshift
50	Chr8:72129038-T-TA	c.1248dup	p.Asn417Ter	Exon 14 / Absent	Pathogenic (PMID18220287)	Nonsense
51	Chr8:72129014-G-GT	c.1272dup	p.Arg425ThrfsTer27	Exon 14 / Absent	Pathogenic (PMID18220287)	Frameshift
52	Chr8:72128978-G-A	c.1309C>T	p.Arg437Cys	Exon 14 / Absent	Likely Pathogenic (PMID34031707)	Missense
53	Chr8:72128972-CT-C	c.1315del	p.Arg439AspfsTer3	Exon 14 / Absent	Pathogenic (PMID18220287)	Frameshift
54	Chr8:72128968-C-T	c.1319G>A	p.Arg440Gln	Exon 14 / Absent	Pathogenic (PMID30655312)	Missense
55	Chr8:72128960-CTT-C	c.1325_1326del	p.Lys442ArgfsTer9	Exon 14 / Absent	Pathogenic (PMID19206155)	Frameshift
56	Chr8:72128956-ATC-A	c.1329_1330del	p.Glu443AspfsTer8	Exon 14 / Absent	Pathogenic (PMID18220287)	Frameshift
57	Chr8:72128937-A-GG	c.1350delinsCC	p.Asn451GlnfsTer10	Exon 14 / Absent	Pathogenic (PMID9020840)	Frameshift

58	Chr8:72127965-T-C	c.1361-2A>G	p.?	Intron 14	Pathogenic (PMID18220287)	Splicing
59	Chr8:72127964-C-T	c.1361-1G>A	p.?	Intron 14	Likely Pathogenic (PMID18220287)	Splicing
60	Chr8:72127916-C-A	c.1408G>T	p.Glu470Ter	Exon 15 / Absent	Pathogenic (PMID25741868)	Nonsense
61	Chr8:72127902-CAGGG-C	c.1418_1421del	p.Ala473GlyfsTer6	Exon 15 / Absent	Pathogenic (PMID18220287)	Frameshift
62	Chr8:72127891-C-T	c.1433G>A	p.Trp478Ter	Exon 15 / Absent	Pathogenic (PMID18220287)	Nonsense
63	Chr8:72127865-A-G	c.1459T>C	p.Ser487Pro	Exon 15 / Absent	Pathogenic (PMID9361030)	Missense
64	Chr8:72127848-C-G	c.1475+1G>C	p.?	Intron 15	Pathogenic (PMID23506628)	Splicing
65	Chr8:72127745-T-A	c.1476-2A>T	p.?	Intron 15	Pathogenic (PMID21280147)	Splicing
66	Chr8:72127730-TCA-T	c.1487_1488del	p.Val496GlufsTer35	Exon 16 / Absent	Pathogenic (PMID18220287)	Frameshift
67	Chr8:72127719-TACTA-T	c.1496_1499del	p.Leu499Ter	Exon 16 / Absent	Pathogenic (PMID35005812)	Nonsense
68	Chr8:72127711-GTAGTTGT-G	c.1501_1507del	p.Thr501LeufsTer15	Exon 16 / Absent	Pathogenic (PMID15493068)	Frameshift
69	Chr8:72127705-A-C	c.1514T>G	p.Leu505Arg	Exon 16 / Absent	Pathogenic (PMID9361030)	Missense
70	Chr8:72127674-A-T	c.1545T>A	p.Tyr515Ter	Exon 16 / Absent	Pathogenic (PMID18220287)	Nonsense
71	Chr8:72127648-T-TTA	c.1570_1571insTA	p.Glu524ValfsTer10	Exon 16 / Absent	Pathogenic (PMID18220287)	Frameshift
72	Chr8:72127640-A-T	c.1579T>A	p.Tys527Asn	Exon 16 / Absent	Likely Pathogenic (PMID23435380)	Missense

73	Chr8:72127621-C-A	c.1597+1G>T	p.?	Intron 16	Likely Pathogenic (PMID18220287)	Splicing
74	Chr8:72123493-T-C	c.1598-2A>G	p.?	Intron 16	Pathogenic (PMID23840632)	Splicing
75	Chr8:72123492-C-G	c.1598-1G>C	p.?	Intron 16	Pathogenic (PMID18220287)	Splicing
76	Chr8:72123462-G-A	c.1627C>T	p.Gln543Ter	Exon17 / Absent	Pathogenic (PMID34160378)	Nonsense
77	Chr8:72123450-T-C	c.1639A>G	p.Arg547Gly	Exon17 / Absent	Pathogenic (PMID10655545)	Missense
78	Chr8:72123444-CT-C	c.1644del	p.Val549TrpfsTer6	Exon17 / Absent	Pathogenic (PMID18220287)	Frameshift
79	Chr8:72123371-72123511	g.(?_72123371)_(72123511_?)del	g.(?_72123371)_(72123511_?)del	Exon17 / Absent	Pathogenic (PMID29500469)	SV
80	Chr8:72109607-72123547	c.(?_1598-56)_(*1968_?)del	c.(?_1598-56)_(*1968_?)del	Intron 17	Pathogenic (PMID23851940)	SV
81	Chr8-72111606-A-G	c.1748T>C	p.Leu583Pro	Exon 18 / Absent	Likely Pathogenic (PMID31049720)	Missense