

Original Research

Correlation between umbilical cord torsion and Doppler parameters of umbilical artery: a single-center retrospective case-control study

Yuan Li¹, Dirong Zhang^{1*}, Yu Shi^{1,2}

1. Department of Ultrasound, Peking University Shenzhen Hospital, Shenzhen, Guangdong, 518036, China.

2. Shenzhen Key Laboratory for Drug Addiction and Medication Safety, The Hong Kong University of Science and Technology Medical Center, Shenzhen, Guangdong, 518036, China.

*Correspondence: zhangdi1616@126.com (Dirong Zhang)

Availability of Data and Materials

The dataset generated and/or analysed during the study are available from the corresponding author on reasonable request.

Author Contributions

These should be presented as follows: Yuan Li and Dirong Zhang designed the research study. Yuan Li performed the research. Yu Shi provided help and advice on statistics. Yuan Li analyzed the data. Yuan Li and Dirong Zhang wrote the manuscript. All authors contributed to editorial changes in the manuscript. All authors read and approved the final manuscript.

Ethics Approval and Consent to Participate

This study passed the exemption of informed consent in Peking University Shenzhen Hospital. (ethics number:2022 NO.010)

Acknowledgment

Not applicable.

Funding

This research was funded by Shenzhen Key Medical Discipline Construction Fund (No. SZXK051), Sanming Project of Medicine in Shenzhen (No. SZSM202111011) and Shenzhen Development and Reform Commission (No. XMHT20190104001).

Conflict of Interest

The authors declare no conflict of interest.

NOTE: This preprint reports new research that has not been certified by peer review and should not be used to guide clinical practice.

Correlation between umbilical cord torsion and Doppler parameters of umbilical artery: a single-center retrospective case-control study

Abstract

Objective:To explore the correlation between umbilical cord torsion and the changes of umbilical artery Doppler parameters, to provide valuable information for prenatal ultrasound screening of umbilical cord torsion, and to explore the possible mechanism of umbilical artery Doppler parameters changes during umbilical cord torsion.

Method:The subjects were 962 pregnant women who were discharged from our hospital from January 2015 to November 2021 and were eligible for inclusion (415 in the case group and 547 in the control group). The measurement data of umbilical artery Doppler parameters (PSV, S/D, RI, PI) were collected from 21 to 40 weeks of gestation, and the differences among the above parameters were statistically analyzed.

Results:The peak systolic velocity (PSV) of umbilical artery is positively correlated with gestational age, while the Doppler resistance parameters (S/D, RI, PI) of umbilical artery are negatively correlated with gestational age. The mean values of umbilical artery Doppler parameters (PSV, S/D, RI, PI) in the case group were significantly lower than those in the control group of the same pregnancy age ($P < 0.05$).

Conclusion: The decrease of Doppler parameters of umbilical artery in late pregnancy is significantly related to umbilical cord torsion, which may be a clue for prenatal ultrasound screening of umbilical cord torsion. The Doppler parameters of umbilical artery during umbilical cord torsion are consistent with the basic principle of Doppler parameters change after vascular stenosis in other parts of the human body. It is necessary to conduct multicenter prospective study in the future.

Keywords

Prenatal ultrasound assessment, Cord torsion, Umbilical artery, Color Doppler ultrasound

1. Introduction

The umbilical cord is very important for the normal development, survival and health of the fetus after birth. The proper helix of umbilical cord and its tissue structure provide some pressure protection for umbilical vessels^[1-2]. The physiological torsion of umbilical cord can reach 6-11 weeks, and the torsion of umbilical cord can be more than 12 weeks^[3]. Torsion of umbilical cord may lead to fetal growth restriction, premature delivery, meconium contamination of amniotic fluid, and even stillbirth^[4-8]. Umbilical cord torsion as one of the causes of perinatal fetal death^[9]. Prenatal ultrasound has been exploring the ultrasonic manifestation of umbilical cord torsion, but no consensus has been reached^[10,11]. At present, there is no study on the relationship between umbilical cord torsion and the changes of umbilical artery Doppler parameters. The purpose of this study is to explore the correlation between umbilical cord torsion and the changes of umbilical artery Doppler parameters, to provide valuable information for prenatal ultrasound screening of umbilical cord torsion, and to explore the possible mechanism of umbilical artery Doppler parameters changes during umbilical cord torsion.

2. Materials and Methods

This study is a retrospective pathological control study. Pregnant women who underwent routine prenatal ultrasound examination and hospital delivery in our hospital from January 2015 to November 2021 were randomly collected.

Inclusion criteria:

1. Pregnant women who give birth in our hospital have definite discharge diagnosis or pathological diagnosis of placental appendages;

44 2.Low-risk pregnancy, including no pregnancy complications or major underlying diseases, such as gestational
45 hypertension, gestational diabetes, placental previa, placental abruptio, etc.;

46 3.There is a record of prenatal ultrasound examination in our hospital, and the Doppler parameters of
47 umbilical artery are measured in the free segment of umbilical cord during the examination;

48 4.Singleton pregnancy.

49 Exclusion criteria:

50 1.Severe fetal malformations or chromosome abnormalities;

51 2.Pregnant women with single umbilical cord artery or other abnormal umbilical cord blood vessels;

52 3.Stillbirth or induced labor due to other reasons.

53 Gestational age was calculated based on last menstrual period.If the last menstrual period is unclear, it is
54 calculated and recorded according to the NT cycle after correcting the gestational age.Obstetricians diagnosed the
55 umbilical cord after delivery, and defined those who were discharged as having umbilical cord torsion as the case
56 group, and those who were diagnosed as having no umbilical cord torsion were randomly selected as the control
57 group.The ethics committee of our hospital agreed to waive informed consent for this study.

58 The ultrasonic instrument uses GE and Mindray color Doppler ultrasound diagnostic machine and the probe
59 frequency is 4~8MHz.The free umbilical cord floating in the amniotic fluid was measured by Doppler, and the
60 measurement Angle was as parallel as possible to the direction of umbilical cord blood flow. Umbilical artery
61 Doppler blood flow parameters, including peak systolic velocity (PSV), umbilical artery blood systolic/diastolic
62 ratio (S/D), resistance index (RI) and pulse index (PI), were extracted from the workstation at each gestational
63 week from 21 to 40 weeks.

64 SPSS26.0 statistical software was used for data processing:1. All umbilical artery Doppler blood flow
65 parameters in the case group and the control group at 21-40 weeks gestation were counted according to gestational
66 age.The mean of each gestational age measurement data in the two groups was calculated; 2. The change trend of
67 umbilical artery blood flow parameters with gestational week was analyzed.3. Logistic regression analysis was
68 performed on the umbilical artery blood flow parameters of the case group and the control group of the same
69 gestational age, $P < 0.05$, indicating significant differences between the two variables.Regression analysis fills in
70 the missing values.

72 3. Results

73 This study included 1608 pregnant women who delivered in our hospital (666 in the case group and 942 in the
74 control group).According to the inclusion exclusion criteria, 646 pregnant women (251 in the case group and 395 in
75 the control group) were excluded, and 415 pregnant women in the case group and 547 pregnant women in the
76 control group were finally included.Pregnant women ranged in age from 21 to 44 years, with a mean age of 31
77 years ($P > 0.05$). A total of 4215 umbilical artery Doppler flow parameters were collected in the case group (1676
78 in the case group and 2543 in the control group), of which basically each included the peak rate of umbilical artery
79 contraction (PSV) and the umbilical artery flow resistance parameters (S/D), and some of them lacked the
80 resistance parameters RI (19) and PI (75) in the umbilical artery group. The average values of umbilical artery
81 Doppler parameters in the case group and the control group at different gestational ages were shown in Table 1,
82 indicating that the average values of PSV, S/D, RI and PI of umbilical artery in the case group were lower than
83 those in the control group at different gestational ages.

84 The correlation analysis of umbilical artery flow parameters (PSV, S/D, RI, PI) and gestational age in case
85 group and control group respectively showed that the peak velocity of umbilical artery contraction (PSV) was
86 positively correlated with gestational age in both groups, while the correlation parameters of umbilical artery
87 Doppler resistance (S/D, RI, PI) were negatively correlated with gestational age in both groups ($R_{PSV} 0.374$ vs
88 0.538 , $R_{S/D} 0.617$ vs 0.619 , $R_{RI} 0.616$ vs 0.563 , $R_{PI} 0.602$ vs 0.622 , $P > 0.05$).

89 After filling in the missing values by regression analysis, Logistic regression analysis showed that:In weeks
90 22-27, the umbilical artery Doppler parameters of both the case group and the control group were greater than 0.05
91 in umbilical cord torsion, while in weeks 28-40, the weekly umbilical artery Doppler parameters were less than
92 0.05, with statistical significance, as shown in Table 2.

93

Table 1 Mean values of umbilical artery PSV, S/D, RI and PI between case groups and control groups at different gestational weeks

GA	Number		S/D		RI		PI		PSV	
	Case group	Control group	Case group	Control group	Case group	Control group	Case group	Control group	Case group	Control group
21	33	94	3.09	3.43	0.66	0.70	1.07	1.18	33.22	35.1
22	102	183	3.17	3.21	0.67	0.68	1.1	1.11	35.38	35.06
23	82	95	3.05	3.14	0.66	0.67	1.07	1.09	35.66	36.45
24	25	37	2.92	3.06	0.65	0.66	1.04	1.09	36.04	36.62
25	9	51	2.6	2.99	0.62	0.65	0.91	1.03	37.18	40.81
26	10	54	2.61	2.95	0.60	0.65	0.93	1.03	44.48	42.49
27	17	28	2.44	2.77	0.58	0.62	0.86	0.96	37.99	42.61
28	35	49	2.46	2.73	0.59	0.62	0.85	0.96	41.2	45.01
29	47	80	2.45	2.67	0.58	0.61	0.86	0.92	42.33	46.14
30	101	172	2.39	2.64	0.57	0.60	0.85	0.91	44.84	47.01
31	111	153	2.4	2.57	0.57	0.60	0.84	0.89	43.47	47.09
32	97	132	2.36	2.54	0.56	0.59	0.82	0.89	42.81	47.79
33	50	71	2.27	2.44	0.54	0.58	0.81	0.87	41.36	48.74
34	47	60	2.12	2.43	0.52	0.57	0.73	0.85	44.08	49.16
35	54	69	2.18	2.39	0.53	0.56	0.76	0.85	45.76	49.64
36	128	212	2.14	2.31	0.52	0.55	0.75	0.83	46.91	50.3
37	243	321	2.13	2.27	0.52	0.54	0.75	0.8	46.38	50.58
38	183	279	2.11	2.25	0.52	0.54	0.73	0.8	46.59	50.78
39	202	293	2.07	2.2	0.50	0.53	0.73	0.78	45.79	51
40	96	110	2.06	2.17	0.50	0.53	0.72	0.78	47.16	51.13

GA: gestational age; PSV: peak systolic velocity; S/D: systolic/diastolic ratio; RI: resistance index; PI: pulsatility index

Table 2 Logistic regression analysis of S/D, RI, PI and PSV of umbilical artery between the case group and the control group at 21-40 weeks of gestation

GA	S/D		RI		PI		PSV	
	OR(95%CI)	P-value	OR(95%CI)	P-value	OR(95%CI)	P-value	OR(95%CI)	P-value
21	0.324(0.139-0.753)	0.009	0.000(0.000-0.030)	0.005	0.016(0.001-0.246)	0.003	0.944(0.877-1.015)	0.120
22	0.815(0.520-1.277)	0.372	2.725(0.054-137.377)	0.616	0.886(0.183-4.292)	0.881	1.010(0.970-1.051)	0.631
23	0.768(0.461-1.277)	0.308	0.191(0.002-20.673)	0.489	0.287(0.043-1.920)	0.198	0.981(0.941-1.023)	0.378
24	0.721(0.338-1.539)	0.397	0.045(0.000-39.299)	0.370	0.212(0.011-4.122)	0.306	0.985(0.912-1.065)	0.705
25	0.234(0.044-1.256)	0.900	0.000(0.000-27.335)	0.158	0.008(0.000-1.839)	0.820	0.913(0.803-1.037)	0.161
26	0.210(0.043-1.024)	0.054	0.000(0.000-1.847)	0.065	0.012(0.000-1.224)	0.061	1.048(0.938-1.170)	0.405
27	0.194(0.037-1.004)	0.051	0.000(0.000-1.335)	0.057	0.012(0.000-1.344)	0.066	0.909(0.819-1.009)	0.074
28	0.248(0.082-0.746)	0.013	0.001(0.000-0.587)	0.034	0.036(0.002-0.589)	0.020	0.927(0.868-0.989)	0.021
29	0.276(0.109-0.701)	0.007	0.002(0.000-0.580)	0.031	0.065(0.005-0.920)	0.043	0.952(0.910-0.996)	0.032
30	0.210(0.101-0.436)	0.000	0.000(0.000-0.016)	0.000	0.046(0.008-0.277)	0.001	0.964(0.932-0.997)	0.034
31	0.355(0.185-0.680)	0.002	0.005(0.000-0.206)	0.005	0.141(0.024-0.842)	0.032	0.942(0.911-0.975)	0.001
32	0.354(0.178-0.705)	0.003	0.005(0.000-0.264)	0.009	0.112(0.019-0.673)	0.017	0.928(0.895-0.962)	0.000
33	0.345(0.129-0.927)	0.035	0.002(0.000-0.430)	0.024	0.057(0.005-0.690)	0.024	0.887(0.838-0.938)	0.000
34	0.085(0.023-0.311)	0.000	0.000(0.000-0.025)	0.001	0.009(0.001-0.145)	0.001	0.945(0.903-0.989)	0.014
35	0.262(0.098-0.699)	0.007	0.006(0.000-0.687)	0.034	0.056(0.005-0.598)	0.017	0.955(0.915-0.997)	0.036
36	0.289(0.152-0.550)	0.000	0.011(0.001-0.194)	0.002	0.087(0.020-0.372)	0.001	0.954(0.928-0.980)	0.001
37	0.424(0.262-0.687)	0.000	0.053(0.006-0.495)	0.010	0.230(0.080-0.661)	0.006	0.958(0.940-0.976)	0.000
38	0.378(0.223-0.642)	0.000	0.043(0.004-0.449)	0.009	0.180(0.058-0.557)	0.003	0.949(0.928-0.971)	0.000
39	0.408(0.244-0.682)	0.001	0.038(0.004-0.354)	0.004	0.231(0.079-0.678)	0.008	0.936(0.915-0.958)	0.000
40	0.407(0.177-0.935)	0.034	0.028(0.001-0.876)	0.042	0.097(0.014-0.673)	0.018	0.934(0.991-0.999)	0.011

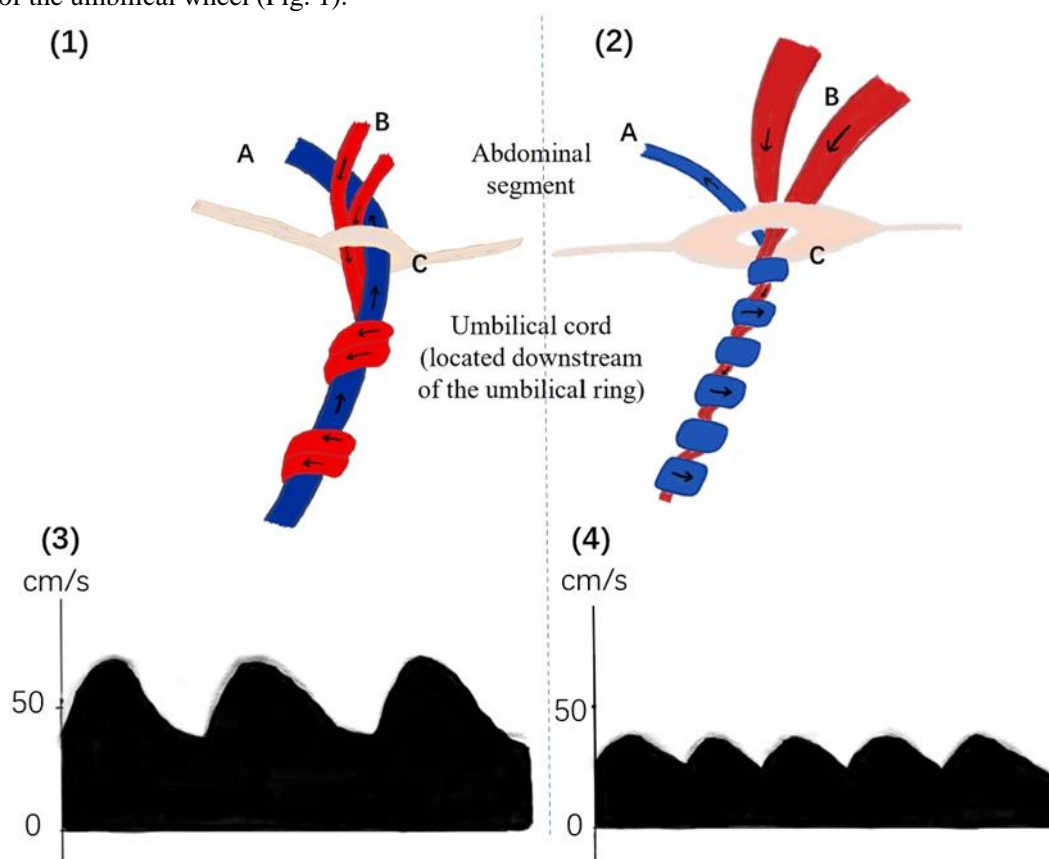
OR, odds ratio; CI, confidence interval; GA, Gestational age; PSV: peak systolic velocity; S/D: systolic/diastolic ratio; RI: resistance index; PI: pulsatility index

96 4. Discussion

97 This was a single-center retrospective case-control study. The results showed that the peak velocity of
98 umbilical artery contraction (PSV) was positively correlated with gestational age in both the case group and the
99 control group, and the values of the umbilical artery Doppler resistance related parameters (S/D, RI, PI) were
100 negatively correlated with gestational age.

101 The results of this study showed that there was no significant difference in the mean value of umbilical artery
102 Doppler parameters between the case group and the control group at 21-27 weeks of pregnancy ($P > 0.05$). The
103 values of umbilical artery Doppler parameters in the 28-40 weeks gestation group were lower than those in the
104 control group, and Logistic regression analysis showed that the difference was significant ($P < 0.05$). We
105 hypothesize that umbilical cord torsion may begin in early or second trimester, and then gradually increase with
106 gestational age. During the second trimester, the protective structure of the umbilical cord gives it some resistance to
107 excessive torsion^[1-2], the changes of umbilical artery blood flow mechanics were not obvious, and the difference of
108 Doppler parameters was not statistically significant. However, with the gradual aggravation of torsion in late
109 pregnancy, the changes of umbilical artery blood flow mechanics were obvious, and the difference of Doppler
110 parameters was statistically significant.

111 When the arteries in other parts of the human body are narrowed, the Doppler changes of the artery blood flow
112 at the distal end of the stenosis are low-speed and low-pulsation changes, forming a "small slow wave"^[12,13]. We
113 believe that the Doppler changes of umbilical artery blood flow during umbilical cord torsion are consistent with
114 the changes of blood flow Doppler changes after arterial stenosis in other parts: because umbilical cord torsion
115 occurs mostly at the umbilical wheel^[3], the umbilical artery at the umbilical wheel is narrowed by the torsion of the
116 umbilical cord, resulting in "small slow wave" changes in the blood flow Doppler of the umbilical artery at the
117 distal end of the umbilical wheel (Fig. 1).

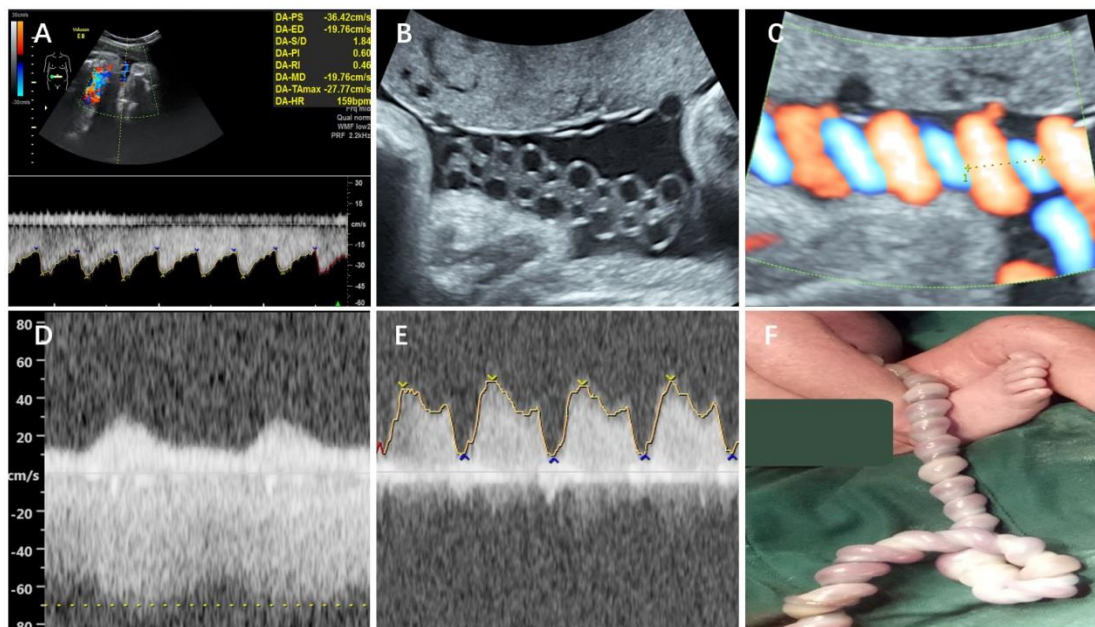


118
119 **Fig. 1. The umbilical cord (located downstream of the umbilical ring).** (1) When the normal umbilical cord passes through the
120 umbilical ring, there is no stenosis of the umbilical artery; (2) When the umbilical cord is twisted, the umbilical artery at the umbilical
121 ring is narrowed due to torsion, and the peak systolic velocity and resistance of the umbilical artery downstream of the umbilical ring
122 are reduced. (3) Normal umbilical artery Doppler waveform; (4) When the umbilical cord is twisted, the umbilical artery changes with
123 low velocity and low resistance. A: umbilical vein; B: umbilical artery; C: the umbilical ring.

124 The Doppler parameters of umbilical artery blood flow are the routine indexes of prenatal ultrasound
125 examination. At present, most of the bad pregnancies are related to the abnormal increase of umbilical artery blood
126 Doppler resistance parameters^[14-18]. When obstetricians suspect fetal distress or abnormal fetal movement, they
127 usually pay more attention to the abnormal increase in Doppler resistance of umbilical artery blood flow. If there is
128 no abnormal increase in Doppler resistance of umbilical artery blood flow, we often relax our vigilance and think
129 that the fetus is safe for the time being, and it is recommended that the fetus be reexamined in the near
130 future. During the time waiting for reexamination, the fetus may die in the uterus due to torsion of the umbilical
131 cord, missing the best rescue opportunity. Therefore, when the fetus has abnormal fetal heart monitoring and
132 abnormal fetal movement, and the Doppler parameters of umbilical artery blood flow do not increase abnormally or
133 decrease instead, the possibility of umbilical cord torsion should be considered. It has been reported that the high
134 helix of umbilical cord is related to umbilical cord torsion^[19-21]. It has been reported that when the umbilical cord is
135 high helical, the umbilical vein blood flow velocity at the umbilical wheel will increase^[22,23] or the a-wave reverse
136 of the venous catheter will occur^[24]. Therefore, when suspected umbilical cord torsion, we also need to pay attention
137 to the contents of unconventional ultrasound examination, such as umbilical cord helix, umbilical vein flow
138 velocity and venous catheter spectrum and so on.

139 Next, we share a case. At 32 weeks of pregnancy, the pregnant woman realized that the fetal movement was
140 normal, and the fetal heart monitoring in the other hospital showed a poor response. She was referred to our
141 hospital for further examination. The previous ultrasound examination showed that the double umbilical artery was
142 found to be a single umbilical artery.

143 The PSV of umbilical artery was 36.42 cm/s, S/D and 1.84 Magi was 0.46 and PI was 0.60, in which PSV was
144 lower than normal 5%th^[25], and Spicer D, RI and PI were lower than 10%th^[25] (Fig. 2A). Fetal heart rate monitoring
145 indicates that the response is poor and the related parameters of Doppler resistance of umbilical artery blood flow
146 are low, suggesting that there may be umbilical cord torsion. Therefore, we examined the shape of the umbilical
147 cord and the blood flow of the venous catheter: it was found that the fetal umbilical cord spirally increased,
148 UCI 0.76^[26] (Fig. 2B,C), and the umbilical vein blood flow velocity at the umbilical cord wheel (PSV 69cm/s) was
149 higher than that of 95%th^[23] (Fig. 2D). The a-wave notch of fetal venous duct was significantly deepened and PI
150 increased, which was larger than that of 95%th^[25] (Fig. 2E). In summary, we considered the possibility of umbilical
151 cord torsion, and the obstetrician performed a cesarean section to terminate the pregnancy. The postoperative
152 diagnosis confirmed umbilical cord torsion at 36 weeks (Fig. 2F). Postoperative pathology of the placental adnexa
153 revealed two umbilical arteries (one of which was atresia) and one umbilical vein.



154
155 **Fig. 2. A case of umbilical cord torsion.** A: Abnormal fetal heart monitoring at 32 weeks of gestation, frequency spectrum of umbilical
156 cord free segment. PSV is lower than 5th%, S/D, RI, PI is lower than 10th%. B: 2D image of high spiral umbilical (changing like chain);
157 C: Color Doppler image of high spiral umbilical (UCI 0.76); D: The umbilical vein flow velocity at the umbilical ring increased (PSV
158 69cm/s); E: Doppler spectrum of intravenous catheter (a notch significantly deepened, PI 1.22). F: Umbilical cord torsion > 30 weeks

159 after birth.

160 **5. Conclusions**

161 The decrease of umbilical artery Doppler parameters in late pregnancy is significantly correlated with
162 umbilical cord torsion, which may be used as a clue for prenatal ultrasound screening of umbilical cord torsion. The
163 Doppler characteristics of umbilical artery blood flow during umbilical cord torsion are consistent with the basic
164 principle of the changes of blood flow Doppler parameters after vascular stenosis in other parts of the human
165 body. A multicenter prospective cohort study is needed in the future.

166 **Abbreviations**

167 GA: gestational age; PSV: peak systolic velocity; S/D: systolic/diastolic ratio; RI: resistance index; PI: pulsatility
168 index.

169 **References and Notes**

- 170 [1]. Bosselmann S, Mielke G. Sonographic Assessment of the Umbilical Cord. *Geburtshilfe Frauenheilkd.*
171 2015;75(8):808-818. doi:10.1055/s-0035-1557819
- 172 [2]. de Laat MW, Franx A, van Alderen ED, Nikkels PG, Visser GH (2005) The umbilical coiling index, a review of
173 the literature. *J Matern Fetal Neonatal Med* 17:93–100
- 174 [3]. Xie Xing, Kong Beihua, Duan Tao. *Gynecology and obstetrics* [M]. Beijing: People's Medical Publishing House,
175 2018:161[M]. (Chinese)
- 176 [4]. Mittal A, Nanda S, Sen J. Antenatal umbilical coiling index as a predictor of perinatal outcome. *Arch Gynecol*
177 *Obstet.* 2015;291(4):763-768. doi:10.1007/s00404-014-3456-5
- 178 [5]. Machin GA, Ackerman J, Gilbert-Barness E. Abnormal umbilical cord coiling is associated with adverse perinatal
179 outcomes. *Pediatr Dev Pathol.* 2000;3(5):462-471. doi:10.1007/s100240010103
- 180 [6]. de Laat MW, Franx A, van Alderen ED, Nikkels PG, Visser GH. The umbilical coiling index, a review of the
181 literature. *J Matern Fetal Neonatal Med.* 2005;17(2):93-100. doi:10.1080/14767050400028899
- 182 [7]. de Laat MW, van Alderen ED, Franx A, Visser GH, Bots ML, Nikkels PG. The umbilical coiling index in
183 complicated pregnancy. *Eur J Obstet Gynecol Reprod Biol.* 2007;130(1):66-72.
184 doi:10.1016/j.ejogrb.2006.01.018
- 185 [8]. atil NS, Kulkarni SR, Lohitashwa R. Umbilical cord coiling index and perinatal outcome. *J Clin Diagn Res.*
186 2013;7(8):1675-1677. doi:10.7860/JCDR/2013/5135.3224
- 187 [9]. Stillbirth Collaborative Research Network Writing Group. Causes of death among stillbirths. *JAMA.*
188 2011;306(22):2459-2468. doi:10.1001/jama.2011.1823
- 189 [10]. ergialiotis V, Kotrogianni P, Koutaki D, Christopoulos-Timogiannakis E, Papantoniou N, Daskalakis G.
190 Umbilical cord coiling index for the prediction of adverse pregnancy outcomes: a meta-analysis and sequential
191 analysis. *J Matern Fetal Neonatal Med.* 2020;33(23):4022-4029. doi:10.1080/14767058.2019.1594187
- 192 [11]. Li Shengli, Liao Yimei, Luo Guoyang. Evaluation and misunderstanding of umbilical cord spiral structure by
193 prenatal ultrasound based on evidence-based medicine. *Chinese Journal of Obstetrics and Gynecology.* 2019.
194 54(2): 126-130. (Chinese)
- 195 [12]. Expert Panels on Urologic Imaging and Vascular Imaging; Harvin HJ, Verma N, et al. ACR Appropriateness
196 Criteria® Renovascular Hypertension. *J Am Coll Radiol.* 2017;14(11S):S540-S549.
197 doi:10.1016/j.jacr.2017.08.040
- 198 [13]. Terminology and Diagnostic Criteria Committee, Japan Society of Ultrasonics in Medicine. Standard method
199 for ultrasound evaluation of renal arterial lesions. *J Med Ultrason* (2001). 2016;43(1):145-162.
200 doi:10.1007/s10396-015-0651-3
- 201 [14]. Byun YJ, Kim HS, Yang JI, Kim JH, Kim HY, Chang SJ. Umbilical artery Doppler study as a predictive marker

- 202 of perinatal outcome in preterm small for gestational age infants. *Yonsei Med J.* 2009;50(1):39-44.
203 doi:10.3349/ymj.2009.50.1.39
- 204 [15]. Alfrevic Z, Stampalija T, Gyte GM. Fetal and umbilical Doppler ultrasound in high-risk pregnancies. *Cochrane*
205 *Database Syst Rev.* 2010;(1):CD007529. Published 2010 Jan 20. doi:10.1002/14651858.CD007529.pub2
- 206 [16]. Hwang HS, Kim YH, Kwon JY, Park YW. Uterine and umbilical artery Doppler velocimetry as a predictor for
207 adverse pregnancy outcomes in pregnant women with anemia. *J Perinat Med.* 2010;38(5):467-471.
208 doi:10.1515/jpm.2010.047
- 209 [17]. Stumpfe FM, Faschingbauer F, Kehl S, et al. Correlation of short-term variation and Doppler parameters with
210 adverse perinatal outcome in small-for-gestational age fetuses at term. *Arch Gynecol Obstet.* 2019;300(3):575-
211 581. doi:10.1007/s00404-019-05216-7
- 212 [18]. The value of introducing cerebroplacental ratio (CPR) versus umbilical artery (UA) Doppler alone for the
213 prediction of neonatal small for gestational age (SGA) and short-term adverse outcomes
- 214 [19]. Chen, R., Yan, J., Han, Q., & Zheng, L. (2020). Factors related to morbidity and maternal and perinatal outcomes
215 of umbilical cord torsion. *Journal of International Medical Research*, 48(3), 030006052090542.
216 doi:10.1177/0300060520905421
- 217 [20]. Tian, C.-F., Kang, M., Wu, W., & Fu, L. (2010). Relationship between pitch value or S/D ratio of torsion of cord
218 and fetal outcome. *Prenatal Diagnosis*, n/a–n/a. doi:10.1002/pd.2499
- 219 [21]. Kaplan, A. D., Jaffa, A. J., Timor, I. E., & Elad, D. (2009). Hemodynamic Analysis of Arterial Blood Flow in
220 the Coiled Umbilical Cord. *Reproductive Sciences*, 17(3), 258–268. doi:10.1177/1933719109351596
- 221 [22]. Hasegawa J, Mimura T, Morimoto T, et al. Detection of umbilical venous constriction by Doppler flow
222 measurement at midgestation[J]. *Ultrasound Obstet Gynecol*, 2010, 36(2):196-201. DOI: 10.1002/uog.7695.
- 223 [23]. Chen ran, Zhang Dirong, Shi Yu, et al. A preliminary study on the velocity of umbilical vein in fetal umbilical
224 wheel. *Chinese Journal of Ultrasonic Medicine*. 2020. 36 (12): 1116-1118. (Chinese)
- 225 [24]. Iwagaki S, Takahashi Y, Chiaki R, et al. Hypercoiled cord can cause a reversible abnormal Doppler in ductus
226 venosus in cases of fetal growth restriction[J]. *J Obstet Gynaecol Res*, 2018, 44(10):1922-1928. DOI:
227 10.1111/jog.13722.
- 228 [25]. Sonographer Branch of Chinese Association of Sonographers. Guidelines for Obstetric ultrasonography in China
229 [M]. Beijing: People's Medical Publishing House, 2019[M].(Chinese)
- 230 [26]. van Diik CC, Franx A, de Laat MW, Bruinse HW, Visser GH, Nikkels PG. The umbilical coiling index in normal
231 pregnancy. *J Matern Fetal Neonatal Med.* 2002;11(4):280-283. doi:10.1080/jmf.11.4.280.283