

NOTE: This preprint reports new research that has not been certified by peer review and should not be used to guide clinical practice.

Social, environmental and economic risk factors and determinants of sleep disturbances in Latin America: A systematic review and a meta-analysis of public health literature

- 1- Faustin Armel Etindele Sosso, Department of Global Health and Ecoepidemiology, Redavi Institute, faustin.armel.etindele.sosso@umontreal.ca
- 2- Filipa Torres Silva, Pneumology department, Centro Hospitalar de Trás-os-Montes e Alto Douro, aftsilva@chtmad.min-saude.pt
- 3- Rita Queiroz Rodrigues, Pneumology department, Centro Hospitalar de Trás-os-Montes e Alto Douro, aqrodrigues@chtmad.min-saude.pt
- 4- Margarida Carvalho, Pneumology department, Centro Hospitalar de Trás-os-Montes e Alto Douro, margaridamc1305@gmail.com
- 5- Sofia Zoukal, Laboratory of epidemiology, Faculty of Medicine and Pharmacy of Casablanca, University Hassan II, Morocco. sofi.cap@gmail.com
- 6- Gabriel Cordova Zarate, Faculté de médecine de l'Université Paris-Saclay, Paris, France. corzar91@gmail.com

Abstract

Background: Mental health recovery is associated with healthy sleep, and disturbances of both, areas represent an increasing public health issue worldwide, particularly in Latin America. Among multiple determinants affecting sleep health, individual's socioeconomic status (SES) is the most ignored and underestimated through

23 literature. No systematic review on the relation between SES and sleep health has been previously conducted in
24 Latin America. *Methods*: PRISMA guidelines were used.

25 *Results*: Twenty cross-sectional studies were selected. 80,0% (n=16) were performed in Brazil, 10,0% (n=2) in
26 Peru, 5,0% (n=1) in Chile, and 5,0% (n=1) were multicentric (11 countries). The combined total number of
27 participants were N=128455, being 3,7% (n= 4693) children, 16,0% (n= 20586) adolescents and 80,3%
28 (n=103176) adults. Higher SES was associated with lower sleep duration. Lower SES was associated with a
29 decrease in sleep quality. Excessive Daytime Sleepiness (EDS) was significantly more prevalent in individuals
30 with lower family income and less education. Sleep bruxism was associated with higher education and lower
31 SES was associated with more sleep bruxism. A meta-analysis of random effects model showed that pooled
32 prevalence of sleep disturbances was 27.32 % (95 % CI 21.71–33.75) with high heterogeneity ($I^2 = 100$ %).
33 Pooled prevalence decreased with high education (OR 0.83; 95%CI [0.75-0.91]; $I^2= 79$ %), while it increased
34 by low income (OR 1.26; 95%CI [1.12-1.42]; $I^2= 59$ %), unemployment (OR 2.84; 95%CI [2.14-3.76]; $I^2= 0$ %)
35 or being housewife (OR 1.72; 95%CI [1.19-2.48]; $I^2=55.4$ %).

36 *Discussion*: Gradient of health disparity existing for some diseases like cardiovascular illness, seems the same
37 for sleep disturbances regardless of world region. Therefore, sleep disturbances management should be address
38 in a multidimensional approach with a significant investment of government in targeted public health program,
39 to reduce sleep disparities and support research before the situation become uncontrollable.

40
41 **Keywords**: Environment; South america; Central america; Latin america; mental health; socioeconomic status;
42 sleep; public health; systematic review
43

44 45 **1- INTRODUCTION**

46 Promoting recovery in mental health is an ongoing project which never ends, because mental health is a complex
47 public health outcome requiring multidimensional interventions at the economic level, the populational level
48 and societal level [1,2]. Mental health is also highly dependent of sleep which has a recognized impact on
49 several brains functions [3] and global health status as well as stress [4]. In addition, sleep has a significant
50 influence on mental health due to its relationship with people’s socioeconomic status (SES) and its connection
51 with multiple biological systems involved in neurological disorders such as anxiety [1,5–10]. That means in
52 others words that, sleep disturbances are mental disorders resulting from complex socioecological and economic
53 interactions between brain, society where we live, global health and SES [7,11,12]. Thus, sleep health
54 inequalities represents a mental health outcome similar to public health issues previously reported for
55 cardiovascular, mental health and metabolic diseases [11]. Empirical literature in western countries seems
56 validated the hypothesis stating that, low SES individuals reported more sleep disturbances than high SES
57 people [13–18]. Similar evidence exists in Asia [19,20] and Oceania [21,22]. Thus, sleep health disparity could
58 be public health issues in other regions, such as Africa and Latin America. Few studies documented sleep health
59 disparities in South and Central America due to a wide range of determinants such as employment, income,
60 education, occupation and social position [11,23–25]. A comprehensive evaluation of public health literature
61 related to Latin America showed that no previous systematic review has investigated the relationship between
62 SES and sleep health in this region. It’s important to analyze if trends related to the influence of SES
63 determinants of mental health on sleep health observed in western countries are following the same patterns in
64 Latin America. The goals of this systematic review are to 1) document the socioeconomic determinants of sleep
65 health in Latin America and 2) promote the mental health recovery related to a good sleep health.

66 67 68 **2- METHODS**

69 ***2.1- Literature search***

Relevant peer review studies included in this systematic review were identified by searching the following databases: Web of Science, Scopus, PubMed/Medline and Ovid, restricted on a period between January 1990 and May 2023. A combination of terms “socioeconomic”, “socio-economic”, “social position”, “social class”, “socioeconomic position”, “determinant*”, “indicators*”, “markers*”, “health inequalities”, “health inequities”, “sleep”, “sleep disorders”, “sleep disturbances”, “sleep complains”, “sleep outcome”, “sleep health”, “south america*”, “southern america*”, “central america*”, “latin america” was used. All included articles were identified following the PRISMA guidelines detailed in Figure 1 [25].

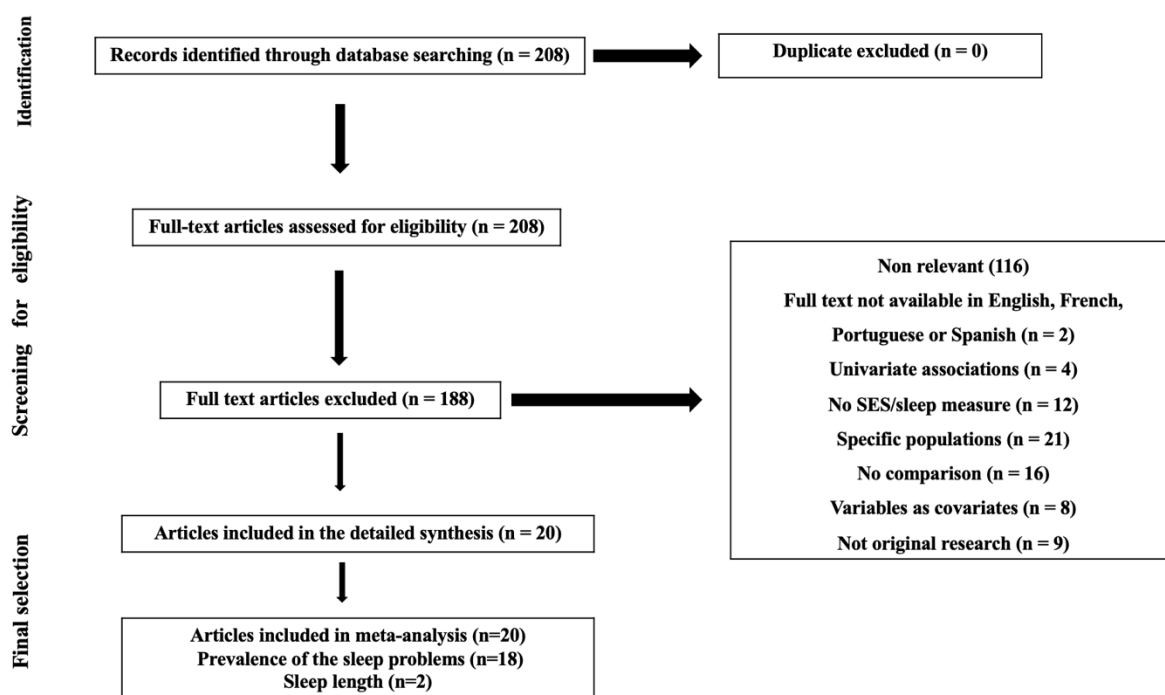


Figure 1. PRISMA flowchart of study selection process

2.2- Selection of evidence and data extraction

Two reviewers (FAES, SZ) independently reviewed the titles and abstracts of the studies identified by the search strategy and determined eligibility for inclusion, while disagreements were resolved by consensus with a third external reviewer. For studies that passed the initial screening, the entire text was collected and the screening process was repeated by the same co-authors to conclude with the final articles included, validated by the third reviewer. Then, four reviewers (FTS, RQR, MC, FAES) extracted from each report the following studies characteristics: population, % women, age, sample size, SES measures, relevant statistics, interaction or mediation, sleep measures, conclusions/main effects, statistical methods and results significance.

87
88
89
90
91
92
93
94
95
96
97
98
99
00
01
02
03
04
05
06
07
08
09
10
11
12
13

2.3- Inclusion and exclusion criteria

Empirical studies were defined as studies of any design (cross-sectional, retrospective or longitudinal) assessing humans of any gender, race/ethnicity and age from the general population of any country from Latin America. The article should include an objective or a subjective measure of SES, such as income, educational level, wealth, profession/occupation, employment status, perceived SES or self-reported SES. Proxy measures of SES, such as neighborhood and social class, were also included. For studies involving children and adolescents, perceived family SES measures, such as parental education, parental occupation or annual household income were utilized. Studies were excluded based on the following criteria: 1) They were interventional trials, any type of reviews (narrative, overview, systematic, umbrella, meta-analyses), case series, case reports, conference series or any writing without original research (editorial, commentary, letter to editors), 2) articles did not provide statistical significance in cases where either SES or sleep were evaluated as covariates or mediators, 3) the full text was not accessible, 4) authors/researchers recruited participants with medical conditions at the beginning of study (for example people with medications including sleep pills, people with cancers, people with neurodegenerative diseases, etc....) and 5) articles were not written in English, French, Portuguese and Spanish (languages of authors).

2.4- Quality rating of studies

The National Institute of Health's (NIH) Quality Assessment Tool for Observational Cohort and Cross-Sectional Studies was used to rate the quality of included studies [26]. This quality rating's tool analyzed fourteen quality criteria asking an equal number of questions about study objectives, population, exposures, outcomes, follow-up rates, and statistical analysis. SES was considered the exposure variable and sleep measures were the outcome variable, respectively. Overall quality ratings (**Table 2**) were calculated by taking the proportion of positive rating for the sum of applicable criteria. Studies with < 50% positive rating were judged as poor quality, $\geq 65\%$ as good quality, and the rest as fair quality [26].

14 **2.5- Study outcomes**

15 The primary outcomes were related to the prevalence of sleep disturbances in Latin America and the difference
16 in sleep length between men and women. The secondary outcomes aimed to explore how SES influences the
17 prevalence of sleep disturbance in Latin America. This exploration was conducted through analyzing education,
18 income, employment status, and perceived SES, as long as they were reported by at least two independent
19 studies.

21 **2.6- Data analysis**

22 Meta-analysis was performed using the meta package on R with RStudio interface (Version 4.1.3, R Core Team,
23 2022) to analyze the collected data.

24 In each study, the prevalence of sleeping disturbances in Latin America was obtained. Studies did not report the
25 prevalence are excluded. The random effects model was used with the logit transformation for obtaining the
26 pooled results, because it produces more conservative results than fixed-effects models regardless of
27 heterogeneity scores [27]. The pooled prevalence estimates of sleeping disturbances in Latin America was
28 presented as a percentage with 95% confidence intervals (CIs) using a forest plot. Also, a subgroup analysis
29 was conducted for different sleep issues, cities, study's quality and age group to assess the contribution of each
30 study to overall heterogeneity in the prevalence of sleep disturbance.

31 To measure the relationship between SES and sleeping disturbances, we extracted from the selected publications
32 the adjusted odds ratio (aOR) with 95% CIs. Their standard errors were calculated from the respective CIs. The
33 value from each study and the corresponding standard error were transformed into their natural logarithms to
34 stabilize the variances and to normalize the distribution. The pooled OR (and 95%CI) was estimated using a
35 DeirSimonian-Laird random effect model. In situations in which a study reported effect estimates for
36 independent subgroups, the subgroups were treated as individual studies in the meta-analysis.

37 The test of the overall effect was assessed by using Z-statistics at $p < 0.05$. The heterogeneity among the included
38 studies was assessed using Cochran's Q test and I^2 statistics. The thresholds of 25%, 50%, and 75% were used
39 to indicate low, moderate, and high heterogeneity, respectively [28, 29]. A funnel plot based on Egger's

40 regression test was used to evaluate the publication bias [30]. In all analysis, a *p*-value less than 0.05 was
41 considered statistically significant.

42 **3- RESULTS**

43 **3.1- Characteristics of included articles**

44 Twenty articles were included [31–50] in the final sample, all cross-sectional studies and available in **Table 1**.
45 Among these studies, 80,0% (n=16) were performed in Brazil [31–33, 35, 37, 38, 41–50], 10,0% (n=2) in Peru
46 [39, 40], 5,0% (n=1) in Chile [34], and 5,0% (n=1) were multicentric (11 countries)[36]. The combined total
47 number of participants were N=128455, being 3,7% (n= 4693) children, 16,0% (n= 20586) adolescents [38, 39,
48 41, 42, 45] and 80,3% (n=103176) adults [31–37, 39, 40, 46–50]. The smallest sample size was n=851 [43] and
49 the largest was n=60202 [49]. The socioeconomic indicators used were income (monthly personal income,
50 monthly family income, per capita income, annual household income) [31–35, 37, 38, 41, 43–47], wealth/assets
51 [37, 39, 40, 49, 50], number of residents in the household [46], employment status/occupation [31, 32, 34, 35,
52 37–39, 46, 47, 50], accessed healthcare system [37] and composite indices [42]. The sleep variables used were
53 excessive daytime sleepiness [32, 40, 49], sleep duration [37–39, 41, 44–46, 50], sleep quality/sleep disturbance
54 [33, 34, 36, 38, 44, 47, 49], insomnia [31, 36], obstructive sleep apnea (OSA)/sleep-disordered breathing (SDB)
55 symptoms [35, 40] and bruxism [42, 43, 48]. Majority of articles were of poor quality (55%) and detailed
56 qualitative evaluation is available in **Table 2**.

57 **Table 1.** Characteristics of included studies investigating determinants of sleep health in Latin America.
58
59
60
61
62

Study	Study design	Population	% Women	Age (mean/median ± SD/[IQR] or range)	Sample size	SES measures	Sleep measures	Statistically significant findings	Main effects	Interactions/Mediations
Rocha 2002 [31]	Cross-sectional	Adults from Bambuí, Brazil	55,5 %	39 (N/R)	1066	Years of education (0, 1–3, 4–7, 8+)	Insomnia symptoms (difficulty initiating sleep,	Insomnia was higher in females with age	Insomnia was independently	

						Current employment situation (working, not working, retired) Monthly family income (<2.0, 2.0-3.9, ≥4 Brazilian minimum wage)	frequency of disrupted sleep and frequency of early morning awakening) during the last 30 days, at least three times a week or more, with any level of distress	60+ (OR 1,8 CI 1,1-1,3) and with 1-3 or no years of schooling (OR 1,8 CI 1,1-3,0; OR 2,6 CI 1,3-5,1) and males with 1-3 years of schooling (OR 2,2 CI 1,1-4,1)	associated with less education	
Hara 2004[32]	Cross-sectional	Adults from Bambuí, Brazil	55,5 %	39 (N/R)	1066	Years of education (0, 1-3, 4-7, 8+); Monthly personal income (none, <1, 1.0-1.9, ≥2.0 Brazilian minimum wages); Monthly family income (<2.0, ≥2.0 Brazilian minimum wages); Current employment situation (student, working, unemployed, retired)	Excessive daytime sleepiness three or more times per week with consequent impairment of daily activities	EDS was associated with insomnia (OR 2,24 CI 1,6-3,15) and lower family income (OR 1,47 CI 1,02-2,12)	Lower family income was associated with EDS	
Blay 2008[33]	Cross-sectional	Adults ≥ 60 yo from Rio Grande do Sul, Brazil	66%	N/R	6961	Income (< vs ≥US\$200/month) Years of education (0-3 vs ≥4)	Sleep disturbance (single question, yes vs no) in the last 30 days	Lower income (OR 1,26 CI 1,11-1,43) and lower education (OR 1,8 CI 1,24-1,76) were related to disturbed sleep	Low income and low education were independent risk factors for self-reported sleep disturbance.	
Fritsch Montero 2010[34]	Cross-sectional	Adults 18-64y from Gran Santiago, Chile	52,3 %	N/R	3867	Schooling (upper, middle, basic, none) Employment status (10 levels) Per capita income quartiles (high, middle high,	Revised Clinical Interview Schedule sleep score >1	Being an occasional worker (OR 1,75 CI 1,11-2,77), unemployed looking (OR 2,8 CI 1,32-5,93) and not looking (OR 4,63 CI 1,7-12,51) for a job, having	Unemployed and occasional workers patients, housewives, patients with common mental disorders had	

						middle low, low), decrease of income.		adequate (OR 2,05 CI 1,21-3,47) and poor living conditions (OR 2,04 CI 1,24-3,47), being a housewife (OR 1.46) or female (OR 1,43 CI 1,09-1,95) were considered to be risk factors to have sleep disturbance	higher odds of having sleep disorders	
Tufik 2010[35]	Cross-sectional	Adults 20-80 y from the general population in Sao Paulo, Brazil	55%	N/R	1042	Annual household income (high, mid, low according to the Brazilian Economic Classification Criteria), Employment status (working vs not working),	OSA ICSD-2 criteria (AHI from PSG, items 2 and 5 from Berlin Questionnaire, ESS >10 and/or item 8 from PSQI, Chalder Fatigue Scale >4)	Increasing age (OR 3,9; 6,6; 10,8; 34,5) and gender (OR 4,1 CI 2,9-5,8) were independent and strong associated factors for the presence of OSA.	SES was not associated with OSA	Low income was a protective factor for males (OR 0.4 CI 0.1-0.9), but not significant in females (p=0.057)
Blümel 2012[36]	Cross-sectional	40-59y women recruited from 20 healthcare centres in 11 Latin American countries	100%	49,8 (5,4)	6079	Education (\leq vs >12 years),	Insomnia (AIS score >5). Sleep quality (PSQI global score >5).	Education > 12 years was associated with less insomnia (OR 0,84 CI 0,74-0,9) and less poor sleep quality (OR 0,83 CI 0,73-0,94).	Higher educational level was an independent risk factor related to less insomnia and better sleep quality	
Lima 2012[37]	Cross-sectional	Adults from general population in Campinas, Brazil	52,3%	41.8 years (95% CI: 40,7–42,9)	2637	Education (0-3, 4-7, 8-11, \geq 12 y), per capita monthly household income (1 minimum salary or less, 1-3 times the minimal salary, 3 or more times the minimum salary),	Sleep duration (\leq 6, 7-8, \geq 9h)	Long sleep (\geq 9h) was less prevalent among those with 4-11 or \geq 12 years of schooling (OR 0,38 CI 0,25–0,60; OR 0,26 CI 0,13–0,50) and more prevalent among those not working or	Long sleep was more prevalent among those with a lower level of education, those who did not work and housewives.	

						work status (working, not working, housewife), number of household appliances ($\leq 10, >10$).		housewives (OR 2,70 CI 1,96–3,73; OR 2,13 CI 1,43–3,18)	
Hoefelmann 2013[38]	Cross-sectional	Adolescents 15-19 years from high-schools in Santa Catarina, Brazil	57,2 %	15-19 years	5932 (2001) & 5932 (2011)	Work status (yes vs no), monthly family income (in tertiles), school grading and school shift	Insufficient sleep duration (<8h), poor sleep quality (sometimes/hardly ever/never vs always/nearly always)	Working (CI 1,66 CI 1,41-1,96; OR 1,38 CI 1,21-1,57 in 2001 and 2011 respectively), school grade (OR third year in 2001 = 1,42; CI 1,02-1,99), income (OR second tertile in 2011 = 1.19 CI 1,03-1,38), and school shift (OR night in 2011 = 1,26, CI 1,07-1,49) were related to poor sleep quality. Working (OR 2,41 CI 1,94-2,99 and OR 1,64 CI 1,42-1,89, in 2001 and 2011 respectively), monthly family income (OR third tertile in 2011 = 1,68 CI 1,24-2,28) and higher school grading (OR third year in 2011 = 1,48 CI 1,15-1,91) were associated with insufficient sleep duration.	Working and higher family income was associated with both short sleep and poor sleep quality. Higher school grading was associated with both short sleep and poor sleep quality. Night school shift was associated with poor sleep quality.
Carrillo	Cross-sectional	Adolescents and adults	49,4 %	35,8 ± 17,7	12424	Education (none/primary school,	Self-reported sleep duration (short-sleep <6,	Higher probability of being a	Participants with lower

<p>Larco 2014[39]</p>	<p>sectional</p>	<p>≥12 y from the general population of Peru</p>				<p>high school, higher), asset index (in tertiles), job status (yes vs no)</p>	<p>regular-sleep 6-8, long-sleep >8 h)</p>	<p>short-sleeper was found in those currently employed (OR 1,5 CI 1,09-2,06) and lower probability in those with high school (OR 0,53 CI 0,32 -0,86) or none/primary education (OR 0,63 CI 0,57-0,7). Higher probability of being a long-sleeper was found in those with high school (OR 1,42 CI 1,34-1,51) or none/primary education (OR 2,17 CI 1,72-2,73) and lesser probability in those with middle (2,17 CI 1,72-2,73) or highest (OR 0,54 CI 0,48-0,60) assets index and currently working (OR 0,59 CI 0,46-0,75).</p>	<p>education were more likely to have long sleep duration and less likely to have short sleep duration. Those with higher asset index were less likely to report long sleep. Employed individuals had a higher probability of being short sleepers and lower probability of being long sleepers than unemployed.</p>	
<p>Schwartz 2015[40]</p>	<p>Cross-sectional</p>	<p>Adults >35 y from the general population of 4 Peruvian settings</p>	<p>49,5 %</p>	<p>54,1 [IQR 18,8]</p>	<p>2682</p>	<p>Wealth index - based on current occupation, household income, assets and household facilities (in tertiles)</p>	<p>SDB symptoms: habitual snoring (self-reported snoring at least 3 nights per week); observed apnea (pauses in breathing or choking during sleep reported by a spouse or bed partner); excessive daytime sleepiness (modified ESS score >6)</p>	<p>More excessive daytime sleepiness was associated with medium SES (OR 1,41 CI 1,10-1,80; p=0,006). Less habitual snoring was associated with medium (OR 0,79 CI</p>	<p>Lower SES was associated with less habitual snoring but more excessive daytime sleepiness. No significant association was found between SES and</p>	

								0,64-0,97; p=0,027) and low (OR 0,7 CI 0,55-0,90; p=0,005) SES.	observed apnea.	
Schäfer 2016[41]	Cross-sectional	Adolescents 18y members of a population-based birth cohort in Pelotas, Brazil	50,9 %	18	4016	Family income at birth and at 18y (in quintiles) Maternal schooling in completed years at birth (0, 1-4, 5-8, 9-11, ≥12y) Maternal skin color (white, black, other) Currently enrolled in school (Yes, no) Adolescent schooling in completed years (≤4, 5-8, ≥9y)	Self-reported sleep duration (h/day)	Maternal schooling was associated with sleep duration in both genders, with an inverse linear trend in girls (p<0.001). Girls whose mothers had no schooling showed an increase 1,40 (B) hours per day (95% CI 0,77-2,04) compared to those whose mothers had ≥12y of schooling. Girls whose mothers were black had 0,37 hours more sleep per day (95% CI 0,17-0,58) than those whose mothers were white. Girls in the lowest fifth of family income at birth had higher sleep duration (β=0,58, 95% CI 0,30-0,87) compared to girls in the highest fifth. Adolescents who were currently studying showed lower sleep duration (β=-0,34,	Lower maternal and adolescent schooling and lower family income was associated with higher sleep duration. Black maternal skin color was associated with higher sleep duration in girls.	

								95% CI - 0,51 -- 10,17 for males; β =-0,75, 95% CI - 0,92 -- -0,59 for females). Boys with lower schooling showed higher sleep duration (β =0,45, 95% CI 0,09-0,81 for males). Girls with intermediate schooling (5-8 years) showed higher sleep duration (β =0,46, 95% CI 0,27-0,65). Boys and girls in the lowest fifth family income at 18 years had higher sleep duration (β =0,58, 95% CI 0,33-0,84) and β =0,69, 95% CI 0,41-0,96, respectively)		
Fulgencio 2017[42]	Cross-sectional	Adolescents 13-15 y from 14 public and private schools in Itabira, Brazil	56,1 %	13-15 years	1344	SES - Composite variable (goods owned by the family and educational level of its head), categorized as higher vs lower	Parent-reported possible sleep bruxism (single question, yes vs no)	Higher SES was associated with higher prevalence of possible sleep bruxism (PR 1,51, 95% CI 1,23-1,86).	Greater prevalence of possible sleep bruxism was observed among adolescents from a higher SES	
Mota-Veloso 2017[43]	Cross-sectional	Children 6-12 y from seven public and two private schools in Diamantina	54,8 %	6-12	851	SES - Composite variable of 3 indicators: equivalized household income (10 levels), mother's and father's	Sleep bruxism (reports of parents/caregivers and oral clinical evaluation)	SES had a significant indirect effect on bruxism via sucking habits (SC = -0,08, p = 0,01). SES had a significant	Lower SES was associated with more sleep bruxism.	The effect was mediated by sucking behaviour (finger sucking, nails or other objects bite)

		tina, Brazil				schooling (9 levels)		direct effect (SC = -0,16, p = 0,01) and the total effect on tooth wear was also significant (SC = -0,17, p = 0,00).		
Netsi 2017[44]	Cross-sectional	Infants from Pelotas, Brazil	N/R	N/R	3842	Maternal education (0-4 years, 5-8 years, ≥9 years) Family income (in quintiles)	Parent-reported sleep duration, awakenings, and sleep disturbances (nightmares/night terrors, restless sleep, difficulty going to sleep, wakes up at night, and wakes up early)	There were no consistent associations between sleep duration or sleep disturbances and sociodemographic characteristics	Maternal education and family income were not associated with infant sleep duration or disturbances	
De Lima 2018[45]	Cross-sectional	Students with 14-19y, from high schools in São José, Brazil	54,2 %	16,1 (±1.1)	1110	Maternal education (<8 vs ≥8 years) Family income (up to two minimum wages; two to ten times the minimum wage; more than ten times the minimum wage)	Sleep quality (perception of sleep quality, single question, categorized in almost never/seldom/sometimes vs with relative frequency/almost always),	The prevalence of low quality of sleep was higher in adolescents whose mothers had up to 8 years of study (OR 1,44 CI 1,13-1,84). Those who had sedentary behaviour of risk based on screen time (OR 0.54 CI 0.42-0.70).	Students whose mothers had high level of education were more likely to have low quality of sleep. Students with sedentary risk behaviour were less likely of reporting poor sleep quality.	
Lima 2018[46]	Cross-sectional	Adults ≥20y from the general population of Campinas, Brazil	52,7 %	43,7 (CI 42,3-45,2)	1969	Work status (yes vs no) Per capita family income (<1; 1-2; 3 or more minimum wages) Schooling (0-4; 5-8; 9-11; 12 or more years of schooling) Number of residents in the	Sleep duration (6h or less, 7-8h, 9h or more)	Associated with short sleep: highest level of schooling (OR 1,73 CI 1,08-2,75). The probability of long sleep was lower in individuals who work (OR 0,39 CI 0,28-0,55), with higher	Those with higher schooling were more likely to have short sleep. The chance of long sleep was lower in those who have more years of	Adjusting for chronic diseases and health disturbances attenuated the effects of education on short sleep

						household (1;2;3 or more)		income (OR 0,49 CI 0,29-0,85).	schooling , have higher income, and worked.	
Barros 2019[47]	Cross-sectional	Adults ≥20y from the general population in Campinas, Brazil	52,7 %	43,7 (CI 42,3-45,3)	1998	Education (0-3y, 4-8y, 9-11y, ≥12y) Per capita family income (<1 minimum wage, 1-3, >3) Employment (working vs not working)	Sleep quality (single question; excellent/very good/good vs regular/poor/very poor)	Poor sleep quality was more frequent in women (OR 1,36 CI 1,14-1,63), older individuals (OR 1,5 CI 1,20-1,87), unemployed (OR 1,26 CI 1,03-1,54) and in those with the highest number of children (OR 1,33 CI 1,02-1,74).		Adjusting for amount of health disturbances, self-rated health, common mental disorders, and life satisfaction attenuated the effect
Pontes 2019[48]	Cross-sectional	Adults ≥18y from the general population in Rio Grande, Brazil	56,6 %	45,9 (±17,25)	1280	Education (0 to 11 years vs 12 years or more)	Sleep bruxism (ICSD criteria)	In the bivariate analysis, the schooling (OR 1,66 CI 1,14-2,42) and stress (OR 1,66 CI 1,14-2,42) variables were associated with sleep bruxism. In the adjusted analysis, age (OR 1,63 CI 1,07-2,46), schooling (OR 1,92 CI 1,35-2,72), and stress (OR 1,76 CI 1,11-2,81) were associated with sleep bruxism.	Higher education and psychological stress were associated with higher prevalence of sleep bruxism	
Wendt 2019[49]	Cross-sectional	Adults from the general population in Brazil	52,9 %		60202	Education (none, incomplete primary level, complete primary level, secondary level,	Sleep disturbance frequency and daytime fatigue in last two weeks (none; up to seven days; more than seven days; almost every day)	Sleep disturbances and Daytime fatigue had lower prevalence in highly educated individuals	Highly educated individuals had lower prevalence of sleep disturbance than those with no	

						higher education) Wealth index (assets index score; in quintiles)		with respectively (OR 0.73 CI 0.64-0.83) and (OR 0.79 CI 0.69-0.92)	formal education	
Wendt 2020[50]	Cross-sectional	22-year-old adults from a population-based birth cohort in Pelotas, Brazil	53,2 %	22	2462	Wealth index (asset index in quintiles), occupation (none, only study, only work, both)	Sleep duration and efficiency (7-day accelerometry)	Women not working or studying presented higher Sleep Time Window (OR 7,5 CI 7,3-7,6) and lower Sleep Percent (OR 82 CI 81,1-83,7). Those in the poorest quintile of wealth index presented lower SP (OR 82,4 CI 81,9-83,7)	Women in the poorest quintile of wealth index presented with lower sleep efficiency	

AHI = apnea-hypopnea index; AIS = Athens Insomnia Scale; CI = confidence interval; EDS = excessive daytime sleepiness; ESS = Epworth Sleepiness Scale; ICSD = International Classification of Sleep Disorders; OR = odds ratio; OSA = obstructive sleep apnea; PSG = polysomnography; PSQI = Pittsburgh Sleep Quality Index; SDB = sleep-disordered breathing; SES = socio-economic status

53
54
55
56
57

Table 2: Quality rating of the included studies using the NIH quality assessment tool.

Study	Q1	Q2	Q3	Q4	Q5	Q6	Q7	Q8	Q9	Q10	Q11	Q12	Q13	Q14	Quality rating
Rocha 2002 [31]	Y	Y	Y	Y	Y	N	N	Y	N	N	Y	NA	NA	Y	Fair
Hara 2004[32]	Y	Y	Y	Y	Y	N	N	Y	N	N	Y	NA	NA	Y	Fair
Blay 2008[33]	Y	Y	Y	Y	Y	N	N	Y	Y	N	N	NA	NA	Y	Fair
Fritsch Montero 2010[34]	Y	Y	N	Y	N	N	N	Y	Y	N	Y	NA	NA	Y	Fair
Tufik 2010[35]	Y	Y	Y	Y	Y	N	N	Y	Y	N	Y	NA	NA	Y	Good
Blümel 2012[36]	Y	Y	Y	Y	Y	N	N	Y	Y	N	Y	NA	NA	Y	Good
Lima 2012[37]	Y	Y	Y	Y	Y	N	N	Y	N	N	N	NA	NA	Y	Fair
Hoefelmann 2013[38]	Y	Y	Y	Y	Y	N	N	Y	N	Y	Y	NA	NR	Y	Good
Carrillo- Larco 2014[39]	Y	Y	Y	Y	N	N	N	Y	Y	N	Y	NA	NA	Y	Fair
Schwartz 2015[40]	Y	Y	Y	Y	N	N	N	Y	Y	N	Y	NA	NA	Y	Fair
Schäfer 2016[41]	Y	Y	Y	Y	N	N	N	Y	Y	Y	N	N	Y	Y	Good
Fulgencio 2017[42]	Y	Y	Y	Y	Y	N	N	Y	Y	N	Y	NA	NA	Y	Good
Mota-Veloso 2017[43]	Y	Y	Y	Y	Y	N	N	Y	Y	N	Y	NA	NA	Y	Good
Netsi 2017[44]	Y	Y	Y	Y	N	N	N	Y	N	Y	N	N	Y	Y	Fair
De Lima 2018[45]	Y	Y	Y	Y	Y	N	N	Y	Y	N	Y	NA	NA	Y	Good
Lima 2018[46]	Y	Y	Y	Y	Y	N	N	Y	Y	N	N	NA	NA	Y	Fair
Barros 2019[47]	Y	Y	Y	Y	Y	N	N	Y	Y	N	N	NA	NA	Y	Fair
Pontes 2019[48]	Y	Y	Y	Y	Y	N	N	N	Y	N	Y	NA	NA	Y	Fair
Wendt 2019[49]	Y	Y	Y	Y	Y	N	N	N	N	N	N	NA	NA	Y	Poor
Wendt 2020[50]	Y	Y	Y	Y	Y	N	N	Y	Y	N	Y	NA	N	Y	Good

*N: No; NA: not applicable; NR: not reported; Y: Yes

3.2- Descriptive synthesis of articles

Quantitative analyses are presented in the results section. Presented below is a descriptive analysis, which provides a deeper examination of the overall findings that were not considered in the quantitative analysis. Table 1 presents details of the individual studies included in the descriptive analysis.

Sleep duration:

01 Seven cross-sectional studies examined the relation between socioeconomic status (SES) and sleep duration
02 [37–39, 41, 44, 46, 50]. One of these was conducted with children (from 3 to 48 months old) [44], two studied
03 adolescents (12 to 19 years old) [38, 41], three involved adults [37, 46, 50] and one encompassed both
04 adolescents and adults [39].

05 Overall, a higher SES was associated with shorter sleep duration. Specifically, highest level of education [37–
06 39, 41, 46], being employed [37–39, 46], higher income [38, 39, 41, 46] and living with more residents [46]
07 were associated with shorter sleep duration in samples of adults and adolescents. In addition, long sleep was
08 more prevalent among housewives [37], adolescents with black maternal skin color [41] and whose mothers
09 had lower schooling [41].

10 In contrast, the poorest wealth index and being unemployed or not studying were associated with lower sleep
11 percentage in another study with adults[50]. One study did not find consistent associations between sleep
12 duration and maternal education or family income in children [44]. The overall quality of the selected studies
13 was good for three studies [38, 41, 41] and fair for four studies [37, 39, 44].

14 ***Sleep quality/sleep disturbance:***

15 Eight cross-sectional studies assessed the relationship between sleep quality or disturbance and SES [33, 34,
16 36, 38, 44, 45, 47, 49]. One of these studies was conducted with infants (from 3 to 48 months) [44] two with
17 students (14 to 19 years old) [38, 45] and the others with adults [33, 33, 47, 49]. One study focused only on
18 adult women [36]. The overall quality of the studies selected was good for three studies [36, 38, 45], fair for
19 three studies [33, 34, 47] and poor for one study [49].

20 Globally, lower SES was associated with diminished sleep quality. Specifically, low income [33, 38] and
21 unemployment [34, 47] were associated with impaired sleep quality. Two studies indicated a higher prevalence
22 of sleep disturbance in women [34, 47]. More educated adults had significantly less sleep disturbance [33, 36,
23 49]. In contrast, one study found that higher maternal education was associated with lower quality of sleep in
24 students [45], but this association was not found in infants in another study [44]. Additionally, psychiatric
25 comorbidities [33, 34], alcohol and drug consumption [34, 36] were also associated with sleep disturbance.
26
27

08 ***Insomnia:***

09 Concerning insomnia, two cross-sectional studies assessed its relationship with SES [31, 36]. One study
10 evaluated only women [36] and one study assessed adults in general[31]. The overall quality of the two studies
11 was good.

12 In both of the aforementioned studies, insomnia was independently associated with individuals with less
13 education [31, 36]. Moreover, alcohol and drug consumption was also associated with insomnia, according to
14 another study [36].

15
16 ***Excessive daytime sleepiness:***

17 Three cross-sectional studies approached the association between excessive daytime sleepiness and SES [32,
18 40, 49]. All studies assessed adults. The overall quality of the studies selected was good for one study [32], fair
19 for another study [40] and poor for the third study [49].

20 Largely, excessive daytime sleepiness was associated with lower SES in one the studies [40]. Additionally, it
21 was also significantly more prevalent in individuals with lower family income [32] and less education [49].

22
23
24 ***Obstructive sleep apnea (OSA) / Sleep-disordered breathing (SDB) symptoms:***

25
26 Concerning OSA/SDB, two cross-sectional studies assessed their relationship with SES [35, 40]. Both studies
27 evaluated adults in the general population. The overall quality was good in one study [35] and fair for the other
28 study [40].

29 In one study, lower SES was associated with less frequent snoring. However, no significant association was
30 found between SES and observed apneas [35]. The other study did not find any association between SES and
31 OSA [40].

32
33
34 ***Bruxism:***

35 Three cross-sectional studies assessed the relation between SES and bruxism [42, 43, 48]. One of the studies
36 was conducted with infants (ages 6-12 years)[43], one with adolescents (aged 13-15 years) [42] and the last one
37 with adults [48]. The overall quality was good in two studies [42, 43] and fair in one study [48].

38 Among these three studies, two studies reported that sleep bruxism was independently associated with higher
39 SES, including higher education[42, 48]. However, the other study, conducted by Mota-Veloso *et al.* [43], found
40 out that SES had a significant indirect effect on bruxism via sucking habits (finger sucking, nails or other objects
41 bite) and that lower SES was associated with more sleep bruxism [43].

42 43 44 **3.3- Prevalence of sleep disturbances in Latin America**

45
46 Based on our selection criteria, eighteen studies [31–40, 42–49] were eligible. Where results in the same article
47 were reported for different sleep disturbance types separately, they were entered into the analysis as separate
48 studies. Therefore, a total of 18 papers including 28 studies were included in the final meta-analysis which is
49 shown in **Fig 2.A**.

50 The overall pooled prevalence for sleep disturbance in Latin America was 27.32 % (95 % CI 21.71–33.75, $I^2 =$
51 100 %) (**Fig 2.A**). To decide whether to include all of the articles examining sleep disturbances or not, a
52 publication bias chart was created. The results showed that publication bias was not significant ($p = 0.059$) (**Fig**
53 **3**).

54 We divided eighteen papers into seven categories according to different types of sleep disturbances. Subgroup
55 analysis was manipulated based on seven categories (**Fig 4**). The highest prevalence was for insomnia, with
56 39.52 % (95 % CI 31.79–47.82; $p < 0.01$), and the lowest prevalence was for EDS, with 15.52 % (95 % CI
57 11.85–20.07; $p < 0.01$). The overall pooled prevalence for sleep disturbance was 37.22 % (95 % CI 27.73–
58 47.82; $p = 0$) across eight articles [33, 34, 36, 38, 44, 45, 47, 49], for OSA/SDB was 31.32 % (95 % CI 28.77–
59 34.00; $p = 0.11$) across two articles [35, 40] and for bruxism was 16.60 % (95 % CI 8.83–29.04; $p < 0.01$) across
60 three articles [42, 43, 48]. The overall pooled prevalence for short sleep duration was 23.09 % (95 % CI 8.98–
61 47.75; $p = 0$) across four articles [37–39, 46], and for long sleep duration was 21.67 % (95 % CI 15.95–28.75; p
62 < 0.01) across three articles [37, 39, 46].

63 64 65 **3.4- Sleep length in Latin America**

66

A total of two articles [41, 50] reported the sleep length (fig 2.B). Where results were reported for men and women separately, they were entered into the analysis as separate studies. In the pooled analysis, sleep length was significantly higher in men with sleep disturbances than in women with sleep disturbances with a standardized mean of 0.40 hours (95% CI: 0.34-0.47; $p = 0.11$; $I^2 = 100\%$).

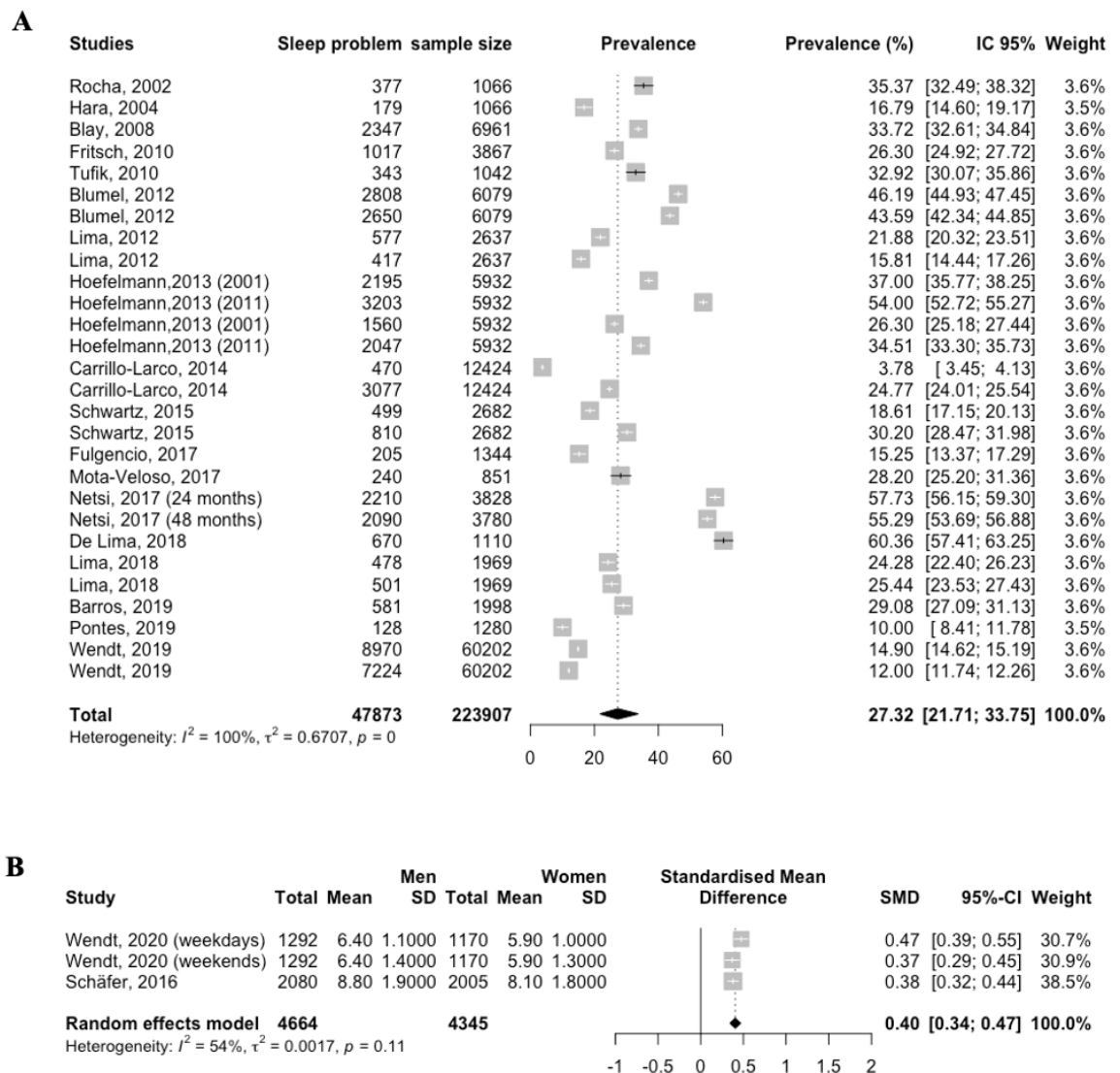
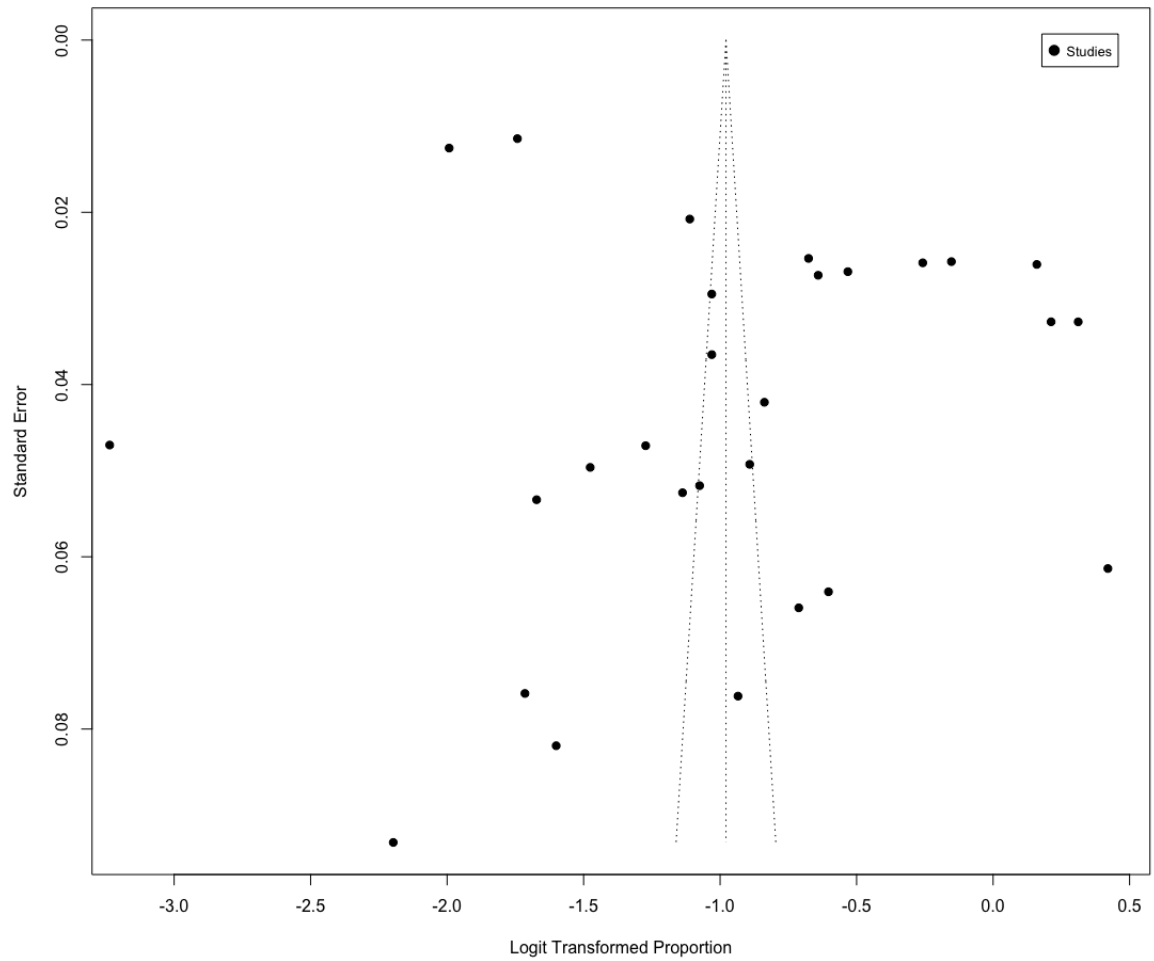


Fig 2: Forest plot showing the primary outcomes in 31 cross sectional studies from 20 published reports in Latin America:



(A)

Prevalence of sleep disturbances; (B) Sleep length (hours)

79
80
81
82
83
84
85
86
87
88
89

Fig 3: Funnel plot for meta-analysis of the prevalence of sleep disturbances in Latin America. Egger's test: $p=0.0598$

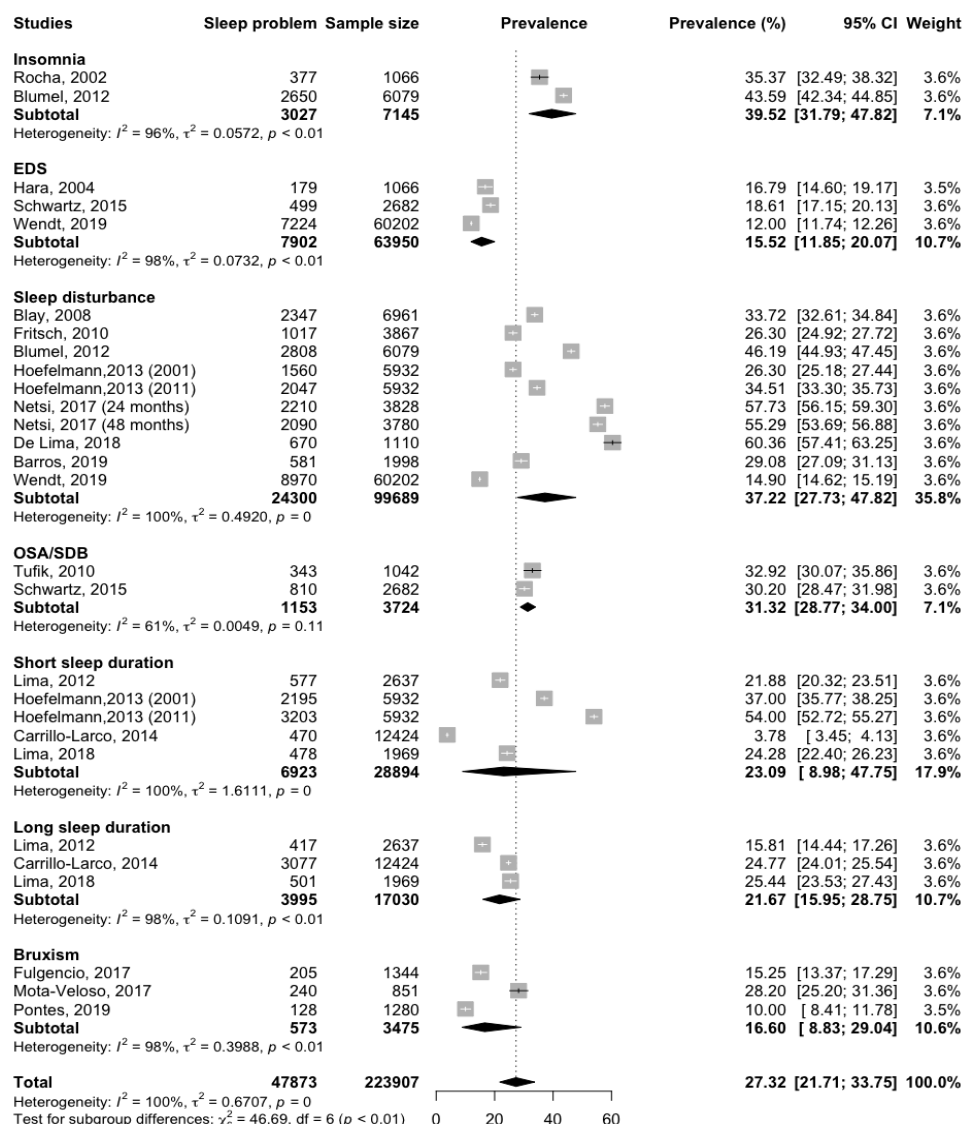


Fig 4: Subgroup analysis on the prevalence of sleep disturbances in Latin America by type of sleep disturbance. The black dot point is the estimate and the horizontal line is the 95% CI for prevalence plotted for each study. The black diamond at the bottom of each type of sleep disturbance is the estimates average prevalence. CI: confidence interval

3.5-Subgroup analysis

Because of significant heterogeneity across the included studies, a subgroup analysis was performed by region (cities), age groups and study quality, in relation to principal outcome variable. The analysis revealed that the prevalence of sleep disturbances was highest in Brazil 28.52 (95 % CI 22.38-35.57) than Peru 15.91 (95 % CI 6.17-35.27). Also, the pooled prevalence of sleep disturbances among infant 56.52 (95 % CI 54.11-58.89) was greater than adolescents 27.11 (95 % CI 16.55-41.09) and adults 24.24 (95 % CI 18.93-30.48) (**Table 3**).

Table 3: Subgroup analyses for the prevalence of sleep disturbances in Latin America

Subgroup	Number of studies	Pooled Prevalence (95 CI%)	I ² (%)
Total	28	27.32 [21.71-33.75]	100
Cities			
Brazil	21	28.52 [22.38-35.57]	100
Chile	1	-	-
Peru	4	15.91 [6.17-35.27]	100
Multicentric	2	44.89 [42.36-47.45]	88
Age group			
Adult	15	24.24 [18.93-30.48]	100
Adolescents	10	27.11 [16.55-41.09]	100
Children	1	-	-
Infant	2	56.52 [54.11-58.89]	78
Study's quality			
Good	12	34.73 [27.07-43.28]	99
Fair	14	24.08 [16.61-33.55]	100
Poor	2	13.38 [10.79-16.49]	100
Infant	2	56.52 [54.11-58.89]	78

3.6-Risk factors

Meta-analysis was possible for sleep disturbances prevalence with three SES factors (Education, income and employment status).

3.6.1-Education and Sleep disturbances

Eight studies [31, 33, 36, 37, 39, 45, 48, 49] evaluated the association between education and prevalence of sleep disturbances as shown in **Fig 5.A**. There was found no association between low education and prevalent sleep disturbances, with a pooled OR of 1.42 (95%CI [0.87-2.29]; $p < 0.01$). However, the meta-analysis showed that the high educated population had a lower prevalence of sleep disturbances (OR 0.83; 95%CI [0.69-0.99]; $p < 0.01$), with a high heterogeneity between studies ($I^2 = 79\%$).

Separating the education analyses by quality of studies did not reveal a significant subgroup effect for sleep disturbances prevalence ($p=0.70$; **Fig 6.A**). Similarly, when the education analyses were separated by cities, no significant subgroup effect for the prevalence of sleep disturbances was observed ($p=0.70$; **Fig 6.B**).

3.6.2-Income and Sleep disturbances

Six studies [32, 33, 35, 38, 39, 46] considered income as a risk factor of sleep disturbances in Latin America. The meta-analysis revealed a significant relationship between low income and the prevalence of sleep disturbances (OR 1.26; 95% CI [1.12-1.42]; $p=0.09$), with moderate heterogeneity between studies ($I^2= 59\%$). However, it did not show a significant association between middle income (OR 1.07; 95% CI [0.78-1.46]; $p<0.01$) or high income (OR 0.76; 95% CI [0.34-1.32]; $p<0.01$) and prevalence of sleep disturbances (**Fig 5.B**).

3.6.3-Work and Sleep disturbances

Data on the relationship between work and sleep disturbances are shown in **Fig 5.C**. The meta-analysis showed a significant relationship between no working and the prevalence of sleep disturbances (OR 2.84; 95% CI [2.14-3.76]; $p=0.09$) with no heterogeneity between studies ($I^2= 0\%$). Similarly, in the pooled analysis, being housewife was associated with high prevalence of sleep disturbances (OR 1.72; 95% CI [1.19-2.48]; $p=0.13$), exhibiting moderate heterogeneity across studies ($I^2= 55\%$).

369

370

371

372

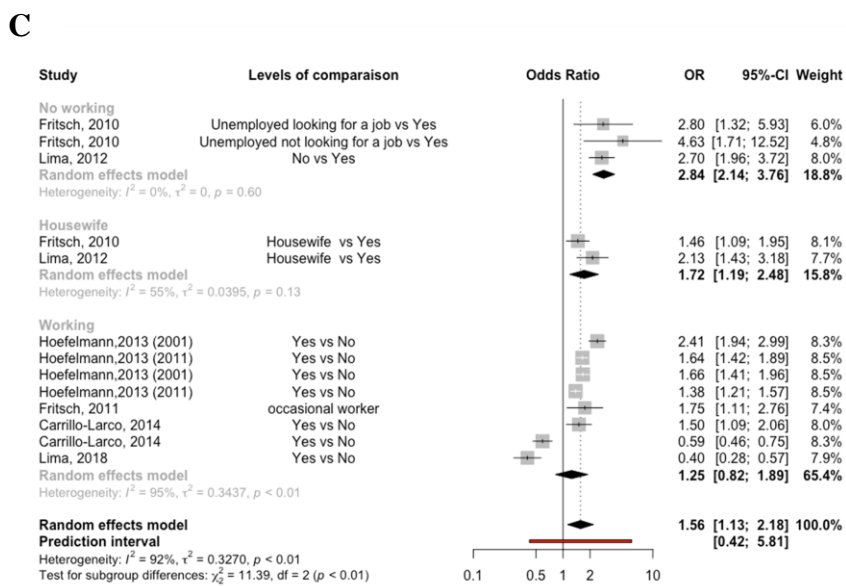
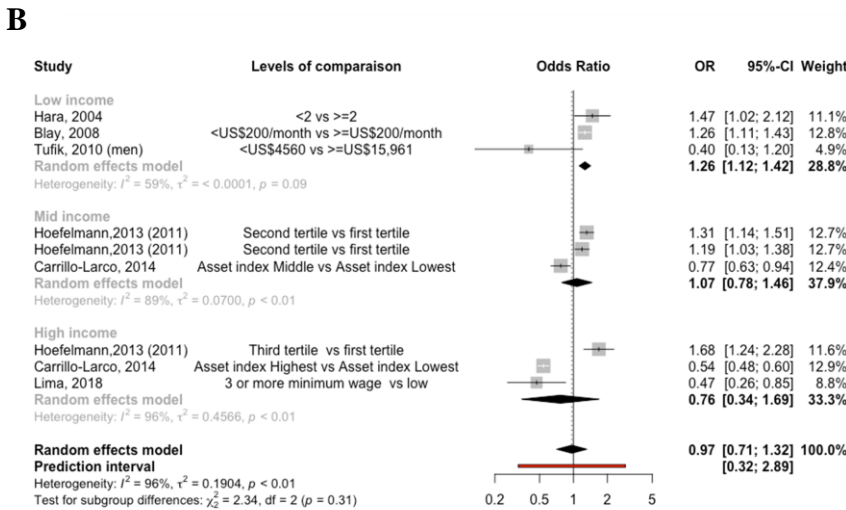
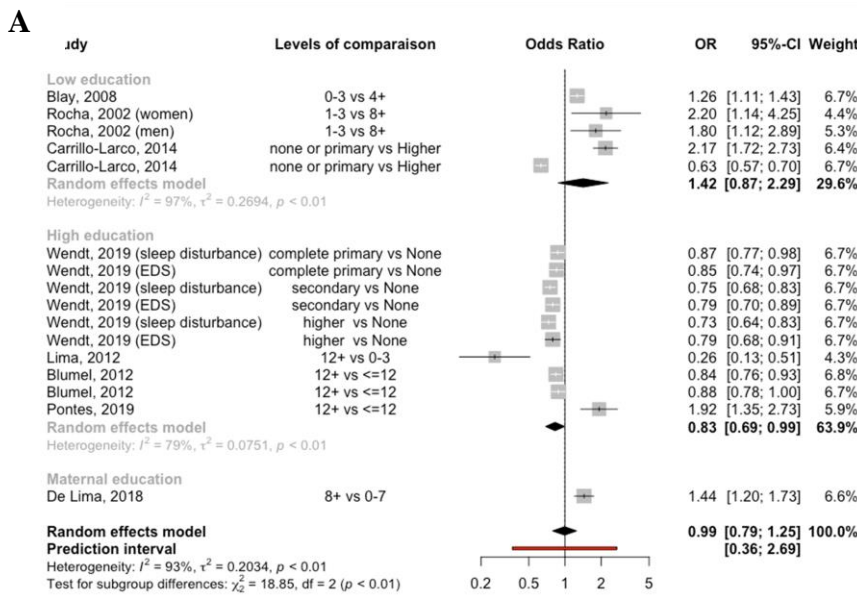


Fig 5: (A) Forest plot for education and sleep disturbances prevalence (compared to the reference group). (B) Forest plot for income and sleep disturbances prevalence (compared to the reference group). (C) Forest plot for employment status and sleep disturbances prevalence (compared to the reference group). Box sizes reflect the weights of studies included in the meta-analysis, horizontal lines are the 95% CIs, and the summary OR are represented by the diamond. OR: odds ratio, CI: confidence interval

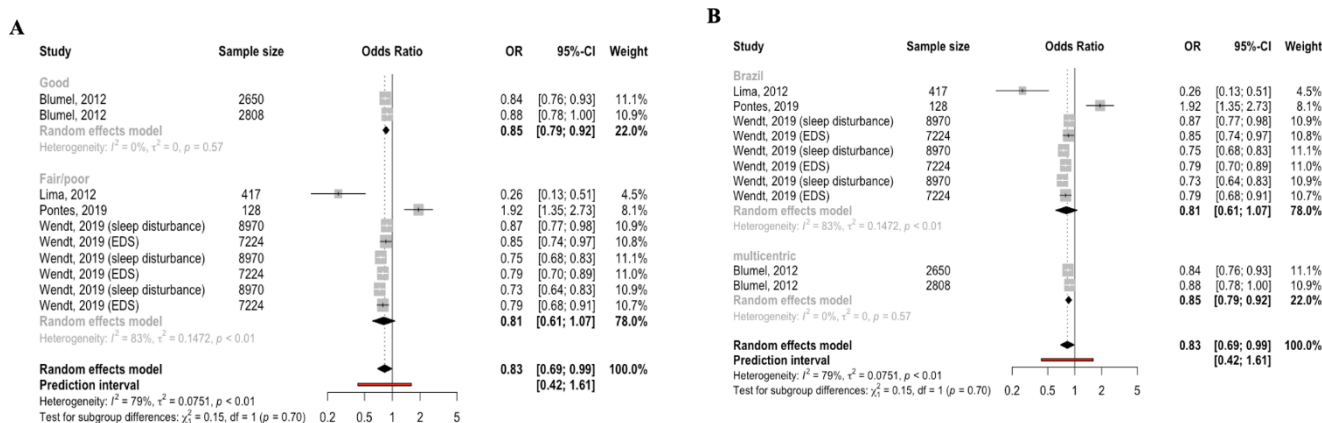


Fig 6: Subgroup analyses to explore sources of heterogeneity in risk factors of sleep disturbances. (A) Forest plot demonstrating that higher education was associated with sleep disturbances prevalence by quality of the study (good vs fair/poor). **(B)** Forest plot demonstrating that higher education was associated with sleep disturbances prevalence by City (Brazil vs multicentric)

4- DISCUSSION

4.1- Detailed summary of findings

The most used determinants were income (monthly personal income, monthly family income, per capita income, annual household income), wealth/assets, number of residents in the household, employment status/occupation, accessed healthcare system and composite indices. The sleep outcomes analyzed were excessive daytime sleepiness (EDS), sleep duration, sleep quality/sleep disturbance, insomnia, obstructive sleep apnea (OSA)/sleep-disordered breathing (SDB) symptoms and bruxism. Higher SES was associated with lower sleep duration. Lower SES was associated with a decrease in sleep quality. EDS was significantly more prevalent in individuals with lower family income and less education. Sleep bruxism was associated with higher education and lower SES was associated with more sleep bruxism. Among the 20 included articles, 12 were rated as fair or poor in study quality. Therefore, a meta-analysis was performed to estimate the prevalence of sleep disturbances in Latin America and the main SES risk factors that could be associated with it. The pooled prevalence using a meta-analysis of the random effects model was 27.32 % (95 % CI 21.71–33.75), with high heterogeneity ($I^2 = 100\%$). The meta-analysis showed that the prevalence of sleep disturbances decreased with

37 high education (OR 0.83; 95%CI [0.75-0.91]; $I^2= 79\%$), while it increased with low income (OR 1.26; 95%CI
38 [1.12-1.42]; $I^2= 59\%$), unemployment (OR 2.84; 95%CI [2.14-3.76]; $I^2= 0\%$) and being housewife (OR 1.72;
39 95%CI [1.19-2.48]; $I^2=55.4\%$).

41 ***4.2- Relationship with public health literature***

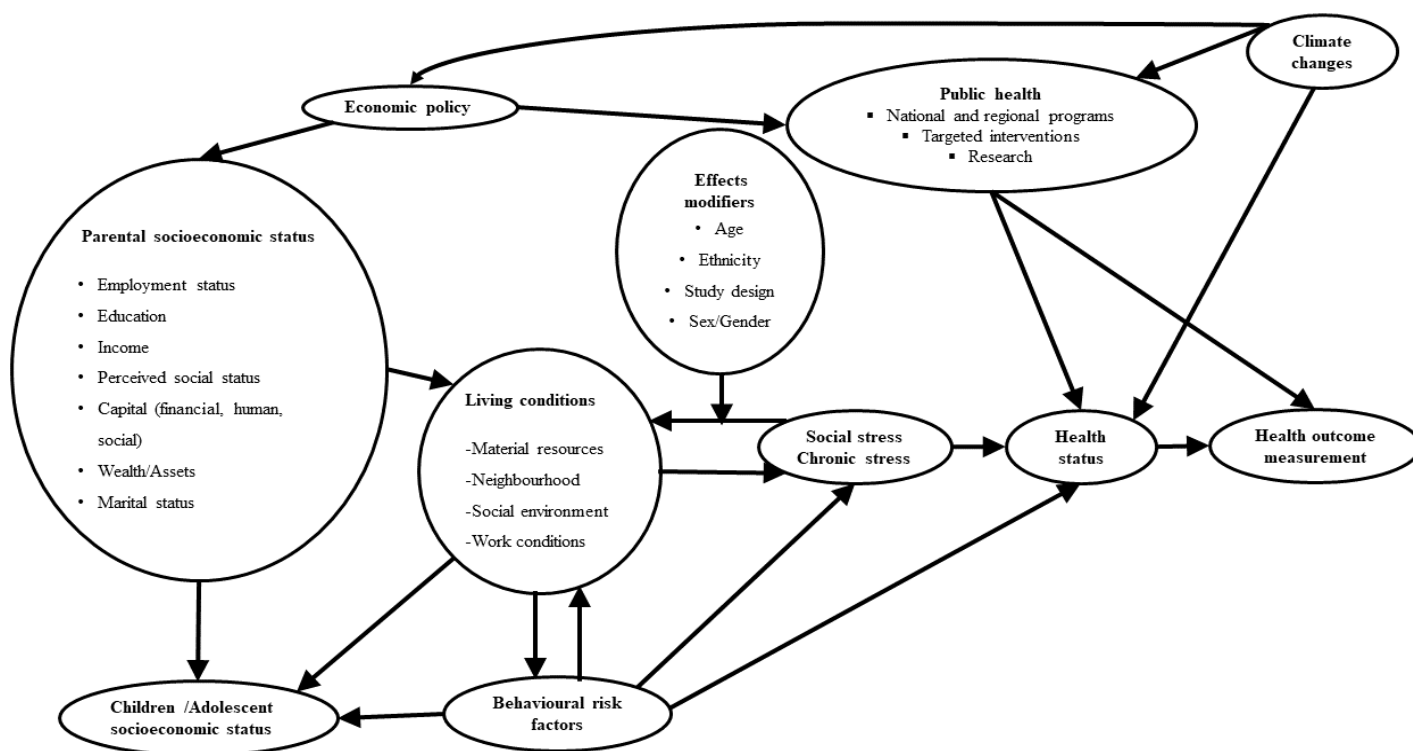
42 Epidemiologic data continues to increase the literature about the influence of sleep on general population's
43 health status. Sleep plays a vital role in several body functions as well as health disparities. Nowadays, scientific
44 community is still investigating external and environmental factors affecting sleep mechanisms, but there are
45 still a lot unknown. Based on current findings, it can be hypothesized that sleep disturbances are associated with
46 socioeconomic status liked suggested many other studies [17, 51–58]. The fact is, gradient of health disparity
47 existing for some diseases like cardiovascular illness, seems the same for sleep. Regardless of world region
48 where investigation is made, sleep disparities are observed because our findings on Latin America supports
49 previous results [17, 51–58]. Our findings are coherent with previous studies elsewhere than Latin America and
50 they are additional arguments in favor of the establishment of a more efficient worldwide program framing sleep
51 health management.

54 ***4.3- The necessity of a multidimensional sleep management***

55 The management of sleep disturbances should be addressed through a multidimensional approach. The majority
56 of studies used to focus on biological and psychological factors influencing sleep while it was only recently that
57 SES was recognized as major determinant of sleep. Recent epidemiological studies performed outside Latin
58 America in different public health contexts, associated sleep with stress [4], work conditions [8], environment
59 [59], employment [17, 60, 61] and revealed latent interactions existing between government policy and public
60 health strategies [22, 55, 62–64]. Obviously, a government's economic policy influences funding of public health
61 programs. Similarly, SES influences directly health status regardless disease assessed through individual's living
62 conditions and their resulting behavioral risk factors and stress. Knowing that sleep disparities can be measured

objectively and quantitatively [6, 7, 50], our suggestion for governments is to invest as soon as possible in preventive management programs of sleep disturbances; before they become uncontrollable. It was already documented how expensive for economy were absenteeism and presenteeism due to sleep disturbances [65, 66], but diverse governments didn't move forward yet with strong regulations to reduce these important losses [67, 68].

In this meta-analysis, there is an unequal distribution of research, with 80% of studies originating from Brazil (Table 1). Even if Brazil is representative of Latin American populations, its public health's context regarding sleep management is not necessarily identical for its neighbors. More research should be performed in other Latin American countries to obtain an accurate overview of sleep disparities in this continent. Our suggestion for scientists, is to not forget that cross-sectional studies are often used to understand determinants of health and establish preliminary evidence [69]; but are useless when it is necessary to consider correlation between theoretical determinant and health outcome. This first meta-analysis on sleep determinants in Latin America, enlighten the high quality of cross-sectional studies published but also the lack of systematic review and longitudinal studies. To support public health strategies, randomized controlled trial and longitudinal studies are required [69].



78

79 **Fig. 7:** Ecoepidemiological model of sleep disturbances

81 **Acknowledgements**

82 **Funding:** This research did not receive any specific grant from funding agencies in the public, commercial, or
83 not-for-profit sectors.

84 **Author contribution:** *FAES:* Conceptualization, Methodology, Validation, Investigation, Data Extraction,
85 Writing - Original and Revised Draft, Review and Editing. *FTS:* Data Extraction, Writing– Original Draft. *RQR:*
86 Data Extraction, Writing– Original Draft. *MC:* Data Extraction, Writing – Original Draft. *SZ:* Methodology,
87 Data Analysis, Meta-Analysis, Writing - Review and Editing. *GCZ:* Writing– Original Draft and Editing.

89 **Conflicts of interest**

90 The authors declare they have nothing to disclose. If only some authors declare conflicts of interest, detail those
91 conflicts and then include the following statement: All other authors declare they have nothing to disclose.

94 **REFERENCES**

- 95 [1] Hale L, Troxel W, Buysse DJ. Sleep Health: An Opportunity for Public Health to Address Health Equity.
96 *Annu Rev Public Health* 2020; **41**: 81–99.
- 97 [2] Grandner MA. Sleep, Health, and Society. *Sleep Med Clin* 2020; **15**: 319–340.
- 98 [3] Carroll JE, Irwin MR, Merkin SS, et al. Sleep and Multisystem Biological Risk: A Population-Based
99 Study. *PLOS ONE* 2015; **10**: e0118467.
- 00 [4] Lo Martire V, Caruso D, Palagini L, et al. Stress & sleep: A relationship lasting a lifetime. *Neurosci*
01 *Biobehav Rev* 2020; **117**: 65–77.
- 02 [5] Vermeiren AP, Willeboordse M, Oosterhoff M, et al. Socioeconomic multi-domain health inequalities
03 in Dutch primary school children. *Eur J Public Health* 2018; **28**: 610–616.
- 04 [6] Etindele Sosso FA. Measuring Sleep Health Disparities with Polysomnography: A Systematic Review
05 of Preliminary Findings. *Clocks Sleep* 2022; **4**: 80–87.
- 06 [7] Etindele Sosso FA, Holmes SD, Weinstein AA. Influence of socioeconomic status on objective sleep
07 measurement: A systematic review and meta-analysis of actigraphy studies. *Sleep Health* 2021; **7**: 417–428.
- 08 [8] Etindele-Sosso FA. Insomnia, excessive daytime sleepiness, anxiety, depression and socioeconomic
09 status among customer service employees in Canada. *Sleep Sci* 2020; **13**: 54–64.
- 10 [9] Berwick DM. The Moral Determinants of Health. *JAMA* 2020; **324**: 225–226.
- 11 [10] Rodriguez JM, Karlamangla AS, Gruenewald TL, et al. Social stratification and allostatic load: shapes
12 of health differences in the MIDUS study in the United States. *J Biosoc Sci* 2019; **51**: 627–644.

- [11] Etindele Sosso FA, Kreidlmayer M, Pearson D, et al. Towards A Socioeconomic Model of Sleep Health among the Canadian Population: A Systematic Review of the Relationship between Age, Income, Employment, Education, Social Class, Socioeconomic Status and Sleep Disparities. *Eur J Investig Health Psychol Educ* 2022; **12**: 1143–1167.
- [12] Grandner MA. Social-ecological model of sleep health. In: *Sleep and Health*. Elsevier, pp. 45–53.
- [13] van de Straat V, Cheval B, Schmidt RE, et al. Early predictors of impaired sleep: a study on life course socioeconomic conditions and sleeping disturbances in older adults. *Aging Ment Health* 2020; **24**: 322–332.
- [14] Papadopoulos D, Sosso FE, Khoury T, et al. Sleep Disturbances Are Mediators Between Socioeconomic Status and Health: a Scoping Review. *Int J Ment Health Addict* 2022; **20**: 480–504.
- [15] Mayne SL, Mitchell JA, Virudachalam S, et al. 0397 Neighborhood Physical and Social Environments and Sleep Among Children and Adolescents: A Systematic Review. *Sleep* 2020; **43**: A152.
- [16] Petrovic D, Haba-Rubio J, Carmeli C, et al. Social inequalities in sleep-disordered breathing: Evidence from the CoLaus|HypnoLaus study. *J Sleep Res* 2019; **28**: e12799.
- [17] Mai QD, Hill TD, Vila-Henninger L, et al. Employment insecurity and sleep disturbance: Evidence from 31 European countries. *J Sleep Res* 2019; **28**: e12763.
- [18] Papadopoulos D, Etindele Sosso FA. Socioeconomic status and sleep health: a narrative synthesis of three decades of empirical research. *J Clin Sleep Med JCSM Off Publ Am Acad Sleep Med*. Epub ahead of print 1 December 2022. DOI: 10.5664/jcsm.10336.
- [19] Wu W, Jiang Y, Wang N, et al. Sleep quality of Shanghai residents: population-based cross-sectional study. *Qual Life Res Int J Qual Life Asp Treat Care Rehabil* 2020; **29**: 1055–1064.
- [20] Visvalingam N, Sathish T, Soljak M, et al. Prevalence of and factors associated with poor sleep quality and short sleep in a working population in Singapore. *Sleep Health* 2020; **6**: 277–287.
- [21] Metse AP, Bowman JA. Prevalence of self-reported suboptimal sleep in Australia and receipt of sleep care: results from the 2017 National Social Survey. *Sleep Health J Natl Sleep Found* 2020; **6**: 100–109.
- [22] Muller D, Paine S-J, Wu LJ, et al. How long do preschoolers in Aotearoa/New Zealand sleep? Associations with ethnicity and socioeconomic position. *Sleep Health* 2019; **5**: 452–458.
- [23] Grandner MA. Chapter 5 - Social-ecological model of sleep health. In: Grandner MA (ed) *Sleep and Health*. Academic Press, pp. 45–53.
- [24] Ribeiro AI, Amaro J, Lisi C, et al. Neighborhood Socioeconomic Deprivation and Allostatic Load: A Scoping Review. *Int J Environ Res Public Health* 2018; **15**: 1092.
- [25] Page MJ, McKenzie JE, Bossuyt PM, et al. The PRISMA 2020 statement: an updated guideline for reporting systematic reviews. *BMJ* 2021; **372**: n71.
- [26] National Institute of Health. Study quality assessment tool National Institutes of Health: Bethesda, MD, USA.
- [27] Barendregt JJ, Doi SA, Lee YY, et al. Meta-analysis of prevalence. *J Epidemiol Community Health* 2013; **67**: 974–978.
- [28] Borenstein M, Higgins JPT, Hedges LV, et al. Basics of meta-analysis: I2 is not an absolute measure of heterogeneity. *Res Synth Methods* 2017; **8**: 5–18.
- [29] Higgins JPT, Thompson SG, Spiegelhalter DJ. A re-evaluation of random-effects meta-analysis. *J R Stat Soc Ser A Stat Soc* 2009; **172**: 137–159.
- [30] Egger M, Davey Smith G, Schneider M, et al. Bias in meta-analysis detected by a simple, graphical test. *BMJ* 1997; **315**: 629–634.
- [31] Rocha FL, Guerra HL, Lima-Costa MFF. Prevalence of insomnia and associated socio-demographic factors in a Brazilian community: the Bambuí study. *Sleep Med* 2002; **3**: 121–126.
- [32] Hara C, Lopes Rocha F, Lima-Costa MFF. Prevalence of excessive daytime sleepiness and associated factors in a Brazilian community: the Bambuí study. *Sleep Med* 2004; **5**: 31–36.
- [33] Blay SL, Andreoli SB, Gastal FL. Prevalence of self-reported sleep disturbance among older adults and the association of disturbed sleep with service demand and medical conditions. *Int Psychogeriatr* 2008; **20**: 582–595.
- [34] Fritsch Montero R, Lahsen Martínez P, Romeo Gómez R, et al. Sleep disorders in the adult population of Santiago of Chile and its association with common psychiatric disorders. *Actas Esp Psiquiatr* 2010; **38**: 358–364.

- [35] Tufik S, Santos-Silva R, Taddei JA, et al. Obstructive sleep apnea syndrome in the Sao Paulo Epidemiologic Sleep Study. *Sleep Med* 2010; **11**: 441–446.
- [36] Blümel JE, Cano A, Mezones-Holguín E, et al. A multinational study of sleep disorders during female mid-life. *Maturitas* 2012; **72**: 359–366.
- [37] Lima MG, Bergamo Francisco PMS, de Azevedo Barros MB. Sleep duration pattern and chronic diseases in Brazilian adults (ISACAMP, 2008/09). *Sleep Med* 2012; **13**: 139–144.
- [38] Hoefelmann LP, Lopes A da S, da Silva KS, et al. Sociodemographic factors associated with sleep quality and sleep duration in adolescents from Santa Catarina, Brazil: what changed between 2001 and 2011? *Sleep Med* 2013; **14**: 1017–1023.
- [39] Carrillo-Larco RM, Bernabé-Ortiz A, Miranda JJ, et al. Peruvians’ sleep duration: analysis of a population-based survey on adolescents and adults. *PeerJ* 2014; **2**: e345.
- [40] Schwartz NG, Rattner A, Schwartz AR, et al. Sleep Disordered Breathing in Four Resource-Limited Settings in Peru: Prevalence, Risk Factors, and Association with Chronic Diseases. *Sleep* 2015; **38**: 1451–1459.
- [41] Schäfer AA, Domingues MR, Dahly DL, et al. Correlates of self-reported weekday sleep duration in adolescents: the 18-year follow-up of the 1993 Pelotas (Brazil) Birth Cohort Study. *Sleep Med* 2016; **23**: 81–88.
- [42] Fulgencio LB, Corrêa-Faria P, Lage CF, et al. Diagnosis of sleep bruxism can assist in the detection of cases of verbal school bullying and measure the life satisfaction of adolescents. *Int J Paediatr Dent* 2017; **27**: 293–301.
- [43] Mota-Veloso I, Celeste RK, Fonseca CP, et al. Effects of attention deficit hyperactivity disorder signs and socio-economic status on sleep bruxism and tooth wear among schoolchildren: structural equation modelling approach. *Int J Paediatr Dent* 2017; **27**: 523–531.
- [44] Netsi E, Santos IS, Stein A, et al. A different rhythm of life: sleep patterns in the first 4 years of life and associated sociodemographic characteristics in a large Brazilian birth cohort. *Sleep Med* 2017; **37**: 77–87.
- [45] de Lima TR, Silva DAS. Association of sleep quality with sociodemographic factors and lifestyle in adolescents from southern Brazil. *World J Pediatr WJP* 2018; **14**: 383–391.
- [46] Lima MG, Barros MB de A, Ceolim MF, et al. Sleep duration, health status, and subjective well-being: a population-based study. *Rev Saude Publica* 2018; **52**: 82.
- [47] Barros MB de A, Lima MG, Ceolim MF, et al. Quality of sleep, health and well-being in a population-based study. *Rev Saúde Pública*; **53**: 82.
- [48] Pontes L da S, Prietsch SOM. Sleep bruxism: population based study in people with 18 years or more in the city of Rio Grande, Brazil. *Rev Bras Epidemiol Braz J Epidemiol* 2019; **22**: e190038.
- [49] Wendt A, Costa CS, Machado AKF, et al. Sleep disturbances and daytime fatigue: data from the Brazilian National Health Survey, 2013. *Cad Saúde Pública*; **35**. Epub ahead of print 11 March 2019. DOI: 10.1590/0102-311X00086918.
- [50] Wendt A, da Silva ICM, Gonçalves H, et al. Sleep parameters measured by accelerometry: descriptive analyses from the 22-year follow-up of the Pelotas 1993 birth cohort. *Sleep Med* 2020; **67**: 83–90.
- [51] Holstein BE, Ammitzbøll J, Damsgaard MT, et al. Difficulties falling asleep among adolescents: Social inequality and time trends 1991-2018. *J Sleep Res* 2020; **29**: e12941.
- [52] Williamson AA, Mindell JA, Hiscock H, et al. Sleep Problem Trajectories and Cumulative Socio-Ecological Risks: Birth to School-Age. *J Pediatr* 2019; **215**: 229-237.e4.
- [53] Sarveswaran G, Arikrishnan K, Krishnamoorthy Y, et al. Prevalence and determinants of poor quality of sleep among adolescents in rural Puducherry, South India. *Int J Adolesc Med Health*; **33**. Epub ahead of print 17 April 2019. DOI: 10.1515/ijamh-2018-0101.
- [54] Ren Y, Liu Y, Meng T, et al. Social-biological influences on sleep duration among adult residents of Northeastern China. *Health Qual Life Outcomes* 2019; **17**: 47.
- [55] Peltzer K, Pengpid S. Prevalence, social and health correlates of insomnia among persons 15 years and older in Indonesia. *Psychol Health Med* 2019; **24**: 757–768.
- [56] Magee C, Gopaldasani V, Bakand S, et al. The Physical Work Environment and Sleep: A Latent Class Analysis. *J Occup Environ Med* 2019; **61**: 1011–1018.
- [57] Doane LD, Breitenstein RS, Beekman C, et al. Early Life Socioeconomic Disparities in Children’s Sleep: The Mediating Role of the Current Home Environment. *J Youth Adolesc* 2019; **48**: 56–70.

- 17 [58] Chen J-H. Experience of Poverty and Problem Sleep in Later Life. *Res Aging* 2019; **41**: 697–722.
- 18 [59] Johnson DA, Billings ME, Hale L. Environmental Determinants of Insufficient Sleep and Sleep
19 Disorders: Implications for Population Health. *Curr Epidemiol Rep* 2018; **5**: 61–69.
- 20 [60] Maeda M, Filomeno R, Kawata Y, et al. Association between unemployment and insomnia-related
21 symptoms based on the Comprehensive Survey of Living Conditions: a large cross-sectional Japanese
22 population survey. *Ind Health* 2019; **57**: 701–710.
- 23 [61] Lee E-S, Park S. Patterns of Change in Employment Status and Their Association with Self-Rated
24 Health, Perceived Daily Stress, and Sleep among Young Adults in South Korea. *Int J Environ Res Public Health*
25 2019; **16**: 4491.
- 26 [62] Sheehan CM, Frochen SE, Walsemann KM, et al. Are U.S. adults reporting less sleep?: Findings from
27 sleep duration trends in the National Health Interview Survey, 2004-2017. *Sleep* 2019; **42**: zsy221.
- 28 [63] Poulain T, Vogel M, Sobek C, et al. Associations Between Socio-Economic Status and Child Health:
29 Findings of a Large German Cohort Study. *Int J Environ Res Public Health* 2019; **16**: 677.
- 30 [64] Chami HA, Bechnak A, Isma'eel H, et al. Sleepless in Beirut: Sleep Difficulties in an Urban
31 Environment With Chronic Psychosocial Stress. *J Clin Sleep Med JCSM Off Publ Am Acad Sleep Med* 2019;
32 **15**: 603–614.
- 33 [65] Sadeghniaat-Haghighi K, Najafi A, Eftekhari S, et al. Insomnia and its association with absenteeism: A
34 cross-sectional study among Iranian nursing team. *Sleep Sci* 2021; **14**: 305–310.
- 35 [66] Hwang J, Cho S-S, Kim JI. Association between insomnia and absenteeism or presenteeism among
36 Korean employees. *Ann Occup Environ Med* 2022; **34**: e41.
- 37 [67] Huyett P, Bhattacharyya N. Incremental health care utilization and expenditures for sleep disorders in
38 the United States. *J Clin Sleep Med JCSM Off Publ Am Acad Sleep Med* 2021; **17**: 1981–1986.
- 39 [68] Wickwire EM. Value-based sleep and breathing: health economic aspects of obstructive sleep apnea.
40 *Fac Rev* 2021; **10**: 40.
- 41 [69] Wang X, Cheng Z. Cross-Sectional Studies: Strengths, Weaknesses, and Recommendations. *Chest* 2020;
42 **158**: S65–S71.
- 43