

1 **Disease-specific variant interpretation highlighted the genetic findings in**  
2 **2325 Japanese patients with retinitis pigmentosa and allied diseases**

3  
4 Kensuke Goto,<sup>#1</sup> Yoshito Koyanagi,<sup>#1,2,3</sup> Masato Akiyama,<sup>2,4</sup> Yusuke Murakami,<sup>2</sup> Masatoshi  
5 Fukushima,<sup>2</sup> Kohta Fujiwara,<sup>2</sup> Hanae Iijima,<sup>5</sup> Mitsuyo Yamaguchi,<sup>5</sup> Mikiko Endo,<sup>5</sup> Kazuki  
6 Hashimoto,<sup>6</sup> Masataka Ishizu,<sup>7</sup> Toshiaki Hirakata,<sup>8</sup> Kei Mizobuchi,<sup>9</sup> Masakazu Takayama,<sup>10</sup>  
7 Junya Ota,<sup>1</sup> Ai Fujita Sajiki,<sup>1</sup> Taro Kominami,<sup>1</sup> Hiroaki Ushida,<sup>1</sup> Kosuke Fujita,<sup>1</sup> Hiroki  
8 Kaneko,<sup>1</sup> Shinji Ueno,<sup>1,11</sup> Takaaki Hayashi,<sup>9</sup> Chikashi Terao,<sup>3</sup> Yoshihiro Hotta,<sup>10</sup> Akira  
9 Murakami,<sup>8</sup> Kazuki Kuniyoshi,<sup>12</sup> Shunji Kusaka,<sup>12</sup> Yuko Wada,<sup>13</sup> Toshiaki Abe,<sup>14</sup> Toru  
10 Nakazawa,<sup>6</sup> Yasuhiro Ikeda,<sup>7</sup> Yukihide Momozawa,<sup>5</sup> Koh-Hei Sonoda,<sup>†2</sup> Koji M.  
11 Nishiguchi<sup>†1</sup>

12 # These authors contributed equally to this manuscript.

13 †Correspondence to Koh-Hei Sonoda & Koji M. Nishiguchi

14

15 1. Department of Ophthalmology, Nagoya University Graduate School of Medicine,  
16 Nagoya, Japan

17 2. Department of Ophthalmology, Graduate School of Medical Sciences, Kyushu  
18 University, Fukuoka, Japan

19 3. Laboratory for Statistical and Translational Genetics, RIKEN Center for Integrative  
20 Medical Sciences, Kanagawa, Japan

21 4. Department of Ocular Pathology and Imaging Science, Graduate School of Medical  
22 Sciences, Kyushu University, Fukuoka, Japan

23 5. Laboratory for Genotyping Development, RIKEN Center for Integrative Medical  
24 Sciences, Kanagawa, Japan

25 6. Department of Ophthalmology, Tohoku University Graduate School of Medicine, Sendai,  
26 Japan

27 7. Department of Ophthalmology, Faculty of Medicine, University of Miyazaki, Miyazaki,  
28 Japan

29 8. Department of Ophthalmology, Juntendo University Graduate School of Medicine,  
30 Tokyo, Japan

31 9. Department of Ophthalmology, The Jikei University School of Medicine, Tokyo, Japan

32 10. Department of Ophthalmology, Hamamatsu University School of Medicine, Shizuoka,  
33 Japan

- 34 11. Department of Ophthalmology, Hirosaki University Graduate School of Medicine,  
35 Hisoraki, Japan
- 36 12. Department of Ophthalmology, Kindai University Faculty of Medicine, Osaka-sayama,  
37 Japan
- 38 13. Yuko Wada Eye Clinic, Sendai, Japan
- 39 14. Division of Clinical Cell Therapy, United Centers for Advanced Research and  
40 Translational Medicine, Tohoku University Graduate School of Medicine, Sendai, Japan  
41
- 42 \*Correspondence:  
43 Koji M. Nishiguchi  
44 Department of Ophthalmology  
45 Nagoya University Graduate School of Medicine  
46 65 Tsurumai-cho, Showa-ku, Nagoya, Aichi, 466-8560, Japan  
47 Tel: 81-52-744-2275; Fax: 81-52-744-2278  
48 Email: [kmn@med.nagoya-u.ac.jp](mailto:kmn@med.nagoya-u.ac.jp)  
49
- 50 Koh-Hei Sonoda  
51 Department of Ophthalmology  
52 Graduate School of Medical Sciences, Kyushu University  
53 3-1-1 Maidashi, Higashi-ku, Fukuoka, 812-8582, Japan  
54 Tel: 81-92-642-5648; Fax: 81-92-642-5663  
55 E-mail: [k.sonoda.a74@m.kyushu-u.ac.jp](mailto:k.sonoda.a74@m.kyushu-u.ac.jp)

56 **Abstract**

57 **Background:** As gene-specific therapy for inherited retinal dystrophy (IRD) advances,  
58 unified variant interpretation across institutes is becoming increasingly important. This  
59 study aims to update the genetic findings of 86 retinitis pigmentosa (RP)–related genes in a  
60 large number of Japanese RP patients by applying the standardized variant interpretation  
61 guidelines for Japanese IRD patients (J-IRD-VI guidelines) built upon ACMG/AMP rules  
62 and assess the contribution of these genes in RP-allied diseases.

63

64 **Methods:** We assessed 2325 probands with RP (n=2155, including n=1204 sequenced  
65 previously with the same sequencing panel) and allied diseases (n=170, all newly  
66 analyzed), including Usher syndrome, Leber congenital amaurosis, and cone-rod dystrophy  
67 (CRD). Target sequencing using a panel of 86 genes was performed. The variants were  
68 interpreted according to the J-IRD-VI guidelines.

69

70 **Results:** A total of 3564 variants were detected, of which 524 variants were interpreted as  
71 pathogenic or likely pathogenic. Among these 524 variants, 280 (53.4%) had been either  
72 undetected or interpreted as variants of unknown significance or benign variants in our  
73 earlier study of 1204 RP patients. This led to a genetic diagnostic rate in 38.6% of RP  
74 patients, with *EYS* accounting for 46.7% of the genetically solved patients, showing a 9%  
75 increase in diagnostic rate from our earlier study. The genetic diagnostic rate for CRD  
76 patients was 28.2%, with RP-related genes significantly contributing over other allied  
77 diseases.

78

79 **Conclusion:** A large-scale genetic analysis using the J-IRD-VI guidelines highlighted the  
80 unique genetic findings for Japanese IRD patients; these findings serve as a foundation for  
81 the clinical application of gene-specific therapies.

## 82 **Introduction**

83 Inherited retinal dystrophy (IRD) is a disorder characterized by the degeneration of  
84 photoreceptors and the retinal pigment epithelium, leading to symptoms such as night  
85 blindness and visual impairment.<sup>1-3</sup> Retinitis pigmentosa (RP, OMIM 268000) is the most  
86 common form of IRD, with a prevalence of approximately 1 in 3000–4000 people; thus, an  
87 estimated 2.5 million people worldwide have RP.<sup>1,4</sup> Although effective treatments for IRD  
88 have been limited in the past, recent advancements in gene/variant-specific therapies  
89 suggest that IRD might now be amenable to interventions.<sup>5</sup> Given the progress of genomic  
90 medicine, there is a growing interest in the standardized interpretation of variants that can  
91 be reproduced by different institutes.

92 Genetic screening studies for RP have reported variable diagnosis rates, in the range of  
93 37.4% to 66.6% in Western countries<sup>6-9</sup> and 29.6% to 72.1% in Asia.<sup>10-13</sup> The rate may be  
94 lower in Japan, ranging from 29.6% to 47.9%,<sup>10,14-16</sup> depending on the report. The variation  
95 in these figures could arise from whether the American College of Medical Genetics and  
96 Genomics and the Association for Molecular Pathology (ACMG/AMP) guidelines<sup>17</sup> were  
97 applied for variant interpretation or how they were applied, as these guidelines require  
98 specification of multiple items that take into account the unique biological and  
99 epidemiological characteristics of each inherited disease.<sup>18</sup> Without predefined guidelines,  
100 variant interpretation can differ substantially between institutes, which may contribute to  
101 the variability in genetic interpretation of a given variant.<sup>19</sup> Japan has a different genetic  
102 architecture of IRD compared to Western countries and even neighboring countries,<sup>14,20,21</sup>  
103 leading the Japanese Retina and Vitreous Society to publish a modified set of guidelines,  
104 the Japanese inherited retinal dystrophy variant interpretation (J-IRD-VI) guidelines. These  
105 guidelines are built upon predefined ACMG/AMP rules based on a thorough discussion  
106 among the expert members of key genetic laboratories and allow a uniform interpretation of  
107 variants tailored specifically for Japanese patients.<sup>22</sup>

108 In our previous collaborative genetic study using a next generation sequencing (NGS) panel  
109 of 86 genes associated with RP, the rate of genetically solved cases (diagnosis rate) in 1204  
110 RP patients was 29.6%.<sup>10</sup> Unfortunately, the ACMG/AMP guidelines was not applied for  
111 variant interpretation and a unique criteria was adopted, which relied heavily on the  
112 interpretation of previous reports, without taking into consideration the quality of the  
113 evidence provided in the literature. In addition, only typical RP phenotype was included in  
114 the study, leaving out the genetic background of allied diseases, which are sometimes

115 difficult to differentiate from RP.  
116 The purpose of this study was to update the genetic findings using the J-IRD-VI guidelines  
117 and expand our assessment to include a larger number of patients, especially those with a  
118 phenotype that overlapped with RP. This study may serve as a foundation for future gene-  
119 variant-specific therapies for IRD in Japan.

## 120 **Materials and methods**

### 121 **Ethic statement and study subjects**

122 This study was conducted in accordance with the principles of the Helsinki Declaration and  
123 was approved by the ethical boards of each institute. All participants provided written  
124 informed consent at their respective recruiting institute. An overview of the study is shown  
125 in figure 1. We collected DNA samples from 2662 patients with IRD from nine Japanese  
126 facilities in the Japan Retinitis Pigmentosa Registry Project (2002–2021), namely Nagoya  
127 University Hospital (n=790), Kyushu University Hospital (n=706), Tohoku University  
128 Hospital (n=336), Yuko Wada Eye Clinic (n=327), Kindai University Hospital (n=203),  
129 University of Miyazaki Hospital and Miyata Eye Hospital (n=112), Juntendo University  
130 Hospital (n=87), The Jikei University Hospital (n=63), and Hamamatsu University Hospital  
131 (n=38). When collecting DNA samples, each sample was assigned an anonymized number  
132 by each institute to ensure that the individual subjects cannot be identified by members  
133 outside of each institute.

134

### 135 **Patient selection**

136 From a total of 2662 patients, we selected for analysis patients with RP and patients with  
137 allied diseases with clinical findings that overlap with RP, including Usher syndrome,  
138 Leber congenital amaurosis (LCA), cone-rod dystrophy (CRD), choroideremia, and Bietti  
139 crystalline dystrophy (BCD). Clinical diagnoses were made by well-trained  
140 ophthalmologists based on symptoms such as visual acuity loss, visual field loss,  
141 photophobia and night blindness, fundus examination, electroretinogram, fundus  
142 autofluorescence images, and optical coherence tomography images. We excluded patients  
143 (n=258) with IRD with substantially different phenotypes from RP, including macular  
144 dystrophy, Best disease, and Stargardt disease. We also excluded related patients (n=80) so  
145 that a single patient represented each family. As a result, we enrolled 2325 probands with  
146 non-syndromic RP (n=2155, including n=1204 we had previously sequenced with the same  
147 sequencing panel<sup>10</sup>) or allied diseases (n=170), such as Usher syndrome (n=32), LCA  
148 (n=15), CRD (n=78), choroideremia (n=11), or BCD (n=34).

149

### 150 **Target sequencing for 86 genes**

151 We used a previously established panel of 86 genes associated with RP and allied  
152 diseases.<sup>10</sup> These genes include 83 genes associated with RP that were registered in the

153 Retinal Information Network (RetNet) as of September 19, 2017, as well as three additional  
154 genes (*CHM*, *CEP290*, and *IMPG1*) that are major causative genes for other IRDs. Our  
155 study was designed to capture the coding regions of the transcripts as well as 2 bp into each  
156 exon-adjacent intron and also include a deep intronic variant, c.2991+1655 A>G, in  
157 *CEP290*. Multiplex polymerase chain reaction (PCR)-based target sequencing was  
158 performed as described previously.<sup>23</sup> Briefly, multiplex PCR was performed by designing  
159 primers covering all coding regions of the 86 genes. Next, a second PCR test was  
160 performed to add dual barcodes to the first PCR product. Finally, the second PCR product  
161 was sequenced using a HiSeq 2500 instrument (Illumina, San Diego, CA) to obtain  $2 \times 151$   
162 bp paired end reads with dual 8 bp barcode sequences.

163

#### 164 **Analysis of sequencing data**

165 Analysis of sequence data was performed as previous reported.<sup>10</sup> Sequencing reads were  
166 demultiplexed using bcl2fastq2 V.2.20 (Illumina), followed by alignment to the human  
167 reference genome (hg19) using Burrows-Wheeler Aligner (V.0.7.17). Post-alignment  
168 processing, including indel realignment, was performed with the Genome Analysis Toolkit  
169 (GATK) (V.3.7), leading to variant calling via HaplotypeCaller and UnifiedGenotyper, and  
170 subsequent integration of variants. Alternative allele frequencies (AF) were calculated  
171 using SAMtools (V.1.6) and genotype variants were selected based on frequency  
172 histograms and quality filtering. The final set of identified variants was annotated using  
173 ANNOVAR (V.3.4) and SnpEff (V.4.3), with the transcripts registered in CCDS Release 24  
174 and refGene. We defined the covered region as a region with bases having  $\geq 20$  sequencing  
175 reads in the target region. The coverage per base was calculated as the number of covered  
176 samples divided by the number of all samples. The cover rate per gene (%) was defined as  
177 the average coverage per base of the target region. We successfully sequenced  $\geq 98.0\%$  of  
178 the targeted regions of the 86 genes in all 2325 samples and used all samples for further  
179 analysis. The average read depth ( $\pm$ SD) was 1410 ( $\pm$ 359) per sample. We called variants in  
180 the regions with  $\geq 20$  read depth, which included 99.65% of the targeted regions (online  
181 supplementary table S1). We confirmed the presence of pathogenic variants through visual  
182 inspection using the integrative genomics viewer (IGV), making manual corrections for  
183 annotations when multiple alternative alleles or single-nucleotide variants with deletions  
184 were identified at the same site. This led to the reassignment of annotations for 10 variants  
185 across four genes (see online supplementary figure S1 and table S2).

186

### 187 **Genotyping of the founder variants in *RPI* and *CYP4V2***

188 In addition to NGS panel of 86 genes, we analyzed each of two variants associated with  
189 IRDs<sup>24-26</sup> in a different way, with *Alu* insertion in *RPI* and c.802-8\_810del17insGC in  
190 *CYP4V2*; these genes are not detectable with our NGS panel. To screen *Alu* insertion in  
191 exon 4 in *RPI* in all patients, we searched for *Alu* sequences in FASTQ files obtained by  
192 NGS using a grep search program, as previously reported.<sup>27</sup> We selected patients for whom  
193 we had either detected *Alu* sequences in at least one read or who were heterozygous for  
194 pathogenic variants in *RPI* as the subjects for genotyping. Genotyping was performed  
195 using an optimized PCR-based method for the selected patients as previously described.<sup>24</sup>  
196 Among the subjects, 23 patients whose genotyping of *Alu* insertion was previously reported  
197 by us<sup>24</sup> were referenced for those results. To screen c.802-8\_810del17insGC in *CYP4V2* in  
198 all patients, we developed a grep search program for FASTQ format files. We searched for  
199 a unique 20-base sequence containing c.802-8\_810del17insGC in *CYP4V2* using the grep  
200 command in Linux (online supplementary table S3), and the AF is calculated as (alternative  
201 allele read count) / {(alternative allele read count) + (reference allele read count)} in all  
202 patients. Allele frequencies ranging from 0.25 to 0.75 were defined as heterozygotes, while  
203 frequencies ranging from 0.85 to 1.0 were defined as homozygotes.

204

### 205 **Variant interpretation**

206 Among the 86 genes in our NGS panel, two genes that had previously been reported as  
207 associated with RP but whose pathogenicity has been questioned by recent studies<sup>28-30</sup> were  
208 excluded from our analysis, resulting in a final set of 84 genes for interpretation of  
209 pathogenicity. We interpreted the variants according to the J-IRD-VI guidelines<sup>22</sup> published  
210 by the Japanese Retina and Vitreous Society. A detailed description of the evaluation  
211 procedures is provided below. The automated application AutoPVS1  
212 (<http://autopvs1.genetics.bgi.com/>)<sup>31</sup> (accessed on 16 August 2022) was used to evaluate  
213 the PVS1 criteria for null variants. As defined in the ACMG guideline criteria for hearing  
214 loss<sup>31</sup>, we defined exons containing null variants with an AF exceeding 0.3% in  
215 the Genome Aggregation Database (gnomAD)<sup>32</sup> as lacking functional significance. For 23  
216 null variants that output errors (as not “null variants”) due to differences in the definition of  
217 the coding region in AutoPVS1, the PVS1 criteria were evaluated manually. To assess the  
218 frequency of variants in general populations (BA1, BS1, PM2), we used the gnomAD total



219 population, the gnomAD population max, the Human Genetic Variation Database (HGVD),  
220 and Tohoku Medical Megabank Organization (ToMMo) 8.3KJPN. If the highest AF in any  
221 of the four databases met the cut-off value, the respective criteria were applied to variants.  
222 BA1 was not applied based on an expert opinion for variants previously reported as being  
223 pathogenic by multiple groups but meeting the BA1 cut-off value (online supplementary  
224 table S4).<sup>33-38</sup> To calculate odds ratios for minor alleles in the PS4 criteria, ToMMo 38KJPN  
225 for autosome and 14KJPN for chromosome X were used as ancestry-matched controls. To  
226 evaluate PM3, we counted the number of probands with heterozygous pathogenic variants  
227 and those with homozygotes from both our subject patients and the prior literature listed in  
228 the Human Genome Mutation Database Professional (HGMD Professional, 2022.2). The  
229 strength of PM3 was assessed by summing the counts of these two sets of probands. In the  
230 computational evidence category (PP3, BP4, BP7), we employed predictive tools:  
231 REVEL<sup>39</sup> for predicting the pathogenicity of missense variants and Splicing AI<sup>40</sup> for  
232 predicting splice site changes. The PP5 criteria were evaluated based on ClinVar (accessed  
233 on 20 August 2022). The BP2 criteria were applied to variants founded in cases with  
234 homozygous pathogenic variants within the same gene.

235

### 236 **Criteria for genetic diagnosis**

237 We performed a genetic diagnosis using the variants regarded as “pathogenic” or “likely  
238 pathogenic” by the J-IRD-VI guidelines, as well as the two founder variants, *Alu* insertion  
239 in *RPI* and c.802-8\_810del17insGC in *CYP4V2*. We applied the genetic inheritance forms  
240 defined in RetNet for each gene, following the classical Mendelian inheritance pattern and  
241 attempted to determine the causative variant and make a genetic diagnosis in each case as  
242 previously reported.<sup>10</sup> If a gene was registered on RetNet in multiple inheritance forms, we  
243 determined the genetic inheritance form of each variant based on the prior literature.

244 Furthermore, when a patient had pathogenic variants in multiple genes leading to a genetic  
245 diagnosis, all the genes were listed as potential causative genes, rather than selecting just  
246 one. Finally, we regarded patients whose causative genes were determined as “solved” and  
247 patients whose causative genes could not be determined as “unsolved”.

## 248 **Results**

### 249 **Results of variants interpretations of 86 genes in 2325 patients**

250 The clinical characteristics of the patients are summarized in table 1. In the RP patients, the  
251 modes of inheritance as obtained from clinical records were as follows: AD in 284 (13.2%),  
252 AR in 410 (19.0%), XL in 34 (1.6%) and sporadic in 1182 (54.8%) (table 1). A  
253 comprehensive list of variant interpretation using J-IRD-VI guidelines is shown in online  
254 supplementary table S5. We identified a total of 3564 variants, including 2143 missense  
255 variants, 169 nonsense variants, 168 frameshift indels, 40 non-frameshift indels, 53  
256 canonical splice site variants, and 973 synonymous variants.

257 The detected variants were interpreted according to the J-IRD-VI guidelines using an in-  
258 house program. As a result, 211 variants were interpreted as pathogenic, 313 variants as  
259 likely pathogenic, 1880 variants as variants of unknown significance (VUS), 516 variants  
260 as likely benign, and 644 variants as benign. Among the 524 variants interpreted as  
261 pathogenic or likely pathogenic, 209 (39.9%), 249 (47.5%), and 290 (55.3%) had not  
262 previously been reported in our earlier study of 1204 patients with typical RP, HGMD, or  
263 ClinVar, yielding 107 new disease-associated variants. This included 71 variants considered  
264 VUS or benign variants in the previous study. At the same time, 118 variants considered  
265 pathogenic or likely pathogenic were reassigned to the VUS or benign categories. Thus,  
266 only 245 out of 363 pathogenic or likely pathogenic variants (67.5%) in the previous study  
267 maintained the same interpretation in the current study.

268

### 269 **Genotyping results of *Alu* insertion in *RPI* and c.802-8\_810del17insGC in *CYP4V2***

270 Two frequent variants in *RPI* and *CYP4V2* are known to be associated with RP and allied  
271 diseases and are missed by the standard analysis pipeline; thus, we analyzed them in a  
272 different way. To look for the known common 328bp *Alu* insertion [c.4052\_4053ins328,  
273 p.(Tyr1352Alafs)] in *RPI*,<sup>24,26</sup> we conducted screening of FASTQ files using a grep search  
274 program<sup>27</sup> in all patients. *Alu* sequences were detected in at least one read for 24 patients.  
275 Then, we selected a total of 138 patients for whom we either detected *Alu* sequences in at  
276 least one read or who were heterozygous for pathogenic variants in *RPI* as the subjects for  
277 genotyping. These samples were further analyzed with a PCR-based method. We found that  
278 24 patients were heterozygous for the *Alu* insertion and 10 were homozygous. Among the  
279 24 patients who were heterozygous carriers of *Alu* insertions, 18 were found to have  
280 another pathogenic variant in *RPI*. As for the splice site variant c.802-8\_810del17insGC in

281 *CYP4V2*, which is associated with BCD<sup>25</sup>, we screened all patients by the searching for a  
282 20-base sequence encompassing the variant region in FASTQ files using software. This  
283 revealed that 22 patients, including 16 with RP and 5 with BCD, were heterozygous and 16,  
284 including 13 with BCD, were homozygous for this change (online supplementary table S6).  
285 Among the 22 patients who were heterozygous, 5 with BCD and 1 with RP were found to  
286 have another pathogenic variant in *CYP4V2*.

287

### 288 **High-frequency pathogenic variants in solved and unsolved patients with RP**

289 Figure 2 summarizes the proportion of causative variants detected in the solved patients  
290 with RP (n=831) and pathogenic or likely pathogenic variants detected in unsolved patients  
291 with RP (n=1324) (figure 2B). In particular, [p.(Ser1653fs), p.(Gly843Glu), and  
292 p.(Tyr2935\*) in *EYS*] and *Alu* insertion [p.(Tyr1352Alafs)] in *RP1* were found in 27.2%  
293 (226/831), 20.1% (167/831), 11.9% (99/831), and 2.9% (24/831) of solved patients,  
294 accounting for 18.2%, 13.2%, 8.1%, and 2.3% of the total alleles of causative variants,  
295 respectively (figure 2A). Among unsolved patients, 37.0% (490/1324) were found to carry  
296 pathogenic or likely pathogenic variants. Specifically, [p.(Gly843Glu), p.(Ser1653fs), and  
297 p.(Tyr2935\*) in *EYS*] were detected in 7.3% (96/1324), 5.0% (66/1324), and 3.0%  
298 (40/1324) of unsolved patients, accounting for 16.4%, 11.2%, and 6.8% of the total alleles  
299 of pathogenic or likely pathogenic variants carried in unsolved patients, respectively (figure  
300 2B).

301

### 302 **Genetic diagnosis with the detected pathogenic variants**

303 The overall genetic diagnosis rate was 38.4% (892/2325) for RP and allied diseases (figure  
304 3). The figure was 38.6% (831/2155) for RP, 25.0% (8/32) for Usher syndrome, 6.7%  
305 (1/15) for LCA, 28.2% (22/78) for CRD, 63.6% (7/11) for choroideremia, and 67.6%  
306 (23/34) for BCD. The results for causative genes and variants for a total of 2325 patients  
307 are summarized in online supplementary table S7. Of note, we detected 15 patients with  
308 pathogenic or likely pathogenic variants in two genes, including 14 patients with RP and  
309 one patient with choroideremia (online supplementary table S8).

310 Among the typical RP patients, 831 were genetically diagnosed with 320 pathogenic or  
311 likely pathogenic variants in 49 genes (figure 4A). Pathogenic variants in *EYS*, which has  
312 previously been reported to be the major gene responsible for RP in the Japanese  
313 population, explained RP in nearly half (388/831, 46.7%) of solved patients, followed by

314 *USH2A* (67/831, 8.1%), *RHO* with dominant inheritance (41/831, 4.9%), *RPI* with  
315 recessive inheritance (36/831, 4.3%), and *RPGR* (34/831, 4.1%). The breakdown of solved  
316 cases by inheritance pattern based on clinical information was 47.2%, 43.9%, 33.6%, and  
317 41.2% for AD, AR, sporadic, and XL, respectively. When separately analyzed by  
318 inheritance pattern of each gene reported in RetNet, *EYS* (388/605, 64.1%) and *USH2A*  
319 (67/605, 11.1%) accounted for 75.2% of patients diagnosed with ARRP (figure 4B).  
320 Meanwhile, three genes (*RHO*, *RPI*, and *PRPH2*) explained more than half of solved cases  
321 with ADRP (91/164, 55.5%). In X-linked RP (XLRP), pathogenic variants in *RPGR* were  
322 found in the large majority of solved patients (n=34/50, 68.0%).  
323 In Usher syndrome, a total of eight of 32 patients (25.0%) were genetically diagnosed. Six  
324 patients had pathogenic variants in *USH2A* and two patients had pathogenic variants in  
325 *CLRN1*. In LCA, only one of 15 patients was genetically diagnosed, while no pathogenic  
326 variant was detected in the remaining 14 (93.3%) patients, consistent with a previous report  
327 indicating little overlap between genes linked to RP and LCA in Japan.<sup>15 41</sup> In CRD,  
328 variants in *CRX*, *PRPH2*, and *RPI* were the most commonly linked to the disease, each  
329 accounting for 7.7%, 5.1%, and 5.1% of the disease, respectively. Of the 11 patients  
330 diagnosed with choroideremia, pathogenic variants in *CHM* were detected in six patients  
331 (54.5%). Variants in the *CYP4V2* gene explained 67.6% (23/34) of patients with BCD, and  
332 c.802-8\_810del17insGC was detected in 5 compound heterozygotes and 14 homozygotes.

### 333 **Discussion**

334 In this study, we performed target sequencing in 2155 patients with RP and an additional  
335 170 patients with allied diseases. This is nearly double the number of RP patients as in our  
336 previous study, although 1204 patients from the previous study were also included in the  
337 present one.<sup>10</sup> We interpreted the detected variants according to the J-IRD-VI guidelines  
338 which is based upon specified ACMG/AMP rules and tailored explicitly for IRD in the  
339 Japanese population.<sup>22</sup> Our results showed that the genetic diagnosis rate was 38.6% in the  
340 RP patients, which is higher than the corresponding rate of 29.6% in our previous work,<sup>10</sup>  
341 which adopted a different variant interpretation pipeline. Our findings are supported by the  
342 diagnostic contribution of 107 newly assigned variants not reported in ClinVar, HGMD, or  
343 our previous work, which comprised 20.4% of all pathogenic or likely pathogenic variants  
344 detected in this study. In addition, extra genotyping of common *Alu* insertion in *RPI* and a  
345 splice site variant in *CYP4V2*, both missed by our automated NGS analysis, contributed to  
346 the increased diagnosis rate.

347 Although 1204 patients examined in our previous work were also included in this study,  
348 only 67.5% of pathogenic or likely pathogenic variants had the same interpretation in the  
349 earlier work and this one. This could largely be attributed to the difference in interpretation  
350 criteria; the previous study adopted variant interpretation posted in ClinVar and HGMD. As  
351 a result, the rate of contribution of the most prevalent disease genes changed considerably.  
352 In particular, the proportion of *EYS* jumped from 30.9% to 46.7% in the current study,  
353 which may be explained in part by the recent establishment of a very frequent variant  
354 [p.(Gly843Glu) in *EYS*] as pathogenic.<sup>36</sup> Additionally, through a stringent application of J-  
355 IRD-VI guidelines, nearly all variants in *RPILI*, which was previously the fifth most  
356 prevalent RP-related gene in Japan and accounted for 4.8% of all solved RP cases, were  
357 excluded in this study due to the high AF in the general population as defined in the J-IRD-  
358 VI guidelines. Consequently, the current study has greatly enhanced the understanding of  
359 the genetic architecture of Japanese RP patients.

360 This study also found that 37.0% of the unsolved RP patients carried pathogenic or likely  
361 pathogenic recessive variants in one of the 86 RP-related genes. The AF of many of these  
362 variants was higher than would be expected in the general population. For example, the AF  
363 of p.(Ser1653fs) was 2.49% in unsolved RP patients and is 0.43% in the general population.  
364 This may indicate that some of these heterozygous variants play a role in the disease in  
365 unsolved cases and that there is a yet-unidentified pathogenic recessive variant *in trans* that

366 escaped the NGS panel sequence and standard analysis pipeline. Indeed, in an earlier  
367 analysis, we carried out a genome-wide association study of RP, which showed a peak in  
368 the *EYS* locus that surpassed genome-wide significance ( $P=3.79\times 10^{-10}$ ) and for which no  
369 corresponding exonic variant in *EYS* was linked,<sup>36</sup> indicating that there may be at least one  
370 more undiscovered high-frequency variant in this gene. Furthermore, through long read  
371 sequencing of 15 heterozygous carriers of an *EYS* pathogenic variant, we identified a large  
372 structural variant encompassing multiple exons in *EYS* in 2 cases (13.3%),<sup>42</sup> suggesting the  
373 presence of undiscovered structural variants. Nevertheless, a more complex non-Mendelian  
374 inheritance factor may also complicate genetic diagnosis,<sup>43-45</sup> although the degree of its  
375 importance in the context of overall genetic diagnosis remains largely unknown.  
376 This study reports genetic analysis results of IRD cases with phenotypic overlap with RP in  
377 a somewhat limited number of patients. We found a significant contribution of RP-related  
378 genes in the genetic diagnosis rate of CRD (22 of 78 patients, 28.2%), although the figure  
379 was smaller than for RP (38.6%). Unlike RP, variants in *CRX* were the most frequent causes  
380 of CRD and *EYS* variants accounted for the disease in only 3.8% of cases. This was in  
381 contrast to patients with BCD or choroideremia, both rarely diagnosed as RP, in which  
382 variants in *CYP4V2* and *CHM*, respectively, explained most patients. Meanwhile, we  
383 reached genetic diagnosis in only one of 15 patients with LCA, consistent with previous  
384 reports indicating that genes causing RP and LCA are largely different in the Japanese  
385 population.<sup>15 41</sup> Nevertheless, these findings are important in the era of genomic medicine  
386 because many emerging treatments for IRD are developed for each disease gene with less  
387 emphasis on the clinical diagnosis itself; thus, understanding the phenotypic spectrum of  
388 each disease gene is critical for the clinical application of these treatments.  
389 There several limitations to this study. First, the J-IRD-VI guidelines used for variant  
390 interpretation are customized for and validated in only Japanese IRD patients. For example,  
391 mainly Japanese databases were designed to assess the rarity or enrichment of a variant in  
392 question. This means that the same analysis pipeline may not be applicable to countries  
393 outside Japan, even neighboring Asian countries. Nevertheless, since Japan consists of  
394 islands geographically isolated from elsewhere, it is unavoidable that there will be unique  
395 criteria for a sensitive and specific genetic diagnosis. Second, the RP-related genes  
396 analyzed in the current study were selected based on those reported as causing non-  
397 syndromic RP in RetNet as of 2017. They are not updated, nor do they comprehensively  
398 cover genes reported for phenotypically related diseases such as CRD or LCA;

399 nevertheless, important novel RP-associated genes have not been reported in Japanese since  
400 2017. It is likely that adopting whole exome sequencing or whole genome sequencing  
401 would lead to an increased diagnostic rate, particularly in non-RP cases. Lastly, the number  
402 of non-RP cases analyzed was too small to reach any conclusions. Nevertheless, the data  
403 are sufficient to determine that there is a significant overlap between genes in RP and CRD  
404 and that observing this is rare in some genes but more frequent in other genes, such as *CRX*,  
405 *PRPH2*, or *RPI*.

406 In conclusion, our study stringently applied IRD-specific ACMG/AMP rules intended to  
407 unify the genetic diagnosis of the disease within Japan in a large number of patients with  
408 RP and allied diseases. This allowed us to substantially update the genetic background of  
409 Japanese RP patients by detecting many new disease-associated variants. The results may  
410 serve as an important foundation for developing future gene- or variant-specific treatments.

411 **Declarations**

412 **Ethics approval**

413 This study was approved by the ethics committees of all the collaborating hospitals and was  
414 conducted in accordance with the tenets of the Declaration of Helsinki on biomedical  
415 research involving human subjects. Written informed consent was obtained from all  
416 subjects prior to participation in the study.

417

418 **Patient consent for publication**

419 Not required.

420

421 **Availability of data and materials**

422 All data relevant to the study are included in the article or uploaded as supplementary  
423 information.

424

425 **Competing interests**

426 KMN reports grants from JCR Pharmaceuticals Co., Ltd., Sysmex Inc., and Novartis  
427 Pharma Co., Ltd., consulting fees from Sysmex Inc. and Novartis Pharma Co., Ltd., and  
428 Lecture fees from Sysmex Inc., Novartis Pharma Co., Ltd. and Janssen Co., Ltd.. KMN has  
429 patents related to gene therapy for retinitis pigmentosa. In addition, KMN is an advisory  
430 board member of Sysmex Inc. and Novartis Pharma Co., Ltd..

431

432 **Authors' contributions**

433 KG, YK, MA, YI, K-HS, and KMN designed the study. KG, YK, MA, YMu, MF, KFujiw,  
434 KH, MI, THi, KM, MT, JO, AFS, TK, HU, HK, SU, THa, YH, AM, KK, SK, YW, TA, TN,  
435 YI, K-HS, and KMN collected the samples and clinical data. KG, YK, HI, MY, ME, KFujit,  
436 CT, and YMo performed the experiments and analyzed the data. KG, YK, MA, YMo, K-  
437 HS, and KMN contributed to the manuscript preparation and editing. All authors  
438 contributed to study conception and design, data interpretation, and approved the final  
439 manuscript.

440

441 **Acknowledgements**

442 The study was supported by the Japan Retinitis Pigmentosa Registry Project and grants  
443 from Japan Agency for Medical Research and Development (23ek0109632 to YI,



444 23ym0126071h0002 and 23ek0109660h0001 to KMN), Japan Society for the Promotion of  
445 Science (20K23005 and 22K16969 to YK, 22K09831 to SU, 21K09756 to THa, 22K09825  
446 to KK, and 23H03059 to KMN), Japanese Retinitis Pigmentosa Society (JRPS) Research  
447 Grant to YK, and Takayanagi Retina Research Award to YK. We acknowledge the  
448 Laboratory for Genotyping Development in RIKEN and the RIKEN-IMS Genome  
449 Platform.

450

451 **References**

- 452 1. Hartong DT, Berson EL, Dryja TP. Retinitis pigmentosa. *Lancet* 2006;368(9549):1795-  
453 809.
- 454 2. Campochiaro PA, Mir TA. The mechanism of cone cell death in Retinitis Pigmentosa. *Prog*  
455 *Retin Eye Res* 2018;62:24-37.
- 456 3. Sancho-Pelluz J, Arango-Gonzalez B, Kustermann S, Romero FJ, van Veen T, Zrenner E,  
457 Ekström P, Paquet-Durand F. Photoreceptor cell death mechanisms in inherited retinal  
458 degeneration. *Mol Neurobiol* 2008;38(3):253-69.
- 459 4. Dias MF, Joo K, Kemp JA, Fialho SL, da Silva Cunha A, Jr., Woo SJ, Kwon YJ. Molecular  
460 genetics and emerging therapies for retinitis pigmentosa: Basic research and clinical  
461 perspectives. *Prog Retin Eye Res* 2018;63:107-31.
- 462 5. Russell S, Bennett J, Wellman JA, Chung DC, Yu ZF, Tillman A, Wittes J, Pappas J, Elci  
463 O, McCague S, Cross D, Marshall KA, Walshire J, Kehoe TL, Reichert H, Davis M,  
464 Raffini L, George LA, Hudson FP, Dingfield L, Zhu X, Haller JA, Sohn EH, Mahajan  
465 VB, Pfeifer W, Weckmann M, Johnson C, Gewaily D, Drack A, Stone E, Wachtel K,  
466 Simonelli F, Leroy BP, Wright JF, High KA, Maguire AM. Efficacy and safety of  
467 voretigene neparvovec (AAV2-hRPE65v2) in patients with RPE65-mediated  
468 inherited retinal dystrophy: a randomised, controlled, open-label, phase 3 trial. *Lancet*  
469 2017;390(10097):849-60.
- 470 6. Stone EM, Andorf JL, Whitmore SS, DeLuca AP, Giacalone JC, Streb LM, Braun TA,  
471 Mullins RF, Scheetz TE, Sheffield VC, Tucker BA. Clinically Focused Molecular  
472 Investigation of 1000 Consecutive Families with Inherited Retinal Disease.  
473 *Ophthalmology* 2017;124(9):1314-31.
- 474 7. Colombo L, Maltese PE, Castori M, El Shamieh S, Zeitz C, Audo I, Zulian A, Marinelli  
475 C, Benedetti S, Costantini A, Bressan S, Percio M, Ferri P, Abeshi A, Bertelli M,  
476 Rossetti L. Molecular Epidemiology in 591 Italian Proband With Nonsyndromic  
477 Retinitis Pigmentosa and Usher Syndrome. *Invest Ophthalmol Vis Sci* 2021;62(2):13.
- 478 8. Goetz KE, Reeves MJ, Gagadam S, Blain D, Bender C, Lwin C, Naik A, Tumminia SJ,  
479 Hufnagel RB. Genetic testing for inherited eye conditions in over 6,000 individuals  
480 through the eyeGENE network. *Am J Med Genet C Semin Med Genet*  
481 2020;184(3):828-37.
- 482 9. Weisschuh N, Obermaier CD, Battke F, Bernd A, Kuehlewein L, Nasser F, Zobor D,

- 483 Zrenner E, Weber E, Wissinger B, Biskup S, Stingl K, Kohl S. Genetic architecture  
484 of inherited retinal degeneration in Germany: A large cohort study from a single  
485 diagnostic center over a 9-year period. *Hum Mutat* 2020;41(9):1514-27.
- 486 10. Koyanagi Y, Akiyama M, Nishiguchi KM, Momozawa Y, Kamatani Y, Takata S, Inai C,  
487 Iwasaki Y, Kumano M, Murakami Y, Omodaka K, Abe T, Komori S, Gao D, Hirakata  
488 T, Kurata K, Hosono K, Ueno S, Hotta Y, Murakami A, Terasaki H, Wada Y,  
489 Nakazawa T, Ishibashi T, Ikeda Y, Kubo M, Sonoda KH. Genetic characteristics of  
490 retinitis pigmentosa in 1204 Japanese patients. *J Med Genet* 2019;56(10):662-70.
- 491 11. Gao FJ, Li JK, Chen H, Hu FY, Zhang SH, Qi YH, Xu P, Wang DD, Wang LS, Chang Q,  
492 Zhang YJ, Liu W, Li W, Wang M, Chen F, Xu GZ, Wu JH. Genetic and Clinical  
493 Findings in a Large Cohort of Chinese Patients with Suspected Retinitis Pigmentosa.  
494 *Ophthalmology* 2019;126(11):1549-56.
- 495 12. Kim YJ, Kim YN, Yoon YH, Seo EJ, Seo GH, Keum C, Lee BH, Lee JY. Diverse Genetic  
496 Landscape of Suspected Retinitis Pigmentosa in a Large Korean Cohort. *Genes*  
497 (*Basel*) 2021;12(5)
- 498 13. Chen TC, Huang DS, Lin CW, Yang CH, Yang CM, Wang VY, Lin JW, Luo AC, Hu FR,  
499 Chen PL. Genetic characteristics and epidemiology of inherited retinal degeneration  
500 in Taiwan. *NPJ Genom Med* 2021;6(1):16.
- 501 14. Numa S, Oishi A, Higasa K, Oishi M, Miyata M, Hasegawa T, Ikeda HO, Otsuka Y,  
502 Matsuda F, Tsujikawa A. EYS is a major gene involved in retinitis pigmentosa in  
503 Japan: genetic landscapes revealed by stepwise genetic screening. *Sci Rep*  
504 2020;10(1):20770.
- 505 15. Suga A, Yoshitake K, Minematsu N, Tsunoda K, Fujinami K, Miyake Y, Kuniyoshi K,  
506 Hayashi T, Mizobuchi K, Ueno S, Terasaki H, Kominami T, Nao IN, Mawatari G,  
507 Mizota A, Shinoda K, Kondo M, Kato K, Sekiryu T, Nakamura M, Kusuhara S,  
508 Yamamoto H, Yamamoto S, Mochizuki K, Kondo H, Matsushita I, Kameya S,  
509 Fukuchi T, Hatase T, Horiguchi M, Shimada Y, Tanikawa A, Yamamoto S, Miura G,  
510 Ito N, Murakami A, Fujimaki T, Hotta Y, Tanaka K, Iwata T. Genetic characterization  
511 of 1210 Japanese pedigrees with inherited retinal diseases by whole-exome  
512 sequencing. *Hum Mutat* 2022;43(12):2251-64.
- 513 16. Maeda A, Yoshida A, Kawai K, Arai Y, Akiba R, Inaba A, Takagi S, Fujiki R, Hiramami Y,  
514 Kurimoto Y, Ohara O, Takahashi M. Development of a molecular diagnostic test for  
515 Retinitis Pigmentosa in the Japanese population. *Jpn J Ophthalmol* 2018;62(4):451-

- 516 57.
- 517 17. Richards S, Aziz N, Bale S, Bick D, Das S, Gastier-Foster J, Grody WW, Hegde M, Lyon  
518 E, Spector E, Voelkerding K, Rehm HL. Standards and guidelines for the  
519 interpretation of sequence variants: a joint consensus recommendation of the  
520 American College of Medical Genetics and Genomics and the Association for  
521 Molecular Pathology. *Genet Med* 2015;17(5):405-24.
- 522 18. Oza AM, DiStefano MT, Hemphill SE, Cushman BJ, Grant AR, Siegert RK, Shen J,  
523 Chapin A, Boczek NJ, Schimmenti LA, Murry JB, Hasadsri L, Nara K, Kenna M,  
524 Booth KT, Azaiez H, Griffith A, Avraham KB, Kremer H, Rehm HL, Amr SS, Abou  
525 Tayoun AN. Expert specification of the ACMG/AMP variant interpretation  
526 guidelines for genetic hearing loss. *Hum Mutat* 2018;39(11):1593-613.
- 527 19. Britten-Jones AC, Gocuk SA, Goh KL, Huq A, Edwards TL, Ayton LN. The Diagnostic  
528 Yield of Next Generation Sequencing in Inherited Retinal Diseases: A Systematic  
529 Review and Meta-analysis. *Am J Ophthalmol* 2023;249:57-73.
- 530 20. Hosono K, Ishigami C, Takahashi M, Park DH, Hiramami Y, Nakanishi H, Ueno S, Yokoi  
531 T, Hikoya A, Fujita T, Zhao Y, Nishina S, Shin JP, Kim IT, Yamamoto S, Azuma N,  
532 Terasaki H, Sato M, Kondo M, Minoshima S, Hotta Y. Two novel mutations in the  
533 EYS gene are possible major causes of autosomal recessive retinitis pigmentosa in  
534 the Japanese population. *PLoS One* 2012;7(2):e31036.
- 535 21. Iwanami M, Oshikawa M, Nishida T, Nakadomari S, Kato S. High prevalence of  
536 mutations in the EYS gene in Japanese patients with autosomal recessive retinitis  
537 pigmentosa. *Invest Ophthalmol Vis Sci* 2012;53(2):1033-40.
- 538 22. Fujinami KN, K. M.; Oishi, A.; Akiyama, M.; Ikeda, Y. Specification of Variant  
539 Interpretation Guidelines for Inherited Retinal Dystrophy in Japan. *Jxiv* 2023
- 540 23. Momozawa Y, Akiyama M, Kamatani Y, Arakawa S, Yasuda M, Yoshida S, Oshima Y,  
541 Mori R, Tanaka K, Mori K, Inoue S, Terasaki H, Yasuma T, Honda S, Miki A, Inoue  
542 M, Fujisawa K, Takahashi K, Yasukawa T, Yanagi Y, Kadonosono K, Sonoda KH,  
543 Ishibashi T, Takahashi A, Kubo M. Low-frequency coding variants in CETP and CFB  
544 are associated with susceptibility of exudative age-related macular degeneration in  
545 the Japanese population. *Hum Mol Genet* 2016;25(22):5027-34.
- 546 24. Nishiguchi KM, Fujita K, Ikeda Y, Kunikata H, Koyanagi Y, Akiyama M, Abe T, Wada  
547 Y, Sonoda KH, Nakazawa T. A founder Alu insertion in RP1 gene in Japanese patients  
548 with retinitis pigmentosa. *Jpn J Ophthalmol* 2020;64(4):346-50.

- 549 25. Wada Y, Itabashi T, Sato H, Kawamura M, Tada A, Tamai M. Screening for mutations in  
550 CYP4V2 gene in Japanese patients with Bietti's crystalline corneoretinal dystrophy.  
551 *Am J Ophthalmol* 2005;139(5):894-9.
- 552 26. Nikopoulos K, Cisarova K, Quinodoz M, Koskiniemi-Kuendig H, Miyake N, Farinelli P,  
553 Rehman AU, Khan MI, Prunotto A, Akiyama M, Kamatani Y, Terao C, Miya F, Ikeda  
554 Y, Ueno S, Fuse N, Murakami A, Wada Y, Terasaki H, Sonoda KH, Ishibashi T, Kubo  
555 M, Cremers FPM, Kutalik Z, Matsumoto N, Nishiguchi KM, Nakazawa T, Rivolta C.  
556 A frequent variant in the Japanese population determines quasi-Mendelian  
557 inheritance of rare retinal ciliopathy. *Nat Commun* 2019;10(1):2884.
- 558 27. Won D, Hwang JY, Shim Y, Byeon SH, Lee J, Lee CS, Kim M, Lim HT, Choi JR, Lee  
559 ST, Han J. In Silico identification of a common mobile element insertion in exon 4 of  
560 RP1. *Sci Rep* 2021;11(1):13381.
- 561 28. de Bruijn SE, Fiorentino A, Ottaviani D, Fanucchi S, Melo US, Corral-Serrano JC,  
562 Mulders T, Georgiou M, Rivolta C, Pontikos N, Arno G, Roberts L, Greenberg J,  
563 Albert S, Gilissen C, Aben M, Rebello G, Mead S, Raymond FL, Corominas J, Smith  
564 CEL, Kremer H, Downes S, Black GC, Webster AR, Inglehearn CF, van den Born LI,  
565 Koenekoop RK, Michaelides M, Ramesar RS, Hoyng CB, Mundlos S, Mhlanga MM,  
566 Cremers FPM, Cheetham ME, Roosing S, Hardcastle AJ. Structural Variants Create  
567 New Topological-Associated Domains and Ectopic Retinal Enhancer-Gene Contact  
568 in Dominant Retinitis Pigmentosa. *Am J Hum Genet* 2020;107(5):802-14.
- 569 29. Jin ZB, Mandai M, Homma K, Ishigami C, Hiramami Y, Nao IN, Takahashi M. Allelic copy  
570 number variation in FSCN2 detected using allele-specific genotyping and multiplex  
571 real-time PCRs. *Invest Ophthalmol Vis Sci* 2008;49(9):3799-805.
- 572 30. Zhang Q, Li S, Xiao X, Jia X, Guo X. The 208delG mutation in FSCN2 does not associate  
573 with retinal degeneration in Chinese individuals. *Invest Ophthalmol Vis Sci*  
574 2007;48(2):530-3.
- 575 31. Xiang J, Peng J, Baxter S, Peng Z. AutoPVS1: An automatic classification tool for PVS1  
576 interpretation of null variants. *Hum Mutat* 2020;41(9):1488-98.
- 577 32. Lek M, Karczewski KJ, Minikel EV, Samocha KE, Banks E, Fennell T, O'Donnell-Luria  
578 AH, Ware JS, Hill AJ, Cummings BB, Tukiainen T, Birnbaum DP, Kosmicki JA,  
579 Duncan LE, Estrada K, Zhao F, Zou J, Pierce-Hoffman E, Berghout J, Cooper DN,  
580 Deflaux N, DePristo M, Do R, Flannick J, Fromer M, Gauthier L, Goldstein J, Gupta  
581 N, Howrigan D, Kiezun A, Kurki MI, Moonshine AL, Natarajan P, Orozco L, Peloso

- 582 GM, Poplin R, Rivas MA, Ruano-Rubio V, Rose SA, Ruderfer DM, Shakir K,  
583 Stenson PD, Stevens C, Thomas BP, Tiao G, Tusie-Luna MT, Weisburd B, Won HH,  
584 Yu D, Altshuler DM, Ardissino D, Boehnke M, Danesh J, Donnelly S, Elosua R,  
585 Florez JC, Gabriel SB, Getz G, Glatt SJ, Hultman CM, Kathiresan S, Laakso M,  
586 McCarroll S, McCarthy MI, McGovern D, McPherson R, Neale BM, Palotie A,  
587 Purcell SM, Saleheen D, Scharf JM, Sklar P, Sullivan PF, Tuomilehto J, Tsuang MT,  
588 Watkins HC, Wilson JG, Daly MJ, MacArthur DG. Analysis of protein-coding  
589 genetic variation in 60,706 humans. *Nature* 2016;536(7616):285-91.
- 590 33. Zernant J, Collison FT, Lee W, Fishman GA, Noupou K, Yuan B, Cai C, Lupski JR,  
591 Yannuzzi LA, Tsang SH, Allikmets R. Genetic and clinical analysis of ABCA4-  
592 associated disease in African American patients. *Hum Mutat* 2014;35(10):1187-94.
- 593 34. Valverde D, Riveiro-Alvarez R, Bernal S, Jaakson K, Baiget M, Navarro R, Ayuso C.  
594 Microarray-based mutation analysis of the ABCA4 gene in Spanish patients with  
595 Stargardt disease: evidence of a prevalent mutated allele. *Mol Vis* 2006;12:902-8.
- 596 35. Lee W, Zernant J, Su PY, Nagasaki T, Tsang SH, Allikmets R. A genotype-phenotype  
597 correlation matrix for ABCA4 disease based on long-term prognostic outcomes. *JCI*  
598 *Insight* 2022;7(2)
- 599 36. Nishiguchi KM, Miya F, Mori Y, Fujita K, Akiyama M, Kamatani T, Koyanagi Y, Sato  
600 K, Takigawa T, Ueno S, Tsugita M, Kunikata H, Cisarova K, Nishino J, Murakami A,  
601 Abe T, Momozawa Y, Terasaki H, Wada Y, Sonoda KH, Rivolta C, Tsunoda T,  
602 Tsujikawa M, Ikeda Y, Nakazawa T. A hypomorphic variant in EYS detected by  
603 genome-wide association study contributes toward retinitis pigmentosa. *Commun*  
604 *Biol* 2021;4(1):140.
- 605 37. Bowne SJ, Sullivan LS, Blanton SH, Cepko CL, Blackshaw S, Birch DG, Hughbanks-  
606 Wheaton D, Heckenlively JR, Daiger SP. Mutations in the inosine monophosphate  
607 dehydrogenase 1 gene (IMPDH1) cause the RP10 form of autosomal dominant  
608 retinitis pigmentosa. *Hum Mol Genet* 2002;11(5):559-68.
- 609 38. Wang XT, Mion B, Aherne A, Engel PC. Molecular recruitment as a basis for negative  
610 dominant inheritance? propagation of misfolding in oligomers of IMPDH1, the  
611 mutated enzyme in the RP10 form of retinitis pigmentosa. *Biochim Biophys Acta*  
612 2011;1812(11):1472-6.
- 613 39. Ioannidis NM, Rothstein JH, Pejaver V, Middha S, McDonnell SK, Baheti S, Musolf A,  
614 Li Q, Holzinger E, Karyadi D, Cannon-Albright LA, Teerlink CC, Stanford JL, Isaacs

- 615 WB, Xu J, Cooney KA, Lange EM, Schleutker J, Carpten JD, Powell IJ, Cussenot O,  
616 Cancel-Tassin G, Giles GG, MacInnis RJ, Maier C, Hsieh CL, Wiklund F, Catalona  
617 WJ, Foulkes WD, Mandal D, Eeles RA, Kote-Jarai Z, Bustamante CD, Schaid DJ,  
618 Hastie T, Ostrander EA, Bailey-Wilson JE, Radivojac P, Thibodeau SN, Whittemore  
619 AS, Sieh W. REVEL: An Ensemble Method for Predicting the Pathogenicity of Rare  
620 Missense Variants. *Am J Hum Genet* 2016;99(4):877-85.
- 621 40. Jaganathan K, Kyriazopoulou Panagiotopoulou S, McRae JF, Darbandi SF, Knowles D,  
622 Li YI, Kosmicki JA, Arbelaez J, Cui W, Schwartz GB, Chow ED, Kanterakis E, Gao  
623 H, Kia A, Batzoglou S, Sanders SJ, Farh KK. Predicting Splicing from Primary  
624 Sequence with Deep Learning. *Cell* 2019;176(3):535-48.e24.
- 625 41. Hosono K, Nishina S, Yokoi T, Katagiri S, Saitsu H, Kurata K, Miyamichi D, Hikoya A,  
626 Mizobuchi K, Nakano T, Minoshima S, Fukami M, Kondo H, Sato M, Hayashi T,  
627 Azuma N, Hotta Y. Molecular Diagnosis of 34 Japanese Families with Leber  
628 Congenital Amaurosis Using Targeted Next Generation Sequencing. *Sci Rep*  
629 2018;8(1):8279.
- 630 42. Sano Y, Koyanagi Y, Wong JH, Murakami Y, Fujiwara K, Endo M, Aoi T, Hashimoto K,  
631 Nakazawa T, Wada Y, Ueno S, Gao D, Murakami A, Hotta Y, Ikeda Y, Nishiguchi  
632 KM, Momozawa Y, Sonoda KH, Akiyama M, Fujimoto A. Likely pathogenic  
633 structural variants in genetically unsolved patients with retinitis pigmentosa revealed  
634 by long-read sequencing. *J Med Genet* 2022;59(11):1133-38.
- 635 43. Khanna H, Davis EE, Murga-Zamalloa CA, Estrada-Cuzcano A, Lopez I, den Hollander  
636 AI, Zonneveld MN, Othman MI, Waseem N, Chakarova CF, Maubaret C, Diaz-Font  
637 A, MacDonald I, Muzny DM, Wheeler DA, Morgan M, Lewis LR, Logan CV, Tan  
638 PL, Beer MA, Inglehearn CF, Lewis RA, Jacobson SG, Bergmann C, Beales PL,  
639 Attié-Bitach T, Johnson CA, Otto EA, Bhattacharya SS, Hildebrandt F, Gibbs RA,  
640 Koenekoop RK, Swaroop A, Katsanis N. A common allele in RPGRIP1L is a  
641 modifier of retinal degeneration in ciliopathies. *Nat Genet* 2009;41(6):739-45.
- 642 44. Kajiwara K, Berson EL, Dryja TP. Digenic retinitis pigmentosa due to mutations at the  
643 unlinked peripherin/RDS and ROM1 loci. *Science* 1994;264(5165):1604-8.
- 644 45. Katsanis N, Ansley SJ, Badano JL, Eichers ER, Lewis RA, Hoskins BE, Scambler PJ,  
645 Davidson WS, Beales PL, Lupski JR. Triallelic inheritance in Bardet-Biedl syndrome,  
646 a Mendelian recessive disorder. *Science* 2001;293(5538):2256-9.

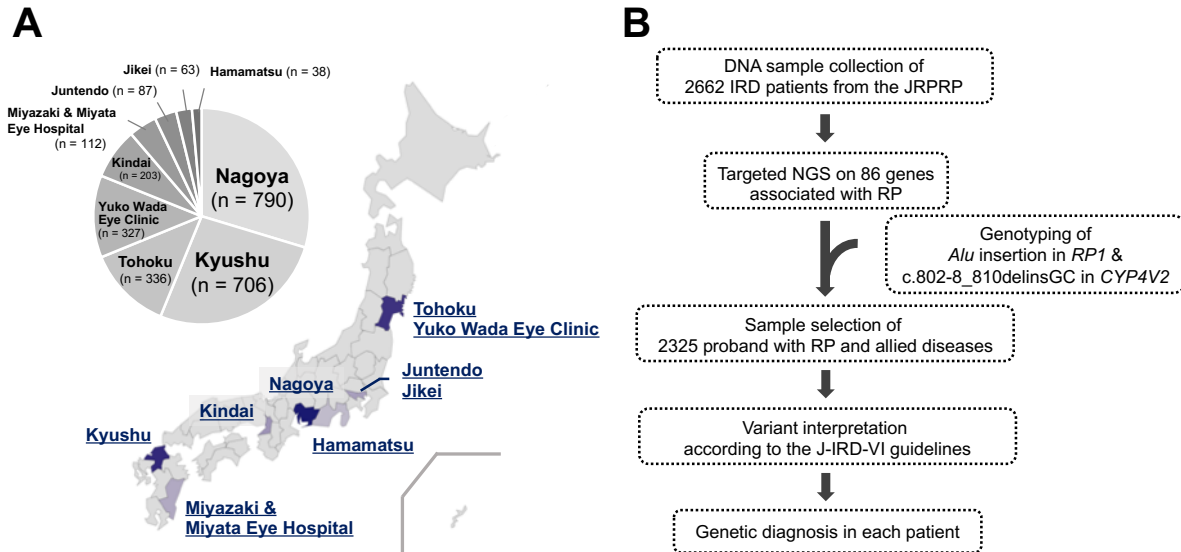
647 **Figure, Table**

**Table 1. Characteristics of 2325 Patients with RP and allied diseases**

Diagnosis	RP	Usher syndrome	LCA	CRD	Choroideremia	BCD
Patients, n	2155	32	15	78	11	34
Sex (Male/Female)	1020/1135	12/20	6/9	46/32	11/0	9/25
Age, years	54.2 (4-93)	45.5 (10-80)	25.3 (3-57)	55.4 (3-84)	48.5 (3-84)	55.8 (27-82)
Visual acuity (logMAR), n (%)						
≤ 0.5	1302 (60.4)	19 (59.4)	2 (13.3)	20 (25.6)	9 (81.8)	20 (58.8)
0.5 <, ≤ 1.3	381 (17.7)	2 (6.3)	4 (26.7)	38 (48.7)	1 (9.1)	7 (20.6)
> 1.3	391 (18.1)	9 (28.1)	8 (53.3)	18 (23.1)	1 (9.1)	6 (17.6)
Unknown	81 (3.8)	2 (6.3)	1 (6.7)	2 (2.6)	0 (0)	1 (2.9)
Inheritance form, n (%)						
AD	284 (13.2)	0 (0)	0 (0)	9 (11.5)	0 (0)	2 (5.9)
AR	410 (19.0)	12 (37.5)	6 (40)	8 (10.3)	0 (0)	12 (35.3)
X linked	34 (1.6)	0 (0)	0 (0)	0 (0)	6 (54.5)	0 (0)
Sporadic	1182 (54.8)	16 (50)	9 (60)	59 (75.6)	3 (27.3)	19 (55.9)
Unknown	245 (11.4)	4 (12.5)	0 (0)	2 (2.6)	2 (18.2)	1 (2.9)
Consanguinity of patients, n (%)	152 (7.1)	2 (6.3)	8 (53.3)	4 (5.1)	0 (0)	3 (8.8)

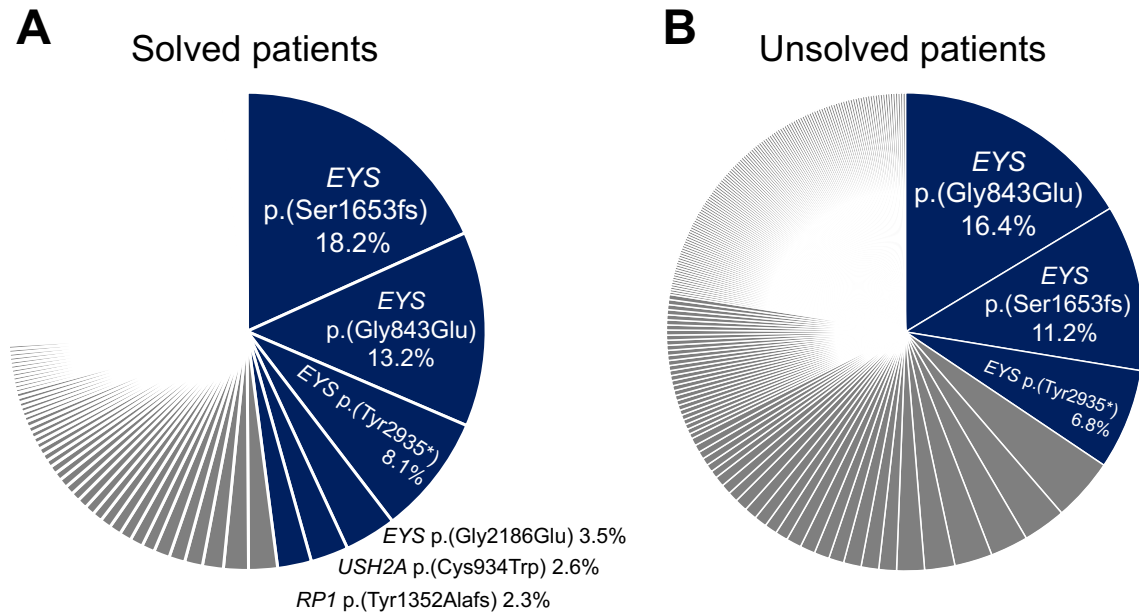
Visual acuity is derived from the right eye. The values of the decimal visual acuity were converted into the logarithm of the minimum angle of resolution (logMAR) units. The inheritance forms were determined based on clinical examination and interview. RP, retinitis pigmentosa; LCA, Leber congenital amaurosis; CRD, cone-rod dystrophy; BCD, Bietti crystalline dystrophy. AD, autosomal dominant; AR, autosomal recessive.



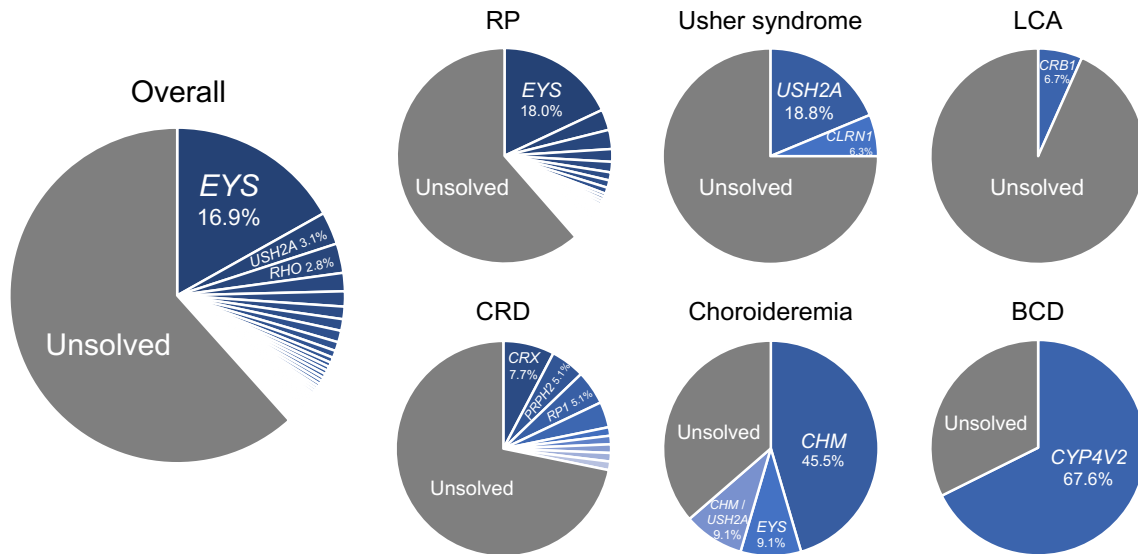


648 **Figure 1. Japanese facilities collecting IRD patients and workflow overview in this study.**

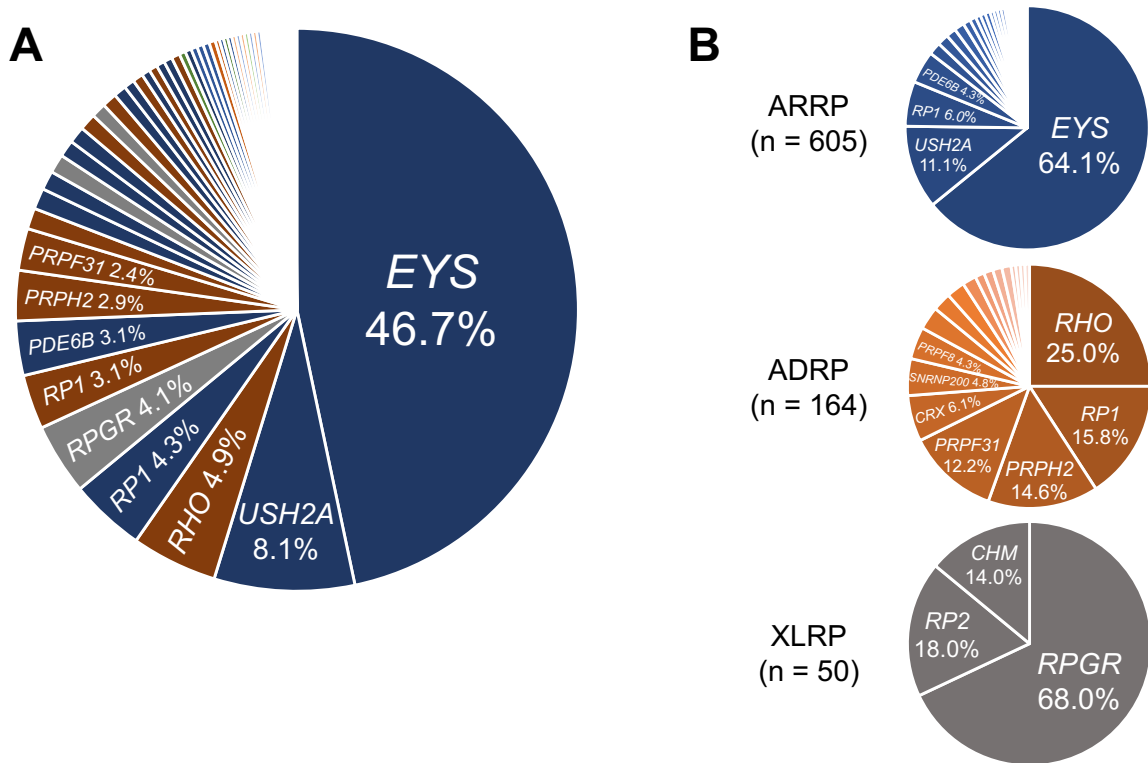
649 (A) The proportion of 2662 IRD patients from 9 facilities across Japan and their geographical  
650 distribution. (B) The workflow following DNA sample collection. Nagoya, Nagoya  
651 University Hospital; Kyushu, Kyushu University Hospital; Tohoku, Tohoku University  
652 Hospital; Kindai, Kindai University Hospital; Miyazaki, University of Miyazaki Hospital;  
653 Juntendo, Juntendo University Hospital; Jikei, the Jikei University Hospital; Hamamatsu,  
654 Hamamatsu University Hospital; IRD, inherited retinal dystrophy; JRPRP, Japan Retinitis  
655 Pigmentosa Registry Project; NGS, next-generation sequencing; RP, retinitis pigmentosa; J-  
656 IRD-VI, Japanese inherited retinal dystrophy variant interpretation.



657 **Figure 2. High frequency pathogenic variants in solved and unsolved patients with RP.**  
658 (A) The proportion of causative variants detected in solved patients with RP. A total of 1485  
659 alleles of causative variants were detected in solved patients with RP. High-frequency  
660 variants detected with more than 30 alleles are highlighted in the blue area. (B) The  
661 proportion of pathogenic or likely pathogenic variants carried in unsolved patients with RP.  
662 A total of 587 alleles of pathogenic or likely pathogenic variants were detected in unsolved  
663 patients with RP. High-frequency variants detected with more than 30 alleles are  
664 highlighted in the blue area. RP, retinitis pigmentosa.



665 **Figure 3. Percentage of solved patients and proportion of causative genes.**  
666 The pie chart displays the overall and disease-specific diagnostic rates along with the  
667 proportion of disease-causing genes. The blue area represents the proportion of genetically  
668 solved patients whereas the grey area represents that of unsolved patients. RP, retinitis  
669 pigmentosa; LCA, Leber congenital amaurosis; CRD, cone-rod dystrophy; BCD, Bietti  
670 crystalline dystrophy.



671 **Figure 4. Proportion of causative genes in solved patients with RP.**

672 (A) The proportion of causative genes in solved patients with RP. The blue area represents  
 673 the proportion of AR genes, the brown area represents AD genes, and the grey area  
 674 represents X-linked genes. The green area represents multiple causative genes. (B) The  
 675 proportion of causative genes based on the inheritance pattern. The pie chart excludes 12  
 676 patients in whom multiple causative genes with different inheritance patterns were detected.  
 677 AD, autosomal dominant; AR, autosomal recessive; n, number of patients; RP, retinitis  
 678 pigmentosa.