

# Comparison of frailty instruments in acute coronary syndrome patients

Anne Langsted 1, Jocelyn Benatar 2, Andrew Kerr 3, Katherine Bloomfield 4, Gerry Devlin 5, Alex Sasse 5, David Smythe, Andrew To, Gerry Wilkins<sup>8</sup>, Harvey White<sup>2</sup>, Ralph Stewart<sup>2</sup>.

1. Department of Clinical Biochemistry, Rigshospitalet, Denmark
2. Cardiology Department, Te Toki Tumai, Auckland, New Zealand.
3. Cardiology Department, Middelmore Hospital and Department of Epidemiology and Biostatistics, University of Auckland, Auckland, New Zealand.
4. Older Peoples Health, Waitemata, Auckland, New Zealand
5. Cardiology Department, Gisborne Hospital, New Zealand
6. Cardiology Department, Wellington Hospital, New Zealand
7. Cardiology Department, Christchurch Hospital, New Zealand
8. Cardiology Department, Dunedin Hospital, New Zealand

Correspondence:

Professor Ralph Stewart.

Cardiology Department, Te Toki Tumai, Auckland, New Zealand.

e-mail: [rstewart@adhb.govt.nz](mailto:rstewart@adhb.govt.nz)

Wordcount: Abstract: 241. Text: 2890. References: 37. Tables/Figures: 6.

## Abstract

### Background

Recognising frailty is important to guide clinical decisions in older patients with cardiac disease. The relative strengths of different frailty instruments to predict mortality and hospitalization risk are uncertain.

### Methods

The Edmonton Frail Scale (EFS), Fried Criteria (Fried), Clinical Frailty Scale (CFS), Katz score (Katz), GP Cognition test (GPCog), and Euroscore II a disease based risk score, were completed in 1174 clinically stable inpatients >70 years of age admitted with an acute coronary syndrome to 5 New Zealand hospitals. Associations with all cause mortality (n=353, 29%) during a median follow-up of 5.1 (IQR: 4.6-5.5) years and hospitalization for > 10 days in the next year (n=267, 22%) were evaluated.

### Results

There were graded associations between increasing frailty assessed by each tool and all cause mortality. For the EFS, which scores up to 17 points on different dimensions of frailty, hazard ratios for high (score 9-17, n=197) compared to low frailty (score 0-2, n=331) were 5.0 (95% CI: 3.4-7.4) for mortality, and 5.3 (3.4-8.3) for hospitalization. Discrimination for all-cause mortality according to Harrell's C-index for each instrument were EFS 0.663, Euroscore II 0.654, Fried 0.648, CFS 0.640, GPCog 0.608, and Katz 0.593,  $P < 0.001$  for all. C-statistics for hospitalization >10 days were EFS 0.649, Fried 0.628, Katz 0.602, Euroscore II 0.589, CFS 0.584, and GPCog 0.552,  $P < 0.001$  for all. When combining tools integrated discrimination improvement for both mortality and hospitalization were greater for EFS than for other frailty instruments.

### Conclusion

In acute coronary syndrome patients aged >70 years greater 'frailty' assessed using all tools was associated with higher mortality and hospitalization. The Edmonton Frail Scale, which provides a graded measure of severity of frailty based on information relevant to clinical care, discriminated the risk of mortality and hospitalization as well or better than other frailty instruments.

## Background

Frailty is characterized by multisystem impairment that decreases physiologic reserve and increases the vulnerability to stress(1). Frailty is known to be associated with lower quality of life, prolonged hospitalisations, and increased all cause mortality (2-4). The benefits of some cardiovascular interventions may be less in patients who are very frail (5). Clinical practice guidelines on management of acute coronary syndromes, heart valve disease, heart rhythm problems, and other cardiovascular diseases recommend frailty is considered when making treatment decisions for older patients(6-9). A formal evaluation of frailty may therefore be useful to identify patients at risk, and to help inform treatment decisions.

A number of different frailty assessment instruments are currently used. These include the Clinical Frail Scale (CFS) (10), the Fried criteria (Fried) (11), the Edmonton Frail Scale (EFS) (12) and Katz score (Katz) (13). Although cognitive impairment and dementia are distinct from frailty, tests for cognitive impairment such as the GP Cognition test (GPCog) (14) are also relevant to care of elderly patients with cardiovascular disease. The CFS is the simplest score – ranking overall frailty in 7 levels based on clinical judgement.

Differences between ‘frailty’ tools may be important to how frailty is interpreted clinically. Many studies have demonstrated associations between frailty assessed using different instruments and adverse clinical outcomes(2-4,15-17). However, few studies have directly compared how well different frailty instruments predict adverse clinical outcomes in patients with cardiovascular disease, or how they compare to standard disease based risk scores, such as Euroscore II (18).

The aim of this study was to compare how well several standard frailty instruments predict the risk of all cause mortality and prolonged hospitalisation during follow-up in older patients admitted to hospital with an acute coronary syndrome.

## Methods and materials

### Study Population

Patients aged more than 70 years admitted to a participating acute cardiac unit in New Zealand with an acute coronary syndrome were eligible for inclusion. Patients of Māori and Pacific descent could be included if >60 years, because age-related risk factors are present at a younger age in these peoples. 1231 patients were included from 5 New Zealand hospitals between August 4, 2015 and August 29, 2017. Frailty assessments were incomplete in 57 patients, so the study population is 1174 patients. This included 138 Maori or Pacific patients aged 60 to 70 years.

### Frailty assessments

Instruments assessed in this study were Clinical Frail Scale (CFS) (10), the Fried criteria (Fried) (11), the Edmonton Frail Scale (EFS) (12), the Katz score (Katz) (13), the GP Cognition test (GPCog) (14), and the Euroscore II (18). Types of questions included in each of the frailty instruments are summarized in Table 1.

After informed consent frailty assessments were undertaken >24 hours after admission when the patient was clinically stable. The CFS was completed by the clinical team caring for the patient. Random allocation was used to provide the clinical team with the results of the other frailty assessments either before or after completion of the CFS. Other frailty instruments were completed by a trained research nurse. All frailty assessments were then included in the medical record and were available to inform clinical care.

The CFS is based on data from the Canadian Study of Health and Aging and consists of 7 categories ranging from very fit to severely frail, with each category defined by a short description (10). The healthcare professional familiar with the patient scores the patient from an objective point of view. Because the CFS most closely reflects overall clinical judgment of frailty this scale was chosen to describe clinical risk factors and scores for other instruments by increasing frailty.

The Fried was derived with data from the Cardiovascular Health Study and defined by five criteria: unintentional weight loss in the past year, self-reported exhaustion, weakness measured by grip strength, slow walking speed, and low physical activity(11).

The EFS was developed for non-trained staff to assess frailty and includes 10 areas with a maximum score of 17 as the frailest individuals. The areas tested are mood, functional independence, social support, use of medication, nutrition, health perception, quality of life, continence, and two functional tests: the Clock test and the Timed get Up and Go test(12).

The Katz summarizes independent skills including bathing, dressing, going to the toilet, transferring, continence, and feeding. This measurement was developed as a predictor of need for nursing homes, alternative living, hospitalization, or home care(13).

The GPCog was designed to help GP's detect dementia and to be quick to administer. The test includes the Clock test, short-term memory tests, and questions on managing self(14).

The Euroscore II was developed as a tool to assess the 30-day mortality risk in patients undergoing cardiac surgery. It is a score based on the severity of the underlying cardiovascular disease, the type of the planned surgery, and other co-morbidities(18).

## **Linkage to registry and administrative data**

The All of New Zealand, Acute Coronary Syndrome – Quality Improvement (ANZACS-QI) registry was completed in all cardiac centers and catheterization laboratories in New Zealand since 2015(19). The ANZACS-QI is a web-based system which captures data for the management of patients admitted to hospital with an acute coronary syndrome designed to provide information on the quality of care. Demographic and clinical information including age, sex, ethnicity, time at the index hospital admission, acute coronary syndrome diagnosis, current smoking, history of diabetes, hypertension requiring pharmacotherapy, prior cardiovascular disease, history of heart failure, Grace risk score, and percutaneous coronary intervention or referral for coronary artery bypass surgery during the index admission are recorded in ANZACS-QI. Frailty assessments were recorded in a research module linked to the ANZACS-QI registry.

All individuals in New Zealand in contact with the health system are assigned a unique number, the National Health Index (NHI). This can be linked to electronic health databases including the National Minimum dataset that records all hospital admissions by International Classification of Diseases (ICD) 10 codes and the Mortality Collection that records all deaths in New Zealand. The pre-specified primary endpoints of the current study were all-cause mortality from the National Mortality dataset and hospitalization lasting > 10 days for any reason during the next year from the National Minimum dataset.

## **Statistical analysis**

Baseline clinical characteristics and summary statistics for the different frailty instruments are presented according to the 7 categories of increasing frailty on the CFS. Values were reported as means and medians with interquartile range. For other analyses responses on each of the instruments were grouped, when possible, in approximate quintiles of the study population, but also determined by the range of possible scores. The associations between the different frailty assessment tools and risk of death, and hospitalisation >10 days in the next year were analyzed using Cox proportional regression models, and reported by hazard ratios with 95% confidence intervals, adjusted by age and sex. Associations for CFS with mortality and hospitalisation were similar whether completed before or after access to other frailty scores, and were therefore reported together. Logistic regression was used because time to event was considered less relevant.

The performance of the different tools were evaluated by Harrell's C statistics and the integrative discriminative index (IDI). IDI is the improvement in the difference in average predicted risks between the individuals with and without the outcome in the updated model, thereby the average

improvement in sensitivity across all cutoffs (20). All statistical analyses were done by STATA version 15.1.

## Results

Baseline characteristics of the study population are displayed in Table 2 across 7 categories of the CFS. The percentage of women ranged from 22% in the severely frail group to 53% in the mildly frail group. The mean age was 76 years (interquartile range: 72-80), and was similar for men and women. In the total cohort 85 % were of New Zealand or other European descent, 6% New Zealand Maori, 6% Pacific Islanders, and 3% of Asian descent.

According to the CFS 10% of study participants were very fit, 16% well, 28% well with comorbidities, 24% vulnerable, 13% mildly frail, 8% moderately frail, and 1% severely frail (Figure 1). The percentage of patients with diabetes, lower hemoglobin and higher creatinine levels increased with higher CFS. Patients with a high CFS score were less likely to undergo coronary revascularization.

Summary measures for scores using the other instruments are displayed in table 3 by CFS score, and in figure 1. For the EFS 61% were classified as not frail, 17% vulnerable, 12% mildly frail, 7% moderately frail, and 3% severely frail. For the Katz 81% were independent in all 6 activities of daily living (ADL's) and 15% in 5 ADLs. 23% of patients were frail according to the Fried ( $\geq 3$  of 5 criteria present). The median score for the GPCog was 7 (interquartile range 5 to 8) and for the Euroscore II 2 (interquartile range 3 to 4).

### **Risk of mortality according to frailty scores**

During a median follow-up of 5.1 (IQR: 4.6-5.5) years there were 353 deaths from all causes (29%) There were graded increases in mortality risk with increasing 'frailty' assessed on all the instruments (Figure 2). For the EFS there was a stepwise increase in the hazard ratio (HR) for all-cause mortality with increasing frailty, which was 5.0 (95% CI: 3.4-7.4) for patients with higher scores from 9-17 (n=197) compared to low scores (score 0-2, n=331).

During 12 months after the index hospitalization 267 patients (22%) were hospitalized for > 10 days. HRs for hospitalization >10 days in the next year for each of the frailty tools are presented in Figure 3. There were graded increases in the HR for hospitalization > 10 days in the next year for each of the tools, which were strongest for the EFS and Fried.

The C-statistics for both mortality and hospitalization are compared for the different tools in Table 4. The discrimination of all-cause mortality according to Harrell's C-index was 0.663 (95%CI: 0.635-0.692) for the EFS, 0.648 (0.614-0.683) for the Fried, 0.641 (0.610-0.671) for the CFS, 0.608 (0.578-0.638) for the GPCog, and 0.593 (0.560-0.626) for Katz (Table 2). The C-statistics for hospitalization >10 days in the next year were higher for EFS 0.649 (0.611-0.687) and the Fried 0.628 (0.585-0.672) compared to other instruments. The EFS was the tool with the highest C-statistic for both mortality and hospitalisation.

The improvement in risk discrimination when adding additional information to another tool, measured using the integrated discrimination improvement (IDI), are compared in Table 4. Of the frailty tools the EFS added the most discrimination for both frailty and hospitalization. When the EFS was performed first, other frailty tools added less predictive information. The Euroscore II added more predictive information for mortality when added after all frailty tools. The EFS and Euroscore II added a similar amount of prognostic information both independently and when used together (Table 5).

## Discussion

### **Associations between frailty scores and mortality and hospitalisation**

Increasing frailty was associated with higher all cause mortality and prolonged hospitalisation for all the instruments assessed. This was most clear for the EFS, which also identified differences in mortality risk between patients who did not meet criteria for frailty according to the Fried or Katz scores. These observations indicate that in a population of ACS patients predominantly aged >70 years a simple categorisation of frailty as present or absent provides less prognostic and clinical information compared to assessment of frailty on a graded scale.

Three frailty instruments, the EFS, Fried, and CFS had similar C-statistics for mortality compared to the Euroscore II, and added incremental prognostic information when combined with the Euroscore II. The Euroscore II uses established disease based risk factors to estimate 30-day mortality risk following cardiac surgery, and also predicts longer term mortality (21). Because the frailty tools and the Euroscore II provide different information, the incremental prognostic value when Euroscore II was used with a frailty tool such as the EFS was greater than using 2 different frailty tools.

The CFS, which is based on clinician judgment was the simplest frailty assessment in this study. For mortality the predictive performance of the CFS was slightly less than the EFS, and similar to the Fried. This observation supports the ability of clinical judgment to estimate prognosis related to frailty as a simpler alternative to more structured frailty instruments. However, the CFS was less predictive of hospitalization than the EFS or Fried, and does not include a formal assessment of different dimensions of frailty such as low physical activity, weakness and weight loss, which may be useful to guide clinical care.

The Katz was less strongly predictive of mortality than other frailty instruments. In this study 81% of the participants had no, and 96%  $\leq$  one limitation of daily living assessed by Katz. The Katz is therefore not likely to be a useful as an initial frailty assessment tool for the majority of older acute coronary syndrome patients. The GPCog identified a broad range of scores, but was a weaker predictor of both mortality and hospitalization compared to the CFS, EFS, and Fried. The GPCog assesses cognitive function, which may not predict mortality as strongly as other dimensions of 'frailty' such as weight loss, weakness and low physical activity.

## Comparison with other studies

Previous studies have reported that frail patients with cardiovascular disease are more likely to suffer adverse outcomes (15). In a meta-analysis which evaluated associations between frailty and all-cause mortality after myocardial infarction (22), the combined hazard ratio for frail versus non-frail patients by the Fried was 2.8 (95%CI: 1.1-2.5)(23,24). The CFS has been associated with in-hospital mortality, short and long-term all-cause mortality, longer hospitalization, and risk of future hospitalization (25-30). The EFS has been associated with all-cause mortality in patients with an acute coronary syndrome (31-33). Frailty according to the Katz was associated with a higher risk of postoperative complications, in-hospital mortality, institutional discharge, and reduced survival in 3826 patients undergoing cardiac surgery (34). Reduced cognitive function identified using the GPCog has been associated with all-cause and cardiovascular mortality in mid- and late-life (35-38).

However, few previous studies have directly compared different frailty instruments in a large cohort of patients with cardiac disease. One study reported increased mortality and hospitalization for frail compared to non-frail patients assessed using the Fried, the EFS, and the CFS in 174 acute coronary syndrome patients, but with limited analysis of differences between instruments(16). Previous studies did not directly compare discrimination of different frailty instruments for adverse clinical outcomes in a large cohort of acute coronary syndrome patients.

## Clinical implications

The clinical value of different frailty assessment tools depends on the information obtained from individual questions, and the association between the overall 'frailty score' and adverse clinical events. The CFS provides less information on reasons for frailty because it uses a simple scale with scoring based on clinical judgment alone. Other frailty instruments score responses to specific questions –but there are large differences between frailty tools (Table 1). The Fried assesses the frailty phenotype which includes wasting, weakness, and low physical activity. The GPCog is a formal assessment of cognitive function, which in itself is important for clinical decisions, but does not assess frailty. Strengths of the EFS are that it evaluates several dimensions of ageing including physical and cognitive function, weight loss, and activities of daily living, each of which may be relevant to clinical care.

A frailty assessment may provide information relevant to clinical decisions in patients with a broad range of cardiovascular diseases. For some clinical decisions, including an invasive strategy in acute coronary syndrome patients, aortic valve replacement, implanted defibrillators, cardio-thoracic surgery, and costly medical treatments, a frailty assessment may better inform the balance of benefits and risks of the proposed intervention (5,15,34). In the current study frail patients were less likely to be referred for PCI or CABG. Evaluating frailty on a graded scale is an advantage if the clinically relevant level of frailty which influences decisions varies by treatment or indication. A frailty assessment can also guide other aspects of clinical care, such as targeting assistance for specific difficulties with daily living, encouraging exercise in patients with weakness and low



functional capacity, and modifying treatment plans for patients with cognitive impairment. Measuring frailty on a continuum between good health and advanced frailty is also relevant to prevention, which includes maintaining or increasing physical activity, healthy eating and good medical care.

## **Study limitations**

Frailty assessments were undertaken by experienced cardiac nurses at each participating hospital after brief training. The use of these instruments was therefore similar to usual clinical care. Variation in evaluations between assessors was not determined. Within the same study population the discriminatory value of different frailty instruments can be directly compared. However it is possible results vary for different countries and ethnicities, and for patients with different medical problems. Strengths of the study include the large number of patients with standard information collected for the different frailty assessment tools, and complete follow-up for outcomes from comprehensive national administrative data.

## **Conclusion**

In acute coronary syndrome patients mostly aged >70 years increasing frailty scores was associated with all cause mortality for all the tools evaluated. The Edmonton Frailty Scale provides a graded assessment of the level of frailty, information on factors contributing to frailty, and predicted all-cause mortality and hospitalization as well as or better than other frailty instruments.

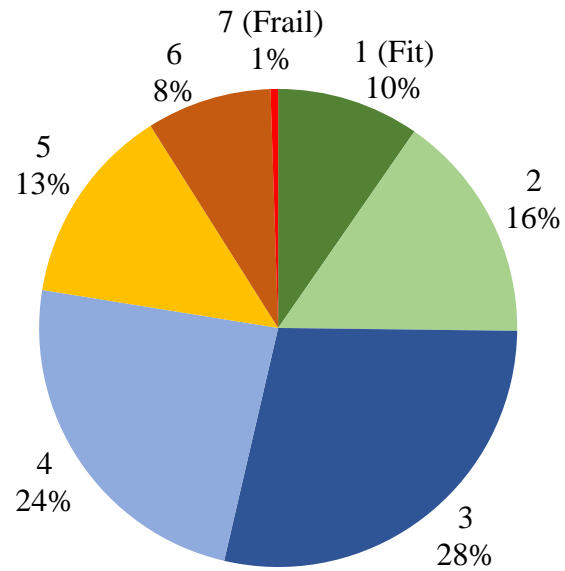
## References

1. Stewart R. Cardiovascular Disease and Frailty: What Are the Mechanistic Links? *Clinical chemistry* 2019;65:80-86.
2. Clegg A, Young J, Iliffe S, Rikkert MO, Rockwood K. Frailty in elderly people. *Lancet* 2013;381:752-62.
3. Hoogendijk EO, Suanet B, Dent E, Deeg DJ, Aartsen MJ. Adverse effects of frailty on social functioning in older adults: Results from the Longitudinal Aging Study Amsterdam. *Maturitas* 2016;83:45-50.
4. Hoogendijk EO, Afilalo J, Ensrud KE, Kowal P, Onder G, Fried LP. Frailty: implications for clinical practice and public health. *Lancet* 2019;394:1365-1375.
5. Sanchis J, Bueno H, Minana G et al. Effect of Routine Invasive vs Conservative Strategy in Older Adults With Frailty and Non-ST-Segment Elevation Acute Myocardial Infarction: A Randomized Clinical Trial. *JAMA Intern Med* 2023;183:407-415.
6. Collet JP, Thiele H, Barbato E et al. 2020 ESC Guidelines for the management of acute coronary syndromes in patients presenting without persistent ST-segment elevation. *European heart journal* 2021;42:1289-1367.
7. Hindricks G, Potpara T, Dagres N et al. 2020 ESC Guidelines for the diagnosis and management of atrial fibrillation developed in collaboration with the European Association for Cardio-Thoracic Surgery (EACTS): The Task Force for the diagnosis and management of atrial fibrillation of the European Society of Cardiology (ESC) Developed with the special contribution of the European Heart Rhythm Association (EHRA) of the ESC. *European heart journal* 2021;42:373-498.
8. Lawton JS, Tamis-Holland JE, Bangalore S et al. 2021 ACC/AHA/SCAI Guideline for Coronary Artery Revascularization: Executive Summary: A Report of the American College of Cardiology/American Heart Association Joint Committee on Clinical Practice Guidelines. *Circulation* 2022;145:e4-e17.
9. Writing Committee M, Otto CM, Nishimura RA et al. 2020 ACC/AHA Guideline for the Management of Patients With Valvular Heart Disease: Executive Summary: A Report of the American College of Cardiology/American Heart Association Joint Committee on Clinical Practice Guidelines. *J Am Coll Cardiol* 2021;77:450-500.
10. Rockwood K, Song X, MacKnight C et al. A global clinical measure of fitness and frailty in elderly people. *CMAJ* 2005;173:489-95.
11. Fried LP, Tangen CM, Walston J et al. Frailty in older adults: evidence for a phenotype. *J Gerontol A Biol Sci Med Sci* 2001;56:M146-56.
12. Rolfson DB, Majumdar SR, Tsuyuki RT, Tahir A, Rockwood K. Validity and reliability of the Edmonton Frail Scale. *Age Ageing* 2006;35:526-9.
13. Katz S, Ford AB, Moskowitz RW, Jackson BA, Jaffe MW. Studies of Illness in the Aged. The Index of Adl: A Standardized Measure of Biological and Psychosocial Function. *JAMA* 1963;185:914-9.

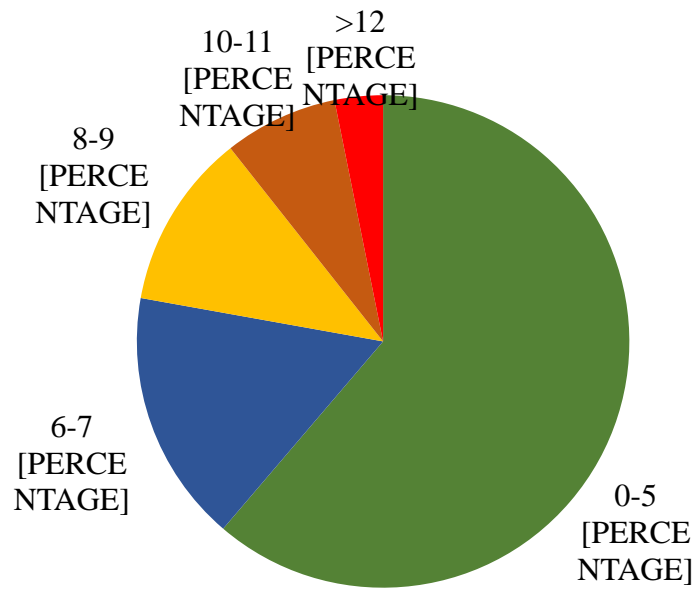
14. Brodaty H, Pond D, Kemp NM et al. The GPCOG: a new screening test for dementia designed for general practice. *J Am Geriatr Soc* 2002;50:530-4.
15. Singh M, Rihal CS, Lennon RJ, Spertus JA, Nair KS, Roger VL. Influence of frailty and health status on outcomes in patients with coronary disease undergoing percutaneous revascularization. *Circ Cardiovasc Qual Outcomes* 2011;4:496-502.
16. Nowak W, Kowalik I, Kuzin M et al. Comparison of the prognostic value of frailty assessment tools in patients aged  $\geq 65$  years hospitalized in a cardiac care unit with acute coronary syndrome. *J Geriatr Cardiol* 2022;19:343-353.
17. Singh M, Stewart R, White H. Importance of frailty in patients with cardiovascular disease. *European heart journal* 2014;35:1726-31.
18. Nashef SA, Roques F, Sharples LD et al. EuroSCORE II. *Eur J Cardiothorac Surg* 2012;41:734-44; discussion 744-5.
19. Kerr A, Williams MJ, White H et al. The All New Zealand Acute Coronary Syndrome Quality Improvement Programme: Implementation, Methodology and Cohorts (ANZACS-QI 9). *N Z Med J* 2016;129:23-36.
20. Pencina MJ, D'Agostino RB, Sr., D'Agostino RB, Jr., Vasan RS. Evaluating the added predictive ability of a new marker: from area under the ROC curve to reclassification and beyond. *Stat Med* 2008;27:157-72; discussion 207-12.
21. Barili F, Pacini D, D'Ovidio M et al. The Impact of EuroSCORE II Risk Factors on Prediction of Long-Term Mortality. *Ann Thorac Surg* 2016;102:1296-303.
22. Tse G, Gong M, Nunez J et al. Frailty and Mortality Outcomes After Percutaneous Coronary Intervention: A Systematic Review and Meta-Analysis. *J Am Med Dir Assoc* 2017;18:1097 e1-1097 e10.
23. Hamonangan R, Wijaya IP, Setiati S, Harimurti K. Impact of Frailty on the First 30 Days of Major Cardiac Events in Elderly Patients with Coronary Artery Disease Undergoing Elective Percutaneous Coronary Intervention. *Acta Med Indones* 2016;48:91-8.
24. Sanchis J, Ruiz V, Bonanad C et al. Prognostic Value of Geriatric Conditions Beyond Age After Acute Coronary Syndrome. *Mayo Clin Proc* 2017;92:934-939.
25. Ekerstad N, Swahn E, Janzon M et al. Frailty is independently associated with 1-year mortality for elderly patients with non-ST-segment elevation myocardial infarction. *Eur J Prev Cardiol* 2014;21:1216-24.
26. Ekerstad N, Swahn E, Janzon M et al. Frailty is independently associated with short-term outcomes for elderly patients with non-ST-segment elevation myocardial infarction. *Circulation* 2011;124:2397-404.
27. Kang L, Zhang SY, Zhu WL et al. Is frailty associated with short-term outcomes for elderly patients with acute coronary syndrome? *J Geriatr Cardiol* 2015;12:662-7.
28. Murali-Krishnan R, Iqbal J, Rowe R et al. Impact of frailty on outcomes after percutaneous coronary intervention: a prospective cohort study. *Open Heart* 2015;2:e000294.
29. Sujino Y, Tanno J, Nakano S et al. Impact of hypoalbuminemia, frailty, and body mass index on early prognosis in older patients ( $\geq 85$  years) with ST-elevation myocardial infarction. *J Cardiol* 2015;66:263-8.

30. Yoshioka N, Takagi K, Morita Y et al. Impact of the clinical frailty scale on mid-term mortality in patients with ST-elevated myocardial infarction. *Int J Cardiol Heart Vasc* 2019;22:192-198.
31. Blanco S, Ferrieres J, Bongard V et al. Prognosis Impact of Frailty Assessed by the Edmonton Frail Scale in the Setting of Acute Coronary Syndrome in the Elderly. *Can J Cardiol* 2017;33:933-939.
32. Graham MM, Galbraith PD, O'Neill D, Rolfson DB, Dando C, Norris CM. Frailty and outcome in elderly patients with acute coronary syndrome. *Can J Cardiol* 2013;29:1610-5.
33. White HD, Westerhout CM, Alexander KP et al. Frailty is associated with worse outcomes in non-ST-segment elevation acute coronary syndromes: Insights from the TaRgeted platelet Inhibition to cLarify the Optimal strateGy to medicallY manage Acute Coronary Syndromes (TRILOGY ACS) trial. *Eur Heart J Acute Cardiovasc Care* 2016;5:231-42.
34. Lee DH, Buth KJ, Martin BJ, Yip AM, Hirsch GM. Frail patients are at increased risk for mortality and prolonged institutional care after cardiac surgery. *Circulation* 2010;121:973-8.
35. Dewey ME, Saz P. Dementia, cognitive impairment and mortality in persons aged 65 and over living in the community: a systematic review of the literature. *Int J Geriatr Psychiatry* 2001;16:751-61.
36. Downer B, Milani S, Wong R. The Sequence of Physical and Cognitive Impairment and the Association with Mortality Among Unimpaired Older Mexican Adults. *J Gerontol A Biol Sci Med Sci* 2020;75:1386-1392.
37. Zhu Z, Liao H. Impact of cognitive impairment and systemic vascular comorbidities on risk of all-cause and cardiovascular mortality: National Health and Nutrition Examination Survey 1999 to 2002. *Int J Cardiol* 2020;300:255-261.
38. Gleib DA, Mendes de Leon CF, Lee C, Weinstein M. Cognition and Mortality Risk Among Midlife and Older Americans. *J Gerontol A Biol Sci Med Sci* 2023.

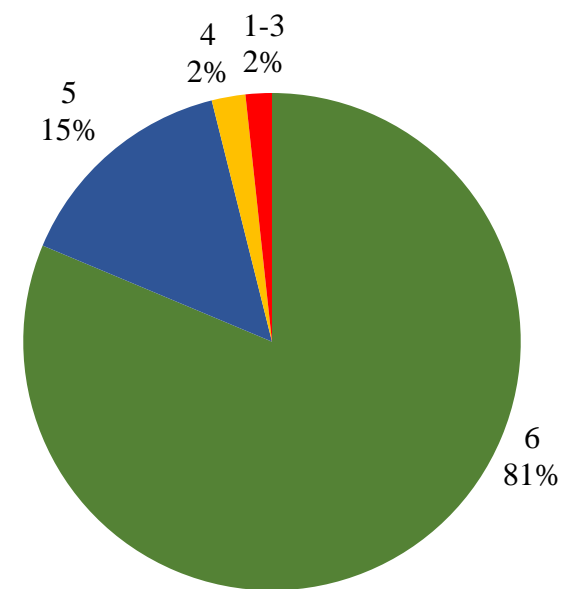
### Clinical Frail Score



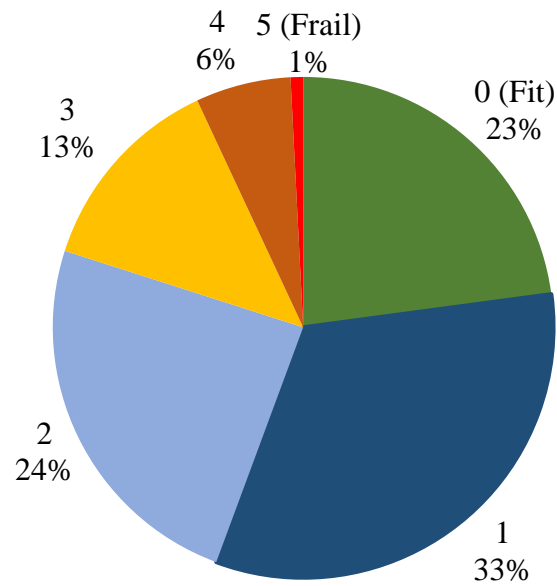
### Edmonton Frail Scale



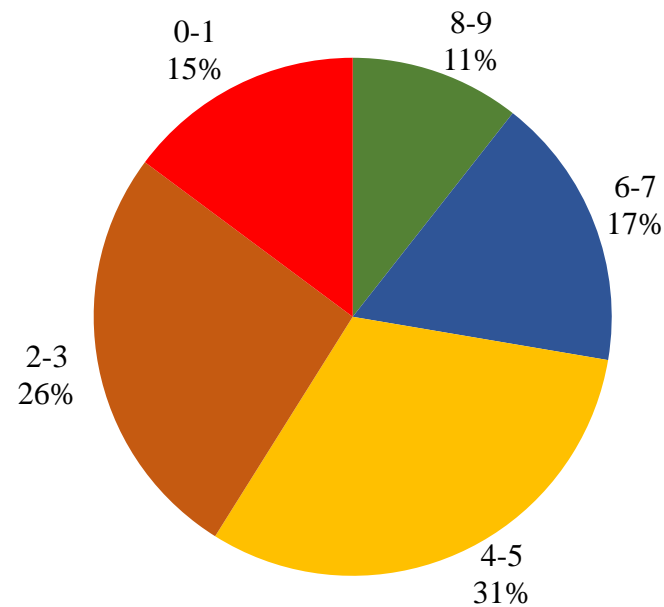
### Katz Activities of Daily Living



### Fried Criteria



### GP Cognition



### EuroSCORE II

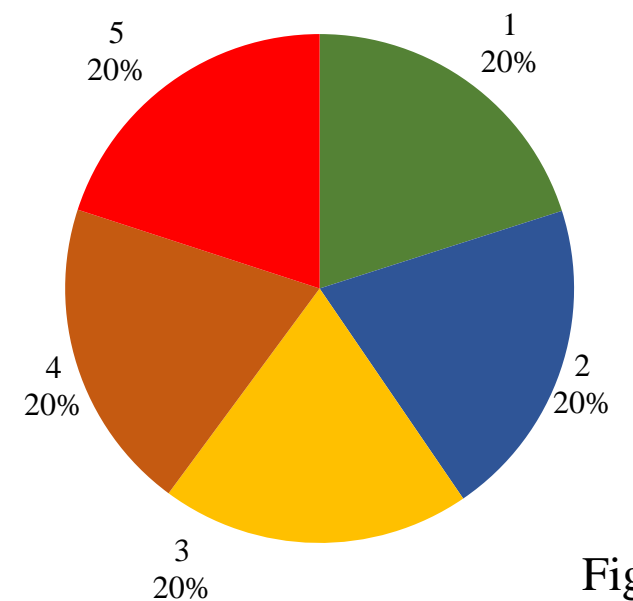
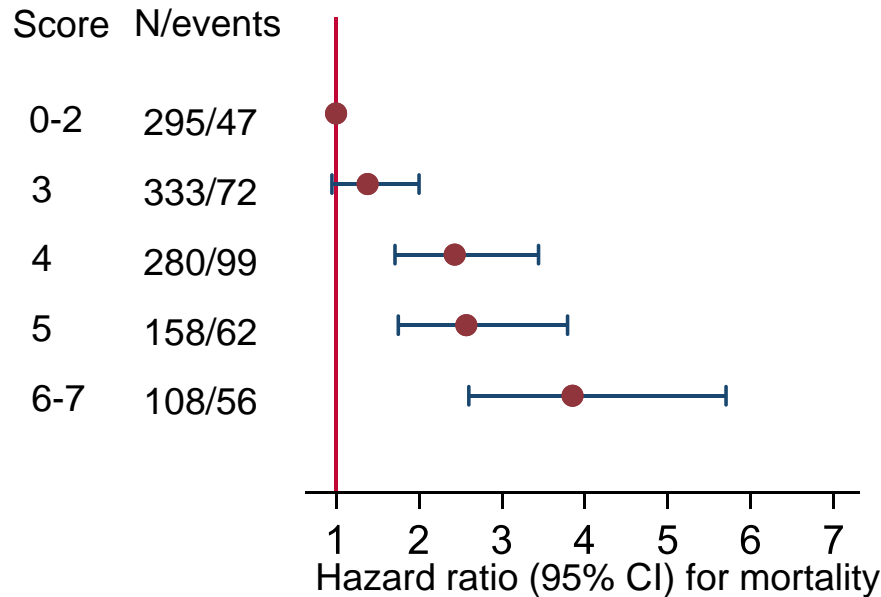
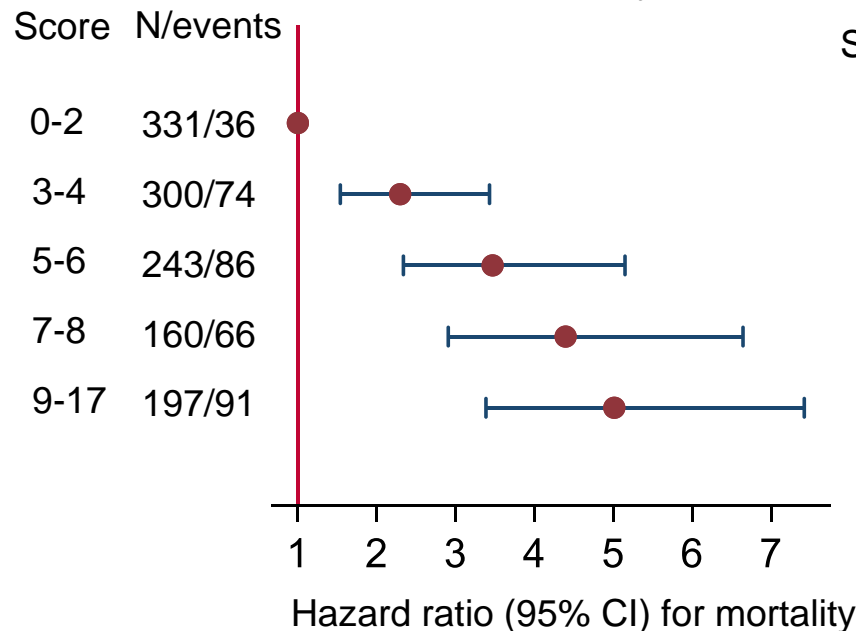


Figure 1

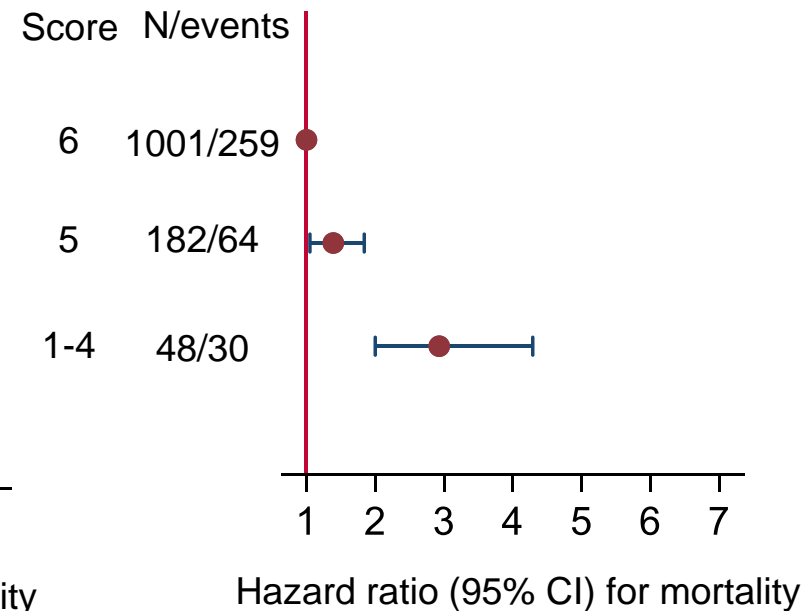
### Clinical Frail Scale



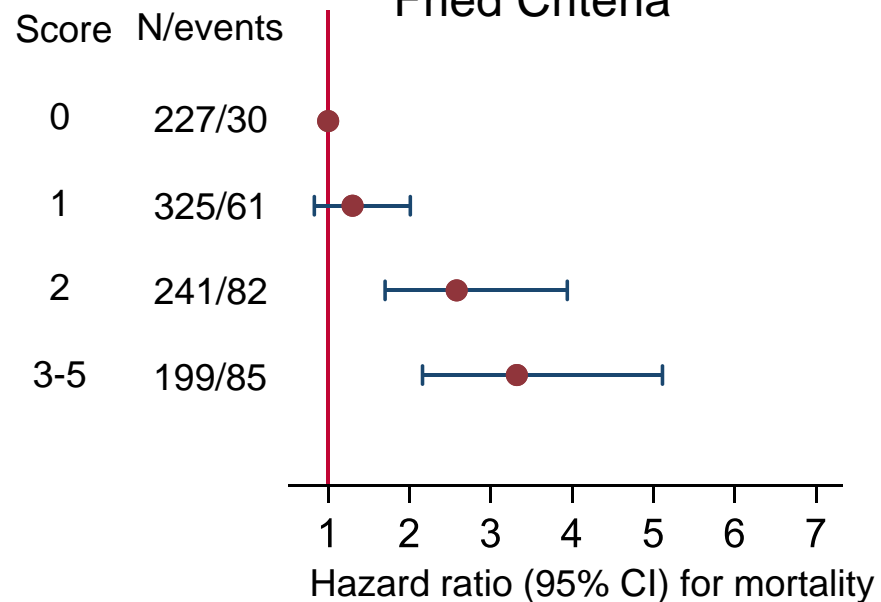
### Edmonton Frailty Scale



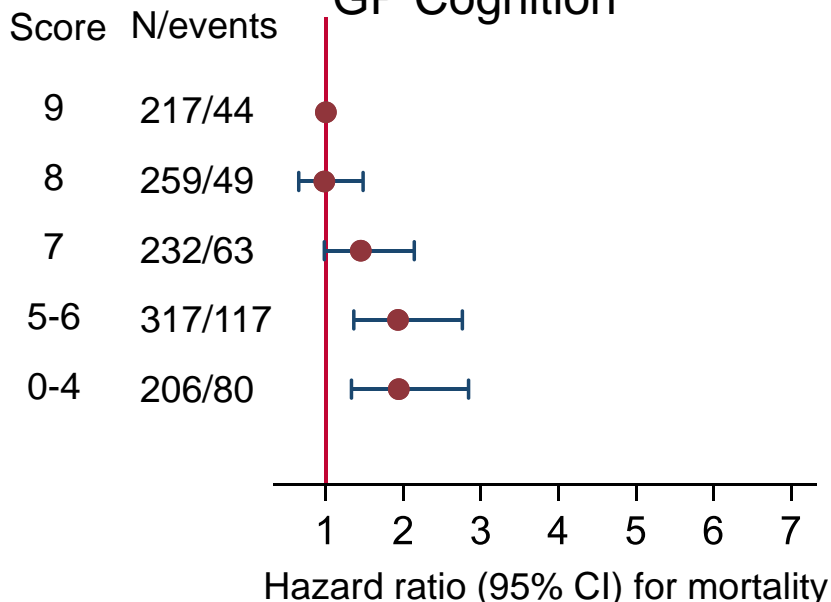
### Katz ADL



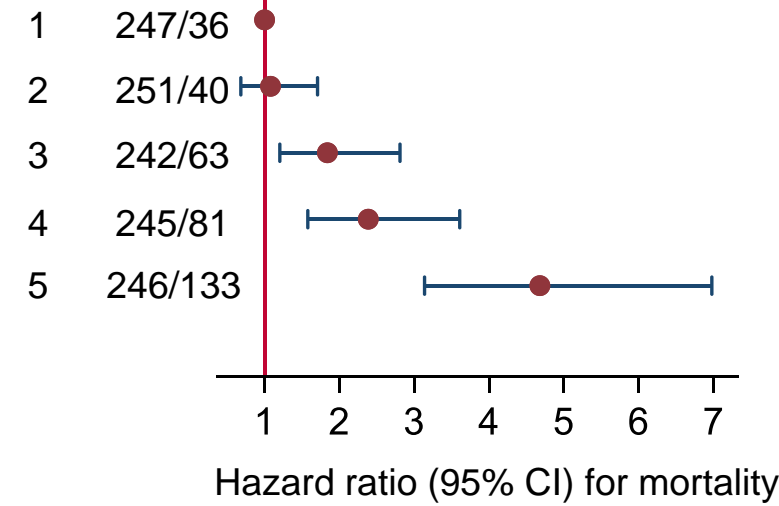
### Fried Criteria



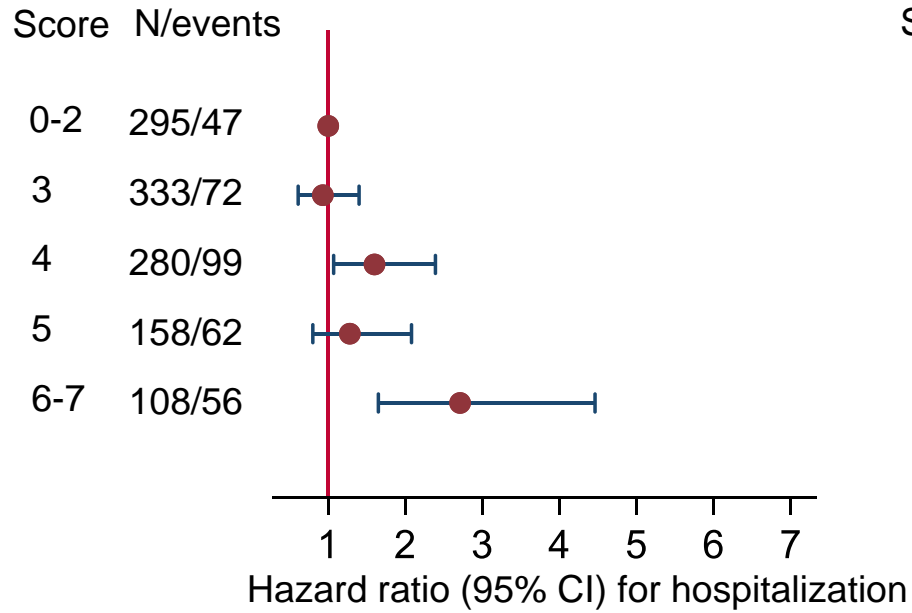
### GP Cognition



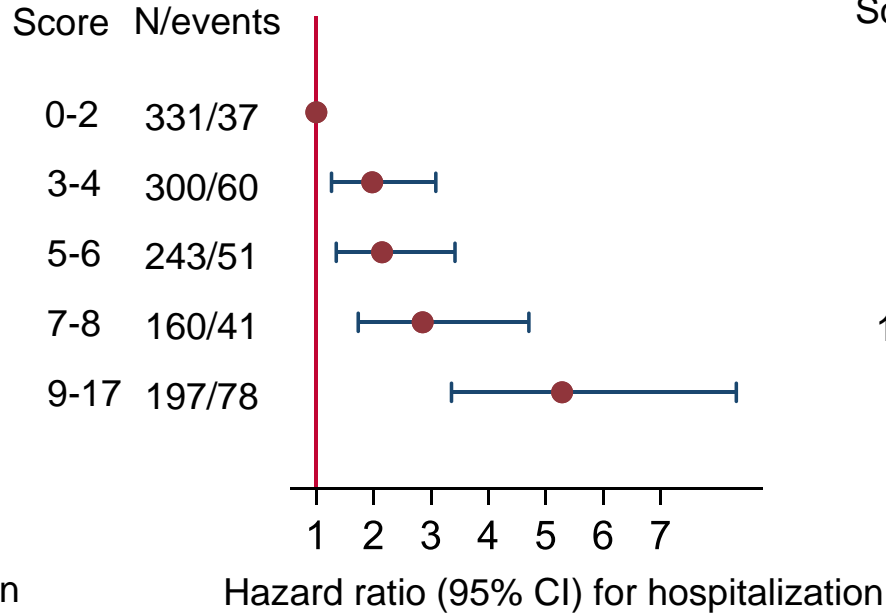
### EuroSCORE II



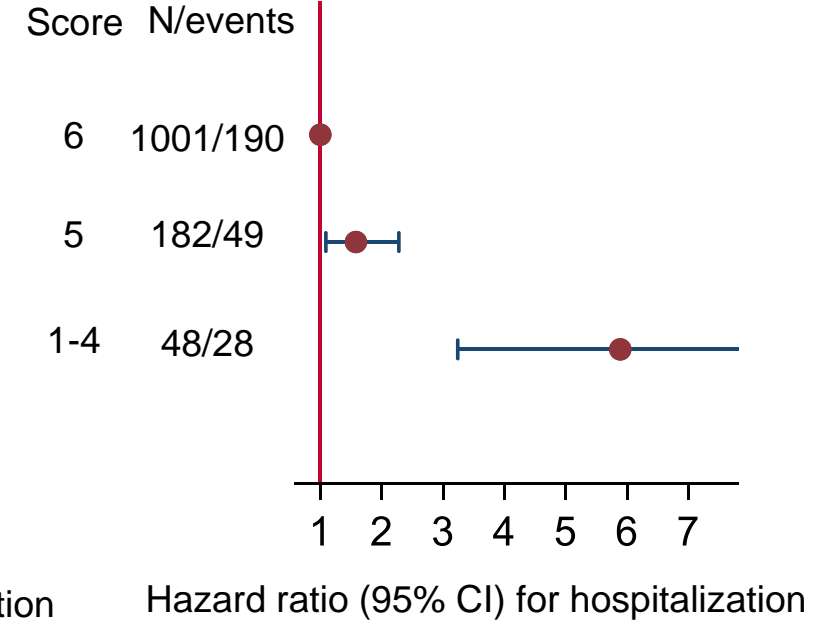
### Clinical Frail Scale



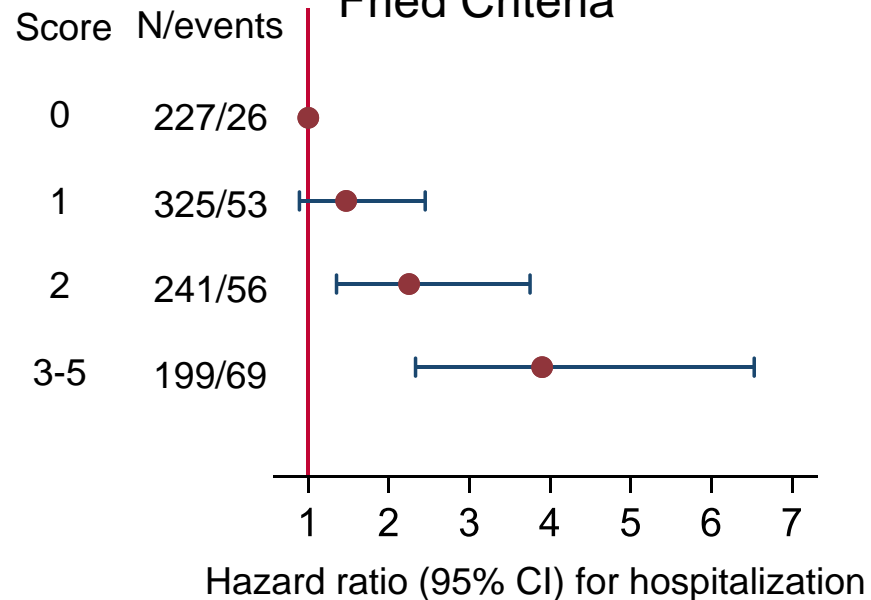
### Edmonton Frailty Scale



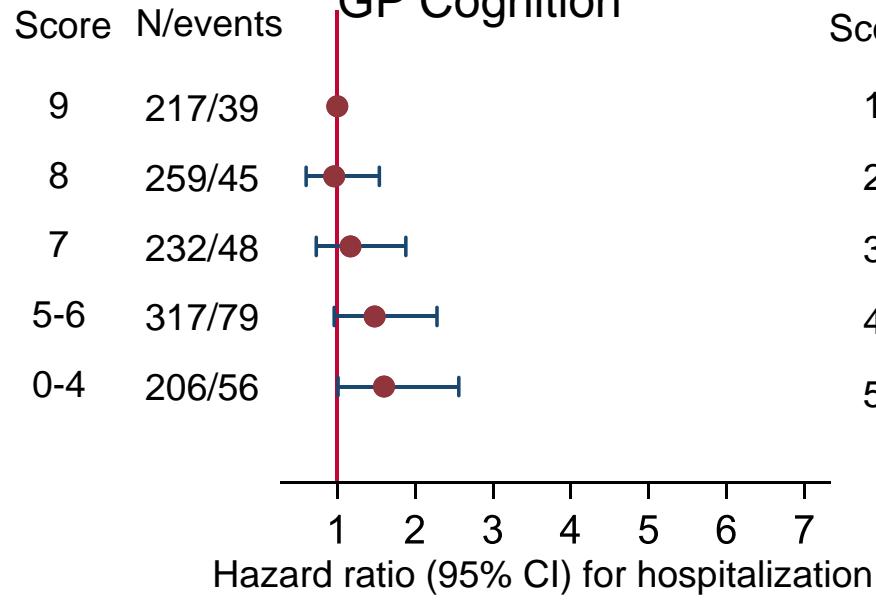
### Katz ADL



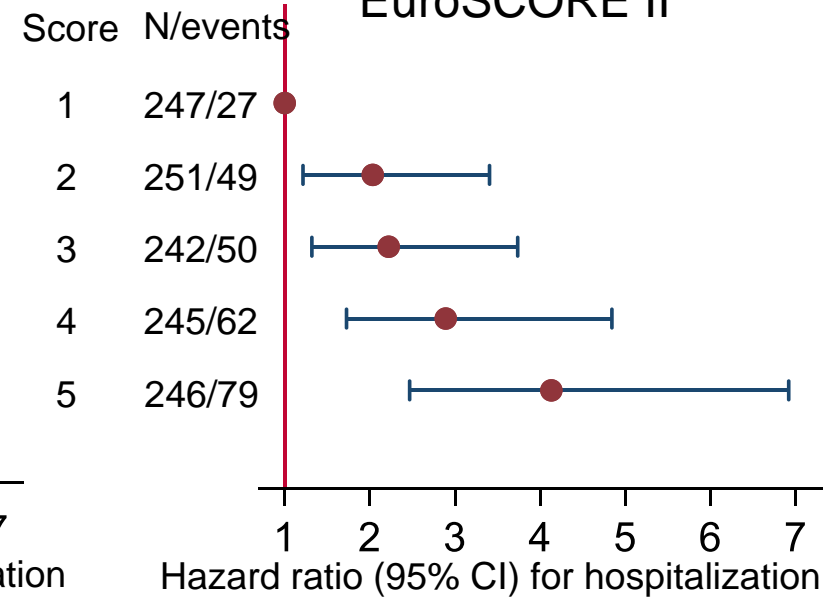
### Fried Criteria



### GP Cognition



### EuroSCORE II



**Table 1: Comparison of instruments evaluated in this study.**

	<b>Clinical frail scale</b>	<b>Edmonton Frail Scale (EFS)</b>	<b>Freid</b>	<b>Katz</b>	<b>GP Cognition test (GpGog)</b>	<b>Euroscore II</b>
<b>Questions / points allocated in instrument</b>						
Total number	1	17	5	6	6	18
Age/sex						2
Disease markers		3				14 +(2)
Functional independence / activities of daily living		5		6		
Cognitive function		2			6	
Social support / mood		2				
Weight loss		1	1			
Physical function / vitality		4	4			(2)

The CFS uses 7 categories to grade frailty based on clinician judgement and broad descriptors. The contribution of specific factors to the frailty assessment is not documented (2).

The Euroscore II includes 2 questions which relate to both disease and physical function: New York Heart Association (NYHA symptom class) and reduced mobility due to severe neurological or rheumatological disease.



**Table 2.** Clinical characteristics of study population assessed during index hospitalization.

	All	Clinical Frail Scale						
		Very fit	Well	Well comorbid	Vulnerable	Mildly frail	Moderately frail	Severely frail
<b>Number (%)</b>	1174 (100)	113 (10)	182 (16)	333 (28)	280 (24)	158 (13)	99 (8)	9 (1)
Women, %	37	23	39	34	34	53	47	22
Age	76(72-80)	76(73-80)	75(71-79)	76(72-79)	76(73-80)	78(73-83)	77(74-83)	75(74-83)
Women's age	77(73-85)	77(73-85)	76(72-83)	76(72-79)	75(72-80)	79(74-83)	78(75-84)	85(75-94)
<b>Ethnicity, N(%)</b>								
NZ European	810(70)	80(72)	120(66)	239(72)	187(67)	110(71)	68(72)	6(67)
Other European	174(15)	23(21)	31(17)	38(12)	49(18)	20(13)	11(12)	2(22)
NZ Maori	73(6)	6(5)	7(4)	27(8)	15(5)	10(6)	7(7)	1(11)
Pacific Islands	65(6)	0(0)	14(8)	14(4)	23(8)	10(6)	4(4)	0(0)
Asian	38(3)	2(2)	9(5)	12(4)	5(2)	6(4)	4(4)	0(0)
<b>CVD + risk factors</b>								
Current smoker	74(7.3)	2(2.1)	7(4.3)	28(9.8)	23(9.5)	8(6.1)	6(7.2)	0(0)
Diabetes	292(29)	20(21)	27(17)	80(28)	84(35)	42(32)	35(42)	4(50)
BMI >=30	254(31)	13(17)	42(33)	77(32)	73(38)	25(24)	22(34)	2(29)
BMI <=20	25(3.1)	2(2.6)	4(3.2)	2(0.8)	5(2.6)	7(6.7)	5(7.7)	0(0)
Prior CVD	452(39)	36(32)	56(31)	133(40)	129(46)	56(35)	38(38)	4(44)
Prior MI	285(24)	24(21)	30(16)	79(24)	86(31)	35(22)	29(29)	2(22)
Heart failure	62(5)	2(1.8)	3(1.7)	18(5.4)	24(8.6)	7(4.4)	8(8.1)	0(0)
COPD	121(10)	4(3.5)	12(6.6)	30(9.0)	31(11)	22(14)	19(19)	3(33)
Hemoglobin	135(124-147)	142(131-153)	138(128-149)	136(126-149)	135(124-144)	130(120-139)	126(113-138)	125(107-138)
Creatinine	94(80-132)	94(79-105)	90(77-104)	93(80-111)	97(81-118)	97(78-129)	103(84-128)	108(93-132)



Grace score	3(1-6)	3(1-4.5)	2(1-4)	3(1-5)	3(1-7)	3(1.5-6)	4(2-7)	17(3-24)
<b>Diagnosis</b>								
STEMI	233(23)	24(25)	35(22)	66(23)	55(23)	29(22)	20(24)	4(50)
Non-STEMI/UA	716(71)	68(71)	111(68)	214(75)	169(70)	91(69)	59(71)	4(50)
Not- ACS	61(6)	4(4)	17(10)	7(2)	17(7)	12(9)	4(5)	0(0)
<b>Coronary revascularisation</b>								
PCI	467(40)	50(44)	68(37)	142(43)	111(40)	55(35)	39(39)	2(22)
CABG	185(20)	25(27)	44(30)	56(20)	38(17)	14(12)	8(10)	0(0)

Numbers are median (interquartile range) or number (percent). N=number. NZ=New Zealand.

BMI = Body mass index in kg/m<sup>2</sup>, CVD = cardiovascular disease, COPD = chronic obstructive pulmonary disease, MI = myocardial infarction, ACS = Acute coronary syndrome, STEMI = ST elevation myocardial infarction, UA = unstable angina

Table 3. Scores for different frailty instruments and the EuroSCORE II by frailty based on the Clinical Frail Scale in patients admitted with a confirmed or suspected acute coronary syndrome.

		Clinical Frail Scale							
		All	Very fit	Well	Well comorbid	Vulnerable	Mildly frail	Moderately frail	Severely frail
Number (%)		1174 (100)	113 (10)	182 (16)	333 (28)	280 (24)	158 (13)	99 (8)	9 (1)
Frailty assessment									
EFS	Median (IQR)	4(2-7)	2(1-4)	3(2-5)	4(2-6)	5(3-7)	7(4-9)	9(6-11)	12(10-13)
	mean	5.0	2.7	3.7	3.9	5.5	6.8	8.3	10.9
Katz ADL	Median (IQR)	6(6-6)	6(6-6)	6(6-6)	6(6-6)	6(6-6)	6(5-6)	6(5-6)	4(3-6)
	mean	5.8	5.9	5.9	5.9	5.8	5.6	5.3	4.2
Fried	Median (IQR)	1(1-2)	1(0-2)	1(0-2)	1(0-2)	2(1-2)	3(1-3)	3(2-4)	4(4-5)
	mean	1.5	1.0	1.0	1.1	1.7	2.4	2.6	4.5
GP Cognition	Median (IQR)	7(5-8)	8(6-8)	7(5-8)	7(6-8)	7(5-8)	6(5-8)	6(4-8)	5(1-7)
	mean	6.5	7.3	6.7	6.8	6.4	6.0	5.5	4.3
EuroSCORE II	Median (IQR)	2(2-4)	2(1-3)	2(1-3)	2(1-4)	3(2-5)	3(2-6)	4(2-6)	10(4-13)
	mean	3.6	2.3	2.8	3.0	3.8	5.0	5.2	10.5

Numbers are mean (interquartile range) or number (percent). N=number. EFS=Edmonton Frail Scale. ADL=Activities of Daily Living. GP=General Practitioner. EuroSCORE= The European System for Cardiac Operative Risk Evaluation.

Table 4. Frailty assessment score's discrimination for mortality and hospitalization in patients with acute coronary syndrome.

Frailty assessment	Mortality		Hospitalization	
	C-statistic	95% CI	C-statistic	95%CI
Clinical Frail Scale	0.641	0.610-0.671	0.584	0.544-0.623
Edmonton Frailty Scale	0.663	0.635-0.692	0.649	0.611-0.687
Fried Criteria	0.648	0.614-0.683	0.628	0.585-0.672
General Practitioner Cognition Test	0.608	0.578-0.638	0.552	0.513-0.590
Katz Independence in ADL	0.593	0.560-0.626	0.602	0.560-0.644
EuroSCORE II	0.654	0.622-0.686	0.589	0.550-0.629

Analyses were adjusted by age and sex. CI=confidence interval. ADL=activities of daily living. EuroSCORE= The European System for Cardiac Operative Risk Evaluation.

**Table 5.** Integrated Discrimination Improvement (IDI) for A) all-cause mortality and B) hospitalization by adding information from different frailty scales to initial assessment tool

A.

Initial assessment						
	+Clinical FS	+Edmonton FS	+Fried Criteria	+Katz ADL	+GP Cog	+EuroSCORE II
Clinical Frail Scale	-	0.0387 (p<0.0001)	0.0291 (p<0.0001)	0.0099 (p=0.003)	0.0146 (p=0.0001)	0.0602 (p<0.0001)
Edmonton Frailty Scale	0.0139 (p=0.0001)	-	0.0106 (p=0.002)	0.0021 (p=0.14)	0.0073 (p=0.006)	0.0481 (p<0.0001)
Fried Criteria	0.0208 (p<0.0001)	0.0245 (p<0.0001)	-	0.0009 (p=0.4)	0.0098 (p=0.005)	0.0599 (p<0.0001)
Katz ADL	0.0441 (p<0.0001)	0.0593 (p<0.0001)	0.0569 (p<0.0001)	-	0.0224 (p<0.0001)	0.0776 (p<0.0001)
GP Cognition Test	0.0479 (p<0.0001)	0.0630 (p<0.0001)	0.0527 (p<0.0001)	0.0210 (p<0.0001)	-	0.0832 (p<0.0001)
EuroSCORE II	0.0259 (p<0.0001)	0.0425 (p<0.0001)	0.0280 (p<0.0001)	0.0149 (p=0.0005)	0.0219 (p<0.0001)	-

B.

Initial assessment						
	+Clinical FS	+Edmonton FS	+Fried Criteria	+Katz ADL	+GP Cog	+EuroSCORE II
Clinical Frail Scale	-	0.0350 (p<0.0001)	0.0282 (p<0.0001)	0.0185 (p=0.0002)	0.0024 (p=0.1)	0.0136 (p=0.0007)
Edmonton Frailty Scale	0.0005 (p=0.5)	-	0.0088 (p=0.01)	0.0080 (p=0.01)	0.0005 (p=0.4)	0.0078 (p=0.007)
Fried Criteria	0.0021 (p=0.1)	0.0116 (p=0.004)	-	0.0080 (p=0.03)	0.0007 (p=0.3)	0.0137 (p=0.003)
Katz ADL	0.0073 (p=0.005)	0.0300 (p<0.0001)	0.0315 (p<0.0001)	-	0.0045 (p=0.03)	0.0145 (p=0.0004)
GP Cognition Test	0.0142 (p<0.0001)	0.0463 (p<0.0001)	0.0391 (p<0.0001)	0.0283 (p<0.0001)	-	0.0190 (p<0.0001)
EuroSCORE II	0.0090 (p=0.003)	0.0409 (p<0.0001)	0.0277 (p<0.0001)	0.0256 (p<0.0001)	0.0063 (p=0.01)	-