

SUPPLEMENTAL INFORMATION (SI)

SUPPLEMENTAL METHODS

Study cohort and phenotypic analysis performed in BKSR

All kidney stone formers (KSF), including first-time stone formers, referred for metabolic work-up to at the Department of Nephrology and Hypertension, Bern University Hospital, Bern, Switzerland are invited to participate in the BKSR. The BKSR adheres to the Declaration of Helsinki and was approved by the ethical committee of the Kanton of Bern (approval # BE 95/06). Inclusion criteria for the BKSR are i) written informed consent, ii) age ≥ 18 years, and iii) ≥ 1 past kidney stone episode¹⁻⁴. There were no pre-specified exclusion criteria. BKSR participants underwent a detailed metabolic work-up under free choice diet and thereafter 1 week of instructed low-calcium (15–20 mmol/d) and low-sodium (100 mmol/d) diet. Blood and urine analyses were performed at the Central Laboratory of the Bern University Hospital. Kidney stone composition analysis was performed at the Central Laboratory of the Bern University Hospital by Fourier transform infrared spectroscopy⁵.

Non-stone forming individuals (NKSF) were recruited internally and consist of volunteers and patients seen for evaluation of arterial hypertension. Inclusion criteria for NKSF were i) written informed consent, ii) age ≥ 18 years, and iii) no history of past kidney stone episodes and no evidence of asymptomatic nephrolithiasis or nephrocalcinosis on ultrasound at the time of enrolment. All NKSF underwent a metabolic work-up that was similar to BKSR participants (Fig.1)

Detailed information on preparation and analysis of genetic data

Genomic DNA was isolated from peripheral blood leucocytes (NucleoSpin, Macherey-Nagel, Switzerland). Exomes were captured using the Agilent SureSelect Human All Exon v6-Kit (Santa Clara, CA), and high-throughput sequencing was performed on a HiSeq X-Ten platform

(Illumina, San Diego, CA). Reads were aligned to the human reference genome (Genome Reference Consortium build 38 (GRCh38)/human genome 38 (hg38) with Burrows-Wheeler Aligner 0.7.17-r1188 (BWA) ⁶. BAM files were generated and sorted by SAMtools 1.10 ⁷. Duplicates were removed with Picard 2.20.0 (Broad Institute, Cambridge, MA). Variant calling was conducted using Genome analysis Toolkit v3.8 (Broad Institute, Cambridge, MA) to call single nucleotide variants (SNVs), small insertions and deletions (InDels). The obtained VCFs were annotated using Ensembl Variant Effect Predictor Release 106 (VEP) ⁸. Pooled VCF files of all patients were imported in a dedicated MySQL-database (MariaDB 10.4), and variants filtered for region of interest (exons and splice regions), predicted consequences (protein truncating, mRNA splicing, missense, synonymous, insertion/deletion), genome aggregation database (gnomAD) minor allele frequency (<1% in all populations) ⁹ to allow analysis of 34 genes previously implicated in Mendelian (monogenic) kidney stone disease according to recommendations of the American College of Medical Genetics and Genomics (ACMG) ¹⁰.

Variant classification criteria used for “LP/P variants” and case/control prevalence (enrichment) calculations

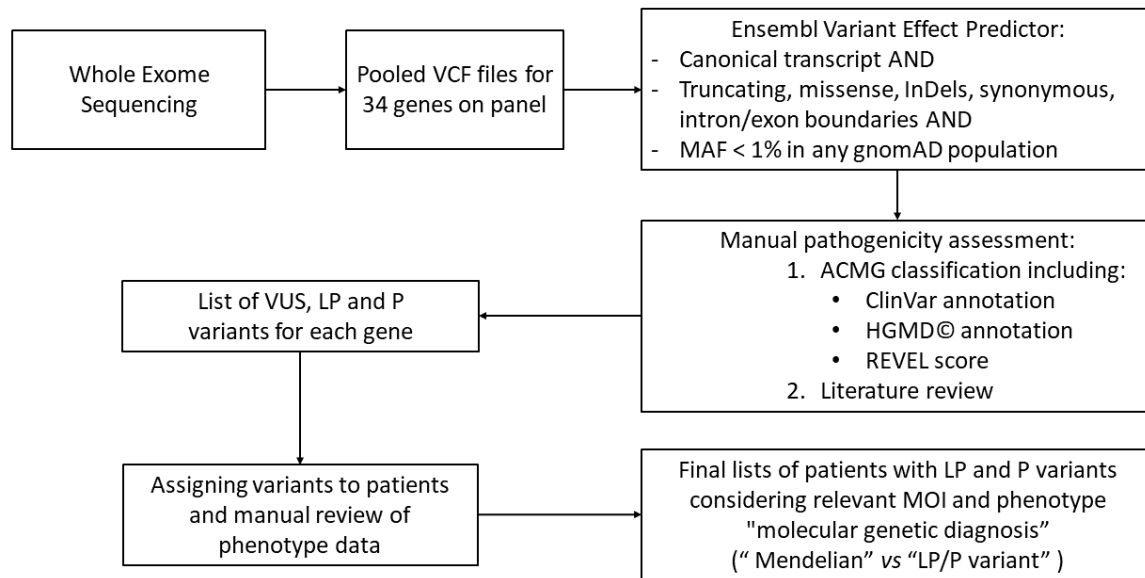
Monoallelic/heterozygous diagnostic (LP or P) variants in genes with insufficient or debated evidence for monoallelic/autosomal dominant (AD) Mendelian disease but sufficient evidence (e.g., enrichment on stone formers, predicted or experimental evidence for pathogenicity, predicted or experimental evidence for incomplete penetrance) for intermediate effect size from this study and/or from published case/control studies were labeled “LP/P variants predisposing to nephrolithiasis” (e.g., *ADCY10*, *CASR*, *SLC4A1*, *SLC9A3R1*)¹¹⁻¹⁶. Similarly, monoallelic LP or P variants in genes with reported biallelic/autosomal recessive (AR) inheritance where evidence for genotype dosage effects has been reported (e.g., for *CLDN16*, *CYP24A1* *SLC7A9*,

SLC34A1, *SLC34A3*), were labeled “LP/P variants predisposing to nephrolithiasis”¹⁷⁻²² In both cases, variants are referred to as “LP/P variants” in the manuscript.

Case and control prevalences for monoallelic predicted deleterious (LP/P) variants conferring a potential genetic predisposition for kidney stones (in *CLDN16*, *CASR*, *CYP24A1*, *SLC7A9*, *SLC9A3R1*, *SLC34A1* *SLC34A3*) were calculated based on their prevalence in the present study (787 KSF) and the prevalence of selected variants (ClinVar LP/P variants including/and the specific variants identified in this study) in Non-Finnish Europeans in gnomAD. A statistical difference in prevalence (as a potential sign for enrichment) was calculated using the Fishers exact test.

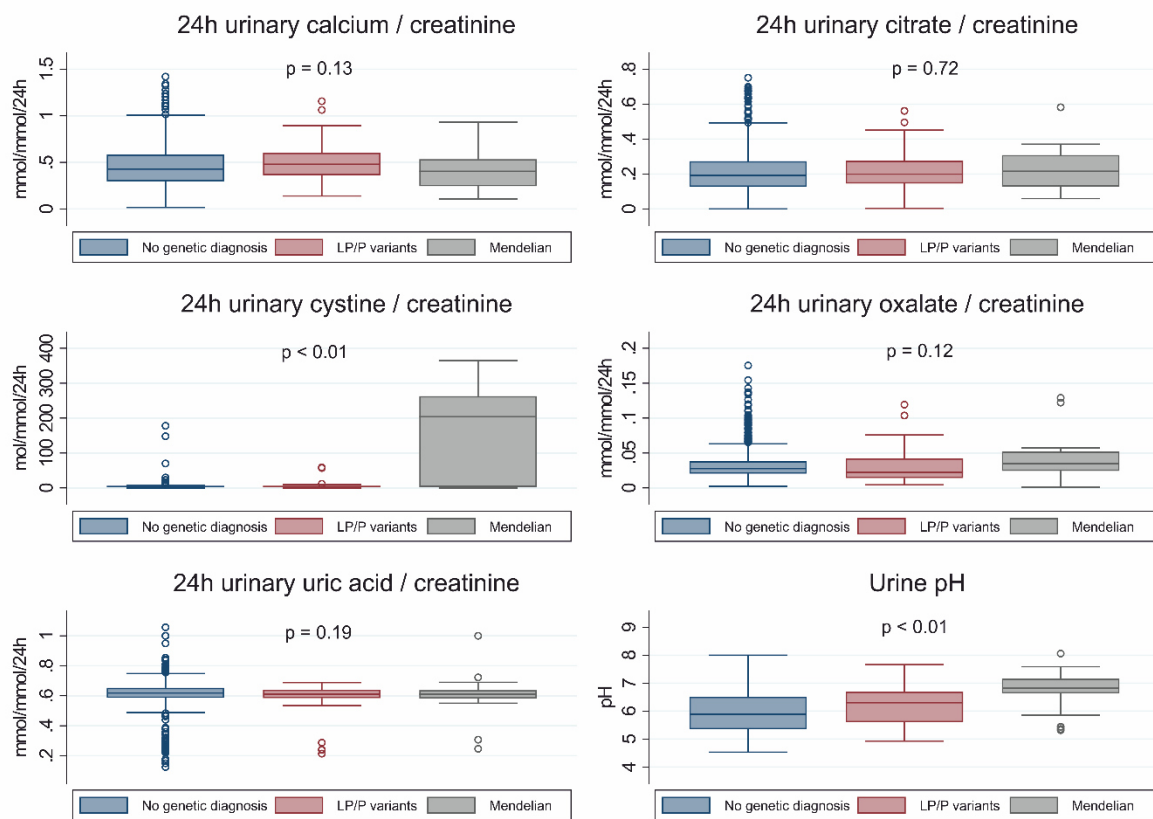
SUPPLEMENTAL FIGURES AND TABLES

Supplemental Figure 1



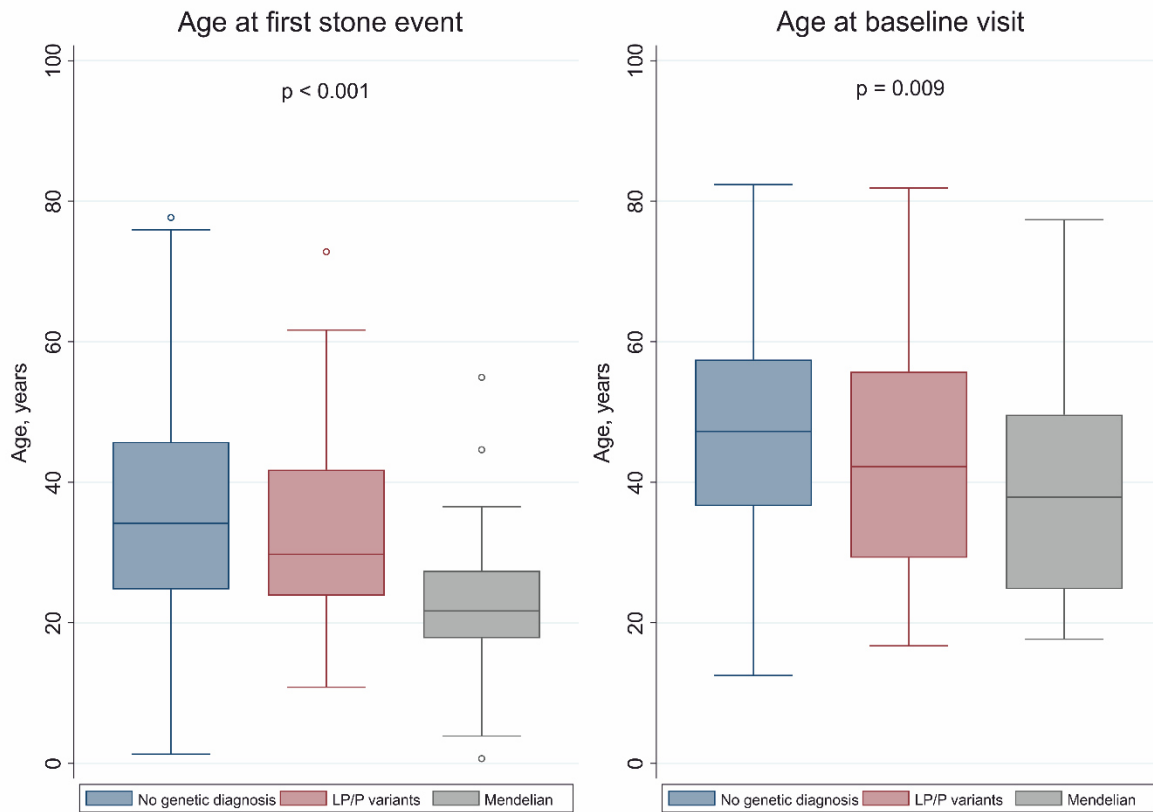
Stratification pathway used for whole exome sequencing (WES) data in the Bern Kidney Stone Registry (BKSR). Genetic analysis was performed in a standardized prioritization pathway in 34 known nephrolithiasis genes, followed by interdisciplinary review and classification according to the diagnostic criteria of the American College of Medical Genetics and Genomics (ACMG) with subsequent genotype-phenotype analysis. WES was performed using the Agilent SureSelect Human All Exon v6-Kit on a HiSeq X-10 platform from Illumina©. Only variants classified as likely pathogenic (LP; ACMG class IV) or pathogenic (P; ACMG class V) were defined as diagnostic variants after automated classification using Varsome & Franklin and independent manual review by 3 clinician scientists and 1 geneticist. ACMG: American College of Medical Genetics and Genomics, gnomAD: Genome Aggregation Database, HGMD©: Human Gene Mutation Database, LP: Likely pathogenic, MAF: Minor allele frequency, MOI: Mode of inheritance, P: Pathogenic, REVEL: Rare exome variant ensemble learner, VCF: Variant Call Format, VUS: Variant of unknown significance.

Supplemental Figure 2



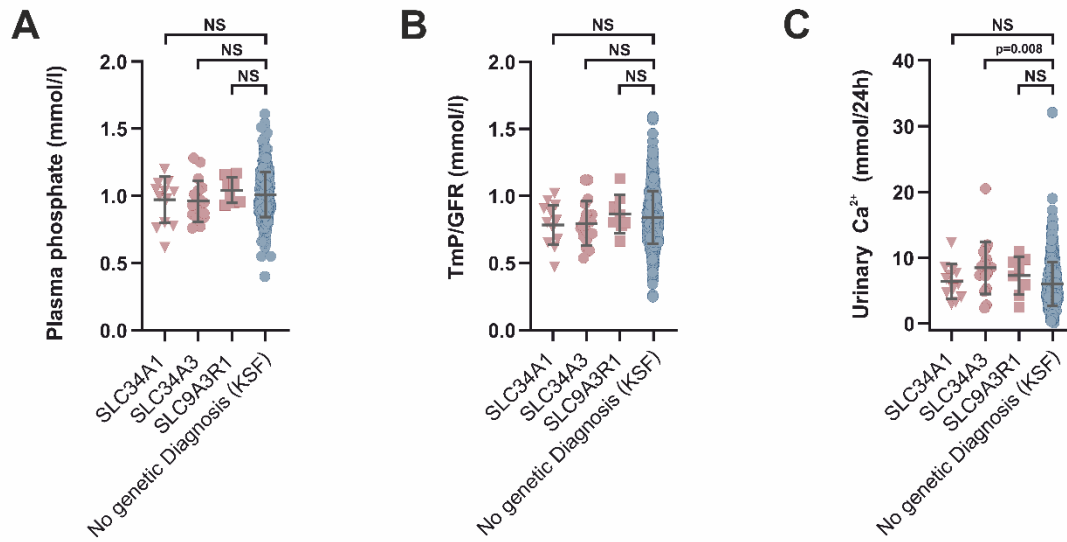
24h urinary risk factors stratified by WES results. Boxplots of promoters and inhibitors of stone formation between participants without genetic diagnosis, with Mendelian diagnosis and with LP/P variants predisposing to nephrolithiasis (LP/P variants) in the BKSr. Values reported are creatinine-normalized 24h urines solute excretions, except urine pH. Boxplots show medians with 25th-75th percentiles. Whiskers represent the range of values within 1.5 times the interquartile range from the first and third quartiles. Hollow circles are outliers.

Supplemental Figure 3



Age of first visit and age of first stone event stratified by type of genetic diagnosis (Mendelian vs LP/P). Boxplots of the ages at first visit and first stone event in the BKSr stratified by patients without genetic diagnosis, with Mendelian diagnosis and with LP/P variants predisposing to nephrolithiasis (LP/P variants). Boxplots show medians with 25th-75th percentiles. Whiskers represent the range of values within 1.5 times the interquartile range from the first and third quartiles. Hollow circles are outliers.

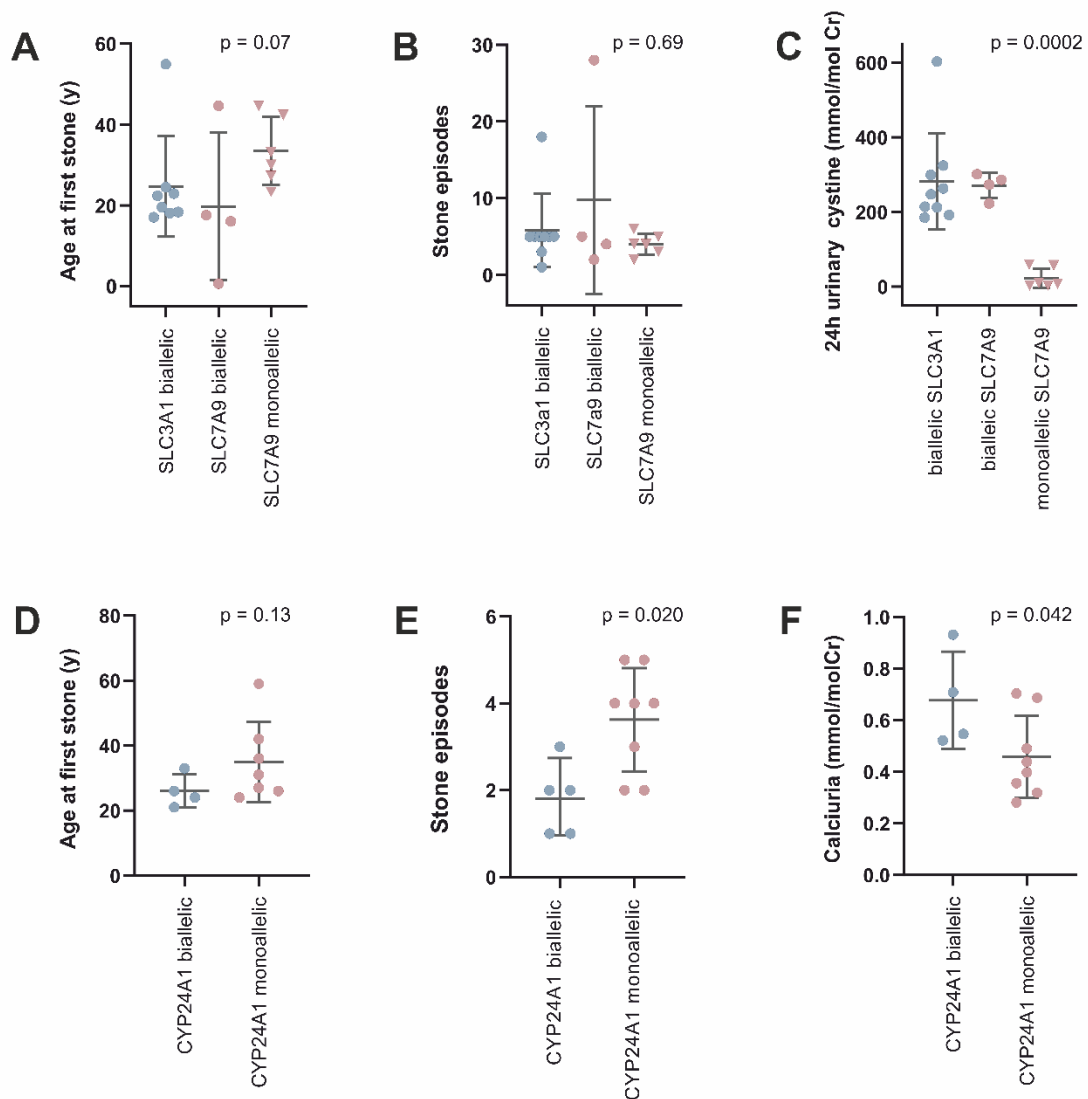
Supplemental Figure 4



Genotype–phenotype correlations for monoallelic LP/P phosphate transporter variants.

Plasma phosphate (A), urinary phosphate loss visualized by Tmp/GFR (B), Urine calcium/24h stratified according to genetic diagnosis for urinary phosphate loss (C), Each dot represents combined data from available values/individual. Data are shown as observations/individual with mean \pm SD. Statistical analysis: Mann-Whitney U test or Kruskal-Wallis-test, where applicable, were used for non-normally distributed continuous variables.

Supplemental Figure 5



Genotype–phenotype correlations. Cystinuria (A-C): Age at 1st stone (A), number of stone episodes (B), Urinary Cystine stratified according to genetic diagnosis for cystinuria (C), *CYP24A1*-variants (D-F): age at 1st stone, number of stone episodes (E), Urinary calcium stratified according to genetic diagnosis (F). Each dot represents combined data from available values/individual. Data are shown as observations/individual with mean ± SD. Statistical analysis: Mann-Whitney U test or Kruskal-Wallis-test, where applicable, were used for non-normally distributed continuous variables.

Supplementary Table 1. Genotype and phenotype of patients with LP/P variants predisposing to nephrolithiasis): see attached file “Suppl_Table_1”.

Supplementary Table 2: List of likely pathogenic (LP) or pathogenic (P) variants (including LP/P variants predisposing to nephrolithiasis) in BKSR: see separate table “Suppl_Table_2”.

Supplementary Table 3 | Characteristics of stone formers stratified by stone events number. Characteristics are indicated separately for first time and recurrent (> 1 stone event) stone formers. Categorical variables are described by number of participants N (%), continuous variables are described by their mean (SD) or median (25th-75th percentile). eGFR, estimated glomerular filtration rate; BSA, body surface area; PTH, parathyroid hormone; SD, standard deviation.

Characteristics	First time stone formers (N=134)	Recurrent stone formers (N=614)	p-values
Age, years	38.86 (15.88)	48.31 (13.48)	<0.001
Males	85 (63.4%)	458 (74.6%)	0.007
Body mass index, kg/m ²	25.58 (5.40)	27.08 (4.94)	0.002
Hypertension	38 (29.5%)	216 (37.6%)	0.086
Diabetes	3 (2.3%)	20 (3.3%)	0.78
Obesity, BMI > 30 kg/m ²	23 (17.8%)	140 (23.0%)	0.24
Hyperuricemia	51 (38.3%)	270 (44.0%)	0.25
Family history of kidney stone disease	55 (42.6%)	262 (43.8%)	0.85
Kidney stone recurrence, > 1 stone event	0 (0.0%)	614 (100.0%)	<0.001
Age at first stone event, years	36.97 (15.84)	35.07 (13.37)	0.16
Total number of stone events	1.00 (1.00, 1.00)	3.00 (2.00, 5.00)	<0.001
Mendelian diagnosis	4 (3.0%)	19 (3.1%)	0.97
LP/P variants	14 (10.4%)	50 (8.1%)	0.39
Blood parameters			
Total calcium, mmol/L	2.36 (0.12)	2.35 (0.12)	0.89
Ionized calcium, mmol/L	1.21 (1.19, 1.24)	1.21 (1.19, 1.23)	0.76
Phosphorus, mmol/L	1.04 (0.16)	1.00 (0.17)	0.008
Magnesium, mmol/L	0.82 (0.06)	0.83 (0.07)	0.58
Uric acid, umol/L	343.35 (369.69)	325.66 (82.28)	0.29
Intact PTH, ng/L	35.00 (27.30, 45.00)	40.88 (30.50, 53.00)	0.002
25-OH Vitamin D ₃ , nmol/L	40.00 (23.00, 64.00)	40.36 (27.09, 59.00)	0.96
eGFR creatinine Equation CKD-EPI 2009, mL/min per 1.73 m ² BSA	102.77 (88.91, 119.15)	94.66 (80.34, 107.55)	<0.001
Urine parameters			
Total urine volume, L/24h	1.83 (1.40, 2.51)	2.02 (1.49, 2.54)	0.11
Urine pH	5.80 (5.32, 6.50)	5.96 (5.40, 6.61)	0.25
Urine sodium / creatinine ratio, mmol/mmol/24h	13.28 (10.76, 16.85)	13.64 (11.04, 16.99)	0.61
Urine potassium / creatinine ratio, mmol/mmol/24h	4.61 (3.61, 5.68)	4.71 (3.83, 5.88)	0.49
Urine uric acid / creatinine ratio, mmol/mmol/24h	0.60 (0.12)	0.62 (0.10)	0.052
Urine calcium / creatinine ratio, mmol/mmol/24h	0.43 (0.31, 0.56)	0.43 (0.30, 0.60)	0.62
Urine magnesium / creatinine ratio, mmol/mmol/24h	0.31 (0.25, 0.38)	0.30 (0.23, 0.38)	0.75
Urine citrate / creatinine ratio, mmol/mmol/24h	0.20 (0.12, 0.27)	0.19 (0.13, 0.28)	0.97
Urine phosphate / creatinine ratio, mmol/mmol/24h	2.15 (0.53)	2.20 (0.54)	0.39
Urine oxalate / creatinine ratio, mmol/mmol/24h	0.03 (0.02, 0.03)	0.03 (0.02, 0.04)	0.067
Urine cystine / creatinine ratio, mmol/mol/24h	4.00 (3.00, 5.00)	4.00 (3.00, 6.00)	0.065
Stone phenotypes			
Calcium oxalate dihydrate	11 (12.8%)	62 (13.0%)	1.00
Calcium oxalate monohydrate	46 (53.5%)	241 (50.4%)	0.64
Calcium phosphate	19 (22.1%)	111 (23.2%)	0.89
Uric acid	2 (2.3%)	35 (7.3%)	0.099
Cystine	4 (4.7%)	14 (2.9%)	0.50
Struvite	3 (3.5%)	12 (2.5%)	0.49

Supplementary Table 4 | Characteristics of stone formers with diagnostic variants (Mendelian and LP/P variants predisposing to nephrolithiasis) stratified by sex. Categorical variables are described by number of participants N (%), continuous variables are described by their mean (SD) or median (25th-75th percentile). eGFR, estimated glomerular filtration rate; BSA, body surface area; PTH, parathyroid hormone; SD, standard deviation.

Characteristics	Females (N=23)	Males (N=64)	p-values
Age, years	40.10 (16.43)	43.45 (15.64)	0.39
Body mass index, kg/m ²	25.43 (5.31)	26.25 (4.33)	0.47
Hypertension	10 (43%)	22 (40%)	0.80
Diabetes	0 (0%)	1 (2%)	1.00
Obesity, BMI > 30 kg/m ²	5 (22%)	11 (18%)	0.76
Hyperuricemia	6 (26%)	34 (53%)	0.030
Family history of kidney stone disease	9 (41%)	29 (49%)	0.62
Kidney stone recurrence, > 1 stone event	17 (74%)	50 (82%)	0.54
Age at first stone event, years	27.42 (13.73)	32.79 (13.75)	0.12
Total number of stone events	3.00 (1.00, 5.00)	3.00 (2.00, 4.00)	0.84
Blood parameters			
Total calcium, mmol/L	2.36 (0.11)	2.39 (0.12)	0.41
Ionized calcium, mmol/L	1.21 (1.17, 1.23)	1.22 (1.20, 1.25)	0.11
Phosphorus, mmol/L	1.03 (0.15)	0.98 (0.14)	0.20
Magnesium, mmol/L	0.82 (0.08)	0.83 (0.07)	0.34
Uric acid, umol/L	276.25 (78.67)	347.93 (65.14)	<0.001
Intact PTH, ng/L	34.00 (25.40, 57.00)	37.00 (25.00, 45.00)	0.84
25-OH Vitamin D ₃ , nmol/L	39.00 (23.00, 62.80)	44.00 (29.00, 62.00)	0.54
eGFR creatinine Equation CKD-EPI 2009, mL/min per 1.73 m ² BSA	93.65 (79.29, 100.54)	98.07 (81.16, 108.74)	0.32
Urine parameters			
Total urine volume, L/24h	2.93 (2.28, 3.85)	2.10 (1.36, 2.51)	<0.001
Urine pH	6.63 (5.76, 6.90)	6.43 (5.63, 6.84)	0.62
Urine sodium / creatinine ratio, mmol/mmol/24h	18.91 (14.85, 21.55)	12.69 (10.75, 16.34)	<0.001
Urine potassium / creatinine ratio, mmol/mmol/24h	6.55 (5.41, 7.35)	4.44 (3.73, 5.56)	<0.001
Urine uric acid / creatinine ratio, mmol/mmol/24h	0.60 (0.17)	0.59 (0.09)	0.93
Urine calcium / creatinine ratio, mmol/mmol/24h	0.45 (0.40, 0.64)	0.44 (0.33, 0.55)	0.38
Urine magnesium / creatinine ratio, mmol/mmol/24h	0.40 (0.24, 0.47)	0.30 (0.23, 0.35)	0.077
Urine citrate / creatinine ratio, mmol/mmol/24h	0.24 (0.17, 0.33)	0.19 (0.14, 0.25)	0.083
Urine phosphate / creatinine ratio, mmol/mmol/24h	2.08 (0.44)	2.17 (0.47)	0.43
Urine oxalate / creatinine ratio, mmol/mmol/24h	0.04 (0.02, 0.06)	0.02 (0.01, 0.04)	0.018
Urine cystine / creatinine ratio, mmol/mol/24h	8.00 (3.50, 204.50)	4.00 (3.00, 8.00)	0.071
Stone phenotypes			
Calcium oxalate dihydrate	0 (0%)	7 (16%)	0.093
Calcium oxalate monohydrate	5 (28%)	18 (42%)	0.39
Calcium phosphate	4 (22%)	11 (26%)	1.00
Uric acid	0 (0%)	1 (2%)	1.00
Cystine	7 (39%)	4 (9%)	0.011
Struvite	2 (11%)	1 (2%)	0.21

Supplementary Table 5: Case/control prevalence (enrichment) calculation for LP/P variants present in KSF from the BKSR vs NKSF form the BKSR and vs gnomAD (NFE):

BKSR: Bern Kidney Stone Registry, KSF: Kidney stone formers, NKSF: Non kidney stone forming controls, LP: likely pathogenic, P: pathogenic, NFE: non-finnish europeans.

Gene	LP/P reported in the BKSR	total KSF in BKSR	Prevalence in BKSR	L/P in NKSF	total NKSF	Prevalence in NKSF	ClinVar LP/P variants reported in gnomAD NFE (and the specific LP/P variants reported in the BKSR)	total gnomAD NFE participants (rounded)	Prevalence in gnomAD (NFE)	p-Value (Fishers) for independence
CASR	4	787	0.51%	0	114	0%	30	57000	0.05%	0.0011
CLDN16 het	8	787	1.02%	0	114	0%	94	57000	0.16%	<0.0001
CYP24A1 het	8	787	1.02%	0	114	0%	542	57000	0.95%	0.85
SLC34A1 het	15	787	1.91%	0	114	0%	541	57000	0.95%	0.014
SLC34A3 het	18	787	2.29%	1	114	0.88%	262	57000	0.46%	< 0,0001
SLC7A9 het	7	787	0.89%	0	114	0%	676	57000	1.19%	0.62

Gene	Frequency of R153Q variant in the BKSR	total KSF in BKSR	Prevalence in BKSR	L/P in NKSF	total NKSF	Prevalence in NKSF	Frequency of R153Q variant (no LP/P in gnomAD)	total gnomAD NFE participants	Prevalence of R153Q in gnomAD (NFE)	p-Value (Fishers) for independence
SLC9A3R1	7	787	0.89%	1	115	0.88%	435	64,541	0.67%	0.38

Supplementary Table 6: Patients with cystine stones, clinical cystinuria or elevated urinary cystine but without diagnostic or LP/P variants predisposing to nephrolithiasis in cystinuria genes (*SLC3A1/SLC7A9*)

M: male, F: female, Family history/Cystine Stone: N= no, Y=yes, NL: Nephrolithiasis, NC: Nephrocalcinosis, CKD: chronic kidney disease. PSC: primary sclerosing cholangitis, Stone analysis: CaOx: Calcium oxalate, COM: Calcium oxalate monohydrate, COD: Calcium oxalate dihydrate, CA: Carbonate apatite. Creat: Creatinine, Urinary cystine: Norm: <30 mmol/molCreat)

ID	Sex	Age at first stone (range)	Number of past stone events	Stone composition analysis (%)	Family history	Key Phenotype	Clinical diagnosis before WES	Cystine Stone	Cystine Percentage	Urinary Cystine (mmol/mol Creat.)	Urinary Ornithine (mmol/mol Creat.)	Urinary Lysine (mmol/mol Creat.)	Urinary Arginine (mmol/mol Creat.)
5215	F	16-20	5	100 Cystine	N	Cystine-NL, Cystinuria, Hyperoxaluria	Cystinuria,	Y	100	148	70	305	
5466	M	41-45	1	80 COD, 20 Cystine	N	COD/Cystine NL, Hypocitraturia	PSC, chronic inflammatory bowel disease,	Y	20	3	0	7	0
5475	M	26-30	1	80 COD, 20 Cystine	N	COD/Cystine NL, Hyperuricemia	Idiopathic NL	Y	20	3	0	10	0
5480	M	21-25	4	80 COD, 20 Cystine	Y	COD/Cystine NL, Osteopenia	Idiopathic NL	Y	20	4	0	9	0
5494	M	31-35	7	80 COD, 20 COM	Y	CaOx NL, Cystinuria, Osteopenia	Cystinuria without Cystine Stones	N	0	70	35	344	14
5513	M	46-50	5	N/A	Y	borderline Cystinuria	Idiopathic NL	N	N/A	30	8	107	7
5527	M	11-15	5	90 Cystine, 10 CA	Y	Cystine-NL, Cystinuria, Hypocitraturia, Hyperuricemia	Cystinuria	Y	90	178	187	642	227
5540	M	21-25	1	80 COM, 20 Cystine	N	COD/Cystine NL, Hyperuricemia	Idiopathic NL	Y	20	3	0	9	0
5833	M	11-15	5	90 Cystine, 10 CA	N	Cystine-NL, Hyperoxaluria, Hyperuricemia	Cystinuria	Y	90	N/A	N/A	N/A	N/A

Supplementary references:

1. Dhayat NA, Schaller A, Albano G, et al. The Vacuolar H⁺-ATPase B1 Subunit Polymorphism p.E161K Associates with Impaired Urinary Acidification in Recurrent Stone Formers. *J Am Soc Nephrol*. 2016;27(5):1544-1554.
2. Dhayat NA, Luthi D, Schneider L, Mattmann C, Vogt B, Fuster DG. Distinct phenotype of kidney stone formers with renal phosphate leak. *Nephrol Dial Transplant*. 2019;34(1):129-137.
3. Dhayat NA, Schneider L, Popp AW, et al. Predictors of Bone Mineral Density in Kidney Stone Formers. *Kidney Int Rep*. 2022;7(3):558-567.
4. Fuster DG, Morard GA, Schneider L, et al. Association of urinary sex steroid hormones with urinary calcium, oxalate and citrate excretion in kidney stone formers. *Nephrol Dial Transplant*. 2022;37(2):335-348.
5. Cloutier J, Villa L, Traxer O, Daudon M. Kidney stone analysis: "Give me your stone, I will tell you who you are!". *World J Urol*. 2015;33(2):157-169.
6. Li H, Durbin R. Fast and accurate short read alignment with Burrows-Wheeler transform. *Bioinformatics*. 2009;25(14):1754-1760.
7. Danecek P, Bonfield JK, Liddle J, et al. Twelve years of SAMtools and BCFtools. *Gigascience*. 2021;10(2).
8. McLaren W, Gil L, Hunt SE, et al. The Ensembl Variant Effect Predictor. *Genome Biol*. 2016;17(1):122.
9. Karczewski KJ, Francioli LC, Tiao G, et al. The mutational constraint spectrum quantified from variation in 141,456 humans. *Nature*. 2020;581(7809):434-443.
10. Richards S, Aziz N, Bale S, et al. Standards and guidelines for the interpretation of sequence variants: a joint consensus recommendation of the American College of Medical Genetics and Genomics and the Association for Molecular Pathology. *Genet Med*. 2015;17(5):405-424.
11. Reed BY, Gitomer WL, Heller HJ, et al. Identification and characterization of a gene with base substitutions associated with the absorptive hypercalciuria phenotype and low spinal bone density. *J Clin Endocrinol Metab*. 2002;87(4):1476-1485.
12. Daga A, Majmundar AJ, Braun DA, et al. Whole exome sequencing frequently detects a monogenic cause in early onset nephrolithiasis and nephrocalcinosis. *Kidney Int*. 2018;93(1):204-213.
13. Karim Z, Gerard B, Bakouh N, et al. NHERF1 mutations and responsiveness of renal parathyroid hormone. *N Engl J Med*. 2008;359(11):1128-1135.
14. Stratta P, Merlotti G, Musetti C, et al. Calcium-sensing-related gene mutations in hypercalcaemic hypocalciuric patients as differential diagnosis from primary hyperparathyroidism: detection of two novel inactivating mutations in an Italian population. *Nephrol Dial Transplant*. 2014;29(10):1902-1909.
15. Raue F, Pichl J, Dorr HG, et al. Activating mutations in the calcium-sensing receptor: genetic and clinical spectrum in 25 patients with autosomal dominant hypocalcaemia - a German survey. *Clin Endocrinol (Oxf)*. 2011;75(6):760-765.
16. Ito N, Ihara K, Kamoda T, et al. Autosomal dominant distal renal tubular acidosis caused by a mutation in the anion exchanger 1 gene in a Japanese family. *CEN Case Rep*. 2015;4(2):218-222.
17. Sadeghi-Alavijeh O, Chan MMY, Moochhala SH, et al. Rare variants in the sodium-dependent phosphate transporter gene SLC34A3 explain missing heritability of urinary stone disease. *Kidney Int*. 2023.

18. Nwachukwu C, Singh G, Moore B, Strande NT, Bucaloiu ID, Chang AR. Risk of Nephrolithiasis in Adults Heterozygous for SLC34A3 Ser192Leu in an Unselected Health System Cohort. *J Am Soc Nephrol*. 2023.
19. Weber S, Schneider L, Peters M, et al. Novel paracellin-1 mutations in 25 families with familial hypomagnesemia with hypercalciuria and nephrocalcinosis. *J Am Soc Nephrol*. 2001;12(9):1872-1881.
20. Tebben PJ, Milliner DS, Horst RL, et al. Hypercalcemia, hypercalciuria, and elevated calcitriol concentrations with autosomal dominant transmission due to CYP24A1 mutations: effects of ketoconazole therapy. *J Clin Endocrinol Metab*. 2012;97(3):E423-427.
21. Cools M, Goemaere S, Baetens D, et al. Calcium and bone homeostasis in heterozygous carriers of CYP24A1 mutations: A cross-sectional study. *Bone*. 2015;81:89-96.
22. Carpenter TO. Take another CYP: confirming a novel mechanism for "idiopathic" hypercalcemia. *J Clin Endocrinol Metab*. 2012;97(3):768-771.

Supplementary Table 1: Genotype and phenotype of patients with monoallelic LP/P variants for KSD. Monoallelic LP/P variants in genes with AD-inheritance are seen as intermediate effect variants predisposing to KSD. Monoallelic LP/P variants in genes with AR inheritance with evidence of gene dosage effect are seen as predisposing for KSD. Acc.N°: RefSeq accession number, ACMG: American College of Medical Genetics, AF: allele frequency, AR: autosomal recessive, AD: autosomal dominant, allel: alleles, dbSNP: Reference SNP number of variant, het: heterozygous, hom: homozygous, , LP: likely pathogenic, P: pathogenic, tot: total, Novel: mutation detected for the first time in this study/not previously described, NS: nonsense, Family history: N= no, Y=yes, , M: male, F: female, mo: months, NL: Nephrolithiasis, NC: Nephrocalcinosis, dRTA: distal renal tubular acidosis, PHPTH: primary hyperparathyroidism, CKD: chronic kidney disease. Stone analysis: CaOx: Calcium oxalate, COM: Calcium oxalate monohydrate, COD: Calcium oxalate dihydrate, CaP: Calcium phosphate, CA: Carbonate apatite, Brushite: Calcium hydrogen phosphate dihydrate, MAP: Magnesium ammonium phosphate (=Struvite), UA: Uric acid.

ID	Gene	Inheritance	Allelic state	Nucleotide change	Amino acid change	ACMG Class	ACMG criteria	AF gnoMAD (allel/tot/hom) gnoMAD (NFE)	Acc. N° dbSNP	Sex	Age at first stone (range)	Number of past stone events	Stone composition analysis (%)	Family history	Key Phenotype	Clinical diagnosis before WES	Genetic diagnosis after WES
ADCY10 – Idiopathic Hypercalciuria																	
5750	<i>ADCY10</i>	AD	het	c.4477del	p.Leu1493SerfsTer24	P	PVS1, PM2, PP5	92/251.456/0 54/113.736/0	NM_018417.6 rs576118131	M	16-20	2	50 UA, 50 UA dihydrate	N	UA NL, DM II Hypercalciuria (5.3) Low urine pH (4.8)	UA NL	Absorptive hypercalciuria
CASR –Familial hypocalciuric hypercalcemia type 1 (FHH1) / Autosomal Dominant Hypercalciuria Hypocalcemia (ADH)																	
5026	<i>CASR</i>	AD	het	c.206G>A	p.Arg69His	LP	PM2, PM5, PM1supp, PP2, PP3, PP5	1/251.300/0 0/113.596/0	NM_000388.4 rs193922432	F	16-20	1	N/A	N	NL (radiopaque stones) Hypercalcemia (total: 2.7; ionized 1.37) Normal plasma phosphate (0.9) Normal urine calcium (2.9) Normal PTH (19)	Idiopathic NL	CASR-associated KSD
5666	<i>CASR</i>	AD	het	c.1942C>T	p.Arg648Ter	P	PVS1s, PM2, PP5	3/251.356/0 1/113.760/0	NM_000388.4 rs1185593894	M	36-40	3	90 COM, 10 UA	Y	CaOx NL, osteopenia Normal plasma calcium (2.46) Hypercalciuria (9.35) Normal PTH (27)	Idiopathic NL	CASR-associated KSD
5686	<i>CASR</i>	AD	het	c.269A>C	p.Asn90Thr	LP	PM2, PM1supp, PP2, PP3, PP5	2/251.398/0 2/113.682/0	NM_000388.4 rs193922439	M	26-30	2	1) 100 COM; 2) 60 COM, 30 COD, 10 CA	N	CaOx NL Normal plasma calcium (2.44) Hypercalciuria (5.88) Normal PTH (25)	Idiopathic NL	CASR-associated KSD
6023	<i>CASR</i>	AD	het	c.848T>C	p.Ile283Thr	LP	PM2, PP3, PP2, PP5m	26/251.332/0 20/113.650/0	NM_000388.4 rs142745096	M	N/A	N/A	2) 90 COD, 5 COD, 5 CA	N	CaOx NL, PHPT Hypercalcemia (total: 2.8; ionized 1.38) Hypophosphatemia (0.52) Hypercalciuria (12.2) High PTH (111)	PHPT, s/p parathyroidect-omy	CASR-associated KSD

CYP24A1 – (Infantile) HC/NL, 1,25-OH vitamin D-24 hydroxylase deficiency / CYP24A1-associated kidney stone disease																	
5028	CYP24A1	AR	het	c.428_430 del	p.Glu143del	P	PM2, BS2, PM4, PP5vs	133/251.266/1 119/113.708/1	NM_000782.5 rs777676129	M	56-60	3	1): 50 COD, 25 CA, 25 MAP, 2): 90 Brushite, 10 COD	N	CaOx NL, osteopenia. Normal plasma calcium (total: 2.44; ionized 1.28) Normal PTH (37) Normal 1,25 Vit D (156) Hypercalciuria (11.35)	Idiopathic NL	CYP24A1- associated kidney stone disease
	SLC9A3R1	AR	het	c.458G>A	p.Arg153Gln	LP	PS3s, PM2, BP6supp	462/251.340/1 381/113.668/2	NM_004252.5 rs41282065								SLC9A3R1- related kidney stone disease
5037	CYP24A1	AR	het	c.1315C>T	p.Arg439Cys	LP	PP3s, PM2, PP5	10/251.358/0 8/113.670/0	NM_000782.5 rs374292194	M	31-35	2	90 COM, 10 COD	N	CaOx NL, osteopenia Normal plasma calcium (total 2.43; ionized 1.23) Normal PTH (34) Normal 25-Vit D (35) Normal 1,25-Vit D (98) Hypercalciuria (5.8)	Idiopathic NL	CYP24A1- associated kidney stone disease
5313	CYP24A1	AR	het	c.1186C>T	p.Arg396Trp	P	PM2, PM5, PP3m, PP5vs	167/251.228/1 124/113.676/1	NM_000782.5 rs114368325	M	N/A	4	80 COM, 20 COD	Y	CaOx NL, osteopenia Normal plasma calcium (total 2.46; ionized 1.25) Normal PTH (28) Low 25-Vit D (30) Normal 1,25-Vit D (153) Normal urine calcium (2.4)	Idiopathic NL	CYP24A1- associated kidney stone disease
5377	CYP24A1	AR	het	c.1226T>C	p.Leu409Ser	LP	PM2, PP5vs	188/251.066/0 153/113.656/0	NM_000782.5 rs6068812	M	36-40	5	1) 95 COM/COD, 5 CA 2) 20 COM, 80 UA 2) 20 COD, 80 UA	N	CaOx NL, Normal plasma calcium (total 2.34; ionized 1.23) Normal PTH (31) Low 25-Vit D (12) Normal 1,25-Vit D (51) Hypercalciuria (8.2)	Idiopathic NL	CYP24A1- associated kidney stone disease
5589	CYP24A1	AR	het	c.428_430del	p.Glu143del	P	PM2, BS2, PM4, PP5vs	133/251.266/1 119/113.708/1	NM_000782.5 rs777676129	M	21-25	2	70 COM, 30 COD	Y	CaOx NL, Normal plasma calcium (total 2.21; ionized 1.23) Normal PTH (43) Low 25-Vit D (62) Normal 1,25-Vit D (67) Hypercalciuria (5.6)	Idiopathic NL	CYP24A1- associated kidney stone disease

5711	<i>CYP24A1</i>	AR	het	c.1186C>T	p.Arg396Trp	P	PM2, PM5, PP3m, PP5vs	167/251.228/124/113.676/1	NM_000782.5 rs114368325	M	26-30	5	100 COM	Y	CaOx NL, Normal plasma calcium (total 2.38; ionized 1.21) Normal PTH (28) Normal 25-Vit D (84) Normal 1,25-Vit D (108) Hypercalciuria (6.9)	Idiopathic NL	CYP24A1-associated kidney stone disease	
5752	<i>CYP24A1</i>	AR	het	c.1315C>T	p.Arg439Cys	LP	PP3s, PM2, PP5	10/251.358/08/113.670/0	NM_000782.5 rs374292194	M	41-45	4	1) 90 COD, 5 COM, 5 CA 2) 90 COD, 5 COM, 5 CA	Y	CaOx NL, Osteoporosis Normal plasma calcium (total 2.09; ionized 1.19) Normal PTH (36) Normal 25-Vit D (52) Normal 1,25-Vit D (103) Hypercalciuria (5.8)	Idiopathic NL	CYP24A1-associated kidney stone disease	
5803	<i>CYP24A1</i>	AR	het	c.1226T>C	p.Leu409Ser	LP	PM2, PP5vs	188/251.066/0153/113.656/0	NM_000782.5 rs6068812	M	26-30	2	60 COD, 20 COM, 20 CA	N	CaOx NL Normal plasma calcium (total 2.29) Normal PTH (31) Normal 25-Vit D (59) Normal 1,25-Vit D (186) Hypercalciuria (8.3)	Idiopathic NL, incomplete dRTA, medullary NC	CYP24A1-associated kidney stone disease	
CLDN16 – Familial hypomagnesemia with hypercalciuria & nephrocalcinosis (FHHNC) / CLDN-16 associated kidney stone disease																		
5001	<i>CLDN16</i>	AR	het	c.458A>G	p.Asn153Ser	LP	PS4, PM1, PP2, BS2, PP5	83/251.464/161/113.742/0	NM_006580.4 rs201367228	M	41-45	4	N/A	N	NL, Normal plasma calcium (total 2.47; ionized 1.28) Normal plasma magnesium (0.89) Normal PTH (53) Normal 1,25-Vit D (110) Normal urine calcium (4.3) Normal urine magnesium (2.76)	Idiopathic NL	CLDN16-associated kidney stone disease	

5039	<i>CLDN16</i>	AR	het	c.458A>G	p.Asn153Ser	LP	PS4, PM1, PP2, BS2, PP5	83/251.464/1 61/113.742/0	NM_006580.4 rs201367228	M	16-20	5	90 COD, 10 COM	Y	CaOx NL Normal plasma calcium (total 2.37; ionized 1.19) Normal plasma magnesium (0.86) Normal PTH (40) Normal 1,25-Vit D (148) Hypercalciuria (8.4) Normal urine magnesium (4.82)	Idiopathic NL	CLDN16- associated kidney stone disease
5199	<i>CLDN16</i>	AR	het	c.458A>G	p.Asn153Ser	LP	PS4, PM1, PP2, BS2, PP5	83/251.464/1 61/113.742/0	NM_006580.4 rs201367228	M	36-40	3	80 COM, 20 COD	Y	CaOx NL Normal plasma calcium (total 2.29; ionized 1.2) Normal PTH (49) Low 25-Vit D (10) Low 1,25-Vit D (45) Normal urine calcium (3.7)	Idiopathic NL	CLDN16- associated kidney stone disease
5250	<i>CLDN16</i>	AR	het	c.458A>G	p.Asn153Ser	LP	PS4, PM1, PP2, BS2, PP5	83/251.464/1 61/113.742/0	NM_006580.4 rs201367228	F	46-50	3	N/A	Y	NL (radiopaque stones), Osteopenia, Ureter fissus Normal plasma calcium (total 2.21; ionized 1.21) Normal plasma magnesium (0.95) Normal PTH (32) Low 25-Vit D (16) Normal 1,25-Vit D (84) Hypercalciuria (6.7) Normomagnesiuria (4.96)	Idiopathic NL	CLDN16- associated kidney stone disease
5445	<i>CLDN16</i>	AR	het	c.458A>G	p.Asn153Ser	LP	PS4, PM1, PP2, BS2, PP5	83/251.464/1 61/113.742/0	NM_006580.4 rs201367228	M	36-40	2	90 COD, 10 COM	N	CaOx NL, Osteopenia Normal plasma calcium (total 2.3; ionized 1.18) Normal plasma magnesium (0.88) Normal PTH (44) Normal 25-Vit D (44) Normal 1,25-Vit D (107) Hypercalciuria (9.1) Normal urine magnesium (5.3)	Idiopathic NL	CLDN16- associated kidney stone disease

5712	CLDN16	AR	het	c.458A>G	p.Asn153Ser	LP	PS4, PM1, PP2, BS2, PP5	83/251.464/1 61/113.742/0	NM_006580.4 rs201367228	F	21-25	3	N/A	Y	NL, Osteopenia Normal plasma calcium (total 2.34; ionized 1.18) Normal plasma magnesium (0.79) Normal PTH (32) Normal 25-Vit D (52) Normal 1,25-Vit D (127) Hypercalciuria (7) Normal urine magnesium (4)	Idiopathic NL	CLDN16- associated kidney stone disease	
5776	CLDN16	AR	het	c.458A>G	p.Asn153Ser	LP	PS4, PM1, PP2, BS2, PP5	83/251.464/1 61/113.742/0	NM_006580.4 rs201367228	M	26-30	2	100 COM	Y	CaOx NL, Osteopenia, Papillary calcification Normal plasma calcium (total 2.36; ionized 1.17) Normal plasma magnesium (0.84) Normal PTH (53) Normal 25-Vit D (67) Normal 1,25-Vit D (111) Hypercalciuria (5.7) Normal urine magnesium (3.7)	Idiopathic NL	CLDN16- associated kidney stone disease	
5334	CLDN16 <i>*biallelic for CYP24A1</i>	AR	het	c.458A>G	p.Asn153Ser	LP	PS4, PM1, PP2, BS2, PP5	83/251.464/1 61/113.742/0	NM_006580.4 rs201367228	M	21-25	3	1) 90 COM, 10 COD; 2) 80 COM, 20 COD	Y	CaOx NL, osteopenia, multiple kidney cysts. Normal plasma calcium (total 2.48; ionized 1.27) Normal plasma magnesium (0.72) Low PTH (9) Normal 25-Vit D (59) Normal 1,25-Vit D (93) Hypercalciuria (14.3)	Idiopathic NL, polycystic kidney disease	CLDN16- associated kidney stone disease	
SLC4A1 – AD distal renal tubular acidosis (AD-dRTA)																		
5796	SLC4A1	AR	het	c.1166G>A	p.Arg389His	LP	PP3s, PM2	3/251.344/0 1/113.670/0	NM_000342.4 rs767059191	M	10-15	4	1) 90 COM, 20 COD 2) 100 COM 3) 90 COM, 10 COD 3) 90 COM, 10 COD	N	CaOx NL, DM II Variable urine pH 5.7 – 7.0 Hypocitraturia (1.7) Hyperoxaluria (564) Normal plasma bicarbonate (24) and pH 7.35	Idiopathic NL	AD-dRTA	

SLC7A9 – Cystinuria, type B																	
5109	SLC7A9	AD/AR	0/1	C.544G>A	p.Ala182Thr	P	PM1s, PP2, PP5vs	660/251.440/2 504/113.736/2	NM_014270.5 rs79389353	F	21-25	4	80 COM, 20 COD	N	Recurrent CO KSD, Osteopenia lumbar spine, Intermittent Hypercalciuria (3.6-8.6), Hyperoxaluria (495-680 umol/d), Normal urine citrate (2.5-3.1), Urine cystine 4 mmol/mol Creatinine, Norm: <30)	Idiopathic NL	Cystinuria risk variant
5323	SLC7A9	AD/AR	0/1	C.544G>A	p.Ala182Thr	P	PM1s, PP2, PP5vs	660/251.440/2 504/113.736/2	NM_014270.5 rs79389353	M	31-35	6	N/A	N	Recurrent KSD, (no stone analysis), Hypersaluria (30g/d), low-low-normal urine Calcium (2.5-2.8), enteric Hyperoxaluria (2200-2360) post-Roux- en-Y Bypass, Low- Normal urine citrate (2.1- 2.15) Urine cystine 5 mmol/mol Creatinine, Norm: <30)	Idiopathic NL	Cystinuria risk variant
5409	SLC7A9	AD/AR	0/1	C.544G>A	p.Ala182Thr	P	PM1s, PP2, PP5vs	660/251.440/2 504/113.736/2	NM_014270.5 rs79389353	F	26-30	5	40 COD, 60 CHPD	N	Recurrent CA-P/CO KSD, prim. & sec. Hyperparathyroidism, Osteoporosis, Hypercalcemia (2.6-2.8, Ca-ion 1.33-1.44), Normal urinary calcium (3.7-4.8), Normal urine oxalate (299-403), normal urinary citrate (5.2) Urine cystine 9 mmol/mol Creatinine, Norm: <30)	Idiopathic NL	Cystinuria risk variant
5211	SLC7A9	AD/AR	het	c.313G>A	p.Gly105Arg	LP	PM1, PP2, PM5supp, PP3m, PP5	96/251.028/1 64/113.436/1	NM_014270.5 rs121908480	F	41-45	4	90 COM, 10 COD	N	CaOx NL Hypercalciuria (5.3) Normal urine oxalate (237) Urine cystine (57 mmol/mol Creatinine) Norm: <30)	Idiopathic NL	Cystinuria risk variant
5517	SLC7A9	AD/AR	het	c.313G>A	p.Gly105Arg	LP	PM1, PP2, PM5supp, PP3m, PP5	96/251.028/1 64/113.436/1	NM_014270.5 rs121908480	M	26-30	2	1) 70 COD, 30 CA 2) 10 COM, 60 COD, 30 CA;	Y	CaOx NL Hypercalciuria (8.6) Normal urine oxalate (297) Hypocitraturia (0.2) Urine cystine (59 mmol/mol Creatinine) Norm: <30)	Idiopathic NL	Cystinuria risk variant

5678	<i>SLC7A9</i>	AD/AR	het	c.749+1G>C	p.?	LP	PVS1s, PM2, PP5	1/251434/0 1/113.738/0	NM_014270.5 rs1060499787	M	41-45	3	80 Brushite, 10 COM, 10 CA	N	Brushite/CaOx NL Hypercalciuria (7.5) Normal urine oxalate (381) Normal urine citrate (4.6) Urine cystine (10 mmol/mol Creatinine)	Idiopathic NL	Cystinuria risk variant
SLC34A1 – Hypophosphatemic nephrolithiasis/osteoporosis-1 (NPHLOP1) / SLC34A1-related kidney stone disease																	
5143	<i>SLC34A1</i>	AR	het	c.398C>T	p.Ala133Val	LP	PS3, PP3m, PP5	936/251.438/2 442/113.726/1	NM_003052.5 rs148976897	F	31-35	3	70 COM, 15 COD, 15 CA	Y	CaOx NL, Osteopenia (lumbar spine & tibia), Normal plasma calcium (total 2.23, ionized 1.21) low plasma phosphate (0.79) Normal PTH (27-42) Normal 1,25-Vit D (101) Hypercalciuria (6.5) Hypocitraturia (1.6) Hyperoxaluria (515-790) Normal urine phosphate (13.3) No glucosuria, normal urine cystine (trace),	recurrent NL	SLC34A1- related kidney stone disease
5167	<i>SLC34A1</i>	AR	het	c.398C>T	p.Ala133Val	LP	PS3, PP3m, PP5	936/251.438/2 442/113.726/1	NM_003052.5 rs148976898	M	16-20	7	80 COM, 20 OCHPD	Y	CaOx NL, Normal BMD, normal plasma phosphate (1.04), low plasma phosphate at lowNa/Ca diet (0.73), increased FE- Phosphate (25%) Normal plasma calcium (total 2.32-2.49, ionized 1.22-1.25) Normal PTH (37-51) Normal 25-Vit D (57) Normal 1,25-Vit D (154- 56) Hypercalciuria (7.8-12.1) Normal urinary citrate (3.25-4.5) Hyperoxaluria (420-750) Normal urine phosphate (25-39.4) No glucosuria, normal urine cystine (trace),	recurrent NL	SLC34A1- related kidney stone disease

5181	<i>SLC34A1</i>	AD/AR	het	c.1130dup	p.Lys378GlnfsTer61	LP	PVS1, PM2s	NF / NF	NM_003052.5	F	26-30	2	60 CA, 20 COD, 20 MAP	Y	CaP/CaOx NL, NC, CKD stage 3 Normal plasma calcium (total 2.46, ionized 1.22) Normal plasma phosphate (1.05) Normal PTH (23) Normal 25-Vit D (64) Normal 1,25-Vit D (61) Hypocitraturia (0.2) High urine oxalate (854) Normal urine phosphate (25.4) No glucosuria, normal urine cystine (4) CaOx NL, Osteopenia, low plasma phosphate (0.52-0.62), Hypokalemia increased FE-Phosphate (20-30%) Normal plasma calcium (total 2.41, ionized 1.18) Normal PTH (33-45) Low 25-Vit D (<12) Normal 1,25-Vit D (89- 100) Normal urinary calcium (3.1-5) Normal urinary citrate (2.3-3.9) Normal urinary oxalate (290-380) Normal urine phosphate (25-39.4) No glucosuria, normal urine cystine (3), CaOx NL, Normal BMD, low-normal plasma phosphate (0.77-1.07) Normal plasma calcium (total 2.2.2.3, ionized 1.15-1.21) Normal PTH (37-43) Normal 25-Vit D (58-68) Normal 1,25-Vit D (91- 122) Normal-high urinary calcium (2.8-6.3)	Idiopathic NL and NC, CKD	SLC34A1- related kidney stone disease
5356	<i>SLC34A1</i>	AR	het	c.398C>T	p.Ala133Val	LP	PS3, PP3m, PP5	936/251.438/2 442/113.726/1	NM_003052.5 rs148976899	M	30-35	3	100 COM; 20 COM, 70 COD, 10 CA	Y	CaOx NL, Osteopenia, low plasma phosphate (0.52-0.62), Hypokalemia increased FE-Phosphate (20-30%) Normal plasma calcium (total 2.41, ionized 1.18) Normal PTH (33-45) Low 25-Vit D (<12) Normal 1,25-Vit D (89- 100) Normal urinary calcium (3.1-5) Normal urinary citrate (2.3-3.9) Normal urinary oxalate (290-380) Normal urine phosphate (25-39.4) No glucosuria, normal urine cystine (3), CaOx NL, Normal BMD, low-normal plasma phosphate (0.77-1.07) Normal plasma calcium (total 2.2.2.3, ionized 1.15-1.21) Normal PTH (37-43) Normal 25-Vit D (58-68) Normal 1,25-Vit D (91- 122) Normal-high urinary calcium (2.8-6.3)	recurrent NL	SLC34A1- related kidney stone disease
5569	<i>SLC34A1</i>	AR	het	c.398C>T	p.Ala133Val	LP	PS3, PP3m, PP5	936/251.438/2 442/113.726/1	NM_003052.5 rs148976900	M	20-25	10	100 CO not diff	Y	CaOx NL, Normal BMD, low-normal plasma phosphate (0.77-1.07) Normal plasma calcium (total 2.2.2.3, ionized 1.15-1.21) Normal PTH (37-43) Normal 25-Vit D (58-68) Normal 1,25-Vit D (91- 122) Normal-high urinary calcium (2.8-6.3)	recurrent NL	SLC34A1- related kidney stone disease

5571	<i>SLC34A1</i>	AR	het	c.398C>T	p.Ala133Val	LP	PS3, PP3m, PP5	936/251.438/2 442/113.726/1	NM_003052.5 rs148976901	M	60-65	2	-	-	Low-normal urinary citrate (1.3-2.6) Normal urinary oxalate (412-560) Normal urine phosphate (15-30) No glucosuria, normal urine cystine (3), Recurrent struvite NL, Normal plasma phosphate (1.06-1.16) Normal plasma calcium (total 2.4, ionized 1.21) Normal PTH (32) Normal 25-Vit D (40-70) Normal 1,25-Vit D (60-70) Low urinary calcium (1.4-2.6) Normal urinary citrate (2.3-3.6) Normal urinary oxalate (308-470) Normal urine phosphate (22-31) No glucosuria, normal urine cystine (8), Brushite NL, NC, CKD stage 2 Normal plasma calcium (total 2.41, ionized 1.24) Normal plasma phosphate (1.05) Normal PTH (42) Normal 25-Vit D (43) Normal 1,25-Vit D (85) Hypercalciuria (8.7) Hypocitraturia (0.5) Normal urine oxalate (180) Normal urine phosphate (38.4) No glucosuria, normal urine cystine (4), incomplete dRTA (NH ₄ CL test)	recurrent NL	SLC34A1-related kidney stone disease
5663	<i>SLC34A1</i>	AD/AR	het	c.244G>T	p.Glu82Ter	P	PVS1, PM2, PP5	17/249.842/0 15/112.652/0	NM_003052.5 rs377186926	M	36-40	1	1): 90 Brushite, 10 CA, 2): 100 Brushite	N	Idiopathic NL and NC, CKD, incomplete dRTA	SLC34A1-related kidney stone disease	
5706	<i>SLC34A1</i>	AR	het	c.398C>T	p.Ala133Val	LP	PS3, PP3m, PP5	936/251.438/2 442/113.726/1	NM_003052.5 rs148976902	M	10-15	1	-	N	radiopaque NL, Normal BMD,	idiopathic NL	SLC34A1-related kidney stone disease

															normal plasma phosphate (1.11) Normal plasma calcium (total 2.37-2.46, ionized 1.19-2.2) Normal PTH (33-57) Low 25-Vit D (<25-35) Normal 1,25-Vit D (77-120) Hypercalciuria (5.4-13) Low-normal urinary citrate (1.3-4.2) Normal urinary oxalate (205-306) Normal urine phosphate (30-37) No glucosuria, normal urine cystine (5), radiopaque NL, CKD Stage II, Normal BMD, normal plasma phosphate (0.93-1.15) Normal plasma calcium (total 2.3-2.35, ionized 1.12-1.15) Normal PTH (32) Normal 25-Vit D (58) Normal 1,25-Vit D (90) Normal-high urinary calcium (3.6-7.2) Low-normal urinary citrate (2.2-3.3) Normal urinary oxalate (116-265) Normal urine phosphate (28-32) No glucosuria, normal urine cystine (3), CaP NL, radiopaque NL, CKD Stage II, Normal BMD, Exclusion dRTA (NH4Cl & F/F-Test)		
5719	<i>SLC34A1</i>	AR	het	c.398C>T	p.Ala133Val	LP	PS3, PP3m, PP5	936/251.438/2442/113.726/1	NM_003052.5 rs148976904	F	21-25	1	-	Y	idiopathic NL	SLC34A1-related kidney stone disease	
5791	<i>SLC34A1</i>	AR	het	c.398C>T	p.Ala133Val	LP	PS3, PP3m, PP5	936/251.438/2442/113.726/1	NM_003052.5 rs148976905	F	31-35	1	60 CA, 40 CHPD	Y	idiopathic NL, no dRTA	SLC34A1-related kidney stone disease	

	SLC9A3R1		het	c.458G>A	p.Arg153Gln	LP	PS3s, PM2, BP6supp	462/251.340/1 381/113.668/8	NM_004252.5 rs41282065										SLC9A3R1- related kidney stone disease	
5810	SLC34A1	AR	het	c.1844del	p.Phe615SerfsTer67	LP	PVS1s, PM2	2/242.762/0 2/111.942/0	NM_003052.5 rs1318616234	M	31-35	3	-	N				NL, Exclusion dRTA (NH4Cl & F/F-Test) Normal plasma phosphate (0.97), Normal plasma calcium (total 2.35, ionized 1.18) Normal PTH (42) Very low 25-Vit D (<25) Normal 1,25-Vit D (59) Low urinary citrate (No glucosuria.	Recurrent NL	SLC34A1- related kidney stone disease
5860	SLC34A1	AR	het	c.398C>T	p.Ala133Val	LP	PS3, PP3m, PP5	936/251.438/2 442/113.726/1	NM_003052.5 rs148976906	F	21-25	1	70 COM, 30 COD	Y				CaOx NL, Exclusion dRTA Normal plasma calcium (total 2.2-2.27, ionized 1.13-1.17) Normal PTH (57) Low 25-Vit D (32-34) Normal 1,25-Vit D (83- 120) Hypercalciuria (7.0-9.2) Normal urinary citrate (4.1-5.1) Normal-high urinary oxalate (214-508) Normal urine phosphate (28-32) No glucosuria, normal urine cystine (3),	idiopathic NL	SLC34A1- related kidney stone disease
5917	SLC34A1	AR	het	c.398C>T	p.Ala133Val	LP	PS3, PP3m, PP5	936/251.438/2 442/113.726/1	NM_003052.5 rs148976907	F	41-45	1	70 COM, 30 COD	N				CaOx NL, low-normal plasma phosphate (0.70- 0.82), Exclusion dRTA (NH4Cl-Test), Normal plasma calcium (total 2.2-2.3, ionized 1.23) Normal PTH (48) Low 25-Vit D (42) Normal 1,25-Vit D (128) Normal urinary calcium (2.5-5.2)	idiopathic NL	SLC34A1- related kidney stone disease

5925	<i>SLC34A1</i>	AR	het	c.398C>T	p.Ala133Val	LP	PS3, PP3m, PP5	936/251.438/2 442/113.726/1	NM_003052.5 rs148976908	M	-	3	20 COD, 40 CA, 40 OCHPD	Y	Low-normal urinary citrate (1.97-3) Normal urinary oxalate (300-330) Normal urine phosphate (14-18) No glucosuria. CaP/Ca-Ox NL, low- normal plasma phosphate (0.61-0.84), Normal plasma calcium (total 2.35-2.4, ionized 1.25) Normal PTH (37.5) Low 25-Vit D (37) Normal 1,25-Vit D (135) Hypercalciuria (8-14) Normal urinary citrate (2.8-4.6) Normal-high urinary oxalate (380-720) high urine phosphate (43- 67) No glucosuria. Low urinary cystine.	Recurrent NL	SLC34A1- related kidney stone disease
SLC34A3 – SLC34A3-related kidney stone disease / hypophosphatemic rickets with hypercalciuria (HHRH)																	
5021	<i>SLC34A3</i>	AR	het	c.496G>A	p.Gly166Ser	LP	PP3s, PM2, PP5	10/249.840/0 6/112.568/0	NM_00117731 6.2 rs200536604	M	31-35	3	N/A	Y	NL (radiopaque stones) Normal plasma calcium (total 2.35, ionized 1.23) Low –normal plasma phosphate (0.77-0.95) Normal PTH (46) Normal 1,25-Vit D (94) Hypercalciuria (8.9) High urine phosphate (34.2) CaOx NL Normal plasma calcium (total 2.48, ionized 1.23) Normal plasma phosphate (1.13) Normal PTH (48) Normal 1,25-Vit D (103) Hypercalciuria (15.5) High urine phosphate (61)	idiopathic NL	SLC34A3- related kidney stone disease
5045	<i>SLC34A3</i>	AR	het	c.496G>A	p.Gly166Ser	LP	PP3s, PM2, PP5	10/249.840/0 6/112.568/0	NM_00117731 6.2 rs200536604	M	26-30	3	100 CaOx	N	NL, NC Normal plasma calcium (total 2.43, ionized 1.25)	idiopathic NL	SLC34A3- related kidney stone disease
5048	<i>SLC34A3</i>	AR	het	c.1055_1058d up	p.Val354ProfsTer240	LP	PVS1, PM2	NF / NF	NM_00117731 6.2 -	M		1	N/A	Y	Normal plasma calcium (total 2.43, ionized 1.25)	NC with medullary sponge	SLC34A3- related kidney stone disease

															Low –plasma phosphate (0.74-1.01) Normal PTH (29) Normal 25-Vit D (71) Normal 1,25-Vit D (71) Normal plasma bicarbonate (28) Hypercalciuria (7.1) Normal urine phosphate (31) Hypocitraturia (1.4) High urine pH (7.5) NL (radiopaque stones) Normal plasma calcium (total 2.53, ionized 1.21) Normal plasma phosphate (0.91-1.15) Normal PTH (47) Normal 1,25-Vit D (142) Normal urine calcium (2.8) Normal urine phosphate (20) CaOx/CaP NL, osteopenia	kidney, incomplete dRTA	
5050	SLC34A3	AR	het	c.1336-25_1336del	p.?	LP	PVS1s, PM2	1/244.272/0 1/107.636/0	NM_00117731 6.2 rs775093177	M	51-55	4	N/A	N	Normal plasma calcium (total 2.54, ionized 1.26) Normal plasma phosphate (0.95) Normal PTH (18) Normal 1,25-Vit D (144) Hypercalciuria (6.3) Normal urine phosphate (20) CaOx/UA NL, gout.	Idiopathic NL	SLC34A3-related kidney stone disease
5070	SLC34A3	AR	het	c.1242C>G	p.Tyr414Ter	LP	PVS1, PM2	NF / NF	NM_00117731 6.2 rs949841477	M	21-25	1	80 COM 20 OCDP	Y	Normal plasma calcium (total 2.47, ionized 1.26) Normal plasma phosphate (1.06-1.08) Normal PTH (16) Normal 1,25-Vit D (148) Hypercalciuria (6.4) High urine phosphate (38) CaOx NL	Idiopathic NL	SLC34A3-related kidney stone disease
5079	SLC34A3	AR	het	c.1336-25_1336del	p.?	LP	PVS1s, PM2	1/244.272/0 1/107.636/0	NM_00117731 6.2 rs775093177	M	41-45	4	1) 80 COD 20 COM 2) 80 UA, 10 COD 10 COM	Y	Normal plasma calcium (total 2.58, ionized 1.29) Normal plasma phosphate (0.81-0.95) Normal PTH (37)	Idiopathic NL	SLC34A3-related kidney stone disease
5102	SLC34A3	AR	het	c.575C>T	p.Ser192Leu	P	PM2, PM5supp, PP3, PP5vs	80/183.402/0 73/75.916/0	NM_00117731 6.2 rs199690076	M	21-25	3	80 COD 10 COM 10 CA	Y		Idiopathic NL	SLC34A3-related kidney stone disease

															High-normal 1,25-Vit D (161) Normal urinary calcium (3-4.3) Normal urine phosphate (23-32) Normal urine citrate (2.6-4.4)		
5164	SLC34A3	AR	het	c.496G>A	p.Gly166Ser	LP	PP3s, PM2, PP5	10/249.840/0 6/112.568/0	NM_00117731 6.2 rs200536604	M	15-20	1	N/A	Y	NL, Normal plasma calcium (total 2.45, ionized 1.24) Normal plasma phosphate (1.11-1.31) Low PTH (13) Normal 1,25-Vit D (132) Hypercalciuria (9.4) High urine phosphate (37) CaOx/CaP NL Normal plasma calcium (total 2.18) Normal plasma phosphate (0.87) Normal PTH (42) Normal 1,25-Vit D (124) Hypercalciuria (8.1) Normal urine phosphate (24) CaOx NL Normal plasma calcium (total 2.42, ionized 1.21) Low-normal plasma phosphate (0.72-0.91) Normal PTH (22) Normal 25-Vit D (68) Normal 1,25-Vit D (141) Hypercalciuria (6.2) Normal urine phosphate (26)	Idiopathic NL	SLC34A3-related kidney stone disease
5183	SLC34A3	AR	het	c.496G>A	p.Gly166Ser	LP	PP3s, PM2, PP5	10/249.840/0 6/112.568/0	NM_00117731 6.2 rs200536604	M	21-25	4	1) 35 COM, 30 COD, 35 CA 2) 10 COM, 85 COD, 5 CA	Y	Normal plasma calcium (total 2.18) Normal plasma phosphate (0.87) Normal PTH (42) Normal 1,25-Vit D (124) Hypercalciuria (8.1) Normal urine phosphate (24) CaOx NL Normal plasma calcium (total 2.42, ionized 1.21) Low-normal plasma phosphate (0.72-0.91) Normal PTH (22) Normal 25-Vit D (68) Normal 1,25-Vit D (141) Hypercalciuria (6.2) Normal urine phosphate (26)	Idiopathic NL	SLC34A3-related kidney stone disease
5312	SLC34A3	AR	het	c.925+20_92 6-48del	p.?	LP	PP5vs, PM2, BP4	43/151532/0 23/67.800/0 (genomes)	NM_00117731 6.2 rs1554784044	F	6-10	4	100 CaOx	N	CaOx NL Normal plasma calcium (total 2.33, ionized 1.22) Low-normal plasma phosphate (0.75-0.89) Normal PTH (31) Low 25-Vit D (29) Normal 1,25-Vit D (131) Hypercalciuria (9.5) Normal urine phosphate (30)	Idiopathic NL	SLC34A3-related kidney stone disease
5363	SLC34A3	AR	het	c.1336- 25_1336del	p.?	LP	PVS1s, PM2	1/244.272/0 1/107.636/0	NM_00117731 6.2 rs775093177	M	26-30	2	60 COD 40 COM	Y	CaOx NL Normal plasma calcium (total 2.33, ionized 1.22) Low-normal plasma phosphate (0.75-0.89) Normal PTH (31) Low 25-Vit D (29) Normal 1,25-Vit D (131) Hypercalciuria (9.5) Normal urine phosphate (30)	Idiopathic NL	stone disease

5455	SLC34A3	AR	het	c.496G>A	p.Gly166Ser	LP	PP3s, PM2, PP5	10/249.840/0 6/112.568/0	NM_00117731 6.2 rs200536604	M	N/A	1	N/A	N	NL (radiopaque stones) Normal plasma calcium (total 2.33, ionized 1.24) Normal plasma phosphate (0.84-1.24) Normal PTH (35) Low 25-Vit D (19) Normal 1,25-Vit D (58) Hypercalciuria (6.1) Normal urine phosphate (25)	Idiopathic NL	SLC34A3- related kidney stone disease
5505	SLC34A3	AR	het	c.304+2T>C	p.?	LP	PVS1s, PM2, PP5	9/250.156/0 8/112.704/0	NM_00117731 6.2 rs201293634	M	16-20	3	80 COD 20 OCDP	N/A	CaOx/CaP NL Normal plasma calcium (total 2.23, ionized 1.17) Normal plasma phosphate (0.77-0.97) Normal PTH (24) Normal 25-Vit D (54) Normal 1,25-Vit D (84) Hypercalciuria (8.4) Normal urine phosphate (31)	Idiopathic NL	SLC34A3- related kidney stone disease
5640	SLC34A3	AR	het	c.1166dup	p.Gln390AlafsTer203	LP	PVS1, PM2	NF / NF	NM_00117731 6.2	F	46-50	2	1) 80 COM 20 COD 2) 60 COM 20 COD 20 CA	N	CaOx NL Normal plasma calcium (total 2.21, ionized 1.17) Normal plasma phosphate (0.82.1.04) Normal PTH (19) Low 25-Vit D (25) Normal 1,25-Vit D (63) Hypercalciuria (13.7) Normal urine phosphate (22)	Idiopathic NL	SLC34A3- related kidney stone disease
5643	SLC34A3	AR	het	c.496G>A	p.Gly166Ser	LP	PP3s, PM2, PP5	10/249.840/0 6/112.568/0	NM_00117731 6.2 rs200536604	M	16-20	3	50 COM 30 COD 20 CA	Y	CaOx/CaP NL Normal plasma calcium (total 2.44, ionized 1.23) Low plasma phosphate (0.72-0.76) Normal PTH (18) Low 25-Vit D (37) Normal 1,25-Vit D (77) Hypercalciuria (13.5) High urine phosphate (45)	Idiopathic NL	SLC34A3- related kidney stone disease
5828	SLC34A3	AR	het	c.133del	p.Trp45GlyfsTer6	LP	PVS1, PM2	NF / NF	NM_00117731 6.2 -	M	26-30	1	90 COD/10 COM	Y	CaOx NL Normal plasma calcium (total 2.39, ionized 1.19) Normal plasma phosphate (0.81-1.09) Normal PTH (45)	Idiopathic NL, dRTA excluded	SLC34A3- related kidney stone disease

															Low 25-Vit D (24) Normal 1,25-Vit D (127) Hypercalciuria (8.8) High urine phosphate (33)			
5948	N K S F	SLC34A3	AR	het	c.496G>A	p.Gly166Ser	LP	PP3s, PM2, PP5	10/249.840/0 6/112.568/0	NM_00117731 6.2 rs200536604	F	N/A	0	N/A	N	No NL Normal plasma calcium (total 2.4, ionized 1.22) Normal plasma phosphate (0.93-1.02) Normal PTH (39) Normal 25-Vit D (67) High 1,25-Vit D (361) Hypercalciuria (8.1) Normal urine phosphate (19) CaOx NL Normal plasma calcium (total 2.51) Normal plasma phosphate (0.85-1.01) Normal PTH (54) Normal 25-Vit D (70) Normal 1,25-Vit D (88) Hypercalciuria (5.3) Normal urine phosphate (31)	NKSF	SLC34A3- related renal phosphate loss
6026		SLC34A3	AR	het	c.1623G>A	p.Trp541Ter	LP	PVS1s, PM2, PP5	3/157.820/0 3/63.926/0	NM_00117731 6.2 rs762610288	M	56-60	5	1) 95 COM 5 COD2) COM 3) COM	N	Idiopathic NL	SLC34A3- related kidney stone disease	
SLC9A3R1 – SLC9A3R1-related kidney stone disease / Hypophosphatemic nephrolithiasis/osteoporosis 2, (NPHLOP2)																		
5006		SLC9A3R1		het	c.458G>A	p.Arg153Gln	LP	PS3s, PM2, BP6supp	462/251.340/1 381/113.668/1	NM_004252.5 rs41282065	F	21-25	4	20 COD, 60 CA, 20 MAP	N	CaP/CaOx NL, CKD G2- 3, Medullary sponge kidneys with multiple calcifications, Normal BMD, Normal plasma calcium (total 2.3, ion: 1.18), Normal plasma phosphate (1.13-1.17) Normal PTH (34-58) Normal 25-Vit D (70) High-normal 1,25-Vit D (160) Hypercalciuria (5.3) Normal urine phosphate (31)	idiopathic NL, medullary sponge kidney	SLC9A3R1- related kidney stone disease
5259		SLC9A3R1		het	c.458G>A	p.Arg153Gln	LP	PS3s, PM2, BP6supp	462/251.340/1 381/113.668/3	NM_004252.5 rs41282065	M	21-25	4	80 COM, 20 COD	Y	CaOx NL, Osteopenia lumbar spine, femur and tibia, Normal plasma calcium (total 2.3-2.41, ion: 1.20)	idiopathic NL	SLC9A3R1- related kidney stone disease

															Normal plasma phosphate (0.95-1.19) Normal PTH (49-61) Normal 1,25-Vit D (85-111) Hypercalciuria (4.9-7.5) Normal urine phosphate (14-32), FE-P: 30% Hyperoxaluria (470-1320) Hypocitraturia (1.0-2.5)		
5294	SLC9A3R1	het	c.458G>A	p.Arg153Gln	LP	PS3s, PM2, BP6supp	462/251.340/1 381/113.668/4	NM_004252.5 rs41282065	M	51-55	3	80 COM, 20 COD; 70 Struvite, 30 CA	N	CaOx/CaP (Struvite,CA) NL , Osteopenia, Normal plasma calcium (total 2.2-2.3, ion: 1.19) Low-normal plasma phosphate (0.89-0.96) Normal PTH (37) Normal 25-Vit D (85) Normal 1,25-Vit D (121) Hypercalciuria (7-7.5) High-normal urine phosphate (28-34), High-normale urinae oxalate (250-550) Hypocitraturia (0.2-2.3)	idiopathic NL	SLC9A3R1-related kidney stone disease	
5325	SLC9A3R1	het	c.458G>A	p.Arg153Gln	LP	PS3s, PM2, BP6supp	462/251.340/1 381/113.668/5	NM_004252.5 rs41282065	M	26-30	4	80 COM, 20 COD; 80 COM, 20 COD	Y	CaOx NL Normal BMD Normal plasma calcium (total 2.2, ion: 1.20), normal plasma phosphate (0.95-1.09) Normal PTH (25-54) Normal 25-Vit D (58-72) Normal 1,25-Vit D (69-108) Normal urinary calcium (1.7-2.6) Normal urine phosphate (18-20), normal urine oxalate (300-350) Low-normal urinary citrate (2.2-3.0)	idiopathic NL	SLC9A3R1-related kidney stone disease	
5500	SLC9A3R1	het	c.458G>A	p.Arg153Gln	LP	PS3s, PM2, BP6supp	462/251.340/1 381/113.668/6	NM_004252.5 rs41282065	M	N/A	0	N/A	N	No NL Normal plasma calcium (total 2.25, ionized 1.18-1.22) Normal plasma phosphate (1.0) Normal PTH (29) Normal 25-Vit D (95)	NKSF	SLC9A3R1-related renal phosphate loss	

**N
K
S
F**

Low-normal 1,25-Vit D (49)
 Hypercalciuria (10.9)
 High urine phosphate (51)

5563	SLC9A3R1	het	c.458G>A	p.Arg153Gln	LP	PS3s, PM2, BP6supp	462/251.340/1 381/113.668/7	NM_004252.5 rs41282065	M	31-35	10	100 COM; 80 COM 20 COD; 70 COM, 30 COD	N	CaOx NL, Normal BMD Normal plasma calcium (total 2.2-2.3, ion: 1.18-1.23), normal plasma phosphate (0.93-1.05) Normal PTH (30-35) Low-Normal 25-Vit D (48) Normal 1,25-Vit D (91-127) Hypercalciuria (6.5-14.5) High urine phosphate (25-57), Hyperoxaluria (700-800) normal urinary citrate (2.3-4.7)	idiopathic NL	SLC9A3R1-related kidney stone disease
------	----------	-----	----------	-------------	----	--------------------------	--------------------------------	---------------------------	---	-------	----	--	---	---	---------------	---------------------------------------

Normal/pathologic values laboratory parameters:

Plasma calcium (mmol/l): 2.15-2.5
 Plasma magnesium (mmol/l): 0.66-1.07
 Plasma phosphate (mmol/l): 0.81-1.45
 PTH (pg/ml): 15-65
 25-Vit D (nmol/l): 50-135
 1,25-Vit D (pmol/l): 48-190

Hypercalciuria (mmol/24h): >5
 Hyperoxaluria (μmol/24h): >500
 Hypocitraturia (mmol/24h): <1.65
 Urine magnesium (mmol/24h): 3-5
 Urine phosphate (mmol/24h): 13-32