

Pervasive Influence of Hormonal Contraceptives on the Human Plasma Proteome in a Broad Population Study

Nikola Dordevic^{1, †}, Clemens Dierks^{2, †}, Essi Hantikainen¹, Vadim Farztdinov³, Fatma Amari³, Vinicius Verri Hernandez^{1, §}, Alessandro De Grandi¹, Francisco S. Domingues¹, Michael Mülleder³, Peter Paul Pramstaller^{1, 4}, Johannes Rainer^{1, *}, Markus Ralser^{2, 5, 6}

¹ Institute for Biomedicine, Eurac Research, 39100 Bolzano, Italy

² Institute of Biochemistry, Charité Universitätsmedizin Berlin, 10117 Berlin, Germany

³ Core Facility – High Throughput Mass Spectrometry, Charité Universitätsmedizin Berlin, 10117 Berlin, Germany

⁴ Department of Neurology, General Central Hospital, 39100 Bolzano, Italy

⁵ Max Planck Institute for Molecular Genetics, 14195 Berlin, Germany

⁶ The Wellcome Centre for Human Genetics, Nuffield Department of Medicine, University of Oxford, Oxford OX3 7BN, UK

[†] These authors contributed equally

[§] Current affiliation: Department of Food Chemistry and Toxicology, University of Vienna, Vienna, Austria

* Correspondence: johannes.rainer@eurac.edu

Lead contact: johannes.rainer@eurac.edu

Abstract

Background: Plasma proteomics offers new avenues to explore non-genetic associations, such as biomarkers for lifestyle and environmental exposure in population studies. To date, most proteomic investigations in population studies have utilized affinity-reagent based technologies, which are ideal to quantify the low abundant fraction of the circulating proteome but may omit several of the abundant proteins that function in plasma.

Methods: Utilizing high throughput mass spectrometry, we quantified 148 highly abundant protein groups including immunoglobulins, coagulation factors, metabolic proteins, and components of the innate immune system, in the plasma of 3,632 participants from the Cooperative Health Research in South Tyrol (CHRIS) study. Using multiple regression analyses we then investigated associations with various factors including common medications.

Results: Beyond age and sex, the high abundant plasma proteome is predominantly influenced by hormonal contraceptives. For instance, Angiotensinogen (AGT) levels exhibit significant alteration with this treatment, suggesting that AGT levels could be a potential biomarker for contraceptive use. The effect of this drug class is more pronounced than other common medications or covariates. Furthermore, our analysis does not reveal any enduring signature associated with the use of these contraceptives.

Conclusion: In contrast to most used drugs, hormonal contraceptives exert a pronounced effect on the high abundant plasma proteome. Given its high prevalence among young female participants, the impact of hormonal contraceptives might be misconstrued as sex- or age-related effects on the plasma proteome. One should thus account for their use in any epidemiological or clinical plasma proteome study to prevent misleading results.

Introduction

Human blood represents an easily obtainable and sensitive matrix for the assessment of health and disease in individuals or populations. The abundance of proteins, their respective isoforms, potential post-translational modifications and protein sequence variants provide a snapshot of the current physiological state of the circulatory system and all organs with which blood comes into contact (Anderson and Anderson, 2002; Deutsch et al., 2021; Ignjatovic et al., 2019; Vernardis et al., 2023). In population studies, large-scale plasma proteomics provides new opportunities to study non-genetic associations to health-related traits, such as markers for lifestyle and environmental exposure or to detect and characterize onset and progression of disease through longitudinal monitoring of protein abundance changes (Feringstad et al., 2021; Palstrøm et al., 2022; Suhre et al., 2021; Sun et al., 2023). While statistical approaches ranging from multivariate linear statistics to traditional machine learning have proven successful in identifying biomarkers and utilizing them for disease prediction (Bader et al., 2020; Demichev et al., 2021), large study cohorts would enable the application of more powerful deep learning models (Bader et al., 2023). The quantification of the plasma proteome is a formidable challenge due to a combination of factors: the exceptionally high abundance of select plasma proteins, the wide dynamic range of protein concentrations, the substantial sequence variability of certain proteins, and the fluctuations in protein abundances in response to diseases, physiological changes, or lifestyle factors. This challenge is particularly pronounced in large-scale studies, where it becomes even more daunting due to the heightened technical complexities involved (Deutsch et al., 2021; Suhre et al., 2021).

Recently, different technologies emerged to measure proteins in human blood plasma or serum samples. These range from optimized single-protein assays to more flexible mass-spectrometry (MS) based workflows to affinity-based multiplex assays. For instance, highly multiplexed affinity-based platforms, such as Luminex, Olink and SomaScan, have emerged that offer attractive and fast high throughput assays for measurement of plasma protein panels in thousands of samples (Feringstad et al., 2021; Smith and Gerszten, 2017; Suhre et al., 2021). While throughput and sensitivity are high for these methods, their susceptibility to off-target binding as well as the lack of reproducibility raised questions about the quality of some affinity-based measures (Baker, 2015). Moreover, due to saturation of the affinity reagents, and the difficulty to differentiate among isoforms, many affinity-reagent based methods omit many highly abundant plasma proteins. Specifically, the high abundant plasma protein fraction is however enriched for proteins that exert their function in the plasma, which is responsible for nutrient transport, responds to lifestyle intervention and immune system activity. Indeed, the high abundant plasma proteome fraction is attractive for the development of marker panel assays for medical research and clinical use and encompasses most of the protein biomarkers used to date (Anderson and Anderson, 2002; Hartl et al., 2023; Macklin et al., 2020; Vernardis et al., 2023).

Mass spectrometry has a high specificity in protein identification and is not limited to the detection of a predefined group of proteins. Furthermore, it allows the detection of post-translational modifications or even interactions (Deutsch et al., 2021). MS-based proteomics increasingly allows the absolute quantification of plasma proteins and provides a simple path for the development of biomarker assays (Hartl et al., 2023; Macklin et al., 2020). While mass spectrometry per se is highly sensitive and can detect individual peptides down to zeptomoles, it struggles to detect low abundant plasma proteins due to the high dynamic range in the plasma proteome. MS methods can be made applicable for the analysis of the low abundant plasma proteome fraction, in particular, upon depletion of the high abundant fraction of

the plasma proteome (Reymond et al., 2023; Tu et al., 2010). However, protein depletion adds variability and cost, and similar to the use of affinity reagents, compromises the quantification of the important high-abundant plasma fraction. With the goal to complement the existing proteomic studies with quantities about the high abundant plasma protein fraction, we recently presented a platform technology that combines a semi-automated sample preparation workflow, analytical flow rate chromatography for gradient lengths of 0.5-5 minutes, specifically optimized DIA-MS acquisition schemes, and an adapted data processing software suite which integrates artificial neural networks in raw data processing (DIA-NN) (Demichev et al., 2020; Messner et al., 2020; Szyrwił et al., 2023). This platform achieves high measurement precision, and due to the high sample throughput as provided by the analytical flow rate chromatography, is highly cost effective in the processing of large plasma proteomes.

The Cooperative Health Research in South Tyrol (CHRIS) study (Pattaro et al., 2015) is a single-site population-based study aimed to investigate the genetic and molecular basis of common age-related chronic conditions and their interaction with lifestyle and the environment. In recent work, we have been evaluating the impact of age, sex and diet, amongst others, on the human metabolome (Verri Hernandez et al., 2022). Moreover, gene-metabolite associations (König et al., 2022), as well as genetic and metabolomic determinants of disease (Emmert et al., 2021), have been investigated. Using Scanning SWATH (Messner et al., 2021) acquisition on Triple TOF 6600 Instruments (Sciex) we created a MS-based plasma proteomics data set with low technical variability for $n = 3,632$ CHRIS participants. We performed a general exploratory analysis of the data set to identify relevant factors affecting the plasma proteome, including commonly used drugs. We found hormonal contraceptives to be the main factor explaining the variation in a human plasma proteome in this European cohort.

Results

Study Sample Characteristics and General Data Overview

To quantify high abundant plasma proteins in 3,632 participants of the CHRIS study (Pattaro et al., 2015) (demographics shown in Table 1), citrate plasma samples were randomly arrayed on 50 96-well plates assigning nuclear families to the same plate. Each plate included 79 study samples, 4 replicates of the study pool, 1 procedural blank, 4 commercial serum and 8 commercial EDTA plasma samples. These serve as quality control (QC) and reference samples to compare, cross-reference and join large studies (Dammer et al., 2023; Pino et al., 2018). Measurements were performed on tryptic digests that have been created from the plasma citrate samples. These were analyzed utilizing high-flowrate liquid chromatography data independent acquisition mass spectrometry (LC-DIA-MS). Specifically, we used Scanning SWATH (Messner et al., 2021) acquisition, using 800 μ L/min, 5-minute water to acetonitrile chromatographic gradients, as described in the Materials and Methods section (Messner et al., 2021).

The full set of 5,125 unique samples, included thus 977 quality control (QC) samples, 200 pools of study samples and 350 samples from a sub-study of CHRIS (Motta et al., 2019). This sample set was measured in 17 batches over the time span of 6 months on two Triple TOF 6600 instruments (Sciex) that were

connected to 1290 Infinity II chromatography systems (Agilent technologies). Data was recorded using Analyst (Sciex) and processed in DIA-NN using a spectral library approach (Methods).

The data matrix consisted, after removal of 55 outliers and all QC samples of abundances for 6,762 peptide precursors in 4,093 samples. Peptide features with more than 40% missing values across all study samples were excluded, reducing thus the data set to a final number of 2,716 precursors. Cyclic loess normalization and plate correction were then applied to remove batch effects between plates as well as any other measurement-specific technical variation. Final summarization of peptides to protein abundances was performed after proteotypic filtering of the peptides to a final number of 2,386. In this final dataset, the quantitative precision is estimated with a median coefficient of variation (CV) to 15.45% and 30.97% for pooled and study samples (see Supplementary Figure S149 for distribution of CV before and after normalization). The set of quantified proteins along with the results from the present analysis are available in Supplementary Table S1. The final data set used for this analysis consisted, after removal of samples from pregnant women and participants with missing information for any of the traits listed in Table 1, of 148 proteins in 3,472 study samples.

While for most of the proteins the signal distribution across samples was about log-normal, some proteins, including AGT, SERPING1, IGHV5-10-1 and IGHV6-1, showed a clear bimodal signal distribution in the present data set (see Supplementary Figures S1-S148 for signal distributions of all proteins).

Table 1: Demographic characteristics of the study participants included in the analysis.

	Female	Male
<i>n</i>	1,939	1,533
Age [mean (SD)]	45.9 (16.5)	46.2 (16.6)
Not fasting, <i>n</i> (%)	118 (6.1%)	97 (6.3%)
Classification according to BMI, <i>n</i> (%)		
1: underweight	41 (2.1%)	7 (0.6%)
2: normal	1091 (56.3%)	593 (38.7%)
3: overweight	518 (26.7%)	687 (44.8%)
4: obese	289 (14.9%)	246 (16.0%)

Protein Coverage and Variation in the CHRIS Cohort

Of the consistently measured high abundant proteins, 139 were enriched in the following GO:BP pathways: complement cascade pathways (complement activation; complement activation, classical pathway), immune response pathways (humoral immune response; immunoglobulin mediated immune response; B cell mediated immunity; adaptive immune response; innate immune response among others); phagocytosis, blood coagulation, hemostasis, endocytosis, response to bacterium and many others (see Supplementary Table S2). For a more detailed investigation of protein functionality, we in addition used the PANTHER classification system (Mi et al., 2013). Of the 148 plasma proteins consistently quantified, 134 could be assigned to 25 different functional classes. The most prominent were immunoglobulins ($n =$

27), protease inhibitors (22), serine proteases (13), components of the complement system (10) and apolipoproteins (9) (see Supplementary Table S2).

We next evaluated the variation of these proteins across our population study. The median coefficient of variation (CV) of all proteins across study samples was 31.1% with the 25% and 75% quantile being 21.5% and 47.3%, respectively (CV for all proteins included in Supplementary Table S1). Among the proteins with the lowest CV were, next to albumin (ALB; 13.3%), also proteins related to blood coagulation (F2, SERPINC1, KNG1 and SERPINF2; CV between 13% and 18.3%) as well as many proteins from the complement system (C3, C5, CFH, CFB, C1S, C8A, CFI and C1R, with a CV between 13.8% and 19.9%; see also Supplementary Table S3), reflecting that most of the individuals reported no acute condition at the time of sampling. To identify highly variable proteins, we calculated a relative CV defined as the ratio between the CVs in study and pooled QC samples. Among the top 30 proteins ranked by their relative CV were 12 immunoglobulins (IGHG4, IGHM, IGHV6-1, IGHV5-10-1, IGHA2, IGHG2, IGLV8-61, JCHAIN, IGHA1, IGHV2-26, IGKC and IGKV1-5, with a CV between 22% and 89.2%), 4 hemolysis-related proteins (HP, HPR, CP and HBB, with a CV between 26.9% and 54.5%) as well as the hormone transporters SERPINA6 (48.3%) and SHBG (123%; see Supplementary Table S4 for the full list). Of 46 common disease biomarker proteins detected previously using Scanning SWATH on neat plasma (Messner et al., 2020), 31 were also quantified in the present data set (Supplementary Table S5). Of these, 9, including ALB (13.3%), SERPINC1 (13.7%) and HPX (13.8%) had a CV in study samples below 20% while 10 had a CV larger than 40%, with the highest variable proteins being LPA (134%), SHBG (123%) and FN1 (CV = 88%).

Next, we compared quantified protein abundances to related available accredited laboratory measurements that either determine the enzymatic activity of the respective proteins or quantify protein complexes containing them (such as HDL and LDL). Correlation coefficients (Spearman's rho) for the investigated pairs of measurements range from 0.32 for albumin to 0.79 for APOB and LDL (Supplementary Table S6 and Supplementary Figure S150). Hence, while generally significant correlations between protein abundance and the diagnostic assays was achieved, this comparison equally indicates that the protein quantification by mass spectrometry, and the indirect quantification of the parameters by enzyme assays or estimation of protein complexes levels, produces varying quantitative results.

Oral Hormonal Contraceptives Shape the Plasma Proteome in Female Study Participants

To explore the data set and to investigate main influence factors on the present plasma proteome, we next performed a principal component analysis (PCA) on the z-score transformed abundances. This analysis revealed a subset of almost exclusively female individuals that separated from the main bulk of study participants on principal component 1 (PC1; see Figure 1, upper panel). This principal component, explaining the largest variance in the data set, also showed a clear relationship with the participants' age (Figure 1, lower panel; the loading for age in the PCA was also approximately parallel to the direction of PC1) and, to a lower extent, with the participants' sex.

By integrating phenotypic and medication data from the study participants, we found the subset of individuals separating on PC1 to be best characterized by a medication related to systemic oral hormonal

To identify the plasma proteome associated to hormonal contraceptives we next fitted multiple linear regression models to the proteomics data with explanatory variables for age, (categorical) BMI, (binary) fasting status and (binary) oral hormonal contraceptive use (HCU). To avoid any unwanted influence of age or sex on the results, we performed this analysis on the data subset of female participants below the age of 40 (n = 729, with 275 participants using hormonal contraceptives). As significance criteria we required for categorical variables, in addition to a statistical significance level, also the observed average difference in abundances to be larger than the CV of the respective protein determined on study specific quality control samples measured in the same data set. With this setting, we identified 50 plasma proteins that were significantly associated with the use of hormonal contraceptives, where the strongest association, and largest effect size, was found for AGT (angiotensinogen) (see Table 2). We further assessed the predictive power of AGT for HCU based on a sex, age, BMI, and fasting status-matched control group (n = 275) for the 275 female participants taking hormonal contraceptives. The AUROC (Area Under Receiver Operating Characteristic curve) for AGT was 89% confirming its high predictive ability (Figure 2B).

Table 2: Proteins significantly associated with hormonal contraceptive use in females with age <= 40 years. Columns coef, p_{adj} and ES contain the abundance difference (in log2 scale), the p-value adjusted for multiple hypothesis testing and the effect size, respectively. Proteins are ordered by p-value.

UniProt	Gene	coef	p_{adj}	ES
P01019	AGT	1.35	2.77e-95	1.38
P00450	CP	0.552	1.14e-72	1.3
Q96PD5	PGLYRP2	-0.624	5.39e-61	-1.19
P08185	SERPINA6	0.822	5.43e-60	1.16
P04278	SHBG	1.69	2.93e-59	1.16
Q9UGM5	FETUB	1.22	6.38e-51	1.12
P00747	PLG	0.286	1.14e-48	1.11
P02774;P02774-3	GC	0.29	5.84e-46	1.06
P01009	SERPINA1	0.344	2.83e-44	1.04
P01042;P01042-2	KNG1	0.253	1.31e-42	1.05
P01008	SERPINC1	-0.22	8.8e-38	-0.967
P51884	LUM	-0.428	1.4e-36	-0.979
P05543	SERPINA6	0.509	2.13e-36	0.96
P01043-2	KNG1	0.421	5.36e-35	0.961
P05546	SERPIND1	0.375	6.38e-35	0.954
P04196	HRG	-0.435	2.8e-34	-0.907
O14791;O14791-2;O14791-3	APOL1	0.457	7.87e-29	0.875
P13671	C6	-0.308	1.47e-27	-0.868
P04004	VTN	0.216	2.49e-25	0.777
P07225	PROS1	-0.27	3.94e-25	-0.823
P20851;P20851-2	C4BPB	-0.405	4.8e-25	-0.825
P02763	ORM1	-0.374	4.94e-25	-0.783
P05155;P05155-3	SERPING1	-0.864	3.67e-24	-0.825

P02753	RBP4	0.27	6.76e-24	0.815
P20742	PZP	0.707	4.54e-21	0.76
P04003	C4BPA	-0.227	3.49e-20	-0.731
P19652	ORM2	-0.333	1.67e-19	-0.731
P80108	GPLD1	0.341	2.21e-19	0.74
P05452	CLEC3B	-0.244	6.23e-19	-0.72
Q06033;Q06033-2	ITIH3	-0.423	1e-18	-0.724
P02768	ALB	-0.134	1.82e-16	-0.686
P02656	APOC3	0.281	3.86e-16	0.685
P07357	C8A	-0.208	1.04e-14	-0.657
Q16610;Q16610-4	ECM1	-0.327	1.5e-14	-0.651
P02748	C9	-0.231	2.58e-14	-0.638
P06727	APOA4	-0.284	1.45e-13	-0.619
P01024	C3	0.12	3.54e-13	0.572
P00748	F12	0.287	2.28e-12	0.594
P02652	APOA2	0.139	7.23e-12	0.594
P02747	C1QC	-0.204	1.4e-11	-0.584
P27169	PON1	0.272	1.55e-11	0.59
P02746	C1QB	-0.191	9.25e-10	-0.543
P04217;P04217-2	A1BG	0.152	3.92e-09	0.534
P00739	HPR	0.285	5.77e-07	0.47
P02787	TF	0.11	1.78e-06	0.444
O43866	CD5L	-0.261	0.00037	-0.377
A0A075B6I0	IGLV8-61	-0.272	0.00519	-0.329
P01023	A2M	-0.104	0.0171	-0.287
P00738	HP	-0.17	0.0455	-0.28
P01871	IGHM	-0.196	0.047	-0.289

Similarly, we observed a clear and strong difference in abundance of AGT between females taking oral contraceptives and all other female as well as male participants when considering the overall study population (see Figure 2). This large difference also explained the observed bimodal signal distribution for this protein mentioned above.

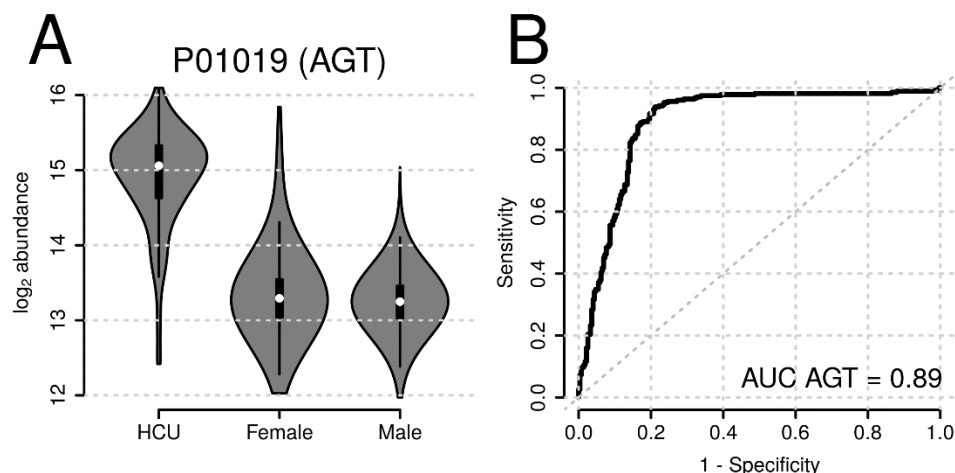


Figure 2: Abundance of the protein angiotensinogen (AGT) in study participants taking hormonal contraceptives (HCU) and female and male participants that don't (A). ROC (Receiver Operating Characteristics) curve demonstrating the high predictive power of ACT for hormonal contraceptive usage (B).

Recently, a long-lasting effect of menopausal hormonal therapy (MHT) in the circulating proteome was reported (Thomas et al., 2022). To test whether also hormonal contraceptives would have a similar impact on the high abundant plasma proteome, we categorized female participants below 40 years of age into 3 groups: current use of hormonal contraceptives ($n = 275$), previous use of contraceptives ($n = 280$), and never used hormonal contraceptives ($n = 76$) and identified proteins with significant differences in abundances between these. Restricting the analysis to young females ensured balanced groups and reduced a potential influence of age and menopause on the results. In contrast to current use of hormonal contraceptives, not a single protein had significantly different concentrations between women with previous HCU and women that never took contraceptives (Supplementary Figure S152). Thus, in the present data set we could not observe any long-term effects of hormonal contraceptives on the plasma proteome.

Plasma Proteome Associations to Age, Sex, BMI

To identify associations of proteins with age, sex, and body mass index (BMI) we next fitted multiple regression models to the abundances of each quantified plasma protein adjusting in addition for participants' fasting status, and usage of oral hormonal contraceptives (the full results are provided in Supplementary Table S1).

With this analysis we identified 22 plasma proteins significantly differing between female and male participants (Supplementary Table S7; Figure 3A), with the top five candidates being the proteins RBP4, GPLD1, SERPINF1, and TTR showing lower, and CP higher abundance in females, respectively. Ninety-one proteins were found to be significantly related to the participants' age (Supplementary Table S8; Figure 3B), with the proteins IGFALS and VTN having the strongest effects, showing decreasing abundances with

higher age (see Supplementary Figures S153 and S154). We observed multiple proteins that had significantly different concentrations when comparing participants of BMI category 1 (underweight; BMI < 18.5; $n = 48$), BMI category 3 (overweight; $25 \leq \text{BMI} < 30$; $n = 1,205$), BMI category 4 (obese; BMI ≥ 30 ; $n = 535$) to participants from BMI category 2 (normal; $18.5 \leq \text{BMI} < 25$; $n = 1,684$). In total we observed 4 significantly associated proteins for underweight, 4 proteins for overweight and 20 proteins for obese status (Supplementary Tables S9, S10 and S11). Most of the BMI-associated proteins showed a difference in concentrations which was consistently increasing (or decreasing) with BMI (Figure 3C), such as SHBG and APOD having lower abundances with increasing BMI. Also, one protein, APOA4, was significantly associated with fasting status showing a 9% higher abundance in non-fasting participants (Supplementary Table S12).

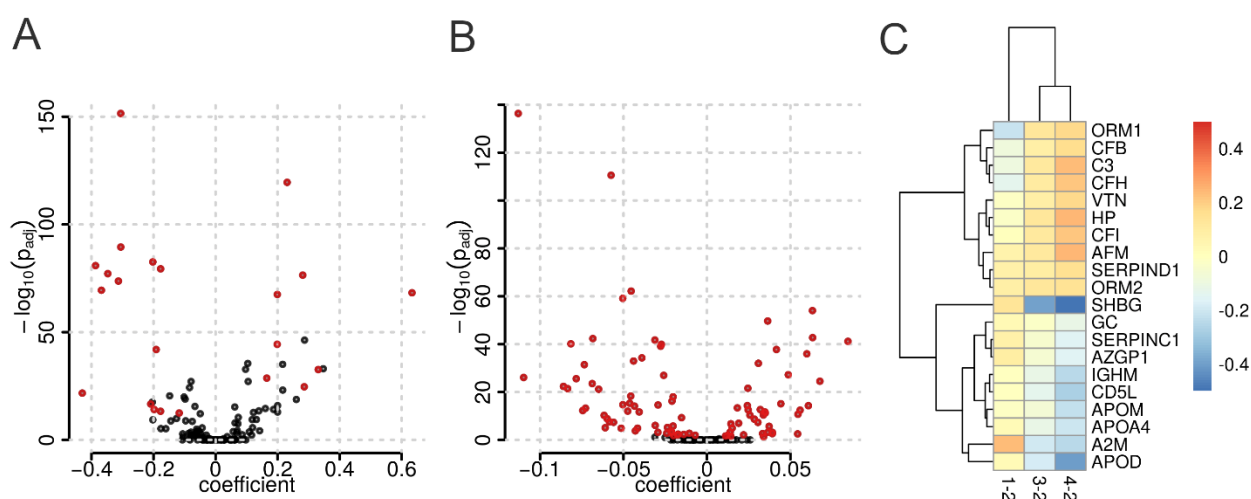


Figure 3: Sex-, age- and BMI-associated plasma proteins in the CHRIS study. A) Sex-associations of high abundant plasma proteins (Volcano plot). The coefficient represents the \log_2 difference in average concentrations between female and male participants. B) Age-dependency of high abundant plasma proteins (Volcano plot). The coefficient represents the \log_2 -change in abundance over 10 years. Significant proteins are highlighted in red. C) Coefficients for proteins found to be significantly associated with at least one BMI category (Heatmap). The coefficients represent the \log_2 -difference in average abundances between underweight, overweight, and obese (BMI categories 1, 3, and 4 respectively) compared to the reference normal weight (BMI category 2).

Off note, the results for HCU associations from this analysis were similar to the results from the analysis on the subset of female participants yielding almost identical coefficients and ranks of p-values and their effect sizes were larger than those for sex or age associated proteins (see Supplementary Figure S155).

Given the large impact of HCU on the plasma proteome, we evaluated to what extent adjustment for HCU influences the results of a general analysis for age, sex and BMI-associations. We thus conducted a sensitivity analysis by fitting the same linear models to the data omitting only the explanatory variable for HCU and compared the results of the two models. Indeed, 8 from the 28 sex- and 15 from the 101 age-associated proteins identified in this sensitivity analysis were significantly related to HCU but not to sex

or age in the full analysis model (see Supplementary Tables S13 and S14 for coefficients and p-values for these proteins in both analyses). In contrast, BMI-associations were not affected. Thus, the adjustment for HCU had a clear impact on the age and sex-association results while it did not affect the BMI-associations (see Figure 4).

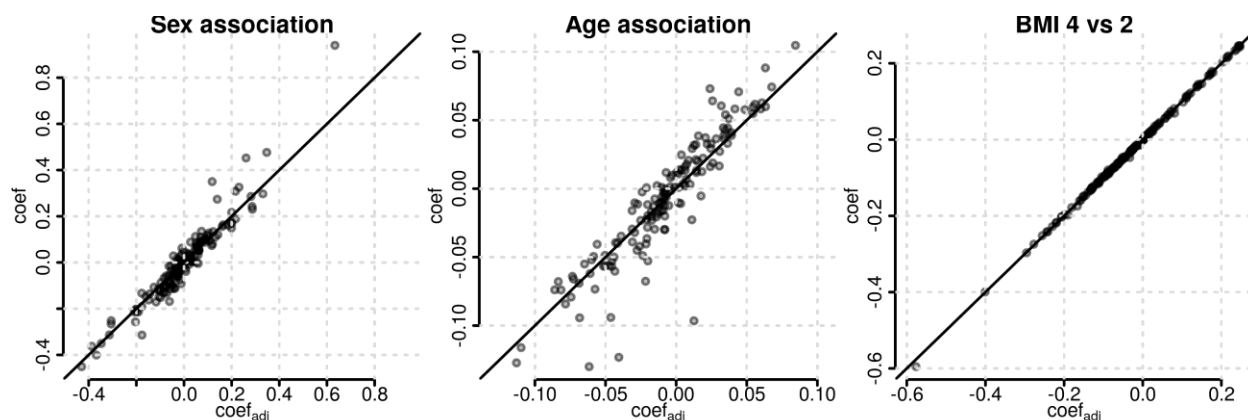


Figure 4: Sensitivity analysis for sex, age, and BMI-associations of plasma proteins. Shown are the coefficients from the linear model adjusting for hormonal contraceptive use (x-axis) against the coefficients from a linear model without that adjustment (y-axis). The solid black line represents the identity line.

Influence of Medication on Quantified Plasma Proteins

To evaluate whether also other medications influence the abundances of plasma proteins, we next determined the most common medications in the present data set and evaluated their impact on the high abundant plasma proteome. To identify associations between plasma proteins and therapeutical subgroups of general medication, we first identified all ATC level 3 medications taken by at least 15 participants (0.4% of the sample set) on a regular basis (at least two times per week) and defined a binary variable for each of them. These were then included as explanatory variables into the per-protein multiple regression models, that accounted also for age, sex, (categorical) BMI and (binary) fasting status of each study participant. The tested medications along with the number of participants as well as significant protein associations are shown in Table 3.

Table 3: Overview of association results for ATC level 3 medications in the CHRIS study subset. Only medications taken on a regular basis by more than 14 of the in total 3,632 participants were considered. Columns *Participants* and *Proteins* list the number of participants taking the medication and number of significantly associated proteins.

ATC	Name	Participants	Proteins
G03A	HORMONAL CONTRACEPTIVES FOR SYSTEMIC USE	286	50
H03A	THYROID PREPARATIONS	262	0
B01A	ANTITHROMBOTIC AGENTS	243	2
C10A	LIPID MODIFYING AGENTS, PLAIN	203	1
C09A	ACE INHIBITORS, PLAIN	156	0
C07A	BETA BLOCKING AGENTS	149	1
N06A	ANTIDEPRESSANTS	141	0
C09D	ANGIOTENSIN II ANTAGONISTS, COMBINATIONS	113	1
A02B	DRUGS FOR PEPTIC ULCER AND GASTRO-OESOPHAGEAL REFLUX DISEASE (GORD)	94	0
C08C	SELECTIVE CALCIUM CHANNEL BLOCKERS WITH MAINLY VASCULAR EFFECTS	91	0
C09C	ANGIOTENSIN II ANTAGONISTS, PLAIN	74	1
A12A	CALCIUM	65	2
C09B	ACE INHIBITORS, COMBINATIONS	59	0
A10B	BLOOD GLUCOSE LOWERING DRUGS, EXCL. INSULINS	57	4
M01A	ANTIINFLAMMATORY AND ANTIRHEUMATIC PRODUCTS, NON-STEROIDS	48	3
G02B	CONTRACEPTIVES FOR TOPICAL USE	46	19
G04C	DRUGS USED IN BENIGN PROSTATIC HYPERTROPHY	46	4
M04A	ANTIGOUT PREPARATIONS	36	2
N03A	ANTIEPILEPTICS	34	1
N05C	HYPNOTICS AND SEDATIVES	32	0
S01E	ANTIGLAUCOMA PREPARATIONS AND MIOTICS	30	0
R03A	ADRENERGICS, INHALANTS	29	1
N05B	ANXIOLYTICS	24	0
N05A	ANTIPSYCHOTICS	21	0
G03F	PROGESTOGENS AND ESTROGENS IN COMBINATION	18	0
G03H	ANTIANDROGENS	16	38
N04B	DOPAMINERGIC AGENTS	16	1

Among the 27 tested ATC3 medications, most frequent were hormonal contraceptives for systemic use (ATC3 G03A), thyroid preparations (ATC3 H03A), antithrombotic agents (ATC3 B01A) and lipid modifying agents (ATC3 C10A), each with more than 200 participants taking these on a regular basis. In line with results from the previous sections, medications related to contraception (ATC3 G03A, G03H and G02B) yielded by far the highest number of significantly associated plasma proteins (50, 38 and 19, respectively, see Table 3). For these medications we observe a considerable overlap of the protein signatures as well as similar effect sizes (see Figure 5). Even contraceptives for topical use (ATC3 G02B), which was not

considered in the definition of the oral hormonal contraceptive use (HCU) variable in the previous section, showed, despite smaller effect sizes, a similar protein signature. For the remaining medications, no or only few significant protein associations were found (see Table 3). Tables with significant proteins for each medication are provided in the supplement (Supplementary Tables S15-S30).

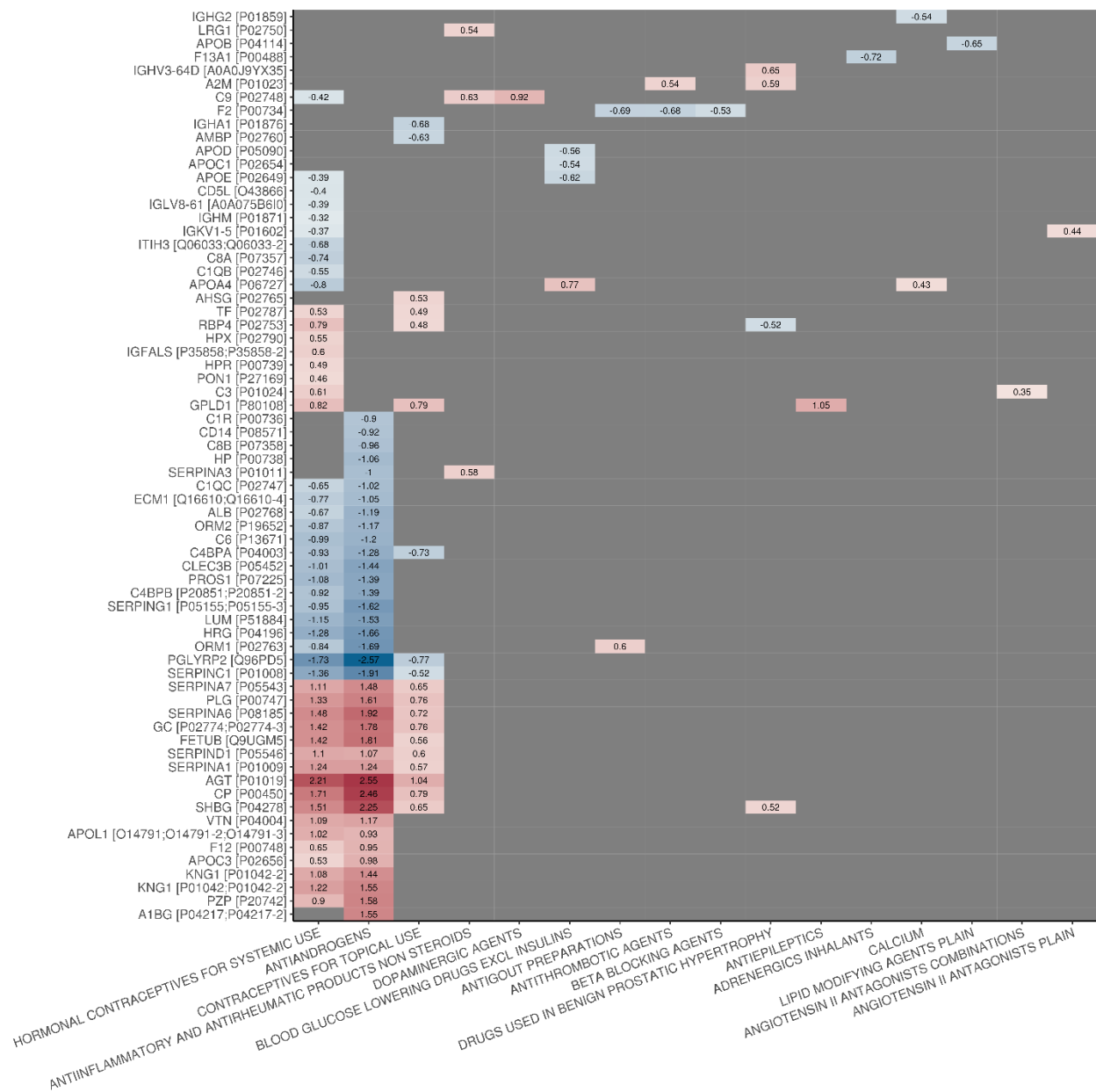


Figure 5: Significant associations between proteins (rows) and ATC level 3 medications (columns). Effect sizes (as a number and color coded) are only shown for significant associations.

We next repeated the analysis on ATC level 4 medications to eventually identify additional associations with the more specific chemical or pharmacological subgroups defined by this ATC level. Also in this analysis, medications related to hormonal contraceptives yielded the highest number of significant protein associations: 52, 38, 36 and 35 for progestogens and estrogens, fixed combinations (ATC4 G03AA), antiandrogens and estrogens (ATC4 G03HB), progestogens and estrogens, sequential preparations (ATC4 G03AB) and intravaginal contraceptives (ATC4 G02BB), respectively (see Table S31). Further, the signatures and effect sizes were highly similar for these medications, irrespective of the route of administration (Supplementary Figure S156): intravaginal contraceptives had a similar signature and effect sizes than all other, orally administered, hormonal contraceptives. In contrast, no significant protein was found for the ATC4 medication intrauterine contraceptives (ATC4 G02BA), which is part of the same ATC level 3 medication subgroup (ATC3 G02B, contraceptives for topical use) as intravaginal contraceptives (ATC4 G02BB). The medication subgroup with the next most significant proteins (14) was vitamin K antagonists (ATC4 B01AA), while for platelet aggregation inhibitors excl. heparin (ATC4 B01AC, part of the same ATC3 therapeutic subgroup antithrombotic agents) only a single significant association was found. For the remaining medications, only few significant proteins were identified, and no significant association was detected for 13 of the in total 29 tested medication subgroups (see Supplementary Tables S32-S44 for significant proteins for the tested medications).

Thus, summarizing, hormonal contraceptives had, among all tested medications, by far the strongest influence on the quantified plasma proteome in this study.

Discussion

In this study, we explored the high abundant plasma proteome fraction of 3,632 CHRIS study participants using proteomics. Using a combination of semi-automated sample preparation of neat plasma, fast analytical flow-rate chromatography, and Scanning SWATH (Messner et al., 2021), we recorded the proteomes for over 5,125 plasma samples (including QCs). Using an HPLC setup with two binary pump systems, one gradient and one wash/equilibration pump, reduced overheads to 1.8 min and eventually allowed one operator to run 3 LC-MS batches (3x 96-well plates each) per week and to complete the measurements within 4 weeks of instrument time. We obtained precise quantities and limited batch effects, demonstrating that mass spectrometry-based proteomics suits the quantification of the high abundant plasma proteomic fraction in large-scale epidemiological cohorts. Applying strict filtering criteria, we report a set of 148 reliably measured proteins considering all study samples. We would like to note that in other applications of our plasma proteomic platform a higher proteomic depth was achieved, albeit in lower sample numbers (Demichev et al., 2021; Vernardis et al., 2023). We speculate that the sample matrix or a confounding technical factor (like plastic materials), have affected tryptic digestion and hence proteomics depths achieved in the present data set. However, the quantitative precision of the obtained data was high, thus allowing us to test for associations between the high abundant plasma proteome and epidemiological parameters.

Many of the high abundant plasma proteins identified were either members of the complement system and innate immunity, coagulation factors, or immunoglobulins, and thus representing processes with high disease relevance. Indeed, a considerable number of these proteins varied significantly across individuals

and at least 31 of them are linked to disease biomarkers, reflecting the high importance of the upper plasma protein fraction for biomarker discovery.

A general comparison of quantified protein abundances with typical laboratory tests yielded an overall significance concordance, considering that the assays test for different parameters. While the proteomics platform assesses protein abundance projecting to the average proteoform, the diagnostic tests either test for total protein, enzyme activity or assess protein complexes like LDL or HDL. Given these constraints, the related tests yielded significant correlations. For instance, the correlation coefficients were high for some proteins (0.78 between APOB and HDL, 0.68 for transferrin) while APOA1 levels correlated to a somewhat lower degree with the LDL, of which APOA1 is a component (0.41).

Our plasma proteome reflected both known and new associations with epidemiological parameters. For instance, when comparing to literature, 12 from the 22 sex associated proteins identified in our study, have been described using other methods. Reassuringly, for most, these show the same directionality of the effect (Cho et al., 2006; Ding et al., 2012; Gaya da Costa et al., 2018; Hammond, 2011; Lehallier et al., 2019; Lin et al., 2013; Lyutvinskiy et al., 2013; Miike et al., 2010), whereas for GPLD1 an opposite effect was reported (Lehallier et al., 2019) (see Supplementary Table S45). Nine proteins which showed a sex association in our dataset (TTR, AZGP1, HBA1, LRG1, APOA4 IGHA1, CD5L, APOD) have not been identified as sex dependent in previous studies, to the best of our knowledge. Our dataset revealed 91 age-associated protein abundances. Of these, 63 have been previously associated with ageing in the literature (Cominetti et al., 2018; Larsson et al., 2020; Lehallier et al., 2019; Orwoll et al., 2020; Siino et al., 2022; Tanaka et al., 2020; M. Xu et al., 2020; R. Xu et al., 2020). About 80% of these (n = 50) showed a similar pattern of regulation in our study. Of the remaining 29 proteins, 28 were previously reported to have no statistically significant correlation with age (Siino et al., 2022; Tanaka et al., 2020; R. Xu et al., 2020). However, despite the lack of statistical significance in previous studies, 75% of these showed a similar trend in fold change as observed in our study (see Supplementary Table S45). Regarding BMI, we identified 20 proteins with significant differences in concentration between the various BMI categories and the reference level. Among these, 15 have been previously reported for BMI, with same directionality, based on plasma proteomes from large population studies such as KORA, INTERVAL, and QMDiab (Goudswaard et al., 2021; Zaghlool et al., 2021). Finally, a lower overlap with results from literature was found for proteins that were significantly associated with hormonal contraceptive use in our data (22 out of 50) (Josse et al., 2012; Ramsey et al., 2016). In proteomics, comparisons with results from literature generally suffer from a low overlap and coverage of measured proteins due to the different employed platforms (various MS-based protocols, different affinity proteomics approaches) resulting in gaps and missing reference values. This was particularly the case with Enroth et al. (Enroth et al., 2018), where the intersection of analytes was limited to a single commonly measured protein, thus precluding an extensive confrontation of results. Arguably, differences in study sizes as well as employed statistical tests and significance cut-offs will impact comparisons with literature. Taken together, the overall acceptable coefficient of variation of the data set together with the correlation of protein abundances with estimates from independent laboratory tests on the same blood samples and the agreement of results from the investigated traits with previous results from literature suggest the present MS-based plasma proteome data set to be of high quality and proves its utility to identify biologically and clinically interesting signals.

In our data set, hormonal contraceptives explained most of the variance of the quantified plasma proteome. Indeed, an impact of oral contraceptives, and to a lower extent also of the menstrual cycle, on plasma protein and metabolite abundances has also been reported previously (Klipping et al., 2021;

Ramsey et al., 2016), yet, the use of hormonal contraceptives is not yet systematically accounted for in the typical epidemiological studies. In the liver, oral contraceptives stimulate the synthesis of steroid-binding globulins, such as sex hormone-binding globulin (SHBG), thereby affecting circulating, free steroid levels and they further increase low-grade inflammation, alter lipid metabolism and affect the coagulation system, resulting in an increased risk for thromboembolic events (Kangasniemi et al., 2023). We were able to independently validate these findings using our extensive dataset, which identifies a substantial number of plasma proteins that are significantly impacted by the use of oral hormonal contraceptives. In addition to oral contraceptives, also (hormonal) intravaginal contraceptives resulted in an almost identical protein signature with highly similar effect sizes. The effect of hormonal contraceptives on the plasma proteome is thus independent of the route of administration. Also, compared to the other analyzed traits (age, sex, BMI), the numbers of significant proteins and related effect sizes were much larger for hormonal contraceptive use. Notably, levels in angiotensinogen (AGT), the most discriminatory protein, separated users and non-users of hormonal contraceptives, and might serve as a biomarker of contraceptive use. Indeed, exogenous estrogens have been reported to cause upregulation of hepatic angiotensinogen (Elger et al., 2017; Gordon et al., 1992) associated with an activation of the renin angiotensin system with however little renal and systemic consequences (Cherney et al., 2007; Kang et al., 2001). A sensitivity analysis unequivocally underscored the necessity of incorporating hormonal contraceptive use into the analytical models, in order to prevent proteins influenced by this treatment from being erroneously linked to factors such as age, sex, or correlated phenotypes. Recently, a long-term effect of menopausal hormonal therapy on the circulating plasma proteome was described (Thomas et al., 2022). We, however, could not identify any such effect for hormonal contraceptives on the high abundant plasma proteome, possibly, due to differences in hormone composition and dosage between the two medications. In addition, the intersection of quantified proteins in both studies is very small (22 proteins) and, except for SERPINA3, none of the proteins from the reported signature was detected in our data set. Thus, hormonal contraceptives represent a large influence factor on plasma protein concentrations and should be considered, in addition to clinical practice as suggested by Ramsey et al. (Ramsey et al., 2016), in any study involving plasma proteomics data sets, particularly if the analyzed trait might be related to either age or sex. For example, hormonal contraceptive use should be accounted for in an association analysis for cardiovascular health in the present data set to avoid confounded results.

In contrast to hormonal contraceptives, the majority of the commonly used medications among the participants in the CHRIS study were those prescribed for the management of cardiometabolic conditions. None of these drugs had a similarly strong influence on plasma protein levels but affected specific pathways. The disparity in concentration observed for these medications was notably less pronounced than that seen with hormonal contraceptives. For instance, lipid-modifying agents were found to influence APOB levels, and it was this specific protein that exhibited a statistically significant association with the medication in our study.

To conclude, we assessed the potential of the high abundant fraction of the plasma proteome in an epidemiological study, the CHRIS cohort. We identified associations between protein abundances and common factors such as sex and age, but notably, report that hormonal contraceptives had the largest effect on the plasma proteome. Due to its high prevalence, and apparently strong influence, this type of medication should be accounted for in any epidemiological or clinical study of the plasma proteome to avoid spurious findings. Moreover, future studies should clarify to which degree desired and undesired effects resulting from the use of contraceptives are associated with the changes in the plasma proteome.

Material and Methods

Study cohort

Details on the CHRIS study including recruitment are given in (Pattaro et al., 2015). In brief, study participants were recruited from the adult population of the middle and upper Vinschgau/Val Venosta district located in the mountainous northern-most region of Italy. Next to collection and subsequent biobanking of blood and urine samples a self-reported, questionnaire-based health assessment was performed. Medication information was collected by scanning the barcode of the medication boxes study participants brought along and assignment of the respective Anatomical Therapeutic Chemical (ATC) codes. Standard blood parameters were measured in blood samples at the Hospital of Merano using standardized clinical assays. Details on measurements of clinical laboratory parameters for the present study set including the description of sample handling are described in (Noce et al., 2017). In brief, antithrombin was measured in plasma citrate samples using the enzymatic Siemens Innovance Antithrombin assay on a ROCHE SYSMEX CA1500 and for a subset of participants using the STA-Stachrom AT III assay on a STAGO STA COMPACT MAX instrument. Albumin, HDL, LDL, Triglycerides and transferrin were measured in serum samples using the colorimetric Cobas ALB plus Albumin BCG assay, the enzymatic Cobas HDL-C Plus 3 generation assay, the enzymatic Cobas LDL-C plus 2nd generation assay, the Cobas Triglyceride GPO-PAP assay and the immunological Cobas Tina-quant Transferrin ver.2 assay, respectively, on a ROCHE MODULAR PPE and for a subset of samples using the colorimetric ALBUMIN BCG assay, the ULTRA HDL assay, the DIRECT LDL assay, the TRIGLYCERIDE assay and the immunological TRANSFERRIN assay, respectively, on an ABBOT DIAGNOSTIC ARCHITECT. Hemoglobin (HGB) was measured in EDTA plasma using the electronic impedance laser light scattering based assay on an ABBOT CD SAPPHIRE instrument and on a subset of samples on a SYSMEX XN-1000.

From the in total 13,393 participants of the CHRIS study 3,632, participating to the study between August 2011 and August 2014, were selected for mass spectrometry-based quantification of their plasma proteome.

Sample Preparation

In this study, a total of 5,125 samples were subjected to measurement. Among these, 479 samples were quality control samples, 498 were plasma set samples and 200 were pooled study samples that were utilized to monitor measurement quality and control technical variation. The measurement comprised of 3,948 study samples including 350 samples from a CHRIS sub-study, which were, however, excluded from the present data analysis. These plasma citrate samples were randomly distributed across 50 96-well

plates, together with 4 study pools, 4 commercial serum (ZenBio SER-SPL) samples, and 8 plasma samples (ZenBio HSER-P500ML) per plate. Measurements were performed in 17 batches, each consisting of 3 plates (except for MS batch 17), over a span of 6 months.

Semi-automated in-solution digestion was performed as previously described for high throughput clinical proteomics (Messner et al., 2020). All stocks and stock plates were prepared in advance to reduce variability and were stored at -80°C until use. Briefly, 5 μl of thawed samples were transferred to the denaturation and reduction solution (50 μl 8 M Urea, 100 mM ammonium bicarbonate (ABC), 5 μl 50 mM dithiothreitol per well) mixed and incubated at 30°C for 60 minutes. Five microliters were then transferred from the iodoacetamide stock solution plate (100 mM) to the sample plate and incubated in the dark at RT for 30 minutes before dilution with 100 mM ABC buffer (340 μl). 220 μl of this solution was transferred to the pre-made trypsin stock solution plate (12.5 μl , 0.1 $\mu\text{g}/\mu\text{l}$) and incubated at 37°C for 17 h (Benchmark Scientific Incu-Mixer MP4). The digestion was quenched by addition of formic acid (10% v/v, 25 μl) and cleaned using C18 solid phase extraction in 96-well plates (BioPureSPE Macro 96-Well, 100 mg PROTO C18, The Nest Group). The eluent was dried under vacuum and reconstituted in 60 μl 0.1% formic acid. Insoluble particles were removed by centrifugation and the samples transferred to a new plate.

Liquid Chromatography and Mass Spectrometry

The digested peptides were separated on a 5-min high-flow chromatographic gradient and recorded by mass spectrometry using Scanning SWATH (Messner et al., 2021) on an Agilent Infinity II HPLC combined with a SCIEX 6600 TripleTOF platform. Five micrograms of sample were injected onto a reverse phase HPLC column (Luna[®]Omega 1.6 μm C18 100A, 30 \times 2.1 mm, Phenomenex) and resolved by gradient elution at a flow rate of 800 $\mu\text{l}/\text{min}$ and column temperature of 30°C . All solvents were of LC-MS grade. The fast separation used 0.1% formic acid in water (Solvent A) and 0.1% formic acid in acetonitrile (Solvent B) using an alternating column regeneration system where the gradient separation of one sample is performed on one LC column by a gradient pump while a second identical column is being washed and equilibrated using a regeneration pump. The gradient separation, wash and equilibration programs are described in Supplementary Table S46. For mass spectrometry analysis, the scanning SWATH precursor isolation window was 10 m/z, the bin size was set to 20% of the window size, the cycle time was 0.52 s, the precursor range was set to 400 – 900 m/z, the fragment range to 100 – 1500 m/z as previously described in Messner et al. (Messner et al., 2021). A Sciex IonDrive TurboV source was used with ion source gas 1 (nebulizer gas), ion source gas 2 (heater gas) and curtain gas set to 50 psi, 40 psi and 25 psi, respectively. The source temperature and ion spray voltage were set to 450°C and 5500 V, respectively.

Data Processing and Statistical Data Analysis

Raw MS data was processed using DIA-NN v1.8 (Demichev et al., 2020). Although DIA-NN can optimize mass accuracies and the scan window size, we fixed them to ensure the reproducibility of our results (MS1: 12 ppm; MS2: 20 ppm; scan window size: 6). An external, publicly available spectral library was used

for all measurements (Bruderer et al., 2019). The spectral library was annotated using the Human UniProt (UniProt Consortium, 2008) isoform sequence database (Proteome ID: 3AUP000005640).

All preprocessing steps of the DIA-NN output matrix were performed in the R programming language (v4.0.4). All libraries used were in compatible versions to the R version used. Imputation of missing values was performed using the `knn` function implemented in the `impute` package, with $k = 9$ nearest neighbors applied to samples within each MS batch. Data were normalized using cyclic loess (with the ‘fast’ option) (Ballman et al., 2004; Bolstad et al., 2003) and plate effects were corrected using the `removeBatchEffect` function from the `limma` Bioconductor package (Ritchie et al., 2015). To map peptide precursors to proteins, precursor filtering (retaining only proteotypic precursors) and median polish summarization were applied, as implemented in the `preprocessCore` Bioconductor package. Functional analysis was performed with `gProfiler` package (Kolberg et al., 2020). Only GO Terms with an FDR-corrected p -value > 0.05 were considered significant. Protein class information was obtained from the PANTHER Classification System (Mi et al., 2013). The results of the functional annotations are summarized in Supplementary Table S2. To assess the predictive ability of AGT, a control group was defined using the `MatchIt` package with an “optimal” matching strategy and calculation of propensity scores by a generalized linear model. ROC curves were calculated by using the `pROC` package.

To compute the CV for each protein or peptic precursor, the empirical standard deviation (the square root of the variance) was divided by the empirical mean (the average abundance), and the result was expressed as a percentage. For PCA analysis, protein abundances were scaled to zero mean and standard deviation of one (autoscaling or z-score transformation). To identify associations with sex, age, BMI, fasting status, and hormonal contraceptive use, linear regression models were fitted separately for each protein using its concentration as response variable and sex, age, fasting status, BMI and hormonal contraceptive use as covariates. For easier interpretation of relative effects, participants’ age is divided by 10, thus age-related coefficients and effect sizes are related to 10 years of difference (Steyerberg, 2019). For BMI, clinical categories were used (WHO Consultation on Obesity (1999: Geneva and Organization, 2000): underweight (category 1, $BMI < 18.5$), normal range (category 2, $18.5 \leq BMI < 25$), overweight (category 3, $25 \leq BMI < 30$) and obese (category 4, $BMI > 30$). For fasting status, a binary variable based on the self-reported fasting information from the questionnaire was used (1 for participants declaring to have had a meal within the 12 hours prior blood drawing and 0 for all others). Medication information was recorded by scanning the medication boxes participants were asked to bring along to the visit at the study site and Anatomical Therapeutic Chemical (ATC) codes of the medications were extracted. A binary variable for oral hormonal contraceptives was defined using ATC level 3 categories “HORMONAL CONTRACEPTIVES FOR SYSTEMIC USE” (ATC3 G03A) and “ANTIANDROGENS” (ATC3 G03H). To evaluate influence on common medication on plasma protein levels, age, sex, BMI and fasting status-adjusted linear models were fitted including in addition explanatory variables for ATC3 or ATC4 medications taken on a regular basis by at least 15 participants. P -values from linear models were adjusted for multiple testing using the Bonferroni method. Proteins with an adjusted p -value smaller than 0.05 were considered statistically significant. In addition, for categorical variables (such as sex, age, BMI, or medications), to call a protein significant, its absolute difference in concentration for the variable had to be larger than its CV across the sample pools. The observed difference in concentrations is thus required to be larger than the technical variability that was observed for that protein in the present data set (calculated on the QC CHRIS Pool samples).

Categorization of female participants into groups “current HCU”, “previous HCU” and “never used any hormonal contraceptives” was based on self-reported questionnaire data combined with the definition of hormonal contraceptive use described above. Females with missing or ambiguous information were excluded from the analysis. To identify proteins with significant differences in abundances between these categories, linear models were fitted to the data adjusting in addition for age, BMI, and fasting status.

Additionally, linear regression models were fitted to protein concentrations standardized to mean of 0 and standard deviation of 1. Coefficients from this analysis, where differences in one unit are equal to a standard deviation of 1, are comparable and reported as “effect size”. All analyses were performed on log₂-transformed protein concentrations.

Data analysis was performed in R (version 4.2.2), R markdown documents defining and describing the analysis are available on github (https://github.com/EuracBiomedicalResearch/chris_plasma_proteome).

Data Availability Statement

CHRIS study data can be requested for research purposes by submitting a dedicated request to the CHRIS Access Committee. Please contact access.request.biomedicine@eurac.edu for more information on the process.

References

- Anderson NL, Anderson NG. 2002. The human plasma proteome: history, character, and diagnostic prospects. *Mol Cell Proteomics* **1**:845–867. doi:10.1074/mcp.r200007-mcp200
- Bader JM, Albrecht V, Mann M. 2023. MS-Based Proteomics of Body Fluids: The End of the Beginning. *Mol Cell Proteomics* **22**:100577. doi:10.1016/j.mcpro.2023.100577
- Bader JM, Geyer PE, Müller JB, Strauss MT, Koch M, Leypoldt F, Koertvelyessy P, Bittner D, Schipke CG, Incesoy EI, Peters O, Deigendesch N, Simons M, Jensen MK, Zetterberg H, Mann M. 2020. Proteome profiling in cerebrospinal fluid reveals novel biomarkers of Alzheimer’s disease. *Mol Syst Biol* **16**:e9356. doi:10.15252/msb.20199356
- Baker M. 2015. Reproducibility crisis: Blame it on the antibodies. *Nature* **521**:274–276. doi:10.1038/521274a
- Ballman KV, Grill DE, Oberg AL, Therneau TM. 2004. Faster cyclic loess: normalizing RNA arrays via linear models. *Bioinformatics* **20**:2778–2786. doi:10.1093/bioinformatics/bth327
- Bolstad BM, Irizarry RA, Astrand M, Speed TP. 2003. A comparison of normalization methods for high density oligonucleotide array data based on variance and bias. *Bioinformatics* **19**:185–193.
- Bruderer R, Muntel J, Müller S, Bernhardt OM, Gandhi T, Cominetti O, Macron C, Carayol J, Rinner O, Astrup A, Saris WHM, Hager J, Valsesia A, Dayon L, Reiter L. 2019. Analysis of 1508 Plasma

- Samples by Capillary-Flow Data-Independent Acquisition Profiles Proteomics of Weight Loss and Maintenance. *Mol Cell Proteomics* **18**:1242–1254. doi:10.1074/mcp.RA118.001288
- Cherney DZI, Scholey JW, Cattran DC, Kang AK, Zimpelmann J, Kennedy C, Lai V, Burns KD, Miller JA. 2007. The effect of oral contraceptives on the nitric oxide system and renal function. *Am J Physiol Renal Physiol* **293**:F1539–1544. doi:10.1152/ajprenal.00351.2007
- Cho YM, Youn B-S, Lee H, Lee N, Min S-S, Kwak SH, Lee HK, Park KS. 2006. Plasma retinol-binding protein-4 concentrations are elevated in human subjects with impaired glucose tolerance and type 2 diabetes. *Diabetes Care* **29**:2457–2461. doi:10.2337/dc06-0360
- Cominetti O, Núñez Galindo A, Corthésy J, Valsesia A, Irincheeva I, Kussmann M, Saris WHM, Astrup A, McPherson R, Harper M-E, Dent R, Hager J, Dayon L. 2018. Obesity shows preserved plasma proteome in large independent clinical cohorts. *Sci Rep* **8**:16981. doi:10.1038/s41598-018-35321-7
- Dammer EB, Seyfried NT, Johnson ECB. 2023. Batch Correction and Harmonization of -Omics Datasets with a Tunable Median Polish of Ratio. *Front Syst Biol* **3**:1092341. doi:10.3389/fsysb.2023.1092341
- Demichev V, Messner CB, Vernardis SI, Lilley KS, Ralser M. 2020. DIA-NN: neural networks and interference correction enable deep proteome coverage in high throughput. *Nat Methods* **17**:41–44. doi:10.1038/s41592-019-0638-x
- Demichev V, Tober-Lau P, Lemke O, Nazarenko T, Thibeault C, Whitwell H, Röhl A, Freiwald A, Szyrwiell L, Ludwig D, Correia-Melo C, Aulakh SK, Helbig ET, Stubbemann P, Lippert LJ, Grüning N-M, Blyuss O, Vernardis S, White M, Messner CB, Joannidis M, Sonnweber T, Klein SJ, Pizzini A, Wohlfarter Y, Sahanic S, Hilbe R, Schaefer B, Wagner S, Mittermaier M, Machleidt F, Garcia C, Ruwwe-Glösenkamp C, Lingscheid T, Bosquillon de Jarcy L, Stegemann MS, Pfeiffer M, Jürgens L, Denker S, Zickler D, Enghard P, Zelezniak A, Campbell A, Hayward C, Porteous DJ, Marioni RE, Uhrig A, Müller-Redetzky H, Zoller H, Löffler-Ragg J, Keller MA, Tancevski I, Timms JF, Zaikin A, Hippenstiel S, Ramharter M, Witzernath M, Suttorp N, Lilley K, Müllleder M, Sander LE, PA-COVID-19 Study group, Ralser M, Kurth F. 2021. A time-resolved proteomic and prognostic map of COVID-19. *Cell Syst* **12**:780–794.e7. doi:10.1016/j.cels.2021.05.005
- Deutsch EW, Omenn GS, Sun Z, Maes M, Pernemalm M, Palaniappan KK, Letunica N, Vandenbrouck Y, Brun V, Tao S-C, Yu X, Geyer PE, Ignjatovic V, Moritz RL, Schwenk JM. 2021. Advances and Utility of the Human Plasma Proteome. *J Proteome Res* **20**:5241–5263. doi:10.1021/acs.jproteome.1c00657
- Ding J, Berryman DE, Jara A, Kopchick JJ. 2012. Age- and sex-associated plasma proteomic changes in growth hormone receptor gene-disrupted mice. *J Gerontol A Biol Sci Med Sci* **67**:830–840. doi:10.1093/gerona/glr212
- Elger W, Wyrwa R, Ahmed G, Meece F, Nair HB, Santhamma B, Killeen Z, Schneider B, Meister R, Schubert H, Nickisch K. 2017. Estradiol prodrugs (EP) for efficient oral estrogen treatment and abolished effects on estrogen modulated liver functions. *J Steroid Biochem Mol Biol* **165**:305–311. doi:10.1016/j.jsbmb.2016.07.008
- Emmert DB, Vukovic V, Dordevic N, Weichenberger CX, Losi C, D’Elia Y, Volpato C, Hernandez VV, Gögele M, Foco L, Pontali G, Mascalzoni D, Domingues FS, Paulmichl R, Pramstaller PP, Pattaro C, Rossini A, Rainer J, Fuchsberger C, De Bortoli M. 2021. Genetic and Metabolic Determinants of Atrial Fibrillation in a General Population Sample: The CHRIS Study. *Biomolecules* **11**:1663. doi:10.3390/biom11111663
- Enroth S, Maturi V, Berggrund M, Enroth SB, Moustakas A, Johansson Å, Gyllensten U. 2018. Systemic and specific effects of antihypertensive and lipid-lowering medication on plasma protein biomarkers for cardiovascular diseases. *Sci Rep* **8**:5531. doi:10.1038/s41598-018-23860-y

- Ferkingstad E, Sulem P, Atlason BA, Sveinbjornsson G, Magnusson MI, Styrismisdottir EL, Gunnarsdottir K, Helgason A, Oddsson A, Halldorsson BV, Jensson BO, Zink F, Halldorsson GH, Masson G, Arnadottir GA, Katrinardottir H, Juliusson K, Magnusson MK, Magnusson OT, Fridriksdottir R, Saevarsdottir S, Gudjonsson SA, Stacey SN, Rognvaldsson S, Eiriksdottir T, Olafsdottir TA, Steinthorsdottir V, Tragante V, Ulfarsson MO, Stefansson H, Jonsdottir I, Holm H, Rafnar T, Melsted P, Saemundsdottir J, Norddahl GL, Lund SH, Gudbjartsson DF, Thorsteinsdottir U, Stefansson K. 2021. Large-scale integration of the plasma proteome with genetics and disease. *Nat Genet* **53**:1712–1721. doi:10.1038/s41588-021-00978-w
- Gaya da Costa M, Poppelaars F, van Kooten C, Mollnes TE, Tedesco F, Würzner R, Trouw LA, Truedsson L, Daha MR, Roos A, Seelen MA. 2018. Age and Sex-Associated Changes of Complement Activity and Complement Levels in a Healthy Caucasian Population. *Front Immunol* **9**:2664. doi:10.3389/fimmu.2018.02664
- Gordon MS, Chin WW, Shupnik MA. 1992. Regulation of angiotensinogen gene expression by estrogen. *J Hypertens* **10**:361–366. doi:10.1097/00004872-199204000-00007
- Goudswaard LJ, Bell JA, Hughes DA, Corbin LJ, Walter K, Davey Smith G, Soranzo N, Danesh J, Di Angelantonio E, Ouwehand WH, Watkins NA, Roberts DJ, Butterworth AS, Hers I, Timpson NJ. 2021. Effects of adiposity on the human plasma proteome: observational and Mendelian randomisation estimates. *Int J Obes (Lond)* **45**:2221–2229. doi:10.1038/s41366-021-00896-1
- Hammond GL. 2011. Diverse roles for sex hormone-binding globulin in reproduction. *Biol Reprod* **85**:431–441. doi:10.1095/biolreprod.111.092593
- Hartl J, Kurth F, Kappert K, Horst D, Mülleler M, Hartmann G, Ralser M. 2023. Quantitative protein biomarker panels: a path to improved clinical practice through proteomics. *EMBO Mol Med* **15**:e16061. doi:10.15252/emmm.202216061
- Ignjatovic V, Geyer PE, Palaniappan KK, Chaaban JE, Omenn GS, Baker MS, Deutsch EW, Schwenk JM. 2019. Mass Spectrometry-Based Plasma Proteomics: Considerations from Sample Collection to Achieving Translational Data. *J Proteome Res* acs.jproteome.9b00503. doi:10.1021/acs.jproteome.9b00503
- Josse AR, Garcia-Bailo B, Fischer K, El-Sohehy A. 2012. Novel effects of hormonal contraceptive use on the plasma proteome. *PLoS One* **7**:e45162. doi:10.1371/journal.pone.0045162
- Kang AK, Duncan JA, Cattran DC, Floras JS, Lai V, Scholey JW, Miller JA. 2001. Effect of oral contraceptives on the renin angiotensin system and renal function. *Am J Physiol Regul Integr Comp Physiol* **280**:R807-813. doi:10.1152/ajpregu.2001.280.3.R807
- Kangasniemi MH, Arffman RK, Joenväärä S, Haverinen A, Luiro K, Tohmola T, Renkonen R, Heikinheimo O, Tapanainen JS, Piltonen TT. 2023. Ethinylestradiol in combined hormonal contraceptive has a broader effect on serum proteome compared with estradiol valerate: a randomized controlled trial. *Hum Reprod* **38**:89–102. doi:10.1093/humrep/deac250
- Klipping C, Duijkers I, Mawet M, Maillard C, Bastidas A, Jost M, Foidart J-M. 2021. Endocrine and metabolic effects of an oral contraceptive containing estetrol and drospirenone. *Contraception* **103**:213–221. doi:10.1016/j.contraception.2021.01.001
- Kolberg L, Raudvere U, Kuzmin I, Vilo J, Peterson H. 2020. gprofiler2 -- an R package for gene list functional enrichment analysis and namespace conversion toolset g:Profiler. *F1000Res* **9**:ELIXIR-709. doi:10.12688/f1000research.24956.2
- König E, Rainer J, Hernandez VV, Paglia G, Del Greco M. F, Bottigliengo D, Yin X, Chan LS, Teumer A, Pramstaller PP, Locke AE, Fuchsberger C. 2022. Whole Exome Sequencing Enhanced Imputation Identifies 85 Metabolite Associations in the Alpine CHRIS Cohort. *Metabolites* **12**:604. doi:10.3390/metabo12070604
- Larsson C, Ehinger A, Winslow S, Leandersson K, Klintman M, Dahl L, Vallon-Christersson J, Häkkinen J, Hegardt C, Manjer J, Saal L, Rydén L, Malmberg M, Borg Å, Loman N. 2020. Prognostic

- implications of the expression levels of different immunoglobulin heavy chain-encoding RNAs in early breast cancer. *NPJ Breast Cancer* **6**:28. doi:10.1038/s41523-020-0170-2
- Lehallier B, Gate D, Schaum N, Nanasi T, Lee SE, Yousef H, Moran Losada P, Berdnik D, Keller A, Verghese J, Sathyan S, Franceschi C, Milman S, Barzilai N, Wyss-Coray T. 2019. Undulating changes in human plasma proteome profiles across the lifespan. *Nat Med* **25**:1843–1850. doi:10.1038/s41591-019-0673-2
- Lin C-J, Chu NF, Hung Y-J, Chang J-B, He C-T, Hsiao F-C, Hsieh C-H. 2013. The association of retinol-binding protein 4 with metabolic syndrome and obesity in adolescents: the effects of gender and sex hormones. *Clin Pediatr (Phila)* **52**:16–23. doi:10.1177/0009922812459948
- Lytvinskiy Y, Yang H, Rutishauser D, Zubarev RA. 2013. In silico instrumental response correction improves precision of label-free proteomics and accuracy of proteomics-based predictive models. *Mol Cell Proteomics* **12**:2324–2331. doi:10.1074/mcp.O112.023804
- Macklin A, Khan S, Kislinger T. 2020. Recent advances in mass spectrometry based clinical proteomics: applications to cancer research. *Clin Proteomics* **17**:17. doi:10.1186/s12014-020-09283-w
- Messner CB, Demichev V, Bloomfield N, Yu JSL, White M, Kreidl M, Egger A-S, Freiwald A, Ivosev G, Wasim F, Zelezniak A, Jürgens L, Suttorp N, Sander LE, Kurth F, Lilley KS, Mülleder M, Tate S, Ralser M. 2021. Ultra-fast proteomics with Scanning SWATH. *Nat Biotechnol* **39**:846–854. doi:10.1038/s41587-021-00860-4
- Messner CB, Demichev V, Wendisch D, Michalick L, White M, Freiwald A, Textoris-Taube K, Vernardis SI, Egger A-S, Kreidl M, Ludwig D, Kilian C, Agostini F, Zelezniak A, Thibeault C, Pfeiffer M, Hippenstiel S, Hocke A, von Kalle C, Campbell A, Hayward C, Porteous DJ, Marioni RE, Langenberg C, Lilley KS, Kuebler WM, Mülleder M, Drosten C, Suttorp N, Witzenrath M, Kurth F, Sander LE, Ralser M. 2020. Ultra-High-Throughput Clinical Proteomics Reveals Classifiers of COVID-19 Infection. *Cell Syst* **11**:11–24.e4. doi:10.1016/j.cels.2020.05.012
- Mi H, Muruganujan A, Casagrande JT, Thomas PD. 2013. Large-scale gene function analysis with the PANTHER classification system. *Nat Protoc* **8**:1551–1566. doi:10.1038/nprot.2013.092
- Miike K, Aoki M, Yamashita R, Takegawa Y, Saya H, Miike T, Yamamura K. 2010. Proteome profiling reveals gender differences in the composition of human serum. *Proteomics* **10**:2678–2691. doi:10.1002/pmic.200900496
- Motta BM, Grander C, Gögele M, Foco L, Vukovic V, Melotti R, Fuchsberger C, De Grandi A, Cantaloni C, Picard A, Mascalzoni D, Rossini A, Pattaro C, Tilg H, Pramstaller PP. 2019. Microbiota, type 2 diabetes and non-alcoholic fatty liver disease: protocol of an observational study. *J Transl Med* **17**:408. doi:10.1186/s12967-019-02130-z
- Noce D, Gögele M, Schwienbacher C, Caprioli G, De Grandi A, Foco L, Platzgummer S, Pramstaller PP, Pattaro C. 2017. Sequential recruitment of study participants may inflate genetic heritability estimates. *Hum Genet* **136**:743–757. doi:10.1007/s00439-017-1785-8
- Orwoll ES, Wiedrick J, Nielson CM, Jacobs J, Baker ES, Piehowski P, Petyuk V, Gao Y, Shi T, Smith RD, Bauer DC, Cummings SR, Lapidus J, Osteoporotic Fractures in Men Study (MrOS) Research Group. 2020. Proteomic assessment of serum biomarkers of longevity in older men. *Aging Cell* **19**:e13253. doi:10.1111/acel.13253
- Palstrøm NB, Matthiesen R, Rasmussen LM, Beck HC. 2022. Recent Developments in Clinical Plasma Proteomics-Applied to Cardiovascular Research. *Biomedicines* **10**:162. doi:10.3390/biomedicines10010162
- Pattaro C, Gögele M, Mascalzoni D, Melotti R, Schwienbacher C, De Grandi A, Foco L, & Elia Y, Linder B, Fuchsberger C, Minelli C, Egger C, Kofink LS, Zanigni S, Schäfer T, Facheris MF, Smáráson SV, Rossini A, Hicks AA, Weiss H, Pramstaller PP. 2015. The Cooperative Health Research in South Tyrol (CHRIS) study: rationale, objectives, and preliminary results. *J Transl Med* **13**:348. doi:10.1186/s12967-015-0704-9

- Pino LK, Searle BC, Huang EL, Noble WS, Hoofnagle AN, MacCoss MJ. 2018. Calibration Using a Single-Point External Reference Material Harmonizes Quantitative Mass Spectrometry Proteomics Data between Platforms and Laboratories. *Anal Chem* **90**:13112–13117. doi:10.1021/acs.analchem.8b04581
- Ramsey JM, Cooper JD, Penninx BWJH, Bahn S. 2016. Variation in serum biomarkers with sex and female hormonal status: implications for clinical tests. *Sci Rep* **6**:26947. doi:10.1038/srep26947
- Reymond S, Gruaz L, Sanchez J-C. 2023. Depletion of abundant plasma proteins for extracellular vesicle proteome characterization: benefits and pitfalls. *Anal Bioanal Chem* **415**:3177–3187. doi:10.1007/s00216-023-04684-w
- Ritchie ME, Phipson B, Wu D, Hu Y, Law CW, Shi W, Smyth GK. 2015. limma powers differential expression analyses for RNA-sequencing and microarray studies. *Nucleic Acids Res* **43**:e47. doi:10.1093/nar/gkv007
- Siino V, Ali A, Accardi G, Aiello A, Ligotti ME, Mosquim Junior S, Candore G, Caruso C, Levander F, Vasto S. 2022. Plasma proteome profiling of healthy individuals across the life span in a Sicilian cohort with long-lived individuals. *Aging Cell* **21**:e13684. doi:10.1111/accel.13684
- Smith JG, Gerszten RE. 2017. Emerging Affinity-Based Proteomic Technologies for Large-Scale Plasma Profiling in Cardiovascular Disease. *Circulation* **135**:1651–1664. doi:10.1161/CIRCULATIONAHA.116.025446
- Steyerberg EW. 2019. Clinical Prediction Models: A Practical Approach to Development, Validation, and Updating, Statistics for Biology and Health. Cham: Springer International Publishing. doi:10.1007/978-3-030-16399-0
- Suhre K, McCarthy MI, Schwenk JM. 2021. Genetics meets proteomics: perspectives for large population-based studies. *Nat Rev Genet* **22**:19–37. doi:10.1038/s41576-020-0268-2
- Sun BB, Chiou J, Traylor M, Benner C, Hsu Y-H, Richardson TG, Surendran P, Mahajan A, Robins C, Vasquez-Grinnell SG, Hou L, Kvikstad EM, Burren OS, Davitte J, Ferber KL, Gillies CE, Hedman ÅK, Hu S, Lin T, Mikkilineni R, Pendergrass RK, Pickering C, Prins B, Baird D, Chen C-Y, Ward LD, Deaton AM, Welsh S, Willis CM, Lehner N, Arnold M, Wörheide MA, Suhre K, Kastenmüller G, Sethi A, Cule M, Raj A, Alnylam Human Genetics, AstraZeneca Genomics Initiative, Biogen Biobank Team, Bristol Myers Squibb, Genentech Human Genetics, GlaxoSmithKline Genomic Sciences, Pfizer Integrative Biology, Population Analytics of Janssen Data Sciences, Regeneron Genetics Center, Burkitt-Gray L, Melamud E, Black MH, Fauman EB, Howson JMM, Kang HM, McCarthy MI, Nioi P, Petrovski S, Scott RA, Smith EN, Szalma S, Waterworth DM, Mitnau LJ, Szustakowski JD, Gibson BW, Miller MR, Whelan CD. 2023. Plasma proteomic associations with genetics and health in the UK Biobank. *Nature*. doi:10.1038/s41586-023-06592-6
- Szyrwiel L, Gille C, Müllleder M, Demichev V, Ralser M. 2023. Fast proteomics with dia-PASEF and analytical flow-rate chromatography. *Proteomics* e2300100. doi:10.1002/pmic.202300100
- Tanaka T, Basisty N, Fantoni G, Candia J, Moore AZ, Biancotto A, Schilling B, Bandinelli S, Ferrucci L. 2020. Plasma proteomic biomarker signature of age predicts health and life span. *Elife* **9**:e61073. doi:10.7554/eLife.61073
- Thomas CE, Dahl L, Byström S, Chen Y, Uhlén M, Målarstig A, Czene K, Hall P, Schwenk JM, Gabrielson M. 2022. Circulating proteins reveal prior use of menopausal hormonal therapy and increased risk of breast cancer. *Transl Oncol* **17**:101339. doi:10.1016/j.tranon.2022.101339
- Tu C, Rudnick PA, Martinez MY, Cheek KL, Stein SE, Slebos RJC, Liebler DC. 2010. Depletion of abundant plasma proteins and limitations of plasma proteomics. *J Proteome Res* **9**:4982–4991. doi:10.1021/pr100646w
- UniProt Consortium. 2008. The universal protein resource (UniProt). *Nucleic Acids Res* **36**:D190-195. doi:10.1093/nar/gkm895

- Vernardis SI, Demichev V, Lemke O, Grüning N-M, Messner C, White M, Pietzner M, Peluso A, Collet T-H, Henning E, Gille C, Campbell A, Hayward C, Porteous DJ, Marioni RE, Mülleder M, Zelezniak A, Wareham NJ, Langenberg C, Farooqi IS, Ralser M. 2023. The impact of acute nutritional interventions on the plasma proteome. *J Clin Endocrinol Metab* dgad031. doi:10.1210/clinem/dgad031
- Verri Hernandez V, Dordevic N, Hantikainen EM, Sigurdsson BB, Smáráson SV, Garcia-Larsen V, Gögele M, Caprioli G, Bozzolan I, Pramstaller PP, Rainer J. 2022. Age, Sex, Body Mass Index, Diet and Menopause Related Metabolites in a Large Homogeneous Alpine Cohort. *Metabolites* **12**:205. doi:10.3390/metabo12030205
- WHO Consultation on Obesity (1999: Geneva S, Organization WH. 2000. Obesity : preventing and managing the global epidemic : report of a WHO consultation. World Health Organization.
- Xu M, Zhu S, Xu R, Lin N. 2020. Identification of CELSR2 as a novel prognostic biomarker for hepatocellular carcinoma. *BMC Cancer* **20**:313. doi:10.1186/s12885-020-06813-5
- Xu R, Gong CX, Duan CM, Huang JC, Yang GQ, Yuan JJ, Zhang Q, Xiong XY, Yang QW. 2020. Age-Dependent Changes in the Plasma Proteome of Healthy Adults. *J Nutr Health Aging* **24**:846–856. doi:10.1007/s12603-020-1392-6
- Zaghlool SB, Sharma S, Molnar M, Matías-García PR, Elhadad MA, Waldenberger M, Peters A, Rathmann W, Graumann J, Gieger C, Grallert H, Suhre K. 2021. Revealing the role of the human blood plasma proteome in obesity using genetic drivers. *Nat Commun* **12**:1279. doi:10.1038/s41467-021-21542-4

Acknowledgements

The CHRIS study is a collaborative effort between the Eurac Research Institute for Biomedicine and the Healthcare System of the Autonomous Province of Bozen/Bolzano (SüdtirolerSanitätsbetrieb/Azienda Sanitaria dell'Alto Adige). The investigators thank all study participants from the middle and upper Vinschgau/Val Venosta, the general practitioners, the personnel of the Hospital of Schlanders/Silandro, the field study team and the personnel of the CHRIS Biobank (BRIF code BRIF6107) for their support and collaboration. The authors thank the Department of Innovation, Research University and Museums of the Autonomous Province of Bozen/Bolzano for covering the Open Access publication costs. We thank the Charité Core Facility High Throughput Mass Spectrometry, especially Daniela Ludwig for sample preparation. The graphical abstract was created with biorender.com.

Financial Disclosure Statement

The CHRIS study was funded by the Department of Innovation, Research and University of the Autonomous Province of Bolzano-South Tyrol and supported by the European Regional Development Fund (FESR1157). Measurements were partly funded by Wellcome Trust (IA 200829/Z/16) to Markus Ralser. The funders had no role in study design, data collection and analysis, decision to publish, or preparation of the manuscript.

Competing Interest Statement

Markus Ralser is founder and shareholder of Elitptica Ltd. Michael Mülleder is a consultant and shareholder of Eliptica Ltd.

Institutional Review Board Statement

The study was conducted according to the guidelines of the Declaration of Helsinki and approved by the Ethics Committee of the Health Authority of the Autonomous Province of Bolzano (Südtiroler Sanitätsbetrieb/Azienda Sanitaria dell'Alto Adige; protocol No. 21/2011, 19 April 2011).

Informed Consent Statement

Informed consent was obtained from all subjects involved in the study.

Author Contributions

Conceptualization: J.R., M.R., N.D., C.D., E.H.; Investigation: V.V.H., F.A., A.D., M.M.; Formal Analysis: N.D., C.D., J.R. V.F., M.M.; Writing – original draft preparation: E.H., C.D., J.R., N.D., F.A.; Writing – review and editing: N.D., C.D., E.H., M.M., V.F., V.V.H., A.D., F.S.D., P.P.P., M.R., J.R.; Funding acquisition: M.R., P.P.P..

Supplementary Information

Document (pdf) with Supplementary Figures S1-S156 and Supplementary Tables S3-S44. Spread sheet (xlsx) with Supplementary Table S1 (results from association analyses). Spread sheet (xlsx) with Supplementary Table S2 (functional annotations of detected proteins). Spread sheet (xlsx) with Supplementary Table S45 (comparison of results with literature).