

Supplemental figures and tables

Published benefits of ivermectin use in Itajaí, Brazil for COVID-19 infection, hospitalisation, and mortality are entirely explained by statistical artefacts

Robin Mills Ana Carolina Peçanha Antonio Greg Tucker-Kellogg*

List of Tables

S1	i-ENR model with probabilistic stop on infection. Stop probability: 0.30 (irregular), 0.05 (regular). Statistics for hospitalisations and deaths are reported for all individuals in the cohort.	3
S2	i-ENR model with uniform stop on infection. Stop probability: 1.0 (all individuals). Statistics for hospitalisations and deaths are reported for all individuals in the cohort.	4
S3	i-ENR model with probabilistic stop on infection. Stop probability: 0.30 (irregular), 0.05 (regular). Statistics for hospitalisations and deaths are limited to infected individuals.	4
S4	i-ENR model with uniform stop on infection. Stop probability: 1.0 (all individuals). Statistics for hospitalisations and deaths are limited to infected individuals. . . .	5
S5	i-INF model with probabilistic stop on infection. Stop probability: 0.30 (irregular), 0.05 (regular). Statistics for hospitalisations and deaths are reported for all individuals in the cohort.	6
S6	i-INF model with uniform stop on infection. Stop probability: 1.0 (all individuals). Statistics for hospitalisations and deaths are reported for all individuals in the cohort.	7
S7	i-INF model with probabilistic stop on infection. Stop probability: 0.30 (irregular), 0.05 (regular). Statistics for hospitalisations and deaths are limited to infected individuals.	7
S8	i-INF model with uniform stop on infection. Stop probability: 1.0 (all individuals). Statistics for hospitalisations and deaths are limited to infected individuals. . . .	8
S9	i-KC22 model with probabilistic stop on infection. Stop probability: 0.30 (irregular), 0.05 (regular). Statistics for hospitalisations and deaths are reported for all individuals in the cohort.	9
S10	i-KC22 model with uniform stop on infection. Stop probability: 1.0 (all individuals). Statistics for hospitalisations and deaths are reported for all individuals in the cohort.	10
S11	i-KC22 model with probabilistic stop on infection. Stop probability: 0.30 (irregular), 0.05 (regular). Statistics for hospitalisations and deaths are limited to infected individuals.	10

*correspondence to dbsgtk@nus.edu.sg

S12	i-KC22 model with uniform stop on infection. Stop probability: 1.0 (all individuals). Statistics for hospitalisations and deaths are limited to infected individuals. . . .	11
-----	--	----

List of Figures

S1	"Missed" deaths	12
S2	Attrition bias in the i-INF model	13
S3	Attrition bias in the i-KC22 model	14
S4	Apparent protection of "regular" users in the i-INF model	15
S5	Apparent protection of "regular" users in the i-KC22 model	16

i-ENR model simulations

Summary statistics	Simulation				KB22/KC22			
	RR	95% CI	Risk Red.	p.val	RR	95% CI	Risk Red.	p.val
Infection								
non-user vs user	0.83	0.80–0.88	17%	<0.001	0.56	0.53–0.58	44%	<0.001
non-user vs irregular	0.94	0.88–1.00	6%	0.022	0.68	0.64–0.73	32%	<0.001
non-user vs regular	0.72	0.64–0.81	28%	<0.001	0.51	0.45–0.57	49%	<0.001
irregular vs regular	0.77	0.68–0.86	23%	<0.001	0.75	0.66–0.84	25%	<0.001
Hospitalisation								
non-user vs user	0.75	0.56–1.03	25%	0.039	0.35	0.26–0.47	65%	<0.001
non-user vs irregular	1.23	0.86–1.76	-23%	0.856	0.52	0.34–0.74	48%	<0.001
non-user vs regular	0.33	0.06–0.72	67%	0.002	0.00	0.00–0.00	100%	<0.001
irregular vs regular	0.27	0.05–0.60	73%	<0.001	0.00	0.00–0.00	100%	<0.001
Death								
non-user vs user	0.71	0.50–1.02	29%	0.026	0.32	0.23–0.44	68%	<0.001
non-user vs irregular	1.26	0.84–1.89	-26%	0.837	0.49	0.31–0.74	51%	<0.001
non-user vs regular	0.22	0.02–0.57	78%	0.002	0.14	0.00–0.38	86%	<0.001
irregular vs regular	0.18	0.01–0.46	82%	<0.001	0.28	0.00–0.82	72%	0.070

Table S1

i-ENR model with probabilistic stop on infection. Stop probability: 0.30 (irregular), 0.05 (regular). Statistics for hospitalisations and deaths are reported for all individuals in the cohort.

Summary statistics	Simulation				KB22/KC22			
	RR	95% CI	Risk Red.	p.val	RR	95% CI	Risk Red.	p.val
Infection								
non-user vs user	0.83	0.80–0.88	17%	<0.001	0.56	0.53–0.58	44%	<0.001
non-user vs irregular	1.18	1.11–1.25	-18%	1.000	0.68	0.64–0.72	32%	<0.001
non-user vs regular	0.45	0.39–0.52	55%	<0.001	0.51	0.45–0.58	49%	<0.001
irregular vs regular	0.38	0.33–0.44	62%	<0.001	0.75	0.66–0.85	25%	<0.001
Hospitalisation								
non-user vs user	0.75	0.56–1.03	25%	0.039	0.35	0.26–0.46	65%	<0.001
non-user vs irregular	1.30	0.92–1.86	-30%	0.915	0.52	0.35–0.73	48%	<0.001
non-user vs regular	0.32	0.06–0.71	68%	0.002	0.00	0.00–0.00	100%	<0.001
irregular vs regular	0.25	0.04–0.56	75%	<0.001	0.00	0.00–0.00	100%	<0.001
Death								
non-user vs user	0.71	0.50–1.02	29%	0.026	0.32	0.22–0.44	68%	<0.001
non-user vs irregular	1.35	0.91–2.01	-35%	0.926	0.49	0.32–0.74	51%	<0.001
non-user vs regular	0.21	0.01–0.55	79%	0.001	0.14	0.00–0.38	86%	<0.001
irregular vs regular	0.16	0.01–0.41	84%	<0.001	0.28	0.00–0.78	72%	0.070

Table S2

i-ENR model with uniform stop on infection. Stop probability: 1.0 (all individuals). Statistics for hospitalisations and deaths are reported for all individuals in the cohort.

Summary statistics	Simulation				KB22/KC22			
	RR	95% CI	Risk Red.	p.val	RR	95% CI	Risk Red.	p.val
Infection								
non-user vs user	0.83	0.80–0.88	17%	<0.001	0.56	0.53–0.58	44%	<0.001
non-user vs irregular	0.94	0.88–1.00	6%	0.022	0.68	0.64–0.72	32%	<0.001
non-user vs regular	0.72	0.64–0.81	28%	<0.001	0.51	0.45–0.58	49%	<0.001
irregular vs regular	0.77	0.68–0.86	23%	<0.001	0.75	0.66–0.85	25%	<0.001
Hospitalisation								
non-user vs user	0.90	0.67–1.23	10%	0.217	0.63	0.47–0.83	37%	0.001
non-user vs irregular	1.31	0.92–1.86	-31%	0.916	0.76	0.51–1.08	24%	0.143
non-user vs regular	0.45	0.09–1.00	55%	0.034	0.00	0.00–0.00	100%	<0.001
irregular vs regular	0.35	0.07–0.78	65%	0.001	0.00	0.00–0.00	100%	0.003
Death								
non-user vs user	0.85	0.61–1.22	15%	0.150	0.57	0.40–0.80	43%	<0.001
non-user vs irregular	1.34	0.90–2.00	-34%	0.907	0.72	0.45–1.07	28%	0.149
non-user vs regular	0.31	0.02–0.78	69%	0.005	0.27	0.00–0.74	73%	0.044
irregular vs regular	0.23	0.02–0.60	77%	<0.001	0.38	0.00–1.09	62%	0.212

Table S3

i-ENR model with probabilistic stop on infection. Stop probability: 0.30 (irregular), 0.05 (regular). Statistics for hospitalisations and deaths are limited to infected individuals.

Summary statistics	Simulation				KB22/KC22			
	RR	95% CI	Risk Red.	p.val	RR	95% CI	Risk Red.	p.val
Infection								
non-user vs user	0.83	0.80–0.88	17%	<0.001	0.56	0.53–0.58	44%	<0.001
non-user vs irregular	1.18	1.11–1.25	-18%	1.000	0.68	0.65–0.73	32%	<0.001
non-user vs regular	0.45	0.39–0.52	55%	<0.001	0.51	0.45–0.58	49%	<0.001
irregular vs regular	0.38	0.33–0.44	62%	<0.001	0.75	0.66–0.84	25%	<0.001
Hospitalisation								
non-user vs user	0.90	0.67–1.23	10%	0.217	0.63	0.47–0.83	37%	0.001
non-user vs irregular	1.11	0.78–1.56	-11%	0.687	0.76	0.50–1.07	24%	0.143
non-user vs regular	0.71	0.13–1.57	29%	0.215	0.00	0.00–0.00	100%	<0.001
irregular vs regular	0.65	0.12–1.44	35%	0.168	0.00	0.00–0.00	100%	0.003
Death								
non-user vs user	0.85	0.61–1.22	15%	0.150	0.57	0.41–0.79	43%	<0.001
non-user vs irregular	1.15	0.78–1.69	-15%	0.723	0.72	0.45–1.07	28%	0.149
non-user vs regular	0.46	0.03–1.20	54%	0.084	0.27	0.00–0.71	73%	0.044
irregular vs regular	0.41	0.03–1.07	59%	0.046	0.38	0.00–1.09	62%	0.212

Table S4

i-ENR model with uniform stop on infection. Stop probability: 1.0 (all individuals). Statistics for hospitalisations and deaths are limited to infected individuals.

i-INF model simulations

Summary statistics	Simulation				KB22/KC22			
	RR	95% CI	Risk Red.	p.val	RR	95% CI	Risk Red.	p.val
Infection								
non-user vs user	0.73	0.70–0.76	27%	<0.001	0.56	0.53–0.58	44%	<0.001
non-user vs irregular	0.82	0.77–0.87	18%	<0.001	0.68	0.64–0.72	32%	<0.001
non-user vs regular	0.63	0.55–0.70	37%	<0.001	0.51	0.45–0.57	49%	<0.001
irregular vs regular	0.76	0.67–0.86	24%	<0.001	0.75	0.66–0.84	25%	<0.001
Hospitalisation								
non-user vs user	0.59	0.44–0.80	41%	<0.001	0.35	0.26–0.47	65%	<0.001
non-user vs irregular	0.97	0.67–1.37	3%	0.380	0.52	0.35–0.74	48%	<0.001
non-user vs regular	0.25	0.04–0.56	75%	<0.001	0.00	0.00–0.00	100%	<0.001
irregular vs regular	0.26	0.04–0.61	74%	0.001	0.00	0.00–0.00	100%	<0.001
Death								
non-user vs user	0.54	0.39–0.77	46%	0.002	0.32	0.22–0.44	68%	<0.001
non-user vs irregular	0.97	0.64–1.43	3%	0.384	0.49	0.31–0.75	51%	<0.001
non-user vs regular	0.16	0.01–0.42	84%	<0.001	0.14	0.00–0.39	86%	<0.001
irregular vs regular	0.17	0.01–0.46	83%	<0.001	0.28	0.00–0.82	72%	0.070

Table S5

i-INF model with probabilistic stop on infection. Stop probability: 0.30 (irregular), 0.05 (regular). Statistics for hospitalisations and deaths are reported for all individuals in the cohort.

Summary statistics	Simulation				KB22/KC22			
	RR	95% CI	Risk Red.	p.val	RR	95% CI	Risk Red.	p.val
Infection								
non-user vs user	0.73	0.70–0.76	27%	<0.001	0.56	0.53–0.58	44%	<0.001
non-user vs irregular	1.03	0.98–1.09	-3%	0.867	0.68	0.64–0.73	32%	<0.001
non-user vs regular	0.39	0.33–0.45	61%	<0.001	0.51	0.45–0.58	49%	<0.001
irregular vs regular	0.38	0.32–0.44	62%	<0.001	0.75	0.66–0.85	25%	<0.001
Hospitalisation								
non-user vs user	0.59	0.44–0.80	41%	<0.001	0.35	0.26–0.46	65%	<0.001
non-user vs irregular	1.02	0.72–1.44	-2%	0.509	0.52	0.35–0.74	48%	<0.001
non-user vs regular	0.24	0.04–0.56	76%	<0.001	0.00	0.00–0.00	100%	<0.001
irregular vs regular	0.24	0.04–0.56	76%	<0.001	0.00	0.00–0.00	100%	<0.001
Death								
non-user vs user	0.54	0.39–0.77	46%	0.002	0.32	0.22–0.45	68%	<0.001
non-user vs irregular	1.04	0.70–1.52	-4%	0.527	0.49	0.31–0.74	51%	<0.001
non-user vs regular	0.15	0.01–0.40	85%	<0.001	0.14	0.00–0.38	86%	<0.001
irregular vs regular	0.15	0.01–0.41	85%	<0.001	0.28	0.00–0.82	72%	0.070

Table S6

i-INF model with uniform stop on infection. Stop probability: 1.0 (all individuals). Statistics for hospitalisations and deaths are reported for all individuals in the cohort.

Summary statistics	Simulation				KB22/KC22			
	RR	95% CI	Risk Red.	p.val	RR	95% CI	Risk Red.	p.val
Infection								
non-user vs user	0.73	0.70–0.76	27%	<0.001	0.56	0.53–0.58	44%	<0.001
non-user vs irregular	0.82	0.77–0.87	18%	<0.001	0.68	0.64–0.73	32%	<0.001
non-user vs regular	0.63	0.55–0.70	37%	<0.001	0.51	0.45–0.57	49%	<0.001
irregular vs regular	0.76	0.67–0.86	24%	<0.001	0.75	0.66–0.85	25%	<0.001
Hospitalisation								
non-user vs user	0.81	0.61–1.09	19%	0.066	0.63	0.47–0.83	37%	0.001
non-user vs irregular	1.18	0.82–1.65	-18%	0.798	0.76	0.51–1.07	24%	0.143
non-user vs regular	0.40	0.06–0.89	60%	0.018	0.00	0.00–0.00	100%	<0.001
irregular vs regular	0.35	0.06–0.79	65%	0.005	0.00	0.00–0.00	100%	0.003
Death								
non-user vs user	0.74	0.53–1.05	26%	0.040	0.57	0.40–0.79	43%	<0.001
non-user vs irregular	1.17	0.79–1.73	-17%	0.766	0.72	0.46–1.07	28%	0.149
non-user vs regular	0.26	0.01–0.67	74%	0.003	0.27	0.00–0.71	73%	0.044
irregular vs regular	0.22	0.01–0.60	78%	0.002	0.38	0.00–1.05	62%	0.212

Table S7

i-INF model with probabilistic stop on infection. Stop probability: 0.30 (irregular), 0.05 (regular). Statistics for hospitalisations and deaths are limited to infected individuals.

Summary statistics	Simulation				KB22/KC22			
	RR	95% CI	Risk Red.	p.val	RR	95% CI	Risk Red.	p.val
Infection								
non-user vs user	0.73	0.70–0.76	27%	<0.001	0.56	0.53–0.58	44%	<0.001
non-user vs irregular	1.03	0.98–1.09	-3%	0.867	0.68	0.65–0.73	32%	<0.001
non-user vs regular	0.39	0.33–0.45	61%	<0.001	0.51	0.45–0.58	49%	<0.001
irregular vs regular	0.38	0.32–0.44	62%	<0.001	0.75	0.66–0.85	25%	<0.001
Hospitalisation								
non-user vs user	0.81	0.61–1.09	19%	0.066	0.63	0.47–0.83	37%	0.001
non-user vs irregular	0.99	0.70–1.39	1%	0.436	0.76	0.51–1.08	24%	0.143
non-user vs regular	0.62	0.10–1.41	38%	0.147	0.00	0.00–0.00	100%	<0.001
irregular vs regular	0.64	0.10–1.46	36%	0.153	0.00	0.00–0.00	100%	0.003
Death								
non-user vs user	0.74	0.53–1.05	26%	0.040	0.57	0.41–0.79	43%	<0.001
non-user vs irregular	1.00	0.68–1.46	-0%	0.464	0.72	0.45–1.08	28%	0.149
non-user vs regular	0.38	0.02–1.02	62%	0.041	0.27	0.00–0.74	73%	0.044
irregular vs regular	0.39	0.02–1.06	61%	0.047	0.38	0.00–1.05	62%	0.212

Table S8

i-INF model with uniform stop on infection. Stop probability: 1.0 (all individuals). Statistics for hospitalisations and deaths are limited to infected individuals.

i-KC22 model simulations

Summary statistics	Simulation				KB22/KC22			
	RR	95% CI	Risk Red.	p.val	RR	95% CI	Risk Red.	p.val
Infection								
non-user vs user	0.49	0.47–0.51	51%	<0.001	0.56	0.53–0.58	44%	<0.001
non-user vs irregular	0.64	0.60–0.68	36%	<0.001	0.68	0.64–0.73	32%	<0.001
non-user vs regular	0.37	0.33–0.43	63%	<0.001	0.51	0.45–0.57	49%	<0.001
irregular vs regular	0.59	0.51–0.67	41%	<0.001	0.75	0.66–0.85	25%	<0.001
Hospitalisation								
non-user vs user	0.40	0.28–0.56	60%	<0.001	0.35	0.26–0.47	65%	<0.001
non-user vs irregular	0.74	0.49–1.09	26%	0.045	0.52	0.34–0.74	48%	<0.001
non-user vs regular	0.15	0.01–0.39	85%	<0.001	0.00	0.00–0.00	100%	<0.001
irregular vs regular	0.21	0.01–0.56	79%	<0.001	0.00	0.00–0.00	100%	<0.001
Death								
non-user vs user	0.34	0.24–0.47	66%	<0.001	0.32	0.22–0.44	68%	<0.001
non-user vs irregular	0.67	0.45–0.98	33%	0.018	0.49	0.31–0.74	51%	<0.001
non-user vs regular	0.08	0.00–0.23	92%	<0.001	0.14	0.00–0.38	86%	<0.001
irregular vs regular	0.13	0.00–0.37	87%	<0.001	0.28	0.00–0.79	72%	0.070

Table S9

i-KC22 model with probabilistic stop on infection. Stop probability: 0.30 (irregular), 0.05 (regular). Statistics for hospitalisations and deaths are reported for all individuals in the cohort.

Summary statistics	Simulation				KB22/KC22			
	RR	95% CI	Risk Red.	p.val	RR	95% CI	Risk Red.	p.val
Infection								
non-user vs user	0.49	0.47–0.51	51%	<0.001	0.56	0.53–0.58	44%	<0.001
non-user vs irregular	1.00	0.95–1.05	0%	0.450	0.68	0.64–0.73	32%	<0.001
non-user vs regular	0.10	0.07–0.12	90%	<0.001	0.51	0.45–0.58	49%	<0.001
irregular vs regular	0.10	0.07–0.12	90%	<0.001	0.75	0.66–0.85	25%	<0.001
Hospitalisation								
non-user vs user	0.40	0.28–0.56	60%	<0.001	0.35	0.26–0.47	65%	<0.001
non-user vs irregular	0.76	0.51–1.11	24%	0.062	0.52	0.34–0.73	48%	<0.001
non-user vs regular	0.14	0.01–0.37	86%	<0.001	0.00	0.00–0.00	100%	<0.001
irregular vs regular	0.19	0.01–0.52	81%	<0.001	0.00	0.00–0.00	100%	<0.001
Death								
non-user vs user	0.34	0.24–0.47	66%	<0.001	0.32	0.23–0.44	68%	<0.001
non-user vs irregular	0.70	0.47–1.01	30%	0.023	0.49	0.31–0.74	51%	<0.001
non-user vs regular	0.08	0.00–0.22	92%	<0.001	0.14	0.00–0.37	86%	<0.001
irregular vs regular	0.11	0.00–0.33	89%	<0.001	0.28	0.00–0.82	72%	0.070

Table S10

i-KC22 model with uniform stop on infection. Stop probability: 1.0 (all individuals). Statistics for hospitalisations and deaths are reported for all individuals in the cohort.

Summary statistics	Simulation				KB22/KC22			
	RR	95% CI	Risk Red.	p.val	RR	95% CI	Risk Red.	p.val
Infection								
non-user vs user	0.49	0.47–0.51	51%	<0.001	0.56	0.53–0.58	44%	<0.001
non-user vs irregular	0.64	0.60–0.68	36%	<0.001	0.68	0.64–0.72	32%	<0.001
non-user vs regular	0.37	0.33–0.43	63%	<0.001	0.51	0.45–0.58	49%	<0.001
irregular vs regular	0.59	0.51–0.67	41%	<0.001	0.75	0.66–0.85	25%	<0.001
Hospitalisation								
non-user vs user	0.82	0.58–1.14	18%	0.100	0.63	0.48–0.83	37%	0.001
non-user vs irregular	1.15	0.76–1.69	-15%	0.734	0.76	0.50–1.08	24%	0.143
non-user vs regular	0.40	0.02–1.02	60%	0.038	0.00	0.00–0.00	100%	<0.001
irregular vs regular	0.35	0.02–0.94	65%	0.015	0.00	0.00–0.00	100%	0.003
Death								
non-user vs user	0.69	0.49–0.96	31%	0.011	0.57	0.40–0.78	43%	<0.001
non-user vs irregular	1.05	0.70–1.52	-5%	0.586	0.72	0.46–1.07	28%	0.149
non-user vs regular	0.22	0.01–0.61	78%	0.005	0.27	0.00–0.74	73%	0.044
irregular vs regular	0.21	0.01–0.62	79%	0.004	0.38	0.00–1.09	62%	0.212

Table S11

i-KC22 model with probabilistic stop on infection. Stop probability: 0.30 (irregular), 0.05 (regular). Statistics for hospitalisations and deaths are limited to infected individuals.

Summary statistics	Simulation				KB22/KC22			
	RR	95% CI	Risk Red.	p.val	RR	95% CI	Risk Red.	p.val
Infection								
non-user vs user	0.49	0.47–0.51	51%	<0.001	0.56	0.53–0.58	44%	<0.001
non-user vs irregular	1.00	0.95–1.05	0%	0.450	0.68	0.64–0.72	32%	<0.001
non-user vs regular	0.10	0.07–0.12	90%	<0.001	0.51	0.45–0.57	49%	<0.001
irregular vs regular	0.10	0.07–0.12	90%	<0.001	0.75	0.66–0.85	25%	<0.001
Hospitalisation								
non-user vs user	0.82	0.58–1.14	18%	0.100	0.63	0.47–0.84	37%	0.001
non-user vs irregular	0.76	0.51–1.11	24%	0.067	0.76	0.50–1.05	24%	0.143
non-user vs regular	1.48	0.07–3.84	-48%	0.579	0.00	0.00–0.00	100%	<0.001
irregular vs regular	1.97	0.08–5.30	-97%	0.768	0.00	0.00–0.00	100%	0.003
Death								
non-user vs user	0.69	0.49–0.96	31%	0.011	0.57	0.41–0.78	43%	<0.001
non-user vs irregular	0.70	0.47–1.01	30%	0.023	0.72	0.45–1.07	28%	0.149
non-user vs regular	0.79	0.02–2.24	21%	0.301	0.27	0.00–0.71	73%	0.044
irregular vs regular	1.15	0.02–3.37	-15%	0.539	0.38	0.00–1.05	62%	0.212

Table S12

i-KC22 model with uniform stop on infection. Stop probability: 1.0 (all individuals). Statistics for hospitalisations and deaths are limited to infected individuals.

Supplemental Figures

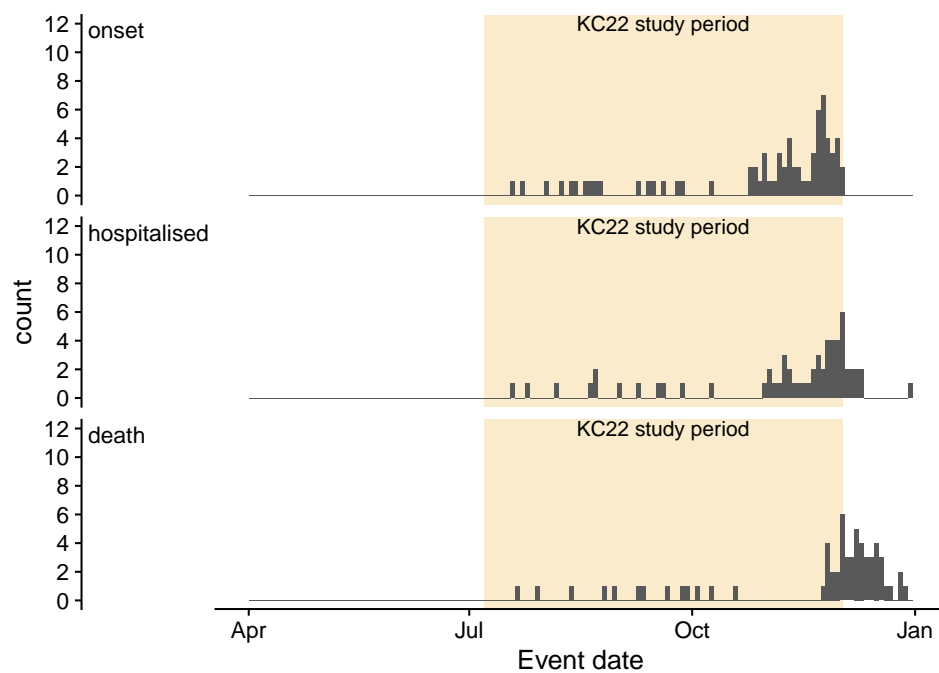


Figure S1
“Missed” deaths. Event dates for missed Covid deaths after symptom onset during the study period based on matching the SUS data from KC22. The three sub-panels show recorded dates of symptom onset, hospitalisation, and death.

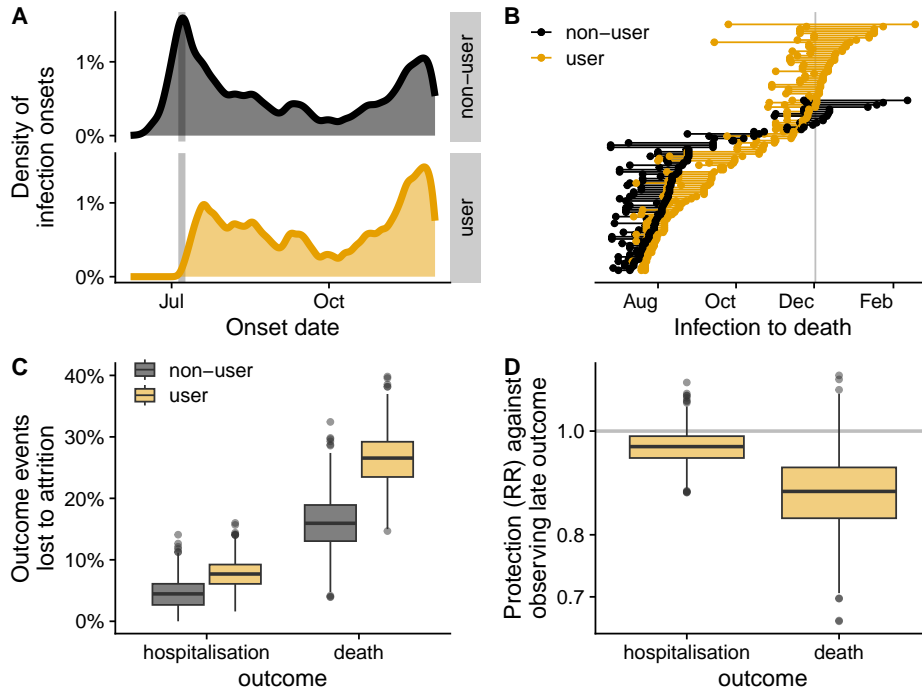


Figure S2

Attrition bias in the i-INF model. A. Empirical distributions of simulated infection dates over 1000 runs of the i-INF model. Note the delayed early peak of infections in the ivermectin user group. B. Example from one typical simulation of uncounted deaths among ivermectin users. Each line segment represents an individual in the simulation who was infected and later died, with infection and death dates at the end points. The study end date is marked with a vertical line. C. Hospitalisations and deaths are lost to attrition more frequently in the user group (1000 simulations). D. The ivermectin user group has apparent (but fictitious) protection from hospitalisation and death compared to non-users.

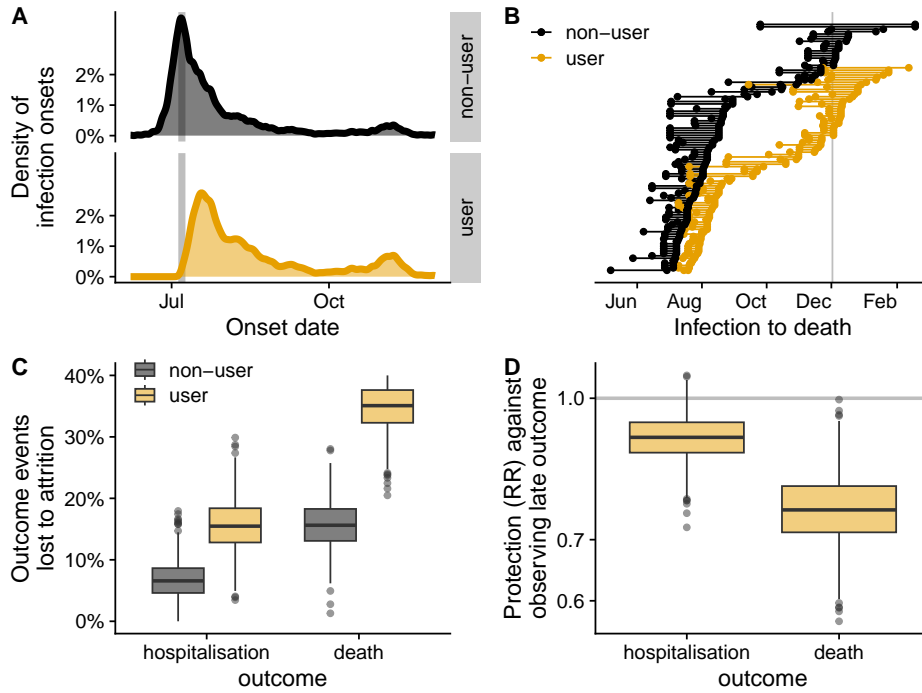


Figure S3

Attrition bias in the i-KC22 model. A. Empirical distributions of simulated infection dates over 1000 runs of the modified i-KC22 model including late events. Note the delayed early peak of infections in the ivermectin user group. B. Example from one typical simulation of uncounted deaths among ivermectin users. Each line segment represents an individual in the simulation who was infected and later died, with infection and death dates at the end points. The study end date is marked with a vertical line. C. Hospitalisations and deaths are lost to attrition more frequently in the user group (1000 simulations). D. The ivermectin user group has apparent (but fictitious) protection from hospitalisation and death compared to non-users.

Immortal time bias protection of infected 'regular' users

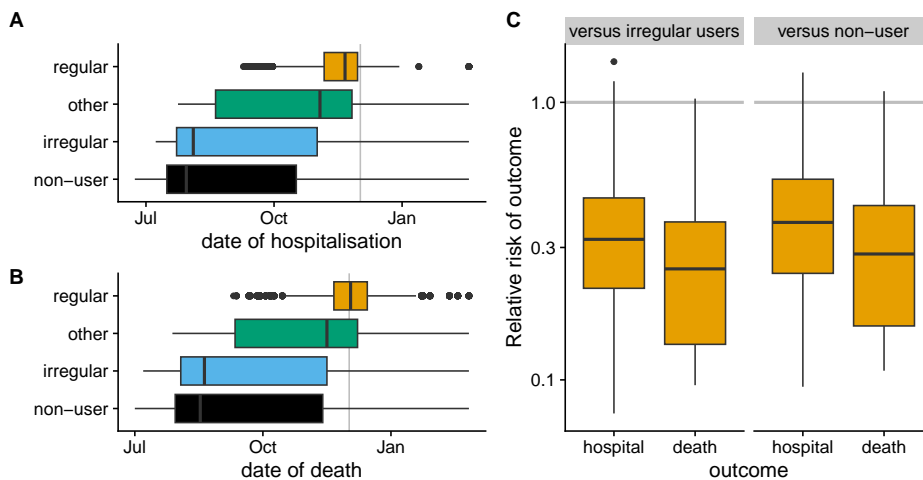


Figure S4

Apparent protection of “regular” users in the i-INF model. A. Simulated dates of hospitalisation in i-INF for individuals grouped by exposure according to KB22-defined usage groups. The study end date is marked with a vertical line. B. Dates of death. C. Relative risk of hospitalisation and death for “regular” ivermectin users compared to “irregular” and non-users. Risk ratios are calculated and plotted for each of 1000 simulations. Dates of hospitalisation and death are shown for all individuals across 1000 simulations.

Immortal time bias protection of infected 'regular' users

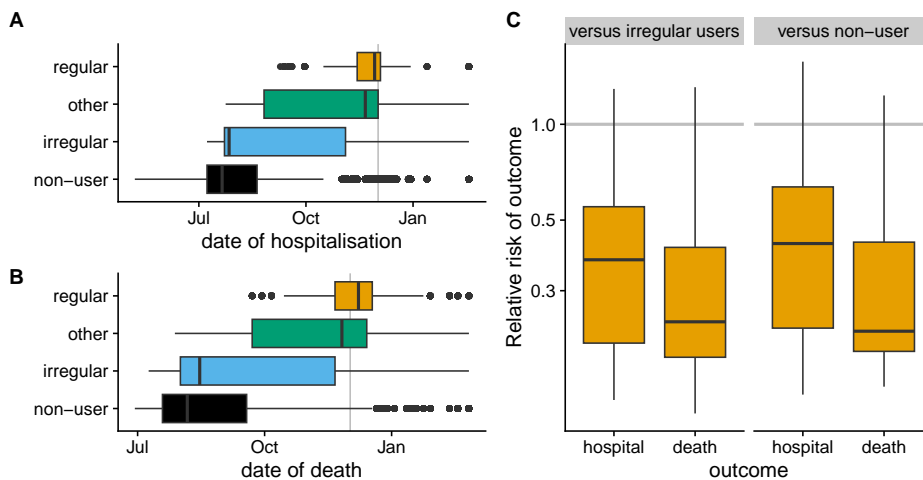


Figure S5

Apparent protection of "regular" users in the i-KC22 model. A. Simulated dates of hospitalisation in i-INF for individuals grouped by exposure according to KB22-defined usage groups. The study end date is marked with a vertical line. B. Dates of death. C. Relative risk of hospitalisation and death for "regular" ivermectin users compared to "irregular" and non-users. Risk ratios are calculated and plotted for each of 1000 simulations. Dates of hospitalisation and death are shown for all individuals across 1000 simulations.