

1 **Wastewater detection of emerging arbovirus infections: Case study of Dengue in the**
2 **United States**

3
4 Marlene K. Wolfe¹, Abigail Harvey Paulos¹, Alessandro Zulli², Dorothea Duong³, Bridgette
5 Sheldon³, Bradley J. White³, Alexandria B. Boehm^{2*}

- 6
7 1. Gangarosa Department of Environmental Health, Rollins School of Public Health, Emory
8 University, Atlanta, GA, USA, 30322
9 2. Department of Civil & Environmental Engineering, School of Engineering and Doerr
10 School of Sustainability, Stanford University, Stanford, CA, USA, 94305
11 3. Verily Life Sciences, South San Francisco, CA, USA, 94080

12
13 * Corresponding author: 473 Via Ortega, Stanford, CA 94305, aboehm@stanford.edu, 650-724-
14 9128

15
16
17 **Abstract**

18 Climate change and urbanization are increasing the distribution of insect vectors of infectious
19 diseases. Dengue virus is an arbovirus that causes nearly 100 million symptomatic infections
20 per year and is endemic in 124 countries, and the range of its mosquito vectors continues to
21 increase. Surveillance of dengue virus infections is complicated by the fact that infections can
22 be asymptomatic and symptoms may not be readily recognizable to clinicians. Here we show
23 that wastewater monitoring can be used to detect dengue virus RNA to yield information about
24 circulation of dengue infections in a community. We collected three samples of wastewater
25 solids per week from three different wastewater treatment plants in Miami-Dade County, Florida
26 where dengue infections have been locally acquired. Using molecular methods, we tested
27 wastewater solids for RNA from the 4 dengue virus serotypes and consistently detected dengue
28 virus 3 RNA at all three wastewater plants, and did not detect the other 3 serotypes. According
29 to publicly available data on dengue infections, the vast majority of infections were caused by
30 serotype 3. Wastewater detection of dengue virus RNA is possible with as few as 4.23
31 laboratory confirmed dengue cases per 1 million people, based on publicly available infection
32 data.

33
34 Synopsis: Dengue virus RNA was detected in wastewater solids in a location with local- and
35 travel-associated dengue infections.

36
37 Key Words: Dengue virus, Wastewater, Epidemiology, digital PCR, wastewater-based
38 epidemiology, arbovirus

39

40

41 **Introduction**

42 Over the last 50 years outbreaks of arthropod-borne viruses (arboviruses) have increased
43 dramatically, due to the limited clinical interventions available, increasing urbanization of tropical
44 countries, and the growing range of their vectors, the *Aedes* and *Culex* mosquitoes.¹⁻⁵ Among
45 important emerging and re-emerging mosquito-borne arboviruses associated with *Culex spp.*
46 (West Nile Virus, Japanese encephalitis) and *Aedes spp.* (Zika virus, yellow fever, chikungunya,
47 dengue virus), dengue virus (DENV) is the most common.^{6,7} In the 1960's, dengue was endemic
48 in 10 countries and caused a few thousand cases annually, but is now endemic in 124 countries
49 with an estimated 96 million symptomatic infections and 40,000 deaths annually.^{4,6} *Aedes*
50 *aegypti* is the principal vector for DENV, and infests areas with a total population of more than 3
51 billion people.³ As the distribution of these vectors increases, there is substantial need to
52 monitor the presence and spread of diseases they carry as they enter new communities.

53

54 Testing wastewater as a naturally-composited community sample can support infectious
55 disease surveillance, as it contains bodily secretions including urine, feces, vomit, saliva, and
56 sputum. Wastewater testing for viral nucleic acids is rapid and effective for monitoring both the
57 presence and levels of a range of viral diseases, including respiratory viruses (e.g. SARS-CoV-
58 2, influenza), enteric viruses, (e.g. norovirus, rotavirus), and even poxviruses (mpox virus).⁸⁻¹⁴
59 Wastewater monitoring to capture an emerging viral disease spreading into new geographic
60 areas has been successfully implemented for mpox, and used to supplement public health
61 response to the outbreak.¹⁰ Early identification of dengue outbreaks is critical for quick and
62 effective action, but traditional approaches including clinical testing, mosquito surveillance, and
63 seroprevalence studies in humans, livestock, and wildlife are resources intensive and often
64 involve reporting delays.¹⁵ In the United States, existing wastewater monitoring systems in
65 locations with known or anticipated risk of DENV could be leveraged to address this expanding
66 risk.

67

68 Wastewater monitoring has been previously proposed as a promising tool for population-level
69 monitoring of DENV, but limited studies testing natural wastewater have not detected the virus
70 .^{16,17} DENV is an enveloped virus in the *Flaviviridae* family with a single stranded RNA genome,
71 and is shed in the urine and saliva of infected individuals and thus likely to be excreted into
72 wastewater.¹⁸⁻²⁴ Quantitative data are limited, but shedding in urine has been estimated to be
73 up to around 10³ RNA copies/mL (or 10⁶ RNA copies per day) at the peak of shedding, around
74 days 8-10 after symptom onset.^{16,19} Peak shedding occurs during days 0-7 in saliva. DENV
75 shedding in human stool is currently unknown; however, Zika virus, another mosquito-borne
76 virus of the same genus as DENV, has been detected in rectal swabs of infected humans,
77 suggesting DENV might be shed in human stool as well.^{25,26} Laboratory spike-in experiments
78 have demonstrated that DENV can persist in wastewaters for days to weeks.²⁷⁻²⁹

79

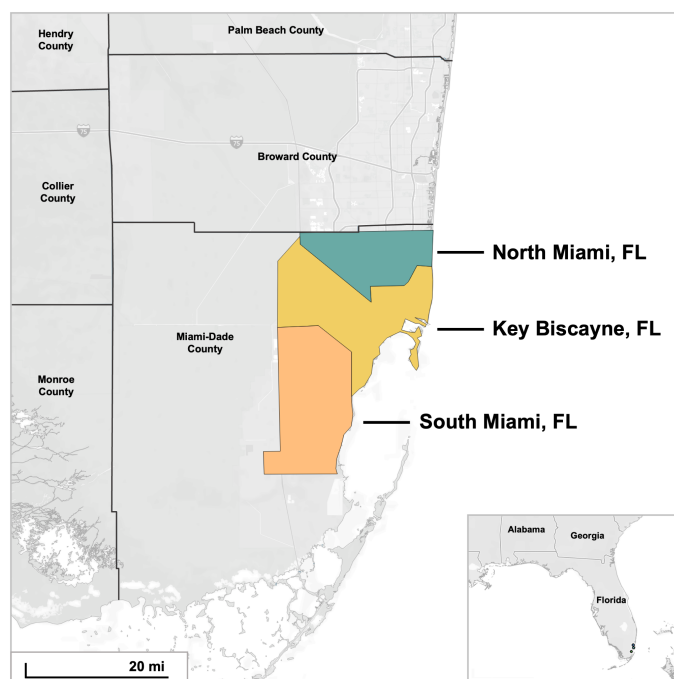
80 Given the likely feasibility and potential for public health use of wastewater monitoring for
81 dengue, we applied RT-PCR assays for DENV serotypes 1,2,3, and 4 to test wastewater solids
82 from three wastewater treatment plants during summer 2023. These sites, located in a non-
83 endemic area of the United States commonly experiencing both travel-associated and locally-

84 acquired DENV infections, provide a valuable opportunity to assess the feasibility of our
85 approach to identify DENV RNA in wastewater in an area with emerging dengue risk.

86 **Materials and Methods**

87
88
89 **Site and sample collection.** Three wastewater treatment plants (WWTPs) in Miami Dade
90 County, Florida were selected: Key Biscayne (KB), North Miami (NM), and South Miami (SM)
91 WWTPs which serve 829,725, 776,150, and 920,528 people, respectively (Figure 1). The
92 county regularly records the highest numbers of dengue cases in the United States outside of
93 non-mainland US territories such as Puerto Rico and the US Virgin Islands.^{30,31} Fifty milliliters of
94 24-hour composite raw wastewater influent samples were collected using sterile containers by
95 WWTP staff approximately three times per week between 29 June 2023 and 27 September
96 2023. Samples were sent at 4°C to the laboratory where they were processed immediately.
97 Time between sample collection and receipt at the lab was typically between 1-3 days, during
98 this time, we expect limited degradation of the RNA targets³². A total of 112 unique samples
99 were processed. At the lab, the wastewater solids were collected from the influent by settling for
100 10–15 min, and using a serological pipette to aspirate the settled solids into another tube.

101
102



103
104 **Figure 1. Map of the three sewersheds from which wastewater solids were processed in this**
105 **study. The border of Miami-Dade County, Florida is shown as well as adjacent counties.**

106
107
108
109
110 **Assay specificity and sensitivity testing.** We used a previous developed set of hydrolysis-
111 probe RT-PCR assays for DENV Types 1, 2, 3, and 4³³. To ensure their specificity and

112 sensitivity to the intended targets, we tested the assays in silico and in vitro against viral panels
 113 and nucleic-acids from the different DENV types (Table 1). For in silico analysis, DENV 1, 2, 3,
 114 and 4 genomes were downloaded from NCBI on 6 October 2022.
 115

116 **Table 1. Viruses considered in this study and the region of the genome that each assay targeted.**
 117 **Viruses used to test specificity are indicated as “non target testing” and viruses used positive**
 118 **controls are indicated as “target testing”. All non-target controls panels are sold by Zeptomatrix**
 119 **(panels begin with NAT prefix, “Zepto”, Buffalo, NY). ATCC is American Type Culture Collection.**
 120 **ATCC products are synthetic RNA. The NATRVP2.1-BIO panel includes chemically inactivated**
 121 **intact influenza viruses, parainfluenza viruses, adenovirus, rhinovirus, metapneumovirus, and**
 122 **coronaviruses. The NATEVP-C panel includes chemically inactivated intact coxsackieviruses,**
 123 **echovirus, and parechovirus. The full list of species in the panels is available from the vendor.**

Virus	Genomic target	Non-target testing (negatives)	Target testing (positives)
Dengue Type 1 (DEN-1)	NS5	NATRVP2.1-BIO NATEVP-C Dengue Serotypes 2, 3, and 4 (ATCC VR-3229SD, VR-3230SD and VR-3231SD)	Dengue Type 1 (ATCC VR-3228SD)
Dengue Type 2 (DEN-2)	E gene	NATRVP2.1-BIO NATEVP-C Dengue Serotypes 1, 3, and 4 (ATCC VR-3228SD, VR-3230SD and VR-3231SD)	Dengue Type 2 (ATCC VR-3229SD)
Dengue Type 3 (DEN-3)	prM	NATRVP2.1-BIO NATEVP-C Dengue Serotypes 1, 2 and 4 (ATCC VR-3228SD, VR-3229SD, and VR-3231SD)	Dengue Type 3 (ATCC VR-3230SD)
Dengue Type 4 (DEN-4)	prM	NATRVP2.1-BIO NATEVP-C Dengue Type 1, 2, and 3 (ATCC VR-3228SD, VR-3229SD, and ATCC VR-3230SD)	Dengue Type 4 (ATCC VR-3231SD)

124
 125 **Solids pre-analytical methods.** Samples were further dewatered by centrifugation, and
 126 dewatered solids were suspended in DNA/RNA Shield (Zymo Research, Irvine, CA) at a
 127 concentration of 0.75 mg (wet weight)/ml. The DNA/RNA shield was spiked with bovine
 128 coronavirus (BCoV) vaccine as a RNA recovery control. This concentration of solids in buffer
 129 has been shown to alleviate inhibition in downstream RT-PCR ³⁴. A separate aliquot of
 130 dewatered solids was dried in an oven to determine dry weight. RNA was extracted from 6

131 replicate aliquots of dewatered settled solids suspended in the DNA/RNA Shield, and then it
132 was subsequently processed through an inhibitor removal kit (see SI). The pre-analytical
133 methods are also provided on protocols.io³⁴.

134

135 **Digital droplet RT-PCR analytical methods.** Each replicate RNA extract from each sample (6
136 per sample) was subsequently processed immediately to measure viral RNA concentrations
137 using digital RT-PCR. We quantified the number of copies of DENV Types 1, 2, 3, and 4
138 (hereafter, D-1, D-2, D-3, and D-4) using the previously established assays (Table 2). The four
139 assays were run in multiplex using the probe-mixing approach; probes were labeled with one of
140 four fluorescent molecules as follows: D-1 (FAM, 6-fluorescein amidite), D-2 (FAM), D-3 (ROX,
141 carboxyrhodamine), and D-4 (ATTO590) except that between 27 July and 27 September 2023,
142 D-1 was labeled with HEX. Note this means that concentrations of D-1 and D-2 are only
143 available in aggregate until 27 July 2023; as discussed below, this is inconsequential since all
144 values were non-detect for these targets. We also measured concentrations of pepper mild
145 mottle virus (PMMoV) RNA; PMMoV is highly abundant in wastewater globally³⁵ and is used as
146 an internal recovery and fecal strength control³⁶. We also measured concentrations of BCoV
147 RNA. Further details of the RT-PCR including cycling conditions, ingredients, replication,
148 positive and negative controls, as well as thresholding, are in the SI. Primer/probe sequences
149 are in Table 2. In order for a sample to be recorded as positive, it had to have at least 3 positive
150 droplets.

151

152
153
154
155
156
157
158
159

Table 2. Primer and hydrolysis probes targeting different Dengue serotypes. The primers and probes were published by Santiago et al.³³ as reported in Table 1 labeled as “CDCDENV-1–4RealTimeRT-PCR”. Each probe contained a fluorescent molecular (FAM, HEX< ROX, or ATTO590), as well as ZEN, a proprietary internal quencher from IDT; and IBFQ, Iowa Black FQ. Note that unit 26 July 2023, Dengue Type 1 probe was used with a FAM molecule instead of HEX.

Target		Sequence
Dengue Type 1	Forward	CAAAAGGAAGTCGYGCAATA
	Reverse	CTGAGTGAATTCTCTCTGCTRAAC
	Probe	CATGTGGYTGGGAGCRCGC
Dengue Type 2	Forward	CAGGCTATGGCACYGTCACGAT
	Reverse	CCATYTGAGCARGACCATCTC
	Probe	CTCYCCRAGAACGGGCTCGACTTCAA
Dengue Type 3	Forward	GGACTRGACACACGCACCCA
	Reverse	CATGTCTCTACCTTCTCGACTTGYCT
	Probe	ACCTGGATGTCGGCTGAAGGAGCTTG
Dengue Type 4	Forward	TTGTCCTAATGATGCTRGTCG
	Reverse	TCCACCYGAGACTCCTTCCA
	Probe	TYCCTACYCCTACGCATCGCATTCCG

160
161
162
163
164
165
166
167
168

Concentrations of RNA targets were converted to concentrations per dry weight of solids (copies per gram dry weight (cp/g)) using dimensional analysis. The error is reported as standard deviations and includes the errors associated with the Poisson distribution and the variability among the replicates. Three positive droplets across 10 merged wells corresponds to a concentration ~500 cp/g for solids, respectively). Concentrations of DENV RNA in the samples are available through the Stanford Digital Repository (<https://doi.org/10.25740/bn739zz5683>).

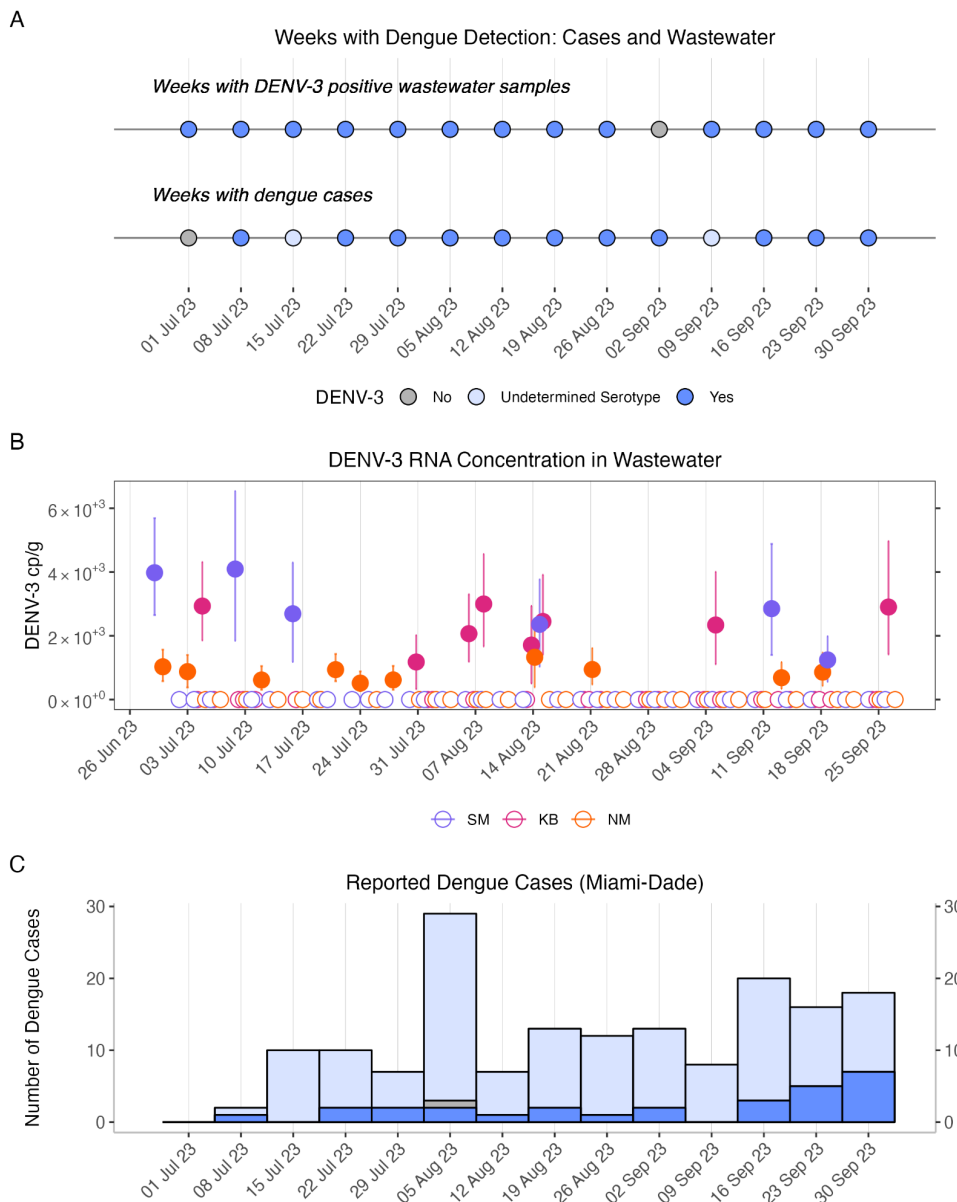
169
170 **Dengue Case Surveillance.** Data for dengue case detection and subtyping was obtained from
171 the Florida Health Department weekly arbovirus report, which are publicly available.³⁷ Dengue is
172 a reportable disease in Florida, and practitioners are required to report upon suspicion and
173 ordering of laboratory tests.³⁸ Both confirmed and probable dengue cases are counted in Florida
174 residents and non-resident visitors to the state. Serotyping is based on PCR-confirmation.
175 State- and county-aggregated incident case data were digitized from the weekly reports for the
176 study period (18 June 2023 - 30 September 2023; MMWR weeks 25-39). Data on the specific
177 DENV serotype responsible for each incident case are available for only state-aggregated,
178 travel-associated cases, and county-aggregated locally-acquired cases.

179 180 **Results and Discussion**

181
182 **QA/QC.** Previously designed DENV assays for four DENV serotypes were found to be both
183 specific and sensitive, able to detect their intended targets with no cross reactivity. Negative and
184 positive extraction and PCR controls on all plates used for environmental sample testing were
185 negative and positive. BCoV recoveries and PMMoV values indicate median recoveries close to
186 100%, and stable PMMoV between and within WWTPs (see supporting information, SI). This
187 suggests DENV RNA concentrations can be compared over time and between WWTPs as they
188 have similar high recoveries and consistent fecal strength. Additional details related to the
189 Environmental Microbiology Minimal Information (EMMI) guidelines are in the SI (Table S1).

190
191 When these assays were applied prospectively to samples of wastewater solids obtained from
192 three WWTPs in a location in the United States with increasing concerns about local dengue
193 transmission, we found that DENV serotype 3 (DENV-3) RNA was consistently detected during
194 a time period when both travel-associated and locally-acquired cases of dengue were identified
195 in the county (Figure 2). DENV-3 RNA was detected in 24 of 112 (21%) samples from all three
196 WWTP sites. DENV-3 RNA concentrations ranged from below the detection limit (~500
197 copies(cp)/gram wastewater solids) to a maximum of 4.1×10^3 cp/g (median = nondetect). All
198 wastewater samples were non-detect for DENV-1, -2, and -4 RNA. During the study period,
199 there was at least one sample positive for DENV-3 from a Miami-Dade site from 13 of 14 weeks
200 (Figure S1,). A description of sampling dates and rates of detection for individual sites are
201 available in Table S2.

202
203



204
205
206
207
208
209
210
211
212
213
214
215
216
217

Figure 2. Detection of DENV-3 RNA in wastewater and reported dengue cases in Miami-Dade County. A: Weeks during the study period with detection of DENV-3 in wastewater at any of the three sites (top) and weeks with dengue cases identified in Miami-Dade county (bottom) B: Concentrations of DENV-3 RNA in each sample processed in this study. Errors represent standard deviations on the measurement. KB is Key Biscayne, NM is North Miami, and SM is South Miami WWTPs. C: Dengue cases reported in Miami-Dade county, from Florida Arbovirus Weekly Reports. Overall bar height represents the total number of cases per MMWR week for both travel-associated and locally-acquired cases. Colors represent available information on serotyping. Locally-acquired cases were serotyped and confirmed DENV-3 cases are shown in dark blue and other serotypes in grey; the remaining travel-associated cases where serotype was not provided are shown in light blue.

218

219 Although the three WWTPs do not cover the entire geographic area of the county, they are
220 estimated to serve 95% of the county's population and therefore it is likely that most recorded
221 cases are within the sampled sewersheds (2.5 million people served, total Miami-Dade
222 population 2.6 million). During the study period, there were 165 incident cases of DEN reported
223 in Miami-Dade County (132 travel-associated, 33 locally acquired). Serotyping information was
224 not provided for travel-associated cases in the county, however 71% (166/234) of travel-
225 associated cases state-wide were serotyped as DENV-3. For the 33 locally-acquired cases of
226 dengue, 28 (85%) were positively identified as DENV-3. One case was positively identified as
227 DENV-2 (3%) and the other four cases were of unknown serotype (12%). The median number
228 of incident dengue cases per week was 11 (range = 0-29), and median incident cases with a
229 confirmed DENV-3 serotype was 2 (range = 0-7). Although serotype was not provided for the
230 majority of cases, rates of DENV-3 statewide suggest it accounts for the majority of cases.
231 Depending on whether only confirmed DENV-3 or all dengue cases are considered, wastewater
232 results show detection of DENV-3 in a population with an estimated weekly incidence rate of
233 0.77 - 4.23 cases/ 1 million people, respectively.

234

235 Because a large proportion of people infected with DENV for the first time may be asymptomatic
236 or mildly symptomatic and not seek care, and because the disease is rare in the United States
237 and may not be easily recognizable to clinicians, dengue surveillance is not expected to capture
238 all cases.^{6,39,40} Therefore the case surveillance data described here is likely an underestimate of
239 both travel-associated and locally-acquired infections, and may also be incomplete due to
240 reporting delays.⁴¹ Nonetheless, results show that DENV-3 RNA is detectable in wastewater in
241 an emerging region with a low incidence rate and limited local transmission.

242

243 Wastewater has been considered to supplement DENV surveillance in part due to a focus on
244 sentinel surveillance to identify nascent outbreaks, as the success of mitigation efforts, including
245 vector control, depends on rapid response.^{15,42,43} Current dengue surveillance includes both
246 case reporting, which will not capture individuals who are not diagnosed due to subclinical
247 infections or missed diagnosis, and mosquito surveillance, which is time and resource intensive.
248 A recent meta-analysis suggests that the prevalence of asymptomatic dengue infections overall
249 was 59.26% (95% CI: 43.76-74.75, I² = 99.93%), and other work shows that they are
250 infectious.^{39,40} Despite documented cases of local transmission during the study time period,
251 concurrent mosquito surveillance in Miami-Dade county showed consistent capture of *Ae.*
252 *aegypti* without any mosquito testing positive for DENV [personal communication, Dr. Isik Unlu,
253 Miami-Dade County]. In cases like this, wastewater provides an opportunity to sample at the
254 population level to supplement and sustain sentinel surveillance for DENV in human populations
255 by indicating the likely presence of human cases.^{8,9} Note that while there is some chance that
256 mosquitoes could appear in wastewater and contribute to detection, this would still be a valid
257 indicator of community presence of the disease (although DENV is not transmissible to humans
258 through wastewater, as it requires the mosquito vector).

259

260 This work suggests that monitoring for DENV in wastewater is feasible at low levels of incidence
261 and in emerging regions, and therefore could be a valuable addition to dengue surveillance

262 programs. Previous studies have not successfully detected DENV in natural wastewaters¹⁷. A
263 difference in this study is the use of solids, many previous studies focus on analysis of the liquid
264 phase. Other work has shown that many viruses are found in concentrations several orders of
265 magnitude higher in wastewater solids^{44–48}. To better understand and utilize results, more work
266 is needed to characterize DENV shedding and persistence and partitioning in wastewater and to
267 characterize the relationship between measured concentrations of DENV RNA in wastewater
268 and infections in the community. Current wastewater methods cannot distinguish between
269 locally-acquired and travel-associated cases, information that is critical to understanding the
270 scope of outbreaks and risk to the community.

271
272 **Supporting Information.** Additional methodological details as well as Tables S1-S2 and Figures S1-
273 S3.

274
275 **Acknowledgements.** We acknowledge the staff at the three Miami-Dade County wastewater
276 treatment plants for sample collection, as well as local health department professionals Isik
277 Unlu, Samir Elmir, Yesenia Villalta, Ian Stryker, Andrea Morrison, and Daneille Stanek for their
278 feedback on and contributions to the project.

279

280

281 References

- 282 (1) Girard, M.; Nelson, C. B.; Picot, V.; Gubler, D. J. Arboviruses: A Global Public Health
283 Threat. *Vaccine* **2020**, *38* (24), 3989–3994. <https://doi.org/10.1016/j.vaccine.2020.04.011>.
- 284 (2) Gubler, D. J. The Global Emergence/Resurgence of Arboviral Diseases As Public Health
285 Problems. *Archives of Medical Research* **2002**, *33* (4), 330–342.
286 [https://doi.org/10.1016/S0188-4409\(02\)00378-8](https://doi.org/10.1016/S0188-4409(02)00378-8).
- 287 (3) Wilder-Smith, A.; Gubler, D. J.; Weaver, S. C.; Monath, T. P.; Heymann, D. L.; Scott, T. W.
288 Epidemic Arboviral Diseases: Priorities for Research and Public Health. *The Lancet*
289 *Infectious Diseases* **2017**, *17* (3), e101–e106. [https://doi.org/10.1016/S1473-](https://doi.org/10.1016/S1473-3099(16)30518-7)
290 [3099\(16\)30518-7](https://doi.org/10.1016/S1473-3099(16)30518-7).
- 291 (4) *Vector-borne diseases*. [https://www.who.int/news-room/fact-sheets/detail/vector-borne-](https://www.who.int/news-room/fact-sheets/detail/vector-borne-diseases)
292 [diseases](https://www.who.int/news-room/fact-sheets/detail/vector-borne-diseases) (accessed 2023-10-01).
- 293 (5) Gould, E.; Pettersson, J.; Higgs, S.; Charrel, R.; de Lamballerie, X. Emerging Arboviruses:
294 Why Today? *One Health* **2017**, *4*, 1–13. <https://doi.org/10.1016/j.onehlt.2017.06.001>.
- 295 (6) Bhatt, S.; Gething, P. W.; Brady, O. J.; Messina, J. P.; Farlow, A. W.; Moyes, C. L.; Drake,
296 J. M.; Brownstein, J. S.; Hoen, A. G.; Sankoh, O.; Myers, M. F.; George, D. B.; Jaenisch, T.;
297 Wint, G. R. W.; Simmons, C. P.; Scott, T. W.; Farrar, J. J.; Hay, S. I. The Global Distribution
298 and Burden of Dengue. *Nature* **2013**, *496* (7446), 504–507.
299 <https://doi.org/10.1038/nature12060>.
- 300 (7) *Dengue and severe dengue*. [https://www.who.int/news-room/fact-sheets/detail/dengue-and-](https://www.who.int/news-room/fact-sheets/detail/dengue-and-severe-dengue)
301 [severe-dengue](https://www.who.int/news-room/fact-sheets/detail/dengue-and-severe-dengue) (accessed 2023-10-16).
- 302 (8) Boehm, A. B.; Hughes, B.; Duong, D.; Chan-Herur, V.; Buchman, A.; Wolfe, M. K.; White, B.
303 J. Wastewater Concentrations of Human Influenza, Metapneumovirus, Parainfluenza,
304 Respiratory Syncytial Virus, Rhinovirus, and Seasonal Coronavirus Nucleic-Acids during the
305 COVID-19 Pandemic: A Surveillance Study. *The Lancet Microbe* **2023**, *4* (5).
306 [https://doi.org/10.1016/S2666-5247\(22\)00386-X](https://doi.org/10.1016/S2666-5247(22)00386-X).
- 307 (9) Peccia, J.; Zulli, A.; Brackney, D. E.; Grubaugh, N. D.; Kaplan, E. H.; Casanovas-Massana,
308 A.; Ko, A. I.; Malik, A. A.; Wang, D.; Wang, M.; Warren, J. L.; Weinberger, D. M.; Omer, S.
309 B. *SARS-CoV-2 RNA Concentrations in Primary Municipal Sewage Sludge as a Leading*
310 *Indicator of COVID-19 Outbreak Dynamics*; preprint; *Epidemiology*, 2020.
311 <https://doi.org/10.1101/2020.05.19.20105999>.
- 312 (10) Wolfe, M. K.; Yu, A. T.; Duong, D.; Rane, M. S.; Hughes, B.; Chan-Herur, V.; Donnelly,
313 M.; Chai, S.; White, B. J.; Vugia, D. J.; Boehm, A. B. Use of Wastewater for Mpox Outbreak
314 Surveillance in California. *New England Journal of Medicine* **2023**, *388* (6), 570–572.
315 <https://doi.org/10.1056/NEJMc2213882>.
- 316 (11) Boehm, A. B.; Wolfe, M. K.; White, B. J.; Hughes, B.; Duong, D.; Banaei, N.; Bidwell, A.
317 Human Norovirus (HuNoV) GII RNA in Wastewater Solids at 145 United States Wastewater
318 Treatment Plants: Comparison to Positivity Rates of Clinical Specimens and Modeled
319 Estimates of HuNoV GII Shedders. *J Expo Sci Environ Epidemiol* **2023**, 1–8.
320 <https://doi.org/10.1038/s41370-023-00592-4>.
- 321 (12) Boehm, A. B.; Hughes, B.; Duong, D.; Banaei, N.; White, B. J.; Wolfe, M. K. A
322 Retrospective Longitudinal Study of Adenovirus Group F, Norovirus GI and GII, Rotavirus,
323 and Enterovirus Nucleic-Acids in Wastewater Solids at Two Wastewater Treatment Plants:
324 Solid-Liquid Partitioning and Relation to Clinical Testing Data. medRxiv August 31, 2023, p
325 2023.08.29.23294748. <https://doi.org/10.1101/2023.08.29.23294748>.
- 326 (13) Wolfe, M. K.; Topol, A.; Knudson, A.; Simpson, A.; White, B.; Vugia, D. J.; Yu, A. T.; Li,
327 L.; Balliet, M.; Stoddard, P.; Han, G. S.; Wigginton, K. R.; Boehm, A. B. High-Frequency,
328 High-Throughput Quantification of SARS-CoV-2 RNA in Wastewater Settled Solids at Eight
329 Publicly Owned Treatment Works in Northern California Shows Strong Association with

- 330 COVID-19 Incidence. *mSystems* 6 (5), e00829-21.
331 <https://doi.org/10.1128/mSystems.00829-21>.
- 332 (14) Wolfe, M. K.; Duong, D.; Bakker, K. M.; Ammerman, M.; Mortenson, L.; Hughes, B.; Arts,
333 P.; Luring, A. S.; Fitzsimmons, W. J.; Bendall, E.; Hwang, C. E.; Martin, E. T.; White, B. J.;
334 Boehm, A. B.; Wigginton, K. R. Wastewater-Based Detection of Two Influenza Outbreaks.
335 *Environ. Sci. Technol. Lett.* **2022**, 9 (8), 687–692.
336 <https://doi.org/10.1021/acs.estlett.2c00350>.
- 337 (15) Lwande, O. W.; Obanda, V.; Lindström, A.; Ahlm, C.; Evander, M.; Näslund, J.; Bucht,
338 G. Globe-Trotting *Aedes Aegypti* and *Aedes Albopictus*: Risk Factors for Arbovirus
339 Pandemics. *Vector-Borne and Zoonotic Diseases* **2020**, 20 (2), 71–81.
340 <https://doi.org/10.1089/vbz.2019.2486>.
- 341 (16) Lee, W. L.; Gu, X.; Armas, F.; Leifels, M.; Wu, F.; Chandra, F.; Chua, F. J. D.; Syenina,
342 A.; Chen, H.; Cheng, D.; Ooi, E. E.; Wuertz, S.; Alm, E. J.; Thompson, J. Monitoring Human
343 Arboviral Diseases through Wastewater Surveillance: Challenges, Progress and Future
344 Opportunities. *Water Research* **2022**, 223, 118904.
345 <https://doi.org/10.1016/j.watres.2022.118904>.
- 346 (17) Thakali, O.; Raya, S.; Malla, B.; Tandukar, S.; Tiwari, A.; Sherchan, S. P.; Sherchand, J.
347 B.; Haramoto, E. Pilot Study on Wastewater Surveillance of Dengue Virus RNA: Lessons,
348 Challenges, and Implications for Future Research. *Environmental Challenges* **2022**, 9,
349 100614. <https://doi.org/10.1016/j.envc.2022.100614>.
- 350 (18) Hirayama, T.; Mizuno, Y.; Takeshita, N.; Kotaki, A.; Tajima, S.; Omatsu, T.; Sano, K.;
351 Kurane, I.; Takasaki, T. Detection of Dengue Virus Genome in Urine by Real-Time Reverse
352 Transcriptase PCR: A Laboratory Diagnostic Method Useful after Disappearance of the
353 Genome in Serum. *J Clin Microbiol* **2012**, 50 (6), 2047–2052.
354 <https://doi.org/10.1128/JCM.06557-11>.
- 355 (19) Andries, A.-C.; Duong, V.; Ly, S.; Cappelle, J.; Kim, K. S.; Lorn Try, P.; Ros, S.; Ong, S.;
356 Huy, R.; Horwood, P.; Flamand, M.; Sakuntabhai, A.; Tarantola, A.; Buchy, P. Value of
357 Routine Dengue Diagnostic Tests in Urine and Saliva Specimens. *PLoS Negl Trop Dis*
358 **2015**, 9 (9), e0004100. <https://doi.org/10.1371/journal.pntd.0004100>.
- 359 (20) Humaidi, M.; Tien, W. P.; Yap, G.; Chua, C. R.; Ng, L. C. Non-Invasive Dengue
360 Diagnostics—The Use of Saliva and Urine for Different Stages of the Illness. *Diagnostics*
361 (*Basel*) **2021**, 11 (8), 1345. <https://doi.org/10.3390/diagnostics11081345>.
- 362 (21) Poloni, T. R.; Oliveira, A. S.; Alfonso, H. L.; Galvão, L. R.; Amarilla, A. A.; Poloni, D. F.;
363 Figueiredo, L. T.; Aquino, V. H. Detection of Dengue Virus in Saliva and Urine by Real Time
364 RT-PCR. *Virology* **2010**, 7, 22. <https://doi.org/10.1186/1743-422X-7-22>.
- 365 (22) Van den Bossche, D.; Cnops, L.; Van Esbroeck, M. Recovery of Dengue Virus from
366 Urine Samples by Real-Time RT-PCR. *Eur J Clin Microbiol Infect Dis* **2015**, 34 (7), 1361–
367 1367. <https://doi.org/10.1007/s10096-015-2359-0>.
- 368 (23) Ma, X.; Zhen, W.; Yang, P.; Sun, X.; Nie, W.; Zhang, L.; Xu, H.; Hu, K. First Confirmation
369 of Imported Dengue Virus Serotype 2 Complete Genome in Urine from a Chinese Traveler
370 Returning from India. *Virology* **2014**, 11 (1), 56. <https://doi.org/10.1186/1743-422X-11-56>.
- 371 (24) Mizuno, Y.; Kotaki, A.; Harada, F.; Tajima, S.; Kurane, I.; Takasaki, T. Confirmation of
372 Dengue Virus Infection by Detection of Dengue Virus Type 1 Genome in Urine and Saliva
373 but Not in Plasma. *Transactions of The Royal Society of Tropical Medicine and Hygiene*
374 **2007**, 101 (7), 738–739. <https://doi.org/10.1016/j.trstmh.2007.02.007>.
- 375 (25) Bôtto-Menezes, C. H. A.; Neto, A. M.; Calvet, G. A.; Kara, E. O.; Lacerda, M. V. G.;
376 Castilho, M. da C.; Ströher, U.; Antunes de Brito, C. A.; Modjarrad, K.; Broutet, N.; Brasil, P.;
377 Bispo de Filippis, A. M.; Franca, R. F. O.; ZIKABRA Study Team. Zika Virus in Rectal Swab
378 Samples. *Emerg Infect Dis* **2019**, 25 (5), 951–954. <https://doi.org/10.3201/eid2505.180904>.
- 379 (26) Menezes-Neto, A.; Castilho, M. da C.; Calvet, G. A.; Kara, E. O.; Bôtto-Menezes, C. H.
380 A.; Lacerda, M. V. G.; Pereira, G. F. M.; Giozza, S. P.; Bermudez, X. P. D.; Lima, N. S.;

- 381 Modjarrad, K.; Broutet, N.; de Filippis, A. M. B.; Franca, R. F. O. Zika Virus RNA Excretion
382 in Sweat with Concomitant Detection in Other Body Fluid Specimens. *Mem. Inst. Oswaldo*
383 *Cruz* **2021**, *115*, e200339. <https://doi.org/10.1590/0074-02760200339>.
- 384 (27) Chandra, F.; Armas, F.; Kwok, G.; Chen, H.; Desmond Chua, F. J.; Leifels, M.; Amir-
385 Hamzah, N.; Gu, X.; Wuertz, S.; Lee, W. L.; Alm, E. J.; Thompson, J. Comparing Recovery
386 Methods for Wastewater Surveillance of Arthropod-Borne and Enveloped Viruses. *ACS EST*
387 *Water* **2023**, *3* (4), 974–983. <https://doi.org/10.1021/acsestwater.2c00460>.
- 388 (28) Chandra, F.; Lee, W. L.; Armas, F.; Leifels, M.; Gu, X.; Chen, H.; Wuertz, S.; Alm, E. J.;
389 Thompson, J. Persistence of Dengue (Serotypes 2 and 3), Zika, Yellow Fever, and Murine
390 Hepatitis Virus RNA in Untreated Wastewater. *Environ. Sci. Technol. Lett.* **2021**, *8* (9), 785–
391 791. <https://doi.org/10.1021/acs.estlett.1c00517>.
- 392 (29) Chen, K.-W.; Chen, T.-Y.; Wang, S.-T.; Hou, T.-Y.; Wang, S.-W.; Young, K.-C.
393 Establishment of Quantitative and Recovery Method for Detection of Dengue Virus in
394 Wastewater with Noncognate Spike Control. *Journal of Virological Methods* **2023**, *314*,
395 114687. <https://doi.org/10.1016/j.jviromet.2023.114687>.
- 396 (30) *Current Year Data (2023) | Dengue | CDC*. [https://www.cdc.gov/dengue/statistics-](https://www.cdc.gov/dengue/statistics-maps/current-data.html)
397 [maps/current-data.html](https://www.cdc.gov/dengue/statistics-maps/current-data.html) (accessed 2023-10-16).
- 398 (31) *Historic Data (2010-2022) | Dengue | CDC*. [https://www.cdc.gov/dengue/statistics-](https://www.cdc.gov/dengue/statistics-maps/historic-data.html)
399 [maps/historic-data.html](https://www.cdc.gov/dengue/statistics-maps/historic-data.html) (accessed 2023-10-16).
- 400 (32) Simpson, A.; Topol, A.; White, B.; Wolfe, M. K.; Wigginton, K.; Boehm, A. B. Effect of
401 Storage Conditions on SARS-CoV-2 RNA Quantification in Wastewater Solids. *PeerJ* **2021**,
402 *9*, e11933. <https://doi.org/10.7717/peerj.11933>.
- 403 (33) Santiago, G. A.; Vergne, E.; Quiles, Y.; Cosme, J.; Vazquez, J.; Medina, J. F.; Medina,
404 F.; Colón, C.; Margolis, H.; Muñoz-Jordán, J. L. Analytical and Clinical Performance of the
405 CDC Real Time RT-PCR Assay for Detection and Typing of Dengue Virus. *PLOS Neglected*
406 *Tropical Diseases* **2013**, *7* (7), e2311. <https://doi.org/10.1371/journal.pntd.0002311>.
- 407 (34) Boehm, A. B.; Wolfe, M. K.; Wigginton, K. R.; Bidwell, A.; White, B. J.; Hughes, B.;
408 Duong; Chan-Herur, V.; Bischel, H. N.; Naughton, C. C. Human Viral Nucleic Acids
409 Concentrations in Wastewater Solids from Central and Coastal California USA. *Scientific*
410 *Data* **2023**, *10*, 396.
- 411 (35) Symonds, E. M.; Nguyen, K. H.; Harwood, V. J.; Breitbart, M. Pepper Mild Mottle Virus:
412 A Plant Pathogen with a Greater Purpose in (Waste)Water Treatment Development and
413 Public Health Management. *Water Research* **2018**, *144*, 1–12.
414 <https://doi.org/10.1016/j.watres.2018.06.066>.
- 415 (36) McClary-Gutierrez, J. S.; Aanderud, Z. T.; Al-faliti, M.; Duvallet, C.; Gonzalez, R.;
416 Guzman, J.; Holm, R. H.; Jahne, M. A.; Kantor, R. S.; Katsivelis, P.; Kuhn, K. G.; Langan, L.
417 M.; Mansfeldt, C.; McLellan, S. L.; Mendoza Grijalva, L. M.; Murnane, K. S.; Naughton, C.
418 C.; Packman, A. I.; Paraskevopoulos, S.; Radniecki, T. S.; Roman, F. A.; Shrestha, A.;
419 Stadler, L. B.; Steele, J. A.; Swalla, B. M.; Vikesland, P.; Wartell, B.; Wilusz, C. J.; Wong, J.
420 C. C.; Boehm, A. B.; Halden, R. U.; Bibby, K.; Delgado Vela, J. Standardizing Data
421 Reporting in the Research Community to Enhance the Utility of Open Data for SARS-CoV-2
422 Wastewater Surveillance. *Environ. Sci.: Water Res. Technol.* **2021**, *7* (9), 1545–1551.
423 <https://doi.org/10.1039/D1EW00235J>.
- 424 (37) *Mosquito-Borne Disease Surveillance | Florida Department of Health*.
425 [https://www.floridahealth.gov/diseases-and-conditions/mosquito-borne-](https://www.floridahealth.gov/diseases-and-conditions/mosquito-borne-diseases/surveillance.html)
426 [diseases/surveillance.html](https://www.floridahealth.gov/diseases-and-conditions/mosquito-borne-diseases/surveillance.html) (accessed 2023-10-03).
- 427 (38) *Disease Reporting Information for Health Care and Laboratory Providers | Florida*
428 *Department of Health*. [https://www.floridahealth.gov/diseases-and-conditions/disease-](https://www.floridahealth.gov/diseases-and-conditions/disease-reporting-and-management/)
429 [reporting-and-management/](https://www.floridahealth.gov/diseases-and-conditions/disease-reporting-and-management/) (accessed 2023-10-17).
- 430 (39) Asish, P. R.; Dasgupta, S.; Rachel, G.; Bagepally, B. S.; Kumar, C. P. G. Global
431 Prevalence of Asymptomatic Dengue Infections - a Systematic Review and Meta-Analysis.

- 432 *International Journal of Infectious Diseases* **2023**, *134*, 292–298.
433 <https://doi.org/10.1016/j.ijid.2023.07.010>.
- 434 (40) Bosch, Q. A. ten; Clapham, H. E.; Lambrechts, L.; Duong, V.; Buchy, P.; Althouse, B. M.;
435 Lloyd, A. L.; Waller, L. A.; Morrison, A. C.; Kitron, U.; Vazquez-Prokopec, G. M.; Scott, T.
436 W.; Perkins, T. A. Contributions from the Silent Majority Dominate Dengue Virus
437 Transmission. *PLOS Pathogens* **2018**, *14* (5), e1006965.
438 <https://doi.org/10.1371/journal.ppat.1006965>.
- 439 (41) Jing, Q.; Li, Y.; Liu, J.; Jiang, L.; Chen, Z.; Su, W.; Birkhead, G. S.; Lu, J.; Yang, Z.
440 Dengue Underestimation in Guangzhou, China: Evidence of Seroprevalence in
441 Communities With No Reported Cases Before a Large Outbreak in 2014. *Open Forum*
442 *Infectious Diseases* **2019**, *6* (7), ofz256. <https://doi.org/10.1093/ofid/ofz256>.
- 443 (42) Beckham, J. D.; Tyler, K. L. Arbovirus Infections. *Continuum (Minneapolis)* **2015**, *21* (6
444 NEUROINFECTIOUS DISEASE), 1599–1611.
445 <https://doi.org/10.1212/CON.0000000000000240>.
- 446 (43) Tsheten, T.; Gray, D. J.; Clements, A. C. A.; Wangdi, K. Epidemiology and Challenges of
447 Dengue Surveillance in the WHO South-East Asia Region. *Transactions of The Royal*
448 *Society of Tropical Medicine and Hygiene* **2021**, *115* (6), 583–599.
449 <https://doi.org/10.1093/trstmh/traa158>.
- 450 (44) Ye, Y.; Ellenberg, R. M.; Graham, K. E.; Wigginton, K. R. Survivability, Partitioning, and
451 Recovery of Enveloped Viruses in Untreated Municipal Wastewater. *Environ. Sci. Technol.*
452 **2016**, *50* (10), 5077–5085. <https://doi.org/10.1021/acs.est.6b00876>.
- 453 (45) Kim, S.; Kennedy, L. C.; Wolfe, M. K.; Criddle, C. S.; Duong, D. H.; Topol, A.; White, B.
454 J.; Kantor, R. S.; Nelson, K. L.; Steele, J. A.; Langlois, K.; Griffith, J. F.; Zimmer-Faust, A.
455 G.; McLellan, S. L.; Schussman, M. K.; Ammerman, M.; Wigginton, K. R.; Bakker, K. M.;
456 Boehm, A. B. SARS-CoV-2 RNA Is Enriched by Orders of Magnitude in Primary Settled
457 Solids Relative to Liquid Wastewater at Publicly Owned Treatment Works. *Environ. Sci.:*
458 *Water Res. Technol.* **2022**. <https://doi.org/10.1039/D1EW00826A>.
- 459 (46) Yin, Z.; Voice, T.; Tarabara, V.; Xagorarakis, I. Sorption of Human Adenovirus to
460 Wastewater Solids. *Journal of Environmental Engineering* **2018**, *144* (11), 06018008.
461 [https://doi.org/10.1061/\(ASCE\)EE.1943-7870.0001463](https://doi.org/10.1061/(ASCE)EE.1943-7870.0001463).
- 462 (47) Roldan-Hernandez, L.; Boehm, A. B. Adsorption of Respiratory Syncytial Virus (RSV),
463 Rhinovirus, SARS-CoV-2, and F+ Bacteriophage MS2 RNA onto Wastewater Solids from
464 Raw Wastewater. *Environmental Science & Technology* **2023**.
- 465 (48) Zhu, K.; Hill, C.; Muirhead, A.; Basu, M.; Brown, J.; Brinton, M. A.; Hayat, M. J.;
466 Venegas-Vargas, C.; Reis, M. G.; Casanovas-Massana, A.; Meschke, J. S.; Ko, A. I.; Costa,
467 F.; Stauber, C. E. Zika Virus RNA Persistence and Recovery in Water and Wastewater: An
468 Approach for Zika Virus Surveillance in Resource-Constrained Settings. *Water Research*
469 **2023**, *241*, 120116. <https://doi.org/10.1016/j.watres.2023.120116>.
- 470
471
472
473