

1 Cholera deaths during outbreaks in Uvira, eastern Democratic 2 Republic of the Congo, 10-35 months after mass vaccination

3 Patrick Musole Bugeme^{1,2}, Hanmeng Xu¹, Chloe Hutchins³, Juan Dent Hulse¹, Jaime Mufitini Saidi⁴,
4 Baron Bashige Rumedeka^{1,4}, Moïse Itongwa¹, Joël Faraja Zigashane Mashauri¹, Faraja Masembe
5 Lulela¹, Justin Bengheya⁵, Jean-Claude Kulondwa⁵, Amanda K Debes⁶, Iza Ciglenecki⁷, Esperance
6 Tshiwedi⁸, Faïda Kitoga⁸, Tavia Bodisa-Matamu⁸, Taty Nadège⁹, Hugo Kavunga-Membo^{8,10}, Octavie
7 Lunguya¹⁰, Placide Okitayemba Welo⁹, Jackie Knee³, Daniel Mukadi-Bamuleka^{8,10}, Andrew S.
8 Azman^{1,11,12*}, Espoir Bwenge Malembaka^{1,2}

9
10 ¹Department of Epidemiology, Johns Hopkins University, Baltimore, MD 21205, USA

11 ²Centre for Tropical Diseases and Global Health (CTDGH), Université Catholique de Bukavu,
12 Bukavu, Democratic Republic of the Congo

13 ³Department of Disease Control, London School of Hygiene & Tropical Medicine, UK

14 ⁴Ministère de la Santé Publique, Division Provinciale de la Santé Publique du Sud-Kivu, Zone de
15 Santé d'Uvira, Democratic Republic of the Congo

16 ⁴Ministère de la Santé Publique, Zone de Santé d'Uvira, Democratic Republic of Congo

17 ⁵Ministère de la Santé Publique, Division Provinciale de la Santé Publique du Sud-Kivu, Democratic
18 Republic of the Congo

19 ⁶Department of International Health, Johns Hopkins University, Baltimore, MD 21205, USA

20 ⁷Médecins Sans Frontières, 1202 Geneva, Switzerland

21 ⁸Rodolphe Merieux INRB-Goma Laboratory, Goma, North-Kivu, Democratic Republic of the Congo

22 ⁹Programme National d'Élimination de Choléra et lutte contre les autres Maladies 19 Diarrhéiques
23 (PNECHOL-MD), Kinshasa, Democratic Republic of the Congo

24 ¹⁰Institut National de Recherche Biomédicale, INRB, Kinshasa, Democratic Republic of the Congo

25 ¹¹Geneva Centre for Emerging Viral Diseases, Geneva University Hospitals (HUG), Geneva,
26 Switzerland

27 ¹²Division of Tropical and Humanitarian Medicine, Geneva University Hospitals (HUG), Geneva,
28 Switzerland

29

30 *Corresponding author:

31 Andrew S. Azman (azman@jhu.edu)

32

33 Department of Epidemiology, Johns Hopkins Bloomberg School of Public Health,
34 Johns Hopkins University, Baltimore, MD 21205, USA

35 Geneva Centre for Emerging Viral Diseases, Geneva University Hospitals (HUG), Geneva,
36 Switzerland

37 Division of Tropical and Humanitarian Medicine, Geneva University Hospitals (HUG),
38 Geneva, Switzerland

39

40 Target journal: Open Forum Infectious Diseases:

41 https://academic.oup.com/ofid/pages/Submission_Online?login=true

42

2

43 **Abstract**

44 Our understanding of the burden and drivers of cholera mortality is hampered by limited
45 surveillance and confirmation capacity. Leveraging enhanced clinical and laboratory
46 surveillance in the cholera-endemic community of Uvira, eastern Democratic Republic of
47 Congo, we describe cholera deaths across three epidemics between September 2021-
48 September 2023, following mass vaccination.

49

50

51

52

53

54

55

56

57

58

59

60

61 Cholera is an acute diarrheal disease that can rapidly cause severe dehydration and death
62 without prompt and aggressive rehydration[1]. Estimates of the true burden of cholera are
63 highly uncertain because surveillance systems often lack routine identification and testing of
64 suspected cases, and documentation of community cases and deaths is limited. In resource-
65 constrained settings, passive, facility-based surveillance data on mortality are likely to
66 underestimate true mortality; contributing factors include limited patient access to health
67 facilities and incentives for under-reporting[2–5]. Additionally, limited access to
68 confirmatory laboratories for cases and deaths may lead to distorted estimates of the true
69 cholera mortality, both at local and global levels[6]. In the city of Uvira in South Kivu
70 [eastern Democratic Republic of the Congo (DRC)], we implemented an enhanced cholera
71 surveillance system as part of an impact evaluation of preventive mass oral cholera
72 vaccination campaigns conducted in 2020. The killed oral cholera vaccine (kOCV) Euvichol-
73 plus was administered to individuals ≥ 12 months old living in Uvira in two mass campaigns
74 conducted in July-August and October 2020. Here, we describe cholera deaths across three
75 cholera epidemics in the first three years after vaccination (Figure).

76 **Methods**

77 Between September 1, 2021 – September 30, 2023 (10-35 months after the second round of
78 vaccination), suspected cholera cases were recruited at the two cholera treatment facilities in
79 Uvira: the Cholera Treatment Centre at the Uvira General Referral Hospital; and Cholera
80 Treatment Unit at the Kalundu CEPAC health center (both designated as CTC herein). A
81 suspected cholera case was any person ≥ 12 months old, reporting ≥ 3 acute, watery, and non-
82 bloody diarrheal stools within the 24 hours before hospitalization. Data on sociodemographic
83 characteristics, clinical manifestations, including the level of dehydration based on the Global
84 Task Force on Cholera Control (GTFCC) guidance,[7] vaccination status, and clinical

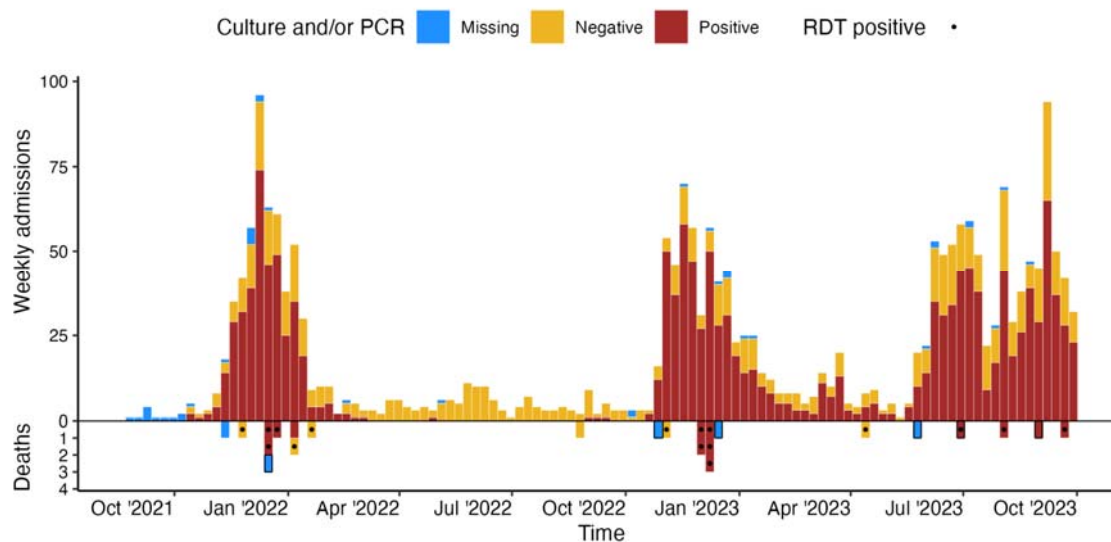
85 outcome were collected using a structured electronic questionnaire. Written consent was
86 obtained from participants. Rectal swabs and stool samples were collected from consenting
87 patients. Rectal swabs were enriched for 6-18 hours in alkaline peptone water at ambient
88 temperature (~30°C). Crystal VC Rapid Diagnostic Tests (RDTs; Arkay, India) were used to
89 test raw stool samples and rectal swab enrichments. Samples collected after September 2022
90 were cultured at the CTC laboratory, whereas those collected before were tested at Rodolphe
91 Mérieux INRB-Goma laboratory in North Kivu. In addition, stool samples from the 2021-
92 2022 outbreak were spotted onto Whatman 903 Protein Saver Cards (Cytiva, UK) and tested
93 by PCR at Johns Hopkins University[8].

94 Community deaths were not systematically captured by the surveillance system, so the study
95 team learned of suspected community cholera deaths through informal means (Appendix).
96 Visits were organized to collect additional information on the circumstances of death, socio-
97 demographics, clinical manifestations, and vaccination status for each suspected community
98 cholera death. Cholera was the suspected cause of death if the deceased was ≥ 12 months old
99 and their family members reported that they experienced acute watery diarrhea in the 24
100 hours preceding the death, with no other cause of death reported. Biological samples were
101 collected on arrival for deaths that occurred during the transit to the CTC.

102 The characteristics of study participants were compared using the Wilcoxon rank sum and
103 Pearson's Chi-squared (or Fisher's exact) tests. We estimated the effectiveness of at least one
104 dose of kOCV against severe cholera (defined by a culture/PCR-confirmed cholera case with
105 severe or treatment plan C dehydration) and suspected cholera death (i.e., any suspected
106 cholera case dying within the CTC with no other cause of death identified) using the
107 screening method, which relies on contrasts of the proportion of cases vaccinated and the
108 vaccine coverage in the population[9]. As vaccine coverage declined over time due to

109 population movement, we estimated a weighted vaccination coverage, based on a log-linear
110 regression of data from three representative vaccine coverage surveys conducted 11, 19 and
111 29 months after vaccination. We estimated confidence intervals for VE based on a logistic
112 regression model, as previously proposed[9].

113 Results



114 **Figure. Weekly cholera incidence (top) and death (bottom) by culture or PCR confirmation results in**
115 **Uvira, 01 September 2021 to 30 September 2023.** Before September 10, 2022, culture was performed with a
116 significant lag at an external reference laboratory (INRB Goma) from wet filter papers (stool or rectal swab
117 enrichments suspended in saline), likely leading to reduced sensitivity for detection of *V. cholerae* O1. From
118 September 10, 2022, culture has been performed on-site in Uvira. Rapid diagnostic tests (a mix of O1 and
119 O1/O139 tests) were also used throughout the study. For this reason, we show enriched rapid test positive
120 results as dots to help understand which deaths have more laboratory data supporting *V. cholerae* O1 as the
121 causative agent. Community deaths are highlighted with black boxes.
122
123

124 During the 25-month study period, 2209 suspected cholera cases were admitted to the CTCs,
125 of which 1,312 (61.9%) were RDT-positive and 1,460 (67.3%) cases were confirmed by
126 culture or PCR (Table 1). In the same period, 24 suspected cholera deaths were reported, of
127 which 18 (75%) occurred within CTCs, with a facility-based suspected case fatality ratio
128 (CFR) of 0.81% (18/2209).

129 **Table 1. Characteristics of patients with cholera who died and survived in the cholera**
 130 **treatment facilities, Uvira, September 2021 to September 2023**

Characteristic	Overall, N = 2,209	Suspected cholera deaths, N = 18	Suspected cholera cases (survivors), N = 2,191	P value
Age (years), median (IQR)	17.0 (7.0, 34.0)	40.0 (21.0, 67.8)	17.0 (7.0, 34.0)	<0.001
Age group (years)				<0.001
< 5 years	384 (17.4%)	1 (5.6%)	383 (17.5%)	
5-14 years	608 (27.5%)	1 (5.6%)	607 (27.7%)	
15-59 years	1,024 (46.4%)	8 (44.4%)	1,016 (46.4%)	
≥ 60 years	193 (8.7%)	8 (44.4%)	185 (8.4%)	
Sex				0.873
Female	1,063 (48.1%)	9 (50.0%)	1,054 (48.1%)	
Male	1,146 (51.9%)	9 (50.0%)	1,137 (51.9%)	
Health facility				0.758
CTC (Uvira Referral Hospital)	1,806 (81.8%)	16 (88.9%)	1,790 (81.7%)	
CTU (Kalundu CEPAC health center)	403 (18.2%)	2 (11.1%)	401 (18.3%)	
Level of dehydration on admission*				0.002
Mild to moderate	1,060 (48.0%)	2 (11.1%)	1,058 (48.3%)	
Severe	1,149 (52.0%)	16 (88.9%)	1,133 (51.7%)	
Time from symptoms onset to hospitalization				0.253
< 1 day	1,209 (54.9%)	9 (50.0%)	1,200 (54.9%)	
1 day	776 (35.2%)	9 (50.0%)	767 (35.1%)	
≥ 2 days	219 (9.9%)	0 (0.0%)	219 (10.0%)	
Missing	5	0	5	
Duration of hospitalization				<0.001
< 1 day	130 (6.0%)	7 (38.9%)	123 (5.7%)	
1 day	542 (24.8%)	6 (33.3%)	536 (24.7%)	
≥ 2 days	1,512 (69.2%)	5 (27.8%)	1,507 (69.6%)	
Missing	25	0	25	
Comorbidities**				0.490
No	1,449 (91.9%)	7 (87.5%)	1,442 (92.0%)	
Yes	127 (8.1%)	1 (12.5%)	126 (8.0%)	
Missing	633	10	623	
Sought care at another health facility				0.746
No	1,875 (84.9%)	15 (83.3%)	1,860 (84.9%)	
Yes	334 (15.1%)	3 (16.7%)	331 (15.1%)	
Treated at home or pharmacy				0.557
No	1,075 (48.7%)	10 (55.6%)	1,065 (48.6%)	
Yes	1,134 (51.3%)	8 (44.4%)	1,126 (51.4%)	

Use of antibiotics before admission				0.232
No	1,163 (52.6%)	12 (66.7%)	1,151 (52.5%)	
Yes	1,046 (47.4%)	6 (33.3%)	1,040 (47.5%)	
APW-enriched RDT				0.081
Negative	807 (38.1%)	3 (17.6%)	804 (38.2%)	
Positive	1,312 (61.9%)	14 (82.4%)	1,298 (61.8%)	
Missing	90	1	89	
Culture/PCR confirmed cholera				0.818
Negative	709 (32.7%)	6 (35.3%)	703 (32.7%)	
Positive	1,460 (67.3%)	11 (64.7%)	1,449 (67.3%)	
Missing	40	1	39	
Vaccination status				>0.999***
Not vaccinated	1,688 (81.0%)	11 (84.6%)	1,677 (80.9%)	
At least 1 dose	397 (19.0%)	2 (15.4%)	395 (19.1%)	
Missing	124	5	129	

131 Data are n (proportion) unless otherwise specified. *: The level of dehydration assessed using the Global Task
 132 Force on Cholera Control (GTFCC) guidance.[7] **: Comorbidities refer to self-reported diabetes, hypertension,
 133 or HIV infection (Appendix). P values are derived from Pearson's Chi-squared test or Fisher's exact test
 134 comparing attributes between survivors and those who died, denoted by ***. A confirmed cholera case was
 135 defined by a positive PCR or culture result. A negative case was confirmed by negative PCR and culture, or by a
 136 negative culture only result when PCR was not done.

137 Fourteen (82.4%) of the 17 health facility deaths in which a sample was collected tested
 138 positive for cholera by RDT, and 11 (64.7%) by culture or PCR. The overall culture/PCR-
 139 confirmed facility-based CFR was 11 /1449 (0.75%), though this was significantly higher in
 140 participants aged ≥ 60 years [4.46% (5/107), $p=0.010$] compared to younger ones. The
 141 suspected cholera CFR in this age-group (≥ 60 years) was 5.45% (11/191) (Table S2).

142 Comparison between suspected cholera deaths and survivors in health facilities revealed that
 143 those dying from cholera tended to be older, with a median (interquartile range, IQR) age:
 144 40.0 (21.0 – 67.8) years] more than double that of survivors [median (IQR): 17.0 (7.0–34.0)
 145 years; $p < 0.001$], with no difference by sex (Table 1). Suspected cases who died were more
 146 likely to have been admitted with severe dehydration compared to survivors (88.9% vs
 147 51.7%, $p=0.002$). Eleven (61.1%) health facility deaths occurred after at least one day of

148 hospitalization. Two of the facility deaths with known vaccination status (n=13), both
149 culture-positive, were reported to have received one dose of oral cholera vaccine during the
150 2020 vaccination campaign, but we were unable to confirm these with vaccination cards.

151 The estimated VE was 78.4% (95% CI 74.2–82.4%) against severe culture/PCR-confirmed
152 cholera (dehydration plan C) and 85.5% (95% CI 49.0–97.7%) against death from all-cause
153 diarrhea (suspected cholera death). The method we used to estimate vaccine effectiveness
154 relies heavily on assumptions about the vaccine coverage in the community, and even when
155 assuming a 10% lower vaccination coverage in the population than measured from cross-
156 sectional surveys, the estimated VE against suspected cholera death remained substantial
157 (above 70%) (Figure S1).

158 The age of community deaths ranged between 4-74 years (median: 38 years), with half (n=3)
159 of them being female. Two community deaths had a stool specimen collected and tested
160 positive for cholera by RDT and culture.

161 **Discussion**

162 The 0.81% facility-based CFR for suspected cholera cases observed from this passive
163 surveillance system aligns with the WHO target of <1% and was lower than that reported
164 between 2008-2017 in DRC hotspot health zones (1.1%)[10]. While we captured some
165 community deaths, the true cholera mortality burden in Uvira is likely higher than reported
166 here due to lack of robust community-based surveillance and the number of private health
167 facilities that are not integrated into the official surveillance system. The limited existing
168 studies comparing the reported number of facility deaths to those occurring in both facilities
169 and the community suggest this gap is large [2–4,11]. A study from rural Kenya showed that
170 while suspected cholera cases were under-reported by 37%, suspected cholera deaths were

171 under-reported by 200%, implying a 52% underestimate of the community CFR[2–4,11]. In
172 Cameroon, 44% of suspected cholera deaths occurred in the community or during transit to a
173 treatment unit [3]. During the 2010-2011 cholera outbreak in Haiti, community surveys led to
174 almost a 3-fold higher death toll in certain areas compared to official facility-based
175 estimates[4].

176 A previous report from across DRC suggested that 20.8% of the suspected cholera deaths
177 during the 2008-2017 period were among those under five years old, a stark contrast to the
178 6.6% in our study [10]. This difference may be a result of several factors including the
179 systematic application of case definitions in Uvira (i.e., improved specificity), differences in
180 health seeking behaviors and/or in the quality of care given to young patients in Uvira.

181 Almost half of the health facility deaths (8/18) occurred among patients aged at least 60
182 years, leading to an unacceptably high age group-specific CFR (4.02%). Moreover, 61.1% of
183 deaths happened after ≥ 1 day of hospitalization. This may be because clinical assessment and
184 management of severe dehydration is challenging in the elderly who might have
185 comorbidities requiring slower rehydration pace to avoid fluid overload. Complications
186 related to underlying comorbidities like cardiovascular diseases, diabetes mellitus, anemia, or
187 malnutrition may be overlooked in cholera treatment centers, particularly in the middle of an
188 outbreak, as rehydration is the priority. CTCs in most humanitarian settings, including in our
189 study site, are not sufficiently equipped for an adequate assessment and management of other
190 health conditions cholera patients may present with, including chronic morbidities. Ensuring
191 that CTCs offer comprehensive and person-centered care (as opposed to solely dehydration-
192 centered care) might contribute to the reduction of cholera CFR, particularly among the
193 elderly.

194 Our findings indicate that the only kOCV currently available in the global stockpile
195 (Euvichol-plus) is highly protective against severe cholera and death. The few available
196 studies reporting kOCV effectiveness against severe cholera point to similar levels of
197 protection, ranging from 73% (23 to 91) 4-24 months post-vaccination in Haiti[12] to 48%
198 (16 to 67) in the fourth year post-vaccination in Bangladesh.[13] Despite the relatively small
199 number of deaths limiting more stratified analyses, this study provides the first, insights into
200 kOCV effectiveness against death and suggests that large-scale deployment of kOCVs in
201 preventive vaccination campaigns may substantially contribute to achieving the Global Task
202 Force on Cholera Control's goal of reducing cholera mortality by 90% by 2030.[14]

203 **Conclusion**

204 While the public health community strives to improve the cholera surveillance [15],
205 describing the magnitude and drivers of community and confirmed facility deaths is critical
206 to help correctly target those most at risk and improve patient care and estimates of cholera
207 burden. This study provides a unique insight into confirmed cholera mortality in a resource-
208 constrained and endemic setting. Studies with larger sample sizes, including community
209 surveillance and in different endemicity settings are needed to confirm our findings.

210 **Financial support**

211
212 This work was supported by the Wellcome Trust and Gavi (GAVI-RFP-2019-062). The
213 funders had no role in study design, data collection and analysis, decision to publish, or
214 preparation of the manuscript.

215

216 **Potential conflicts of interest**

217

218 All other authors report no potential conflicts.

219 **References**

- 220 1. Kanungo S, Azman AS, Ramamurthy T, Deen J, Dutta S. Cholera. *Lancet* **2022**; 399:1429–1440.
- 221 2. Shikanga O-T, Mutonga D, Abade M, et al. High mortality in a cholera outbreak in western
222 Kenya after post-election violence in 2008. *Am J Trop Med Hyg* **2009**; 81:1085–1090.
- 223 3. Djouma FN, Ateudjieu J, Ram M, Debes AK, Sack DA. Factors Associated with Fatal Outcomes
224 Following Cholera-Like Syndrome in Far North Region of Cameroon: A Community-Based
225 Survey. *Am J Trop Med Hyg* **2016**; 95:1287–1291.
- 226 4. Luquero FJ, Rondy M, Boncy J, et al. Mortality Rates during Cholera Epidemic, Haiti, 2010-
227 2011. *Emerg Infect Dis* **2016**; 22:410–416.
- 228 5. Azman AS, Moore SM, Lessler J. Surveillance and the global fight against cholera: Setting
229 priorities and tracking progress. *Vaccine* **2020**; 38 Suppl 1:A28–A30.
- 230 6. World Health Organization. Weekly epidemiological record. World Health Organization, 22
231 SEPTEMBER 2023, 98 YEAR. Available at: <http://www.who.int/wer>. Accessed 17 October
232 2023.
- 233 7. Global Task Force on Cholera Control (Surveillance Working Group). Interim guidance
234 document on cholera surveillance. GTFCC, 2017. Available at: [https://www.gtfcc.org/wp-](https://www.gtfcc.org/wp-content/uploads/2019/10/gtfcc-interim-guidance-document-on-cholera-surveillance.pdf)
235 [content/uploads/2019/10/gtfcc-interim-guidance-document-on-cholera-surveillance.pdf](https://www.gtfcc.org/wp-content/uploads/2019/10/gtfcc-interim-guidance-document-on-cholera-surveillance.pdf).
236 Accessed 3 August 2023.
- 237 8. Debes AK, Ateudjieu J, Guenou E, et al. Clinical and Environmental Surveillance for *Vibrio*
238 *cholerae* in Resource Constrained Areas: Application During a 1-Year Surveillance in the Far
239 North Region of Cameroon. *Am J Trop Med Hyg* **2016**; 94:537–543.
- 240 9. Farrington CP. Estimation of vaccine effectiveness using the screening method. *Int J Epidemiol*
241 **1993**; 22:742–746.
- 242 10. Ingelbeen B, Hendrickx D, Miwanda B, et al. Recurrent Cholera Outbreaks, Democratic
243 Republic of the Congo, 2008-2017. *Emerg Infect Dis* **2019**; 25:856–864.
- 244 11. Pampaka D, Ciglenecki Z, Alberti K, Olson D. Risk factors of cholera mortality: a scoping
245 review. Global Task Force on Cholera Control (GTFCC) , 2022. Available at:
246 <https://www.gtfcc.org/wp-content/uploads/2023/02/gtfcc-risk-factors-of-cholera-mortality.pdf>.
247 Accessed 14 March 2023.
- 248 12. Ivers LC, Hilaire IJ, Teng JE, et al. Effectiveness of reactive oral cholera vaccination in rural
249 Haiti: a case-control study and bias-indicator analysis. *The Lancet Global Health* **2015**; 3:e162–
250 e168.
- 251 13. Ali M, Qadri F, Kim DR, et al. Effectiveness of a killed whole-cell oral cholera vaccine in
252 Bangladesh: further follow-up of a cluster-randomised trial. *Lancet Infect Dis* **2021**; 21:1407–
253 1414.
- 254 14. World Health Organization. Global Task Force on Cholera Control. Ending Cholera, a Global
255 Roadmap to 2030. World Health Organization, 2017.

- 256 15. GTFCC. Public health surveillance for cholera: Interim guidance. Global Taskforce on Cholera
257 Control (GTFCC), 2023. Available at: [https://www.gtfcc.org/wp-content/uploads/2023/02/gtfcc-
public-health-surveillance-for-cholera-interim-guidance.pdf](https://www.gtfcc.org/wp-content/uploads/2023/02/gtfcc-
258 public-health-surveillance-for-cholera-interim-guidance.pdf). Accessed 14 March 2023.