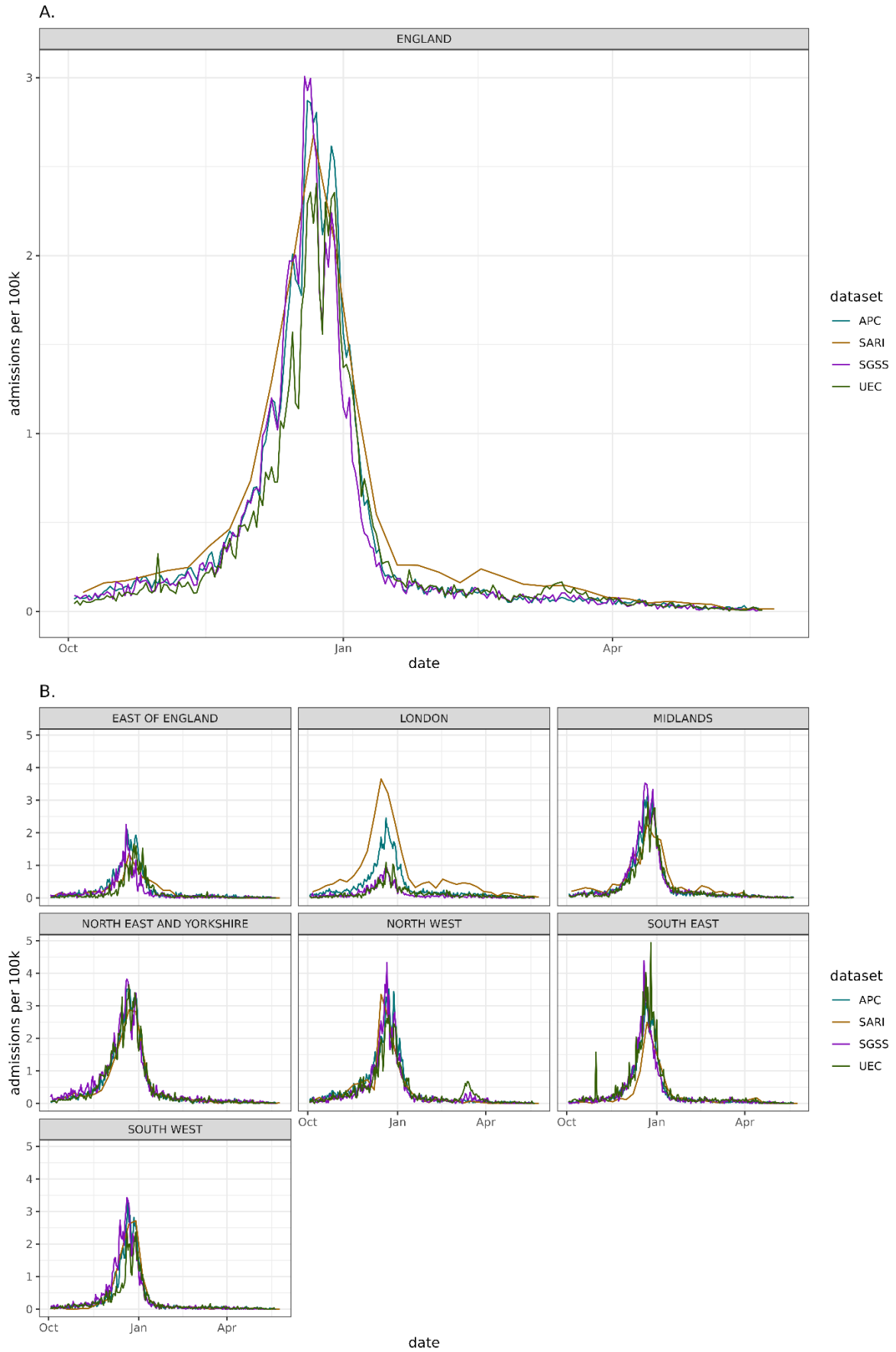


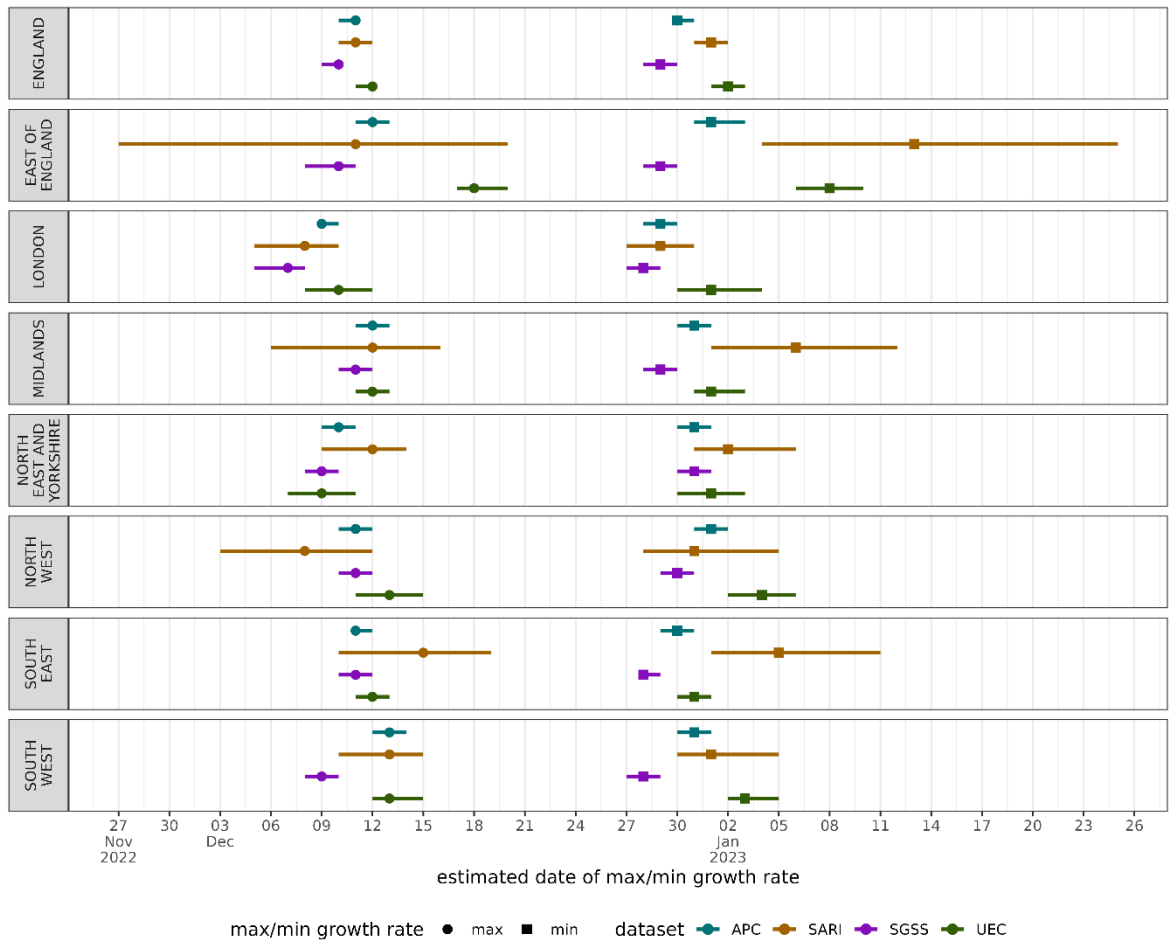
Supplementary Figure 1. The proportion of trusts which have a set proportion of zeros reported over the study period. The weekly rolling mean value of the daily data (APC, SGSS, UEC) is shown to make it comparable to the weekly SARI. The cut-off threshold in the proportion of reports is used as an exclusion criteria for misreporting. A lower threshold would exclude more trusts that may have reported correctly across data sources, while a higher threshold would have limited impact.

Region	Dataset	Trusts reporting (minimum – maximum)	Peak Admissions	Cumulative Admissions
EAST OF ENGLAND	APC	12 - 12	117	3371
	SARI	1 - 5	12	85
	SGSS	7 - 7	66	1216
	UEC	10 - 13	70	1829
LONDON	APC	18 - 18	223	6933
	SARI	2 - 4	81	483
	SGSS	12 - 12	60	1723
	UEC	10 - 17	60	2032
MIDLANDS	APC	20 - 20	311	8787
	SARI	0 - 2	29	151
	SGSS	16 - 16	306	8508
	UEC	15 - 18	244	6541
NORTH EAST AND YORKSHIRE	APC	21 - 21	292	10070
	SARI	1 - 3	41	229
	SGSS	13 - 13	224	7516
	UEC	15 - 19	251	8148
NORTH WEST	APC	16 - 16	230	6648
	SARI	3 - 4	23	106
	SGSS	13 - 13	186	3966
	UEC	11 - 13	139	4622
SOUTH EAST	APC	15 - 15	218	5724
	SARI	1 - 3	12	60
	SGSS	8 - 8	177	3277
	UEC	12 - 14	318	6505
SOUTH WEST	APC	13 - 13	206	4510
	SARI	1 - 3	37	122
	SGSS	9 - 9	145	3400
	UEC	10 - 12	133	3029

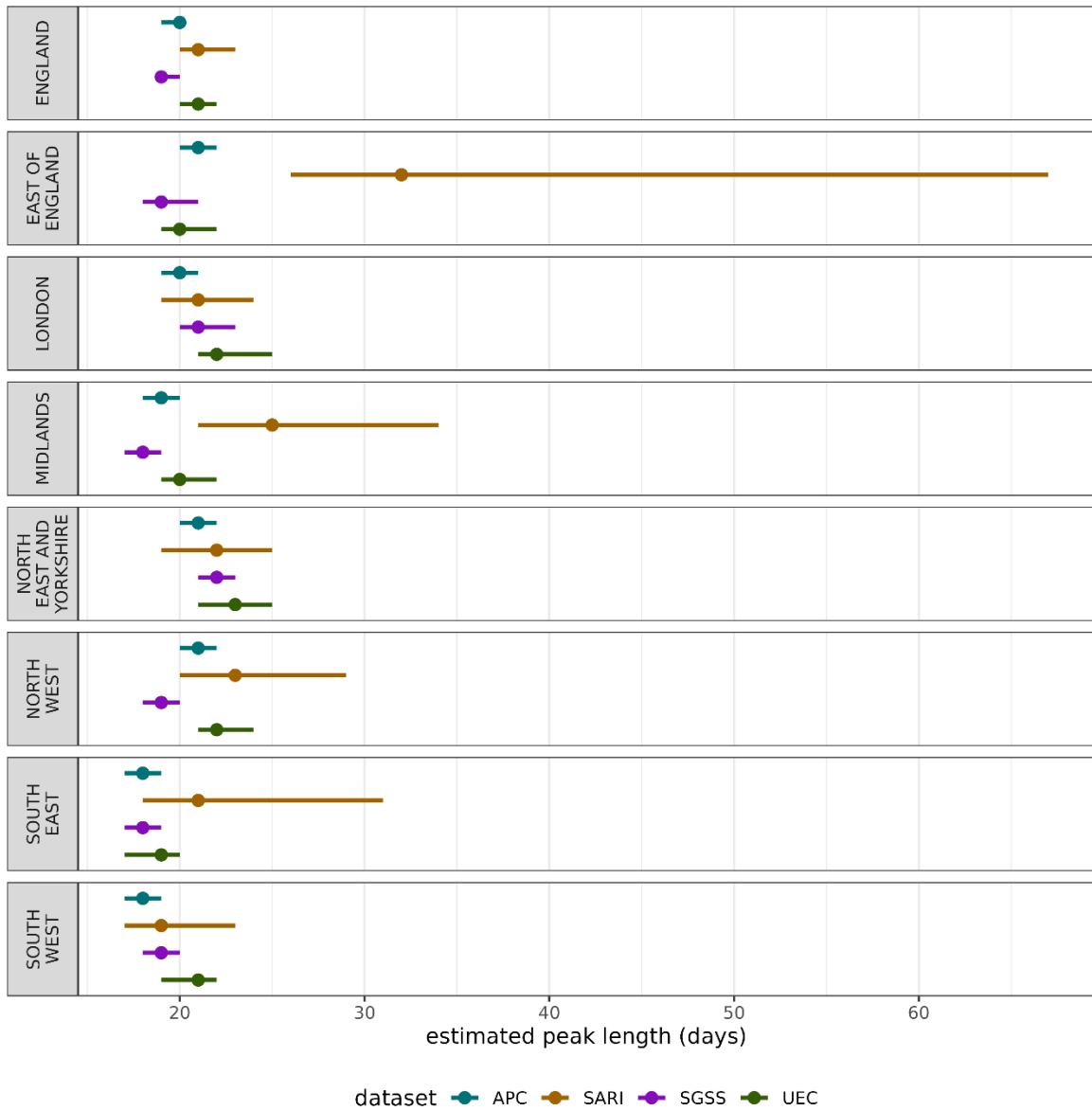
Supplementary Table 1. Unmodelled NHS regional summaries of reported data across the different data sources. Counts are from the processed data after exclusion criteria are applied. Trust counts are the lowest and highest number of participating Trusts for a given report post exclusion criteria. Peak admissions are taken as the maximum admissions in each report and cumulative admissions the sum of all admissions reported. These metrics are not corrected for time varying participation and population catchment sizes.



Supplementary Figure 2. Influenza admission rate per 100k trust catchment population nationally (sub-plot A) and NHS commissioning region (sub-plot B) over the winter 2022/23 season.



Supplementary Figure 3. The estimated date of maximum and minimum growth rate, corresponding to the fastest increase and decreasing point of the epidemic wave across each data source over the 2022/23 winter season in England. The central point represents the median estimate, and the lines the 95% confidence interval.



Supplementary Figure 4. The estimated length of the peak, defined as the days between the date of maximum growth rate (fastest increase) and minimum growth rate (fastest decrease) across each data source over the 2022/23 winter season in England. The central point represents the median estimate, and the lines the 95% confidence interval.