

A combined risk model shows viability for personalized breast cancer risk assessment in the Indonesian population

Bijak Rabbani^{*1}, Sabrina Gabriel Tanu^{*1}, Kevin Nathanael Ramanto¹, Jessica Audrienna¹, Fatma Aldila¹, Eric Aria Fernandez¹, Mar Gonzalez-Porta¹, Margareta Deidre Valeska¹, Jessline Haruman¹, Lorina Handayani Ulag¹, Yusuf Maulana¹, Kathleen Irena Junusmin¹, Margareta Amelia¹, Gabriella Gabriella¹, Feilicia Soetyono¹, Aulian Fajarrahman¹, Salma Syahfani Maudina Hasan¹, Faustina Audrey Agatha², Marco Wijaya², Stevany Tiurma Br Sormin², Levana Sani¹, Soegianto Ali³, Astrid Irwanto¹, Samuel J Haryono²

*joint first authors

¹Nalagenetics Pte Ltd, 1093 Lower Delta Road, #04-05/06/07/08, Singapore 169204

²SJH Initiatives, MRCCC Siloam Hospitals Semanggi, Jakarta Indonesia

³Biomedicine department, School of Medicine and Health Sciences, Atma Jaya Catholic University of Indonesia

Abstract

Breast cancer remains a significant concern worldwide, with a rising incidence in Indonesia. This study aims to evaluate the applicability of risk-based screening approaches in the Indonesian demographic through a case-control study involving 305 women. We developed a personalized breast cancer risk assessment workflow that integrates multiple risk factors, including clinical (Gail) and polygenic (Mavaddat) risk predictions, into a consolidated risk category. By evaluating the area under the receiver operating characteristic curve (AUC) of each single-factor risk model, we demonstrate that they retain their predictive accuracy in the Indonesian context (AUC for clinical risk: 0.67 [0.61,0.74]; AUC for genetic risk: 0.67 [0.61,0.73]). Notably, our combined risk approach enhanced the AUC to 0.70 [0.64,0.76], highlighting the advantages of a multifaceted model. Our findings demonstrate for the first time the applicability of the Mavaddat and Gail models to Indonesian populations, and show that within this demographic, combined risk models provide a superior predictive framework compared to single-factor approaches.

Introduction

Breast cancer is a pressing global public health concern. It has emerged as the most commonly diagnosed type of cancer worldwide, with its prevalence steadily rising in recent years. For example, in 2020 alone, an estimated 2.48 million cases were reported worldwide, resulting in approximately 685,000 deaths¹. In Indonesia, breast cancer mirrors the global trajectory, establishing itself as a leading cause of mortality among women². Specifically, in 2020, GLOBOCAN documented over 68,000 new diagnoses and 22,000 resultant deaths, representing incidence and mortality rates of 15.3% and 11%, respectively³. Thus, addressing the burden of breast cancer is crucial for improving public health outcomes.

As with other cancers, prompt diagnosis and timely therapeutic interventions have been unequivocally associated with enhanced patient prognosis and diminished mortality rates. Specifically, survival rates for stage 1 breast cancer are estimated at 99% five years post-diagnosis, but this figure quickly diminishes to 30% for advanced stages⁴. As a result, numerous countries have established population screening programs to promote early detection of breast cancer. Mammography remains the primary method for breast cancer screening and has been proven to decrease mortality rates^{5,6}. Nonetheless, mammography is not devoid of challenges. Typically, it adopts a uniform approach, recommending all women within a certain age bracket to undergo the procedure⁶. Moreover, in Asian populations, women present higher breast tissue density, which complicates mammogram interpretation and can lead to false-positive diagnoses⁷. Compounding the challenges above, Indonesia has yet to incorporate breast cancer screening into its national health agenda, and the procedure remains unsupported by the national health insurance framework. This financial constraint dissuades women from pursuing mammographic screening and compromises diagnostic rates when the disease is the most actionable⁸. For instance, a longitudinal analysis conducted over three decades at multiple academic hospitals found that a significant proportion of patients, ranging from 68-73%, only sought medical consultations during the advanced stages of the disease².

Collectively, the observations highlighted above underscore the need for refining breast cancer screening strategies, emphasizing both accessibility and diagnostic precision. Recently, risk-based screening, which customizes recommendations according to individual risk profiles, has challenged the traditional one-size-fits-all screening paradigms, and is emerging as a promising approach for enhanced patient stratification⁹⁻¹². A myriad of risk factors, encompassing clinical predispositions, familial history, and genetic markers, have been considered into these advanced screening methods. For example, the Gail model, a non-genetic risk assessment tool, offers insights into the probability of an individual developing breast cancer over a five-year span based on clinical risk factors, including age, reproductive history, and familial breast cancer incidence¹³. Similarly, pathogenic mutations in high-penetrance genes, such as BRCA1 and BRCA2, which are involved in DNA repair, have long been recognised as pivotal risk determinants for breast cancer and have been incorporated into routine clinical practice¹⁴. More recently, Polygenic Risk Scores (PRS) such as the Mavaddat model, which aggregate the effects of multiple low-penetrance genes, have been demonstrated to harbour predictive power

comparable to their high-penetrance counterpart^{15,16}. However, despite advances in risk-based screening, most research and model development has been focused on Western populations¹⁷. This leaves a gap in understanding the applicability of these models to Southeast Asian populations, such as Indonesia. Unique genetic, environmental, and clinical factors may affect breast cancer risk in these populations, so validating and adapting these models is essential.

In the present study, we assess the applicability of two notable breast cancer risk assessment models to the Indonesian demographic, based on a case-control study involving 305 women. We focus on the predictive accuracy of the Gail model, which evaluates clinical risk, the Mavaddat model, which assesses polygenic risk, as well as pathogenic mutations in BRCA1/2 genes, which are representative of monogenic risk. Additionally, we utilize a combined risk model to categorise patients into either elevated or average risk groups. Our objective is to address the current knowledge gap and offer a risk assessment instrument specifically designed for the Indonesian context.

Results

Development and validation of a personalised breast cancer risk assessment workflow

We have developed a personalized breast cancer risk assessment workflow that integrates data from multiple risk factors, including assessment of clinical risk based on the Gail model, evaluation of polygenic risk through the Mavaddat model, and monogenic risk through detection of pathogenic/likely pathogenic mutations in BRCA1/2 (**Figure 1**). The process begins with a pre-test counselling session, during which eligible participants, upon providing informed consent, submit a buccal sample and complete a risk survey. This sample is then processed in a testing laboratory where it is genotyped using microarrays. Bioinformatic analyses are next employed to calculate ancestry-adjusted PRS and to translate these into 5-year absolute risk scores, leveraging localized breast cancer incidence and mortality data. Array results are also inspected to determine the presence of pathogenic/likely pathogenic mutations in BRCA1/2 genes. Lastly, responses from the clinical risk survey are analysed to derive 5-year absolute risk scores in accordance with the Gail model. In a final step, both the genetic and clinical risk scores are combined into a risk category, with participants receiving individualized risk reports during a post-test consultation.

To validate the accuracy of the aforementioned reporting workflow, we assembled complementary datasets for both pre-clinical and clinical validation. The pre-clinical validation study utilized well-characterized reference materials from the Genome In a Bottle (GIAB) project¹⁸, encompassing five samples tested in replicates, and Horizon reference standard cell lines¹⁹ with known mutations in BRCA1/2 genes, comprising two samples also tested in replicates. In addition, a mock dataset simulating responses to the clinical risk survey was used to confirm the correct implementation of the clinical risk model. The clinical validation study involved a case/control cohort, consisting of female breast cancer patients (cases) and healthy females (controls), recruited from MRCCC Siloam Hospitals Semanggi and other locations (**Figure 2**). Following participant triage and biological sample quality control, 305 individuals remained eligible for final analysis, comprising 149 cases and 156 controls (48.85% and 51.15% of the study population, respectively). The demographic breakdown revealed 114 participants of Indonesian Chinese ancestry and 191 from other Indonesian backgrounds (**Supplementary Table 1**), with mean ages of 47.86 years (± 8.20) for cases and 44.26 years (± 7.88) for controls.

Accuracy of the Gail clinical risk model in the Indonesian population

Firstly, we evaluated whether the Gail model can be applied successfully to the local population. We first sought to validate our tool by comparing answers from our data analysis pipeline to those from the NIH BRCAT tool²⁰. We relied on simulated dataset with mock answers, which has been manually generated to cover a range of ethnicities and risk outcomes and utilized

Pearson correlation analysis to compare the clinical risk scores from both methods (see Methods). We observed a very strong correlation (Pearson correlation 0.94, p-value 3.38×10^{-15}) between the results of the NIH BRCA tool and the Bioinformatics pipeline used in our clinical workflow, supporting the validity of our software to calculate clinical risk.

Next, we evaluated the predictive accuracy of the Gail model by applying it to our patient cohort. We calculated 5-year absolute risk scores for all study participants and compared them between case and control groups. As expected, the case group exhibited higher scores (**Figure 3A**), with a mean of 0.76 (± 0.44), compared to 0.54 (± 0.31) for controls (p-value of 5.16×10^{-04}). Notably, the difference in scores among groups persists when controlling for age and ethnicity as potential confounding factors in the study (p-value: 4.82×10^{-02}). In addition, we observed an AUC of 0.67 with 95% CI [0.61,0.74] (**Figure 3B**), which aligns with previously reported outcomes for Western and Asian ancestry populations^{15,21–25}. Altogether, these findings support the applicability of the Gail model to Indonesian populations.

Assessment of polygenic risk using the Mavaddat model

We next aimed to assess the genotyping accuracy of our array workflow by evaluating our ability to obtain correct genotype calls at PRS loci. For this assessment, we relied on a set of cell lines with well-established variant truthsets (Genome In A Bottle, GIAB)^{18,26}, which we genotyped in-house. Assessing the accuracy of genotype calls in Mavaddat loci indicated high analytical sensitivity and specificity across all samples tested (99.25 ± 0.46 and 96.89 ± 0.50 , respectively; **Table 1**). To further assess calling accuracy in each of the individual 313 loci of the PRS model, we expanded our evaluation dataset with 19 cell lines from the 1000 Genomes Project²⁷, which combined with the previous GIAB dataset, covered 306 out of the 313 loci. This analysis showed that 98.69% of sites (302/306) had >95% concordance with the expected calls across all samples, thus demonstrating high per-site accuracy in our workflow (**Supplementary Figure 1**).

Subsequently, we calculated PRS using PLINK, accounting for ancestry using established methods (see Methods). We compared ancestry-adjusted PRS distributions across cases and controls, and detected a significant difference across groups, with higher scores observed in the cases (0.63 ± 0.97 vs. 0.24 ± 0.88 ; p-value: 2.70×10^{-04}), and an overall AUC of 0.63 (**Supplementary Figure 2**). Since our final report includes absolute risk scores instead of the relative risk reported by PRS, we also analyzed the distribution of 5-year absolute risk scores between groups. Notably, the trend previously observed for PRS persisted, with cases exhibiting higher risk scores compared to controls (0.94 ± 0.48 vs. 0.68 ± 0.38 ; p-value: 3.48×10^{-07} , **Figure 4A**). Similar to previous observations for clinical risk, the difference among groups remained significant even after adjusting for age and ethnicity as potential confounding factors (p-value: 1.20×10^{-03}). In addition, we observed an AUC of 0.67 with 95% CI [0.61,0.73] (**Figure 4B**), which is aligned with ranges previously reported in Western and Asian populations^{16,28}, indicating that the Mavaddat model can be applied with equivalent predictive accuracy in the Indonesian population.

Lastly, we sought to compare the genetic risk predictions from our software with those from an established third-party tool by analyzing array results from a subset of samples in our patient cohort (N=32) using both platforms (**Supplementary Table 2**). As expected, we noted a significant correlation in PRS results across both tools (Pearson correlation coefficient: 0.95; p-value: 6.11×10^{-12}). However, we identified differences in the approaches each tool uses to interpret PRS into categorical risk outcomes. Our workflow translates PRS into a 5-year absolute risk, incorporating localized disease incidence and mortality rates, and utilizes a 1.7% threshold to distinguish between elevated and average risk. In contrast, the third-party tool categorizes PRS above the 91st percentile as high risk, equating to a $\geq 20\%$ lifetime disease risk, and relies on a broader population reference to determine a patient's percentile score. Notably, when comparing the predictive accuracies of the risk categories defined by each platform, we observed higher concordance with phenotypic outcomes in our software compared to the third-party tool (59.38% vs. 37.50%). This finding underscores the importance of considering localized factors when determining categorical risk outcomes from PRS.

Identifying pathogenic mutations in BRCA1/2

The Illumina GSA chip, which we utilized to genotype samples in our study, encompasses a total of 5168 markers in the BRCA1 and BRCA2 genes, with 2900 of them being annotated as pathogenic/likely pathogenic mutations according to ClinVar²⁹. Our analytical pipeline has been developed to report pathogenic mutations in these loci, prioritizing results from direct genotyping and preceding any imputation steps. Specifically, we focus on known pathogenic variants in ClinVar, with a confidence score of 2 or higher (see Methods).

In order to assess the performance of our workflow, we genotyped two Horizon reference material cell lines, HD793 and HD794, each engineered to contain mutations in BRCA1/2^{30,31}. Each cell line was genotyped in triplicate, and we evaluated our results by comparing the obtained genotype calls to the verified mutations from Horizon, demonstrating 100% analytical sensitivity and specificity across 26 assessed markers (**Table 2**). After establishing the analytical validity of our workflow, we proceeded to interrogate the presence of pathogenic variants in our study cohort. We detected pathogenic mutations in 14 individuals, all of whom reassuringly belonged to the case group (**Supplementary Table 3**).

Performance evaluation of the combined risk model

In the final stage of our data analysis workflow, we integrate various risk predictions - clinical, polygenic, and monogenic - to determine an overall risk category. Individual risk factors are initially converted into a categorical outcome as follows: 5-year absolute risk scores for clinical and polygenic risk are categorized as either elevated or average using a 1.7% cut-off, while monogenic risk is deemed elevated if a pathogenic variant is detected. Subsequently, a consolidated risk category is then established by selecting the highest risk classification from the three inputs (**Figure 1**).

To assess the accuracy of our combined risk predictions, we first evaluated the impact on accuracy when combining clinical and polygenic risk, as opposed to relying on single-risk factors alone. The analysis yielded an AUC of 0.70 [95% CI: 0.64,0.76] for the two-factor combined risk model, higher than that of single-factor risk models (**Figure 5A**). Next, we examined the proportion of study participants classified as either average or elevated risk within the case and control groups, taking into account the three-factor consolidated risk categories. Our analysis revealed a higher proportion of elevated risk predictions in the case group compared to the controls (15% vs. 4%, respectively; **Figure 5B**), a trend that was statistically significant with an odds ratio of 3.81 and a p-value of 1.3×10^{-03} . Lastly, we estimated the Positive Predictive Value (PPV) and Negative Predictive Value (NPV) of our assay, with values of 78.13% and 54.58%, respectively.

Discussion

Early detection of breast cancer significantly enhances patient prognosis and reduces mortality rates, yet current screening strategies predominantly adhere to a one-size-fits-all approach. Notably, not all countries have established population screening programs to promote mammography screening, and even in countries that have, the uptake rate remains low. For instance, in Indonesia, breast cancer screening has not yet been integrated into the national health agenda. Meanwhile, in Singapore, where it has been established, only a mere 28% of primary educated women undergo screening, and 30% of diagnoses occur in women below the suggested screening age^{32,33}. Emerging risk-based screening approaches promise better patient stratification and increased screening rates. However, the prevalent ancestry bias in the development of underlying risk models poses a significant challenge for their widespread adoption, particularly for PRS models, which rely on common genetic variants that can be markedly influenced by population-specific allele frequencies. While creating new models based on diverse ancestries is technically feasible, the scarcity of data presents a substantial barrier, making the evaluation of the applicability of existing models to various ancestries a critical task. In this context, our study aims to assess the clinical validity of two established risk prediction models, the Mavaddat and Gail models, for the Indonesian population, which we combine with monogenic risk factors, particularly pathogenic mutations in BRCA1/2 genes. In addition, we propose a personalized breast cancer risk assessment workflow based on array genotyping as a first step towards the implementation of risk-based screening in the region.

To validate the predictive accuracy of the Gail and Mavaddat models in the Indonesian context, we conducted a case-control study involving 305 participants of local descent. Our analysis revealed that the observed AUC of 0.67 for the Gail model aligns with the range documented in published studies^{15,21-25}. For genetic risk, we observed an AUC of 0.63 for ancestry-adjusted PRS, indicating a slight regression in performance compared to the original study (AUC=0.64), which utilized samples from the UK Biobank¹⁶. The AUC, a metric derived from the Receiver Operating Characteristic (ROC) curve, is commonly used when evaluating the predictive accuracy of a model, and a higher AUC implies that the model has a higher true positive rate and a lower false positive rate, which is crucial in minimizing misclassifications in risk prediction. Altogether, our observations on the AUC of ancestry-adjusted PRS suggest the potential for developing more accurate models in the Asian population, a prospect that could become a reality as larger Asian cohorts become available to identify population-specific variants. Current population-genomic initiatives, such as the Biomedical and Genome Science Initiative (BGSi) in Indonesia, are poised to bridge this gap. It is also important to emphasize that our method of interpreting risk scores into categories relies on absolute risk, not relative risk. By incorporating localized data on disease incidence and mortality from Indonesian statistics, we have achieved improved performance in risk scores compared to solely interpreting PRS (AUC of 0.67 for absolute risk scores vs. 0.63 for ancestry-adjusted PRS). This localized approach demonstrates a more significant impact when comparing our risk prediction results with those from a third-party software that relies on a broader population reference to derive risk categories based on PRS percentiles, as demonstrated by the higher concordance with phenotypic outcomes in our

software compared to the third-party tool (59.38% vs. 37.50%). Altogether, our observations show, for the first time, the applicability of the Gail and Mavaddat models in the Indonesian context and highlight the potential for further enhancing performance through the creation of new models based on localized datasets.

While the results presented above showcase the performance of both clinical and PRS models individually, it underscores that the best accuracy is achieved when these models are combined (AUC of 0.70 for the combined risk model vs. 0.67 for single-factor models). This finding aligns with previous research, suggesting that a multi-faceted approach to risk prediction surpasses the efficacy of single-factor models. For example, research conducted by Hurson et al³⁴ utilizing multiple datasets of European ancestry illustrated that integrating classical factors with PRS can enhance the detection of individuals at increased risk. Yang et al reported a comparable trend in a dataset encompassing various Asian populations, including Chinese, Japanese, Korean, Thai, Singaporean, and Malaysian groups³⁵. While the integration of various risk factors can enhance predictive capabilities, it also introduces complexity into model development, validation, and interpretation. Our research addresses these challenges and extends previous observations to include data from the Indonesian population, thereby contributing additional demographic variability into the analysis of risk factors across heterogeneous populations. In addition, emerging studies suggest that developing risk models with additional input data can substantially enhance predictive accuracy. In this context, the emergence of advanced models such as BRISK (Allman et al., 2023), which aggregates mammographic density, polygenic risk, and clinical factors, and BOADICEA³⁶, which incorporates a comprehensive range of inputs including detailed family history, genetic data, PRS, and lifestyle factors. Thus, there is potential to further enhance the accuracy of models in the Indonesian population through the inclusion of additional datasets.

In addition to evaluating AUCs for risk models, our study also includes an assessment of the genotyping accuracy of our risk prediction workflow. To this end, we utilized GIAB reference materials and focused the performance evaluation on the markers required for calculating PRS under the Mavaddat model. We determined the analytical sensitivity and specificity of our array genotyping workflow to be 99.25% (± 0.46) and 96.89% (± 0.5), respectively. Such evaluation is vital in establishing a clinical-grade testing workflow, as it ensures the accuracy of results inputted into the risk calculation software. Most importantly, it should be conducted with the target loci in mind. Given that PRS models encapsulate common variants from numerous genomic loci, which can vary significantly in number and nature between models and considering that different models might encompass a larger representation of SNPs or INDELS, genome-wide evaluation alone may not necessarily be representative of the performance at selected loci. Additionally, we assessed genotyping accuracy in BRCA1/2 genes using Horizon reference materials, emphasizing that such assessments, while challenging to conduct, should be pursued when possible.

In conclusion, our study underscores the efficacy of the Gail and Mavaddat models in predicting breast cancer risk in the Indonesian population, demonstrating a performance comparable to

studies conducted in other demographics. Furthermore, we illustrate that a combined risk model, which integrates clinical, polygenic and monogenic risk scores, excels in accuracy compared to single-factor models. The study serves as a preliminary yet promising exploration, as larger sample sizes will be required to fully capture the rich genetic diversity in Indonesia. The emergence of novel datasets and biobanks from population genomics initiatives like BGSi promises to facilitate further evaluation of risk models, and potentially foster the development of new models finely tuned to local populations. Beyond accuracy evaluations, the integration of personalized risk assessment into routine clinical practice requires a broader focus that also encompasses considerations of utility and cost-efficiency. While the practical application of enhanced breast cancer risk assessment models in hospital settings remains largely unexplored, pilot studies in other health domains show evidence that it could potentially foster behavioral changes, promoting risk-reducing behaviors among high-risk individuals³⁷. This could in turn significantly reduce the incidence of advanced-stage breast cancer cases and the associated healthcare costs^{12,36,38}. Moreover, this type of personalized risk assessment could be especially beneficial in regions such as Indonesia, where population-based screening is unavailable and where, given the population size, resources are limited, aiding in the identification of individuals who would benefit most from more frequent monitoring. Current global initiatives, such as “Our Future Health” in the UK³⁹ and the Genomes2Veterans study in the US⁴⁰, are leading the way in integrating personalized risk assessment in healthcare settings, thereby setting a precedent for further localized studies to emulate. Although still in its infancy, our collective efforts, in conjunction with others, mark the onset of a transformative era in risk assessment, steering towards a more personalized and proactive approach to healthcare.

Methods

An end-to-end workflow for personalized breast cancer risk assessment

As part of this study, we developed an end-to-end workflow for personalized breast cancer risk assessment. A visual representation of the workflow is provided in **Figure 1**, with details on the methods described below.

Pre-test consultation

Eligible female participants (women aged 25-75 who have never been diagnosed with breast cancer and have no known mutations in BRCA1 or BRCA2) initially undergo a pre-genetic consultation, either on-site or online, where they receive information about the test. After the consultation, they are asked to consent to the collection of buccal samples for genetic testing and to complete a questionnaire that gathers non-genetic breast cancer risk factors, as outlined in the Gail model (**Supplementary File 1**). Buccal samples are then collected using OraCollect (cat. no. DNA OCR-100, provided by DNA Genotek).

gDNA Extraction and genotyping

Genomic DNA (gDNA) is extracted using the Monarch® Genomic DNA Purification Kit (cat. no. T3010 from NEB). The extraction procedure adheres to the manufacturer's instructions, incorporating an additional dry-spin step at maximum speed for 1 minute following the second buffer washing step. The quality and concentration of the gDNA extracts are measured using BioDrop-μLITE. The acceptance criteria for DNA quality adhere to the manufacturer's guidelines for the extraction kit, specifically requiring absorbance ratios of A260/230 and A260/280 to be greater than 1.7, and a DNA yield exceeding 500 ng.

Array Genotyping

Genotyping is conducted using standard processing on the Illumina GSA chip (Infinium Global Screening Array-24 Kit) by Genomic Solidaritas Indonesia. Raw data files (IDAT files) are converted to VCF format using iiap-cli & GTcToVCF Illumina software (genome build GRCh37). Missing calls are inferred by performing imputation with Eagle2⁴¹ and minimac4⁴², using the 1000 Genomes project as the reference panel.

Calculation of clinical risk

The calculation of clinical risk is based on the Gail model¹³. Five-year absolute risk scores are determined using responses from the pre-test consultation questionnaire, which includes information on the patient's age, age at menarche and first full-term pregnancy, number of first-

degree relatives with breast cancer, history of breast biopsy, presence of breast biopsy with atypical hyperplasia, and ethnicity.

Calculation of polygenic risk

Genetic risk is assessed using the Mavaddat PRS model¹⁶. Initially, microarray results are subsetted to focus on the 313 markers specified in the model. Direct genotyping and imputation results are integrated, prioritizing microarray data, and supplementing with imputation results only when the INFO SCORE exceeds 0.8.

Subsequently, genotype calls are utilized for PRS calculation through PLINK⁴³. Briefly, this process involves computing a weighted average of alleles present in each individual's genetic profile across the 313 variants specified in the model. Missing variants are inferred using the --read-freq option and allele frequency data from the GNOMAD database⁴⁴. Next, the raw PRS scores from PLINK are standardized as Z-scores, using the mean and standard deviation from a Southeast Asian cohort (MEC study¹¹). These standardized scores are then adjusted for population structure according to methods outlined by Hao et al., 2022, employing a linear regression model that incorporates the first four principal components derived from the 1000 Genomes dataset²⁷. Ultimately, the ancestry-adjusted PRS are translated into 5-year absolute scores using established methods⁹, which factor in incidence and mortality data pertinent to the Indonesian population²⁸.

Calculation of monogenic risk

The BRCA1 and BRCA2 genes were selected as the target for monogenic risk calculations. All detected variants in these (based on direct genotyping from the Illumina GSA chip) genes were annotated using Nirvana 3.18.1⁴⁵. Following the annotation process, additional filtering was performed according to the following criteria: (i) the variant's significance is either pathogenic or likely pathogenic; (ii) it possesses a ClinVar review rating of ≥ 2 stars; (iii) there is no conflicting interpretation; (iv) it is a non-reference variant; and (v) it has a genotype quality score of ≥ 3 . The determination of the monogenic risk category is based on whether a pathogenic or likely pathogenic variant is detected in the sample.

Calculation of combined risk

Initially, individual risk factors are transformed into categorical outcomes in the following manner: 5-year absolute risk scores for clinical and polygenic risk are classified as either elevated or average, utilizing a 1.7% threshold, while monogenic risk is considered elevated if a pathogenic variant is identified. Following this, a unified risk category is determined by choosing the most elevated risk classification from the three inputs.

Post-test consultation

The risk assessment results are compiled into a personalized report that includes clinical and genetic risk scores and categories, combined risk categories, and customized health modification recommendations based on the test findings. Examples of these reports for both average and elevated risk individuals can be found in **Supplementary Files 2 and 3**. These risk reports are then presented to patients during a post-test consultation with an oncologist.

Workflow validation

To validate the accuracy of our risk prediction workflow, we conducted both pre-clinical and clinical validation studies. On the one hand, the pre-clinical validation study employed well-characterized reference materials from the Genome In a Bottle (GIAB) project, along with a mock dataset simulating responses to the clinical risk survey, to assess our ability to accurately genotype variants of interest and verify the correct implementation of the Gail model. On the other hand, clinical validation, executed as a case-control study, aimed to evaluate the predictive accuracy of the selected models (including both the clinical risk and PRS, as well as their combined risk assessment) specifically within the Indonesian population.

Pre-clinical validation

Confirming implementation of the Gail model

A pre-clinical validation study was conducted to assess the accuracy of our clinical risk prediction algorithm, which was developed based on the Gail model. This validation employed a mock dataset created without any ties to actual patients or individuals. The dataset consisted of manually generated clinical survey responses, encompassing a wide range of ethnicities, clinical risk factors, and risk outcomes. Using this mock dataset as input, we proceeded to calculate a clinical risk score using our algorithm. Simultaneously, the mock dataset was also analyzed using the NIH Breast Cancer Risk Assessment Tool (BRCAT) to determine the anticipated clinical risk score. Upon completing both analyses, a comparison was undertaken using Pearson correlation analysis.

Assessing genotyping accuracy in Mavaddat PRS markers

A separate validation study was conducted to assess the performance of our genotyping algorithm. The validation process employed Genome in a Bottle (GIAB) samples (HG001-005), with each being genotyped in duplicate. Each sample underwent processing through our data analysis pipeline to derive genotype calls at each of the 313 target sites. Resulting VCF files were compared against their respective truth sets. The accuracy of the genotyping was assessed on a per-sample basis by calculating various metrics, including:

- Callability: The percentage of loci successfully genotyped out of the 313 loci in the PRS model.
- Genotype concordance: The percentage of genotyped sites with a correct call.
- Analytical sensitivity: The percentage of variant sites correctly identified.
- Analytical specificity: The percentage of non-variant sites correctly identified.
- Precision: The percentage of variants correctly genotyped relative to the number of reported variants.

Additionally, we genotyped 18 additional 1KGP cell lines to facilitate a per-site assessment of variant calling accuracy. The truthset for this dataset consisted of 30X WGS results from the Registry of Open Data in AWS²⁷. The combined set of results, including 5 GIAB and 19 1KGP cell lines, covered 306 out of the 313 PRS loci. Each site was evaluated for concordance against the truthset across all samples and deemed concordant if the results were correct in more than 95% of the samples.

Comparative analysis of PRS against an established method

We validated the implementation of the Mavaddat PRS model in our algorithm through a comparative analysis with a genetic risk prediction tool from a third-party software company. We utilized a subset of the samples from the current study, which included 12 healthy individuals and 20 breast cancer patients. The evaluation was based on two predefined criteria: first, we measured the correlation between the polygenic risk scores; and second, we assessed the overlap in categorical outcomes with the phenotypes present in our cohort.

Assessing genotyping accuracy in BRCA1/2 genes

To assess genotyping accuracy in BRCA1 and BRCA2 genes, we utilized two distinct reference materials from Horizon (HD793 and HD794), each engineered to contain mutations in these genes, and evaluated a total of 26 genomic loci. Each sample was genotyped three times and processed through our data analysis pipeline to derive genotype calls at each target site. The resulting VCF files were compared against Horizon's verified mutations, and genotyping accuracy was assessed using the performance metrics introduced above (see "Assessing genotyping accuracy in Mavaddat PRS markers").

Clinical validation study

Study design and ethical approval

To assess the accuracy of our risk prediction workflow in a real-world setting, we initiated a case/control study (TRIP), during which healthy participants and breast cancer patients were recruited over a span of two years (from May 2021 to February 2023). This study received ethical approval from the MRCCC Siloam Hospitals IRB, under the approval number

005/EA/KEPKKRSMRCCC/X/2020. Amendments to the study protocol, including the inclusion of a larger sample size, have also been approved by the IRB, under the approval number 005/EA/KEPKKRSMRCCC/X/2022.

Sample size calculation

Power analysis was conducted to determine sample size of the study using Python's statsmodel module⁴⁶. We estimated the sample size with power analysis based on t-test for two independent groups. The effect size is calculated using Cohen's D formula:

$$d = \frac{\bar{x}_t - \bar{x}_c}{S_{pooled}}$$
$$S_{pooled} = \sqrt{\frac{(n_t - 1)S_t^2 + (n_c - 1)S_c^2}{n_t + n_c - 2}}$$

where d is effect size, \bar{x} is the mean of the PRS, S is the standard deviation, n is the number of samples, and the subscript t and c refers to the treatment and control groups respectively. The mean and standard deviation are based on literature³³. This calculation provided us with an effect size of 0.396. The estimated sample size for two-tailed test is calculated using the following formula:

$$n = \frac{2 \times (Z_{\alpha/2} + Z_{\beta})^2}{d^2}$$

where n is the sample size for each group, $Z_{\alpha/2}$ is the critical value of α and Z_{β} is the critical value of β . Based on this analysis, we estimated that the minimum sample size would be 101 samples for both case and control groups, or a total of 202 samples, assuming a power of 0.8. We recruited additional samples to minimize error and anticipate dropouts.

Patient recruitment and enrollment

The case/control study included both breast cancer patients and healthy individuals, provided they met the established eligibility criteria (see **Supplementary Table 4**). Breast cancer patients were assigned to the case group, while healthy participants were categorized into the control group. Individuals not affiliated with Indonesian ethnic groups or of Chinese-Indonesian descent were excluded from the study to align with the research's specific population focus. Additionally, participants who did not provide informed consent for participation and subsequent follow-up were also excluded from the study cohort.

Following the initiation of the recruitment process, we enlisted 191 female participants from MRCCC Siloam Hospitals Semanggi, both onsite and through online sessions via Zoom, to

partake in the breast cancer risk prediction study. An additional 141 participants were incorporated from a baseline study, with consent for the utilization of their remaining DNA for further studies concerning breast cancer. Out of 332 participants, there were 158 (47.59%) cases and 174 (52.41%) controls. This dataset was later narrowed down to 314 participants after excluding 18 (5.42%) due to loss to follow-up (n=1), withdrawal (n=1), and failure to meet the inclusion criteria (n=16). This number was further revised to 305 participants after identifying samples that did not meet the quality control criteria for analysis (**Figure 2**).

The final cohort comprised a total of 305 female participants, including 149 individuals (48.85%) diagnosed with breast cancer (cases) and 156 individuals (51.15%) without the condition (controls). Notably, the demographic distribution ultimately included 114 participants of Chinese lineage, consisting of 73 cases and 41 controls, as well as 191 participants of Indonesian heritage, encompassing 76 cases and 115 controls.

Statistical analysis

Comparing PRS and risk score distributions

An independent samples t-test was conducted to compare the clinical score, adjusted PRS, and genetic score between cases and controls. This test was utilized to determine whether significant differences existed between the two groups. Additionally, logistic regression analysis was performed to examine the relationship between the categorical outcome variables and the variables of interest, while controlling for the effects of age and ethnicity.

Calculation of area under the curve (AUC)

Receiver Operating Characteristics (ROC) analysis was conducted to assess the predictive performance of the clinical score, adjusted PRS, genetic score, and combined risk. The ROC curve, generated using the R package “pROC”⁴⁷, provided the area under the curve (AUC) which was used to quantify the overall discriminative ability of our models. To calculate the AUC for combined risk, we first listed a set of possible thresholds using pROC. For each threshold value, we applied the threshold to both the clinical and genetic scores to infer a categorical combined risk. We then calculated the sensitivity and specificity of each threshold. Finally, we plotted the ROC curve and calculated the AUC based on the sensitivity and specificity values.

Calculation of odds ratio (OR)

To assess the strength of the association between the dependent variable (cases and controls) and combined risk categories (elevated and average), a contingency table was created using the “epitools” package⁴⁸. The odds ratio was then calculated based on the contingency table using the “oddsratio” function, providing a measure of the association strength between the variables of interest.

References

1. Arnold M, Morgan E, Rungay H, Mafra A, Singh D, Laversanne M, et al. Current and future burden of breast cancer: Global statistics for 2020 and 2040. *The Breast*. 2022 Dec;66:15–23.
2. Gautama W. Breast Cancer in Indonesia in 2022: 30 Years of Marching in Place. *Indones J Cancer*. 2022 Apr 1;16(1):1.
3. Kemkes. Kanker Payudara Paling Banyak di Indonesia, Kemenkes Targetkan Pemerataan Layanan Kesehatan [Internet]. 2022 [cited 2023 Jul 12]. Available from: <https://www.kemkes.go.id/article/view/22020400002/health-care-equality-for-breast-cancer-patients.html>
4. American Cancer Society. Understanding a Breast Cancer Diagnosis [Internet]. Survival Rates for Breast Cancer. 2023 [cited 2023 Jul 12]. Available from: <https://www.cancer.org/cancer/types/breast-cancer/understanding-a-breast-cancer-diagnosis/breast-cancer-survival-rates.html>
5. Humphrey LL. Breast Cancer Screening: A Summary of the Evidence for the U.S. Preventive Services Task Force. *Ann Intern Med*. 2002 Sep 3;137(5_Part_1):347.
6. Oeffinger KC, Fontham ETH, Etzioni R, Herzig A, Michaelson JS, Shih YCT, et al. Breast Cancer Screening for Women at Average Risk: 2015 Guideline Update From the American Cancer Society. *JAMA*. 2015 Oct 20;314(15):1599.
7. Bae JM, Kim EH. Breast Density and Risk of Breast Cancer in Asian Women: A Meta-analysis of Observational Studies. *J Prev Med Pub Health*. 2016 Nov 30;49(6):367–75.
8. Choridah L, Icanervilia AV, De Wit MJM, Van Asselt ADI, Kurniawan WT, Fahmi YI, et al. Knowledge and Acceptance Towards Mammography as Breast Cancer Screening Tool Among Yogyakarta Women and Health Care Providers (Mammography Screening in Indonesia). *J Cancer Educ*. 2021 Jun;36(3):532–7.
9. Hao L, Kraft P, Berriz GF, Hynes ED, Koch C, Korategere V, Kumar P, et al. Development of a clinical polygenic risk score assay and reporting workflow. *Nat Med*. 2022 May;28(5):1006–13.
10. Kim G, Bahl M. Assessing Risk of Breast Cancer: A Review of Risk Prediction Models. *J Breast Imaging*. 2021 Mar 20;3(2):144–55.
11. Liu J, Ho PJ, Tan THL, Yeoh YS, Chew YJ, Mohamed Riza NK, et al. BREAst screening Tailored for HEr (BREATHE)—A study protocol on personalised risk-based breast cancer screening programme. Zheng Y, editor. *PLOS ONE*. 2022 Mar 31;17(3):e0265965.
12. Pashayan N, Morris S, Gilbert FJ, Pharoah PDP. Cost-effectiveness and Benefit-to-Harm Ratio of Risk-Stratified Screening for Breast Cancer: A Life-Table Model. *JAMA Oncol*. 2018 Nov 1;4(11):1504.

13. Gail MH, Brinton LA, Byar DP, Corle DK, Green SB, Schairer C, et al. Projecting Individualized Probabilities of Developing Breast Cancer for White Females Who Are Being Examined Annually. *JNCI J Natl Cancer Inst.* 1989 Dec 20;81(24):1879–86.
14. Mehrgou A, Akouchekian M. The importance of BRCA1 and BRCA2 genes mutations in breast cancer development. *Med J Islam Repub Iran.* 2016;30:369.
15. Ho PJ, Lim EH, Hartman M, Wong FY, Li J. Breast cancer risk stratification using genetic and non-genetic risk assessment tools for 246,142 women in the UK Biobank. *Genet Med.* 2023 Oct;25(10):100917.
16. Mavaddat N, Michailidou K, Dennis J, Lush M, Fachal L, Lee A, et al. Polygenic Risk Scores for Prediction of Breast Cancer and Breast Cancer Subtypes. *Am J Hum Genet.* 2019 Jan;104(1):21–34.
17. Martin AR, Gignoux CR, Walters RK, Wojcik GL, Neale BM, Gravel S, et al. Human Demographic History Impacts Genetic Risk Prediction across Diverse Populations. *Am J Hum Genet.* 2017 Apr 6;100(4):635–49.
18. Zook JM, McDaniel J, Olson ND, Wagner J, Parikh H, Heaton H, et al. An open resource for accurately benchmarking small variant and reference calls. *Nat Biotechnol.* 2019 May;37(5):561–6.
19. Introducing Revvity Mimix Reference Standards [Internet]. [cited 2023 Oct 9]. Available from: <https://horizondiscovery.com/en/reference-standards>
20. Gail M, Zhang F. National Cancer Institute [Internet]. BCRA R Package. 2019 [cited 2023 Jul 10]. Available from: <https://dceg.cancer.gov/tools/risk-assessment/bcra>
21. Chay WY, Ong WS, Tan PH, Jie Leo NQ, Ho GH, Wong CS, et al. Validation of the Gail model for predicting individual breast cancer risk in a prospective nationwide study of 28,104 Singapore women. *Breast Cancer Res.* 2012 Feb;14(1):R19.
22. Costantino JP, Gail MH, Pee D, Anderson S, Redmond CK, Benichou J, et al. Validation Studies for Models Projecting the Risk of Invasive and Total Breast Cancer Incidence. *JNCI J Natl Cancer Inst.* 1999 Sep 15;91(18):1541–8.
23. Gao F, Machin D, Chow KY, Sim YF, Duffy SW, Matchar DB, et al. Assessing risk of breast cancer in an ethnically South-East Asia population (results of a multiple ethnic groups study). *BMC Cancer.* 2012 Dec;12(1):529.
24. Wang X, Huang Y, Li L, Dai H, Song F, Chen K. Assessment of performance of the Gail model for predicting breast cancer risk: a systematic review and meta-analysis with trial sequential analysis. *Breast Cancer Res.* 2018 Dec;20(1):18.
25. Zhang L, Jie Z, Xu S, Zhang L, Guo X. Use of Receiver Operating Characteristic (ROC) Curve Analysis for Tyrer-Cuzick and Gail in Breast Cancer Screening in Jiangxi Province, China. *Med Sci Monit.* 2018 Aug 9;24:5528–32.

26. Index of Reference Samples GIAB Release [Internet]. Available from: <https://ftp-trace.ncbi.nlm.nih.gov/ReferenceSamples/giab/release/>
27. The 1000 Genomes Project Consortium, Corresponding authors, Auton A, Abecasis GR, Steering committee, Altshuler DM, et al. A global reference for human genetic variation. *Nature*. 2015 Oct 1;526(7571):68–74.
28. Ho WK, Tan MM, Mavaddat N, Tai MC, Mariapun S, Li J, et al. European polygenic risk score for prediction of breast cancer shows similar performance in Asian women. *Nat Commun*. 2020 Jul 31;11(1):3833.
29. Landrum MJ, Lee JM, Benson M, Brown GR, Chao C, Chitipiralla S, et al. ClinVar: improving access to variant interpretations and supporting evidence. *Nucleic Acids Res*. 2018 Jan 4;46(D1):D1062–7.
30. BRCA Germline I (gDNA) [Internet]. [cited 2023 Oct 9]. Available from: <https://horizondiscovery.com/en/reference-standards/products/brca-germline-i-gdna>
31. BRCA Germline II (gDNA) [Internet]. [cited 2023 Oct 9]. Available from: <https://horizondiscovery.com/en/reference-standards/products/brca-germline-ii-gdna>
32. Meng TW. Screening Rate for Breast Cancer [Internet]. 2020. Available from: <https://www.moh.gov.sg/news-highlights/details/screening-rate-for-breast-cancer#:~:text=5th%20Oct%202020&text=However%2C%20while%20the%20breast%20cancer,with%20primary%20level%20of%20education.>
33. Teo CT, Yeo YWS, Lee SC. Screening Mammography Behavior and Barriers in Singaporean Asian Women. *Am J Health Behav*. 2013 Sep 1;37(5):667–82.
34. Hurson AN, Pal Choudhury P, Gao C, Hüsing A, Eriksson M, Shi M, et al. Prospective evaluation of a breast-cancer risk model integrating classical risk factors and polygenic risk in 15 cohorts from six countries. *Int J Epidemiol*. 2022 Jan 6;50(6):1897–911.
35. Yang Y, Tao R, Shu X, Cai Q, Wen W, Gu K, et al. Incorporating Polygenic Risk Scores and Nongenetic Risk Factors for Breast Cancer Risk Prediction Among Asian Women. *JAMA Netw Open*. 2022 Mar 21;5(3):e2149030.
36. Lee A, Mavaddat N, Wilcox AN, Cunningham AP, Carver T, Hartley S, et al. BOADICEA: a comprehensive breast cancer risk prediction model incorporating genetic and nongenetic risk factors. *Genet Med*. 2019 Aug;21(8):1708–18.
37. Widén E, Junna N, Ruotsalainen S, Surakka I, Mars N, Ripatti P, et al. How Communicating Polygenic and Clinical Risk for Atherosclerotic Cardiovascular Disease Impacts Health Behavior: an Observational Follow-up Study. *Circ Genomic Precis Med* [Internet]. 2022 Apr [cited 2023 Sep 12];15(2). Available from: <https://www.ahajournals.org/doi/10.1161/CIRCGEN.121.003459>
38. Wong JZY, Chai JH, Yeoh YS, Mohamed Riza NK, Liu J, Teo YY, et al. Cost effectiveness analysis of a polygenic risk tailored breast cancer screening programme in Singapore. *BMC Health Serv Res*. 2021 Dec;21(1):379.

39. Our Future Health. Our Future Health [Internet]. Our Future Health: Let's prevent disease together. [cited 2023 Jul 12]. Available from: <https://ourfuturehealth.org.uk/>
40. Genomes2Veterans. Genomes2Veterans (G2V) Research Program [Internet]. Genomes2Veterans (G2V) Research Program. [cited 2023 Jul 12]. Available from: <https://www.genomes2people.org/research/genomes2veterans/>
41. Loh PR, Danecek P, Palamara PF, Fuchsberger C, A Reshef Y, K Finucane H, et al. Reference-based phasing using the Haplotype Reference Consortium panel. *Nat Genet.* 2016 Nov;48(11):1443–8.
42. Das S, Forer L, Schön herr S, Sidore C, Locke AE, Kwong A, et al. Next-generation genotype imputation service and methods. *Nat Genet.* 2016 Oct;48(10):1284–7.
43. Chang CC, Chow CC, Tellier LC, Vattikuti S, Purcell SM, Lee JJ. Second-generation PLINK: rising to the challenge of larger and richer datasets. *GigaScience.* 2015;4:7.
44. Karczewski KJ, Francioli LC, Tiao G, Cummings BB, Alföldi J, Wang Q, et al. The mutational constraint spectrum quantified from variation in 141,456 humans. *Nature.* 2020 May 28;581(7809):434–43.
45. Nirvana: Clinical-grade variant annotation [Internet]. [cited 2023 Oct 9]. Available from: <https://illumina.github.io/NirvanaDocumentation/>
46. Seabold S, Perktold J. statsmodels: Econometric and statistical modeling with python. Vol. 9th Python in Science Conference. 2010.
47. Robin X, Turck N, Hainard A, Tiberti N, Lisacek F, Sanchez JC, et al. pROC: an open-source package for R and S+ to analyze and compare ROC curves. *BMC Bioinformatics.* 2011 Dec;12(1):77.
48. Aragon TJ, Fay MP, Wollschlaeger D. epitools: Epidemiology Tools [Internet]. 2020 [cited 2023 Jun 13]. Available from: <https://cran.r-project.org/web/packages/epitools/epitools.pdf>

Acknowledgements

We would like to thank dr. Dismas A. Chaspuri, SpB of MRCCC Siloam Hospitals Semanggi for his assistance in recruitment by referring his patients to participate in this study. We would also thank Ns Ria and Ns Surtati for their assistance during the recruitment process.

Figures

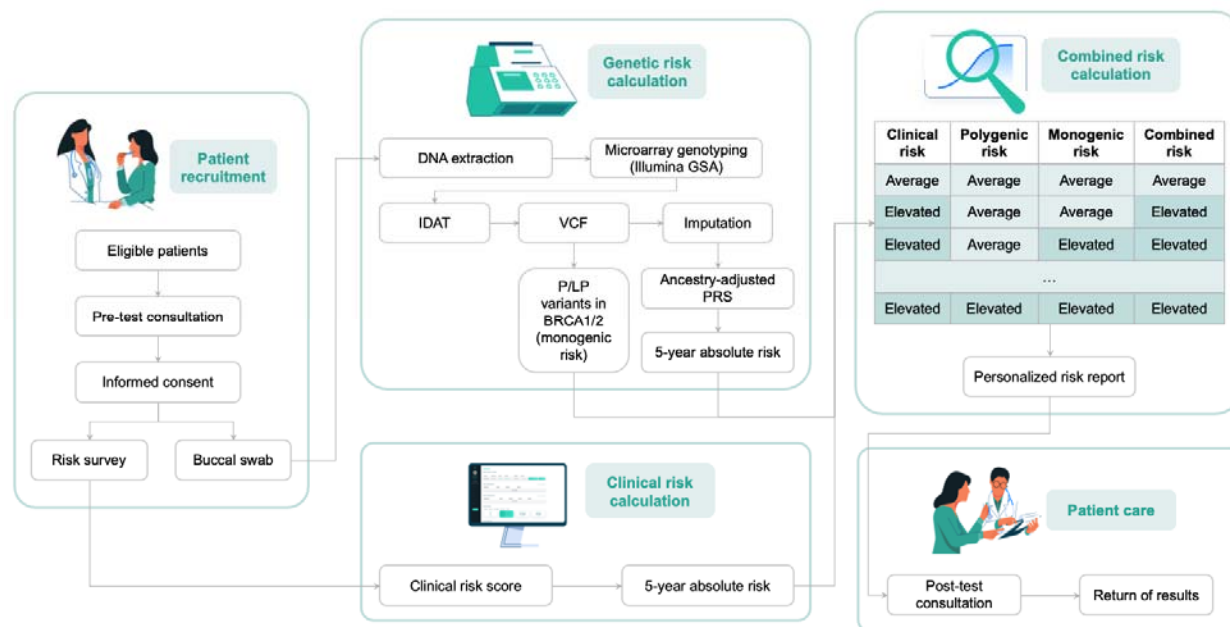


Figure 1: Personalized breast cancer risk assessment workflow. During the pre-test consultation, participants provide informed consent, complete a risk questionnaire, and submit a buccal sample. This sample undergoes array genotyping, followed by bioinformatic analysis to calculate ancestry-adjusted Polygenic Risk Scores (PRS) using the Mavaddat model and to identify known pathogenic variants in BRCA1/2. Concurrently, responses from the clinical risk survey are analyzed according to the Gail model. The single-factor risk results are then combined to determine a categorical risk outcome, which is communicated to participants in a personalized risk report during the post-test consultation.

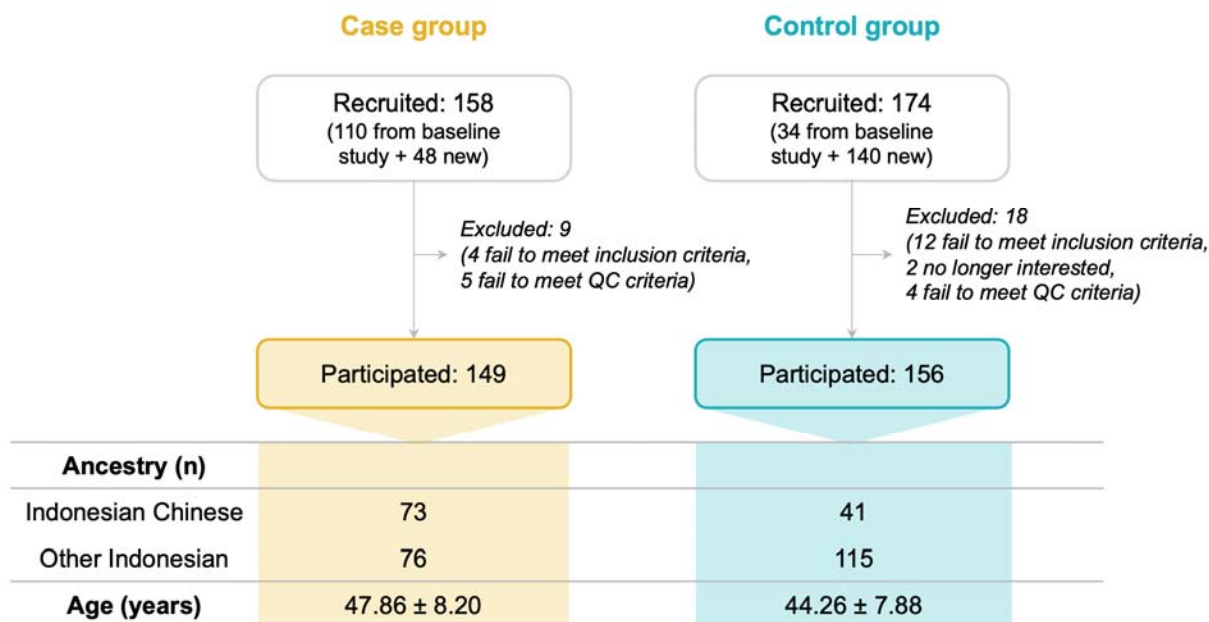


Figure 2: Participant recruitment and demographic breakdown in the clinical validation study. The clinical validation study employed a retrospective case/control cohort, consisting of female breast cancer patients (cases) and healthy females (controls), primarily recruited from MRCCC Siloam Hospitals Semanggi and other locations. Initially, 158 cases and 174 controls were enlisted. Following triage and biological sample quality control, 149 cases and 156 controls remained, totalling 305 eligible participants. The study maintained a balanced distribution with 48.85% of the participants in the case group and 51.15% in the control group. Demographic analysis revealed a diverse participant pool, encompassing 114 individuals of Indonesian Chinese descent and 191 from other Indonesian backgrounds. The mean ages were 47.86 years (± 8.20) for cases and 44.26 years (± 7.88) for controls.

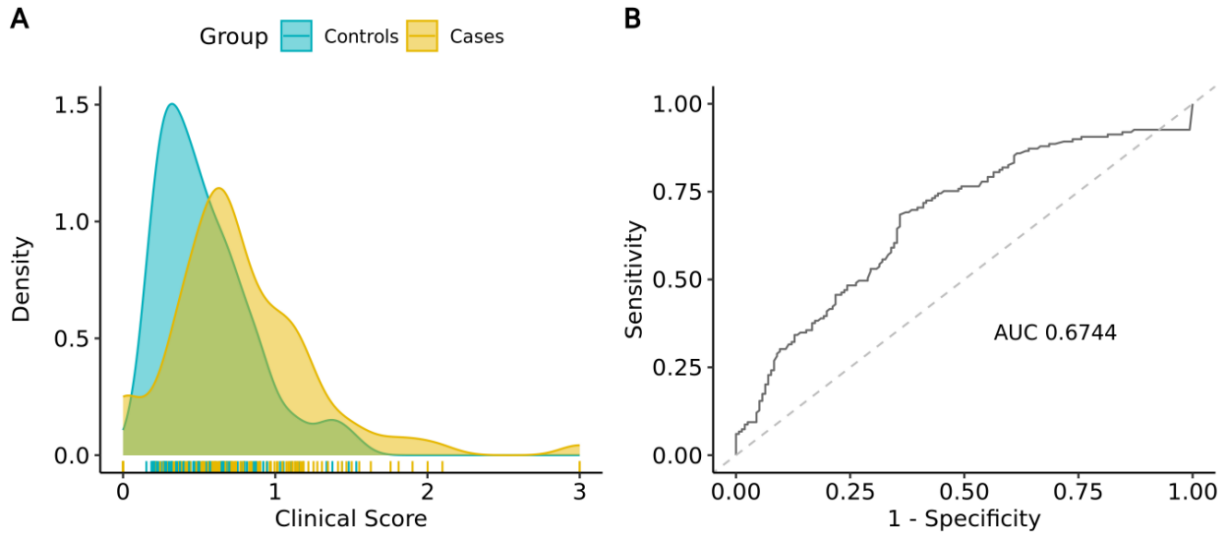


Figure 3: Distribution curve and predictive accuracy of the 5-year clinical risk score. (A) Distribution curve of the clinical risk score in cases vs. controls. Higher scores (0.76 ± 0.44) are observed in cases compared to controls (0.54 ± 0.31), with the difference being statistically significant (p -value: $5.16e-04$). (B) ROC curve for the clinical risk score. The observed AUC is 0.674.

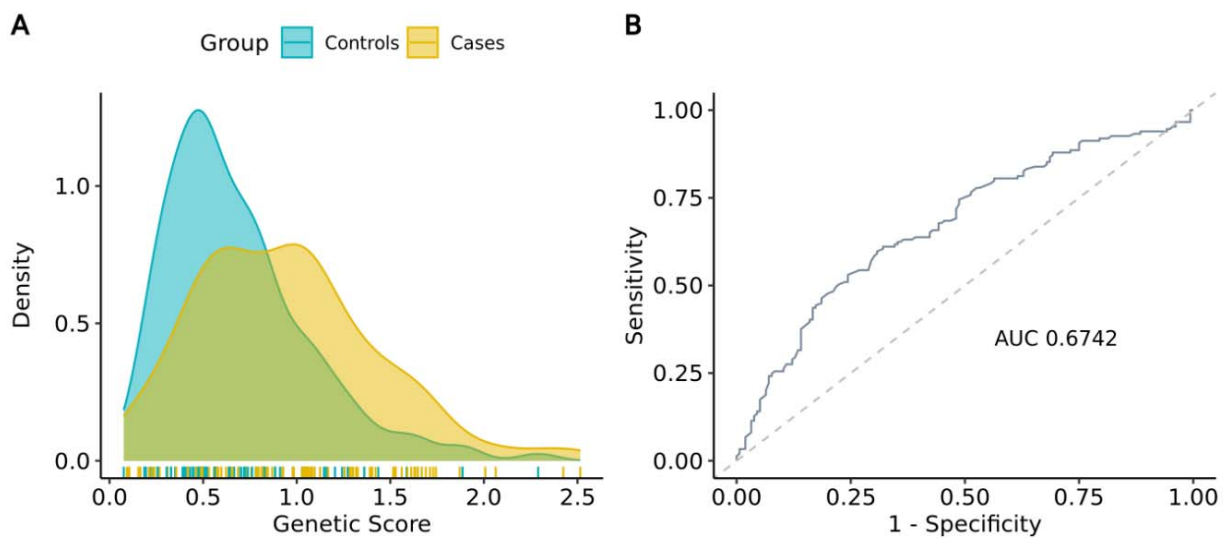


Figure 4: Distribution curve and predictive accuracy of the 5-year polygenic risk score. (A) Distribution curve of the genetic risk score in cases vs. controls. We observe higher scores in cases compared to controls (0.94 ± 0.48 vs. 0.68 ± 0.38 ; p -value: $1.28e-03$). (B) ROC curve for the genetic risk score. The observed AUC is 0.6742.

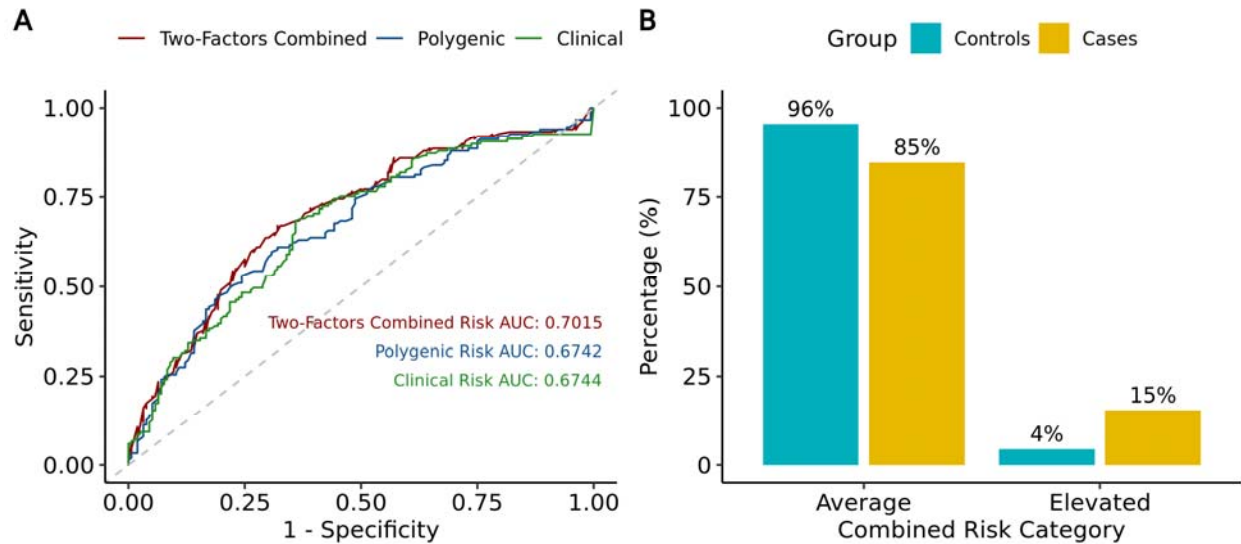
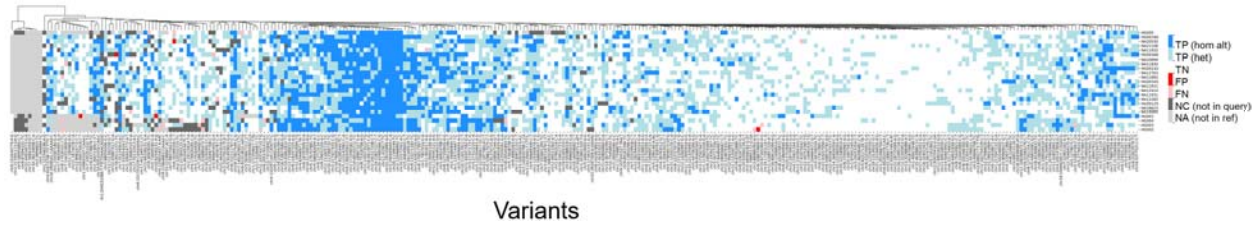
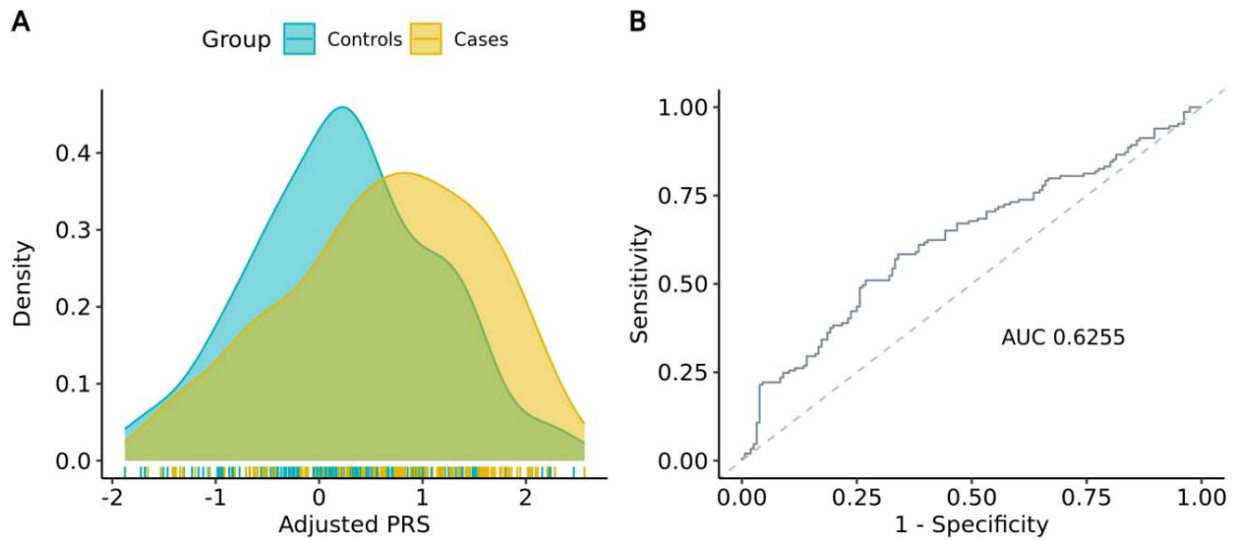


Figure 5: Combined risk outcomes and comparison of AUCs. (A) Comparison of ROC curves between clinical, polygenic and two-factor combined risk (clinical and polygenic) (B) Percentage of samples categorised as average or elevated based on three-factor combined risk (clinical, polygenic and monogenic).



Supplementary Figure 1: Per-site calling assessment of Mavaddat PRS loci. Heatmap depicting the genotyping concordance for 313 variants of interest associated with breast cancer risk prediction out of 23 samples. Concordance was assessed by comparison to reference calls based on whole genome sequencing of 1KGP or Genome-In-A-Bottle samples. TP (blue): True positive homozygous alternate call, TP (light blue): True positive heterozygous call, TN (white): true negative, FP (red): false positive, FN (pink): false negative, NC (dark grey): No call in the query sample, NA (light grey): No call in the truth set.



Supplementary Figure 2: Distribution curve and predictive accuracy of ancestry-adjusted PRS. (A) Distribution curve of adjusted PRS in cases vs. controls. Higher PRS were observed in the case group compared to the controls (0.63 ± 0.97 vs. 0.24 ± 0.88 ; p-value: 2.20×10^{-3}). (B) ROC curve for adjusted PRS. The observed AUC is 0.6255.

Tables

Table 1: Genotyping accuracy of Mavaddat PRS loci in GIAB samples (N=10).

Metric		MEAN	SD	MIN	MAX
Callability	95.37	2.29	93.29	99.68	
Genotype concordance	97.81	0.33	97.38	98.18	
Analytical sensitivity	99.25	0.46	98.66	100	
Analytical specificity	96.89	0.5	96.3	97.6	
Precision	99.58	0.57	99.64	100	
No-call rate	3.86	1.91	0.32	6.07	

Table 2: Genotyping accuracy of verified BRCA1/2 mutations in Horizon reference materials (N=6).

Metric	MEAN	SD	MIN	MAX
Callability	93.48	5.05	90.00	100.00
Genotype concordance	100.00	0.00	100.00	100.00
Analytical sensitivity	100.00	0.00	100.00	100.00
Analytical specificity	100.00	0.00	100.00	100.00
Precision	100.00	0.00	100.00	100.00
No-call rate	6.51	5.058	0	10.00

Supplementary Table 1: Detailed ancestry breakdown for participants in the clinical validation study.

Ethnicity	Case (n, %)	Control (n, %)
Chinese	73	41
Indonesian	75	116
Jawa	35	35
Sunda	6	14
Batak	6	14
Bugis	0	6
Flores	0	6
Bali	0	4
Minangkabau	3	1
Manado	3	2
Betawi	3	1
Ambon	0	3
Maluku	1	0
Padang	1	2
Tolaki	1	0
Melayu	1	0
Timor	1	0
Nias	1	0
Aceh	0	2
Kalimantan Tengah	0	1
Other Sumatera*	2	4
Madura	0	1
Multi ethnicity**	9	16
Others***	3	3

*Other Sumatera includes Palembang (1), Lampung (1), Komering Ulu (1), and others

**Multi ethnicity refers to participants with more than one ethnicity, which includes Jawa-Sunda (6), Betawi-Sunda (2), Jawa-Betawi (2), etc.

***Others refers to participants who did not specify the specific Indonesian ethnicity they derived from

Supplementary Table 2: Comparative analysis of genetic risk predictions with a third-party tool.

Sample ID	Phenotype	PRS in-house	Genetic risk category in-house	PRS third-party tool	Genetic risk category third-party tool
41001901220129_BC	CANCER	1.233911504	AVERAGE	1.328450579	AVERAGE
41001901220150_BC	CANCER	2.643061947	ELEVATED	2.315536285	ELEVATED
41001901220153_BC	CANCER	1.880442478	ELEVATED	1.261834573	AVERAGE
41001901222079_BC	CANCER	2.305097345	ELEVATED	2.205859718	ELEVATED
41001901222094_BC	CANCER	2.306477876	ELEVATED	0.986018963	AVERAGE
41001901222177_BC	CANCER	-1.438454867	AVERAGE	-1.733377778	AVERAGE
41001901222179_BC	CANCER	2.14980531	ELEVATED	-0.465485248	AVERAGE
41001901222199_BC	CANCER	1.029750442	AVERAGE	0.308784296	AVERAGE
41001901222200_BC	CANCER	2.31539823	ELEVATED	-0.469953448	AVERAGE
41001901222272_bc	CANCER	1.513437168	AVERAGE	1.308739488	AVERAGE
41001901222278_BC	CANCER	0.637667257	AVERAGE	0.693980954	AVERAGE
41001901222285_BC	CANCER	0.423437168	AVERAGE	0.251828443	AVERAGE
41001901222296_BC	CANCER	1.803911504	AVERAGE	1.885205009	ELEVATED
41001901222389_BC	CANCER	2.103327434	ELEVATED	-0.305676435	AVERAGE
41210853008755_BC	NORMAL	1.431745133	AVERAGE	0.917035367	AVERAGE
41210853008783_BC	NORMAL	2.140548673	ELEVATED	1.881677965	ELEVATED
41210853015045_BC	CANCER	1.654389381	AVERAGE	0.9732685	AVERAGE
41210853015093_BC	NORMAL	0.177699115	AVERAGE	-0.478522053	AVERAGE
41210853015147_BC	NORMAL	0.492143363	AVERAGE	0.581812225	AVERAGE
41210853016184_BC	NORMAL	2.28780531	ELEVATED	1.906911005	ELEVATED
41210853016186_BC	CANCER	1.83920354	ELEVATED	1.424638125	AVERAGE
41210853016189_BC	CANCER	-0.361402655	AVERAGE	-0.726921715	AVERAGE
41210853016254_BC	CANCER	2.133504425	ELEVATED	1.579791975	ELEVATED
41210853016290_bc	NORMAL	-0.731976991	AVERAGE	-0.628195591	AVERAGE
41210853016297_BC	NORMAL	2.261840708	AVERAGE	1.888042727	ELEVATED

41210853016318_BC	NORMAL	-0.211773982	AVERAGE	-1.888782596	AVERAGE
41210853016330_BC	NORMAL	1.495254867	AVERAGE	1.25358441	AVERAGE
41210853016336_bc	NORMAL	-0.290918053	AVERAGE	-1.279861282	AVERAGE
41210853016343_BC	NORMAL	2.309681416	ELEVATED	2.371723913	ELEVATED
41210853018000_BC	CANCER	2.188743363	ELEVATED	1.054420291	AVERAGE
41210853018727_BC	CANCER	1.464444248	AVERAGE	0.873173875	AVERAGE
41210853018768_BC	NORMAL	0.148824779	AVERAGE	-0.486573454	AVERAGE

Supplementary Table 3: Pathogenic mutations in BRCA1/2 detected in individuals of the study cohort.

Sample ID	Gene	Variant
41001901220141_BC	BRCA2	NC_000013.10:g.32900253del
41001901222134_BC	BRCA2	NC_000013.10:g.32911683C>G
41001901222172_BC	BRCA2	NC_000013.10:g.32954279dup
41001901222179_BC	BRCA2	NC_000013.10:g.32900253del
41001901222199_BC	BRCA2	NC_000013.10:g.32903583_32903584del
41001901222199_BC	BRCA2	NC_000013.10:g.32912271del
41001901222276_BC	BRCA2	NC_000013.10:g.32911693del
41001901223762_bc	BRCA2	NC_000013.10:g.32945167del
41020010504567_BC	BRCA2	NC_000013.10:g.32915235_32915247del
41020010504567_BC	BRCA2	NC_000013.10:g.32915245_32915246del
41210853015036_BC	BRCA2	NC_000013.10:g.32900253del
41210853016075_bc	BRCA2	NC_000013.10:g.32936794_32936795insC
41210853016167_BC	BRCA2	NC_000013.10:g.32915118_32915119del
41210853016255_BC	BRCA2	NC_000013.10:g.32900253del
41210853016296_BC	BRCA2	NC_000013.10:g.32914068_32914071del
41210853018027_BC	BRCA2	NC_000013.10:g.32953960T>G

Supplementary Table 4: Inclusion and exclusion criteria for the clinical validation study.

	Control Group	Case Group
Gender	Female	
Age	35 – 75 years old	
Breast cancer status	<ul style="list-style-type: none"> <input type="checkbox"/> Had never ever been diagnosed with breast cancer <input type="checkbox"/> Did not experience any symptoms related to breast cancer <input type="checkbox"/> Without first-degree relationship with breast cancer case. 	<ul style="list-style-type: none"> <input type="checkbox"/> Had ever been diagnosed with breast cancer <input type="checkbox"/> With or without first-degree relationship with breast cancer case.
Ovarian cancer status	Without family history of ovarian cancer	With or without family history of ovarian cancer

Supplementary Files

Supplementary File 1. Clinical risk questionnaire. This questionnaire is administered to study participants after obtaining their informed consent.

Supplementary File 2. Example of personalized risk report for an individual with average risk. Patients will be provided with a comprehensive report delineating their average risk of developing breast cancer. This report includes an analysis of both genetic and clinical risk factors and offers guidance on steps that can be taken after the risk assessment.

Supplementary File 3. Example of a personalized risk report for an individual with elevated risk. Similar to Supplementary File 2, the following report is customized for individuals exhibiting an elevated risk. The interpretation of this report is to be conducted under the guidance of a medical professional.

Disclaimer*

Images of individuals included in the example report are models specifically incorporated as part of the report design for illustrative purposes. Furthermore, we emphasize that all patient information is entirely fabricated for similar reasons.