

1 Transferability of a European-derived Alzheimer's Disease Genetic 2 Risk Score across Multi-Ancestry Populations.

3
4 Aude Nicolas¹, Benjamin Grenier-Boley¹, Richard Sherva^{2,3}, Yoontae Kim⁴, Masataka
5 Kikuchi⁵, Itziar de Rojas^{6,7}, Carolina Dalmasso^{8,9}, Xiaopu Zhou^{10,11,12}, Yann Le Guen^{13,14},
6 Carlos E Arboleda-Bustos¹⁵, Maria Aparecida Camargos Bicalho^{16,17,18}, Maëlenn Guerchet¹⁹,
7 Sven van der Lee^{20,21}, Monica Goss²², Atahualpa Castillo²³, Céline Bellenguez¹, Fahri
8 Küçükali^{24,25}, Claudia Satizabal Barrera^{22,26,27}, Bernard Fongang^{22,28,29}, Qiong yang^{26,27}, Oliver
9 Peters^{30,31}, Anja Schneider^{32,33}, Martin Dichgans^{34,35,36}, Dan Rujescu³⁷, Norbert Scherbaum³⁸,
10 Jürgen Deckert³⁹, Steffi Riedel-Heller⁴⁰, Lucrezia Hausner⁴¹, Laura Molina Porcel^{42,43}, Emrah
11 Düzél^{44,45}, Timo Grimmer⁴⁶, Jens Wiltfang^{47,48,49}, Stefanie Heilmann-Heimbach⁵⁰, Susanne
12 Moebus⁵¹, Thomas Tegos⁵², Nikolaos Scarmeas^{53,54}, Oriol Dols-Icardo^{55,7}, Fermin
13 Moreno^{56,7,57}, Jordi Pérez-Tur^{58,7}, María J. Bullido^{59,7,60,61}, Pau Pastor^{62,63}, Raquel Sánchez-
14 Valle⁶⁴, Victoria Álvarez^{65,66}, Han Cao¹⁰, Nancy Y. Ip^{10,11,12}, Amy K. Y. Fu^{10,11,12}, Fanny C. F.
15 Ip^{11,12}, Natividad Olivar⁶⁷, Carolina Muchnik⁶⁷, Carolina Cuesta⁶⁸, Lorenzo Campanelli⁶⁹,
16 Patricia Solis⁷⁰, Daniel Gustavo Politis⁶⁸, Silvia Kochen⁷⁰, Luis Ignacio Brusco⁶⁷, Mercè
17 Boada^{71,7}, Pablo García-González⁷¹, Raquel Puerta⁷¹, Pablo Mir^{72,7}, Luis M Real^{73,74,7}, Gerard
18 Piñol-Ripoll^{75,76}, Jose María García-Alberca^{77,7}, Jose Luís Royo⁷⁸, Eloy Rodríguez-
19 Rodríguez^{79,7}, Hilkka Soininen⁸⁰, Sami Heikkinen⁸¹, Alexandre de Mendonça⁸², Shima
20 Mehrabian⁸³, Latchezar Traykov⁸⁴, Jakob Hort^{85,86}, Martin Vyhnaek^{85,86}, Katrine Laura
21 Rasmussen^{87,88}, Jesper Qvist Thomassen⁸⁷, Yolande A.L. Pijnenburg²⁰, Henne Holstege^{20,89},
22 John van Swieten⁹⁰, Inez Ramakers⁹¹, Frans Verhey⁹¹, Aad van der Lugt⁹², Philip
23 Scheltens²⁰, Jenny Ortega-Rojas¹⁵, Ana Gabriela Concha Mera¹⁵, Maria F. Mahecha¹⁵,
24 Rodrogo Pardo¹⁵, Gonzalo Arboleda¹⁵, Caroline Graff⁹³, Goran Papenberg⁹⁴, Vilmantas
25 Giedraitis⁹⁵, Anne Boland⁹⁶, Jean-François Deleuze⁹⁶, Luiz Armando de Marco^{97,17}, Edgar
26 Nunes de Moraes^{16,18}, Bernardo de Mattos Viana^{98,17,99}, Marco Túlio Gualberto Cintra^{16,18},
27 Anthony Grsiwold¹⁰⁰, Tatiana Forund¹⁰¹, Carlos Cruchaga^{102,103}, Jonathan Haines¹⁰⁴, Lindsay
28 Farrer^{105,106,107,108,109}, Anita DeStefano¹¹⁰, Ellen Wijsman^{111,112,113}, Richard Mayeux^{114,115},
29 Margaret Pericak-Vance^{100,116}, Brian Kunkle¹⁰⁰, Alison Goate¹¹⁷, Gerard D. Schellenberg¹¹⁸,
30 Badri Vardarajan^{114,115,119}, Li-San Wang¹¹⁸, Yuk Yee Leung¹¹⁸, Clifton Dalgard¹²⁰, Gael
31 Nicolas¹²¹, David Wallon¹²¹, Carole Dufouil^{122,123}, Florence Pasquier¹²⁴, Olivier Hanon¹²⁵,
32 Stéphanie Debette^{126,127}, Edna Grünblatt^{128,129,130}, Julius Popp^{131,132,133}, Bárbara Angel^{134,135},
33 Sergio Golger^{136,137}, Maria Victoria Chacon¹³⁶, Rafael Aranguiz^{136,138}, Paulina Orellana^{139,140},
34 Andrea Slachevsky^{139,141}, Christian Gonzalez-Billault¹³⁹, Cecilia Albala^{134,142}, Patricio
35 Fuentes^{143,144}, Tenielle Porter^{145,146,147}, Simon M Laws^{145,146,147}, Perminder Sachdev¹⁴⁸, Karen
36 Mather¹⁴⁸, Richard L. Hauger^{149,150}, Victoria Merritt^{151,152,153}, Matthew Panizzon^{152,154,153}, Rui
37 Zhang², Michael Gaziano^{155,156}, Roberta Ghidoni¹⁵⁷, Daniela Galimberti^{158,159}, Beatrice
38 Arosio¹⁶⁰, Patrizia Mecocci^{161,162}, Vincenzo Solfrizzi¹⁶³, Lucilla Parnetti¹⁶⁴, Alessio
39 Squassina¹⁶⁵, Lucio Tremolizzo¹⁶⁶, Barbara Borroni^{167,168}, Benedetta Nacmias^{169,170}, Paolo
40 Caffarra¹⁷¹, Davide Seripa¹⁷², Innocenzo Rainero¹⁷³, Antonio Daniele^{174,175}, Fabrizio Piras¹⁷⁶,
41 Akinori Miyashita¹⁷⁷, Norikazu Hara¹⁷⁷, Kouichi Ozaki¹⁷⁸, Shumpei Niida¹⁷⁸, Julie
42 Williams^{179,23}, Carlo Masullo¹⁸⁰, Philippe Amouyel¹⁸⁰, Pierre-Marie Preux¹⁹, Pascal
43 Mbelesso^{19,181}, Bébène Bandzouzi¹⁸², Andy Saykin^{183,101}, Frank Jessen^{184,32,185}, Patrick
44 Kehoe¹⁸⁶, Cornelia Van Duijn^{187,188}, Jungsoo Gim⁴, Nesrine Ben Salem¹⁸⁹, Ruth Frikke-
45 Schmidt^{87,88}, Lofti Cherni^{189,190}, Michael D. Greicius¹³, Magda Tzolaki^{52,190}, Pascual Sánchez-
46 Juan^{191,7}, Marco Aurélio Romano Silva^{98,17}, Kristel Slegers^{24,25}, Martin Ingelsson^{192,193,194},
47 Jean-François Dartigues¹⁹⁵, Sudha Seshadri^{22,26,27}, Giacomina Rossi¹⁹⁶, Laura Morelli⁶⁹,
48 Mikko Hiltunen⁸¹, Rebecca Sims²³, Wiesje van der Flier²⁰, Ole Andreassen^{197,198}, Humberto
49 Arboleda¹⁵, Valentina Escott-Price^{199,179}, Agustín Ruiz^{200,7}, Kun Ho Lee⁴, Takeshi Ikeuchi¹⁷⁷,
50 Alfredo Ramirez^{8,201,202,32}, Mark Logue^{203,204,205,206}, Jean-Charles Lambert¹

51 Correspondence

52 Jean-Charles.lambert@pasteur-lille.fr

53 NOTE: This preprint reports new research that has not been certified by peer review and should not be used to guide clinical practice.

- 55 ¹Univ. Lille, Inserm, CHU Lille, Institut Pasteur de Lille, U1167-RID-AGE facteurs de risque et déterminants
56 moléculaires des maladies liées au vieillissement, Lille, France
- 57 ²National Center for PTSD, Behavioral Sciences Division, VA Boston Healthcare System, Boston, MA, USA
- 58 ³Biomedical genetics/Department of Medicine, Boston University Chobanian & Avedisian School of Medicine,
59 Boston, MA, USA
- 60 ⁴BK FOUR Department of Integrative Biological Sciences, Chosun University, Gwangju, Republic of Korea
- 61 ⁵University of Tokyo, Graduate School of Frontier Science, Japan
- 62 ⁶Research Center and Memory Clinic, ACE Alzheimer Center Barcelona. Universitat Internacional de Catalunya,
63 Spain
- 64 ⁷CIBERNED, Network Center for Biomedical Research in Neurodegenerative Diseases, National Institute of
65 Health Carlos III, Madrid, Spain
- 66 ⁸Division of Neurogenetics and Molecular Psychiatry, Department of Psychiatry and Psychotherapy, Faculty of
67 Medicine and University Hospital Cologne, University of Cologne, Cologne, Germany
- 68 ⁹Estudios en Neurociencias y Sistemas Complejos (ENyS) CONICET-HEC-UNAJ, Argentina
- 69 ¹⁰Division of Life Science, State Key Laboratory of Molecular Neuroscience, Molecular Neuroscience Center, The
70 Hong Kong University of Science and Technology, Clear Water Bay, Kowloon, Hong Kong, China
- 71 ¹¹Hong Kong Center for Neurodegenerative Diseases, Hong Kong Science Park, Hong Kong, China
- 72 ¹²Guangdong Provincial Key Laboratory of Brain Science, Disease and Drug Development, HKUST, China
73 Shenzhen Research Institute, Shenzhen–Hong Kong Institute of Brain Science, Shenzhen, Guangdong 518057
74 China
- 75 ¹³Department of Neurology and Neurological Sciences, Stanford University School of Medicine, Stanford, CA,
76 USA
- 77 ¹⁴Institut du Cerveau - Paris Brain Institute - ICM, Paris, France
- 78 ¹⁵Neuroscience and Cell Death Research Groups, Medical School and Genetic Institute, Universidad Nacional de
79 Colombia, Bogota, Colombia
- 80 ¹⁶Department of Clinical Medicine, Federal University of Minas Gerais (UFMG) Belo Horizonte, Minas Geraes,
81 Brazil
- 82 ¹⁷National Institute of Science and Technology (INCT) Neurotec R, Federal University of Minas Geraes, Belo
83 Horizonte, Minas Geraes, Brazil
- 84 ¹⁸Geriatrics Service of the University Hospital, Federal University of Minas Gerais, Belo Horizonte, Minas Geraes,
85 Brazil
- 86 ¹⁹Inserm U1094, IRD UMR270, Univ. Limoges, CHU Limoges, EpiMaCT - Epidemiology of chronic diseases in
87 tropical zone, Institute of Epidemiology and Tropical Neurology, Omega Health, Limoges, France
- 88 ²⁰Alzheimer Center Amsterdam, Department of Neurology, Amsterdam Neuroscience, Vrije Universiteit
89 Amsterdam, Amsterdam UMC, Amsterdam, The Netherlands
- 90 ²¹Department of Complex Trait Genetics, Center for Neurogenomics and Cognitive Research, Amsterdam
91 Neuroscience, Vrije University, Amsterdam, The Netherlands.
- 92 ²²Glenn Biggs Institute for Alzheimer's and Neurodegenerative Diseases, San Antonio, TX, USA
- 93 ²³Division of Psychological Medicine and Clinical Neuroscience, School of Medicine, Cardiff University, Wales, UK
- 94 ²⁴Complex Genetics of Alzheimer's Disease Group, VIB Center for Molecular Neurology, VIB, Antwerp, Belgium
- 95 ²⁵Department of Biomedical Sciences, University of Antwerp, Antwerp, Belgium
- 96 ²⁶Boston University and the NHLBI's Framingham Heart Study, Boston, MA, USA
- 97 ²⁷Department of Neurology, Boston University School of Medicine, Boston, MA, USA
- 98 ²⁸Department of Biochemistry and Structural Biology, University of Texas Health Science Center, San Antonio,
99 TX, USA
- 100 ²⁹Department of Population Health Sciences, University of Texas Health Science Center, San Antonio, TX, USA
- 101 ³⁰German Center for Neurodegenerative Diseases (DZNE), Berlin, Germany
- 102 ³¹Charité – Universitätsmedizin Berlin, corporate member of Freie Universität Berlin, Humboldt-Universität zu
103 Berlin, and Berlin Institute of Health, Institute of Psychiatry and Psychotherapy, Berlin, Germany
- 104 ³²German Center for Neurodegenerative Diseases (DZNE), Bonn, Germany
- 105 ³³Department for Neurodegenerative Diseases and Geriatric Psychiatry, University Hospital Bonn, Venusberg-
106 Campus 1, 53127 Bonn, Germany
- 107 ³⁴Institute for Stroke and Dementia Research (ISD), University Hospital, LMU Munich, Munich, Germany.
- 108 ³⁵German Center for Neurodegenerative Diseases (DZNE), Munich, Germany
- 109 ³⁶Munich Cluster for Systems Neurology (SyNergy), Munich, Germany
- 110 ³⁷Department of Psychiatry and Comprehensive Center of Neuroscience and Mental Health, Medical University of
111 Vienna, Vienna, Austria

- 112 ³⁸Department of Psychiatry and Psychotherapy, LVR-Klinikum Essen, University of Duisburg-Essen, Germany
113 Medical Faculty, Germany
- 114 ³⁹Department of Psychiatry, Psychosomatics and Psychotherapy, Center of Mental Health, University Hospital of
115 Würzburg, Germany
- 116 ⁴⁰Institute of Social Medicine, Occupational Health and Public Health, University of Leipzig, 04103 Leipzig,
117 Germany.
- 118 ⁴¹Department of Geriatric Psychiatry, Central Institute for Mental Health Mannheim, Faculty Mannheim, University
119 of Heidelberg, Germany
- 120 ⁴²Neurological Tissue Bank - Biobanc- Hospital Clinic -FRCB - IDIBAPS, Barcelona, Spain
- 121 ⁴³Alzheimer's disease and other cognitive disorders Unit. Neurology Department, Hospital Clinic, Barcelona,
122 Spain
- 123 ⁴⁴German Center for Neurodegenerative Diseases (DZNE), Magdeburg, Germany
- 124 ⁴⁵Institute of Cognitive Neurology and Dementia Research (IKND), Otto-von-Guericke University, Magdeburg,
125 Germany
- 126 ⁴⁶Center for Cognitive Disorders, Department of Psychiatry and Psychotherapy, Technical University of Munich,
127 School of Medicine, Munich, Germany
- 128 ⁴⁷Department of Psychiatry and Psychotherapy, University Medical Center Goettingen, Goettingen, Germany
- 129 ⁴⁸German Center for Neurodegenerative Diseases (DZNE), Goettingen, Germany
- 130 ⁴⁹Medical Science Department, iBiMED, Aveiro, Portugal
- 131 ⁵⁰Institute of Human Genetics, University of Bonn, School of Medicine & University Hospital Bonn, Bonn,
132 Germany
- 133 ⁵¹Institute for Urban Public Health, University Hospital Essen, University Duisburg-Essen, Germany
- 134 ⁵²1st Department of Neurology, Medical school, Aristotle University of Thessaloniki, Thessaloniki, Makedonia,
135 Greece
- 136 ⁵³1st Department of Neurology, Aiginition Hospital, National and Kapodistrian University of Athens, Medical
137 School, Greece
- 138 ⁵⁴Department of Neurology, Columbia University, New York, NY, USA
- 139 ⁵⁵Genetics of Neurodegenerative Diseases Unit IIB Sant Pau, Barcelona, Spain
- 140 ⁵⁶Department of Neurology. Hospital Universitario Donostia. San Sebastian, Spain
- 141 ⁵⁷Neurosciences Area. Instituto Biogipuzkoa. San Sebastian, Spain
- 142 ⁵⁸Unitat de Genètica Molecular, Institut de Biomedicina de València-CSIC, Valencia, Spain
- 143 ⁵⁹Centro de Biología Molecular Severo Ochoa (UAM-CSIC), Spain
- 144 ⁶⁰Instituto de Investigación Sanitaria 'Hospital la Paz' (IdIPaz), Madrid, Spain
- 145 ⁶¹Universidad Autónoma de Madrid
- 146 ⁶²Unit of Neurodegenerative diseases, Department of Neurology, University Hospital Germans Trias i Pujol,
147 Badalona, Barcelona, Spain
- 148 ⁶³The Germans Trias i Pujol Research Institute (IGTP), Badalona, Barcelona, Spain
- 149 ⁶⁴Alzheimer's disease and other cognitive disorders unit. Service of Neurology. Hospital Clínic of Barcelona.
150 Institut d'Investigacions Biomèdiques August Pi i Sunyer, University of Barcelona, Barcelona, Spain
- 151 ⁶⁵Laboratorio de Genética. Hospital Universitario Central de Asturias, Oviedo, Spain
- 152 ⁶⁶Instituto de Investigación Sanitaria del Principado de Asturias (ISPA), Spain
- 153 ⁶⁷Center of Neuropsychiatry and Behavior Neurology, School of Medicine, University of Buenos Aires, Argentina
- 154 ⁶⁸Hospital Interzonal General de Agudos-Eva Perón, Argentina
- 155 ⁶⁹Laboratory of Brain Aging and Neurodegeneration. Fundacion Instituto Leloir-IIBBA, Argentina
- 156 ⁷⁰Studies in Neuroscience and Complex Systems Unit-CONICET-HEC-UNAJ, Argentina
- 157 ⁷¹Research Center and Memory clinic. ACE Alzheimer Center Barcelona, Universitat Internacional de Catalunya,
158 Spain
- 159 ⁷²Unidad de Trastornos del Movimiento, Servicio de Neurología y Neurofisiología. Instituto de Biomedicina de
160 Sevilla (IBiS), Hospital Universitario Virgen del Rocío/CSIC/Universidad de Sevilla, Seville, Spain
- 161 ⁷³Instituto de Biomedicina de Sevilla, IBiS/Hospital Universitario Virgen de Valme, Spain
- 162 ⁷⁴Departamento de Bioquímica Médica, Biología Molecular e Inmunología. Facultad de Medicina. Universidad de
163 Sevilla. Sevilla, Spain
- 164 ⁷⁵Unitat Trastorns Cognitius, Hospital Universitari Santa Maria de Lleida, Lleida, Spain
- 165 ⁷⁶Institut de Recerca Biomèdica de Lleida (IRBLleida), Lleida, Spain
- 166 ⁷⁷Alzheimer Research Center & Memory Clinic, Andalusian Institute for Neuroscience, Málaga, Spain.
- 167 ⁷⁸Departamento de Especialidades Quirúrgicas, Bioquímica e Inmunología. Facultad de Medicina. Universidad de
168 Málaga. Málaga, Spain

- 169 ⁷⁹Neurology Service, Marqués de Valdecilla University Hospital (University of Cantabria and IDIVAL), Santander,
170 Spain.
- 171 ⁸⁰Institute of Clinical Medicine - Neurology, University of Eastern Finland, Finland
- 172 ⁸¹Institute of Biomedicine, University of Eastern Finland, Finland
- 173 ⁸²Faculty of Medicine, University of Lisbon, Portugal
- 174 ⁸³Clinic of Neurology, UH "Alexandrovska", Medical University - Sofia, Sofia, Bulgaria
- 175 ⁸⁴Department of Neurology, UH "Alexandrovska", Medical University, Sofia, Bulgaria
- 176 ⁸⁵Memory Clinic, Department of Neurology, Charles University, 2nd Faculty of Medicine and Motol University
177 Hospital, Czech Republic
- 178 ⁸⁶International Clinical Research Center, St. Anne's University Hospital Brno, Brno, Czech Republic
- 179 ⁸⁷Department of Clinical Biochemistry, Copenhagen University Hospital - Rigshospitalet, Copenhagen, Denmark
- 180 ⁸⁸Department of Clinical Medicine, University of Copenhagen, Copenhagen, Denmark
- 181 ⁸⁹Department of Clinical Genetics, VU University Medical Centre, Amsterdam, The Netherlands
- 182 ⁹⁰Department of Neurology, ErasmusMC, the Netherlands
- 183 ⁹¹Maastricht University, Department of Psychiatry & Neuropsychologie, Alzheimer Center Limburg, Maastricht, the
184 Netherlands
- 185 ⁹²Department of Radiology&Nuclear medicine, ErasmusMC, the Netherlands
- 186 ⁹³Unit for Hereditary Dementias, Theme Aging, Karolinska University Hospital-Solna, 171 64 Stockholm Sweden
- 187 ⁹⁴Aging Research Center, Department of Neurobiology, Care Sciences and Society, Karolinska Institutet and
188 Stockholm University, Stockholm, Sweden
- 189 ⁹⁵Dept.of Public Health and Carins Sciences / Geriatrics, Uppsala University, Sweden
- 190 ⁹⁶Université Paris-Saclay, CEA, Centre National de Recherche en Génomique Humaine (CNRGH), 91057, Evry,
191 France
- 192 ⁹⁷Department of Surgery, Federal University of Minas Gerais (UFMG) Belo Horizonte, Minas Geraes, Brazil
- 193 ⁹⁸Department of Psychiatry, Federal University of Minas Gerais (UFMG) Belo Horizonte, Minas Geraes, Brazil
- 194 ⁹⁹Psychiatry Service of the University Hospital, Federal University of Minas Gerais, Belo Horizonte, Minas Geraes,
195 Brazil
- 196 ¹⁰⁰The John P. Hussman Institute for Human Genomics, University of Miami, Miami, Florida, USA
- 197 ¹⁰¹Department of Medical and Molecular Genetics, Indiana University, Indianapolis, Indiana, USA
- 198 ¹⁰²Department of Psychiatry, Washington University School of Medicine, St. Louis, MO 63110, USA
- 199 ¹⁰³NeuroGenomics and Informatics Center, Washington University School of Medicine, St. Louis, MO 63110, USA
- 200 ¹⁰⁴Department of Epidemiology and Biostatistics, Case Western Reserve University, Cleveland, Ohio, USA
- 201 ¹⁰⁵Department of Biostatistics, Boston University, Boston, Massachusetts, USA
- 202 ¹⁰⁶Department of Epidemiology, Boston University, Boston, Massachusetts, USA
- 203 ¹⁰⁷Department of Medicine (Biomedical Genetics), Boston University, Boston, Massachusetts, USA
- 204 ¹⁰⁸Department of Neurology, Boston University, Boston, Massachusetts, USA
- 205 ¹⁰⁹Department of Ophthalmology, Boston University, Boston, Massachusetts, USA
- 206 ¹¹⁰Department of Biostatistics, Boston University School of Public Health, Boston, MA, USA
- 207 ¹¹¹Department of Genome Sciences, University of Washington, Seattle, Washington, USA
- 208 ¹¹²Department of Medicine (Medical Genetics), University of Washington, Seattle, Washington, USA
- 209 ¹¹³Department of Biostatistics, University of Washington, Seattle, Washington, USA
- 210 ¹¹⁴Taub Institute on Alzheimer's Disease and the Aging Brain, Department of Neurology, Columbia University,
211 New York, New York, USA
- 212 ¹¹⁵Gertrude H. Sergievsky Center, Columbia University, New York, New York, USA
- 213 ¹¹⁶Dr. John T. Macdonald Foundation Department of Human Genetics, University of Miami, Miami, Florida, USA
- 214 ¹¹⁷Department of Neuroscience, Mount Sinai School of Medicine, New York, New York, USA
- 215 ¹¹⁸Penn Neurodegeneration Genomics Center, Department of Pathology and Laboratory Medicine, University of
216 Pennsylvania Perelman School of Medicine, Philadelphia, Pennsylvania, USA
- 217 ¹¹⁹Department of Neurology, Columbia University, New York, New York, USA
- 218 ¹²⁰Unifomed Services University of the Health Sciences; The American Genome Center, Bethesda, USA
- 219 ¹²¹Univ Rouen Normandie, Normandie Univ, Inserm U1245 and CHU Rouen, Department of Genetics and CNR-
220 MAJ, F 76000 Rouen, France
- 221 ¹²²Inserm, Bordeaux Population Health Research Center, UMR 1219, Univ. Bordeaux, ISPED, CIC 1401-EC, Univ
222 Bordeaux,Bordeaux, France
- 223 ¹²³CHU de Bordeaux, Pole santé publique, Bordeaux, France
- 224 ¹²⁴Univ Lille Inserm 1171, CHU Clinical and Research Memory Research Centre (CMRR) of Distalz Lille France.
- 225 ¹²⁵Université de Paris, EA 4468, APHP, Hôpital Broca, Paris, France
- 226 ¹²⁶University Bordeaux, Inserm, Bordeaux Population Health Research Center, France

- 227 ¹²⁷Department of Neurology, Bordeaux University Hospital, Bordeaux, France
- 228 ¹²⁸Department of Child and Adolescent Psychiatry and Psychotherapy, University Hospital of Psychiatry Zurich,
229 University of Zurich, Zurich, Switzerland
- 230 ¹²⁹Neuroscience Center Zurich, University of Zurich and ETH Zurich, Switzerland
- 231 ¹³⁰Zurich Center for Integrative Human Physiology, University of Zurich, Switzerland
- 232 ¹³¹Old Age Psychiatry, Department of Psychiatry, Lausanne University Hospital, Lausanne, Switzerland
- 233 ¹³²Department of Geriatric Psychiatry, University Hospital of Psychiatry Zürich, Zürich, Switzerland
- 234 ¹³³Institute for Regenerative Medicine, University of Zürich, Switzerland
- 235 ¹³⁴Public Health Nutrition Unit, Institute of Nutrition and Food Technology, University of Chile, Chile
- 236 ¹³⁵Interuniversity Center for Healthy Aging RED21993, Chile
- 237 ¹³⁶Biomedica Research Group, Centro de Estudios Clínicos, Santiago, Chile
- 238 ¹³⁷Departamento de Psiquiatría y Salud Mental, Campus Oriente, Facultad de Medicina, Universidad de Chile,
239 Santiago, Chile
- 240 ¹³⁸Instituto Nacional de Geriátría, Santiago, Chile
- 241 ¹³⁹Geroscience Center for Brain Health and Metabolism, Santiago, Chile
- 242 ¹⁴⁰Latin American Institute for Brain Health (BrainLat), Universidad Adolfo Ibanez, Chile
- 243 ¹⁴¹Memory and Neuropsychiatric Center (CMYN) Neurology Department, Hospital del Salvador y Facultad de
244 Medicina, Universidad de Chile. Santiago, Chile
- 245 ¹⁴²Interuniversity Center for Healthy Aging RED21993, Santiago, Chile
- 246 ¹⁴³Geriatrics Section Clinical Hospital University of Chile, Chile
- 247 ¹⁴⁴Neurology Service Hospital del Salvador, Santiago, Chile
- 248 ¹⁴⁵Centre for Precision Health, Edith Cowan University, Joondalup, Perth, Australia
- 249 ¹⁴⁶Collaborative Genomics and Translation Group, School of Medical and Health Sciences, Edith Cowan
250 University, Joondalup, Perth, Australia
- 251 ¹⁴⁷Curtin Health Innovation Research Institute, Curtin University, Bentley, Perth, Australia
- 252 ¹⁴⁸Centre for Healthy Brain Ageing, School of Psychiatry, Faculty of Medicine, University of New South Wales,
253 Sydney, Australia
- 254 ¹⁴⁹Center of Excellence for Stress and Mental Health (CESAMH), VA San Diego Healthcare System, San Diego,
255 CA, USA
- 256 ¹⁵⁰Center for Behavior Genetics of Aging, University of California San Diego, La Jolla, CA, USA
- 257 ¹⁵¹VA San Diego Healthcare System, San Diego, CA, USA; Department of Psychiatry
- 258 ¹⁵²Department of Psychiatry, University of California San Diego, La Jolla, CA, USA
- 259 ¹⁵³Center of Excellence for Stress and Mental Health, VA San Diego Healthcare System, San Diego, CA, USA
- 260 ¹⁵⁴Center for Behavior Genetics of Aging, University of California, San Diego, La Jolla, CA, USA
- 261 ¹⁵⁵Massachusetts Veterans Epidemiology Research and Information Center (MAVERIC), VA Boston Healthcare
262 System, Boston, MA, USA
- 263 ¹⁵⁶Division of Aging, Brigham & Women's Hospital, Harvard Medical School, Boston, Massachusetts, USA
- 264 ¹⁵⁷Molecular Markers Laboratory, IRCCS Istituto Centro San Giovanni di Dio Fatebenefratelli, Brescia, Italy
- 265 ¹⁵⁸Neurodegenerative Diseases Unit, Fondazione IRCCS Ca' Granda, Ospedale Policlinico, Milan, Italy
- 266 ¹⁵⁹Dept. of Biomedical, Surgical and Dental Sciences, University of Milan, Milan, Italy
- 267 ¹⁶⁰Department of Clinical Sciences and Community Health, University of Milan, 20122 Milan, Italy
- 268 ¹⁶¹Institute of Gerontology and Geriatrics, Department of Medicine and Surgery, University of Perugia, Italy
- 269 ¹⁶²Division of Clinical Geriatrics, Department of Neurobiology, Care Sciences and Society, Karolinska Institutet,
270 Stockholm, Sweden
- 271 ¹⁶³Interdisciplinary Department of Medicine, Geriatric Medicine and Memory Unit, University of Bari "A. Moro, Bari,
272 Italy
- 273 ¹⁶⁴Centre for Memory Disturbances, Lab of Clinical Neurochemistry, Section of Neurology, University of Perugia,
274 Italy
- 275 ¹⁶⁵Department of Biomedical Sciences, University of Cagliari, Italy.
- 276 ¹⁶⁶Neurology, IRCCS San Gerardo dei Tintori, Monza and University of Milano-Bicocca, Italy
- 277 ¹⁶⁷Department of Clinical and Experimental Sciences, University of Brescia Italy
- 278 ¹⁶⁸Department of Continuity of Care and Frailty, ASST Spedali Civili Brescia, Brescia, Italy
- 279 ¹⁶⁹Department of Neuroscience, Psychology, Drug Research and Child Health University of Florence, Italy
- 280 ¹⁷⁰IRCCS Fondazione Don Carlo Gnocchi, Florence, Italy
- 281 ¹⁷¹Past Director Dementia Unit University of Parma , Parma, Italy
- 282 ¹⁷²Department of Hematology and Stem Cell Transplant, Vito Fazzi Hospital, Lecce, Italy
- 283 ¹⁷³Department of Neuroscience "Rita Levi Montalcini", University of Torino, Torino, Italy
- 284 ¹⁷⁴Department of Neuroscience, Università Cattolica del Sacro Cuore, Rome, Italy.

285 ¹⁷⁵Neurology Unit, IRCCS Fondazione Policlinico Universitario A. Gemelli, Rome, Italy.
286 ¹⁷⁶Laboratory of Neuropsychiatry, IRCCS Santa Lucia Foundation, Rome, Italy
287 ¹⁷⁷Niigata University, Brain Research Institute, Japan
288 ¹⁷⁸Research Center, National Center for Geriatrics and Gerontology, Japan
289 ¹⁷⁹UK Dementia Research Institute, Cardiff University, UK
290 ¹⁸⁰Institute of Neurology, Catholic University of the Sacred Heart, Rome, Italy
291 ¹⁸¹Department of Neurology, Amitié Hospital, Bangui, Central African Republic
292 ¹⁸²Department of Neurology, Brazzaville University Hospital, Brazzaville, Republic of Congo
293 ¹⁸³Department of Radiology, Indiana University, Indianapolis, Indiana, USA
294 ¹⁸⁴Department of Psychiatry and Psychotherapy, Faculty of Medicine and University Hospital Cologne, University
295 of Cologne, Cologne, Germany
296 ¹⁸⁵Cluster of Excellence Cellular Stress Responses in Aging-associated Diseases (CECAD), University of
297 Cologne, Cologne, Germany
298 ¹⁸⁶Translational Health Sciences, Bristol Medical School, University of Bristol, Bristol, UK
299 ¹⁸⁷Department of Epidemiology, ErasmusMC, Rotterdam, The Netherlands
300 ¹⁸⁸Nuffield Department of Population Health Oxford University, Oxford, UK
301 ¹⁸⁹High Institute of Biotechnology, University of Monastir, Monastir, Tunisia.
302 ¹⁹⁰Laboratory of Genetics, Immunology and Human Pathology, Faculty of Science of Tunis, University of Tunis El
303 Manar, 2092 Tunis, Tunisia.
304 ¹⁹¹Alzheimer's Centre Reina Sofia-CIEN Foundation-ISCIII, 28031 Madrid, Spain.
305 ¹⁹²Dept. of Public Health and Caring Sciences / Geriatrics, Uppsala University, Uppsala, Sweden
306 ¹⁹³Krembil Brain Institute, University Health Network, Toronto, Ontario, Canada
307 ¹⁹⁴Tanz Centre for Research in Neurodegenerative Diseases, Departments of Medicine and Laboratory Medicine
308 & Pathobiology, University of Toronto, Toronto, Ontario, Canada
309 ¹⁹⁵Bordeaux, INSERM, Bordeaux Population Health Research Center, UMR 1219, Bordeaux, France
310 ¹⁹⁶Fondazione IRCCS Istituto Neurologico Carlo Besta, Milan, Italy
311 ¹⁹⁷NORMENT Centre, Division of Mental Health and Addiction, Oslo University Hospital, Oslo, Norway
312 ¹⁹⁸Institute of Clinical Medicine, University of Oslo, Oslo, Norway
313 ¹⁹⁹Centre for Neuropsychiatric Genetics and Genomics, School of Medicine, Cardiff University, UK
314 ²⁰⁰Research Center and Memory clinic Fundació ACE, Institut Català de Neurociències Aplicades, Universitat
315 Internacional de Catalunya, Barcelona, Spain
316 ²⁰¹Department of Neurodegenerative diseases and Geriatric Psychiatry, University Hospital Bonn, Medical
317 Faculty, Bonn, Germany
318 ²⁰²Department of Psychiatry & Glenn Biggs Institute for Alzheimer's and Neurodegenerative Diseases, San
319 Antonio, TX, USA
320 ²⁰³National Center for PTSD, Behavioral Sciences Division, VA Boston Healthcare System, Boston MA
321 ²⁰⁴Department of Psychiatry, Boston University Chobanian & Avedisian School of Medicine, Boston MA
322 ²⁰⁵Biomedical genetics/Department of Medicine, Boston University Chobanian & Avedisian School of Medicine,
323 Boston MA.
324 ²⁰⁶Department of Biostatistics, Boston University School of Public Health, Boston, MA.

325 **We built a genetic risk score (GRS) from the most complete landscape of the**
326 **Alzheimer disease (AD) genetics. We extended its analysis in 16 European countries**
327 **and observed a consistent association of this GRS with AD risk, age at onset and**
328 **cerebrospinal fluid (CSF) AD biomarker levels regardless of the *Apolipoprotein E***
329 **(*APOE*) genotype. This GRS was also associated with AD risk (independently of**
330 ***APOE*) with a decreasing order of magnitude in those with an European-American,**
331 **North-African, East-Asian, Latin-American, African-American background respectively.**
332 **No association of the GRS to AD was seen in sub-Saharan African and Indian**
333 **populations. This GRS captures information specific to AD as its association**
334 **decreases as the diagnosis broadens. In conclusion, a simple GRS captures shared**
335 **genetic information specific to AD between multi-ancestry populations. However,**
336 **more population diversity is needed to better understand the AD genetic complexity**
337 **across populations.**
338

339 Over the past 15 years, genome-wide association studies (GWAS) have successfully
340 identifying the genetic component of multifactorial diseases. This has led to the development
341 of several powerful approaches that help decipher pathophysiological processes and
342 propose potential diagnostic/prognostic tools. These tools include GRS, a cumulative effect
343 score summarizing the information distributed across individual susceptibility genome-wide
344 significant variants or polygenic risk scores (PRS, an extension of GRS to loci of small effect,
345 without genome-wide significant associations to potentially capture additional predictive
346 capacity¹.

347 Due to high estimate of the genetic component of AD, i.e., heritability of 60-80% in twin
348 studies², such GRSs/PRSs have logically been of particular interest in this pathology. Many
349 GRS/PRS have therefore been developed to assess their associations with AD and related
350 disease (ADRD) risk or with ADRD-related endophenotypes such as age at onset³, brain
351 imaging⁴⁻⁶ or CSF biomarkers^{7,8}. In almost of these studies, the GRSs/PRSs were
352 significantly associated with the quantitative or binary traits of interest. However,
353 comparisons between publications, even for the same trait such as AD risk, appear to be
354 difficult due to obvious differences in the populations analyzed, heterogeneity in summary
355 statistics and in the variants included, or different statistical methods used to calculate the
356 PRSs⁹. In addition, most of the GRSs/PRSs approaches have been developed utilizing
357 European ancestry populations, and only a few studies have investigated the relevance of
358 such tools in different ancestries^{10,11}.

359 Recently, a GRS built from the most complete and reliable landscape of AD genetics,
360 including 75 AD risk loci (and 83 independent signals excluding *APOE*) generated by the
361 European Alzheimer & Dementia Biobank (EADB) consortium, was tested in a limited
362 number of European ancestry cohorts¹². This GRS was found to be associated with the risk
363 of developing future AD/dementia in population-based studies, or of progressing from mild
364 cognitive impairment to AD/dementia. In this context, we decided to validate the association
365 of this GRS with AD risk, CSF biomarker levels and age at onset in populations from 16
366 European countries. We also decided to extend the study of this GRS to include different
367 ancestries from Asia, Africa and Latin America.

368 The different populations analyzed in this work are described in Supplementary Table 1. Two
369 main GRSs were calculated (see Supplementary Table 1 for the different adjustments used
370 per population and Supplementary Table 2 for the list of SNPs used); (i) a GRS including the
371 genome-wide significant and independent sentinel SNPs at the loci reported by Bellenguez
372 et al. (referred to as GRS^{ALZ}) and (ii) a GRS including these sentinel SNPs and adjusted for
373 the number of *APOE*- ϵ 2 and *APOE*- ϵ 4 alleles (GRS^{ALZadjAPOE}).

374 We first analyzed the association of these GRSs with the risk of developing AD in case-
375 control studies from 16 countries representative of the European genetic diversity of the
376 EADB. All the GRS distributions in cases and controls are shown in Supplementary Figures
377 1-3. All countries were analyzed independently and the Odd Ratios (ORs) indicate the effect
378 of the GRS as the increase in the risk of AD associated with each additional allele of average
379 risk in the GRS. GRS^{ALZ} appeared to be significantly associated with AD in a homogeneous

380 manner across Europe. The association of GRS^{ALZ} with AD risk was little affected when the
381 impact of $\epsilon 2/\epsilon 3/\epsilon 4$ *APOE* alleles ($GRS^{ALZadjAPOE}$) was considered (Fig. 1). Of note,
382 $GRS^{ALZadjAPOE}$ was also associated with a younger age at onset (Supplementary Fig. 4).
383 We then generated a mega-analysis based on the EADB datasets of the 16 European
384 countries in order to assess in the most precise way, the risk of developing AD according to
385 GRS strata, i.e. 0-2%, 2-5%, 10-20%, 20-40%, 60-80%, 80-90%, 90-95%, 95-98% and finally
386 98-100%. The 40-60% GRS stratum was used as the reference. In this analysis, we also
387 generated a GRS including the sentinel SNPs of the GWAS loci but also the two SNPs
388 defining the $\epsilon 2/\epsilon 3/\epsilon 4$ *APOE* alleles ($GRS^{ALZinclAPOE}$). Results are shown in Fig 2A and as
389 expected the risk of developing AD in the most extreme strata is particularly high when
390 *APOE* is included in the GRS. However, association of GRS^{ALZ} was also significant in all the
391 strata analyzed and not impacted when adjusted for the number of *APOE*- $\epsilon 2$ and *APOE*- $\epsilon 4$
392 alleles ($GRS^{ALZadjAPOE}$). In the two extreme 0-2% and 98-100% strata, both GRS^{ALZ} and
393 $GRS^{ALZadjAPOE}$ were associated with a decrease of more than 2-fold or an increase of more
394 than 3-fold of the AD risk when compared with the 40-60% stratum (see Fig. 2A and
395 Supplementary Table 3).
396 Since all the analyses suggested an association of GRS^{ALZ} independently of the *APOE*
397 status, we took advantage of our large mega-analysis to fully address how GRS^{ALZ} interacts
398 with the *APOE* genotypes. For this purpose, we stratified in 4 groups the mega-analysis
399 according to the *APOE* genotype by grouping together the $\epsilon 2\epsilon 2/\epsilon 2\epsilon 3$, $\epsilon 3\epsilon 3$, $\epsilon 2\epsilon 4/\epsilon 3\epsilon 4$, $\epsilon 4\epsilon 4$
400 carriers. We then assessed in each of these subpopulations, the association of GRS^{ALZ} with
401 AD risk per quintile strata (0-20%, 20-40%, 60-80% and 80-100%) with the 40-60% stratum
402 as a reference. Remarkably, GRS^{ALZ} appeared to be homogeneously associated with AD risk
403 in all the strata indicating that the *APOE* and GRS^{ALZ} risk are independent (Fig. 2B and
404 Supplementary Table 4).
405 To determine whether these GRSs are associated with pathophysiological processes known
406 to be involved in the AD pathology, we used a large GWAS on CSF A β 42, Tau and p-Tau
407 that we generated through EADB, including 5,944 individuals¹³. GRS^{ALZ} was associated with
408 a decrease in A β 42 levels and with an increase in Tau and pTau levels that fits with the
409 increased AD risk associated with this GRS (Fig. 3). $GRS^{ALZadjAPOE}$ was similarly significantly
410 associated with these endophenotype levels (Fig. 3). It should be noted that although the
411 association of these GRSs with the level of A β 42 in CSF appears to be highly heterogeneous
412 between populations, their associations with the levels of Tau and p-Tau are, on the contrary,
413 highly homogeneous in the same populations. This could be interpreted as Tau and p-Tau
414 concentrations directly reflecting pathophysiological processes (probably neuronal) that
415 depend on the genetic factors of Alzheimer's disease. CSF A β 42 concentrations, on the
416 other hand, would depend on multiple intermediate processes, leading to the heterogeneity
417 observed between the different populations.
418 Following the assessment of these GRS associations with AD risk and endophenotypes in
419 European populations, we thought to extend their analyses to other European-ancestry
420 populations (USA) but to include also populations from India, East-Asia (China, Japan and
421 Korea), North-Africa (Tunisia), sub-Saharan Africa (Central African Republic/the Congo
422 Republic), South-America (Argentina, Brazil, Chile, and Colombia) as well as African-,
423 Native- and Latino-American admixture populations from US studies (more than 75%
424 African- or Native-American ancestry or self-reporting for Latino-American populations) (Fig.
425 4). With the exception of Korea, where 71 SNPs were available, most GRSs were
426 constructed from 79-85 SNPs including *APOE* variants, supplementary Table 2). All the GRS
427 distributions in cases and controls are shown in Supplementary Figure 5-7. Of note, the
428 association of *APOE* with AD risk was heterogenous between these different populations as
429 previously described in several prior studies (Figure 4 and Supplementary Table 5)^{14,15}.
430 As expected, the AD risk associated with GRS^{ALZ} or $GRS^{ALZadjAPOE}$ was highly similar
431 between European and other European-ancestry populations (USA). Both GRSs were
432 significantly associated with AD risk with a decreasing order of magnitude from Maghreb,
433 East-Asian countries, Latino-American to African-American population admixture (Fig. 5 and

434 Supplementary Table 6). However, these GRSs had no association with risk of AD in the
435 sub-Saharan African and Indian populations. This may be related to the small sample size,
436 which resulted in the study lacking statistical power. However, in African-American
437 admixture, the magnitude of association decreased as the African ancestry percentage
438 increases, to finally reach a level similar to that observed in our sub-Saharan African
439 population: association of $GRS^{ALZadjAPOE}$ with AD risk populations with more than 90% African
440 ancestry is $OR=1.02$ (95% CI 1.00-1.05, $P=9 \times 10^{-2}$). This observation supports the
441 expectation that GRSs constructed on genetic data generated from European ancestry
442 populations perform poorly in African ancestry populations. Similarly, in ADSP Native-
443 American admixture, the magnitude of association decreased as the Native-American
444 ancestry percentage increases (from $OR=1.05$ 95% CI 1.03-1.07, $P=4.1 \times 10^{-6}$, $OR=1.04$ 95%
445 CI 1.02-1.06, $P=9.0 \times 10^{-4}$ to $OR=1.03$ 95% CI 1.01-1.06, $P=5.0 \times 10^{-3}$, respectively in the
446 populations with more than 50%, 75% and 90% Native-American ancestry). Notably, a
447 similar finding was seen in Chilean and Argentinian populations where the
448 GRS^{ALZ} association diminishes when the Native American ancestry rises¹⁶. Of note,
449 $GRS^{ALZadjAPOE}$ was also associated with a younger age at onset in most of the populations
450 studied (at least 100 AD cases) at the notable exception of the Chinese and Korean
451 populations Supplementary Fig. 8). Of note, the APOE $\epsilon 2/\epsilon 3/\epsilon 4$ alleles strongly influence
452 age at onset in these two populations (Supplementary Fig. 9).

453 To refine our analysis in multi-ancestry populations, we calculated the association of
454 $GRS^{ALZadjAPOE}$ and $GRS^{ALZinclAPOE}$ with AD risk per quintile strata (0-20%, 20-40%, 60-80% and
455 80-100%) with the 40-60% stratum as a reference in all our populations. Of note, Salsa,
456 Indian, North-Africa and sub-Saharan Africa populations were excluded because of their
457 small sample size. Results were then meta-analyzed in order to increase statistical power.
458 Consistent with the results shown in Figure 5, the $GRS^{ALZadjAPOE}$ association is very similar
459 between the European-ancestry and East-Asian populations, but less marked with the
460 Latino-American populations and the African-American admixture populations (Fig. 6 and
461 supplementary Table 7).

462 Finally, we took advantage of the Million Veteran Project (MVP) to assess how the
463 association of $GRS^{ALZadjAPOE}$ with the risk of AD behaved in multi-ancestry populations
464 according to the diagnosis of dementia, that is, to see how a GRS derived from case/control
465 studies using a specific diagnosis of AD performed when the diagnosis was broadened to
466 dementia. $GRS^{ALZadjAPOE}$ showed a decreasing association with AD risk as the diagnosis
467 became less specific, irrespective of the multi-ancestry populations studied (Table 1).
468

469 By studying a large multi-ancestry diversity, our work highlights the importance of cross-
470 ancestry studies in unravelling the genetic complexities of this devastating disease and
471 contributes significantly to the understanding of AD risk assessment in diverse populations.
472 The vast majority of GWAS data available worldwide have been developed in European-
473 ancestry populations and the study of the genetics of AD is no exception, especially as the
474 diagnosis of the disease is most often based on specialized clinical structures. This makes
475 studying this disease more difficult in low- and middle-income countries. This is beginning to
476 change as new case-control studies are developed worldwide. However, it is difficult to
477 compare the results obtained in European-ancestry GWASs since GWAS studies in these
478 non-European populations are currently of a size that is at best comparable to that of
479 European studies in the early 2010s^{17,18}. These studies are therefore underpowered to detect
480 at a genome-wide significant level most of the loci found in European populations. In
481 addition, the small size of some of these populations means that there is a risk of generating
482 false positives, as in silico replication is difficult given the sparsity of samples from that
483 population.

484 To address some of these limitations, we have chosen to develop a simple approach to
485 better compare AD genetics across many populations worldwide. We used a GRS combining
486 sentinel SNPs associated with the risk of developing AD in populations of European origin,
487 as described previously¹². We tested its association with the risk of developing AD in the
488 largest panel of diverse populations studied to date. We were able to observe a systematic

489 association of this GRS with all the populations under study, with the exception of Indian and
490 African Sub-Saharan populations, probably partly due to lack of statistical power. Our results
491 thus suggest that all multi-ancestry populations are likely to be affected by shared
492 pathophysiological processes driven in part by these genetic risk factors.
493 However, this study also reveals important differences between populations, especially in
494 African-ancestry populations: ORs are lowest for populations from African countries or of
495 African-American admixture, with the ORs in African-American population, when their %
496 African ancestry reaches 90%, being similar to those measured in populations from sub-
497 Saharan African countries. Our work thus suggests that the AD genetic architecture in
498 African-ancestry populations strongly differs from European-ancestry populations. Higher
499 genetic diversity is observed in African-ancestry populations compared to non-African-
500 ancestry populations¹⁹⁻²¹ and this likely implicates different causal variants in already known
501 loci (as previously described for ABCA7²² and/or different genes involved in the AD
502 pathophysiology as previously proposed in^{23,24}).

503 Such Genetic diversity likely explains part of the potential methodological reason for these
504 variations of the GRS^{ALZ} association across populations. First, although we attempted to
505 develop a comparable GRS, some SNPs were not present in all the populations studied or
506 were poorly imputed, with the likely consequence of underestimating the association of
507 GRSs with AD risk in these populations. However, as these points mainly affect low-
508 frequency variants (see Supplementary Table 2), their impacts on GRSs are likely to be
509 limited. It should be noted that, limiting this imputation problem, some of the genetic data
510 were generated from whole genome sequencing (Alzheimer disease sequencing project
511 (ADSP) and China). Second, we used sentinel variants defined by populations of European
512 ancestry. Most of these are unlikely to be the causal variants and therefore, they do not
513 capture properly the association of a locus with the risk of developing AD in other ancestries
514 as the linkage disequilibrium structure of the genome changes across ancestries. This has
515 already been described for a number of other diseases and populations. The implementation
516 of a PRS calculated based on well-powered GWAS data generated in the target population
517 might solve this problem^{25,26}. However, such an approach will require access to raw GWAS
518 data from different populations to generate accurate multi-ancestry PRSs as for instance
519 already generated in kidney diseases²⁷. Finally, it has been estimated that around 10-20% of
520 AD dementia is misdiagnosed, and we have observed that the more inaccurate the clinical
521 diagnosis of AD dementia, the smaller the magnitude of the association in the GRS. This
522 observation suggests that our current GRSs capture information specific to AD, but that the
523 quality of the clinical diagnose may interfere with measuring the association of this GRS with
524 the AD risk in a given population. This last point will have to be better controlled in the future
525 with the introduction of standardized diagnosis between different populations, for example,
526 based on biological markers (although there is also a need for more diversity in this field to
527 define the relevance of biomarkers in multi-ancestry populations).

528 Finally, our study also confirms the strong heterogeneity in the *APOE* $\epsilon 2/\epsilon 3/\epsilon 4$ associations
529 with AD risk in different populations (Figure 4). Differential regulation of *APOE* expression
530 related to different ancestral genomic background around the locus have been proposed to
531 account for the differences in risk between populations of various ancestries²⁸⁻³¹. In addition,
532 it has also been postulated that interaction with other genetic risk factors for AD may be an
533 explanation for this heterogeneity. However, our data also clearly indicate that GRS^{ALZ}
534 appears to be associated with AD risk regardless of *APOE* status whatever the population
535 studied. This observation suggests that we may have two independent genetic entities for
536 sporadic AD which fits remarkably well with the recent hypothesis of three variants of AD
537 (autosomal dominant AD, *APOE* $\epsilon 4$ -associated sporadic AD and *APOE* $\epsilon 4$ -unassociated
538 sporadic AD) that may lead to a possible revision of the current clinical taxonomy of AD³².

539 In conclusion, our various observations are a call for more genetic diversity in the study of
540 Alzheimer's disease. Although a simple GRS based on the largest European-ancestry GWAS
541 can capture relevant genetic information in most studied populations worldwide, there
542 appears to be important genetic heterogeneity between these populations. Characterizing
543 the global genetic architecture of AD in multi-ancestry populations (particularly African-

544 ancestry) may have important implications for understanding the pathophysiology of AD and
545 accelerating the development of strategies to prevent and treat AD.

546

547 **Acknowledgments**

548 We thank the many study participants, researchers, and staff for collecting and contributing
549 to the data and the high-performance computing service at the University of Lille. This work
550 was funded by a grant (European Alzheimer&Dementia DNA BioBank, EADB) from the EU
551 Joint Programme – Neurodegenerative Disease Research (JPND) and the Fondation
552 Recherche Alzheimer. A.N. was supported by Fondation pour la recherche médicale
553 (EQU202003010147). UMR1167 is also funded by the Inserm, Institut Pasteur de Lille, Lille
554 Métropole Communauté Urbaine, and the French government’s LABEX DISTALZ program
555 (development of innovative strategies for a transdisciplinary approach to Alzheimer’s
556 disease). Full consortium acknowledgements and funding are in the Supplementary Note.

557

558 **Author contributions**

559 **Project coordination:** A.N., J-C.L; **data collection coordination:** A.N., Y.LG., J.G., M.D.G.,
560 E.N.D.M., J-F.D., H.A., V.E-P., A.Rui., K.H.L., T.I., A.Ram., M.L., J-C.L; **Data analyses:** A.N,
561 B.G-B., R.S., Y.K., M.K., I.D.R., C.D., X.Z., Y.L.G. C.E.A-B., M.A.C.B., M.Gue., S.v.d.L.,
562 M.Gos., A.C., C.B., F.K; **EADB Sample contribution:** I.d.R., A.C., S.V.D.L., C.B., F.K.,
563 O.P., A.Sch., M.D., D.R., N.Sch., D.J., S.R-H., L.H., L.M.P., E.D., O.G., J.Wilt., S.H-H.,
564 S.Moe., T.T., N.Sca., J.C., F.M., J.P-T., M.J.B., P.P., R.S-V., V.Á. M.B., P.G-G., R.Pue.,
565 P.Mir., L.M.R., G.P-R., J.M.G-A., J.L.R., E.R-R., H.S., T.K., A.d.M., S.Meh., J.Hor., M.V.,
566 K.L.R., J.Q.T., Y.A.P., H.H. J.v.S., I.Ram., F.V., A.v.d.L. P.Sch., C.G., G.P., V.G., G.N.,
567 C.Duf., F.P., O.H., S.D., A.B., J-F.Del., E.G., J.P., D.G., B.Aro., P.Mec., V.S., L.P., A.Squ.,
568 L.T., B.Bor., B.N., P.C., D.S., I.Rai., A.Dan., J.Will., C.Mas., P.A., F.J., P.K., C.V.D., R.F-S.,
569 T.M., P.S-J., K.S., M.I., G.R., M.H., R.Sim., W.v.d.F., O.A., A.Rui., A.Ram., J-C.L., **MVP**
570 **Sample contribution:** R.She., R.H., V.M., M.P., R.Z., M.Gaz., M.L.; **Salsa Sample**
571 **contribution:** M.Gos., C.S.B., B.F., Q.Y. S.S.; **ADSP Sample contribution:** A.Gri., T.F.,
572 C.Cru., J.Hai., L.F., A.Des., E.W., R.M., M.P-V., B.K., A.Goa., G.D.S., B.V., L-S.W., Y.Y.L.,
573 C.Dalg., A.Say., S.S.; **Africa sample contribution:** M.Gue., P-M.P., P.Mbe, B.Ban, J-
574 F.Dar.; **East-Asia sample contribution:** Y.K., M.K., X.Z., H.C., N.Y.I., A.K.Y.F., F.C.F.I.,
575 A.M., N.H., K.O., S.N., J.G., V.E-P., K.H.L., T.I.; **South America sample contribution:**
576 C.Dalm., C.E.A-B., M.A.C.B., N.O., C.Muc., C.Cue., L.Cam., P.Sol., D.G.P., S.K., L.I.B., J.O-
577 R., A.G.C.M.,M.F.M., R.Par., G.A., L.A.d.M., M.A.R.S., B.d.M.V., M.T.G.C., B.Ang., S.G.,
578 M.V.C., R.A., P.O., A.Sla., C.G-B., C.A., P.F., E.N.d.M., L.M., H.A., A.Rui., A.Ram; **Core**
579 **writing group:** A.N, B.G-B., J-C.L.

580

581 **Competing Interests Statement**

582 C.C. has received research support from: GSK and Eisai. The funders of the study had no
583 role in the collection, analysis, or interpretation of data; in the writing of the report; or in the
584 decision to submit the paper for publication. CC is a member of the advisory board of Vivid
585 Genomics and Circular Genomics and owns stocks. L.M.P. received personal fees from
586 Biogen for consulting activities unrelated to the submitted work T.G. received consulting fees
587 from AbbVie, Alector, Anavex, Biogen, Cogthera, Eli Lilly, Functional Neuromodulation,
588 Grifols, Iqvia, Janssen, Noselab, Novo Nordisk, NuiCare, Orphanzyme, Roche Diagnostics,
589 Roche Pharma, UCB, and Vivoryon; lecture fees from Biogen, Eisai, Grifols, Medical
590 Tribune, Novo Nordisk, Roche Pharma, Schwabe, and Synlab; and has received grants to
591 his institution from Biogen, Eisai, and Roche Diagnostics.

592 References

- 593
- 594 1. Osterman, M.D. et al, Polygenic Risk Scores. *Curr. Protoc.* **1**, e126 (2021)
- 595 2. Gatz, M. et al., Role of genes and environments for explaining Alzheimer disease.
- 596 *Arch. Gen. Psychiatry* **63**, 168-74 (2006)
- 597 3. Desikan, R.S. et al, Genetic assessment of age-associated Alzheimer disease risk:
- 598 Development and validation of a polygenic hazard score. *PLoS Med.* **14**, e1002258
- 599 (2017)
- 600 4. Sabuncu, M.R et al, The association between a polygenic Alzheimer score and
- 601 cortical thickness in clinically normal subjects. *Cereb. Cortex* **22**, 2653-61 (2012)
- 602 5. Mormino, E.C. et al, Polygenic risk of Alzheimer disease is associated with early- and
- 603 late-life processes. *Neurology* **87**, 481-8 (2016)
- 604 6. Xicota, L. et al, Association of APOE-Independent Alzheimer Disease Polygenic Risk
- 605 Score With Brain Amyloid Deposition in Asymptomatic Older Adults. *Neurology* **99**,
- 606 e462–75 (2022)
- 607 7. Sleegers, K. et al, A 22-single nucleotide polymorphism Alzheimer's disease risk
- 608 score correlates with family history, onset age, and cerebrospinal fluid A β 42.
- 609 *Alzheimers Dement.* **11**, 1452-1460 (2015)
- 610 8. Hong, S. et al, Genome-wide association study of Alzheimer's disease CSF
- 611 biomarkers in the EMIF-AD Multimodal Biomarker Discovery dataset. *Transl.*
- 612 *Psychiatry.* **10**, 403 (2020)
- 613 9. Clark, K. et al, Polygenic Risk Scores in Alzheimer's Disease Genetics: Methodology,
- 614 Applications, Inclusion, and Diversity. *J. Alzheimers Dis.* **89**, 1-12 (2022)
- 615 10. Sariya, S. et al, Polygenic Risk Score for Alzheimer's Disease in Caribbean
- 616 Hispanics. *Ann. Neurol.* **90** 366-376 (2021)
- 617 11. Jung, S.H. et al, Transferability of Alzheimer Disease Polygenic Risk Score Across
- 618 Populations and Its Association With Alzheimer Disease-Related Phenotypes. *JAMA*
- 619 *Netw. Open.* **5**, e2247162 (2022)
- 620 12. Bellenguez, C. et al, New insights into the genetic etiology of Alzheimer's disease and
- 621 related dementias. *Nat. Genet.* **54**, 412-436 (2022)
- 622 13. Jansen, I.E. et al, Genome-wide meta-analysis for Alzheimer's disease cerebrospinal
- 623 fluid biomarkers. *Acta Neuropathol.* **144**, 821-842 (2022)
- 624 14. Logue, M.W. Et al. Genetics of Alzheimer's Disease in the African American
- 625 Population. *J. Clin. Med.* **12**, 5189 (2023)
- 626 15. Miyashita, A. et al, Genetics of Alzheimer's disease: an East Asian perspective. *J*
- 627 *Hum. Genet.* **68**, 115-124 (2023)
- 628 16. Dalmaso MC, et al, First GWAS on Alzheimer's Disease in Argentina and Chile
- 629 populations. medRxiv, doi.10.1101/2023.01.16.23284609
- 630 17. Hollingworth, P; et al, Common variants at ABCA7, MS4A6A/MS4A4E, EPHA1, CD33
- 631 and CD2AP are associated with Alzheimer's disease. *Nat. Genet.* **43**, 429-435 (2011)
- 632 18. Naj, A.C. et al, Common variants at MS4A4/MS4A6E, CD2AP, CD33 and EPHA1 are
- 633 associated with late-onset Alzheimer's disease. *Nat. Genet* **43**,436-41 (2011)
- 634 19. Campbell, M.C. Et al, African genetic diversity: implications for human demographic
- 635 history, modern human origins, and complex disease mapping. *Annu. Rev. Genomics*
- 636 *Hum. Genet.* **9**, 403-33 (2008)
- 637 20. Taliun, D. et al, Sequencing of 53,831 diverse genomes from the NHLBI TOPMed
- 638 Program. *Nature* **590**, 290-299 (2021)
- 639 21. Byrska-Bishop, M. et al, High-coverage whole-genome sequencing of the expanded
- 640 1000 Genomes Project cohort including 602 trios. *Cell* **185**, 3426-3440 (2022)
- 641 22. Reitz, C. et al, Alzheimer Disease Genetics Consortium. Variants in the ATP-binding
- 642 cassette transporter (ABCA7), apolipoprotein E ϵ 4, and the risk of late-onset
- 643 Alzheimer disease in African Americans. *JAMA* **309**, 1483-92 (2013)
- 644 23. Kunkle, B.W. et al, Novel Alzheimer Disease Risk Loci and Pathways in African
- 645 American Individuals Using the African Genome Resources Panel: A Meta-analysis.
- 646 *JAMA Neurol.* **78**, 102-113 (2021)

- 647 24. Sherva, R. et al, African ancestry GWAS of dementia in a large military cohort
648 identifies significant risk loci. *Mol. Psychiatry* **28**, 1293-1302 (2023)
- 649 25. Choi, SW. et al, Tutorial: a guide to performing polygenic risk score analyses. *Nat.*
650 *Protoc.* **15**, 2759-2772 (2020)
- 651 26. Wand, H. et al, Improving reporting standards for polygenic scores in risk prediction
652 studies. *Nature* **591**, 211-219 (2021)
- 653 27. Khan, A. et al, Genome-wide polygenic score to predict chronic kidney disease
654 across ancestries. *Nat. Med.* **28**, 1412-1420 (2022)
- 655 28. Rajabli, F. et al, Ancestral origin of ApoE ϵ 4 Alzheimer disease risk in Puerto Rican
656 and African American populations. *PLoS Genet.* **14**, e1007791 (2018)
- 657 29. Bussies, P.L., et al, Use of local genetic ancestry to assess TOMM40-523' and risk
658 for Alzheimer disease. *Neurol. Genet.* **6**, e404 (2020)
- 659 30. Nuytemans, K. et al, Identifying differential regulatory control of APOE ϵ 4 on African
660 versus European haplotypes as potential therapeutic targets. *Alzheimers Dement.* **18**,
661 1930-1942 (2022)
- 662 31. Rajabli, F. et al, A locus at 19q13.31 significantly reduces the ApoE ϵ 4 risk for
663 Alzheimer's Disease in African Ancestry. *PLoS Genet.* **18**, e1009977 (2022)
- 664 32. Frisoni, GB. et al, The probabilistic model of Alzheimer disease: the amyloid
665 hypothesis revised. *Nat. Rev. Neurosci.* **23**, 53-66 (2022)
- 666

667 **METHODS Online**

668

669 **GRS computation**

670 GRS^{ALZ} includes the 83 independent signals associated with AD. GRS^{ALZinclAPOE} have two
671 additional SNPs to the list of 83: rs7412, rs429358, encoding APOE ε2 and APOE ε4 and
672 GRS^{APOE} includes only the SNPs rs7412 and rs429358. The formula used to calculate the
673 different GRSs is as follow:

$$\text{GRS}_{\text{sample}} = \sum_{i=1}^{83} (\beta_i * \text{dosage}_{i, \text{sample}}) * \text{Nvariants} / \sum \beta$$

674

675 Where dosage_i is the risk allele dosage or genotype of variant_i. β_i is extracted from stage II
676 meta-analysis summary statistics (including the ADGC, CHARGE and FinnGen data), at the
677 exception of APOE variants, where the β_i are extracted from the summary statistics of the
678 last UK Biobank's GWAS (unpublished data). The last multiplication term is the number of
679 variants divided by the sum of βs. Thanks to this term, one unit of this transformed GRS
680 corresponds to one additional risk allele³³.

681

682 **Sample and variant Quality controls**

683 To have a complete independence of the βs extracted from summary statistics, all samples
684 from ADGC, CHARGE and FinnGen GWASes were filtered out. After meeting the classical
685 GWAS gold standard of sample quality control, each sample was included in the analyses³⁴.
686 If a variant dose, covariate, or discordance between imputed and genotyped (if available)
687 APOE status was observed, the sample was discarded. After QC, a demographic description
688 of each study is shown in Supplementary Table 1.

689 In case of genotyping data, if the variants are genotyped, they should meet the gold standard
690 of GWAS variant QC³⁴. All the studies were also imputed with the TOPmed reference
691 panel^{35,36}, at the exception of the Korean one, which was imputed with the Haplotype
692 Reference Consortium imputation panel³⁷. If the variants were imputed, variants with a Rsq
693 below 0.3 were excluded. In case of WGS data, only variants passing the WGS QC are kept
694 (see supplementary information for ADSP and China sample)(Supplementary Table 2). The
695 global ancestry of each individual in ADSP and MVP was determined with SNPweights
696 v.2.1³⁸ (see supplementary information).

697

698 **European mega-analysis methods**

699 For the mega-analysis of European countries, we merged samples from 5 datasets : EADB-
700 core, GERAD, EADI, Demgene and Bonn. To adjust for population structure, we computed
701 principal components using the following procedure. From the 146,705 variants used in the
702 principal component analysis of EADB-core³⁹, we extracted from this list, TOPMed imputed
703 variants having an imputation quality ≥0.9 in each dataset, resulting in 91,353 variants. Then,
704 we put any genotype to missing if none of the genotype probabilities was higher than 0.8.
705 Finally, we merged all datasets and removed variants having a proportion of missing
706 genotypes higher than 0.02 leading to 90,471 variants used for the principal component
707 analysis. This analysis was performed by flashPCA2. Analyses were adjusted for the 14 firsts
708 principal components, the genotyping chip and center.

709

710 **Statistical analyses**

711 The association of AD status with the GRSs was tested with different models, named
712 according to the GRS and covariates included in the logistic regression (see supplementary
713 Table 1 for covariates).

714 - Model GRS^{ALZ}: AD ~ GRS^{ALZ} + COV

- 715 - Model $GRS^{ALZadjAPOE}$: $AD \sim GRS^{ALZ} + COV + \text{number of } APOE \epsilon 2 \text{ alleles} + \text{number of}$
716 $APOE \epsilon 4 \text{ alleles}$
717 - Model $GRS^{ALZinclAPOE}$: $AD \sim GRS^{ALZinclAPOE} + COV$
718 - Model GRS^{APOE} : $AD \sim GRS^{APOE} + COV$
719

720 **Quantile or Percentile analyses**

721 Depending on the value of their GRS, the samples were divided into the reference group or
722 one of the test groups. In the mega-analysis, the reference group corresponded to the 40-
723 60% percentile and was tested across each percentile (0-2%, 2-5%, 5-10%, 10-20%, 20-
724 40%, 60-80%, 80-90%, 95-98%, 98-100%). In the *APOE* stratified analysis, the reference
725 group was defined by the 40-60% percentile and was tested across quantile (0-20%, 20-
726 40%, 60-80%, 80-100%). In the multi-ancestry analyses, the reference group was defined by
727 the 40-60% percentile and was also tested across quantile (0-20%, 20-40%, 60-80%, 80-
728 100%). These analyses were performed by population and then meta-analyzed per ancestry,
729 using the inverse variance method, implemented in METAL⁴⁰. To note, Indian, North-Africa
730 and sub-Saharan Africa populations were excluded because of their small sample size.

- 731 - Model GRS^{ALZ} : $AD \sim \text{Group}_{0/1}(GRS^{ALZ}) + COV$
732 - Model $GRS^{ALZadjAPOE}$: $AD \sim \text{Group}_{0/1}(GRS^{ALZ}) + COV + \text{number of } APOE \epsilon 2 \text{ alleles} +$
733 $\text{number of } APOE \epsilon 4 \text{ alleles}$
734 - Model $GRS^{ALZinclAPOE}$: $AD \sim \text{Group}_{0/1}(GRS^{ALZinclAPOE}) + COV$
735

736 **References**

- 737 33. Chouraki, V. et al. Evaluation of a genetic risk score to improve risk prediction for Alzheimer's
738 disease. *J. Alzheimers Dis.* **53**, 921–932 (2016).
739 34. Bellenguez, C. et al. New insights into the genetic etiology of Alzheimer's disease and related
740 dementias. *Nat. Genet.* **54**, 412-436 (2022)
741 35. Taliun, D. et al. Sequencing of 53,831 diverse genomes from the NHLBI TOPMed Program.
742 *Nature* **590**, 290–299 (2021).
743 36. Das, S. et al. Next-generation genotype imputation service and methods. *Nat. Genet.* **48**,
744 1284–1287 (2016).
745 37. McCarthy, S. et al. A reference panel of 64,976 haplotypes for genotype imputation. *Nat.*
746 *Genet.* **48**, 1279–1283 (2016).
747 38. Chen, C.Y. et al. Improved ancestry inference using weights from external reference panels.
748 *Bioinformatics* **2**, 1399-406 (2013).
749 39. Abraham, G. et al. FlashPCA2: principal component analysis of Biobank-scale genotype
750 datasets. *Bioinformatics* **33**, 2776-2778 (2017).
751 40. Willer, C. J., Li, Y. & Abecasis, G. R. METAL: fast and efficient meta-analysis of genomewide
752 association scans. *Bioinformatics* **26**, 2190–1 (2010).
753

754 **Data Availability**

755 ADSP: <https://dss.niagads.org/datasets/ng00067/>

756

757 **Code availability**

758 Code are available upon requests

759

760

761

762

763

764

765 **Table 1. Association of GRS^{ALZadjAPOE} with AD, AD and related dementia (ADRD) and**
766 **dementia in MVP.**

Ancestry	Disease	Ncases	Ncontrols	GRS ^{ALZadjAPOE}		
				OR	95% CI	P-value
European American	AD	4,561		1.10	1.09-1.11	1.73x10 ⁻⁸⁸
	ADRD	17,519	84,587	1.06	1.06-1.07	1.94x10 ⁻¹¹¹
	Dementia	26,473		1.05	1.04-1.05	5.82x10 ⁻⁸³
US LA Ancestry	AD	375		1.07	1.04-1.11	1.47x10 ⁻⁵
	ADRD	1,527	7,166	1.02	1.00-1.04	1.27x10 ⁻²
	Dementia	1,981		1.02	1.00-1.03	2.22x10 ⁻²
African American	AD	713		1.05	1.03-1.08	5.38x10 ⁻⁶
	ADRD	4,016	19,405	1.02	1.01-1.02	9.29x10 ⁻⁴
	Dementia	4,702		1.02	1.01-1.03	8.84x10 ⁻⁴

767
768

769 **Figure 1: Association of (A) GRS^{alz} and (B) $GRS^{ALZadjAPOE}$ with the risk of developing AD**
770 **in 15 European countries.** Ncase, number of cases; Ncontrols, number of controls; OR,
771 Odds ratio. The lines in the Forrest plots indicate the 95% confidence interval for the ORs.
772

773 **Figure 2: Relation between the different GRSs and APOE status on the risk of**
774 **developing AD. (A)** Risk of developing AD according to GRS strata (0-2%, 2-5%, 10-20%,
775 20-40%, 60-80%, 80-90%, 90-95%, 95-98%, 98-100%) for GRS^{ALZ} , $GRS^{ALZadjAPOE}$ and
776 $GRZ^{ALZInclAPOE}$. The 40-60% GRS stratum was used as the reference; **(B)** Risk of developing
777 AD according to GRS^{ALZ} strata (0-20%, 20-40%, 60-80% and 80-100%) and to the APOE
778 genotype by grouping together the $\epsilon 2/\epsilon 2/\epsilon 3$, $\epsilon 3/\epsilon 3$, $\epsilon 2/\epsilon 4/\epsilon 3/\epsilon 4$, $\epsilon 4/\epsilon 4$ carriers. The 40-60%
779 GRS stratum was used as the reference.
780

781 **Figure 3: Association of (A) GRS^{alz} and (B) $GRS^{ALZadjAPOE}$ with the level of A β 42, Tau**
782 **and p-TAU in the cerebrospinal fluid in European-ancestry populations.** Ncase, number
783 of cases; Ncontrols, number of controls, OR, Odds ratio. The lines in the Forrest plots
784 indicate the 95% confidence interval for the ORs.
785

786 **Figure 4: World map showing the populations analysed.** A colour gradient indicates the
787 magnitude of the association of APOE $\epsilon 2/\epsilon 3/\epsilon 4$ alleles with the risk of developing AD in
788 different countries (all values are shown in Supplementary Table 5).
789

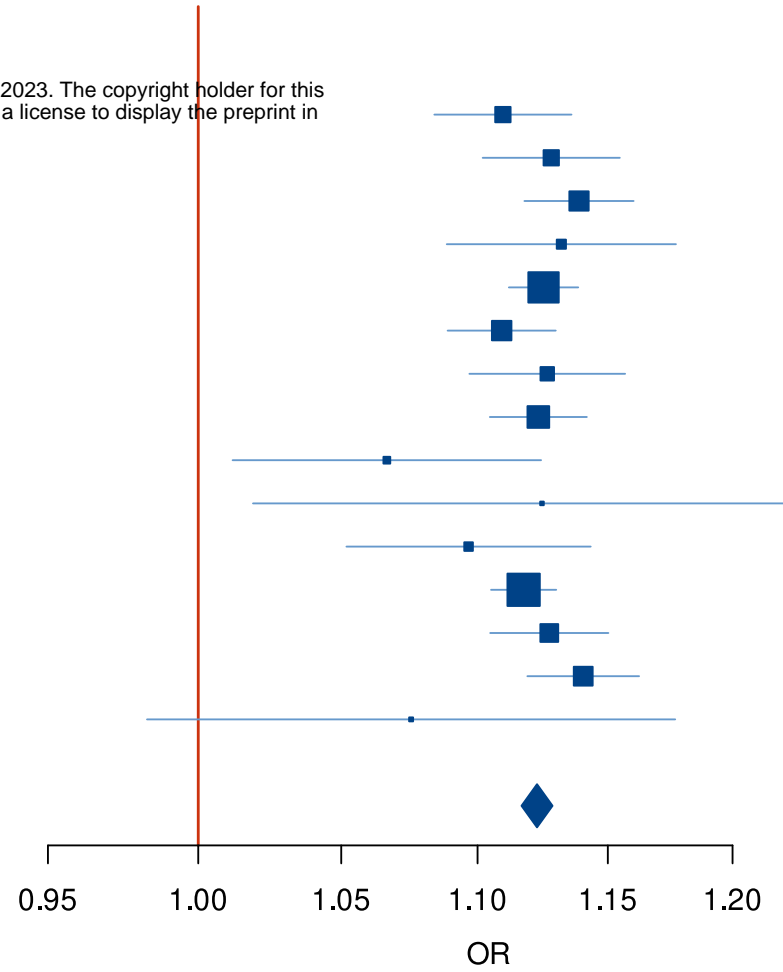
790 **Figure 5: Association of (A) GRS^{alz} and (B) $GRS^{ALZadjAPOE}$ with the risk of developing AD**
791 **in multi-ancestry populations.** Ncase, number of cases; Ncontrols, number of controls; OR,
792 Odds ratio. The lines in the Forrest plots indicate the 95% confidence interval for the ORs.
793 African-American-ancestry (more than 75% AA ancestry) meta-analysis includes MVP and
794 ADSP. East-Asia meta-analysis includes China, Korea and Japan. Latino-American ancestry
795 (self-reporting) meta-analysis includes MMVP, ADSP and Salsa. South-America meta-
796 analysis includes Argentina, Brazil, Chile and Colombia.
797

798 **Figure 6: Risk of developing AD according to GRS (GRS^{ALZ} , $GRS^{ALZadjAPOE}$ and**
799 **$GRZ^{ALZInclAPOE}$) strata (0-20%, 20-40%, 60-80% and 80-100%) in multi-ancestry**
800 **populations.** Ncase, number of cases; Ncontrols, number of controls; OR, Odds ratio. The
801 lines in the Forrest plots indicate the 95% confidence interval for the ORs. The 40-60% GRS
802 stratum was used as the reference in each population and results were meta-analyzed.
803 African-American ancestry meta-analysis includes MVP and ADSP. East-Asia meta-analysis
804 includes China, Korea and Japan. Latina-American ancestry meta-analysis includes MVP
805 and ADSP. South-America meta-analysis includes Argentina, Brazil, Chile and Colombia.

Figure 1
A

GRS^{ALZ}
 $I^2 = 3.9$, $HetP = 4.08e-01$

Country	Ncases	Ncontrols	OR	95% CI	P-value
Finland	1,118	1,770	1.08	[1.08;1.11]	3.14e-19
Norway	1,327	1,179	1.13	[1.10;1.16]	6.07e-24
Sweden	1,466	3,078	1.14	[1.12;1.16]	1.60e-42
Denmark	398	650	1.13	[1.09;1.18]	5.29e-10
United Kingdom	4,622	8,414	1.13	[1.11;1.14]	8.78e-85
The Netherlands	2,428	2,024	1.11	[1.09;1.13]	3.80e-28
Belgium	1,211	1,431	1.13	[1.10;1.16]	1.58e-18
Germany	2,190	3,141	1.12	[1.10;1.14]	5.71e-43
Switzerland	175	372	1.07	[1.01;1.12]	1.66e-02
Czech Republic	177	60	1.12	[1.02;1.25]	1.97e-02
Bulgaria/Greece	735	1,195	1.10	[1.05;1.14]	1.44e-05
France	3,789	9,026	1.12	[1.11;1.13]	3.19e-85
Italy	2,973	1,251	1.13	[1.10;1.15]	2.52e-31
Spain	3,103	1,615	1.14	[1.12;1.16]	1.48e-41
Portugal	80	74	1.08	[0.98;1.18]	1.14e-01
Meta-analysis	25,792	35,280	1.12	[1.12;1.13]	1.07e-412



B

GRS^{ALZadjAPOE}
 $I^2 = 9.2$, $HetP = 3.50e-01$

Country	Ncases	Ncontrols	OR	95% CI	P-value
Finland	1,118	1,770	1.10	[1.08;1.13]	2.32e-14
Norway	1,327	1,179	1.13	[1.10;1.16]	8.43e-20
Sweden	1,466	3,078	1.14	[1.12;1.17]	2.27e-37
Denmark	398	650	1.13	[1.08;1.17]	2.08e-08
United Kingdom	4,622	8,414	1.12	[1.11;1.14]	3.13e-73
The Netherlands	2,428	2,024	1.10	[1.08;1.13]	6.50e-24
Belgium	1,211	1,431	1.13	[1.10;1.16]	2.20e-17
Germany	2,190	3,141	1.12	[1.10;1.14]	9.18e-37
Switzerland	175	372	1.06	[1.01;1.12]	2.32e-02
Czech Republic	177	60	1.14	[1.03;1.27]	1.81e-02
Bulgaria/Greece	735	1,195	1.10	[1.05;1.15]	1.52e-05
France	3,789	9,026	1.11	[1.10;1.13]	4.69e-73
Italy	2,973	1,251	1.12	[1.10;1.15]	2.15e-27
Spain	3,103	1,615	1.14	[1.11;1.16]	2.91e-36
Portugal	80	74	1.07	[0.98;1.18]	1.42e-01
Meta-analysis	25,792	35,280	1.12	[1.11;1.13]	2.20e-353

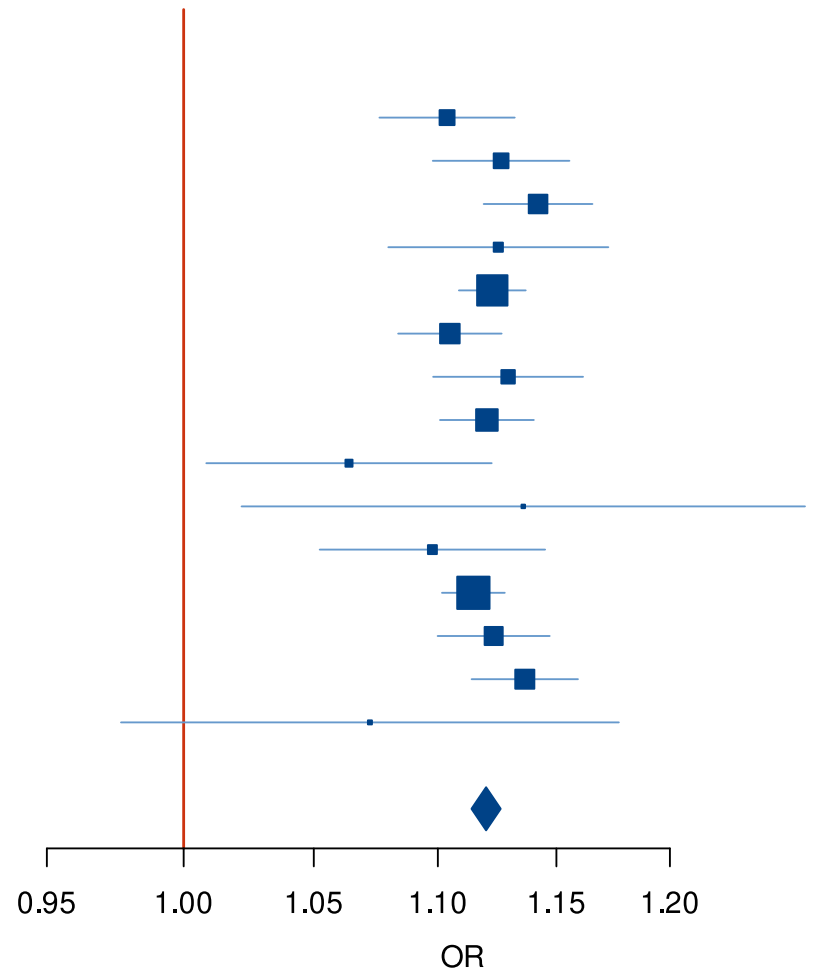
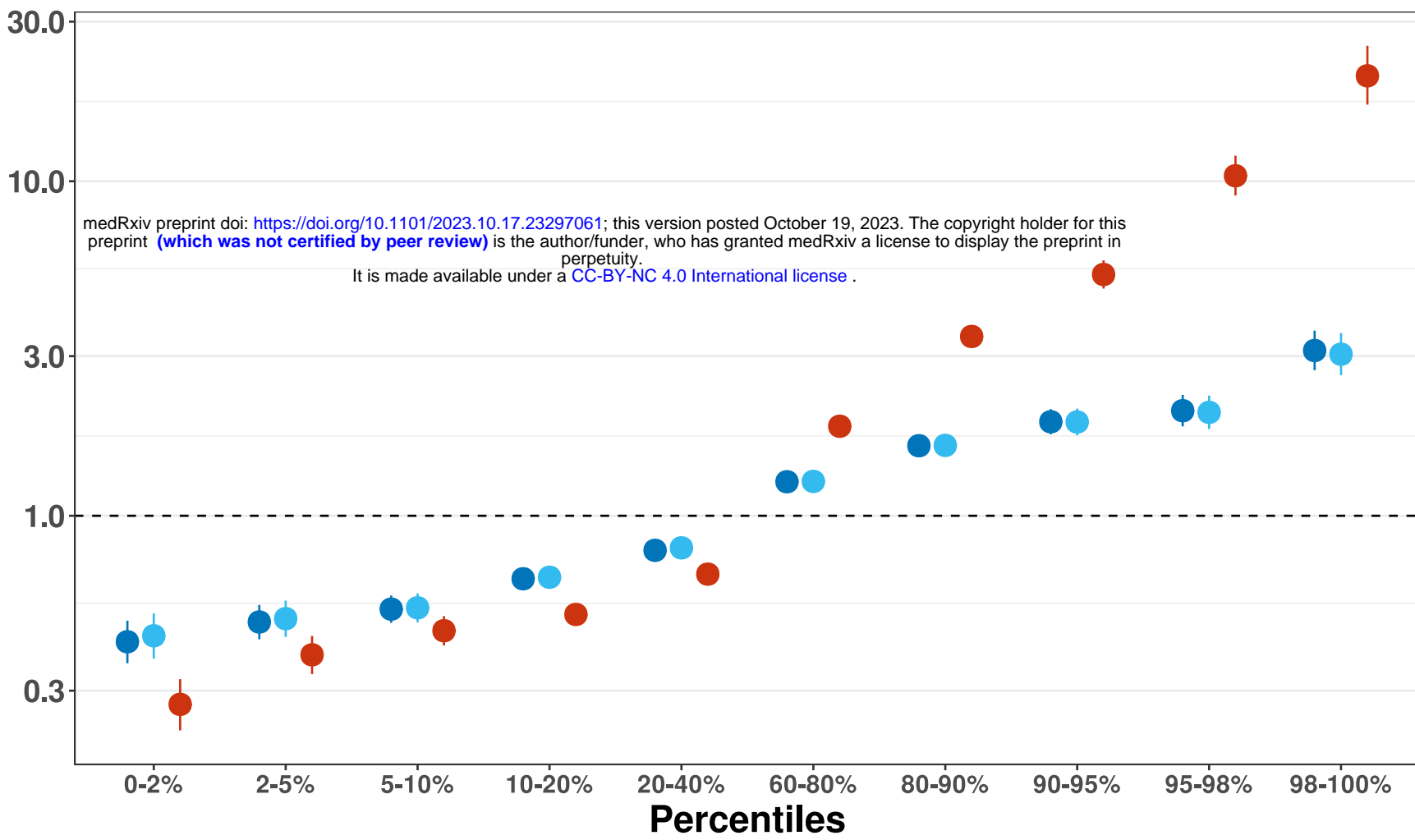
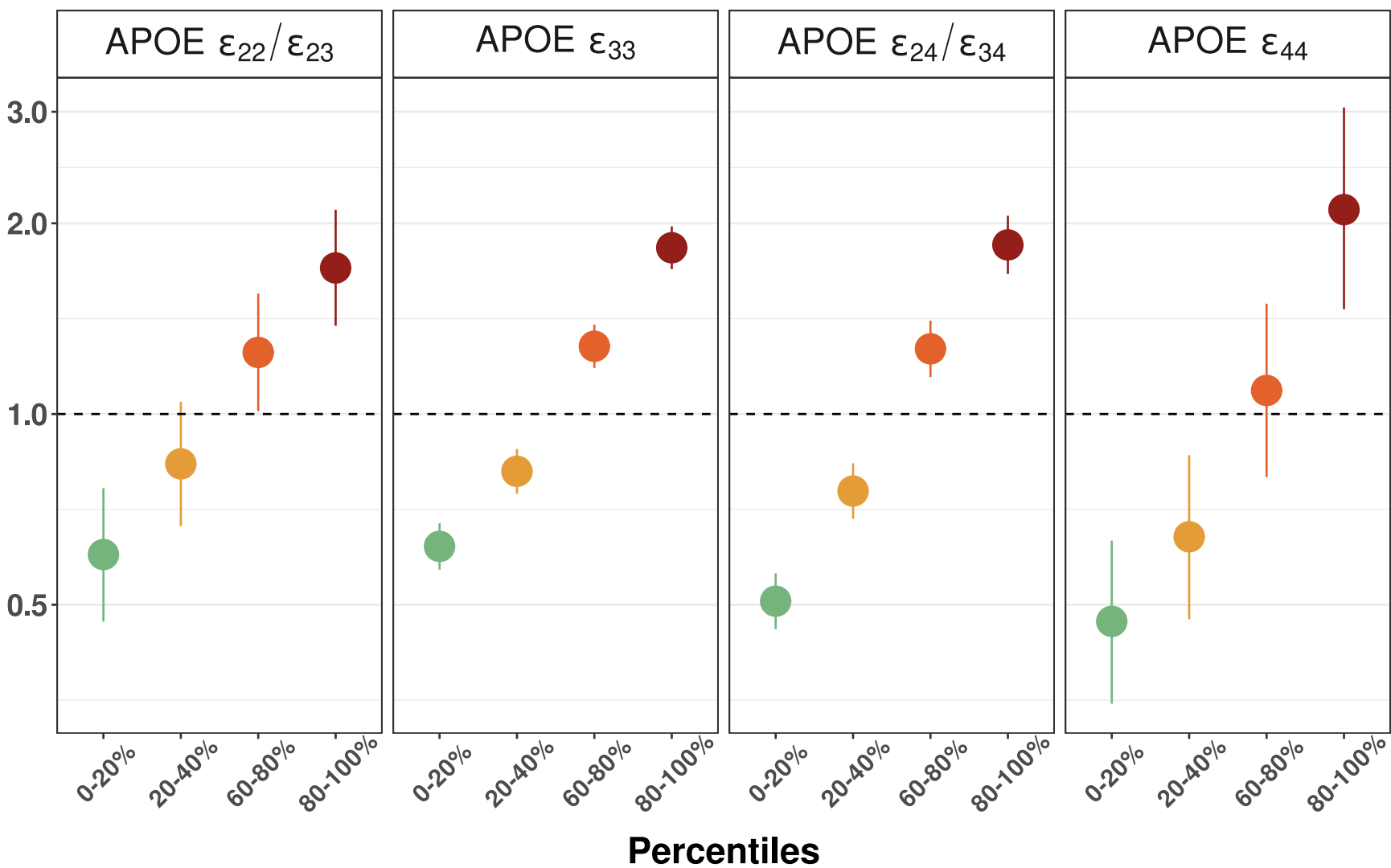


Figure 2

A

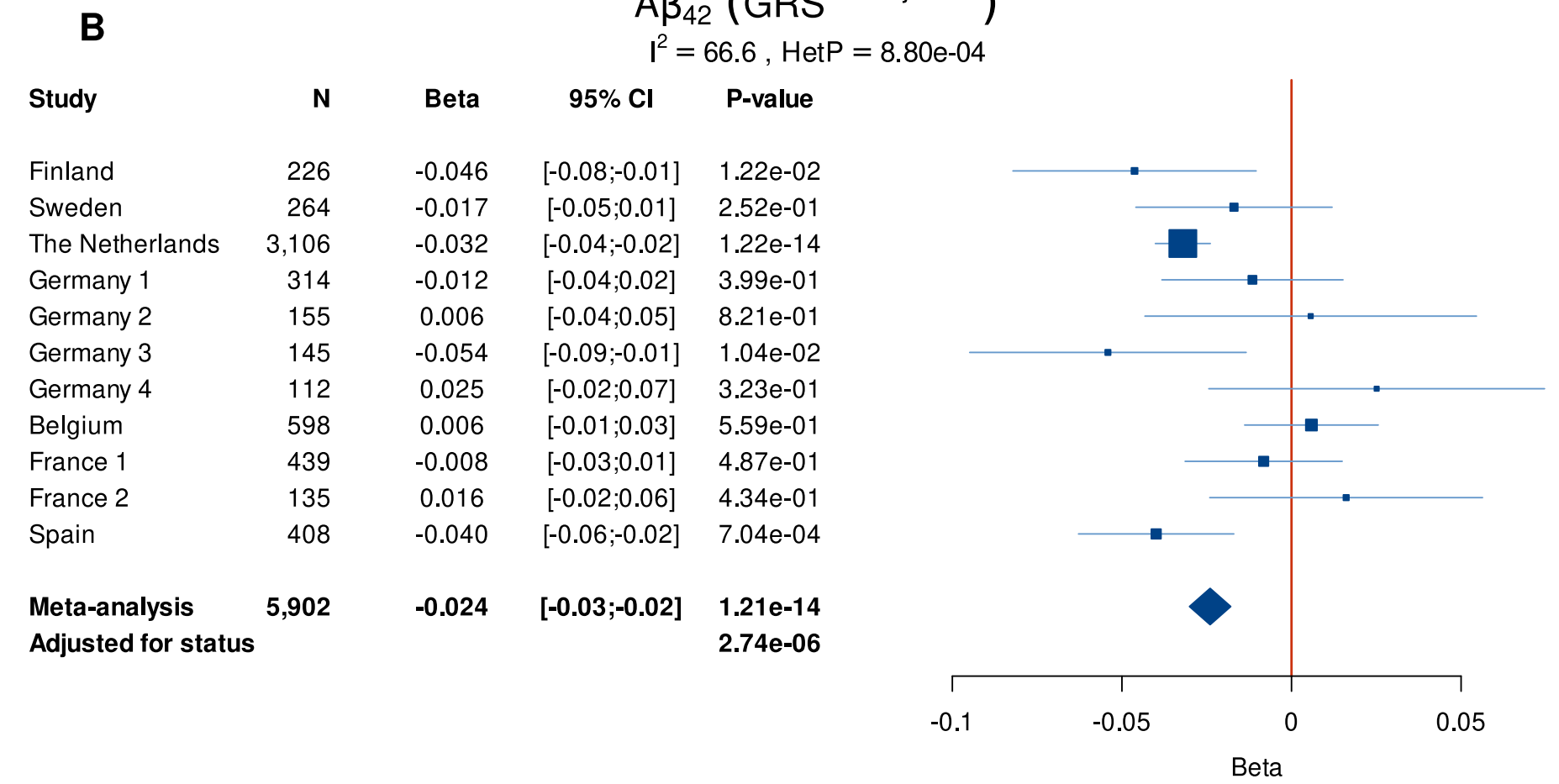
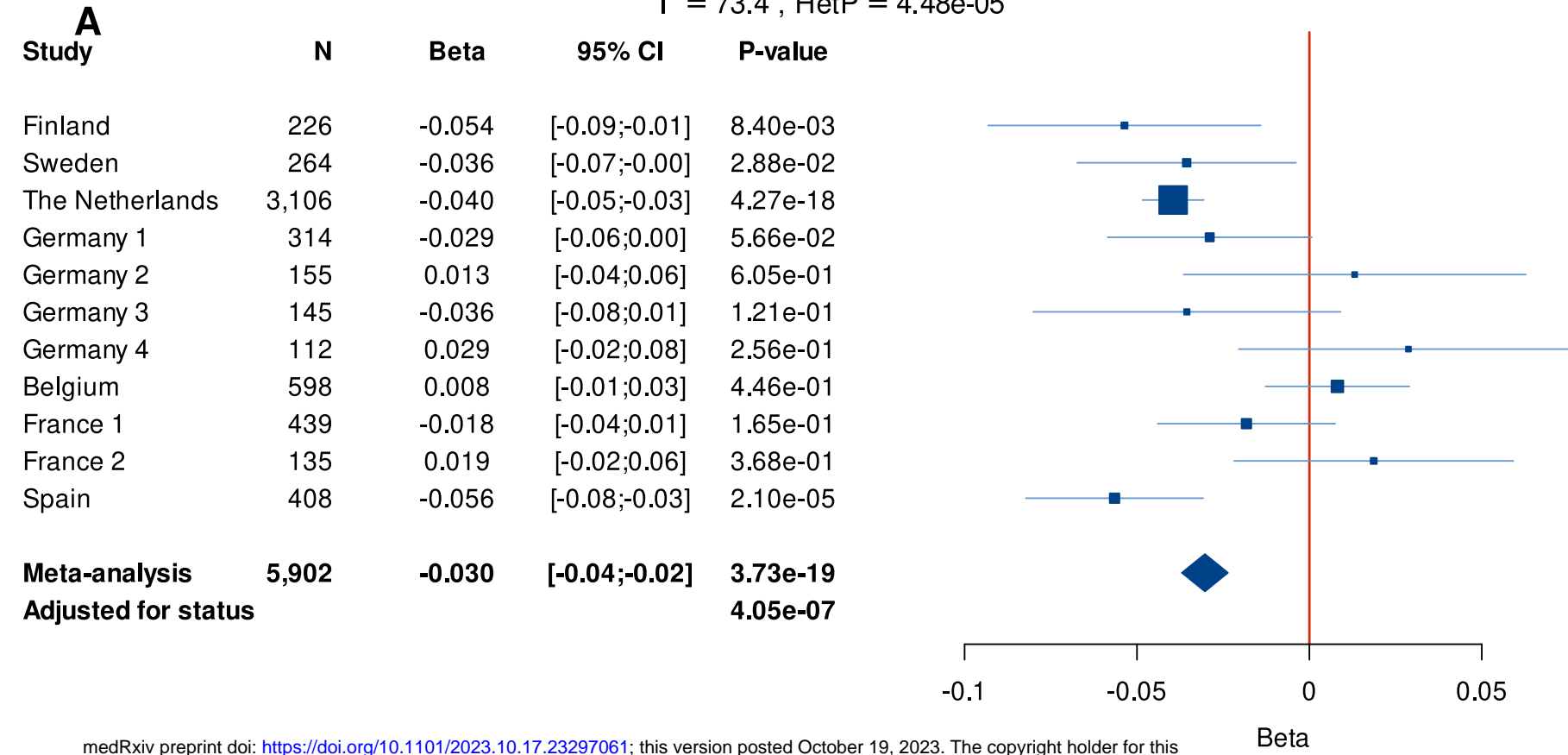


B



Percentiles ● 0-20% ● 20-40% ● 60-80% ● 80-100%

Figure 3



medRxiv preprint doi: <https://doi.org/10.1101/2023.10.17.23297061>; this version posted October 19, 2023. The copyright holder for this preprint (which was not certified by peer review) is the author/funder, who has granted medRxiv a license to display the preprint in perpetuity. It is made available under a [CC-BY-NC 4.0 International license](https://creativecommons.org/licenses/by-nc/4.0/).

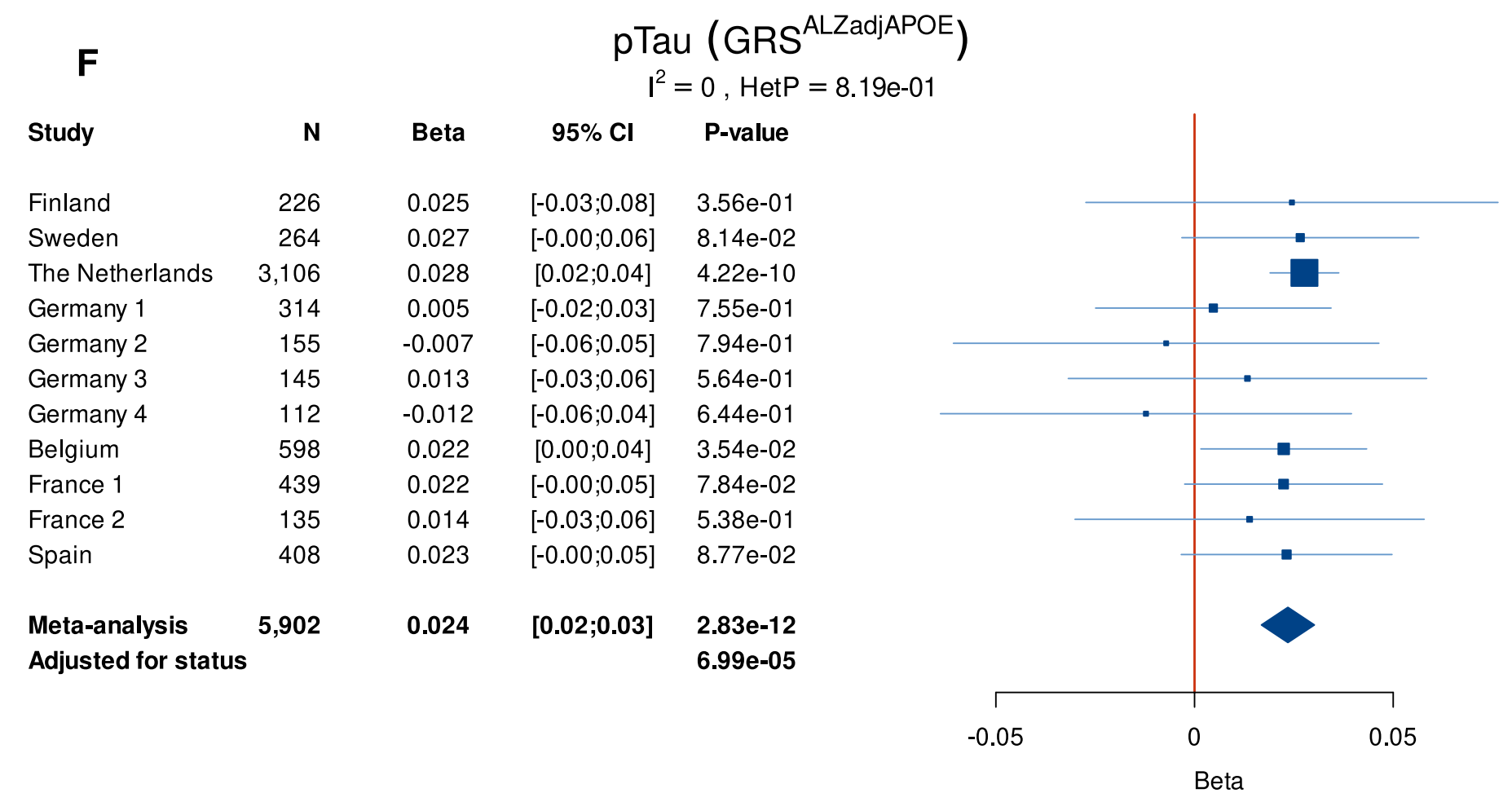
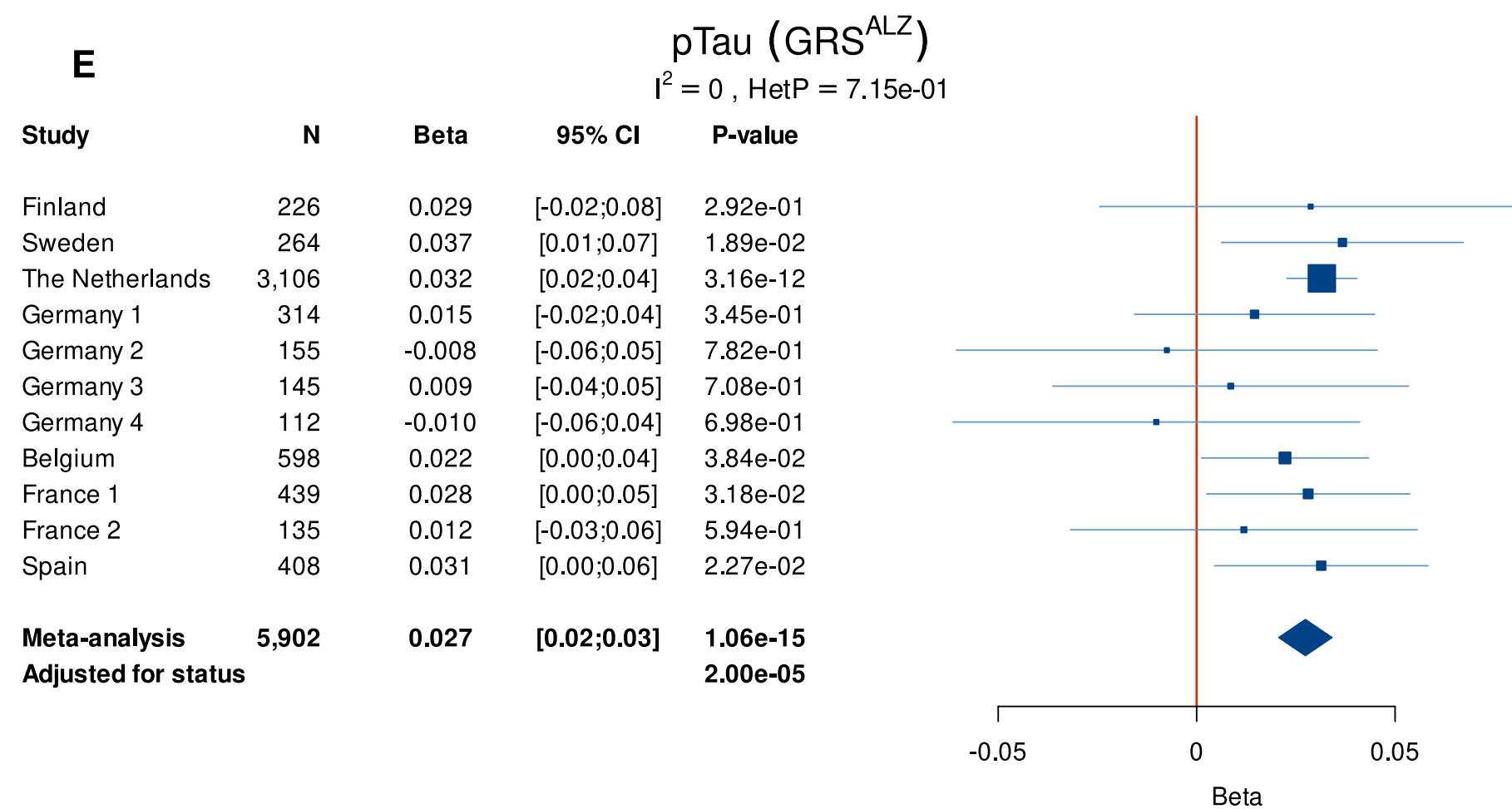
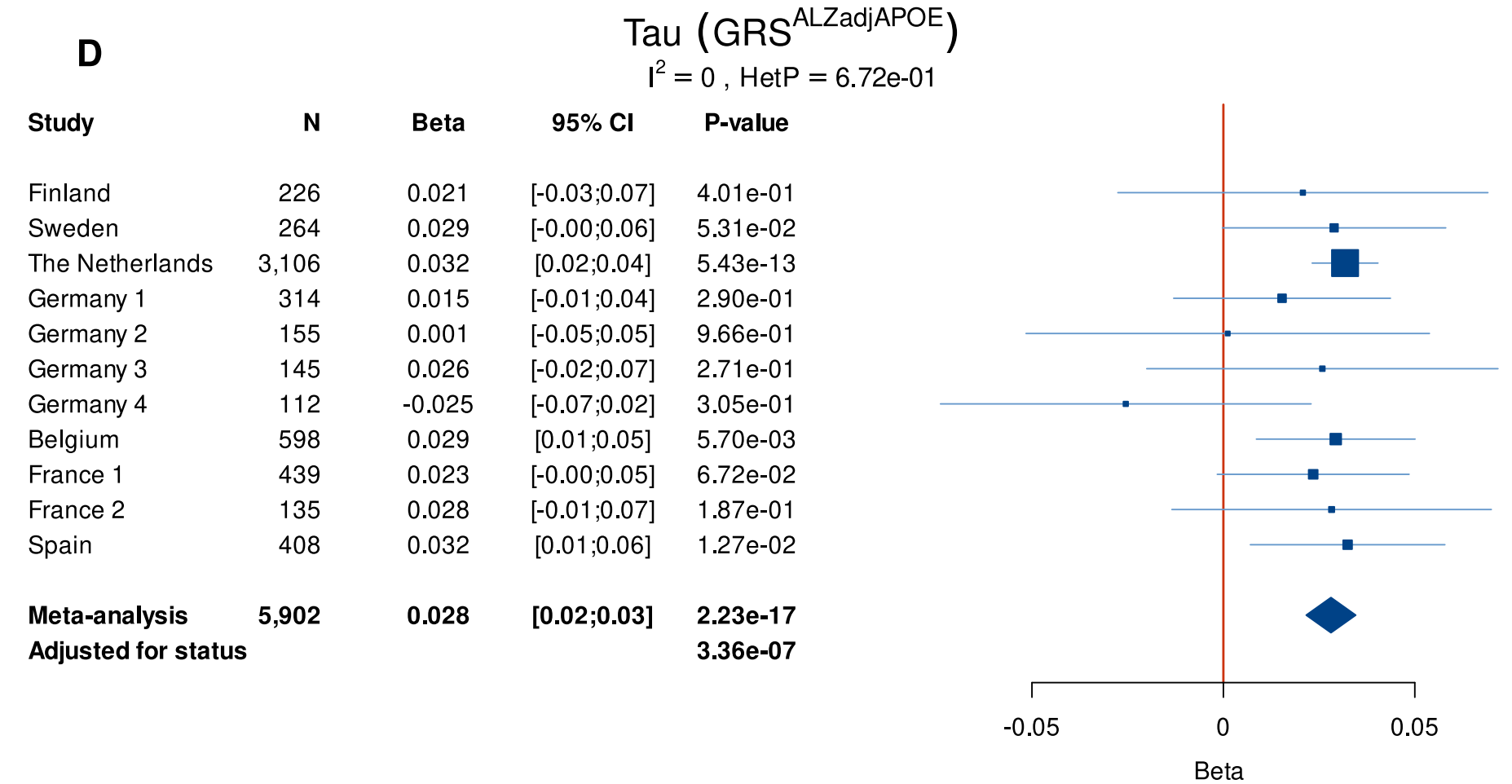
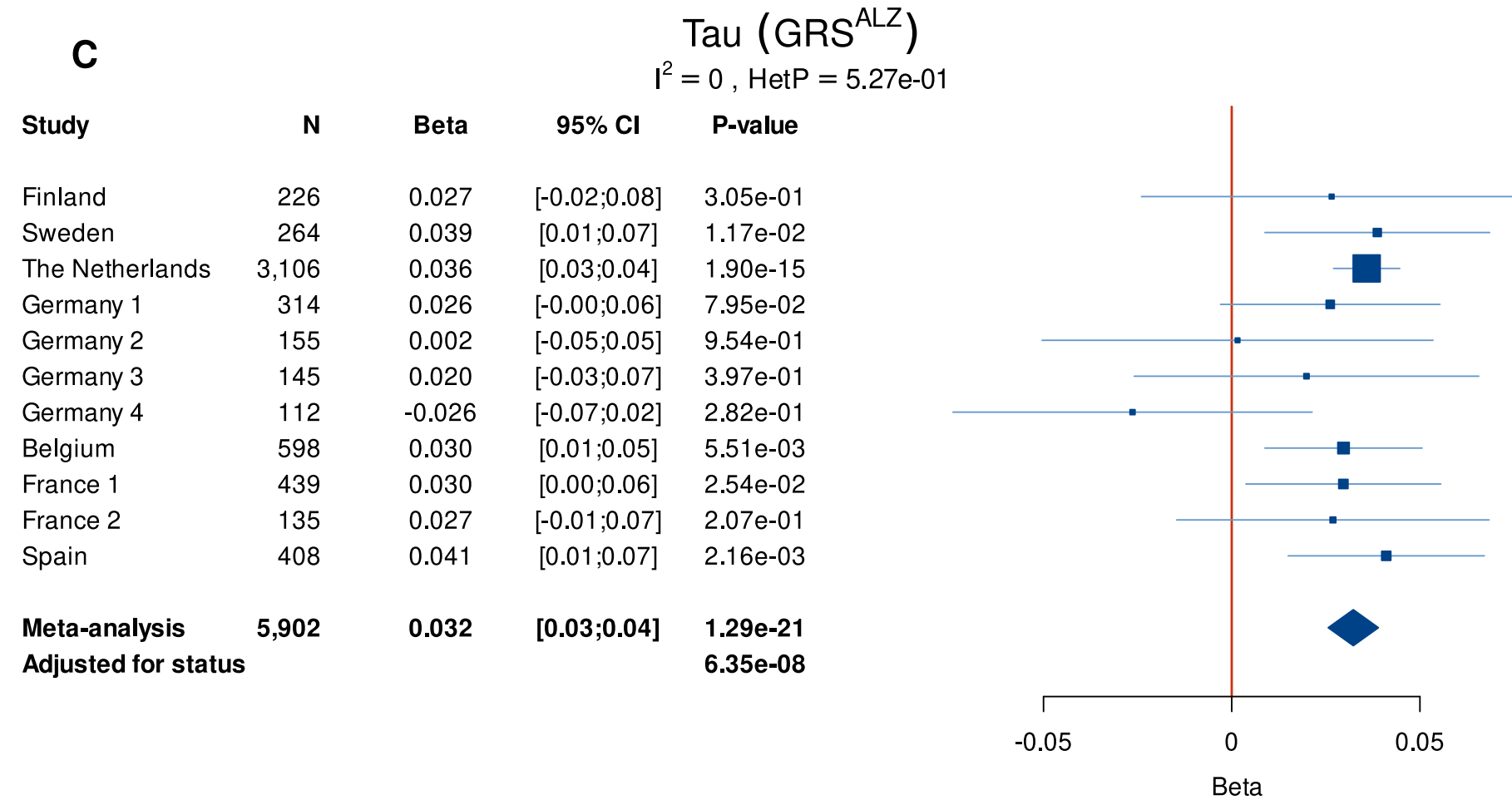


Figure 4

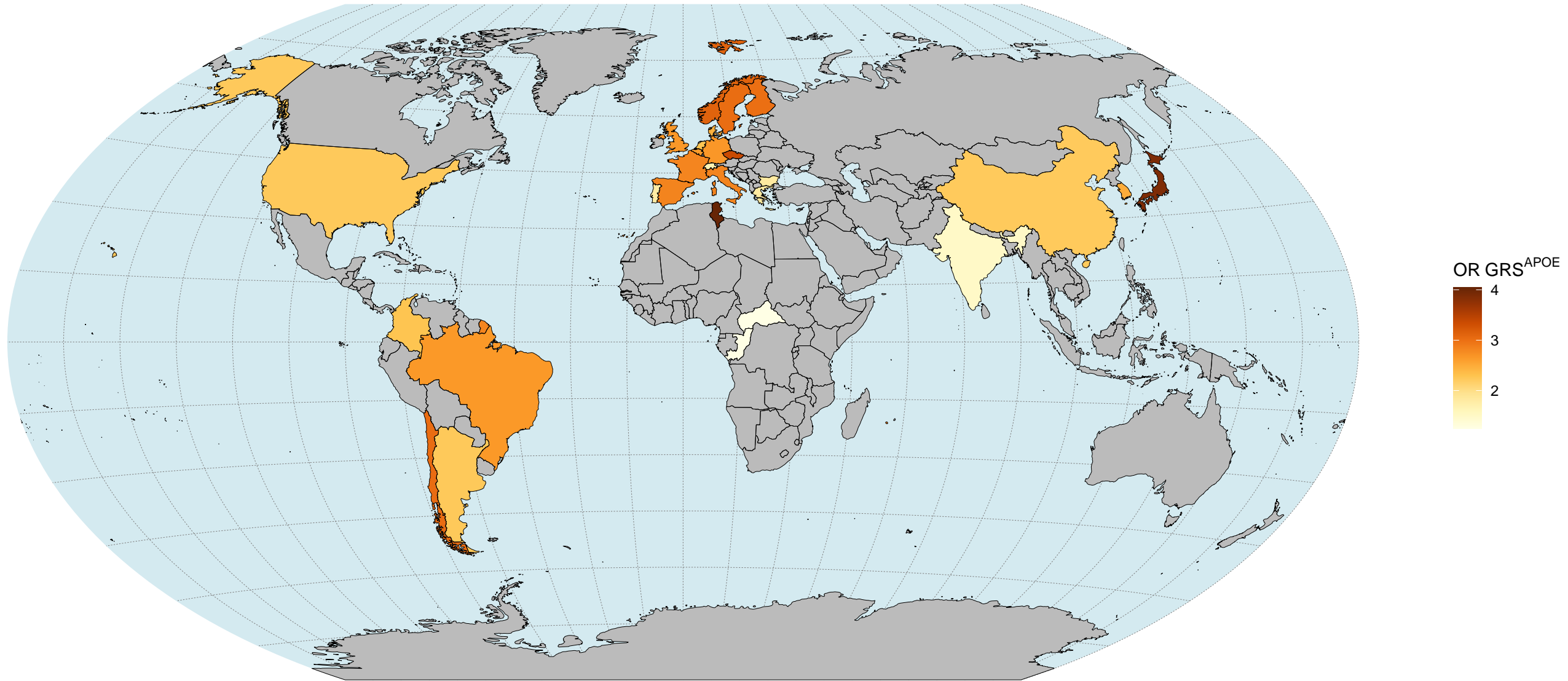
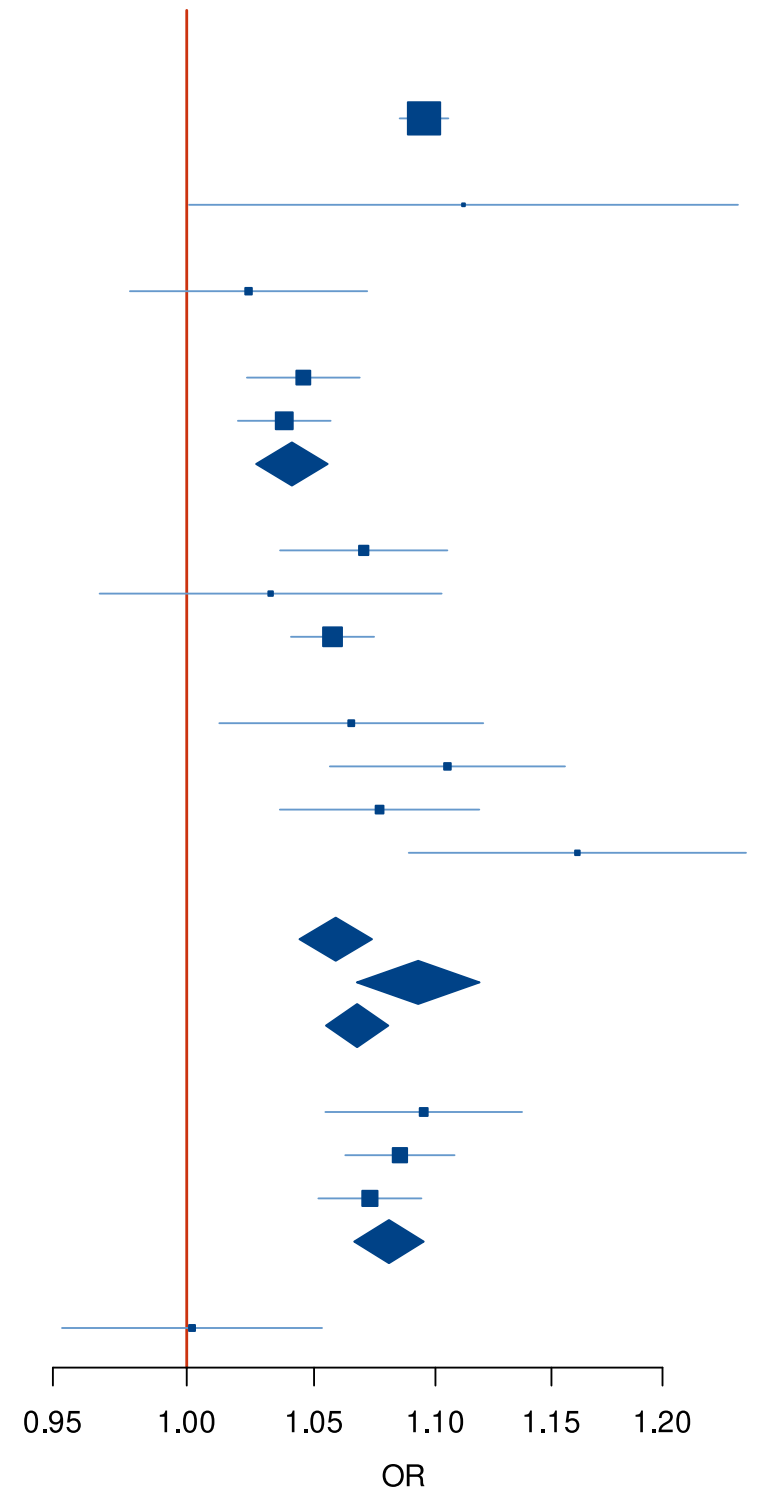


Figure 5
A

GRS^{ALZ}

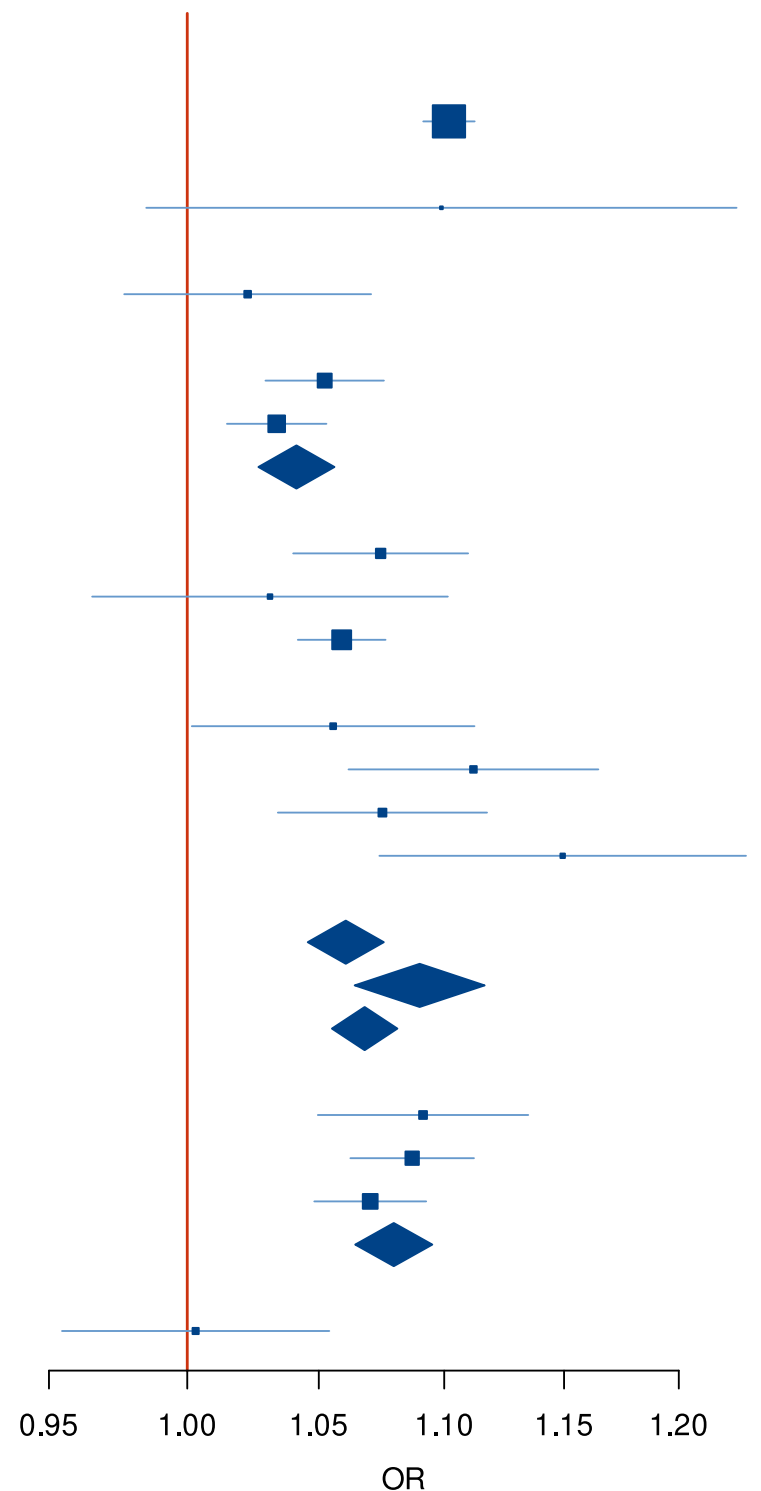
Country	Ncases	Ncontrols	OR	95% CI	P-value
European American MVP	4,561	84,587	1.10	[1.09;1.11]	2.40e-81
Maghreb	58	187	1.11	[1.00;1.24]	4.81e-02
Sub-Saharan Africa	87	1,113	1.02	[0.98;1.07]	3.07e-01
African American MVP	713	19,405	1.05	[1.02;1.07]	5.12e-05
African American ADSP	1,152	2,451	1.04	[1.02;1.06]	3.75e-05
Meta-analysis AA Ancestry	1,865	21,856	1.04	[1.03;1.06]	8.60e-09
US LA Ancestry MVP	375	7,166	1.07	[1.04;1.11]	3.38e-05
US LA Ancestry SALSA	79	657	1.03	[0.97;1.10]	3.36e-01
US LA Ancestry ADSP	1,780	2,489	1.06	[1.04;1.07]	6.26e-12
Colombia	254	241	1.07	[1.01;1.12]	1.45e-02
Brazil	301	176	1.11	[1.06;1.16]	1.39e-05
Argentina	417	601	1.08	[1.04;1.12]	1.51e-04
Chile	122	252	1.16	[1.09;1.24]	5.60e-06
Meta-analysis US LA Ancestry	2,234	10,312	1.06	[1.04;1.07]	1.04e-15
Meta-analysis South America	1,094	1,270	1.09	[1.07;1.12]	1.47e-13
Meta-analysis LA Ancestry	3,328	11,582	1.07	[1.05;1.08]	1.43e-26
China	453	786	1.10	[1.05;1.14]	2.33e-06
Japan	1,756	1,865	1.09	[1.06;1.11]	2.08e-14
South Korea	1,119	1,172	1.07	[1.05;1.09]	3.25e-12
Meta-analysis East Asia	3,328	3,823	1.08	[1.07;1.10]	1.05e-29
India	110	1,548	1.00	[0.95;1.05]	9.37e-01



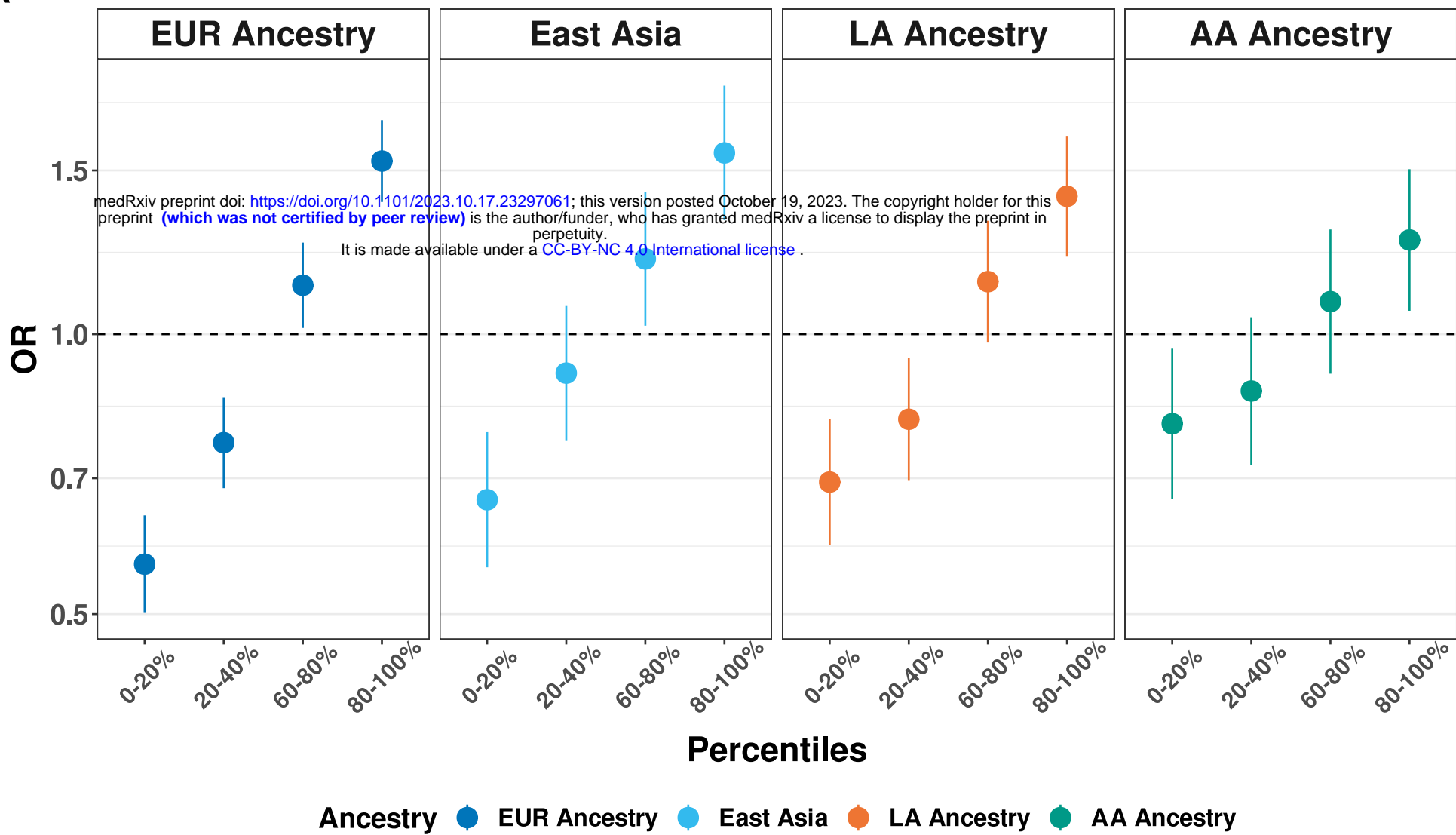
B

GRS^{ALZadjAPOE}

Country	Ncases	Ncontrols	OR	95% CI	P-value
European American MVP	4,561	84,587	1.10	[1.09;1.11]	1.73e-88
Maghreb	58	187	1.10	[0.99;1.23]	9.15e-02
Sub-Saharan Africa	87	1,113	1.02	[0.98;1.07]	3.38e-01
African American MVP	713	19,405	1.05	[1.03;1.08]	5.38e-06
African American ADSP	1,152	2,451	1.03	[1.01;1.05]	4.25e-04
Meta-analysis AA Ancestry	1,865	21,856	1.04	[1.03;1.06]	1.86e-08
US LA Ancestry MVP	375	7,166	1.07	[1.04;1.11]	1.47e-05
US LA Ancestry SALSA	79	657	1.03	[0.97;1.10]	3.62e-01
US LA Ancestry ADSP	1,780	2,489	1.06	[1.04;1.08]	5.14e-12
Colombia	254	241	1.06	[1.00;1.11]	4.31e-02
Brazil	301	176	1.11	[1.06;1.17]	7.09e-06
Argentina	417	601	1.08	[1.03;1.12]	2.54e-04
Chile	122	252	1.15	[1.08;1.23]	5.96e-05
Meta-analysis US LA Ancestry	2,234	10,312	1.06	[1.05;1.08]	4.75e-16
Meta-analysis South America	1,094	1,270	1.09	[1.06;1.12]	2.87e-12
Meta-analysis LA Ancestry	3,328	11,582	1.07	[1.06;1.08]	5.84e-26
China	453	786	1.09	[1.05;1.14]	1.12e-05
Japan	1,756	1,865	1.09	[1.06;1.11]	9.80e-13
South Korea	1,119	1,172	1.07	[1.05;1.09]	1.47e-10
Meta-analysis East Asia	3,328	3,823	1.08	[1.06;1.10]	1.01e-25
India	110	1,548	1.00	[0.95;1.05]	9.02e-01



medRxiv preprint doi: <https://doi.org/10.1101/2023.10.19.23297061>; this version posted October 19, 2023. The copyright holder for this preprint (which was not certified by peer review) is the author/funder, who has granted medRxiv a license to display the preprint in perpetuity. It is made available under a [CC-BY-NC 4.0 International license](https://creativecommons.org/licenses/by-nc/4.0/).

Figure 6GRS^{ALZadjAPOE}**A****B**GRS^{ALZinclAPOE}