

## Supplemental Online Content

**eTable 1.** Baseline characteristics of the children of Catalonia, Spain, included in the study of socioeconomic inequality in COVID-19 infection and vaccination.

**eTable 2.** Baseline characteristics of the adolescents of Catalonia, Spain included in the study of socioeconomic inequality in COVID-19 infection and vaccination.

**eTable 3.** Cumulative incidence of COVID-19 infection and vaccine coverage by cohort, overall and by sex and Socioeconomic Deprivation Index quintile.

**eTable 4.** Crude Hazard Ratios of COVID-19 infection and vaccination 3 months before and after vaccination rollout by Socioeconomic Deprivation Index quintile by SDI quintile relative to Q1, stratified by sex and previous COVID-19 infection.

**eFigure 1.** Log-log survival curves to COVID-19 infection or vaccination by Socioeconomic Deprivation Index quintile, for each study period.

**eFigure 2.** Directed Acyclic Graph modelling the relationship between socioeconomic deprivation and COVID-19 infection among children and adolescents.

**eFigure 3.** Directed Acyclic Graph modelling the relationship between socioeconomic deprivation and COVID-19 vaccine uptake among children and adolescents.

**eFigure 4.** Proportion of individuals who had performed one or more tests by age group and Socioeconomic Deprivation Index quintile, before and after the start of the vaccination rollout.

**eTable 1. Baseline characteristics of the children of Catalonia, Spain, included in the study of socioeconomic inequality in COVID-19 infection and vaccination.**

Characteristics	Pre-vaccination period, Infection	Vaccination period, Infection	Vaccination period, Vaccine uptake
<b>N</b>	290625	276753	274472
<b>Age (median [IQR])</b>	8.0 [6.0, 10.0]	8.0 [6.0, 10.0]	8.0 [6.0, 10.0]
<b>Sex No.(%)</b>			
Female	141020 (48.5)	134520 (48.6)	133468 (48.6)
Male	149605 (51.5)	142233 (51.4)	141004 (51.4)
<b>Nationality No.(%)</b>			
Spain	250644 (86.2)	234209 (84.6)	232036 (84.5)
Africa	12915 (4.4)	13797 (5.0)	13773 (5.0)
Asia & Oceania	9492 (3.3)	9441 (3.4)	9430 (3.4)
Central & South America	8802 (3.0)	10577 (3.8)	10544 (3.8)
Eastern Europe	5487 (1.9)	5251 (1.9)	5225 (1.9)
Europe & North America	3285 (1.1)	3478 (1.3)	3464 (1.3)
<b>SDI quintile No.(%)</b>			
Q1 (least deprived)	53140 (18.3)	50188 (18.1)	49699 (18.1)
Q2	55703 (19.2)	52301 (18.9)	51795 (18.9)
Q3	56850 (19.6)	53707 (19.4)	53234 (19.4)
Q4	60099 (20.7)	57426 (20.7)	56973 (20.8)
Q5 (most deprived)	64833 (22.3)	63131 (22.8)	62771 (22.9)
<b>Previous COVID-19 Infection No.(%)</b>	1814 (0.6)	47300 (17.1)	46640 (17.0)

\*Values are no. (%) except as indicated. Pre-vaccination period (Sep 26 - Dec 26 2020), Vaccination period, children (15 Dec 2021 - 15 Mar 2022). Quintiles listed from least deprived (Q1) to most deprived (Q5). IQR, interquartile range; SDI, Socioeconomic Deprivation Index; COVID-19; Coronavirus Disease 2019.

**eTable 2. Baseline characteristics of the adolescents of Catalonia, Spain included in the study of socioeconomic inequality in COVID-19 infection and vaccination.**

Characteristics	Pre-vaccination period, Infection	Vaccination period, Infection	Vaccination period, Vaccine uptake
<b>N</b>	179685	175249	174807
<b>Age (median [IQR])</b>	13.0 [12.0, 14.0]	13.0 [12.0, 14.0]	13.0 [12.0, 14.0]
<b>Sex No.(%)</b>			
Female	87243 (48.6)	84727 (48.3)	84516 (48.3)
Male	92442 (51.4)	90522 (51.7)	90291 (51.7)
<b>Nationality No.(%)</b>			
Spain	159824 (88.9)	153932 (87.8)	153552 (87.8)
Africa	5247 (2.9)	5641 (3.2)	5623 (3.2)
Asia & Oceania	5065 (2.8)	5329 (3.0)	5316 (3.0)
Central & South America	4908 (2.7)	5508 (3.1)	5490 (3.1)
Eastern Europe	3030 (1.7)	3182 (1.8)	3174 (1.8)
Europe & North America	1611 (0.9)	1657 (0.9)	1652 (0.9)
<b>SDI quintile No.(%)</b>			
Q1 (least deprived)	34524 (19.2)	32518 (18.6)	32440 (18.6)
Q2	35637 (19.8)	34477 (19.7)	34397 (19.7)
Q3	35686 (19.9)	34788 (19.9)	34700 (19.9)
Q4	35994 (20.0)	35595 (20.3)	35495 (20.3)
Q5 (most deprived)	37844 (21.1)	37871 (21.6)	37775 (21.6)
<b>Previous COVID-19 Infection No.(%)</b>	1039 (0.6)	30323 (17.3)	29958 (17.1)

\*Values are no. (%) except as indicated. Pre-vaccination period (Sep 26 - Dec 26 2020), Vaccination period, adolescents (Aug 1 - Oct 1 2021). Quintiles listed from least deprived (Q1) to most deprived (Q5). IQR, interquartile range; SDI, Socioeconomic Deprivation Index; COVID-19; Coronavirus Disease 2019.

**eTable 3. Cumulative incidence of COVID-19 infection and vaccine coverage by cohort, overall and by sex and Socioeconomic Deprivation Index quintile.**

	Overall	Q1	Q2	Q3	Q4	Q5
<b>Pre-vaccination rollout, Children</b>						
Infection No.(%)						
<i>Overall</i>	16773 (5.8)	2441 (4.6)	2862 (5.1)	3058 (5.4)	3867 (6.4)	4545 (7.0)
<i>Female</i>	8122 (5.8)	1174 (4.6)	1366 (5.1)	1488 (5.4)	1912 (6.6)	2182 (6.9)
<i>Male</i>	8651 (5.8)	1267 (4.6)	1496 (5.2)	1570 (5.4)	1955 (6.3)	2363 (7.1)
<b>Pre-vaccination rollout, Adolescents</b>						
Infection No.(%)						
<i>Overall</i>	15430 (8.6)	2597 (7.5)	2908 (8.2)	3039 (8.5)	3078 (8.6)	3808 (10.1)
<i>Female</i>	7542 (8.6)	1261 (7.5)	1406 (8.1)	1464 (8.4)	1529 (8.8)	1882 (10.3)
<i>Male</i>	7888 (8.5)	1336 (7.6)	1502 (8.2)	1575 (8.6)	1549 (8.4)	1926 (9.8)
<b>Vaccination rollout, Children</b>						
Infection No.(%)						
<i>Overall</i>	92958 (33.6)	19729 (39.3)	19501 (37.3)	18656 (34.7)	18334 (31.9)	16738 (26.5)
<i>Female</i>	44677 (33.2)	9436 (38.7)	9414 (37.2)	9079 (34.7)	8697 (31.2)	8051 (26.1)
<i>Male</i>	48281 (33.9)	10293 (39.9)	10087 (37.3)	9577 (34.8)	9637 (32.6)	8687 (26.9)
Vaccination No.(%)						
<i>Overall</i>	123018 (44.8)	24970 (50.2)	25117 (48.5)	24743 (46.5)	25465 (44.7)	22723 (36.2)
<i>Female</i>	59975 (44.9)	12141 (50.2)	12173 (48.6)	11998 (46.2)	12484 (45.1)	11179 (36.5)
<i>Male</i>	63043 (44.7)	12829 (50.2)	12944 (48.4)	12745 (46.7)	12981 (44.3)	11544 (35.9)
<b>Vaccination rollout, Adolescents</b>						
Infection No.(%)						
<i>Overall</i>	2815 (1.6)	408 (1.3)	502 (1.5)	527 (1.5)	598 (1.7)	780 (2.1)
<i>Female</i>	1466 (1.7)	208 (1.3)	266 (1.6)	284 (1.7)	293 (1.7)	415 (2.3)
<i>Male</i>	1349 (1.5)	200 (1.2)	236 (1.3)	243 (1.4)	305 (1.7)	365 (1.9)
Vaccination No.(%)						
<i>Overall</i>	126995 (72.6)	24216 (74.6)	25853 (75.2)	25716 (74.1)	25924 (73.0)	25286 (66.9)
<i>Female</i>	61712 (73.0)	11662 (74.3)	12540 (75.5)	12533 (74.2)	12724 (74.1)	12253 (67.5)

*Male*      65283 (72.3)   12554 (75.0)   13313 (74.9)   13183 (74.0)   13200 (72.0)   13033 (66.4)

---

Pre-vaccination period (Sep 26 - Dec 26 2020), Vaccination period, adolescents (Aug 1 - Oct 1 2021), Vaccination period, children (15 Dec 2021 - 15 Mar 2022). Quintiles listed from least deprived (Q1) to most deprived (Q5). IQR, interquartile range; SDI, Socioeconomic Deprivation Index.

**eTable 4. Crude Hazard Ratios of COVID-19 infection and vaccination 3 months before and after vaccination rollout by Socioeconomic Deprivation Index quintile by SDI quintile relative to Q1, stratified by sex and previous COVID-19 infection.**

<b>Infection, Pre-vaccination period, Children</b>				
	HR (95% CI)	HR Female (95% CI)	HR Male (95% CI)	HR Without Previous COVID-19 (95% CI)
Q1 ( <i>ref.</i> )	1 [Reference]	1 [Reference]	1 [Reference]	1 [Reference]
Q2	1.12 (1.06 - 1.18)	1.12 (1.04 - 1.21)	1.12 (1.04 - 1.21)	1.12 (1.06 - 1.18)
Q3	1.18 (1.12 - 1.24)	1.18 (1.10 - 1.28)	1.17 (1.09 - 1.26)	1.17 (1.11 - 1.24)
Q4	1.42 (1.35 - 1.49)	1.46 (1.35 - 1.57)	1.38 (1.28 - 1.48)	1.41 (1.34 - 1.49)
Q5	1.55 (1.47 - 1.63)	1.54 (1.43 - 1.65)	1.56 (1.46 - 1.67)	1.55 (1.47 - 1.63)
<b>Infection, Pre-vaccination period, Adolescents</b>				
	HR (95% CI)	HR Female (95% CI)	HR Male (95% CI)	HR Without Previous COVID-19 (95% CI)
Q1 ( <i>ref.</i> )	1 [Reference]	1 [Reference]	1 [Reference]	1 [Reference]
Q2	1.09 (1.03 - 1.15)	1.08 (1.01 - 1.17)	1.09 (1.01 - 1.17)	1.09 (1.03 - 1.15)
Q3	1.14 (1.08 - 1.20)	1.13 (1.05 - 1.22)	1.15 (1.07 - 1.23)	1.13 (1.08 - 1.20)
Q4	1.14 (1.08 - 1.20)	1.18 (1.09 - 1.27)	1.11 (1.03 - 1.20)	1.14 (1.08 - 1.20)
Q5	1.36 (1.29 - 1.43)	1.40 (1.31 - 1.51)	1.32 (1.23 - 1.41)	1.36 (1.29 - 1.43)
<b>Infection, Vaccination period, Children</b>				
	HR (95% CI)	HR Female (95% CI)	HR Male (95% CI)	HR Without Previous COVID-19 (95% CI)
Q1 ( <i>ref.</i> )	1 [Reference]	1 [Reference]	1 [Reference]	1 [Reference]
Q2	0.94 (0.92 - 0.95)	0.96 (0.93 - 0.98)	0.92 (0.89 - 0.94)	0.94 (0.92 - 0.96)
Q3	0.86 (0.84 - 0.88)	0.88 (0.85 - 0.90)	0.84 (0.82 - 0.87)	0.86 (0.84 - 0.87)
Q4	0.78 (0.76 - 0.79)	0.77 (0.75 - 0.79)	0.78 (0.76 - 0.80)	0.78 (0.76 - 0.79)
Q5	0.62 (0.61 - 0.64)	0.63 (0.61 - 0.65)	0.62 (0.60 - 0.64)	0.62 (0.61 - 0.64)
<b>Infection, Vaccination period, Adolescents</b>				
	HR (95% CI)	HR Female (95% CI)	HR Male (95% CI)	HR Without Previous COVID-19 (95% CI)
Q1 ( <i>ref.</i> )	1 [Reference]	1 [Reference]	1 [Reference]	1 [Reference]
Q2	1.16 (1.02 - 1.32)	1.21 (1.01 - 1.45)	1.11 (0.92 - 1.34)	1.13 (0.98 - 1.30)
Q3	1.21 (1.06 - 1.38)	1.27 (1.06 - 1.52)	1.14 (0.95 - 1.38)	1.19 (1.03 - 1.36)
Q4	1.34 (1.18 - 1.52)	1.29 (1.08 - 1.54)	1.40 (1.17 - 1.67)	1.35 (1.18 - 1.55)
Q5	1.65 (1.46 - 1.86)	1.73 (1.47 - 2.05)	1.56 (1.31 - 1.86)	1.60 (1.41 - 1.82)
<b>Vaccination, Vaccination period, Children</b>				
	HR (95% CI)	HR Female (95% CI)	HR Male (95% CI)	HR Without Previous COVID-19 (95% CI)
Q1 ( <i>ref.</i> )	1 [Reference]	1 [Reference]	1 [Reference]	1 [Reference]

Q2	0.92 (0.91 - 0.94)	0.93 (0.90 - 0.95)	0.92 (0.90 - 0.94)	0.92 (0.91 - 0.94)
Q3	0.85 (0.84 - 0.87)	0.85 (0.83 - 0.87)	0.86 (0.83 - 0.88)	0.85 (0.84 - 0.87)
Q4	0.79 (0.78-0.81)	0.80 (0.78 - 0.82)	0.78 (0.76 - 0.80)	0.79 (0.78-0.81)
Q5	0.58 (0.57 - 0.59)	0.59 (0.57 - 0.60)	0.58 (0.56 - 0.59)	0.57 (0.56 - 0.58)

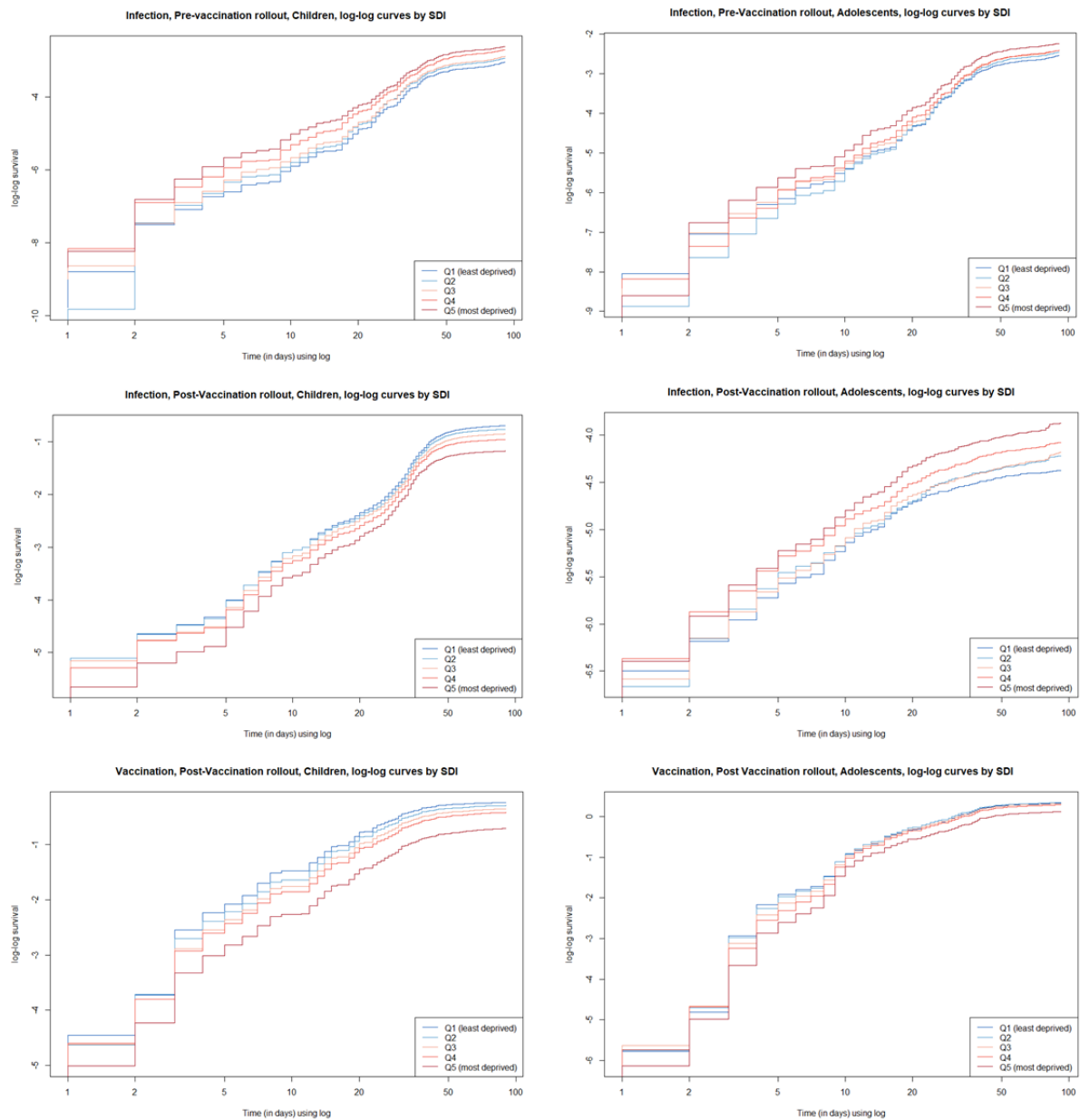
---

**Vaccination, Vaccination period, Adolescents**

	HR (95% CI)	HR Female (95% CI)	HR Male (95% CI)	HR Without Previous COVID-19 (95% CI)
Q1 ( <i>ref.</i> )	1 [Reference]	1 [Reference]	1 [Reference]	1 [Reference]
Q2	1.02 (1.00 - 1.04)	1.03 (1.01 - 1.06)	1.01 (0.99 - 1.03)	1.02 (1.00 - 1.04)
Q3	0.98 (0.97 - 1.00)	0.99 (0.97 - 1.02)	0.98 (0.95 - 1.00)	0.98 (0.96 - 1.00)
Q4	0.94 (0.93 - 0.96)	0.98 (0.95 - 1.00)	0.91 (0.89 - 0.94)	0.94 (0.92 - 0.96)
Q5	0.79 (0.77 - 0.80)	0.81 (0.79 - 0.83)	0.77 (0.75 - 0.79)	0.77 (0.76 - 0.79)

Quintiles listed from least deprived (Q1) to most deprived (Q5). SDI, Socioeconomic Deprivation Index; COVID-19; Coronavirus Disease 2019. Pre-vaccination period (Sep 26 - Dec 26 2020), Vaccination period, adolescents (Aug 1 - Oct 1 2021), Vaccination period, children (15 Dec 2021 - 15 Mar 2022).

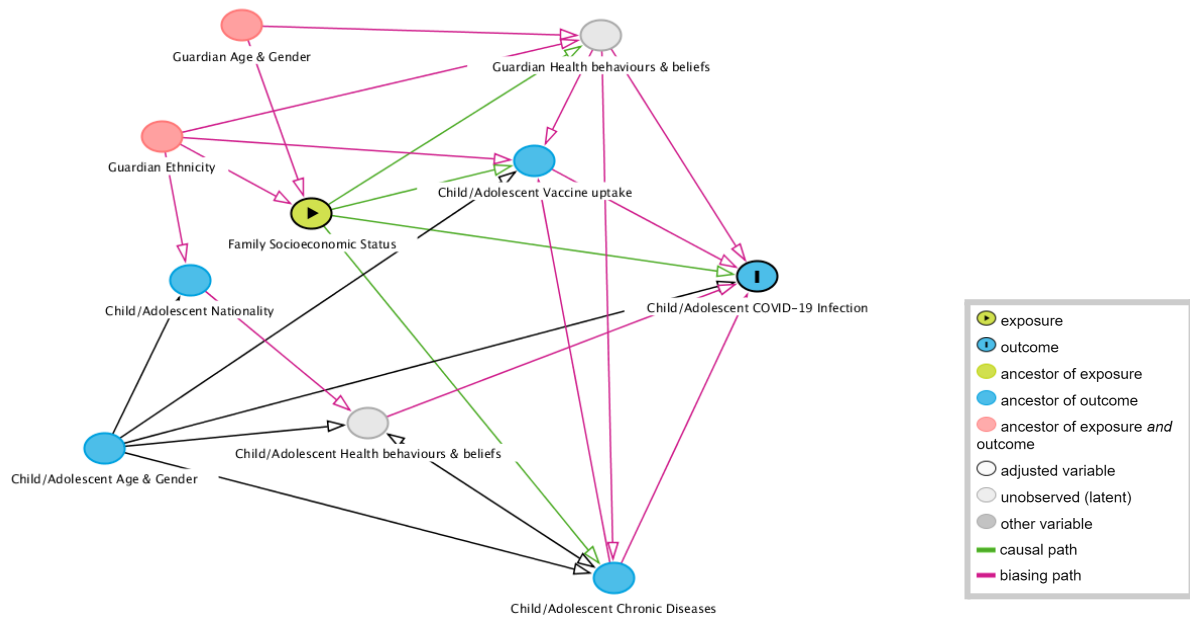
**eFigure 1. Log-log survival curves to COVID-19 infection or vaccination by Socioeconomic Deprivation Index quintile, for each study period.**



Pre-vaccination period (Sep 26 - Dec 26 2020), Vaccination period, adolescents (Aug 1 - Oct 1 2021), Vaccination period, children (15 Dec 2021 - 15 Mar 2022). Quintiles listed from least deprived (Q1) to most deprived (Q5). IQR, interquartile range; SDI, Socioeconomic Deprivation Index

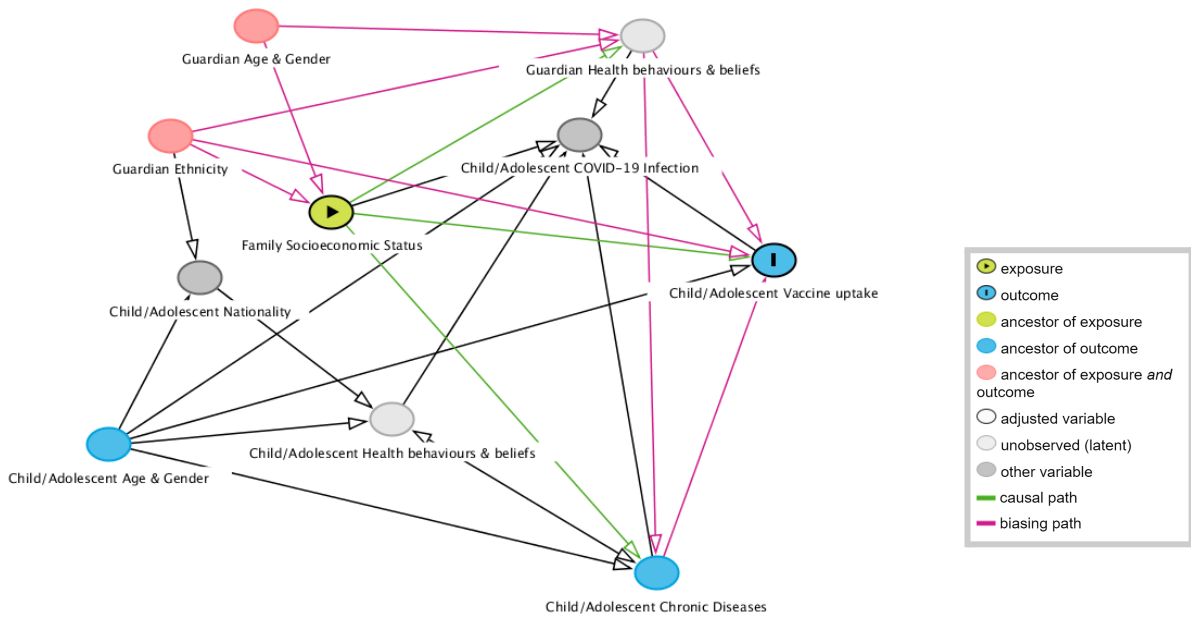


**eFigure 2. Directed Acyclic Graph modelling the relationship between socioeconomic deprivation and COVID-19 infection among children and adolescents.**



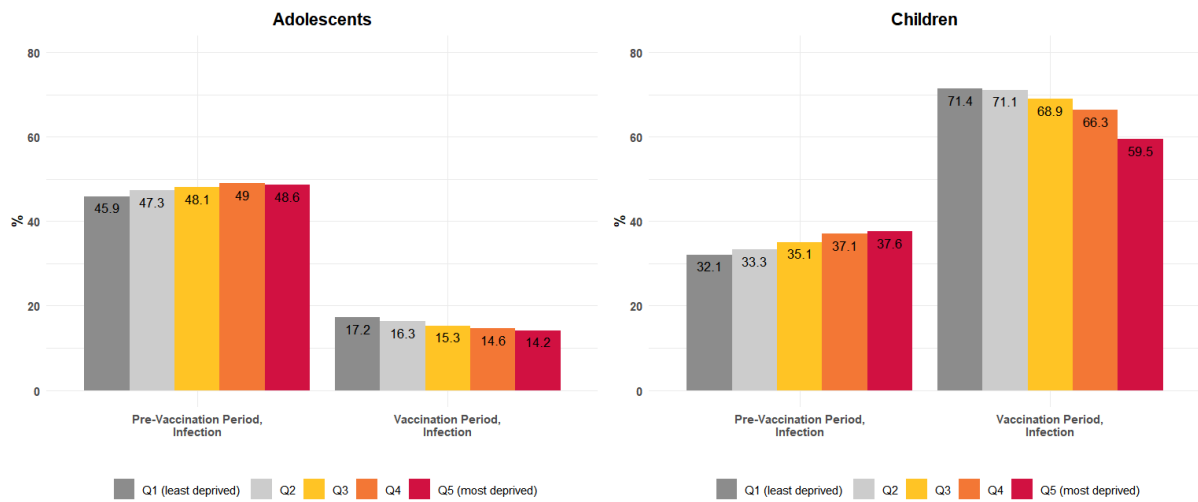
COVID-19; Coronavirus Disease 2019

**eFigure 3. Directed Acyclic Graph modelling the relationship between socioeconomic deprivation and COVID-19 vaccine uptake among children and adolescents.**



COVID-19; Coronavirus Disease 2019

**eFigure 4. Proportion of individuals who had performed one or more tests by age group and Socioeconomic Deprivation Index quintile, before and after the start of the vaccination rollout.**



Quintiles listed from least deprived (Q1) to most deprived (Q5). SDI, Socioeconomic Deprivation Index. Pre-vaccination period (Sep 26 - Dec 26 2020), Vaccination period, adolescents (Aug 1 - Oct 1 2021), Vaccination period, children (15 Dec 2021 - 15 Mar 2022).